



THE LONDON SCHOOL
OF ECONOMICS AND
POLITICAL SCIENCE ■



Impact

Issue 20, Summer 2019

Celebrating volunteering and philanthropy at LSE

LSE 2030: Priorities and benefits

Reducing and preventing homelessness –
LSE's programme to improve people's lives

LSE Alumni Centre opens –
a home on campus for our global network



Contents

4 LSE 2030 strategy and partnerships

Research for the world

6 Reducing and preventing homelessness

Housing Plus Academy boosted by The Mitchell Trust

7 Successful health policy impact

Impact of IGC partnership with The Rockefeller Foundation in Sierra Leone

8 Tackling violence against women

Centre for Women, Peace and Security's digital resource development made possible by Joseph Rowntree Charitable Trust grant

8 Obstetric care access

AXA Research Fund fellowship supports strategic policy in Nigeria

Educate for impact

9 Philanthropy and scholarships

The tremendous impact of support for students

10 Legacy commitments

Sharing the benefit of an LSE education

19 Student projects launched

Regular giving support for Students' Union fund

20 Enhanced prospects

Undergraduates and faculty benefit from alumni gift funded research assistant programme

LSE for everyone

12 Engaging alumni to shape the future

Alumni and friends are an integral part of LSE 2030

13 Global alumni news

Staying connected, building networks and maintaining links with LSE

14 Alumni Centre opens

A campus hub for our global network of alumni and friends

Convening in London

16 Marshall Building

Highlighting the sports and arts facilities that will be offered alongside outstanding academic, teaching and research spaces

18 £1m awarded by Wolfson Foundation to the Centre Building

Helping to enhance the LSE education experience





Dear Friends

I am delighted to share with you the 2019 issue of *Impact*.

This year has been one of great progress at the School. We launched LSE 2030, our strategy which sets out the guiding principles and commitments that will help us shape the world's future, and achieve our ambition of being the leading social science institution with the greatest global impact.

Your contributions to the strategy process have been greatly appreciated. On pages 4-5 we share the framework for the future that we believe will offer alumni, friends and partners a range of ways to benefit from your lifelong connection to LSE – and opportunities to contribute to the priority areas that will help us to realise success.

You have already helped to ensure we embark on the road towards 2030 from a position of significant strength. As ever, *Impact* celebrates the wonderful work taking place across the School community and recognises the generous ways in which alumni volunteers, philanthropic supporters and strategic partners help to make LSE stronger in our commitment to the world around us.

We hear about the Housing Plus Academy's efforts to tackle homelessness (page 6) and the role the LSE International Growth Centre played in building a resilient health system in post-Ebola Sierra Leone (page 7). On pages 10-11 Betty and David Icharia share their life journey – from their native Kenya to the UK and Canada – and reflect on their decision to leave a legacy to the School.

In May, our alumni volunteer leadership returned to campus for the Alumni Association Executive Committee's annual meeting – to learn more about LSE 2030, plan for the future with Philanthropy and Global Engagement staff, develop new partnerships with School colleagues and build on their progress over the past year. On page 12, Tom Kern (vice-chair) shares his update and looks forward with excitement to the September Forum for the global volunteer network.

A great deal of work undertaken this year has been made possible by gifts and contributions in 2017/18. The LSE Supporter Roll, which starts on page 23, outlines voluntary support and philanthropic gifts made in 2017/18 and serves as recognition of our immense gratitude to all these supporters.

In 2020 we will begin our 125th anniversary celebrations. We will welcome you to share in our activities – both on campus and around the world – as we reflect with pride on our School's enduring mission for the betterment of society, whilst sharing our bold plans for the future to advance our founding mission. As a proud LSE alumna, I am incredibly honoured to have the responsibility of leading the School and helping to build on that wonderful legacy to shape LSE's future.

Thank you – in retrospect and in advance – for everything you do in support of the School as we seek to use our unique strengths to actively contribute to positive change in the world. We are where we are today, thanks to your support and that of many others since our founding. Long may it continue.

With warmest wishes,

Minouche Shafik
LSE Director





Alumni, friends and partners at the heart of **LSE 2030**

Our strategy was informed by and created following a consultation process which benefited greatly from your contributions and insight. LSE 2030 lays out the guiding principles and commitments that will help us shape the world's future, and achieve our ambition of being the leading social science institution with the greatest global impact.

Ben Plummer-Powell, who is LSE's Chief Philanthropy & Global Engagement Officer and a member of the School Management Committee, introduces LSE 2030 and outlines why alumni, friends and partners are at the core of this strategy and LSE's future.

LSE 2030 is an exciting moment for the School – and one which we hope will excite our alumni, friends and partners in numerous ways. As we prepare to mark 125 years of LSE changing the world for the better through education and research, the strategy draws from our rich legacy of influence. Through the significant work of our alumni, friends and partners contributing to this legacy, we continue to understand and shape tomorrow.

Our vision is clear, but we are all in the midst of huge challenges – economic uncertainty, political divisions, social transformations and a tide of anti-intellectual sentiment having an impact on higher education, to name but a few. This is why our founding mission, our teaching and research, and the influence of our alumni, friends and partners is more important than ever before.

In this context, our guiding principles to **sustain excellence through an inclusive and diverse community, extend our impact and reach** and **ensure a sustainable future** for the social sciences help to inform three enduring priorities. These are referenced below and taken directly from LSE 2030:

Priority 1: Educate for impact

We will work in partnership with our students and alumni to find innovative ways of learning, creating and collaborating, equipping them with the insights and skills they need to better understand and shape our rapidly changing world. We will support our students to become independent thinkers, critical investigators and the thought leaders of tomorrow, supporting them to innovate and create real change. Our alumni, friends and partners will be invited to

continue learning and to stay engaged with LSE's intellectual capital, on campus, online and through our global networks.

Priority 2: Research for the world

LSE is international, interdisciplinary and issue-oriented. We will build on these reputational strengths and take the lead in securing and defining the future of social sciences across the globe.

As we strengthen our position as the home of social sciences, now and in the future, we must demonstrate the value of social sciences, and work to ensure they are properly recognised, evaluated and funded. We will build new relationships to increase our contribution to the betterment of society, politically, economically and socially – and establish LSE as the global convener of influential debates on critical issues.

Priority 3: Develop LSE for everyone

LSE thrives on diversity – of people, ideas and interests. We will invest so that we continue to attract the best and brightest students and faculty, and enable every member of our community to excel. We will facilitate lifelong relationships with LSE alumni, friends and partners, and encourage your active involvement with the School.

In parallel we will continue to transform the LSE campus for our community, with state-of-the-art teaching, learning and social spaces. We'll also enhance our digital infrastructure, including provision for online participation and remote learning wherever you are in the world.





How does this benefit our alumni, friends and partners?

You are integral to the future mapped out in LSE 2030. We want you to benefit from, and hope you will contribute to, its success.

For our global alumni network of 150,000, we will ensure that graduation is just the beginning of your relationship with the School, and that all alumni, friends and partners within the extended LSE community can connect with the intellectual capital of LSE at every stage of life. This includes:

- A dedicated Alumni Centre in the new Centre Building, providing a physical hub on campus for alumni from which all our engagement programmes are coordinated.
- Future plans for an online portal to facilitate alumni connectivity and involvement.
- Sustained involvement with the School's intellectual and social community through enhanced events programming, at LSE and globally, and tailored communications activity.
- Expanded education opportunities through short courses, summer schools and executive education programmes with a focus on supporting alumni and world leaders to refresh and reskill throughout evolving careers.



A reciprocal relationship: we need you

We hope that you can also help us to achieve LSE 2030, through the lives you lead as ambassadors for, and through the profound contributions you make to, the School. This helps manifest itself in multiple, critical ways: through volunteer leadership, advice, counsel and support and through the global networks you coordinate on behalf of and open up to LSE students, alumni and staff; through your support of our students – offering mentoring, providing placements and

recruitment opportunities; and through your generous philanthropic support and partnership that provides the scholarships and bursaries, significant campus enhancements and critical funding that helps to power our world-leading faculty and their research that can change the world for good.

We remain grateful to you for your continuing commitments of time, expertise and support, and look forward to working with you to deliver LSE 2030 for the School community's and society's mutual benefit.

Strategic importance of the **alumni volunteer network** for delivering LSE 2030

LSE Council and Court, the Alumni Association Executive Committee, Group Leaders and global alumni volunteers offer invaluable guidance, support and advocacy. We will utilise this to:

- Continue to build the strength of LSE and mobilise global networks.
- Convene the world in and from London and by hosting events around the world to enable influential debates about key global issues, building upon the intellectual capital of the School and LSE leaders worldwide.
- Seek your advocacy of key research themes, including social cohesion, health and wellbeing, technology and innovation, and environment and sustainability.
- Support students and recent graduates and their continuing LSE experience through mentoring, special interest groups, internships, careers guidance and entrepreneurship projects.
- Seek your advice and oversight through serving on boards and committees.

Strategic importance of our **philanthropic leaders** in delivering LSE 2030

By building on your substantial legacy of generosity, we can:

- Provide more scholarships and bursaries to support the brilliant minds from global communities and a wide range of social backgrounds who can lead and sustain the social sciences.
- Attract and recruit the world-leading faculty who will educate and inspire the next generation of civil society leaders – and produce research that transforms the world.
- Invest in the research funds that offer our faculty the flexibility to push at the boundaries of knowledge.
- Create for today and tomorrow a campus that promotes a vibrant learning and research environment, characterised by exceptional facilities as we seek to educate, share knowledge and convene the world in London, embracing new technology and new ways of learning and discovery.



Reducing and preventing homelessness with support from The Mitchell Charitable Trust

LSE Housing and Communities receives £75,000 boost to tackle social challenge

Housing people in need of a home, at a rent they can afford, and in conditions that will help them, their families and their communities to flourish – the Housing Plus Academy's goals in London have recently been given a £75,000 boost by The Mitchell Charitable Trust.

Located within LSE's Centre for Analysis of Social Exclusion, the Housing Plus Academy is a knowledge exchange and research partnership with LSE Housing and Communities.

It works closely with small landlords, community-led and community-based housing organisations, and local authorities on homelessness prevention and reduction.

The partnership with the Trust will enable six interconnected aspects of the Academy to be developed over the next three years. These comprise: research activities focusing on the issues around rough sleeping; temporary housing; private renting and the potential for secure tenancies; smaller social landlords; community-led housing; and learning from the Grenfell disaster.

"We are pleased that our gift to LSE's Housing and Communities project will be used to confront one of the most concerning social challenges facing London today," said Trust spokesperson Antonia Mitchell.

Anne Power CBE, Professor of Social Policy and Head of LSE Housing and Communities, said, "Many charitable and non-profit



Discussions at a Housing Plus Academy event

housing models arose over a long history. Hundreds of years of housing history gives us an intense mixture of landlords, tenures, property types, styles and so on. This makes housing management complex, challenging and yet vital."

The financial crisis of 2008 and the long recession that followed forced many working in the housing world to re-visit the wider role of social landlords. "Housing does not work only through bricks and mortar and

numbers," she added. "Severe funding cut-backs are affecting services and community conditions. Housing Plus is a long-term, relatively low-cost approach that has stood the test of time."

"The support for our work from The Mitchell Charitable Trust has given us a tremendous boost, allowing us to tackle some of the most intractable housing problems in order to help people work together in difficult times."





Successful health policy impact for LSE's International Growth Centre, supported by The Rockefeller Foundation

Partnership with Sierra Leone government boosts post-Ebola efforts to build a resilient national health system

The Ebola outbreak in Sierra Leone five years ago exposed fatal weaknesses in its health system. The country urgently required an improved, nationally integrated Community Health Worker (CHW) programme to deliver enhanced primary health services, as well as a strategic plan incorporating lessons learned since the programme's inception and during the Ebola outbreak.

Through a \$900,000 grant from The Rockefeller Foundation in 2015, LSE's International Growth Centre (IGC) took a sustained role contributing to the revision and roll out of Sierra Leone's CHW policy.

This IGC programme supported building a resilient health system in Sierra Leone by working with the Ministry of Health and Sanitation (MoHS) to develop an evidence-based process for reorganising the existing system. It drew on lessons learned during the Ebola crisis, global evidence on resilient health systems, and original research on improving the effectiveness of CHWs facilitated through the programme.

It also aimed to ensure institutional processes were in place to allow the health system itself to be adaptive, and therefore perform the context-dependent functions of

resilience, namely: advance assessments of the system's capacities and weaknesses, investments in vulnerable components of the system before a crisis, reinforcements during the emergency, and review of performance after a crisis.

"We are tremendously grateful for what The Rockefeller Foundation's partnership and investment over the past three years has enabled IGC to achieve," said Jonathan Leape, Executive Director of IGC. "In particular, the support enabled us to respond proactively and flexibly to the needs of the Sierra Leonean Ministry of Health and Sanitation and work in effective collaboration with them and other partners on the ground."

"We believe that IGC's work in collaboration with the MoHS and other partners has contributed to a more resilient healthcare system in Sierra Leone, by establishing the pre-conditions for resilience, and building future resilience," he added. "I am proud that The Rockefeller Foundation chose IGC as a partner to further its own aims to 'promote the well-being of humanity throughout the world'."



Credit: Getty Images

“We are tremendously grateful for what The Rockefeller Foundation's partnership and investment over the past three years has enabled IGC to achieve.”

Jonathan Leape, Executive Director of IGC



Joseph Rowntree Charitable Trust partners with LSE's Centre for Women, Peace and Security

Grant supports development of global digital resource to tackle violence against women and girls

"Tackling Violence against Women", a free and open-access online resource by LSE's Centre for Women, Peace and Security (LSE WPS), was launched in September 2016 to bring together regional and international human rights mechanisms and systems which can tackle gender-based violence.

Further development of the site, enabling LSE WPS to update, develop and actively manage the content and outreach, was facilitated by a £93,000 grant from the Joseph Rowntree Charitable Trust last year.

This tool is intended as an intermediary project – bringing together regional and universal human rights standards and jurisprudence, to make them accessible. Its goal is to provide information on the detail of what human rights law requires, on specific issues such as how laws on rape and sexual violence should be defined, what sort of protection orders should be available for women known to be at risk of domestic violence, and how they should be enforced.

Providing this information could assist survivors and their lawyers and advocates in identifying opportunities for changes in law and practice in each national system and providing information on the most progressive and gender-inclusive standards emerging in different regions around the world. These standards can be used as models for individual case advocacy in domestic, regional or global forums and as a template for legal and practical reforms within states.

The "Tackling Violence against Women" site also features a timeline of pivotal moments in the fight to end violence against women, as well as an interview series – "In Visibility" – with contributions from feminists around the world whose work has brought women's lived experiences into the public sphere.

"We are grateful for the Joseph Rowntree Charitable Trust's generous grant, which will help us to provide detailed insights into the content of international human rights law.



In turn, we hope these insights will increase the capacity of women's rights activists, lawyers and scholars to utilise international law more actively and strategically to press for domestic legal change, and advocate for enhanced protection," said Lisa Gormley, Policy Fellow, Centre for Women, Peace and Security.

Visit "Tackling Violence against Women" at blogs.lse.ac.uk/vaw/

Obstetric care access research boosted by AXA Research Fund fellowship

LSE Fellow's research supports strategic policy decision-making in Nigeria

The AXA Research Fund has selected LSE Health Research fellow, Dr Aduragbemi Banke-Thomas, for the AXA RF fellowship on Women's Health and Access to Healthcare.

The 18-month fellowship, worth €125,000, underscores the Fund's partnership with LSE to host outstanding researchers committed to improving people's lives through cutting-edge, innovative research that addresses global societal challenges.

Dr Banke-Thomas's research will provide critical evidence to support strategic policy decision-making for improved access to emergency obstetric care (EmOC) for pregnant women in Lagos State, Nigeria.

This contributes to efforts to reduce maternal mortality due to delays that women experience in arriving at EmOC facilities.

"I am truly excited about the opportunity afforded to me by this AXA research grant in partnership with LSE," said Dr Banke-Thomas. "Maternal mortality remains a huge challenge in many developing countries, but minimal attention has been placed on the delay in the travel of women to appropriate facilities. My research will provide much-needed evidence for the Government of Lagos, Nigeria to aid planning of essential maternal health services and ultimately contribute to reductions in maternal mortality."





Philanthropic scholarships **profoundly impact** students

Donors and Scholars reception celebrates philanthropic giving

LSE scholarship recipients have expressed their heartfelt gratitude and indicated, overwhelmingly, that receiving a scholarship has defined and changed their lives for the better.

At the annual Donors and Scholars reception held during the Lent term, recipients highlighted how their scholarship relieved

their families of a financial burden, took weight off their shoulders, and opened up a world where they no longer saw boundaries and limitations, but could grow as individuals and students.

This year, philanthropic scholarships supported 170 students from 39 countries, studying in 21 departments across LSE.

The generosity of LSE alumni, friends and supporters allows the School to fulfil its pledge to widen participation in university education and provide an outstanding experience to all talented students, regardless of background or financial circumstances.

“

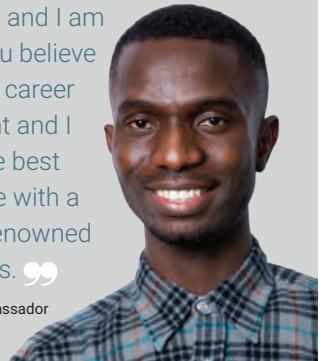
Although I attended a number of events at the School through the Widening Participation programme in 2016, I wasn't convinced that I would ever obtain a place here. This scholarship has taken a huge weight off my shoulders. It motivates me every day to utilise this rare opportunity I have been given to study without worrying about the financial burden. It has made me realise that with hard work I can achieve anything and this scholarship has played a significant role on this road to making my dream a reality. ”



Jesutofunmi Esther Somade (BSc Social Policy with Government, Richard Jonathan Clark Scholarship)

“

I am honoured to be the recipient of this scholarship and I am deeply grateful for the generosity which has made it available. My educational pursuits would not be possible without this and I am humbled by the fact that you believe in me. I have just begun my career in international development and I am delighted to study at the best institution for social science with a track record of producing renowned leaders across various fields. ”



Elvis Yarda (MSc Development Studies, Ambassador E.O. Kolade Scholarship)

“

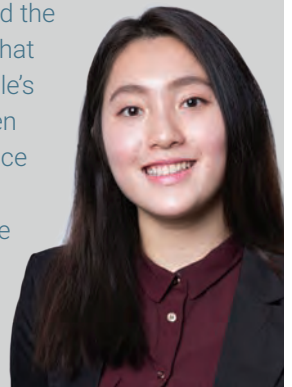
Receiving this scholarship has shown me how philanthropy has a direct effect on someone's life. I have always regarded philanthropy as a good cause, but an amorphic cause. I regarded philanthropy as something necessary for the betterment of humanity, but something only causing small effects on people's lives and the world around us. This scholarship has shown me that philanthropy can define and change our lives in a direct way. ”



Carly Gottroff (MSc Applied Social Data Science, American Friends of LSE Scholarship)

“

The scholarship has highlighted the sheer magnitude of influence that philanthropy can have on people's lives. This scholarship has given me the opportunity to experience things I could previously only dream of and shaped my future path beyond what I had previously imagined. ”



Sidney Lim (BSc Politics and Economics, Singapore LSE Trust Undergraduate Scholarship)

If you would like to discuss how you can profoundly impact students through scholarships, we would be delighted to explore the opportunities with you. Please contact Dee Brecker, Head of Philanthropy, at advancement@lse.ac.uk



Journey to legacy

Betty and David Icharia will leave a legacy to LSE in recognition of the significant impact of Betty's LSE education.

It has been a life of journeys that has led Betty (MSc (Econ) Development Studies, 1993) and David Icharia to leave a legacy gift to LSE in their will – journeys that have taken them from their birthplaces in Kenya, to Aberdeen, Toronto, Guelph, Montreal, Manchester and London; then Vancouver, Calgary, and now Edmonton, in Alberta Canada.

A scholarship to LSE

The Icharias' journeys began in Kenya; specifically, in farmland just outside the capital city. But it was not love at first sight for the couple. "Certainly not," laughs Betty Icharia (née Luusa), "I was 9 and he was 11 at the time!" The neighbour of family friends, David lived outside Nairobi, and happened to meet Betty's family, who were visiting their friends in the area.

Betty's own journey in the UK began at the University of Aberdeen – an unusual choice, she reckons, as it was "my parents' plan to keep (my siblings and me) out of trouble".

She did well, receiving an offer from LSE to study for a master's in Development Studies, but then there was a catch: "My parents said they would prefer not to continue funding my studies, if possible, as my younger siblings had yet to get through university."

Understanding the situation, but still hopeful, Betty applied for a scholarship to LSE. It came in the form of an Overseas Development Institute Studentship, which paid for tuition fees and a generous living allowance. "I don't know how to describe the feeling of receiving this news," she recalls. "I had all these aspirations, and to know that I could realise them with the scholarship – I almost passed out with excitement."

"I started making plans that would have been quite different without this opportunity. I wanted to study International Development at LSE because I had dreams of 'changing the world' in whatever small way I could, and it made sense to acquire the knowledge required to help resolve development challenges, especially those I was aware of back in Kenya."

Life in London

The LSE scholarship brought her to the heart of London, the "most amazing city in the world to me – one with a special vibe". Classes at LSE were intellectually stimulating, with "incredible professors dealing with quite difficult topics around international development". These were combined with late night studying sessions, and enjoying all that London had to offer.

"I had a diverse group of friends, a very different mix of individuals. Some quite young and some very mature; many at the time were from South America, Asia, Scandinavia, Africa and North America," says Betty.

"My time at LSE changed my life. Professionally, the LSE name and reputation opened many doors for me; personally, the intensity of the experience I had at LSE definitely helped me to learn the importance of balance, and develop into the calm and self-assured person I am today."

After graduation, Betty spent several more years in the UK before eventually returning to Nairobi in the late 1990s where she reconnected with David. She found a role at the British High Commission which brought her back to the UK occasionally. "Those were really good years," she reflects. "I loved my work as a senior commercial officer with the UK Department of Trade and Industry's local Commercial Section. It enabled me to advise on business, trade and investment priorities between the UK and Kenya from an economic and international development angle, which is what I had trained for."

Canada

Betty and David married in 2001. Their yearning to try something new took the Icharias to Vancouver, British Columbia, Canada, where they lived for 16 years, and where Betty helped start the Vancouver chapter of the Canadian Friends of LSE.

After a brief stint in Calgary, Alberta for Betty, the couple moved to Edmonton in Alberta in 2017 when Betty received a transfer to the head office of her company.

It was in the unremarkable process of moving to Edmonton that the Icharias came upon legacy giving.



Betty and David Icharia by Dunnottar castle in Aberdeen in 2015.



"Different Canadian provinces have their own unique policies about wills and estates," says David. "We had to undertake some legal administration to update our wills and estate planning when moving between provinces, and our lawyer in Edmonton suggested that we consider where we would like our estate to go, since we don't have children."

The Icharias decided on mirror wills – identical wills where one person in a couple leaves their estate to the other in the event of their passing – with the aim to leave something behind for those seeking an opportunity to improve their lives and to make a difference to others through education.

"A good education is one of the most important gifts you can give or receive," resumes Betty. "That's something my parents always reiterated to their children. I feel that if even one person enjoys the benefit of an LSE education that I've had, the contacts I've made, the impact it has had on my life, and the doors that the LSE brand has opened for me, then our legacy gift would be worthwhile."

David supported the idea, and they have generously decided to jointly leave half of their estate to LSE, and the other half to specific family members.

What would Betty's message be to anyone considering bequeathing a gift in their will to LSE? "I cannot overstate the benefit the scholarship and the opportunity to study at LSE had on my life, individually, and to my community, more widely. As one of the students who benefited in this way, I feel very strongly about supporting the School, and a legacy is a great way to do so. I just want to pass it on and I'm very grateful that my husband agrees with and supports this plan."

“ I feel that if even one person enjoys the benefit that I've had, the contacts I've made, the impact it has had on my life, and the doors that the LSE brand has opened for me, then our legacy gift would be worthwhile. ”

Betty Icharia



At Betty's graduation ceremony in 1993. From right: Betty mother Irene Luusa, Betty Icharia, Professor Ian Rowlands (Diploma in International and Comparative Politics 1988, PhD International Relations 1992) and Professor James Putzel, (currently Professor of Development Studies, Department of International Development).

Leaving a legacy to LSE

I loved the rigorous analytical discipline instilled by wonderful lecturers

LSE established my core values in life.

"The aim of argument, or of discussion, should not be victory but progress."
Karl Popper

WRIGHT'S BAR

Please visit lse.ac.uk/legacygiving, or contact Viet-Anh Hua, Philanthropy Manager (Legacies) at +44 (0)20 7852 3654 or legacy@lse.ac.uk, to find out how you can help secure a strong future for LSE with a gift in your Will, and have a lasting impact to benefit generations to come.



Engaging alumni in shaping the future

LSE 2030 presents new opportunities for alumni around the world to connect with the School. Thomas Kern (MSc (Econ) Government 1979), Vice-chair of the LSE Alumni Association, outlines the ways in which alumni volunteer leadership is working closely with the School to help represent alumni interests and shape future alumni engagement.

All of us in the LSE alumni volunteer community are excited about LSE's new strategic vision. Alumni everywhere participated in significant numbers throughout the strategy consultation process and, this past spring, the Alumni Association's Executive Committee was privileged to meet with Director Minouche Shafik as part of the internal launch of LSE 2030.

One comment in particular struck a chord with me. Minouche remarked, "As a proud LSE alumna, I am incredibly honoured to have the responsibility of leading the School and helping to shape its future. I relish the opportunity for LSE to lead by example through the coming years, and to use our unique strengths to actively contribute to positive change in the world."

Like her, we also experienced firsthand as students the challenge that LSE posed to us: to be the best we could be in our chosen fields. And now LSE challenges us once again, this time to draw on what our years at the School helped us become and to serve in an international community committed to LSE's ambition to be the best in its field, the world's leading social science institution with the greatest global impact.

LSE's Alumni Association has long recognised the importance of being a voice of and for alumni around the world. Details of the Association, its volunteer leadership, and the more than 90 regional and special interest groups that comprise it can be found at alumni.lse.ac.uk. All of us who have attended the School are members of the LSE Alumni Association and if you are not aware of or involved in a regional or special interest group, have a look for the group pertinent to you and get involved!

Our purpose is simple:

The Association represents the interests of all LSE alumni and helps to strengthen relationships between you and the School by providing advice on alumni relations programming, and supporting the broader objectives of LSE in engaging with its international alumni community.

Our aspirations as alumni to serve alongside faculty and staff on behalf of the School are embraced in LSE 2030's details. Importantly, the School emphatically declares in its Guiding Principles its intention to extend its impact and reach and "collaborate with local,

national and international partners to forge new connections and challenge old ways of thinking involving our alumni, friends and partners in the debate".

Likewise, the Strategy's priority to Develop LSE for Everyone declares that it will "engage our alumni, friends, and partners" in an inclusive and comprehensive way. These commitments to alumni embodied in LSE 2030 speak to the needs and aspirations we all have upon embarking on our professional journey after our years at LSE. Alumni Association leaders, whether on the Executive Committee or in the many regional and special interest groups around the world, focus tirelessly on forging and retaining an alumni network of services and support, not only of alumni with alumni, but alumni with the School, its faculty, staff, and students.

The relationship of the Alumni Association with LSE's team (comprising Alumni Relations) is a longstanding one which has become significantly closer over the past 18 months, and we anticipate that there will be much to be done in concert with LSE 2030 when it comes to fulfilling the vision of alumni's strong partnership with the School.

This September marks the official, external kick-off of LSE 2030 and, again, alumni will be an integral part of it. The LSE Alumni Leadership Forum (a biennial convening of alumni leaders from the UK and around the world to share ideas, experiences and needs to support alumni services and engagement, and to interact with School leaders and faculty) takes place on 20-21 September on campus, preceded by the LSE 2030 launch in the Old Theatre on the evening of Thursday 19 September. Alumni leaders from around the world are being invited to attend both events. To learn more, contact your regional or special interest group leaders for more information – you can find their details at alumni.lse.ac.uk/groups

We look forward to the role of and opportunities for all alumni in this new world called LSE 2030!



Dame Minouche speaking at the LSE Alumni Association Leadership Forum



Strengthening LSE's global engagement activity

During the 2018/19 academic year, LSE Director Minouche Shafik has attended a range of high-profile alumni events worldwide – from South East Asia to Latin America and the US – with plans for further international travel in the coming months.

Recent highlights include a discussion on the global financial crisis with Professor Lord Nick Stern at the Friends of LSE Hong Kong's 35th Anniversary, a preview of the themes and plans for LSE 2030 alongside Professor Andres Velasco in Santiago de Chile and Washington, and a panel discussion with LSE entrepreneurs in San Francisco.

These events, organised in collaboration with alumni groups in the area, provided a unique opportunity for alumni to meet with the LSE Director, participate in the vision of LSE 2030 and reconnect with the intellectual life of LSE.



Welcoming the next generation of LSE alumni

The global event series Destination LSE over the summer months connects current students and offer holders who are about to join the School with our global network of alumni and friends.

Hosted by alumni groups across the world, these events enable graduates to share their LSE experiences, offer advice to younger generations and network with fellow alumni in their local area. They are a great example

of the significant role the alumni community plays in supporting the School's global reach.

We are truly grateful to our committed network of alumni volunteers who every year support the delivery of over 100 events across the globe – these could not happen without their dedication and hard work.

The majority of Destination LSE events this year are taking place between 29 July and 25 August 2019. Please visit **alumni.lse.ac.uk/dlse** for further information.





LSE Alumni Centre opens its doors

In September we will formally open our LSE Alumni Centre in the School's new flagship Centre Building, which will transform campus for the entire School community.



The LSE Alumni Centre is a physical manifestation of Priority 3 in LSE 2030: to develop the School for everyone. This dedicated space supports the commitment to “facilitate lifelong relationships with LSE alumni, friends and partners, and encourage active involvement with life at the School”.

LSE is the world's most global university, reflected by our alumni network: more than 150,000 people in 200 countries. While the Centre will provide a front door to campus, offering provision of all alumni relations services, it will also serve as the physical hub from which regular events and programmes are coordinated for the benefit of the entire community, wherever you are in the world.





We want to ensure you remain connected with and contribute to the intellectual capital of the School.

Alumni will be able to register for and collect LSE Library cards, take guided tours of campus with current students, use the space in the daytime to meet LSE friends from across the School community, and attend a range of events, from departmental updates to careers-focused workshops, and from pre-Public Lecture receptions to London alumni and special interest group networking evenings.

Through the Centre, alumni will also have formal and informal opportunities to connect with and support current students, participating in initiatives that are designed to enhance the student experience:

- **Departmental Student/Alumni activities** – offering students tailored opportunities to meet with alumni to learn about their career paths and lives since graduation.
- **LSE Volunteer Centre workshops** – connecting students interested in volunteering with alumni working in NGOs and voluntary organisations.

- **Space to innovate** – the School's entrepreneurial programmes spearheaded by LSE Generate will make use of the Alumni Centre for a range of engagement activities, such as student/alumni collaboration, events and launches. We would also expect alumni to return to share their own start-up experiences in an intimate environment with members of the alumni network.

- **LSE "family"** – creating a support network for overseas students who can meet with their host LSE "families".

Facilities

The Centre will be open from 9.30am-5.30pm Monday to Friday (excluding School closure days) in addition to providing a varied events programme. It will be staffed by experienced members of the Alumni and Supporter Engagement team, and students.

Key services the Centre will offer include:

- Issuing of Alumni Library Cards and associated data updates
- Free Wi-Fi access (currently via The Cloud, although other solutions are being explored)
- 2 x computer terminals, and space for using laptops and facilities for charging devices

- Complimentary tea, coffee, cold drinks, newspapers, maps and LSE information
- Accompanied campus tours (with current LSE students)
- Bookable meeting room and space.



Marshall Building to offer **sports and arts** spaces in addition to academic, teaching and research facilities

While enhancing the School's learning environment and infrastructure, the Marshall Building will help address the lack of sports and arts facilities at LSE



Design proposal – External view

LSE at the heart of London

Finding space at LSE has always been a challenge. The School was established in the heart of London to engage with its institutions; its sense of community built around learning and ideas for societal impact, and less around rolling lawns and collegiate life.

An unintended consequence has been a lack of provision of space for activities that promote health and wellbeing. The new Marshall Building, which opens in 2021, will help to rectify this imbalance with high-specification arts and sports practice facilities.

The building has been made possible by transformative philanthropic support from Sir Paul Marshall, whose name it will bear. It will house The Marshall Institute for

Philanthropy and Social Entrepreneurship, the Department of Management, Department of Finance and Department of Accounting, as well as research centres.

Across two of its basement floors, it will also offer a multipurpose sports hall, two full-sized squash courts, a dynamic weights room and three music/arts rehearsal rooms. There will also be an open viewing gallery into the hall and courts. The sports facilities, including the Sport England-standard multi-use sports hall, will give LSE sports teams a place to host matches with other universities and a place for their supporters to spectate, promoting community and a renewed sense of pride.

The Marshall Building's RIBA award-winning design will be environmentally sustainable, provide innovative teaching and research workspaces, enhance the public space around Lincoln's Inn Fields, and inspire future generations of students and academics.

LSE sports and arts facilities

The School currently has a few music practice rooms, gyms, and activity studios onsite, three hard tennis courts and two netball courts at Lincoln's Inn Fields, and 23 acres of playing fields in New Malden, Surrey, accessible via a 20-minute train ride from Waterloo train station (effectively 40 minutes from campus). Students also have access to the University of London Union gym and swimming pool at Malet Street, a 20-minute walk from the School.

"LSE is no 'ivory tower'. We convene in the heart of London, the most global city in the world, but this necessarily means we can't offer as much space for arts and sporting events as we would like," says Virginia Beardshaw CBE (Diploma in Social Administration 1975), Chair of LSE's regular giving programme.

"We're doing the best with the facilities we have," continues Virginia. "With the support of gifts from our regular giving community, over a number of years we have supported numerous students to achieve a greater degree of health and wellbeing, including LSE's Sports Ambassador Ollie Cook, whose team won the men's eight at the rowing World Cup for Great Britain in 2013, to achieve their dreams. And a particular pleasure of the past five years has been supporting women's sports, including rugby and football."

Virginia is also mindful that our staff and students need to be supported in other ways than intellectually. "A holistic LSE student experience is enhanced considerably by programmes which promote health and wellbeing," she says. "And the Marshall Building's facilities will help to deliver a great student experience."

Contact LSE Philanthropy and Global Engagement at advancement@lse.ac.uk for details of how you could support sports and arts programmes at LSE.

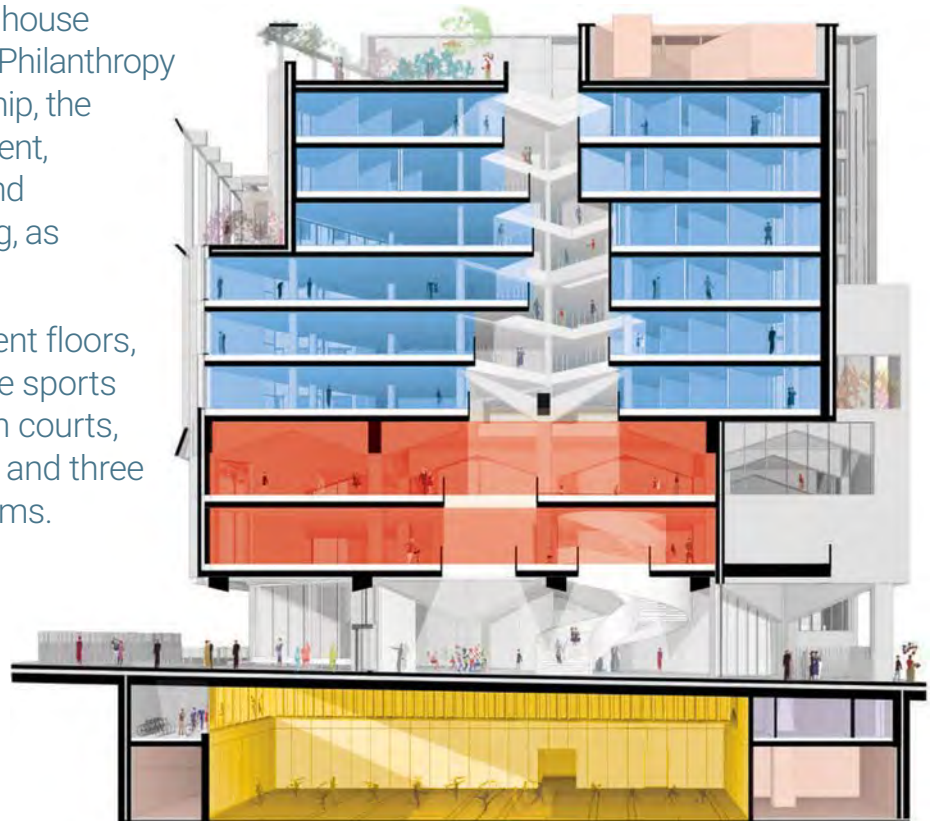


The Marshall Building will house The Marshall Institute for Philanthropy and Social Entrepreneurship, the Department of Management, Department of Finance and Department of Accounting, as well as research centres.

Across two of its basement floors, it will offer a multipurpose sports hall, two full-sized squash courts, a dynamic weights room and three music/arts rehearsal rooms.

Key

- Academic and Research
- Teaching and Learning
- Sports and Arts



Design proposal – perspectival section of the Marshall Building





Wolfson Foundation awards £1 million towards the **ongoing transformation** of LSE's campus

The Wolfson Foundation has awarded £1 million to LSE towards its Centre Building development – the largest capital project in the School's history.

This latest generous award is a continuation of a successful partnership between the two organisations dating back to 1972. The Wolfson Foundation's philanthropic support for LSE totals almost £4 million and in 2000 they were added to LSE's Benefactors' Board, which recognises the impact of transformative philanthropy at the School.

The Centre Building development has created a new 15-storey building that forms a key part of the School's vision to build a more flexible and inclusive campus, which matches its world-class reputation for research, education, and innovation.

The foundation's grant will support a suite of flexible teaching and learning spaces in the new building. These dynamic spaces will facilitate world-leading research creation and knowledge exchange, and promote an ecosystem in which high-quality research and teaching inform and feed into one another.

Paul Ramsbottom, Chief Executive of the Wolfson Foundation, said: "The Wolfson Foundation supports and promotes excellence, with a strong emphasis on research and learning. Our partnership with LSE is therefore an important and obvious one, and dates back over a number of decades. We are delighted to be involved in the Centre Building development and admire the way



in which the School is going from strength to strength under the leadership of Dame Minouche."

Minouche Shafik, LSE Director, said: "It is a source of great pride that LSE has once again been chosen as a Wolfson Foundation grant recipient. As with previous awards, the impact extends far beyond the immediate monetary value. This generous endorsement demonstrates its continued faith in the School, and will act as a powerful catalyst as we seek to leverage additional support."

She added: "Creating innovative teaching and learning spaces is integral to our commitment to ensure our students are educated not only

by exceptional academics, but also within an exceptional learning environment. This will help to transform our students' entire experience and, in turn, continue to inform our world-leading research."

The Wolfson Foundation is an independent charity that supports and promotes excellence in the fields of science, health, education and the arts and humanities. Since it was established in 1955, over £900 million (£1.9 billion in real terms) has been awarded to more than 11,000 projects throughout the UK, all on the basis of expert review.



“ This will help to transform our students' entire experience and, in turn, continue to inform our world-leading research. ”

Dame Minouche Shafik, LSE Director



The LSE **student experience** and philanthropy

Regular giving contributions provide support for current students

Regular giving offers significant support to help widen student participation in higher education through the New Futures Fund scholarship and bursaries, as well as awarding funding to initiatives that enhance student life on campus, promote innovative teaching and support LSE's excellence in research.

The Students' Union Fund, a new initiative for this year, received half of its £300,000 budget from regular giving. Open to all students at LSE, the Fund aims to support LSE students for deserving projects centred around educational impact, wellbeing and community building.

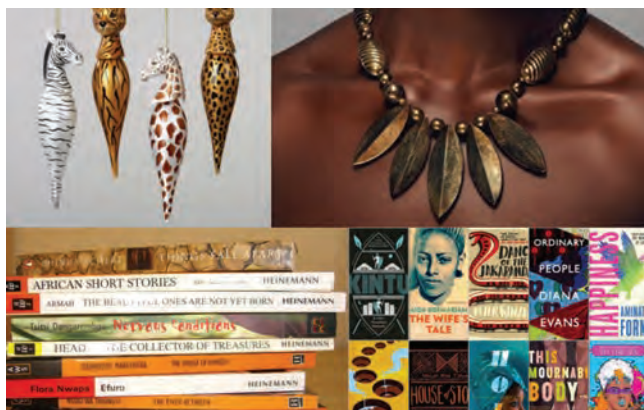
Approved applications were seen to have incorporated these three pillars. The latest application round saw 39 student-led projects funded.

"Every contribution made to regular giving makes a significant improvement to the experience of student life at LSE," says Virginia Beardshaw CBE, Chair of LSE's regular giving programme. "These donations are an integral part of enabling student projects, which make a strong educational impact, and improve the health and wellbeing of the LSE student community."

Regular giving-funded LSESU projects this year include:

- The Israel Technology Trip, comprising 50 students of differing demographic backgrounds who had not visited Israel before. Students visited a range of start-ups, incubators and larger groups as well as a number of major cultural sites.

- An International Development Health Policy Hackathon, where students collaboratively developed policy recommendations on international health policy issues in a fun and competitive environment, with the support of LSE academics.
- The Africa Market, organised by the African and Caribbean Society in collaboration with this year's LSE Africa Summit as part of its Arts and Cultural Exhibition showcase on campus.



The Africa Market at the LSE Africa summit



Students at an LSESU event



“Every contribution made to regular giving makes a significant improvement to the experience of student life at LSE.”

Virginia Beardshaw CBE, CBE (Diploma in Social Administration 1975),
Chair of LSE's regular giving programme

Regular giving programme builds on progress of former LSE Annual Fund

As part of our efforts to ensure all LSE alumni, friends and partners feel part of a coordinated and concerted effort to enhance the School, the regular giving programme has been introduced this academic year. It replaces (while building on) the wonderful contributions made by the LSE Annual Fund.

Regular giving will continue to provide unrestricted, immediate use funding for a range of projects across LSE that widen participation, improve the student experience, enhance LSE's academic departments and power its research centres.

Find out more about regular giving opportunities at lse.ac.uk/regulargiving



Students' **research and career prospects** enhanced by assistantships

Alumni gifts support LSE US Centre's research assistant programme

Across LSE, students are supported in ensuring their LSE education extends beyond the classroom to include a focus on being prepared for their careers after graduation.

One such initiative is the undergraduate research assistantships programme with the United States Centre at LSE, which is in its second year. It encourages US-related interdisciplinary research collaborations between academics and undergraduate students. This academic year, five students benefited from assistantships through the programme.

Recipients of the first assistantships praised the rare opportunity the programme afforded undergraduates to be able to engage in research with faculty members. They outlined how they felt more confident as researchers, felt encouraged to engage more deeply with

their own department and fields of study, and were better equipped to navigate the research process.

The programme also improved their career prospects. "Every interview I went to, they all commented on my Research Assistantship. It was definitely something that stood out on my CV," said Olivia Horn, who worked with Dr James Morrison in the Department of International Relations. "The programme expanded my skills in a way my other work experience could not."

This year's recipients assisted with research in areas related to International Drugs Policy, International History, and Islamophobic discourse in the international media.

"Being an LSE student is more than just coursework and qualifications – it's also about starting to build a career," said Adeola Akande

Pierre-Noël, Centre Manager for the US Centre. "That is why we are immensely proud of the five Undergraduate Research Assistantships we offered this year."

The programme also benefits the academic community, enabling faculty to work alongside and learn from their students in new ways. Professor Peter Trubowitz, Director of the US Centre, commented: "The US Centre undergraduate research assistantship programme is a "win-win" for LSE students and faculty alike."

The programme is an example of numerous School-wide initiatives enhancing the student experience that are supported annually by regular giving by LSE alumni and friends.



The US Centre

The United States Centre at LSE is a hub for global expertise, analysis and commentary on America. Its mission is to promote policy-relevant and internationally-oriented scholarship to meet the growing demand for fresh analysis and critical debate on the US.

It operates three research themes, namely, rethinking America's role in the world; governing America in the 21st century; and Globalisation and the Reshaping of America.

The Centre builds on a long history of academic and philanthropic connections between the US and LSE, from the Rockefeller Foundation's generous gifts to the School in the 1920s and 1930s, to the "who's who" of American opinion-makers who studied at the School during the Cold War, to the hundreds of US students who now attend LSE every year.

From left to right – Joss Harrison, Maitrai Lapalikar and Maria Cerdio, part of the US Centre's 2018/19 Undergraduate Research Assistantships programme.



The State of the States wins Guardian University Award for digital innovation

Alumni and friends-supported website recognised as important tool for exploring US politics and policy issues

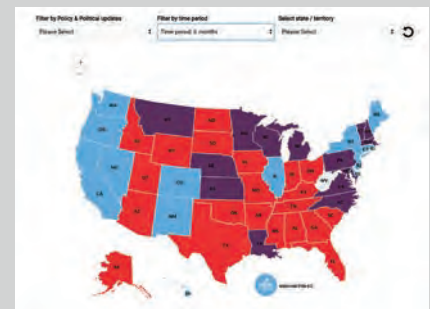
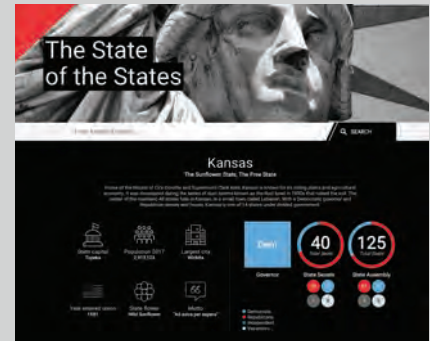
The State of the States has won the Guardian University Award for digital innovation. The website, a free-to-use, apolitical resource, was recognised by a panel of judges as an important tool for exploring US state politics and policy issues.

The website now includes over 1,400 news and blog updates and 2,500 data points from across the 50 states and Washington DC. It was put together in 2018 by American Politics and Policy at LSE (USAPP) blog editor, Chris Gilson, and LSE master's student, Sarah Scaffidi.

"We're excited to have been recognised as a best practice inspiration to other websites," said Chris Gilson. "One of the features we're most proud of is the ability for users

to examine trends across the states by filtering updates based on policy areas. This means that users can very quickly get a sense of how an issue is evolving and where developments are occurring."

Visit The State of the States at thestateofthestates.org/



US Centre hosts Speaker of the US House of Representatives, Nancy Pelosi

Wide-ranging conversation with Director of US Centre

In April, the US Centre hosted Nancy Pelosi, 52nd Speaker of the US House of Representatives, in conversation with LSE's Professor Peter Trubowitz, Department Head of International Relations and Director of the US Centre. In a wide-ranging discussion, Speaker Pelosi addressed the UK's relationship with the US post-Brexit, the US-China relationship, her party's burgeoning presidential primary field, and the issues the Democratic Party should focus on in the 2020 US Presidential race.

The event filled the Old Theatre to capacity, and was oversubscribed by six times. The conversation was also livestreamed on Facebook where it has received more than 15,000 views.



Speaker Pelosi in conversation with Professor Peter Trubowitz



LSE Benefactors

Our LSE Benefactors are visionary philanthropists and partners whose transformative support for the School – from our founding to the present day – has significantly shaped LSE’s development into a world-leading social science university.

Their generosity and foresight has enhanced the School, benefitting past, current and future generations of LSE students and staff.

The names below are listed on our Benefactors’ Board, situated in the lobby entrance of the Old Building, as enduring recognition of the School’s appreciation.

Pre 1997

Sir Ratan Tata
BP
Rockefeller Family Foundations
Society for the Promotion of Contemporary
Hellenic Studies Abroad
Suntory Holdings Ltd
Toyota Motor Corporation
An anonymous donor

1997

Heritage Lottery Fund
Michael Peacock Charitable Foundation

1998

Leverhulme Trust
Wellcome Trust

1999

Victor Phillip Dahdaleh
Charitable Foundation
Deutsche Bank
An anonymous donor

2000

Standard Chartered Bank
Wolfson Foundation

2002

Davina Francescotti
Mario Francescotti
An anonymous donor

2003

Nuffield Foundation

2004

Alfred Herrhausen Gesellschaft, The
International Forum of Deutsche Bank

2005

Sir Stelios Haji-Ioannou

2006

The Abraaj Group
Vincent Kin Yuen Cheng
Ford Foundation
Arif Naqvi and Fayeza Naqvi
Open Society Foundations
Reserve Bank of India
Joseph Rowntree Foundation
State Bank of India

2007

Kuwait Foundation for the
Advancement of Sciences (KFAS)
Dr Paul Woolley
An anonymous donor

2008

The Emirates Foundation for Philanthropy
The Grantham Foundation for the
Protection of the Environment

2009

John Templeton Foundation
The Professor Bob and Dilys Rawson Legacy

2010

The Aman Trust
Firoz Lalji and Najma Lalji
The Peter E. I. Lee Legacy
National Bank of Greece
Paulson Family Foundation

2011

Emmanuel Roman

2012

Bill Bottrill
Professor Saw Swee Hock

2013

Richard Karl Goeltz

2014

The Lees Charitable Foundation
The William Simpson Legacy
Stiftung Mercator

2015

AXA Research Fund
Margot Lachmann, in memory
of Ludwig M Lachmann
Sir Paul Marshall
Standard Bank Group

2016

The Atlantic Philanthropies
Santander Universities UK
The Sutton Trust

2017

Bill & Melinda Gates Foundation

2018

Dr. Frederik Paulsen Foundation
Kadas Family Charitable Foundation



THE LONDON SCHOOL
OF ECONOMICS AND
POLITICAL SCIENCE ■

Supporter Roll 2017/18

Recognising contributions from
volunteers, donors and partners in the
previous academic year.



Our volunteers

LSE is grateful to alumni and friends around the world whose generous commitments of time, energy and expertise during 2017/18 helped to strengthen the School and the global alumni network.

From welcoming offer holders into the LSE community to providing careers support to current students and recent graduates, and from coordinating regional and special interest events to organising and hosting networking activities, our volunteers are an integral part of the School. In addition to everyone listed, we express our sincere gratitude to all LSE volunteers.

Members of Court

Lord Victor Adebawale
Professor Jason Alexander
Justice Aina
Virginia Beardshaw CBE
Dr Catherine Bell
Vivina Berla
Professor Julia Black
The Rt Hon Lord Paul Boateng
Tamara Box
Daniel Cayford
Jude Chisom Erondu
Dr Christine Chow
Rosehanna Chowdhury
Alastair Da Costa
Bronwyn Curtis
Gillian Day
Zulum Elumogo
Tina Fahm
Christopher Fairley
Lord Daniel Finkelstein OBE
Neil Gaskell
Richard Goeltz
Lord David Gold
Jeffrey Golden
Ron Grushka
Lee Henry
Dick Hibberd
John Hughes
Nigel Hugill
Shamayal Hussain
Professor Simona Iammarino
Professor Emily Jackson
Jagdeep Jagpal
Margot James MP

Kalika Jayasekera
Musonda Kapotwe
Gauri Kasbekar Shah
Professor Paul Kelly
Mustafa Khanbhai
Dr Ruth Kosmin
Martin Lewis OBE
Dr Susan Liautaud (Vice Chair)
Professor Christian List
Rishi Madhani
Waleed Malik
Patrick Mears OBE
Mark Molyneux
Dr Wendi Momen MBE
Roger Mountford
Azhar Muhammad
Dr Daleep Mukarji
Lord Paul Myners
Professor Eric Neumayer
Ali Nikpay
Professor Michael Otsuka
Mahatir Pasha
Gita Patel
Dame Shirley Pearce (Chair)
Professor Michael Power
Dr Katherine Rake OBE
Alison Rankin Frost
Professor Terhi Rantanen
Ali Rashidian
Ed Richards CBE
Karina Robinson
Juan Santos Arango
Dame Minouche Shafik
Aamna Shahab
Michael Sheren

Lutfey Siddiqi
James Slater
Dr Angela Spatharou
Harriet Spicer
Elisabeth Stheeman
Lady Elizabeth Vallance
Professor David Webb
Richard Wildman

Members of Council

Justice Aina
Professor Jason Alexander
Professor Julia Black
Alastair Da Costa
Chukwuzulum Elumogo
Christopher Fairley
John Hughes
Nigel Hugill
Professor Emily Jackson
Dr Ruth Kosmin
Dr Susan Liautaud (Vice Chair)
Roger Mountford
Ali Nikpay
Mahatir Pasha
Dame Shirley Pearce (Chair)
Professor Terhi Rantanen
Dame Minouche Shafik
Elisabeth Stheeman

Emeritus Governors

Baroness Rosalind Altmann CBE
The Late Bernard Asher
Elisabeth Astall
Dr John Avery Jones CBE
Dr Hugo Banziger
Stephen Barclay
Sir Anthony Battishill GCB
Presiley Baxendale QC
Suzy Black
Jonathan Black
Cherie Booth CBE
The Rt Hon Baroness
Virginia Bottomley PC
Sir Clive Callman
Angela Camber
Professor William Cornish
Victor Dahdaleh
Roger Davies
Ian Hay Davison
Sir Evelyn de Rothschild
Mark Denning
Leslie Dighton
Dr Christine Downton
Alan Elias
Mario Francescotti
Timothy Frost
Sir Patrick Gillam
Richard Goeltz

David Goldstone CBE
James Goudie QC
The Rt Hon Lord Anthony
Grabner QC
Dr Loyd Grossman CBE
Sir Stelios Haji-Ioannou
Naomi Hass-Perlmán
Baroness Elspeth Howe CBE
Johannes Huth
Will Hutton
Margaret Hyde OBE
Professor The Rt Hon
Sir Robin Jacob QC
Professor Kate Jenkins
Peter Jones CBE
Lord Frank Judd
Wol Kolade
Anne Lapping CBE
Dr Spyridon Latsis
Sir Michael Lickiss
Keith Mackrell
Ashley Mitchell
Anne Page
Michael Peacock OBE
Emmanuel Roman
Lord Maurice Saatchi
Bryan Sanderson CBE
Helen Sasson
Barry Sheerman MP
Sir Richard Shepherd
Brian Smith
Henrietta Stephen MBE
Cato Stonex
Michael Thomas CMG QC
Baroness Glenys Thornton
Dr Sushil Wadhwani CBE
Wendy Weinberg
Sir Mark Weinberg
Professor Sir Robert Worcester

Alumni Association Executive Committee 2017-20

Miranda Germani
Alice Huang
Thomas Kern (Vice Chair)
Katja Knoechelmann
Patrick Mears OBE (Chair)
Jason Milner
Abhilash Puljal
Julie Samnadda
Shilpen Savani
Christopher Toy
Dr Pablo Trevisan
Pia Wagner



**Our dedicated alumni
volunteers 2017/18
Listed by decade of
first graduation**

1950-59

John Charman
George Grosz
Professor Walter McMahon
Sander Rubin
George Soros
Dr David Spurrell
David Stieber
Paul Volcker
Dr Robert Weinberg

1960-69

Thomas Allen
Dr Anthony Cook
Dr Peter Davis
Jorge de la Mora
Terence Dillingham
Pierre Dinan
Dr Christine Downton
Conrad Foa
Jeffrey Forrest
Richard Karl Goeltz
Michael Goh
Stephen Goudge
Margaret Griffiths
Malcolm Hamilton
David Heleniak
Dr Ann Imlah Schneider
Swadesh Kalsi
Dr Malcolm Knight
Firoz Lalji and Najma Lalji
Alan MacDonald
J Patrick Michaels Jr
Ian Morrison
James B Nicholson
Ubadigbo Okonkwo
Hilary Onukogu
Robert Rubin
Michael Sarri

1970-79

Barton Alexander
Raph Appadoo
Phyllis Barrantes
David and Kitty Beecken
Mark Berenblut
Jeremy Clift
George Davidson
Robert Douglas
Kent Ennis
Stewart Feldman
Howell Ferguson
Hon Stuart Friedman
L Genereux
Jeffrey Goldstein
Pablo Halpern Montecino
Paul Jarah
Gurubachan Johal
Christopher Kalla-Bishop
Dr Andrew Kane OBE

John Kerr
Professor Dan Korn
William Lau
Lee Hau Hian
Yoko Maruyama
Ken McNeil
Brian Mitchell
Michael Morris
Richard Oram
Mario Palma Rojo
Gary Perlin
Dr Gordon Peterson
Michael Phelps
David Sahr
Henricus Schaapveld
Professor Peter Shergold
Richard Swomley
Ann Tan Gek Ching
Christakis Taoushanis
Jenny Tooth OBE
Nigel Williams
Felipe Zarate Stader

1980-89

Shariq Abdullah
Arjun Aggarwal
Mohammed Alkali
Praxoulla Antoniadou Kyriacou
Sinan Arslaner
Jason Barnett
David Bizer PhD
Elizabeth Botsford
Sabine Chalmers
James Coyne
Alexander Crawford
Andrew Crowell
William Duhamel
Simon Glover
Edward Greenspon
Dr Rony Hamaui
Ruth Harte
Steven Hercher
The late Sir Jeremy Haywood CB
Der-Chin Horng
David Hudson
Sadiq Jafar
Gudbjorg Jonsdottir
Altamash Kabir
Dr Thomas Kaiser-Stockmann
Kathleen Kelley
Dr Teunis Kralt
Sally Laight
Ambassador Catriona Laing CB
Philippe Lam Shin Saw
Dr Harilaos Lambropoulos
Dr Abiodun Layonu
Deborah Lehr
William Lo
Nancy Manning
Heathcote McMichael
Michael Miller
Clara Montanez
Dr Gerd Mueller-
Brockhausen MSc (Lond)
Jeongho Nam
Richard Nesbitt
Charles Ng Cheng Hin

Dr Jorge Nowalski
Dr Nayantara Palchoudhuri
Pedro Pfeffer
John Phelan
Breck Platner
Ravi Prasad
Eduardo Quijano-Aponte
Fernando Quiroz Robles
Stephen Rogers
Bertrand Rossert
Kenneth Rotman
David Rudnick
Blair Sanford
Eleonore Schlaich Charrez
Bedi Singh
Ashwajit Singh
Erich Spangenberg
Richard Stein
L Stone
Kay Tay
Chandresh Thakrar
James Thomas
Hilary Till
Barbara Trebbi
Nancy Troxler
Colin Underwood
Milton Vega Bernal
Guia Villavicencio
David Wah
Dr David Woodward
Siew Wah Yap

1990-99

Amr Abdel Ghany
Hisham Abdul Rahim
Kim Aiomanu
Abdul Al-Halabi
Augi Anagnostou
Eleni Argyrou
Ferial Aumeerally
Adam Austerfield
Axel Baeumler
Priscilla Balgobin
Christine Bartsch
Mohammed Bircharef
Jonathan Black
Christopher Bodell
Hernan Cadavid
Marcos Carrillo Perera
Dr Richard Caruso
John Casey
Edith Champagne
Joseph Chang
Michael Chen
Dr Szu-Ting Chen
Eun Chung
John Chung Chung Wai
Douglas Cleary
Stelios Colocassides
Eleni Constantinou
Sean Culhane
Jose Dapena-Fernandez
Felipe De Gamboa
Enrique Diaz-Infante
Michael Dimopoulos
Helena Donohoe
Attila Emam

Peter Enti
Demetris Georgiades
Dr Paul Gollan
Susan Granger-Tyler
Beth Halpern
Dr Alexandra Heath
Unnar Hermannsson
Robert Holzbach
Azim Hussain
Dr Joaquin Ibanez
Mohamad Ichsan
Hiroyuki Imada
Dr Michael Ivens
David Jacks
William Jarrett Jr
Anita Jennings
Sanjeev Kalachand
Gauri Kasbekar-Shah
Martha Kavanaugh
Patrick Kennedy
Osman Khan
Rishi Khosla
Yong Kim
Dr Gary Klein
Caroline Knudsen
Djuro Kovacec
Kenneth Lai
Dr Terrence LaPier
Richard Lax
Michael Lee
Wilson Leung
Tun-Son Lin
Tommy Lin
Fiona MacDonald
Dr Hilary Macdonald-Carter
Nivine Maktabi
Azman Mohd Yusof
Jeevajothe Murugiah
Aruna Narain
Wei Ng
Nathan Ostertag
Anthony O'Sullivan
Michael Peterson
Sri Rahayu
Sheikh Rahman
Shuba Rao
Adam Raphael
Neil Reeder
Christoph Roescher
Annadis Rudolfsdottir
Audrey Sacco
Anshuman Saikia
Emily Sharko
Arun Shenai
Yunib Siddiqui
Anthony Simcic
Nikolaos Sofianos
Brenda South
Srđjan Stojanovic MSc
Toi Tan
Joon Leng Teoh
Rudiger Trost
Bruce Tuchman
Robert Van Schaik
Peter Van Strijthem
Raymond Chin Yoon Siong
Yau Yuen
Claudio Zucca



2000-2009

Martín Abadi
 Yahya Abdulla
 Katia Adamo
 James Afedo
 Mark Agius
 Rahul Agrawal
 Olufemi Agunbiade
 Stanley Agwuh
 Ciarán Ahern
 Chingiz Aliyev
 Rafael Alves De Almeida
 Andres Alonso
 Dr Stefan Altorfer
 Fernanda Andalaft
 Paige Andrews
 Pierre Antheaume
 Armando Armas Cuartin
 Markus Arnez Wegelius
 Thiago Auzier
 Ubong Awah
 Adel Baba-Aissa
 Andrea Barone
 Noemi Blasutta
 Eduardo Boccardo
 Lieven Brouwers
 Brett Bruen
 Lucas Carbonaro
 Maria Chiara Cattaneo
 Alberto Cervantes Rodriguez
 Igor Cesarec
 Amish Chadha
 Driss Charrier Rachidi
 Vikas Chawla
 Jinji Chen
 Zhen Chen
 Jonathan Cheng
 Dr Shiuh-Shen Chien
 Derek Choi
 Fengyu Chou
 Rosehanna Chowdhury
 Chien-Wei Chu
 Megan Cokely
 Moira Conway
 Andrea Cruz
 Dr Zoltan Csedo PhD
 Benjamin Dachis PhD
 Rabie Dagher
 Mark Daou
 Suparna Dasgupta Ghose
 Daniel De Castro Gomez
 Professor Jesus De Miguel
 Marios Demetriades
 Lukacs Dorfner
 Saloni Doshi
 Eleni Doundoulaki
 Calvin D'Souza
 Santiago Duran Hareau
 Zachariah Eccleston
 Sandra Eismann
 Aziz El Am
 Jose Escudero
 Zsófia Farkas
 Jui-Chi Feng
 Jose Figueroa
 Fabio Finazzer
 Jeff Fischer
 Agustin Flah

Henry Forelius
 Bence Gabor
 Connor Galvin
 Saoussan Ghandour
 Abhay Gohel
 Dr Sajjansinh Gohel
 Sefa Gohoho-Boatin
 Margo Goldman
 Eduardo Gorab Olivares
 Melissa Govender
 Giordana Grego Levy
 Arushi Gupta
 Sangwook Han
 Ernest Hanson
 Ari Helgason
 Rebeca Herrera
 Dr Bing Ho
 Kerrin Howard
 Yumi Inada
 Ayla Iqbal
 Jamil Jaffer
 Dr Levan Jugeli
 Salma Kabbaj
 Radhika Kak
 Madhav Kanchan
 Petar Karanakov
 Robin Ketrot
 Waleed Khalid
 Dr Kamleh Khatib PhD
 Dr George Khechinashvili PhD
 Marriam Khokhar
 Christine Kilfoil
 Michelle Kim
 Meelis Kitsing
 Tin Oi Ko
 Martine Konfortion
 Anastasia Kossov
 Renate Kouwenhoven
 Dr Andrea Kreideweiss
 Graunt Kruger
 Tzu Yang Kuo
 Alon Kuperman
 Minoh Kwon
 Anne-Fleur Labbe
 Asha Lad
 Diana Laipniece
 Nina Lange
 Victoria Lebed
 Shaun Lee
 Pamela Lee
 Sean Lee
 Cho-Li Lin
 Chia-Hao Liu
 Antonio Llaya
 Louis Loizou
 Diego Lopez
 Rhona Luthi
 Tuuli Makela
 Alankar Malviya
 Despina Manousos
 Alexandre Margot-Duclot
 Olivier Marty
 Shannon McCormick
 Sarah Mccue
 Jose Merino Arias
 Fongtien Miao
 Ankit Mody
 Maria Molina Aguayo
 Ignacio Morande
 Normand Morneau

Maria Movsichoff
 Karnvir Mundrey
 Andres Musalem
 Christoffer Mylde
 Gayashini Nanayakkara
 Dr Diego Navarra
 In-Leng Ng
 Hieu Nguyen
 Mathilde Nikkhou-O'Brien MSc
 Brett Noble
 Professor Masato Noda
 Levente Nyitrai
 Jonathan Orr
 Philipp Otdelnov
 Reeta Paakkinen
 Sunandini Pande
 Shriya Pant
 Susan Pape
 Kara Parke
 Sarah Pechan
 Scott Pedowitz
 Michael-John Pierce
 Dr Jens Poppen
 Laurent Potel
 Edward Price
 Sarah Quincy
 Luis Ramirez Quintanilla
 Hanmol Randhawa
 Maha Rehman
 Luis Rios
 Annabelle Rolland
 Yannick Roux
 Amanda Russo
 Thane Ryland
 Polina Sakalian
 Almir Salimov
 Eduardo Sanchez
 Anuj Sanghi
 Mauricio Santana
 Eliana Santanatoglia
 Ana Santos De Almeida Silva
 James Savage
 Niels Schindler
 Denis Shafranik
 Mansi Shah
 Usman Sheikh
 Jaehoon Shin
 Elena Sisti
 Natalie Skacelova
 Napawong Snidvongs
 Ali Sohail
 Natalia Sturba Cabrera MSc
 Guillermo Suarez Sebastian
 Rubayat Tanvir
 Hamza Tber
 Vassilka Tchifilionova
 Christian Thiel
 Dr Till Toemmel
 Paulo Tovar
 Manasi Tripathi
 Jyoti Upadhyay
 Sallie Van Tassel
 Adrian Villanueva-Delgado
 Maria Rita Villela
 Yen Vu
 Eric Wan Kee Cheung
 George Wetz
 Anne Wingate
 Roxana Wring
 Xiameng Xu

Boris Yaryshevskiy
 Arezou Yavarianfar
 Dr Andrew Zammit
 Tarek Zebian
 Yihan Zhu
 Zhu Zhu
 Athanasios Zois

2010-present

Veridiana Abdo Nakad
 Priscilla Abishegam
 Aneesh Acharya
 Seyed Adeli
 Waqas Adenwala
 Kailasnath Adhikari
 Rodrigo Aguilar
 Jasmine Ahn
 Abdellatif Ait Boumhaout
 Huda Al Najjar
 Victor Alexiev
 Muhammad Saad Ali
 Caitlin Allan
 Nana Amankwah
 Dayu Amurwanti
 Ioannis Andreadis MSc (Lond)
 Diarmuid Angland
 Albert Arcarons
 Suhani Arora
 Christian Bahoo
 Athanasios Balasopoulos
 Virgil John Banta
 Jorge Baron
 Marguerite Beau
 Vusal Behbudov
 Salim Benhachmi
 Håvard Berge
 Amrita Bhatia Bubber
 Eric Biguyi
 Shan-Yi Bong
 Daniel Botero Vargas
 Myriam Bouchentouf
 Lisa Brandt
 Gabriela Brtkova
 Pattraporn Burawattana
 Bernard Butare
 Christina Cail
 Cristobal Caorsi
 James Carson
 Javier Castrillon
 Lucia Catalan
 Carmen Chan
 Sharanya Chandran
 Yu Chang
 Shakira Chanrai
 Laetitia Chatain
 Kalai Choi
 Chor Chong
 Neha Choudhary
 Ahnaf Chowdhury
 Alina Cirstescu
 Alexandra Cordato
 Rayna Coulson
 Kerrylynn Daly
 Kenneth Damien
 Mikaela D'angelo
 Delphine Dard
 Charles Dixon
 Jayson Dong



Roxana Dumitrache	Shorena Kalandarishvili	Morales Alvarado	Sandesh Sharanappa
Ayoub Eddaira	Wei-Lin Kan	Ronald Edward Mukasa	Fiona Sharkey
Loris Eichenberger	Aydan Karimli	Tiia Mustonen	Longyan Shen
Alexandra Eichenblatt	Alexandros Karydis-Karandreas	Ratidzo Mutizwa	Qirong Song
Robert Eisenberg	Stefan Kecojevic	Samuel Myers	Maria Sotiriou
Joseph Elborn	Agha Khan	Hao Na	Patrick Stahel
Turan Eldarova	Patrick Kilmartin	Andria Nadiradze	Che-Jui Sung
Yolanthika Ellepola	Kooyeon Kim	Rhonah Nanyonjo	Nivedita Sunil
Ann Marie Eu	Tae-Woo Kim	Mariana Naranjo Arango	Beenisch Tahir
Lorraine Eyison	Aaron Timothy Kirunda	Carlos Nascimento	Elaine Tan
Fatemeh Fannizadeh	Brice Kitio Dschassi	Mrs Samiya Naseer	Wai Teh
Dr Gabriel Farfan-Mares	Mayra Andrea Kohler Rodriguez	MSC (LOND)	Thomas Terdjman
Maurice Fermont	Arthur Kong	Daniel Ndung'u	Simon Thang
Angelica Figueroa Valenzuela	Ioannis Korkovelos	Yen Han Ng	Nikolaos Theodoropoulos
Seidu Foster	Adrian Kronauer MSc (Lond)	Nana Nyanin	Esteban Tinoco De Rubira
David Fosu	Predrag Krupez	Emese Nyitrai	Christian Tooley
Alison Frame	Victoire Krzentowski	Donnas Ojok	Janos Toth
Miklós Gaál	Mikheil Kukava	Wei Shen Ong	Mayuko Totsuka
Rajdeep Gahir	Victoria Kulikovski	Stephanie Opdam	Rasha Touqan
Scott Gammon	Queenie Chia Hua Kuo	Helixs Oroma	Naniko Tsiklauri
Jin Zhi Gan	Matthias Kupperts	Dr Oscar Palma	Bryan Tsuyuki Tomlinson
Ge Gao	Maria Ariadne Kyriadi	Adam Paturej	Defne Tuncer
Josephine Gardiner	Manoj Ladha	Delphine Pedeboy	Emilio Uzcategui Jimenez
Nathan Gardner	Simon Latham	Jean-Laurent Pelissier	Szabolcs Vagvolgyi
Manuel Geggus	Alexis Lavergne	Patricia Pella Fernandez	Anastasia Vaki
Wen Ting Geok	Rachel Lee	Adeline Pelletier	Rocio Del Pilar Veloza Cantillo
Rory Geraghty	Eleana Legree	Juan Peredo Bernal	Johann-Paul Wallot
Tapinder Ghuman	Antti Leino	Roberto Perez	Xinting Wang
Patrick Girasole	Ivonne Leon Hernandez	Jaime Perez Crespo	Ke Wang
Mariella Goebel	Myra Leung	Brandon Perlow	Zhongjie Wang
Andres Gomez G	Raphael Levy	Aleksandra Petersone	Mark Weng
Esteban Gonzalez Serna	Haowei Li	Phuong Thao Phung	Rebecca Wilkinson
Yme Gorter	Qian Liang	Raghav Poddar	Natalie Byrd Wilmer
Benjamin Grabiner	Yi-Ting Lien	Lydia Pointner	Dr Muhammad Wirajuda
Jonathan Grant	Curt Lindereth	Bradley Poku-Amankwah	Yin Wong
Benjamin Grant	Zeyuan Liu	Karin Poldas	Chen Xu
Donald Gribbons	Yanhan Liu	Lura Pollozhani	Han Yang
Lorena Guarnizo Bonilla	Andrea Lizama Alvarado	Vandad Pourbahrani	So Yang
Jia Guo	Michael Lok	Jing Tao Qin	Wern Yap
Barbora Guobyte	Rui Ma	Orsolya Raczova	Bahar Yarmohammad
Yasamin Haghighat	Kirsty Macdonald	Vera Radeva	Ms Shokooh Yazdani
Di Hai	Lauren Maffeo	Teresa Raigada Fernández	Li Yi
Shannon Hale	Matias Makela	Sneh Rajbhandari	Prakritee Yonzon
Dominique Hamel	Maya Makkawi	Magali Pilar Ramos Jarrin	Ki Yuen
Deeba Farah Haque	Mahammad Mamishzada	Omar Rangel Martinez	Michal Zaltzman
Karl Hefe	Lorenzo Marchese	Natasha Ratanshi	Junyuan Zeng
Kevin Hempstead	Juan Marin	Sarah Reid	Patrice Zhang
Andrew Hendrix	Máté Martin	Rodrigo Reyes Muguerza	Jinghan Zhang
Andreas Hermann	Michael Martins	Martha Rocha Gonzalez	Duoyi Zhao
Robert Hewitt	Duarte Martins	Ana Rodriguez Romero	Jingwen Zhou
Jacob Hipps	Martin Mathus Gomez Sandoval	Karen Rodriguez Zapata	Han Zhou
Jane Ho	Jerry Matthews	Martí Rovira Sopeña	Claudia Ziegfeld
Haixiao Hong	Emma Mchugh	Carolina Rudnick	Tom Zigrand
Juanjuan Huang	Paulina Medel	Marc Sabadi	Jessy Alejandra Zumaeta
Sarah Hunter	Nandini Mehra	Aditi Sahni	Valenzuela
Mckenzie Hyde	Kabir Mehta	Hayah Saleem	Fabian Zwiener
Marion Inguan	Gerardo Mendoza Capetillo	Paul Sammon	
Mehreen Izhar	Aleksandra-Ani Meskhishvi	Nikhil Sangani	
Veronika Janeckova	Mandeep Metharu	Romina Savini	
Houssam Jedda	Ryan Migeed	Maxwell Scott	
Karen Jemmison	Alexander Mignone	Ria Sen	
Lubomila Jordanova	Mathew Milner	Mia Severino	
Yuliya Jurisch	Ava Mirfendereski	Iran Seyed-Raeisy	
Dr Vishnu Juwono	Damian Montes Piedrahita	Neil Shah	
Theodoros Kalampokis	Javiera Ignacia	Kaitlyn Jane Shannon	

Supporter Volunteers

Ruslan Aubakirov
Lei Chen
Dr Veerle Heyvaert
LLM (Harv) PhD
Jerome Smith

Please be assured we value every contribution: while every effort is made to ensure the veracity of this volunteer recognition roll, there may be instances in which names have been omitted inadvertently or listed incorrectly. A digital version of the Supporter Roll 2017/18 will be made available and can feature corrections. If you have any questions or comments, please contact alumni@lse.ac.uk.



Our donors, friends and supporters

LSE is privileged to enjoy the support of individuals and organisations who invest generously in the future of the School, through bespoke philanthropy and strategic partnerships. Your support towards our institutional priorities and collaboration with our strategic projects is integral to our wider mission.

This roll recognises donors and supporters who made new commitments or gifts, and our institutional partners who supported new initiatives and working with LSE directly, or to affiliated entities worldwide, between 1 August 2017 and 31 July 2018 (hereafter “2017/18”).

Donors and supporters

Abdalla Foundation
Alumni and Friends of
the LSE in the USA
James Anderson
Dr Nina Ansary
Raph Appadoo
Peter Baldwin
David and Kitty Beecken
Adrian Cohen
William Duhamel
Tim and Alison Rankin Frost
Dr Harold E. Glass
D. J. Goldstone CBE
Gerald Gray
Jules and Sue Green
Henry E & Consuelo S
Wenger Fdn., Inc
Laurence E Hirsch
Dr Jakob Horder
Kadas Family Charitable
Foundation
Veronika Kapustina

Jack Kerr
Arvind Khattar
Professor Nicola Lacey CBE
Dato Lee Hau Hian
Leong Chao Seong
MacQuitty Charitable Foundation
Craig McCrohon
Guy and Rose Monson
Charitable Trust
Ana Morales
James B Nicholson
Richard Oram
Ian Osborne
Shanker Patel and Rachna Dewan
Ryan Prince
Quah Chek Tin
Rose Castle Foundation
Parul Scampion
The Virginia and L.E.
Simmons Foundation
June Simpson
Brian Smith
The E C Sosnow Charitable Trust
Dr Judith H Stoikov

Martin Stott
Herr Manuel Stotz
Dr Pavel Teplukhin
Dr Michael T Thomas
Jacky Wong
Keith Young MBE and
Melanie Young

Three anonymous donors

Sarah Scaife Foundation
The Sutton Trust
Swedish Ministry for
Foreign Affairs
Trust for London
UniCredit & Universities
Wolfson Foundation
World Resources Institute
WP Coombes Charitable Trust

Institutional Partners

AKO Foundation
The John Armitage
Charitable Trust
AXA Research Fund
Beacon Equity Trust
Bloomberg Philanthropies
Boston Consulting Group
CAF Development Bank
of Latin America
Cañada Blanch Foundation
Chicago Community Trust
The Commonwealth Fund
Dr. Frederik Paulsen Foundation
Ede and Ravenscroft
Ernst & Young
Fondazione Sviluppo
e Crescita - CRT
Friends Provident Foundation
Bill & Melinda Gates Foundation
Alfred Herrhausen Gesellschaft,
The International Forum
of Deutsche Bank
Hogan Lovells International LLP
Institute for Strategic Dialogue
Institute of International Education
Inter-American Development Bank
Kirkland & Ellis
Korea Foundation
Lomans Trust and Peter Walker
Noble Foundation
Open Society Foundations
Robert W McComb Trust
The Joseph Rowntree
Charitable Trust
Santander Universities UK



Legacy giving

LSE is indebted to alumni and friends who followed in the footsteps of Henry Hunt Hutchinson and took the necessary steps to include provision of a charitable gift in their Will.

Realised Bequests in 2017/18

We are grateful for the generous gifts received from the estates of the following alumni and friends:

The Late Sheila Aldworth
The Late Patricia Cook
The Late John Ying Wah Gibson
The Late Alan Gillies
The Late Basil Henson
The Late Professor Geoffrey Maynard
The Late Fredrik Tackholm
The Late Margaret Thomas
The Late Frederick Tuckman OBE
The Late Dorothy Walters
The Late John Ward

Legacy Circle

Thank you to the following alumni and friends who have formally joined our legacy supporter community in 2017/18 by including provision for LSE in their Will:

Michael James
Anna Pellanda
Michael Sharman

One anonymous donor



LSE greatly appreciates the transformative impact individuals, foundations and organisations have on strategic School priorities. While every effort is made to ensure the veracity of our supporter rolls, there may be instances in which names have been omitted inadvertently or listed incorrectly. If you have any questions or comments, please contact advancement@lse.ac.uk. A digital version of the Supporter Roll 2017/18 will be made available and can feature corrections/amendments.



Regular giving

For the third year in succession, alumni and friends around the world helped the regular giving programme to pass £1 million in unrestricted funds for School priorities. Thank you – your gifts supported a range of projects and initiatives across LSE that provide scholarships, improve the student experience, enhance teaching and promote research excellence.

Annual unrestricted gifts for 2017/18 included those made through the regular giving programme, the American Fund for LSE, and the German Friends of LSE. As well as those listed in the following pages, we are grateful to 224 anonymous donors for their support.

LSE 1895 Society

1895 Society

The LSE 1895 Society, named in tribute to the founders of the School, recognises supporters making annual gifts of £1,000 or more within a year during 2017/18.

Webb Circle

The Webb Circle recognises supporters who made unrestricted or special gifts of £10,000 or more to the School.



Adele Biss
Michael Culhane
Roger Davies
Sir Evelyn de Rothschild
Stewart Feldman
Conrad Foa
Arnold Kammerling MBE
Amanda Kazanjian-Culhane
Harry Krensky
Martin Lewis OBE
Margaret Mills

Michael Modiano
Peter Oppenheimer
Harry Samuel
Douglas Scrivner
Lata Shah
Barbara Trebbi
Simone Verri
Meechun Wong (In memory
of John Ying Wah Gibson)
Boh Yap



Wallas Circle



The Wallas Circle recognises supporters who made unrestricted gifts of £5,000 to £9,999 to the School.

Thomas Allen
Nicholas Archer
Ian Bell
Anne Bingaman
David Bizer
Dr Peter Cirenza
Steven Cohen
Kimberly Conner
Tommaso Crackett
Kurt Ersoy
Dan Fitz
Rita Golden
Jeffrey Golden
Heidi Greiling

Nicholas Groombridge
David Heleniak
Sikander Ilyas
J Patrick Michaels Jr
The Late G Modiano
Eryl Morris
Roger Mountford
Dr Jonathan Oppenheimer
Professor Peter Reddaway
Rita Stephen MBE
Dr Michael Thomas
Bruce Tuchman
Ching Tung
David Wah





Shaw Circle

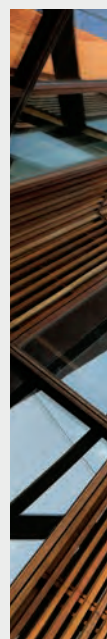


The Shaw Circle recognises supporters who made unrestricted gifts of £1,000 to £4,999 to the School.

Helen Abbott
Neville Abraham CBE
Melis Acuner
Christian Ahlborn
Aneek Ahmed
Alexandros Aldous
Adil Alshinbayev
Edgar Ancona
Nora Ancona
Felipe Arisa Yamada
Dr Henry Armour
Yezdaan Baber
Richard Babson
Ahmed Balamesh
Professor Nicholas Barr
Dr Peter Barschdorff
Gabriella Barschdorff
John Barter
Thomas Batten
Virginia Beardshaw CBE
Stefan Benedetti
Scott Bowie
Robert Burka
Piers Butler
Mary Campbell
Olympio Carvalho e Silva
John Casey
Mustafa Celiktemur
Edward Chan
Helen Chang
Fook Chew
Tse-Wei Choe
Roland Chow
Didem Ciner
Mary Clark
Harry Culham
Jonathan Damsgaard
Ian Davison
Dr Jorg Decressin
Stephanie Dencik
Krysha Derbyshire
Professor Susan Dev OBE
Dr Otto Doering III
Dr Ebba Dohlman
Robert Douglas
Dr Christine Downton

Frank Earwaker
Richard East
Erik David Ehnimb
Alan Elias
James Elliott
Dan Elliott
Guy Elliott
Davide Erro
Diana Eyre
Kenneth Faircloth OBE
Yi Fan (In memory of the
Late Mayling Birney)
Eric Fastiff
Breht Feigh
Rodrigo Fiaes
Karen Fitzner
Rick Foker
Mario Francescotti
Valerie Francescotti
Paraskevi Galani
Amir Gehl
Lord Anthony Giddens
Adam Glinsman
Richard Goeltz
Gonca Gürsoy Artunkal
David Hand
Ian Hart
Motonobu Hasegawa
Laurent Haziza
Richard Heckinger
Deborah Heng Siddiqi
Cherine Herrmann
Dr Jens Hilscher
Sze Wai Ho
Andrew Hochhauser QC
Dr Ulrike Hoffmann-Burchardi
Keith Hollands
Christine Holroyd
Patricia Houston
Jingmin Hu
Jonathan Hung
Adolf Ihde
Professor Duncan Ivison
Professor The Rt Hon Sir
Robin Jacob QC
Alexander Jan
Kalika Jayasekera

Joanna Johnston
Raed Kanaan
Dr Kurt Karl
Colleen Keck
Dr Louise Keely
Ian Kelson
Thomas Kern
Keng Koay
Nina Kostic
Jonathan Kwan
Raymond Kwok
Ranjit Lakhanpal
Jonathan Lapin
Mary Lee
Dato Hau Lee
David Leeke
Catherine Lewis La Torre
Kelvin Liao
Dr Susan Liautaud
Sir Michael Lickiss
Albert Lilienfeld
Bo Lindroth
Lady Jane Lloyd of Berwick MBE
Frank Lochan
Michael Longthorne
Dr Ingo Luge
Keith Mackrell
Professor Richard Macve
Professor Robin Mansell
Pedro Mariani
John McKay
Anna Mcleod Mckay
Patrick Mears OBE
Siddharth Mehta
Ralph Mendelson
Jeremy Metcalfe
Robert Miall
Dr Kevin Michaels
David Milne IV
Robert Minikin
Robert Mitchell
Ashley Mitchell
Elizabeth Mitchell
Ian Morrison
Sarah Morrison
Michael Moszynski





Dr Cornelia Navari
Richard Nesbitt
James Nicol
Philip Niem
Professor Michael Otsuka
Dr Sarah Owen-Vandersluis
Roger Paice
Helen Pang
George Patterson
Dr John Pattison
Michael Pearson
Gary Perlin
Michael Peterson
Ralf Preusser
Dr Christopher Probyn
Satish Pulle
Harry Reasoner Esq
Patrizia Roehm
Kenneth Rotman
Catherine Sanger
Steven Schramm
Emily Sharko
Michael Sheren
Lutfey Siddiqi
Gauri Sikri Lakhanpal

Richard Simmons CBE
Bedi Singh
Brian Smith
Dr Abdulkarim Somjee
Laurence Sorkin
Joan Sorkin
Sir John Sparrow
Mark Stewart
Wolfgang Streitz
Dr John Strudwick
Alistair Summers
Rebecca Susser
Philip Susser
Timothy Sykes
Henry Tai
Nerine Tan
See Chim Tang
Professor Irene Tinker
Samuel Tob
Mirella Tronco
Lady Elizabeth Vallance
Robert Vandersluis
Keith Wade
Dr Richard Walker
James Wallace

Aaron Walters
Tira Wannamethee
The Late John Ward
Ian Wentworth
Dr Urs Wickihalder
Dr Dirk Willer
Roland Williams
Robert Williams
Thien Wong
Bryan Yip
Guoer Zhang





Donor roll

Thank you to our generous alumni and friends whose annual unrestricted gifts to the School in 2017/18 helped to strengthen LSE. Alumni supporters are listed by decade of first graduation.

1940-49

Sheila Bennett
Lawrence Berman
Peter Block
Eleanor Bridgland
The Late Pauline Clarke
John Crowe
Garrettson Dulin Jr
Lois Goldthorpe
Professor Norman Graves
Wilfred Hockfield
Barbara Hutton
Joan Kelley
Robert Levinson
Dr Esther Marine
Edward Masters
Joyce Nalpanis
Lieutenant Col Clarence Pardoe
Prudence Peskett OBE
John Pike CBE
Professor Antony Taylor
Jean Wickham
Margaret Williams
Dr Enid Wistrich
Jean Yeomans

Brian Binns
Frank Blumenfeld
Professor Jay Blumler
Ronald Brandon
Michael Brecknell
Cyril Breslauer
Pamela Bright
Barbara Brilliant
Anita Brocklesby
Marjorie Brooks
John Brougham
Hilde Browning
Elizabeth Bryan
Robert Budd
Cornelius Cacho
William Capstick
Professor Emeritus Richard Cardozo
Tse Chang
Professor Stanley Chapman
Professor John Chelsom
Philip Clancy
John Clark
Elizabeth Cleaver
The Late Harold Cohen
Douglas Cracknell
Elizabeth Cripps
Margaret Crompton
Harry Culham
Anthony Cunningham
Kevin Daly
Dr Gordon Daniels
Frederick David
Reverend Dr Peter Davie
Professor Henry Davies
David Davis
Ronald Davis
Ian Davison
Derek Day
Dr Emanuel de Kadt
The Late Matilde De Silva
David Denny
John Dixon
Maysel Dontoh
Ismene Durand
Frank Earwaker
Harland Eastman

Robin Ellis
Gillian Evans
Kenneth Faircloth OBE
Alan Fawcitt
Trevor Fenemore-Jones
Alan Flint
John Flower
Anthony Foster
Professor Robin Fox
Amadeo Francis
Professor Michael Fry
Reverend Bernard Gales
Josephine Gately
Dr Charles Gilbert
Professor Marianne Githens
Peter Goate
Michael Godfrey
Stanley Goodman
Lionel Gordon
Dr Michael Graham
Beryl Grant
Malcolm Greenwood
Elizabeth Gregory
Revel Guest-Albert OBE
Richard Hall
Sheila Hallas MBE
David Hando BEM
Brian Hanks
Prudence Harris Watson
Kenneth Harry
Claudia Harry
Robert Hart
Ronald Henderson
John Herring
Anthony Herron
Frederick Hodge
Ian Holden
Christine Holroyd
Margaret Hooper
Catherine Hopson
Peter Howarth
John Hulley
Brian Humphreys
James Hunt
Lady Iro Hunt
Herbert Isaacson
Dr Charles Jackson
Roy Jones
Sir Edwin Jowitt
Lord Frank Judd of Portsea
Dr Muhammad Kamlin
Arnold Kammerling MBE
Donald King
Judith Klein

Dr Thomas Klein
Ralph Land CBE
Donald Last
Sylvia Lewis
Sir Michael Lickiss
Harold Lievesley
Patricia Lloyd-Green
Euan Lumsden
Madeline Macdonald
Keith Mackrell
Michael Madden
Dr Federico Magnifico
Ian Martin
June Martin
David McAuley
Peter McNeal
Patricia Mellor
Peter Mitchell
Deborah Moller
Elspeth Morley
Angela Morris
Dr Edward Neufeld
Gabriel Newfield
Professor Gerald Nordquist
Christopher Oates
Karla O'Brien
June O'Brien
Helen Paling
Anne Passmore
Richard Pengelly
Professor Joseph Perez
Raymond Phipps
Wilfrid Pickard
Professor Robert Pike
Rosemary Polack
Dr Philip Porter
John Praksta
Jon Rees
Martin Reiss
Betty Richardson
Karen Riedl
Brian Rodmell
Mary Rowe
Philip Sadler
Stephen Schneider
Navinchandra Shah
Michael Sharman
Andre Sharon
Dr Jill Sheppard
Khursheed Siddiqui
David Slade
John Smith
Dr Moehamad Soerakoesoemah
Dr Abdulkarim Somjee

1950-59

Leo Abeles
Richard Alexander
Dennis Andrew
Rosemary Andrew
Dr Demetrios Argyriades
Thomas Arkhurst
Mary Arnold
Codrington Ball
Gillian Ballance
Professor Michael Banton CMG
Diana Barker
Joseph Barling
Frederick Barnes
John Barter
Alec Batanero
Sir Anthony Battishill GCB
Roger Beaumont
Deborah Beck
Anita Bernstein

Leo Abeles
Richard Alexander
Dennis Andrew
Rosemary Andrew
Dr Demetrios Argyriades
Thomas Arkhurst
Mary Arnold
Codrington Ball
Gillian Ballance
Professor Michael Banton CMG
Diana Barker
Joseph Barling
Frederick Barnes
John Barter
Alec Batanero
Sir Anthony Battishill GCB
Roger Beaumont
Deborah Beck
Anita Bernstein



Sir John Sparrow
 Professor Theodore St Antoine
 Dr Günter Stahl
 Rita Stephen MBE
 Dr Jean Stirk
 Professor Bradford Stone
 Frank Stoner
 Robert Symonds
 Geoffrey Taylor
 Michael Teitz
 Michael Thomas CMG QC
 Professor Irene Tinker
 Joanna Trijbits-Puszet
 Kyriacos Tsioupras
 Fraser Tuddenham
 William Tyldesley
 Sammy Wainwright CBE
 Derek Walker OBE
 The Late Philip Wallick
 The Late John Ward
 Cerdic Warrillow
 Brian Watkins
 Barbara Watson
 Dr Janet Waymark
 Alan Weston
 Christopher Westwick
 Raymond White
 Renee Willgress
 Roland Williams
 David Williams
 Dr Gethin Williams
 Val Williams
 Robert Williams
 Alexander Wilson
 William Wolff
 Eric Woods
 Susan Wright
 Enid Wright

1960-69

Neville Abraham CBE
 Robert Adams
 Elizabeth Adlington
 Donald Adlington
 James Alban-Davies
 David Alderman
 Dr Arthur Alexander
 Malcolm Allbutt
 Thomas Allen
 David Anderson
 Judge David Anderson
 Nathan Apfel
 Professor James Armstrong
 His Hon Judge Graham Arran
 Elizabeth Atkins
 Philip Austin-Crowe
 Eleanor Baber
 Alan Backhouse
 John Bailes
 Laurence Baker
 Ann Baker
 Ahmed Balamesh
 David Barnes

Allan Barnes
 Professor Malcolm Barnett
 Professor Nicholas Barr
 Peter Bartram
 Monica Baynes
 Roderic Beale
 Commander Peter Beazley OBE
 Joyce Bellamy MBE
 Wolf-Dieter Berkholz
 Professor Ramachandran Bharath
 Anne Bingaman
 David Bird
 Margaret Bishop
 Dr John Black
 Doris Mary Blacka
 Dr Sheila Blair
 Harry Blaney III
 Professor Michael Bordo
 Allan Bortel
 Gabor Brachna
 Henry Bradford
 Dennis Bradley
 Sheila Bradley
 Professor Edwin Braid QC
 Dr William Brandon
 Richard Braun
 Dr Gillian Bridge
 Anthony Bridges
 Professor Archibald Brown CMG
 Malcolm Brown OBE
 Professor Roger Buckley
 Oliver Bull
 Robert Burka
 Mollie Burke
 Adolphine Burkens
 John Butterworth
 Shirley Campbell
 Celia Capstick
 Zenon Carnapas
 Roger Carroll
 Dr Lionel Carter
 Dr Herman Chernoff
 Roland Chow
 Mark Clark
 Howard Clarke
 Monica Cleasby
 D Collins
 Patricia Collins
 John Connor
 Dr Hugh Conway
 Allan Cook CBE
 Dr Anthony Cook
 Dr Stephen Cooney
 John Cornhill
 Ann Cotterrell
 William Coulter
 Robert Coursey
 John Cragg
 Dr John Crean
 Ronald Creed
 Karen Cross
 Ian Cubbin
 Roger Davies
 David Davies

Margaret Davies
 Professor John Davies
 Jack Davis
 Robert Davis
 Richard De Zoysa
 Patrick Deluhery
 Dr Ann Denis
 Professor Susan Dev OBE
 Dr Otto Doering III
 Professor Emeritus Abraham Doron
 Professor David Downes
 Dr Christine Downton
 Dr David Driscoll
 Andrew Duguid
 Donald Dunning
 Imogen Ecclestone
 Geoffrey Edge
 Robert Edmonds
 Professor Nicholas Edsall
 Janet Elliott
 James Elliott
 Francis Ellis
 Professor Mary Evans
 John Evans
 Diana Eyre
 Ann Fausset
 John Feane
 Dr Edwin Feulner Jr
 Conrad Foa
 Maureen Follett
 Anne Forbes
 Judith Fox
 Michael Fox
 Anthony Frayne
 Thomas Freeman OBE
 Franklin Gannon
 Barry Garfield
 David Gater
 Michael Gates
 Panos Ghalanos
 Animesh Ghoshal
 Lord Anthony Giddens
 Professor Elisabeth Gidengil
 Richard Goeltz
 Lindsay Goodman
 Professor John Goodman CBE
 Hilda Gould
 Malcolm Gould
 Professor William Gould IV
 John Gower
 Robert Grant
 Margaret Griffiths
 Hon Michael Guhin
 Dr Sandra Hadler
 Stephen Hall
 Stella Hall
 John Halstead
 James Hamilton
 Jack Harmsworth
 Beresford Harrison
 Howard Haslam OBE
 Dr Frances Healy
 David Heleniak

Georges Helminger
 Dan Hemmings
 Dr Dale Henderson
 Philip Hepworth
 Derek Hill
 John Hodgson
 Eileen Hoffman
 Bruce Hoffman
 Keith Hollands
 Judge Dallas Holmes
 Roger Housechild
 Patricia Houston
 Ann Howard
 Ronald Howlett
 Reverend Dr Peter Howson
 Peter Hulme
 Ambassador Robert Hunter
 Dr Ann Imlah Schneider
 Peter Jackson
 Kenneth Jackson
 Professor The Rt Hon Sir Robin Jacob QC
 Leon Jacobson
 Dorothy Jameson
 Professor Martin Jay
 Jonathan Jessup
 Bruce Jewell
 Earl John
 Anthony Johnson
 Dr Walford Johnson
 Andrew Johnson
 Dr Dale Johnson
 Dr Clive Jolliffe
 Professor Peter Jones
 Swadesh Kalsi
 Richard Kelly
 The Late John Kendall
 Robert Kheel
 Professor Dr Hubert Kiesewetter
 Sandra Kincaid
 Jill Kingaby
 Roger Kirby
 Norman Klath
 Stanton Koppel
 Jennifer Kornfeld
 Thomas Krackiewicz
 Rosalind Lacey
 Dr Norton Lang
 Anne Lapping CBE
 Mary Lee
 Dr Alan Leech
 David Leeke
 Dr Roger Leigh
 John Leigh
 Robert Leitch
 Dr Hayne Leland
 Henry Lerner
 David Lescohier
 Dr Ilana Lescohier
 Dr Peter Leuner
 Dr David Levering Lewis
 Daniel Levine
 Professor Roy Lewis
 John Lewthwaite



Keith Lievesley Esq
Dr Michael Lineton
Lady Jane Lloyd of Berwick MBE
Frank Lochan
Bryan Long
Alfonso Lopez-Ibor Alino
Professor Allen Ludwig
Yvonne Lukey-Smith
Adelaide MacMurray-Cooper
Barbara Marcus
Sudha Maroo
Professor Warren Mason
Richard Matrenza
William Matthews
Maureen McCarthy
Dunbar McIntyre
Dr Charles McPherson
Jonathan Menes
William Meserve
J Patrick Michaels Jr
Dr Eugene Mihaly
Gene Milgram
David Milne IV
Jeffrey Missman CPA
Robert Mitchell
Ashley Mitchell
Dr Muriel Mitcheson Brown
Chief Anthony Mogboh
John Montgomery
Brian Moore
Ivor Morgan
Eryl Morris
Isabel Morrison
Ian Morrison
Patrick Moscaritolo
Gillian Mottram
Professor Nicos Mouzelis
Rakhi Mukerji
Jean Murdoch MBE
Philip Murphy
Janice Murray
Mark Nackman
Yoshimitsu Nakamura
Dr Cornelia Navari
Dr Adrian Noad
John Ockenden
Dr Brian O'Connor
Ann O'Kelly
Dr Terry Olson
Paul Olson
Henry Omotoso
Heinz Opelz
Professor John Ord
Andrew Oxley
Cecil Oyediran
Theocharis Papamargaris
Geoffrey Park
Councillor John Parker
Edward Parker
Ronald Paterson
George Patterson
David Pearce
David Pearce

Robert Pedlingham
Thomas Peebles
Margaret Pegg
Professor Anna Pellanda Custoya
Muriel Pepper
Stephen Phillips
Dr Thomas Pickles
Lady Veronica Piercy
Klaus Pohlmann
Richard Poplack
Joshua Powers Jr
Janette Pratt
Kenneth Ravenscroft
Edward Razzell
Harry Reasoner Esq
Professor Peter Reddaway
Anita Regal
Margrit Reynolds-Herbener
Steven Riskin
June Road
Jean Robertson-Molloy
Professor Paul Rock
Michael Ross
Rosemary Ross
Phylip Rosser
Peter Rowlands
Jay Rubenstein
John Salkeld
Ivor Samson
Donald Samuels
Paul Samuels
Dr Harald Sandstrom
Roger Sansom
Victor Schoenbach
Ernest Schusky
Ian Scott
Janet Scott
Dennis Sellwood
Dr Alexander Shakow
Donald Shell
Gail Sheridan
William Sheward
Alan Shove
Richard Simmons CBE
Raghu Bans Singh
Professor Leslie Sklair
Professor Myron Slovin
Professor Clive Smee
Ronald Smith
James Smith
Judith Smith
Brian Smith
Peter Smith
Keith Smith
Laurence Solomons
Dorab Sopariwala
Susan Sorensen
Laurence Sorkin
Joan Sorkin
Jonathan Sperling
Michael Spiller
M Spitzer Jr
John Stanley



Charles Steedman
 Dr John Stein
 Derek Stevens
 Philip Strasburg
 Dr Cedric Suzman
 Anthony Swabe
 Robert Swift
 See Chim Tang
 Dr Philip Tasch
 Richard Tatlow
 Minto Thapa
 Jim Thomas
 Dr Tony Thorndike
 Alan Titchener
 Professor Michael Tolsdorf
 Michael Touff
 Roy Trinder
 Peter Trooboff
 Dr Frank Trumbower
 Dr Iacovos Tsalicoglou
 Nigel Turner
 Dr Roger Upson
 Lady Elizabeth Vallance
 Stephen van Hagen
 Dr Ludwig Volz
 Paul Wailen
 David Wailen
 James Wallace
 Professor Sandra Wallman
 Michael Walls
 Sandra Walmsley
 Dr Sudhir Wanmali
 Clare Warne
 The Hon Matthew Watson
 Peter Waymark
 Mollie Weatheritt
 Dr Bernard Weinstein
 Dr Ivan Weir
 Dr Sherrill Wells
 Ian Wentworth
 Christopher West
 Michael Weston
 Thomas Whipple
 John Whitton
 Dr John Whyman
 Patricia Wilson
 Alfred Wilson
 Valerie Wise
 Bruce Wood
 John Wood-Collins
 Antony Wool
 Elizabeth Worth
 Margaret Wright
 Ronald Wright
 Noel Yarger
 Alan Yeats
 Donald Young
 Kenneth Yule
 Frank Yurasko

1970-79

Helen Abbott
 Elliott Abrams
 Julie Agard
 Helmut Ahlfeld
 George Alexakis
 Steven Allen
 The Hon Judge Thomas Ammons III
 Edgar Ancona
 Nora Ancona
 Anne Apgar
 Nicholas Archer
 Dr Josephine Armistead
 Dr Henry Armour
 Franklin Aronoff
 John Aspinall
 John Attfield
 Michael Azefor
 Honourable Frank Barakett
 Richard Barker
 Josephine Barry-Hicks
 Professor Sir Charles Bean
 Maurice Beard
 Virginia Beardshaw CBE
 Pamela Beck
 David Bell
 Professor Janice Bellace
 Jana Bennett OBE
 Thomas Bever
 Kenneth Bialo
 Professor Patrizio Bianchi
 Daphne Bichard
 Kathryn Bieber
 Peter Biersteker
 Doreen Binks
 Stanley Black
 Robert Bluett
 Maureen Boerma
 Paul Boothroyd
 Caroline Bossowska
 Howard Brabrook
 Bruce Brafman
 Yeang Eng Braun
 Dr Joel Brenner
 Robin Broadway
 Roberta Brockman
 John Broughton
 Winthrop Brown
 Janet Bruner
 T Burns
 Gillian Butler
 Piers Butler
 Graham Cadman
 Dr John Calvert
 Bridget Campbell
 Peter Capel
 Dr John Carfora
 Ann Carmel
 Dr Stephen Carter
 Timothy Cary
 Margaret Casburn-Talbott

Dr Kee Chai
 Edward Chan
 Anthony Chapman
 Ikramullah Chaudhuri
 Kevin Chidgey
 Lynne Chilvers
 Nicholas Clack
 Dr Stephen Clarke
 Byde Clawson
 Nancy Cole
 Richard Collings
 Stephen Collins
 Dr Michael Collop
 Andrew Colman
 Wayne Comer
 The Late Michael Connah
 Dr Sandra Cook
 Judy Cooper
 Michael Cordingley
 Melanie Cousins
 Alison Cox
 Charles Crebbin
 Simon Croft
 Stephen Cuddy
 Philip Cutts
 Anthony Dacre
 Aziz Dajani
 Dr Robin Darton
 Peter Davies
 The Late Dr Karen Dawisha
 Dr Adhid Dawisha
 Mark Daymond
 Mungo Deans
 Daniel Dellegrotti
 Michael Denham
 Krysha Derbyshire
 David Devons
 Helen Dickson-Kalkhoven
 Terence Dignan
 Marcia DiJiosia
 Donald Dinan
 Sheree Dodd
 Dr Ebba Dohlmán
 Lawrence Douglas
 Robert Douglas
 Dr Edward Drayer
 Stephen Drayson
 Robert Dudiak
 Jennifer Dunlop
 Jeffrey Dvorkin
 Brian Eales
 John Easdale
 Alan Eastbury
 Dr Nicholas Eberstadt
 Dr Hali Edison
 Adam Eilenberg
 Rosemary Elias
 Alan Elias
 David Elliot OBE
 Pamela England
 John Evans
 Rosemary Farrer
 John Fearn

Howard Feather
 Stewart Feldman
 Francesco Filippi
 Martin Finke
 Kenneth Fisher
 Marlee Flaherty
 Scott Franklin
 John Freeman
 Hon Stuart Friedman
 Dr Beth Fuchs
 Franco Furno
 Gillian Fletcher
 Dilys Gardiner
 Marc Gardiner
 Colin Garlick
 Rita Gastaldi
 Dr Paul Gelpke
 Richard George
 Professor Christopher Gilbert
 The Late William Gillespie
 Steven Glick
 Jeffrey Golden
 Rita Golden
 William Goldman
 Clare Goldschmidt
 Ingrid Goldstrom
 Jordan Goodman
 Roderick Goodyer
 Andrew Gordon
 Dr Paul Gorecki
 Brian Granger
 Michael Green
 Vivienne Gross
 Ambassador Marc Grossman
 Dr Hope Gruber
 Pablo Halpern Montecino
 Dr Wellington Hamilton
 Barbara Hancock
 Anthony Hare
 David Harland
 Elizabeth Harris
 John Harris
 Ian Harrison
 Peter Harte
 Ian Hassett
 Mark Hawthorn
 Jonathan Head
 Professor Patsy Healey OBE
 Bjorn Helgesen
 Martin Hemming CB
 Michael Hetherington
 Judith Hicks
 Alun Hicks
 Andrew Hochhauser QC
 Fiona Hodgson
 Harry Hogg
 Dr Richard Holdsworth
 Richard Horder
 Dennis Horn
 Margaret Horwich
 Alan Houston
 Barbara Howard
 Ruth Hradsky



Frank Hudson	Professor Kent Matthews	Gary Perlin	Elizabeth Spiro
William F Hughes	Walter May	Penny Peterson	Robert Spjut
William J Hughes	Maureen McAlindon	Dorothy Pettitt	Katherine Stamatakis
Hans-Jurgen Hummel	Sandra McAvoy	Christopher Phillips	Christopher Starr
Stephen Hunt	Jane McComb	Dr Katherine Platt	Mark Stewart
Dr Shireen Hunter	Nina McKenna	Robert Podesta	Professor John Stewart
Rory Hussey	John McLees	Eduardo Posada	Richard Straus
Antoinette Iadarola	Ross McLeod	David Potter	Wolfgang Streitz
James Isbister	Professor Ronald McQuaid	Alexander Prentice	Dr John Strudwick
Sir Malcolm Jack KCB	Patrick Mears OBE	Kathleen Pring	Jeanne Symonds
Stephen Jacobson	Kenneth Mears	Jacqueline Radclyffe	William Tanis
Catherine James	Siddharth Mehta	Lois Radisch	Dr Curtis Tarnoff
Professor Emeritus David Jeremy	Penelope Mendelssohn	Raymond Randolph	Jeremy Taylor
Nizar Jetha	John Metzger	Peter Rapelye	Andrew Thomas
Sataporn Jinachitra	Philip Metzger	Ian Ray-Todd	David Thompson
James Johnson	Hughan Meyer	John Restorick	Robert Tilley
Graeme Jones	Ian Meyer	Joy Reynolds	Professor Nicholas Tilley OBE
Dr Bernhard Junemann	Robert Miall	Nicholas Richards	Joan Timmins
Cris Kako	Francine Miller	Sean Rickard	David Todd
Dr Jan Kalicki	Margaret Mills	Kenneth Riley	Stratios Tsitsopoulos
Dr Andrew Kane OBE	Judge David Milner	Gordon Ritchie	Professor Tetsuo Tsuzaki
Dr Kurt Karl	Anthony Milnes	Peter Robey	David Turetsky
Penelope Kegerreis	Alan Mitchel	Georges Robichon	Rolf Ulrich
Paul Kennedy	Brian Mitchell	Diane Rosen	Mathew Van Hook
Dr Patrick Kenniff	Elahe Mizani	Dr Steven Rosenbloom	Jane Verloop
Thomas Kern	Dr Wendi Momen MBE	Michael Rosin	Dr David Vincent
Ralph King	Dr Michael Montgomery	Kevin Ross	Dr David Voas
James Kleiner	Dr Charles More	F Rounthwaite	Norman Vogel
Dr Stanley Kober	Ian Morley	Dr James Rubenstein	Sorrel Vogel
Bruce Kopf	Dr Brian Morris	Professor Maria Ruiz	Thomas Volpe
Elaine Koss	Diane Morris	Dr Sheila Russell	Gregory Von Gehr
Peter Kuit	John Morrocco	Dr Randy Rydell	Dr Michael Wadsworth
Jonathan Lapin	Gordon Moskal	Arthur Rypinski	David Walker
James Lebo QC	Roger Mountford	David Sahr	Georgina Walker
Alastair Ledingham	Ian Murphy	Stephen Saltaire	Franklin Wallis
Dato Hau Lee	James Mutton OBE	Gregory Saltzman	Leslie Warburton
Angela LeFevre	Katherine Nairne	Stefka Samus	Professor Peter Watson
Dr Michael Lenhoff	Roger Neill	Andrew Sangster	Mary Weafer
Dr Michael Leonasio	Valerie Nelson	Rabbi Elizabeth Sarah	Alfred Webb
Dr Susan Lesser	Frances Newman Taylor	Ruth Savery	Jeffrey Weinberg
James Lewandowski	Todd Newmark	Lynn Schenk	Frederic Weiss
Isabel Lewis	Kooi Sim Ng-Kau	Professor Fabio Schiantarelli	Judith West
Ann Lewis	Rosalind Niblett	Professor Philip Schlesinger	Marvin Wexler
Flora Liebich	James Nicol	Dr Gunter Schlusche	Warren White
Albert Lilienfeld	Rachael Norman	Professor Marius Schwartz	Roseanne Wildman
Bo Lindroth	Robert Ogden	Professor Carlo Scognamiglio	Gerta Wilford
Peter Lineal	Erich Opfermann	Douglas Scrivner	Steven Wilshire
Dr Robert Litwak	Dr Jonathan Oppenheimer	Keith Secular	Billy Wilson
Samuel Livermore	Dr Richard Owen	Probir Sen	Professor Peter Winship
Rosemary Lovelock	Rita Packford	Karla Shepard Rubinger	John Winskill
David Lowman	Clifford Paice	Elizabeth Shields	William Winward
Kirsten Lundberg	Dr Bala Paramanathan	Dr Douglas Shier	Timothy Wolfe
Professor Lisa Lynch	Wendy Parkes	Graham Shore	Samuel Wolff
John Macrory	Kevin Parris	Josephine Simpkins	Meechun Wong
Professor Richard Macve	Sarah Parsons	Deborah Singerman	Ruth Wood
Shaun Maguire	Gita Patel	Dr Nirvikar Singh	The Hon John Woodcock Jr
Iain Manning	Chinubhai Patel	John Sloane	Philip Woods
Professor Robin Mansell	Duncan Paterson	Bryan Smith	Anthony Wright
Professor Maria Cristina Marcuzzo	Lawrence Pattinson	Aubrey Smith	D Wrigley
Dorothy Marden	Dr John Pattison	John Smith	Michel Wurth
David Markham	Janet Peacock	Joyce Smith	Bruce Wymore
Joseph Marlowe	Michael Pearson	Ambassador David Smith	Michael Young
Professor Gerald Mars	Margaret Pederson	Dr Claudette Smith	Michael Zuckerman
Douglas Martin	Jacqueline Penner	Judith Spells	Dr Brigitte Zwerger

1980-89

Pamela Aall
 Dato Umi Abdul Majid
 William Acres
 Mark Aeron-Thomas
 Christian Ahlborn
 Altan Akbiyik
 Mahmood Al Alawi
 Richard Alexander
 Jean-Marie Almeras
 Dr Hala Alumran
 Doreen Anderson
 Dr Charles Armstrong
 Elia Armstrong
 Artemis Artemiou
 Kate Ascher
 Jane Ashley
 Dr Bjorn Aune
 Richard Babson
 Richard Banta
 Dr Richard Baskerville
 Dr Antonie Bauer
 Marc Baum
 Jayne Bayley
 Ian Bell
 William Bellis
 Stefan Benedetti
 David Bird
 Christopher Birt
 David Bizer
 Eric Blank
 Edith Boehler
 Amy Borrus
 Harold Bowen
 Scott Bowie
 Gregory Branch
 Ronald Brown
 Steven Brown
 Thomas Bulman
 Sheryl Burton
 John Butler
 Alexander Calabro
 Vincent Camerlynck
 John Campbell
 Thomas Carothers
 Julian Chaffey
 Baldev Chawla
 John Chester Jr
 Wang-Ngai Cheung
 Fook Chew
 Carissa Christensen
 Barry Christie
 Andre Chung Shui
 Dr Stefano Cianferotti
 Maralee Clark
 Dr Andrew Clark
 Mary Clark
 John Clifford
 Celeste Cobb
 Steven Cohen
 Caterina Colombo
 Margaret Conway
 Dr Peter Cornelius

The Rt Hon Baroness Jean
 Corston PC
 David Costello
 Elizabeth Courtenay-Stamp
 David Courtenay-Stamp
 Richard Cox
 Sidney Cox
 Mark Cox
 John Crilly
 Terence Cryan
 Brian Curran
 Erik Dahl
 Ross Dalglish
 Dr Francesca Dall'Olimo Riley
 Holiday Dapper
 Anne Davies
 Dr Carolyn Davies
 Karen Davies
 Madlaine Davis-Moradkhan
 Diane de Cordova
 Myriam de Hemptinne
 Dr Alison Dean
 Dr Jorg Decressin
 Judge Manuel del Valle
 John Dodd
 Susan Doe
 John Dolan
 Joshua Dorosin
 Elizabeth Dougherty
 Pamela Dub
 Philippe Dupont
 Karoline Durr
 Alan Ebenstein
 Marianne Ecker-Fierstone
 Erik David Ehnimb
 Professor Lena Ekelund Axelsson
 Dan Elliott
 Guy Elliott
 Paul Ellis
 Shannon Ellsmore
 Tamsen Endicott
 Dominic Endicott
 Dr Timothy Ensor
 Davide Erro
 Bassey Etuk
 David Evans
 Stuart Evans
 Elizabeth Fairweather
 Sanna Fellows
 Michael Fellows
 Anthony Fernandes
 Nicholas Fernyhough
 Hermann Fetz
 Rodrigo Fiaes
 David Fier
 Alexander Finn
 Dan Fitz
 Michael Fitzgerald
 Karen Fitzner
 Gilbert Flaming
 John Flattery
 John Foley
 Dr Mary Forster
 Candice Foss





William Fragakis	Lynda Mary Joeman	Bruce Marshall	Alan Porter
Mario Francescotti	James Johnstone	Milinda Martin	Professor Michael Power
Wendy Freyer	Professor Vijay Kannan	James Masson	James Prappas
Mark Fryberger	Dean Kaplan	Frances McCloskey	Dr Christopher Probyn
Dr Rena Fulweiler	Richard Kaplowitz	Craig McCrohon	George Pyrishis
Kevin Gardiner	Colleen Keck	Terence McDonnell	Peter Rackham
Gary Gero	Denise Keena-Ross	Donald McGonagle	John Ralli
Dr Susan Gaiamo	Ian Kelson	Robert Megna	Shelley Rappaport
Isabella Gillies	Stephen Kennedy	Nilesh Mehta	Diana Rau
Mitchell Glavin	Anil Keskar	Ralph Mendelson	Catherine Re
Adam Glinsman	Shokat Khan	Jeremy Metcalfe	Dr Wolf Reitsperger
Dr Joachim Goergen	Professor Bradley Killaly	Peter Middlehurst	Christine Revoy
Charles Goodier	Damian King	John Mierins	Jeffrey Rhodes
Matthew Goodman	Kerry Kircher	Melanie Miller	Aled Roderick
Robert Goold	Gary Kirwan	Robert Minikin	Heather Rogers QC
Adam Goulston	Maria Klerides	Steven Mintz	Andrew Rogerson
Mark Greatrex	Timothy Knight	Jonathan Mirsky	Kenneth Rotman
Professor Steven Greer	Kathryn Koch	Siddhartha Mitra	Ivan Rudd
Janet Grenier	Dr Laurenz Kohlleppel	Irene Monks	Walter Rudeloff
Daniela Gressani	David Korduner	Helen Moorman	Nicola Sampson
Nicholas Groombridge	Tobias Kramers	Romel Moradkhan	Harry Samuel
Deborah Gross	Alfonso Kratter	Virginia Morck	Ferenc Sanderson
Gregory Gullickson	Francois Kremer	Jonathan Morduch	John Sandhop Jr
Charles Gundy	Harry Krensky	Christopher Moss	David Satola
Christoph Haas	Dr Stephan Kux	Michael Moszynski	Horst Schade
Teresa Hacunda	Helene Kvale	Dr Gerd Mueller-Brockhausen	Emmanuel Schatz
Roderick Haig	Raymond Kwok	Edward Mutema	Dr James Schear
Rachel Hamwee	Paul Lambert	Najy Nasser	Fred Scherneck
Catherine Handley	Kirsty Lang	Dr Linda Neilson	Andre Schneider
Peter Handscomb	Paul Langdon	Richard Nesbitt	Thomas Schoder
Karen Harasymiak	Michael Langman	Jane Newcome	Iva Schroeder
Susan Hart	Paul Lansdell	Stephen Newell	Carlos Schuster Chayla
Dr Elizabeth Hart	Kim Lansdown	Dr Kathleen Newman	Dr Richard Schwartz
Ian Hart	Andrew Lappage	Graham Nicholson	Katherine Scott
Clare Hatcher	Heather Larrick	Philip Niem	Eric Secoy
Pierre Hayot	Marc Lavoie	Lyn Nixon	Jonathan Seed
Carolyn Haysom	David Lawton	Professor Stanley Nollen	Robert Seifert
Laurent Haziza	Michael Lebrecht	Nancy Nollen	Dr Andrew Sentence CBE
Maureen Healy	Ellen Lederman	Sally Norman	Vijal Shah
Richard Heckinger	Kim Huat Lee	Andrew Norris	Shakunt Shah
Timothy Hedger	Francis Lee	Oliver North	Lata Shah
Jeffrey Hedlund	Dr William Levine	Brian O'Flynn	Andrew Sieg
David Henley	Andrew Levy	Dr Anino Ogbemi	Kenneth Sigas
Christopher Heppa	Catherine Lewis La Torre	Dr Stephen O'Kane	Lisa Silver
Judith Hindes	Justin Lilley	Professor Brendan O'Leary	David Simmons
Patrick Hitchcock	Bernard Link	Warren Oliver	Daphne Simotas Bloore
June Hoad	Kay Lister	Abe Oppel	Bedi Singh
Dean Hodge	Christopher Lock	Jean Oppenheimer	Vidya Singh
Theodore Hoffman Jr	James Loeffler	Peter Oppenheimer	Howard Smith
Mary Holder	Tom Loesch	Reverend Jonathan Ostman	Dr Dawn Snape
Andrew Holland	Neal Logue	Anthony Owen	Susan Snyder
Sally Holloway	Michael Longthorne	Dr Kent Palmer	Marc Sobel
Adelita Hooper	Douglas Lowell	Christopher Pasko	Socratis Socratous
Nigel Hopkins	Dr Ingo Luge	Graydon Paulin	Weng Fatt Soo
Keir Hopley	Paul Lynch	David Peak	William Southam
Graeme Howard	Sean Lynn-Jones	Eric Penanhoat	Giuseppe Spadafora
Baroness Elspeth Howe CBE	Dr Arup Maharatna	Neil Pepin	Akis Spyropoulos
David Hunter	Christopher Mahoney	Brian Percival	Jacobus Steffens
Michael Hyman	Dr Matthew Mallet	Lisa Peterson	Kathleen Stephansen
Adolf Ihde	Christiane Mandell	Thomas Pine	Jane Sternick-Hitchcock
Professor Duncan Ivison	Professor Gabrielle Marceau	Breck Platner	Jacqueline Stevens
Paul Jaffe	Pierre Margue	Lloyd Plenty	Angela Stewart
Catharine James	Dr Laura Markowe	Claire Poll	Penelope Stowe
Jeremy Jensen	Pamela Marsh	Dr Roger Poole	Christina Stroh



Marie Sullivan
Alistair Summers
Michael Surgalla Jr
William Swadling
Henry Tai
Dr Sailesh Tanna
Maurizio Tassi
Stewart Taylor
Dr Jon Thorn
John Thornton Jr
Andrea Tisi Austin
Samuel Tob
Barbara Trebbi
Stuart Trow BSc
Annemarie Van Der Meer
Professor William Van Vugt
Dr David Van Zandt
Kenneth Venables
Jennifer Venn
Jonathon Venn
Stephen Von Oehsen
Keith Wade
David Wah
Tira Wannamethee
Richard Warren
Timothy Watkinson
Ian Watson
James Weinberger
Jeffery Wells
Dr James Wentz
Monica Wilkinson
James Wilkinson
Wayne Willbur
Ruth Wills
Professor Richard Wilson
Karen Winslow
Edward Wood
Dr David Woodward
Professor Stephen Wright
Andreas Wunsch
Boh Yap
Richard Yates
Ichiro Yoshino
Dr Sami Zahran
Dr Eleni Zatz Litt
Jeanne Ziminski

1990-99

Amir Absoud
Stephanie Affentranger Kveton
Trude Akersveen
Stuart Allen
Alvaro Alonso-Garbayo
Jalal Al-Yawer
Brigadier Israel Amoah
Augi Anagnostou
Irena Andrassy
Professor Dr Martin Anthony
Alessia Anzini
Tina Archer
Peter Aspbury
John Atherton
Gordon Au

Thomas Aubrey
Antony Baldwin
Raffi Balian
Whitney Ball
Wilson Barmeyer
Cristi Barnett
Dr Briana Barocas
Claudia Barrachi
Jeffrey Barron
Dr Peter Barschdorff
Gabriella Barschdorff
Corneth Bart-Williams
Catherine Baxendale
Robert Becher
Leena Beejadhur
Michael Bell
Ragna Bell
Tanja Benedict
Bengt Berg
Ricardo Berner Sulkin
Virginia Berten
Professor Alnoor Bhimani
Gerd Bielenberg
Anne Bjortvedt
Gene Blahato
Gorham Blaine
Dr Margaret Blake
Professor Brad Blitz
Christopher Bodell
Dr David Bongard
Claire Bonilla
Dr Tone Bringa
Dr John Brown
Helen Buckley
Katherine Bulman
Justin Burden
Thomas Burkemper
Mark Callingham
Angela Camber
Bernarda Capra-Finnissy
Thomas Carlin
Jean-Paul Casel
John Casey
Erik Caspersen
Robert Cerdan
Siew Chan
Ivan Chan
Satjinder Chander
Rosemary Chandler
Ashok Chandran
Alexis Chardigny
Francois Chesnay
Dr Carmencita Cheung
Chude Chidi-Ofong
Tse-Wei Choe
Wei Choi
Dr Christine Chow
Maria Christofidou
Robert Clark
Barry Clarke
Juliette Clarke
Joseph Collins
Ian Collinson
Maria Consoli

Dr Mary Cooke
Anna Coquillette Caspersen
Sarah Coulson
Amy Creighton
Bernadette Cruz
Michael Culhane
Sean Culhane
Dr Riccardo Curcio
John Dahl
Christopher Dann
Alexander Darmoo
Marja Davies
Doyle Day
Peter De Graaf
Rafael De La Fuente Moreno
Aurelie Debussy-Pech
Dr Constantine Delicostopoulos
Yiola Demetriou
Stephanie Dencik
Aroon Dhoot
Brett Diment
Charles Duross
Delroy Dwyer
Stephen Dyott
Simon Early
Richard East
Michael Eaton
Simon Ede
Dr Barton Edgerton
Nicky Edwards
Kurt Ersoy
Sabrina Eshaghian
Alexandros Ethelontis
Samson Ezobi
Dr Jean-Paul Faguet*
Nicola Farrell
Eric Fastiff
Brecht Feigh
Alistair Fell
Felix Fischer
Page Fleming
Michalis Florentiades
Franz Flotzinger
Rick Foker
Bruno Fontaine
Maris Fravel*
John Fry
Amalia Fugaru
Kristen Furlan
Pamela Furness
Paraskevi Galani
Christophe Gante
Elena Garcia de la Fuente
Lady Katharine Gavron
Gillian Geddes
Amir Gehl
Ilan Gewurz
Julie Gibbings
Brian Gilmore
Hideki Goda
Dr Francis Goodall
George Goutis
Irving Graham
Heidi Greiling

Luis Guerrero-Rodriguez
Gonca Gürsoy Artunkal
Harley Haberman
Emily Haithwaite
Margaret Hall
Angela Hallmark
Beth Halpern
David Hand
Roula Harfouche
Dr Elaine Harrison
Motonobu Hasegawa
Stefan Haselwandter
William Hauk
Katherine Helgerson
William Henderson
Sean Hennessey
Carlton Henry
Professor Dorothea Herreiner
Sophie Heyman
Jeremy Higgs
Dr Jens Hilscher
Martyn Hobrough
Dr Ulrike Hoffmann-Burchardi
Mark Holleman
Reverend Kwan Hsueh
Tanveer Hussain
Christopher Hutchfield
Colin Iles
Sikander Ilyas
Hiroshi Ito
Philip Jackson
Lisa Jacobson
Alexander Jan
Michael Javid
Dr Catherine Jenkins
Joerg Joergensen
Joanna Johnston
George Jones
Lisa Joven
Jason Judd
William Junkin
Michael Jutras
Amie Kalac
Raed Kanaan
Farzana Karim
Gauri Kasbekar-Shah
Amanda Kazanjian-Culhane
Robert Keber
Dr Louise Keely
Tristram Kennedy Harper
Joel Kent
David Kesselman
Sheldon Kissoon
Johanna Klein
John Knott IV
Keng Koay
Barbara Kolator
Jennifer Koller
Nina Kostic
Katharina Kraak
Gabriela Krader
Knut Kroepelien
Susan Kumleben
Elisabeth Kyräl



Mikko Laajava
 Alexis Lagoudakis
 Ranjit Lakhnopal
 Dr Dirk Lammerskoetter
 Aynsley Lammin
 Dr Thomas Lawton
 Christopher Layton
 Michael Lee
 Dr Anthony Lee
 Brian Lee
 Douglas Levitt
 Siobhan Lewington
 Martin Lewis OBE
 Toby Locke
 Dr Louise Locock
 Jeffrey Looby
 Dolores Lopez-Hernandez
 Captain Donald Ludlow
 Alessandra Lustrati
 Dr Vivienne Mackay
 Rupesh Madlani
 Alexandre Maia
 Francisca Malaree
 Pamela Mar
 Pedro Mariani
 Heather Markel
 Jeremy Marsh
 Eva Martensson
 Dr Patricio Martinelli
 Thomas Mazzora
 John McEvoy
 John McKay
 David McKean
 Patrick Mcmorrow
 Beatriz Meldrum
 Marc Meth
 Dr Kevin Michaels
 Serge Mimouni
 Michael Modiano
 Gaurav Mohindra
 Aspasia Molfeta
 Uri Monson
 Richard Morawetz
 Simon Morgan
 Richard Morley
 Clare Mucklow
 Peter Mueller
 Fiona Mullen
 Zane Murdock
 Dr Johannes Nagel
 Dr Holger Nehring
 Dr Maria Neophytou
 Alexander Neuber
 Mia Norcaro
 Paul Nugent
 Karen Nye
 Dr Kevin O'Callaghan
 Kristen O'Connor
 Takashi Oda
 Dr Raymond Ojserkis
 Bemí Okorodudu
 Dr Victor Olisa
 Dr Sarah Owen-Vandersluis
 Michael Owubokiri

Deborah Pacquette
 Julian Palmers
 Helen Pang
 Dr Nan-Yeong Park Matthews
 Pascal Paschoud
 Mark Pasko
 Nigel Passmore
 Sabera Patel
 Rajul Patel
 Thomas Pearson
 Andreas Pecher
 Fionuala Pender
 William Pershke
 David Person
 Eric Peter
 Michael Peterson
 Andreas Petsas
 Rebecca Plane
 Dr Roseanna Pollen
 Alison Post
 Dr Norman Price JP
 Giorgio Prodi
 Dr James Provan
 Brenda Puech
 Satish Pulle
 Antoine Pun Lai Yuen
 Tamara Quinn
 Victor Quiroga
 Mohibur Rahman
 Sharon Raj
 Miguel Ramos-Fuentenebro
 Helen Redesdale
 Lady Gillian Rees-Mogg
 Professor Ricardo Reis
 Marcus Renusch
 David Rickard
 Alf Riple
 Kenneth Roberts
 Dr Amanda Robinson
 Christopher Roe
 Natalie Rogers
 Andrew Rowe
 Dr Mar Rubio
 Ann Rush
 Elizabeth Rycott
 Karen Saah
 Tariq Sadiq
 Raffaele Sadun
 Junko Saito
 Silvia Santoro
 Sean Saunders
 Shilpen Savani
 Joseph Scafidi
 Parul Scampion
 Kathleen Scanlon Bradley
 Dr Rosa Scoble
 Antony Scott
 Alexey Seleznev
 Michael Seo
 Shreya Shah
 Ketan Shah
 Emily Sharke
 Sonja Shechter
 Mohamed Sheriff

Christopher Sherwood
 Kazunari Shiraiso
 Omar Siddiq Amin Noer Rashid
 Lutfey Siddiqi
 Andre Siegel
 Gauri Sikri Lakhnopal
 James Smith
 David Sohn
 Thomas Songer
 Bryan Southergill
 Christian Stark
 Marshall Steeves
 Amanda Steimberg
 Dr David Steinberg
 Kimberly Summe
 Margaret Suralik
 Rebecca Susser
 Philip Susser
 Edward Swenson
 Luke Swinhoe
 Timothy Sykes
 Dr Daniel Szpiro
 Ouida Taaffe
 Nerine Tan
 Mona Tannous
 Nadhawan Tanyongmas
 Bjarne Tellmann
 Michael Tempero
 Charles-Henri Terlinden
 Harald Thaler
 Dr Michael Thomas
 Madeline Thomas
 Mirella Tronco
 John Trudgian
 Bruce Tuchman
 Andrew Tweedy
 Antoinette Valsamakis
 Dr Edwin Van De Haar
 Elisabeth Van Der Gulik
 James Van Doren
 Robert Van Schaik
 Dr Judith Van Walsum-Stachowicz
 Robert Vandersluis
 Payal Vasudeva
 Simone Verri
 Jeroen Visser
 Dr Giorgio Volpe
 Cristina Von Busse
 Ernst Von Kimakowitz
 Christopher Vuturo
 Benjamin Wales
 Dr Richard Walker
 Richard Walker
 Jane Walsh
 Colm Walsh
 Aaron Walters
 Gregory Watson
 David Waugh
 Susan Webb
 Muna Wehbe
 Jeremy Weinberg
 Dr Matthew Weinstein
 Jonathan Weissbart
 David Whippe

Griffin Whitney
 Alexander Wickenhofer
 Achim Wiechert
 Dr Dirk Willer
 Meriel Wilmot-Wright
 Dr Christian Winkler
 Toby Wise
 Michael Wiser
 Mara Yamauchi
 Chi Yau
 Yew Khuen Yoon
 Jamsheda Young

2000-2009

David Aaron
 Charles-Arif Abdul Wahab
 Melis Acuner
 Beatrice Addo
 Syed Ahmad
 Aneek Ahmed
 Zainab Ahmed
 Peter Aimufua
 Tayyaba Ajrullah
 Abimbola Akinyemi
 Tim Akkouch
 Arya Alatsas
 Benjamin Aleman-Castilla
 Dr Lewis Allan
 Adil Alshinbayev
 Mariana Alvarez-Almazan
 Gulshat Amandurdyeva
 Marija Ancupova
 Paige Andrews
 Kaja Anker-Rasch
 Ira Antonic
 Dr Gianluca Antonucci
 Dr Philip Armour
 Hassan Asmal
 Dharana Aubeelack
 Dr Ebru Avcioglu
 Yezdaan Baber
 Dr Laura Bakkensen
 Vikram Balachandar
 Ioannis Balis
 Brandon Barford
 Thierno Barry
 Corina Barsa
 Thomas Batten
 James Beach
 Lisa Beauvilain
 Radha Bedi
 Antonello Benati
 Matan Ben-Aviv
 Andreas Bender
 Roger Berger
 Faith Berrier
 Romain Berry
 Erica Bertolotto
 Preeyesh Bhadresha
 Lee Biernbaum
 Funda Bilgic
 David Blood
 Bibi Boas Bondesen



Michael Bojko
Akkaraj Boonyasiri
Nohad Bouez
Paulina Bozek
Richard Bradley
Santiago Braje
Dr Norbert Bramerddorfer
Sophie Briand
Jeroen Broekema
Marek Broniewski
Katie Brown
Justas Bugnevicius
Andrew Burych
Nicola Butler
Marshall Calestro
Mary Campbell
Laura Campos
Carlos Canales
Trixie Cartwright
Olympio Carvalho e Silva
Mustafa Celiktemur
Francesco Cerlenco
Alberto Cervantes Rodriguez
Bidisha Chakraborty
Helen Chang
Chiu-Ping Cheng
Wai Cheung
Rachel Chia
Dr Thomas Christiansen
Andrew Christie
Didem Ciner
Dr Peter Cirenza
Elena Cirillo
Mathieu Clavel
Gregory Clifford
Allyn Reza Cockrell
Megan Cokely
Guy Collender
Cristian Ioan Comsa
John Coogan
Dr Anne Corbett
Paul Cox
Edward Crowther
Christina Curry
Samantha Curtis
John Dailey
Donatas Dailide
Oluwatoyin Damola-Akinrolabu
Daniel Danso
Jennifer Dargan
Andrew David
Georgina Davidson
Alison Davidson
Dr Cristel De Rouvray
Daniel De Simone
James Dearman
Bob Deen
Martha Deery
Caroline Dehe
Bridget Devoy
Abhishek Dhirga
William Dick
Niamh Doherty
Helene Dongois

Daniel Jan Dormann FRSA
Christopher Down
Sally Dudleston
Julia Dwyer
Armands Eberhards
Zachariah Eccleston
Nicolas Echevarria
Miriam Edelman
Hans Ekelund
Dr R Elson
Tristan Elwell
Daniel Emch
Seref Enver
Daniel Falkiner
Reza Fardad
Dr Oluseto Fasan
James Fearnley-Marr
Lan Feng
Blake Fillion
Alex Finnegan
Brad Flaughar
Federico Flora
Timothy Floyd
Eddy Fonyodi
Gwladys Fouche
Panayiotis Foutros
Jaime-Alexis Fowler
Mayliss Francois
Dean Frankle
Kelsey Froehlich
Francis Gagnon
Claudio Galimberti
Nikolaj Gammeltoft
Fan Gao
Martin Garthwaite
Daniel Gelfand
Rohit George
Cesar Germana Gonzales
Osman Ghani
Aristidis Giannopoulos
The Late John Gibson
Grant Gilbert
Sara Giorgi
Jehona Gjurgjeala
Catherine Godin
Benedikt Goetz
David Gold
Lea Gossart
Pradipto Goswamee
Ernst-Gerrit Grabowski
Christopher Graham
Letizia Grosso
Paula Gruendling
Christopher Gruszczynski
Fenny Gunawan
Dr Maria Gutierrez Domenech
Robin Haettich
Andrew Hagan
Richard Hahn
Andrew Hall
Jacqueline Hallock
Dr Stephen Hammer
Martin Hammond





Xu Han	Molu Lebby	Elizabeth Ogunde	Elena Scherbatykh
Brian Hanratty	Seng Chuen Lee	Killian O'Hagan	Brian Schiller
Ryan Hansen	Wee Lee	Mathieu O'Keefe	Carola Schlagheck
Dr Piya Hanvoravongchai	Leila Lemghalef	Christine Olney Holmes	Paul Schneider
Scott Harris	Wilson Leung	Ingerid Opdahl	Bradley Schneller
Rowan Harvey	Jin Li	Stefan Padberg	Monika Schrod
Daniel Haskell	Jianzhao Li	Roger Paice	Michael Schuetz
William Hatton	Kelvin Liao	Sathaporn Paisanburapa	Riya Sen Gupta
Dr Adli Hawwari	Dr Susan Liautaud	Juan Palacios	Dr Marc Sennewald
Chen He	Miron Lila	Mihai Panaite	Zeinab Shabbir
Deborah Heng Siddiqi	Hanyi Lim	Dinesh Panch	Naimish Shah
Cherine Herrmann	Judy Lin	Younghum Park	Fatima Shariff
Atsushi Higuchi	Stephen Linaweaver	Talia Parnass	Alexa Sharples
Zachary Hill	Yuanmo Liu	Dr Matthew Partridge	Michael Shaw
Dustin Hoffman	Lisa Liu	Rashma Patel	Donald Shawler
Christian Hole	Mark Lobel	Nisha Patel	Wing Man Shea
Michael Horgan	Benjamin Loewy	Deepali Pattani	W Sherb
Rossana Howgrave-Graham	Damon Lombard	Grace Pau Southergill	Kevin Shers
Zhenyi Huang	Xavier Lopez Del Rincon Troussel	Maximilian Paulus	Elliot Simmons
David Hufless	Montserrat Lopez Puga	Scott Pedowitz	Diala Sinno
Stephanie Huh	Yiing Low	Sean Peirce	Dr Ramteen Sioshansi
Jonathan Hung	Chen Kuo Low	Candida Perera	Rachael Smart
Stuart Huston	Hazel Lucian	Holly Peterson	Gabrielle Smilga-Palardy
Dr Indrek Ibrus	Dr Ting Luo*	Michele Petoichi	Steven Snyder
Yiannos Ioannou	John MacIntosh	Peter Petrov	David Soustiel
Dr Keiko Itoh	Christopher Mainella	Yie Phang	Olabisi Sowunmi
Dr Markus Jaeger	Sujata Majumder	Michael Picard	Anushree Srivastava
Arpad Jakabos	Sheharyar Malik	Kari Pikkarainen	Anna Stasinou
Jonathan Janus	Maria Mamone	Jared Pilosio	Kim Stein
Kalika Jayasekera	Charles Mandly Jr	David Pitluck	Miltos Stella
Richard Jeremy	Jay Manek	Grant Power	Thomas Stevenson
James Johnson	Rumena Manolova	Victoria Preston	Mark Stiernerling
Delilah Jordahl	Rose Martin	Ralf Preusser	Jeffrey Stocks
Francois Josserand	Antoni Mateu Aguilo	Farah Purwaningrum	Amanda Stokes-Roberts
George Karaolis	Geoffrey May	Dr Tobias Raffel	Julie Stoll
Wojciech Kaszynski	Dr Thomas Mcclean	Krithika Ragunathan	Katie Stone
Eric Kauffman	Luis Medina	Gerard Raiti	Jukka-Pekka Strand
Robert Kay	Jeffrey Mettille	Rahini Rajendran	Sergei Strigo
Brian Kennedy	Jonna Meyer-Spasche*	Idham Ramadi	Sandie Stringfellow
Joel Kenrick	Tom Miles	Prashant Rao	Carlos Suarez Doriga
Kevin Keogh	Lawrence Miller	Afifi Raswan Dean	Gregory Sullivan
Deepti Khaire	Kevin Mills	Rabab Raza	Bradley Sullivan
Ali Khaki	Neal Miniyar	Stephan Reimers	Andrew Sultana
Anam Khan	Nimesh Mistry	Raj-Ann Rekhi	Jing Sun
Mustafa Khanbhai	Jean-Baptiste Molle	Thomas Rider	Srivaths Swaminathan
Amit Khandelwal	Alain Molnar	Tariq Riebl	William Swenson
Joachim Kiefer	Jonathan Montpetit	Rebecca Robinson	Karen Swift
Joo Kim	Jennifer Moore	Jorge Rodas Chiarella	Tracy Swinburn
Meelis Kitsing	Gabriel Moran	Neoklis Rodoulis	Christina Swindells
Zainab Kizilbash	Dr Matthias Morys	Mahmud Rogers	Dylan Szymanski
Arber Koci	Dorlin Muresan	Shontae Romain	Yu-Wen Tan
Jarroed Koenig	John Muth	Chotevit Roonsamrarn	Elizabeth Tarloski
Konstantinos Kolovos	Joshua Nagler	Timothy Root	Daniel Taylor
Benedikt Kormaier	Shahrulkh Naik	Gurdeep Sahota	Steven Taylor
Milan Kosorin	Shahin Namati-Nasab	Robert Salkeld	Clare Taylor-Gold
Dr Constantinos Kourouyiannis	Stefan Nardi-Hiebl	Arto Salonen	Alexander Teytelboym
Matthew Kovalick	Dr Nicholas Nedzynski	Zarina Samai	Andreas Theodossiou
Memli Krasniqi	Dr Suzanne Newcombe	Scott Sams	Chui Yee Thong
Herr Peter Kulka	Van Nguyen	Piers Sanders	Romain Tiffon
Shantini Kunhamboo	Anh Tuc Nguyen	Rebecca Sanderson	Shiva Tiwari
Tadashi Kuramatsu	Michelle Nicholl	Catherine Sanger	Darshana Towakel
Jonathan Kwan	Takashi Nishiwaki	Simona Santojanni	Christopher Toy
Michael Lavrysen	Alexander Nizan	Charles-Erwan Savary	Elena Trifonova
Alexander Lazanas	Tomas O'Donoghue	Christopher Schell	Jonathan Tuovinen



Maxime Turcotte
 Laura Turner
 Charles Conrad Uy
 Roberto Velasco
 Marianna Ventouratou
 Dr Dejan Vercic
 Manja Vidic
 Heather Viets
 Ulrich Vitenius
 Nora von Ingersleben-Seip
 Nathalie Von Massenbach
 Andreas von Paleske
 Peter Von Philipsborn
 Dr Maria Waldinger*
 Sophia Walker
 Hanjiao Wang
 Anthony Wearden
 Michael Wechsler
 Ryan Weeks
 Matthew Weinbaum
 Joshua Weinberg
 George Wetz
 Charlotte Whitehorn
 Charles Whitney
 Dr Urs Wickihalder
 Anne Wijkman
 Catherine Wilson
 Timur Wolf
 Sarah Wolpert
 Dr Tae Joon Won
 Thien Wong
 Fiona Wong
 Professor Sir Robert Worcester
 Rebecca Wright
 Haoyu Yang
 Thomas Yeomans
 Ara Yeromian
 Bryan Yip
 James Young
 Simon Yu
 Jiayi Yu
 Graham Zabel
 Anita Zech
 Guoer Zhang
 Kan Zhang
 Ang Zhao
 Dariusz Zietek

2010-present

Khaled Abdul Wasey
 Samuel Adatto
 Nikolaus Adenauer
 Dalia Adib
 Hasan Afzal
 Anisa Ahmed
 Babatunde Akinboyewa
 Ahmed Alani
 Robert Albee
 Alexandros Aldous
 Altaf Almadhyan*
 Joseph Anderson
 Michael Antpöhler
 Felipe Arisa Yamada

Priyank Arithia
 Melvin Asare
 Amanda Asare-Opoku
 Edward Ash
 Arandeep Aujla
 Laura Aumeer
 Avgerinos Avramikos
 Kamila Baczek
 Amarpal Bajwa
 Joshua Bennett
 Peter Bent
 Victoria Bew
 Aaditya Bhagra
 Samarth Bhasin
 Glen Billesbach II
 Carrie Bodley-Bond
 Vincent Borstell
 Elisabeth Bos
 Devin Bostick
 Joshua Boylan
 Dr Niall Brennan
 Anne Brockmeyer
 Giulia Buttini
 James Byrne
 Jacob Cafritz
 Chloe Cafritz
 Daphne Cafritz
 Chujia Cai
 Katie Campbell
 Anna Caro
 Daniel Carry
 Sergio Carvalho Rodrigues
 Katerina Cervenkova
 Akhil Chainwala
 Calvin Chan
 Mohammed Chaudry
 Guandong Chen
 Sidong Chen
 Yang Chen
 Xin Chen
 Runyao Chen
 Joseph Cheng
 Kin Cheung
 Soon Nee Chik
 Melissa Chiles
 Constantinos Christou
 Maria Ciucu
 Ashley Coale
 Rory Codd
 Abiola Cole
 Emily Collins
 Adam Connell
 Tom Cornell
 Tommaso Crackett
 Christopher Cubitt
 Yuyang Cui
 Kelli Cumiskey
 Alexander Czepliwicz
 Alastair Da Costa
 Nikhil Dama
 Jonathan Damsgaard
 Tamara Dancheva
 Dustin Daniels*
 Peter Dargie

Ananya Dasgupta
 Jilla Dastmalchi
 Aaron Davis
 Mary De Boer
 Lucas De Ross Welter
 Yuvan Deena
 Andreas Demetri
 Elizabeth Dewolf
 Rui Ding
 Tzveta Dinova
 Hallam Dixon
 George Dolan
 Nicole Dolwani
 Nevio Duci
 Nicolas Dupuis
 Gurbinda Dusanj
 Camille-Michel El-Asmar
 Lauren Engelbert
 Ricardo Espinosa Schettini
 Sophie Everest
 Joseph Faith
 Yi Fan*
 Mitchell Fay
 Rebecca Fellas
 Alexa Fifield
 Kobi Finestone
 Michael Fitzgerald
 Ryan Flynn
 Matthew Frakes
 Ewuradjoa Gadzanku
 Luka Gajic
 Dr Christos Galanopoulos
 Stephanie Gale
 Imogen Galilee
 Sara Galloway
 Philip Gasslander
 Manuel Geggus
 Catalina Geib
 Vincent Geloso
 Sascha Georgiou
 Andrew Georgiou
 Citabria Gernetzke
 Ahmad Ghaddar
 Dr Bhawan Gharti Magar
 Gabriele Giacalone
 Harry Gibson
 Bennett Golder
 Andreas Göller
 Irma Gomez Robles
 Siddharth Gopakumar
 Mariana Graca
 Elli Graham
 Trevor Graney
 Alistair Grange
 Bonita Grupp
 Thomas Gualtieri
 Vishal Gudhka
 Asli Guner Paul
 Sahil Haria
 Philippe Harles
 Katinka Harsanyi
 Eleonora Harwich
 Hansang He
 Andrew Hendrix

Nikolai Hentsch
 Kristin Heume
 Jacob Hipps
 Melissa Hiscock
 Sze Wai Ho
 Bach Hoang
 Hai Hoang
 Stuart Hoddinott
 Yannick Horas*
 David Hounsell
 Jingmin Hu
 Benran Huang
 Siyuan Huang
 Ailin Huang
 Andreas Huber
 Chuen Hui
 Jared Huish
 Simeon Human
 Trevor Hunnicutt
 Zahra Hussain
 Marko Javorsek
 Christian Jochnick
 Licia Johnson
 Vincent Johnson
 Matthew Jones
 Jana Juginovic
 Jeevan Jyothyprakash
 Priya Kale
 Dina Kamal
 Samantha Kanu
 Michael Karran
 Purvaja Kavattur
 Amanda Kelly
 Kirsty Kenney
 Abbas Khaku
 Fraz Khan
 Radima Khatataeva
 Sarah Khawandi
 Patrick Killing
 Dae Kim
 Elizabeth Koenig
 Eleanor Koller
 Linfei Kong
 Aspasia Kontaxi
 Karina Konz
 John Korevec
 Ozkan Koyuncu
 Aleksandra Krasteva
 Rose Krause
 Kamil Krawczyk
 Barbora Kudzmanaitė
 Philippe Kuhn
 Lukas Kuhn
 Mark Allen Kunzman
 Mehul Lad
 Colleen Lafontaine
 James Lally
 Herr Emanuel Lang
 Dr Luis Lastra Gil
 Pui Fung Law
 Dr Kwangjin Lee
 Chee Huan Lee
 Mun Leong
 Mikhail Levin



Sofia Levine
Jiaren Liang
Cheng Lim
Kah Wai Lim
Yijue Lin
Chunyi Lin
Cédric Lindenmann
Dongshu Liu
Josie Lloyd
Genevieve Lloyd
Michael Lu
Geng Luo
Yan Luo
Adomas Malaška
Mark Malik
Barbora Malikova
Mark Margaretten
Darrold Mariathasan
Benedetta Marino
Máté Martin
Christina Massoud
Emily Mathew
Elizabeth McKay
William McMonagle
Gabrielle Melvin
Marcus Mepstead
Samira Mezroui
Christopher Micallef
Xiao Min
Margaret Moore
David Möritz
Logan Morrow*
Cecilia Mourain
Haytham Mousa
Vaishali Mullapudi
Zayn-Ul-Abidin Musa
Fathima Nafeel
John Nagler

Dhiraj Nainani
Nicholas Nalbantian
Darin Nee
Cleo Nevakivi-Callanan
Joshua Newlove
Sophie Newman
Ornella Nicolacci
Shaun Nolan
Daniyar Nurmakhatov
Christopher Ogunleye
Shion Okada
Chigozie Okeke
Krystle Adesoye Onibokun
Daniel Osrin
Lars Otto
Joshua Oyeyinka
Andreas Pahler
Wenlin Pan
Laetitia Pancrazi*
Cynthia Pang
Joseph Pearson
Daniela Perez Aguilar
Kathia Pin
John Pittock
Marie Plishka
Jan Polach
Kerthana Prakash
Nampha Prasithiran
David Quintanilla
William Raich
Andreea Rapeanu
Mohammed Raslan
Anjana Ravi
Syed Raza
Dylan Richts
Pierre Roca
Gabriel Rodriguez Diaz
Dr Portia Roelofs*

Romana Roske
Elodie Rouquette
Raktim Roy
Naomi Russell
Mariam Safiullina
Nyusha Samiei
Carl Schnackenberg
Steven Schramm
Amedeo Scippacercola
Virginia Sentance
Hinal Shah
Roshan Shah
Dennis Shen
Michael Sheren
Louiza Shiali
Stanislav Shimko
Sanjay Shivaram
Harriet Shone
Thomas Russell Simpson
Alexandra Sirianni
Adam Smith
Krista Soininen
Qirong Song
Line Sørdsdal
Sri Krishnan Sri Anbalagan
Agne Stengeryte
Tatum Summers
Nivedita Sunil
Andrew Suriakumar
Jonathan Sweemer
Amadou Talla
Aaron Tan
Helmut Tang
Trevor Taniguchi
Richard Taylor
Ahila Thillainathan
Katherine Thomas
Nicholas Thomason
Neal Thomson

Shaneeka Tiller
Thea Tomison
Asha Tranquille-Day
Virginia Tsoukatou
Ching Tung
David Turken
Carolyn Uhlein
Nikolaus Vaerst
Julia Van Bezouwen
Dr Brian Varian
Irina Vasilyeva
Felix Volkmann
Nicolas Walters
Allen Wang
Jinqian Wang
Wanyi Wang
Yiqing Wang
Haifeng Wang
Peter Wat
Hayley Welsh
James Williams
Richard Williams III
Natalie Byrd Wilmer
Ka Wong
Gerald Wu
Ruoyu Wu
Benjamin Wu
Yibo Xu
Junkai Xu
Yijing Yang
Ian Yeboah
Safak Yilmazer
Jiayin Yin
Hongzhe Yuan
Jaroslaw Zaba
Jinghua Zeng
Carrie Zhou
Anthony James Zitkus





Friends of LSE

Shona Aitken
Dr Roger Ali
Mahlon Apgar IV
Errol Archer
Dr John Avery Jones CBE
Dr Gerben Bakker
Professor Nicholas Barber*
Stephen Barclay
Jessica Bartholomew
Bobbi Baskerville
Presiley Baxendale QC
Philip Bayliss
Dr Catherine Bell
John Berg
David Berridge
Marcus Birney*
Adele Biss
Marjorie Black
Anna Brandenburger
Sharon Bray
Olivia Capozzi
Ombeline Chardigny
Judith Chernoff
Martha Christie
Ann Clack
Kimberly Conner
Patricia Conolly
Tricia Coyle
Mornay Davison
Sir Evelyn de Rothschild
Joan Dewhurst
Iza Ding*
John Dougherty
Lydia Dunn
Roger Edgar

Professor John Ellis
Gady Epstein*
Diane Fairney
Valerie Francescotti
Charles Gothard
Paul Hally
Anne Hally
Christine Harris
Professor Kathryn Hochstetler*
Nathaniel Holtham
Mary Hooper
Viet Anh Hua
Angharad Hughes
Liz Hydes
Greg Jacobs
Liz Jaggs
Helen Jones
Christopher Kendrick
Ausaf Khan
Susan Kopf
Benjamin Lam
Nicoletta Landi
Camilla Langlands
Dr Timothy Leunig
Karen Lippoldt
Bruce Ludwig
Jeannine Ludwig
Judit Luraschi
Douglas McKenna
Caroline McLaren
Bozena McLees
Anna McLeod McKay
Elizabeth Mitchell
The Late G Modiano
Jason Moore
Julia Moore
Sarah Morrison

Professor Ian Nish
Maggie O'Connor
Dr Dipo Oluyomi
Professor Michael Otsuka
Anne Page
Daren Pietsch Esq
Marco Pompeo
Rita Pompeo
Mark Powell
Noor Qayyum
Patrizia Roehm
Cynthia Rogers
Bo Ruan
Dr Kenneth Shadlen*
Mihir Shah
Dr Priyal Shah
Kumi Shirakawa
Reynaldo Silva (In memory of the
Late Matilde de Silva)
Jill Slattery
Adam Solomon
Adam Swinburn
Shannon Taggart
Robert Tinsley
Ben Tompkins
James Trebillo
Kristina Turken
Armen Vartian
Helena Way
Patti Widdicombe
Peter Williams
Jane Williams
Derek Winterbottom
Kwok Cheong Wong
Yuet Fung Wong
Zaynah Yaqoob

Please note: All supporters included are for the period from 1 August 2017 – 31 July 2018, which is the 2017/18 academic year.

Contributions made during 2018/19 will be recognised during 2020.

LSE values every gift made to the regular giving programme: while every effort is made to ensure the veracity of our regular giving donor roll, there may be instances in which names have been omitted inadvertently or listed incorrectly. If you have any questions or comments, please contact regulargiving@lse.ac.uk

A digital version of the Supporter Roll 2017/18 will be made available and can feature corrections/amendments.

* These donors have made gifts in memory of the Late Mayling Birney



THE LONDON SCHOOL
OF ECONOMICS AND
POLITICAL SCIENCE ■

For more information on volunteering and philanthropy at LSE, please contact LSE Philanthropy and Global Engagement on +44 (0)20 7955 7361 or at advancement@lse.ac.uk
lse.ac.uk/supportinglse