



UNIVERSITY  
OF LONDON

2025



Undergraduate programmes in  
**Economics, Management,  
Finance and the Social Sciences**

With academic  
direction from:



THE LONDON SCHOOL  
OF ECONOMICS AND  
POLITICAL SCIENCE ■

[london.ac.uk/emfss](https://london.ac.uk/emfss)

World class. Worldwide.

# Join the World Class

## 1 A mark of excellence

Gain a degree from the University of London (with academic direction from LSE), a mark of excellence, respected worldwide since 1858.

## 2 Study locally, think globally

Study at a location convenient to you – whether at a teaching centre, independently or online – and gain a prestigious qualification. With no international travel, relocation or accommodation costs, studying a University of London programme at a distance is more affordable than coming to London to study on campus.

## 3 Quality of curriculum

The programmes in this prospectus are developed and examined/assessed by academics at LSE, a federation member of the University of London and one of the world's leading social science universities.

## 4 Employability

Develop transferable employability skills, such as Complex Problem Solving, Adaptability and Resilience, which are sought after by top employers worldwide.

## 5 Global alumni network

On graduation you will join our global community of influential alumni, from leaders in business and industry to Nobel Prize winners.





‘In a fast-changing environment of worldwide access to higher education, a University of London degree continues to offer a guarantee of quality, value and intellectual rigour.’

Professor Wendy Thomson  
Vice-Chancellor,  
University of London



# Your prestigious University of London qualification



## About your qualification

When you graduate with a degree, diploma or certificate from the University of London you will receive two important documents – your Final Diploma (the certificate you receive on graduation) and a Diploma Supplement.

## The Final Diploma

- Indicates that you were registered with the University of London and awarded a University of London degree, diploma or certificate.
- Gives the name of the London School of Economics and Political Science as the federation member that developed the syllabus, curriculum and provided assessment.
- Features the University of London crest and the Vice-Chancellor's signature.

## The Diploma Supplement

- Describes the nature, level and content of the programme you successfully completed.
- Includes the transcript of courses taken, marks achieved and overall classification.
- States the role of the London School of Economics and Political Science and the method of study.

# Contents

## Key dates

Applying for an EMFSS programme through the Recognised Teaching Centre or Independent Learner mode\*

(Please note: This includes all BSc, Graduate Diploma programmes and Certificate of Higher Education in Social Sciences – CHESS)

Step 1: You can apply to study with a Recognised Teaching Centre or as an Independent Learner. Please contact your local Recognised Teaching Centre for their application deadline: [bit.ly/teaching-centre-study](https://bit.ly/teaching-centre-study)

University of London  
Application deadline:  
1 October 2025

Step 2: Following your successful application you will register for your programme with the University of London.

University of London  
Registration deadline:  
1 November 2025

Examinations:  
May and June  
October and November

\*Many EMFSS programmes can also be studied via the Online Taught mode. For details, visit: [onlinecourses.london.ac.uk](https://onlinecourses.london.ac.uk)

## Undergraduate programmes in Economics, Management, Finance and the Social Sciences

### Introduction

World-class academic direction from LSE	6
Our programmes	7
Courses and assessment	8
Which programme level is right for you?	9
How you study	10
Careers and study support during your programme	11
Fast track to professional accreditation	13
Study Globally	14

### Programmes

EMFSS degree programmes	17
Accounting, Banking and Finance	18
Business and Management	19
Data Science	20
Economics	22
International Relations and Politics	23
Graduate Diplomas	24
Certificate of Higher Education in Social Sciences (CHESS)	26

### Reference

Entrance requirements	28
Further information	30



# World-class academic direction from LSE

The London School of Economics and Political Science (LSE) is a world-leading university specialising in the social sciences and home to an inspirational international community. We are ranked as the number one university in the UK (The Times and The Sunday Times Good University Guide 2025) and third in Europe for Management and Social Sciences in the 2024 QS World University subject rankings.

LSE is unique in its focus on social sciences. The School pioneered the study of social sciences, economics and international relations, and LSE academics continue to be among the leading thinkers in these fields. LSE's world-class faculty use their research to influence governments and non-governmental organisations and assist businesses in tackling the world's problems.

LSE is rooted in London, but the School is proud to be international. We consider students on the University of London programmes to be important members of our community – one of the most diverse in the world.

## Stand out from the crowd

LSE was founded to understand the causes of things, in order to transform them. It is our commitment that the Economics, Management, Finance and Social Sciences (EMFSS) programmes will give students the skills needed to lead in solving problems of contemporary global relevance.

You will graduate with additional knowledge, skills and ways of thinking about the world that will translate to further study at undergraduate or master's level, or to the workplace.

These skills will help propel you into careers in a wide variety of fields, from accounting, banking and information systems, to the media, civil service and journalism. Equally, many EMFSS graduates find that their degree has given them the rounded preparation needed for success at master's level study.

## EMFSS programmes

The EMFSS programmes are all University of London qualifications. LSE is a federation member of the University of London and provides the academic direction for the EMFSS programmes. This means that LSE is responsible for:

- planning the structure and content of each EMFSS programme
- developing and writing the study materials
- setting examination papers and marking the scripts
- determining the curriculum and progression of students.

Your final degree, diploma or CHES certificate will be from the University of London and will identify LSE as having developed the syllabus and curriculum and provided assessment.

# Our programmes

## Bachelor of Science (BSc) degrees

The EMFSS bachelor's degrees are based on LSE's internal undergraduate programmes. There are 12 degrees to choose from, spanning LSE's specialisms across the social sciences.

The degrees are offered via two study routes:

- The **Standard Route** is for students embarking on their first undergraduate degree. Students on this route can complete their degree in three to six years.
- The **Graduate Route** is for students who already have an undergraduate degree. This route provides a fast-track opportunity to earn a degree in two years and is of particular interest to students who wish to take their study or careers in a different direction to their first degree.

For more details on our bachelor's programmes, see **pages 17–23**.

For details on the Online Taught degrees, visit:  
[onlinecourses.london.ac.uk](http://onlinecourses.london.ac.uk)

## Graduate Diplomas

These undergraduate-level diplomas are designed for graduates seeking additional education in a different subject area without pursuing a full second degree. The diplomas are of particular interest to those looking to upskill, enhance their career prospects, or change professions. For more details, see **pages 24–25**.

## Certificate of Higher Education in Social Sciences (CHESS)

The CHESS is a standalone qualification that also serves as an entry route to the bachelor's degrees for students who do not meet the direct entry requirements. The CHESS is equivalent to the first year of a bachelor's degree and, on completion, enables students to progress onto the second year of their chosen degree. For more details, see **page 26**.



LSE was founded in

1895

It is now one of the foremost social science universities in the world

37 20

World leaders (past and present) Nobel Prize winners

have taught or studied at LSE

120+

LSE academics are responsible for the academic direction, content and assessment of the EMFSS degrees and diplomas offered via the University of London

25

Graduates of the University of London are currently undertaking postgraduate study at LSE in London

# Courses and assessment

## Courses

The EMFSS programmes consist of study units known as courses. Each course, designed by an LSE-appointed academic, focuses on a specific topic and is examined separately.

- BSc degrees consist of 12 full courses (360 credits) on the Standard Route and 9 courses (270 credits) on the Graduate Route.
- The CHES and the graduate diplomas consist of 4 courses (120 credits).
- Full courses are worth 30 credits; half courses are worth 15 credits.

Students can typically study up to four new courses each academic year. Final-year degree students can take up to five new courses.

## Choosing your courses

Some courses within each programme are compulsory, but there are points where students have flexibility, within guidelines, to select a course of their choosing. If you choose to study at a Recognised Teaching Centre, you should check their available course offerings.

To see available courses, go to: [london.ac.uk/emfss](https://london.ac.uk/emfss) and select the relevant degree.

### The FHEQ framework

The UK Quality Assurance Agency for Higher Education has established

the Framework for Higher Education Qualifications (FHEQ) to classify course levels, ensuring comparability across different institutions. University undergraduate courses are classified into three levels corresponding to standard three-year undergraduate degrees:

- 100 numbered courses are classified as FHEQ Level 4
- 200 numbered courses are classified as FHEQ Level 5
- 300 numbered courses are classified at FHEQ Level 6

Level 7 is graduate level for master's degrees.

## Assessment

EMFSS assessments are set and marked by LSE, but you will complete them in your country of study.

There are two examination periods in the academic year: May–June and October–November. Students may enter for exams in one or both sessions and decide, within guidelines, how many and which exams to take each year.

Each course is assessed independently. Most courses are assessed through a single examination, though an increasing number are evaluated through more than one assessment method.

### Modes of assessment:

- Course examination
- Multiple Choice Questions (MCQs)

- Coursework
- Dissertation (details below)

Recognised Teaching Centre students may be able to complete a **dissertation project** as one of their full courses. Working with a local supervisor, you will conduct research into your chosen topic, giving you valuable experience for postgraduate study and research-related careers.

### Resits:

All EMFSS programmes allow students to resit failed courses. Refer to the relevant programme regulations for details: [bit.ly/UoL-ProRegs](https://bit.ly/UoL-ProRegs)

## University of London degree award

University of London undergraduate degrees are awarded with Honours. The award certificate will indicate the level of academic performance through the degree classification, which is based on the ratified assessment marks. The standard classification system for bachelor's degrees with Honours is:

- First Class
- Upper Second Class
- Lower Second Class
- Third Class

An Unclassified Pass Degree is a degree without Honours.



# Which programme level is right for you?

Award/Level	Why consider this?	Courses	Duration
If you do not currently meet the entrance requirements for our degrees			
Certificate of Higher Education in Social Sciences (FHEQ Level 4)	<p>If you can attend one of the Recognised Teaching Centres with permission to teach the programme and you wish to:</p> <ul style="list-style-type: none"> <li>progress on to the degree programme but do not meet the entrance requirements for the degree</li> <li>gain a stand-alone qualification that will admit you into the second year of the BSc programmes listed in this prospectus and degrees at many universities in the UK, USA and Australia.</li> </ul>	4	1–3 years ▲
If you meet the entrance requirements for our degrees			
BSc Standard Route (FHEQ Level 6)	<ul style="list-style-type: none"> <li>To gain a world-class degree through flexible study.</li> <li>If you have previously studied similar material to a comparable level and depth you can apply for recognition of prior learning (RPL) for up to four full 100 level courses.</li> </ul>	12	3–6 years
If you already have a first degree (bachelor's degree)			
BSc Graduate Route (FHEQ Level 6)	If you hold a full first degree and want a flexible way to gain a second degree, you may be able to complete a shorter than usual study programme (a minimum of two years for most degrees).	9	2–6 years †
Graduate Diplomas (FHEQ Level 6)	If you hold a full first degree in any discipline but, for professional or personal reasons, wish to secure a stand-alone qualification in a named discipline in the fields of Economics, Management, Finance and the Social Sciences. You may also use the diploma as a basis for progression into postgraduate study in a related area.	4	1–5 years

See **page 28** for entrance requirements for: **CHESS, BSc degrees (Standard and Graduate Route)** and **Graduate Diplomas**.

There are many qualifications, from the UK and overseas, which satisfy the University's entrance requirements. For more information visit: [bit.ly/Gen-Entry-Quals](http://bit.ly/Gen-Entry-Quals)

▲ If you successfully complete the CHESS you can transfer to, and complete, a BSc degree in a further two years, paying continuing registration fees.

† The BSc Accounting and Finance, BSc Economics, BSc Economics and Finance, and BSc Management and Digital Innovation have a three-year minimum registration period.

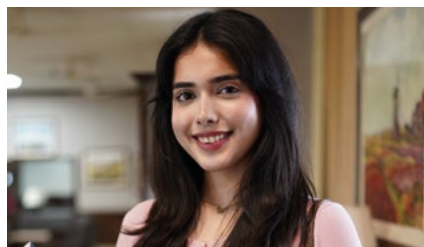
# How you study

## Study modes

Most EMFSS programmes can be studied via one of three modes, allowing access from wherever you are in the world.

### Study with a Recognised Teaching Centre

The University of London works with a global network of over 100 Recognised Teaching Centres (including 30 for the EMFSS programmes) which provide tuition for students. Some centres offer these programmes in parallel with their own degrees. This option is ideal for students who prefer the structured support and in-person



### Romesa Tariq

LGS International Degree Programme, Pakistan

'I chose the EMFSS degree because it is world-renowned. Its value is recognised because its courses are well-structured and the teachers are amazing.'

peer network of a traditional learning environment. For details, visit: [bit.ly/recognised-centres](https://bit.ly/recognised-centres)

### Study as an Independent Learner

Independent Learners have access to the same online study materials as those at Recognised Teaching Centres. However, learning is self-guided, without tuition support from a Recognised Teaching Centre.

### Study Online

The Online Taught mode enables students to study from any location, combining live online sessions delivered by Class Teachers with independent, self-paced study. For details, visit: [onlinecourses.london.ac.uk](https://onlinecourses.london.ac.uk)

## Flexible study

The programmes are designed so students can study at their own pace. You can complete a bachelor's degree in 3–6 years (or 2–6 years on the Graduate Route), a graduate diploma in 1–5 years, and the CHES in 1–3 years. Recognised Teaching Centres can advise on their flexible study options.

As a guideline, you should dedicate at least 35 hours per week for approximately 34 weeks per year to complete four courses in one year.

## Online study materials

You must have internet connectivity to access resources which are only available online. See computer requirements: [bit.ly/computer-reqs](https://bit.ly/computer-reqs)

Once registered, you will receive access to the University of London Student Portal, where you can find your University of London email account and these key resources:

### The Virtual Learning Environment (VLE)

The VLE contains course pages, study materials, and additional resources to enhance your learning, including:

- Course subject guides
- Assessment materials
- Videos delivered by LSE academics, including tutorials and worked examples for some courses
- Online activities
- Study skills and digital literacy support

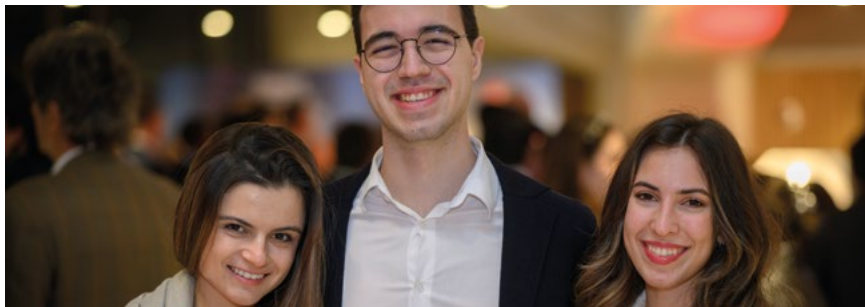
### University of London Online Library

The Online Library provides access to online books, e-journals, and databases for the University's distance learners. Most essential readings for EMFSS courses are available free through the Online Library. You may need to purchase books for some courses. Our online bookstore partners can help source these texts.

EMFSS students are also entitled to free in-person reference access at the University of London's Senate House Library and the LSE Library. For details, see [bit.ly/SHL\\_info](https://bit.ly/SHL_info) and [lse.ac.uk/library](https://lse.ac.uk/library)



# Careers and study support during your programme



## LSE LIFE

LSE LIFE is a team based at LSE who support students to develop and hone their study skills such as exam preparation, time management, essay writing, and critical thinking. During the academic year, they provide EMFSS students with opportunities to:

- attend bespoke workshops tailored to the EMFSS programme, delivered by an LSE LIFE Learning Developer
- engage in free time for Q&A and further discussion with the learning developer
- explore interactive online activities and resources in their own time, via the EMFSS Virtual Learning Environment (VLE).

## Revision Webinars

LSE run Revision Webinar sessions for select courses yearly in March and April in preparation for students'

examinations. Revision Webinars are developed solely for EMFSS students and are an opportunity to hear directly from the course's author or Chief Examiner, reviewing common examination topics and tips on how to prepare and answer questions during the exam. Students also have the chance to ask their own questions to EMFSS students studying across the world and connect with LSE academics.

## Digital Skills Support

Digital skills support to complement your studies is available through online modules designed to enhance students' digital proficiency. These modules are offered by a recommended external supplier and focus on the analysis, management, and visualisation of data using software such as Excel, Python, R, and more. The Virtual Learning Environment highlights which modules are beneficial for students to complete for the relevant EMFSS programmes and courses.

## University of London Careers Service

At the University of London Careers Service, our mission is to advance the employability and careers prospects of our community, whatever they study, wherever they live and whatever their career stage by delivering high quality, innovative and globally informed careers education.

### What can you expect?

As an EMFSS student you are part of a global community, which engages with a range of regional, national and international labour markets. You can expect career and employability support based on:

- your career stage
- where you are based
- what you are studying.

There are many different reasons people choose to study an EMFSS degree.

We offer tailored careers resources, webinars and group career coaching sessions built to your specific career stage and provide opportunities for you to network with peers from different career stages.



As an EMFSS student, you will have access to our digital careers toolbox which includes:

- Careers Connect, featuring a jobs board with opportunities from around the world including internships and graduate roles as well as roles for experienced hires
- live webinars focused on trends within worldwide labour markets and regional job-hunting tips
- Sector Insights panels and Careers Conversations with employers and alumni around the world on a wide range of future of work topics relating to diverse fields of work, from finance to policy
- GoinGlobal – a resource containing detailed careers guides, cultural insights and job vacancies in 40+ countries around the world
- exclusive access to AI-informed resources for improving your CV and job applications.

### Employability Skills

The University of London Careers Service has identified 10 core employability skills, which an EMFSS degree and the Careers Service will help you to develop

so you can successfully navigate your future career path.

Every EMFSS course you study will be tagged with the core employability skills that you will develop through studying the course content.

You will be able to access dynamic online content from our careers consultants, alumni and employers in a range of sectors around the world in order to explore these skills further.

### How can we help you as an EMFSS student to plan the right next steps for your future career?

We offer a comprehensive programme of careers education sessions and resources to support your development in promoting your qualification to employers as well as strengthening your networking skills. Our expert careers consultants also offer:

- bespoke workshops, which include exploring career options with EMFSS students and alumni from around the world
- group career coaching sessions, which provide opportunities for you to benefit from their expertise and experience.

We have designed and produced two career micromodules focusing on Career Planning and Professional Impact, Profile and Success. These can be completed in your own time, at your own pace and will feature on your degree transcript when completed.

### Engage with the University of London Careers Service community

You can learn from the career journeys of University of London Alumni by tuning into our Global Careers Calls podcast, which features interviews with people working in a range of sectors from across the world.

You can listen now to get inspired by hearing from EMFSS graduates and students developing and changing their careers in countries from Singapore to Uruguay. Once you join our community, sharing your story in a podcast interview is one of the many ways you can get involved and make the most of your EMFSS degree experience.



# Fast track to professional accreditation

Graduates on some EMFSS courses are eligible for exemptions when studying for professional accreditations.



The Institute of Chartered Accountants  
[apps.icaew.com/cpldirectory](https://apps.icaew.com/cpldirectory)



Chartered Institute of  
Management Accountants

Chartered Institute of  
Management Accountants  
[cimaglobal.com](https://cimaglobal.com)

**BSc Accounting and Finance graduates**

**BSc Finance graduates**



ACCA  
[accaglobal.com](https://accaglobal.com)



chartered  
accountant  
SINGAPORE

singapore QP

Chartered Accountant Singapore  
[sac.gov.sg](https://sac.gov.sg)



CPA Australia  
[cpaaustralia.com.au](https://cpaaustralia.com.au)

Please visit their websites for further information.

**Please note:** On 3 February 2024, the Accountancy Functions (Consolidation) Act 2022 ('Act') was published. The Act has merged the Accounting and Corporate Regulatory Authority ('ACRA'), the Accounting Standards Council ('ASC'), and the Singapore Accountancy Commission ('SAC') under one entity, which will henceforth take on the name of ACRA.

# Study Globally



## Opportunities to study abroad

As an EMFSS student, you study locally but join a worldwide community of students and alumni. You will also have access to a variety of international study opportunities that can enrich your academic experience, broaden your horizons, and enhance your CV.



### Rhea Sahajwani

Podar World College, India

**'My Summer School experience was amazing... I would love to come again!'**

## EMFSS Summer Session | *Powered by LSE Summer School*

The EMFSS Summer Session is your chance to complete part of your degree at LSE. Spending six weeks in London at LSE Summer School, you will:

- enjoy world-class LSE Summer School courses, taught by leading LSE faculty.
- enhance your career prospects through boot camps, workshops and panel events.
- connect with peers from across the world and discover London.

EMFSS students receive a 40 per cent discount on tuition fees for two Summer School courses. Completing these courses can earn you 30 credits towards your EMFSS degree.

Summer School runs between June and August each year.

## LSE General Course

The General Course is an opportunity for EMFSS degree students to experience life at LSE, attending lectures and classes for the period of a full academic year (September–July).

Students who have completed at least four EMFSS courses can apply for admission to the General Course (typically spending their third year of study in London). On successful completion of the year, students can transfer credit towards their EMFSS degree. For more information visit: [bit.ly/LSE\\_Global\\_Learning](https://bit.ly/LSE_Global_Learning)


## LSE Master's Study

LSE is a popular postgraduate destination for EMFSS graduates, with more than 25 currently completing master's study at LSE in the 2024–2025 academic year. Merit-based scholarships are available for EMFSS graduates. For more information, visit [lse.ac.uk/study-at-lse/graduate](https://lse.ac.uk/study-at-lse/graduate)

## Recognised Teaching Centres Exchange Programmes

Spend a year abroad at a different Teaching Centre within our global network, experiencing a new country whilst earning EMFSS credit.



A close-up portrait of a young woman with long, wavy brown hair and bright blue eyes. She is smiling broadly, showing her teeth. She is wearing a light purple or lavender button-down shirt. The background is a soft, out-of-focus light grey.

**‘The University of London  
gave me the best of  
both worlds – I had the  
opportunity to study a  
prestigious degree while  
staying in my home country.’**

**Anastasija Loncervic**

University of Belgrade  
(Faculty of Economics  
and Business), Serbia

A portrait of Dr Francesco Nava, a man with curly brown hair and light blue eyes, smiling slightly. He is wearing a grey V-neck sweater over a dark blue collared shirt. The background is a blurred indoor setting with green plants.

## Dr Francesco Nava

Academic Director of  
the University of London  
Programmes at LSE

‘As the Academic Director of the EMFSS degrees, my responsibilities include ensuring that the programmes reflect the latest developments in research, that any developments in LSE’s internal degrees are reflected in EMFSS courses, and that delivery of the EMFSS programmes is of the highest standard. Upon graduating from the EMFSS degrees, students will have the knowledge and the skills to succeed in a wide-range of graduate careers or in further academic study. Our aim is to grow through the EMFSS degrees a cohort of leaders that can make a positive difference worldwide.’



# EMFSS degree programmes



## Bachelor of Science (BSc) degrees

There are 12 EMFSS BSc degrees, typically based on undergraduate degrees taught at LSE.

BSc degrees consist of 360 credits (equivalent to 12 full courses) on the Standard Route. If you already hold a degree from an approved university, you may be admitted on the Graduate Route, which consists of 270 credits (equivalent to nine full courses). Standard Route degrees can be completed in 3–6 years and Graduate Route degrees in 2–6 years.

Courses are classified as 100, 200 or 300 level. These levels correspond to the standard three-year UK undergraduate degree.

For full information on programme structures, visit the relevant programme pages: [london.ac.uk/emfss](https://london.ac.uk/emfss) The EMFSS programme regulations also contain full

details on the rules that govern the choice of any course. Please see: [bit.ly/UoL-Regulations](https://bit.ly/UoL-Regulations)

## Available degrees

### Accounting, Banking and Finance programmes

- BSc Accounting and Finance
- BSc Finance

### Business and Management programmes

- BSc Business and Management
- BSc Management and Digital Innovation

### Data Science programme

- BSc Data Science and Business Analytics

### Economics programmes

- BSc Economics

- BSc Economics and Finance
- BSc Economics and Management
- BSc Economics and Politics
- BSc Mathematics and Economics

### International Relations and Politics programmes

- BSc International Relations
- BSc Politics and International Relations



## Professor Emma McCoy

LSE Vice President and Pro-Vice Chancellor

‘LSE brings a research expertise honed over more than 100 years to the programmes. LSE’s central vision is to educate for global impact and these programmes are a vital way through which we do this.’



# Accounting, Banking and Finance



## About the programmes

These degrees have been developed by LSE academics within the Departments of Finance and Accounting, both of which enjoy pre-eminent reputations for the excellence of their teaching and research.

The structure of the programmes allows you to choose optional courses in related areas which complement the core courses. This gives well-rounded coverage of the major issues and areas of modern financial and accounting theory and practice.

You will find that the courses have an international flavour, developed in consultation with academics and professionals throughout

Southeast Asia as well as the UK and other regions. This gives your study experience a truly global perspective, broadening your horizons as well as honing your understanding and critical analysis skills of key topics within finance, banking and accounting.

## Programmes offered in this area

### Degrees

- BSc Accounting and Finance
- BSc Finance

We also offer a Graduate Diploma in Finance. For more information on all available Graduate Diplomas, **see page 24.**

## Where can it lead?

Studying one of our Accounting, Banking and Finance programmes gives you the breadth of understanding and the quantitative skills you need to launch your career into the accounting or finance industry. Take your career in any number of directions, including accountancy, consulting, risk management, investment and commercial banking, sales and trading, or investment analysis and management.

**‘My EMFSS degree and the extensive career guidance provided by the University of London has inspired me to enter the dynamic world of economics.’**

**Rawan Megahed**

European Universities in Egypt (EUE), Egypt

# Business and Management



## About the programmes

These qualifications will prepare you for the demanding and competitive world of business and management. They combine a study of the core social science methodologies with the development of technical skills such as data analysis and presentation, which together provide practically-relevant knowledge and understanding.

You will learn about the political, social and cultural aspects of the business and management environment and acquire the ability to critically assess and challenge ideas, which will be beneficial throughout your career.

## Programmes offered in this area

### Degrees

- BSc Business and Management
- BSc Management and Digital Innovation

We also offer a Graduate Diploma in Management and a Graduate Diploma in Management and Digital Innovation. For more information on all available Graduate Diplomas, **see page 24.**

## Where can it lead?

The wide-ranging topics you'll study in our Business and Management programmes allow

you to springboard into a multitude of career paths. You can explore the world of consulting, capitalise on your quantitative training in accountancy or banking, or use your skills in any number of firms across the world in general management, marketing or information and innovation management.



### Tomiris Mukhamedgaliyeva

Singapore Institute  
of Management  
(SIM), Singapore

**'My EMFSS degree taught me everything I needed to know in order to excel in my chosen career.'**

# Data Science



## About the programme

The Data Science and Business Analytics degree provides the essential training in probability, statistics, mathematics and computing skills for the visualisation and analysis of large datasets, deriving valuable insights from data. The programme has a strong focus on methodology, but also on applications in finance and economics, as well as in business, marketing and beyond. Developed in response to the clamorous demand for data scientists across every business area, these programmes equip students with the knowledge and skills to capture the potential of big data and deliver transformational solutions to real-world problems.

## Programme offered in this area

### Degree

- BSc Data Science and Business Analytics

We also offer Graduate Diplomas in Data Science and Business Analytics. For more information on all available Graduate Diplomas, see page 23.

## Where can it lead?

With some analysts predicting a global shortage of data scientists lasting for the next 10 years, graduates from these programmes will be in demand from companies in fields from finance and e-commerce, to health, sport and retail. Students will also gain the knowledge and skills they need to progress in postgraduate study.

The programme balances methodology and application, providing the training needed for employment in numerous fields as a data scientist, analyst or similar.

Students will gain the ability to think critically and independently and develop a range of skills and knowledge that marks them out from the crowd.



## Dr James Abdey

Associate Professorial Lecturer, Department of Statistics

**‘Blending quantitative expertise with qualitative insights, graduates of this programme will be among the world’s first in this area due to undergraduate provision of such programmes being in its infancy. With strong employer demand for graduates with these skills, and a limited supply of graduates, students pursuing the degree will surely gain a competitive edge in the labour market.’**





## Professor Irini Moustaki

Department of Statistics, LSE

'Data science has recently experienced a tremendous growth due to the increasing amounts of large and complex data. As a student, you will be equipped with knowledge and tools in statistics, mathematics and computer science to address real-world challenges across multiple sectors, including finance, economics, marketing, insurance, health and beyond. The programme is designed to provide you with strong quantitative skills that are transferable to any substantive area of applications and to make you an independent data analyst who can use the latest statistical software and methods to provide data-driven solutions to business problems.'

My role as an academic coordinator is to provide academic direction for the Data Science and Business Analysis programme. In my job as Professor, I teach modelling for clustered and hierarchical data and survey methodology to postgraduate and undergraduate students from various degree programmes at LSE. For my research I develop statistical methodology applied to psychology, educational assessment, behavioural sciences and social sciences in general.'

# Economics

## About the programmes

Do you have a passion for making sense of the world's challenges? These programmes have been designed for those who wish to shape the future of business and society. After completing your studies you will emerge as a well-rounded economist, ready to interpret abstract questions into quantifiable solutions. Join alumni who have gone on to postgraduate studies at some of the world's most prestigious learning institutions and started meaningful careers.

The first year of the programme will give you an introduction to economics and develop your quantitative skills. During the second year you will explore more deeply the three core areas of microeconomics, macroeconomics and econometrics. In your final year, you will study higher-level economics courses but can also select from courses in other key subject areas to help shape the next step in your career.

**“Students choosing this programme want to stay close to home, but also get some international exposure and a degree that is widely recognised across the globe and well understood by employers.”**

**Dr Francesco Nava, Academic Director and Lecturer in Economics, Department of Economics, LSE**

## Programmes offered in this area

### Degrees

- BSc Economics
- BSc Economics and Finance
- BSc Economics and Management
- BSc Economics and Politics
- BSc Mathematics and Economics

We also offer a Graduate Diploma in Economics. For more information on all available Graduate Diplomas, **see page 24.**

## Where can it lead?

Many of our graduates have chosen to pursue careers in the financial sector, including positions involving economics research as well as those in banking or hedge funds. Others take up positions as economic or management consultants, join central banks, their home country's government economic service or international organisations.

A significant number choose to go on to graduate study, not just in economics but also in finance, management, development, economic history and other fields. We work to prepare our students who are aiming in this direction to understand the rewards of

engaging in economics research and the benefits of interacting with faculty and industry professionals who are leading economists.



**Jose Alejandro Otero Lopez del Solar**

**Universidad Privada Boliviana, Bolivia**

**‘Attending the LSE Summer School as an EMFSS scholarship student was one of the most rewarding experiences in my life.’**



# International Relations and Politics



## About the programmes

Both programmes develop skills in the analysis of key issues of contemporary society – for example, issues of order and stability, or relating to inequality and injustice. These skills include the ability to read critically and reflect on theories and practices, and to think creatively in order to produce well-crafted essays in your final examinations.

These qualifications allow you to develop an in-depth understanding of a key social science discipline and also take individual subjects from others, so you develop a breadth of knowledge and understanding of the social world.

The degrees allow you to engage with key theoretical ideas in the respective fields; to analyse different types of social and political problems of relevance to the world today; and to form balanced judgements.

## Programmes offered in this area

### Degrees

- BSc International Relations
- BSc Politics and International Relations

## Where can it lead?

These degrees develop intellectual and practical skills that are relevant across a wide range of career opportunities. Our graduates have found work with a huge variety of employers including multilateral and intergovernmental organisations, non-governmental organisations, banking and accounting services, local and national governments, educational establishments, and media and publishing companies.

Others have opted to continue studying these academic disciplines, or have transferred the skills they developed to other disciplines, such as law.



# Graduate Diplomas



## What are they?

The EMFSS Graduate Diplomas are bachelor's, or undergraduate, level qualifications that have been specifically designed for graduates who would like an additional bachelor's level qualification but do not want to commit to a full second degree. They are highly valued by students who want to acquire university-level education in a subject that is unrelated to their first degree, either to enhance their employment prospects or to proceed to a postgraduate degree or other advanced qualification.

Graduate Diploma programmes are designed so that they can be completed and examined in a single

year of full-time study. Students can remain registered for the Graduate Diploma for up to five years.

## Who are they for?

Graduate Diplomas are sometimes described as 'conversion' diplomas because they allow a student with an undergraduate qualification in one subject to proceed to a master's degree or other postgraduate qualification in another. It is important to understand the specific entry requirements of your desired master's programme.

Universities typically indicate what qualifications, in terms of courses and results achieved, they require, and students should confirm that the

Graduate Diploma could enable them to reach these standards. Mostly universities will want to see evidence of strong results in intermediate or advanced courses, and the structure of the Graduate Diplomas is built around this requirement.

In many subject areas, Graduate Diplomas may also have value in terms of professional development. For example, a business manager with a degree but no background in accounting or information systems can achieve a good understanding of the elements of these subjects in a short space of time.

## Available programmes

We currently offer the following Graduate Diplomas:

- Business Analytics
- Data Science
- Economics
- Finance
- Management
- Management and Digital Innovation
- Mathematics\*

\*Please note, the Graduate Diploma Mathematics is currently not offered at any Recognised Teaching Centre.

## Admission

All our Graduate Diplomas include 200 and 300-level courses which students will typically study from the outset. This means that students need to be sure that they are sufficiently qualified to undertake the programme. Given that some of the material covered within the programmes requires subject-specific knowledge, such as the materials typically taught in the first year of a bachelor's degree or equivalent, we have categorised the programmes into three groups:

- **Standard:** these are diplomas requiring only the general standard of an undergraduate degree or equivalent.
- **Standard Plus:** these are diplomas where students are advised to confirm that, through an undergraduate degree or

otherwise, they are familiar with our basic core subjects (economics, mathematics and statistics) to the level of a typical first-year undergraduate course. This is not a formal requirement but students who have no familiarity with these subjects from their first degree are advised to undertake some additional study. These are diplomas in **Business Analytics, Finance and Management**.

- **Technical:** these are diplomas for which a strong background in mathematics/statistics, going beyond the level of upper secondary education, is required. Applicants for these diplomas are expected to have a strong understanding of mathematics and are advised also to have some familiarity with economics. These are diplomas in **Data Science and Economics**.



**Daiki Oue**

Musashi University, Japan

**'My EMFSS degree experience was greatly enhanced by having the privilege of interacting with peers from a variety of backgrounds.'**

**YAVUZ'S JOURNEY**  
STUDY LOCALLY. THINK GLOBALLY.

**BSC ECONOMICS AND FINANCE**  
Istanbul Bilgi University

**DEGREE HIGHLIGHT**  
Yavuz completed a year abroad at LSE as a recipient of the prestigious John C. Phelan and ISH-LSE scholarships.

**DESTINATION**  
MSc Data Science, LSE

**APPLY NOW**

# Certificate of Higher Education in Social Sciences (CHESS)

## What is CHESS?

Do you have the skills and motivation to study at degree level but your qualifications don't currently meet the BSc entry requirements? Are you looking for a qualification that can be an academic pathway to degree success? Then CHESS may be the right option for you.

## An Academic Pathway to the EMFSS BSc Programmes

CHESS is a qualification in its own right that can be studied at one of our Recognised Teaching Centres.

In addition to this, it can serve as an academic pathway you can follow to study BSc programmes in Economics, Management, Finance and the Social Sciences.

If you intend to go on to an EMFSS BSc after completing CHESS, your Recognised Teaching Centre will provide guidance and make sure the courses you study for CHESS are available on the degree that interests you.

This will ensure that you receive credit for the courses you have passed, allowing you to progress on to one of the degrees listed in the prospectus, subject to

the requirements for transfer to BSc found in the EMFSS Programme Regulations.

## Features of the CHESS

You take the same courses and sit the same examinations as those offered to BSc students.

- You can complete the CHESS in a minimum of one year and a maximum of three.
- You must pass 120 credits (equivalent of four full courses) in order to be awarded the CHESS.
- You have the flexibility of up to three reattempts.

## Further information

Universities in the UK, including LSE, will consider you for entry into the second year of a degree if you pass CHESS with very high marks and have taken the appropriate courses. You will need to apply through UCAS, stating you are applying for second-year entry. Please note that this is extremely competitive.

For full details on how to meet our entrance requirements, including further information on our general entrance requirements, please visit: [london.ac.uk/courses](https://london.ac.uk/courses)





# Entrance requirements

Please note: if applying to a Recognised Teaching Centre, you should contact them directly for information on their admission criteria: [bit.ly/recognised-centres](https://bit.ly/recognised-centres)

For full details on how to meet our entrance requirements, please visit: [london.ac.uk/courses](https://london.ac.uk/courses)

	CHES	BSc Degree Standard Entry Route	BSc Degree	Graduate Diplomas
<b>Internet access</b>	✓ Required	✓ Required	✓ Required	✓ Required
<b>Age requirement</b> You must normally* be:	18 years or older before 31 December in the year you first register with the University	at least 17 years old	at least 17 years old	at least 17 years old
<b>English</b> You must provide proof of competence in English which is acceptable to the University (a test of proficiency may be required).	✓ Required	✓ Required	✓ Required	✓ Required
<b>Mathematics</b> You must demonstrate competence in mathematics at least equivalent to UK GCSE/ GCE O level in a Mathematical subject at grade C or above.**	✓ Required	✓ Required	✓ Required	✓ Required

	CHES	BSc Degree Standard Entry Route	BSc Degree	Graduate Diplomas
<b>Qualifications</b> <b>Note:</b> There are many other qualifications, both from the UK and overseas, that the University of London accepts as satisfying the entrance requirements (for more information on these please see: <a href="https://bit.ly/Gen-Entry-Quals">bit.ly/Gen-Entry-Quals</a> ).	As well as the University's requirements listed here, you must also meet our school leaving requirements.	As well as the University's requirements listed here, you must meet our General Entrance Requirements. For full details on how to meet our entrance requirements, including further information on our General Entrance Requirements, UK GCSE/GCE O level equivalents and English language requirements you should visit: <a href="https://london.ac.uk/courses">london.ac.uk/courses</a>	You must hold an acceptable bachelor's or master's degree which is considered at least comparable to UK FHEQ Level 6 or above; <b>OR</b> An acceptable undergraduate or postgraduate qualification which is considered at least comparable to UK FHEQ Level 6 or above, provided this is at least one-year full time in duration; <b>OR</b> Professional qualifications and professional memberships will be considered on an individual basis.	You must hold an acceptable bachelor's degree*** <b>OR</b> an acceptable master's degree (or any other appropriately accredited Level 7 award) provided this is at least one-year full time in duration; <b>OR</b> an acceptable Level 5 or Level 6 award (such as a HND or Graduate Certificate) provided this is at least one-year full time in duration, <b>plus</b> evidence of at least two years' relevant work experience; <b>OR</b> an acceptable Level 5 or Level 6 award (such as a HND or Graduate Certificate) provided this is at least one year full-time in duration and has been awarded in a relevant field of study.

\* Applications will be considered from applicants who do not meet the normal minimum age requirement for admission. Each application will be considered on an individual basis, and the decision taken at the discretion of the University of London.

\*\* Applicants applying to the BSc Mathematics and Economics and BSc Data Science and Business Analytics degrees must demonstrate competence in mathematics at least equivalent to UK GCE A level at Grade E or above.

\*\*\* Applicants applying for the Graduate Diplomas in Economics and Data Science must have mathematics at degree level standard, for further details please visit: [london.ac.uk/emfss](https://london.ac.uk/emfss)



# Further information



## How to apply

This prospectus provides a summary of information only. We strongly recommend that you visit our website for more detailed information on these programmes before making an application. Visit: [london.ac.uk/emfss](https://london.ac.uk/emfss)

## Recognition of Prior Learning (RPL), Standard Route only

You may apply for RPL from up to four full 100 courses. You are advised to apply as early as possible if you want to claim RPL exemption from a course. For further information please see: [bit.ly/emfss\\_RPL](https://bit.ly/emfss_RPL)

For the Graduate Route you can apply for RPL exemption from one full 100 course.

## LSE Master's Scholarship for EMFSS Graduates

Are you thinking about studying a master's degree after you graduate? Would you like to study in the heart of London at a world-leading university for the social sciences? Then you may want to consider LSE for your postgraduate studies. EMFSS students who have been accepted onto a master's degree at LSE can apply for a partial scholarship, which is awarded on the basis of academic merit and contributes towards tuition fees.

## Fees

The total fee payable to the University of London for 2025–2026 will be published on our website once confirmed. On average, fees incur a five per cent year-

on-year increase. For the latest information on programme fees please visit: [london.ac.uk/fees](https://london.ac.uk/fees)

In addition to the fees payable to the University, you should also budget for the cost of tuition at a Recognised Teaching Centre (if applicable) and the fee charged by your local examination centre.

**Please note:** student fees shown on our website are net of any local VAT, Goods and Services Tax (GST) or any other sales tax payable by the student in their country of residence. Where the University is required to add VAT, GST or any other sales tax at the local statutory rate, this will be added to the fees shown during the payment process. For students resident in the UK, our fees are exempt from VAT.

## Contact us

If you have any questions or would like information about any other programmes we offer, please contact our Student Advice Centre at the address below.

University of London  
Senate House, Malet Street  
London WC1E 7HU  
United Kingdom  
[london.ac.uk/enquiries](https://london.ac.uk/enquiries)



The information contained in this prospectus was correct at the date of publication but may be subject to change. The University does not intend by publication or distribution of this prospectus to create any contractual or other legal relation with applicants, registered students, their advisers or any other persons. For the most up-to-date information, please visit our website.

Published by University of London.

Copyright © University of London,  
January 2025.

For further information on the range of programmes we offer,  
please visit our website ([london.ac.uk](http://london.ac.uk)) or contact us at:

University of London  
Senate House, Malet Street  
London WC1E 7HU  
United Kingdom

Telephone enquires: +44 (0)20 7862 8360

Online enquires: [london.ac.uk/enquiries](http://london.ac.uk/enquiries)



This material is available in alternative formats upon request.  
Please contact: [special.arrangements@london.ac.uk](mailto:special.arrangements@london.ac.uk)

Follow us on:



[london.ac.uk/facebook](http://london.ac.uk/facebook)



[london.ac.uk/flickr](http://london.ac.uk/flickr)



[london.ac.uk/instagram](http://london.ac.uk/instagram)



[london.ac.uk/issuu](http://london.ac.uk/issuu)



[london.ac.uk/linkedin](http://london.ac.uk/linkedin)



[london.ac.uk/x](http://london.ac.uk/x)



[london.ac.uk/youtube](http://london.ac.uk/youtube)

[london.ac.uk/emfss](http://london.ac.uk/emfss)