



THE LONDON SCHOOL  
OF ECONOMICS AND  
POLITICAL SCIENCE ■

The General Course

27 – 29 September 2024

# Cumberland Lodge Weekend

## Windsor Great Park

The annual Cumberland Lodge academic retreat is a wonderful opportunity to spend the weekend with your fellow General Course students. The weekend features a packed schedule of academic talks and activities. Drawn from across LSE and beyond, our guest speakers will inspire lively discussion and debate on topics that you are unlikely to encounter in your undergraduate courses

Speakers: Dr Patrick Gill-Tiney  
Professor Peter Trubowitz  
Dr Fiona Gogescu  
Dr Fabio Battaglia

For more information, visit the  
General Course student webpages  
[#LSEStudyAbroad](#)



# Friday 27 September 2024

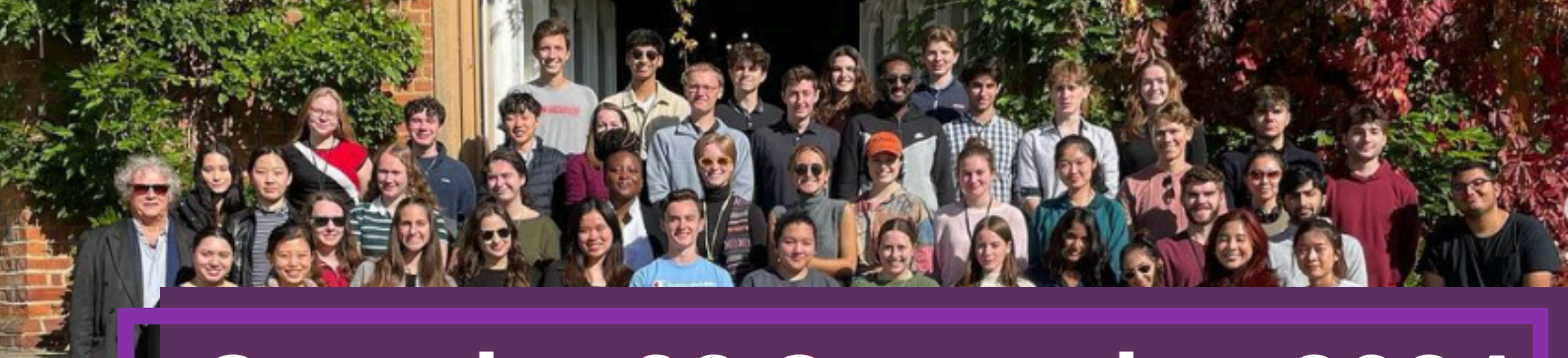
3:00pm                      Meet coach outside MAR Building on  
Lincoln's Inn Fields

6:00pm                      Reform of the UN Security Council  
*Dr Patrick Gill-Tiney*

**7:30pm                      Dinner**

8:30pm                      Welcome from Cumberland Lodge

8:45pm                      Icebreaker Activities



# Saturday 28 September 2024

**8:00am**

**Breakfast starts**

**9:30am**

US-China relations: from rapprochement  
to rivalry

*Professor Peter Trubowitz*

**11:00am**

**Coffee Break**

**11:30am**

High stakes testing and understandings  
of educational success

*Dr Fiona Gogescu*

**1:00pm**

**Lunch**

followed by free time

**3:30pm**

**Afternoon Tea**

**6:00pm**

To GDP or not to GDP? Understanding the  
meaning behind growth

*Dr Fabio Battaglia*

**7:30pm**

**Dinner**

followed by a pub quiz



# Sunday 29 September 2024

8:00am

Pack up and Check out of rooms  
(by 9am latest)

**8:10am**

**Breakfast starts**

10:00am

Free time (after breakfast) or  
Royal Chapel

**1:30pm**

**Lunch**

2:30pm

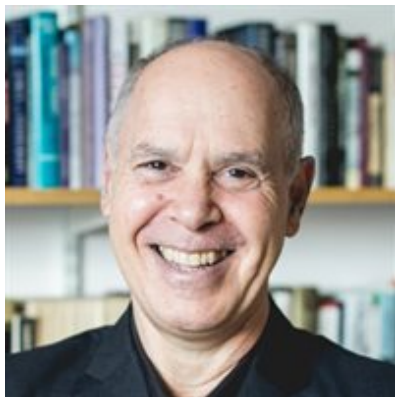
Evaluation Session

3:00pm

Depart Cumberland Lodge

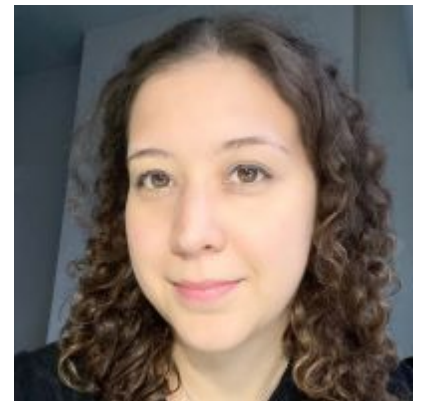


**Dr Patrick Gill-Tiney** is an LSE Fellow in International Relations in the Department of International Relations. Patrick's research examines major power relations, interstate conflict, the UN Security Council, and peacekeeping. At the LSE in 2024-25 Patrick will contribute to the teaching of IR205 International Security and IR412 International Institutions.



**Professor Peter Trubowitz** is Professor of International Relations and Director of the Phelan United States Centre at the London School of Economics and Associate Fellow at Chatham House. He writes and comments frequently on international affairs and American politics. His most recent book is *Geopolitics and Democracy: The Western Liberal Order from Foundation to Fracture* (Oxford 2023).

**Dr Fiona Gogescu** joined the Department of Social Policy as an LSE Fellow after completing her PhD in the same department. Her doctoral thesis employed mixed methods to explore the relationship between processes of educational stratification and understandings of meritocracy in Germany and Romania. Her current work explores the way in which elite students from different countries conceptualise educational privilege and educational success. She teaches Education Policy, with a focus on how different forms of educational disadvantage influence educational achievement.



**Dr Fabio Battaglia** is an LSE Fellow at the Department of Social Policy and CIVICA Academic Advisor at Sciences Po. He earned his doctorate degree from the University of Edinburgh and received multiple awards, including the Best Dissertation Award by the International Society for Quality-of-Life Studies. Fabio's research investigates whether well-being (or "beyond GDP") metrics are used in policymaking and if not why. Concurrently, another part of his research focuses on the policymaking process more generally in the attempt to elaborate a theory of policy change.