



THE LONDON SCHOOL
OF ECONOMICS AND
POLITICAL SCIENCE



Department of Statistics
**Current Students
Q&A session**



THE LONDON SCHOOL
OF ECONOMICS AND
POLITICAL SCIENCE ■

Plan for today:

- Sarah McManus – Introduction to the role of MSc Programmes Manager and the Department
- Qurat ul-Ain, MSc Data Science - 5 minutes
- Shavya, MSc Data Science - 5 minutes
- Kaan, MSc Data Science - 5 minutes
- Tian, MSc Statistics (Research) – 5 minutes
- Leonie, MSc Statistics (Social Statistics) - 5 minutes
- Q&A



THE LONDON SCHOOL
OF ECONOMICS AND
POLITICAL SCIENCE

Faculty and Admin Team (Professional Service Staff)

We are a close-knit and collegiate group of academics and administrators.

See our 'People' and 'Research' webpages for information about who we are and what we work on.

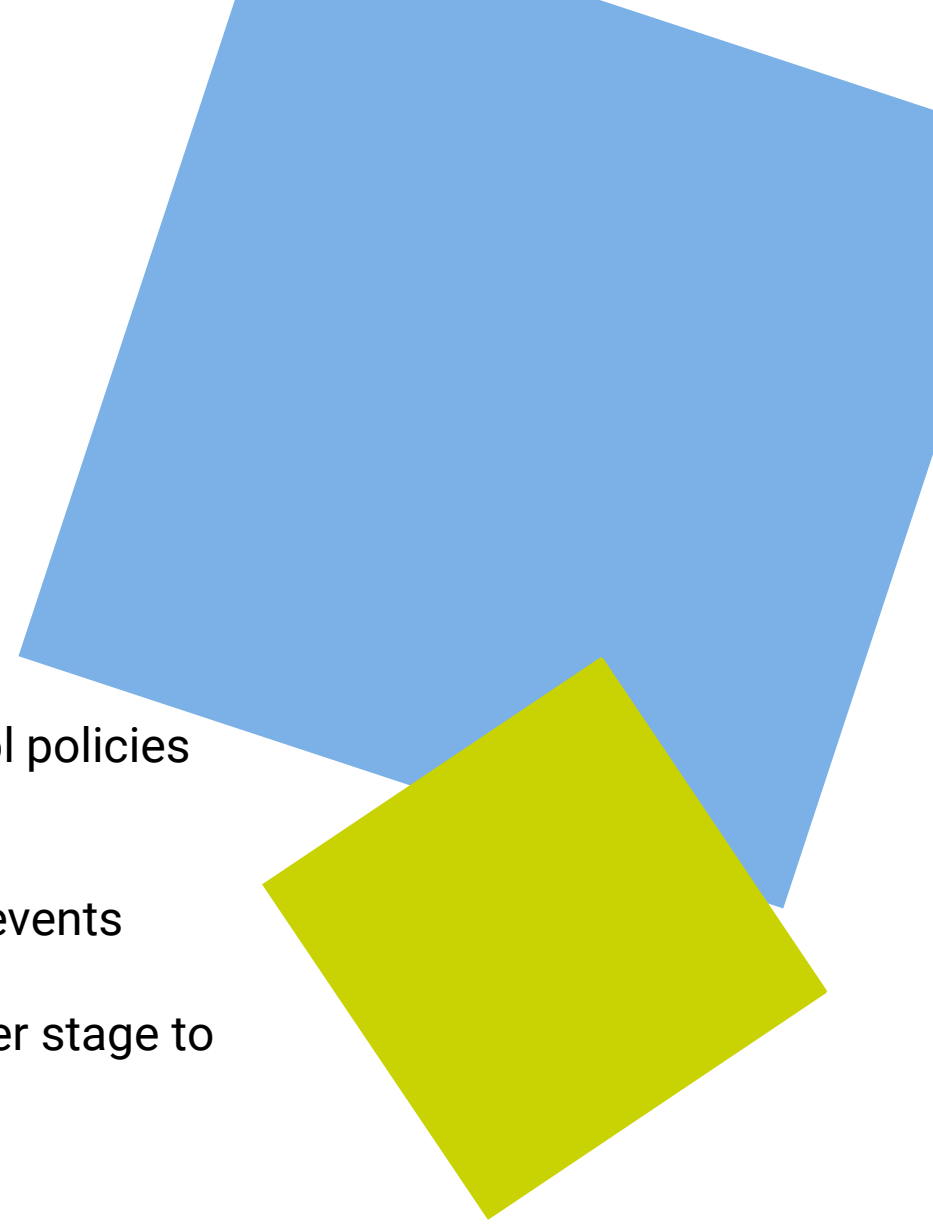




THE LONDON SCHOOL
OF ECONOMICS AND
POLITICAL SCIENCE ■

How can the Programme Manager support me?

- Answer non-academic queries related to Department and School policies e.g. well-being, exams etc
- Co-ordination of Staff-student liaison committee and other key events
- General support throughout your LSE journey – from offer-holder stage to graduation

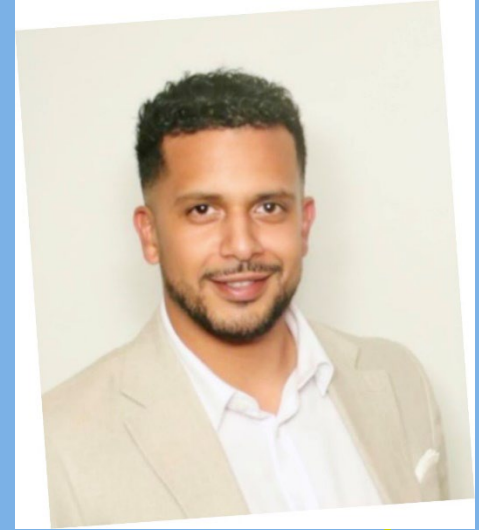




THE LONDON SCHOOL
OF ECONOMICS AND
POLITICAL SCIENCE ■

Franks Reyes-Sarria – Department Student Adviser

- Here to support you during your time at LSE, helping navigate advice and support services available
- Discuss options and support available if your studies or assessments are affected in any way
- 30-minute appointments (in-person or online), plus online drop-in





THE LONDON SCHOOL
OF ECONOMICS AND
POLITICAL SCIENCE ■

How can LSE support me?

Check out:

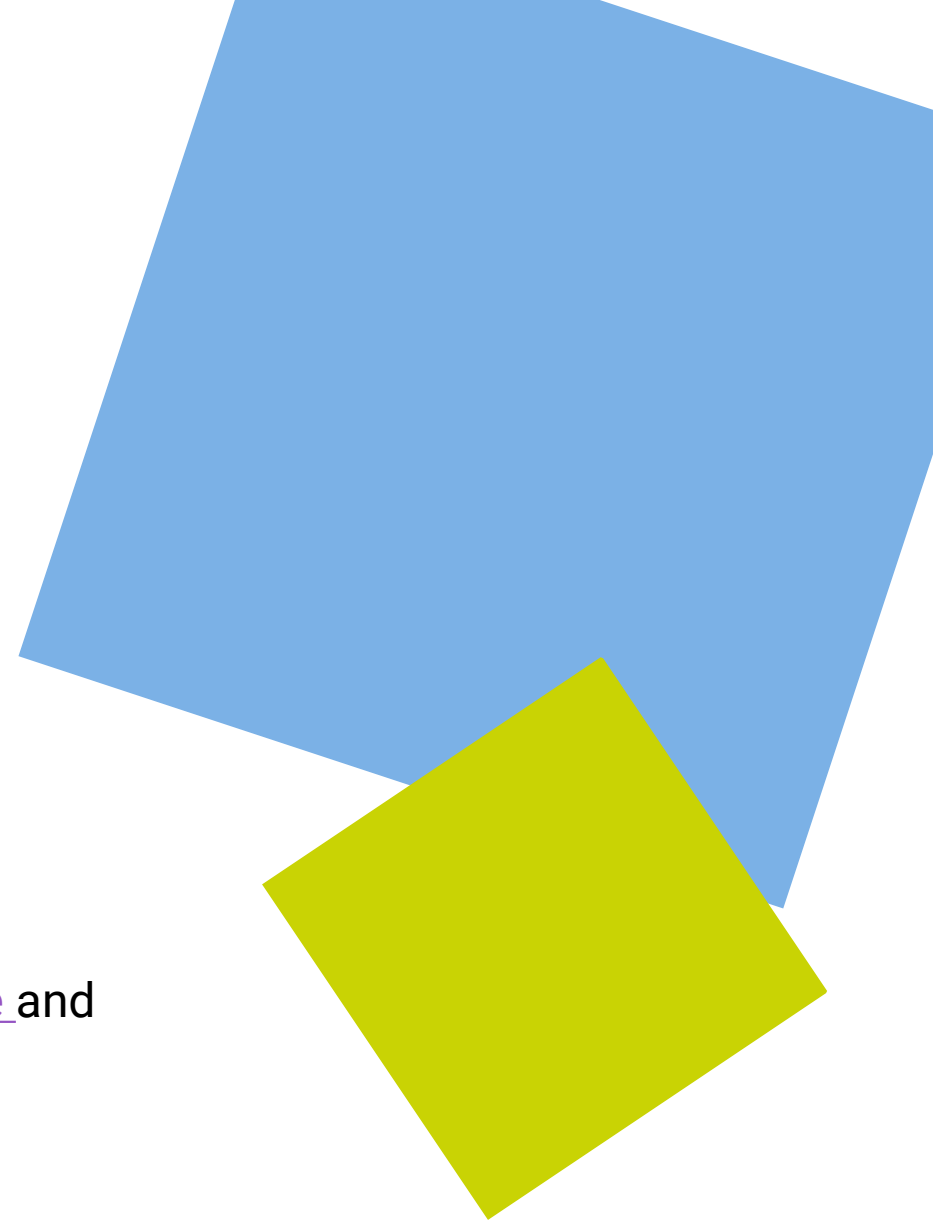
[Careers](#)

[LSE LIFE](#) (workshops and one-to-one advice on academic matters)

[Student union](#)

[General student support](#) (well-being, financial etc)

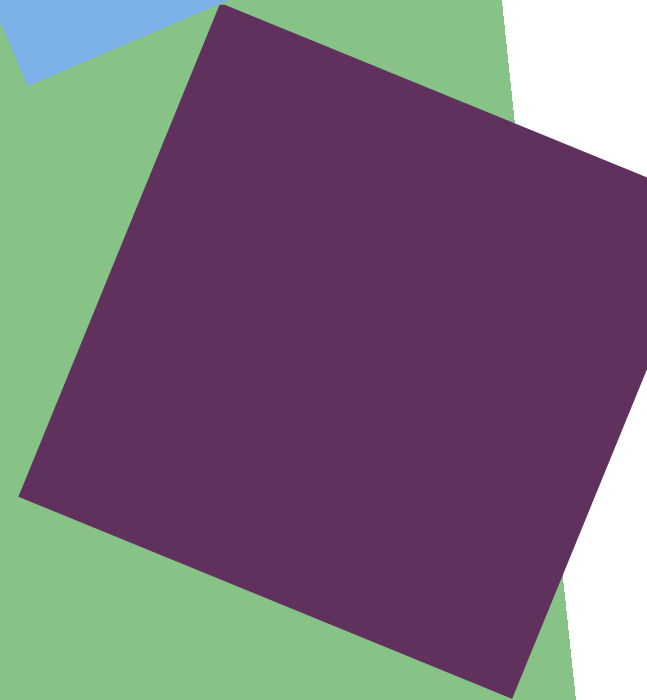
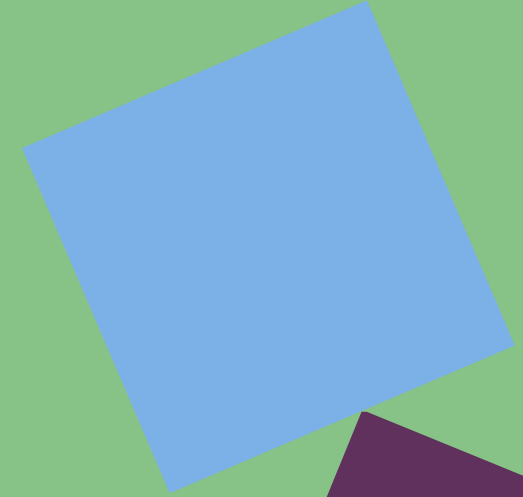
Find out more by exploring the Department's [Offer Holders website](#) and reading the [Graduate Offer pack](#).





THE LONDON SCHOOL
OF ECONOMICS AND
POLITICAL SCIENCE ■

Qurat-ul-Ain – MSc Data Science





THE LONDON SCHOOL
OF ECONOMICS AND
POLITICAL SCIENCE ■

Joining LSE on Chevening Scholarship





THE LONDON SCHOOL
OF ECONOMICS AND
POLITICAL SCIENCE

Welcome Week Events





THE LONDON SCHOOL
OF ECONOMICS AND
POLITICAL SCIENCE ■

Support in Achieving Personal Objectives

- Startup Competitions
- PHD
- Careers Fairs





THE LONDON SCHOOL
OF ECONOMICS AND
POLITICAL SCIENCE ■

Academic Representative

- Staff-Student Liaison Committee
- Cumberland Lodge International Student Conference





THE LONDON SCHOOL
OF ECONOMICS AND
POLITICAL SCIENCE ■

Some Tips

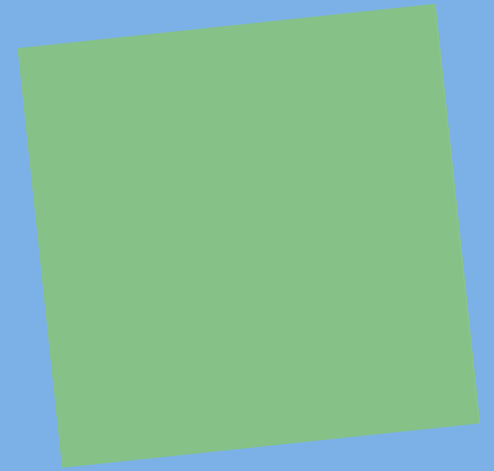
- Time Management
- Focus on long-term ambitions
- Homesickness/Cultural Shocks
- Imposter Syndrome
- Networking/Building Connections





THE LONDON SCHOOL
OF ECONOMICS AND
POLITICAL SCIENCE ■

Shavya – MSc Data Science





THE LONDON SCHOOL
OF ECONOMICS AND
POLITICAL SCIENCE ■

Shavya

Journey —

- BSc (Hons) Statistics, University of Delhi
- MSc Data Science, LSE (London School of Economics)

Work Experience —

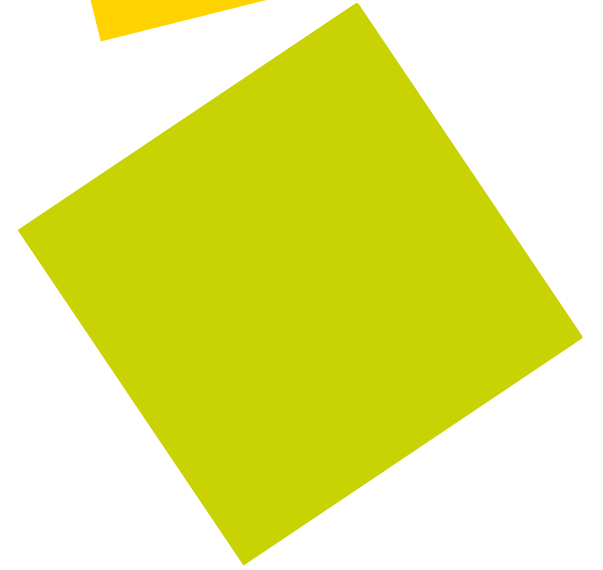
- Associate Consultant, T-sigh Consulting
- Data Analyst, MarketPulse India
- Data Analyst, SENDAPP (E-commerce)

My Career—

2.5 years' experience in data analytics and marketing mix modelling across consulting and consumer-focused projects.

Hobbies —

- Reading books
- Watching documentaries on global affairs, business, and society
- Playing chess and solving logic puzzles



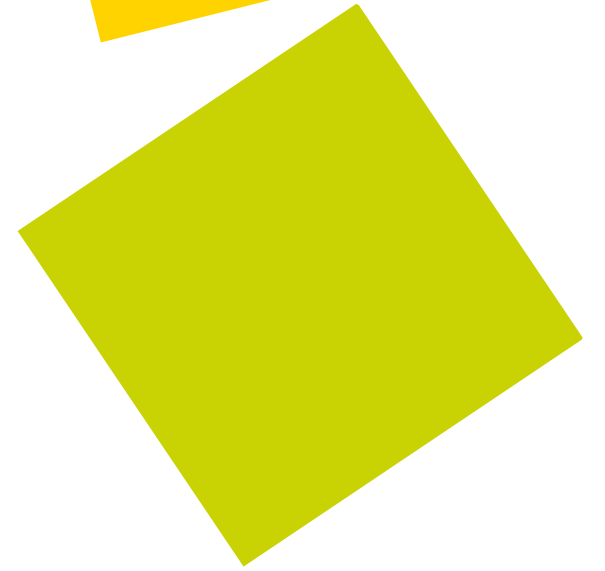


THE LONDON SCHOOL
OF ECONOMICS AND
POLITICAL SCIENCE ■

Shavya

My experience as an LSE student

- Departmental Networking & Friendships
- Extracurricular Opportunities & Support (Practitioner Challenge, Competitions)
- Powerful Mix of Theory and Application
- LSE Career Support & Resources (Interview Practice Sessions, resources to help prepare for technical rounds)





THE LONDON SCHOOL
OF ECONOMICS AND
POLITICAL SCIENCE ■

General Advice:

Be Open to Opportunities:

Always stay open to trying something new—sign up for department events and networking sessions.

Time Management is Key:

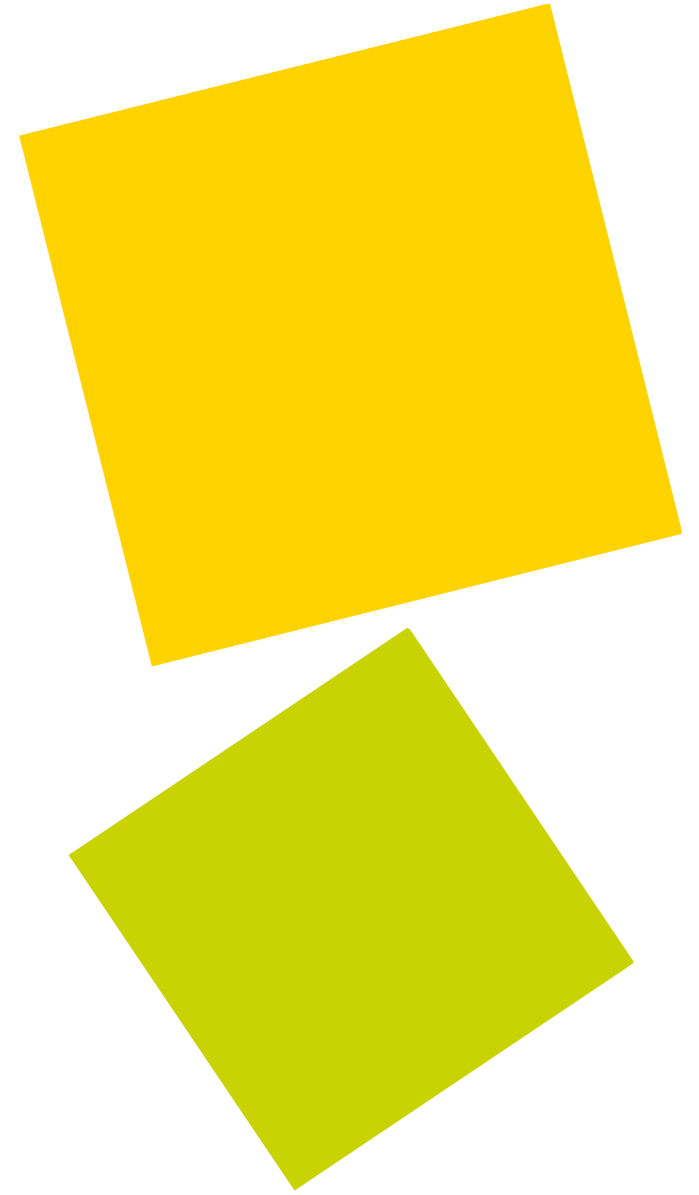
Ensure you balance studies with personal life—plan ahead to avoid last-minute stress.

Utilize Available Resources:

- Attend office hours with professors and lecturers to clarify doubts.
- Seek peer support for collaborative learning.

Be Proactive in Course Selection:

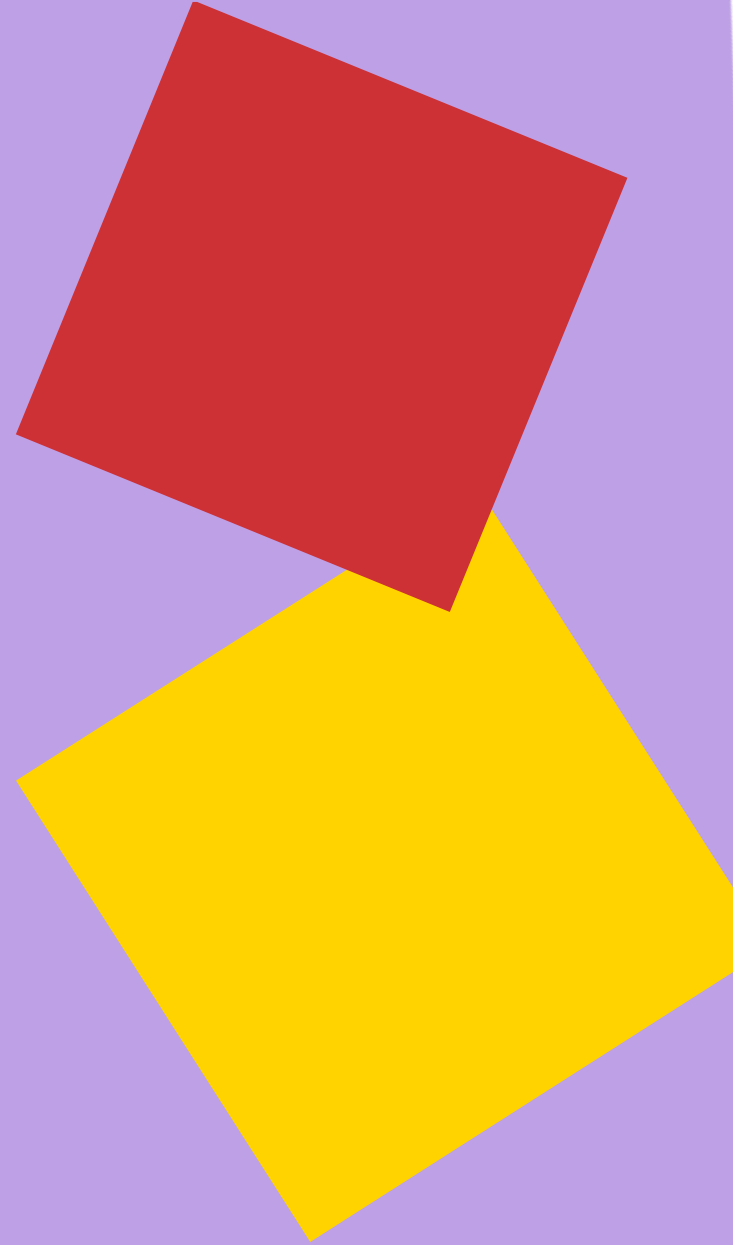
- Visit course details before the semester starts to understand expectations.
- Reach out to LSE alumni who've taken the courses to get insights—*don't underestimate the power of the LSE alumni network.*





THE LONDON SCHOOL
OF ECONOMICS AND
POLITICAL SCIENCE ■

Kaan – MSc Data Science

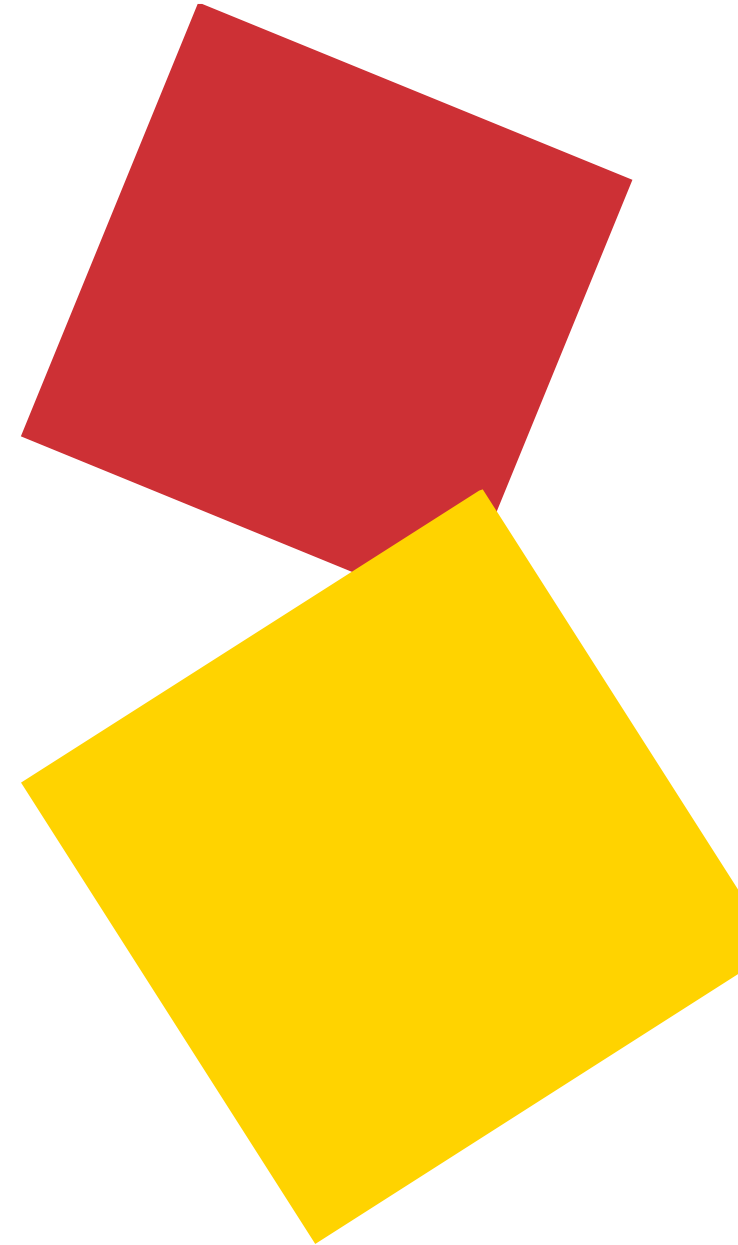




THE LONDON SCHOOL
OF ECONOMICS AND
POLITICAL SCIENCE ■

Yes, it all started with a dream

- 2023/2024 General Course
- John C. Phelan Scholarship



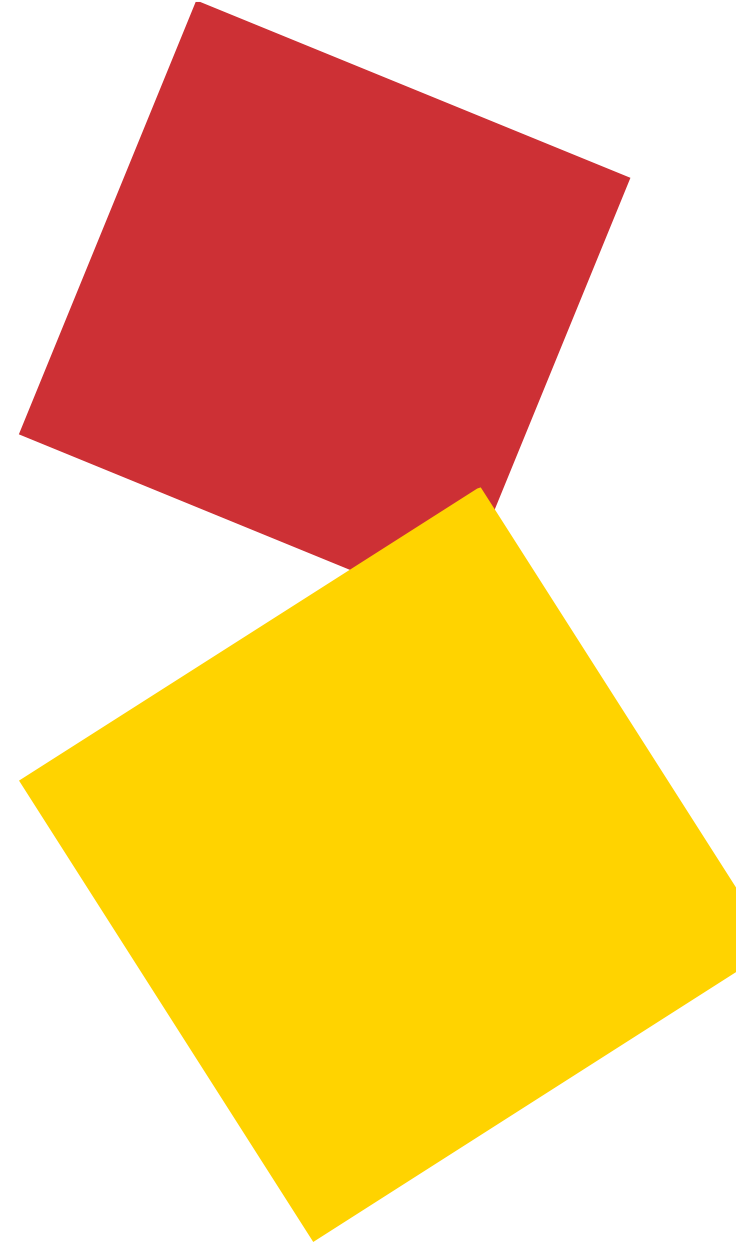


THE LONDON SCHOOL
OF ECONOMICS AND
POLITICAL SCIENCE ■

LSE: London School of «Ensembling»



- %5 Percent Acceptance Rate
- Brilliant cohort, great connections!
- Theoretical and Social Extremes





THE LONDON SCHOOL
OF ECONOMICS AND
POLITICAL SCIENCE ■

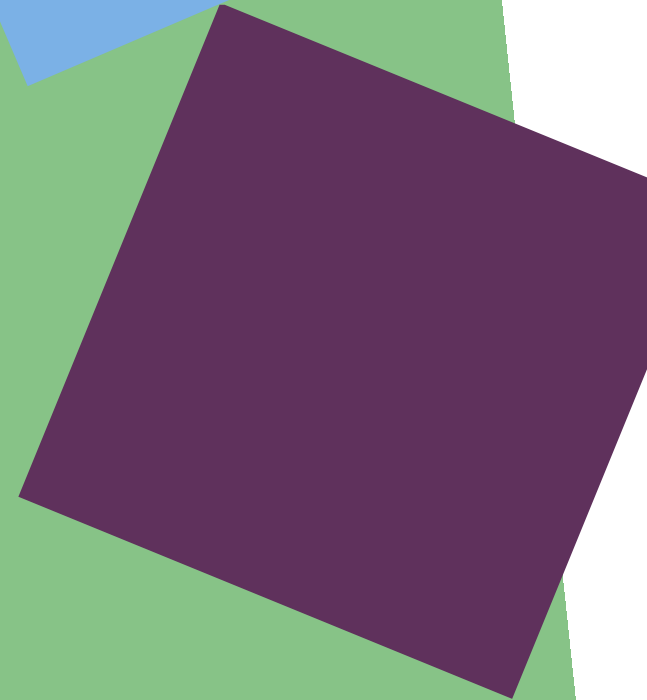
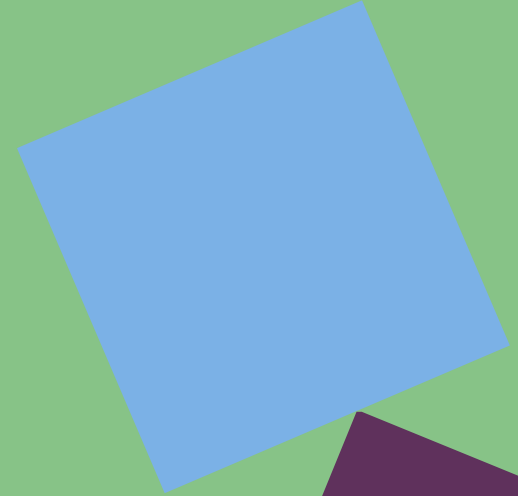
A city with Endless Opportunities





THE LONDON SCHOOL
OF ECONOMICS AND
POLITICAL SCIENCE ■

Tian – MSc Statistics (Research)





THE LONDON SCHOOL
OF ECONOMICS AND
POLITICAL SCIENCE ■

Courses

Longer course duration: September 2025 – September 2026

Fewer courses: ST499 Dissertation counts as a full unit

Balanced curriculum: Covers both statistics and data science (Methodology courses as well)

Courses information:

<https://www.lse.ac.uk/resources/calendar/programmeRegulations/taughtMasters/2024/MScStatisticsResearch.htm>



THE LONDON SCHOOL
OF ECONOMICS AND
POLITICAL SCIENCE ■

Dissertation (ST499)

Explore a diverse range of research topics (E.g. Time Series, Machine Learning, Bayesian, Financial Statistics, etc.)

Dive deep into a specialized area beyond lectures

Receive one-to-one guidance from expert professors

Develop self-discipline and strong time management skills

Gain valuable insights into PhD-level research



THE LONDON SCHOOL
OF ECONOMICS AND
POLITICAL SCIENCE ■

Uni Life & Future Path

Well-rounded preparation for both industry careers and PhD research

Flexible schedule with opportunities to engage in societies, student leadership, internship, RA, and extracurriculars

Hands-on experience through Datathons, Trading Competitions, Quant Games, and more

Intensive yet efficient one-year program



THE LONDON SCHOOL
OF ECONOMICS AND
POLITICAL SCIENCE ■

Leonie – MSc Statistics (Social Statistics)

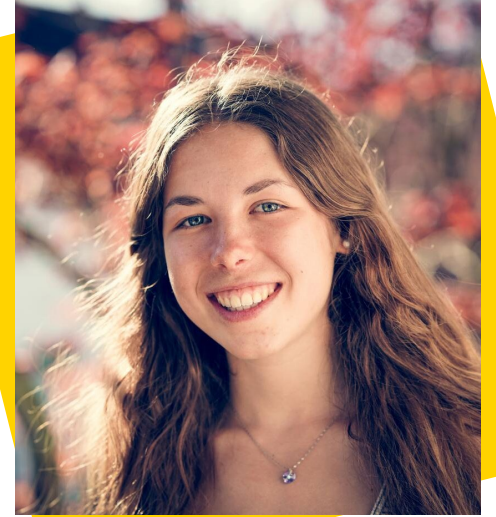




THE LONDON SCHOOL
OF ECONOMICS AND
POLITICAL SCIENCE ■

About Me

- 23 years old
- MSc Social Statistics student at LSE
- Undergraduate degree in Management & Economics (Wirtschaftswissenschaften) at Ulm University in Germany
- Focused on Business Analytics, Data Science, and Statistical Methods during my undergraduate studies
- Went straight from my undergraduate to my master's without working full-time in between

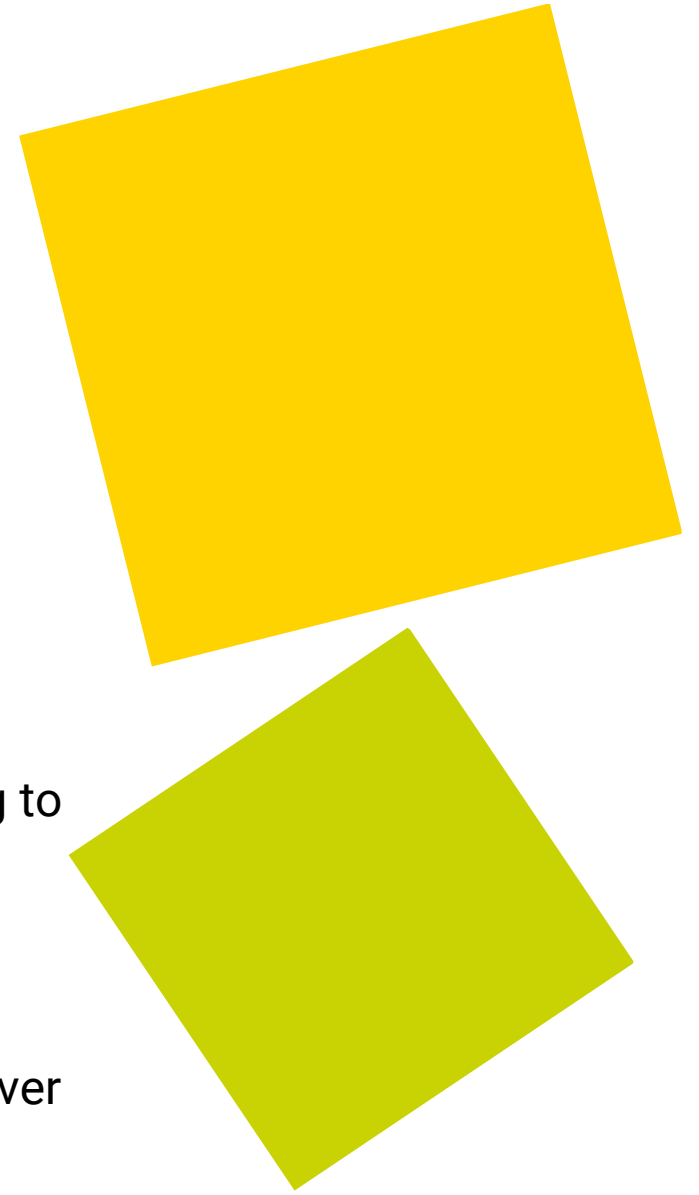




THE LONDON SCHOOL
OF ECONOMICS AND
POLITICAL SCIENCE ■

Being a Student in the Department of Statistics

- Wide range of modules to choose from – you can shape your degree depending on your interests (e.g. theoretical vs. applied statistics)
- Good balance between exams and project-based assessments, helping to build both theoretical understanding and practical skills
- Supportive department – you'll be assigned an academic mentor with whom you'll have regular meetings and can discuss things like failed exams, module choices outside the standard list, or general concerns
- Very international and diverse environment – students come from all over the world and bring different academic and professional backgrounds





THE LONDON SCHOOL
OF ECONOMICS AND
POLITICAL SCIENCE ■

Advice

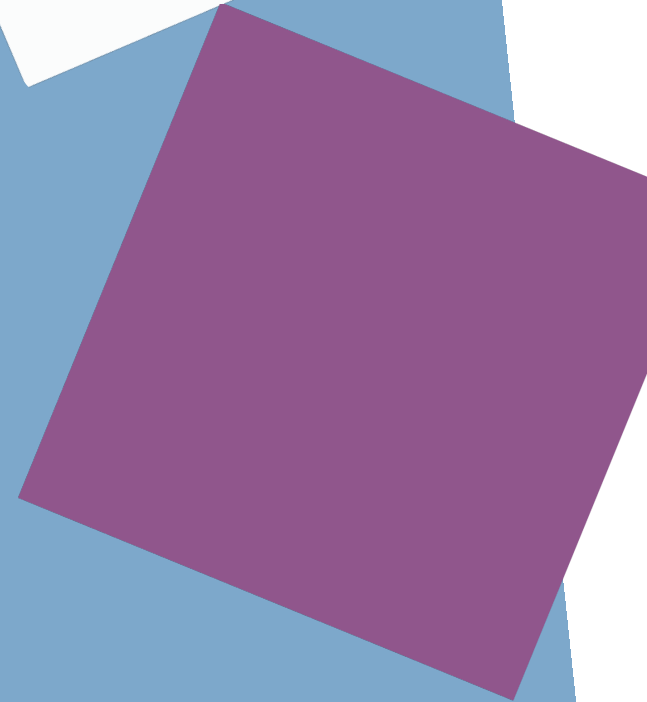
- Don't underestimate exams – lectures may feel manageable, but exams often require applying concepts to unfamiliar problems
- Start preparing early, especially for the January exam season, so you can enjoy some free time over Christmas
- Take advantage of LSE events organized by the department, LSE Life, LSE Careers, the Student Union, etc. This is what makes LSE special
- Finding a flat is easier if you look for flat mates first and then apply for a place together
- To save money:
 - Get the 16-25 Railcard (£35/year) if you plan to explore the UK
 - Use meal deals for lunch to cut down on costs
 - If you drink a lot of coffee, consider a Pret or Leon subscription





THE LONDON SCHOOL
OF ECONOMICS AND
POLITICAL SCIENCE ■

Questions?





THE LONDON SCHOOL
OF ECONOMICS AND
POLITICAL SCIENCE ■

Getting In Touch

Sarah McManus, MSc Programmes Manager (Queries about Department or your programme) stats-msc@lse.ac.uk

Please feel free to contact the Programme Director for your programme <https://www.lse.ac.uk/statistics/contact-us/programme-directors>

LSE Graduate Admissions (Queries about your offer, such as conditions, documentation) <https://www.lse.ac.uk/study-at-lse/Graduate/Contact-Graduate-Admissions>