

LSE

THE LONDON SCHOOL
OF ECONOMICS AND
POLITICAL SCIENCE



THE  TIMES
THE SUNDAY TIMES

**GOOD
UNIVERSITY
GUIDE
2025**

**UNIVERSITY
OF THE
YEAR**

THE  TIMES
THE SUNDAY TIMES

**GOOD
UNIVERSITY
GUIDE
2025**

**1 RANKED FIRST
IN THE UNITED
KINGDOM**

Start your journey to becoming

#partofLSE

UNDERGRADUATE GUIDE 2026



Why LSE?

OVER 12,000 STUDENTS

STUDENTS FROM 140+ COUNTRIES

UNIVERSITY OF THE YEAR**

ONE CENTRAL LONDON CAMPUS

OVER 40 UNDERGRADUATE PROGRAMMES

PART OF THE RUSSELL GROUP

20 NOBEL PRIZE WINNERS

SINGLE FACULTY =

FACULTY OF
SOCIAL SCIENCES

AVERAGE MEDIAN SALARY FOR UNDERGRADUATES

AFTER GRADUATION = **£37,853***

(Data aggregated from HESA surveys 2021/22.
See [page 4](#) for further details*.)

** *The Times* and *Sunday Times: Good University Guide 2025.*

lse.ac.uk/at-a-glance



Contents

Welcome 3

Meet our departments 4

Accounting	7
Anthropology	9
Economic History	11
Economics	13
Finance	15
Geography and Environment	17
Government	19
International History	21
International Relations	23
Language Centre	25
Law School	27
Management	29
Mathematics	31
Philosophy, Logic and Scientific Method	33
Psychological and Behavioural Science	35
Social Policy	37
Sociology	39
Statistics	41

LSE100 42

London life 44

Campus life 46

Accommodation 51

Support and resources 52 for students

Study abroad 55

Funding your studies in London 56

How to apply 58

Assessing your application 60

Discover LSE 62





Welcome



LSE is a special institution. Among the world's leading universities for the study of the social sciences, it attracts extraordinarily talented students from over 140 countries. Students are taught by an equally multinational faculty of scholars at the forefront of the social sciences: experts whose research is relied upon, and whose advice is regularly sought, by governments, businesses, and media. As one of the most international universities on Earth, we thrive on diversity, open discussion, tolerance, and mutual respect – core values to which we're deeply committed.

Location matters, too, and LSE takes full advantage of its position in the heart of London, one of the world's most cosmopolitan and vibrant cities. One consequence is to make LSE a unique forum for public debate, able routinely to attract heads of state, top global officials, corporate leaders, Nobel laureates, and social activists to participate in our vibrant public events programme.

We never rest on our laurels, however, and seek continuously to respond to the fast changing world in which we now live. On sustainability, the advance of new technologies, and the role of the social sciences, among other issues, we're committed to positive changes that will help us shape the world's future and achieve global impact through our teaching, our research, and the accomplishments of our graduates, who go on to remarkable careers in virtually every field.

It's a truly exciting time to join LSE. I'm confident that your time here will be an unparalleled intellectual and personal journey – one that will profoundly and positively shape your future. LSE will help you and challenge you and guide you to grow and learn. But if you want an adventure, an opportunity to be part of one of the world's great intellectual environments, we look forward to welcoming you to the School.

Larry Kramer

LSE President and Vice Chancellor



Meet our departments

At LSE you can study far more than just economics. We have over 40 undergraduate programmes to choose from. Meet our academic departments to find out what makes them so unique and discover what you can study.

In the following section we provide data relating to the careers of our graduates. *The data was collected as part of the Graduate Outcomes survey 2021/22, which is administered by the Higher Education Statistics Agency (HESA). Median salaries are calculated for respondents who are paid in UK pounds sterling and who were working in full-time employment 15 months after graduation.





Mehul Bansal
BSc Accounting and Finance



“

During my time at LSE, I've found a home in the Department of Accounting. The mentors and friends I've met here have supported me every step of the way. Our professors are world-renowned academics; their cutting-edge research and impactful teaching are core to the outstanding learning environment that LSE students experience. Choosing the BSc in Accounting and Finance was one of the best decisions I've made – it's a degree that opens doors worldwide and is respected by employers everywhere. ”



Accounting

lse.ac.uk/accounting

The Department of Accounting is one of the largest and most highly respected departments in Europe. Our faculty focus on delivering educational excellence to our students and conducting world-leading research in the economic, institutional, and organisational aspects of accounting. As a student in our department, you'll enjoy a rich and stimulating environment with access to not just top faculty members, but also distinguished speakers who are leaders in academia and the industry. You'll be able to supplement core disciplinary knowledge with options from a broad spectrum of social science subjects. Our students are highly sought after by a wide range of organisations globally in any area related to accounting or finance.

Number of undergraduate students: **368**

Number of academics: **18**

Department location:

LSE Campus – Marshall Building

Top three reasons why you should study accounting at LSE:

- 1) A world-renowned programme, with strong ties with alumni and industry.
- 2) Taught by academics at the frontiers of research who are helpful and approachable.
- 3) The programme helps develop critical thinking and an analytical mindset, skills which are sought after by employers.

Median salary of our undergraduate students 15 months after graduating: **£35,000***

Top five sectors our students work in:*

- 1) Financial and professional services
- 2) Accounting and auditing
- 3) Consultancy
- 4) Real estate, environment and energy
- 5) Information, digital technology and data.

Industry links and study abroad opportunities:

- You can apply for LSE's School-wide exchanges. See [page 55](#) for further details.

Accreditations:

BSc Accounting and Finance is accredited by the following bodies for exemptions from some professional examinations:

- Association of Chartered Certified Accountants (ACCA)
- Chartered Institute of Management Accountants (CIMA) through the accredited degree accelerated route
- Chartered Institute of Public Finance and Accountancy (CIPFA)
- Institute of Chartered Accountants in England and Wales (ICAEW).

Our programme:

BSc Accounting and Finance

(Data aggregated from HESA surveys 2021/22. Salary information is based on 40 respondents out of 119 graduates for this department, who reported salaries for full-time employment, paid in UK pounds sterling. See [page 4](#) for further details.)*



Berenice Low
BA Social Anthropology



People generally think that social anthropology is an extremely niche subject, but the converse is true. We explore various broad topics such as gender and sexuality, human nature, race and culture, and witchcraft. The Department of Anthropology is a tight-knit community of dedicated teachers, enthusiastic seniors and fun-loving peers who bring the subject to life. ”



Anthropology

lse.ac.uk/anthropology

Anthropology is the comparative study of culture and society. It asks big questions about what we have in common and what makes us different. It explores how the most personal and individual aspects of our lives might be shaped by the broader social and cultural worlds we live in – and it interrogates the very categories that we use to describe the world, such as gender, sexuality, religion and race. Anthropology can be combined in our programme with a specialisation in a language, international history or politics. LSE has been teaching anthropology since 1904 and is one of the most famous anthropology departments in the world. We're passionate about teaching and proud of our warm and welcoming community.

Number of undergraduate students: **209**

Number of academics: **16**

Department location: **LSE Campus – The Old Building**

Top three reasons why you should study anthropology at LSE:

- 1) Learn from the best – the 2021 REF rated us the best anthropology department in the UK for the quality of our research outputs.
- 2) Our courses focus on social anthropology and its relevance to contemporary issues in religion, the environment, digital life, politics, law, mind and society and gender, sexuality and kinship. They also go beyond theory to equip you in ethnographic and mixed media methods.
- 3) Take optional courses with world-renowned experts in the anthropology of childhood, art and poetics, race, racism and decolonisation, public anthropology, embodiment, human rights, health and welfare, and development. We also offer regional courses on South Asia, Africa, Amazonia, Melanesia and the Middle East.

Median salary of our undergraduate students 15 months after graduating: **£34,500***

Top five sectors our students work in:*

- 1) Law and legal services
- 2) FMCG, manufacturing and retail
- 3) Advertising, marketing, PR, media, entertainment, publishing and journalism
- 4) Real estate, environment and energy
- 5) Other professional, scientific and technical activities.

Industry links and study abroad opportunities:

- You can apply for LSE's School-wide exchanges. See [page 55](#) for further details.
- You can also apply for a year abroad at one of our partner institutions in Japan, China, and Australia.
- In the summer after your second year you can choose to conduct independent fieldwork with the support of our Summer Fieldwork Projects scheme.

Accreditations:

Our BA Anthropology and Law programme is accredited by the Bar Standards Board for the purpose of a qualifying law degree. The process to qualify as a solicitor in England and Wales is via the Solicitors Qualifying Exam (SQE). While a law degree or diploma is no longer necessary to the process of qualifying, a law degree is likely to remain the most effective and reputable way of acquiring the knowledge that is required by the Solicitors Regulation Authority to complete the first stage of the SQE. Please refer to our website and sra.org.uk/become-solicitor/ for further information and updates.

Our programmes:

[BA Anthropology and Law](#)

[BA/BSc Social Anthropology](#)

(Data aggregated from HESA surveys 2021/22. Salary information is based on 22 respondents out of 46 graduates for this department, who reported salaries for full-time employment, paid in UK pounds sterling. See [page 4](#) for further details.*)



“

I love how small the Department of Economic History is. Having classes with the same people year-on-year means that you form stronger friendships than in bigger departments. That said, for a small department, there seems to be a professor that specialises in anything you might be interested in researching! ”



Economic History

lse.ac.uk/economic-history

The Department of Economic History is a world-leading centre of economic history research and teaching. Economic historians study the factors that drive economic development and how past economies have changed. We focus on practical questions about real economies. For instance, why are some countries rich and others poor, what forces shape inequality and what does historical experience reveal about current global economic developments and crises? As a student, you'll join our welcoming community seeking to understand these questions. You'll learn the skills of economists and historians, and by the end of your degree, you'll produce new research in economic history.

Number of undergraduate students: **222**

Number of academics: **21**

Department location:
LSE Campus – Sardinia House

Top three reasons why you should study economic history at LSE:

- 1) We're the largest economic history department in Europe covering a very wide range of economic history topics and regions.
- 2) Our bespoke degrees give a greater focus and coherence than joint history and economics degrees at other universities.
- 3) Our training in persuasive writing, data analysis and research offers a unique combination of skills difficult to obtain in economics or history degrees.

Median salary of our undergraduate students 15 months after graduating:
£35,000*

Top five sectors our students work in:*

- 1) Financial and professional services
- 2) Accounting and auditing
- 3) Information, digital technology and data
- 4) Real estate, environment and energy
- 5) Consultancy.

Industry links and study abroad opportunities:

- You can apply for LSE's School-wide exchanges. See [page 55](#) for further details.
- We also offer annual paid research internship opportunities within the department for our undergraduate and master's students.

Our programmes:

[BSc Economic History](#)

[BSc Economic History and Geography](#)

[BSc Economics and Economic History](#)

(Data aggregated from HESA surveys 2021/22. Salary information is based on 33 respondents out of 62 graduates for this department, who reported salaries for full-time employment, paid in UK pounds sterling. See [page 4](#) for further details.)*



Samantha Ong Pay Min
BSc Economics
Former President of the
LSESU Economics Society



The best thing about studying at LSE, is studying economics at LSE. The Department of Economics is incredibly supportive – they really care about your wellbeing and your studies and are there to help you make the most of your time here at LSE. ☺



Economics

lse.ac.uk/economics

Through our programmes, you'll develop rigorous analytical techniques, apply them to address important social issues and policy questions, and develop wider employability skills within a lively, diverse community with a shared passion for economics. The LSE Department of Economics is one of the largest in the world, with expertise at the cutting-edge of developments across the spectrum of mainstream economics. You can also complement your studies in economics with a rich array of options from the breadth of social science.

Number of undergraduate students: **666**

Number of academics: **60**

Department location:

LSE Campus – Sir Arthur Lewis Building

Top three reasons why you should study economics at LSE:

- 1) Develop transferable analytical skills through rigorous study at the frontier of economics knowledge.
- 2) A bespoke, policy-relevant curriculum delivered by leading experts and informed by academic research.
- 3) A vibrant, diverse academic community in the heart of London linked to an international network of alumni.

Median salary of our undergraduate students 15 months after graduating: **£55,000***.

Top five sectors our students work in:*

- 1) Financial and professional services
- 2) Consultancy
- 3) Accounting and auditing
- 4) Advertising, marketing, PR, media, entertainment, publishing and journalism
- 5) Information, digital technology and data.

Industry links and study abroad opportunities:

- You can apply for LSE's School-wide exchanges. See [page 55](#) for further details.

Our programmes:

[BSc Economics](#)

[BSc Econometrics and](#)

[Mathematical Economics](#)

(Data aggregated from HESA surveys 2021/22. Salary information is based on 97 respondents out of 245 graduates for this department, who reported salaries for full-time employment, paid in UK pounds sterling. See [page 4](#) for further details.*)



Felix Nikolaus Oblin
BSc Finance



On the BSc Finance, we have access to faculty who are second to none in terms of their reputation and academic prowess. The department also values personal growth and offers one-of-a-kind workshops, speaker events and challenges. We're a small group on the programme: it feels like a family to me and our truly collaborative culture helps us all to make the most of our time at LSE. ”



Finance

lse.ac.uk/finance

The Department of Finance is one of the largest and most highly-regarded finance groups in Europe. We're devoted to excellence in teaching and research in the full range of finance subfields, including corporate finance, asset pricing theory, risk management, empirical analysis of capital markets, behavioural finance, portfolio analysis, derivatives pricing, microstructure and financial econometrics. We provide our students with a stimulating environment for research and learning. As a student with us you'll become part of our community, benefit from the research of academics recruited from top departments internationally and have the opportunity to hear from the frequent distinguished visitors who attend seminars and events on campus.

Number of undergraduate students: **195**

Number of academics: **32**

Department location:

LSE Campus – Marshall Building

Top three reasons why you should study finance at LSE:

- 1) BSc Finance will unlock the door for you to think from a wide variety of perspectives which you'll learn from leading professionals in their respective fields.
- 2) LSE Finance is home to some of the world's leading and most approachable academics and practitioners in finance who are there to support your learning.
- 3) Finance at LSE is a home away from home – we're a diverse group of people who make up one tight-knit family.

Median salary of our undergraduate students 15 months after graduating: **£65,000***.

Top four sectors our students work in:*

- 1) Financial and professional services
- 2) Accounting and auditing
- 3) Information, digital technology and data
- 4) Government, public sector and policy.

Industry links and study abroad opportunities:

- You can apply for LSE's School-wide exchanges. See [page 55](#) for further details.

Our programme:

BSc Finance

(Data aggregated from HESA surveys 2021/22. Salary information is based on 15 respondents out of 46 graduates for this department, who reported salaries for full-time employment, paid in UK pounds sterling. See [page 4](#) for further details.)*



Will Stein
BSc Geography with Economics



The Department of Geography and Environment run a series of trips and events. Through these experiences I've developed a strong sense of place within the department and made friends for life. ☺☺



Geography and Environment

lse.ac.uk/geography-and-environment

The Department of Geography and Environment specialises in human geography, economic geography and environmental studies. We aim to improve understanding of the social, economic and environmental aspects of geography and to inform policy around the world. As a student on one of our undergraduate programmes you'll join a friendly and welcoming department. You'll be taught by academics who are engaged with real policy-making and who are specialists in a range of disciplines and regions such as Europe, Latin America, Africa, South Asia, and Southeast Asia. Our teaching is informed by world-leading research and our programmes tackle real world issues.

Number of undergraduate students: **265**

Number of academics: **38**

Department location:

LSE Campus – Cheng Kin Ku Building

Top three reasons why you should study geography at LSE:

- 1) We're ranked second for geography in the QS World University Rankings 2024.
- 2) We offer exciting experiential learning opportunities including UK and international field trips and undergraduate research fellowships.
- 3) We have a strong social science, human geography and economic focus, bringing together unique expertise in urban, development, economic, environmental, and planning research.

Median salary of our undergraduate students 15 months after graduating: **£35,000***.

Top five sectors our students work in:*

- 1) Information, digital technology and data
- 2) Financial and professional services
- 3) Education, teaching and research
- 4) Real estate, environment and energy
- 5) Consultancy.

Industry links and study abroad opportunities:

- You can apply for LSE's School-wide exchanges. See [page 55](#) for further details.
- Students on BA Geography and BSc Environment and Sustainable Development have the opportunity to receive a language specialism attached to their degree certificate and transcript, eg, BA Geography with French, provided specific course and programme requirements are met. Language specialisms can be in French, Spanish, German, Mandarin or Russian.

Our programmes:

[**BSc Environment and Sustainable Development**](#)

[**BSc Environment and Sustainable Development with Economics**](#)

[**BA Geography**](#)

[**BSc Geography with Economics**](#)

(Data aggregated from HESA surveys 2021/22. Salary information is based on 33 respondents out of 69 graduates for this department, who reported salaries for full-time employment, paid in UK pounds sterling. See [page 4](#) for further details.*)



Max Marlow
BSc History and Politics



The Department of Government has offered me world-class resources and facilities to enable me to reach my highest potential. Their syllabus is paired with leading academics and a thriving student body. I couldn't think of a better place to study politics than in its heart here in London. ”



Government

lse.ac.uk/government

The Department of Government at LSE is one of the leading political science departments in the UK. As a student on one of our degrees, you'll follow courses from a range of subfields in political science, including comparative politics, rational choice theory, political economy, public administration and public policy, European politics, and political theory. You'll learn about the concepts and theories which underpin the study of politics, including ideas such as justice, democracy, liberty, sovereignty, and rights. You'll compare political phenomena in a variety of cultures and countries, learning about the diversity of political processes and how to answer broad theoretical questions about the political world.

Number of undergraduate students: **511**

Number of academics: **38**

Department location:

LSE Campus – Centre Building

Top three reasons why you should study politics at LSE:

- 1) You'll explore the political forces that are fuelling rapid change in our world.
- 2) You'll chart constellations of political questions with economic, historical and philosophical issues.
- 3) You'll seek a critical understanding of justice, rights, and power.

Median salary of our undergraduate students 15 months after graduating: **£35,500***.

Top five sectors our students work in:*

- 1) Financial and professional services
- 2) Consultancy
- 3) Information, digital technology and data
- 4) Government, public sector and policy
- 5) Education, teaching and research.

Industry links and study abroad opportunities:

- You can apply for LSE's School-wide exchanges. See [page 55](#) for further details.

Our programmes:

[BSc Politics](#)

[BSc Politics and Economics](#)

[BSc Politics and International Relations](#)

[BSc Politics and Philosophy](#)

(Data aggregated from HESA surveys 2021/22. Salary information is based on 61 respondents out of 130 graduates for this department, who reported salaries for full-time employment, paid in UK pounds sterling. See [page 4](#) for further details.*)



Studying history which is not Eurocentric has been very interesting and has been enhanced by the high quality teaching of the department. The department are extremely accommodating to students' needs and are willing to go the extra mile to help us achieve our potential, through the feedback they give and their personalised approach. ”



International History

lse.ac.uk/international-history

The Department of International History is world-renowned in its field, offering a unique perspective on the history of relations between states, peoples, and cultures. As a student with us, you'll be able to choose from courses that span from the 15th to the 21st century. Our programmes give as much attention to political, economic, social and cultural developments within states as to the relations between them. Our belief is that unless domestic and international history are studied together neither can be properly understood. As a student, you'll learn from academics who are undertaking ground-breaking research and become part of our supportive, welcoming and engaged community.

Number of undergraduate students: **359**

Number of academics: **28**

Department location:
LSE Campus – Sardinia House

Top three reasons why you should study history at LSE:

- 1) We have a global approach – our students can select courses that cover Asia, the Middle East, Africa, the Americas, and Europe.
- 2) Our teaching is delivered by world-class experts in their research field, who encourage our students to be inquiring thinkers, who are able to research, analyse and explain the history they encounter.
- 3) Studying as a historian in London offers a wealth of resources including archives, major research libraries, historical institutes, and museums.

Median salary of our undergraduate students 15 months after graduating: **£35,000***.

Top five sectors our students work in:*

- 1) Education, teaching and research
- 2) Government, public sector and policy
- 3) Consultancy
- 4) NGOs and charities
- 5) Health and social care.

Industry links and study abroad opportunities:

- You can apply for LSE's School-wide exchanges. See [page 55](#) for further details.
- BA History students have the opportunity to receive a language specialism attached to their degree certificate, eg, BA History with French, if they meet specific course and programme requirements. Language specialisms can be in French, Spanish, German, Mandarin or Russian.

Our programmes:

[BA History](#)

[BSc History and Politics](#)

[BSc International Relations and History](#)

(Data aggregated from HESA surveys 2021/22. Salary information is based on 25 respondents out of 64 graduates for this department, who reported salaries for full-time employment, paid in UK pounds sterling. See [page 4](#) for further details.)*



Maitrai Lapalikal
BSc International Relations



The Department of International Relations is like a family. I have made enough friends for multiple lifetimes, met professors that have challenged me to be better than my best and who've been thoroughly engaging in their teaching of current affairs. This truly is a vibrant and diverse student environment. ”



International Relations

lse.ac.uk/international-relations

International relations has been taught at LSE since 1924. The department was set up in 1927 and was the first of its kind. Students study a range of options in four broad areas: international security and statecraft, international law and organisations, international political economy, and international relations theory. You'll examine questions such as: why do states go to war and what impact does this have on the international system? Why do states cooperate and obey international law? How do we explain regional developments such as the European Union, or the re-emergence of the United Nations? Who are the winners and losers from globalisation and free trade? What can postcolonial and feminist thought contribute to international politics?

Number of undergraduate students: **171**

Number of academics: **31**

Department location:

LSE Campus – Centre Building

Top three reasons why you should study international relations at LSE:

- 1) LSE was ranked fourth in the QS World University Subject Ranking 2023 for politics and international studies and is one of the oldest and largest international relations departments in the world.
- 2) We offer a wide and diverse range of theoretical and empirical research and teaching.
- 3) We provide an exciting and broad range of extra-curricular activities to enhance and support students' exposure to a variety of international relations focused experiences.

Median salary of our undergraduate students 15 months after graduating: **£27,500***.

Top five sectors our students work in:*

- 1) Health and social care
- 2) Education, teaching and research
- 3) Accounting and auditing
- 4) Other professional, scientific and technical activities
- 5) NGOs and charities.

Industry links and study abroad opportunities:

- You can apply for LSE's School-wide exchanges. See [page 55](#) for further details.
- You'll have the opportunity to receive a language specialism attached to your degree certificate and transcript, eg, BSc International Relations with French, if you meet specific course and programme requirements. Language specialisms can be in French, Spanish, German, Mandarin or Russian.

Our programme:

BSc International Relations

(Data aggregated from HESA surveys 2021/22. Salary information is based on 18 respondents out of 57 graduates for this department, who reported salaries for full-time employment, paid in UK pounds sterling. See [page 4](#) for further details.)*



Language, Culture and Society is the perfect degree to explore both my interest in sociology and linguistics alongside learning a new language. This overlap has facilitated an excellent interdisciplinary foundation for my learning, enabling me to always make links between content across courses. We also have amazing pastoral care in the Language Centre, plenty of opportunities to meet with other LCS students, and not to mention departmental socials with drinks and pizza every Friday! ☺☺



Language Centre

lse.ac.uk/language-centre

The Language Centre offers programmes that combine either international relations or language culture and society courses with learning a language. As a student on one of our programmes, you'll learn how to use language in the context of how you'd like to live, study and work. We teach you to speak languages and also teach you about language. Topics include socio-linguistics, intercultural communication, literature and society. You'll spend the third year of your programme studying abroad. You'll gain international exposure, the opportunity to hone your language skills and gain valuable skills to prepare you for your future career.

Our languages programmes have been running since 2019 and our first cohort of students graduated in 2023. Our programmes will prepare you for a career in politics and government, diplomacy of international organisations, NGO charities, international development (including multi-national corporations), corporate organisations, research and advisory organisations and social care, as well as further study.

Number of undergraduate students: **79**

Number of faculty: **25**

Department location:

LSE Campus – The Huddle, 20 Kingsway

Top three reasons why you should study languages at LSE:

- 1) You'll be using and researching living languages in a multilingual global city and a truly international university.
- 2) You'll combine excellent language learning with world-class disciplinary study in international relations and sociology.
- 3) We have an excellent record for student feedback and attainment.

Industry links and study abroad opportunities:

- Students studying BSc International Relations and Chinese spend their third year studying abroad in China at Fudan University.
- Students on BSc Language, Culture and Society spend the third year of their programme studying abroad at a partner institution, depending on their language choice. The partner institutions are Universidad de Valladolid, Freie Universität Berlin, Liden and Denz Intercultural Institute of Languages/Tallinn University, SciencesPo, and Fudan University.

Our programmes:

[**BSc International Relations and Chinese**](#)

[**BSc Language, Culture and Society**](#)



Isabel Hahn
LLB Bachelor of Laws



What I love most about the LSE Law School is that their door is always open. Being encouraged to freely speak to academics has helped inspire me to discover the things I'm passionate about, and the support I've received along the way has been absolutely incredible. ”



Law School

lse.ac.uk/law

Since the foundation of LSE, the study of law has been an integral part of the School's mission. As a Law School, we believe that an understanding of law can only be achieved by examining it in its social, economic and policy context. As one of our students, you'll discover that law is not a body of knowledge stored in libraries, but a presence all around us, constantly evident in our social, civil and business interactions. You'll be able to engage with some of the pressing legal problems of our time and will be taught by academics whose research contributes to shaping the development of law.

Number of undergraduate students: **522**

Number of academics: **63**

Department location:

LSE Campus – Cheng Kin Ku Building

Top three reasons why you should study law at LSE:

- 1) The LSE Law School is one of the world's leading law schools and our academics produce world-leading legal research.
- 2) LSE is located in the heart of London's legal district close to the Royal Courts of Justice, the four Inns of Court, and top legal firms.
- 3) The student Law Society is one of the most active and engaged societies on campus, organising a wide range of social, careers and academic activities.

Median salary of our undergraduate students 15 months after graduating: **£36,500***.

Top five sectors our students work in:*

- 1) Law and legal services
- 2) Information, digital technology and data
- 3) Financial and professional services
- 4) Education, teaching and research
- 5) NGOs and charities.

Industry links and study abroad opportunities:

- You can apply for LSE's School-wide exchanges. See [page 55](#) for further details.
- The Law School offers a double degree programme (LLB/JD) with Columbia University in New York. This programme has demanding entry requirements and is open to a small number of second year students.

Accreditations:

Our programme is accredited by the Bar Standards Board for the purpose of a qualifying law degree. The process to qualify as a solicitor in England and Wales is via the Solicitors Qualifying Exam (SQE). While a law degree or diploma is no longer necessary to the process of qualifying, a law degree is likely to remain the most effective and reputable way of acquiring the knowledge that is required by the Solicitors Regulation Authority to complete the first stage of the SQE. Please refer to our website and sra.org.uk/become-solicitor for further information and updates.

Our programme:

LLB Bachelor of Laws

(Data aggregated from HESA surveys 2021/22. Salary information is based on 49 respondents out of 150 graduates for the LSE Law School, who reported salaries for full-time employment, paid in UK pounds sterling. See [page 4](#) for further details.*)



The opportunity to study courses offered by a variety of departments at LSE – including in management, economics, finance, mathematics, and law, amongst others – has truly made the BSc Management degree interesting, unique, and unparalleled. For anyone seeking a rigorous degree valued by employers in all career fields and sectors, I couldn't recommend the BSc Management degree more! ”



Management

lse.ac.uk/management

The Department of Management is a world-leading centre for education and research in business and management. Our location within a world-class social science institution at the heart of a leading global city makes us unique among other management and business schools. Our students develop analytical and critical skills and are equipped with a broad and deep social science-based understanding of management practices. They explore organisations and management practice through the rigorous lenses of economics, finance, statistics, mathematics and accounting, and have the skills needed to be effective managers of tomorrow in business, government and social enterprises around the world. The department's home in the Marshall Building offers our students exceptional facilities, dynamic student spaces, and access to invaluable services.

Number of undergraduate students: 472

Number of academics: 64

Department location:

LSE Campus – Marshall Building

Top three reasons why you should study management at LSE:

- 1) You'll study a wide range of courses, gaining in-depth knowledge drawn from the fields of economics, finance, statistics, mathematics, and accounting.
- 2) You'll benefit from research-led teaching, delivered by academic faculty working with people and organisations to motivate and improve the world through better understanding and practice of management.
- 3) You'll develop practical management competence, including the ability to work in teams, to write clearly both for managerial and scientific purposes, to conduct robust and valid quantitative analysis and present the results, and to give oral presentations.

Median salary of our undergraduate students 15 months after graduating: £35,500*.

Top five sectors our students work in:*

- 1) Information, digital technology and data
- 2) Financial and professional services
- 3) Consultancy
- 4) Accounting and auditing
- 5) FMCG, manufacturing and retail.

Industry links and study abroad opportunities:

- You'll have the opportunity to apply to spend a year studying abroad at one of the department's seven distinguished global partners, between the second and third year of your programme.
- You can apply for other School-wide exchanges. See [page 55](#) for further details.

Our programme:

BSc Management

(Data aggregated from HESA surveys 2021/22. Salary information is based on 36 respondents out of 125 graduates for this department, who reported salaries for full-time employment, paid in UK pounds sterling. See [page 4](#) for further details.*)



Holly Tarleton
BSc Mathematics and Economics



Studying maths at LSE has really highlighted the importance of the subject to me. This ranges from the calculus I use in my economics courses to the logical and analytical thought process valued by employers. I feel well supported in my studies by my class teachers, the Maths Support Centre and my peers.”



Mathematics

lse.ac.uk/mathematics

In the Department of Mathematics we teach and undertake research in fields such as financial mathematics, discrete mathematics and algorithms, mathematical game theory, and operations research. Our programmes are designed to meet the increasing demand for mathematically and statistically trained people, in a world full of data that needs to be understood. Beyond mastering specific techniques, the ability to think analytically remains with you for the rest of your life, enabling you to adapt to new developments in your chosen career. You'll join an active and engaged department that regularly hosts seminars and events.

Number of undergraduate students: **424**

Number of academics: **30**

Department location:

LSE Campus – Columbia House

Top three reasons why you should study mathematics at LSE:

- 1) The Department of Mathematics forms a vibrant intellectual community, comprising of excellent students, world-leading faculty, and high-achieving alumni.
- 2) The department is internationally recognised for its teaching and research. Located within a world-class social science institution, we aim to be a leading centre for mathematics in the social sciences.
- 3) As a department, we embrace LSE's ethos of research-led teaching, and view research and teaching as complementary activities, each enhancing the other.

Median salary of our undergraduate students 15 months after graduating: **£40,000***.

Top five sectors our students work in:*

- 1) Financial and professional services
- 2) Accounting and auditing
- 3) Information, digital technology and data
- 4) Real estate, environment and energy
- 5) FMCG, manufacturing and retail.

Industry links and study abroad opportunities:

- You can apply for LSE's School-wide exchanges. See [page 55](#) for further details.

Our programmes:

[BSc Financial Mathematics and Statistics](#)

[BSc Mathematics with Data Science](#)

[BSc Mathematics and Economics](#)

[BSc Mathematics with Economics](#)

(Data aggregated from HESA surveys 2021/22. Salary information is based on 32 respondents out of 105 graduates for this department, who reported salaries for full-time employment, paid in UK pounds sterling. See [page 4](#) for further details.)*



Kelly Choi
BSc Philosophy, Politics and Economics (PPE)



The Department of Philosophy is very supportive. We have an academic mentorship programme set up with the professors. We're also integrated into a family system with the second- and third-year students who are on our programme. It's absolutely an intellectually challenging and stimulating environment. ”



Philosophy, Logic and Scientific Method

lse.ac.uk/philosophy

The department was founded in 1946 by Sir Karl Popper and is renowned for doing philosophy in a manner that's both continuous with the sciences and socially relevant. It's widely recognised as a world-leading place for teaching and research in philosophy of the natural and social sciences, logic, moral and political philosophy, epistemology, decision and game theory, and social choice. The department embodies LSE's long tradition of analytic, interdisciplinary, and socially engaged philosophy. This tradition is exemplified by some of the world's leading thinkers and social reformers from diverse backgrounds who've worked or studied at LSE. If you'd like to join this tradition all you need is a critical, independent mindset and a desire to do empirically informed philosophy.

Number of undergraduate students: **319**

Number of academics: **16**

Department location:

LSE Campus – The Lakatos Building

Top three reasons why you should study philosophy at LSE:

- 1) LSE Philosophy specialises in a type of philosophy that's both continuous with the sciences and socially relevant.
- 2) LSE Philosophy graduates enjoy especially high career prospects (Graduate Outcomes Survey 2021/22).
- 3) LSE Philosophy hosts a rich and varied programme of conferences and events featuring some of the world's leading philosophers. All such events are open to our students.

Median salary of our undergraduate students 15 months after graduating: **£36,500***.

Top five sectors our students work in:*

- 1) Financial and professional services
- 2) Government, public sector and policy
- 3) Information, digital technology and data
- 4) Consultancy
- 5) Accounting and auditing.

Industry links and study abroad opportunities:

- You can apply for LSE's School-wide exchanges. See [page 55](#) for further details.
- Students on the BSc Philosophy, Politics and Economics can apply to take a year abroad in Year 3 of their programme and, if selected, will graduate with a degree called BSc in Philosophy, Politics and Economics (with a Year Abroad).

Our programmes:

[BSc Philosophy and Economics](#)

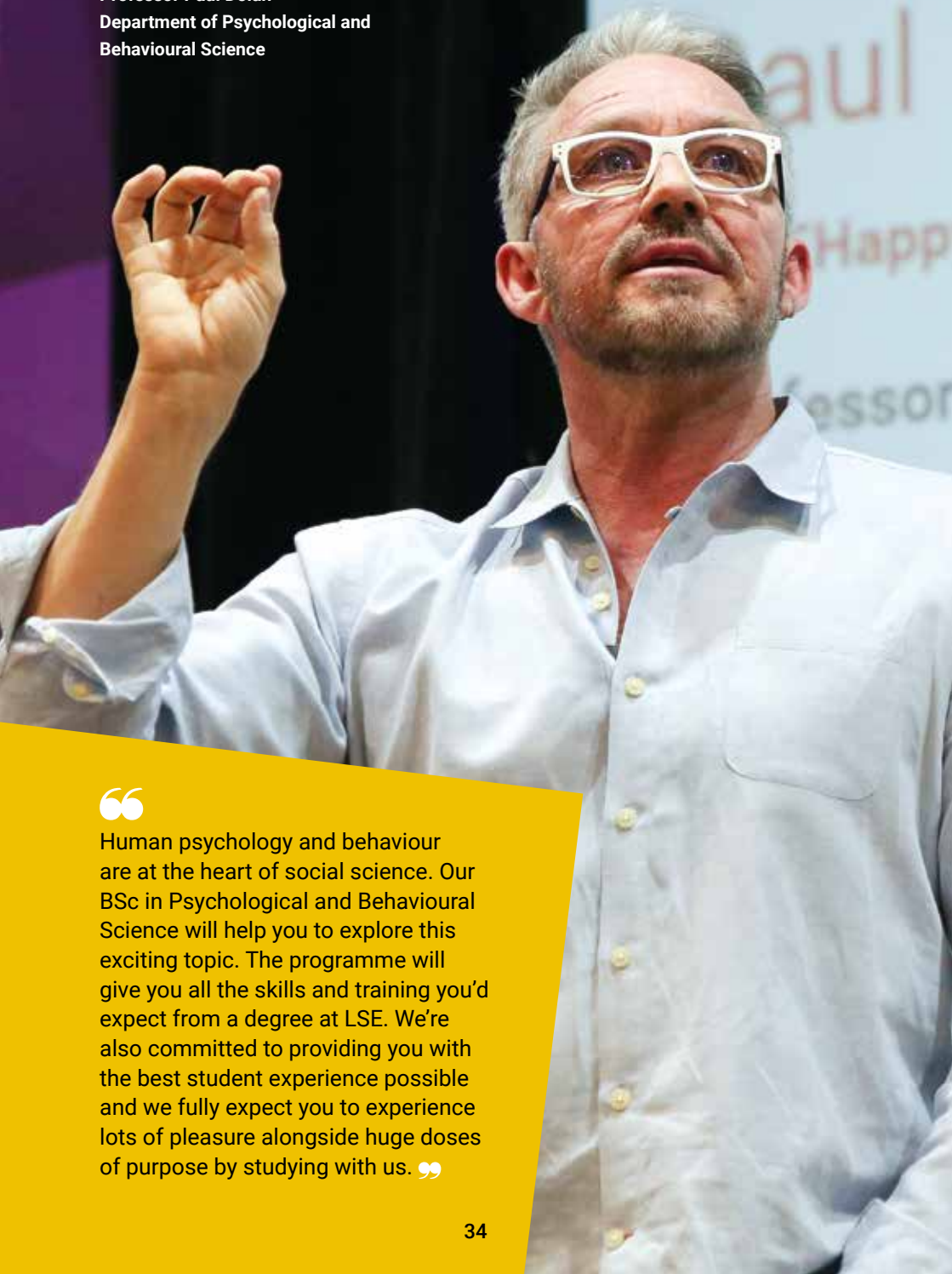
[BSc Philosophy, Logic and Scientific Method](#)

[BSc Philosophy, Politics and Economics](#)

(Data aggregated from HESA surveys 2021/22. Salary information is based on 35 respondents out of 74 graduates for this department, who reported salaries for full-time employment, paid in UK pounds sterling. See [page 4](#) for further details.*)



Professor Paul Dolan
Department of Psychological and
Behavioural Science



Human psychology and behaviour are at the heart of social science. Our BSc in Psychological and Behavioural Science will help you to explore this exciting topic. The programme will give you all the skills and training you'd expect from a degree at LSE. We're also committed to providing you with the best student experience possible and we fully expect you to experience lots of pleasure alongside huge doses of purpose by studying with us. ☺☺



Psychological and Behavioural Science

lse.ac.uk/pbs

Psychological and behavioural science focuses on how people think and behave as individuals in societal contexts. Our students learn the principles of how the mind influences behaviour, how behaviour changes in context, and how to apply those principles to social issues. You'll benefit from rigorous scientific training in statistics and research methods that are truly integrated with the principles of the discipline. You'll learn how to design research projects, use cutting-edge techniques to analyse your findings (including coding in R), and how to communicate your results to different audiences in different ways. Our students benefit from learning how psychological and behavioural science connects to the social and natural sciences and developing skills to apply that knowledge to real-world policy.

Number of undergraduate students: **151**

Number of academics: **22**

Department location:

LSE Campus – Connaught House

Top three reasons why you should study psychological and behavioural science at LSE:

- 1) You'll learn the core approaches to psychological and behavioural science from a world-leading department, ranked first in the UK for psychology in *The Times* and *Sunday Times: Good University Guide 2025*.
- 2) We incorporate cutting-edge research methods and statistical training throughout your studies.
- 3) You'll join an interdisciplinary environment that builds on LSE's excellence in the social sciences and relates your learning to real-world policy and practice.

Median salary of our undergraduate students 15 months after graduating: **£39,000***.

Top five sectors our students work in:*

- 1) Insurance
- 2) Information, digital technology and data
- 3) Financial and professional services
- 4) FMCG, manufacturing and retail
- 5) Consultancy.

Industry links and study abroad opportunities:

- You can apply for LSE's School-wide exchanges. See [page 55](#) for further details.
- Our accreditation from the British Psychological Society (see below) gives you access to an extensive network of psychologists.

Accreditations:

This programme is accredited by the British Psychological Society (BPS). You'll be eligible for Graduate Based Chartered (GBC) Membership if you gain a lower second classification (2:2) overall and pass your third year independent research project. During your studies, you'll also be able to join the BPS as a student member and take advantage of a range of benefits.

Our programme:

BSc Psychological and Behavioural Science

(Data aggregated from HESA surveys 2021/22. Salary information is based on 12 respondents out of 28 graduates for this department, who reported salaries for full-time employment, paid in UK pounds sterling. See [page 4](#) for further details.)*



Paul Keen

BSc International Social and
Public Policy with Politics



International Social and Public Policy with Politics is a study in improving wellbeing for the masses. Understanding effective welfare provisions is complemented by an in-depth understanding of the state. Being part of LSE's epic Department of Social Policy delivers opportunities and compassion that's made my university experience second to none within the discipline. ”



Social Policy

lse.ac.uk/social-policy

Studying social policy involves looking at real-world issues such as poverty, social exclusion, and education. It's about understanding and addressing social problems, examining how policy is created and implemented, and looking at how this affects people's wellbeing. As a student, you'll join the department where social policy began as an area of study and one that actively engages in local, national and international policy debates and provides analysis and advice to governments and non-governmental organisations (NGOs) around the world. You'll study developments in policy fields such as migration, health and social care, criminal justice, international development and social security, alongside academics who are leading experts in their respective fields.

Number of undergraduate students: **183**

Number of academics: **23**

Department location:

LSE Campus – Old Building

Top three reasons why you should study social policy at LSE:

- 1) Our curriculum is research-led and is taught by experts in the area of social policy.
- 2) Our teaching encourages students to think internationally, considering challenges and policy approaches from countries around the world.
- 3) Our teaching and research relate to real and current policy debates.

Median salary of our undergraduate students 15 months after graduating: **£32,000***.

Top five sectors our students work in:*

- 1) Financial and professional services
- 2) Government, public sector and policy
- 3) NGOs and charities
- 4) Health and social care
- 5) Consultancy.

Industry links and study abroad opportunities:

- We offer a language bursary fund which subsidises the cost of studying a non-degree language at the LSE Language Centre.
- We offer a limited number of fully-funded internships to allow students to take up placements (eg, in NGOs, charities) for which they wouldn't normally receive payment.
- You can apply for LSE's School-wide exchanges. See [page 55](#) for further details.

Our programmes:

[**BSc International Social and Public Policy**](#)

[**BSc International Social and Public Policy with Economics**](#)

[**BSc International Social and Public Policy with Politics**](#)

(Data aggregated from HESA surveys 2021/22. Salary information is based on 24 respondents out of 50 graduates for this department, who reported salaries for full-time employment, paid in UK pounds sterling. See [page 4](#) for further details.*)



Chinyere A Ogbue
BSc Sociology



“

Studying sociology, especially at LSE, was one of the best decisions I've made. The department has brilliant lecturers that are there to guide you and I'm thankful for their (literal) open doors. I know it's cliché, but I genuinely found myself here. ”



Sociology

lse.ac.uk/sociology

LSE's Department of Sociology was the first to be created in Britain and has played a key role in developing the discipline nationally and internationally since 1904. Sociology explores diverse aspects of social life by drawing on critical ideas that help us to understand societies and social issues. It addresses the real-world social problems and ethical dilemmas we face today. As a student in the department, you'll benefit from teaching that is informed by contemporary research in areas such as the economy, politics and human rights, social inequalities and identities, and urban sociology.

Number of undergraduate students: **119**

Number of academics: **26**

Department location:
LSE Campus – Old Building

Top three reasons why you should study sociology at LSE:

- 1) You'll engage with critical issues in contemporary societies.
- 2) You'll develop key skills in research and analysis.
- 3) You'll study with leading sociologists in the field.

Median salary of our undergraduate students 15 months after graduating: **£30,000***.

Top five sectors our students work in:*

- 1) Real estate, environment and energy
- 2) Government, public sector and policy
- 3) Consultancy
- 4) Advertising, marketing, PR, media, entertainment, Publishing and journalism
- 5) Recruitment and employment activities.

Industry links and study abroad opportunities:

- You can apply for LSE's School-wide exchanges. See [page 55](#) for further details.
- BSc Sociology students have the opportunity to receive a language specialism attached to their degree certificate and transcript, eg, BSc Sociology with French, if they meet specific course and programme requirements. Language specialisms can be in French, Spanish, German, Mandarin or Russian.

Our programme:

BSc Sociology

(Data aggregated from HESA surveys 2021/22. Salary information is based on 17 respondents out of 40 graduates for this department, who reported salaries for full-time employment, paid in UK pounds sterling. See [page 4](#) for further details.)*



Dev Trivedy
BSc Actuarial Science



The joy of being part of the LSE Department of Statistics is you get to learn interesting and relevant statistical concepts from leading academics and attend events such as the trips to Bloomberg and Lloyds, that showcase how these concepts are applied. ”



Statistics

lse.ac.uk/statistics

The Department of Statistics is internationally renowned for its contribution to the advancement of statistical and data science methodologies. Since its formation, it's been at the forefront of research and education in these areas. In today's rapidly evolving digital world, the demand for graduates with excellent statistical, mathematical and computational expertise is greater than ever. Our programmes aim to meet this demand, equipping students with the skills essential for pursuing successful careers in quantitative fields.

Number of undergraduate students: **428**

Number of academics: **32**

Department location:
LSE Campus – Columbia House

Top three reasons why you should study statistics at LSE:

- 1) Our graduates are highly coveted by the financial and other industries.
- 2) You'll gain from a cutting-edge curriculum delivered by world-renowned faculty, underpinned and informed by research.
- 3) We offer a unique focus on the application of statistics and data science within the broadly defined social sciences, including finance and economics.

Median salary of our undergraduate students 15 months after graduating: **£36,500***.

(Data aggregated from HESA surveys 2021/22. Salary information is based on 29 respondents out of 99 graduates for this department, who reported salaries for full-time employment, paid in UK pounds sterling. See [page 4](#) for further details.*)

Top five sectors our students work in:*

- 1) Financial and professional services
- 2) Insurance
- 3) Information, digital technology and data
- 4) Accounting and auditing
- 5) Other professional, scientific and technical activities.

Industry links and study abroad opportunities:

- You can apply for LSE's School-wide exchanges. See [page 55](#) for further details.

Accreditations:

- Entry into the actuarial profession can be achieved by our BSc Actuarial Science and BSc Actuarial Science (with a Placement Year) students, as the programme is fully accredited by the Institute and Faculty of Actuaries (IFoA). Students have the potential to be granted exemptions for the IFoA subjects CS1, CS2, CM1, CM2, CB1 and CB2.
- Students on our BSc Actuarial Science and BSc Actuarial Science (with a Placement Year) programmes may obtain an exemption from some professional examinations of the Chartered Institute of Management Accountants (CIMA)'s CGMA Professional Qualification through relevant pathways.

Our programmes:

[BSc Actuarial Science](#)

[BSc Actuarial Science \(with a Placement Year\)](#)

[BSc Data Science](#)

[BSc Economics and Data Science](#)

[BSc Mathematics, Statistics and Business](#)



LSE100

LSE100 builds your capacity to tackle multidimensional problems through research-rich education, giving you the opportunity to explore global challenges in collaboration with peers from other departments and leading academics from across the School. LSE100 invites you to step beyond the boundaries of your degree and engage with the cutting-edge social science research happening at LSE and the wider world.

Working individually and in small, multi-disciplinary teams you'll investigate complex challenges, drawing on contributions from LSE's world-leading experts. You'll use tools of systems thinking and deepen your understanding of your own discipline as you test theories and evidence from different disciplinary perspectives. You'll also develop your communication, teamwork and leadership skills as you apply your intellect and creativity to specific issues that interest you, both individually and as part of a group.

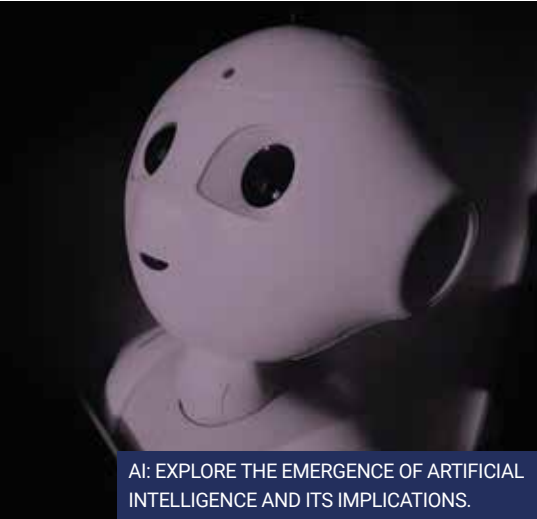
Before you arrive at LSE, you'll have the opportunity to select one of three themes to focus on during LSE100, each of which foregrounds an urgent and multifaceted challenge for social scientists to address. In 2025, the available themes will be:

- How can we control AI?
- How can we transform our climate futures?
- How can we create a fair society?

Please note that LSE100 themes are indicative and subject to change.



lse.ac.uk/lse100-welcome



AI: EXPLORE THE EMERGENCE OF ARTIFICIAL INTELLIGENCE AND ITS IMPLICATIONS.



CLIMATE FUTURES: HOW CAN SOCIAL SCIENTIFIC RESEARCH INFORM OUR RESPONSES TO CLIMATE CHANGE?

“

The most valuable aspect of the LSE100 experience has been considering my discipline history in a broader context. So, looking at how it relates to other disciplines and also how it can be applied in solving real world problems rather than just being confined to a conceptual framework in a classroom. ”

Adam Ahmed-Mekky, BA History



FAIR SOCIETY: ANALYSE CONTRASTING UNDERSTANDINGS OF FAIRNESS AND HOW THESE SHAPE OUR RESPONSES TO INEQUALITY AND INJUSTICE.

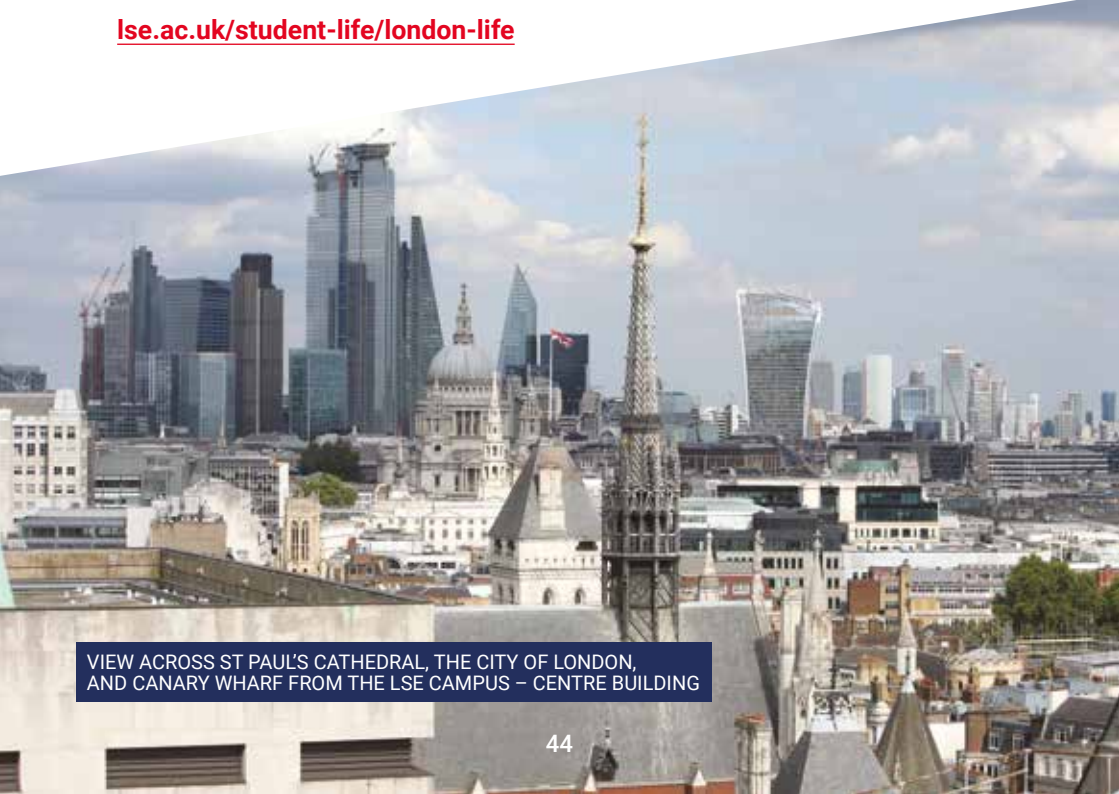


London life

You'll find the LSE campus in the very heart of London – the UK's lively and truly international capital city.

This is the view from our Centre Building on the LSE campus. We look out over the London skyline and all the opportunities that London has to offer our students.

lse.ac.uk/student-life/london-life



VIEW ACROSS ST PAUL'S CATHEDRAL, THE CITY OF LONDON, AND CANARY WHARF FROM THE LSE CAMPUS – CENTRE BUILDING



London is the top student city in the world (QS Best Student Cities 2025). There are several reasons why this is the case.



HOUSES OF PARLIAMENT



LONDON EYE



TRAFALGAR SQUARE



ST PAUL'S CATHEDRAL

London is an academic city with a huge academic community

With around 400,000 students across numerous institutions there are ample opportunities to connect, share resources, attend events and conferences and accelerate a career in academia or simply indulge your interests.

Never a dull moment

Our students tend to struggle with what to pick to do in their spare time rather than struggle to find options. Whether your interests are in history, food, music, theatre or sports, London will have something to offer you.

lse.ac.uk/student-life/essential-london



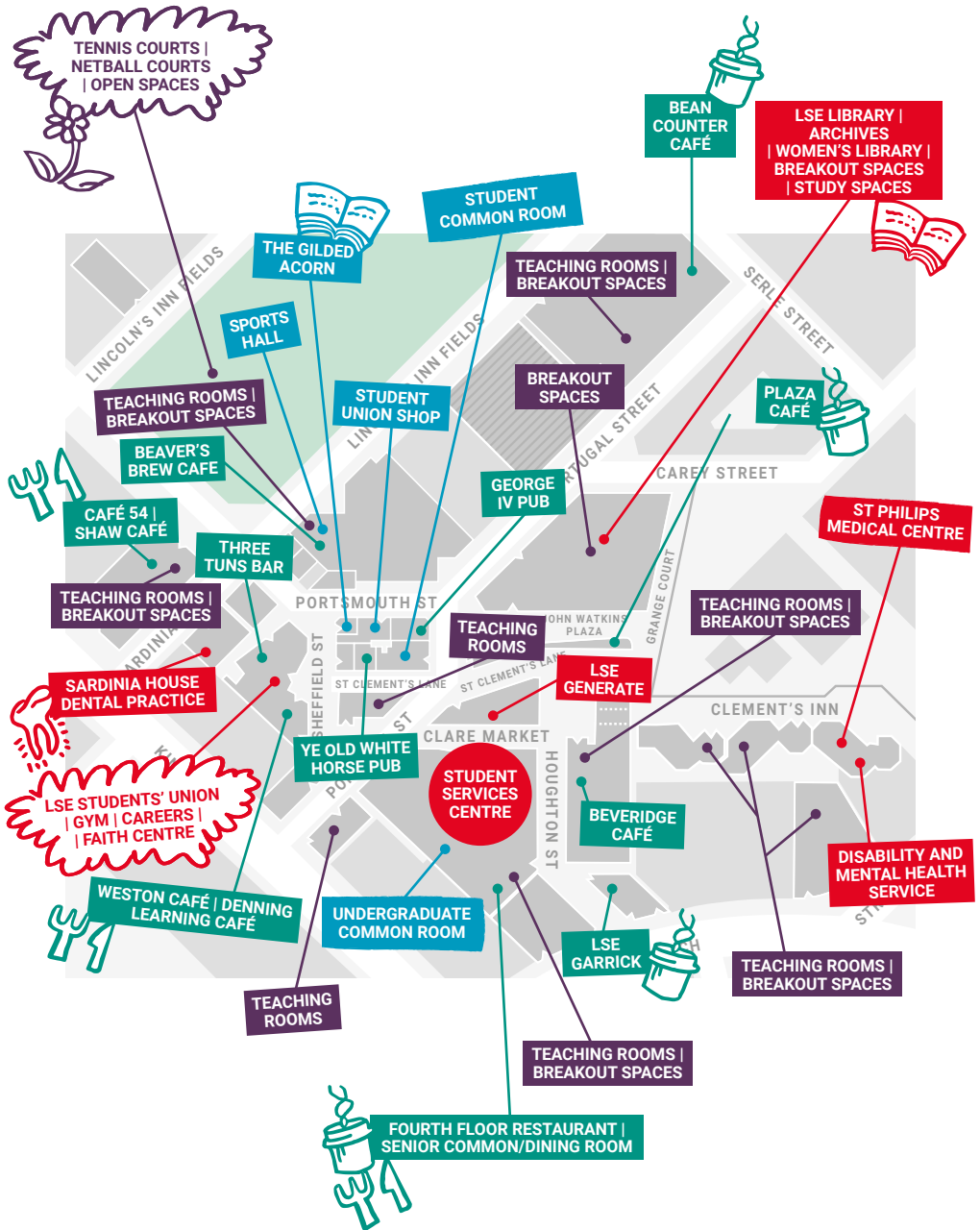
Campus life

As an LSE student, our campus will become your home for the duration of your undergraduate degree. We only have one campus – all of our buildings other than our accommodation are next to one another. Come and visit LSE and experience what it's like to walk around our campus.

lse.ac.uk/student-life/campus-life



"THE WORLD TURNED UPSIDE DOWN", SCULPTURE BY MARK WALLINGER





Campus life

LSE Students' Union (LSESU) is a not-for-profit organisation led by LSE students for LSE students. You automatically become a member once you start at LSE, and our aim is to help you make the most of all the life-changing experiences open to you during your time at university.

Here are some ways you can get involved with the LSESU:

- With over 200 societies and over 40 sports clubs, you're bound to find a way to connect with fellow, like-minded students.
- Become part of one of the most politically active and democratic Students' Unions in the country by getting involved with elections, student town halls, and more.
- You'll never be short of things to do, with tons of day-time activities, night-time events, and plenty of chances to socialise with your fellow students.
- Take advantage of our free, independent, and confidential advice service offering guidance and support on a range of issues.
- Keep active in our on-site gym, as well as accessing state-of-the-art facilities in our Marshall Building Strength and Conditioning Suite.
- Grab a coffee and a bite to eat in our cosy café, The Denning, or stop in for a drink after lectures in the iconic SU bar, the Three Tuns.

[llesu.com](https://www.lsesu.com)



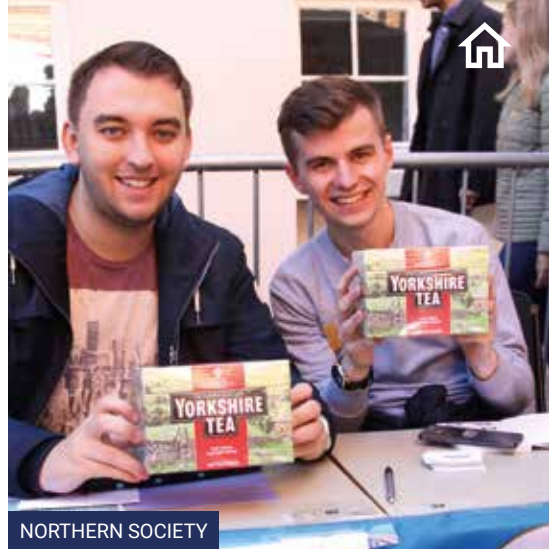
SPORTS HALL



SAILING CLUB



SNOW SPORTS CLUB



NORTHERN SOCIETY



DANCE CLUB



KOREAN ENTERTAINMENT SOCIETY



WOMEN'S RUGBY CLUB



WOMEN'S FOOTBALL CLUB



GYM





Sanjana Khanna
Department of Economic History



The Halls Cup started off as a competition, but led to overall team bonding and lots more events and parties to look forward to! It's a great initiative that leads to residents taking an active role in building community – making our campus and halls better, more fun places to live. ”



Accommodation

All first-year students are guaranteed accommodation in one of our LSE halls of residence or in one of the University of London halls for their first year if you book before the deadline. This is guaranteed regardless of where you live, so long as you list us as your first choice on UCAS.

Our accommodation is based in central London, giving you the amazing opportunity to live in the heart of the city with Covent Garden, the British Museum or perhaps the Tate Modern on your doorstep depending on which hall you pick. You can walk to the LSE campus from all of the LSE undergraduate only residences in 25 minutes. From the furthest University of London hall it takes 60 minutes.

There are a range of options depending on your budget including catered halls (some meals are provided) and self-catered (the best option if you want to cook for yourself). You can pick a twin/triple room, single, single ensuite or studio. All utility bills are included within your weekly rent. Explore the 360-degree tours on our website to see what is best for you.

Our accommodation team also offer support and guidance to students looking for private rented houses or flats. In addition, LSE students can make use of the University of London private housing services. Through

their website, students have access to a large database of landlords offering private housing. They also run a series of events throughout the year to prepare and help students look for private housing.



lse.ac.uk/student-life/accommodation



Support and resources for students

We're here to help and support you throughout your time at LSE, whether you need help with your academic studies or support with your welfare and wellbeing.

Whatever your query, big or small, there are a range of people you can speak to and who'll be happy to help.

Academic mentors – an academic member of staff who'll meet with you regularly and help with any academic, administrative or personal questions you have.

Academic support librarians – will be able to help you navigate the library and maximise its resources during your studies.

Class teachers and seminar leaders – will be able to assist with queries relating to a specific course you're taking.

Disability and Mental Health Service – offers confidential advice and support to all disabled students. This includes support for students with physical impairments, long-term health conditions, mental health conditions, specific learning difficulties, and autistic spectrum conditions. Our staff work to support LSE in its commitment to create an inclusive learning environment and ensure our students are treated equitably.

info.lse.ac.uk/disability-and-mental-health-service



ACADEMIC SUPPORT LIBRARIANS



FAITH CENTRE

Faith Centre – a place for worship, prayer and quiet reflection. It includes Islamic prayer rooms, a multi-faith space, and a quiet room for individual prayer and meditation. The centre hosts weekly wellbeing classes and worship, and also runs transformational leadership programmes promoting inter-religious understanding, building relationships and transforming attitudes across the diverse student body.

lse.ac.uk/faithcentre



LANGUAGE CENTRE



LSE LIFE

LSE Library – founded in 1896, the British Library of Political and Economic Science is the major international library of the social sciences. It stays open late, has lots of excellent resources and it's a great place to study. As an LSE student, you'll have access to a number of other academic libraries in Greater London and nationwide.

lse.ac.uk/library



IT HELP

IT help – is available in person, via email, or over the phone to assist with all your technology-related queries.

Language Centre – specialises in offering language courses targeted to the needs of students and practitioners in the social sciences. We offer pre-course English for Academic Purposes programmes; English language support during your studies; modern language courses in nine languages; proofreading, translation and document authentication and language learning support.

lse.ac.uk/language

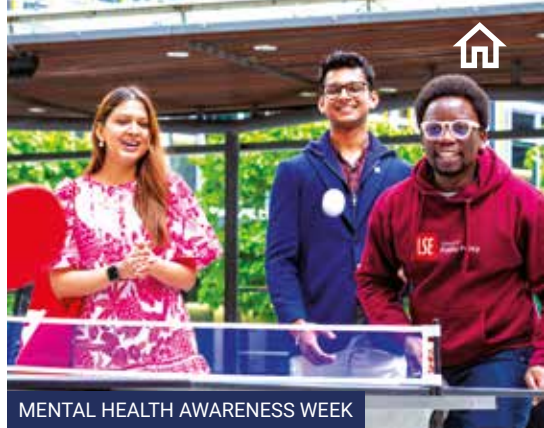
LSE LIFE – is the place to go to develop skills you'll need at LSE and afterwards. The centre offers workshops, online resources, and personalised one-to-one advice on academic writing, reading, making notes, critical thinking, developing your quantitative skills, research, and exam revision. It also offers personal development opportunities to help improve your public speaking, leadership and working with others – and to understand what "success" means for you. LSE LIFE helps you find ways to learn and make the most of your time at LSE, both inside and outside the classroom.

lse.ac.uk/lselife



LSE CAREERS

Nursery partnerships – LSE has a partnership with three local nurseries, offering discounted childcare close to campus.



MENTAL HEALTH AWARENESS WEEK

LSE Careers – whether you already know where you want to go or you'd like to explore your options, LSE Careers will help you connect with your future – from working with you to understand your motivations, to providing opportunities for you to meet employers across a range of sectors.

lse.ac.uk/careers

Student advisers – we have a Deputy Head of Student Services (Advice and Policy) and an Adviser to Women Students who can help with academic and pastoral matters.

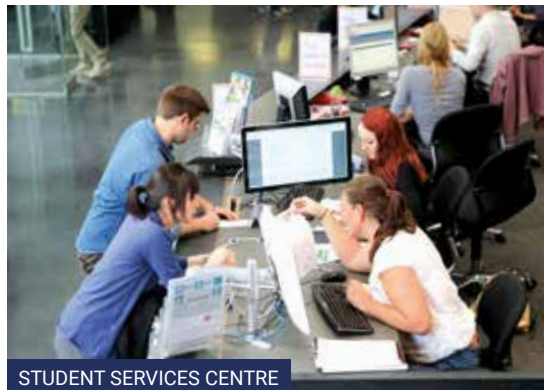


LSE STUDENTS' UNION

LSESU Advice Service – offers free, independent, and confidential advice on a range of issues, such as academic, personal and financial. It also offers a range of funding for students in need.

Sardinia House Dental Practice – private dental practice offering discounted treatments to LSE staff and students.

St Philips Medical Centre – based in Pethick-Lawrence House, the centre provides NHS Primary Care services to registered patients.



STUDENT SERVICES CENTRE

Student Services Centre – our staff are here to answer general queries and can point you in the direction of other LSE services.



Study abroad

LSE is committed to producing global citizens and providing students with opportunities to enhance their degrees.

Global opportunities at LSE

A year of study abroad will elevate your LSE experience, provide you with valuable transferable skills and enhance your graduate career prospects. The School currently offers year-long study-abroad opportunities at institutions in Austria, Canada, Chile, China, France, Hong Kong, Italy, Japan, Poland, Romania, Singapore, South Korea, Spain, Sweden, and the USA. You can apply during the second year of your degree to spend your third

year at the partner institution before returning to LSE to complete the final year of your undergraduate programme.

In addition to the School-wide opportunities for study abroad, students studying BA Anthropology and Law; BA/BSc Social Anthropology; BSc International Relations and Chinese; BSc Language, Culture and Society; and BSc Management can take advantage of degree-specific study abroad options.



lse.ac.uk/go-lse



Funding your studies in London

Financial support

We recognise that the cost of living in London may be higher than in your home town or country. That's one of the reasons we provide

generous funding for undergraduate students. There's funding available to eligible Home and Overseas fee status (including EU) students from a variety of sources.

The Uggle Family Scholars Programme

Available for both UK and overseas students, the Uggle Family Scholars Programme includes a generous financial package of over £22,000 for each year of your degree, alongside coaching, mentorship and opportunities throughout your studies to support your future success.

lse.ac.uk/uggle





UK government maintenance loans for living costs

- If you're normally resident in the UK, you can apply for funding for living costs from the UK government via Student Finance.
- If you're a non-UK resident, you're not normally eligible to apply for UK government funds; you should instead check your eligibility for funding from the government where you're resident.

LSE financial support

- **Home fee status students:** In recent years we've offered one of the most generous bursary packages in UK higher education. We offer an LSE Bursary and a Care Experienced and Estranged Student Bursary to eligible students and a variety of LSE scholarships are awarded on the basis of financial circumstances first and then academic merit.
- **Overseas fee status students:** We award a number of LSE scholarships to students with overseas fee status each year, including the LSE Undergraduate Support Scheme. Awards are made on the basis of financial circumstances first and then on academic merit.

LSE Access to Education scholarships are available for asylum seekers, refugees, forced migrants, and people with humanitarian protection. These scholarships can support both fees and living costs for the duration of your programme of study.

Tuition fees

You'll be charged a tuition fee each year of your undergraduate programme. The fee covers:

- registration and exam fees
- lectures, classes and individual supervision
- lectures given at other colleges under intercollegiate arrangements
- membership of the Students' Union.

It does not cover living costs or travel or fieldwork.

You'll find tuition fee amounts for each programme on our website.

lse.ac.uk/ug/fees-funding



How to apply

Your Application Timeline:

Now

Come and meet us on campus at one of our open days or on campus events. Use our online resources to find out more about LSE and our programmes.



2 September 2025

Completed applications can be submitted to UCAS.

14 January 2026

Final deadline for applications.

Now

Begin your UCAS application and write your personal statement.

December 2025

We'll start to send out decisions on applications.





January 2026
IB winter results will be sent to us.

13 May 2026
Latest date for us to give you a decision on your application.

August 2026
A-level results are sent to universities and your place will be confirmed.

April 2026
Attend our Offer Holder day.

July 2026
IB summer results sent to universities.



September 2026
Start at LSE
– Welcome!

lse.ac.uk/undergraduate



Assessing your application

All students apply to LSE through the UCAS website and should submit their application **no later than 14 January 2026**. When assessing your application we look at:

Academic achievement

We look at your predicted and confirmed final grades from your secondary school education including GCSE grades and your A-level grades or IB grades. Detailed information about the entry requirements for each of our programmes can be found on our website:

lse.ac.uk/programmes/search-courses

We also accept a range of other UK qualifications such as BTEC, Cambridge Pre-U, Cambridge Technicals, Welsh Baccalaureate, and Scottish Highers/Advanced Highers. Further information on these can be found on our website:

lse.ac.uk/study-at-lse/undergraduate/entry-requirements

Additionally, we accept a wide range of international qualifications. For details go to our website and select your country:

lse.ac.uk/international-students

Additional academic tests

For our Law programme we require you to take the Law National Aptitude Test (LNAT). For our Economics programmes we require you to take the Test of Mathematics for University Assessment (TMUA) and we encourage you to take it for our Mathematics and Statistics programmes. Take a look at our website for specific guidance:

lse.ac.uk/study-at-lse/undergraduate/entry-requirements

Subjects and subject combinations

We generally believe that a broad mix of traditional academic subjects is the best preparation for studying on one of our programmes. On our website you'll find a list of our "preferred" and "non-preferred" subjects:

lse.ac.uk/ug-admissions-information



We also have guidance on what we consider to be a “narrow combination” of subjects, which may be seen as less competitive, on language qualifications and specifically on Mathematics requirements which are relevant to many of our quantitative programmes.

Educational circumstances

If you're from the UK we'll use contextual information when assessing your application and making offers. Find out more information on our website: lse.ac.uk/ug-admissions-information

We also welcome applications from older students and provide guidance on our website for mature applicants: lse.ac.uk/study-at-lse/undergraduate/mature-applicants

Personal statement

Given LSE's competitive nature, your personal statement is a very important part of your application. Check out our guidance on writing your personal statement: lse.ac.uk/personal-statement

Teacher's reference

The reference is an important part of your application. Your school will provide this to us. We have detailed information and guidance for teachers on our website: lse.ac.uk/information-for-teachers

English language ability

English language test scores do not form part of the application process. However, if you're made an offer then we'll ask to see evidence that you meet our English language requirements. There are a range of ways that students can evidence their English language ability: lse.ac.uk/undergraduate/english-language-requirements

lse.ac.uk/undergraduate





Discover LSE



University fairs

Student blogs



Open days

(in-person and online)



LSE visits you

(UK and overseas)



Drop-in consultations



Student vlogs

Campus tours



Taster courses



Online discovery sessions

LSE travel fund

(helps eligible students with travel costs to attend on-campus events)



Live chat



Discover more about being an LSE student

Book a place on an open day or campus tour, meet us in a city near you, or experience LSE from home by attending one of our online discovery sessions.

Get a taste of what it's like to study at LSE by following our student bloggers and vloggers, or by attending one of our Taster courses. If you have any questions, get in touch with us online via Live Chat or attend one of our drop-in consultations on campus.

lse.ac.uk/meet-lse

LSE Widening Participation programmes

LSE is committed to widening access for students from all backgrounds – from pre-entry programmes to our holistic contextual admissions process and a comprehensive financial support package. We also offer bespoke support for specific groups such as care-experienced students.

Our wide range of virtual and in-person Widening Participation programmes are open to students who have always attended a UK state-funded school/college/sixth form and are from groups currently underrepresented at LSE and in higher education more broadly.

lse.ac.uk/widening-participation





About the prospectus

This prospectus is for people interested in applying for undergraduate study at LSE.

Please note that while care has been taken to ensure that the information contained in this prospectus was accurate at the time of it being printed, circumstances might have arisen since that time that have caused certain pieces of information to no longer be relevant. In some circumstances, the School may consider it necessary to subsequently change, suspend or withdraw a course or programme of study, or change the fees that apply to it. The School will neither be liable for information that after publication becomes inaccurate or irrelevant, nor for changing, suspending or withdrawing a course or programme of study due to circumstances outside of its control, which includes but is not limited to a lack of demand for a course or programme of study, industrial action, fire, flood or other environmental or physical damage to premises. You must also note that places are limited on some courses and/ or subject to specific entry requirements. The School cannot therefore guarantee places on its courses. You should visit the School's Calendar (lse.ac.uk/calendar), or contact the relevant academic department, for information on the availability and/or content of courses and programmes of study. Certain substantive changes will be listed on the "Undergraduate course and programme information for 2026/27" page at lse.ac.uk/calendar

Your consumer rights as a student

The Competition and Markets Authority (CMA) sets out your consumer rights as a student.

The guide covers three key consumer law issues for students:

- Information provision – universities need to provide up front, clear, intelligible, unambiguous and timely information.
- Terms and conditions – universities terms and conditions that apply to students need to be fair and balanced.
- Complaint handling processes and practices – universities need to ensure their complaint handling processes and practices are accessible, clear and fair to students.

The advice focuses on compliance with the following consumer legislations:

- Consumer Protection from Unfair Trading Regulations 2008 (CPRs).
- Consumer Contracts (Information, Cancellation and Additional Charges) Regulations 2013 (CCRs).
- Unfair terms legislation (at the date of publication, the relevant legislation is the Unfair Terms in Consumer Contracts Regulations 1999 (UTCCR).

Please visit gov.uk/government/publications/higher-education-guide-to-consumer-rights-for-students for further information.

Changes made to your programme since your acceptance of an offer to study can be found at lse.ac.uk/cma. We list programme changes by the following categories. These match categories of course information defined as "material information" in the guidance from the Competition and Markets Authority, ie, information that allows you to make "an informed choice about which universities and course to apply for":

- programme title
- entry requirements/criteria
- core modules/likely optional modules
- information about the composition of the programme
- methods of assessment of the programme
- the award obtained upon successful completion of the programme
- location of study
- length of programme
- programme regulation
- programme accreditation
- total course costs.

You should ensure you check these pages before accepting your offer.

Health and safety

LSE is generally a low risk environment. You can find information on our safety policy at lse.ac.uk/healthandsafety, with details of the measures we take to ensure the health, safety and welfare of everyone involved with the School.



Promoting equity, championing diversity and developing an inclusive LSE

One of our guiding principles in LSE's 2030 Strategy is to sustain excellence through an inclusive and diverse community. We work to build a School – and a society – in which everyone can fulfil their potential and their contributions are valued. As LSE members, we share responsibility for interacting with mutual respect and valuing our multicultural and diverse community.

To support this, LSE has implemented several initiatives to promote equity, diversity and inclusion (EDI):

- **Ethics code** – the LSE community is expected to act according to the principles set out in our Ethics Code. The Code explains the principles, how they should be applied, and how the School upholds them through policies. lse.ac.uk/ethics
- **Report and Support** – our management system to address bullying, discrimination, harassment, and sexual misconduct. info.lse.ac.uk/report-it
- **Safe contacts** – trained LSE staff members offering confidential support and guidance to individuals who have experienced bullying or harassment that is homophobic, transphobic, biphobic, racist, sexist or discriminatory. info.lse.ac.uk/making-a-choice/safe-contacts
- **Report + Support** – an online reporting form which you're encouraged to use if you've experienced or witnessed an incident of bullying or harassment. You can also access support online. reportandsupport.lse.ac.uk
- **Consent.Ed** – an educational programme focused on consent and fostering respectful and inclusive behaviours on campus. LSE students are expected to fully participate in the programme, though opting out is respected for personal reasons.
- **Independent Sexual Violence Adviser Service** – provides free, confidential, independent short-term emotional, and casework support for students who've experienced sexual violence, at any point in their lives. info.lse.ac.uk/report-it/sexual-violence-support-worker
- **AccessAble** – provides accessibility guides for all buildings on LSE's campus. accessible.co.uk/london-school-of-economics/

- **LGBTQ+ Role Models and Allies directory** – provides a network of informal contacts for the LSE community to share experiences, and support and learn from each other. lse.ac.uk/LGBTplus

- **Race Equity Framework** – developed to ensure students and staff benefit from a diverse and equitable education, research and work environment, fostering attainment and development opportunities for ethnic minorities. info.lse.ac.uk/race-equity-framework

- **Athena Swan action plan** – developed for the advancement of gender equity at LSE. It includes actions to support the professional development and pay equity for women, as well as increase support for parents and carers. info.lse.ac.uk/athena-swan

- **LSE Students' Union** – a student led, not-for-profit organisation that represents all students through their Part-Time and Sabbatical Officers. lesu.com/voice/student-reps/

If you'd like to find out more about these and other initiatives, please contact the EDI team at edi@lse.ac.uk. You can also get more information about our partnerships, training, workshops, policies and resources, and news and events in our website: lse.ac.uk/equitydiversityinclusion

This information can be made available in alternative formats, on request. Please contact, prospectuses@lse.ac.uk

The London School of Economics and Political Science is a School of the University of London. It is a charity and is incorporated in England as a company limited by guarantee under the Companies Acts (Reg no 70527).

The School seeks to ensure that people are treated equitably, regardless of age, disability, race, nationality, ethnic or national origin, gender, religion, sexual orientation or personal circumstances.

Published in February 2025 by Student Marketing, LSE.

Design: LSE Design Unit (lse.ac.uk/designunit)

Acknowledgements: Thanks to all the students and staff who gave permission for us to publish their photographs in this prospectus.



THE LONDON SCHOOL
OF ECONOMICS AND
POLITICAL SCIENCE ■



[@londonschoolofeconomics](https://www.instagram.com/londonschoolofeconomics)



[@lse](https://www.tiktok.com/@lse)



[@studylse](https://twitter.com/studylse)



[@theLondonSchoolofEconomics](https://www.youtube.com/@theLondonSchoolofEconomics)



[facebook.com/lseps](https://www.facebook.com/lseps)



[linkedin.com/school/london-school-of-economics](https://www.linkedin.com/school/london-school-of-economics)



lse.ac.uk/meet-lse



lse.ac.uk/ask-lse

lse.ac.uk/undergraduate

The London School of Economics
and Political Science
Houghton Street
London WC2A 2AE