



THE LONDON SCHOOL
OF ECONOMICS AND
POLITICAL SCIENCE ■

130 EST 1895
years



GRADUATE STUDENT FUNDING GUIDE

2026/27







If you're thinking about graduate study in 2026/27, you may be wondering about the availability of scholarships, studentships and loans.

We provide generous financial support to our graduate students each year. In addition to LSE's own funds, you may be able to access scholarships and financial support from a range of governments and funding agencies around the world. The following pages provide an overview of the sources of funding available for graduate students.

New scholarships and awards may be introduced throughout the year, so you're encouraged to look at our website on a regular basis.

Information in this guide is correct at the time of being produced (October 2025). Please visit lse.ac.uk/grad/fees-funding for the most up-to-date information.

Graduate financial support at LSE

At-a-glance summary

	Master's – Home students	Master's – Overseas students	Research – Home students	Research – Overseas students	
LSE Graduate Support Scheme	•	•			Page 3
LSE country-based awards	•	•	•	•	Page 4
LSE subject-based awards	•	•	•	•	Page 4
LSE PhD Studentships			•	•	Page 8
LSE ESRC DTP Studentships	•	•	•	•	Page 9
External funding	•	•	•	•	Page 10
Other sources of funding	•	•	•	•	Page 12

LSE Graduate Support Scheme

LSE makes available approximately £3 million annually in the form of awards from the Graduate Support Scheme (GSS) for students applying for taught master's programmes.

Once you apply for a place on a master's programme, you'll be sent a link to the online Applicant Portal for the GSS and other awards.

The value of GSS awards ranges from £5,000 to £20,000 depending on financial need. The GSS aims to support those who have some funding in place for their studies, but need additional funding to allow them to come to LSE. We usually start making GSS awards in January and continue until April 2026. As funds are limited, you're encouraged to apply as early as possible.

Your financial information won't be considered as part of your application for a place at the School.

How to apply: Apply using the online form via the Graduate Applicant Portal. Students may only apply for this financial support once they've submitted an application for a place at the School.

Deadline: Apply as early as possible. The application process will open in January 2026 and close on 23 April 2026.

lse.ac.uk/grad/fees-funding



LSE is fantastic. From the grandeur of the buildings and architecture to the ambition and ideas harboured by fellow students, it's a place that really motivates you to fulfil your potential.

I was lucky enough to receive funding from the LSE Graduate Support Scheme in order to assist me with the financial costs of my study – without this support I wouldn't have been able to pursue a master's degree.

I feel that by attending LSE I've furthered my personal and academic skills. The staff were always happy to help and provided valuable insight given that they're leaders in their fields of research. Beyond the studying, LSE is a hub of internationalism, which has allowed me to learn a great deal about other cultures and has really broadened my world-perspective. I have many friends from all areas of the globe that I'll be sure to keep in touch with.

Tom Rooke

Dorchester, UK

MSc History of International Relations
Graduate Support Scheme



LSE country-based and subject-based awards

We offer a range of scholarships for master's and research students joining LSE from specific regions of the world.

There are also scholarships available for master's and research students studying particular disciplines at the School.

Awards become available throughout the year. You're encouraged to check the Financial Support webpages on a regular basis.

Deadline at master's level: Apply as early as possible. The application process will close on 23 April 2026. Decisions on these awards will be made between May and July 2026.

Deadline at research level: Apply as early as possible. Complete applications for admission received by the deadline given for your programme will be considered.



The awards listed here are just a small sample of country-based scholarships available in 2025/26. For a full list of our awards, please visit lse.ac.uk/grad/fees-funding

At master's level

Ambassador E O Kolade Scholarship

The Ambassador E O Kolade Scholarship supports exceptional students from across Africa who are ready to make a lasting impact in their communities. The award provides funding towards tuition fees and living costs for postgraduate study in the UK. Open to nationals and residents of eligible African countries, this scholarship aims to empower future leaders and changemakers from across the continent.

C V Starr Scholarship

The C V Starr Scholarship offers funding to help students from Southeast Asia and the Pacific to pursue postgraduate study in the UK. It supports those undertaking a one-year taught master's programme in any subject area. To be eligible, you must hold an offer of admission to a one-year taught master's programme and be a national of one of the eligible countries.

Mohammed Al Fahim Scholarship

The Mohammed Al Fahim Scholarship is awarded to talented students from the Middle East and North Africa (MENA) region who are pursuing postgraduate study at LSE. The award contributes towards tuition fees and living costs for a one-year taught master's programme. To be eligible, you must be a national of and domiciled in a MENA country (including Arab League member states, Iran, Israel, and Turkey), have completed your undergraduate degree in a MENA country, and be admitted to a programme with a focus related to the study of the MENA region.

Peruvian Scholarship for Public Service

The Peruvian Scholarship for Public Service supports students from Peru who are committed to making a positive impact through public service. Open to applicants who are ordinarily resident in Peru and studying within the School of Public Policy, the scholarship covers full tuition fees for the duration of the programme. Successful awardees will also receive a living stipend to assist with day-to-day costs and a one-off payment to help with relocation to London.

At research level

Lee Family PhD Scholarship – China and Hong Kong

The Lee Family PhD Scholarship, generously funded by the Lees Charitable Foundation, supports exceptional students from mainland China and Hong Kong to undertake a four-year research degree at LSE. The award covers full tuition fees and provides an annual stipend. This prestigious scholarship offers an incredible opportunity to join LSE's world-class research community and make a lasting impact through innovative and influential scholarship.

Statistics UK BAME Studentship – UK

The Department of Statistics offers a UK BAME Studentship to support talented UK-domiciled students from ethnic minority backgrounds pursuing a four-year MPhil/PhD in Statistics. The award covers tuition fees and provides an annual stipend. This studentship aims to foster greater diversity and inclusion in the field of statistics while supporting exceptional researchers to reach their full potential at LSE.



The awards listed below are just a small sample of the subject-based scholarships available in 2025/26. For a full list of our awards, please visit lse.ac.uk/grad/fees-funding

At master's level

Sudipto Bhattacharya Scholarship

The Sudipto Bhattacharya Scholarship honours the legacy of Professor Sudipto Bhattacharya by supporting students with exceptional academic potential in the field of financial economics. The award offers full tuition fee coverage for one outstanding candidate applying to either the MSc Finance and Economics or the MSc Finance and Economics (Research) programme. It's aimed at students who demonstrate exceptional academic merit and a clear commitment to advancing their understanding of finance and economics.

Carsten Stoehr Scholarship in Government

The Carsten Stoehr Scholarship in Government supports offer holders of any full-time, one-year master's programme within the Department of Government. Preference is given to students with a strong interest in analytical and critical theory, though those focusing on the history of political ideas are also encouraged to apply. This award reflects a commitment to nurturing rigorous debate and supporting the next generation of thinkers and leaders in political thought.

Wellcome Award – MSc Health and International Development

The Wellcome Award offers an exceptional opportunity for applicants to the MSc Health and International Development. It covers tuition fees and maintenance costs, with an additional research grant to support

dissertation fieldwork. Only one scholarship is awarded each year, recognising students with a strong academic record and a passion for addressing major global health and development challenges.

At research level

Grantham Institute

The Grantham Research Institute offers one to two studentships each year for outstanding PhD applicants whose research focuses on climate change, the environment, or sustainability. Eligible research areas include environmental economics, and environmental policy and development. The award covers tuition fees for the first three years and provides a stipend for living costs for the full four years.

Global School of Sustainability

Following the launch of the Global School of Sustainability in 2025, a new initiative dedicated to advancing solutions for some of the world's most pressing sustainability challenges, we're proud to offer PhD scholarships to support outstanding researchers working in this vital area. The scholarship is open to both Home and Overseas students and provides funding for tuition fees for the first three years and includes a stipend for all four years. This award offers an exciting opportunity to be part of a pioneering global initiative focused on driving impactful, interdisciplinary research in sustainability.

LSE PhD Studentships

In 2026, LSE will be offering studentships to new research students in the form of LSE PhD Studentships and LSE ESRC DTP Studentships (see the next page).

LSE PhD Studentships will be tenable for four years and will cover full fees and an annual stipend, which for 2025 entry was £22,780. They are available for Home and Overseas students undertaking research in any LSE discipline, with annual renewal subject to satisfactory academic performance.

These awards will be made solely on the basis of outstanding academic merit and research potential. This relates both to your past academic record and to an assessment of your likely aptitude to complete a PhD in your chosen topic in the time allocated.

How to apply: There's no separate application for these awards. To be considered for this

funding, you must submit your complete application to study for a PhD at the School by the relevant deadline. Academic departments are able to nominate a limited number of candidates for consideration for these awards by a School panel.

Deadline: You must submit a complete application (including references, proposal, marked work, etc) for a place on a PhD programme by 14 January 2026.

Please note the deadline for some of our programmes is 10 December 2025. Some departments also have a second later deadline of 27 May 2026.

Check the PhD programme pages to see which deadline applies to each programme.

lse.ac.uk/study-at-lse/graduate/fees-and-funding/phd-studentships



I was awarded funding from the UK's Economic and Social Research Council. It was a requirement of my funding to do an MSc in research methods before going on to do a PhD, and it's taught me very valuable skills that I can now bring to both academic and applied settings. There's a good amount of funding available at LSE for students from all over the world.

After my MSc, I'll be pursuing a PhD in Demography in LSE's Department of Social Policy, researching inequalities of access to reproductive and maternal health care.

Laura Sochas

Paris, France

MSc Social Research Methods

LSE ESRC DTP Studentship



LSE DTP ESRC Studentships

Funded by the Economic and Social Research Council (ESRC), the LSE Doctoral Training Partnership (DTP) is housed in the PhD Academy in LSE's prestigious Library building.

LSE ESRC DTP Studentships are selected within LSE and awarded under the terms set by the ESRC.

Each studentship is tenable for a minimum of three and a half years (full-time) or seven years (part-time), depending on the programme of study, and subject to satisfactory academic performance.

Funding can cover a one or two year's research training master's linked to two or three years of PhD study. Each academic department is responsible for nominating students for funding. Please visit esrc.ukri.org and lse.ac.uk/grad/fees-funding for further information on ESRC eligibility and postgraduate funding opportunities.

LSE's DTP covers most economics and social science research programmes within the School, and awards are spread across eligible departments.

There's additional DTP funding available during the research programme to support difficult language training, field work, overseas institutional visits, placements and internships.

How to apply: There's no separate application for any of these awards. The selection of students will be based on their PhD application to the School.

Deadline: You must submit a complete application (including references, proposal, marked work, etc) for a place on a PhD programme by 14 January 2026.

Please note some departments have a deadline of 10 December 2025.

lse.ac.uk/grad/fees-funding

External funding

Loans

Loan schemes to help fund graduate study are available in some countries. Please visit lse.ac.uk/grad/fees-funding for more information about the following loan schemes and how LSE administers them.

UK

The UK Government offers loans for master's and PhD study. The terms and how much is available differs between England, Scotland, Wales and Northern Ireland. For students from England the amount was £12,858 in 2025/26 for taught postgraduate study (including MRes) and £30,301 for doctoral study.

USA

The US Department of Education operates a Direct Loan programme whereby eligible students can borrow educational loans to assist with the cost of living.

Canada

Canadians may be able to borrow government loans via their Province. Please visit hrsdc.gc.ca for more information.

LSE part-funded awards

LSE works with a number of funding and scholarship agencies around the world to part-fund awards. In 2025/26, the following scholarships for graduate study at LSE were offered by the organisations listed opposite:



Funder	Country	Website
Chevening	Global	chevening.org
Joint Japan World Bank	World Bank member countries – programmes on development	worldbank.org/en/programs/scholarships
Commonwealth Scholarships	Developing Commonwealth countries	cscuk.fcdo.gov.uk
Fulbright	USA	fulbright.org.uk
Marshall Scholarships	USA	marshallscholarship.org
COLFUTURO	Colombia	colfuturo.org
CONACYT	Mexico	conacyt.gob.mx
FIDERH	Mexico	fiderh.org.mx
FUNED	Mexico	funedmx.org
CONICYT	Chile	conicyt.cl
Fundación GuateFuturo	Guatemala	guatefuturo.org
Aurora/Roberta Sykes Foundation	Australia	aurorafoundation.com.au
Said Foundation	Syria, Lebanon, Jordan, Palestinian Territories	saidfoundation.org

Please visit lse.ac.uk/grad/fees-funding for a list of more external scholarships and loans for graduate study.

Other sources of funding

You may also be able to take out private loans or find external sponsors of funding opportunities by searching through the sites listed below:

Association of Commonwealth Universities
acu.ac.uk

European Union
ec.europa.eu

UK Council for International Student Affairs
ukcisa.org.uk

National Union of Students
nus.org.uk

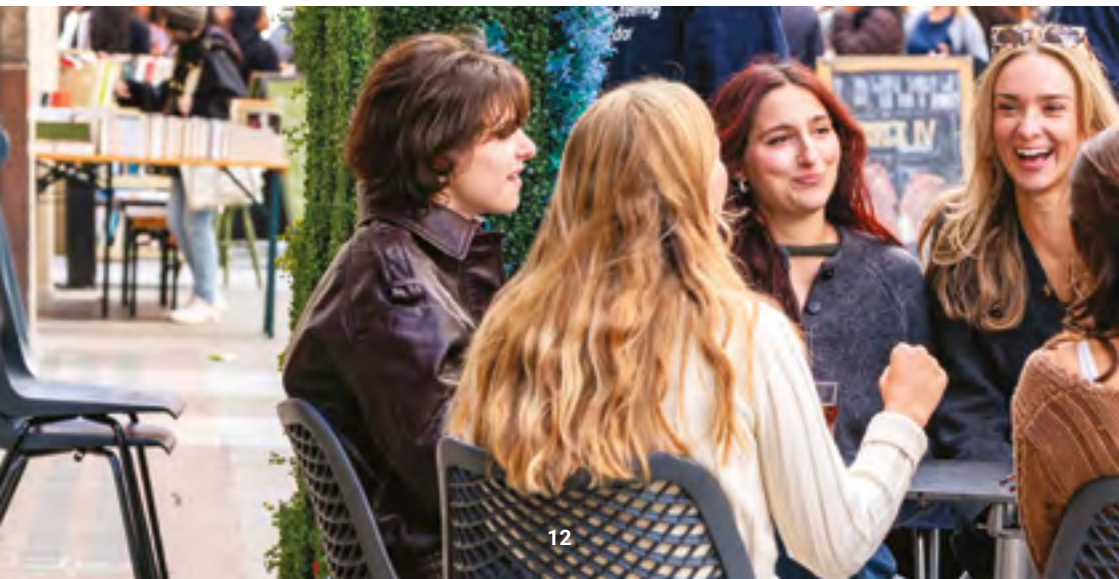
CSU (Higher Education Careers
Services Unit)
prospects.ac.uk

UNESCO
unesco.org

Educational Grants Advisory Service
egas-online.org

Universities UK
universitiesuk.ac.uk

Education and Skills Funding Agency
[gov.uk/government/organisations/
education-and-skills-funding-agency](http://gov.uk/government/organisations/education-and-skills-funding-agency)



Tuition fees

Fees cover registration, teaching, first entry to examinations, the use of the Library and membership of the Students' Union. They also normally cover teaching and the use of student common rooms at other colleges of the University of London, if your programme has intercollegiate arrangements. If you receive an offer, you'll be informed of the relevant tuition fee amount in your offer letter.

Students who completed undergraduate study at LSE and are beginning taught graduate study at the School are eligible for a 10 per cent of the fee reduction. Find out more at lse.ac.uk/rewards-and-discounts

Tuition fee amounts are listed on the individual programme pages on the LSE website as well as on the table of fees: lse.ac.uk/table-of-fees

Fee status

Once we receive your application, we assess whether you meet the criteria for Home or Overseas fee status, and therefore determine the tuition fee amount you're likely to pay at enrolment.

LSE assesses your fee status using The Higher Education (Fee Limit Condition) (England) Regulations 2017.

Further details on fee status classification can be found at lse.ac.uk/fee-status-classification



Living costs

The perceived cost of living and studying in London is a concern for many students. But if you plan carefully and budget efficiently then it certainly is possible to take advantage of the amazing opportunities the capital has to offer, whilst living within your means.

Useful budgeting tools

UCAS budget calculator

ucas.com/money-and-student-life/money/budgeting

GOV.UK calculator

gov.uk/student-finance-calculator

Accommodation

LSE provides a range of accommodation for graduate students, with varying costs depending on location, room type and facilities.

- This includes utility bills, internet access and contents insurance.
- Pay up front or in three termly instalments.
- In catered halls, one or two of your daily meals will be included. In self-catered halls, you'll need to buy your own groceries.
- You can also choose to live in private housing in London.

lse.ac.uk/accommodation

Travel

LSE halls are all within walking distance of our campus, but London is a large city and you'll need to factor travel costs into your budget.

The main forms of public transport are the London Underground (the "Tube"), trains and buses. The transport system uses "zones" to determine how much you pay – central London is Zone 1, with higher zones the further out you travel. LSE, our accommodation and most cultural attractions are within Zone 1 and 2. Many graduate students choose to live further from campus which may mean travelling outside of Zone 1.

As a student, you're entitled to receive 30 per cent off standard Tube and bus fares if you purchase an 18+ Student Oyster photocard.

You might also choose to save money by cycling – there's a public cycle hire scheme in London, or you can use your own bicycle.

Useful travel links

Transport for London

Find out about fares and payment methods, and access maps for London Underground and buses at tfl.gov.uk

How to get to LSE

LSE is easily reached on public transport. Find out the quickest ways to get to campus at lse.ac.uk/lse-information/travelling-to-lse

Food

Food costs will account for a significant part of your budget. However, costs will vary, depending on whether you live in catered or self-catered halls. There are steps you can take to reduce your food expenditure; for example, shopping at local markets, cooking in bulk, and bringing a packed lunch to university.

Study costs

Study costs include books, stationery and any other equipment to assist you with your studies. Although some students prefer to buy books new, you can save a lot of money buying them second-hand from other students or recent graduates. You don't necessarily need to buy even your core texts – the library stocks multiple copies of core and recommended readings (as well as single copies of more specialist books). A large amount of reading material is also available online for free.

Personal expenses

You'll need to consider how you'll budget for things like clothing, gym memberships, nights out, mobile phone bills, or anything else that you'll want to buy.

Remember that students are often entitled to discounts. The TOTUM, Student Beans and UNiDAYS student discount cards and apps will give you access to discounts across clothing, food and socialising. The LSE Students' Union provides a wide range of societies, activities and social events at cheap rates. London also boasts an array of free activities for students, many of which are featured in *Time Out* magazine. For instance, most museums in the city offer free admission.

Finally, get some tips from our current students on the [students@LSE blog](#) on how to enjoy all that London has to offer while living on a student budget.

Useful links for saving money

TOTUM

totum.com

Student Beans

studentbeans.com

UNiDAYS

myunidays.com

LSE Students' Union

lsesu.com

Time Out magazine

timeout.com

Students@LSE

blogs.lse.ac.uk/studentsatlse

The information in this publication can be made available in alternative formats. If required please email prospectuses@lse.ac.uk

©2025

Registered address: The London School of Economics and Political Science, Houghton Street, London WC2A 2AE

Please note that while care has been taken to ensure that the information contained in this brochure is accurate at the time of it being printed, circumstances might have arisen since that time that have caused certain pieces of information to be inaccurate or no longer be relevant.

We're proud to be a diverse, global community who come together to explore, study, discuss and effect change on a wide range of issues through our academic research, educational practices, and rigorous debate. We want to provide an environment where ideas are discussed and debated freely and openly within the law. Commitment to equity, diversity and inclusion is one of our six strategic priorities, as highlighted in LSE's Shaping the World campaign, and "equity of respect and opportunity" is one of the core principles set out in the School's Ethics Code.

For more information, visit: info.lse.ac.uk/staff/divisions/secretarys-division/ethics/ethics-code

Freedom of thought and expression is essential to the pursuit, advancement and dissemination of knowledge. LSE seeks to ensure that intellectual freedom and freedom of expression within the law is secured for all our members and those we invite to the School. Our Code of Practice on Free Speech ("the Code") sets out our Principles, how we shall deliver our duty to secure Freedom of Speech within the law, as far as reasonably practicable, and how we shall secure compliance with the Code.

For more information, visit: info.lse.ac.uk/staff/services/policies-and-procedures/assets/documents/code-of-practice-on-free-speech.pdf

The London School of Economics and Political Science is a School of the University of London. It's a charity and is incorporated in England as a company limited by guarantee under the Companies Acts (Reg no 70527).

Published by: Student Marketing, Recruitment and Admissions, Academic Registrar's Division, LSE

Design: LSE Design Unit

Published: October 2025

Acknowledgements: thanks to all the students who gave their permission for us to publish their photographs in this prospectus.

Please recycle this publication after use.











THE LONDON SCHOOL
OF ECONOMICS AND
POLITICAL SCIENCE ■

130 EST 1895
years

lse.ac.uk/graduate

-  x.com/studylse
-  facebook.com/lseps/
-  tiktok.com/@lse
-  instagram.com/londonschoolofeconomics/
-  [linkedin.com/school/
london-school-of-economics/](https://linkedin.com/school/london-school-of-economics/)
-  youtube.com/user/lsewebsite

The London School of Economics
and Political Science
London, WC2A 2AE

lse.ac.uk/meet-lse