



THE LONDON SCHOOL
OF ECONOMICS AND
POLITICAL SCIENCE ■



LSE Offer Holders' Day

Wednesday 24 April 2024

Welcome to LSE

Congratulations on your offer of admission to LSE! On behalf of the entire School community, I am very pleased to welcome you to our Offer Holders' Day. The purpose of today is to help you learn more about your degree programme, give you a flavour of life at LSE, and show you how and why you'll feel at home in our unique, diverse community.

This programme details the day's events and activities, including times and locations. If you have questions or need more information, just ask one of our Student Ambassadors, who will be happy to assist you. They can also tell you about student life at LSE, so be sure to ask for their candid opinions!

Please ensure that you (and your guest) register in the Cheng Kin Ku Building when you first arrive at the School. After that, you'll be free to enjoy the many Offer Holders' Day events taking place on campus.

I hope that your visit today confirms your decision to study at this very special institution, and that we can welcome you to LSE as a student soon.

Enjoy your day!



Larry Kramer
President and
Vice Chancellor, LSE



Quick links

- [Welcome to LSE](#)
- [Plan your day](#)
- [General events and activities](#)
- [General talks](#)
- [Subject sessions](#)
- [Accommodation tours](#)
- [Food and drink](#)
- [Campus tour](#)
- [Local area map](#)
- [LSE campus map](#)

Share your #LSEOfferHoldersDay experience:



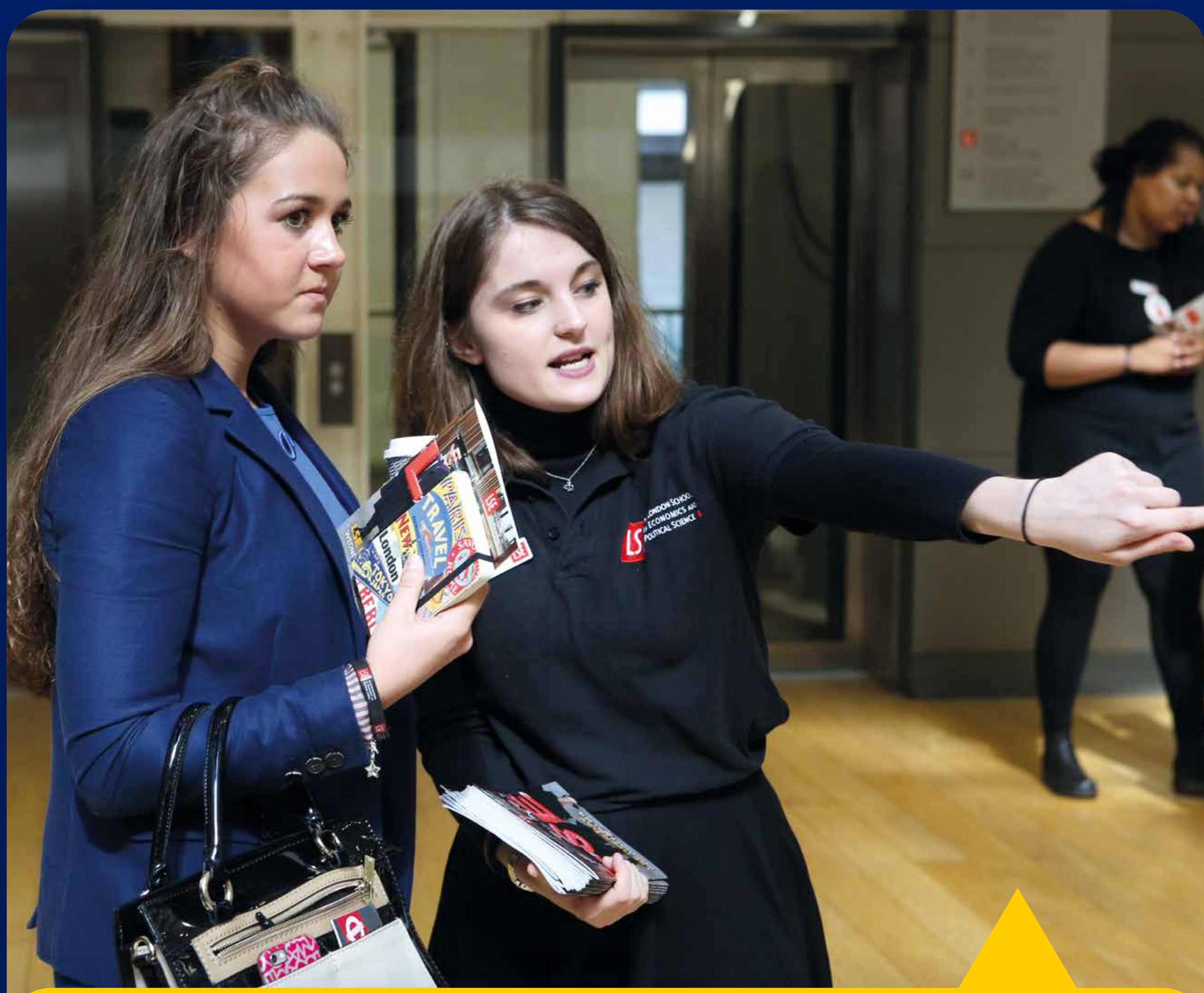
@StudyLSE



@facebook.com/lseps



@londonschoolofeconomics



ASK AN AMBASSADOR

We have a number of current LSE students working at the Offer Holders' Day as Ambassadors. They will be identifiable by their LSE t-shirts. Please ask them if you require directions or have any general questions about the School.



FINDING YOUR WAY AROUND LSE

You can find all LSE buildings using the [Campus Map](#) but if you need help just ask one of our Student Ambassadors or look for the grey signs on the corners of our buildings.

The first digit of each room number indicates what floor it's on. For example, room 6.02 is on the sixth floor.

Plan your day

Wednesday 24 April 2024



| | | | | | | |
|---------|---|---|--|---|---|---|
| 9.30am | Registration 1 Cheng Kin Ku Building (CKK) | Information stands Great Hall, Marshall Building (MAR) | | | | |
| 10am | Registration 2 Cheng Kin Ku Building (CKK) | | Student Life talk Sheikh Zayed Theatre, Cheng Kin Ku Building (CKK) | Study Abroad talk Room CLM.2.02, Clement House (CLM) | | |
| 10.30am | Registration 3 Cheng Kin Ku Building (CKK) | | | | | |
| 11am | Registration 4 Cheng Kin Ku Building (CKK) | | Careers talk Sheikh Zayed Theatre, Cheng Kin Ku Building (CKK) | | Subject Tasters Finance Geography International History Law Philosophy Social Policy | Parents' and Carers' talk Old Theatre, Old Building (OLD) |
| 11.30am | | | | | Various locations | |
| 12 noon | | | Student Life talk Sheikh Zayed Theatre, Cheng Kin Ku Building (CKK) | | | Department drop-ins Finance Geography International History Law Philosophy Social Policy |
| 12.30pm | | | | | Subject Tasters Accounting Economic History Government Languages Management Mathematics | Parents' and Carers' talk Old Theatre, Old Building (OLD) |
| 1pm | | | Careers talk Sheikh Zayed Theatre, Cheng Kin Ku Building (CKK) | Study Abroad talk Room CLM.2.02, Clement House (CLM) | Various locations | |
| 1.30pm | | | | | | Department drop-ins Accounting Economic History Government Languages Management Mathematics |
| 2pm | | | Student Life talk Sheikh Zayed Theatre, Cheng Kin Ku Building (CKK) | | Subject Tasters Anthropology Economics International Relations Psychological and Behavioural Science Sociology Statistics | Parents' and Carers' talk Old Theatre, Old Building (OLD) |
| 2.30pm | | | | Study Abroad talk Room CLM.2.02, Clement House (CLM) | Various locations | |
| 3pm | | | Careers talk Sheikh Zayed Theatre, Cheng Kin Ku Building (CKK) | | | Department drop-ins Anthropology Economics International Relations Psychological and Behavioural Science Sociology Statistics |
| 3.30pm | | Information stands Great Hall, Marshall Building (MAR) | | | | Various locations |
| 4pm | | | | | | |
| 4.30pm | | | | | | Accommodation Tours Bankside House and High Holborn |

SUBJECT TASTERS AND DEPARTMENT DROP-INS

See subject sessions for further information.



[Back to quick links page](#)

General events and activities



REGISTRATION

Ground floor, **Cheng Kin Ku Building (CKK)** –

Kingsway entrance

9.30 – 10am • 10 – 10.30am •

10.30 – 11am • 11 – 11.30am

Please register your attendance on the ground floor of the Cheng Kin Ku Building via the entrance on Kingsway. At registration you will receive an LSE wristband which will act as your visitor pass for the day.

As part of our commitment to minimising the School's impact on the environment we use wristbands made from seeded paper. After today's event plant your wristband and enjoy a floral reminder of your visit!

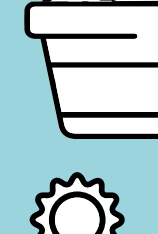
WHERE NEXT? After registration, you are free to attend any of the events taking place during the day.



YOUR OFFER HOLDERS' DAY WRISTBAND IS MADE FROM SEEDED PAPER!



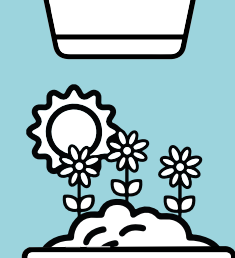
Cover the seeded wristband with a thin layer of soil.



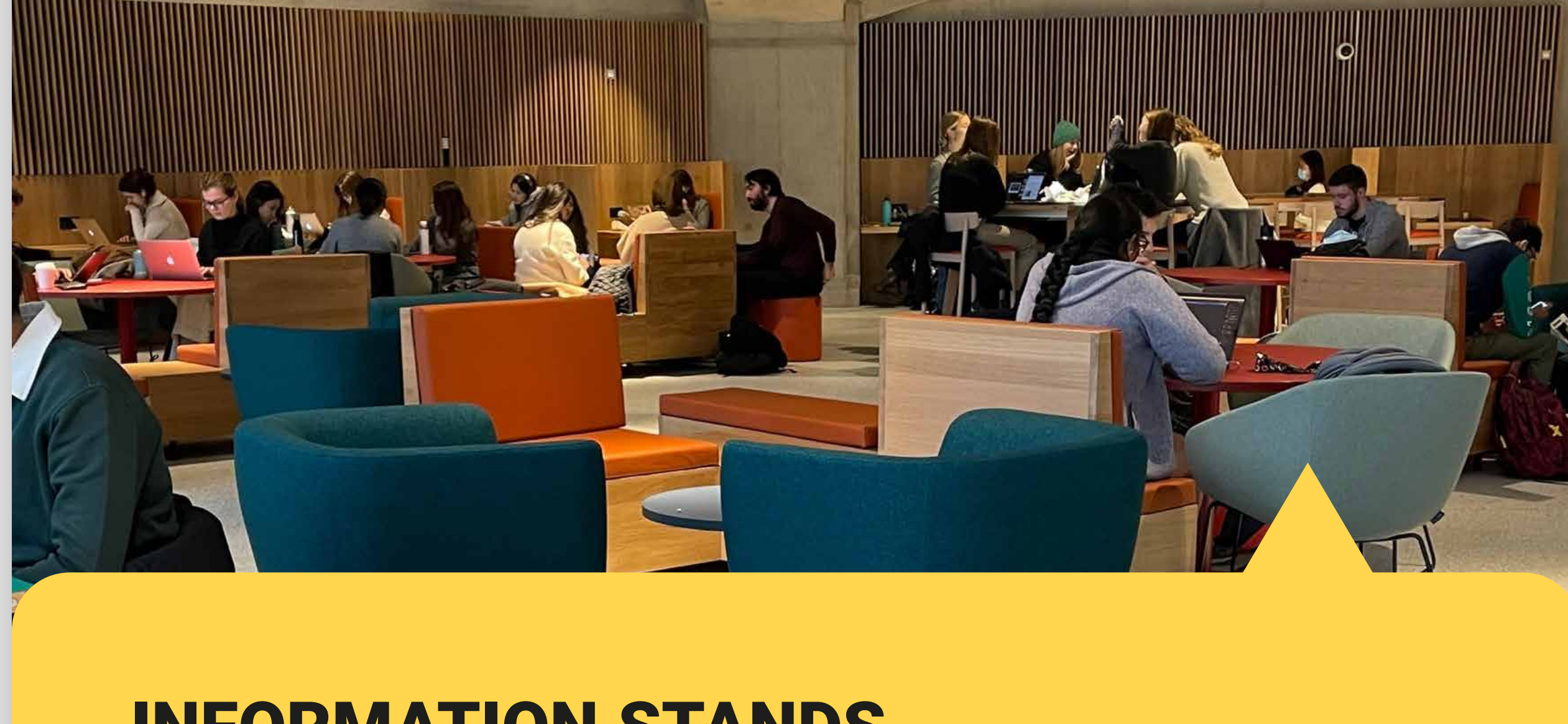
Place in a sunny spot.



Water often.



Watch as wildflowers grow!



INFORMATION STANDS

Great Hall, **Marshall Building (MAR)**

9.30am – 3.30pm

Staff from the departments and support services below will be available throughout the day to answer your questions and provide advice and guidance.

Admissions • Careers • Disability and Wellbeing • Faith Centre • General Enquiries • GO LSE (study abroad) • Language Centre • LSE 100 • LSE LIFE • Residential Services (Student Accommodation) • Scholarships and Financial Support • Students' Union • Volunteer Centre



VISIT THE ALUMNI CENTRE

Centre Building (CBG)

10am – 3pm

A dedicated space on campus for LSE alumni. Visit the Centre and find out more about LSE's global alumni community and how both students and graduates benefit from being part of this network.



VISIT THE GenDen

St Clement's Building (STC)

10am – 3pm

A fully kitted out co-working space, the GenDen is the perfect area on campus to engage with the LSE entrepreneurial community. Find out how LSE Generate supports students and alumni to build socially responsible businesses at each stage of their entrepreneurial journey.



VISIT THE LIBRARY

LSE Library (LRB)

10am-3.30pm

Visit the British Library of Political and Economic Science (LSE Library) and see our current exhibition *A Say in the End of the World: Solidarity and Nuclear Defence in the Cold War* in the Library Gallery.

Drop in between 1.30-3.30pm to meet curators of the archive and see materials that represent the key themes of the collection and tell the story of LSE history.

[Back to quick links page](#)

General talks



STUDENT LIFE TALK

Sheikh Zayed Theatre, Cheng Kin Ku Building (CKK)

10-10.45am • 12 noon – 12.45pm • 2-2.45pm

Hear from the LSE Students' Union and current LSE students about their experiences of student life at LSE and in London.



STUDY ABROAD TALK

Room CLM.2.02, Clement House (CLM)

10.15-10.45am • 1-1.30pm • 2.30-3pm

Hear about the opportunities for you to study abroad during your time at LSE, including through CIVICA – The European University of the Social Sciences.



CAREERS TALK

Sheikh Zayed Theatre, Cheng Kin Ku Building (CKK)

11-11.30am • 1-1.30pm • 3-3.30pm

LSE Careers provides information on their services and careers support for LSE students.



PARENTS' AND CARERS' TALK

Old Theatre, Old Building (OLD)

11-11.45am • 12.30-1.15pm • 2-2.45pm

A session for parents and carers addressing living and studying in London and at LSE, including financial support, accommodation and LSE's support services for students.

[Back to quick links page](#)

Subject sessions

Get a taste of the programme you have applied for in these sessions run by academics in your department. If you have an offer for a joint programme, you are welcome to attend subject sessions for both/all subject areas. **Due to space restrictions, we can only admit offer holders to the subject taster sessions.** Parents, carers and guests can attend the other events taking place at the same time, including the Parents' and Carers' talk and information stands and are welcome to attend the Department drop-ins. Talks will be recorded and available online after the event.



| SUBJECT | TASTER SESSION | DEPARTMENT DROP-IN | LOCATION |
|---|----------------|--------------------|---|
| Accounting | | | |
| BSc Accounting and Finance (NN34) | 12.30-1.30pm | 1.30-2.15pm | Room MAR.1.10, Marshall Building (MAR) |
| Anthropology | | | |
| BA Social Anthropology (L601) BSc Social Anthropology (L603) BA Anthropology and Law (ML16) | 2-3pm | 3-3.45pm | LSE Lecture Theatre, Ground Floor, Centre Building (CBG) |
| Economic History | | | |
| BSc Economic History (V300) BSc Economic History and Geography (V3L7) BSc Economics and Economic History (VL31) | 12.30-1.30pm | 1.30-2.15pm | Yangtze Lecture Theatre, 2nd floor, Centre Building (CBG) |
| Economics | | | |
| BSc Economics (L101) BSc Econometrics and Mathematical Economics (L140) | 2-3pm | 3-3.45pm | Hong Kong Theatre, Clement House (CLM) |
| Finance | | | |
| BSc Finance (N300) | 11am-12pm | 12 noon – 12.45pm | Room MAR.1.06, Marshall Building (MAR) |
| Geography and Environment | | | |
| BSc Environment and Sustainable Development (FK84) BSc Environment and Sustainable Development with Economics (F9L1) BA Geography (L702) BSc Geography with Economics (L7L1) | 11am-12pm | 12 noon – 12.45pm | Hong Kong Theatre, Clement House (CLM) |
| Government | | | |
| BSc Politics (L230) BSc Politics and Data Science (L2G3) BSc Politics and Economics (LL12) BSc Politics and International Relations (L290) BSc Politics and Philosophy (LV25) | 12.30-1.30pm | 1.30-2.15pm | The Malaysia Auditorium, Basement, Centre Building (CBG) |
| International History | | | |
| BA History (V146) BSc History and Politics (LV21) BSc International Relations and History (VL12) | 11am-12pm | 12 noon – 12.45pm | Room CLM.3.02, Clement House (CLM) |
| International Relations | | | |
| BSc International Relations (L250) | 2-3pm | 3-3.45pm | Room CBG.1.06, Centre Building (CBG) |
| Languages | | | |
| BSc International Relations and Chinese (L2T1) BSc Language, Culture and Society (L3R9) | 12.30-1.30pm | 1.30-2.15pm | Room MAR.2.06, Marshall Building (MAR) |
| Law | | | |
| LLB Bachelor of Laws (M100) | 11am-12pm | 12 noon – 12.45pm | Taster: Wolfson Theatre, Cheng Kin Ku Building (CKK) Drop in: Law School common room, 5th floor, Cheng Kin Ku Building (CKK) |
| Management | | | |
| BSc Management (N200) | 12.30-1.30pm | 1.30-2.15pm | Room MAR.1.04, Marshall Building (MAR) |
| Mathematics | | | |
| BSc Financial Mathematics and Statistics (GN13) BSc Mathematics with Data Science (G140) BSc Mathematics and Economics (GL11) BSc Mathematics with Economics (G1L1) | 12.30-1.30pm | 1.30-2.15pm | Room CLM.4.02, Clement House (CLM) |
| Philosophy | | | |
| BSc Philosophy, Logic and Scientific Method (V503) BSc Philosophy and Economics (LV15) BSc Philosophy, Politics and Economics (LOV0) | 11am-12pm | 12 noon – 12.45pm | Room MAR.2.08, Marshall Building (MAR) |
| Psychological and Behavioural Science | | | |
| BSc Psychological and Behavioural Science (C800) | 2-3pm | 3-3.45pm | Room MAR.2.05, Marshall Building (MAR) |
| Social Policy | | | |
| BSc International Social and Public Policy (L400) BSc International Social and Public Policy and Economics (LLK1) BSc International Social and Public Policy with Politics (LL42) | 11am-12pm | 12 noon – 12.45pm | Room MAR.2.04, Marshall Building (MAR) |
| Sociology | | | |
| BSc Sociology (L301) | 2-3pm | 3-3.45pm | Room MAR.2.04, Marshall Building (MAR) |
| Statistics | | | |
| BSc Actuarial Science (N321/N322) BSc Data Science (N3UD) BSc Mathematics, Statistics, and Business (G0N0) | 2-3pm | 3-3.45pm | Room MAR.1.08, Marshall Building (MAR) |

[Back to quick links page](#)

Accommodation tours

Two of our halls of residence are open for you to view at the Offer Holders' Day from 11am – 4.30pm. Visit either Bankside House or High Holborn Residence for a guided tour led by LSE students.



GETTING TO BANKSIDE HOUSE

[24 Sumner Street, London, SE1 9JA](#)

Bankside House is near the south bank of the Thames, close to Shakespeare's Globe Theatre and directly behind the Tate Modern art gallery.

The residence is a **25 minute walk** from LSE (see [Local area map](#) to plan your route).



GETTING TO HIGH HOLBORN RESIDENCE

[178 High Holborn, London WC1V 7AA](#)

High Holborn is situated at the heart of London's Theatreland, close to Covent Garden, Oxford Street and Soho.

The residence is a **10 minute walk** from LSE (see [Local area map](#) to plan your route).

For more information about LSE accommodation visit the Residential Services information stand in the Marshall Building or see lse.ac.uk/accommodation

[Back to quick links page](#)

Food and drink

Location of food and drink on campus.



 LSE under construction


 Water fountains*

 Eat your own

 Cafes

 Pubs/Bars

 Restaurants

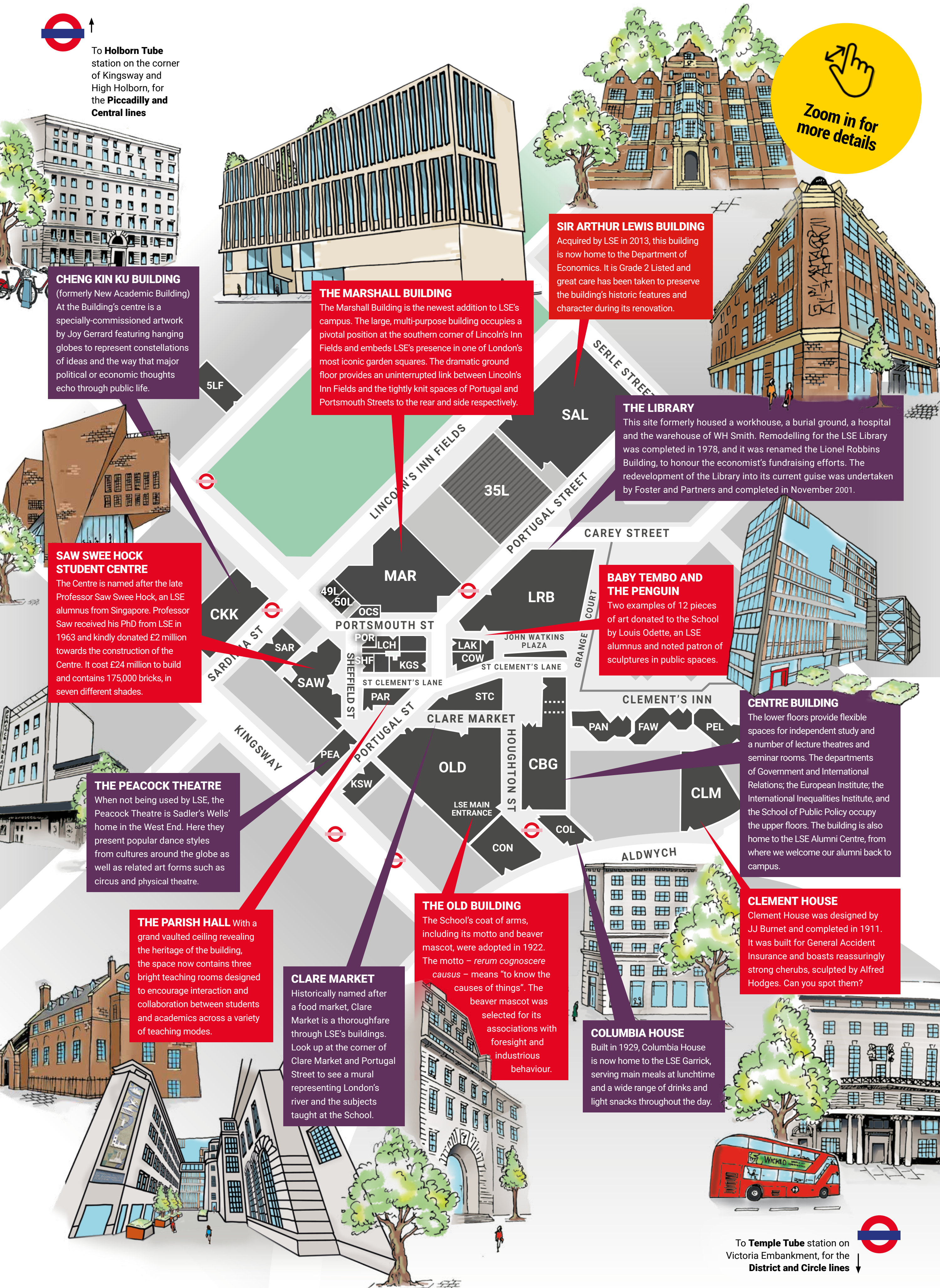
 Free hot drinks
(just show your wristband)

* Please bring a water bottle with you and fill up at the water fountains provided.

[Back to quick links page](#)

Explore the campus

At the Offer Holders' Day, you are free to explore the LSE campus at your leisure using this self-guided tour and the [LSE campus map](#). The tour begins at the main entrance to the Old Building on Houghton Street.



To **Holborn Tube** station on the corner of Kingsway and High Holborn, for the **Piccadilly and Central** lines



CHENG KIN KU BUILDING
(formerly New Academic Building)
At the Building's centre is a specially-commissioned artwork by Joy Gerrard featuring hanging globes to represent constellations of ideas and the way that major political or economic thoughts echo through public life.

THE MARSHALL BUILDING
The Marshall Building is the newest addition to LSE's campus. The large, multi-purpose building occupies a pivotal position at the southern corner of Lincoln's Inn Fields and embeds LSE's presence in one of London's most iconic garden squares. The dramatic ground floor provides an uninterrupted link between Lincoln's Inn Fields and the tightly knit spaces of Portugal and Portsmouth Streets to the rear and side respectively.

SIR ARTHUR LEWIS BUILDING
Acquired by LSE in 2013, this building is now home to the Department of Economics. It is Grade 2 Listed and great care has been taken to preserve the building's historic features and character during its renovation.

THE LIBRARY
This site formerly housed a workhouse, a burial ground, a hospital and the warehouse of WH Smith. Remodelling for the LSE Library was completed in 1978, and it was renamed the Lionel Robbins Building, to honour the economist's fundraising efforts. The redevelopment of the Library into its current guise was undertaken by Foster and Partners and completed in November 2001.

SAW SWEE HOCK STUDENT CENTRE
The Centre is named after the late Professor Saw Swee Hock, an LSE alumnus from Singapore. Professor Saw received his PhD from LSE in 1963 and kindly donated £2 million towards the construction of the Centre. It cost £24 million to build and contains 175,000 bricks, in seven different shades.

BABY TEMBO AND THE PENGUIN
Two examples of 12 pieces of art donated to the School by Louis Odette, an LSE alumnus and noted patron of sculptures in public spaces.

THE PEACOCK THEATRE
When not being used by LSE, the Peacock Theatre is Sadler's Wells' home in the West End. Here they present popular dance styles from cultures around the globe as well as related art forms such as circus and physical theatre.

CENTRE BUILDING
The lower floors provide flexible spaces for independent study and a number of lecture theatres and seminar rooms. The departments of Government and International Relations; the European Institute; the International Inequalities Institute; and the School of Public Policy occupy the upper floors. The building is also home to the LSE Alumni Centre, from where we welcome our alumni back to campus.

THE PARISH HALL With a grand vaulted ceiling revealing the heritage of the building, the space now contains three bright teaching rooms designed to encourage interaction and collaboration between students and academics across a variety of teaching modes.

CLARE MARKET
Historically named after a food market, Clare Market is a thoroughfare through LSE's buildings. Look up at the corner of Clare Market and Portugal Street to see a mural representing London's river and the subjects taught at the School.

THE OLD BUILDING
The School's coat of arms, including its motto and beaver mascot, were adopted in 1922. The motto – *rerum cognoscere causas* – means "to know the causes of things". The beaver mascot was selected for its associations with foresight and industrious behaviour.

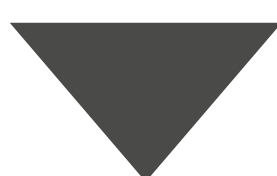
CLEMENT HOUSE
Clement House was designed by JJ Burnet and completed in 1911. It was built for General Accident Insurance and boasts reassuringly strong cherubs, sculpted by Alfred Hodges. Can you spot them?

COLUMBIA HOUSE
Built in 1929, Columbia House is now home to the LSE Garrick, serving main meals at lunchtime and a wide range of drinks and light snacks throughout the day.

To **Temple Tube** station on Victoria Embankment, for the **District and Circle** lines



Scroll down to take the tour.



Tour

At the Offer Holders' Day, you are free to explore and discover LSE's compact campus at your leisure using this self-guided tour.

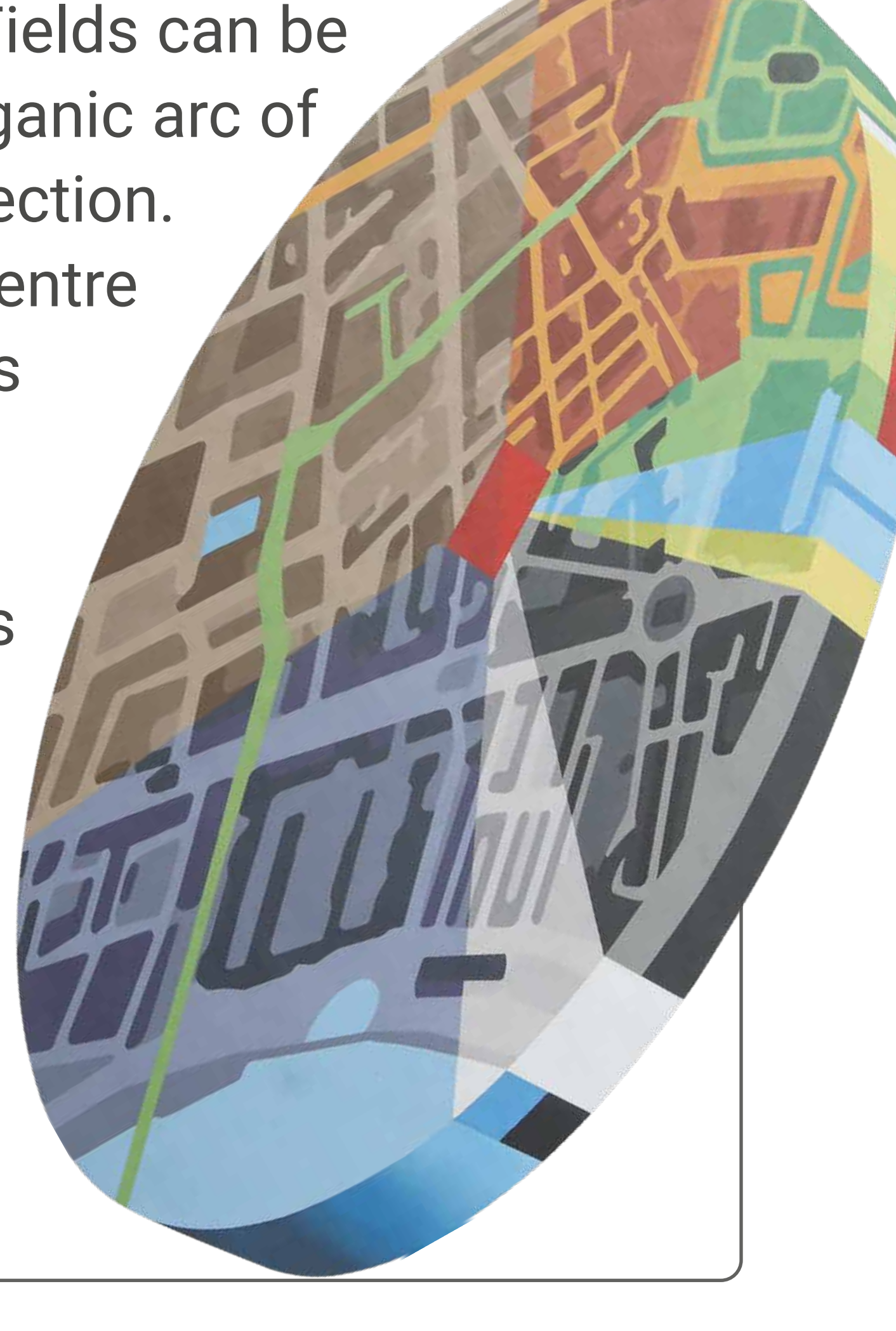
1 Old Building

Begin your tour outside the Old Building. In 1920 King George V laid the foundation stone by the main entrance of what remains the heart of LSE's campus. Look up and you will see "Final Sale", an installation created by the Recycle Group dealing with consumerism, recycling imagery and materials. Today the Old Building is home to one of the School's principal lecture theatres (the Old Theatre); the Shaw Library (a restful space with a lending collection of general literature and recorded music, daily newspapers and magazines and regular lunchtime concerts); a large restaurant, and the Student Services Centre.



Walk down Houghton Street, keeping the Old Building on your left. Cross LSE Square, noting the mural above you on the wall of the St. Clement's Building

Spectra, by artist Tod Hanson, is a five-storey-high artwork intended to illustrate the first priority in LSE's 2030 Strategy, "educate for impact", through a spectrum of ideas, locations, buildings and analytical methodologies. The Booth Poverty Map acts as the starting point for the artwork. Part of LSE Library's archive of Charles Booth's "Inquiry into the Life and Labour of the People in London" (1886-1903), the section of map the artwork focuses on depicts the area of London LSE occupies. The form of Lincoln's Inn Fields can be seen at the top and the organic arc of the Thames in the lower section. In an approximation of a centre point, a red square denotes LSE's Centre Building. The artwork's elliptical form is distorted through Hanson's use of trompe l'oeil – from certain vantages the disc will appear to be three dimensional, sinking into or rising from St Clement's Wall.



Continue up the ramp into John Watkins Plaza. The LSE Library is now in front of you.

2 The British Library of Political and Economic Science

The British Library of Political and Economic Science (LSE Library) was founded in 1896 and houses many world class collections on the themes of women's equality and rights, LGBT+ equality and rights, peace and internationalism, Britain's relationship with the European Union, development of left-wing thought, and poverty and welfare.

In 2013, LSE Library became custodians of The Women's Library, the oldest and largest library in Britain devoted to the history of women's campaigning and activism which follows the history of feminism from the late 19th century to the present day.

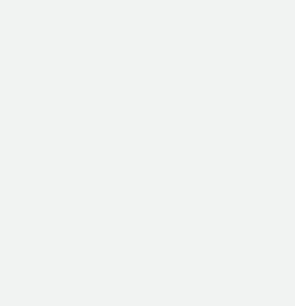
The Library is also home to LSE LIFE. LSE LIFE is a place where you can learn more about yourself, your studies and your ambitions. They offer workshops, one-to-one sessions and other unique events to help you discover your strengths, develop your skills and bring them together to reach your goals.



With the Library in front of you, turn left and walk toward Portugal Street. Turn right and walk along Portugal Street until it meets Serle Street. Turn left and walk a short way along Serle Street, then turn left again into Lincoln's Inn Fields. On your left is the Sir Arthur Lewis Building.

3 Sir Arthur Lewis Building

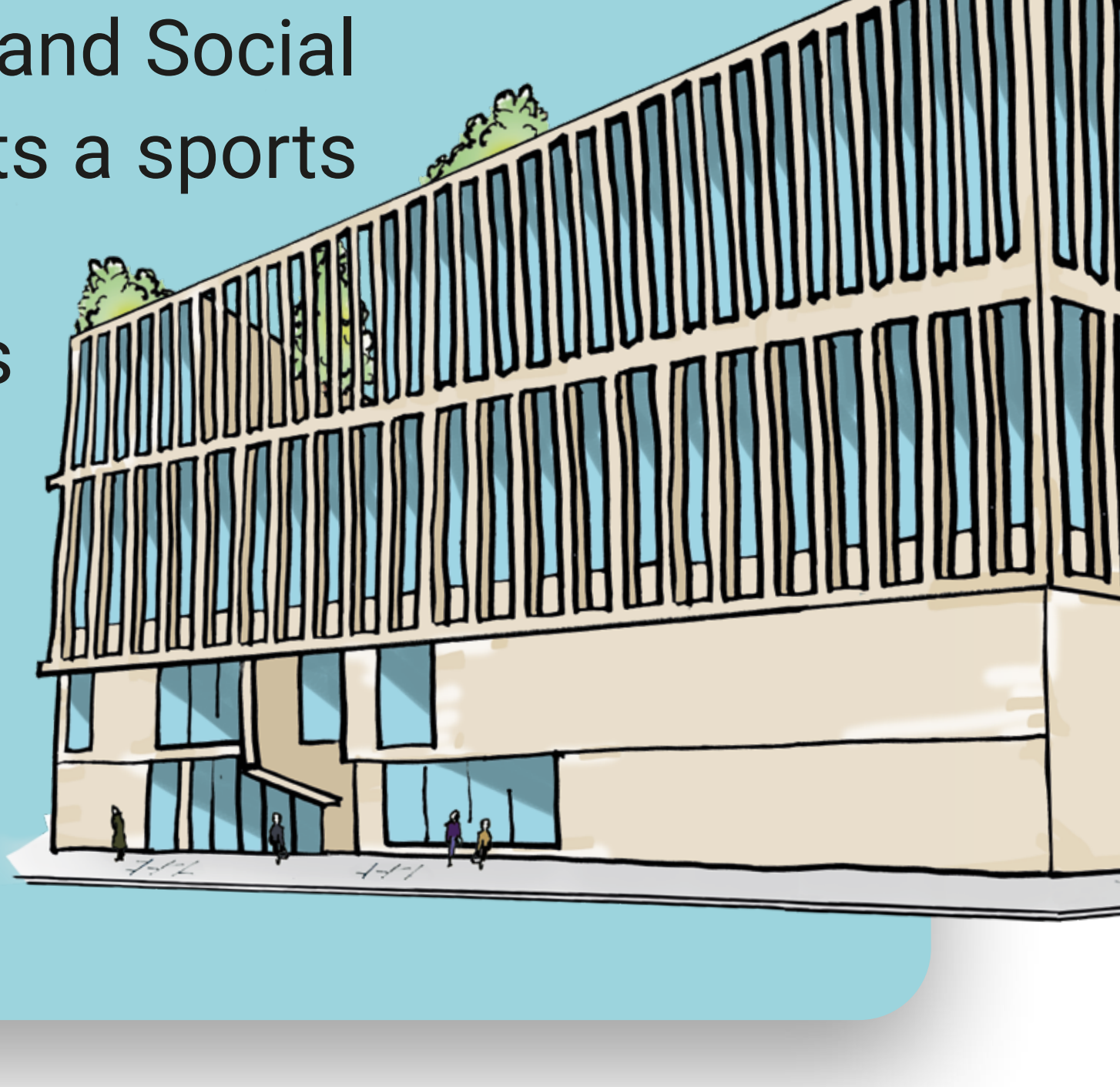
LSE converted the former Land Registry Building into 32 Lincoln's Inn Fields in 2013. In March 2023, it was renamed the Sir Arthur Lewis Building in honor of the Nobel Prize winning Economist, LSE's first black academic and the UK's first black professor. Enjoying views over the UK's largest city square, the Building is home to the Department of Economics and offers five floors of academic offices plus three lower floors of teaching and student activity areas, which can cater for up to 1,000 students.



Continue west, passing LSE's most recent acquisition, 35 Lincoln's Inn Fields (the Firoz Lalji Global Hub), until you reach the Marshall Building, on your left-hand side, just before the junction with Portsmouth Street.

4 The Marshall Building

The Marshall Building, completed in January 2022, delivers an additional 18,000 square metres of space and serves as a link between the buildings around Houghton Street and those in Lincoln's Inn Fields. The Building is home to the departments of Accounting, Finance and Management as well as the Marshall Institute for Philanthropy and Social Entrepreneurship. It boasts a sports centre with multipurpose sports hall, squash courts and dynamic weights room; arts rehearsal facilities and music practice rooms, and a café - Beaver's Brew.

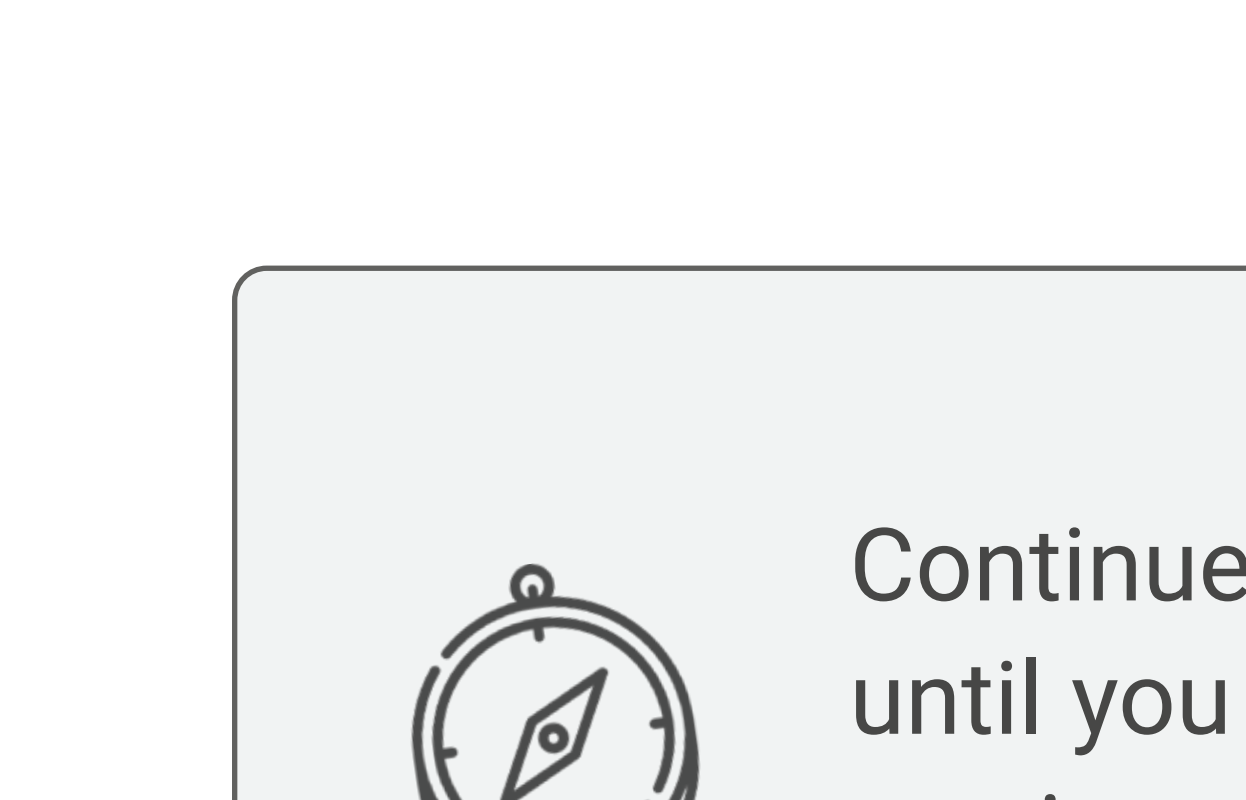


Walk on, crossing Portsmouth Street and immediately turning right to cross Sardinia Street. You are now outside LSE's Cheng Kin Ku Building.

5 Cheng Kin Ku Building

The Cheng Kin Ku Building was opened as the New Academic Building in 2008 and renamed in June 2023.

It houses the LSE Law School, the Department of Geography and Environment and boasts eight floors of teaching rooms, lecture theatres and offices, built around a soaring central atrium flooded with natural light.



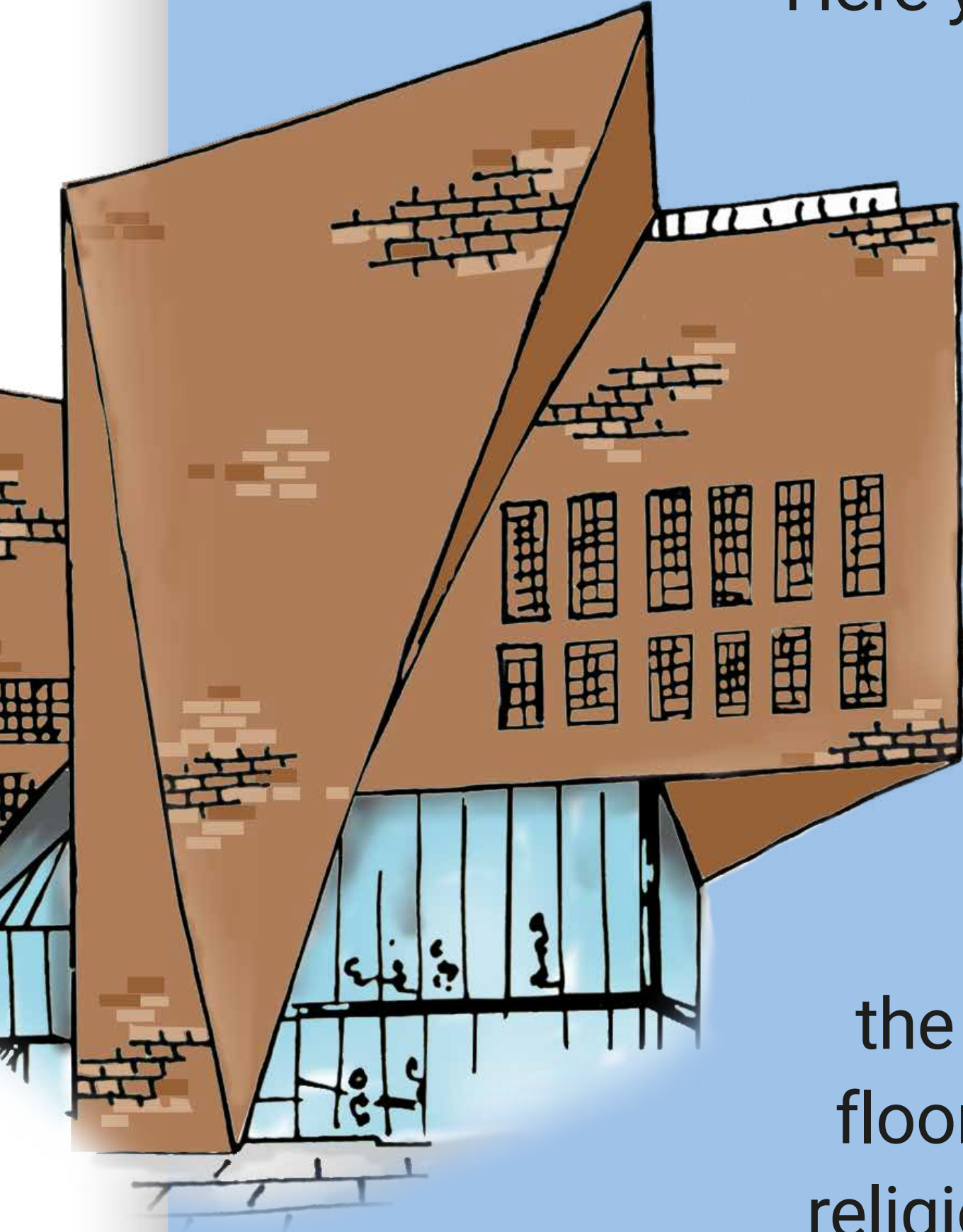
Continue further along Sardinia Street until you reach Kingsway. Above you is an artwork by Richard Wilson called "Square the Block". Return back along Sardinia Street and turn right into Portsmouth Street. On your left you will see the Old Curiosity Shop and on your right the Saw Swee Hock Student Centre.

6 Saw Swee Hock Student Centre

Since opening in 2014, the Student Centre has won a host of architecture awards, including the prestigious RIBA London Building of the Year Award 2014. The building is a student hub and houses the LSE Students' Union and a large venue space.

Here you will find a pub, a fitness centre and LSE Careers.

The Student Centre is also home to the LSE Media Centre, which includes LSE's Pulse Radio, its weekly newspaper (*The Beaver*) and its termly journal (*The Clare Market Review*). You can visit the Faith Centre on the 2nd floor, home to LSE's diverse religious activities and a quiet, reflective space of all faiths and none.



With the Student Centre in front of you turn left and walk to Portugal Street, passing "The World Turned Upside Down", a sculpture by the Turner Prize-winning artist Mark Wallinger. Turn right on Portugal Street, where you will find the Peacock Theatre.

7 Peacock Theatre

LSE uses this 999 seat West End theatre for lectures, public talks, conferences and graduation ceremonies.



Turn around and walk back along Portugal Street, turning right down Clare Market.

8 Clare Market

On your right is the Student Services Centre, which brings together LSE's student support services, with drop-in sessions for prospective students, immigration and fee queries each week.

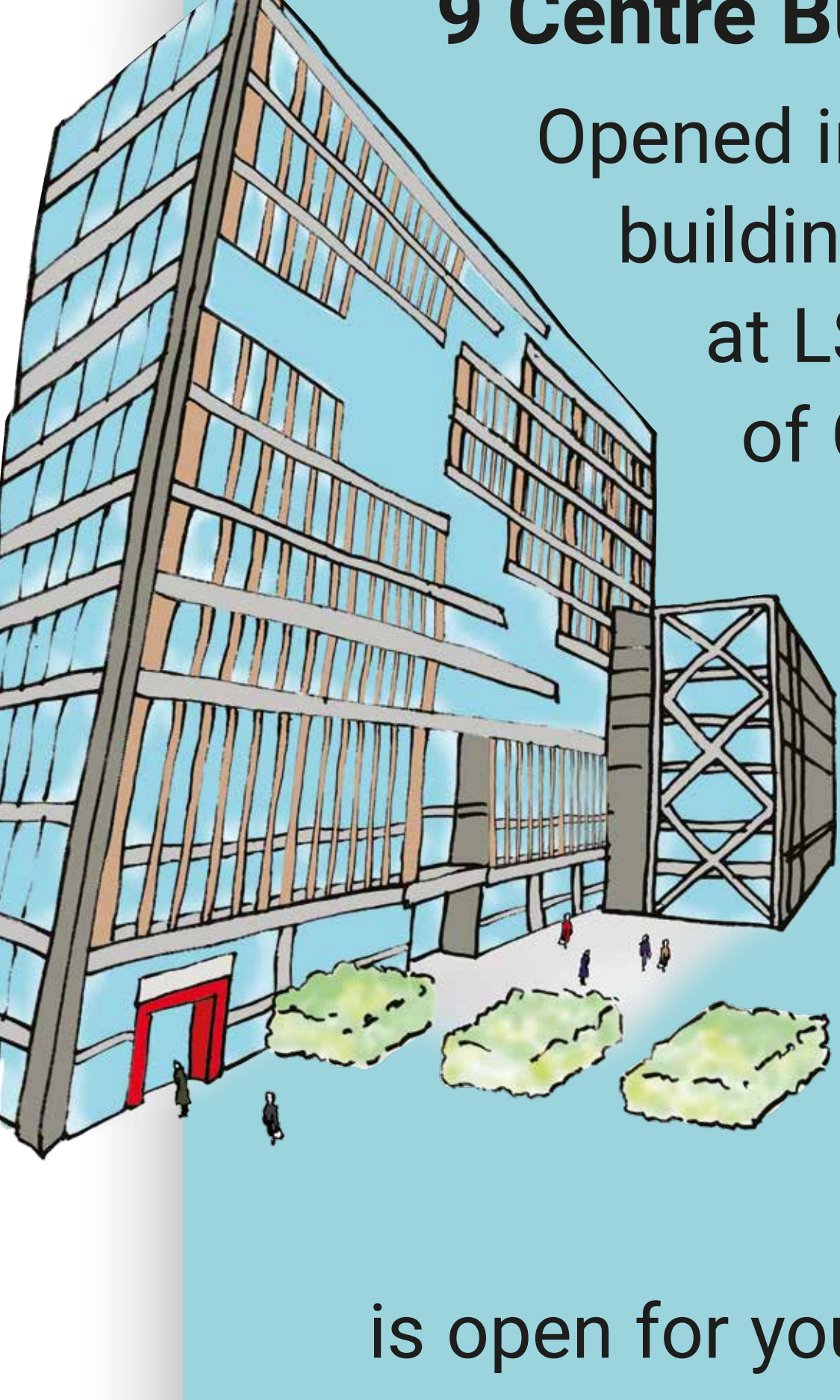
On your left is the GenDen, a co-working space for LSE's entrepreneurial community. Visit the GenDen today to learn more about LSE Generate.



Continue forward into LSE square. You will see the Centre Building in front of you, with the entrance on your right.

9 Centre Building

Opened in June 2019, this 13 storey building is home to political sciences at LSE, housing the departments of Government and International Relations, the European Institute and the School of Public Policy. It provides students with flexible study and teaching space and includes a cafe on the ground floor. The Centre Building is also home to the Alumni Centre, which is open for you to visit and hear how LSE supports students after graduation.



Walk through the pedestrian passage, next to the Alumni Centre, and down the steps into Clement's Inn.

10 Clement's Inn

Clement's Inn is home to Pankhurst House, Fawcett House and Pethick-Lawrence House, renamed in 2018 after the suffrage campaigners Emmeline Pankhurst, Millicent Garrett Fawcett and Emmeline Pethick-Lawrence.

The three buildings are on the same site as the London headquarters of the Women's Social and Political Union, also known as "The Suffragettes". You will see a plaque marking this on the wall next to the entrance to Pethick-Lawrence House. This is also home to the St Philips Medical Centre, providing NHS treatment to LSE students.



Continue along Clement's Inn and through the gate at the end, leading out onto the Aldwych. Turn right and follow the pavement round until you come to Clement House, on your right.

11 Clement House

Clement House was built in 1911, and acquired by LSE in the mid 1990's. On the ground floor is the Hong Kong Theatre, which is used for both academic and public lectures.



Continue on the Aldwych until you reach Houghton Street on your right.

12 LSE Garrick

On the corner of Houghton Street and the Aldwych is LSE Garrick. The ground floor of this café serves a variety of hot and cold drinks, sandwiches and snacks while the lower floor offers a main meal service. It makes an ideal place to rest at the end of your tour.



You have now explored LSE!

[Back to quick links page](#)

Local area map

What's in the area surrounding LSE and walking routes to our accommodation tours.

View on [Google Maps](#).



LSE Travel Fund

You may be eligible for reimbursement of some or all of your travel expenses to attend today's Offer Holders' Day. See [LSE Travel Fund](#) for further information and eligibility criteria.

[Back to quick links page](#)

LSE campus map

Your Offer Holders' Day locations at a glance.

View on [Google Maps](#).



-  LSE Offer Holders' Day venues
-  LSE building
-  LSE building development
-  Information
-  Cycle hire station
-  Meeting point for family and friends
-  Quiet space - Faith Centre, 2nd floor, SAW

Accessibility

LSE aims to create an environment that enables all students to participate fully in university life. All rooms and buildings at the Offer Holders' Day are accessible, and most rooms and lecture theatres are fitted with infra-red hearing systems. Access guides to the School's buildings are available at [AccessAble.co.uk](#)



[Back to quick links page](#)



THE LONDON SCHOOL
OF ECONOMICS AND
POLITICAL SCIENCE ■

LSE Offer Holders' Day

Wednesday 24 April 2024

KEEP IN TOUCH

 [@StudyLSE](#)

 facebook.com/lseps

 [@londonschoolofeconomics](#)

 youtube.com/lsewebsite

 tiktok.com/@lse

 blogs.lse.ac.uk/studentsatlse/

 lse.ac.uk/ask-LSE

[Back to quick links page](#)