

# Bangladesh



FROM TOP LEFT: BANGLADESHI WOMAN, DHAKA ©E.L.CORONADO/DREAMSTIME; SARI WOVEN AT SONARGOAN ©P.K. NIYOGI/WIKIPEDIA; BOATS ON THE BHOIRAB RIVER ©ASHRAFULALAM/DREAMSTIME; PARLIAMENT HOUSE OF BANGLADESH ©T. TAHMID/DREAMSTIME

“



‘Macro Credits’ – the South Asia Centre’s Bangladesh programme, underlines our belief in telling a new story beyond micro-credit finance, ready-made garments, labour, and climate change to highlight Bangladesh’s strengths and successes. Our shared vision of building capacity, creating opportunity and developing infrastructure will serve as a common starting-point, and reposition debates on Bangladesh.

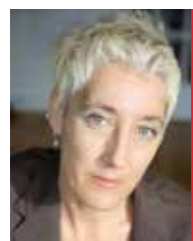
**Dr Mukulika Banerjee**, Director, South Asia Centre



FROM LEFT: FRUIT SELLER ©M.A.K. CHOUDHURY/DREAMSTIME; UNITY, PEACE AND FREEDOM SCULPTURE ©S.A.F. KHAN/DREAMSTIME; WOMEN BEING EDUCATED IN NUTRITION ©SJORS737/DREAMSTIME; BOYS PLAYING CRICKET ©SJORS737/DREAMSTIME

## South Asia Centre

Established in 2015, the South Asia Centre marks a step-change in LSE's engagement with Bangladesh and the wider region. LSE has more than 80 subject experts whose teaching and research interests concern South Asia: the Centre harnesses this world class inter- and multi-disciplinary expertise to underwrite the School's fundamental mission of impacting public awareness through informed knowledge. We are proud to count among our faculty Professors Katy Gardner, Naila Kabeer and David Lewis who are world-leading experts on Bangladesh, along with several Fellows, doctoral and graduate students currently conducting research on Bangladesh – on social policy, gender, development, culture, cuisine, political economy, and anthropology, amongst other issues.



**Katy Gardner**  
Professor of Anthropology  
Head of Department



**Naila Kabeer**  
Professor of Gender and  
Development at  
the Gender Institute



**David Lewis**  
Professor of Social Policy  
and Development  
Head of Department

The South Asia Centre is committed to engage with all sectors of society through capacity-building collaborations, research activities and events both in Bangladesh and in the United Kingdom. All activities of the Centre focus on public engagement and impact, human and skills development, and the creation of a global platform to engage with South Asia — whose particularities constantly challenge social science thinking about the region. Bangladesh figures prominently on this map as one of the most complex countries in the region: a dynamic democracy challenged with a political past of military rule; a volatile economy heavily dependent on exports and foreign investments; a geo-strategic nation subject to the whims of richer nations whose callousness has made the country vulnerable to global warming; a strident youth made fragile by the rise of conservative Islam — in short, a complex powerhouse in an important geo-political area in what promises to be the Asian century.

## Bangladesh: Macro Credits

There is currently no academic research programme focused on contemporary Bangladesh in the UK. The South Asia Centre is committed to develop a dedicated community of researchers to examine issues of concern in modern-day Bangladesh, making the Centre the hub for Bangladesh-related events and research in the UK & Europe.

Establishing a new programme on Bangladesh that breaks new ground is a formidable challenge. Most current research focuses on issues of development, ready-made garments & the economy, export fragility, gender violence, climate, and more recently, extremism. The South Asia Centre seeks to

The **International Growth Centre** aims to promote sustainable growth in Bangladesh by providing high quality, independent, demand-led research and policy advice; current priority areas include macroeconomic management, equity & growth, urban infrastructures & transport, mobile banking, gender & empowerment, and agriculture.

**Adnan Khan**, Research and Policy Director; **Sultan Hafeez Rahman**, Country Director; **Wahiduddin Mahmud**, Country Advisor; **Farria Naeem**, Country Economist; **Fahad Khalil**, Lead Academic; **Ahmed Mushfiq Mobarak**, Lead Academic

[theigc.org/country/bangladesh](http://theigc.org/country/bangladesh)  
[bangladesh@theigc.org](mailto:bangladesh@theigc.org)

incorporate all these concerns into a wider programme that at once acknowledges the current challenges confronting Bangladesh, and looks to the future to explore new, interdisciplinary arenas of research. Most importantly, the Centre wants to reach out to experts in Bangladesh with grassroots experience to create a more informed and bottom-upwards approach to understanding the complex problems that confront the nation today.

### Select themes include:

- Youth & Capacity-Building
- Democracy & Populist Futures
- Living Heritage & Sustainable Livelihoods
- Food & Energy Security
- Urbanisation & the Middle Class
- Citizenship, Diaspora & Identity
- Aspirational Bangladesh
- Bangladesh between South Asia & Southeast Asia

The Bangladesh programme will comprise multiple elements of cross-cutting research and academic enterprise, including

- focused research themes and clusters;
- visiting Professorships and Senior Fellowships;
- Junior Fellowships;
- seminars, conferences, public lectures and other academic events;
- diffusion programmes for visiting students from Bangladesh.

The Centre also aims to work with private institutions, international organisations, non-government organisations, and individuals to develop capacity for leadership amongst new-age, younger generation Bangladeshis; create international networks of academics, business leaders and community professionals to link-up and debate Bangladesh globally; develop policy-focused analysis; and curate collaborative events in the UK and in Bangladesh.

A central aim of the South Asia Centre is to engage with the central and local governments through capacity-building initiatives and research-based policy planning.

### Practitioners-in-Residence

The South Asia Centre is currently developing a six-week residential scheme for serving officers of the Ministry of Foreign Affairs, Government of Bangladesh to be based at the South Asia Centre in LSE and develop a research paper on Bangladesh's emerging relations in the new international order.

### Bangladesh in the UK

The Centre will work closely with the High Commission of Bangladesh in London to develop a programme of events focusing on different aspects of modern Bangladesh.

### Supporting 'Bangladesh: Macro Credits'

To curate and sustain our Bangladesh programme, the Centre needs to raise funds in committed donations and endowments to drive innovative, cutting-edge research, payable through serial deposits over the years. You can support any part of Bangladesh: Macro Credits by making a donation of any amount to the South Asia Centre. Your name will be associated with your sponsorship, will appear in all related publicity materials, and will be included in the Annual Report.

Please write to Dr Mukulika Banerjee, Director, South Asia Centre at [southasiacentre@lse.ac.uk](mailto:southasiacentre@lse.ac.uk) for further information.

### CELEBRATING BANGLADESH

To celebrate LSE's engagement with Bangladesh, the South Asia Centre is planning the first-ever **LSE Bangladesh Summit** in Dhaka in 2017, which will bring global experts to Bangladesh in a 2-day event of dialogue and debate.

## LSE and Bangladesh

LSE has had a long and rewarding relationship with Bangladesh, attracting some of its best minds to come here to study, and in turn enrich the institution with their own energy. This mutual exchange has several important markers in LSE's proud history with Bangladesh: amongst our prominent alumni are Mr Abul FATEH (distinguished diplomat & first Foreign Secretary), Mr Mustafa KAMAL (former Chief Justice of Bangladesh), Mushtaque CHOWDHURY (Vice President, BRAC), and Imran RAHMAN (Vice Chancellor, ULAB). Applications from prospective students in Bangladesh continue to show a steady increase; in 2015-16, we received more than 80 applications for admission.

### RECENT VISITS & EVENTS (2015–16)

- Hon. High Commissioner of Bangladesh to the UK HE M. Hannan (pictured, on left).
- Panel discussion on 'Tales of the Unexpected: Gender Equality & Social Progress in Bangladesh' (with Nobel Laureate Amartya Sen, Juli Huang, Naila Kabeer, David Lewis).
- Conversation on *The Colonel Who Would Not Repent: The Bangladesh War & Its Unquiet Legacy* (with author Salil Tripathi and journalist Martin Woollacott, who covered the 1971 War of Independence for *The Guardian*).
- Book Discussion on Nayanika Mookherjee's *The Spectral Wound: Sexual Violence, Public Memories and the Bangladesh War of 1971*.





**Dr Mukulika Banerjee**  
Director

**Dr Nilanjan Sarkar**  
Deputy Director

**Mr Tim Aldcroft**  
Administrator

**Ms Sonali Campion**  
Editor, 'South Asia @ LSE'

### **South Asia Centre**

The London School of Economics and  
Political Science  
Houghton Street  
London WC2A 2AE  
United Kingdom

**[lse.ac.uk/southasia](https://lse.ac.uk/southasia)**  
**+44 (0)20 7107 5330**  
**[southasiacentre@lse.ac.uk](mailto:southasiacentre@lse.ac.uk)**

 **[@SAsiaLSE](https://twitter.com/SAsiaLSE)**

 **[blogs.lse.ac.uk/southasia](https://blogs.lse.ac.uk/southasia)**

 **[facebook/lseouthasia](https://facebook.com/lseouthasia)**

### **LSE Institute of Global Affairs**

The South Asia Centre is a part of the LSE Institute of Global Affairs.

The Institute of Global Affairs offers a space dedicated to cutting-edge research, policy engagement and teaching across multiple disciplines to pioneer inclusive and locally-rooted responses to global challenges.

**[lse.ac.uk/iga](https://lse.ac.uk/iga)**

The London School of Economics and Political Science of the University of London is a charity and is incorporated in England as a company limited by guarantee under the Companies Act (Registration Number 70527). The London School of Economics and Political Science Inland Revenue Number issued by HMRC is x2401.