



THE LONDON SCHOOL
OF ECONOMICS AND
POLITICAL SCIENCE ■



SOUTHEAST ASIA

Research at LSE ■

ANNUAL REPORT
2018/19

SAW SWEE HOCK SOUTHEAST ASIA CENTRE



CONTENTS

MESSAGE FROM THE DIRECTOR	1
OPERATIONAL STRATEGIES	2
Capacity building	2
Open platform for critical debate	2
Agenda setting	3
PEOPLE AT THE CENTRE	4
LSE-SOUTHEAST ASIA EARLY CAREER RESEARCHER (ECR) NETWORK	5
RESEARCH ACTIVITIES	7
SEAC Research Focus	7
SEAC Research Projects	8
Academic Workshops	9
SEAC Research Fund	10
New funded schemes launched in 2018/19	11
PUBLIC ENGAGEMENT	12
Public Events in the academic year of 2018/2019	12
STUDENT ENGAGEMENT AND COLLABORATION	15
ONLINE ENGAGEMENT	16
LSE SOUTHEAST ASIA FORUM	17
NETWORK BUILDING	18
FOUNDING GIFT	19
LONDON SCHOOL OF ECONOMICS AND POLITICAL SCIENCE	20
LSE students from Southeast Asia in 2018/19	20

MESSAGE FROM THE DIRECTOR



It is with great pleasure that I write to report on developments and future plans for the Saw Swee Hock Southeast Asia Centre (SEAC).

SEAC endeavours to build up an Asia research community and to operate as LSE's gateway to understanding Southeast Asia. This involves the Centre's continued efforts to achieve three goals: (a) pushing the boundaries of Southeast Asia research; (b) building a global network of exceptional Southeast Asia scholars; and (c) promoting dialogue and engagement. SEAC's activities are being streamlined to maximise the Centre's profile and potential as a research centre and an interdisciplinary hub, which treats Southeast Asia not in isolation, but brings the region in conversation with the wider world. Such activities are further organised around three key intersecting research themes of urbanisation, connectivity and governance, reflecting the strengths and research interests of LSE experts on Southeast Asia.

Since the commencement of my Directorship in August 2018, SEAC has developed three operational strategies in order to address the above goals. These strategies entail: (i) capacity building; (ii) developing SEAC as an open platform for critical debates; (iii) agenda setting informed by research. They are outlined in more depth in the 'Operational Strategies' summary on the following page, in addition to a useful timeline diagram illustrating the Centre's activities in the 2018/19 Academic Year so far.

The academic year of 2018/2019 has marked the launch of a new chapter for SEAC; we are aiming to operate as a research centre, an interdisciplinary hub, and an open platform for critically discussing region-related affairs. In line with LSE 2030, the School's new vision and strategies, SEAC will continue to work for the betterment of Southeast Asian society and its sustainable future, and to make strenuous efforts to promote excellence in research and public engagement built from equity, diversity and inclusion.

Prof. Hyun Bang Shin

Director, LSE Saw Swee Hock Southeast Asia Centre



OPERATIONAL STRATEGIES

Capacity building

SEAC has strived to work on its capacity building by nurturing and supporting continuing work on the region by staff and students at LSE and beyond. While revitalising the extant scheme of the SEAC Research Fund, additionally the Centre has launched Seminar Series and Network grants for academic staff and early career researchers in order to facilitate their organisation of research seminars and networks (e.g., interdisciplinary and cross-institutional reading groups).

SEAC has established termly meetings between the Centre Director and the presidents of regional Students' Union societies to consolidate partnerships with LSE student bodies. SEAC has also been enthusiastically seeking ways to support students, including the launch of the new LSE Southeast Asia Dissertation Fieldwork Grant scheme in the Summer of 2019. The Centre is also actively considering hosting externally funded post-doctoral visitors to foster the development of early career researchers.

Another new initiative for SEAC is the expansion of its network on a global scale and investment in the next generation of Southeast Asia researchers. The Centre has recently established the LSE-Southeast Asia Early Career Researcher Network, for which we have seen significant enthusiasm. Since its inception in February 2019, the Network has grown to 70 members representing over 40 institutions as of July 2019, more than half of which are outside the UK, and research experience on nine Southeast Asia countries.

Furthermore, a Stipendiary Visiting Fellowship scheme was launched in March 2019 to attract Southeast Asia-based scholars to LSE for up to three months to conduct their research at SEAC. We aim to expand the scope in terms of visiting period and the number of beneficiaries if resources permit. SEAC is also preparing an application for a network grant from the AHRC (UK) to organise a research network that examines 'urban history' in Southeast Asia and beyond.

Open platform for critical debate

The second operational strategy is to position SEAC as an open platform for critical debates. A series of Centre-organised research seminars (e.g., Southeast Asia Discussion Series), academic workshops, and public lectures have addressed the Centre's key intersecting research themes of urbanisation, connectivity and governance. These are aimed at maintaining and enhancing SEAC's reputation as a key hub for critical and constructive dialogues on Southeast Asia in London.

SEAC has also continued the 'cove sessions' that have been institutionalised in previous years to act as a platform to facilitate candid discussions (under Chatham House rules). These are particularly helpful when discussions involve potentially sensitive affairs that the region faces, e.g., national elections, border disputes and transnational relations. SEAC has also launched masterclasses that involve dialogues between senior visiting scholars and early career researchers as well as undergraduate and postgraduate students.

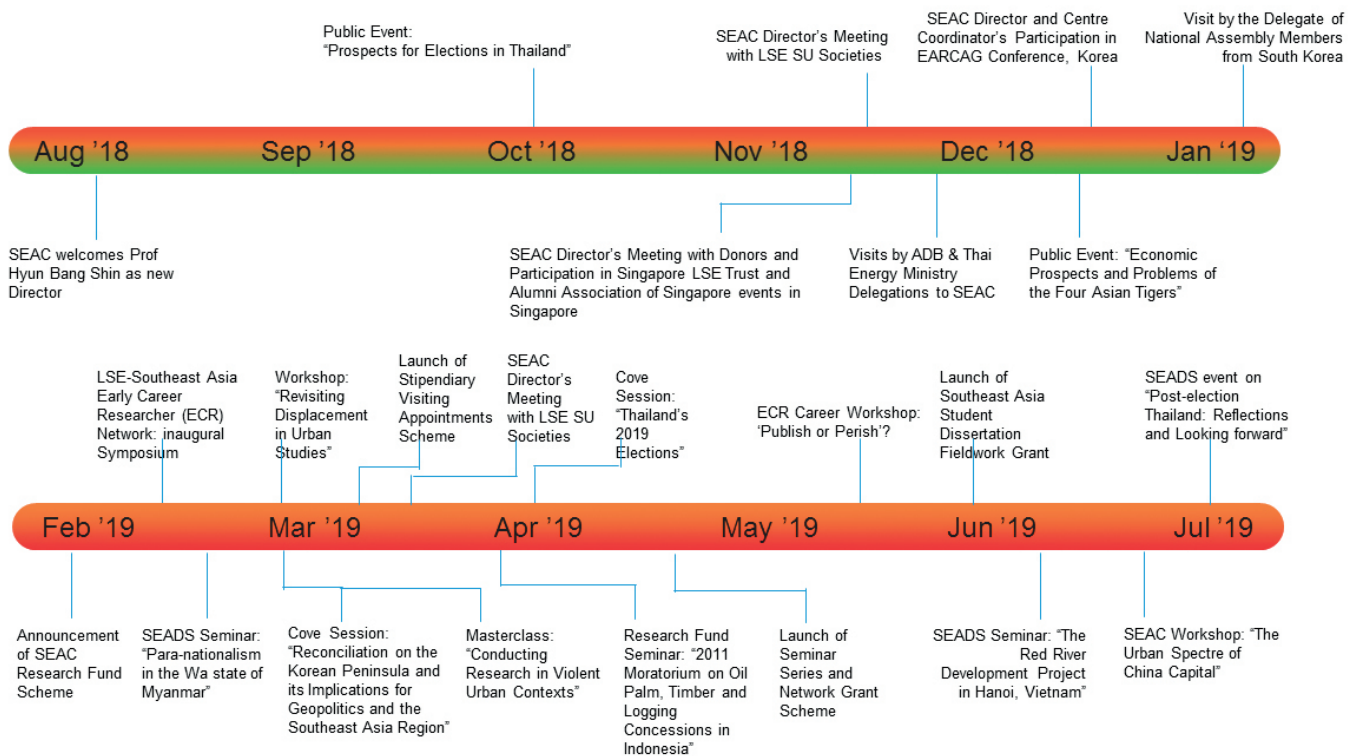
SEAC is in preparation for major conference events, including collaboration with the Association of Southeast Asian Studies in the UK (ASEASUK) to host the ASEASUK biennial conference in 2020 at LSE. SEAC's flagship conference, the Southeast Asia Forum, is to continue, building upon the success of past events, and in 2019 it is scheduled to take place in the autumn teaching term to facilitate the involvement of student bodies as well as academic staff.

Agenda setting

The third operational strategy focuses on agenda setting and building up SEAC's research profiles. This involves SEAC's bid for externally funded research projects, developing and expanding research output channels, and supporting cutting edge research carried out by LSE staff. In the spring of 2019 the Centre Director, Prof. Hyun Bang Shin, was awarded a research grant from the British Academy to conduct an international comparative research project entitled "The Urban Spectre of Global China: Mechanisms, Consequences, and Alternatives for Urban Futures". This project involves collaboration with researchers based in mainland China (Beijing) and Malaysia (Kuala Lumpur). In May 2019, the SEAC Centre Director, Prof. Hyun Bang Shin, has also been awarded an internal School research grant to kick-start a new project that helps comparatively examine smart urbanism and new city construction in the Middle East and Southeast Asia.

Furthermore, SEAC has begun to develop a working paper series from the 2019/20 academic year onwards in order to ensure that its programmes involving researchers produce substantive outputs in the form of research papers. One novel feature of this initiative, subject to the availability of funding, is to translate high-quality SEAC Working Papers into Thai, Indonesian, Filipino (Tagalog), Vietnamese and Mandarin Chinese languages, to maximise the reach for receiving feedback, to allow authors to engage more actively with the audience in the region, and to contribute to changing the way knowledge is produced and shared. Other publication channels for wider public engagement include SEAC's extant Medium blog as well as the Centre-supported LSE blog on Field Research Methods (blogs.lse.ac.uk/fieldresearch).

SEAC Timeline of Activities



PEOPLE AT THE CENTRE



Director

Hyun Bang Shin is the Director of the Saw Swee Hock Southeast Asia Centre, and Professor of Geography and Urban Studies

in the Department of Geography and Environment at LSE. Professor Shin's research centres on the critical analysis of the political economy of urbanisation with particular attention to cities in Asian countries such as Vietnam, Singapore, South Korea and China. His research themes include the politics of displacement; gentrification; real estate speculation; the right to the city; mega-events as urban spectacles; circulation of urbanism and policy transfer.

Professor Shin has published widely in major international journals such as the *Annals of the American Association of Geographers*, *Antipode*, *Urban Studies*, *Geoforum*, and *CITY*, and has contributed to numerous books on the above themes. His most recent books include: *Neoliberal Urbanism, Contested Cities and Housing in Asia* (Palgrave Macmillan, 2019); *Anti Gentrification: What is to be Done* (Dongnyok, 2017); *Planetary Gentrification* (Polity Press, 2016); *Global Gentrifications: Uneven Development and Displacement* (Policy Press, 2015). Another forthcoming book includes *The Political Economy of Mega Projects in Asia* (Routledge) and *Making China Urban* (Routledge).

Professor Shin is a trustee of the Urban Studies Foundation, sits on the international advisory board of the journal *Antipode* and serves on the editorial boards of the journals *CITY*; *Urban Geography*; *City, Culture and Society*; *Space and Environment*; *China City Planning Review*; *Radical Housing Journal*; *International Journal of Urban and Regional Research* (from January 2020). He is also a co-organiser of the Urban Salon, an interdisciplinary London forum for architecture, cities and international urbanism, and edits the LSE Field Research Methods Lab blog.



Centre Manager

Lee Mager is the Saw Swee Hock Southeast Asia Centre Manager, taking responsibility for its day-to-day operation, including

administration of financial, human and physical resources, implementation of events and programmes, and managing communications and outreach strategies including publications, in addition to supporting the Centre Director with strategic planning, stakeholder engagement and reporting.

Lee is a specialist in higher education management with particular expertise in the university student experience, and is an APMG certified Change Management Practitioner. He also holds professional certifications in PRINCE2 Project Management and MSP Programme Management. He was the winner of LSE's 'Unsung Hero' prize in 2015 at the School's inaugural Values in Practice Awards, during his appointment as Deputy Department Manager and Undergraduate Manager in the Department of Geography and Environment at LSE.

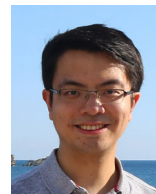
Lee holds a PhD and MSc in Sociology from LSE; for the latter he won the Hobhouse Memorial Prize for Best Overall Performance in the Department of Sociology, as well as the Hobhouse Dissertation Prize.



Interim Centre Coordinator

Do Young Oh worked as Centre Coordinator at LSE Saw Swee Hock Southeast Asia Centre between August 2018

and January 2019, focused on day-to-day operation and supporting the Centre Director to facilitate the Centre's transition to the new directorship. He holds a PhD in Regional and Urban Planning from the Department of Geography and Environment at LSE. His research interests focus on comparative urbanism and post colonialism. His doctoral thesis investigated the evolving university-city relationship through a comparative analysis of East Asian urbanisation processes, and during his time at SEAC he investigated the university-city relationship in Singapore and Vietnam in a post-colonial context.



Postdoctoral Research Assistant

Yi Jin is Postdoctoral Research Assistant for SEAC's British Academy-funded

research project entitled, "The Urban Spectre of Global China: Mechanisms, Consequences, and Alternatives for Urban Futures". Yi recently finished his PhD in the Department of Geography and Environment at LSE. His research focuses on the political, economic and social dimensions of urban change, particularly in China. Yi is also working on the changing logic of urban governance underlying Chinese urban policies and the issue of urban materiality.

LSE-SOUTHEAST ASIA EARLY CAREER RESEARCHER (ECR) NETWORK

The Centre took the lead early in 2019 to create a global network of early career scholars working on the Southeast Asia region and provide support to help nurture their professional development. Since its inception, the LSE-Southeast Asia ECR Network has welcomed more than 70 members representing over 40 institutions, more than half of which are based outside the UK, and research experience on nine Southeast Asian countries. We hope to further expand the Network's membership, with regular events and opportunities for interactions and collaborations. SEAC aims to provide material, logistical, academic and communication support to set its place firmly on the map as the central hub for advancing research on, and raising the profile of, the Southeast Asia region.

In February 2019, SEAC created an interactive map via Maphub (below) which shows where ECR Network members are currently based. This is to become a key resource for scholars worldwide to be able

to search for researchers by country focus, with individual photos, research interests and online profile links within each SEAC flag on the map.

The Centre has run 2 ECR Network events in 2018/19 with many more planned for next year.





Inaugural LSE-Southeast Asia ECR Network event

13 February 2019

Speakers: Professor Sylvia Chant (Geography and Environment, LSE); Professor Tim Forsyth (International Development, LSE); Felicia Liu (PhD student, KCL/NUS); Dr Do Young Oh (PhD graduate, LSE); Rachel Bok (PhD student, UBC); Dr Jordana Ramalho (PhD student, LSE); Dr Mara Nogueira (Teaching Fellow, LSE); Khristine Alvarez (PhD student, UCL); Robert Cole (PhD student, NUS); Juan Rivas-Moreno (PhD student, LSE); Seb Rumsby (PhD student, Warwick); Dr Sokphea Young (Research Associate, UCL)

Chair: Prof. Hyun Bang Shin (LSE SEAC Director)

ECR Network Publishing Workshop

22 May 2019

Speakers: Dr Lee Mager (SEAC Centre Manager, LSE); Ms Lucy Lambe (Scholarly Communications Officer, LSE), Prof. Hyun Bang Shin (SEAC Director and Professor of Geography and Urban Studies, Department of Geography and Environment, LSE); Dr Sokphea Young (Research Associate, Department of Anthropology, LSE); Dr Lisa Tilley (Lecturer, Department of Politics, Birkbeck University); Dr Gunjan Sondhi (Lecturer, Department of Geography, Open University)

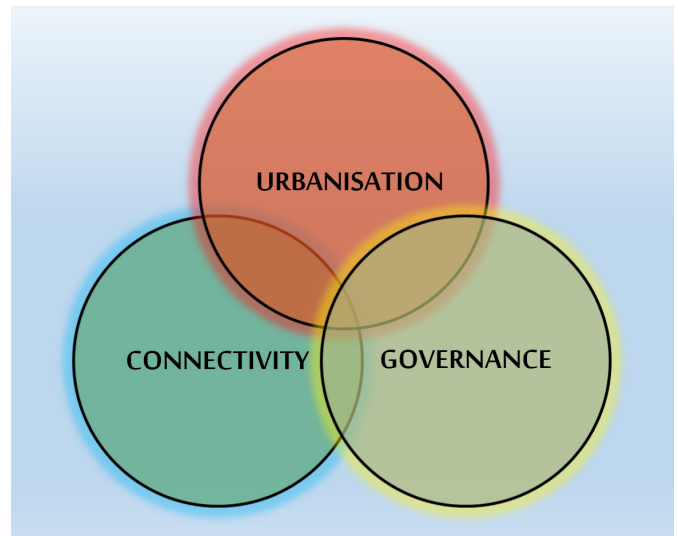
Chair: Prof. Hyun Bang Shin (LSE SEAC Director)



RESEARCH ACTIVITIES

SEAC Research Focus

SEAC generates and supports interdisciplinary research on Southeast Asia by bringing together researchers and providing a platform for critical debates for analysis of the region in global contexts. The Centre encourages wider perspectives, paying attention not only to intra-regional or local dimensions but also to the ways in which Southeast Asia can enter into conversation with its neighbouring regions and the world. SEAC's focus is on three key, intersecting themes: urbanisation, connectivity and governance:



Urbanisation: to enquire into urbanisation beyond demographic transformations and examine contemporary and historic experiences that encompass the politics and the economics of urbanisation/city-making. Topics of interest for example may include, but are not limited to, the promotion of urbanisation as a state project; the politics of land use; displacement and dispossession; real estate; gentrification; critical discourses on the use of Asian cities as reference points for (re-)developing cities in the Global South.



Connectivity: to examine trans-regional or international connectivity in terms of people, built environments and nature. The theme may possibly concern, for example, policy networks; infrastructural connections; special economic zones as nodal points for cross-border investments and trades; transnational real estate drives; trade relations; historic and contemporary migration; kinship or religious links; interconnected ecosystems such as the Mekong River basin.



Governance: to explore the governance that involves transnational, national and sub-national actors who play their roles directly and/or indirectly in the process of making decisions that may have socio-economic impacts upon people and places. Examples of topics include: state-business relations, transnational or regional co-operation, grassroots politics of democratisation, gender politics, ethnic and cross-border relations, communal conflicts.

SEAC Research Projects



The Urban Spectre of Global China: Mechanisms, Consequences, and Alternatives for Urban Futures

In 2019, SEAC was awarded a British Academy grant for its 'Tackling the UK's International Challenges' programme. The 18-month project examines four large-scale property development projects of Chinese capital, to question the ways in which the urban has been reconfigured by China's global expansion.

This project draws on methods of comparative urbanism and multi-sited ethnography, aiming to uncover the differentiated models of urban production in the Global China era and to generate new insights for inclusive approaches to urban space, nature and modernity.

This international collaborative project critically examines the dynamics of urban political economy and contemporary urban living in a rapidly shifting geopolitical setting. By focusing on the local, national and global mechanisms and impacts of Chinese urban spectres, the project aims to deepen our understandings of interrelated urban future issues.

Research will be conducted in London, Iskandar Malaysia, Beijing and Foshan.

Principal Investigator:

Prof. Hyun Bang Shin, Director of the Saw Swee Hock Southeast Asia Centre, and Professor of Geography and Urban Studies in the Department of Geography and Environment, LSE

Co-Investigators:

Dr Sin Yee Koh, Senior Lecturer in Global Studies, School of Arts and Social Sciences, Monash University Malaysia

Dr Yimin Zhao, Assistant Professor in Urban Planning and Management, School of Public Administration and Policy, Renmin University of China

Project Advisors:

Prof. Ching Kwan Lee, Professor of Sociology at University of California Los Angeles

Dr Pow Choon-Piew, Associate Professor in the Department of Geography, National University of Singapore

Research Assistant (London-based):

Dr Yi Jin, Postdoctoral Research Assistant, Saw Swee Hock Southeast Asia Centre, LSE



Asian Capital and the Rise of Smart Urbanism

SEAC is also to initiate a 14-month research project, beginning September 2019, which aims to analyse and compare how Asian cities have risen to become reference points for the development of cities in the Global South. The project is to examine the experience of building new cities branded as smart cities in Kuwait, where Asian companies are involved in developing new smart cities, and the Philippines. The Kuwait study is to be funded by the Kuwait programme Research Grant from the LSE Middle East Centre.

Principal Investigator: Prof. Hyun Bang Shin, Director of the Saw Swee Hock Southeast Asia Centre, and Professor of Geography and Urban Studies in the Department of Geography and Environment, LSE

Project Researcher: Dr Do Young Oh, Saw Swee Hock Southeast Asia Centre, LSE | Middle East Centre, LSE

Academic Workshops

SEAC's academic workshops bring together local and international academics, researchers and practitioners on an invitation only basis to work together on high-quality, innovative research on particular themes relevant to Southeast Asia.

Revisiting Displacement in Urban Studies

28 February 2019

SEAC, in collaboration with the Urban Salon (a London-based seminar series), hosted a roundtable discussion on displacement, incorporating Southeast Asia and beyond. Displacement has been at the core of a number of critical studies that address problems associated with gentrification, infrastructure development, armed conflicts, and so on, which result in socio-spatial restructuring of existing inhabitants. The workshop brought together six speakers who offered reflections on the meaning of 'displacement' in their ongoing and past research, helping us to critically revisit what displacement means for urban studies in general.

Speakers:

- Prof. Katherine Brickell (Professor of Human Geography, Royal Holloway, University of London): "Cambodia's Vertical Ascent: Viewpoints on Urban Displacement from Phnom Penh"
- Dr Lisa Tilley (Lecturer in Politics, Birkbeck, University of London): "Displacement and the Rationalisation of Urban Life in Jakarta"
- Dr Jordana Ramalho (PhD Candidate, LSE Geography): "Displacement and disaster risk governance in Metro Cebu, the Philippines"
- Prof. Qin Shao (Professor of History, The College of New Jersey): "Forced Displacement: An Instrument of Control from Mao to Post-Mao"
- Prof. Oren Yiftachel (Professor of Political and Legal Geography, Ben-Gurion University of the Negev, Israel): "Displaceability: a new foundation of urban citizenship?"
- Prof. Loretta Lees (Professor of Human Geography, University of Leicester): "Moving beyond Marcuse: gentrification, displacement and the violence of un-homing"

Chair: Prof. Hyun Bang Shin (SEAC Director, LSE)

SEAC Workshop: The Urban Spectre of Global China

19 June 2019

SEAC hosted a workshop to mark the commencement of the Centre's new research project funded by the British Academy entitled, "The Urban Spectre of Global China: Mechanisms, Consequences, and Alternatives for Urban Futures". The workshop involved a group presentation on the project scope by the project investigators, followed by panel contributions from invited experts.

Speakers:

- Prof. Hyun Bang Shin (SEAC Director, LSE)
- Dr Sin Yee Koh (Senior Lecturer in Global Studies, School of Arts and Social Sciences, Monash University Malaysia)
- Dr Yimin Zhao (Assistant Professor in Urban Planning and Management, School of Public Administration and Policy, Renmin University of China)

Panellists:

- Dr Charlotte Goodburn (Lecturer in Chinese Politics and Development and Deputy Director of the Lau China Institute, King's College London)
- Prof. Ian Gordon (Emeritus Professor of Human Geography, Department of Geography and Environment, LSE)
- Prof. Scott Lash (Visiting Professor at School of Creative Media, City University of Hong Kong and Senior Research Associate at Oxford Centre on Migration Policy and Society)
- Prof. Jennifer Robinson (Chair of Human Geography, Urban Laboratory, UCL)



SEAC Research Fund

The aim of the SEAC Research Fund is to fill a gap in the support available to, and to promote high-quality research by, LSE academics in the region. At the end of January 2019, SEAC announced its invitation for the third round of Research Fund applications, which closed on 30th April 2019. The maximum amount permitted for each application was £7,500. From the third round, applicants were required to indicate clearly how their research aligned with SEAC's core research themes, and commit to SEAC's dissemination strategies including contribution to SEAC's forthcoming Working Paper Series.

For the 2018/19 academic year, the following project was approved:

Strengthening Landscape Governance: comparing institutional designs under rapid change in Papua, Indonesia

The proposed research will contribute to debates about integrating development objectives within global climate change policies in rural, forested landscapes, using sites from the important location of Papua in Indonesia. The research will draw upon debates in the interface of politics and anthropology within institutional theory. The purpose of the research is to investigate the driving forces for the formation of multi-actor, multi-level institutions for forest protection under two distinct zones of rapid socio-economic change and political imbalances. By so doing, the research will provide useful information about how to implement global climate change policies in ways that are more socially inclusive and effective. Moreover, it will do so in a zone where there is international concern about rapid environmental destruction and social exclusion.



Principal Investigators: Prof. Tim Forsyth (Professor in Environment and Development, LSE) and Prof. Gill Shepherd (Visiting Professor in Anthropology, LSE)

Project Period: Jan 2020 – Jul 2020

For the 2017/18 academic year, the following project was approved and implemented:

The Palm Oil Concession Moratorium and its Spatial Impact on Deforestation

This project analysed the effectiveness of the 2011 Moratorium on Palm Oil, Timber and Logging concessions issued in 2010. The Moratorium sought to halt the conversion of primary forest and peatlands into palm oil, timber and logging estates, thus slowing down the intensive deforestation processes which characterised the Indonesian land-use sector in the previous decades. Using a spatially defined dataset combined with econometric methods for impact analysis, the project attempted to assess the relative significance of different drivers of deforestation and the Moratorium's effectiveness in slowing down deforestation.

Principal Investigators: Prof. Ben Groom (Associate Professor of Environment and Development Economics, LSE) and Dr Charles Palmer (Associate Professor of Environment and Development, LSE)

Project Period: Feb 2018 – Jul 2019

In addition, SEAC has supported the following project due to be completed in the 2018/19 academic year:

UK-Southeast Asia relations

This project analyses UK-Southeast Asia relations, and aims to explain recent policy change, and to offer a critical appraisal, whilst also providing policy advice in the context of Brexit. A major aspect of the initial research has focused on the question of the UK's future partnership arrangement with the Association of Southeast Asian Nations (ASEAN) and possible options for future new trading arrangements.

Principal Investigator: Dr Jürgen Haacke (Associate Professor in International Relations, LSE)

"My fieldwork to Mindanao, Philippines was made possible through SEAC's Student Dissertation Grant. This research is groundbreaking in its scope as this is the first academic research conducted with the Bangsamoro Islamic Women's Auxiliary Brigade (BIWAB). Since BIWAB's inception in the 1970s, the Moro Islamic Liberation Front (MILF) concealed BIWAB's existence, and access to them was restricted. Through SEAC's grant I was able to meet the founders of BIWAB in Cotabato City in Southern Mindanao, and conducted an interview with them, to learn about their life histories. Through the face-to-face interview, I was able to document the history of BIWAB and gathered valuable data that shed light to their experiences as child soldiers, their contribution to the liberation movement and their current roles in the post-conflict context."

Rio Grace Otar, SEAC Student Dissertation Fieldwork Grant Awardee 2018/19

New funded schemes launched in 2018/19

As part of SEAC's new operational strategies to strengthen its research and agenda setting capacity, to develop SEAC as an open platform for critical debates, and to nurture LSE students as future leaders, SEAC has launched three new schemes as described below.

SEAC Stipendiary Visiting Researcher Scheme

SEAC has introduced a new, stipendiary, visiting researcher scheme for the 2019/2020 academic year. This is

in addition to our existing Standard Visiting Appointment scheme, for which applicants have always been expected to secure their own funding. The Stipendiary Visiting Appointment scheme is directly seeking to attract scholars currently employed at an institution within the Southeast Asia region, who have been significantly underrepresented among SEAC's past visiting scholars.

Seminar Series and Networking Grant

SEAC has introduced a new scheme for the 2019/20 academic year, open to LSE academic staff and LSE-based

early career researchers (including PhD students). The fund is to contribute towards seminar series, reading groups or networking events focusing on social science issues relevant to Southeast Asia, aligning with one or more of SEAC's core research themes of urbanisation, connectivity and governance. Successful applicants will assume responsibility and accountability for organising events and will be representing SEAC as organisers and Chairs during events, working closely with SEAC for their preparation to coordinate activities and their timing.

Student Dissertation Fieldwork Grant

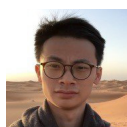
SEAC introduced a student fieldwork grant scheme, for undergraduate and taught master's students at LSE undertaking their assessed dissertation fieldwork in the Southeast Asia region. Currently the grant provides a maximum of £500 per applicant towards fieldwork research expenses, though the Centre hopes to expand the scheme in future years depending on available funding. SEAC is pleased to announce that five students have been selected in the first round that was concluded in June 2019:



Tiffany Bennett
MSc Development Management

Fieldwork location:
Cambodia

Topic: *Belonging on the Margins: Exploring National Identity Among Cham Muslims in Rangsei Village, Cambodia*



Lazarus Chok
BA Geography

Fieldwork location:
Singapore

Topic: *Terminal estates:*

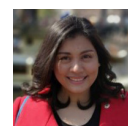
An ethnographic study of planned obsolescence in public housing estates in Singapore



Ming Kit Lim
MSc Public Administration and Government

Fieldwork location: Singapore

Topic: *Engendering Participatory Governance in Paternalistic States: A Case Study of 'Our Singapore Conversation'*



Rio Grace Otar
MSc Gender, Development and Globalization

Fieldwork location:
Philippines

Topic: *Life Histories of Muslim Women Leaders of the Bangsamoro Islamic Women's Auxiliary Brigade in the Philippines*



Katie Parkinson
MSc International Development and Humanitarian Emergencies

Fieldwork location: Thailand

Topic: *Constructing 'Home' in Exile: Perspectives of Shan Refugees in Thailand*



PUBLIC ENGAGEMENT

Public Events in the academic year of 2018/2019

SEAC serves as a globally recognised hub for public debate and engagement on Southeast Asia in London. In 2018/19, the Centre established several new event formats, such as SEADS (Southeast Asia Discussion Series) seminars, Early Career Researcher events and Research Masterclasses, as additions to the existing Public Lectures, Workshops, Cove Sessions and of course the Southeast Asia Forum.

Prospects for Elections in Thailand: the Future Forward party under the spotlight

Co-hosted with the Department of International Development, LSE

8 October 2018

Speakers: Thanathorn Juangroongruangkit (Leader, Future Forward Party); Prof. Duncan McCargo (Professor of Political Science, University of Leeds); Petra Desatova (PhD student, University of Leeds); Piyabutr Saengkanokkul (Secretary-general of Future Forward Party); Pannika Wanich (Spokesperson, Future Forward Party)

Chair: Professor Tim Forsyth (Professor of International Development, LSE)

Economic Prospects and Problems of the Four Asian Tigers

Co-hosted with LSE Student Union: Singapore Society, Taiwanese Society, Korea Future Forum, Hong Kong Public Affairs and Social Service Society

4 December 2018

Speakers: Prof. Christopher Hughes (Professor of International Relations, LSE); Christine Chow (Director, Hermes Investment Management); Dr Christopher Dent (Senior Lecturer in Economics and Business, Edge Hill University); Dr Ulrich Volz (Reader in Economics, SOAS)

LSE-Southeast Asia Early Career Researcher Network inaugural event: "What does Southeast Asia mean for my research?"

13 February 2019

Speakers: Prof. Sylvia Chant (Professor of Development Geography, LSE); Prof. Tim Forsyth (Professor of International Development, LSE); Felicia Liu (PhD student, KCL/NU'S); Dr Do Young Oh (PhD graduate, LSE); Rachel Bok (PhD student, University of British Columbia and NUS alumna); Dr Jordana Ramalho (PhD student, LSE); Dr Mara Nogueira (Teaching Fellow, LSE); Khristine Alvarez (PhD student, UCL); Robert Cole (PhD student, NUS); Juan Rivas-Moreno (PhD student, LSE); Seb Rumsby (PhD student, Warwick); Dr Sokphea Young (Research Associate, UCL); Kentaro Fujikawa (PhD student, LSE); Pon Souvannaseng (Research Associate, Manchester); Dorothy Ferary (PhD student, UCL); Greta Siebel (PhD student, LSE)

Chair: Prof. Hyun Bang Shin (LSE SEAC Director)



Southeast Asia Discussion Series: Para-Nationalism: Sovereignty and Authenticity in the Wa State of Myanmar

15 February 2019

Speaker: Dr Hans Steinmüller (Assistant Professor of Anthropology, LSE)

Discussant: Dr Patrick Meehan (Senior Teaching Fellow in Development Studies, SOAS)

Chair: Prof. Hyun Bang Shin (LSE SEAC Director)

Cove Session: Reconciliation on the Korean Peninsula and its implications for geopolitics in the Southeast Asia region

28 February 2019

Speaker: Prof. Vladimir Tikhonov (Professor of Korean Studies, University of Oslo)

Chair: Prof. Hyun Bang Shin (LSE SEAC Director)



Masterclass: Conducting research in violent urban contexts

1 March 2019

Speaker: Prof. Qin Shao (Professor of History, College of New Jersey)

Chair: Prof. Hyun Bang Shin (LSE SEAC Director)

SEAC Research Fund Seminar: The Palm Oil Concession Moratorium and its Spatial Impact on Deforestation

19 March 2019

Speakers: Prof. Ben Groom (Professor of Environment and Development Economics, LSE); Dr Charles Palmer (Associate Professor of Environment and Development, LSE), Mr Lorenzo Sileci, PhD candidate in Environmental Economics, LSE)

Chair: Prof. Hyun Bang Shin (LSE SEAC Director)

SEAC Cove Session: Thailand's 2019 Elections: Will the Political Crisis Continue?

25 March 2019

Speaker: Dr Pavin Chachavalpongpun (Associate Professor, Center for Southeast Asian Studies, University of Kyoto, Japan)

Chair: Prof. Tim Forsyth (Professor of Environment and Development, LSE)



Southeast Asia Discussion Series: Situating Planners' Everyday Life: Personal Memoir of International Planning Fieldwork for the Red River Development Project in Hanoi, Vietnam

6 June 2019

Speaker: Ms Sujee Jung (PhD Candidate, Edward J. Bloustein School of Planning and Public Policy, Rutgers University)

Discussant: Dr Catalina Ortiz (Lecturer in Building and Urban Design in Development, Bartlett Development Planning Unit, UCL)

Chair: Prof. Hyun Bang Shin (LSE SEAC Director)

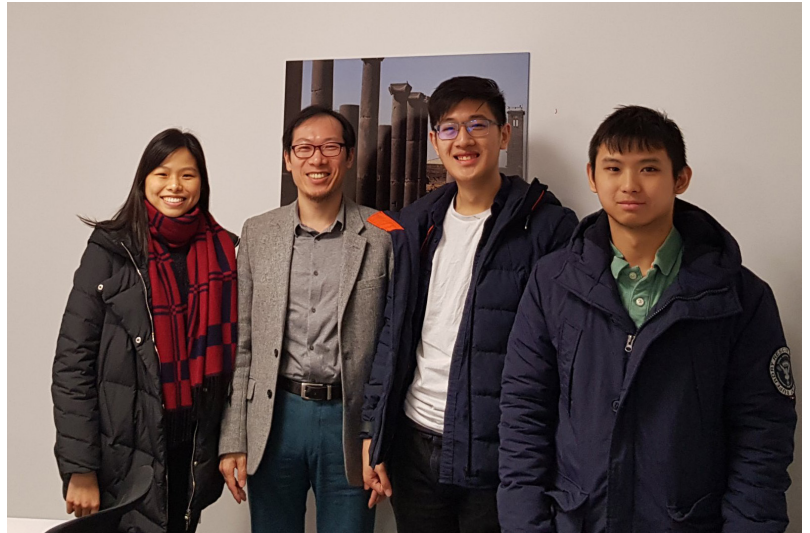
Southeast Asia Discussion Series: Post-Election Thailand: Reflections and Looking Forward

11 July 2019

Speakers: Dr Petra Desatova (School of Politics and International Studies, University of Leeds); Mr Thanathorn Juangroongruangkit (Leader, Future Forward Party); Prof. Duncan McCargo (Director of the Nordic Institute of Asian Studies and Professor of Political Science, University of Copenhagen); Ms Pannika Wanich (Spokesperson, Future Forward Party)

Chair: Prof. Tim Forsyth (Professor of Environment and Development, LSE)





STUDENT ENGAGEMENT AND COLLABORATION

In 2018/19, SEAC has pro-actively increased engagement, involvement and collaboration with LSE Students' Union Societies related to Southeast Asia, which are:

- ASEAN Society
- Malaysia Club
- SingSoc (Singapore Society)
- Indonesian Society
- Thai Society
- Vietnamese Society

In addition to termly meetings to discuss ideas for collaboration and enhancing the profile of the Southeast Asian student community, the Centre has promoted active, continual dialogue throughout the year, and has set mutually beneficial expectations of information sharing, logistical and promotional support, and attendance

at each other's events. SEAC has also recently launched the Student Dissertation Fieldwork Grant scheme in 2018/19, to fund assessed dissertation fieldwork in the Southeast Asia region for LSE undergraduate and taught postgraduate students. This year's winners can be seen on page 11.

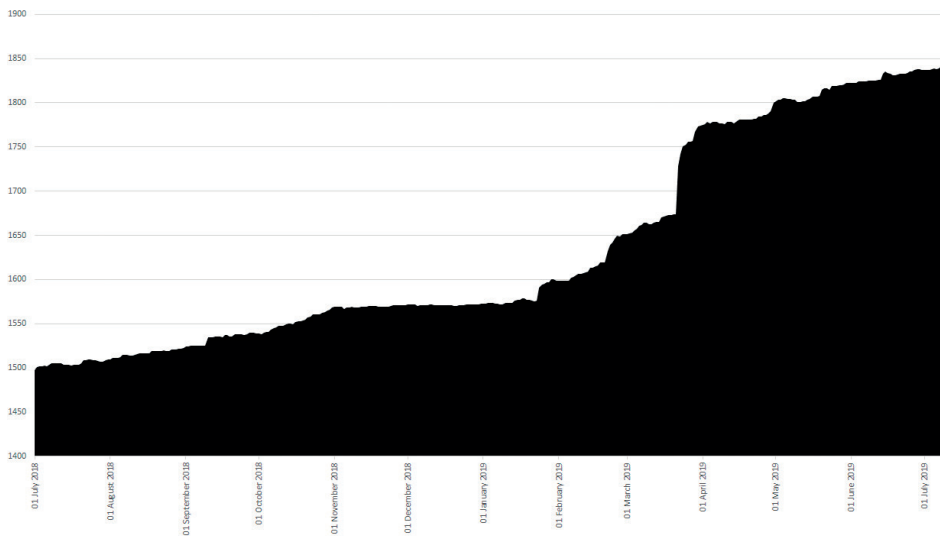
Notable recent student-led events include a student-organised talk by Professor John Sidel, a SEAC associate, on populism in Southeast Asia, a discussion on the political parallels between ASEAN states and India with speaker Karim Raslan, and a talk by Professor Lutfey Siddiqi on the ASEAN economic outlook. In addition SEAC has contributed towards the annual Economic and Leadership Forum in Malaysia, led by LSESU Malaysia Club members.

SEAC also continues to involve PhD students in private, research related events and activities. A SEAC Masterclass on conducting research in violent urban settings was organised with Professor Qin Shao from the College of New Jersey on 1st March, and the Cove Session with Prof. Vladimir Tikhonov on the geopolitical implications for Southeast Asia of Korean reconciliation on 28th February was mostly attended by students from LSE and other London universities. Moreover, LSE PhD students working on relevant topics were invited to attend and participate in many events including academic workshops. All these initiatives aim to nurture a new generation of Southeast Asia scholars and to support their research and professional development.

ONLINE ENGAGEMENT

SEAC has continued to invest in and develop its use of online communications platforms to engage with its various local and international audiences and grow its network. In February 2019, the Centre supported the professional video production of the LSE Festival Event entitled, “New Reconciliations: the two Koreas”. The Centre is in the process of redesigning its LSE website to more effectively showcase its activities, outputs and outreach, provide a friendlier user experience and a clearer, cleaner aesthetic.

SEAC Facebook 'Likes' 2018/19



The SEAC social media pages are particularly active and have seen steady audience growth since June 2018:

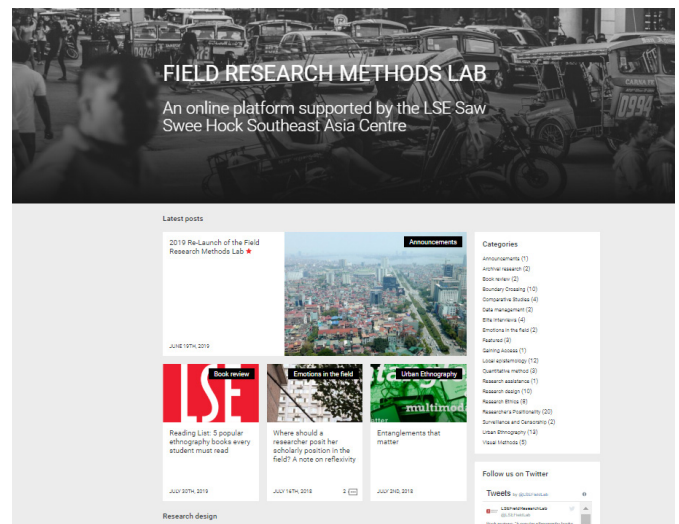
The demographics of SEAC's Twitter audience is especially enlightening, with five Southeast Asian nations represented in the list of top ten follower countries:



SEAC hosts a dedicated blog via Medium, which hosts a variety of informal articles and commentaries by SEAC colleagues, visitors and invited speakers.

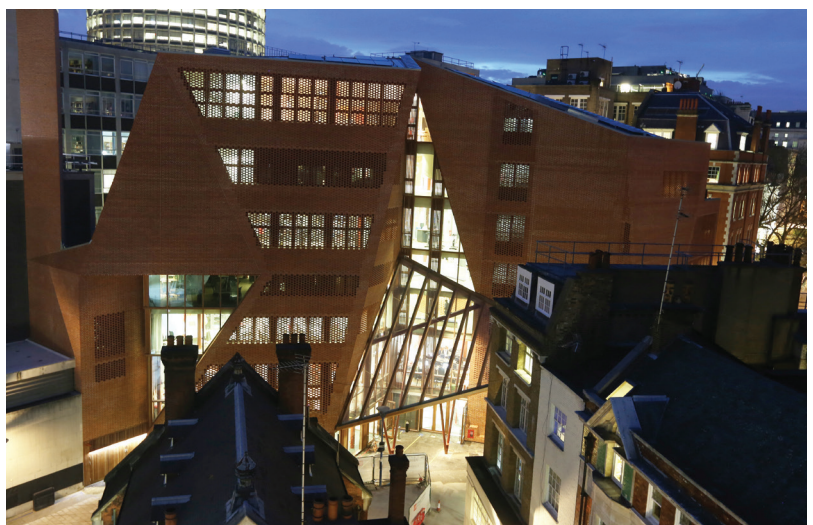
In addition, in 2019 the Centre has helped to re-design and re-launch the LSE Field Research Method Lab, to expand the Centre's blog postings to attend to the practical, methodological and reflexive issues associated with research which will complement the empirical and theoretical focus of the Medium blog.

SEAC events and opportunities also regularly feature in newsletters released by LSE's internal communications team such as Staff News and Research Briefing. SEAC's own mailing list has risen to well over 500 subscribers in the last year, who receive monthly email newsletters that detail highlights from the previous month and flag forthcoming activities and opportunities. The SEAC team produces monthly communications analytics reports to better understand how the Centre's events, newsletters, social media posts, podcasts and blog posts are being received



LSE SOUTHEAST ASIA FORUM

In previous years, SEAF was held in May, which meant many students were unable to attend due to examinations being held at that time. The Centre decided to move the Forum to Autumn; the 2019 SEAF is scheduled to be held on 29th October 2019 in the LSE Shaw Library, focusing on the key research themes of SEAC and engaging with contemporary affairs in Southeast Asia.





NETWORK BUILDING

In 2018/19 the Centre has made significant steps in reaching out and engaging both with external scholars and officials, exploring opportunities for future collaborations with both SEAC and LSE. In addition to building a contacts database of social science faculties at higher education institutions in Southeast Asia, with which SEAC introduced itself, invited collaboration proposals and disseminated the new Stipendiary Visiting Appointment opportunity, SEAC has created a database of around 70 Southeast Asia-focused departments, centres and institutes outside of the UK.

External visitors to the Centre this academic year include:

- The incoming British High Commissioner to Singapore, Her Excellency Ms Kara Owen
- Executive Director of Thailand's Ministry of Energy, Dr Poonpat Leesombatpiboon
- Chair of the Association of Southeast Asian Studies UK, Dr Deirdre McKay
- Director of the Asian Development Bank, Mr David Kruger and Principal Director Ms Vicky Tan
- Scholars from Tianjin University School of Architecture: Prof. Tianjie Zhang, Prof. Peng Zeng and Prof. Long Zhang
- Executive Director of the Jakarta-based Rujak Center for Urban Studies, Ms Elisa Sutanudjaja
- Scholars from the Chinese Academy of Social Science (CASS): Prof. Liping Xu (Director of Center for South East Asian Studies), Prof. Feiteng Zhong (Head of Department of Major Powers Relations) and Dr Yongguang Huang (CASS Senior Fellow)
- Members of the South Korea's National Assembly Mr Jeong-Sik Cho, Mr Hee Hwang, Mr Byoung-won Kang, Ms Sumin Kim, Mr Joo-hyun Son and Mr Seyong Park
- Dean of the Faculty of Social and Political Science, Universitas Indonesia, Dr Arie Soesilo
- Samantha Hung, Deputy Representative, European Representative Office (ERO) at Asian Development Bank (ADB)
- Prof. Xiuli Xu (Department of Development Studies, China Agricultural University)
- Prof Tamaki Endo, Saitama University, Japan

FOUNDING GIFT

"I am delighted to support the establishment of this Centre to enable LSE to consolidate and strengthen its education and research on the Southeast Asia region among students, researchers and faculty members. A deeper understanding of the 10 countries with diverse political and economic systems, bonded together by ASEAN, will engender lasting benefits to the School's academic community and graduates viewed in terms of the increasingly inter-dependent world economy and a further rise of Asia in the years ahead."

Professor Saw Swee Hock

Professor Saw Swee Hock is an esteemed alumnus of LSE (PhD in Statistics, 1963) whose generous gift in July 2014 enabled the establishment of the LSE Saw Swee Hock Southeast Asia Centre.

Professor Saw has held academic positions at the University of Malaya in Kuala Lumpur, the University of Hong Kong, and the National University of Singapore (NUS). His publications centring on statistics, demography and economics include some 49 authored/edited books, 31 book chapters and over 110 articles, with part of his research work devoted to the Southeast Asian region.

Professor Saw is well known for his philanthropic endeavours, particularly in the area of tertiary education. He has generously supported universities in Singapore, Hong Kong, China and

England to advance higher education, research, and social mobility among less privileged students. A loyal donor to LSE, Professor Saw has supported scholarships through the Singapore LSE Trust, the LSE Asia Forums in Singapore and Beijing, the Library, the New Academic Building and the Saw Swee Hock Student Centre. His other alma mater, the NUS, has received the major share of his gifts, the largest towards the establishment of the NUS Saw Swee Hock School of Public Health.

Currently Professorial Fellow at ISEAS-Yusof Ishak Institute, Professor Saw

has received numerous accolades for his philanthropic and academic achievements. He was named Honorary Professor of Statistics at the University of Hong Kong, Honorary Professor at Xiamen University, and President's Honorary Professor of Statistics at NUS. He was made an Honorary Fellow at LSE and an Honorary University Fellow of the University of Hong Kong. Professor Saw was conferred the Outstanding Service Award by NUS, the Singapore President's Award for Philanthropy, and the Public Service Medal (PBM) by the Singapore Government in the 2013 National Day Awards, and was named as one of the '48 Heroes of Philanthropy' in the Asia-Pacific Region by Forbes Asia magazine in 2014. In 2015, he was conferred the Honorary Doctor of Letters by NUS and the Distinguished Alumni Leadership Award by LSE.

SEAC expresses its wholehearted gratitude for Professor Saw's visionary and unreserved support for the Centre.



Scholarship and Research Gifts

SEAC continues to benefit from Mr Arvind Khattar's generous contributions to further the Centre's research activities, following the 2015-2017 Khattar Scholarships for LSE students from countries in the Southeast Asia Region.

THE LONDON SCHOOL OF ECONOMICS AND POLITICAL SCIENCE

The London School of Economics and Political Science (LSE) is a world leading university, specialising in social sciences, with a global community of people and ideas that transform the world.

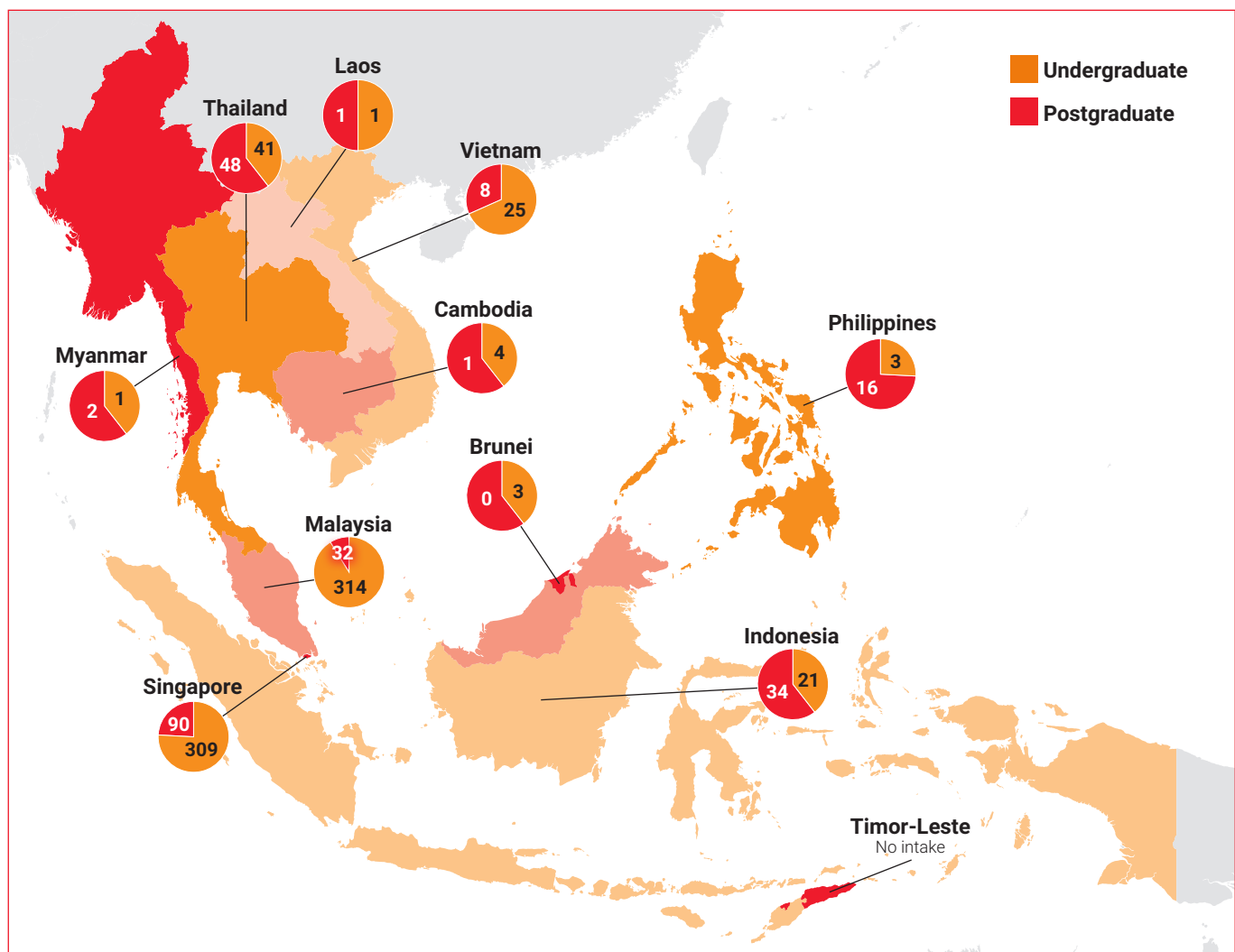
Founded in 1895, LSE's mission is to transform people and societies by understanding the causes of things. The School's research and teaching focuses on major global issues, including the economic threat of climate change, social and economic inequality across the world, economic growth and development, risk

in financial markets and structures, global health, and the future of our cities.

In addition to the cosmopolitan faculty and students who make it an international community rooted in London, LSE also has academic links to a number of high-quality overseas universities. The

School has particularly strong ties to the National University of Singapore, Columbia University, Peking University, University of Cape Town, Fudan University, UC Berkeley and Sciences Po – operating double degrees, student exchanges and summer school programmes.

LSE students from Southeast Asia in 2018/19







THE LONDON SCHOOL
OF ECONOMICS AND
POLITICAL SCIENCE ■

**LSE Saw Swee Hock
Southeast Asia Centre (SEAC)**

Houghton Street, London
WC2A 2AE

Facebook: facebook.com/LSESEAC/
Twitter: twitter.com/LSESEAC
Medium: medium.com/@lseseac

Contact

seac.admin@lse.ac.uk
Tel: +44 (0)20 7955 6952
lse.ac.uk/seac