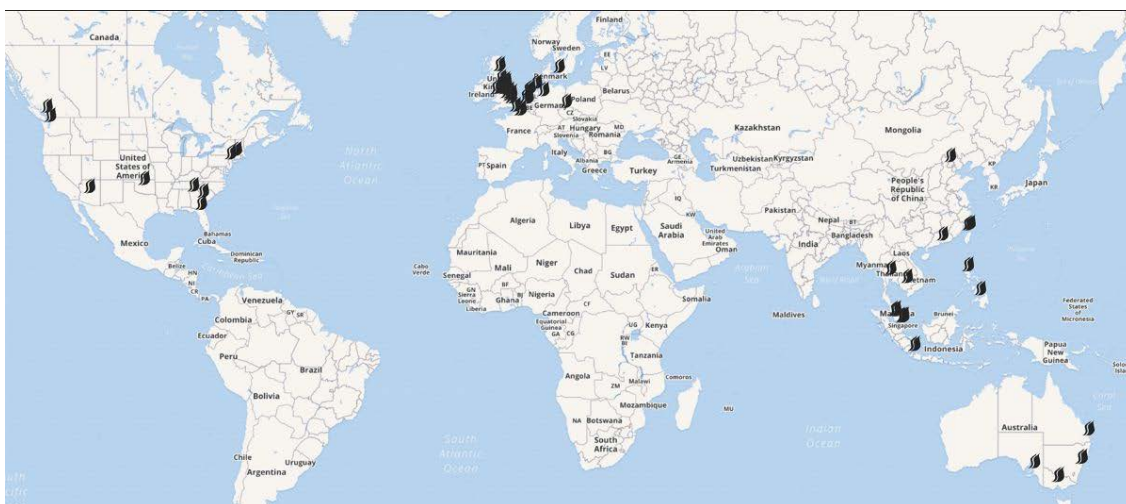




## LSE Saw Swee Hock Southeast Asia Centre



## **LSE-Southeast Asia Early Career Researcher Network News**

**Summer is here!**

As LSE's Summer Term comes to a close, we would like to thank all our ECR Network members for your contributions to our 2020-2021 academic year. It's been a busy year, with particular highlights:

Our Digital Summer School in collaboration with ASEAS (UK), specifically designed to support ECRs with skills and insights. [Videos of these sessions can be found here.](#)

SEAC Seminars featuring ECR Network members presenting their work, including [Solidarity and Polarisation: Centripetal and Centrifugal Forces in Southeast Asia](#) and [Foreign, 'Fresh' and 173cm: The Commodification of Domestic Workers in Singapore](#)

And the many blog posts ECR Network members have written for the [Southeast Asia Blog](#) and [Field Research Methods Lab Blog!](#)

---

## ECR Network News and Updates



### **Congratulations to Felicia Liu for her SEAC Research Fund award**

ECR Network member Felicia Liu (KCL, NUS) is the latest awardee of SEAC's Research Fund, who will undertake the project "Seasonality in the Anthropocene: Social constructions of Singapore's 'haze season'" with Dr Thomas Smith (LSE).



### **Call for Book Chapter Contributions**

Dr Khoo Ying Hooi (University of Malaya) would like to announce a call for book chapter contributors for her upcoming book: "Malaysia in a De-Globalising World: Conflicts and Uncertainties in the Age of Pandemic," co-edited with Kavitha Ganesan and Wan Sharina Ramlah.



### **SEAC congratulates Maria Pilar Lorenzo for her recent accolades**

ECR Network member Maria Pilar Lorenzo (Ghent University) received an award: [A. Noam Chomsky Global Connections Award \(Rising Star, Emerging Scholar category\)](#), and was recently shortlisted in [Women of the Future Awards - Southeast Asia \(Professions category\)](#).

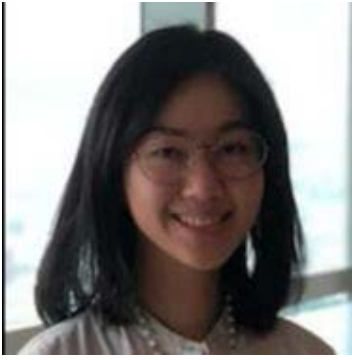


### **Join the Southeast Asia Working Group for Graduate Students**

ECR Network member Chase Caldwell Smith (UCLA) would like to invite you to join an informal group led by and for graduate students interested in the study of Southeast Asia:

"We are interdisciplinary, inclusive, and international, welcoming current, prospective, and recent graduate students from anywhere in the world who work on Southeast Asia from the perspective of the humanities and social sciences. Our mission is to provide an opportunity for graduate students interested in Southeast Asia to meet new friends and colleagues, workshop papers, and listen to and participate in talks, beyond the sphere of their home university. We are all digital, and meet once a month via Zoom."

You may join the [Facebook Group](#) or sign up to the [Email List](#).



### **SEAC congratulates Joanna Octavia for her latest award**

ECR Network member Joanna Octavia (University of Warwick), IER Doctoral Researcher, was awarded third place in the 2021 CERIC Doctoral Conference at the Leeds University Business School on Friday, 21 May 2021. Joanna presented the preliminary findings of her PhD fieldwork, which focuses on the internet organising and mobilising efforts of platform-based motorcycle taxi drivers in Jakarta, Indonesia.



### **Aliens in Their Own Land: COVID-19 and Economic Exclusion**

ECR Network member Namira Samir is published on the Southeast Asia Blog introducing *The Justice Institute (JUSTIN)* and reflecting on Covid-19 impacts and the informal economic sector in Indonesia. Read more [here](#).



### **Methodological Pivoting in COVID-19: Experimenting with Critical Corpus-based Analysis**

ECR Network member Al Lim is published on the Field Research Methods Lab Blog discussing the methodological pivoting from ethnography to critical corpus-based analysis for a master's dissertation on smart urban surveillance and reflects on continuing methodological questions relating data, objects, and models. Read more [here](#).



### **Conducting research in the midst of a military coup in Myanmar**

ECR Network member Morgane Dussud is published on the Field Research Methods Lab Blog discussing conducting research in constrained environments and how a rapidly unfolding political situation such as the current military coup in Myanmar, can be a struggle for field researchers. Read more [here](#).



### **Grappling with ethnoreligious politics and positionalities in Vietnam**

ECR Network member Seb Rumsby is published on the Field Research Methods Lab Blog discussing his research in Vietnam, and his observations on decolonising research and positionality. Read more [here](#).

---

## New Publications and Media



ECR Network member Dr Frega F. Wenas Inkiriwang's (Indonesian Defence University) article "["Multilateral Naval Exercise Komodo: Enhancing Indonesia's Multilateral Defence Diplomacy?"](#)" was published by the *Journal of Current Southeast Asian Affairs*. Dr Inkiriwang also authored "["Recalibrating Indonesia's Defense Diplomacy for the New Normal"](#)" under the the *National Bureau of Asian Research (NBR)*.

ECR Network member Dorothy Ferary (UCL) published an article entitled "["On Ki Hadjar Dewantara's Philosophy of Education."](#)" In this article, Ferary compares Dewantara's educational views with those of Rabindranath Tagore, Maria Montessori, and Friedrich Fröbel, Dewanatara schools with the colonial schools, as well as the current education system in Indonesia.



ECR Network member Naimah Talib (University of Melbourne) authored [a book review of "Water Politics: Governance, Justice, and the Rights to Water"](#) edited by Farhana Sultana and Alex Loftus in *Forest and Society*.

ECR Network member Dr Kankan Xie (Peking University) published an article entitled, "["Experiencing Southeast Asian Studies in China: A reverse culture shock."](#)"





ECR Network member Angelo Paolo L. Trias published an article entitled, "[Future directions in disaster governance: Insights from the 2018 Central Sulawesi Earthquake and Tsunami response.](#)" as well as two op-eds, "[Post-Covid disaster governance in Southeast Asia](#)" and "[Finding a new approach to water security in Southeast Asia.](#)"

ECR Network member Dr Alice Rudge (UCL) published an article about Batek people in Malaysia entitled, "[Hidden Likeness: Avoidance and Iconicity in Batek](#)" in *Journal of Linguistic Anthropology*.



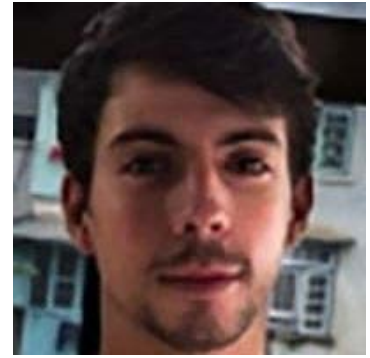
ECR Network member Dr Sokphea Young (UCL) wrote a piece on "[Cambodia between China and the West](#)" for the Rosa Luxemburg Stiftung website.

ECR Network member Dr Charlie Thame (Thammasat University) recently published new paper based on several years work on economic corridors across mainland Southeast Asia entitled, "[The economic corridors paradigm as extractivism: Four theses for a historical materialist framework. Review of International Studies.](#)"



ECR Network member Dr Khoo Ying Hooi (University of Malaya) shares information about her forthcoming book: "[Rethinking Human Rights and Peace in Post-Independence Timor-Leste Through Local Perspectives.](#)"

Last May, ECR Network member Dominique Dillabough-Lefebvre (LSE) helped organise and moderate this LSE South Asia Centre event "Military Myanmar: Fearing Freedom," in collaboration with LSE SEAC.



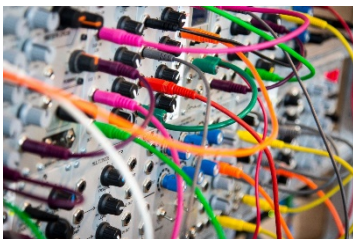
ECR Network member Dr Hongxuan Lin (NUS) recently published an article entitled "[Penan Storytelling as Indigenous Counter-Narrations of Malaysian Nation-State Developmentalism](#)" in *Positions: Asia Critique*.

ECR Network member Antonio Postigo (LSE) recently published an article in the Review of International Political Economy entitled "[Utilization of GSP schemes as a political and economic determinant of the utilization of North-South FTAs](#)."



---

## Summer Term Event Feedback



### Complete our Summer Term Events Survey

If you attended a SEAC event in May or June, please complete our short survey, so we can capture your experience and learn from audience

insights: [https://lse.eu.qualtrics.com/jfe/form/SV\\_0GwDHNLIHrRin4](https://lse.eu.qualtrics.com/jfe/form/SV_0GwDHNLIHrRin4)

---

## Opportunities

### Call for Papers: Cities and Climate Challenge in Southeast Asia

The ISEAS-Yusof Ishak Institute of Singapore, a Singapore-based institute focusing on Southeast Asian studies, is calling for papers for a new compendium under the topic "Cities and Climate Challenge in Southeast Asia," to address issues such as climate risks, inclusive and sustainable urban development and innovative interventions to enhance cities' mitigation and adaptation



goals. Abstracts (300-500 words) are to be submitted to [climatechange@iseas.edu.sg](mailto:climatechange@iseas.edu.sg) by **25 June 2021**.

Successful applicants will be invited to submit their first draft and attend an online workshop to discuss their papers in September-October. The compendium will be published by ISEAS in the last quarter of 2021.



## 10th Annual IPSA-NUS Summer School

The 10th Annual IPSA-NUS Summer School for Social Science Research Methods will be held online from July 5-16, 2021. It offers [a wide variety of quantitative, qualitative, and mixed methods courses](#) that provide participants with rigorous, hands-on training in state-of-the-art research methods.

For more information on the various Methods School courses and instructors, registration fees, and more, please visit <https://fass.nus.edu.sg/methods-school/> or contact us at [methods.school@nus.edu.sg](mailto:methods.school@nus.edu.sg).



## Call for abstracts for an online workshop: COVID and what next?

Calling doctoral students, postdocs, interested scientists and stakeholders, to participate in the upcoming online workshop, "COVID and what next? Methodological Implications for Digitalisation Research in Rural-Peripheral Areas," on Wednesday, 17th November 2021, 2pm to 6.30pm (CET).

Two keynote presentations (one methodological and one related to content), five thematic sessions in virtual subgroup rooms, and a concluding panel discussion (e.g., Lessons learned: the future of methodological data collection, how COVID is sustainably changing research practice) are planned.

Our workshop aims to provide a forum to discuss the methodological challenges of the pandemic for digitalisation research in rural areas. We address researchers as actors of knowledge production in order to reflect on pitfalls and limitations as well as on new opportunities for research. The digital format is intended to provide a forum to present intermediate and current work, but also to openly discuss uncertainties. Perspectives from the various disciplines of spatial research are welcome. Contributions can be submitted in German or English.

Please send your abstract (max. 500 words) no later than **31st August 2021** to Dr. Julia Binder [binder@b-tu.de](mailto:binder@b-tu.de) and Dr. Ariane Sept [ariane.sept@irs-leibniz.de](mailto:ariane.sept@irs-leibniz.de).



## Call for blog post contributions to the LSE Southeast Asia and Field Research Methods Lab Blogs

We welcome blog post submissions to the [LSE Southeast Asia Blog](#) about ongoing work and topics, or timely issues in the region.

The [LSE Field Research Methods Lab Blog](#) welcomes new contributions from early career researchers to share their hands-on fieldwork experiences. Given that many researchers encounter challenges during this pandemic, we would particularly welcome contributions that discuss pandemic-generated methodological challenges and use of alternative methods.

Blog posts should ideally be around 1000-2000 words, should be academically oriented, communicated in an accessible way, referenced, should be previously unpublished, and should be the unique work of contributing author(s). If you are interested in submitting a draft blog post, please email [seac.admin@lse.ac.uk](mailto:seac.admin@lse.ac.uk) for more information as well as a request for submission template, or to submit the draft post.

---

Don't forget, SEAC hosts a wealth of publications by staff and Associates and podcasts of past SEAC events, which you can access via the [SEAC Publications and Media page](#).



## [Supporting the LSE Saw Swee Hock Southeast Asia Centre](#)



If you like the work that SEAC is doing, please consider [supporting us](#) to help expand the impact of our activities.

---





The Saw Swee Hock Southeast Asia Centre (SEAC) is a multi-disciplinary Research Centre within the London School of Economics and Political Science.

Building on the School's deep academic and historical connections with Southeast Asia, SEAC seeks to foster world-leading academic and policy research with a focus on the Southeast Asian social and political landscape.

SEAC is LSE's gateway to understanding Southeast Asia.

The Saw Swee Hock Southeast Asia Centre was established with the generous support of [Professor Saw Swee Hock](#).

