



THE LONDON SCHOOL  
OF ECONOMICS AND  
POLITICAL SCIENCE ■



# SOUTHEAST ASIA

Research at LSE ■

ANNUAL REPORT  
2019/20

SAW SWEE HOCK SOUTHEAST ASIA CENTRE



# CONTENTS

MESSAGE FROM THE DIRECTOR	1
PEOPLE AT THE CENTRE	2
SEAC MANAGEMENT COMMITTEE	3
SEAC ASSOCIATES	4
VISITING FELLOWS	7
LSE-SOUTHEAST ASIA EARLY CAREER RESEARCHER (ECR) NETWORK	7
RESEARCH FOCUS	9
RESEARCH PROJECTS	10
The Urban Spectre of Global China: Mechanisms, Consequences and Alternatives for Urban Futures	10
Asian Capital and the Rise of Smart Urbanism	11
COVID-19 and Southeast Asia	11
RESEARCH FUND	12
FUNDED SCHEMES	13
Stipendiary Visiting Researcher Scheme	13
UK Postgraduate Southeast Asia Dissertation Prize	13
PhD Research Support Fund	13
LSE Student Dissertation Fieldwork Grant	14
Undergraduate Research Fellowship	15
Seminar Series and Networking Grant	15
PUBLIC ENGAGEMENT	16
PUBLIC EVENTS IN 2019/20	17
LSE SOUTHEAST ASIA FORUM 2019	19
ASEAS UK CONFERENCE	21
NETWORK BUILDING	21
PUBLICATIONS AND MEDIA	22
STUDENT ENGAGEMENT	23
FOUNDING GIFT	24
THE LONDON SCHOOL OF ECONOMICS AND POLITICAL SCIENCE	25
LSE students from Southeast Asia 2019/20	25



# MESSAGE FROM THE DIRECTOR



**I am pleased to report on a highly active and successful year for the Saw Swee Hock Southeast Asia Centre (SEAC). While the COVID-19 pandemic since early 2020 has necessitated the postponement of several of the Centre's spring and summer activities, the 2019/20 academic year is to be remembered as one marked by accelerated development and significant achievements that set the stage for SEAC's long-term success and impact as a research centre.**

Indeed the highlight achievement of the 2019/2020 academic year has been the successful application for SEAC becoming established as a full SE Research Centre meaning it now reports directly to the SE Research Committee. The School's approval for SEAC's new status is an endorsement of the efforts made in the past year towards a greater focus on scholarly research while retaining its status as the key hub for public engagement on Southeast Asia in the UK. This new status enhances SEAC's global reputation while opening up many opportunities for its future development.

In addition to two successful external research grant applications housed within SEAC since 2019 (see Research Projects section) and the continuation of the Research Fund, the Centre's shift towards scholarly research has manifested through its widening research-based public events programme (see Public Engagement section) and new schemes (see Funded Schemes section). While consolidating the new schemes introduced in the previous year such as the Student Visiting Researcher Scheme and Student Dissertation Award Grant, SEAC has also introduced new research centred initiatives since 2019 which include:

- **Undergraduate Research Fellowship** providing the opportunity for two undergraduates to support SEAC Associates on their research projects. In 2019/20 SEAC secured funding from the SE Eden Centre for two fellowships and this has been so successful that SEAC has earmarked internal funding to continue the scheme in subsequent years.
- **LSE Saw Swee Hock Southeast Asia Centre UK Postgraduate Dissertation Prize** created to showcase the best postgraduate student research on Southeast Asia in the UK.
- **PhD Research Support Fund** introduced to provide funding toward doctoral field research expenses in Southeast Asia and conference attendance for SE PhD students whose research relates to Southeast Asia.

Our schemes involve rigorous application review by SEAC Associates whose membership has now grown to 19. SEAC Associates comprise a mix of SE and non-SE experts on widening disciplines and are currently based in the UK, continental Europe and Asia. Thank you to the SEAC Associates for working collectively during the past year to bring SEAC to where it is today.

In addition, the SEAC website has been significantly enhanced to include a webpage dedicated to research and public engagement outputs from SEAC staff and Associates. The new Publications and Media webpage ([lse.ac.uk/seac/Publications-and-Media](https://lse.ac.uk/seac/Publications-and-Media)) features 18 books, 56 research articles and 10 book chapters published since 2014 and a most all of which are hyperlinked for instant download. The page also includes a list with links to over 50 audio podcasts of past SEAC events.

SEAC's Early Career Researcher (ECR) Network has seen great successes since its inception in February 2019. As of June 2020, the Network has nearly 90 members, more than a third of whom are based outside the UK. In a relatively short time, the Network has helped produce a growing global community of ECRs whose contributions to research and public engagement on Southeast Asia are rapidly increasing.

The accomplishments SEAC has seen during the past one year would not have been possible were it not for its passionate and collegial staff. A massive thanks goes to them for their dedication that has immensely helped foster a sense of community at SEAC and across the world, which will undoubtedly lay the foundation for SEAC's continued development.

I would like to take this opportunity to wish you and your loved ones happiness, health and well-being during this challenging period.

**Professor Hyun Bang Shin**

Director, LSE Saw Swee Hock Southeast Asia Centre

# PEOPLE AT THE CENTRE



**Hyun Bang Shin**

*Centre Director and Professor of Geography and Urban Studies in the Department of Geography and Environment at LSE*

Professor Shin's research centres on the critical analysis of the political economy of urbanisation with particular attention to cities in Asian countries such as China, Malaysia, the Philippines, Vietnam, Singapore and South Korea. His research themes include the politics of displacement, gentrification, real estate speculation, the right to the city, mega events as urban spectacles, circulation of urbanism and policy transfer.

Professor Shin has published major international journals such as the *Annals of the American Association of Geographers*, *Antipode*, *Urban Studies* and *City* and has contributed to numerous books on the above themes. His most recent books include *Neoliberal Urbanism, Contested Cities and Housing in Asia* (Palgrave Macmillan 2019), *Planetary Gentrification* (Polity Press 2016), *Global Gentrifications: Uneven Development and Displacement* (Polity Press 2015). Other forthcoming books include *The Political Economy of Mega Projects in Asia* (Routledge) and *Exporting Urban Korea? Reconsidering the Korean Urban Development Experience* (Routledge).

Professor Shin is a trustee of the Urban Studies Foundation, sits on the international advisory board of the journal *Antipode* and serves on the editorial boards of the journals *International Journal of Urban and Regional Research*, *City Urban Geography*, *City Culture and Society*, *Space and Environment*, *China City Planning Review*. He is to serve on the international journal *International Journal of Urban and Regional Research* as the incoming editor from January 2021. He is also a co-organiser of the Urban Salon, an interdisciplinary London forum for architecture, cities and international urbanism, and edits the *SEAS Research Methods* blog.



**Lee Mager**

*Centre Manager*

Until July 2020, Dr Mager held responsibility for SEAC's day to day

operations, including administrative of financial, human and physical resources, implementation of events and programmes, and managing communications and outreach strategies, including publications, in addition to supporting the Centre Director with strategic planning, stakeholder engagement and reporting. Dr Mager is a specialist in higher education management with particular expertise in the university student experience and is an APMG certified Change Management Practitioner. He holds professional certifications in PRINCE2 Project Management and MSP Programme Management. He was the winner of SE's 'Unsung Hero' prize in 2015 at the Schools'inaugural Values in Practice Awards during his appointment as Deputy Department Manager and Undergraduate Manager in the Department of Geography and Environment. Dr Mager holds a PhD and MSc in Sociology from SE, for which he won the Hobhouse Memorial Prize for Best Overall Performance in the Department of Sociology, as well as the Hobhouse Dissertation Prize.



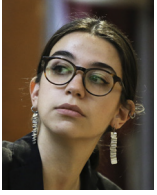
**Do Young Oh**

*Interim Centre Manager and Research Officer*

As interim Centre Manager since July 2020, Dr Oh holds

responsibility for the Centre's day to day operations, including administrative of financial, human and physical resources, implementation of events and programmes, and managing communications and outreach strategies, including publications, in addition to supporting the Centre Director with strategic planning, stakeholder engagement and reporting. Dr Oh is a so-called Research Officer for two Centre projects, *Asian Capital and the Rise of Smart Urbanism* and *COVID 19 and Southeast Asia*. Dr Oh holds a PhD in Regional and Urban Planning from SE and an MSc in International Planning from UC. His research interests focus on comparative urbanism and postcolonialism in East Asia. His doctoral thesis investigated the evolving university city relationship through a comparative analysis of East Asian urbanisation processes. It was shortlisted for the Benjamin CAS Book Prize in 2019 (Dissertation in the Social Sciences). Prior to joining SE, Dr Oh worked in the fields of architecture and urban planning in South Korea and the United States.





#### Margherita Scalisi

*Graduate Intern:  
Communications  
and Events*

Between September  
2019 and June 2020

Ms Scalisi supported the Centre in a range of aspects of event planning, organisation, promotion and communications, in addition to content creation and administration for the SEAC's public communication channels. She also contributes to the Centre's outreach activities, its publications and funding opportunities. Ms Scalisi was awarded a BA in Politics and Economics from the University of Manchester (2017) and an MSc in International Relations from SE (2018) where she completed her thesis on an analysis of the 'failed state' debate. Before joining the Centre, she was working in communications and programming for the United Nations Development Programmes Asia and the Pacific Regional Hub in Bangkok, Thailand, and working as a freelance journalist.

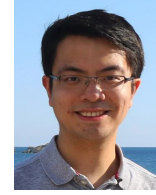


#### Murray McKenzie

*Postdoctoral Research  
Assistant and Research  
Officer*

Dr McKenzie assists  
British Academy

funded research project *The Urban Spectre of Global China: Mechanisms, Consequences, and Alternatives for Urban Futures* and undertakes SEAC's project on *COVID 19 and Southeast Asia*. He holds a PhD in Geography and Urban Studies from UC and an MA in Community and Regional Planning from the University of British Columbia. His research focuses on the roles of the arts, culture and the re-contestation of processes of urban growth and change. His doctoral thesis investigated how collaborative artistic practices have served as platforms for community building in urban villages of outer Beijing. Prior to joining SE, Dr McKenzie was a Postgraduate Teaching Assistant at UC, resided as a Visiting Senior Scholar at Peking University and performed as a touring musician in Europe, North America and East and Southeast Asia.



#### Yi Jin

*Postdoctoral Research  
Assistant*

Between April 2019  
and January 2020  
Dr Jin assisted SEAC's

British Academy funded research project *The Urban Spectre of Global China: Mechanisms, Consequences, and Alternatives for Urban Futures* until January 2020. Dr Jin holds a PhD in Human Geography and Urban Studies from SE and an MA in Sociology from Peking University. His research focuses on the political, economic and social dimensions of urban change, particularly in China. Dr Jin is also working on the changing logic of urban governance under young Chinese urban policies and the issue of urban materiality.

# SEAC MANAGEMENT COMMITTEE

**The Management Committee convenes meetings to discuss prioritised agendas and help ensure that the Centre's activities and resources are effectively managed in accordance with the Centre's objectives and the School's policies and guidelines. The Committee is also expected to provide consultation for the Centre's direction and development and make contributions to the Centre's activities.**

#### Members\*

- Professor Hyun Bang Shin (Chair, Centre Director)
- Dr Lee Mager (Centre Manager)

- Professor Susana Mourato (ex officio Head of the Department of Geography and Environment)
- Dr Catherine Aerton (SEAC Associate, Dept of Anthropology)

- Professor John Sde (SEAC Associate, Dept of Government & Dept of International Relations)

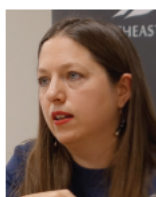
\*For the 2020/21 Academic Year, Prof. Kent Deng (Department of Economic History) is joining the Management Committee. Dr Do Young Oh (new Interim Centre Manager) and Prof. Steve Gibbons (new Head of the Department of Geography and Environment) are replacing Dr Lee Mager and Prof. Susana Mourato respectively.

# SEAC ASSOCIATES



**Catherine Allerton** is Associate Professor in the Department of Anthropology SE and a specialist in the anthropology of

s and Southeast Asia with research interests in children and childhoods migration kinship place and landscape



**Katherine Brickell** is Professor of Human Geography at Royal Holloway University of London. She holds 15 years of area focused expertise in Cambodia

where she researches the gendered geographies of domestic and working female migration alongside women forced evictions and most recently 'modern' slavery in the construction industry



**Chua Beng Huat** received his PhD from York University Canada. Concurrently he is the Provost Chair Professor in the Faculty of Arts and Social Science and

Head of the Department of Sociology at the National University of Singapore (NUS). He is also the Research Leader of Cultural Studies in Asia Research Cluster at the Asia Research Institute NUS. He is currently Chairman of the Board of Trustees at Temenggong Art Studio Residence a non-profit visual arts institution in Singapore



**Kent Deng** is Professor in Economic History in the SE Department of Economic History. He leads the SE postgraduate module "Economic Development

of East and Southeast Asia" and his research interests and writing include the rise of the state in the economic life of pre-modern China and the maritime economic history of Asia



**Tim Forsyth** is Professor of Environment and Development at SE. He has six years work and professional experience with

Southeast Asia and is fluent in Thai with skills in Indonesian Bahasa and Burmese. His research focuses on the politics of environmental policy making with a particular interest in understanding local environmental risk and livelihoods and reflecting this knowledge in global environmental policies and assessments



**Jürgen Haacke** is Associate Professor in International Relations at SE. He teaches and researches on the international relations of Southeast Asia

especially the foreign and security policies of Southeast Asian states, the role and policies of major powers in relation to the ASEAN region and regional multilateral cooperation. He has published particularly widely on ASEAN and Myanmar's foreign policy



**Sin Yee Koh** is Senior Lecturer in Global Studies School of Arts and Social Sciences Monash University Malaysia and is Co-investigator for the SEAC

Research Project 'The Urban Spectre of Global China: Mechanisms, Consequences and Alternatives for Urban Futures'



**Nicholas Long** is Associate Professor in Anthropology at SE. Dr Long is a specialist in the anthropology of Indonesia and the Malay world with a particular

focus on the ways political change influences the experience of self-agency and relations. Dr Long's monograph *Beng Maayan* Indonesia offers a new framework for the study of political decentralisation one which foregrounds the effective and experiential dimensions of political change



**Munir Majid** was SEAC Associate until January 2020. He is Chairman of Bank Muamalat Malaysia Berhad of the CMB ASEAN Research Institute and of the ASEAN

Business Advisory Council Malaysia. He is also the President of the ASEAN Business Club and a Visiting Senior Fellow at SEDEAS. Dr Majid's main interest is in the evolution of the regions contemporary international affairs under ASEAN



**Duncan McCargo** is Director of the Nordic Institute of Asian Studies and Professor of Political Science at the University of Copenhagen. He is also Professor of Political

Science at the University of Leeds. Since 2015 he has held a shared appointment at Columbia University where he is a Visiting Professor of Political Science. In 2010 Professor McCargo was awarded an honorary doctorate by Mahasarakham University in Thailand



**Deirdre McKay** is Reader in Social Geography and Environmental Politics at Keele University and Chair of the Association of Southeast Asian Studies UK (ASEAS

UK). Dr McKay's research draws on both social/cultural geography and social anthropology to explore peoples place-based experiences of globalisation and development. Her fieldwork is in areas of the global South and with migrant communities from developing areas who have moved into the world's major cities



**Catalina Ortiz** is Associate Professor in Building and Urban Design in Development at The Bartlett Development Planning Unit, UCL. Dr Ortiz holds

a PhD in Urban Planning and Policy from the University of Illinois at Chicago as a bright scholar in addition to an MA in Urban and Regional Studies and a BA in Architecture from the National University of Colombia





### James Putzel

is Professor of Development Studies at SE. Professor Putzel is well known for his research in the Philippines where he has

maintained active research since 1984. His book *A Captive and the Politics of Agrarian Reform in the Philippines* (1992) is recognised as a classic on the topic and remains influential in current policy actions and debates in the country. His research also includes work on nationalism, comparative politics of development in Southeast and East Asia, democratic transition, and the role of foreign aid and NGOs in development.



**Danny Quah** is the Dean and Ka Sheng Professor in Economics at the Lee Kuan Yew School of Public Policy, National University of Singapore. Professor

Quah's research interests include income inequality, economic growth and international economic relations. Professor Quah is Commissioner on the Spence Stirling Commission on Global Economic Transformation, Member of the Executive Committee at the International Economic Association, and Senior Fellow at the Asian Bureau of Finance and Economics Research.



**Jonathan Rigg** is Chair in Human Geography at the University of Bristol and Professor in the Department of Geography at the National University of

Singapore. Prior to that, he was Head of the Geography Department at Durham University in the UK. He was a senior lecturer at the School of Oriental & African Studies, London University, a British Academy Post Doctoral Research Fellow and PhD student. He was Director of the Asia Research Institute at the National University of Singapore from 2016–2019.



### Kirsten Schulze

is Associate Professor in International History at SE. She works on communal and separatist conflicts as well as

nationalism in Indonesia and the Middle East. Her publications on Indonesia include *The Ethnic Nationalism in Poso, Ambon and West Kalimantan* (2017), *The Islamic State and Southeast Asia* (2016) and *Transforming the Aceh Conflict from Military Solutions to Political Agreement* (2013).



**John Sidel** is the Sir Patrick Giam Professor of International and Comparative Politics at SE. He is the author of *Capital, Coercion and Crime: Bossism in the*

*Philippines* (1999), *Philippine Politics and Society in the Twentieth Century: Colonial Legacies, Postcolonial Trajectories* (2000), *Riot, Pogrom, Jihad: Religious Violence in Indonesia* (2006), *The Islamist Threat in Southeast Asia: A Reassessment* (2007), *Thinking and Working Politically in Development: Coalitions for Change in the Philippines* (with James Austin) (2020) and forthcoming book *Republican Communalism: Cosmopolitan Origins of Revolution in Southeast Asia*.



### Thomas Smith

is Assistant Professor in Environmental Geography at SE. He teaches a number of environmental courses, focusing on innovative

technology-enhanced experiential learning and field-based education in geography. He joined the Department in 2018, having previously been a lecturer at Kings College London. He holds a PhD in Physical Geography from Kings College London and has held visiting fellow posts at the National University of Singapore, Monash University Malaysia, University of Wollongong (Australia) and University of Brunei Darussalam.



### Hans Steinmüller

is Assistant Professor in the Department of Anthropology at SE and a specialist in the anthropology of China. He has conducted

long-term fieldwork in the Ensheng region of Hubei Province in central China, focusing on family work, ritual, and the local state. The main object of his research is the ethics of everyday life in rural China and an anthropological approach to the study of sovereignty which involves ethnographic works in the Wa State of Myanmar.



**Felicia Yap** was SEAC Associate until January 2020. She is affiliate of the Centre of South Asian Studies in Cambridge. She was previously a Junior

Research Fellow at Wolfson College, Cambridge, a Scout Research Fellow at the Institute of Historical Research, London, and a Senior International History at SE. Dr Yap's research has centred on the effects of the Japanese occupation of Southeast and East Asia.



### Yimin Zhao

is Assistant Professor in Urban Planning and Management at the School of Public Administration and Policy at Renmin University of

China and is Co-investigator for the SEAC Research Project 'The Urban Spectre of Global China: Mechanisms, Consequences and Alternatives for Urban Futures'.





SOUTHEAST ASIA



le Lim

Dr Champa Patel



# VISITING FELLOWS



**Merlyna Lim** was SEAC Visiting Senior Fellow from 21 October 2019 to 1 December 2019

She is Associate Professor and Canada Research Chair in Digital Media and Global Network Society at Carleton University Canada. An ANU Media Lab founder/director, Dr Lim's research interests revolve around the mutual shaping of technology and society and political culture of technology, especially digital media and information technology, in relation to

issues of justice, democracy and civil/participatory engagement.

Dr Lim is an interdisciplinary scholar who has published extensively in various disciplines including communication and media studies, religious studies, journal, urban studies/sociology, geography, anthropology. As a student of Middle East studies, information and library science, computer science and information systems.

## LSE-SOUTHEAST ASIA EARLY CAREER RESEARCHER (ECR) NETWORK

SEAC's ECR Network has seen great successes since its inception in February 2019. As of June 2020, the Network has 90 members, more than a third of whom are based outside the UK. Below is a screenshot of the SEAC interactive global map of network members (accessible at [se.ac.uk/seac/people/ECRNetwork](https://se.ac.uk/seac/people/ECRNetwork)), which permits anybody to search by country, specialism, and to locate researchers with similar interests and to promote increased collaboration and scholarly work on Southeast Asia. The Network is active and engaged with regular news and opportunities of interest sent to SEAC from its members. SEAC collects these and sends out fortnightly mailouts during term time. SEAC has also set up a Twitter group for ECR Network members, which has helped promote sharing the work and ideas and useful opportunities.



## LSE-Southeast Asia Early Career Researcher (ECR) Network

Overview of ECR Network members (as of June 2020)

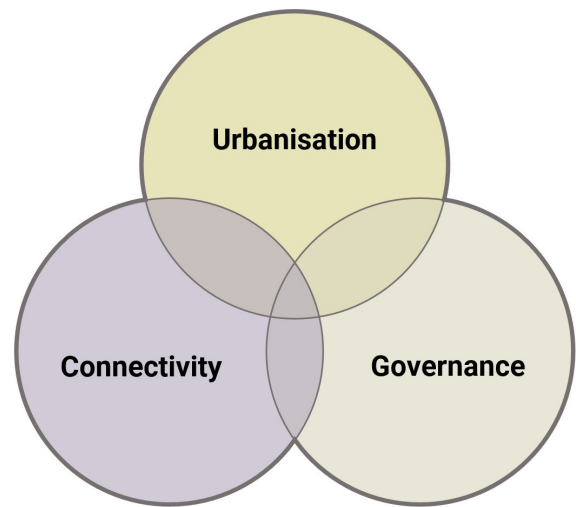
Country research specialism	Female	Male	Total
ASEAN / transnational	3	9	12
Cambodia	4	4	8
Indonesia	13	8	21
Laos	3	3	6
Malaysia	5	5	10
Myanmar	5	4	9
Philippines	3	4	7
Singapore	4	3	7
Thailand	3	2	5
Vietnam	3	2	5
<b>Total</b>	<b>46</b>	<b>44</b>	<b>89</b>





# RESEARCH FOCUS

SEAC generates and supports interdisciplinary research on Southeast Asia by bringing together researchers and providing a platform for critical debates for analysis of the region in global contexts. The Centre encourages wider perspectives, paying attention not only to intra-regional or local dimensions but also to the ways in which Southeast Asia can enter into conversation with its neighbouring regions and the world. SEAC's focus is on three key, intersecting themes: urbanisation, connectivity and governance:



**Urbanisation:** to enquire into urbanisation beyond demographic transformations and examine contemporary and historical experiences that encompass the politics and the economics of urbanisation/city making. Topics of interest for example may include but are not limited to the promotion of urbanisation as a state project, the politics of land use, displacement and dispossession, real estate, gentrification, critical discourses on the use of Asian cities as reference points for (re)developing cities in the Global South.



**Connectivity:** to examine transregional or international connectivity in terms of people, built environments and nature. The theme may possibly concern, for example, policy networks, infrastructure, connections, specific economic zones as nodes, points for cross-border investments and trades, transnational real estate drives, trade relations, historical and contemporary migration, kinship or religious links, interconnected ecosystems such as the Mekong River basin.



**Governance:** to explore the governance that involves transnational, national and sub-national actors who play the role directly and/or indirectly in the process of making decisions that may have socio-economic impacts upon people and places. Examples of topics include state-business relations, transnational or regional co-operation, grassroots politics of democratisation, gender politics, ethnic and cross-border relations, communal conflicts.

# RESEARCH PROJECTS

## The Urban Spectre of Global China: Mechanisms, Consequences and Alternatives for Urban Futures

SEAC Director Professor Hyun Bang Shinn was awarded a British Academy grant in 2019 as part of its 'Tackling the UK's International Challenges' programme. The project examines four large-scale property development projects of Chinese capital to question the ways in which the urban has been reconfigured by China's global expansion. The four sites are located in London, Iskandar Malaysia, Beijing and Shanghai.

This project draws on methods of comparative urbanism and multisited ethnography aiming to uncover the differentiated modes of urban production in the Global China era and to generate new insights for inclusive approaches to urban space, nature and modernity.

This international collaborative project critically examines the dynamics of urban political economy and contemporary urban planning in a rapidly shifting geopolitical setting.

By focusing on the local, national and global mechanisms and impacts of Chinese urban spectres, the project aims to deepen our understandings of interrelated urban future issues.

### Project Team:

**Principal Investigator:** Professor Hyun Bang Shinn, Director of SEAC and Professor of Geography and Urban Studies in the Department of Geography and Environment, SE

**Co-Investigators:** Dr Srin Yee Koh, Senior Lecturer in Global Studies, School of Arts and Social Sciences, Monash University Malaysia

Dr Yimin Zhao, Assistant Professor in Urban Planning and Management, School of Public Administration and Policy, Renmin University of China

**Research Assistants:** Dr Yijun (April 2019 – January 2020)  
Dr Murray McKenzie (March 2020 – Present)

**Project Advisors:** Professor Cheng Kwan, Professor of Sociology at University of California, Los Angeles  
Dr Choon Piew Pow, Associate Professor in the Department of Geography, National University of Singapore





## Asian Capital and the Rise of Smart Urbanism

In September 2019 SEAC initiated a new research project that aims to analyse and compare how Asian cities have risen to become reference points for the development of cities in the Global South. The project examines the experience of Asian capital involved in building new cities branded as smart cities in Kuwait and the Philippines. The Kuwait study is funded by the Kuwait programme Research Grant from the SE Middle East Centre.

### Project Team:

#### Principal Investigator:

Prof. Hyun Bang Shin, Director of SEAC and Professor of Geography and Urban Studies in the Department of Geography and Environment, SE

#### Research Officer:

Dr. Do Young Oh, SE SEAC, SE Middle East Centre

**Overseas Research Assistant:** Mr. Marco Sardo (Independent Consultant)



## COVID-19 and Southeast Asia

COVID-19 presents huge challenges to governments, businesses, civil societies and people from all walks of life, but its impact is so very much uneven and variegated. COVID-19 also reveals the existing contradictions and inequalities in our society and compels us to question what it means to return to the normal. This project is a desk-based archival research to compile the national published responses to the COVID-19 crises, reflect upon what the crises mean for urbanisation, governance and connectivity in Southeast Asia, and contemplate the post-COVID-19 urban futures.

### Project Team:

**Principal Investigator:** Prof. Hyun Bang Shin, Director, SE SEAC

**Research Officer:** Dr. Do Young Oh, Research Officer, SE SEAC

**Research Officer:** Dr. Murray McKenzie, Research Officer, SE SEAC



# RESEARCH FUND

The Research Fund is available to all LSE academic staff at Assistant Professor/Assistant Professorial Research Fellow level or above, in addition to SEAC Associates outside LSE. The aim is to fill a gap in the support available to, and to promote high-quality research on the region by LSE academics in the region. In 2019/20 a new project has been awarded, the details of which are provided below, along with the details of the ongoing project awarded in the previous Academic Year.

## 2020 SEAC Research Fund projects



**Project title:** The Keptocrats' Accomplishment: The Political Economy of Professional Intermediaries and the Power of Poor Countries

**Project Summary:** This project examines the role played by lawyers, accountants and other professional service providers in enabling the transfer of 'hot' money out of resource-rich but people-poor countries and into the financial systems of developed economies in the West and increasing the East. High-profile investigations by journalists exposing the IMF, the Panama Papers scandal, and the Panama Papers scandal have highlighted the part played by professional intermediaries and sometimes internationally branded firms operating in major financial centres in helping global mobility to move funds and protect 'golden' assets. The project asks what drives these professionals as they manage the tensions between the pressure to bring in new client revenue and the obligation to comply with anti-money laundering requirements. It analyses and compares four jurisdictions: Singapore, Hong Kong, London and Dubai. It examines how the behaviour of professional service providers in each jurisdiction has changed in response to the historical evolution in the institutions regulating money laundering and to major media investigations exposing professional service provider complicity.

**Principal Investigator:** Dr Omar Shahabuddin McDoom, Assistant Professor in Comparative Politics, SEAC Department of Government

**Proposed project dates:** June 2020 – December 2021



**Project title:** Strengthening Landscape Governance: comparing institutional designs under rapid change in Papua Indonesia

**Project summary:** Rural landscapes throughout Southeast Asia are changing because of agricultural commercialisation and a growing concern about forest conservation and reforestation. But are these new environmental initiatives successful and effective? In some locations such as Papua, the most eastern province of Indonesia on the border with Papua New Guinea, local people and human rights groups are worried that forest policy will actually hurt local agriculture and reduce the opportunities for development experienced by local people. In this new research project beginning in January 2020, two members of SEAC will undertake detailed field research to identify lessons for integrating national forest policy with local development in the Indonesian province of Papua. The research will compare two zones where commercialisation and forest policies have been undertaken in different ways. The objectives of this work will be to advise national and international approaches to forest policy and to represent the views of local people.

**Principal Investigator:** Professor Timothy SEAC Associate and SEAC Department of International Development

**Co-Investigator:** Professor G. Shepherd, Visiting Professor, SEAC Department of Anthropology

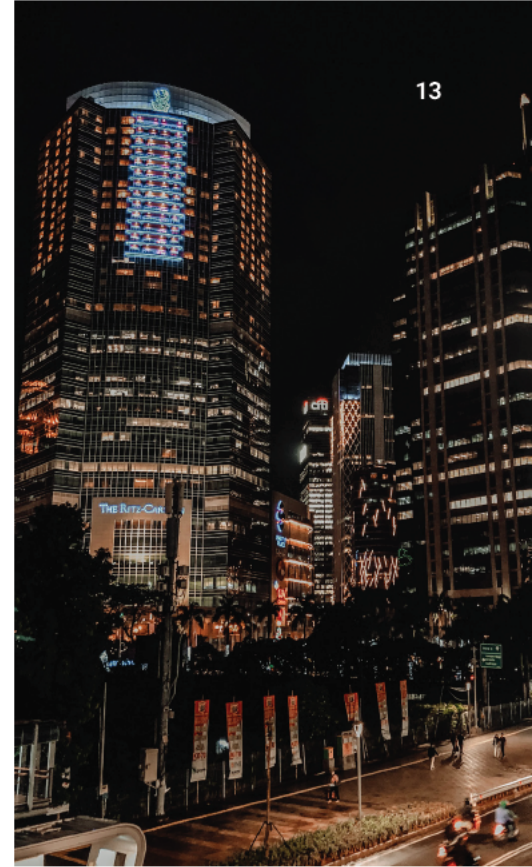
**Proposed project dates:** January 2020 – July 2020 (Project dates postponed due to the ongoing COVID-19 pandemic)



# FUNDED SCHEMES

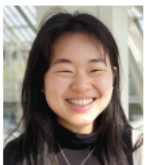
## Stipendiary Visiting Researcher Scheme

SEAC's Stipendiary Visiting Appointment scheme launched in 2019 provides an opportunity beyond the ongoing running and continuing Standard Visiting Appointment scheme for which applicants have always been expected to secure their own funding. Visiting researchers form an integral part of SEAC's research culture and community while also forming SEAC's growing global community. SEAC welcomed Dr Merlyna Lim from Carleton University, Canada who visited SEAC between November and December 2019 on the standard visiting appointment scheme during which time she spoke at the 2019 Southeast Asia forum, delivered a SEAC seminar on social media and politics in Southeast Asia and led a research masterclass on digital media for SE PhD students. Since 2019, SEAC has offered 8 visiting appointments, 6 of whom benefit from the stipendiary scheme.



## UK Postgraduate Southeast Asia Dissertation Prize

In September 2019, SEAC introduced a new national postgraduate dissertation prize to showcase outstanding student social science research in the UK on Southeast Asia. With a £200 prize awarded to the winner, submissions for consideration of the prize were received from numerous UK university departments representing a range of disciplines and a lot of which were of excellent quality.



### Winner

**Isabelle Lim,**  
MPhil in Criticalism and  
Culture, University of  
Cambridge

**Dissertation title:** *Planting feet: Environmental imagination in the poetry of Edwin Thumboo*

Isabelle Lim is a writer interested in the environment, literature and postcolonial criticism. She holds an MPhil from the Faculty of English at the University of Cambridge

where she focused on postcolonial ecology, tracing the contours of an environmental imagination in the work of Edwin Thumboo. She edits the Mynah Magazine, a long-form annual publication featuring Singapore stories and her writing appears in CHA, An Asian Journal. She currently reports on the environment, climate change and data for Channel News Asia. "Extremely well written and insightful analysis of Thumboo's poetry from a 'green perspective'." SEAC reviewer

## Highly commended

**Joshua Chee** MSc in History of International Relations, SE

**Dissertation title:** *The growth of colonial intelligence networks in Singapore during the Great War, 1914-1918*

Joshua Chee graduated from SE's MSc History of International Relations programme with Distinction. His dissertation on the growth of colonial intelligence networks in Singapore during the Great War (1914-18) won the Medcott Prize for best MSc dissertation in the International History Department (2018-19). Joshua obtained his BA (Hons) in History from the National University of Singapore.

"A lot of extraordinary data and insights." SEAC reviewer

## PhD Research Support Fund

SEAC is pleased to introduce a new initiative to support PhD students at SE whose research relates to the Southeast Asia region. The new scheme will operate from the 2020/21 Academic Year and provides funding towards field research expenses in Southeast Asia (maximum £2,000) and conference attendance (maximum £500).



"My experiences during my stay in the SEAC at LSE have been extremely positive. I found the Centre a very stimulating place to work and a great hub to connect with scholars of Southeast Asian studies and other disciplines."

**Dr Merlyna Lim, SEAC Visiting Senior Fellow 2019/20**

## LSE Student Dissertation Fieldwork Grant

After a strong pilot year in 2018/19 SEAC's student fieldwork grant scheme for undergraduate and taught master's students at LSE undertaking the reassessed dissertation fieldwork in the Southeast Asia region continues to be a success with the number of awards granted in 2019/20 having doubled. The scheme is designed in part to support student research on Southeast

Asia and in part to promote such research among students as yet unsure of the reassessed dissertation topic. The grant provides up to a maximum of £500 per awardee towards research expenses which can go towards categories like accommodation, subsistence, local services such as translation or transcription.

The 2019/20 awardees are pleased below. Given the COVID-19 pandemic, awardees have been assured that SEAC is very

much aware of significant restrictions and that we are sympathetic to any changes to the nature, scope and timing of the proposed research, including researching remotely if appropriate and a change to the original budget. Awardees have also been encouraged to pay close attention to LSE and governmental news and health and safety updates in and in line with the reassessment in order that appropriate duty of care for both themselves and any research participants is ensured.

"My research is groundbreaking in its scope as this is the first academic research conducted with the Bangsamoro Islamic Women's Auxiliary Brigade (BIWAB). Since BIWAB's inception in the 1970s, the Moro Islamic Liberation Front (MILF) concealed BIWAB's existence and access to them was restricted.

Through SEAC's grant I was able to meet the founders of BIWAB in Cotabato City in Southern Mindanao and conduct interviews with them to learn about their rich stories. Through the face-to-face interviews I was able to document the history of BIWAB and gather valuable data that shed light on their experiences as child soldiers, their contribution to the liberation movement and their current roles in the post-conflict context."

**Rio Grace Otara, Dissertation Grant Awardee**



### Rahma Anggraini

**Degree:** MSc in International Development and Humanitarian Emergencies

**Proposed fieldwork location:** Indonesia

**Topic:** Contestation within Civil Society and Policy Changes: Examining the Impact of Advocacy by Different Women Groups to the Bill Legalization Process in Indonesia



### Hayli Chiu

**Degree:** BSc in Environment and Development

**Proposed fieldwork**

**location:** Malaysia

**Topic:** Individual Decisions in Agent Based Models: An Analysis of the Influence of Southeast Asian Haze Episodes on the Migration Patterns in Malaysia



### Jonathan Formella

**Degree:** Co-umbia SE Dual MA/MSc in International and World History

**Proposed fieldwork location:** Vietnam

**Topic:** Exhumed Furies: Maoist Radicalism in the Chinese and Vietnamese Revolutions

### Saanjh Gupta



**Degree:** MSc in Employment, Co-operation and Globalisation

**Proposed fieldwork**

**location:** Singapore

**Topic:** Hawker Centre Redevelopment and Singaporean National Identity, 1968-86



### Zhen Jun Ai Lim

**Degree:** MSc in Urbanisation and Development

**Proposed fieldwork**

**location:** Thailand

**Topic:** Phuket's Smart City Surveillance: an investigation of its Eagle Eyes CCTV Network



### Woon Wei Look

**Degree:** MSc in City Design and Social Science

**Proposed fieldwork**

**location:** Singapore

**Topic:** What is homelessness? Defining homelessness and a critical examination of governmental responses in Singapore



### Rishik Elias Menon

**Degree:** MSc in Criminal Justice Policy

**Proposed fieldwork**

**location:** Singapore

**Topic:** Crime Prevention and the Compliance Industrial Complex: Analysing the Ideas, Interests and Institutions which Influence Singapore's Anti Money Laundering Regime



### Cheyenne Ong

**Degree:** BSc in History and International Relations

**Proposed fieldwork**

**location:** Singapore and Malaysia

**Topic:** The extent to which Chinese communists influenced student and labour politics in Singapore from 1955-1963



### Leanne Sajor

**Degree:** MSc in Negotiation and Social Science

**Proposed fieldwork**

**location:** Philippines

**Topic:** Topographies of resistance: implications of the Human Rights Impact Assessment on movements against inequalities in the Manila Bay Project



### Johanna Sutton

**Degree:** MSc in Urbanisation and Development

**Proposed fieldwork**

**location:** Singapore

**Topic:** Making cities more resilient: blue-green infrastructure and governance



## Undergraduate Research Fellowship

The new Undergraduate Research Fellowship (URF) scheme announced in December 2019 has been a resounding success in its pilot year. The scheme seeks to engage undergraduate students with the research of SEAC Associates and URFs are expected to gain important insight into the work of an academic in planning, conducting and disseminating scholarly research. The scheme's first year operation is supported by the funding SEAC secured from the SE EDEN Centre as part of its Undergraduate Research Internship scheme. Given the strong demand from students and the positive reports from Associates on the quality of URFs, SEAC has decided to fund two URFs per year for the foreseeable future.

### Project 1: Thailand's Changing Electoral Politics

SEAC Associate Professor Duncan McCargo is working on a book about the emergence of new political forces before the 2019 Thai elections to be published by NIAS Press. The book will focus on parties, leaders and voters, drawing on issues discussed at two SEAC events

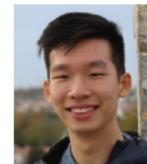
in which Professor McCargo participated in 2018 and 2019. The co-author will be Anyarat Chatthiraku, currently an independent scholar based in Amsterdam.



### Project 2: Defining the Haze Season in Southeast Asia

SEAC Associate Dr Thomas Smith is leading a project seeking to address questions surrounding the haze, including when the haze season is perceived to start and end. How severe or prolonged must a haze event be before people begin to refer to it

as a season? Whether people plan their lives around the haze season. The work for this project comprises a range of methodologies, including social media textual analysis, news media analysis, Google search term analysis and surveys of students from the region attending SEAC.



**URF**

**Vernon Yian**

Second year BSc Politics and Philosophy, SEAC

**URF work period:**

May 2020 – September 2020

## Seminar Series and Networking Grant

The Seminar Series and Networking Grant scheme launched in the 2019/20 academic year is open to SE academic staff and SE based early career researchers (including PhD students).

The fund contributes towards seminar series, study groups or networking events focusing on social science issues relevant to Southeast Asia, aligning with one or more of SEAC's core research themes of urbanisation, connectivity and governance. Successful applicants take on responsibility and accountability for organising events and represent SEAC as organisers and chairs during events, working closely with SEAC for the preparation to coordinate activities and the reporting.



# PUBLIC ENGAGEMENT

SEAC has been actively pursuing public engagement through its provision of events that range from research seminars to roundtable debate and masterclasses. The table below provides an overview of past events at SEAC (excluding the LSE Southeast Asia Forum). SEAC has seen quite a substantial increase in number of speakers per year since 2018/19, and the overall historical gender balance is close to 50/50, in large part thanks to 60%+ female speakers since 2018/19.

Academic Year	2015/16	2016/17	2017/18	2018/19	2019/20*	Total
Number of Events	20	14	22	12	11	79
Number of Speakers	19	15	27	55	23	139
<b>By Gender</b>						
Male	16	12	18	25	7	78
%	84.2%	80.0%	66.7%	45.5%	30.4%	56.1%
Female	3	3	9	30	16	61
%	15.8%	20.0%	33.3%	54.5%	69.6%	43.9%
<b>By Region of Home Institution</b>						
UK	12	4	14	38	10	78
%	63.2%	26.7%	51.9%	69.1%	43.5%	56.1%
EU	1	3	2	3	6	15
%	5.3%	20.0%	7.4%	5.5%	26.1%	10.8%
OS	6	8	11	14	7	46
%	31.6%	53.3%	40.7%	25.5%	30.4%	33.1%

\* 2019/20 events have in part been affected by the ongoing pandemic which has led to cancellation or postponement of originally scheduled events for the year.







# PUBLIC EVENTS IN 2019/20

## Public Events in the academic year of 2019/2020

SEAC serves as a globally recognised hub for public debate and engagement on Southeast Asia in London. In 2019/20, the Centre continued to host various forms of events including research seminars (Southeast Asia Discussion Series), Early Career Researcher events, Research Masterclasses, Public Lectures and of course the Southeast Asia Forum. The last Public Lecture of this academic year was held online due to the ongoing pandemic but attracted more than 500 attendees from many different parts of the world. SEAC will continue to utilise the online platform to reach a wider audience in 2020/21.

South-South itineraries:  
alternative routes for mutual  
learning between Latin America  
and Southeast Asia

**1 October 2019**

**Speakers:** T n A varez (PhD Cand date  
Un vers ty Co ege ondon) May  
Ngo (Research e ow at the Or enta  
nst tute Czech Academy of Science)  
Audrey A ejandro (Ass stant Professor  
Department of Methodo ogy SE)  
Mara Nogue ra ( SE e ow n Human  
Geography Department of Geography  
and Env ronment)

**Chair:** Professor Hyun Bang Sh n  
( SE SEAC)

Southeast Asia Discussion  
Series: Land sharing  
experiences in Thailand and  
Cambodia: What lessons for  
land and housing policy for the  
urban poor?

**17 October 2019**

**Speakers:** Pau Rabé (Sen or and  
Expert nst tute for Hous ng & Urban  
Deve opment Stud es Erasmus  
Un vers ty Rotterdam) Anna Cant  
(Ass stant Professor Department of  
nternat ona H story SE)

**Chair:** Professor Hyun Bang Sh n  
( SE SEAC)

Southeast Asia Discussion  
Series: Social Media and Politics  
in Southeast Asia

**7 November 2019**

**Speaker:** Mer yna m (Assoc ate  
Professor and Canada Research Cha r  
n D g ta Med a and G oba Network  
Soc ety Car eton Un vers ty and Sen or  
V st ng e ow SEAC)

**Chair:** Professor Hyun Bang Sh n  
( SE SEAC)



Southeast Asia Discussion  
Series: Civil society elites and  
Cambodian civil society today

**21 November 2019**

**Speakers:** Astrid Norén Nilsson  
(Associate Senior Lecturer at the Centre  
for East and South East Asian Studies  
and University of Cambridge) Katherine Bricke  
(Professor of Human Geography Royal  
Holloway University of London and  
SEAC Associate)

**Chair:** Professor Hyun Bang Shinn  
(SE SEAC)



Public Lecture: Who is the  
Middle Class, and what are they  
up to? Reflections from Jakarta

**28 November 2019**

**Speaker:** AbdouMalq Simone  
(Senior Professor and Fellow Urban  
Institute University of Sheffield  
and Honorary Professor of Urban  
Studies University of Cape Town)

**Chair:** Professor Hyun Bang Shinn  
(SE SEAC)



Centring housing questions in  
(neoliberalising) Asian cities

**3 December 2019**

**Speakers:** Ying Chen (Associate  
Professor University of Wyoming)  
Ded Han (PhD Candidate Department  
of Geography and Environment SE)  
Richard Ronald (Professor of Housing  
Society and Space University of  
Amsterdam) Hoa Anh Tran (Associate  
Professor University of Missouri)

**Chair:** Professor Hyun Bang Shinn  
(SE SEAC)



SEAC Masterclass: Researching  
Digital Media

**25 November 2019**

**Speaker:** Meryna Lim (Associate  
Professor and Canada Research Chair  
in Digital Media and Global Network  
Society Carleton University)

**Chair:** Bingchun Meng (Associate  
Professor and Deputy Head Department  
of Media and Communications SE)



SEAC Masterclass: Research  
as part of democratization and  
urban transformation

**2 December 2019**

**Speaker:** Ying Chen (Associate  
Professor University of Wyoming)

**Chair:** Professor Hyun Bang Shinn  
(SE SEAC)



Southeast Asia Discussion  
Series: Enclave Urbanism  
and Transnational Zones in  
Southeast Asia

**28 January 2020**

**Speaker:** Jana M. Kiebert (Acting Head  
of Department and Institute for  
Research on Society and Space and  
Humboldt University of Berlin)

**Chair:** Professor Hyun Bang Shinn  
(SE SEAC)





Public Lecture: Less Poverty, More Precarity: Squaring the Circle of Southeast Asian Development

**30 January 2020**

**Speaker:** Jonathan Rogg (Chair in Human Geography at the School of Geographical Sciences, University of Bristol)

**Chair:** Professor Hyun Bang Shinn (SE SEAC)



Public Lecture: Diminishing Globalisation, Rising Digitalisation: Central Bank Policy Responses

**10 February 2020**

**Speaker:** Perry Warjyo (Governor Bank Indonesia)

**Chair:** Professor Hyun Bang Shinn (SE SEAC)

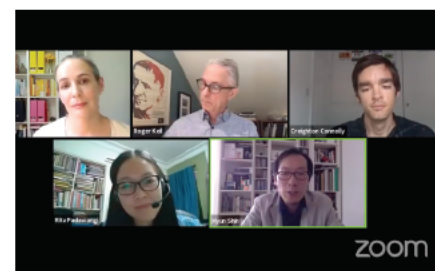


Public Online Event: Post COVID-19 Futures of the Urbanising World

**3 June 2020**

**Speakers:** Creighton Connoy (Senior Lecturer, University of Lincoln), Roger Ke (Professor, York University, Toronto), Deirdre McKay (Reader, Keele University), Rita Padawang (Senior Lecturer, Singapore University of Social Sciences)

**Chair:** Professor Hyun Bang Shinn (SE SEAC)



# LSE SOUTHEAST ASIA FORUM 2019

The fourth LSE Southeast Asia Forum, SEAC's annual flagship full-day conference, was held on Tuesday 29 October 2019 in the LSE's Shaw Library. The opening keynote lecture was delivered by H.E. Mr Pisanu Suvanajata (Ambassador of the Kingdom of Thailand to the United Kingdom). The panel discussions covered smart cities in Southeast Asia, the impact of the Belt and Road Initiative on infrastructure and politics in the region and electoral politics in Southeast Asia from a grassroots perspective. The podcasts for the talks are available publicly on the SEAF webpage: [lse.ac.uk/seac/seaf/seaf-19](http://lse.ac.uk/seac/seaf/seaf-19).

## LSE Director Opening Welcome Speech:

Dame Mounche Shafik (Director, The London School of Economics and Political Science)

## Opening Keynote:

H.E. Mr Pisanu Suvanajata (Ambassador of the Kingdom of Thailand to the United Kingdom)

*"Partnership and Sustainability for Thailand and ASEAN for the Future"*

## Keynote:

Prof Yee Kong (President, Singapore Management University)

*"Scaling smartness, (de)provincialising the city? The ASEAN Smart Cities Network and the predictable politics of technocratic regionalism"*

## Panel I – Smart Cities in Southeast Asia

**Chair:** Prof Hyun Bang Shinn (SE SEAC)

### Panellists:

Dr Suraya Sma (Khazhan Research Institute)

*"Smart urbanism and the common good"*

Esa Sutanudjaja (Rujak Center for Urban Studies)

*"Citizen Urbanism and Smart City: contestation or collaboration?"*

Renard Tepeke (AECOM)

*"Interpretations of smartness in tackling urban development challenges in Southeast Asia"*



## Panel II – Smart Cities in Southeast Asia

**Chair:** Prof. John S de ( SE SEAC)

**Panellists:**

Prof. Richard Griffiths (University of London)

*"The seas that bind us: ASEAN connectivity and China's BRI"*

Dr. Guanxi (Nanyang Technological University)

*"Is China buying up Southeast Asia? Investment, infrastructure, and development"*

Dr. Champa Pate (Chatham House)

*"Lessons from South Asia: Chinese outbound investment in Sri Lanka"*

### Keynote:

Prof. Nyma Pimentel-Sambu (University of the Philippines Manila)

*"Human rights as the foundation of good governance: The roles of the Philippine experience"*

## Panel III – Electoral politics in Southeast Asia from a grassroots perspective

**Chair:** Dr Catherine A. Arton ( SE SEAC)

**Panellists:**

sabe Dunstan (Chatham House)

*"How secure is the internet challenges democratic gains in Southeast Asia"*

Dr. Merlyna (Carleton University Canada)

*"Nationalism, religion and media for electoral politics in Southeast Asia"*

Dr. Maung Zarn (ORSEA)

*"The electoral politics of race/ethnicity, gender, class and faith in post-independence colonial states in Southeast Asia"*





# ASEAS UK CONFERENCE

SEAC and the Association of Southeast Asian Studies (UK) have agreed to jointly organise the Association's 50th anniversary conference, to be hosted at the LSE. This was originally scheduled for 4-6 September 2020, but has been postponed, subject to space availability, to 2021 due to the COVID-19 pandemic.

## Conference overview:

Today's Southeast Asia is an increasingly prosperous region. Technological innovation, education, new investments in infrastructure, countries in the region have much to celebrate. At the same time, significant sections of the region's population are experiencing ever more precarious lives. The challenges posed by the climate crisis, natural hazards, resource

appropriations, urbanisation, industrial expansion and political conflict can afford support only on those on the margins. What needs to be changed to create shared and sustainable prosperity?

ASEAS50@LSE is to explore this question across a series of interdisciplinary panels framed by keynote speeches from leading experts on the rapid transformation of Southeast Asia.



**ASEAS** (UK)  
ASSOCIATION OF SOUTHEAST ASIAN STUDIES



## NETWORK BUILDING

In addition to the public events programme, SEAC also provides opportunities for engaging with external scholars and officials to build relationships and explore potential collaboration in the 2019/20 Academic Year. SEAC welcomed Her Excellency Ms. Chhitha High Commissioner for the Republic of Singapore to the

United Kingdom of Great Britain and Northern Ireland to discuss SEAC and SEAC's work in Singapore and Prof. Ralf Emmers, Dean of S. Rajaratnam School of International Studies and President's Chartered International Relations Nanyang Technological University (Singapore) to discuss potential research collaborations.



# PUBLICATIONS AND MEDIA

In 2019/20 SEAC created a brand new one-stop resource for all our event podcasts and books, research articles and book chapters authored by Centre staff and Associates published since 2014. The webpage can be accessed here: [lse.ac.uk/seac/Publications-and-Media](https://lse.ac.uk/seac/Publications-and-Media)

In addition SEAC continues to publish blog articles both in the main SEAC Medium Blog ([medium.com/@lseaseac](https://medium.com/@lseaseac)) and the SEAC supported SEAC Research Method Lab ([blogs.lse.ac.uk/fieldresearch](https://blogs.lse.ac.uk/fieldresearch)). The blogs published in 2019/20 are

- **Smart Urbanism and the Common Good**

Dr Suraya Isma Director of Research, Khazanah Research Institute

- **Infectious disease in an urban society**

Prof Roger Keen, Faculty of Environmental Studies, York University Toronto

- **Managing COVID-19 on an increasingly urbanised planet**

Dr Creighton Connoy Senior Lecturer in Development Studies and the Global South, University of Lincoln

- **Is China buying up Southeast Asia?**

Investment infrastructure and development

Dr Guanxiang Research Fellow at the Nanyang Centre for Public Administration, Nanyang Technological University, Singapore

- **Human Rights as the Foundation of Good Governance: The Ironies of the Philippine Experience**

Prof Nyma Pimentel-Sambuán Professor and Vice Chancellor for Academic Affairs, University of the Philippines Manila and Executive Director of Philippines Human Rights Information Centre (PhilRights)

- **Ethnographic construction of a road: Notes on a nodal approach to a more-than-conventional field site**

Xinmin Zhou Researcher at Civic Exchange (Hong Kong)

- **Traversing the ethnographic route to meet disaster-affected populations: Ethical dilemmas during a monsoon fieldwork in Assam, India**

Mausum Chetia PhD researcher at the International Institute of Social Studies, Erasmus University Rotterdam (ISS EUR)

- **Four Challenges in Creative Collaboration and Non-Extraction: Notes from the Field amidst the Philippine Drug War**

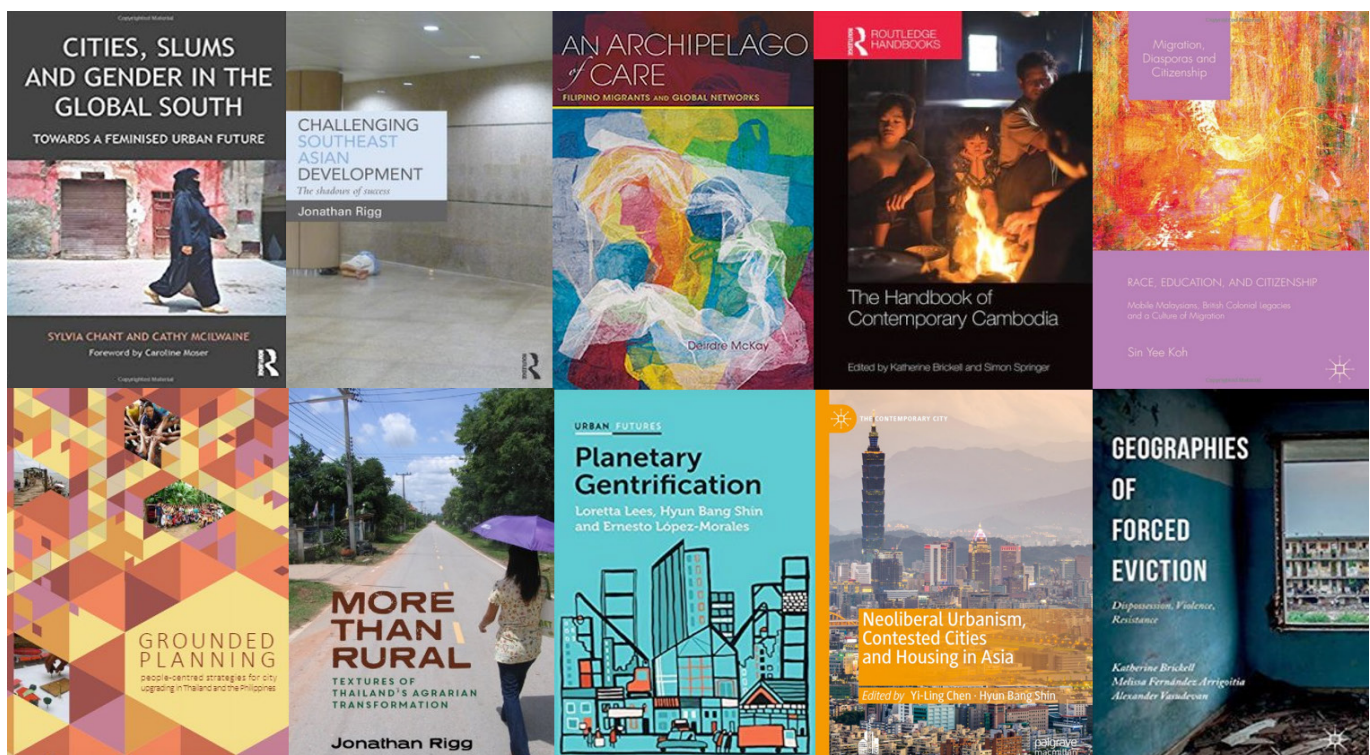
María Karla Abigail Pangnan Development Worker and Urban Planner; María Carmen Fernandez, Spatial Planner; Nastassja Quijano, Development Consultant; Immanuel Cedrik Forbes, Freelance Policy Consultant

- **Preparing for Research Abroad: Fieldwork Requirements in Rwanda**

Sangwon Park PhD candidate in International Development, University of Edinburgh; Célestin Shema, a Project Coordinator, Prison Fellowship Rwanda

- **In search of meaningful data**

Sujee Jung PhD Candidate at the Edward J. Bloustein School of Planning and Public Policy, Rutgers University



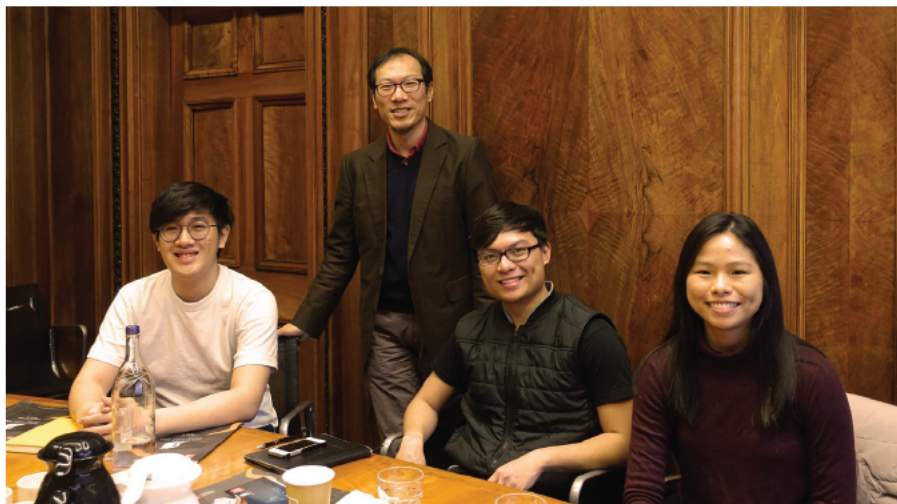


# STUDENT ENGAGEMENT

SEAC continues to engage and collaborate proactively with SE Students' Unions Societies related to Southeast Asia which are

- ASEAN Society
- Filipino Society
- Malaysia Club
- SingSoc (Singapore Society)
- Indonesian Society
- Thai Society
- Vietnamese Society

In addition to termly meetings to discuss ideas for collaboration and enhancing the profile of the Southeast Asian student community the Centre has promoted active continuous dialogue throughout the year and has set mutually beneficial expectations of information sharing, logistical and promotional support and attendance or contributions at each other's events. For instance the ASEAN Youth Summit 2020 hosted by SE and KINGS



College London students incorporated panel moderators with SEAC Director Professor Hyun Bang Shinn and SEAC Associate Dr Thomas Smith

The new SEAC Common Room has also been made available to SE Student Unions Southeast Asia societies to book for their own





# FOUNDING GIFT

"I am delighted to support the establishment of this Centre to enable LSE to consolidate and strengthen its education and research on the Southeast Asia region among students, researchers and faculty members. A deeper understanding of the 10 countries with diverse political and economic systems bonded together by ASEAN will engender lasting benefits to the School's academic community and graduates viewed in terms of the increasingly interdependent world economy and a further rise of Asia in the years ahead."

**Professor Saw Swee Hock**

**Professor Saw Swee Hock is an esteemed alumnus of LSE (PhD in Statistics, 1963) whose generous gift in July 2014 enabled the establishment of the LSE Saw Swee Hock Southeast Asia Centre.**

Professor Saw has held academic positions at the University of Malaya in Kuala Lumpur, the University of Hong Kong and the National University of Singapore (NUS). His publications centre on statistics, demography and economics, include some 49 authored/edited books, 31 book chapters and over 110 articles, with part of his research work devoted to the Southeast Asian region.

Professor Saw is well known for his philanthropic endeavours, particularly in the area of tertiary education. He has generously supported universities in Singapore, Hong Kong, China and England to advance higher education research and social mobility among

less privileged students. A loyal donor to SE, Professor Saw has supported scholarships through the Singapore SE Trust, the SE Asia Forums in Singapore and Beijing, the Library, the New Academic Building and the Saw Swee Hock Student Centre. His other alma mater, the NUS, has received the major share of his gifts, the largest towards the establishment of the NUS Saw Swee Hock School of Public Health.

Currently Professor Emeritus at SEAS, Yusof Ishak Institute, Professor Saw has received numerous accolades for his philanthropic and academic achievements. He was named Honorary Professor of Statistics at the University of Hong Kong

Honorary Professor at Xiamen University and President's Honorary Professor of Statistics at NUS. He was made an Honorary Fellow at SE and an Honorary University Fellow of the University of Hong Kong. Professor Saw was conferred the Outstanding Service Award by NUS, the Singapore President's Award for Philanthropy and the Public Service Medal (PBM) by the Singapore Government in the 2013 National Day Awards, and was named as one of the '48 Heroes of Philanthropy' in the Asia Pacific Region by Forbes Asia magazine in 2014. In 2015, he was conferred the Honorary Doctor of Letters by NUS and the Distinguished Alumni Leadership Award by SE.

SEAC expresses its heartfelt gratitude for Professor Saw's voluntary and unreserved support for the Centre.

If you like the work that SEAC is doing, please consider supporting us to help expand the impact of our activities.

<http://bit.ly/supportingseac>



## Scholarship and Research Gifts

SEAC continues to benefit from Mr Arvind Khattar's generous contributions to further the Centre's research activities. Following the 2015-2017 Khattar Scholarships for SE students from countries in the Southeast Asia Region.



# THE LONDON SCHOOL OF ECONOMICS AND POLITICAL SCIENCE

The London School of Economics and Political Science (LSE) is a world leading university, specialising in social sciences, with a global community of people and ideas that transform the world.

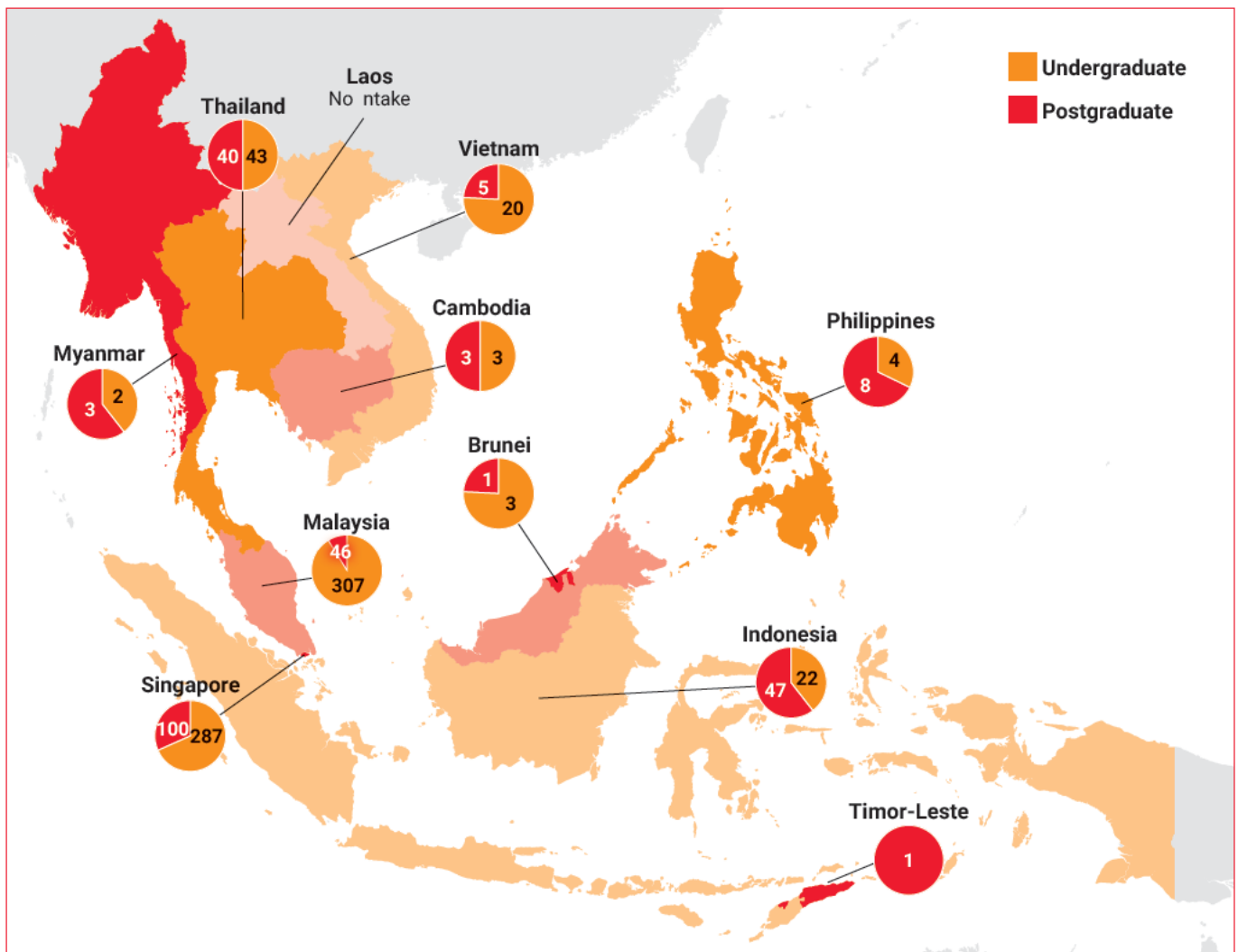
Founded in 1895, LSE's mission is to transform people and societies by understanding the causes of things. The School's research and teaching focuses on major global issues, including the economic threat of climate change, social and economic inequality across the world, economic growth and development,

risk in financial markets and structures, global health, and the future of our cities.

In addition to the cosmopolitan faculty and students who make it an international community rooted in London, LSE also has academic links to a number of high quality overseas universities.

The School has particularly strong ties to the National University of Singapore, Columbia University, Peking University, University of Cape Town, Yunnan University, UC Berkeley and Sciences Po, operating double degrees, student exchanges and summer school programmes.

## LSE students from Southeast Asia in 2019/20





THE LONDON SCHOOL  
OF ECONOMICS AND  
POLITICAL SCIENCE ■

**LSE Saw Swee Hock  
Southeast Asia Centre (SEAC)**

Houghton Street, London  
WC2A 2AE

Facebook: [facebook.com/LSESEAC/](https://facebook.com/LSESEAC/)  
Twitter: [twitter.com/LSESEAC](https://twitter.com/LSESEAC)  
Blog: [blogs.lse.ac.uk/SEAC](https://blogs.lse.ac.uk/SEAC)

**Contact**

[seac.admin@lse.ac.uk](mailto:seac.admin@lse.ac.uk)  
Tel: +44 (0)20 7955 6952  
[lse.ac.uk/seac](https://lse.ac.uk/seac)