



THE LONDON SCHOOL  
OF ECONOMICS AND  
POLITICAL SCIENCE ■

# Executive Global Master's in Management

A management programme like no other



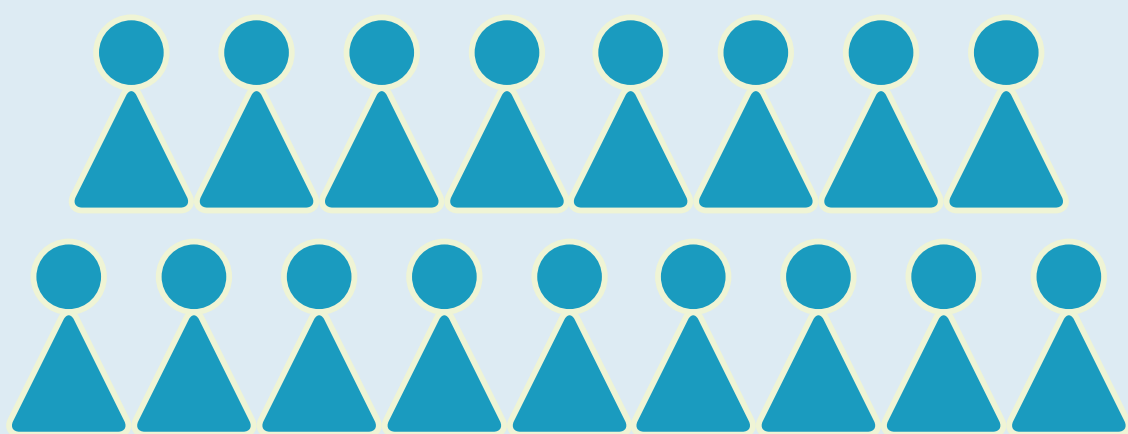


# LSE's Executive Global Master's in Management (EGMiM) programme

- Part-time master's designed for working professionals
- Only nine weeks out of the office over 17 months
- Taught over seven in-person modules at LSE's London campus and two international locations



## 2025/27 intake



17 students



10 nationalities across 5 continents

34

Average age



53% men, 47% women

## 2026 entry key dates

**Wednesday 8 October 2025**

Applications open

**Monday 24 August 2026**

Teaching on the programme starts



# The programme

## What is the EGMiM and who is it for?

The Executive Global Master's in Management (EGMiM) is a management programme like no other. It's more than just an Executive Master's, and redefines business education by tackling real-world complexity head on.

You'll deepen your understanding of the core principles of management and leadership, through our distinctive teaching approach and world-renowned faculty. With academic rigour and an international network, this is your next step towards elevating or advancing your career.

The flexible format – seven modules over 17 months requiring just nine weeks out of the office – is designed for working professionals. Delivered in short, intensive teaching blocks to fit your career, family, and personal commitments. You'll be able to learn on your terms, studying while you work and leading while you learn.



Read Yarissa's  
full profile.

## Why study EGMiM now?

We operate in an ever-changing business environment. Now more than ever before, broader political, economic, and geographic forces influence everything and effective leadership requires a deep understanding of context in our interconnected world. The LSE approach and the academic rigour underpinning this programme will provide you with the necessary insights and competitive advantage that sets you apart for success in the increasingly fast-paced and complex global business world.

"The EGMiM programme provides the ability to assess the social, political, and economic interplay on business interactions within our current complex world... I can attest that I have developed a nuanced manner of assessing business situations that drive innovation and creative problem-solving across my daily activities."

**Yarissa Matos-Soto, EGMiM 2020/22 graduate**



# Programme structure

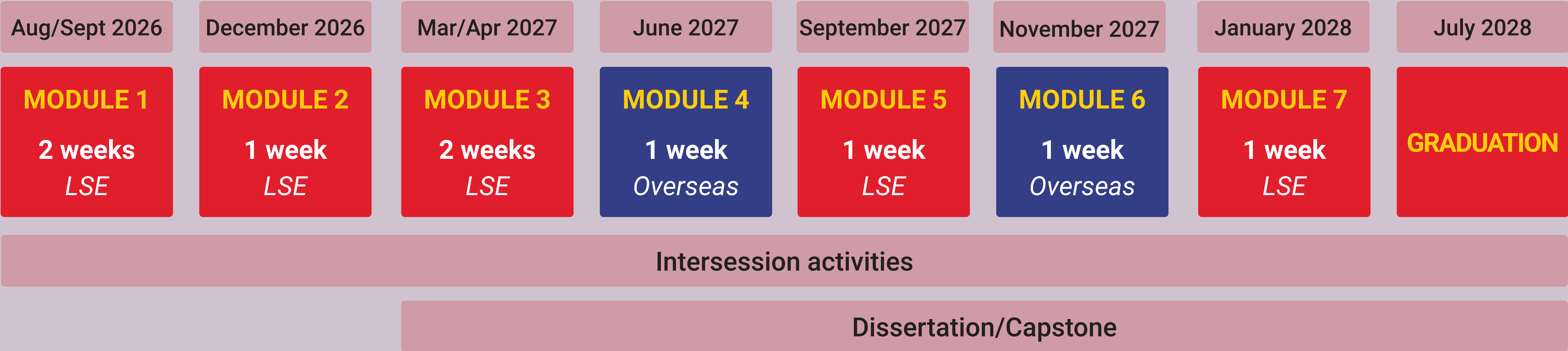


“I have a very demanding role, very long days at work, constant travel, so one of the most important things I needed to find in a master’s program was for it to be part-time and to allow me to do it while working full-time.”

**Germaine Aboud, EGMiM 2024/26 student**

[Watch our interview with Germaine](#)

## Programme overview August 2026 - July 2028





# Overseas modules

A unique feature of this programme is our two overseas modules. Previous trips have included Bangalore (India), Beijing (China), Istanbul (Turkey), Singapore and Cape Town (South Africa).

We choose destinations that tie in with key themes of the course. The trips are designed to complement each other to give a wide-ranging view of global business.

During each international module, you will:

- Experience classroom learning combined with company visits
- Be immersed in the local business culture, with visits to local and multinational companies, hearing from an eclectic mix of individuals and organisations in diverse sectors of the economy, to get a real understanding of the opportunities, challenges and issues faced in doing business in varying markets
- Attend talks from prominent international industry experts
- Hear from speakers from resident universities to gain insight into the local landscape
- Enjoy exclusive networking opportunities with LSE's local alumni chapters, broadening your connections and networks.

**[Our Programme Director, Dr Christine Côté, has written a blog about our international modules which you can read for more insights.](#)**



Read Hüseyin's  
full profile

"Although our main focus was to learn more about foreign direct investments in South Africa, this module came with a lot of side benefits highlighting a very comprehensive view of an emerging market and how multinationals find a place in it."

**Hüseyin Güntas, EGMiM 2022/2024**



# Meet the team

**Christine Côté**

*Programme Director, Executive Global Master's in Management*

I'm Christine, your Programme Director. As well as teaching, my role is to ensure the academic content and curriculum are relevant for educating global business leaders. I've been the PD for two years but have been involved in the programme since its inception in 2007.

**Becky Coggins**

*Head of Executive Programme Delivery*

I'm Becky, Head of Executive Programme Delivery. I've been with the programme since it began and am responsible for admissions and recruitment. My team oversee the delivery of the programme, and ensure you have all the support you need during your time at LSE.

**David Brown**

*Executive Programmes Manager*

I'm David, your Programme Manager. My team can help you with programme information and regulations, pastoral and mental health support and more. We'll also accompany you on the overseas modules and ensure you have an exceptional experience throughout your time on the programme.

**Zuzana Navratilova**

*Executive Programmes Administrator*

I'm Zuzana, your Programme Administrator. I will support you during all modules, provide course and assessment information, and ensure you have access to all the resources you need during your studies. You can get in touch with us whenever you need to.



# Benefits to your career and organisation

## Our programme delivers immediate and long-term impact:

- ✓ Tailored careers support from LSE teams and programmes
- ✓ Access to our Professionals at LSE network for career management, coaching and professional development support
- ✓ Customised leadership sessions focused on the needs of a tight-knit cohort
- ✓ Expand your network with access to LSE's global intellectual community and 200,000 alumni
- ✓ Opportunity for your organisation to contribute to your learning journey via your dissertation or capstone project
- ✓ Guest speakers from diverse industries that give you a global outlook on real-world business issues
- ✓ Company visits to bring your learning to life and illustrate management principles
- ✓ Access to the LSE Executive Master's network of likeminded working professionals
- ✓ Extracurricular workshops through the Executive Impact Series to help strengthen your business skills



# Admissions

## Minimum entry requirements for the programme:



An upper second-class honours (2:1) bachelor's degree, or international equivalent.



A minimum of **five years' full-time, relevant work experience**. The majority of students on the programme will have more than five years' experience.

You do not need to supply a GRE or GMAT score unless your previous academic experience does not give us enough information.

The English language requirement for this programme is Standard but can be waived in exceptional circumstances.

Book a consultation with Becky Coggins, Head of Executive Programme Delivery, who can assess your suitability for the programme and whether you meet the entry requirements.



"What I had not considered was the immediate increase in credibility that my investment in the programme would provide at work. Despite my lack of management experience, my dedication to transitioning into management was evident. Now working as a team lead and managing a team of six (going on seven) software engineers, I am finding that the benefits of the programme continue to positively impact my career."

**Sebastian Kazenbroot-Guppy, EGMiM 2023/25 graduate**

**Book a personal  
consultation**

[Read Sebastian's full profile](#)



# Scholarships and funding

We have several scholarship schemes available and offer support in exploring employer sponsorship.

## Hinrich Foundation Scholarship

*£21,000 (two scholarships available)*

The [Hinrich Foundation Scholarship](#) is designed to help talented individuals who are passionate about trade and have been admitted to the programme. The scholarship supports LSE's goal to attract qualified candidates from around the world regardless of their economic capabilities. There are two scholarships available for entry in each intake of the programme. The full criteria for this scholarship can be found on our [programme page](#).

## LSE-funded scholarships

We have four Management Leadership Scholarships available, covering at least 20% of the total tuition fees. These scholarships are awarded based on merit to those who have been admitted to the programme and have submitted a scholarship application by Monday 27 April 2026. The full criteria and application process can be found on our [dedicated funding webpage](#).

## Employer sponsorship and corporate discounts

If financial support from your organisation may be a possibility, why not download our [Employer Brochure](#)? This highlights the benefits of sponsorship to your company and will help your discussions. You can also access our [tips for writing a business case](#) for your employer. Corporate discounts on tuition fees are also available if your employer is sponsoring two or more attendees.



# Scholarships and funding



"At the Industrial Development Corporation of South Africa (IDC), we recognise that our people are the cornerstone of our mission to drive inclusive and sustainable industrial development. In a rapidly evolving global economy, the ability to respond to complex developmental challenges requires not only technical expertise but also strategic agility, global insight and leadership excellence. Our decision to support Aubrey's participation on the Executive Global MSc in Management (EGMiM) reflects our commitment to cultivating future-fit leaders."

**Industrial Development Corporation (IDC)  
on behalf of Aubrey Shabangu, EGMiM  
2025/27 student**





# Staff, student and alumni testimonials



Read Nery's full profile

"The curriculum, particularly the modules on strategic leadership and organisational change, equipped me with advanced analytical and decision-making skills that I've applied directly to my professional role. I've gained a robust understanding of how to navigate complex global markets and lead with greater confidence."

**Nery Gracia, EGMiM 2023/25 graduate**

## Check out more of our community in the following videos:



Meet Christine Côté, Programme Director of Executive Global Master's in Management (EGMiM)



Meet four EGMiM students from the 2024/26 cohort



Meet Josef Kutschi, EGMiM 2022/24 graduate



## LSE's EGMiM: A management programme like no other

When [Susan Allen Augustin](#) joined the [Executive Global Master's in Management \(EGMiM\)](#) programme at the London School of Economics (LSE) in 2013, she was living in New York and working at the [Open Society Foundations](#). She had always admired LSE and wanted to pursue a master's degree, but without hitting pause on her career. LSE's EGMiM programme offered the perfect solution.



The 2013/15 EGMiM cohort

### A life changing experience

The programme turned out to be more than just an academic pursuit – it became a turning point in both her professional and personal life. On the very first day, she met Tara Chandra, who later on became her co-founder at Here We Flo, a UK-based brand that creates eco-friendly period and sexual wellness products. They instantly connected, and by the second module, they were already discussing business ideas.

At the same time, her employer was beginning to explore diversity and inclusion initiatives. She took the opportunity to focus her dissertation on this emerging area, which not only deepened her expertise but also led to a new role leading diversity and inclusion strategies. This role

brought her to London and allowed her to scale a network-wide initiative – an opportunity she credits directly to the academic freedom and mentorship she received at LSE.

### Management tools that last a lifetime

Among the many courses Susan completed, Organisational Behaviour stood out as particularly influential. It laid the foundation for her pivot into diversity and inclusion and continues to shape how she builds and leads teams today. As a founder, she has applied these insights to create a strong, inclusive work culture – something that has become a cornerstone of her company's success.

She also found great value in the Marketing course, which emphasised strategic thinking and connected

marketing decisions to broader business goals. Another highlight was the Foreign Direct Investment course, which introduced her to new economic concepts and included a memorable trip to Istanbul that brought theory to life.

### Advice for future students

Susan's advice for anyone considering LSE's EGMiM programme is to be present and make the most of every moment. The 17 months may seem long at first, but with just a handful of courses, the time flies by. She also encourages taking time off work if possible, fully engaging with the content, and cherishing the relationships and experiences that the programme offers.

[Read the blog with Susan on our website.](#)



# Ready to take the next step?

**Click here to apply for 2026 entry**

## **Need advice regarding admissions requirements?**

Book a 1:1 session with our Head of Executive Programme Delivery.

## **Want to hear more from our students, faculty, and programme staff?**

Check out our prospective student events page for our upcoming online and in-person events.

## **Have another query?**

Email us at [dom.egmim.admissions@lse.ac.uk](mailto:dom.egmim.admissions@lse.ac.uk) and we'll get back to you or point you in the right direction.





Department of  
**Management**

[\*\*Click here to apply for 2026 entry\*\*](#)