



THE LONDON SCHOOL
OF ECONOMICS AND
POLITICAL SCIENCE ■

LSE Law School LLM Offer Holders Webinar July 2025





THE LONDON SCHOOL
OF ECONOMICS AND
POLITICAL SCIENCE ■

Introductions and Agenda

LLM Programme Director – Jo Murkens

- *Information about LSE Law and the LLM at LSE*

LLM Service Delivery Manager – Marisol Alarcon

- *Key dates for the LLM academic year*

Events and Student Communications Officer – Karla Barca Marrero

- *LLM community and social events*

LSE Graduate Admissions – Bryan Pilkington

- *Information on confirming your offer, CAS and Visas, and processing times*

Answering your questions





THE LONDON SCHOOL
OF ECONOMICS AND
POLITICAL SCIENCE ■

LSE Law School

- Century of excellence since 1919 - continuously evolving to meet tomorrow's legal challenges
- Top 5 globally ranked law school with unrivaled academic distinction
- Vibrant scholarly community at the heart of legal London
- Trailblazing interdisciplinary research at the intersection of law, economics, politics, and society
- Direct influence on landmark legislation and international legal frameworks
- Advisory roles to governments, multinational corporations, and global institutions
- Alumni network spanning 150+ countries in judiciary, government, and international organizations





THE LONDON SCHOOL
OF ECONOMICS AND
POLITICAL SCIENCE ■

LLM Experience

- World-renowned faculty including leading scholars, practitioners, and policy architects;
- Cutting-edge courses in emerging fields (AI & Law, Climate Justice, Global Financial Regulation)
- Seminar-based teaching; independent learning; co-curricular events;
- Diverse, motivated and international cohort; networking and social opportunities;
- Flexibility and specialisms on offer; cutting-edge content;
- LLM support: [LLM team](#); [Academic Mentors](#); [LSE Life](#); [Well-being](#); [alumni](#).





THE LONDON SCHOOL
OF ECONOMICS AND
POLITICAL SCIENCE ■

LLM Programme Structure

- The LLM programme is a **full-time 12 month programme**. The programme can also be taken on a part-time basis - 24 months part-time or 48 months extended part-time.
- **4 full units** programme. Most courses are 'half units' or 0.5 units, therefore you will likely be taking 8 half unit courses.
- One half unit (0.5 units) is the 10,000 word Dissertation (which is the mode of assessment for the **compulsory LL4F9 Legal Research and Writing**





THE LONDON SCHOOL
OF ECONOMICS AND
POLITICAL SCIENCE ■

LLM Specialisms

- You can choose to pursue your LLM with a general focus or select a subject Specialism
- 15 to choose from <https://www.lse.ac.uk/law/study/llm/programme-structure>.
- If you take a **minimum of four half unit courses within one of these specialist** areas, you can request that your chosen specialism is included on your final certificate upon graduation .
- Your Dissertation topic may be included as one of the four half unit courses to count towards qualifying for a Specialism .
- You will be invited to select your optional Specialism during Week 10 of Spring Term.



THE LONDON SCHOOL
OF ECONOMICS AND
POLITICAL SCIENCE ■

Key Dates for Autumn Term (Term 1)

Friday 19 September – LLM campus enrolment and introduction sessions

Monday 22 September – Welcome Week begins

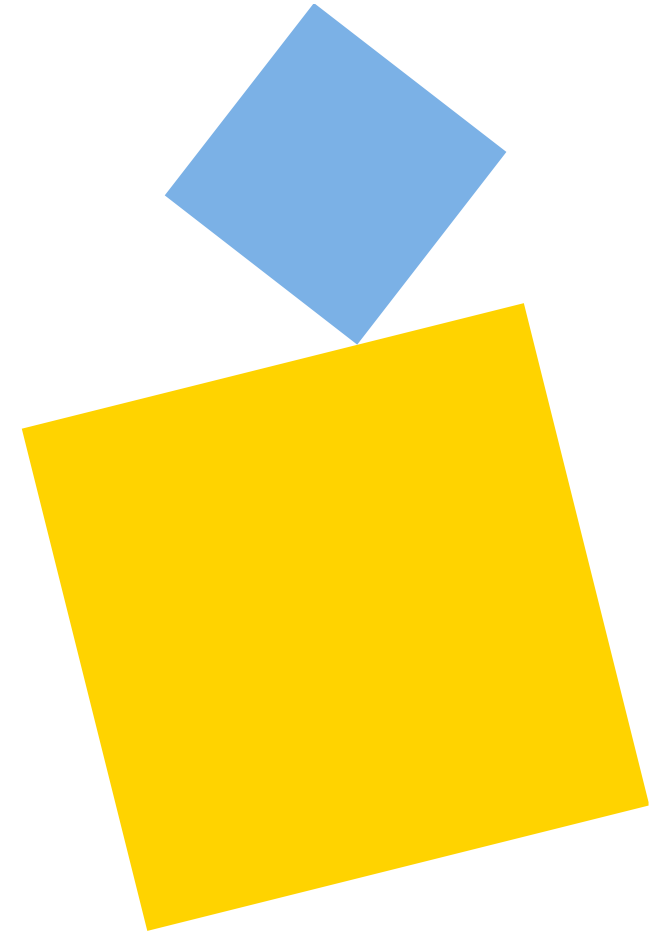
Thursday 25 September – Graduate Course Selection opens

Monday 29 September – Teaching begins (Week 1 Autumn Term)

Friday 10 October – Graduate Course Selection closes

3 November– 9 November – Reading Week (Week 6 – No teaching)

Friday 12 December – Last day of term





THE LONDON SCHOOL
OF ECONOMICS AND
POLITICAL SCIENCE ■

Key dates for Winter Term (Term 2) and beyond

Monday 19 January – Start of Winter Term

Monday 23 February – Friday 27 February – Reading Week (Week 6 – No teaching)

Thursday 2 April – Last day of Winter Term

Exam Period – Spring Term (Term 3)

Legal Research and Writing Skills dissertation (LL4F9) deadline – August 2026

Final results released – November 2026

Graduation – December 2026



THE LONDON SCHOOL
OF ECONOMICS AND
POLITICAL SCIENCE ■

Welcome Week: Friday 19 - Friday 26 September

Attendance for welcome week is essential and covers:

- Enrolment
- Welcome to the programme from the Dean of the Law School and the LLM Programme Director
- Academic sessions: Common Law, EU Law, Regulation and Public International Law.
- Course selection and Assessment information
- Careers and Library services information
- Activities to get to know your fellow LLM students, LSE and London
- Reception Welcome drinks



THE LONDON SCHOOL
OF ECONOMICS AND
POLITICAL SCIENCE ■

LSE Law Community

The Law School Common Room:

- A great space to study, relax and collaborate with your fellow classmates.
- Silent study area for individual study.
- Kitchen area with a fridge, microwave and hot water tap. Complimentary tea, coffee and milk available daily.
- Various events hosted here: career talks or academic sessions.

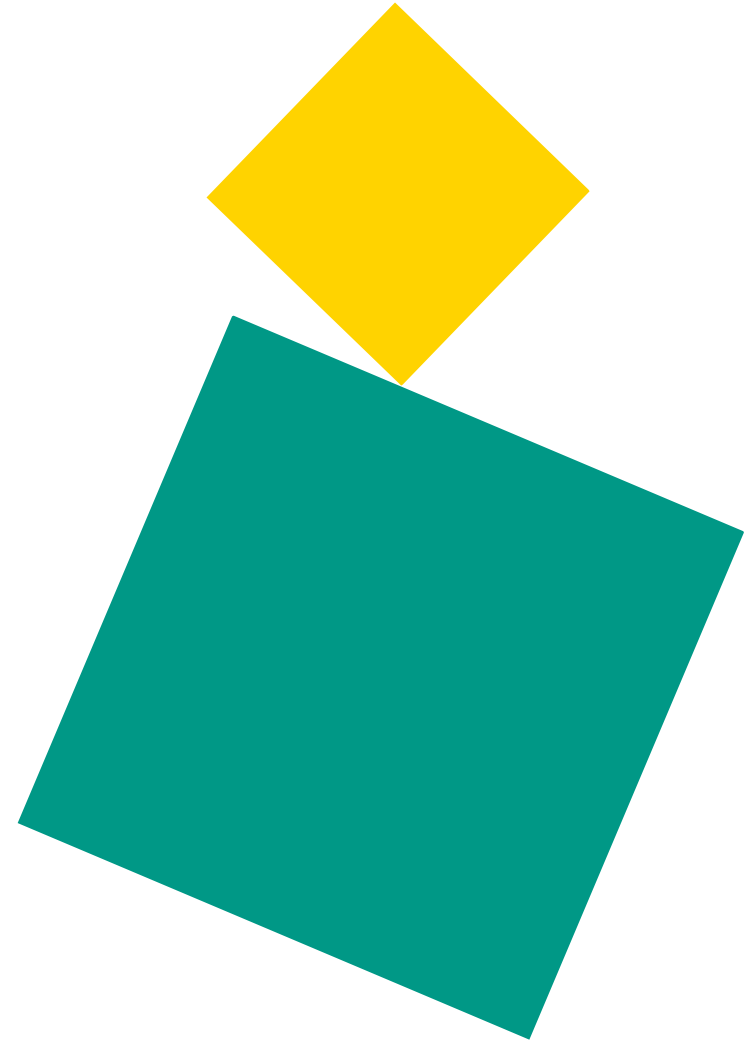




THE LONDON SCHOOL
OF ECONOMICS AND
POLITICAL SCIENCE ■

Co-curricular events - Convene

- 150 x LSE Law School events in 2025/26
- LLM co-curricular events: *cutting-edge topics*
- Convene events for Law School community
- Seminars
- LSE Law School public events, plus:
- LSE public events, podcasts, videos:
 - <https://www.lse.ac.uk/Events>
- Follow us on Instagram: @LSELaw





THE LONDON SCHOOL
OF ECONOMICS AND
POLITICAL SCIENCE ■

LLM Community & Events

22 - 26 October 2025 – Residential Weekend to Brighton

November 2025 – Dean's Lunch

December 2025 – Festive Social

January – Residential Weekend to Cumberland Lodge

February 2026 – Welcome Back Event

March 2026 – Residential Weekend to Cumberland Lodge

19 March 2026 – LLM Annual Dinner

June 2026 – End of Exams Party





THE LONDON SCHOOL
OF ECONOMICS AND
POLITICAL SCIENCE ■

LSE Graduate Admissions

Please make sure to:

- read your offer pack!
- add the domain @lse.ac.uk to your 'Safe Senders' or 'Never Block' list
- check your junk folder

It is essential that you ensure you can successfully receive our emails.





THE LONDON SCHOOL
OF ECONOMICS AND
POLITICAL SCIENCE ■

Confirming your offer - Graduate

Offer conditions:

Meeting the conditions of your offer

- No hard deadline on submitting evidence, though keep in mind that you won't receive your CAS until your offer is unconditional.
- If you will not have official confirmation of degree results before September (i.e. if you are graduating this year), we may be able to accept a temporary transcript with confirmation from your current university.

Sending official documents:

- electronic/ scanned copies via email **directly from your institution**
- via a secure portal such as Digitary
- IELTS: send us your TRF number
- TOEFL, GMAT, GRE: appointment number

Current processing times are published online: www.lse.ac.uk/study-at-lse/Graduate/News/Current-processing-times

Documents must be sent to: **graduate.documents@lse.ac.uk**



THE LONDON SCHOOL
OF ECONOMICS AND
POLITICAL SCIENCE ■

Visas and CAS

Issuing Confirmation of Acceptance of Studies (CAS)

- A CAS is necessary to complete a student visa application.
- To be eligible, you must:
 - have accepted our offer
 - have met the conditions of your offer
 - have submitted the Financial Undertaking Form
 - have provided us with any requested personal details (esp. passport details)
- You will receive your CAS by **email**. Checks on your documents take time once your offer is unconditional. We will ask you to confirm that all the details are correct.
- If your visa application is refused you will need a new CAS to re-apply. Take your time with your application and refer to all the guidance on our website!



THE LONDON SCHOOL
OF ECONOMICS AND
POLITICAL SCIENCE

Current processing times

lse.ac.uk/study-at-lse/graduate/news/current-processing-times



THE LONDON SCHOOL
OF ECONOMICS AND
POLITICAL SCIENCE

Search

Menu

< Study at LSE

Undergraduate

Graduate

Executive education

Study Abroad

Summer schools

Online certificate courses

International students

Meet, visit and discover LSE

Current processing times

This page shows the graduate admissions office processing times for incoming applications, emails and documents. It is updated at least once a day during the week.

Please bear in mind that around holiday closure dates, and application deadlines, our response and processing times may be slower.

Last updated: 22 May 2023, 06.16

We are currently processing applications received on:	19 May
We are currently processing supporting documents (including degree, TOEFL/IELTS/GRE/GMAT results, transcripts, references) received by email and our online How do I...? forms on: Please note , we are currently prioritising processing documents which fulfil the academic requirements of conditional offer holders for pre-session programmes and for those who register in late August and early September. If you already have an unconditional offer, but have sent us documents to fulfil any outstanding document requirements, we will get to your documents shortly, please do bear with us.	13 May
We are currently processing references to complete applications received by email on and including:	11 May
We are currently processing email enquiries received on and including:	04 May

Print or share



NEW Vlogs - get the inside scoop!

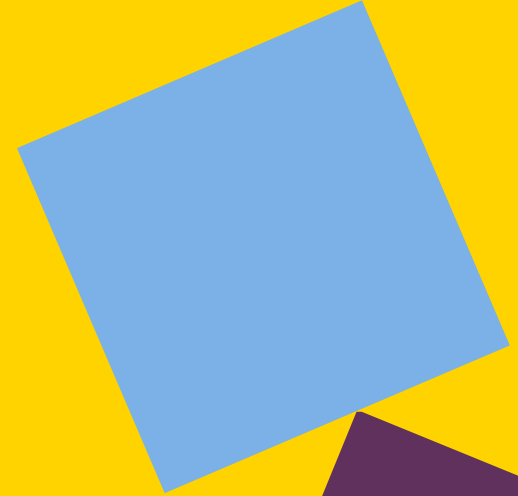


FAQs The Knowledge Base will provide you with answers, and allow you to email us



THE LONDON SCHOOL
OF ECONOMICS AND
POLITICAL SCIENCE ■

Your Questions





THE LONDON SCHOOL
OF ECONOMICS AND
POLITICAL SCIENCE ■

What do I do now?

Check page 4 of your [Graduate Offer Pack 2025](#) for checklist.

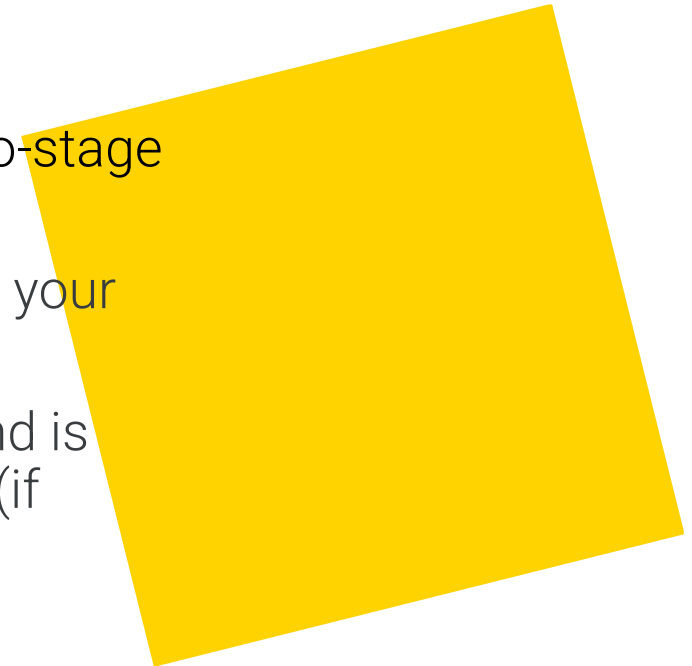
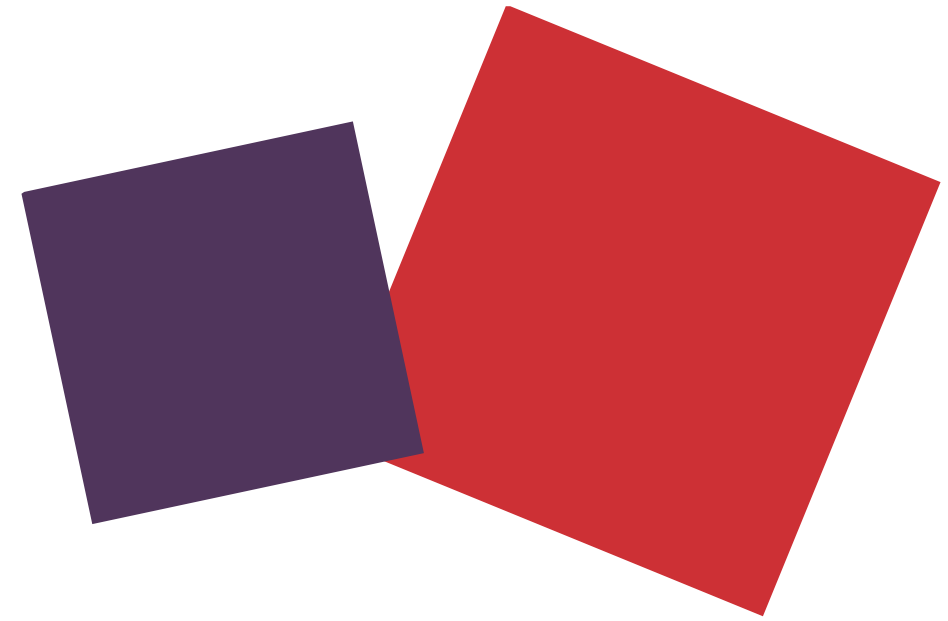
[Current processing times](#)

When do I enrol?

To become a fully enrolled student, you will be required to undertake a two-stage enrolment process: [online pre-enrolment and campus enrolment](#).

You will receive an email notification when it is time to pre-enrol online for your programme.

Campus enrolment takes place in-person on **Friday 19 September 2025** and is where we will check your official documents, including passport and visa (if applicable). Documents must be originals.





THE LONDON SCHOOL
OF ECONOMICS AND
POLITICAL SCIENCE ■

Do you recommend reading the course material prior to the start of term?

No this is not necessary. During the course selection period you will have an opportunity to attend all classes that you are interested before finalising your choices.

How can I find what courses are offered in the LLM?

You can check your programme structure here where you will see the optional specialisms and courses under each specialism

<https://www.lse.ac.uk/law/study/llm/programme-structure>





THE LONDON SCHOOL
OF ECONOMICS AND
POLITICAL SCIENCE ■

How can I find out about the course content?

You can view [LLM course videos](#) and look at the [LLM course guides](#). The course guides for 2025/6 will be published in August





THE LONDON SCHOOL
OF ECONOMICS AND
POLITICAL SCIENCE ■

If I want to prepare for the SQE examination, what kinds of courses should I select at LSE?

The SQE exams are not designed to follow on from any of the LLM courses, as unlike the LLM, the SQE focuses largely on some of the core subjects of English law taught at undergraduate level. You should therefore regard the preparation required for the SQE as a distinct exercise. We would therefore recommend that you pick your LLM courses to suit your academic and professional objectives, regardless of the SQE syllabus.



THE LONDON SCHOOL
OF ECONOMICS AND
POLITICAL SCIENCE ■

Thank you for coming!

Next steps:

- 19 August offer holder webinar: covering course selection and careers support
- 12 September pre-arrival webinar: everything you need to know before you join LSE and live Q&A
- Check upcoming offer holder newsletters for more information on key topics and the LLM offer holder webpage: <https://www.lse.ac.uk/law/study/llm/offer>
- Contact us with your questions:
 - law.llm@lse.ac.uk for course queries
 - Graduate Admissions for applications and visas:
<https://www.lse.ac.uk/study-at-lse/Graduate/Contact-Graduate-Admissions>
 - Send your documents to graduate.documents@lse.ac.uk