



THE LONDON SCHOOL
OF ECONOMICS AND
POLITICAL SCIENCE ■

LSE Law School LLM Offer Holders Webinar August 2025





THE LONDON SCHOOL
OF ECONOMICS AND
POLITICAL SCIENCE ■



Introductions and Agenda

LSE Careers Consultant – Doreen Thompson-Addo

What is the LSE Careers Service and how it can help you.

Answering your questions about the LSE Careers Service

Programme and Teaching Planning Officer – **Jeff Franklin**

The LSE Calendar, course selection process

Answering your questions about the LLM



THE LONDON SCHOOL
OF ECONOMICS AND
POLITICAL SCIENCE

LSE Careers

Doreen Thompson-Addo
Careers Consultant





THE LONDON SCHOOL
OF ECONOMICS AND
POLITICAL SCIENCE ■

What I'm going to cover

- What LSE careers offers you
- Events and workshops
- Where do LLM students work
- Before you start at LSE
- Further resources



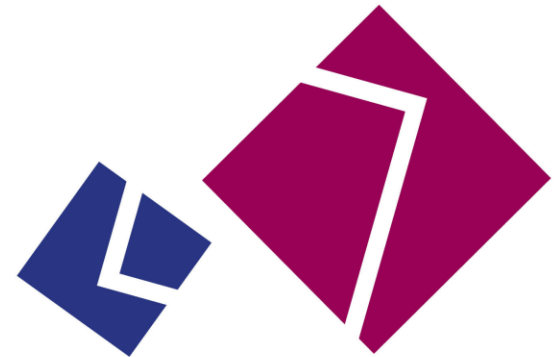
THE LONDON SCHOOL
OF ECONOMICS AND
POLITICAL SCIENCE ■

Where in the world are you joining us from?



Join at www.menti.com

use code 5565 8916



Where in the world are you joining us from?





THE LONDON SCHOOL
OF ECONOMICS AND
POLITICAL SCIENCE ■

LSE Careers – what we do

LSE Careers **supports students to develop their career.** From the early stages, when a student is working out what they want to do, right through to submitting applications and attending interviews.





THE LONDON SCHOOL
OF ECONOMICS AND
POLITICAL SCIENCE ■

The Career Development Cycle

Understand

- What do you really enjoy doing?
- What do you value in a career?
- Find out how to achieve your goals

Experience

- Work experience
- Volunteer
- Get involved in running a society

Explore

- Chat with alumni about their jobs
- Network on LinkedIn
- Coffee chats

Implement

- Get feedback on your CV
- Take a practice interview
- Practice online psychometric tests





THE LONDON SCHOOL
OF ECONOMICS AND
POLITICAL SCIENCE ■

1:1 careers appointments

- Career guidance and advice
- CV, cover letter, applications
- Practice interviews
- Disabled, race equity, LGBTQ+, women and social mobility



LSE Careers: Our Offer

Careers events

- Careers fairs
- Alumni panels and networking
- Skills seminars
- Mock assessment centres
- Employer presentations
- Sector and region-specific programmes
- EDI focused events and support

Opportunities

- Work-based learning
- Jobs, internships and volunteer vacancies board
- Part-time work support
- Employer recruitment and networking events

Resources

- Website resources including employment sector pages
- Online tools
- LSE Careers blog and Moodle
- Social media content
- Careers email newsletter

lse.ac.uk/careers



THE LONDON SCHOOL
OF ECONOMICS AND
POLITICAL SCIENCE ■

CareerHub

On CareerHub, you can:

- Access a jobs board featuring part-time, graduate and internship opportunities (at peak time, more than 1,000 vacancies)
- Browse and book onto events
- Book a careers appointment or practice interview



Visit careers.lse.ac.uk

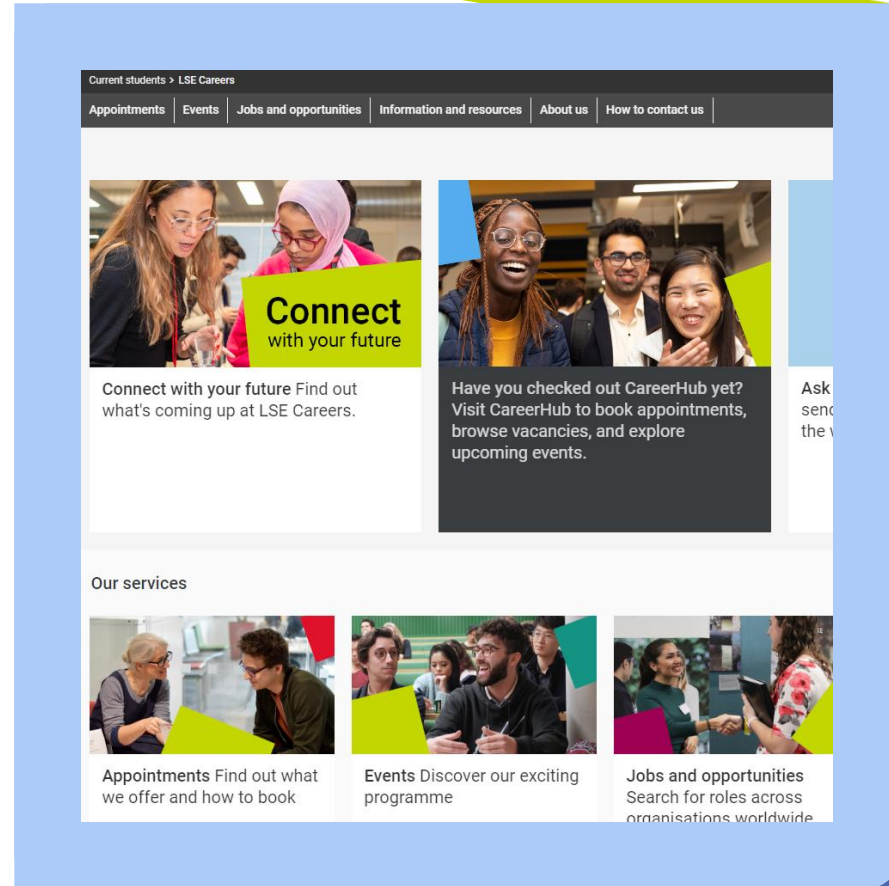


THE LONDON SCHOOL
OF ECONOMICS AND
POLITICAL SCIENCE

LSE Careers website

On our website, you can:

- Browse advice to help you navigate your career journey and next steps
- Access resources to support you with the application process
- Explore information about employment sectors and researching your options



Visit lse.ac.uk/careers



THE LONDON SCHOOL
OF ECONOMICS AND
POLITICAL SCIENCE ■

What's in store for you?

Legal focus

- Discover Law and Legal Services
- LLM alumni networking evening
- Legal Case study sessions
- How to market your LLM
- Considering a PhD in Law?

Other events

- Applications day
- International organisations day
- Careers in India / Brussels / USA





THE LONDON SCHOOL
OF ECONOMICS AND
POLITICAL SCIENCE ■

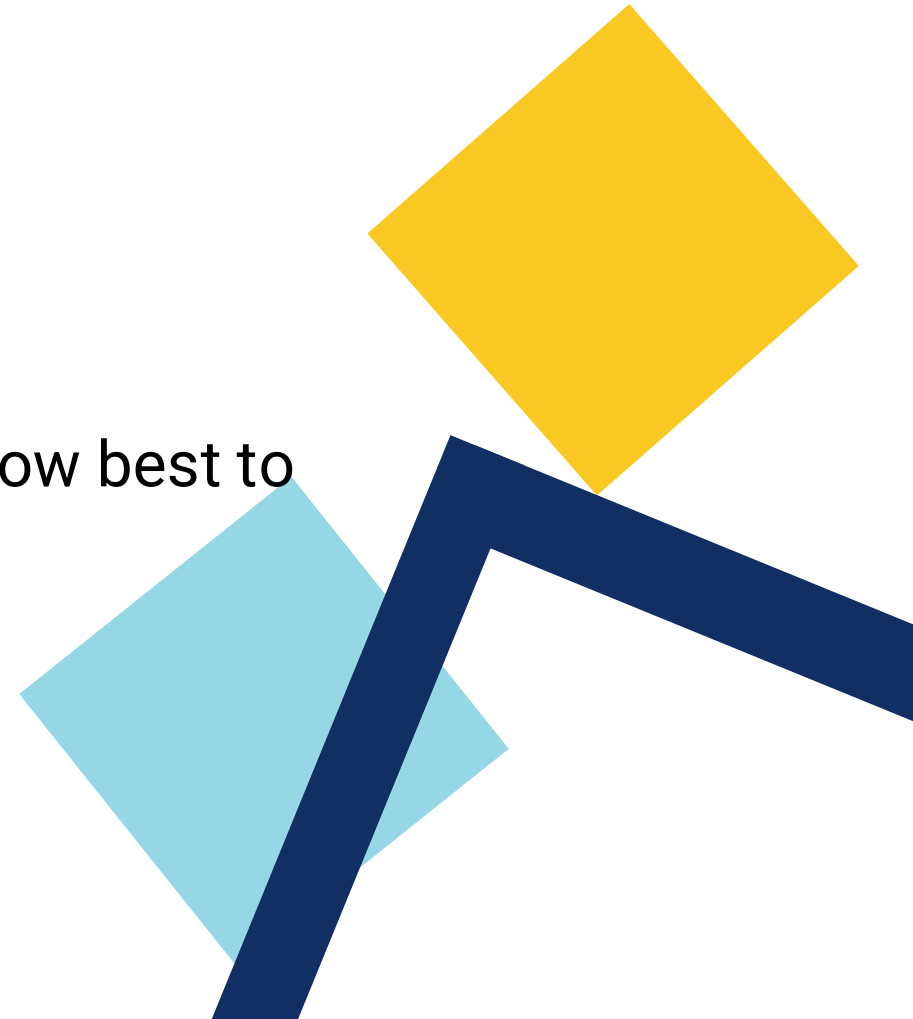
Law School Careers offering

Roughly 3 sessions a week run by the Law School covering:

- The routes to qualification as a solicitor or barrister in the UK
- A weekly panel of UK lawyers from variety of practice areas
- Skills sessions to improve your chances (eg commercial writing, negotiation, case studies, presentation practice)
- Each element of the application process

Law School Careers offering

- General career drop-in sessions 2x pw
- Commercial awareness weekly discussions
- Presentations for Indian and Chinese students on how best to use their LLM in their home countries





THE LONDON SCHOOL
OF ECONOMICS AND
POLITICAL SCIENCE ■

After graduation.....

97% of surveyed LLM graduates
entered highly skilled employment



Where do LLM graduates work?

SECTORS

- Law and legal services
- Government, public sector and policy
- Financial and professional services
- Environment and energy
- Teaching and research
- International organisations
- Information, digital, technology and data

PROFESSIONS

- Trainee Solicitor
- Associate
- Paralegal
- Research Associate
- Consultant
- Analyst
- Government Adviser

COMPANIES

- Latham and Watkins
- Bank of England
- EY
- European Commission
- Financial Conduct Authority
- Refugee Council
- University of Oxford
- White & Case



THE LONDON SCHOOL
OF ECONOMICS AND
POLITICAL SCIENCE ■

Getting prepared – digital tools

Get your
CV/cover
letter
checked
with
[CareerSet](#)

CareerSet

Practise
interviews
with
[Shortlist.me](#)

Shortlist
Me

Support for
international students
with
[Student
Circus](#)

STUDENT
CIRCUS

Practise
psychometric
tests with
[Graduates
First](#)

GF Job Assessment
Experts

Prepare for
case
interviews
with
[CaseCoach](#)

CASECOACH

Get
answers to
your
question
using [Ask
an Alum](#)

Ask an
Alum

Browse all online tools: bit.ly/lse-careers-online-tools

lse.ac.uk/careers



THE LONDON SCHOOL
OF ECONOMICS AND
POLITICAL SCIENCE ■

Helpful resources

Work experience:

<https://www.prospects.ac.uk/jobs-and-work-experience/job-sectors/law-sector/law-work-experience>

Finding part time work:

<https://info.lse.ac.uk/current-students/careers/information-and-resources/internships-and-work-experience/part-time-work>

How to become a solicitor:

<https://www.sra.org.uk/become-solicitor/sqe/>

How to become a barrister:

<https://www.barstandardsboard.org.uk/training-qualification/becoming-a-barrister.html>

Working in England & Wales as an international lawyer:

<https://www.lawsociety.org.uk/career-advice/becoming-a-solicitor/qualifying-from-abroad-to-work-in-england-and-wales>



lse.ac.uk/careers



THE LONDON SCHOOL
OF ECONOMICS AND
POLITICAL SCIENCE ■

Follow us @LSECareers



lse.ac.uk/careers



Podcast: 'Steer your Career'





THE LONDON SCHOOL
OF ECONOMICS AND
POLITICAL SCIENCE

see you soon!
Questions





THE LONDON SCHOOL
OF ECONOMICS AND
POLITICAL SCIENCE ■

Is it possible to combine work in a big law firm and studies?

Does LSE Law School / LSESU Law Society also offer events and guidance for a career in public policy or is it strictly limited to law?

Can Careers Service help us with our applications to law firms? How much support is given to training contract applications?

Do you offer any networking events?



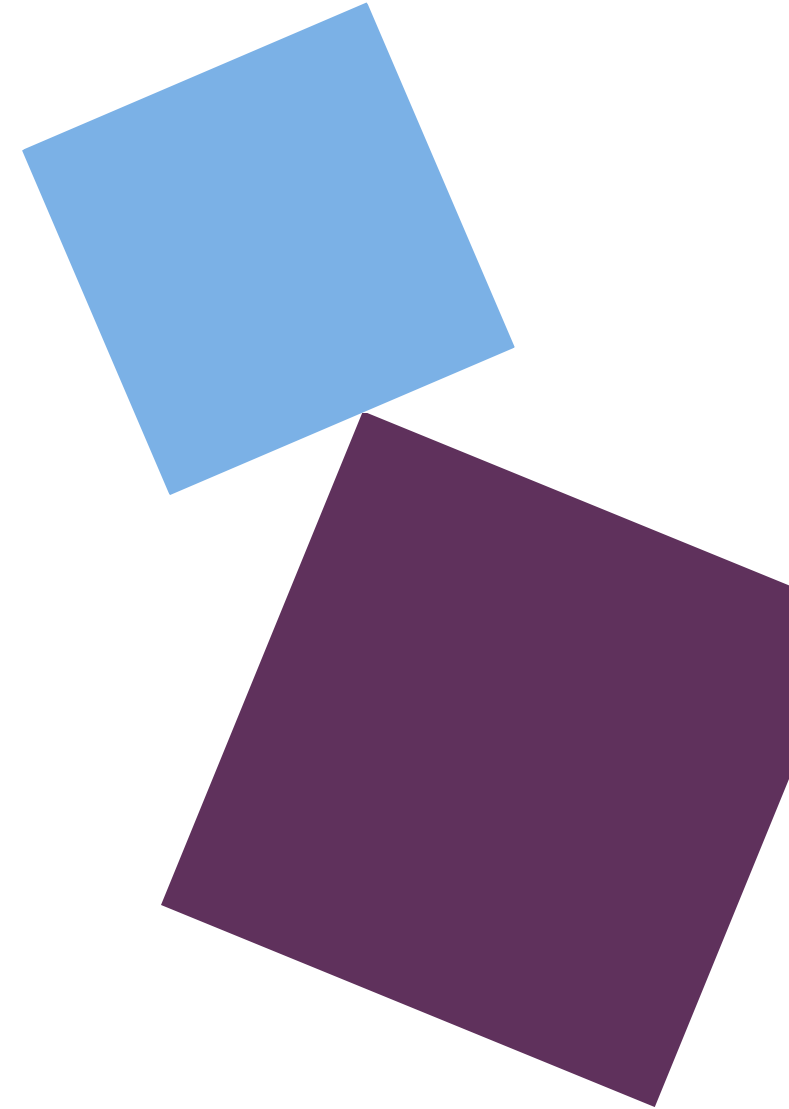


THE LONDON SCHOOL
OF ECONOMICS AND
POLITICAL SCIENCE ■

As an international student, I am hoping to do some part time work to supplement my income during my course of study. Does LSE provide any opportunities for Graduate Students to work part time and, if so, what sort of opportunities can I expect?

What kind of queries can I discuss in a careers appointment?

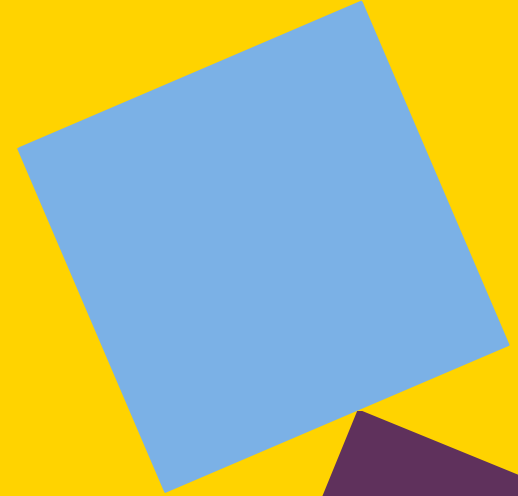
What do employers, particularly law firms, look for in an application?





THE LONDON SCHOOL
OF ECONOMICS AND
POLITICAL SCIENCE ■

Course selection





THE LONDON SCHOOL
OF ECONOMICS AND
POLITICAL SCIENCE ■

The LSE Calendar

- The Calendar is published on the LSE website for use by LSE staff and students. Its purpose is to gather together into a single resource regulations relating to students and their study.
- The Calendar is a web-first resource - <https://www.lse.ac.uk/resources/calendar/>
- The Calendar for 2025/26 academic year will be online from 28 August. This includes course guides.



Calendar: Programme Regulations, Course Guides, School and Academic Regulations

[Page contents](#) > [Current academic session](#) | [Next academic session](#) | [Previous academic sessions](#)

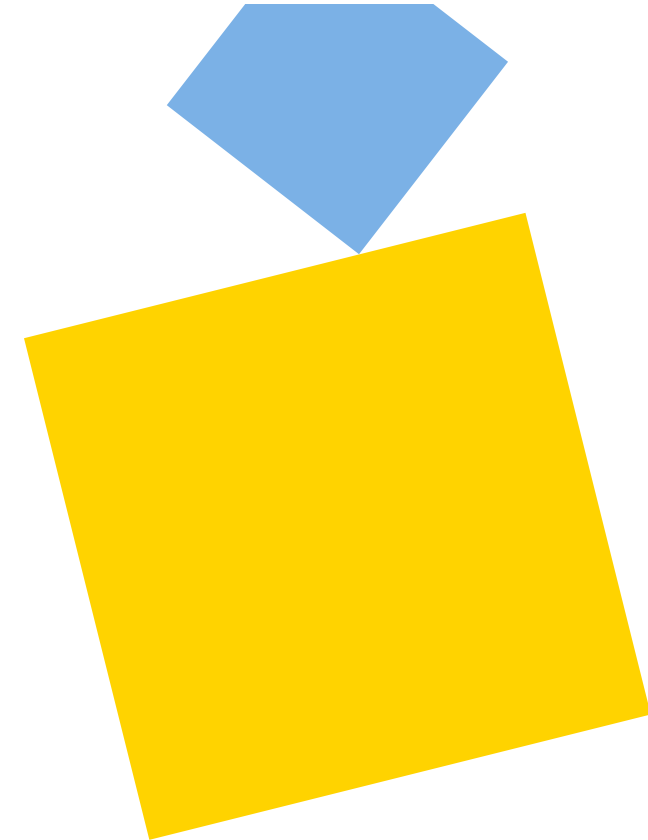
A single resource for regulations relating to students and their study

For the 2021/2022 academic session

The Calendar is published on the LSE website for use by LSE staff and students. Its purpose is to gather together into a single resource regulations relating to students and their study.

The Calendar is a web-first resource. A limited number of print versions of the School and Academic Regulations have been generated from this online version for use by LSE staff for administrative purposes. The online version of the Calendar, which will be adjusted from time to time throughout the year, is the definitive version: in the case of differences between versions, or differences between the Calendar and other sources across the School where the information has been replicated, the online Calendar version should be considered authoritative.

[Disclaimer](#)





THE LONDON SCHOOL
OF ECONOMICS AND
POLITICAL SCIENCE ■

The LLM Structure

- **4 full units** programme. Most courses are 'half units' or 0.5 units, therefore you will likely be taking 8 half unit courses.
- One half unit (0.5 units) is the 10,000 word Dissertation (which is the mode of assessment for the compulsory LL4F9 Legal Research and Writing course)
- Graduate Course Selection – You will be able to select courses from 10 a.m. BST on **Thursday 25 September** until 5pm on Friday 11 October 2024.
- Start attending classes from **Monday 29 September** (Week 1 of Autumn Term)

Terminology:

- Course = module or unit
- Terms - Autumn Term (Term 1), Winter Term (Term 2), Spring Term (Term 3).





THE LONDON SCHOOL
OF ECONOMICS AND
POLITICAL SCIENCE ■

Graduate Course Selection

- Browse online course guides (available soon)
- Watch course videos: <https://www.lse.ac.uk/law/study/llm/video>
- Read the LSE course selection guidance: <https://info.lse.ac.uk/current-students/services/assets/documents/PG-Student-Guide.pdf>
- Familiarise yourself with the LLM programme regulations: <https://www.lse.ac.uk/resources/calendar2024-2025/programmeRegulations/taughtMasters/2024/LLMFull-time.htm>
- More guidance is listed in the LLM Student Handbook (2025/26 version will be online soon)



THE LONDON SCHOOL
OF ECONOMICS AND
POLITICAL SCIENCE ■

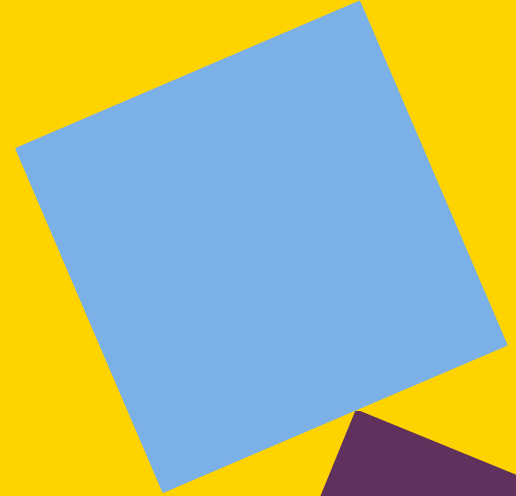
Graduate Course Selection

- Choose seven half units (or equivalent) for both Autumn and Winter terms
- Automatically enrolled onto compulsory course (LL4F9)
- Self-select your seminar group once you've accepted a course (if required)
- All courses are capped
- Up to two half units/one full unit can be taken outside the Law School
- You must choose a minimum of four half units/two full units which are assessed by exam
- All LLM courses are assessed by exam (except LL4F9 dissertation course)
- Think about the courses you need if you wish to have a specialism
- Have a balanced course load over both terms
- Keep an open mind when choosing courses



THE LONDON SCHOOL
OF ECONOMICS AND
POLITICAL SCIENCE ■

Your Questions





THE LONDON SCHOOL
OF ECONOMICS AND
POLITICAL SCIENCE ■

Taking courses in other departments

Can I take courses outside of the Law Stream? Are there any restrictions on the type of courses we can take?

Yes, you can get further information regarding the course selection process here - <https://info.lse.ac.uk/current-students/services/assets/documents/PG-Student-Guide.pdf>

What is the process for applying to courses from other departments?

Contact the relevant LSE department or school that the course is assigned to.



THE LONDON SCHOOL
OF ECONOMICS AND
POLITICAL SCIENCE ■

Timetabling and courses

What happens if there is a clash for two courses I want to take? How can I study both? Will there be any change to the timetable?

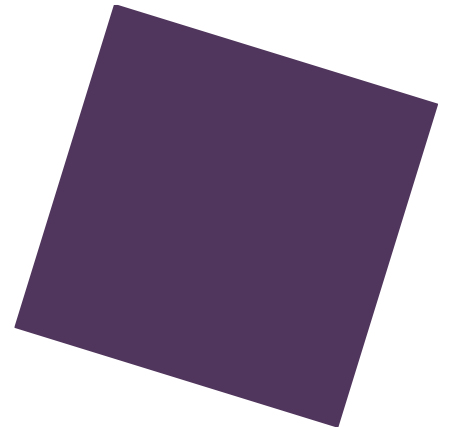
Course clashes are not permitted. Therefore, you will have to make another course selection.

Do we find out timetabling for lectures and seminars when selecting courses?

Resource: <https://info.lse.ac.uk/current-students/timetables>

As for the compulsory course "Legal Research and Writing Skills", is it offered both in autumn and winter terms (or just during the winter term)?

Lectures begin with an introductory session in the Autumn term and continue through the Winter term.





THE LONDON SCHOOL
OF ECONOMICS AND
POLITICAL SCIENCE ■

Course selection and Specialisms

Can you pick specific courses from other specialisms for example tax but you are on a financial law and regulation specialism?

Yes, you are welcome to choose courses from other specialisms.

At what point should we inform the LLM team that we are taking a Specialised/General LLM? Or is it automatically decided based on the selected courses?

All students will receive a Specialism Request form during the Winter term.

Is there a good chance I can take the required courses to get a specialisation?

Yes, Our specialisms offer a range of courses designed to support you in gaining expertise in your chosen area.



THE LONDON SCHOOL
OF ECONOMICS AND
POLITICAL SCIENCE ■

Course selection process

Is there any approach for students on the general LLM programme choosing their modules?

Students are encouraged to review course guides and watch course videos ahead of the course selection period.

Do we have the opportunity to shop around/ browse through several modules? And if so- how much time do we have before we can finally decide which modules we would like to opt for?

The course selection system is open for two weeks and students can change their courses during that time.

Would you recommend to take more courses in AT or WT? Is there a minimum/maximum of courses that have a final exam/essay that can be taken? (i.e. can I take 7 courses that are assessed through an essay?) Is there a balance that is recommended?

We advise students to take a balanced course load over the AT and WT. A maximum of 4 courses per term.

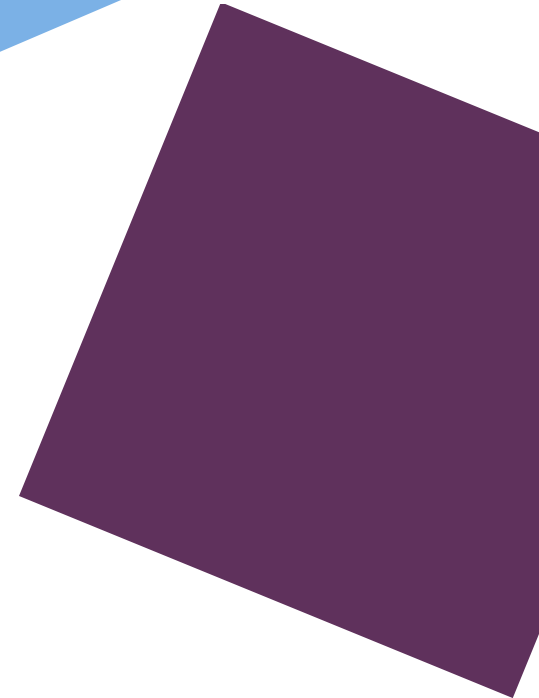
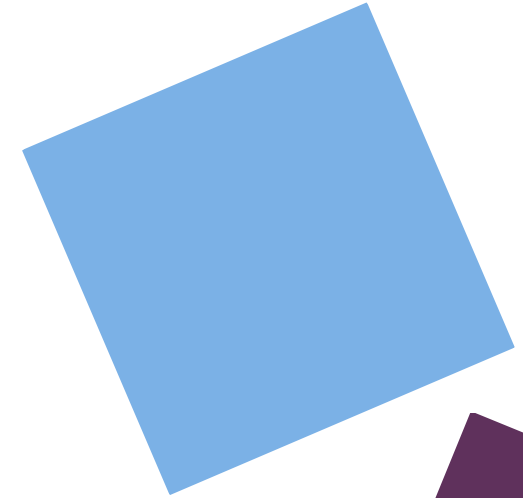
A large, solid red shape that tapers from left to right, located at the bottom of the slide.



THE LONDON SCHOOL
OF ECONOMICS AND
POLITICAL SCIENCE ■

Resources:

- LLM webpages: <https://www.lse.ac.uk/law/study/llm>
- Offer holder newsletters and webpages: <https://www.lse.ac.uk/law/study/llm/offer>
- Our last offer holder webinar covered the programme, specialisms, key dates, and application tips. The slides are now available online.
- Welcome information: <https://welcome.lse.ac.uk/>
- Email us at law.llm@lse.ac.uk





THE LONDON SCHOOL
OF ECONOMICS AND
POLITICAL SCIENCE ■

Thank you for coming!

Next steps:

- Friday 12 September 2.30pm GMT pre-arrival webinar: everything you need to know before you join LSE and live Q&A
- Check upcoming offer holder newsletters for more information on key topics
- Check the offer holder webpages for updated information on Welcome Week and the FAQs section
- Contact us with your questions:
 - law.llm@lse.ac.uk for course queries

