



LSE MARYAM FORUM CONFERENCE 2020

Building Transformational
Leadership for an Uncertain Future

One Year On:
Lessons Learnt and 'New
Normals' in a Post-COVID World
8th, 9th & 10th December 2020

LSE

THE LONDON SCHOOL
OF ECONOMICS AND
POLITICAL SCIENCE ■

Dear participant

A warm “virtual” welcome to the Annual Conference of the Maryam Forum of the London School of Economics and Political Science.

As the year 2020 nears its end, the COVID crisis is reaching an eagerly-awaited — yet precarious — point. The vaccine has arrived and the end of the global twin health and economic crises is finally in sight. Yet what we do today, the policy road we follow and the ‘new normal’ we build will determine how many lives we can still save and how fast our economies can recover. It will also determine how resilient and sustainable our societies will be should another catastrophe on a global scale hit, be it a pandemic or a climate shock.

The crisis is not yet over. But we can now draw on accumulating evidence of what works and what does not.

A key lesson is that leadership matters more than ever, and not only in government but in business and civil society as well. Another lesson, which we ought to have learned long ago, is that science and evidence matter. And the young generation, whose economic and labour market prospects have been particularly hard hit by the pandemic, is eager to have its voice heard, particularly in areas where today’s policy decisions will affect their future.

Inclusive leadership informed by science is what we need in order to be able to tackle the big challenges ahead of us.

This is the context for the Maryam Forum, a new initiative that the London School of Economics and Political Science launched in 2020.

We have created a unique ecosystem where renowned academics, policymakers, business leaders and LSE students work together on the biggest challenges of our time: global emergencies and responses; innovation and inclusive growth, rethinking finance and the global financial architecture; climate and the oceans, human mobility; and democracy and disinformation.

At our Annual Conference on 8th, 9th and 10th December we are welcoming global opinion-makers — including leaders from the G7 and G20, influential academics and innovative business people. We will present the findings of all the background Co-Labs and will issue a public letter – our “Call to Action” – addressed to G7, G20 and national leaders containing our research-informed policy recommendations.

We look forward to your participation at the conference - and hope that you will join our Maryam Forum platform at the LSE.

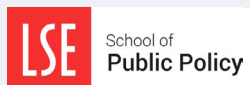
Piroska Nagy-Mohácsi,
Interim Director, Institute of Global Affairs
at the School of Public Policy, LSE

Andrés Velasco
Dean, School of Public Policy, LSE

Erik Berglof
Chief Economist, Asian Infrastructure
Investment Bank and LSE

Khalid Janahi
Chairman, Vision 3

Academic Partners:



The LSE School of Public Policy was founded in August 2018 with Professor Andrés Velasco appointed as its inaugural Dean. The LSE School of Public Policy is an international community where ideas and practice meet. Our approach creates professionals with the ability to analyse, understand and resolve the challenges of contemporary governance.

The history of public policy and public service has been at the heart of LSE since its inception. LSE was founded in 1895 “to understand the causes of things” and “for the betterment of society”. The original prospectus, from 1895, calls for “a further provision for systematic training in economic and political science, and the promotion of original investigation and research”. About 125 years later, there could be no better

way to describe the mission of the School of Public Policy and strengths of our curriculums.

Our education focuses on rigorous and empirical skills and tools that underpin evidence-based policymaking. We combine this with an application of these skills to real-world problems and contexts. We are inclusive and supportive of our diverse student community, open to all enquiring minds.

We offer three postgraduate degrees in public policy and public administration. Each of our degrees are tailored to a different stage of your policy career, but they all put the same emphasis on a strong foundation in economics, political science and quantitative methods.

Our entry-level degree is the two-year Master of Public Administration (MPA). Applicants usually have one year of relevant professional experience, though some have more. Key skills are taught in-depth through the first year, while in the second year students can choose a specialism for their MPA. All students take part in a Capstone project,

working with on a real-world policy challenge with an external client.

For students with three or more years of professional experience, we offer a 9-month Master of Public Policy (MPP). The MPP is a rounded policy degree, including Public Management and Philosophy alongside economics, political science and quantitative methods. The degree allows students to take a career break and quickly return to the workplace equipped to take on new challenges.

Our most experienced students choose the Executive MPA, which is taught over 19 months. This degree runs in a modular format, with students attending teaching for 8 intensive week-long or weekend blocks. This format allows students to remain in their jobs and combine work with study. Students have at least five years of post-degree professional experience and often substantially more, creating a network of contacts to drive career progress at the senior levels.



The Institute of Global Affairs (IGA) at the LSE School of Public Policy was established in 2015 with a mandate to maximise the impact of LSE’s world leading expertise across social sciences by shaping locally-rooted responses to the most important and pressing global challenges. IGA has a global reach and a multi-disciplinary approach, encouraging fertilisation across regions

and disciplines. With a focus on research-based policy-making, IGA aspires to promote deeper understanding and peer-to-peer transfer of knowledge across emerging and developing economies. Our Global Policy Lab mobilises LSE faculty and students through connecting them with academics and policymakers in these economies, currently on five challenges: global growth (Middle Income Trap), global finance (Rethinking Global Finance), migration (Global Migration Initiative), disinformation (Arena Project) and Climate and the Ocean (Blue

Finance). With the arrival of COVID-19 we have also taken on a global health initiative focusing on the intersection of the pandemic and the five challenges (Living with COVID-19). IGA also offers a ‘safe space’ that is open, fair and transparent and where students, government, private sector and civil society from all around the world can meet to address the challenges of the 21st century. The Maryam Forum is our vehicle to bring together the necessary coalitions and help build much needed ecosystems of leadership, nationally and globally.

With thanks to the partners of the Maryam Forum Conference 2020

CEPR

The **Centre for Economic Policy Research** is a network of over 1500 Research Fellows and Affiliates, based primarily in European universities. The Centre coordinates the research activities of its Fellows and Affiliates and communicates the results to the public and private sectors. CEPR is an entrepreneur, developing research initiatives with the producers, consumers and sponsors of research. Established in 1983, CEPR is a European economics research organisation with uniquely wide-ranging scope and activities. The Centre is pluralist and non-partisan, bringing economic research to bear on the analysis of medium- and long-run policy questions.

THINKING^{the} UNTHINKABLE

Thinking the Unthinkable (TTU) provides original research interviewing leaders and helps build a new type of leadership that thrives on change. TTU supports leadership transformation to make it fit for radical uncertainty through providing independent, tailored analysis of ongoing threats and helping with the transformation tools to adapt and innovate.



The **LSE Department of Geography and Environment** is a centre of international academic excellence in economic, urban and development geography, environmental social science and climate change. The Department is highly regarded both nationally and internationally with major specialities within the economic, development, urban, regional planning and environmental social science aspects of geography, all with a strong emphasis on application and policy issues.



The **LSE Department of Economics** is one of the biggest and best in the world, with expertise across the full spectrum of mainstream economics. A long-standing commitment to remaining at the cutting edge of developments in the field has ensured the lasting impact of its work on the discipline as a whole. Almost every major intellectual development within Economics over the past fifty years has had input from members of the department, which counts ten Nobel Prize winners among its current and former staff and students. Our alumni are employed in a wide range of national and international organisations, in government, international institutions, business and finance.



The **LSE European Institute** is a centre for research and graduate teaching on the processes of integration and fragmentation within Europe. In the most recent national Research Excellence Framework (REF 2014) the Institute was ranked first for research in its sector.



The **Grantham Research Institute on Climate Change and the Environment** was established by the London School of Economics and Political Science in 2008 to create a world-leading centre for policy-relevant research and training on climate change and the environment, bringing together international expertise on economics, finance, geography, the environment, international development and political economy.

Programme: Day 1

Tuesday 8th December 2020

14:00-17:30 GMT

14:00-14:15

Welcome and Opening

Andrés Velasco, Dean, School of Public Policy, LSE; **Khalid Janahi**, CEO Vision 3; **Erik Berglof**, Chief Economist, Chief Economist, Asian Infrastructure Investment Bank (AIIB) and LSE; **Piroska Nagy-Mohácsi**, Interim Director, Institute of Global Affairs, School of Public Policy, LSE

14:15-15:00

What Do Leaders Need to Change NOW? Maryam Forum Student Leaders Session (Co-hosted with Thinking the Unthinkable)

Our world has been transformed and convulsed in the year since COVID-19 disrupted all our lives. Some leaders have been inspirational, so they thrived, but many leaders have struggled and quite a few failed.

LSE Maryam Forum students will discuss new ideas on how policies must change, drawing on LSE's new Co-Labs on key policy challenges. They will debate new ideas on how leadership must adapt to thrive and address the huge challenges looming for 2021.

Speakers:

Piroska Nagy-Mohácsi (Chair), Interim Director, Institute of Global Affairs, School of Public Policy, LSE; **Nik Gowing** (Moderator), Founder and Co-Director, Thinking the Unthinkable; **Chris Langdon** (Moderator), Co-Director, Thinking the Unthinkable

Maryam Forum Students: Katie Alesbury, Mahima Andrew, Domenica Avila Luna, Santina Bevacqua, Paulina Chan, Adrian Fossaceca, Hassan Gali (alumnus), Fernanda Garcia Sanchez, John Gordon, Benjamin Grazda, Omnia Hamza, Mohamad Nassar, Asha Niall, Muskaan Sofet, Karina Rodriguez Villafuerte, Zhu Jintao (all LSE), and Lisa Carroll (University of Kiel)

15:00-16:00

WEBINARS IN PARALLEL CO-HOSTED WITH CEPR:

●WEBINAR 1: New Rules for Finance & the Global Financial Architecture?

The emergency response to the COVID crisis has exacerbated many of the issues our economies have been facing since the global financial crisis. Governments are financing themselves through national debt issuance only seen in wartime. Central banks' unconventional instruments have been massively scaled up and currency swaps of leading central banks have been rolled out.

The urgency - and innovativeness - with which these decisions had to be made has allowed policy to outpace theory. This gap in knowledge urgently needs to be bridged, so that informed decisions can be made on the issues facing central banking decisions.

Speakers:

Ricardo Reis (Chair), Arthur Williams Phillips Professor of Economics, Department of Economics, LSE; **Franklin Allen**, Professor of Finance and Economics and Director of the Brevan Howard Centre, Imperial College London; **Piroska Nagy-Mohácsi**, Interim Director, Institute of Global Affairs, LSE.

Maryam Forum Student Leader: John Gordon, MSc Economics student, LSE

●WEBINAR 2: Democracy and Disinformation

Digital technology has fundamentally undermined previous definitions of a democratic information environment. In the 20th century democracies were defined by freedom of expression, pluralism and the metaphor of a 'marketplace of ideas', and authoritarian regimes by censorship and state media control. Today, however, we see authoritarians and 'hybrid' regimes multiplying content rather than constricting it: flooding the information space with unprecedented amounts of digitally powered disinformation, and undermining critics with cyber militias and online mobs. Meanwhile, inside democracies pluralism is tipping into polarisation so extreme it breaks down the possibility for deliberative debate.

The principles underpinning a democratic information environment need to be reimagined for the digital age. What sort of oversight and control do we need over algorithms and the design of online platforms? How can we reinvent media to overcome polarisation? Can democracies build coalitions to withstand the authoritarian threat?

Speakers:

Peter Pomerantsev (Chair), Senior Fellow, Agora Institute Johns Hopkins University and Senior Fellow, Institute of Global Affairs, LSE; **Chloe Colliver**, Head of Digital Policy and Strategy, Institute for Strategic Dialogue (ISD); **James Deane**, Director of Policy and Research, BBC Media Action; **Sophia Gaston**, Head of Research, Arena, LSE; Academic Fellow, European Policy Centre in Brussels and Managing Director, British Foreign Policy Group; **Delphine Hagand**, Executive Director, The Signals Network; **Shawn Powers**, Chief Strategy Officer, U.S. Agency for Global Media (USAGM)

Maryam Forum Student Leader: Benjamin Grazda, MSc in Conflict Studies student, LSE

16:00-17:30

Why Does Globalization Fuel Populism, and What Can We Do About It?

Hosted by the LSE United States Centre as part of the Wenger Distinguished Lectures

Professor Dani Rodrik, Harvard Kennedy School, in discussion with **Professor Sarah Hobolt**, LSE European Institute; **Professor Peter Trubowitz** (Chair), Director, US Centre, LSE

This session requires a separate registration ([click here to register](#))

Programme: Day 2

Wednesday 9th December 2020

14:00-16:45 GMT

14:00-14:10

Welcome to Day 2 - Round-up of Day 1: Video highlights of Day 1 student session: What do Leaders Need to Change NOW?

14:10-15:45

High Level Policy Panel: A New Policy Paradigm for the Post-COVID World

Rarely, perhaps never, has the world faced such an array of challenges, as distinct as they are interdependent. At the forefront are a health catastrophe and an economic crisis that together are blighting lives and jeopardizing the fight against hunger, poverty, inequality and climate change.

With the vaccine now within reach, policy attention can focus on what should be a transformational recovery. The crisis provides a unique opportunity for nations and the global community to re-evaluate many aspects of the modern economy, society, and government. If we return to the "old normal," this window of opportunity will have been lost.

Against this backdrop, we will ask our panelists the following questions. What are the key policy priorities for economic recovery? How should we deal with the legacy of the crisis response: historically high public and corporate debt, worsening inequality, and a cohort of children who have missed a year of education? How do we make faster progress against climate change in this new context? How do we factor into policy the implications – both good and bad – of the step change in digitalisation in all aspects of our lives over just 10 months? How do we reform global processes and institutions? Are we ready for a new social contract, and if so, what should it look like?

Speakers:

Andrés Velasco (Chair), Dean, School of Public Policy, LSE; **Anthony Williams** (Moderator), Former Journalist, Reuters and Communications, EBRD;

Jonathan Black, UK Prime Minister's G7/G20 Sherpa; **Gordon Brown**, United Nations Special Envoy for Global Education and former Prime Minister of the United Kingdom; **Beata Javorcik**, Chief Economist, European Bank for Reconstruction and Development (EBRD); **Jin Liqun**, President and Chair, Asian Infrastructure Investment Bank; **Minouche Shafik**, Director, LSE; and **Tharman Shanmugaratnam**, Senior Minister, Singapore.

Maryam Forum Student Leader: Mahima Andrew, Second Year MPA student, LSE

15:45-16:45

WEBINARS IN PARALLEL CO-HOSTED WITH CEPR:

●WEBINAR 3: How to Lead Better Responses to Global Emergencies?

COVID-19 has presented a serious, almost existential, challenge to every country around the world, and is the definition of a truly global emergency. While national responses have varied in effectiveness, because of differing leadership and state capacity, the pandemic has also highlighted how the global and national systems we have in place for dealing with global emergencies are either not fit for purpose or have been hamstrung by those upon whose leadership they depend. Global emergencies demand coordinated responses, effective institutions and global public goods like data.

The panel will discuss recent research and the key lessons learned from the COVID crisis and propose solutions bringing together global health, epidemiology and economics. How can we integrate experimentation and active real-time learning into policy-making in a crisis? How can we share national data across borders for the benefit of all? How can we support developing countries now to build economic resilience to deal with a future crisis?

Speakers:

Adnan Khan (Chair), Professor in Practice, LSE School of Public Policy and Associate, STICERD; **Erik Berglof**, Chief Economist, Asian Infrastructure Investment Bank and LSE; **Astrid Haas**, Former Policy Director, International Growth Centre (IGC).

Maryam Forum Student Leader: Hassan Gali, MPP, LSE Alumnus currently Policy and Governance Department, EBRD

●WEBINAR 4: Human Mobility: Towards Enhanced Integration and Social Cohesion

Migration and forced displacement feature prominently in national, regional, and global politics and policies. Yet, the debate is often infused with a political and populist narrative that is not founded in evidence. Given this backdrop, the webinar on Human Mobility will seek to have a factual discussion on these emotive issues, grounded in recent research. The panel will also discuss a set of potential policy solutions to both improve the integration of migrants and refugees in labour markets and to promote healthy attitudes towards them to bolster social cohesion.

Speakers:

Angelo Martelli (Chair), Assistant Professor in European and International Political Economy, European Institute, LSE; **Dominik Hangartner**, Associate Professor, ETH Zurich and LSE; **Shaden Khallaf**, UNHCR; and **Bilal Malaeb**, Postdoctoral Research Officer, Institute of Global Affairs, LSE

Maryam Forum Student Leader: Doménica Avila Luna, Second Year MPA student, LSE

Programme: Day 3

Thursday 10th December 2020

14:00-18:30 GMT

14:00-14:05

Welcome to Day 3 and round-up of Day 2

14:05-14:30

Conversation on the Implications of the US Elections for the World

Guest speakers:

Sergei Guriev, Scientific Director of the Master and PhD programmes in Economics, Sciences Po and Research Fellow, CEPR, **Michael Cox**, LSE IDEAS

15:00-16:00

WEBINARS IN PARALLEL CO-HOSTED WITH CEPR:

● **WEBINAR 5: Innovation and Inclusive Growth:**

How to Transform Global Linkages and Industrial Policy for a New Era

The economic and public health challenges and policy responses created by COVID-19 have led to an acceleration of some key pre-existing trends, namely: geo-political fragmentation, the reorganisation of global value chains and the adoption of new technologies. These shifts have profound implications for patterns of economic growth and prosperity. This webinar will discuss how policy makers can best leverage new opportunities (such as artificial intelligence, big data and working-from-home) to pursue sustainability and inclusivity through innovative solutions. The webinar will discuss how public policies can embrace an open and 'global' approach to the generation of innovation, growth and employment opportunities, such that internationalisation, foreign direct investment and global value chains can take centre stage in an inclusive recovery after the pandemic.

Speakers:

Riccardo Crescenzi (Chair), Professor of Economic Geography, LSE and Associate, Centre for International Development; **Juan Alcacer**, James J. Hill Professor of Business Administration, Harvard Business School; **James Zhan**, Senior Director of Investment and Enterprise, UNCTAD

Maryam Forum Student Leader: Jintao Zhu, LSE BSc in Philosophy, Politics and Economics (PPE) 4th Year student.

● **WEBINAR 6: Charting a New Path on Climate Change, Oceans and Financial Risks**

Decision makers often shy away from investment in climate resilience because of its lack of political appeal. But such investments, including investing in our planet's natural resources – or "natural capital" – in particular, are cost effective and can be hugely beneficial for whole sectors of society. They are crucial to reducing the

negative impact of climate change, unlocking development potential and protecting our environment. What can policymakers, including central banks and regulators, do to encourage the flow of finance to our cities, our forests and our oceans to reduce the risks from climate change? What can we all do to make sure our COVID economic recovery packages include both the policies and investments for climate change mitigation and adaptation?

Speakers:

Swenja Surminski (Chair), Head of Adaptation Research, Grantham Research Institute on Climate Change and the Environment, LSE; **Elod Takats**, Principal Economist, Financial Systems and Regulation, Monetary and Economic Department, Bank of International Settlements (BIS); **Torsten Thiele**, Visiting Fellow, Institute of Global Affairs, LSE and Executive Director, Global Ocean Trust; and **Oliver Walker**, Principal, Natural Resources, Vivid Economics.

Maryam Forum Student Leader: Karina Rodriguez-Villafuerte, second-year Master of Public Administration student, LSE

15:30-16:30

Changing Policy Making for Good: Discussion with the LSE Maryam Forum students

This is a thought provoking discussion between students and policy makers, where students engage with genuine policy practitioners to learn their views on the validity of recommendations against the reality of implementation challenges. This session provides an opportunity for the next generation of leaders to learn from the experience of experts and understand the challenges of policymaking in the real world. As experts in their roles, policymakers will draw out priorities to manage risks and disruptions and discuss viable strategies that leaders and governments must adopt in the new post-Covid paradigm. Through this dialogue we will hear policymakers and student's brainstorm to find practical ways of ensuring policies create long-term value for humanity.

Guests:

Vanessa Rubio Márquez, Senator and Former Undersecretary of Finance and Public Credit, Mexico; **Andrés Velasco**, Dean, School of Public Policy, LSE, and Former Minister of Finance, Chile.

Student participants: as per Day 1

16:30-17:15

Maryam Forum Call to Action - Public Declaration to G7 and G20 and National Leaders

Finalisation and Validation Session: **Piroska Nagy-Mohácsi**, LSE; **Erik Berglof**, AIIB and LSE; **Mandeep Bains**, LSE; and LSE Maryam Forum Student Leaders.

17:15 - 17:30 Closing and Next Steps

Andrés Velasco, Dean, School of Public Policy, LSE; **Piroska Nagy-Mohácsi**, Interim Director, Institute of Global Affairs, LSE; **Khalid Janahi**, Chair, Vision 3; and **Erik Berglof**, Chief Economist AIIB and LSE

17:30-18:30 - Post-event: Student-Led "Maryam Forum Happy Hour"

Hosts: LSE Maryam Forum Students.

Message to World Leaders from LSE Maryam Forum Student Leaders

We divide history into two parts, the one we like to remember, and the one we seek to actively forget. With an effective distribution of a vaccine still far off, it is important to think about how we will remember COVID-19. The pandemic has been a watershed for all of us. It has shaken us to the core, challenged our innate sense of invulnerability, and forced us to question everything, from our healthcare systems to the legitimacy of our governments.

We, the next generation of leaders, have expected a lot from our current leaders. The COVID challenge is enormous. It can be overcome only if the world is able to unite, drawing on our diversity and power of collective wisdom. Yet what we have seen too often is distrust and division. Many leaders have failed us by not acting quickly and disregarding/abandoning global cooperation; others have even profited from corruption in the face of a global emergency. We have suffered enormously from this unspoken collective trauma. We now suggest radical changes to ensure that lessons are learnt from this crisis. As the young citizens of nations, we respectfully demand a shift in perspective to find a new momentum:

- We demand that our leaders ensure transparency, trust and national unity along with robust economic measures. Leaders that stand in solidarity are especially valuable now that we have come to terms with how fragile we are as a human race.
- We need our leaders to build resilient governments that can effectively manage crises, with the wellbeing and protection of their citizens at the forefront of policy decisions.
- We demand the leaders of developed countries that have a comparative advantage in the production and distribution of vaccines to join hands and build partnerships across the world, by combining their capacities in making testing mechanisms, vaccines and treatments accessible to everyone, regardless their age, gender or socioeconomic status. In our global world we are protected only if all of humanity is protected.
- We request that countries which have been more resilient support developing countries to deal with the economic impact of COVID-19 and to tackle job losses and economic and financial instability.
- We ask leaders of the developing world to adapt "smart" targeted policies in which lockdowns do not disproportionately affect the most vulnerable.
- We ask leaders to design policies for recovery and post-COVID growth that help reduce poverty and inequality. We suggest inclusive recovery strategies that do

not leave anybody behind and ensure communities such as migrants and refugees also get access to medical services.

- We strongly support "build back better" policies from the pandemic to confront the climate crisis and change global attitudes and intentions. Climate change is a looming emergency where we expect our leaders to take action and preserve what is truly important: the planet. Our leaders must ensure governments and industries are active defenders of the planet. Therefore, we expect strong green and blue recovery packages.
- We demand more representation by young citizens in tax reforms and social benefits policy. As our economic systems are under tremendous stress, much of the burden will be intergenerational. We seek to actively participate and shape economies to build back better, with green-minded investments and decent jobs.
- We demand leaders and governments devise strategies that effectively tackle disinformation. In an era of massive disinformation with devastating real-world impacts, we want healthy democracies with competing ideas instead of struggling democracies flooded by strategic misinformation and fake news/propaganda. We reject information that seeks to divide our societies and dismantle vital institutions.
- We ask our leaders to look beyond winning elections and redirect their focus and politics towards good governance. The leaders of today need to ask what kind of legacy they want to leave behind, and what kind of world their children and grandchildren will inherit.
- Finally, we ask our leaders to hear the fresh perspectives, the digital nativism, and the activism from young people in every corner of the world, in every debate and every policy design. We need policy-making to be inclusive, with representation of the young generation from around the world. We need you to please trust us and listen to us. We are eager to contribute with ideas and creativity to frame recovery strategies and shape the future of the next generation.

This is why, as young citizens from around the world, we are joining platforms where our voices can be heard. This is why we have joined the Maryam Forum, where we work with policy-makers, business leaders and academics to seize the moment and rise beyond the COVID crisis.

Student Authors: Mahima Andrew, Domenica Avila Luna, Hassan Gali (alumnus), John Gordon, Benjamin Grazda, Karina Rodriguez Villafuerte, Zhu Jintao (all LSE)

[Click here to link to GPOL Publication](#)

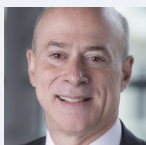
Speakers



Juan Alcacer

Professor of Business Administration, Harvard Business School

Juan Alcacer is the James J. Hill Professor of Business Administration at Harvard Business School. Professor Alcacer's research are in strategy, growth and innovation. His recent research focuses on growth and exit strategies, strategies to cope with major shifts in the environment (such as Brexit) and strategic decision-making under geopolitical and technological uncertainty. Professor Alcacer is a member of the Academy of Management and the Strategic Management Society, has served on numerous boards of academic journals and is an associate editor of Management Science.



Franklin Allen

Professor of Finance and Economics and Director of the Brevan Howard Centre, Imperial College London

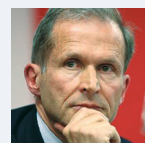
Franklin Allen is Professor of Finance and Economics and Director of the Brevan Howard Centre at Imperial College London. Formerly on the faculty of the Wharton School of the University of Pennsylvania, he was Vice Dean and Director of Wharton Doctoral Programs, Co-Director of the Wharton Financial Institutions Centre, Executive Editor of the Review of Financial Studies and Managing Editor of the Review of Finance. He is a past President of the American Finance Association, the Western Finance Association, the Society for Financial Studies, the Financial Intermediation Research Society and the Financial Management Association, and a Fellow of the Econometric Society.



Mandeep Bains

Maryam Forum, LSE

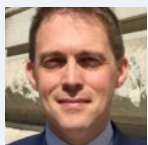
Mandeep is currently involved in a diverse range of projects; supporting the IGA at the LSE with the Maryam Forum, as well as advising national governments, international organisations and the G20. At the EBRD she was most recently Deputy Director for Corporate Strategy and also led institutional relations with the international financial institutions and the European Union. Previously, Mandeep spent several years at the European Commission, serving in both the economics and development Directorates General, and advising on international economic matters in the private offices of two European Commissioners for economic and monetary affairs. She also worked for the UK's DFID and the United Nations.



Erik Berglof

Chief Economist, Asian Infrastructure Investment Bank and LSE

Erik Berglof is the inaugural Chief Economist at the Asian Infrastructure Investment Bank. Before joining AIIB, he was Director of the Institute of Global Affairs at the LSE School of Public Policy and Chief Economist of the European Bank for Reconstruction and Development. Professor Berglof has published widely in top journals on economic and political transition, corporate governance, financial development, and EU reform. He was a member of the Secretariat for the G20 Eminent Persons Group on Global Financial Governance, EU Wise Persons Group on European Development Finance Architecture, and the World Economic Forum Global Futures Council on the Financial and Monetary Systems.



Jonathan Black

UK Prime Minister's G7/G20 Sherpa

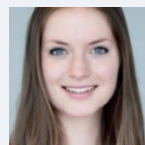
Jonathan Black is the Prime Minister's G7/G20 Sherpa. His portfolio covers international economic issues, including the global economy, international trade, climate change, development, economic security, global health, technology, and related policy issues. Jonathan acts as the senior Cabinet Office interlocutor with Whitehall departments on international economic policy issues. Prior to this, he was Director General and Deputy Head of the Europe Unit at the Cabinet Office and one of the UK's principal EU exit negotiators. He has also held a number of roles at HM Treasury, including Press Secretary and Private Secretary to Chancellors of the Exchequer.



Gordon Brown

United Nations Special Envoy for Global Education and former Prime Minister of the United Kingdom

Gordon Brown served as Prime Minister of the United Kingdom from 2007 to 2010, Chancellor of the Exchequer from 1997 to 2007 and as a Member of Parliament in his home county of Fife, Scotland, from 1983 to 2015. He is the United Nations Special Envoy for Global Education and is a passionate advocate for the rights of children. He believes every girl and boy deserves the opportunity of a future through schooling. Gordon is Chair of the High Level Steering Group for the Education Cannot Wait fund for education in emergencies, Chair of the Inquiry on Protecting Children in Conflict and also serves as Chair of the International Commission on Financing Global Education Opportunity. Gordon is the author of several books including *Beyond the Crash: Overcoming the First Crisis of Globalisation* and *My Life, Our Times*.



Chloe Colliver

Head of Digital Policy and Strategy, ISD

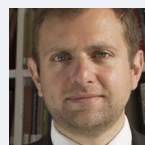
Chloe Colliver is Head of Digital Policy and Strategy at the Institute for Strategic Dialogue (ISD), leading a global team of analysts studying disinformation and extremism online. She has led programmes of work detecting and responding to online manipulation targeting the German, European Parliamentary, UK, Swedish and US Elections.



Michael Cox

Founding Director of LSE IDEAS

Professor Michael Cox was appointed to a Chair in International Relations at the LSE in 2002 where he went on to help establish the Cold War Studies Centre in 2004 and LSE IDEAS in 2008. A prolific author and internationally recognized public speaker, his most recent books include a collection of his own essays, *The Post-Cold War World* (2018), a centennial edition of J M Keynes' *The Economic Consequences of the Peace* (2019), and (forthcoming in 2021) a new edition of E H Carr's classic 1945, study, *Nationalism and After*. He is now working on a new history of LSE entitled, *The "School": LSE and the Shaping of the Modern World*.



Riccardo Crescenzi

Professor of Economic Geography, LSE

Riccardo Crescenzi is Professor of Economic Geography at the LSE. He is also an Associate at the Centre for International Development (CID) at the Harvard Kennedy School of Government, Harvard University and is affiliated with the Centre for Economic Performance (CEP) and the Spatial Economics Research Centre (SERC) at the LSE. He has been a Visiting Scholar at the Harvard Kennedy School of Government, Taubman Centre, Harvard University.



James Deane

Director of Policy and Research, BBC Media Action

James Deane is Director of Policy and Research at BBC Media Action, the BBC's international media support charity. He is also currently developing the feasibility of an International Fund for Public Interest Media. He has more than 30 years of experience in support to independent media around the world, including being a founding member and executive director of the Panos Institute, London.



Sophia Gaston

Academic Fellow, European Policy Centre in Brussels and Managing Director, British Foreign Policy Group

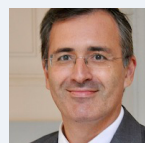
Sophia Gaston is the Director of the British Foreign Policy Group, and a social and political researcher specialising in public opinion. Her research particularly explores threats to governance in advanced liberal democracies, including - populism, nationalism, cultural insecurity, nostalgia and the rise of anti-establishment movements. Sophia is a Research Fellow in the Institute for Global Affairs at the London School of Economics and Political Science, and an Academic Fellow at the European Policy Centre in Brussels.



Nik Gowing

Founder and Co-Director, Thinking the Unthinkable

Nik Gowing founded the ongoing, dynamic "Thinking the Unthinkable" project in 2014 on the new frailties for leadership, including from the new cyber realities. Nik was a main news presenter for BBC World News 1996-2014. He presented The Hub with Nik Gowing, BBC World Debates, Dateline London. For 18 years he worked at ITN. He was bureau chief in Rome and Warsaw, and Diplomatic Editor for Channel Four News (1988-1996). He has been on the councils of Chatham House (1998-2004), the Royal United Services Institute (2005-present), the Overseas Development Institute (2007-2014), the Westminster Foundation for Democracy (1996-2005). In 2018 advised the President of the UN General Assembly on leadership challenges. He has been a member of the World Economic Forum's Global Agenda Council on Geo-Economics.



Sergei Guriev

Scientific Director of the Master and PhD programmes in Economics, Sciences Po and Research Fellow, CEPR

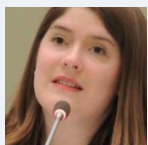
Sergei Guriev joined the Science Po's Department of Economics in 2013 and since 2019, he is the Scientific Director of Sciences Po's Master's and PhD programmes in economics. He is a Research Fellow at the Center for Economic Policy Research (CEPR) and member of the Executive Committee of the International Economic Association. In 2016-19, he served as the Chief Economist at the European Bank for Reconstruction and Development. In 1999-2013, he was on the faculty of the New Economic School in Moscow, in 2004-13 being a tenured faculty member and Rector of the New Economic School.



Astrid Haas

Former Policy Director, International Growth Centre (IGC)

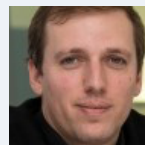
Astrid Haas is an urban economist and Cities That Work council member. She has worked in government and non-governmental organisations across various countries. She is the former Policy Director of the International Growth Centre (IGC), based in Uganda, where she managed and carried out policy-based research on cities based on demand from the government. Her research specialises in urban economics, specifically in the areas of municipal finance, urban mobility and land tenure. In 2016, she was nominated by the University of Cape Town as one of Africa's Young Leaders.



Delphine Halgand

Executive Director, The Signals Network

Delphine Halgand-Mishra is the Executive Director of The Signals Network, a non-profit organization which supports whistleblowers who have shared major public interest information with the press. She previously served for six years as Reporters Without Borders' North America Director, advocating for journalists, bloggers, and media rights worldwide. She was the Lead Rapporteur for the Forum on Information and Democracy's Policy Framework report.



Dominik Hangartner

Associate Professor, ETH Zurich and LSE

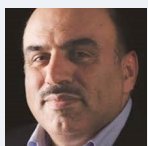
Dominik Hangartner is an Associate Professor at ETH Zurich and in the Department of Government at the LSE, and Faculty Co-Director of the Immigration Policy Lab with branches at Stanford University and ETH Zurich. He uses fieldwork and statistics to study the effects of migration policies and political institutions. His work has been published in leading scholarly journals. Dominik has received several awards including the Philip Leverhulme Prize and the National Latsis Prize. He holds a PhD in Social Science from the University of Bern.



Sara Hobolt

Sutherland Chair in European Institutions, LSE

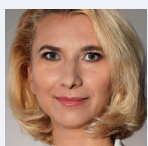
Sara Hobolt is the Sutherland Chair in European Institutions and Professor in the Department of Government and the European Institute. Previously, she has held posts at the University of Oxford and the University of Michigan. She is the Chair of the European Election Studies (EES), an EU-wide project studying voters, parties, candidates and the media in European Parliamentary elections, and the Principal Investigator of the ERC-funded project EUDEMOS: Constrained Democracy: Citizens' Responses to Limited Political Choice in the European Union.



Khalid Janahi

Chair, Vision 3

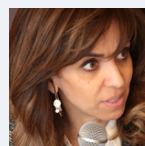
Khalid Janahi has 38 years experience in banking and financial services, including serving as Group CEO of Dar Al-Maal Al-Islami Trust, Chairman of Faisal Private Bank, Ithmaar Bank and Solidarity Co. Served as Vice Chairman of Arab Business Council of the World Economic Forum. Currently on various boards and chairs Vision 3, with a focus on venture and infrastructure.



Beata Javorcik

Chief Economist, European Bank for Reconstruction and Development (EBRD)

Beata Javorcik is Chief Economist of the European Bank for Reconstruction and Development (EBRD) in London. She is on leave from the University of Oxford, where she is the first woman to hold a Statutory Professorship in Economics. She is also a Fellow of All Souls College, Oxford, a member of the Royal Economic Society's Executive Committee and a Director of the International Trade Programme at the Centre for Economic Policy Research in London. She has worked at the World Bank in Washington DC, where she focused on research, lending operations and policy advice. She holds a Ph.D. in Economics from Yale and a B.A. in Economics (Summa cum Laude) from the University of Rochester.



Shaden Khallaf

Senior Policy Advisor, UNHCR

Shaden Khallaf is the Senior Policy Advisor for the Middle East and North Africa at the United Nations High Commissioner for Refugees (UNHCR). She is an international expert in humanitarian and development affairs. She advocates for human dignity and women's empowerment. Her expertise includes human rights; violence, post-conflict transitions, gender policy. Shaden has lectured at the American University in Cairo, and the University of Jordan. She pioneered the MENA Civil Society Network for Displacement. Shaden was selected among the "365 Inspiring Arab Women" by Women in Business Arabia.



Adnan Khan

Professor in Practice, LSE School of Public Policy and Associate, STICERD

Before joining the School of Public Policy and STICERD, Professor Khan served as Research and Policy Director at the International Growth Centre at the LSE for ten years. During 2018-19, he was a Visiting Lecturer of Public Policy at the Harvard Kennedy School. Professor Khan has spent more than 15 years in the policy world as a practitioner, policymaker and activist, and more than 10 years in the research world as an instructor, researcher and as a catalyser of other people's research. His areas of interest include economic development and state capacity, political economy and state fragility, and public finance.



Chris Langdon

Co-Director, Thinking the Unthinkable

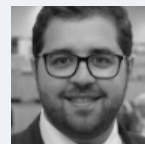
Chris Langdon FRSA is Co-Director of Thinking the Unthinkable. He co-wrote the book of the same name with Nik Gowing. Chris specialises in public policy and governance. He works with senior policy-makers, business leaders and heads of third sector organisations. He was MD of the Oxford Research Group from 2010-2014. He worked on European policy in 8 EU capitals for the ESI think tank, 2008-2010. From 1997-2008 he was an Associate Director of the UK Foreign Office's internationally renowned conference centre, Wilton Park. Chris began his career in television; he was senior foreign affairs producer for BBC TV News during the fall of communism from 1989-1990.



Jin Lique

President and Chair, Asian Infrastructure Investment Bank

Jin Lique is the inaugural President and Chairman of the Board of Directors at the AIIB. On July 28, 2020, he was elected to serve a second term of five years. Before being elected as the Bank's first president, Mr. Jin served as Secretary-General of the Multilateral Interim Secretariat tasked with establishing the Bank. He served as Chairman of China International Capital Corporation Limited, China's first joint-venture investment bank, Chairman of the Supervisory Board of China Investment Corporation, and as Chairman of the International Forum of Sovereign Wealth Funds. Mr. Jin previously served as Vice President, and then Ranking Vice President, of the Asian Development Bank, and as Alternate Executive Director for China at the World Bank and at the Global Environment Facility. He spent nearly two decades at the Chinese Ministry of Finance, reaching the rank of Vice Minister.



Bilal Malaeb

Postdoctoral Research Officer, Institute of Global Affairs, LSE

Bilal Malaeb is a postdoctoral research officer at the Institute of Global Affairs at the LSE. His expertise are in development economics, and his research interests are in migration, poverty, and labour market issues. Prior to joining the LSE, he held research positions at the University of Oxford and the University of Southampton, and he holds a PhD in Economics from the University of Manchester. On the policy side, Bilal has consulted with the ILO, the IFAD, IGC LSE-Oxford Commission on State Fragility, and the World Bank.



Angelo Martelli

Assistant Professor in European and International Political Economy, European Institute, LSE

Angelo Martelli is Assistant Professor in European and International Political Economy at the LSE European Institute. He worked as a Consultant for the Jobs Group of the World Bank, as a Policy Fellow for the Open Innovation Team of the UK Cabinet Office and HM Treasury and as a Technical Expert for the IMF. His research interests span labour economics and European political economy, with a particular focus on the impact of technology on the evolution of employment structures across Europe and its implications for labour market institutions and income inequality. He co-leads the IGA Global Migration Initiative and was an integral part in the launch of the Alliance of Leading Universities on Migration (ALUM).



Piroska Nagy-Mohácsi

Interim Director, Institute of Global Affairs, LSE

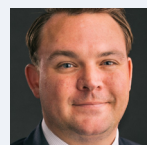
Piroska Nagy-Mohácsi is a macroeconomist and Interim Director of the Institute of Global Affairs at the School of Public Policy of the LSE. She was formerly Policy Director of the European Bank for Reconstruction and Development and co-created and co-led the Vienna Initiative in 2008-15, a public-private crisis management and coordination platform in emerging Europe, and headed its Secretariat. She previously worked in senior positions as economist for the IMF between 1986 and 2008. While on leave from the IMF, she was guest lecturer at the Hebrew University of Jerusalem in 1996/97 and Senior Adviser at Fitch Ratings in 2003/4. She has published extensively in the areas of financial stability, fiscal policy reform and structural transformation, and the rise of economic populism.



Peter Pomerantsev

Senior Fellow, Agora Institute Johns Hopkins University and Senior Fellow, Institute of Global Affairs, LSE

Peter Pomerantsev is an author and TV producer. He currently serves as Visiting Senior Fellow at the Institute of Global Affairs where he is Co-Director of the Arena disinformation think tank. He is also a Senior Fellow at the SNF Agora Institute at Johns Hopkins University. He specialises on propaganda and media development.



Shawn Powers

Chief Strategy Officer, U.S. Agency for Global Media (USAGM)

Shawn Powers serves as the U.S. Agency for Global Media's (USAGM) Chief Strategy Officer, leading its international engagement, strategic planning, strategic initiatives, and partnerships with key stakeholders. He has a Ph.D. from the University of Southern California and more than a decade of experience working at the nexus of media, technology, and international relations. Previously Powers served as Executive Director of the United States Advisory Commission on Public Diplomacy and an Associate Professor at Georgia State University. He published the award-winning *The Real Cyber War: A Political Economy of Internet Freedom* (The University of Illinois Press, 2015) and has over 40 publications in academic and mainstream outlets.



Ricardo Reis

Arthur Williams Phillips Professor of Economics, Department of Economics, LSE

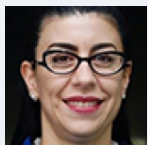
Ricardo Reis is the Arthur Williams Phillips Professor of Economics in the Department of Economics at LSE. Recent honours include the 2016 Bernacer prize for best European economist under the age of 40 working in macroeconomics and finance, and the 2017 Banque de France / Toulouse School of Economics junior prize in monetary economics, finance, and bank supervision for a researcher of any nationality based in Europe. Professor Reis is an academic consultant at the Bank of England and the Federal Reserve system, he directs the ESRC Centre for Macroeconomics in the UK, is a recipient of an ERC grant from the EU, and serves on the council or as an advisor of multiple organisations.



Dani Rodrik

Ford Foundation Professor of International Political Economy at Harvard's John F. Kennedy School of Government

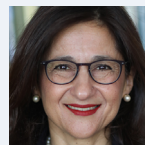
Dani Rodrik is the Ford Foundation Professor of International Political Economy at Harvard's John F. Kennedy School of Government. He is currently President-Elect of the International Economic Association, and co-director of Economics for Inclusive Prosperity. His newest book is *Straight Talk on Trade: Ideas for a Sane World Economy*.



Vanessa Rubio

Senator and Former Undersecretary of Finance and Public Credit, Mexico

Vanessa Rubio Márquez is the first woman to hold the position of Undersecretary of Finance and Public Credit in Mexico. She was appointed by President Peña-Nieto on September 8, 2016. Ms. Rubio has over 20 years of experience in public service, and previously served as Undersecretary for Planning, Evaluation and Regional Development in the Ministry of Social Development since September 2015. Between January 2013 and September 2015, she was Undersecretary for Latin America and the Caribbean in the Ministry of Foreign Affairs. Ms. Rubio has a degree in International Relations from the National Autonomous University of Mexico (UNAM) and a Master of Science from the London School of Economics (LSE).



Minouche Shafik

Director, LSE

Nemat (Minouche) Shafik is a leading economist, whose career has straddled public policy and academia. She was appointed Director of LSE in September 2017. She did her BA at the University of Massachusetts-Amherst, her MSc at LSE and her DPhil at the University of Oxford and, by the age of 36, had become the youngest ever Vice President of the World Bank. She taught at Georgetown University and the Wharton Business School. She later served as the Permanent Secretary of the Department for International Development from 2008 to 2011, Deputy Managing Director of the International Monetary Fund from 2011-2014 and as Deputy Governor of the Bank of England from 2014-2017, where she sat on all the monetary, financial and prudential policy committees and was responsible for a balance sheet of over £500 billion.



Tharman Shanmugaratnam

Senior Minister, Singapore

Tharman Shanmugaratnam is Senior Minister in Singapore. He served earlier as Deputy Prime Minister and Finance Minister for several years. He chairs the National Jobs Council, aimed at rebuilding jobs and skills in the wake of COVID-19. Tharman is also Chairman of the Monetary Authority of Singapore. Internationally, Tharman chairs the Group of Thirty, an independent council of economic and financial leaders. He led a G20 Eminent Persons Group in 2017-2018. He currently also co-chairs the Global Education Forum, and the Advisory Board for the UN's Human Development Report. Studied at the LSE, University of Cambridge and Harvard University.



Swenja Surminski

Head of Adaptation Research, Grantham Research Institute on Climate Change and the Environment, LSE

Swenja Surminski is Head of Adaptation Research at the LSE Grantham Research Institute on Climate Change and the Environment overseeing social science research projects on climate adaptation, loss and damage of climate change, and disaster risk finance with a geographic scope ranging from the UK to developing countries. Swenja's research is investigating climate risk management and resilience strategies focusing on public policies, financial instruments and individual behaviour through a mix of inter-disciplinary approaches, integrating concepts from geography, climate science, economics and governance studies. Prior to joining LSE in 2010 Swenja spent more than ten years in the insurance industry working on climate and risks management.



Előd Takáts

Principal Economist, Financial Systems and Regulation, Monetary and Economic Department, Bank for International Settlements (BIS)

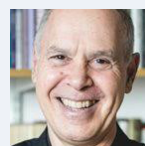
Előd Takáts is a principal economist at the Bank for International Settlements. He has extensive experience in studying how macroeconomic and financial developments interact. Előd is a visiting fellow at the London School of Economics and Political Science which allows him to combine academic and policy work. His policy work has focused on emerging markets, particularly those of central and eastern Europe. Before joining the BIS in 2009, his career at the International Monetary Fund covered several departments and countries, the last one being China. He took part in surveillance and program missions, and in financial sector assessments.



Torsten Thiele

Visiting Fellow, Institute of Global Affairs, LSE and Executive Director, Global Ocean Trust

Torsten Thiele is a sustainable finance and ocean governance expert, drawing on over 20 years experience in project and infrastructure finance. As Visiting Fellow at LSE IGA and Associate at LSE GRI he researches innovative blue finance approaches and ocean policy solutions. Torsten Thiele is Executive Director of Global Ocean Trust, Senior Research Associate at the Institute for Advanced Sustainability Studies, Potsdam and Senior Advisor to the IUCN Blue Natural Capital Financing Facility. Recent publications address blue infrastructure and nature-based solutions, innovative High Seas finance, Blue bonds and deep sea governance.



Peter Trubowitz

Director of the US Centre, LSE

Peter Trubowitz is a Professor of International Relations at the LSE and Associate Fellow at Chatham House. His main teaching and research interests are in the fields of international security and US foreign policy. He also writes and comments frequently on US politics. Before joining the LSE, he was Professor of Government at the University of Texas at Austin. He has also held visiting positions at Harvard, Princeton, University of California at San Diego, Universidad de Chile, Centro de Investigación y Docencia Económicas (CIDE) in Mexico City, and the Beijing Foreign Studies University, where he was the J. William Fulbright Distinguished Lecturer in American Foreign Policy.



Andrés Velasco

Dean, School of Public Policy, LSE

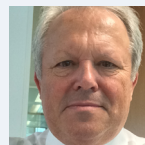
Professor Andrés Velasco is the Dean of the LSE School of Public Policy. He was the Minister of Finance in Chile between 2006 and 2010 and has held professorial roles at the Harvard Kennedy School and Columbia University's School of International and Public Affairs. He was president of the Latin American and Caribbean Economic Association (LACEA) from 2005 to 2007. In February 2006 he received the Award for Excellence in Research from the Inter-American Development Bank. In 2013-16 he was a member of the Global Oceans Commission and during 2015-16 he co-chaired the Global Panel on the Future of the Multilateral Lending Institutions. In 2017-18 he was a member of the G20 Eminent Persons Group. He is the author of nearly one hundred academic articles, several academic books and two novels. He has served as a consultant to the International Monetary Fund, the World Bank, the Inter-American Development Bank, and to governments, central banks and private businesses around the world.



Oliver Walker

Principal, Natural Resources, Vivid Economics

Oliver manages the natural resources practice group and is involved in work across the finance, growth and development and earth observation practice areas at Vivid Economics. Oliver's career as a professional economist spans spells in consulting and academia, where he has held positions at the University of Cambridge and the London School of Economics Grantham Research Institute. His interests include topics in natural resource management planning, infrastructure finance, and regulatory design, with a particular focus on the water sector. He is co-author of *The Rough Guide to Economics*, published by Penguin in 2014.



Anthony Williams

Journalist and Communications Veteran

Anthony Williams is a journalist and communications veteran. He spent nearly three decades with Reuters News Agency, including as: foreign correspondent in France, Switzerland and Germany; German financial editor at the time of the collapse of the Berlin Wall; running Reuters editorial operations in the UK and Ireland; News Editor for Europe, the Middle East and Africa; and Global News Editor, responsible for the agency's text, TV and pictures operations worldwide. He left Reuters in 2006 and joined the Communications Department of the European Bank for Reconstruction and Development (EBRD), where he was appointed Director, External Communications.

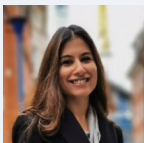


James Zhan

Senior Director of Investment and Enterprise, UNCTAD

James X. Zhan is senior director of investment and enterprise at UNCTAD. He is editor-in-chief of both the UN World Investment Report and Transnational Corporations Journal. He chairs the Governing Board of UN Sustainable Stock Exchanges Initiative. He has provided policy advice to over 100 governments (including heads of states and cabinets) and parliaments. He led the formulation of a new generation of investment policies and the establishment of the World Investment Forum. He is chief strategist for the World Association of Investment Promotion Agencies. He has held several academic advisory positions, including Cambridge University, Columbia University, Cornell University and Oxford University.

LSE Maryam Forum student leaders



Mahima Andrew

Student Leader, Maryam Forum Secretariat

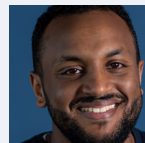
Mahima is a second year MPA student at LSE. Originally from India she has worked for over 9 years across policy design and implementation strategy focussed at healthcare and micro finance in the developing world. She has been instrumental in increasing penetration for financial products through collaborations with international bodies such as USAID.



Doménica Avila

Co-Lab: Human Mobility

Doménica is a second year MPA student at the LSE. Originally from Ecuador and with a background in Economics. She has experience on Health, Education research and strategic planning. She has been a student activist and now advocates for minorities rights. Founder of projects to support Venezuelan immigrants in Ecuador.



Hassan Gali

Co-Lab: Global Emergencies and Responses

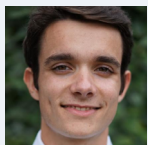
MPP, LSE Alumnus currently working in The Front Office of the Economics, Policy and Governance Department at the EBRD. He is a Medical Doctor by background, and graduated from the University of Medical Sciences and Technology in Khartoum practising in the UK since 2010. He holds an MSc in Public Policy and Global Health from Durham University,



Benjamin Grazda

Co-Lab: Democracy and Disinformation

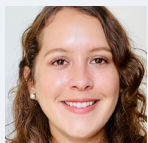
Ben Grazda an MSc in Conflict Studies student in the Department of Government. He has worked in the US Senate and spent four years working for humanitarian organizations in Kenya, Nigeria, Iraq, and Syria. He's interested in working collaboratively with peers and practitioners from around the world in an interdisciplinary setting to develop solutions for the most pressing and complex problems facing us today.



John Gordon

Co-Lab: Rethinking global finance
and the global financial architecture

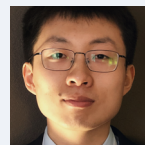
John Gordon is Franco-British student who recently completed his BSc Philosophy, Politics and Economics at the LSE, with a thesis on the determinants of innovation in advanced capitalist democracies. He is now studying the MSc Economics, specialising in monetary economics. He developed a keen interest in international affairs while growing up in Geneva and was active in the university's United Nations society.



Karina Rodriguez

Co-Lab: Innovation and inclusive growth

Karina is a second year MPA student at the LSE. Originally from Peru, she has worked at several institutions within the Peruvian government, such as the Ministry of Transports and Communications, the Authority for Reconstruction and, most recently, the Ministry of Economics and Finance. She has also worked as an external consultant for the World Bank.

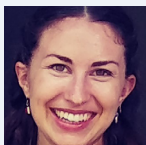


Jintao Zhu

Co-Lab: Innovation and inclusive growth

Jintao Zhu is currently a student of BSc Philosophy, Politics and Economics at LSE. He has served as the Editor-in-Chief of the LSE Undergraduate Political Review (LSEUPR). He is also the Chair for the Political Philosophy Student Research Committee of the International Association for Political Science Students (IAPSS). His research interest is on nationalism, international finance and value theories.

LSE Maryam Forum student members



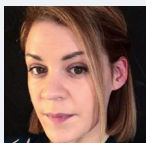
Katie Alesbury

Katie is a MPP student at the LSE. Katie's mission is to contribute to the long-term health of communities and environments. In 2013 she founded the first and only food redistribution organisation in Nicaragua. Comamos Juntos (Eat United) tackles food waste and food insecurity by working directly in and alongside local communities.



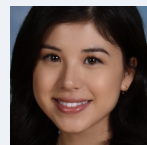
Santina Bevacqua

Santina is a MPP student at the LSE. She has an academic background in Economics and 6 year of working experience in Consulting Company, working with primary European banks on projects related to new technologies (AI, APIs) and regulations (EMIR, PSD2, Open banking, AML).



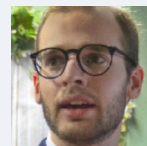
Lisa Carroll

Lisa is a Social and Environmental Masters student at CAU Kiel, Germany. Originally from Ireland she has a background in politics and experience in international development working with an umbrella organisation representing the sector to the Irish government.



Paulina Chan

Paulina is a first-year master's student in the LSE-Fudan double-degree programme in International Social and Public Policy, for which she is also the academic representative. Originally from Canada, where she recently completed a bachelor's degree with a double-major in Political Science and East Asian Studies at the University of Toronto.



Adrian Fossaceca

Adrian is a first-year MPA in Economic Policy candidate at the LSE. Originally from Venezuela he has research experience in macroeconomic policy and development for Latin America, as well as for oil-dependent economies.



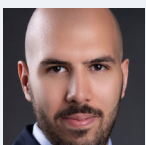
Fernanda Garcia Sanchez

Fernanda is a MPP student at the LSE. She has a background in political studies and work experience in public affairs, international trade and strategic communication consulting in Mexico where she was engaged in a wide array of sectors, from electoral political analysis, energy policy to copyright and urban mobility.



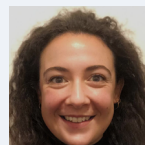
Omnia Hamza

Omnia is a Global Health Policy Masters student at LSE. Originally from Sudan, she has been working at the federal ministry of health in Sudan in the Global Health Directorate. She is a global health advocate, passionate about strengthening health systems in LMICs.



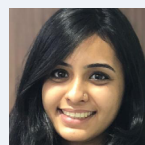
Mohamad Hany Nassar

Mohamed is a MPA student at the LSE. Originally from Egypt he has a background in engineering and finance. He has worked in recruitment consulting and his research interests include global public debt sustainability.



Asha Niall

Asha is a MPP student at the LSE. She has a background in environmental policy and is a civil servant with experience in disaster management governance and coordination, climate change adaptation and resilience policy, and legislative and regulatory reform.



Muskaan Sofet

Muskaan is a MPA student at the LSE with a background in economics. She has worked with several non-governmental organisations in the education sector. She has also worked with organisations in India to encourage more students to join the policy circuit. Currently she is researching on patterns of democracy and their implementation.

The Maryam Forum: Transformative Leadership for an Uncertain World

The problem we're trying to solve

The world faces multiple, urgent and complex challenges on an unprecedented scale. From climate change to sluggish global growth, a changing financial architecture, to human mobility and disinformation, courageous leadership is needed to navigate our future. Yet, many parts of the world are characterised by conflicting national interests, a lack of accountability and by corruption. Against this backdrop, the COVID-19 pandemic has shaken the world and revealed a widespread lack of transparent, inclusive and accountable leadership. The transformative leadership we urgently need must be grounded in evidence and exercised by leaders from and representing the full breadth of our global communities. For it to emerge, we need stronger links between research and policy, alongside an ecosystem that encourages meritocracy, accountability and inclusion.

From rulership to leadership

The Maryam Forum is a programme aimed at accelerating the development of exactly this kind of leadership by:

- Establishing policy-relevant research goals set by a unique platform of academics, policy makers, business leaders and students;
- Integrating research into policymaking;
- Offering a range of policy options to inform policy makers and societies;
- Developing a values-based ecosystem with meritocracy, inclusion, and accountability to foster the emergence of a new generation of leaders.

Co-Labs: a challenge-driven coalition of partners

Key to delivering on the Forum's ambition is a series of 'Maryam Co-Labs'. These year-round working groups develop and seek to implement innovative research-based policy solutions to six global challenges critical to achieving the 2030 Agenda for Sustainable Development, namely: Global Emergencies and Responses; Innovation and Inclusive Growth; Rethinking Global Finance

and the Global Financial Architecture; Human Mobility; Democracy and Disinformation; Climate and the Oceans.

To foster a better leadership ecosystem, the Co-Labs each comprise a coalition of representatives of the Forum's different partner groups. By unlocking the power of collaboration across diverse perspectives, the Co-Labs aim to co-create the most effective strategies and approaches that leaders might deploy to address global problems. Membership of each Co-Lab includes participants from both developed and emerging regions, characterised by diversity. The Co-Labs are supported by deep engagement with LSE students and faculty, with students from LSE's School of Public Policy playing a key role throughout – including by conducting and supporting research.



Conference organisers



Contributors:

Mandeep Bains

Erik Berglof

Nadine Clarke

Nina Loncar

Geri Miric

Piroska Nagy-Mohácsi

Carolina Stern

Keith Tritton

Anthony Williams

Design & Art Direction:
christian@cgcreate.co.uk

Thank you for attending the LSE Maryam Forum Conference 2020. Recordings of all of the sessions will be made available after the event so you can watch any of those you missed. We will be sharing news and updates on our collaborative work and future Maryam Forum events with all registered participants. If you would like to find out more about the opportunities to get involved in the Maryam Forum, please contact: Iga.Maryam.Forum@lse.ac.uk

