

# THE GLOBAL DISTRIBUTION OF ECONOMIC ACTIVITY: NATURE, HISTORY, AND THE ROLE OF TRADE<sup>1</sup>

May, 2017

Vernon Henderson  
Tim Squires  
Adam Storeygard  
David Weil

## Abstract

We explore the role of natural characteristics in determining the worldwide spatial distribution of economic activity, as proxied by lights at night, observed across 240,000 grid cells. A parsimonious set of 24 physical geography attributes explains 47% of worldwide variation and 35% of within-country variation in lights. We divide geographic characteristics into two groups, those primarily important for agriculture and those primarily important for trade, and confront a puzzle. In examining within-country variation in lights, among countries that developed early, agricultural variables incrementally explain over 6 times as much variation in lights as do trade variables, while among late developing countries the ratio is only about 1.5, even though the latter group is far more dependent on agriculture. Correspondingly, the marginal effects of agricultural variables as a group on lights are larger in absolute value, and those for trade smaller, for early developers than for late developers. We show that this apparent puzzle is explained by persistence and the differential timing of technological shocks in the two sets of countries. For early developers, structural transformation due to rising agricultural productivity began when transport costs were still high, so cities were localized in agricultural regions. When transport costs fell, these agglomerations persisted. In late-developing countries, transport costs fell before structural transformation. To exploit urban scale economies, manufacturing agglomerated in relatively few, often coastal, locations. Consistent with this explanation, countries that developed earlier are more spatially equal in their distribution of education and economic activity than late developers.

**Keywords:** Agriculture, physical geography, development

**JEL Codes:** O13, O18, R12

---

<sup>1</sup> We thank Alex Drechsler, Joshua Herman, Andrew Jiang, Young Min Kim, Patrick Mayer, Kevin Proulx, Nicholas Reynolds, Sameer Sarkar, Yang Shen, and Sanjay Singh for excellent research assistance, and Treb Allen, Marcus Berliant, Will Masters, and seminar/conference participants at Berkeley, University of Copenhagen, George Mason, Iowa State University, ITAM, LSE, UCSB, UMass-Boston, Washington University, Williams, The World Bank, University of Zurich, the Federal Reserve Bank of Philadelphia/NBER Conference on Macroeconomics Across Time and Space, the Brown University conference on Deep-Rooted Factors in Comparative Economic Development, and the Stanford Institute for Theoretical Economics conference on New Directions in Economic Geography for helpful comments and suggestions. Storeygard thanks Deborah Balk, Marc Levy, Glenn Deane and colleagues at CIESIN for conversations on related work in 2004-2006, and LSE and UC-Berkeley for hospitality while this research was conducted. The authors acknowledge the support of the World Bank's Knowledge for Change Program and a Global Research Program on Spatial Development of Cities funded by the *Multi Donor Trust Fund on Sustainable Urbanization* of the World Bank and supported by the UK Department for International Development. The views in this paper are solely the responsibility of the authors and should not be interpreted as reflecting the views of Amazon.com or of any other person associated with Amazon.com.

## I. Introduction

The most obvious determinant of the spatial distribution of economic activity is geography: the degree to which locations are amenable to human habitation, output production, and the transport of goods. These geographical characteristics are frequently referred to as “first nature,” and their effects are well studied in the literature.<sup>2</sup> But while the characteristics that constitute first nature are for the most part fixed over time, the effect that these characteristics have on the concentration of economic activity may alter in response to technological change (e.g., air conditioning and irrigation) as well as structural transformation (e.g., the Agricultural and Industrial Revolutions). Changes over time in the roles of geographic characteristics have not been well studied.

In this paper, we take a systematic approach to analyzing changes in the effects on the density of economic activity of specific first-nature characteristics, focusing on what we believe to be the two areas in which the importance of such characteristics has changed the most. These are, first, the suitability of a region for growing food and, second, the suitability of a region for engaging in national and international trade. We establish several new and surprising facts. First, we show that the weight attached to the suitability of a region for growing food has declined over time, while the weight associated with suitability for trade has risen. Related to this first observation is a second: in developed countries, where agriculture represents a relatively small part of the economy, the location of overall economic activity is driven much more by factors determining agricultural productivity than trade suitability, compared to developing countries, where agriculture is a much larger component of GDP or the labor force. Many of us familiar with individual developed countries think of the strong role that location on lakes or

---

<sup>2</sup> Examples of this approach include Nordhaus (2006), and Nordhaus and Chen (2009), who look at the effect of a suite of geographic factors using coarse subnational data; Masters and McMillan (2001) who consider climate in a cross-country growth model and provide a related historical explanation; Mellinger, Sachs, and Gallup (2000) and Rappaport and Sachs (2003), who investigate the role of coasts, for both productive and amenity reasons; and Nunn and Puga (2012), who look at the effect of terrain ruggedness. See also Gennaioli, La Porta, López-de-Silanes, and Shleifer (2013, 2014), who regress subnational income and growth on geographic factors along with institutions, population and human capital measures, for a sample that covers much of the world but largely excludes Africa. Related work in the trade literature (e.g. Allen and Arkolakis 2014) have used a more structural approach and focused on the United States, where data on subnational trade flows are available.

rivers, and access to the coast played in their historical evolution. However we show explicitly that all the trade-related variables play a much more important role in today's developing countries. Finally, we find that countries that transformed and agglomerated into cities earlier also have greater spatial equality in the distribution of economic activity generally, and in educational attainment specifically, than those that agglomerated late.

Tying these observations together are two forces: technological change and persistence. Over the past several centuries (the period of time in which most of the agglomeration in the world has taken place), the link from ease of food production to concentration of economic activity has attenuated both because an increase in agricultural productivity has ensured that food represents a much smaller fraction of the consumption basket today than in the past, and because costs of transporting food have fallen dramatically. Thus on both the production and consumption sides, there is less need for most of the population to live near where food is produced within a country. Similarly, suitability of a region for international trade via first nature characteristics such as location on coasts, navigable rivers, or natural harbors, has become more valuable as opportunities to reap gains from trade have increased over the last 150 years.<sup>3</sup> We show below that there were important differences in the relative timing of increased agricultural productivity and reductions in transport costs in early vs. late developing countries.

Interacting with these changes in technology is persistence, which in turn results from urban agglomeration, the great force shaping the distribution of economic activity beyond first nature. It is precisely this persistence that also allows us to understand how the weights on geographic factors have changed over time, even though the highly detailed data on the spatial distribution of economic activity that we have access to does not have a usable time dimension. Specifically, although we can't observe the detailed locations of historical agglomerations, we can sort countries by their degree of structural transformation and urbanization at a particular

---

<sup>3</sup> The historical changes in agricultural productivity and transport costs on which we focus are hardly the only ways in which technological change and economic development have impacted the spatial pattern of population. To mention three others: first, income growth has shifted the relative importance of natural characteristics associated with productivity and those associated with amenity; second, the costs and benefits of agglomeration have also changed over time, for example due to improved medical and public-health technologies (which lowered the costs) and the use of more complex production processes (which raised the benefits); third, changes in military technology have changed the defensive value of particular geographic features.

point in time, and then rely on the fact that in those countries that agglomerated early, the current distribution of economic activity reflects the persistent effect of technology at the time of agglomeration. Several economic studies have examined such persistence in more localized settings (i.e. specific regions, or in response to particular shocks). Our paper is the first to examine, and take advantage of, such persistence at a global scale.<sup>4</sup>

Our findings are relevant to current debates regarding regional development policy. Efforts by national governments and international advisors to encourage the growth of hinterland cities in developing countries seem to reflect in part an implicit reference to the experience of developed countries. For example, starting in 2005, Chinese planners set a vision for further expanding the highway network with intentions of “Developing the West” and “Revitalizing the Northeast.” Under the 12th 5 year plan (2010-2015) this involved 66,000 kms of national or provincial roads in the poorest regions, with even more planned in the 13th 5 year plan.<sup>5</sup> Similarly, for Sub-Saharan Africa, some economists within the World Bank view secondary city development as a key to economic growth and poverty reduction, and this view is reflected in strategic plans for several countries.<sup>6</sup> To the extent that the spatial distribution of population in rich countries reflects the persistence of patterns established under old technology and institutions, rather than an efficient response to conditions prevalent today, such efforts are to some degree misplaced.

Although our primary interest is in studying the interaction of nature with history, we begin our empirical analysis by examining the overall predictive power of first-nature characteristics for the distribution of economic activity in modern cross-sectional data. Our primary dependent variable is light at night, as observed from from satellites, aggregated to

---

<sup>4</sup> Motamed et al. (2014) estimate the year in which a given half-degree grid cell passed various urbanization rate thresholds. Their urban and rural population data are gridded estimates for the past 2,000 years from Klein Goldewijk et al. (2011). Motamed et al. regress the date of urbanization on a cultivation suitability index, distance to coast, a river navigability proxy, frost, and elevation, finding significant predictive power for all of these variables except elevation. We view their work as complementary to ours, in that they examine the determinants of early urbanization and we examine the effect of early urbanization, along with other factors, on outcomes today.

<sup>5</sup> The 2005 *National Highway Network Plan* published by the Development Research Center of the State Council sets the vision. The year 2016 saw a 14% increase over 2015 in road investments in the west (Ministry of Transport statistics).

<sup>6</sup> On Sub-Saharan Africa, for a sense of some views in the World Bank which are played out in concept memos and internal Bank reports see Christiaensen and Kanbur (2016).

roughly 240,000 quarter degree (longitude/latitude) grid cells. Although as discussed below, within-country variation in lights is primarily driven by variation in population density, we prefer the lights measure to available measures of population density from global population datasets (discussed in Section 3), because lights data are sampled at uniformly high spatial resolution across countries (Henderson, Storeygard, and Weil, 2012). We also consider as an outcome the spatial distribution of skills within countries (Gennaioli et al. 2013). Our measures of first nature include characteristics of the climate, land surface, natural water bodies, and plant life (temperature, precipitation, elevation and ruggedness, coasts, navigable rivers, natural ports, and biomes). We are particularly interested in the relative importance of characteristics related to suitability for trade (such as being located near a natural harbor or the coast or on a navigable river or major lake) versus those associated with agricultural productivity.

A significant advance we make over much of the current literature is that we focus on the distribution of activity *within* countries. The most important reason for doing this is that economic density of a location, as well as our proxy for it, light density, is a function of both population density and income per capita. Focusing on within-country variation reduces the variance of income per capita, so that lights variation is driven primarily by the population distribution. Additionally, institutions (for which countries are a convenient proxy) clearly matter for both income and population density. While geographic factors may well play a significant role in shaping institutions, sorting out the effect of institutions versus geography on the global distribution of economic activity in cross-country data is extremely difficult, if not impossible. By controlling for institutions and other national characteristics through country fixed effects, we are capturing direct first nature effects on the distribution of resources within countries. The weights on geography that we estimate are thus not biased by any effect of geography on national level institutions or policies (such as trade policy). Our approach of including country fixed effects removes some geographic variation, but we show that a very large amount of usable variation remains.

The rest of this paper is organized as follows. Section 2 presents some of the historical data that motivates our approach, outlines our conceptual framework, and describes a model which is fully specified in Online Appendix B. Section 3 describes our data on lights and

physical geography. In Section 4 we first discuss the interpretation of the lights data, and then consider the explanatory power of geographic factors to predict global variation in observable lights, both overall and net of country fixed effects. Section 5 shows empirically the heterogeneity between early- and late-developing countries, as well as a pattern of spatial inequality within countries consistent with our framework. Section 6 concludes.

## **II. History and Conceptual Framework**

The effect of physical geography on human settlement depends on the state of technology and the structure of the economy. When these change, the values attached to specific geographical characteristics change as well. There are numerous technological and economic changes whose effects one could trace over time. As discussed above, we think that the two that have been most important during the history of urbanization over the last few centuries are, first, the rise of labor productivity in agriculture, and second, the decline in transport costs and concomitant opening of possibilities for trade both within and between countries. In Section 2.1 we establish key facts about such changes and in Section 2.2 we discuss a conceptual framework.

### *II.A. Historical Background*

#### *Urbanization and Food Production*

Urbanization has been driven, above all, by rising labor productivity in agriculture, due in turn to both technological change and the substitution of other inputs for human power. Combined with low price and income elasticities of demand for food, this rise in labor productivity has produced an enormous drop in the fraction of workers found on farms. Prior to this transformation, population was necessarily diffuse, because of declining marginal product of labor when applied to a fixed quantity of land, and population density was tightly linked to the quality of agricultural land. Differences across countries in the timing of this change in agricultural productivity -- for example, the British Agricultural Revolution starting in the 17th century and the Green Revolution in many developing countries after World War II -- have been

linked to corresponding differences in the timing of urbanization (Desmet and Henderson, 2015).

Allen (2000) finds that output per worker in English agriculture increased 88% between 1600 and 1800. Correspondingly, the fraction of the labor force engaged in agriculture fell from 69% to 35% over the same period, and the fraction living in cities rose from 10% to 29%.<sup>7</sup> Although in later episodes of urbanization, imports played a role in easing the food constraint, this was not the case in Europe in this period. According to Allen, in both the Netherlands and England, the two European regions most reliant on food imports, domestic production accounted for at least 90% of consumption through 1800. Similarly in China, at a roughly similar date, long-distance trade in grain amounted to only 8 percent of national consumption (Shiue and Keller, 2007).

Even in the modern world, food consumption in most countries is overwhelmingly supplied from domestic farming, and in developing countries, a large fraction of the labor force is required to produce that food, resulting in a low level of urbanization. Gollin, Parente, and Rogerson (2007) report that among developing countries in 2000, 55% of employment was in agriculture, with only a small part of that devoted to non-food or export crops, while among the group of low-income countries, net food imports accounted for only around 5% of total calorie consumption. Looking at developing countries over the period 1960-2000, they show a very strong statistical relationship between increases in labor productivity in agriculture and declines in the agricultural share of the labor force, although this cannot necessarily be interpreted as a simple causal relationship. In the quantitative model they construct, differences in agricultural productivity growth are key in explaining the differential timing of takeoff across countries.

Bairoch (1988, Table 29.2) reports that among developed countries, the level of urbanization was 24% in 1880, a level that would not be reached in the “Third World” for another 85 years. Relatively consistent data begin in 1950 (United Nations, 2014). In that year, urbanization rates were 56.6% in high income countries, 19.8% in upper-middle income countries, 17.9% in lower-middle income countries, and 9.0% in low income countries. By

---

<sup>7</sup> Using a 5,000 person definition of cities.

2010, the rates for these groups were 79.3%, 58.8%, 37.7%, and 28.5%, respectively.<sup>8</sup> Thus in the period after 1950, much of the developing world has been proceeding down a path of urbanization, often starting from a very low level, that the developed countries traversed at a much earlier point in time. Using a city cutoff size of 10,000, Jedwab and Moradi (2016) report that in a group of 39 sub-Saharan African countries, the urbanization rate in 1960 was one percentage point higher than that observed in Europe in 1700 (9% vs. 8%).

### *Persistence of Cities*

The persistence of cities in terms of both their locations and their relative sizes has been well studied, although there remains active debate about the relative importance of different causes, among them natural advantages, long-lived capital, location-specific knowledge accumulation, and history as an equilibrium coordinating device. Bleakley and Lin (2012) show that US cities whose locations were initially determined by particular geographical characteristics did not experience relative decline even when those geographical characteristics were no longer of value. They take this as evidence of path dependence. Jedwab, Kerby, and Moradi (2017) similarly show that locations of population agglomerations in Kenya and Ghana were persistent even after the factors that initially led to their establishment (such as colonial railroads and the presence of European settlers) disappeared. Davis and Weinstein (2002) find persistence of relative city sizes in Japan even after the shock of American bombings in World War II, and similarly find persistence in regional densities in Japan over very long historical periods. Their preferred explanation puts heavy weight on persistent geographic advantages.

Eaton and Eckstein (1997) examine the 40 largest cities in France (1876-1990) and Japan (1925-1985) and find a very high degree of persistence in rank over the period of rapid industrialization and urbanization. Black and Henderson (2003) and Duranton (2007) similarly demonstrate the relative stability of the city size ordering and lack of downward mobility, in

---

<sup>8</sup> Population shares in 1950 were .301, .338, .281, and .077, respectively, while in 2010 they were .183, .344, .352, and .117. However, the composition of the different country groups was not constant over time. World urbanization rose from 29.6% to 51.6% between 1950 and 2010.



terms of population or employment, in the United States and France over the twentieth century.<sup>9</sup>

Finally, looking beyond city size rankings, a related point is that once a location begins to be urbanized, it usually stays that way. To see this, we consider the 119 European cities in 10 modern European countries in the year 1500, in the dataset constructed by Wahl (2016). Despite five centuries of war, redrawing of borders, and massive structural change, only 15 of the 119 cities have fewer than 50,000 people today. We take this as evidence of persistence.<sup>10</sup>

### *Transport Costs*

Transport costs have fallen over the last several centuries, most dramatically over the last 150 years, because of technological change, investments in infrastructure, and institutional changes such as reductions in internal and external tariffs and improvements in market institutions. The decline in trade costs had two effects that are relevant in our context. First, it further freed people from the necessity of living near where the food they eat is grown. Second, it raised the desirability of geographic characteristics that specifically benefit from trade, such as being on a coast or a navigable river.

Prior to the industrial revolution, bringing food from farms to cities was expensive almost everywhere in the world. In early modern Europe, Dittmar (2011) writes, “Transportation costs – especially for heavier products and overland transport – were exceedingly high. Grain transported 200 kilometers overland could see its price rise by nearly 100 percent. While the early modern period saw major developments in the international trade in grain, most cities remained heavily reliant on the provision of foodstuffs from a within a circle of 20 to 30

---

<sup>9</sup> The historical presence of cities also has a persistent effect on economic development and population density at the regional level. Chanda and Ruan (2017), looking at subnational regions and conditioning on both country fixed effects and a suite of geographical measures, find that urban population density in 2000 (urban population divided by land area) is strongly predicted by urban population density in 1850 and the existence of a city in a region in that year. Similarly, Wahl (2016) finds the presence of cities on major trade routes as of the year 1500 predicts GDP per unit area in NUTS-3 regions in Europe.

<sup>10</sup> Going further back in time, Michaels and Rauch (forthcoming) do find that as a result of the cessation of urban life in England at the time of the collapse of the western Roman empire, there was a “resetting” of the urban network, with the pattern of city locations that emerged several centuries later reflecting then-contemporaneous trade and transport conditions. In France urban life did not collapse with Roman withdrawal, and Roman towns persisted. However, we do not view this episode as germane to urbanization over the last several centuries, during which no similar urban collapse has occurred.

kilometers which avoided heavy transport costs and the risks of reliance on foreign supplies.” Land-based goods, such as food and fuel, represented a large fraction of the consumption basket, and prices for these goods (such as bread) rose with city size, because of the need to transport them over greater distances.

Bairoch (1988) calculates that transporting grain by animal-drawn cart, even excluding indirect costs such as road maintenance, implied a doubling of prices at a distance of 260 kilometers. Shiue and Keller (2007) conclude that on the eve of the industrial revolution, shipping costs and the efficiency of institutions that supported trade in China and Western Europe were roughly comparable.<sup>11</sup>

Even as the industrial revolution picked up speed, transport could be very slow and expensive. To give an example, in 1817, freight transport from Cincinnati to New York City, via Ohio River keelboat to Pittsburgh, wagon to Philadelphia, and wagon plus river to New York, took 52 days. In 1816, turnpike transport cost 30 cents per ton-mile (in that year, the price of wheat in Cincinnati was \$22.64 per ton).<sup>12</sup> However starting later in the 19th century, transport costs fell dramatically. The ratio of transport costs to New York relative to farm-gate prices in Wisconsin and Iowa fell from roughly 80% in 1870 to 20% in 1910 (Williamson, 1974). The price of ocean shipping fell by 0.88% per year in the first half of the 19th century and by 1.5% per year in the second half (Harley, 1988). In the US, real railroad freight costs per ton-mile fell by  $\frac{2}{3}$  between 1880 and 1940, and by the same factor between 1940 and 2000 (Redding and Turner, 2015).

### *Relative Timing*

In today’s developed countries, structural transformation began well before the major declines in transport costs (Desmet and Henderson, 2015). By contrast, among developing countries with low productivity agriculture, by 1950 and in many cases much earlier, transport costs had fallen with the building of colonial rails and roads as well as the use of trucks (Jedwab

---

<sup>11</sup> We are of course aware of examples of cities that were fed by distant agricultural hinterlands dating much further back in history, the most prominent example being Rome.

<sup>12</sup> Taylor (1951), Appendix A, Tables 2 and 3; Berry (1943).

and Moradi, 2016; Jedwab, Kerby and Moradi, 2017). Donaldson (forthcoming) explores the effect of the 67,247 km railroad network constructed in British India between 1853 and 1930, finding that it greatly reduced freight costs compared to existing road, river, and coastal transport networks, and similarly greatly reduced interregional price differentials for traded goods. Despite the presence of this transport network, however, India was only 17.0% urban in 1950 and 30.9% in 2010.<sup>13</sup>

This point can be made even more concrete by looking directly at transport costs in Africa, the world region in which such costs are highest, and urbanization lowest. Teravaninthorn and Raballand (2009) show that while internal transport costs in Africa today are indeed higher than in developed regions such as France and the United States, the difference is only in the range of a factor of 2 or 3. Given the enormous decline in transports costs in developed regions over the last 150 years, this means that transport costs in Africa are far lower than they were in developed countries during their periods of rapid agglomeration. In a similar vein, Limão and Venables (1999) compare the cost of shipping a standard 40-foot container from Baltimore to coastal vs. landlocked countries in Africa. Shipping to a landlocked, low income West African country is 64% more expensive than shipping to a coastal country of the same type, reflecting the well-known toll of bad roads and rails in Africa. But again it is notable that the base used in this comparison (the cost of ocean shipping) is extremely low by historical standards. Even with their high additional costs, inland areas of Africa are connected to world markets at costs that are low by historical standards. Thus urbanization is taking place in a relatively low transport cost environment in comparison to early developers.

## *II.B. Model*

In the presence of geographical persistence, historical changes in the economic value of

---

<sup>13</sup> Gollin and Rogerson (2016) report ratios of maize prices in Kampala, Uganda to farm-gate prices in 2002 that are quite similar to the data for the US (New York vs. Iowa and Wisconsin) for 1870. But while the US population was 25.7% urban in 1870, the urbanization rate in Uganda in 2002 was only 12.3%. US data are from the census, using a 2,500 person definition. Uganda Bureau of Statistics (2006) defines urban areas as gazetted cities, municipalities, and town councils, without specifying a population cutoff. The 1991 census specified a cutoff of 1,000 people, and in that year urbanization was 9.1%.

different natural characteristics can be inferred from the modern mapping from characteristics to density. In Online Appendix B, we develop a model showing how the relative timing of the two key historical changes we focus on -- rising agricultural productivity and falling transport costs -- can influence the spatial distribution of population.

In the model, a country has two regions, which we label coast and hinterland, and two sectors, food and manufacturing, where the latter occurs in cities and is subject to agglomeration economies and congestion. Demand for food is income and price inelastic. As in many New Economic Geography (NEG) models, labor is perfectly mobile, land is perfectly immobile, and inter-regional trade in manufactured goods is costly. And as in NEG models with scale economies, there are multiple equilibria in certain regions of parameter space. Technological improvements come in two forms: higher labor productivity in agriculture and lower costs for transporting goods. Consider a developed country today that experienced the agricultural revolution before much of the dramatic drop in transport costs. Higher agricultural productivity released farmers into manufacturing cities, but since transport costs were high, a city developed in each of its two regions, so farmers and cities could trade easily within each region. Later when transport costs fell and inter-regional trade was less costly, in key regions of parameter space where net urban scale effects are exhausted or net diseconomies have set in, interior and coastal cities both persist as stable equilibria. Hence manufacturing cities are found in both coastal and hinterland regions, driven by initial endowments of agriculturally suitable land.

In contrast, consider a developing country today. Since transport costs fall before structural transformation, most labor remains in farming, leaving scale economies in any industrial city unexhausted. Lowered transport costs allow concentration of manufacturing production in one region, whether the region has a modest productivity advantage (i.e. by being on the coast) or not, to take advantage of urban scale, as manufactures can be cheaply traded across regions. Once structural transformation starts in these countries, the initial agglomeration persists and grows, with hinterland city development not emerging as an equilibrium (the equilibrium with just one city is 'stable' with respect to population perturbations as long as its urban net diseconomies are not extreme).

In today's developed countries, cities are thus scattered across historically important

agricultural areas; and, as a result, there is a relatively higher degree of spatial equality in the distribution of resources within these countries. By contrast, in today's developing countries, cities are concentrated more on the coast where transport conditions, compared to agricultural suitability, are more favorable. In practice (although this is not encompassed in our model), this has been enhanced by the decline in *international* transport and communication costs which have led to globalization and the enormous expansion in international trade. Developing countries have less urban activity in the hinterlands and a higher degree of spatial inequality in the allocation of resources. As these countries move further along the path of structural transformation, even greater proportions of population may agglomerate in coastal cities. Of course, to the extent that some developing countries such as India and China did have substantial numbers of interior cities in 1500, they would show a greater role for agricultural factors and less for trade factors than other countries with fewer (or less persistent) major ancient cities. For example Chandler (1987) records 8 Chinese and 6 Indian interior cities with a population of more than 60,000 in 1500. In sub-Saharan Africa, no cities crossed that threshold by 1500, and only 4 interiors ones did by 1850.

While we highlight technological change in transportation and agriculture as the main drivers of change in the spatial distribution of economic activity, it is clear that several other forces have also been at work, often differentially affecting early and late agglomerators. Developing countries have on average spent a smaller share of their recent history as democracies, and that may induce urban concentration in one large city, typically the national capital where leaders can satisfy a key support base, especially in small countries (Ades and Glaeser, 1995; Henderson and Wang, 2007). Democratization introduces regional representation and demands from hinterland areas for a greater share of resources (Karayalcin and Ulubasoglu, 2010). To the extent that mineral resource deposits are not restricted to highly accessible locations, they have the potential to induce dispersion. If exploiting these resources is labor intensive in poorer countries, this would encourage more interior towns in developing countries. The urban sector itself has been subject to technological change increasing the importance of agglomeration in knowledge-intensive service sectors, for example, and decreasing the costs of congestion.

### III. Data

In order to consider these ideas empirically, we need measures of economic activity and several components of physical geography, all available on a global scale. Our proxy for economic activity is night lights. Unlike Henderson, Storeygard and Weil (2012) and most other quantitative work on lights, we use the radiance-calibrated version of the data (Elvidge et al. 1999; Ziskin et al. 2010). In normal operations, the light detection sensor is very good at detecting low levels of light in small cities. However, the strong amplification that enables this detection also saturates the sensor in the most brightly lit places, including the centers of most of the largest 100 cities in the United States, so that their values are top coded. The 2010 Global Radiance Calibrated Nighttime Lights dataset we use combines the high amplification regime for low light places with a lower amplification regime for more brightly lit places. Thus all topcoding is removed, with minimal loss of information about low light places. The lights data are distributed as a grid of pixels of dimension 0.5 arc-minute resolution (1/120 of a degree of longitude/latitude, or approximately 1 square kilometer at the equator).<sup>14</sup>

We use lights as the measure of economic activity because it is measured consistently worldwide at the same spatial scale. Alternatively, we could have considered population. There are three main sources of global population data. Landscan<sup>15</sup> and Worldpop (Stevens et al. 2015) use other geographic data to interpolate population within census geographic units, which has the potential to bias our estimates. The Gridded Population of the World (GPW; CIESIN and CIAT 2005) uses population data exclusively, assuming uniform population density within enumeration units larger than its native (2.5 arc-minute) resolution. On average, this means that population estimates are more heavily smoothed in poorer countries with lower statistical capacity, as well as in more sparsely populated regions. This could also bias our results.

---

<sup>14</sup> Available at <http://ngdc.noaa.gov/eog/dmsp.html> ; following typical practice, we remove light from gas flares as defined by Elvidge et al. (2009).

<sup>15</sup> <http://web.ornl.gov/sci/landscan/>

Of course, spatial variation in lights reflects not only variation in population density but also variation in income per capita. However, given a reasonable degree of population mobility within countries, light variation within countries will primarily reflect the spatial distribution of population. To make this point concrete, we conducted a simple exercise using data on log light density, log population density, and log GDP per capita for sub-national regions, from Gennaioli et al. (2014). Without country fixed effects, the R-squared of a regression of lights on population density alone on the right hand side is 0.530. When income per capita is alone on the right hand side the R-squared is 0.285, and when both are included it is 0.778. By contrast, when the data are demeaned by country, the corresponding R-squareds are 0.775 for population density, 0.128 for income per capita, and 0.808 for both.<sup>16</sup>

Our other variables of interest are reported at several different geographic scales, ranging from 1/120 of a degree to 1/2 degree. For analysis, we convert them all to a grid of 1/4-degree cells, with each cell covering approximately 770 square kilometers at the equator, decreasing with the cosine of latitude.<sup>17</sup> This scale is a compromise between the fine detail observed at the native resolution of several datasets and the computational practicality of coarser cells. It also allows us to be less concerned about spatial autocorrelation than we would be at finer scales, and to reduce true spillovers as well. At this resolution our sample is 242,184 grid cells that fall on land.

To analyze the determinants of variation in economic activity across locations, we define three sets of explanatory variables, which we refer to as agricultural, trade, and base covariates. The base covariates are two variables that arguably affect both trade and agriculture. These are malaria and ruggedness. Malaria affects human ability to live in an area regardless of the economic activities they perform, and ruggedness, a measure of the local variance in elevation

---

<sup>16</sup> We use the most recent year for each country. We drop Germany because different regions have estimates from different years, and Bangladesh and Venezuela because no corresponding lights data are reported. The reported regression uses 1,468 regions from 79 countries.

<sup>17</sup> Variables originally reported for units smaller than 1/4 degree are aggregated with an appropriate function. In the case of continuous variables, values for our grid cells represent the mean or sum of all input cells falling within them, as appropriate. So for example, the night lights measure for each quarter-degree grid cell is the sum of the 900 component raw lights pixels. In the case of categorical variables, we assign the modal value. For variables originally reported in 1/2 degree cells, each 1/4-degree grid cell receives the value of the larger input cell into which it falls.

(Nunn and Puga 2012), increases the cost of both trade and agriculture.<sup>18</sup> The index of the stability of malaria transmission, from Kiszewski et al. (2004), is based entirely on characteristics of local mosquito species and climate predictors of mosquito survival. It is thus exogenous to human settlement patterns.

Our agricultural covariates comprise six continuous variables (temperature, precipitation, length of growing period, land suitability for agriculture, elevation, and latitude) as well as a set of 14 biome indicators. The temperature variable is a long run (1960-1990) average of UEA CRU et al. (2013) based on Mitchell and Jones (2005) and precipitation is the Willmott and Matsuura (2012) measure averaged over the same period. Length of growing period, in days, is from FAO/IIASA (2011). Land suitability is the predicted value of the propensity of a given parcel of land to be under cultivation based on four measures of climate and soil, from Ramankutty et al. (2002).<sup>19</sup>

Elevation, in meters, is from Isciences (2008). While high elevation locations often have poor transport, we believe that once distance to various types of water transport (see below) and ruggedness are controlled for, it is best interpreted as an agricultural variable. In practice, our main result is robust to redefining elevation as a “base” variable. We also control for the absolute value of latitude, which could affect agriculture even net of our climate controls.

Biomes are mutually exclusive regions encoding the dominant natural vegetation expected in an area, based on research by biologists. The distribution of 14 biomes is from Olson et al (2001). We combine “tropical and subtropical dry broadleaf forests” with “tropical and subtropical coniferous forests”, and also combine “tropical and subtropical grasslands and

---

<sup>18</sup> We correct the Nunn and Puga measure to account for the fact that two east-west neighboring cells at high latitudes are closer than two east-west neighboring cells at low latitudes, biasing their measure downward at high latitudes. Applying this corrected measure to the main regression in Nunn and Puga (2012) leads to virtually no change in the point estimate of the variable of interest and a 14% increase in its standard error. We also area-weight the average to follow Nunn and Puga. In practice, area weighting has minimal impact within our small units.

<sup>19</sup> Because several variables are only defined or reported for grid cells containing land, and different datasets have different effective definitions of the land surface, as noted below, values for some variables are imputed (or “grown”) as the mean (continuous) or mode (categorical) of their eight 1/4-degree grid cell neighbors. This process is repeated up to two times until nearly all cells containing land based on our coastline dataset have values for all variables. Between the two iterations, interpolated values assigned to cells containing no land are dropped, so that imputation cannot occur across large water bodies. The only land cells without data following this spatial interpolation process are small islands. Land suitability, biomes, temperature and precipitation are grown twice, and length of growing season is grown once.



savannas and shrublands” with “flooded grasslands and savannas” because each pair is broadly similar, and because the second member of each pair contains less than 1% of cells globally. We exclude areas historically covered by permanent ice from analysis.

Our five trade variables focus on access to water transport. We calculate distances in kilometers from cell centroids to the nearest coast, navigable river, major lake and natural harbor.<sup>20</sup> Our specifications include indicators for the presence of each of these four features within 25 km of a cell centroid, as well as a continuous measure of distance to the coast.

Columns 1 and 2 of Table I report summary statistics for all of these variables.

## **IV. Baseline specification and results**

### *IV.A. Specification*

Figure I shows the variation in (demeaned) lights worldwide. The lights data convey a great deal of information about the relative location of economic activity. More importantly for our purposes, lights map out the location of economic activity *within* countries. As noted above, lights reflect total economic activity, which is a combination of the number of people and the activity level per person. Lights are bright in northern India and the eastern United States, because while economic activity per person is lower in India, population density is higher.

---

<sup>20</sup> Specifically, we calculate great circle distance to the nearest harbor, and Euclidean distances in the Fuller icosahedral map projection to the other features. All available GIS software of which we are aware can only calculate distances to lines and polygons in the plane, and thus requires choosing a projection (see Tobler, 2002, for a critique). No projection preserves distance in general, and many, including the Plate Carrée implicitly used in most economics research, can induce substantial error. Spherical point-to-point distances, in contrast, can be calculated easily in many software packages. Fuller’s icosahedral projection is relatively well-suited for the task, and has not previously been used for such quantitative purposes in any literature of which we are aware. Vector coastline data are from NOAA (2011; “low” resolution), based on Wessell and Smith (1996). The same data are also gridded at 0.5 arc minutes in order to determine the fraction of these 0.5 minute cells in a quarter-degree grid cell that fall on land. Our universe of rivers is those in size categories 1-5 (on a scale of 1-7) of the river and lake centerline dataset from Natural Earth (2012). We restrict to river segments that are navigable, having determined the navigability of each river using a variety of text sources. Lakes data are from the Global Lakes and Wetlands Database produced by the World Wildlife Fund and the Center for Environmental Systems Research, University of Kassel (Lehner and Döll 2004). We restrict consideration to the 29 lakes with a surface area greater than 5,000 square kilometers, having excluded four that were wholly created by dams. Port locations are digitized from US Navy (1953). We restrict to ports defined there as natural harbors.

We emphasize four further points about the lights data. First, some grid cells are partially covered by water or permanent ice. We thus divide the sum of lights on land by the number of constituent pixels (out of 900) that fall on land. Second, as noted above, cell area varies with latitude. However, since the raw lights values reflect *density* of emitted light (light emitted from a pixel divided by pixel area), no further adjustment is required. Third, light assigned to a particular pixel in the raw satellite data may partially reflect “overglow” of light emanating from nearby pixels (Small et al., 2005). This problem is greatly ameliorated by our collapsing of the data into grid cells composed of 900 pixels.

Finally and most importantly, almost 60% of our grid cells emit too little light for the satellite to detect. Since nearly all grid cells contain population and thus presumably emit some level of light, we consider this a censoring problem. The lowest non-zero values are generally interpreted as noise and recoded to zero at the pixel level in initial processing by NOAA.<sup>21</sup> The lowest non-zero value of the sum of lights in a grid cell divided by the number of land pixels in the grid cell is 0.0034. We assign this value to grid cells with all measured zeroes to avoid inducing excessive variation between them and the smallest non-zero values.<sup>22</sup> Figure C1 in the Online Appendix plots the distribution of the dependent variable excluding the bottom code.

The base formulation for grid cell  $i$  in country  $c$  is thus

$$(1) \quad \ln(\text{light}_{ic}) = X_{ic}\beta + \epsilon_{ic}$$

$$\text{where } \text{light}_{ic} = \frac{\sum_{j \in i} \text{light}_{jc} 1(\text{land}_{jc})}{\sum_{j \in i} 1(\text{land}_{jc})} \quad \text{if } \text{light}_{ic} \geq 0.0034$$

$$= 0.0034 \quad \text{otherwise,}$$

$1(\text{land}_{jc})$  is an indicator if a pixel  $j$  is on land,  $\text{light}_{jc}$  is the lights value in pixel  $j$ , and  $X$  is a vector of the 24 other variables in Table I. We also consider the intensive and extensive margins

---

<sup>21</sup> Specifically, in the distributed dataset, 6 percent of pixels have values between 3 and 4, but only .008 percent of non-zero values are less than 3.

<sup>22</sup> Alternatively, we could estimate a Tobit model, which is the traditional way to capture censoring. OLS avoids the Tobit error structure and provides a more intuitive measure of goodness of fit, which is our focus. Estimated coefficients from the analogous Tobit models (with and without country fixed effects) on variables with significant coefficients are exclusively of the same sign and are mostly larger in magnitude.

separately in Online Appendix Tables C1 and C2; results for each margin are consistent with overall results.

We emphasize three further points about equation (1). First, it is a very simple functional form. With such a large number of covariates, a 2<sup>nd</sup> order Taylor series has hundreds of terms, which improves the fit but limits interpretation.

Second, although we start by showing results both with and without country fixed effects, in the remainder of the paper we show only fixed-effects results, since, as discussed above, our interest is on the determinants of within-country variation. Third, both the lights and the physical geography characteristics predicting them are highly spatially correlated. To the extent that this is manifested in spatially correlated errors, we have accounted for this by clustering errors within 3-by-3 squares of grid cells.<sup>23</sup> However, spillover effects of measured explanatory variables are also possible. For example, an area with particularly fertile soil that attracts high population density also provides markets for neighboring areas with worse soils. We have tried to minimize the extent to which this affects our results by aggregating individual light pixels to much larger grid cells, which essentially internalizes agglomeration externalities. Thus estimated coefficients are reduced form, reflecting endogenous agglomeration in addition to raw agricultural and trade effects.<sup>24</sup>

#### *IV.B. Basic results*

Columns 3 and 5 of Table I report coefficients from a regression of our lights variable on the full suite of physical geography characteristics (Equation 1) without and with country fixed

---

<sup>23</sup> Alternatively, Conley (1999) standard errors with a 40 km kernel (similar to queen contiguity) are typically 5-20% larger than these clustered standard errors in our baseline specification, still leaving our coefficients precisely estimated. Since standard errors are not critical to the analysis and Conley errors are computationally intensive we report only clustered standard errors.

<sup>24</sup> Separating these three phenomena (correlated errors, spillovers, and agglomeration) is notoriously difficult (e.g. Gibbons, Overman, and Patacchini 2015). One solution is to focus on the reduced form, adding as covariates the trade and agriculture determinants of neighbors' lights. Another way common in the literature is to add neighbors' lights as a covariate and instrument for them, using second order neighbors' trade and agriculture determinants, assuming spillovers attenuate fully beyond immediate neighbors. Both are impractical in our context as our explanatory variables are nearly all highly spatially autocorrelated, with 60% of them having simple autocorrelation coefficients over 0.95.

effects. The coefficients with and without fixed effects are generally of similar magnitudes and are of the same sign for all covariates. However, the high potential for collinearity limits inference from comparison of many individual coefficients. As an alternative, we plot fitted values from the two specifications in panels A and B of Figure II, holding the color scale fixed, setting the country fixed effects to zero, and de-meaning as in Figure I. The correlation of the fitted values is 0.861. This correlation, as well as a visual comparison of the two figures within continents and countries, suggest that the two specifications provide very similar predictions of which regions have high light density. In other words, the geographic forces that drive the allocation of economic activity within and across countries are similar. Of course, overall predictions of country lights relative to the mean differ somewhat between the two figures in some countries, because their fixed effects are correlated with some aspects of their geography. Thus predicted values for countries in Africa overall look brighter relative to the mean in the fixed effects specification than in the non-fixed effects one because some of the coefficients of geographic variables have changed once African country fixed effects are accounted for. But importantly, the fixed effects change within-country patterns very little.

Coefficients on individual covariates in Table I, columns 3 and 5 are generally in the expected direction. The biomes with the largest fixed effects coefficients are temperate forests and grasslands along with Mediterranean forest. Most biomes have significantly more lights than deserts (the reference biome); tropical moist forest, boreal forests, tundra, and mangroves have significantly less in the fixed effects column. Being near the coast, lakes, navigable rivers and natural harbors is associated with more lights, as is a longer growing season and higher agricultural suitability. Net of growing season, land suitability, and biomes, higher temperatures and lower precipitation are associated with more lights, perhaps in part because of their residential consumer amenity value. In an alternative specification excluding growing season, land suitability, biomes, and country fixed effects (not shown), precipitation has a positive effect overall, as might be expected based on agricultural productivity. When entered in quadratic form (not shown), temperature increases lights at a decreasing rate while precipitation reduces lights also at a decreasing rate (of reduction). Net of ruggedness and coastal distance, higher elevation is associated with more lights.

Columns 4 and 6 report the results of a Shapley decomposition of the regressions with and without fixed effects, following Shorrocks (2013). Each row reports the average marginal contribution of the corresponding regressor to the overall R-squared of the regression, across all permutations of the order in which variables are entered.<sup>25</sup> Land suitability and the suite of biome measures contribute the most in the fixed effects specification, as well as fixed effects themselves, but growing days and temperature also contribute substantially. Individual trade variables add little on average.

Table II reports  $R^2$  and Shapley values by blocks of covariates: base variables (ruggedness and malaria), agricultural variables, trade variables, and country fixed effects. Shapley values and marginal  $R^2$  contributions are very high for agriculture and country fixed effects. While trade variables as a block have low Shapley values and marginal contribution to  $R^2$ , we will see below that they are much more important in late agglomerator countries.

The first column shows that our 24 geographic variables account for 47 percent of the variation in lights globally. We consider it remarkable that such a parsimonious specification can account for so much of the variation in global economic activity, without explicit regard to agglomeration or history. Country-level variation adds relatively little once physical geography factors are accounted for. For example, although country fixed effects account for 35% of lights variation on their own, in column 5, their marginal contribution beyond the geographic variables is just 11 percentage points. Conversely, the geographic factors add 23 percentage points in explaining variation on top of the fixed effects.

## **V. Heterogeneous Specification and Results**

### *V.A. Preliminary evidence*

We start by considering how the residual variation from our baseline specification (Table I, column 5) varies across countries in the context of the literature on the key role of one form of transport potential: coastal access (e.g., Rappaport and Sachs, 2003). We define grid cells as

---

<sup>25</sup> Biomes and fixed effects are each entered as a group (i.e. order within each of these two groups is not permuted).

coastal if their centroid is within 25 km of the ocean or an ocean-navigable river. For each country, we form the average residual for coastal grid cells and subtract the average residual for interior cells. In Figure III we then graph the relationship between each country's residual differential and average years of schooling in 1950, one measure we will later use to partition counties into early and late agglomerators; a similar picture holds for two alternative 1950 measures we will use, urbanization and GDP per capita. In Figure III this residual differential is high for low education countries, compared to high education countries. A regression of the residual differential on education yields a coefficient (s.e.) of -0.342 (0.065) and an  $R^2$  of 0.20. The figure tells us that low education counties have high coastal compared to interior residuals, meaning we have under-assessed the role of coastal location for them by imposing common coefficients.

#### *V.B. Heterogeneous specification*

To consider this pattern more formally, we partition the world into a set of early-agglomerating countries and a set of late-agglomerating countries. We define this partition primarily based on human capital, which allowed farmers to take advantage of higher-yield technologies. Panels A and B of Figure IV plot adult literacy rates over time for a variety of early and late agglomerators, respectively. The pattern is very clear. In panel A, many early agglomerators had literacy rates that were over 50% by the mid-19th century, and in some cases much earlier. This indicates that human capital was relatively abundant before the precipitous decline in global freight costs in the late 19th and early 20th century, also graphed. As discussed in Section 2, freight costs declined rapidly until about 1920 and then levelled out before a further steep reduction after about 1970. In contrast, panel B of Figure IV shows that literacy was quite low in several late agglomerators for which we have data well after the substantial decline in transport costs.<sup>26</sup>

---

<sup>26</sup> International trade is hardly the only form of movement of goods that concerns us -- indeed, the more important movements for the story that we tell are between food growing areas and cities within a single country. However the pattern of internal transport costs looks very similar. (The best data are available on international shipping, but even in these cases, there were additional costs for transport from farms to ports of embarkation.)

We operationalize our human capital measure using national average years of schooling in the adult population in 1950, the earliest year with comprehensive data, from Barro and Lee (2010). We consider two alternative measures indicating early agglomeration: GDP per capita (GDPpc) in 1950 from The Maddison Project (Bolt and van Zanden 2014), and more directly, the urbanization level in 1950 (United Nations, 2014).<sup>27</sup> The three measures are highly correlated and results are similar for all. We focus on the education indicator in the text and figures because we think it is the most consistently measured, but results for all three are shown in the tables. Urbanization relies on definitions that vary substantially across countries, and the problems with cross-country comparisons of historical GDP are well-known.

To distinguish early and late spatially transforming countries, we follow Durlauf and Johnson (1995), letting the data tell us the cutoff at which the overall unexplained variance, summed across the “early and “late” samples, is minimized. In general, we estimate the following equation, and use it to determine where to split the sample between early and late transformers:

$$(2) \quad \ln(light_{ic}) = X_{ic}\beta + Early_c X_{ic}\beta_d + f_c + \epsilon_{ic}$$

where  $Early_c$  is a dummy variable indicating whether a country is in the high category of, for example, education. We carry out the sample split exercise for our three measures: education, urbanization, and GDPpc. Panel A of Figure V provides an illustration of the approach for the education proxy. The vertical axis represents the sum of squared residuals (SSR), summed across two regressions carried out with the same specification on two separate samples. The horizontal axis specifies the cutoff level of education defining the early and late samples. SSR is minimized (and therefore explained variance is maximized) at a cutoff level of 2.83 years of education in 1950. Panels B and C of Figure V show the analogous information for the urbanization and GDPpc proxies. A 1950 urbanization level of 36.16% and a 1950 GDPpc of 2,231 (2005 US dollars PPP) are the respective cutoffs. Regardless of the proxy we use, we end up with a similar

---

<sup>27</sup> 1950 is the earliest year with comprehensive data on all these measures. We considered estimates from 1900 or earlier, but for many countries measures are either not available or not credible in our view.

split of the sample. Assignment to the high and low categories for each split variable are listed by country in Appendix A.

*V.C. Differential results: Explanatory power*

Table III reports key results, the contribution of different blocks of variables in explaining lights variation within the early and late agglomeration samples, following equation (2). The top part of Panel A shows each variable set's contribution to  $R^2$  for low and high education countries. To highlight the comparison of interest, we can net out the contribution of the base variables. In the high education countries, the additional explanatory power of the agricultural variables is more than that of the trade variables. In the low education countries, it is the trade variables that offer relatively more explanatory power. Specifically, agriculture adds 0.27 to explanatory power relative to the base for high education countries but only 0.16 for low education. In contrast, trade adds 0.04 for high education countries compared to 0.10 for low education countries.

The last row in panel A summarizes this relationship, the relative advantage of agriculture over trade variables in explaining lights variation for high versus low education countries, in a double difference (e.g.  $0.27-0.04)-(0.16-0.10)$ ). Agriculture is relatively more important for early developing countries. The double differential is 0.17 for all three splits. Alternatively put, in early developing countries (by any of our three measures), agricultural variables incrementally explain at least 6 times as much variation in lights as do trade variables, while among late developing countries the ratio is roughly 1.5.

Panel B shows the relative contribution of agricultural versus trade variables as evidenced by Shapley values for high and low education countries. The Shapley value for agriculture variables is 14 times as large as that for trade variables in high education countries but only 2.1 times as large in low education countries. The pattern is similar for other sample splits, and consistent with the double-difference R-squared results.

We note that this differential is not due to differences in absolute levels of variance in the geographic variables between the two samples. In other words, it is not simply the case that there is little within-country variation in the trade variables in early agglomerating countries, or little



variation in the agriculture variables in late agglomerating countries. All five trade variables actually have a larger variance in the early agglomerators. Eight of 17 agricultural variables have a larger variance in the late agglomerators. Even among those agricultural variables with a larger variance in the early agglomerators, the differentials in standard deviations, except for a few biomes, are within 50 percent of the global standard deviation.

Finally, we consider the possibility that the relevant distinction is not between early and late agglomerators as we have conceptualized them, but rather between the Old World and the New World, where European conquest reset settlement patterns. Of course, equation (2) will have more explanatory power than equation (1) regardless of the split variable used, and a New-Old World split yields similar explanatory power as the high-low education, urbanization, or GDPpc splits. However, Panel C of Table III shows these other splitting variables are not simply proxies for the New World-Old World split. The relative advantage of agriculture over trade variables in explaining lights variation for high versus low education countries (or high versus low urbanization or GDPpc countries) is present in both New and Old World countries. In other words, results are consistent with our model within the New World and within the Old World. We do note that the double differentials are greater in the New World, where the influence of pre-Industrial Revolution interior and often ancient cities in the developing world may be less. That is, we start our experiment with a cleaner slate.

#### *V.D. Differential Results: Marginal effects*

Table III emphasized the overall explanatory power of groups of trade and agricultural variables in the two samples. We now consider the differential in their relative marginal effects. If marginal effects of trade variables, relative to marginal effects of agricultural variables, are stronger in late agglomerator countries than in early agglomerator countries, this is consistent with the explanatory power results. Table IV reports estimated coefficients from equation (2). Column 1 shows the main effect, which is for low education countries, and column 2 shows the differential for high education ones, with analogous results for the other split variables in columns 3-6. In general, interaction effects are significant. We focus on the differential in the

trade variables. The main effects show that, for late agglomerators (developing countries), being near a coast, lake, navigable river and natural harbor are all associated with increased intensity of economic activity, as is proximity to the coast entered as linear distance. However, the interaction effects are all offsetting, meaning that effects are all weaker in early agglomerating, high income countries. Three of the variables have a net effect indistinguishable from zero for early agglomerators. River location retains a positive but greatly diminished effect. Only natural harbor presence has a strong (albeit still relatively diminished) effect for early agglomerators. The strength of these trade variable results may seem surprising but they are exactly what our framework predicts. For agricultural variables the pattern is less distinct. We expect but do not always see heightened effects for high education countries. The relative effects of land suitability and growing days may be masked by the biome variables, some of which are distributed quite unevenly between the two groups of countries.

To test for overall differential effects across groups more formally, we impose more structure in the following equation:

$$(3) \quad \ln(light_{ic}) = X_{ic}^B \beta_B + X_{ic}^A \beta_A + X_{ic}^T \beta_T + Early_c (\alpha X_{ic}^A \beta_A + \gamma X_{ic}^T \beta_T) + f_c + \epsilon_{ic}$$

where “B” refers to the 2 base covariates, “A” to agriculture, and “T” to trade. The common (constrained) deviation of effects for early agglomerators (where  $Early_c = 1$ ) are  $\alpha$  and  $\gamma$  for the sets of agricultural and trade variables, respectively. Table V reports non-linear least squares estimates of  $\alpha$  and  $\gamma$  in equation (3), for the education, urbanization and GDPpc split variables (the full set of estimated coefficients are in Online Appendix Table C3). In Table V, patterns are similar for all three splits. The  $\alpha$  coefficients are positive and the  $\gamma$  coefficients are negative, and all are significant. The marginal effects of agricultural variables as a group are 19- 33% larger in absolute value for early agglomerators compared to late agglomerators, while the marginal effects of trade variables are 39 - 65% smaller. Thus, not only are the agriculture variables relatively more important than the trade variables in explaining lights variation for early versus late agglomerators, but marginal effects of agriculture compared to trade variables are relatively stronger for early versus late agglomerators.

As a means of visualizing how the determinants of agglomeration location have changed over time, we examine the difference between fitted values generated using the estimates for early developing countries and those generated using estimates for late developers. We can generate both sets of these fitted values for every country, regardless of whether it actually developed early or late. The larger the difference between these two estimates, the more that grid cell is favored by the coefficients that governed early developers relative to those that govern late developers. In practice, this is equivalent to constructing fitted values of  $(\alpha X_{ic}^A \beta_A + \gamma X_{ic}^T \beta_T)$  in equation (3). Figure VI shows this difference in fitted values for Europe, Africa, and parts of western Asia, using the education split.

In Africa, for example, interior areas such as the Congo basin and the Ethiopian highlands would have had higher light density under the early development regime than under the late development regime (which is in fact what applied to them). And similarly, in Africa, the areas around navigable rivers, particularly the Nile and Niger, have higher predicted densities under late development than if the region had developed early. Within Europe, coastal areas, which of course already have particularly high density, would have had even higher density if Europe had developed late instead of early. It is also interesting to note that Europe has predominantly negative values for the difference between predicted lights using early developer coefficients and predicted lights using late developer coefficients. This means that Europe is particularly rich in characteristics that favor population density in late developers, despite the fact that it developed early.

### *V.E. Spatial Inequality*

Our conceptual framework provides a further prediction concerning spatial inequality. Early agglomerators, with their hinterland activity focused around agriculturally suitable land, should have a higher degree of spatial equality in lights overall than late agglomerators, where activity is concentrated near discrete, trade-friendly features (coasts, natural harbors, etc.) To test this prediction, we calculate a spatial Gini coefficient across cells for each country. Analogously to a typical Gini, we first construct a Lorenz curve by plotting the cumulative distribution of

lights against the cumulative distribution of cells. The Gini is then the area between the 45-degree line and the Lorenz curve divided by the total area under the 45-degree line.

Figure VII plots this Gini for each country against 1950 schooling. As predicted, the Gini falls as education rises, with many African countries in the upper left corner having very high Gini values. However, there is enormous heterogeneity. Countries like Canada, USA and Australia with huge tracts of essentially uninhabitable land also have high Ginis. We thus regress the Gini on 1950 education (and urbanization and GDPpc) now in continuous form given the use of country-level data, and add key controls. Table VI reports results, and as usual we focus on the education results in Columns 1-3, as the urbanization and GDPpc results are very similar. Column 1 reports the regression equivalent of Figure VII. A one standard deviation increase in schooling (2.35 years) is associated with a 0.06 education (0.40 standard deviations) in the Gini. Column 2 adds a control for the Gini of *predicted* lights based on the Table I fixed effects specification. This is the inequality that we would expect from geography alone. That heightens the negative marginal effect of education. Column 3 then adds in controls for log country land area and log population, which greatly increases the  $R^2$  as expected and returns the marginal effect very close to its value in column 1.

Table VI and Figure VII show that there is a strong association between the degree of early agglomeration and spatial equality. We have interpreted this through the lens of persistence and early versus late agglomerators. A reading of Williamson (1965) might suggest a complementary explanation in a spatial version of the Kuznets curve. Many late agglomerators are in the midst of structural transformation. During that transition as countries urbanize we expect spatial inequality to rise as transforming regions where urbanization is focused have increased incomes per capita relative to the rural regions from which they are drawing people out of agriculture. As development proceeds, eventually incomes per capita will tend to converge across initially disparate regions as shown in Barro and Sala-i-Martin (1995, Chapter 11) for some of our early agglomerators. Thus part of the enhanced inequality of late agglomerators in Figure VII may arise from this on-going transition. Our focus is on population allocation as reflected by lights, and our story is more about the inequality in agglomeration across regions than differences in income per capita. However the two are related as we see next.

This association between spatial inequality in economic activity and likelihood of early agglomeration extends to spatial inequality in educational achievement. Table VII and Figure VIII show the degree of within-country spatial inequality in educational achievement using data from Gennaioli, La Porta, Lopez-de-Silanes and Shleifer (2013). These authors report average years of schooling for administrative regions at the first sub-national level of governance (e.g., state/province) in 107 countries. Figure VIII plots a population-weighted Gini of this contemporary schooling measure against 1950 average schooling for each country. Again we see the downward slope indicating inequality declining as schooling and likelihood of early agglomeration rise. Table VII shows the analogous regressions for education, urbanization and GDPpc in 1950, with and without controls for country land area and population. The slope of the 1950 variables are consistently negative in all specifications.

Again part of this differential in inequality could follow the spatial transition and convergence story in Williamson and Barro and Sala-i-Martin. But it also relates to the recent urban literature on sorting across space (Behrens, Duranton, and Robert-Nicoud 2014). Large agglomerations attract relatively more high-skilled workers first because they specialize in skill-intensive business and financial services (Davis and Dingel 2014), and second because they facilitate learning more effectively for these high-skilled workers (Puga and de la Roca 2017). In the context of our story, that suggests that in late agglomerators, hinterland regions have a strong disadvantage in attracting high skill workers away from large cities on the coast.

## **VI. Conclusion**

In this paper we have explored the role of natural characteristics in determining the location of economic activity, with a focus on the within-country distribution. Natural characteristics have a surprisingly high degree of overall explanatory power, but when we divide these natural characteristics into those associated with agricultural productivity and those associated with ease of trade, a puzzle emerges. In early developing countries, agricultural variables incrementally explain at least six times as much variation in lights as do trade variables, while among late developing countries the ratio is roughly 1.5. Correspondingly, the marginal

effects of agricultural variables as a group on lights are 19 - 33% larger in absolute value for countries that developed early compared to those that developed later, while the marginal effects of trade variables are 39 - 65% smaller. The puzzle is that that early developing countries, where agricultural variables are more important in explaining the location of economic activity, tend to be wealthy and have much smaller agricultural sectors than countries that developed later.

We see the resolution of this puzzle in the intersection of three forces. The first is persistence, the strong tendency for spatial patterns of agglomeration, once established, to remain in place. The second is the changing weights on different natural characteristics as economies develop. The two most important changes, in our view, are a reduction in the weight of characteristics associated with agricultural productivity and an increase in the weight of characteristics associated with trade. Finally, the third force is that early- and late-developing countries experienced changes in the weights associated with sets of natural characteristics in a different order.

In today's developed countries the process of agglomeration and structural transformation began early, when transport costs were still relatively high, so urban agglomerations arose in multiple agricultural regions. High costs of trade protected local markets. In later developing countries, transport costs fell well before structural transformation started. To exploit urban scale economies with a limited national urban labor force, manufacturing tended to agglomerate in relatively few, often coastal, locations. With structural transformation, these initial coastal locations grew, while cities formed more rarely in the agricultural interior. Another implication of these forces is that spatial inequality in the distribution of resources within countries will be greater in today's developing countries compared to countries that developed earlier. Agricultural fundamentals drove the location of economic activity in developed countries, while cost of trade fundamentals play a much bigger role in developing countries.

Thus the paper tells us that we shouldn't expect spatial development in poor and middle income countries to follow the same pattern observed in countries that urbanized earlier. This observation has potential policy implications. The drive to invest in infrastructure to develop hinterland cities in China and parts of Sub-Saharan Africa, perhaps with implicit reference to the

experience of developed countries, may be somewhat misguided, given the new weights on geographic fundamentals for these areas.

London School of Economics,  
Amazon.com  
Tufts University  
Brown University and National Bureau of Economic Research

### **Supplementary Material**

An Online Appendix for the article can be found at the Quarterly Journal of Economics online.

## References

- Ades, Alberto F., and Edward L. Glaeser, "Trade and Circuses: Explaining Urban Giants," *Quarterly Journal of Economics*, 110(1995), 195-227.
- Allen, Robert C., "Economic structure and agricultural productivity in Europe, 1300–1800," *European Review of Economic History*, 4(2000), 1-25.
- Allen, Treb, and Costas Arkolakis, "Trade and the Topography of the Spatial Economy," *Quarterly Journal of Economics*, 129(2014), 1085-1140.
- Bairoch, Paul, *Cities and Economic Development: From the Dawn of History to the Present*, (Translated by Christopher Braider. Chicago, IL: University of Chicago Press, 1988).
- Barro, Robert, and Jong-Wha Lee, "A New Data Set of Educational Attainment in the World, 1950-2010," *Journal of Development Economics*, 104(2010), 184-198.
- Barro, Robert, and Xavier Sala-i-Martin, *Economic growth*, (McGraw-Hill, 1995).
- Behrens, Kristian, Gilles Duranton, and Frédéric Robert-Nicoud, "Productive Cities: Sorting, Selection, and Agglomeration," *Journal of Political Economy*, 122(2014), 507-553.
- Berry, Thomas Senior, *Western Prices Before 1861: A Study of the Cincinnati Market*, (Cambridge, MA: Harvard University Press, 1943).
- Black, Duncan, and J. Vernon Henderson, "Urban Evolution in the USA," *Journal of Economic Geography*, 3(2003), 343-372.
- Bleakley, Hoyt, and Jeffrey Lin, "Portage and Path Dependence," *Quarterly Journal of Economics*, 127(2012), 587-644.
- Bolt, Jutta, and Jan Luiten van Zanden, "The Maddison Project: collaborative research on historical national accounts," *The Economic History Review*, 67(2014), 627–651.
- Chanda, Areendam, and Dachao Ruan, "Early Urbanization and the Persistence of Regional Disparities within Countries," Mimeo, Louisiana State University, 2017.
- Chandler, Tertius, *Four Thousand Years of Urban Growth: An Historical Census, Revised Edition*, (Lewinston, NY: Edwin Mellen Press, 1987).
- Christiaensen, Luc, and Ravi Kanbur, "Secondary towns and poverty reduction: refocusing the urbanization agenda," Policy Research working paper WPS 7895, 2016.



CIESIN (Center for International Earth Science Information Network, Columbia University), and, CIAT (Centro Internacional de Agricultura Tropical), “Gridded Population of the World, Version 3 (GPWv3): Population Density Grid,” (Palisades, NY: NASA Socioeconomic Data and Applications Center (SEDAC), <http://dx.doi.org/10.7927/H4XK8CG2>, 2005).

Conley, Timothy G., “GMM estimation with cross sectional dependence,” *Journal of Econometrics*, 92(1999), 1-45.

Davis, Donald R., and David E. Weinstein, “Bones, Bombs, and Break Points: The Geography of Economic Activity,” *American Economic Review* 92(2002), 1269-1289.

Davis, Donald R., and Jonathan I. Dingel, "The Comparative Advantage of Cities," NBER Working Papers 20602, 2014.

Desmet, Klaus and J.V. Henderson 2015. “The geography of development within countries,” in *Handbook of Regional and Urban Economics*, Volume 5, Gilles Duranton, J. Vernon Henderson and William C. Strange eds. (North Holland, 2015).

Dittmar, Jeremiah, “Cities, Markets, and Growth: The Emergence of Zipf ’s Law,” Mimeo, London School of Economics, 2011.

Donaldson, Dave, “Railroads of the Raj: Estimating the Impact of Transportation Infrastructure,” *American Economic Review*, forthcoming.

Durlauf, Steven N., and Johnson, Paul A., "Multiple Regimes and Cross-Country Growth Behaviour," *Journal of Applied Econometrics*, 10(1995), 365-384.

Duranton, Gilles, “Urban evolutions: The fast, the slow, and the still,” *American Economic Review*, 97(2007), 197-221.

Eaton, Jonathan, and Zvika Eckstein, “Cities and Growth: Theory and Evidence from France and Japan,” *Regional Science and Urban Economics*, 27(1997), 443-474.

Elvidge, Christopher, Kimberly Baugh, John Dietz, Theodore Bland, Paul Sutton, and Herbert Kroehl, “Radiance Calibration of DMSP-OLS Low-Light Imaging Data of Human Settlements,” *Remote Sensing of Environment*, 68(1999), 77-88.

Elvidge, Christopher, Daniel Ziskin, Kimberly Baugh, Benjamin Tuttle, Ghosh Tilottama, Dee Pack, Edward Erwin, Mikhail Zhizhin, “A Fifteen Year Record of Global Natural Gas Flaring Derived from Satellite Data,” *Energies*, 2(2009), 595-622.

- FAO/IIASA, "Global Agro-ecological Zones (GAEZ v3.0)," (FAO Rome, Italy and IIASA, Laxenburg, Austria, <http://gaez.fao.org>, 2011).
- Gennaioli, Nicola, Rafael La Porta, Florencio López-de-Silanes, and Andrei Shleifer, "Human Capital and Regional Development," *Quarterly Journal of Economics*, 128(2013), 105-164.
- Gennaioli, Nicola, Rafael La Porta, Florencio López-de-Silanes, and Andrei Shleifer, "Growth in Regions." *Journal of Economic Growth*, 19(2014), 259-309.
- Gibbons, Steve, Henry G. Overman, and Eleonora Patacchini, "Spatial methods," in *Handbook of Regional and Urban Economics*, Volume 5, Gilles Duranton, J. Vernon Henderson and William C. Strange eds. (North Holland, 2015).
- Gollin, Douglas, Stephen L. Parente, and Richard Rogerson, "The Food Problem and the Evolution of International Income Levels," *Journal of Monetary Economics*, 54(2007), 1230-1255.
- Gollin, Douglas, and Richard Rogerson, "Agriculture, Roads, and Economic Development in Uganda," in *African Successes: Modernization and Development*, Chapter 2, Sebastian Edwards, Simon Johnson, and David N. Weil eds. (Chicago, IL: University of Chicago Press, 2016).
- Harley, C. Knick, "Ocean Freight Rates and Productivity, 1740-1913: The Primacy of Mechanical Invention Reaffirmed," *Journal of Economic History*, 48(1988), 851-876.
- Henderson, J. Vernon, Adam Storeygard, and David N. Weil, "Measuring Economic Growth from Outer Space," *American Economic Review*, 102(2012): 994-1028.
- Henderson, J. Vernon, and Hyoung Gun Wang, "Urbanization and city growth: The role of institutions," *Regional Science and Urban Economics*, 37(2007): 283-313.
- ISciences LLC, "Elevation and Depth v2 2000 (dataset)," (<http://geoserver.isciences.com:8080/geonetwork/srv/en/resources.get?id=208&fname=ElevationGridv2.zip&access=private>, 2008).
- Jedwab, Remi and Alexander Moradi, "The Permanent Economic Effects of Transportation Revolutions in Poor Countries: Evidence from Africa," *Review of Economics and Statistics*, 98(2016), 268-284.

- Jedwab, Remi, Edward Kerby, and Alexander Moradi “History, Path Dependence and Development: Evidence from Colonial Railroads, Settlers and Cities in Kenya,” *The Economic Journal*, (2017).
- Karayalcin, Cem, and Mehmet Ulubasoglu, “Romes without Empires: Urban Concentration, Political Competition, and Economic Growth,” Mimeo, Florida International University, 2010.
- Kiszewski, Anthony, Andrew Mellinger, Andrew Spielman, Pia Malaney, Sonia Ehrlich Sachs, and Jeffrey Sachs, “A Global Index Representing The Stability Of Malaria Transmission,” *American Journal of Tropical Medicine and Hygiene*, 70(2004), 486-498.
- Klein Goldewijk, Kees, Arthur Beusen, Gerard Van Drecht, and Martine De Vos, “The HYDE 3.1 spatially explicit database of human-induced global land-use change over the past 12,000 years,” *Global Ecology & Biogeography*, 20(2011), 73–86.
- Lehner, Bernhard, and Petra Döll, “Development and validation of a global database of lakes, reservoirs and wetlands,” *Journal of Hydrology*, 296(2004), 1-22.
- Limão, Nuno, and Anthony J. Venables, “Infrastructure, Geographical Disadvantage and Transport Costs,” Policy Research Working Paper 2257, World Bank, 1999.
- Masters, William A., and Margaret S. McMillan, “Climate and Scale in Economic Growth,” *Journal of Economic Growth*, 6(2001), 167-186.
- Mellinger, Andrew, Jeffrey D. Sachs, and John Luke Gallup, “Climate, Coastal Proximity, and Development,” in Clark, Gordon L., Maryann P. Feldman, and Meric S. Gertler, eds., *The Oxford Handbook of Economic Geography*, (2000), 169-194.
- Motamed, Mesbah J., Raymond J.G.M. Florax, and William A. Masters. 2014. “Agriculture, Transportation and the Timing of Urbanization: Global Analysis at the Grid Cell Level,” *Journal of Economic Growth*, 19(2014), 339-368.
- Michaels, Guy, and Ferdinand Rauch, “Resetting the Urban Network: 117-2012,” *The Economic Journal*, forthcoming.
- Ministry of Human Resource Development [India], “A Hand Book of Educational and Allied Statistics,” (New Delhi, <http://www.teindia.nic.in/mhrd/50yrsedu/g/Z/EJ/0ZEJ0401.htm>, Accessed 9 August 2015, 1987).

- Mitchell, Timothy D., and Philip D. Jones. 2005. "An improved method of constructing a database of monthly climate observations and associated high-resolution grids," *International Journal of Climatology*, 25(2005), 693–712.
- Mohammed, S.I.S., and J.G. Williamson, "Freight rates and productivity gains in British tramp shipping 1869–1950," *Explorations in Economic History*, 41(2004), 172–203.
- Natural Earth, "Natural Earth version 2.0.0," (<http://naturalearthdata.com/>, 2012).
- NOAA National Geophysical Data Center, "Global Self-consistent, Hierarchical, High-resolution Geography Database (GSHHG) Version 2.2.0," (<http://www.ngdc.noaa.gov/mgg/shorelines/shorelines.html>, 2011).
- Nordhaus, William, "Geography and Macroeconomics: New Data and New Findings," *Proceedings of the National Academy of Sciences*, 103(2006), 3510-3517.
- Nordhaus, William, and Xi Chen, "Geography: Graphics and Economics," *The B.E. Journal of Economic Analysis and Policy*, 9(2009), 1-12.
- Nunn, Nathan, and Diego Puga, "Ruggedness: The Blessing of Bad Geography in Africa," *The Review of Economics and Statistics*, 94(2012), 20-36.
- Olson, David., Eric Dinerstein, Eric Wikramanayake, Neil Burgess, George Powell, Emma Underwood, Jennifer D'Amico, Illanga Itoua, Holly Strand, John Morrison, Colby Loucks, Thomas Allnutt, Taylor Ricketts, Yumiko Kura, John Lamoreux, Wesley Wettengel, Prashant Hedao, and Kenneth Kassem, "Terrestrial ecoregions of the world: A new map of life on earth," *Bioscience*, 51(2001), 933-8.
- Puga, Diego, and Jorge De La Roca, "Learning by working in big cities," *Review of Economic Studies*, 84(2017), 106-142.
- Ramankutty, Navin, Jonathan A. Foley, John Norman and Kevin McSweeney, "The global distribution of cultivable lands: current patterns and sensitivity to possible climate change," *Global Ecology and Biogeography*, 11(2002), 377-392.
- Rappaport, Jordan and Jeffrey Sachs, "The United States as a Coastal Nation," *Journal of Economic Growth*, 8(2003), 5-46.

- Redding, Stephen J., and Matthew A. Turner, "Transportation Costs and the Spatial Organization of Economic Activity," in *Handbook of Regional and Urban Economics*, Volume 5, Gilles Duranton, J. Vernon Henderson and William C. Strange eds. (North Holland, 2015).
- Roser, Max and Esteban Ortiz-Ospina, "Literacy," (<http://OurWorldInData.org>, 2016).
- Shiue, Carol H., and Wolfgang Keller, "Markets in China and Europe on the Eve of the Industrial Revolution," *The American Economic Review*, 97(2007), 1189-1216.
- Shorrocks, Anthony F., "Decomposition procedures for distributional analysis: a unified framework based on the Shapley value," *Journal of Economic Inequality*, 11(2013), 99-126.
- Small, C., Pozzi, F. and Elvidge, C.D., "Spatial analysis of global urban extent from DMSP-OLS nighttime lights," *Remote Sensing of Environment*, 96(2005), 277-291.
- Stevens, Forrest R., Andrea E. Gaughan, Catherine Linard, and Andrew J. Tatem, "Disaggregating Census Data for Population Mapping Using Random Forests with Remotely-Sensed and Ancillary Data," *PLoS One*, 10(2015): e0107042.
- Taylor, George R, *The Transportation Revolution, 1815-60*, (New York: Holt, Rinehart and Winston, 1951).
- Teravaninthorn, Supee, and Gaël Raballand, "Transport Prices and Costs in Africa A Review of the Main International Corridors," Washington: The World Bank, 2009.
- Tobler, Waldo, "Global spatial analysis," *Computers, Environment and Urban Systems*, 26(2002), 493-500.
- Uganda Bureau of Statistics, "Statistical Abstract 2006," (<http://www.ubos.org/onlinefiles/uploads/ubos/pdf%20documents/abstracts/Statistical%20Abstract%202006.pdf>, 2006).
- University of East Anglia Climatic Research Unit, Jones, P.D., and Harris, I., "CRU TS3.20: Climatic Research Unit (CRU) Time-Series (TS) Version 3.20 of High Resolution Gridded Data of Month-by-month Variation in Climate (Jan. 1901 - Dec. 2011)," (NCAS British Atmospheric Data Centre, <http://catalogue.ceda.ac.uk/uuid/2949a8a25b375c9e323c53f6b6cb2a3a>, 2013).
- United Nations, "World Urbanization Prospects, the 2014 revision," (New York, NY, 2014).

- UNESCO, "World Illiteracy at Mid-Century: A Statistical Study," (Paris, <http://unesdoc.unesco.org/images/0000/000029/002930eo.pdf>, 1957).
- US Navy, "World Port Index 1953," (Hydrographic Office, US Navy, 1953).
- Wahl, Fabian, "Does Medieval Trade Still Matter? Historical Trade Centers, Agglomeration and Contemporary Economic Development," *Regional Science and Urban Economics*, 60(2016), 50-60.
- Wessel, P., and W. H. F. Smith, "A Global Self-consistent, Hierarchical, High-resolution Shoreline Database," *Journal of Geophysical Research*, 101(1996), 8741-8743.
- Williamson, J. G., "Regional Inequality and the Process of National Development: A Description of the Patterns," *Economic Development and Cultural Change* 13(1965), 1-84.
- Williamson, Jeffrey G., *Late nineteenth-century American development: a general equilibrium history*, (London: Cambridge University Press, 1974).
- Willmott, C. J. and K. Matsuura, "Terrestrial Precipitation: 1900-2010 Gridded Monthly Time Series (V 3.02)," ([http://climate.geog.udel.edu/~climate/html\\_pages/Global2011/Precip\\_revised\\_3.02/README.GlobalTsP2011.html](http://climate.geog.udel.edu/~climate/html_pages/Global2011/Precip_revised_3.02/README.GlobalTsP2011.html), 2012).
- World Bank, "World Development Indicators online," (Accessed 9 Aug 2015, 2015).
- Ziskin, Daniel, Kimberly Baugh, Feng Chi Hsu, Tilottama Ghosh, and Chris Elvidge, "Methods Used For the 2006 Radiance Lights," *Proceedings of the 30th Asia-Pacific Advanced Network Meeting*, (2010), 131-142.

Table I: Summary Statistics and Baseline Regression Results

	Summary Statistics		Regression w/out FEs		Regression w/ FEs	
	mean, (sd)	min, max	Coefficient	Shapley	Coefficient	Shapley
<b>Dependent variable</b>						
ln(light/land pixels)	-3.357 (3.119)	-5.684 6.941				
<b>Base covariates</b>						
ruggedness (000s)	2.781 (4.852)	0 95.81	-0.00764*** (0.00196)	0.000505	-0.0148*** (0.00165)	0.000935
malaria index	1.921 (5.289)	0 38.08	-0.0340*** (0.00248)	0.0181	-0.0472*** (0.00235)	0.0129
<b>Agriculture covariates</b>						
tropical moist forest	0.117 (0.321)	0 1	-0.0126 (0.0750)	0.165	-0.207*** (0.0651)	0.130
tropical dry forest	0.0223 (0.148)	0 1	0.995*** (0.0942)		0.244*** (0.0796)	
temperate broadleaf	0.104 (0.306)	0 1	1.795*** (0.0701)		1.304*** (0.0647)	
temperate conifer	0.0330 (0.179)	0 1	0.776*** (0.0815)		0.161** (0.0777)	
boreal forest	0.166 (0.372)	0 1	-0.483*** (0.0758)		-1.283*** (0.0808)	
tropical grassland	0.121 (0.326)	0 1	-0.803*** (0.0555)		-0.0349 (0.0479)	
temperate grassland	0.0772 (0.267)	0 1	0.744*** (0.0649)		0.938*** (0.0571)	
montane grassland	0.0334 (0.180)	0 1	0.613*** (0.0798)		0.719*** (0.0716)	
tundra	0.122 (0.327)	0 1	-0.846*** (0.0848)		-1.417*** (0.0885)	
Mediterranean forest	0.0242 (0.154)	0 1	0.843*** (0.0926)		1.362*** (0.0885)	
mangroves	0.00404 (0.0634)	0 1	0.0228 (0.160)		-0.443*** (0.138)	
desert	0.175 (0.380)	0 1				
temperature (deg. C)	10.02 (13.77)	-22.29 30.37	0.172*** (0.00335)	0.0383	0.116*** (0.00378)	0.0295
precipitation (mm/month)	60.82 (59.27)	0.387 921.9	-0.00897*** (0.000404)	0.0112	-0.0113*** (0.000413)	0.0102
growing days	139.6 (99.04)	0 366	0.00989*** (0.000276)	0.0446	0.00851*** (0.000275)	0.0364
land suitability	0.275 (0.320)	0 1	2.692*** (0.0545)	0.125	2.226*** (0.0521)	0.102
abs(latitude)	38.31 (20.93)	0.125 74.88	0.114*** (0.00247)	0.0268	0.0338*** (0.00328)	0.0144
elevation (km)	0.605 (0.790)	-0.187 6.169	0.521*** (0.0239)	0.00640	0.0727*** (0.0255)	0.00536
<b>Trade covariates</b>						
coast	0.0972 (0.296)	0 1	0.191*** (0.0373)	0.00254	0.199*** (0.0300)	0.00222
distance to coast (000s km)	0.486 (0.481)	0 2.274	-0.685*** (0.0275)	0.0102	-0.656*** (0.0318)	0.00770
harbor < 25km	0.0273 (0.163)	0 1	1.456*** (0.0652)	0.0148	1.260*** (0.0546)	0.0119
river < 25km	0.0273 (0.163)	0 1	0.797*** (0.0623)	0.00246	0.697*** (0.0569)	0.00213
lake < 25km	0.0108 (0.104)	0 1	0.614*** (0.0867)	0.000406	0.598*** (0.0828)	0.000453
Number of observations	242184		242184		242184	
R-squared			0.467		0.577	

Notes: The first two columns show means and standard deviations, and minima and maxima, for all geographic variables for the full sample. The third and fifth columns report OLS coefficient estimates from equation (1) on a global sample, with and without country fixed effects, respectively. Standard errors, clustered by 3x3 sets of grid squares, are in parentheses. \* p<0.1, \*\* p<0.05, \*\*\* p<0.01. Columns 4 and 6 report the corresponding Shapley values for biomes as a group, and for all other right hand side variables individually. See text for variable definitions.

Table II: R-squared and Shapley values from regressions predicting  $\ln(\text{light}/\text{land pixels})$

	(1)	(2)
	No country FEs	With country FEs
<b>Panel A - R-squared</b>		
(1) All variables (N = 242,184)	0.467	0.577
(2) Base variables (malaria, ruggedness)	0.020	0.355
(3) Agriculture variables (plus base)	0.450	0.566
(4) Trade variables (plus base)	0.066	0.370
(5) Country fixed effects		0.345
<b>Panel B - Shapley values</b>		
(1) Base	0.011	0.009
(2) Agriculture	0.423	0.321
(3) Trade	0.033	0.025
(4) Country FEs		0.222

Notes: Each entry in Panel A represents an  $R^2$  value from a separate regression of  $\ln(\text{light})$  on the right hand side variables listed in the row and column headings. Each column in Panel B corresponds to a separate regression. The values shown are Shapley value for the set of variables shown.



Table III: R-squared differentials of trade and agriculture variables in regression predicting ln(light/land pixels) for high/low education and urbanization countries

	<u>Education</u>		<u>Urbanization</u>		<u>GDP per capita</u>	
	High	Low	High	Low	High	Low
Countries	58	82	63	121	36	101
Observations	126,671	100,361	138,020	103,975	80,310	100,602
<b>Panel A - <math>R^2</math></b>						
<b>Full Sample</b>						
Base + FE	0.385	0.294	0.351	0.362	0.387	0.375
Agriculture + base + FE	0.653	0.452	0.614	0.511	0.644	0.521
Trade + base + FE	0.425	0.395	0.386	0.452	0.419	0.467
High - Low double differential	0.171		0.170		0.171	
<b>Panel B - Shapley Values</b>						
<b>Full Sample</b>						
Base	0.006	0.020	0.005	0.022	0.004	0.021
Agriculture	0.397	0.197	0.371	0.217	0.358	0.216
Trade	0.029	0.091	0.026	0.080	0.032	0.093
Country FEs	0.227	0.182	0.218	0.223	0.255	0.224
<b>Panel C - <math>R^2</math>, Hemispheres</b>						
<b>New World</b>						
Base + FE	0.245	0.236	0.253	0.258	0.239	0.264
Agriculture + base + FE	0.609	0.346	0.586	0.394	0.581	0.399
Trade + base + FE	0.303	0.321	0.297	0.343	0.286	0.348
High - Low double differential	0.280		0.238		0.244	
<b>Old World</b>						
Base + FE	0.486	0.345	0.436	0.409	0.420	0.425
Agriculture + base + FE	0.706	0.528	0.661	0.569	0.611	0.580
Trade + base + FE	0.518	0.433	0.467	0.485	0.450	0.504
High - Low double differential	0.092		0.111		0.085	

Notes: Each number in the first three rows of Panel A is an  $R^2$  value from a separate regression of ln(light) on the set of right hand side variables listed in the row, for a sample defined by the column headings. The last row shows the double differential (Agriculture High - Trade High) - (Agriculture Low - Trade Low). FE stands for country fixed effects. Panel B shows the corresponding Shapley values, and Panel C is analog of Panel A run separately for the Old and New Worlds. The cutoffs for education, urbanization, and GDP per capita are, respectively: 2.83 years of schooling, 36.16 percent urbanized, and 2,231 dollars (2005 PPP)

Table IV: Regression results allowing interactions between geographic variables and early agglomerator dummy

	<u>Education</u>		<u>Urbanization</u>		<u>GDP per capita</u>	
	Main effect	Interaction	Main effect	Interaction	Main effect	Interaction
<b>Base covariates</b>						
ruggedness (000s)	-0.0169*** (0.00283)	0.00995*** (0.00361)	-0.0189*** (0.00255)	0.00550* (0.00334)	-0.0154*** (0.00258)	0.0166*** (0.00388)
malaria index	-0.0267*** (0.00273)	-0.0634*** (0.00863)	-0.0252*** (0.00245)	-0.124*** (0.00984)	-0.0247*** (0.00251)	-0.122*** (0.00936)
<b>Agriculture covariates</b>						
tropical moist forest	-0.0667 (0.0802)	0.812*** (0.239)	0.259*** (0.0759)	-1.992*** (0.193)	0.290*** (0.0759)	-2.164*** (0.188)
tropical dry forest	0.376*** (0.0912)	0.363 (0.336)	0.501*** (0.0910)	-0.540*** (0.190)	0.550*** (0.0907)	-0.722*** (0.191)
temperate broadleaf	0.982*** (0.0912)	0.259* (0.137)	1.035*** (0.0870)	0.373*** (0.128)	0.994*** (0.0876)	0.145 (0.143)
temperate conifer	0.322*** (0.120)	-0.170 (0.164)	0.573*** (0.116)	-0.419*** (0.156)	0.434*** (0.115)	-0.434** (0.171)
boreal forest	-0.0237 (0.133)	-1.041*** (0.172)	-0.0352 (0.136)	-0.882*** (0.169)	-0.223 (0.138)	-1.741*** (0.193)
tropical grassland	-0.0181 (0.0659)	-0.360*** (0.107)	0.154*** (0.0587)	-0.428*** (0.101)	0.170*** (0.0589)	-0.688*** (0.105)
temperate grassland	0.440*** (0.0880)	0.375*** (0.126)	0.370*** (0.101)	0.622*** (0.126)	0.0608 (0.111)	0.771*** (0.147)
montane grassland	0.306*** (0.0988)	1.154*** (0.166)	0.462*** (0.0921)	0.947*** (0.152)	0.480*** (0.0928)	0.748*** (0.168)
tundra	-0.717*** (0.116)		-0.634*** (0.107)		-1.585*** (0.148)	
Mediterranean forest	1.999*** (0.130)	-1.189*** (0.166)	1.951*** (0.130)	-1.083*** (0.165)	1.840*** (0.124)	-1.100*** (0.165)
mangroves	-0.945*** (0.165)	0.765* (0.443)	-0.378** (0.164)	-1.116*** (0.323)	-0.442*** (0.163)	-0.909** (0.390)
temperature (deg. C)	0.121*** (0.00790)	-0.0238*** (0.00903)	0.133*** (0.00768)	-0.0397*** (0.00881)	0.122*** (0.00774)	-0.148*** (0.0112)
precipitation (mm/month)	-0.0101*** (0.000563)	0.00176** (0.000780)	-0.00943*** (0.000542)	0.000307 (0.000745)	-0.0103*** (0.000567)	0.0000965 (0.000816)
growing days	0.00711*** (0.000398)	0.00129** (0.000551)	0.00716*** (0.000372)	0.00125** (0.000527)	0.00733*** (0.000377)	0.00166*** (0.000569)
land suitability	2.158*** (0.0774)	-0.0960 (0.110)	2.070*** (0.0746)	0.0743 (0.104)	1.981*** (0.0755)	-0.139 (0.118)
abs(latitude)	0.0886*** (0.00564)	-0.0921*** (0.00685)	0.102*** (0.00540)	-0.110*** (0.00661)	0.1000*** (0.00542)	-0.189*** (0.00790)
elevation (km)	0.248*** (0.0408)	-0.635*** (0.0576)	0.222*** (0.0392)	-0.363*** (0.0543)	0.167*** (0.0395)	-0.711*** (0.0593)
<b>Trade covariates</b>						
coast	0.915*** (0.0701)	-0.995*** (0.0767)	0.706*** (0.0640)	-0.669*** (0.0712)	0.735*** (0.0624)	-0.559*** (0.0747)
distance to coast (000s km)	-1.430*** (0.0472)	1.540*** (0.0647)	-1.460*** (0.0469)	1.389*** (0.0632)	-1.512*** (0.0471)	1.367*** (0.0956)
harbor < 25km	1.564*** (0.104)	-0.345*** (0.123)	1.365*** (0.0949)	-0.129 (0.115)	1.216*** (0.0871)	0.0546 (0.115)
river < 25km	1.208*** (0.104)	-0.772*** (0.120)	0.914*** (0.105)	-0.359*** (0.120)	0.944*** (0.106)	-0.520*** (0.130)
lake < 25km	0.762*** (0.133)	-0.346** (0.170)	0.548*** (0.149)	0.0182 (0.177)	0.730*** (0.137)	-0.310* (0.170)
N	227032		241995		180912	

Notes: Each set of two consecutive columns reports OLS coefficient estimates from a separate regression of equation (2) on a global sample, split by Education, Urbanization and GDP per capita, respectively, in 1950. The first column in each pair shows main terms, and the second column shows interaction terms. Standard errors, clustered by 3x3 sets of grid squares, are in parentheses. \* p<0.1, \*\* p<0.05, \*\*\* p<0.01.

Table V: Differential Coefficient Results

	<u>Education</u>	<u>Urbanization</u>	<u>GDP per capita</u>
agriculture differential ( $\alpha$ )	0.332*** (0.0238)	0.193*** (0.0209)	0.254 (0.0239)
trade differential ( $\gamma$ )	-0.650*** (0.0178)	-0.393*** (0.0218)	-0.526*** (0.0321)
$N$	227,032	241,995	180,912

Notes: Each column reports non-linear least squares estimates of alpha and gamma in equation (3), for education, urbanization and GDPpc split variables. Discrete columns are from regressions with a dummy indicating a value above the cutoff for the split variable. Continuous columns include the split variable entered linearly. Standard errors, clustered by 3x3 sets of grid squares, are in parentheses. \*  $p < 0.1$ , \*\*  $p < 0.05$ , \*\*\*  $p < 0.01$ .

Table VI: Gini coefficient of lights

	(1)	(2)	(3)	(4)	(5)	(6)	(7)	(8)	(9)
Education 1950	-0.0265*** (0.00569)	-0.0325*** (0.00554)	-0.0263*** (0.00445)						
Urbanization 1950				-0.00283*** (0.000768)	-0.00303*** (0.000648)	-0.00179*** (0.000495)			
ln(GDP per cap. 1950)							-0.0304** (0.0145)	-0.0418** (0.0189)	-0.0267 (0.0167)
Gini of predicted lights		0.249*** (0.0801)	0.0809 (0.0525)		0.315*** (0.0753)	0.0503 (0.0556)		0.189* (0.0995)	0.0284 (0.0689)
ln(land area)			0.0675*** (0.00698)			0.0704*** (0.00579)			0.0714*** (0.00690)
ln(population in 2010)			-0.0486*** (0.00783)			-0.0343*** (0.00675)			-0.0512*** (0.00880)
constant	0.741*** (0.0163)	0.648*** (0.0391)	0.344*** (0.0672)	0.734*** (0.0212)	0.609*** (0.0331)	0.167*** (0.0586)	0.895*** (0.101)	0.896*** (0.112)	0.479*** (0.126)
<i>N</i>	140	140	139	184	184	181	137	137	135
<i>R</i> <sup>2</sup>	0.157	0.242	0.600	0.126	0.241	0.583	0.033	0.077	0.511

Notes: Each column reports OLS coefficient estimates from a country-level regression of the Gini coefficient of lights on the variables shown. Robust standard errors are in parentheses. \*  $p < 0.1$ , \*\*  $p < 0.05$ , \*\*\*  $p < 0.01$ .

Table VII: Education Ginis

	(1)	(2)	(3)	(4)	(5)	(6)
Years of schooling in 1950	-0.0183*** (0.00276)	-0.0193*** (0.00285)				
Urbanization in 1950			-0.00224*** (0.000362)	-0.00228*** (0.000368)		
Log GDP per capita in 1950					-0.0532*** (0.00939)	-0.0576*** (0.0103)
Log area (sq km)		0.00656 (0.00533)		0.0119** (0.00562)		0.0152** (0.00698)
Log population in 2010		-0.0131** (0.00575)		-0.0101* (0.00597)		-0.0207** (0.00819)
Constant	0.149*** (0.0149)	0.198*** (0.0474)	0.163*** (0.0175)	0.115** (0.0451)	0.496*** (0.0761)	0.542*** (0.103)
Observations	97	97	106	106	88	88
$R^2$	0.322	0.354	0.305	0.330	0.278	0.336

Notes: Each column reports OLS coefficient estimates from a country-level regression of the Gini coefficient of years of schooling on the variables shown. Robust standard errors are in parentheses. \*  $p < 0.1$ , \*\*  $p < 0.05$ , \*\*\*  $p < 0.01$ .

Table AI: Summary statistics for national variables

Variable	N	Mean	SD	Min	Max
Years of Schooling in 1950	140	2.92	2.35	0.02	9.19
Urbanization in 1950	184	30.68	22.81	1.70	100.00
GDP per capita in 1950	137	2476.71	4028.84	289.15	30387.13

Table AII: 1950 values by Country

Country	Educ -ation	Urban -ization	GDP per cap.	High educ.	High urban.	High GDPpc
Afghanistan	0.3	5.8	645	0	0	0
Albania	2.6	20.5	1,001	0	0	0
Algeria	0.8	22.2	1,365	0	0	0
Andorra	.	38.8	.	.	1	.
Angola	.	7.6	1,052	.	0	0
Argentina	4.8	65.3	4,987	1	1	1
Armenia	7.2	40.3	.	1	1	.
Australia	8.0	77.0	7,412	1	1	1
Austria	6.0	63.6	3,706	1	1	1
Azerbaijan	.	45.7	.	.	1	.
Bahamas	.	52.1	.	.	1	.
Bahrain	1.0	64.4	2,104	0	1	0
Bangladesh	0.9	4.3	540	0	0	0
Belarus	.	26.2	.	.	0	.
Belgium	6.8	91.5	5,462	1	1	1
Belize	7.2	55.3	.	1	1	.
Benin	0.4	5.0	1,084	0	0	0
Bhutan	.	2.1	.	.	0	.
Bolivia (Plurinational State of)	2.3	33.8	1,919	0	0	0
Bosnia and Herzegovina	.	13.7	.	.	0	.
Botswana	1.4	2.7	349	0	0	0
Brazil	2.1	36.2	1,672	0	0	0
Brunei Darussalam	2.0	26.8	.	0	0	.
Bulgaria	3.8	27.6	1,651	1	0	0
Burkina Faso	.	3.8	474	.	0	0
Burundi	0.4	1.7	360	0	0	0
Cabo Verde	.	14.2	450	.	0	0
Cambodia	0.4	10.2	482	0	0	0
Cameroon	0.7	9.3	671	0	0	0
Canada	7.6	60.9	7,291	1	1	1
Central African Republic	0.4	14.4	772	0	0	0
Chad	.	4.5	476	.	0	0
Chile	4.8	58.4	3,670	1	1	1
China	1.6	11.8	448	0	0	0
China, Hong Kong SAR	4.4	85.2	2,218	1	1	0
Colombia	2.3	32.7	2,153	0	0	0
Comoros	.	6.6	560	.	0	0
Congo	0.8	24.9	1,198	0	0	0
Costa Rica	3.5	33.5	1,963	1	0	0
Croatia	5.7	22.3	.	1	0	.
Cuba	3.5	56.5	2,046	1	1	0
Cyprus	3.6	28.4	.	1	0	.
Czech Republic	8.1	54.2	3,501	1	1	1
Cte d'Ivoire	0.8	10.0	1,041	0	0	0
Dem People's Republic of Korea	.	31.0	854	.	0	0
Democratic Republic of the Congo	0.6	19.1	570	0	0	0
Denmark	5.5	68.0	6,943	1	1	1
Djibouti	.	39.8	1,500	.	1	0
Dominican Republic	2.5	23.7	1,027	0	0	0

*Continued on next page...*

... table 1 continued

Variable Names	Educ -ation	Urban -ization	GDP per cap.	High educ.	High urban.	High GDPpc
Ecuador	2.5	28.3	1,607	0	0	0
Egypt	0.5	31.9	910	0	0	0
El Salvador	1.5	36.5	1,489	0	1	0
Equatorial Guinea	.	15.5	540	.	0	0
Eritrea	.	7.1	.	.	0	.
Estonia	6.1	49.7	.	1	1	.
Ethiopia	.	4.6	390	.	0	0
Falkland Islands (Malvinas)	.	51.0	.	.	1	.
Fiji	3.6	24.4	.	1	0	.
Finland	3.9	43.0	4,253	1	1	1
France	4.3	55.2	5,186	1	1	1
French Guiana	.	53.7	.	.	1	.
Gabon	0.5	11.4	3,108	0	0	1
Gambia	0.4	10.3	607	0	0	0
Georgia	.	36.9	.	.	1	.
Germany	6.8	68.1	3,881	1	1	1
Ghana	0.7	15.4	1,122	0	0	0
Gibraltar	.	100.0	.	.	1	.
Greece	4.1	52.2	1,915	1	1	0
Greenland	.	49.0	.	.	1	.
Guadeloupe	.	35.8	.	.	0	.
Guatemala	1.3	25.1	2,085	0	0	0
Guinea	.	6.7	303	.	0	0
Guinea-Bissau	.	10.0	289	.	0	0
Guyana	4.2	28.0	.	1	0	.
Haiti	0.6	12.2	1,051	0	0	0
Honduras	1.6	17.6	1,313	0	0	0
Hungary	7.1	53.0	2,480	1	1	1
Iceland	5.7	72.8	.	1	1	.
India	1.0	17.0	619	0	0	0
Indonesia	1.1	12.4	817	0	0	0
Iran (Islamic Republic of)	0.5	27.5	1,720	0	0	0
Iraq	0.2	35.1	1,364	0	0	0
Ireland	6.2	40.1	3,453	1	1	1
Isle of Man	.	52.9	.	.	1	.
Israel	7.3	71.0	2,817	1	1	1
Italy	4.2	54.1	3,172	1	1	1
Jamaica	3.6	24.1	1,327	1	0	0
Japan	6.7	53.4	1,921	1	1	0
Jordan	1.3	37.0	1,663	0	1	0
Kazakhstan	2.6	36.4	.	0	1	.
Kenya	1.2	5.6	651	0	0	0
Kuwait	1.5	61.5	28,878	0	1	1
Kyrgyzstan	4.0	26.5	.	1	0	.
Lao People's Democratic Republic	1.2	7.2	613	0	0	0
Latvia	3.8	46.4	.	1	1	.
Lebanon	.	32.0	2,429	.	0	1
Lesotho	2.5	1.8	355	0	0	0
Liberia	0.6	13.0	1,055	0	0	0
Libya	0.4	19.5	857	0	0	0

Continued on next page...



... table 1 continued

Variable Names	Educ -ation	Urban -ization	GDP per cap.	High educ.	High urban.	High GDPpc
Lithuania	3.7	28.8	.	1	0	.
Luxembourg	3.4	67.2	.	1	1	.
Macedonia	.	23.4	.	.	0	.
Madagascar	.	7.8	951	.	0	0
Malawi	1.0	3.5	324	0	0	0
Malaysia	2.1	20.4	1,559	0	0	0
Mali	0.1	8.5	457	0	0	0
Mauritania	1.3	3.1	464	0	0	0
Mauritius	2.5	29.3	2,490	0	0	1
Mexico	2.2	42.7	2,365	0	1	1
Monaco	.	100.0	.	.	1	.
Mongolia	1.6	20.0	435	0	0	0
Montserrat	.	15.8	.	.	0	.
Morocco	0.3	26.2	1,455	0	0	0
Mozambique	0.5	3.5	1,133	0	0	0
Myanmar	1.1	16.2	396	0	0	0
Namibia	2.4	13.4	2,160	0	0	0
Nepal	0.1	2.7	496	0	0	0
Netherland Antilles	.	.	.	.	.	.
Netherlands	6.1	56.1	5,996	1	1	1
New Caledonia	.	24.6	.	.	0	.
New Zealand	9.2	72.5	8,456	1	1	1
Nicaragua	1.5	35.2	1,616	0	0	0
Niger	0.3	4.9	617	0	0	0
Nigeria	.	7.8	753	.	0	0
Norway	7.4	50.5	5,430	1	1	1
Occupied Palestinian Territory	.	37.3	960	.	1	0
Oman	.	8.6	623	.	0	0
Pakistan	1.0	17.5	643	0	0	0
Panama	3.8	35.8	1,916	1	0	0
Papua New Guinea	0.5	1.7	.	0	0	.
Paraguay	2.7	34.6	1,584	0	0	0
Peru	2.8	41.0	2,308	0	1	1
Philippines	2.2	27.1	1,070	0	0	0
Poland	5.4	38.3	2,447	1	1	1
Portugal	1.9	31.2	2,086	0	0	0
Puerto Rico	.	40.6	2,144	.	1	0
Qatar	1.6	80.5	30,387	0	1	1
Republic of Korea	4.5	21.4	854	1	0	0
Republic of Moldova	3.3	18.5	.	1	0	.
Romania	4.4	25.6	1,182	1	0	0
Russian Federation	3.8	44.1	.	1	1	.
Rwanda	0.3	2.1	547	0	0	0
Runion	2.9	23.5	.	1	0	.
Samoa	.	12.9	.	.	0	.
Sao Tome and Principe	.	13.5	820	.	0	0
Saudi Arabia	2.3	21.3	2,231	0	0	0
Senegal	1.8	17.2	1,259	0	0	0
Serbia and Montenegro	.	.	.	.	.	.
Sierra Leone	0.4	12.6	656	0	0	0

Continued on next page...

... table 1 continued

Variable Names	Educ -ation	Urban -ization	GDP per cap.	High educ.	High urban.	High GDPpc
Singapore	2.7	99.4	2,219	0	1	0
Slovakia	8.1	30.0	.	1	0	.
Slovenia	5.9	19.9	.	1	0	.
Solomon Islands	.	3.8	.	.	0	.
Somalia	.	12.7	1,057	.	0	0
South Africa	4.0	42.2	2,535	1	1	1
Spain	3.8	51.9	2,189	1	1	0
Sri Lanka	3.4	15.3	1,253	1	0	0
Sudan	0.3	7.5	821	0	0	0
Suriname	.	46.9	.	.	1	.
Swaziland	1.2	2.0	721	0	0	0
Sweden	6.7	65.7	6,739	1	1	1
Switzerland	8.8	44.4	9,064	1	1	1
Syrian Arab Republic	0.8	32.7	2,409	0	0	1
Taiwan	3.0	21.6	916	1	0	0
Tajikistan	4.1	29.4	.	1	0	.
Thailand	2.0	16.5	817	0	0	0
Timor-Leste	.	9.9	.	.	0	.
Togo	0.3	4.4	574	0	0	0
Trinidad and Tobago	5.0	21.4	3,674	1	0	1
Tunisia	0.6	32.3	1,115	0	0	0
Turkey	1.1	24.8	1,623	0	0	0
Turkmenistan	.	45.0	.	.	1	.
Uganda	0.9	2.8	687	0	0	0
Ukraine	4.4	35.5	.	1	0	.
United Arab Emirates	0.8	54.5	15,798	0	1	1
United Kingdom	6.4	79.0	6,939	1	1	1
United Republic of Tanzania	1.2	3.5	424	0	0	0
United States of America	8.4	64.2	9,561	1	1	1
Uruguay	4.3	77.9	4,659	1	1	1
Uzbekistan	.	28.9	.	.	0	.
Vanuatu	.	8.8	.	.	0	.
Venezuela (Bolivarian Republic o	1.6	47.3	7,462	0	1	1
Viet Nam	2.5	11.6	658	0	0	0
Yemen	0.0	5.8	911	0	0	0
Zambia	1.8	11.5	661	0	0	0
Zimbabwe	1.6	10.6	701	0	0	0

Figure I. Demeaned  $\ln(\text{lights})$

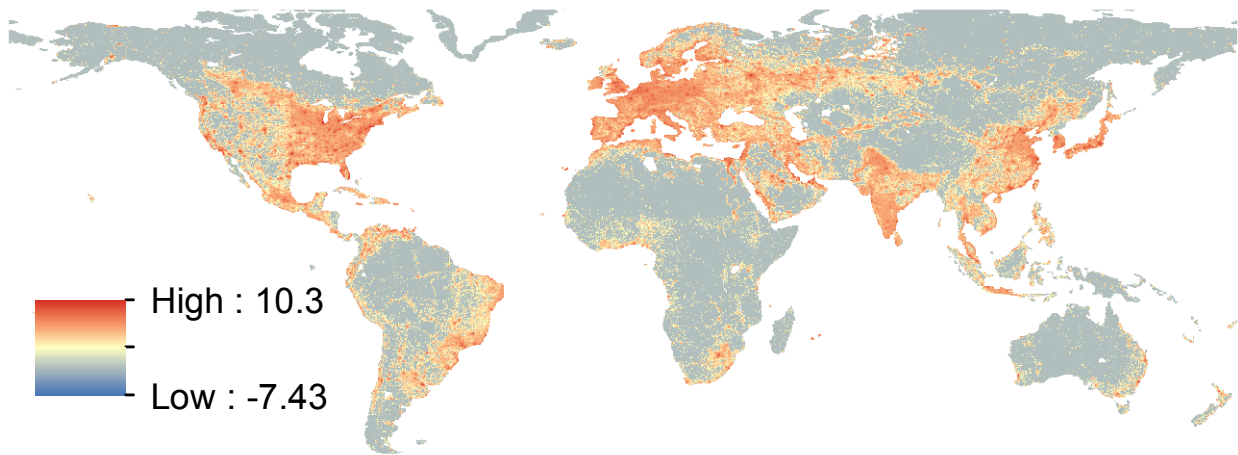


Figure II.A. Demeaned predicted  $\ln(\text{lights})$  without fixed effects

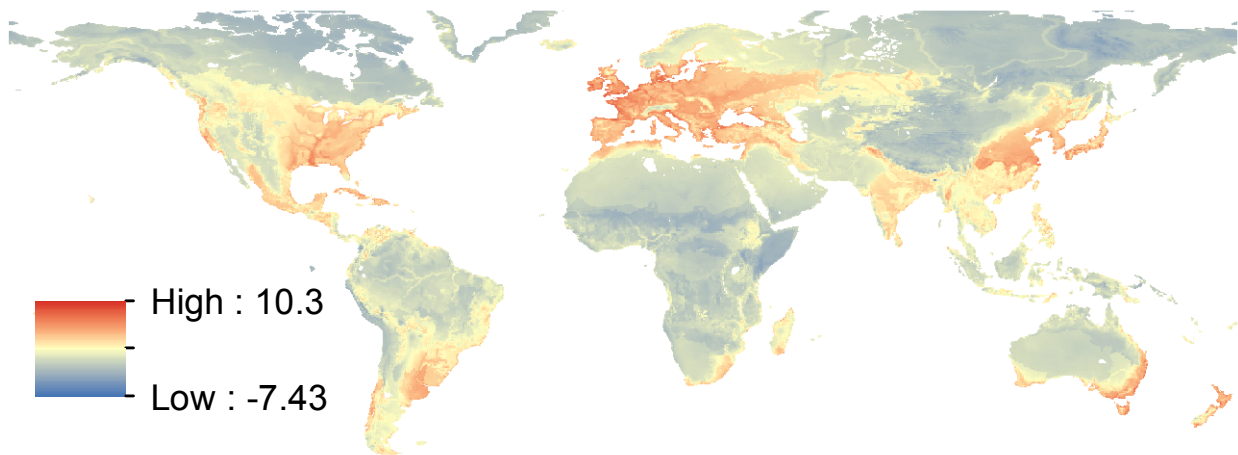
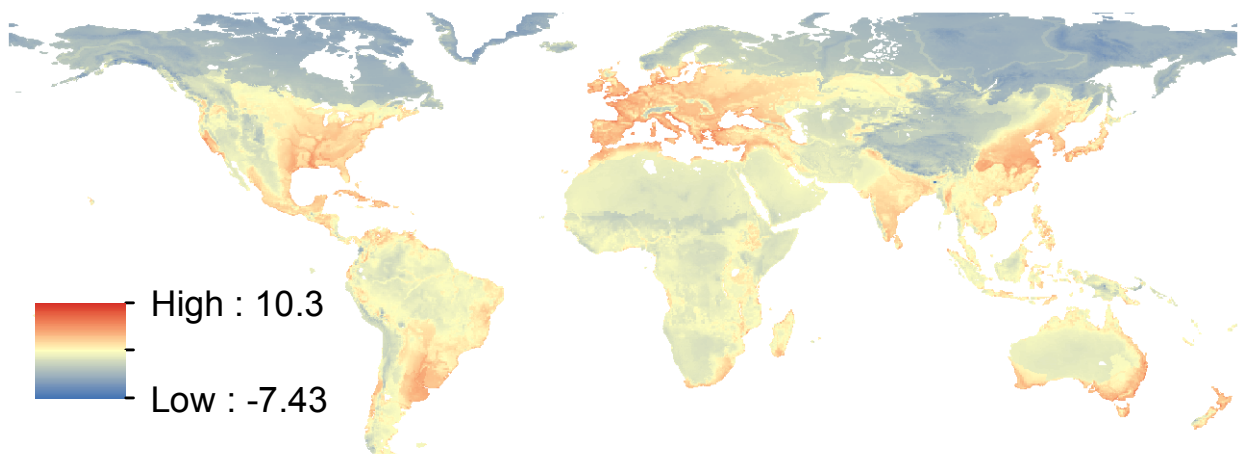
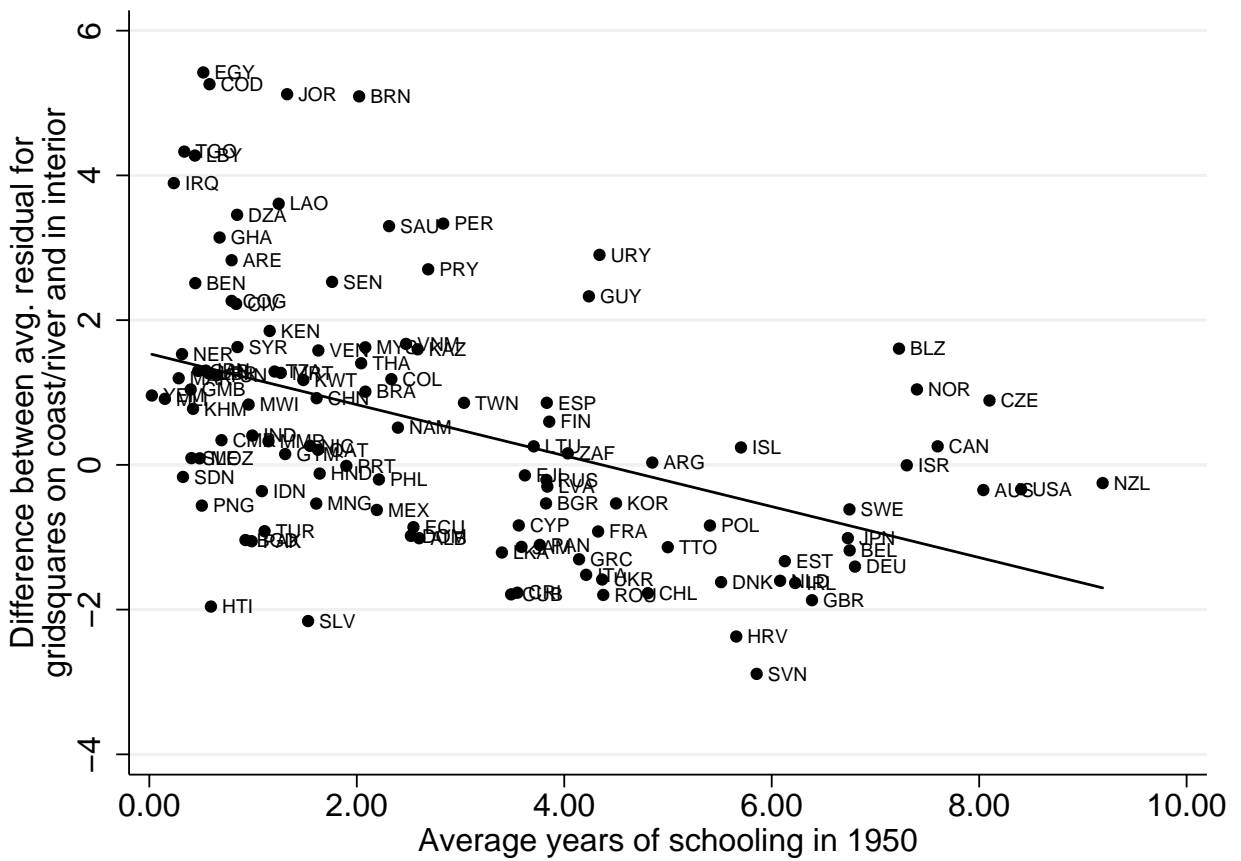


Figure II.B. Demeaned predicted  $\ln(\text{lights})$ , fixed effects specification with fixed effects suppressed



Notes: Each map reports demeaned predicted values from a regression of  $\ln(\text{lights})$  on all geographic variables. In Panel B, the regression is run with country fixed effects, but predicted values are calculated setting those fixed effects to zero.

Figure III. Difference between average coastal/river and interior residuals by years of schooling in 1950



Notes: ln(lights) are first regressed on all geographic variables in the global sample with country fixed effects, and predicted values are calculated suppressing the fixed effects. These predicted values are averaged separately within each country for two groups: cells within 25 km of a coast or navigable river and those farther away. The difference between these averages is the height of each point.

Figure IV.A. Global transport costs and high education country literacy rates

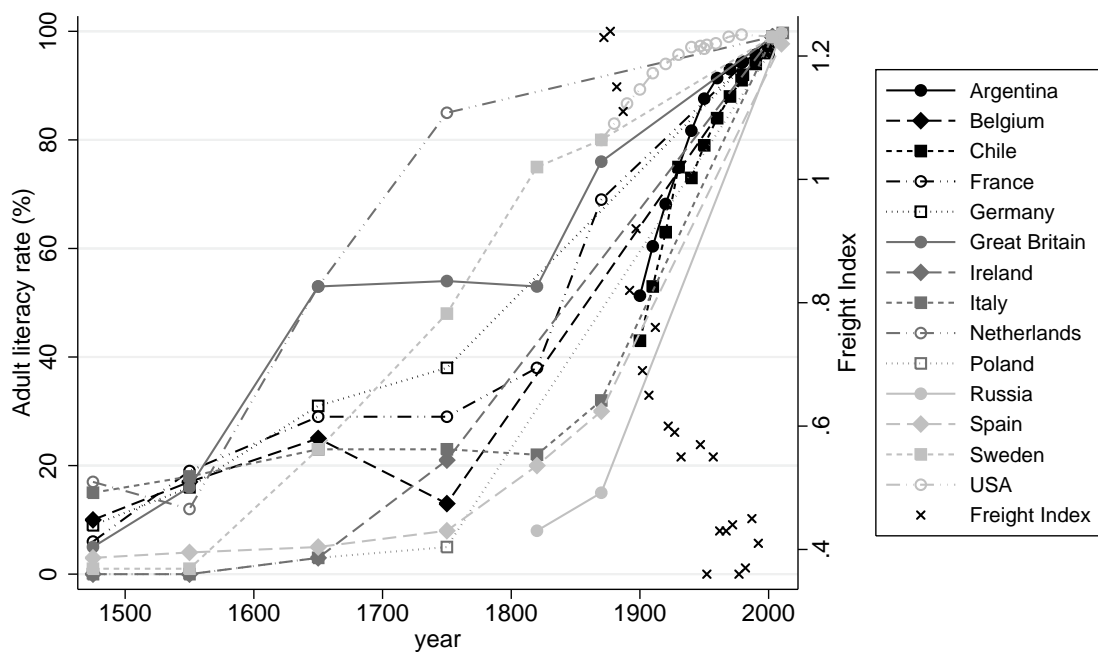
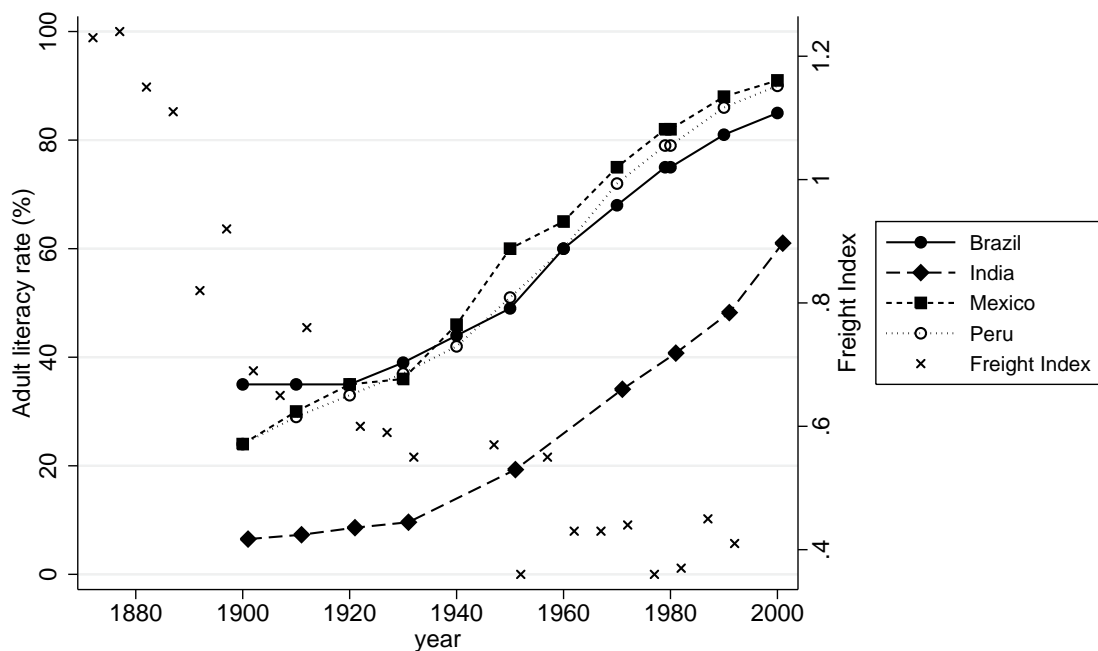


Figure IV.B. Global transport costs and low education country literacy rates



Notes: The global real freight index is from Mohammed and Williamson (2004). Periods including world war years are omitted. Literacy rates for all countries except India are from Roser and Ortiz-Ospina (2016). Literacy rates for India are from UNESCO (1957) Ministry of Human Resource Development (1987), and World Bank. (2015)

Figure V.A. Years of schooling in 1950: total SSR

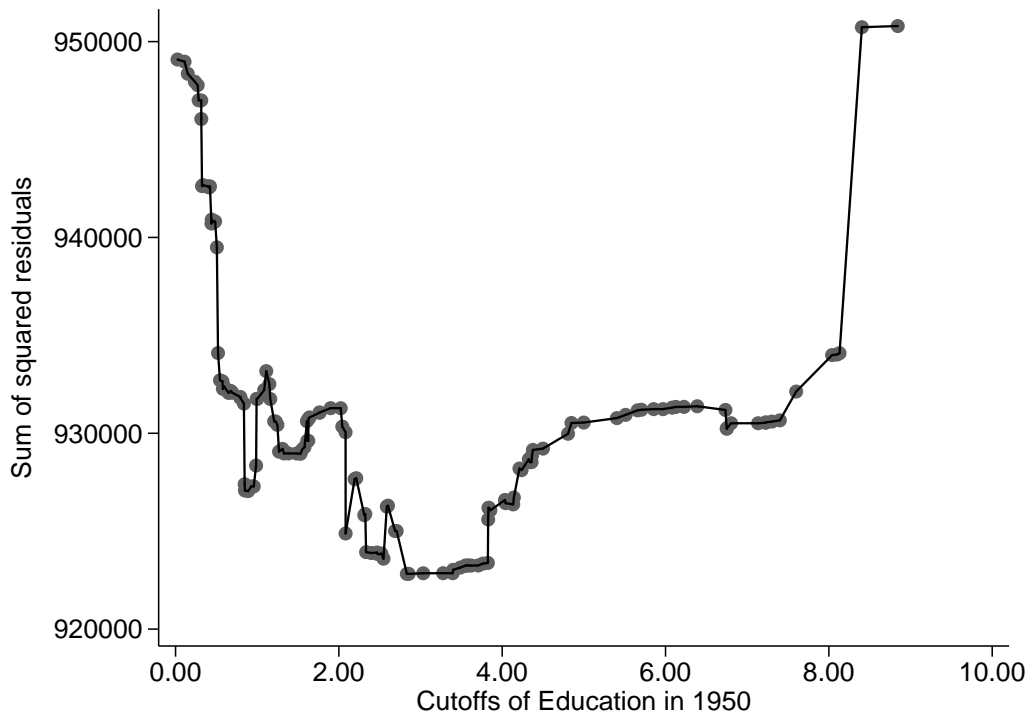


Figure V.B. Urbanization in 1950: total SSR

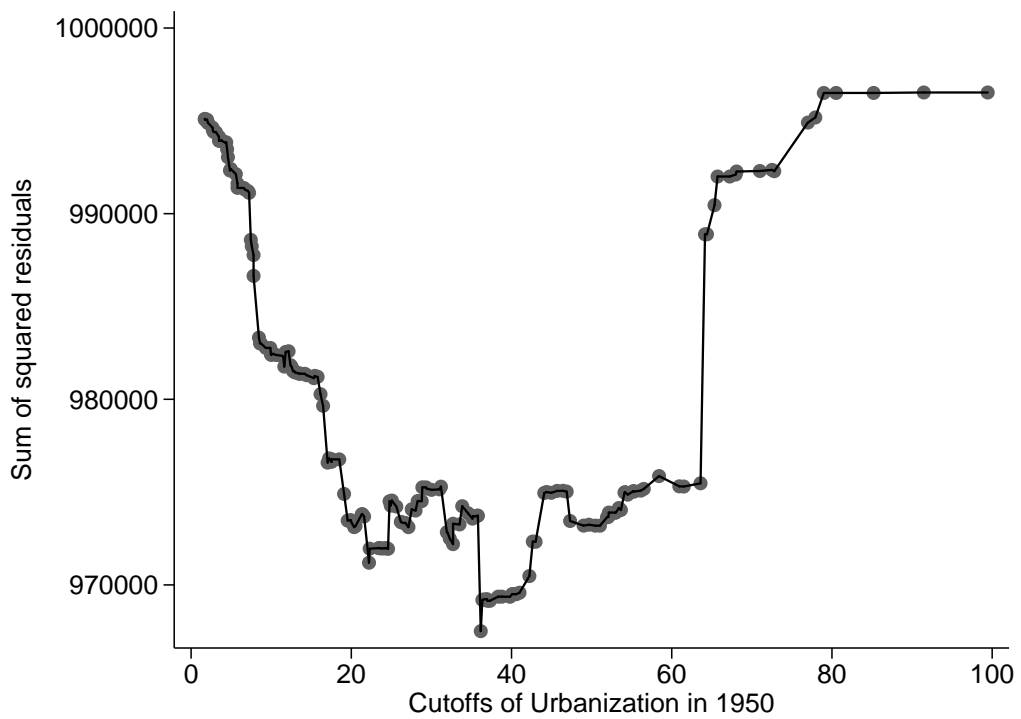
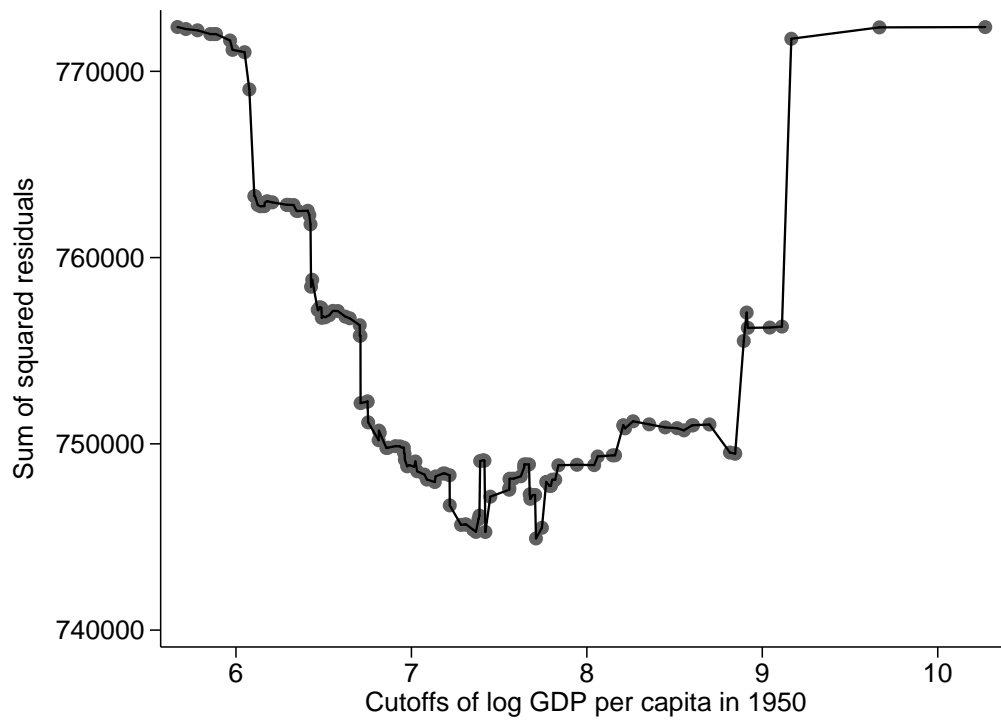
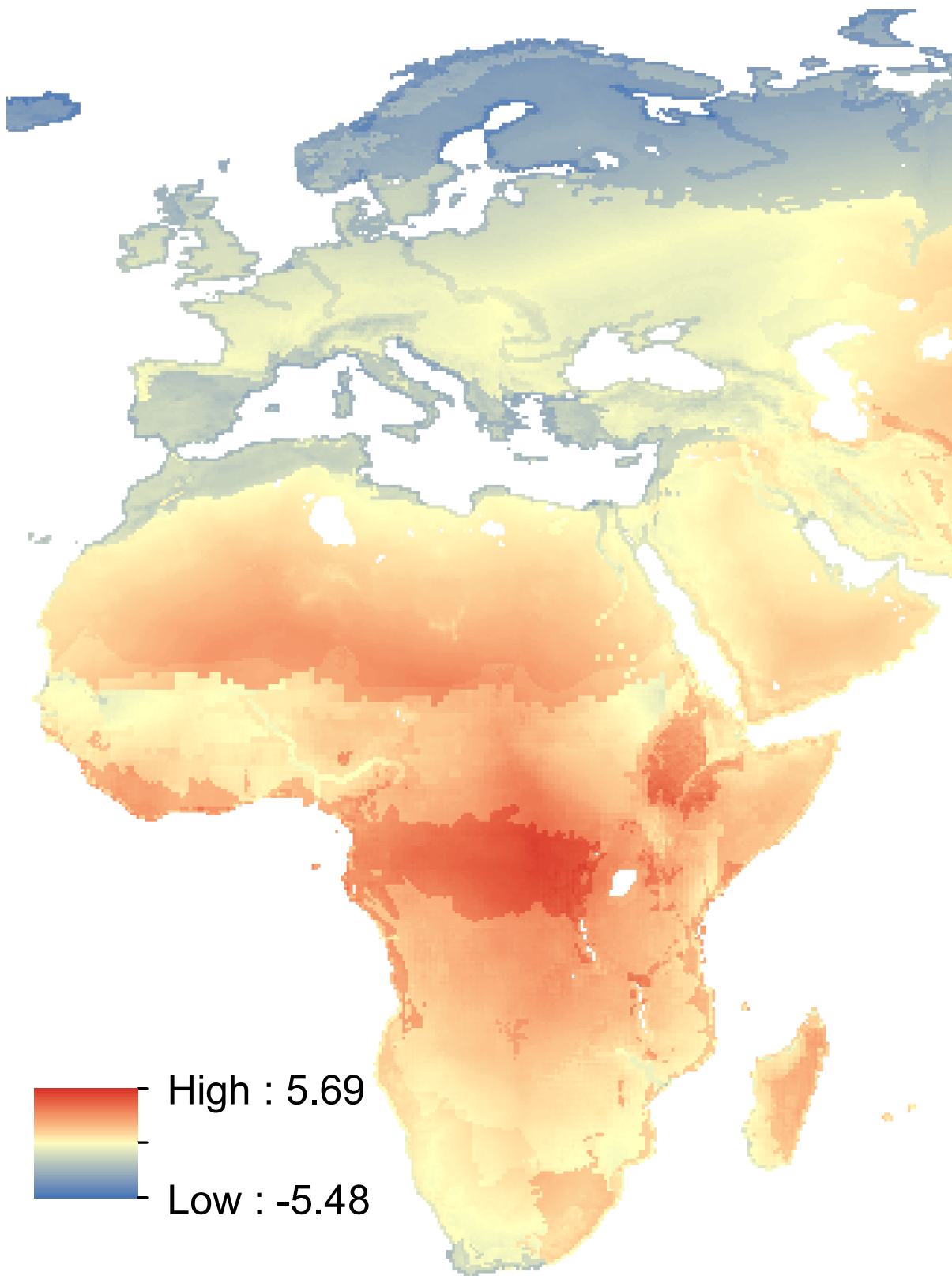


Figure V.C. GDP per capita in 1950: total SSR



Notes: In each Panel, the vertical coordinate of each point represents the sum of squared residuals summed across two regressions on two disjoint samples, one each for countries above and below the cutoff of the cut variable specified on the horizontal axis. Each regresses  $\ln(\text{light})$  on all geographic variables and country fixed effects. Each point corresponds to an individual country in the sample (i.e. the exercise is run for each country's value of the cut variable and ranked by the cut variable).

Figure VI. Demeaned difference between high and low predicted lights with fixed effects suppressed



Note: This map shows fitted values of  $(\alpha X_{ic}^A \beta_A + \gamma X_{ic}^T \beta_T)$  from equation (3).



Figure VII. Gini coefficient of lights by years of schooling in 1950

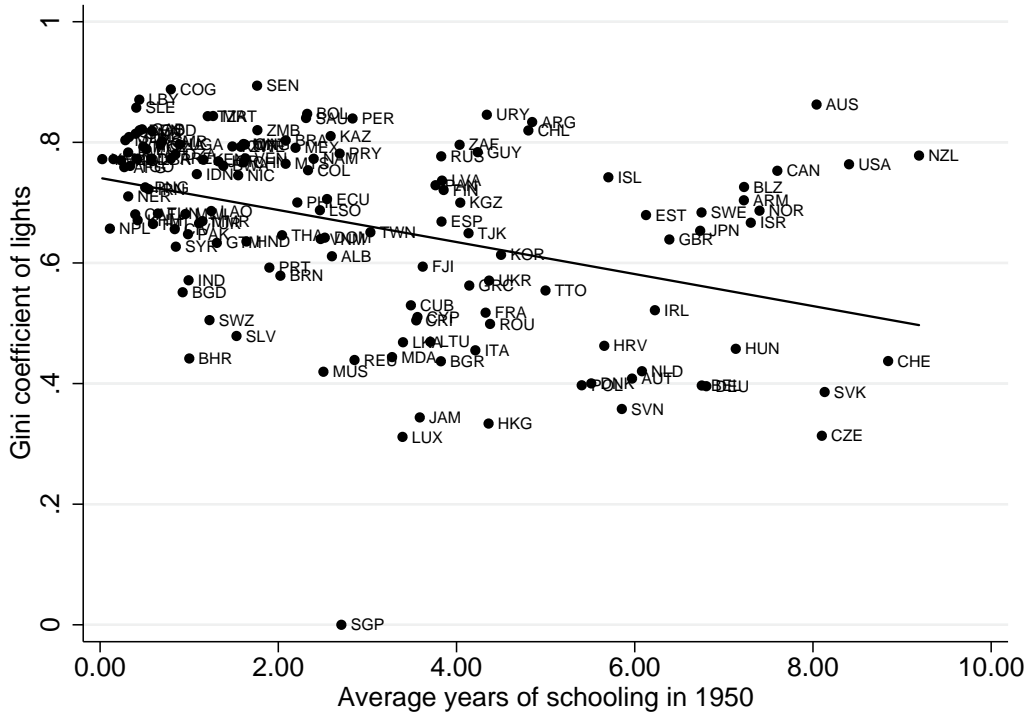
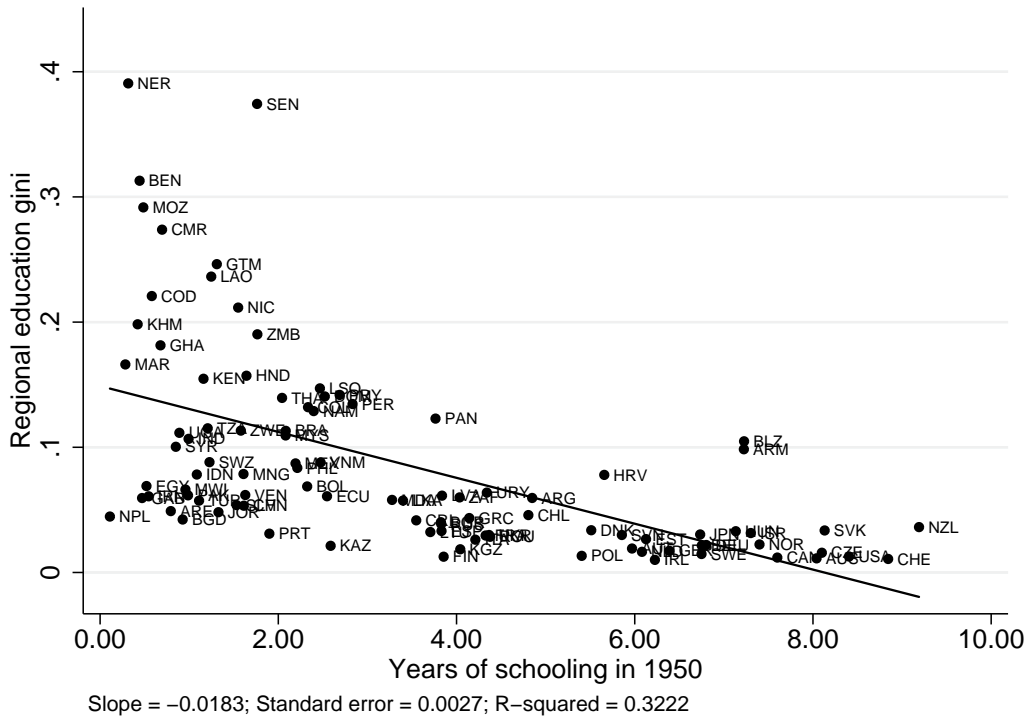


Figure VIII. Population-weighted regional education Gini by years of schooling in 1950



# Web Appendix (not for publication)

## Online Appendix B. The Model

### Setup

We consider a country consisting of two regions, which we call coast ( $c$ ) and interior ( $i$ ) for exposition. Workers in each region potentially produce food ( $f$ ) with decreasing returns and a manufactured good ( $m$ ) with external economies of scale subject to congestion. In both sectors, workers are paid their average product. We assume that (in the “long run”) workers are free to move between regions and among sectors such that utility is equalized. The economy is closed to the outside world.

For either region  $r \in \{c, i\}$ , in the food sector average product is  $A_f L_{fr}^{-\beta}$  and total production is  $A_f L_{fr}^{1-\beta}$ , where  $A_f > 0$  reflects productivity and  $L_{fr}$  is the amount of labor in the food sector in the region. Food sector productivity is the same across regions. Decreasing marginal productivity of labor in agriculture, due to a fixed supply of land, is reflected in the parameter  $1 > \beta > 0$ . The urban sector produces the manufactured good. Average product per unit of labor in the urban sector is  $A_{mr}(v + L_{mr}^\epsilon)$ , where the  $v$  allows nonzero output by the marginal worker as  $L_{mr} \rightarrow 0$ , and  $\epsilon > 0$  represents agglomeration economies increasing productivity in the presence of more workers. Each worker is endowed with one unit of time, to be used for labor and commuting in the city as in standard urban models (see Duranton and Puga, 2004, for a review), so labor supplied per worker is  $1 - tL_{mr}$ , where  $0 < t \ll 1$  represents unit-distance commuting costs in the city.<sup>1</sup> Average product per worker in the city is thus

---

<sup>1</sup> Following Duranton and Puga (2004), each worker is endowed with 1 unit of time, and lives on a lot of fixed size 1, with zero opportunity cost, in a two sided linear city. Working time is  $1-4tu$  where  $u$  is distance from the city center and  $4t$  unit commuting costs. Given a wage rate  $w$ , income after commuting is  $w(1-4tu)$ . Residents pay rents that differ by distance from the city center, and rental income is redistributed as an (equal) dividend to all city residents. Since the lots have zero opportunity costs, rent at the city edge ( $u_{max}=L/2$ ) is zero. Net income of the person at the city edge before rent income transfers is  $w(1-4tu_{max}) = w(1-2tL)$  and that equals net income of any other person  $w(1-4tu)-R(u)$ , where  $R(u)$  is rent at location  $u$ . Thus  $R(u) = 4tw(L/2-u)$ , so integrating across the whole city, total rents are  $twL^2$ , and rents remitted per worker are  $twL$ . Thus, total (labor plus rental dividend) income per person in the city net of rent and commuting time is  $W=w(1-tL)$  and total income is  $w(1-tL)L$ . This corresponds to effective labor supply in the city being  $L(1-tL)$ .

$A_{mr}(v + L_{mr}^\epsilon)(1 - tL_{mr})$  . The size of the manufacturing labor force that maximizes this is a solution to  $\epsilon L_{mr}^{\epsilon-1} - (1 + \epsilon)tL_{mr}^\epsilon - vt = 0$  . As long as  $\epsilon < 1$  , any  $L_{mr}$  fulfilling this expression will be a unique maximum, but further restrictions on the parameter space are required to guarantee the existence of an interior maximum.

Food, which is traded costlessly between regions as in standard new economic geography models, is the numeraire good. Preferences are such that each worker consumes a fixed amount of food  $\lambda$  , and spends the remainder of her value of net average product on the manufactured good. Welfare for any person in region  $r$  is then equivalent to consumption of the manufactured good,  $(W_r - \lambda)/p_{mr}$  , where  $W_r$  is net wage income and  $p_{mr}$  is the price of the manufactured good in region  $r$  .

A fixed national population of workers  $L$  is free to move between sectors and regions, so that

$$L_r = L_{fr} + L_{mr}, \quad r = c, i \quad (\text{B1a})$$

$$L = L_c + L_i. \quad (\text{B1b})$$

Real income equalization across sectors within each region (assuming both sectors exist in the region) implies:

$$A_f L_{fr}^{-\beta} = p_{mr} A_{mr} (v + L_{mr}^\epsilon)(1 - tL_{mr}) , \quad r = c, i . \quad (\text{B2})$$

Free migration equalizes per person welfare (i.e. manufacturing consumption), across regions so that:

$$\frac{A_f L_{fc}^{-\beta} - \lambda}{p_{mc}} = \frac{A_f L_{fi}^{-\beta} - \lambda}{p_{mi}} . \quad (\text{B3})$$

The model is closed by imposing equilibrium in goods markets. How that is done depends on whether there is inter-regional trade or not and whether regions absolutely specialize or not.

There are three different types of closure relating to three types of equilibria.

### *Autarkic equilibrium*

If there is no trade between regions, clearing of the manufacturing good market in each region

requires total regional demand equals regional supply, or:

$$L_r(A_f L_{fr}^{-\beta} - \lambda) = p_{mr} A_{mr} (\nu + L_{mr}^\epsilon) (1 - t L_{mr}) L_{mr}, \quad (\text{B4a})$$

or alternatively, using the agricultural market

$$\lambda L_r = A_f L_{fr}^{1-\beta}. \quad (\text{B4b})$$

Given  $L, A_f, A_{mi}, A_{mc}, \beta, \epsilon, \lambda, t, \nu$ , the eight equations implied in (B1)-(B3) and (B4b) specify equilibrium in the distribution of labor and the price of the manufactured good wherever it is produced  $(L_{mc}, L_{mi}, L_{fc}, L_{fi}, L_c, L_i, p_{mc}, p_{mi})$ .<sup>2</sup>

### *Trade equilibrium with both regions producing manufactures*

If transport costs are sufficiently low, both regions can trade *and* produce manufactures if they have differential comparative advantage. If they are identical and have sufficient manufacturing scale beyond the point where average product is maximized, then there will be no trade. We generally designate one region to be slightly better at manufacturing, in order to allow trade equilibria when trade costs are sufficiently low. We maintain the assumption that food can move costlessly between regions, and further assume that there is an iceberg cost  $\tau$  that applies to movement of the manufactured good between regions. Trade will occur when the autarky price ratio of manufactured goods is outside the range  $(1 - \tau, \frac{1}{1-\tau})$ . When there is trade, and no absolute specialization in either region, the within-region goods market clearing conditions (B4a) and (B4b) are replaced by an inter-regional goods market clearing condition and an arbitrage condition. We specify food market equilibrium and leave the manufactured good as a residual:

$$\lambda L = A_f L_{fc}^{1-\beta} + A_f L_{fi}^{1-\beta}. \quad (\text{B5})$$

Assigning manufacturing comparative advantage to the coastal region, in practice it will always be the manufacturing exporter in this class of equilibria, although we check for equilibria where the interior is exporting manufactures as well. The prices of the manufactured good in the two regions are related by an arbitrage condition:

---

<sup>2</sup> To see that these represent eight equations, note that (B1a), (B2) and (B4b) each must be fulfilled for each region.

$$p_{mi} = p_{mc}(1 - \tau)^{-1}, \quad (\text{B6})$$

for  $\tau$  the trade cost. Given  $L, A_f, A_{mi}, A_{mc}, \beta, \epsilon, \lambda, t, \tau, v$ , the eight equations embedded in (B1)-(B3), (B5) and (B6) specify an equilibrium in the distribution of labor and the price of the manufactured good in the two regions.

### *Specialization equilibrium*

Finally, there are equilibria where all manufactured goods are produced in one region, Since that one region can be either the coast or the interior, we consider the two corresponding types of specialized equilibria in the solution mechanism below. It can be defined by slightly adjusting the trade equilibria without specialization above, setting manufacturing employment in one region to zero and removing equation (B2) for that region.

### *Solving the model*

For any given set of parameters, we solve the model as follows. We have 3 types of possible equilibria: autarkic, trade without absolute specialization, and trade with absolute specialization, with each of the last two available in two variants, one for each region exporting manufactures. We pick an allocation of population to the interior region (with the coastal population being the remainder of national population) and suspend equation (B3) (equalizing welfare across regions). We then use the remaining equations in each type of equilibria to solve for all remaining variables. From these we calculate the consumption per worker in each region (the LHS and RHS to (B3)). Then, for each equilibrium type, we plot these two regional consumptions as a function of (say) interior population. Their intersections are equilibria.

We limit attention to stable equilibria, subject to two stability conditions. Type 1 stability is with respect to small changes in the population allocation across regions, assuming within-region labor markets and all goods markets always clear (“instantly”). Equilibria are stable as long as per-person manufacturing consumption in the interior (coast) is a declining (increasing) function of  $L_i$  (i.e., there are overall diseconomies to regional size). Type 2 stability is with respect to perturbations within regions, focused in particular on adding a small number of workers to a

non-existent or small manufacturing sector within a region. For example, we perturb a small number of workers out of food production in, say, the interior region and move them into manufacturing in the interior. We keep regional populations fixed, but allow intra- and inter-regional goods markets and coastal labor markets to clear (“instantly”). Equilibria are unstable if interior manufacturing workers then have higher consumption than interior food workers. They are stable if the reverse is the case. This condition implicitly assumes slower than instant adjustment in inter-regional labor markets. We note however that in practice in all examples we solved, in this type of experiment, under stability, interior food workers have the highest welfare (manufacturing consumption) of workers anywhere and interior manufacturing workers the lowest; and vice versa under instability.

Details of the solution method as applied to the examples below are given below. In general, for any  $\tau$  there will either be an autarky or non-specialization equilibrium but not both, with higher  $\tau$  having autarky. There may or may not be specialization equilibrium in one or both regions, with the likelihood of stable specialization equilibria enhanced as  $\tau$  falls.

#### *Analysis of possible equilibria*

As with many similar models, there is no closed form solution. We illustrate the relevant properties with several examples. Our baseline parameter set is

$$\{L = 10,000,000; v = 0.5; \epsilon = 0.08; t = 7 \times 10^{-8}; \beta = 0.25; \lambda = 0.018; A_f = 1; A_{mi} = 1; A_{mc} = 1.01\}.$$

With these parameters, average manufacturing product peaks at a city population of about 969,100. Note the regions are not precisely symmetrical, so that if trade is feasible, it will occur because the coast has a slight comparative advantage in manufacturing production (with a higher  $A_m$ ). We consider all the specialization and non-specialization equilibria that exist and are stable for values of transport costs,  $\tau$ , from 0.99 to 0.01. There are two types of specialization equilibria: the coast producing only food and the interior producing only food.

Non-specialization implies autarky at high  $\tau$ ; while at lower  $\tau$ , when stable non-specialized equilibria exist, they are trade equilibria.

Our focus is on how these patterns change in the transition from low ( $A_f = 1$ ) to high ( $A_f = 1.5$ ) agricultural productivity. When  $A_f$  is low, at least with non-specialized manufacturing, there is insufficient manufacturing employment to support a city populous enough to exploit scale economies in any one region. When  $A_f$  is high, much less labor is needed to produce the required food, so there is a lot more manufacturing employment to allocate between the two regions.

Figure B1 shows the stable specialization and non-specialization equilibria when  $A_f = 1$  for different costs of trade,  $\tau$ , as graphed against the population of the interior region. The two outer prongs correspond to the two sets of specialization equilibria: one where the interior produces only food and one where the coast does that. When do these specialization equilibria exist and when are they stable? They are (type 2) unstable when trade costs are high ( $\tau > 0.4$ ). In that case, workers who begin manufacturing in the region with no existing manufacturing will be better off, because high trade costs make them profitable in their home market despite the limited scale. When  $\tau$  is lower, the scale effect advantage of the existing manufacturing sector in the foreign region dominates any trade cost advantage in starting manufacturing in the home region to sell in the home market. Starting a small scale manufacturing operation is not profitable for those workers. In our example with  $A_f = 1$ , the allocation of workers to manufacturing in the specialized region is less than the city size that maximizes average product. Thus stable specialization equilibria persist as  $\tau$  falls to 0.

The middle prong represents non-specialized equilibria. At high  $\tau$ , they are autarkic and stable. While manufacturing scale is low in both regions, trade is too costly for workers to profitably move to take advantage of scale economies in one region. As trade costs fall, it becomes potentially profitable to trade. However, once it is profitable to trade it is also profitable to enhance manufacturing scale in one region relative to the other. Thus at these parameter values, the only stable equilibria when  $\tau$  is low have manufacturing located in a single region, with the other region producing only food.

In Figure B2 we turn to our second case, where agricultural productivity  $A_f$  has risen to 1.5, allowing more workers to enter manufacturing. As in the low agricultural productivity case, specialization equilibria are not stable at the highest  $\tau$ . As in the previous case, when trade costs are high, the only non-specialized equilibrium is autarky. However, what is new in this case is that, as trade costs fall and autarky becomes unstable, a trade equilibrium without specialization now becomes stable. In this equilibrium, both regions have enough manufacturing scale that shifting a small number of manufacturing workers one way or another is not profitable for workers. Given our assumption of a slight coastal comparative advantage in manufacturing, the coast exports manufactured goods in this equilibrium, but such goods are produced in both regions.

Figure B3 shows the existence of the different classes of equilibria in  $(A_f, \tau)$  parameter space for values of  $A_f$  from 1 to 2.3 and  $\tau$  from 0.01 to 0.6. In the upper left of the figure, where agricultural productivity is high and trade costs are low, the only equilibrium is one in which manufacturing takes place in both regions (area G). At this equilibrium, the coast has a comparative advantage in manufacturing, so it exports this good. Maintaining low trade costs but lowering agricultural productivity, there are a series of different equilibrium configurations: in area B, there are two equilibria: one with trade and manufacturing taking place in both regions, and one with trade and manufactures produced only on the coast. In area C, there are three equilibria: the two just listed as well as one in which manufactures are produced only in the interior. For even lower agricultural productivity, maintaining low trade costs, are only two equilibria, those where manufactures are produced in a single region (area D). Raising trade costs (i.e. moving from left to right in the figure), autarky appears as a possible equilibrium, although there are also possible equilibria where manufactures are produced in one or both regions (areas E and F). Finally, with high enough trade costs, the only possible equilibrium is autarky (area A).

Figure B3 demonstrates the path dependence we explore empirically in the paper. Circa 1800, all of the world was in the high trade cost and low agricultural productivity autarkic equilibrium at



the lower right in area A. In the countries that developed early, the historical paths of rising agricultural productivity and transport costs that did not fall too quickly maintained the economy in areas A, E, or F, in all of which there was a stable autarkic equilibrium. Although we do not model persistence explicitly, our assumption is that in such areas, an economy that was formerly at the autarkic equilibrium will remain there. Finally, with further declines in transport costs, these early developing economies moved into areas B, C, or G, all of which lack an autarky equilibrium, but do feature an equilibrium with non-specialized trade. Again, in the absence of an explicit model of persistence, we assume that when the autarkic equilibrium disappeared, these economies naturally moved to the non-specialized trade equilibrium, which featured very similar distributions of population and economic activity between regions.

Today's developing world followed a different path, with the fall in transport costs relative to the rise in agricultural productivity occurring earlier. In this case, countries entered area D in the figure, where neither autarky nor non-specialized trade is a stable equilibrium. Manufactures will be produced in only one region, and it is natural to expect that this would be the coast, where productivity is higher. Once this specialization equilibrium has been entered, persistence would mean that further increases in agricultural productivity (moving into areas C and B) would not move the economy away from the equilibrium in which manufactures are produced in only one region. Thus, by the time of the mid- to late-20th century agricultural revolution in the developing world, urbanization (and manufacturing activity) is more concentrated in a smaller set of regions with better access to world markets.

#### *Algorithm to solve the model*

The algorithm begins by creating a vector of all possible interior populations and a corresponding vector of all possible coastal populations based on  $L$  and  $L_i$  such that:

$$L_c = L - L_i$$

To find equilibria, we cycle through these vectors in a loop. As a result, the following steps are carried out for a fixed population allocation between the interior and coast.

First, we create another vector of all possible  $L_{fi}$  values, ranging from 0 (no agriculture in the interior) to the entire interior population (everyone is employed in agriculture in the interior). Then, a corresponding vector is created of  $L_{fc}$  values. This vector is calculated based on food needs of the entire population, solving the following equation based on the text:

$$L_{fc} = \left( \frac{L\lambda - A_f L_{fi}^{1-\beta}}{A_{fc}} \right)^{\frac{1}{1-\beta}}$$

We subsequently cycle through these vectors in another loop, nested within the previous one. Consequently, the following steps are carried out for fixed regional agricultural labor forces *and* regional population allocations.

Within these two loops, we begin to find equilibria. If  $L_{fc} < L_c$  and  $L_{fi} < L_i$  (both regions have some manufacturing labor force), then we calculate  $L_{mc}$  and  $L_{mi}$  using the following equation:

$$L_{mr} = L_r - L_{fr}$$

Now that we have  $L_i$ ,  $L_c$ ,  $L_{fi}$ ,  $L_{fc}$ ,  $L_{mi}$ , and  $L_{mc}$ , we calculate prices in each region based on the average product of agriculture and manufacturing in each region (so that wages are equalized across sectors within each region):

$$p_{mr} = \frac{A_f L_{fr}^{-\beta}}{A_{mr} L_{mr}^{\epsilon} (1 - t L_{mr})^{1+\epsilon}}$$

Next, we determine which of the two regions is exporting manufactured goods. This can be determined by checking which of the two regions produces less food than its population requires. Then, we check if the inter-regional goods market clears by checking if prices in the exporting region are equal to prices in the importing region, adjusted for the iceberg trade cost  $\tau$ . For most allocations of  $L_{fc}$  and  $L_{fi}$  this condition is not met, and the algorithm simply ends at this point and starts at the next allocation of  $L_{fc}$  and  $L_{fi}$ .

However, if this condition is met, manufacturing consumption per capita is calculated for each region. In the exporting region, manufacturing consumption is calculated by subtracting the quantity of manufactured goods that are exported from the total quantity of manufactured goods

produced in the region, divided by the region's population. The quantity of exported manufactured goods is determined utilizing the fact that the inter-regional goods market clears. As a result, exported manufactured goods necessarily equals the quantity of imported food divided by the price of manufactured goods in the region. The quantity of imported food is determined by the gap in the region's food needs and food production in the region. In the importing region, manufacturing consumption per capita is equal to total manufactured goods produced plus the quantity of imported manufactured good, divided by regional population. Analogously to the previous case, the value of imported manufactured goods is determined by the quantity of exported food divided by price of manufactured goods in that region.

Manufacturing consumption in each region is not necessarily equal at this point. As such, this data point is recorded as a "possible equilibrium," where every equilibrium condition is met *except* that manufacturing consumption is equal across regions. If manufacturing consumption is also equal across regions, then this data point is recorded as an "equilibrium."

If  $L_{fc} = L_c$  or  $L_{fi} = L_i$ , then we have a corner solution where one region has no manufacturing labor force. In this case,  $L_{mc}$  and  $L_{mi}$  are calculated just like before. Prices in the region that has a manufacturing labor force are calculated using the average products of agriculture and manufacturing just like above. However, prices in the region that has no manufacturing labor force are now determined solely by adjusting the other region's prices by the iceberg trade cost. Next, manufacturing consumption per capita is calculated for each region. The region that has a manufacturing labor force obviously exports manufactured goods in this case. Manufacturing consumption per capita in this region is equal to total manufactured goods minus exported manufactured goods (determined just as before) divided by regional population. In the region with no manufacturing labor force, manufacturing consumption is just equal to imported manufactured goods divided by regional population.

This data point is recorded as a possible equilibrium. If manufacturing consumption is also equal across regions, then this data point is recorded as an equilibrium. This ends the loop through possible values of  $L_{fc}$  and  $L_{fi}$ .

Next we address the endogenous no-trade equilibria where, as the name might imply, there is no trade between the two regions. First we check if the current (fixed) population allocation is feasible in that each region can feed itself without any trade. Then, we calculate  $L_{fc}$  and  $L_{fi}$  based on each region's individual food needs, remembering that there is no trade between regions. As a result:

$$L_{fi} = \left( \frac{L_i \lambda}{A_f} \right)^{\frac{1}{1-\beta}}$$

$L_{mc}$  and  $L_{mi}$  are then calculated using regional population and agricultural labor force. Prices for each region are also calculated based on the average product of agriculture and manufacturing so that wages are equalized across sectors in a region. Next, we check if prices are in the “no-trade band” where no amount of trade is profitable, or:

$$\frac{p_{mi}}{1-\tau} \geq p_{mc} \quad \text{and} \quad \frac{p_{mc}}{1-\tau} \geq p_{mi}$$

If this condition is met, then there is no incentive for trade between regions. We then calculate manufacturing consumption per capita in each region as total manufactured goods divided by regional population. Since the regional populations are still fixed (i.e. no mobility between regions), manufacturing consumption is not necessarily equal across regions. This data point is recorded as a possible equilibrium; every equilibrium condition is met *except* that manufacturing consumption is equal across regions. If manufacturing consumption is also equal across regions, then this data point is recorded as an equilibrium. This ends the loop through possible values of  $L_i$ .

This ends the procedure for calculating equilibria for a set of parameters. Next, we check the stability of all “full equilibria,” where all markets clear and manufacturing consumption is equal across regions. We define two types of stability. “Type 1 stability” occurs when there is no incentive to move between regions. “Type 2 stability” occurs when there is no incentive to move industries *within* regions (i.e. move from agriculture to manufacturing).

To check type 1 stability, we take 100 people from the coast and move them to the interior. We allow for all other markets to clear, but manufacturing consumption is not equal between regions (i.e. calculate the resulting “partial equilibrium”). If the people who moved have lower consumption than before, then the equilibrium passes the stability check.

To check type 2 stability, we take 100 people from agriculture and move them into manufacturing *in a single region*, which puts the labor market in that particular region in disequilibrium. We then calculate the agricultural labor force in the other region based on the food needs of the entire population. We hold regional populations constant, so manufacturing labor forces are determined by regional population minus agricultural labor force. Next, since we still allow the labor market in the other region (where people did not initially change sectors) to be in equilibrium, we calculate prices in that region using the average product of manufacturing and agriculture like in earlier steps. Prices in the region where the labor market is in disequilibrium are then determined by prices in the other region adjusted for the iceberg trade cost. Wages in agriculture and manufacturing are finally calculated for that region. If the manufacturing consumption of manufacturing workers rises above that of their neighbors in agriculture within the region, then the equilibrium fails the stability check. The stability test is passed if manufacturing consumption of manufacturing workers in, for example, the interior is below food workers in the interior. We note that under stability in this experiment in all examples, food workers in the interior have the highest consumption nationally and manufacturing interior workers the lowest, and vice versa for instability.

## **Reference**

Duranton, Gilles, and Diego Puga, “Micro-foundations of urban agglomeration economies,” in *Handbook of Regional and Urban Economics*, Volume 5, Chapter 48, 2063-2117, Gilles Duranton, J. Vernon Henderson and William C. Strange eds. (Elsevier, 2004).

Figure B1. Equilibria with low agricultural productivity ( $A_f = 1$ )

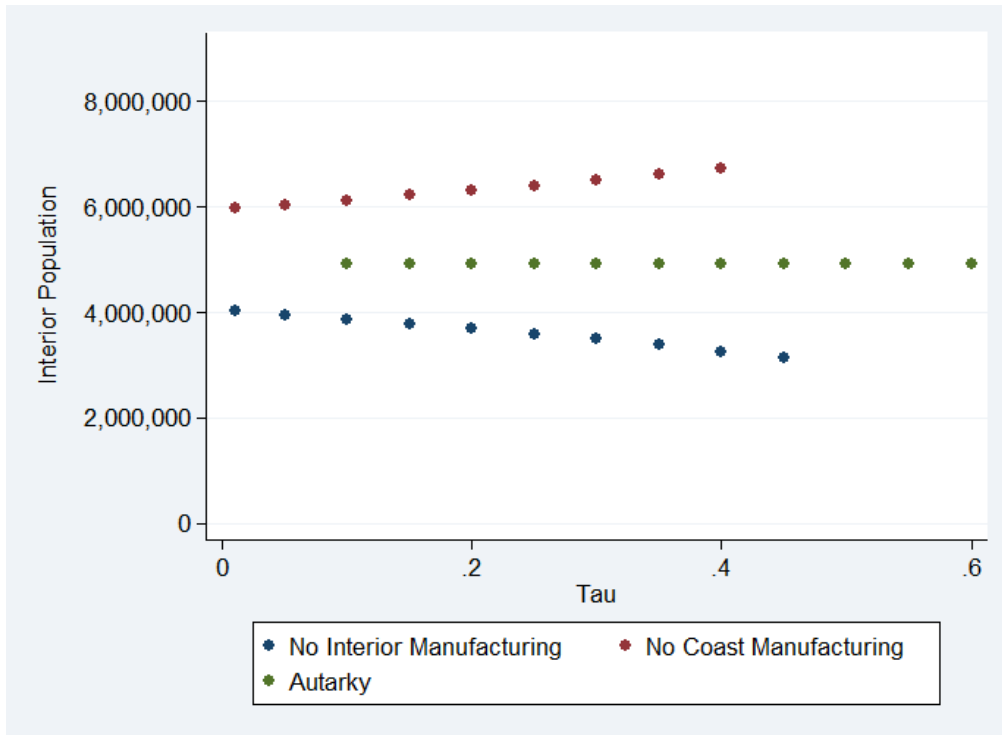


Figure B2. Equilibria with high agricultural productivity ( $A_f = 1.5$ )

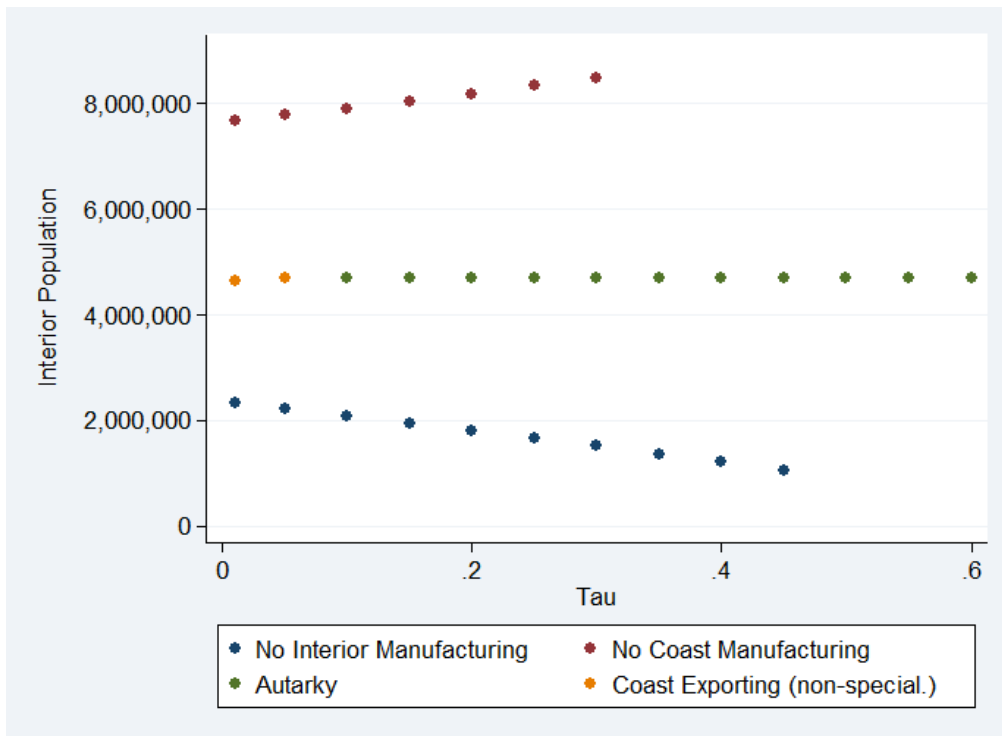
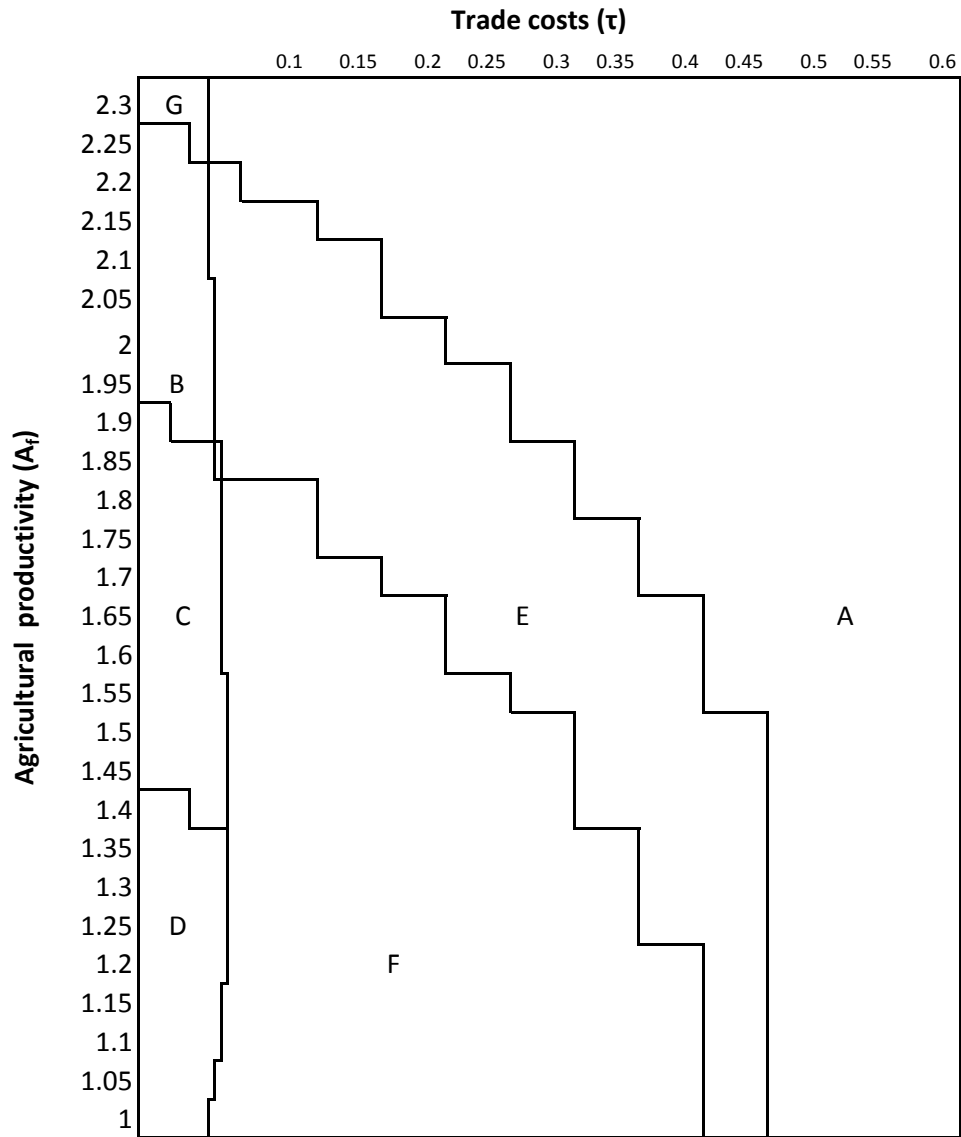


Figure B3. Equilibria in agricultural productivity-transport cost ( $A_f - \tau$ ) phase space



**Key** (number of equilibria in bold)

- A    **1**: autarky
- B    **2**: trade with manufacturing in both regions or solely in coast
- C    **3**: trade with manufacturing in both regions, solely in coast, or solely in interior
- D    **2**: trade with manufacturing solely in coast or solely in interior
- E    **2**: autarky or manufacturing solely on coast
- F    **3**: autarky or trade with manufacturing solely in coast or solely in interior
- G    **1**: trade with manufacturing in both regions

Figure C1. Log Nonzero Lights in 2010

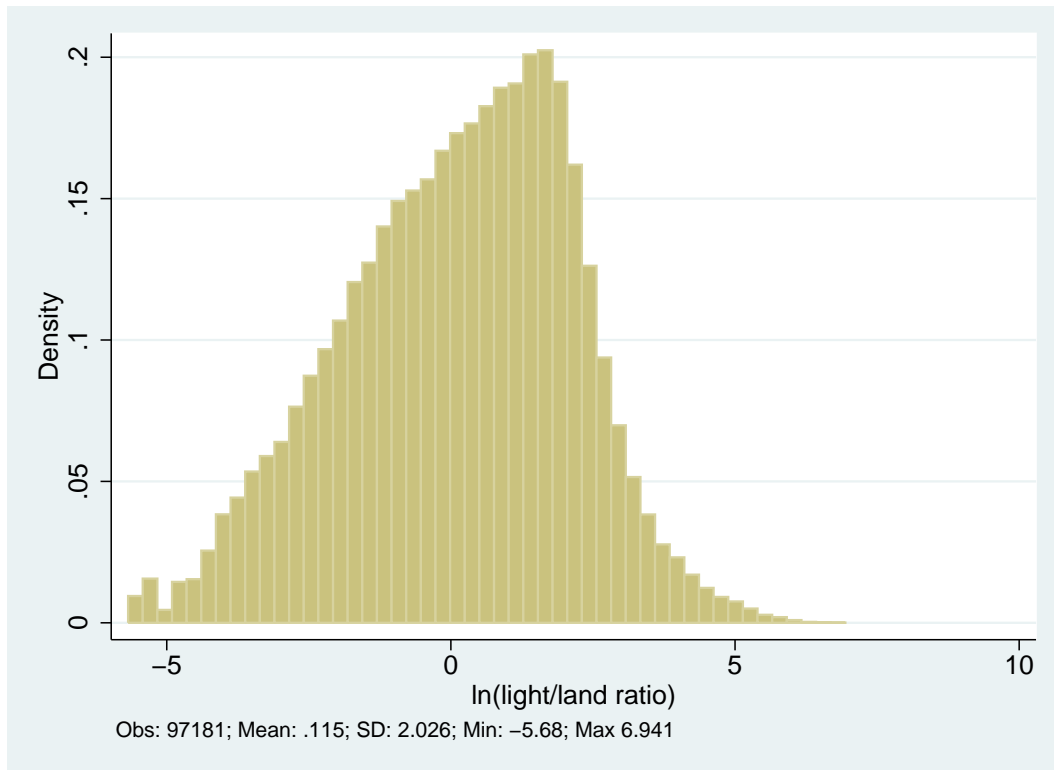


Table C1. Intensive and Extensive Margin R-squared

	No FE	FE
Both margins	0.467	0.577
Extensive margin, LPM	0.390	0.480
Intensive margin, OLS	0.258	0.360
Country FE, extensive margin		0.272
Country FE, intensive margin		0.229
Base, both margins	0.020	0.355
Agriculture, both margins	0.450	0.566
Trade, both margins	0.066	0.370

Notes: Each number represents an  $R^2$  value from a separate regression on all geographic variables or the subset shown. In extensive margin rows, the dependent variable is a dummy for lights being positive, and the sample is the full global sample. In the intensive margin rows, the dependent variable is  $\ln(\text{lights})$ , and the sample is grid squares with positive light values. FE stands for country fixed effects.



Table C2. Intensive and Extensive Margin Coefficients

	no country FEs		w/country FEs	
	Extensive	Intensive	Extensive	Intensive
ruggedness (000s)	-0.000441 (0.000269)	-0.0282*** (0.00189)	0.000933*** (0.000303)	-0.0220*** (0.00211)
malaria index	-0.00644*** (0.000437)	-0.0453*** (0.00428)	-0.00497*** (0.000443)	-0.0368*** (0.00288)
tropical moist forest	-0.00415 (0.00980)	-0.190*** (0.0545)	0.0389*** (0.0109)	-0.404*** (0.0570)
tropical dry forest	0.0606*** (0.0113)	-0.120* (0.0615)	0.179*** (0.0127)	-0.0685 (0.0611)
temperate broadleaf	0.157*** (0.00926)	0.603*** (0.0515)	0.178*** (0.00988)	0.753*** (0.0542)
temperate conifer	0.0466*** (0.0118)	0.135** (0.0604)	0.100*** (0.0120)	0.386*** (0.0627)
boreal forest	-0.180*** (0.0122)	-0.423*** (0.0676)	-0.0813*** (0.0118)	-0.313*** (0.0675)
tropical grassland	0.0184** (0.00755)	-0.220*** (0.0568)	-0.0878*** (0.00877)	-0.870*** (0.0568)
temperate grassland	0.184*** (0.00892)	0.147*** (0.0500)	0.152*** (0.00991)	0.0127 (0.0525)
montane grassland	0.0806*** (0.0122)	0.391*** (0.0645)	0.0776*** (0.0133)	0.0231 (0.0671)
tundra	-0.230*** (0.0134)	-0.594*** (0.103)	-0.176*** (0.0131)	-0.334*** (0.0960)
Mediterranean forest	0.218*** (0.0130)	0.443*** (0.0697)	0.0760*** (0.0123)	0.256*** (0.0643)
mangroves	-0.0495** (0.0198)	-0.310*** (0.102)	0.0321 (0.0224)	-0.365*** (0.111)
temperature (deg. C)	0.0226*** (0.000602)	0.0196*** (0.00445)	0.0262*** (0.000515)	0.0882*** (0.00345)
precipitation (mm/month)	-0.00160*** (0.0000647)	-0.00568*** (0.000378)	-0.00118*** (0.0000604)	-0.00343*** (0.000349)
growing days	0.00111*** (0.0000398)	0.00520*** (0.000227)	0.00134*** (0.0000385)	0.00445*** (0.000215)
land suitability	0.353*** (0.00776)	0.802*** (0.0411)	0.418*** (0.00784)	0.740*** (0.0396)
abs(latitude)	0.00880*** (0.000498)	0.00343 (0.00324)	0.0176*** (0.000375)	0.0520*** (0.00211)
elevation (km)	0.0455*** (0.00410)	-0.270*** (0.0270)	0.0907*** (0.00385)	0.0391 (0.0250)
coast	-0.0000640 (0.00440)	0.545*** (0.0308)	-0.00200 (0.00517)	0.561*** (0.0337)
distance to coast (000s km)	-0.0969*** (0.00516)	-0.288*** (0.0328)	-0.102*** (0.00450)	-0.408*** (0.0289)
harbor < 25km	0.137*** (0.00740)	0.524*** (0.0394)	0.152*** (0.00824)	0.452*** (0.0441)
river < 25km	0.113*** (0.00840)	0.320*** (0.0467)	0.129*** (0.00884)	0.329*** (0.0528)
lake < 25km	0.0626*** (0.0121)	0.644*** (0.0776)	0.0756*** (0.0125)	0.682*** (0.0814)
<i>N</i>	242184	97181	242184	97181

Notes: Each column reports OLS coefficient estimates from a separate regression. In extensive margin columns, the dependent variable is a dummy for lights being positive, and the sample is the full global sample. In the intensive margin columns, the dependent variable is  $\ln(\text{lights})$ , and the sample is grid squares with positive light values. FEs stands for country fixed effects. Standard errors, clustered by 3x3 sets of grid squares, are in parentheses. \*  $p < 0.1$ , \*\*  $p < 0.05$ , \*\*\*  $p < 0.01$ .

Table C3. Full Nonlinear Differential Coefficient Results

	Education	Urbanization	GDP per capita
agriculture differential ( $\alpha$ )	0.332*** (0.0238)	0.194*** (0.0209)	0.254*** (0.0239)
trade differential ( $\gamma$ )	-0.650*** (0.0178)	-0.393*** (0.0218)	-0.526*** (0.0321)
ruggedness (000s)	0.00507** (0.00217)	0.000734 (0.00209)	0.0112*** (0.00253)
malaria index	-0.0809*** (0.00296)	-0.0749*** (0.00277)	-0.0553*** (0.00276)
tropical moist forest	-1.697*** (0.0762)	-1.453*** (0.0743)	-1.110*** (0.0761)
tropical dry forest	0.0264 (0.0893)	0.260*** (0.0887)	0.385*** (0.0910)
temperate broadleaf	1.080*** (0.0668)	1.400*** (0.0679)	0.747*** (0.0765)
temperate conifer	0.626*** (0.0745)	0.804*** (0.0772)	0.278*** (0.0858)
boreal forest	-1.203*** (0.0794)	-1.175*** (0.0788)	-2.233*** (0.0983)
tropical grassland	-1.566*** (0.0537)	-1.569*** (0.0526)	-1.394*** (0.0540)
temperate grassland	0.146** (0.0582)	0.321*** (0.0603)	-0.330*** (0.0693)
montane grassland	0.570*** (0.0768)	0.355*** (0.0811)	0.183** (0.0861)
tundra	-1.775*** (0.0900)	-1.877*** (0.0919)	-3.193*** (0.115)
Mediterranean forest	0.261*** (0.0813)	0.522*** (0.0878)	-0.0133 (0.0879)
mangroves	-1.936*** (0.156)	-1.438*** (0.143)	-1.289*** (0.153)
temperature (deg. C)	-0.0547*** (0.00153)	-0.0594*** (0.00155)	-0.0807*** (0.00175)
precipitation (mm/month)	-0.00856*** (0.000392)	-0.00928*** (0.000400)	-0.00913*** (0.000426)
growing days	0.00658*** (0.000260)	0.00605*** (0.000265)	0.00604*** (0.000285)
land suitability	2.550*** (0.0551)	2.594*** (0.0570)	2.629*** (0.0621)
abs(latitude)	-0.0310*** (0.00121)	-0.0360*** (0.00121)	-0.0167*** (0.00145)
elevation (km)	-0.599*** (0.0195)	-0.605*** (0.0201)	-0.684*** (0.0228)
coastal	-0.0753 (0.0700)	-0.143*** (0.0543)	-0.00128 (0.0664)
distance to coast (000s km)	-2.003*** (0.0373)	-1.611*** (0.0383)	-1.801*** (0.0396)
harbor < 25km	3.011*** (0.121)	2.665*** (0.103)	2.435*** (0.105)
river < 25km	1.251*** (0.110)	1.102*** (0.0940)	1.036*** (0.112)
lake < 25km	0.170 (0.148)	0.523*** (0.139)	0.132 (0.163)
<i>N</i>	227032	241995	180912

Notes: Each column reports non-linear least squares estimates of equation (3), for education, urbanization and GDPpc split variables. Standard errors, clustered by 3x3 sets of grid squares, are in parentheses. \* p<0.1, \*\* p<0.05, \*\*\* p<0.01.