



THE LONDON SCHOOL
OF ECONOMICS AND
POLITICAL SCIENCE ■

130 EST 1895
years

Welcome to the Department of Gender Studies MSc Handbook

2025/26



lse.ac.uk/gender



Contents

Department of Gender Studies

- 3** Welcome to the Department of Gender Studies
- 5** Welcome Activities
- 6** About the Department of Gender Studies
- 14** Key Department Contacts and Sources of Support for MSc Students
- 17** MSc Programmes: Introductions and Welcomes!
- 29** Course Selection: Information and Guidance
- 38** Key Information
- 45** Student Voice
- 48** Quality Assurance
- 49** Study and Career Support Services
- 57** Equity, Diversity and Inclusion (EDI)
- 63** Exams and Assessments
- 67** Assessment Misconduct
- 68** Results and Classification
- 70** Fees and Finance
- 72** Codes and Charters
- 74** Systems and Online Resources
- 80** LSE Campus

This information can be made available in alternative formats, on request.
Please contact gender@lse.ac.uk



Connect with the LSE community
studenthub.lse.ac.uk/welcome



Welcome to the Department of Gender Studies

Welcome from Sumi Madhok, Head of Department

It is a pleasure to welcome you to the Department of Gender Studies. Our thriving community of scholars, administrators and doctoral students is dedicated to delivering stimulating, challenging, and research-led education. LSE Gender was established in 1993 to serve as an interdisciplinary focus for gender research in the School, as well as nationally and internationally. Over the years we have grown to become the largest postgraduate teaching centre in Gender Studies in Europe, and we take great pride in our role in shaping an international Gender Studies agenda.

The field you are entering this year is an interdisciplinary and transnational one, and during your time with us you'll become experts in that field. You'll be introduced to a range of different theoretical approaches to gender, and you'll also develop specialist knowledge in line with your degree programme and your own emerging research interests. As an active participant in the life of LSE Gender, you are expected to make use of the multitude of resources available to you. As well as formal teaching, the broad research and cultural life of the Department provides further opportunities to learn and exchange ideas. Research and social events offer an opportunity for more informal engagement with the Department as well.

LSE Gender's intellectual life starts from the proposition that social, psychic and cultural processes are gendered, and that engaging with 'gender' is thus a crucial part of the social sciences and humanities. But what does 'gender' mean? How might we understand it, especially if we are interested in transforming the inequalities that continue to result from its naturalisation?

At LSE Gender we take an interdisciplinary, transnational and intersectional approach to the study of gender. Our faculty are global thinkers who are engaged in exploring the gendered nature of global power structures and in thinking expansively about how gender operates socially, economically, historically, culturally or inter-personally across transnational scales. We are concerned about how 'gender' can (or can't) be translated across different contexts and times, and the ways in which we inhabit gendered relationships as well as subject them to analysis. And we are attentive to the ways gendered, raced, class and sexual axes of power and privilege intersect.

Continued...

LSE Gender is an intellectual space of transformation, and we take this role very seriously. We believe that engaging gender in knowledge production raises particular questions of who we are in the world and what values we take with us into our work and into our relationships with others. It is a field that foregrounds questions of social and global justice.

Studying 'gender' is never only descriptive and description is never an unmediated or apolitical account of the social world. This means that theory is of key importance for understanding the world, and it is integral to the development and the outcomes of transformative projects. Much of what has happened over the past few years brings into stark relief the urgent need for transformation.

As a Department that invariably recruits the most talented and committed students from across the globe, you will find that our faculty and administrators have the very highest expectations of you as well as of themselves. At the same time, it is important to acknowledge that teaching and learning in the current historical moment will be difficult at times. It will require, from everyone, a spirit of patience, solidarity, and care as we return to a less distant and less constrained way of teaching, but at the same time stand ready to respond and adapt to any future health-related challenges or restrictions. If and when such adaptations are required, I want to reassure you all that we will always be firmly committed to making sure that LSE Gender provides you with the support and encouragement you need to make this a truly rewarding experience.



Sumi Madhok

Professor of Political Theory and Gender Studies and
Head of the Department of Gender Studies, LSE



Welcome Activities

Welcome Week

Welcome Week takes place from 22-26 September, and **the full schedule will be released on this webpage in late August**. Welcome events form an essential part of your induction onto your programme. Please plan to be in London ready for Welcome activities from Monday 22 September.

Welcome events will incorporate:

- Community building activities
- Department and Programme Induction
- Meeting your Academic Mentor
- Support with browsing and selecting courses
- A 'Key Concepts in Gender' Workshop
- LSE-wide Welcome Events

If you are arriving at LSE after Welcome has started, please contact Catherine Perry (**gender@lse.ac.uk**) to make arrangements to help you catch up and settle in.

Please also **[check here for information about LSE Welcome activities](#)**.

About the Department of Gender Studies

The Gender Institute, now the Department of Gender Studies, was established in 1993 as a multidisciplinary research centre and serves as a focus for gender research across the School. We run a large master's programme, with eight separate degrees, and a PhD programme. LSE Gender's graduate students come from all corners of the globe, as do a number of academic visitors resident at any one time. We aim to be a lively and friendly place with an international student community in the heart of London, with many links to other departments and institutes within the School.

In addition to its core teaching programme, LSE Gender provides a vibrant research culture with resident research fellows, visiting scholars, public lectures, seminars, workshops and conferences.

The research work of LSE Gender is critical, transnational, and interdisciplinary. Our research is variously positioned in relation to different fields of study within the social sciences and humanities, but in each case, the focus on gender means testing conventional disciplinary boundaries and developing alternative methodologies. All the work addresses, in some way, the tenacity of gender power relations and gendered inequalities in a period of global transformation.

Common Room and Study Spaces for Gender Studies Students

The Gender Studies Department is based on the 11th Floor of Pankhurst and 10th Floor of Fawcett House. Here's an overview of the spaces available for use by our students:

- **Common Room (FAW 10th Floor):** Our MSc common room is a space for you to meet or work together on group work or peer study. The common room is available from 8am-8pm.
- **Student kitchen (FAW 10th Floor):** Find our new student kitchen on the right as you enter the lifts. Equipped with crockery, microwave, boiling water tap and fridge. Please make sure to keep this space clean and to wash up and return any used crockery to the cupboards immediately after use.



- Silent Study Workstations (FAW 10th Floor): We welcome Gender Studies students to use these workstations for silent study only. Please be reminded that this area is a workspace where our faculty have offices and therefore it is important to keep this area quiet. We kindly request that students move inside the common room or elsewhere for conversation.
- Department Open Space (PAN 11th Floor): We welcome Gender Studies students to sit at the big table in the Department for silent study between the hours of 9:30-17:30 Monday-Friday. Please note that this space will sometimes be unavailable during these hours due to Department meetings (usually Wednesdays from 12:00-14:00).

Department of Gender Studies staff

You can find an up-to date list of faculty and professional services staff in the Department of Gender Studies, along with their contact details and profiles [here](#).

Department of Gender Studies Emerita and Visiting Faculty

The department welcomes a number of Academic Visitors and affiliated faculty each year. Appointments enable us to host academics from other institutions to conduct research or be involved in other departmental activities. To find out more about our Academic Visitors, [please see our People Page](#).

Communicating with the Department

It's essential to check your LSE email inbox regularly for important information relating to your degree. Personal (non-LSE) email addresses are not used to contact students.

There are various other communication platforms which the Department uses ([Bluesky](#), [Instagram](#), [LinkedIn](#), etc) but all key Department information will be shared by email so if you don't use social media then you will not miss out on key information.

The Department sends a weekly newsletter, usually on a Friday. This will include important updates and reminders from the Department, details about our upcoming events and social activities, as well as information about external opportunities such as events and job adverts that may be of interest to some Gender students. While we try to ensure all things that we send to you are legitimate, it is not always possible to check so please note that LSE neither endorses nor accepts any liability for the information we provide about any opportunities. Students are advised to conduct their own checks on the accuracy of any information and raise any concerns with the third party.

If you change your private contact details at any time, be sure to inform the School by updating this in LSE for You.

Department of Gender Studies events and activities for students are also posted on the LSE Student Hub calendar, so we recommend [downloading the Student Hub app](#).



A Statement of Care

Courses in the Department of Gender Studies endeavour to prioritise issues of diversity and inequality, and to challenge social and intellectual exclusions based on race, gender, sexuality, age or disability. Students and faculty are expected to be respectful of one another and attentive to issues of diversity and inequality, and these concerns also form a central part of the knowledge production you will encounter.

As a department, we recognise that students and faculty may face multiple and complex barriers during their time at LSE, and we are committed to making our courses and our teaching accessible in a variety of ways.

On a departmental and pedagogical level, we are invested in creating teaching and learning environments premised in an ethics of care. Engaging in this work is not always easy, nor straightforward. Our efforts to create more accessible spaces of learning must be understood as an ongoing process. This very statement of care, for example, has been collectively written and re-written multiple times over the years, and we are leaving it open for future revisions. We invite our students to reflect on, engage with, and work with us to collectively improve this statement where needed. This collaborative effort between faculty and students is integral to our pedagogy.

Central to our efforts to make our classrooms accessible and located in an ethics of care is our approach to teaching material that can be distressing or upsetting. Due to the nature of this course, and the field of Gender Studies more broadly, we will be engaging with materials and topics that are, of necessity, difficult. Inherent to studying gender is analysing how intersecting inequalities and modes of power place people into precarious, hierarchical, violent, and harmful relations with individuals and institutions. Because we will be working together on issues that require sensitivity, we will take great care in the ways in which we present these materials in the classroom. While there may be occasions where you will be asked to engage with difficult images or texts, or to participate in uncomfortable discussions with your peers and teachers, we will work to support you through these challenges as part of enabling your learning.

In line with our commitment to prioritising the wellbeing of our students and faculty we offer the following support for your learning in this context:

- **Having community agreements established by students and faculty in seminars at the start of term.** These typically include a commitment to challenging discrimination in its various forms (including micro-aggressions), and to affirming the importance of a trans*-inclusive, anti-homophobic, anti-sexist, anti-racist space. They might also include localised commitments (e.g. to preparing for class and confidentiality). These can be returned to or added to at any time, and students are encouraged to propose agreements to their seminar leaders which best support their inclusion within the space, individually and/or collectively.



- **Respecting our differences within learning spaces (for students and faculty).**

We ask that students and faculty listen carefully and respectfully to one another and endeavour to communicate across differences where possible. We recognise that learning in the field of Gender Studies is likely to raise passionate feelings for all participants and we need to be sure to value these, particularly in the moments we disagree. In instances where students do not feel supported or respected by their peers, they should speak with their seminar leader, course convenor, or academic mentor.

- **Engaging in decolonial practices of care, responsibility and repair.**

The pedagogical practices at the department are led by a feminist decolonial ethics. These practices involve taking up responsibility for building a teaching and learning community based on support and care for all. This is a collective responsibility of both staff and students. Importantly, this means that when conflicts, difficulties and misunderstandings occur, we take responsibility to address and resolve these through an ethic of responsibility, care and repair. We are mindful that there will be times when misunderstandings might also occur in interpersonal relations among students. We encourage our students to use the tools of responsibility, care and repair to work with and through difference.

- **Exercising care in introducing visual and textual material for students in lecture and seminar contexts.**

Faculty strive to present difficult arenas of debate and representation with sensitivity, and will thus introduce any visual and textual material that has challenging content with particular care and attention to context. We try as far as possible not to require students to engage visual and textual material that has sexual, gendered, or racial violence; but on the occasions that this is part of the learning within a course, we will make clear how and why we feel that direct engagement with this material is important. We are aware that triggers* for trauma are not always related to witnessing or engaging with representations of violence, and that trauma can sometimes re-emerge in surprising and unexpected ways. We will do our best to offer in-class and ongoing support in person when issues arise, and we will respect any student's decision to leave the classroom at any point or to disengage with a text that is triggering for them.

- **Discussing your needs with us in advance. Please familiarise yourself with the course outline of each class in advance, as this will give you a sense of the weekly content.**

If you think that any specific content might be triggering for you, we would encourage you to contact your seminar leader and convener of the course as soon as possible to work out together how to take your needs into account. We also support student self-care and can provide a list of relevant support services within LSE.



- **We offer one-on-one or group office hours and consultation for ongoing engagement with any aspect of student learning.** Should you need to leave the classroom space (for any reason) we will contact you after the class to check in and will invite you to come and see us either in-person or online. We are also happy to talk about our choice of learning materials with you at any point.

On an institutional level we work closely with the support services at LSE, including the Disability and Mental Health Service, the Counselling Service, LSE LIFE, and the Language Centre. Our faculty are also engaged in school committees such as the Equity, Diversity and Inclusion Network, the LGBT Steering Group, EmBrace, the Gender Equity Forum, and the Disability and Wellbeing Network, which all strive to improve the school's provision of services for its marginalised students, faculty, and staff. We encourage our students to make the most of the support services available to them, and to participate in the forums and avenues for making change at LSE as well - be that through the Staff Student Liaison Committee, the Student Union, or collective action.

*Importantly, we acknowledge that some students may find any number of materials *triggering*. We locate the term "trigger" and the practice of issuing "trigger warnings" in the juncture of feminist activism and disability justice, as an attempt to co-create an environment of accessible, consensual engagement. The discourse on trigger warnings arose from literature on post-traumatic reactions and from popular outlets by survivors of sexual assault in institutional settings of education or employment. While we are not interested in allowing students to avoid materials that cause *discomfort* or *unhappiness*, we are strongly against retraumatizing those who are navigating post-traumatic stress disorder (PTSD) in the aftermath of sexual violence. Importantly, we understand that traumatic fear cannot be overridden or overcome with methods used in circumstances unaffected by disability (like discomfort). Therefore, we specifically highlight the final three measures listed above.

Gender Studies asks you to engage with difficult questions of social and intersubjective significance and we aim to teach you how to read and think about those questions as part of navigating the field. Please do make sure that you familiarise yourself with the course outline of the courses that you are taking in advance of each class which gives a sense of the course content. However, if you feel unable to continue to participate in a particular class or lecture, you may leave at any point and will not be challenged. We would encourage you to follow up with your seminar tutor or academic mentor, however, to address any concerns. We also support student self-care and can provide a list of relevant support services within LSE.



Student representatives and active participation in the department

LSE Gender students elect Student Academic Representatives, who play an important role in the Department.

Each Programme elects a representative who will work with Catherine and programme directors on the termly Student-Staff Liaison Committee (SSLC) meetings, which is one of the formal mechanisms for communication in the Department. We encourage all students to attend these meetings, not just the Reps, to have a chance to share your views and to discuss issues that affect the student community as a whole. The position of student representative does have an associated workload, but it is not onerous and won't impact on your studies.

We have to elect the student representatives in the first few weeks of term, but have found that this timing often means that it is people with prior experience of doing this role who tend to put themselves forward. In order for the Department's student representatives to more fully represent our student body, we actively encourage people without prior experience and those from diverse backgrounds to apply. If you are interested in this role and would like to discuss it further, please talk to Catherine and/or your programme director.

One of the programme representatives is elected by the other representatives to attend the Department's termly Teaching Committee and dates of these meetings will be provided at the beginning of the term. Another one of the MSc programme representatives is elected to be the Department's representative on LSE's Consultative Forum. More information on these two subsidiary roles will be provided on election to programme representatives.

LSE Gender Enhance Programme

Enhance is our bespoke programme of additional activities offered exclusively for LSE Gender students and alumni. These sessions are offered in addition to your academic teaching, and aim to enhance your education, develop key skills, and build lasting connections within the LSE Gender community. Enhance sessions include targeted professional development, support with academic skills, and cohort socials.

We welcome students to co-create the programme of Enhance sessions, by contacting Catherine (gender@lse.ac.uk) to discuss any sessions you would like to suggest, or lead on. In the 2024/25 academic year, students organised film screenings, themed alumni panels, craft nights, and an art collective and exhibition. The programme of **Enhance events will be posted on this webpage**, and each session is also posted to the **Student Hub calendar**.



Engenderings

The Department is also home to the Engenderings blog (<https://blogs.lse.ac.uk/gender/>) run by a collective of our own PhD students. Engenderings is a blog about the role of gender in cultural, social and political life. It brings together a broad range of perspectives to engage with ideas about gender as it operates in local and global culture and society. At the core of Engenderings is the idea that gender is everywhere, shaping not only the way we move through the world – organising human bodies, sexualities, identities – but also the way we relate to the world and to each other, in thought and in action, from political representation to cultural production. Engenderings is about the inflections of gender in everyday life. It is interdisciplinary in approach and subject matter, with material originating from a range of fields including social and political science, cultural and media studies, literary criticism, arts, philosophy, environmental studies and technology. Engenderings is committed to an open and critical engagement that is responsive to different points of view and is invested in exploring gender as an analytical category. The collective would very much welcome new student input - their email is gender.studies.blog@lse.ac.uk

Part-time students

LSE Gender admits a small number of part-time students each year. Part-time students must meet the same requirements, but complete their programme over two years. The usual arrangement is to take half the programme over one year and half in the following year. You will take your core courses, including GI424 Gender Theories, in your first year, as these courses provide training in key concepts and approaches within the gender field and will inform your overall degree. The dissertation will be submitted in the second year. Tuition takes place during the day, at the same time as full-time students. We do not usually hold lectures or seminars in the evening beyond 6pm, or at weekends, but we do try to accommodate part-time students' requirements to fit in with working patterns. It is the responsibility of part-time students to ensure that their other commitments allow them to attend their seminars, complete written assignments and attend examinations. If you want to change from full-time to part-time study (or vice versa), please email Catherine (gender@lse.ac.uk) for advice.

Attendance and Absences

You are required to be at LSE during term time for all three terms, to attend lectures and seminars, as well as meetings with faculty (for example academic mentor appointments or dissertation supervision).

Attendance at seminars is compulsory. If you are unable to attend a seminar for any reason, please inform your seminar teacher by email in advance, so they can record your absence as 'absent with reason'.



Should you face exceptional circumstances that may require you to request a leave of absence during the term time, **[please read LSE's policy for approved absences here](#)**, and email **gender@lse.ac.uk** for advice. You should also inform your Academic Mentor so that we can help to ensure you have all the support you need to stay on track with your studies.

Reading Weeks

LSE Gender has Reading Weeks in Autumn Term and Winter Term, which are always in Week Six. There is no Reading Week in the Spring Term.

Please note that you will be working on assessments during Reading Week so although you do not need to be at LSE during Reading Weeks, you must ensure you have access to a reliable internet connection.

Please note that not all departments at LSE have Reading Weeks, so if you're taking courses from outside the Department of Gender Studies, you may still have teaching to attend.



Key Department Contacts and Sources of Support for MSc Students

The following lists the support available in the Department, and see a later section in this handbook for details of LSE-wide services. If you need any advice or information but aren't sure who to ask, please contact Catherine (gender@lse.ac.uk) for advice. The Professional Services team is available in person or online Monday to Friday during working hours in both term time and vacation time (apart from during public holidays and School closures).

Office hour appointments

All academic staff hold weekly office hours during term-time, and will not normally be available outside of these. During LSE vacation periods, academic staff will not be available to meet with students, as they must focus on their research commitments. It is important that you organise your workload to allow time to see faculty members during term-time. Appointments are booked via the **Student Hub**. These guidelines will help to make sure that office hours are as productive as possible:

- Office hours take place during the term time only and do not take place during Reading Weeks (Week 6 of the Autumn and Winter terms).
- Office hours are primarily for current teaching queries and pastoral support for mentees. However, you are free to make appointments with any member of faculty (for example, if there is a particular area of faculty expertise you are interested in). Please note that some office hours may be restricted to students on particular courses, at busy points during the term.
- Please ensure to cancel your appointment if you can't attend. Office hours are a finite resource and not showing up prevents another student from utilizing that time with faculty.
- Taking time to prepare for your appointment in advance, will help you to get more out of it. Before attending, students are encouraged to prepare notes or questions, undertake exercises, review slides, and do some relevant readings.
- In instances where one faculty member is booked up, we suggest checking office hour availability for other members of faculty who may also be able to help.

- Recording office hour appointments without explicit consent from the relevant faculty member is a breach of their privacy and it is not in line with the values of the department. If you need advice about how to make the most of your office hour appointment, please ask. Physical note taking is a very useful skill that will help you in the future.

Academic Mentors

You will be assigned an Academic Mentor and attend a group meeting with them during Welcome Week. Following on from this initial group meeting, you should book individual office hour appointments via [Student Hub](#), to meet with your Academic Mentor at least once each term.

Your Academic Mentor is a key point of contact in the department. Their role is to support your academic progress and overall wellbeing during your time at LSE. They can provide guidance on the wide range of academic and pastoral topics that might come up during your time at LSE. You should keep your Academic Mentor informed of any disruptions to your progress, such as illness, financial difficulties, or other crises. Your Academic Mentor will be able to signpost you to a number of key services around the school, so don't hesitate to get in touch with them.

To find out more about the responsibilities of a Mentor and Mentee, as well as guidance on how to prepare for meetings with your Academic Mentor, please [see the Academic Mentoring Hub](#).





Professional Services Staff

The Professional Services Staff, also known as the Admin team includes Catherine Perry (Taught Programmes and Student Affairs Manager), Rob Kirkland (Operations and Assessments Manager) and Nele Leitolf (Communications and Events Officer). The admin team can answer most questions of a non-academic nature or tell you who can help you with your query. Catherine manages the student experience and Rob manages all assessment matters.

Please contact gender@lse.ac.uk if you need any advice or information, or if you would like to book a meeting with any member of the Admin team.

Programme Director

Each MSc has a programme director who has overall responsibility for the running of the degree. The programme director can advise you on any matter to do with your degree.

Course Convenor

Each course in LSE Gender is convened by one or two faculty members who are responsible for the course content, administration and teaching. If you have any queries about the course, you can make office hour appointments to see the course convenor.

Dissertation Supervisors

Your dissertation supervisor will be allocated after submitting your Summary Proposal in the Winter Term. Supervisors are carefully assigned based on a combination of the topic outlined in your summary proposal, areas of faculty expertise, and to ensure an equitable workload for faculty. Please note that these allocations are final and swaps are not possible. All supervisors are knowledgeable and experienced researchers who can supervise a range of topics.

Individual supervision is offered in conjunction with the programme of GI499 sessions that provide comprehensive training to produce an Independent Research Project.

Students must ensure to have arranged all supervision before the end of the Spring Term, when faculty go on research leave and supervision ends. Supervision aims to enable students to autonomously move forward with their project by the end of the Spring term. At this point, the Dissertation writing period is a wonderful opportunity to spread your wings and make the most of this time to focus independently on your own research. Do be reassured however that you'll continue to have access to a range of support both from the Department and from dedicated LSE services, throughout the Summer writing period.

This includes LSE Gender Clinics, [LSE LIFE](#), the Department's [Academic Support Librarian](#), and the [Digital Skills Lab](#). Details will be available in the GI499 handbook and will be highlighted in the LSE Gender newsletter.

MSc Programmes: Introductions and Welcomes!

MSc Gender and MSc Gender (Research)

Welcome from Dr Hakan Sandal-Wilson, Programme Director



Welcome to the Department of Gender Studies and to the Programme Cluster that contains [MSc Gender](#) and [MSc Gender \(Research\)](#). We are thrilled that you are joining us and becoming part of our vibrant community of researchers and scholars. You are about to embark on an exciting intellectual journey, one that we hope will inspire and equip you for many years to come.

The Department is invested in teaching and researching gender relations from a transnational, intersectional, and interdisciplinary perspective. It is this commitment that informs our continual efforts to decolonise the curriculum and gender research, to introduce all our students to innovative scholarship across a range of contexts, and to provide you with the intellectual tools that you will need to apply critical thinking to your own research, learning, thinking, and professional practice.

In choosing your degree, you will have noted that the Gender and Gender (Research) degrees combine academic rigour with flexibility. They have been carefully designed to enable you to pursue a programme of intellectual study that reflects your interests, while ensuring you receive the solid foundational training required to become gender experts. To this end, you will be taking two core courses: 'Gender Theories' and 'Gender, Knowledge and Research Practice'. These courses aim to provide you with an in-depth and critical knowledge of different theoretical frameworks for thinking about complex inequalities and gendered power relations in our contemporary world. These courses will also equip you with the tools to produce feminist knowledge in an interdisciplinary manner.

We believe that learning does not merely take place inside the classroom. Learning is a process that is most rewarding when, in combination with classes and your own study time, it also involves a continuous dialogue with peers, teachers, and other scholars. It is for this reason that the Department has an open space which you are all most welcome to use to work with others. And it is with the aim of bolstering your learning that we also have a lively events programme. I would strongly encourage you to participate in these events, most of which are followed by informal receptions.

Together these provide relaxed and friendly spaces for continuing conversations and a chance to build stimulating and collaborative intellectual relationships. Do attend as many Gender Events and LSE Public Lectures as you possibly can. The events list at the Department and the School is nothing short of amazing, and you never know – there just may be one that will inspire you, provide you with critical insights, and shape your thinking!

As we come together to teach, learn, and think, the shadow of the pandemic as much as ongoing global political events and the calamitous impact of climate emergency, continue to loom large everywhere, including on this MSc programme. This context has brought home to us the necessity and the urgency of pedagogical practices that enable critical thinking and solidarities. Teaching and learning now, perhaps more than ever, requires fostering teamwork and a community ethos, and relies on our collective patience and profound care towards each other.

As you prepare to embark on an exciting intellectual journey, I would like to warmly welcome you to our community. I look forward to meeting you in September and to getting to know you throughout the year.



MSc Gender (Sexuality)

Welcome from Dr Rohit K. Dasgupta, Programme Director



As the Programme Director for **MSc Gender (Sexuality)**, I want to welcome you warmly to the Department of Gender Studies. You are about to embark on a year that promises to be intellectually stimulating and challenging, within a department that values and encourages collaboration, dialogue and academic excellence. The 2025-26 academic year is the eighth year of our Sexuality Studies programme, and I want to take this opportunity to encourage you to make the most of your time with the programme, the Department, the LSE community, and London.

Sexuality Studies and Gender Studies are specifically invested in fostering the tools we all need, as students and academics alike, to support one another. In joining the Gender (Sexuality) programme, you are not only joining a scholarly community dedicated to fostering the next generation of researchers, scholars and activists; you will also be embarking on a year (or two, if you are studying part time) during which you will be introduced to new ways of thinking that we hope will help you forge a more just and liveable world.

The Gender (Sexuality) programme is taught by experts in the field of Sexuality Studies who take different interdisciplinary, intersectional and transnational approaches to our research and teaching. Our work is grounded in and informed by feminist, queer, trans*, critical race, post- and decolonial traditions of scholarship and activism, as well as ongoing discussions across a range of academic fields in the Social Sciences and Humanities, including History, Sociology, Media Studies and Anthropology.

As students on the Sexuality programme, you have a lot of flexibility in your choice of courses. Your core courses – ‘Gender Theories: An Interdisciplinary Approach’ (GI424) and ‘Transnational Sexual Politics’ (GI422) – will provide you with in-depth and critical knowledge of a range of different theoretical frameworks for thinking about complex intersectional inequalities, as well as introducing you to a range of case studies from across the world which will illuminate sexual and gendered power relations. In these courses, you will explore, alongside your peers and tutors, the significance of theories, politics and representations of sexuality. The year culminates in a student-led conference that showcases students’ cutting-edge research. My colleagues and I look forward to working with you in the lead-up to this capstone project, which will allow you to focus on a sexuality-related topic of particular interest to you.



At LSE you have access to an array of academic and non-academic resources, including academic development resources available via [LSE LIFE](#) and the [LSE library](#), the [LSE Language Centre](#), wellbeing support through the [Disability and Mental Health Service](#), and professional development opportunities through [LSE Careers](#). I hope you find these resources useful as you embark on this exciting experience, filled with new opportunities for academic and personal growth. Most of all, I hope you make the most of this chance to meet new people within and beyond your programme, as the friends you make this year may stay with you for life.

I look forward to meeting you and getting to know you all throughout the year. I hope your time in the Department of Gender Studies is filled with new experiences, insights and enjoyment.



MSc Gender (Rights and Human Rights)

Welcome from Dr SM Rodriguez, Programme Director



Hello and welcome to the Department of Gender Studies. As Programme Director of the **MSc Gender (Rights and Human Rights)**, I'm writing to send you the warmest congratulations on joining this unique programme! I also write to wish you well as you embark on what is certainly a tremendous academic, social, and personal journey. Make the most of your time in the programme, Department, the wider LSE community, and the vibrant city of London.

Here, you will have access to a valuable array of academic and non-academic resources including Departmental and LSE-wide events, academic development resources available via **LSE LIFE** and the **LSE library**, career development and support through **LSE Careers**; and wellbeing support from the **Disability and Mental Health Service**. These and many other resources available to you are designed not only to support you in achieving your academic goals but also to expand your professional horizons while enjoying your time at the LSE. While you will find these resources useful as you make progress in the programme, it is equally important to remember the value of creating networks and friendships with peers who share similar interests, as these will be a part of your lives and professional communities well beyond the length of the programme. We are here to facilitate these connections so that you can access and nurture them as you move forwards in your journey at the LSE.

In the Department of Gender Studies, you will have the opportunity to learn alongside dedicated students from around the world, united in their intellectual desire to understand and develop gender theory. In the MSc Gender (Rights and Human Rights), you will be exposed to challenging intellectual queries of the histories, currents, and trajectories of social change. Together, you will develop your political and theoretical sensibilities as well as methods of studying rights, power, and collectivisation. As part of this programme, we take pride in our attention to critiques of coloniality and its infusions of power in cultures, states, and avenues of change-making; we look to expand perspectives on justice from below, while considering the roles of states, organisations, and international institutions.

Through a combination of rigorous compulsory and optional courses, our aim is for you to expand your knowledge of and engagement in social justice while sharpening your focus on a particular site of inquiry. The Department of Gender Studies is a hub of intellectual vitality, and we strive to collaborate across programmes to provide an environment that is receptive to student needs. As a Department, we are committed to providing opportunities for you to grow and to expand your academic and intellectual pursuits, and you can count on approachable staff to help you along the way.

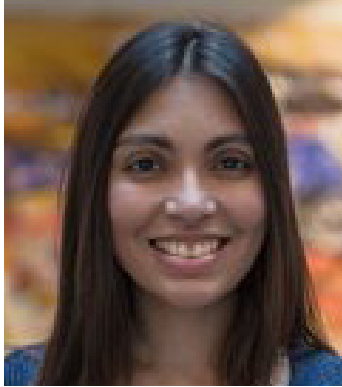


Finally, we want to offer that we understand that as you go through the programme, there will be times when you might feel overwhelmed or even a little lost. In those times, we encourage you to rely on peer support, take advantage of the LSE's care offerings, explore London as a form of discovery and self-care, and enjoy the moment. Perspective is everything, and you will have moments where it will be particularly important to keep yours positive. You were accepted because of your talents and promise; you belong in this space, in this moment. You are not alone, even when overwhelmed. Enjoy the process and remember there are always supports around you, including your mentor, peers, professors, and me as your Programme Director!



MSc Gender, Development and Globalisation

Welcome from Dr Sharmila Parmanand, Programme Director



A very warm welcome to the Department of Gender Studies and the **MSc Gender, Development and Globalisation (GDG) programme**. As you embark on one of the most exciting experiences in your life filled with new opportunities for academic and personal growth, I encourage you to make the most of your time in the programme, Department, the wider LSE community, and the vibrant city of London.

In the Gender, Development and Globalisation programme, we apply theories of gender to understand, critique, and reimagine globalisation and development. This involves engaging closely with questions of inequality in the household, the family, the market, the community, and the state, amidst a changing global economy and political, environmental, and health challenges. In thinking about development, we think critically about global systems and historical processes rather than merely identifying problems in the global south. We also look at how feminist activists in different contexts push for the incorporation of key issues into the global development agenda. Throughout all these discussions, we will be reflecting on how to bridge feminist politics and development practice. This helps prepare you for careers in academia, policy-making, and the non-profit sector.

GDG students take four compulsory foundational courses (GI424: Gender Theories; GI499: Dissertation; GI409: Conceptual Foundations in Gender, Development and Globalization; and GI420: Feminist Perspectives on Transnational Development), and choose from a range of optional courses that align with your interests.

As part of your LSE journey, you have access to a valuable array of academic and non-academic resources including Departmental and LSE-wide events, academic development resources available via **LSE LIFE** and the **LSE library**, professional development and support through **LSE Careers**; and wellbeing support from the **Disability and Mental Health Service**. These and many other resources available to you are designed not only to support you in achieving your academic goals but also to expand your professional horizons while enjoying your time at the LSE.

While you will find these resources useful as you make progress in the programme, it is equally important to remember the value of creating networks and friendships with peers who share similar interests, as these will be a part of your lives and professional communities well beyond the length of the programme. I look forward to helping facilitate these connections and thinking and learning with you when you arrive in September.



MSc Gender, Media and Culture

Welcome from Dr Sadie Wearing, Programme Director



Welcome to the Department and to the **MSc Gender, Media and Culture (GMC)** Programme! We hope you will enjoy this time of study and research with faculty and peers and will make the most of this unique experience.

Now, when crisis seems ever present, the urgent but at the same time patient work of critical cultural analysis is key. Contemporary times confront us with difficult challenges, but also with the chance to critically reflect on how to promote a more just and less exclusionary present and future for all. Mediated societies in our globalised world have a key role in how we learn to think and feel about the value of life, social differences, inequality, justice, freedom, our ethical commitments, and the meaning of our own work. In this spirit, we welcome you to our research community and encourage you to develop your own, critical gender lens to analyse the most relevant debates, representations and discourses that shape contemporary life.

At the Department of Gender Studies, we cherish the art of dialogue and value collaborative work; we advocate teaching and research excellence, which, we believe, emerges at its best when commitment and care come first. We promote an inclusive and joyful learning environment where everyone can feel at ease. In our classes and events students from our MSc programmes and faculty will meet in ways that reflect this philosophy and we may engage with guest scholars from around the world, sharing ideas and serious discussions, but also laughter and life.

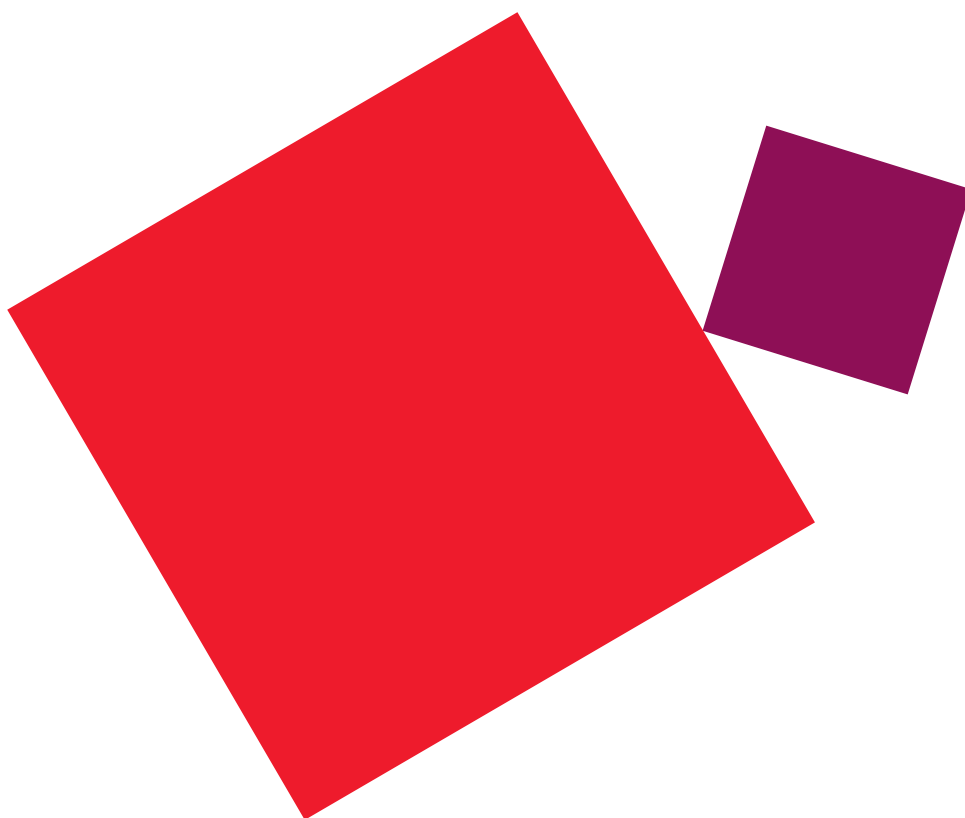
As a student on the Gender, Media and Culture programme, your teachers will help you perform at your best, and open new possibilities for you. You will have the opportunity of attending exciting courses from a wide range of fields and meeting experts from different interdisciplinary perspectives from the Department of Gender Studies, the Department of Media and Communication, and LSE as whole. The MSc programme will provide you with the best possible platform to build your own path according to your interests, complementing compulsory courses with a range of options you can choose from.

Our aim is to create a space to think together about the challenges that cultural representations present to our understanding of gender relations, bringing together sound theoretical background, case-based analysis, and innovative contemporary debates. Sharing our views on the materials we are going to study together will allow us to enhance our knowledge of how gender traverses and is traversed by other social categories such as race, age, sexuality, (dis)ability, economic inequalities, religion, or country of origin, and how the entangled work of these categories regulates the social



organisation of life. This year will surely be an inspiring one for you. It will also be moving and intense, both intellectually and emotionally. You will encounter challenging new materials, a multiplicity of visions, meet people from many different places, and (we hope) make new and potentially lifelong friends.

Year after year, our students keep telling us that this has been a unique experience for them. We trust that this coming year at the LSE Department of Gender Studies will be an unforgettable experience for you too.



MSc Gender, Peace and Security

Welcome from Dr Aiko Holvikivi, Programme Director



A very warm welcome to LSE Gender! This department offers a unique and exciting interdisciplinary and transnational intellectual space, and we are all looking forward to you joining and shaping this community. Here you will engage with a range of scholarship, activism and media – as well as the academics who form part of the teaching team – as you begin your master's study in **Gender, Peace and Security (GPS)**. We are excited to meet you in September, and to see the contributions you, as the latest group of emerging scholars and practitioners in this vibrant field, will make over the course of this academic year and in the future.

Did you know that our GPS MSc programme is one of only a few programmes in the whole world? While a few other programmes and certificate and diploma programmes began a few years ago in gender, peace and security in places like Ghana, Norway, Australia and the US, LSE was the first place to offer an MSc in Women, Peace and Security in 2017-2018. The programme's origins began with a desire to engage directly with the United Nations' Women, Peace and Security Agenda established in the early 2000s after the passing of UN Security Council Resolution 1325, as well as with the growing body of academic writing advocating for inclusive, international, intersectional, decolonial and queer perspectives on peace and security.

The best way to describe the programme is that it consists of a balance of critical feminist-methodological and gender-theory approaches and in-depth, qualitative explorations of experiences, practices and policies that relate to the situation of gendered subjects in pre-conflict, conflict, and post-conflict contexts. The programme provides foundational training in key skills and concepts through three compulsory courses (GI424: Gender Theories; GI425: Introduction to Gender, Peace and Security; GI499: Dissertation) and provides you with a range of semi core and optional courses to allow you to pursue your particular interests and to explore key issues in a collective and collaborative fashion with your MSc cohort.

Students from many different backgrounds will take the core courses; a scenario which provides opportunities for new conversations and to think differently and imagine alternative, and perhaps more equitable, worlds for those living in the wake of war, conflict and insecurity. Because the programme is centred on interdisciplinary, transnational, and intersectional gender theory and practice, readings and case studies will stretch your knowledge in both breadth and depth. There will be a lot of new, and sometimes challenging, readings from a variety of sources, enabling close analysis of policy frameworks and UN Security Council resolutions, as well as a simultaneous and deep engagement with theoretical insights on gender, peace and security more broadly.



London is an excellent hub for thinking about, and discussing in detail, the contours of Gender, Peace and Security as an academic field of study, a policy imperative, a practical challenge, and a transformational opportunity. As well as engaging with our own vibrant events programme, do explore seminars and lectures at neighbouring institutions (see especially King's College London and SOAS) and other departments and centres at LSE (International Relations, European Institute, Africa Centre, and the Centre for Women, Peace and Security, to name a few). Enjoy the cultural events on offer both at LSE and beyond, remember to eat as healthy as you can, and most importantly, where possible, take sleeping, resting and relaxing seriously.

We are embarking on this exciting journey amidst multiple global crises, with unequally felt repercussions. These crises highlight the urgency and necessity of the learning and work we do, but can also make it challenging. All of us at the Department are committed to supporting your learning and to fostering the sense of community this space provides. We hope you will share our commitment to care and solidarity, in order to create the conditions where we can collaboratively think deeply about challenging topics, and imagine and create different worlds.

MSc Gender, Policy and Inequalities

Welcome from Professor Wendy Sigle, Programme Director



As Director of the **MSc in Gender, Policy and Inequalities (GPI)**, I am delighted to welcome you to the GPI Programme at the Department of Gender Studies. For the past three decades (and a bit), the Department has served as an interdisciplinary focus for gender research in the School. The Department brings together faculty members with a range of disciplinary backgrounds and a truly outstanding team of administrators. Together, we strive to create a collegial and stimulating intellectual environment.

Our shared commitment to interdisciplinarity, research-led teaching, and social justice is reflected in the design and delivery of the GPI Programme.

The GPI programme is truly distinct both nationally and internationally. Prospective applicants have told us that they have found no other programme which combines the foundational training in gender theory with a specific consideration of how to bring that knowledge and expertise to the mainstream policy literature. The students who enrol on our programme are, in a range of ways, exceptional. During their time with us, students form strong friendships and create professional networks that serve them - and society - for many years after graduation. This is a testament to the values, passion and knowledge you bring with you and share so generously.

It goes without saying that you are embarking on your postgraduate study at an uncertain and challenging time. The legacy of the pandemic can still be felt in many areas of our lives, new sites of conflict and violence are erupting throughout the world, while politics and policy contest justice claims which were, only a few years ago, assumed to be settled. We are living in a time when critical thinking skills and feminist praxis are urgently needed.

Our commitment to fostering engagement across disciplinary, intellectual and political boundaries in our research and teaching is often challenging. But when those challenges are met with curiosity, compassion, and perseverance, the experience is ultimately, by all accounts, extremely rewarding. Do share your thoughts, difficulties and triumphs with us in seminars and in office hours. Interact with your peers. Students at LSE Gender are an invariably amazing group of people, and you have much to learn from each other. Make sure to complement your coursework by taking advantage of the exceptionally vibrant research culture at LSE by attending research seminars and public lectures. Finally, whether you are familiar with London or not, try to make the time to go out and enjoy this fascinating city, its people, culture, architecture, (vegan!) food, green spaces, and so much more.



Course Selection: Information and Guidance

When can I select my courses?

- You'll be able to browse (but not select) courses from Monday 22 September until Thursday 25 September. We encourage you to use this time to get used to using the [LSE for You](#) (LFY) system.
- You'll be able to officially select courses from 10am on Thursday 25 September.
- The deadline to have confirmed your course selections in [LSE for You](#) is 5pm on Friday 10 October.
- We advise you to be prepared to request your preferred courses as soon as possible after the system opens, from **10am on Thursday 25 September**. We've left the [Welcome Schedule](#) free on this morning to allow you some time to focus on this. There is often a queue to access the system so it may take longer than expected.

Where can I find information about the available courses?

- The [programme regulations](#) list all the courses which are compulsory and optional for your degree.
- Watch our [course convenor videos](#) to discover more about the content of Gender Studies courses.
- Read course details in the [Course Guides](#). Department of Gender Studies course codes start with 'GI'.
- View the online teaching timetables to check whether the courses you'd like to take are likely to clash: [Timetable publication information \(lse.ac.uk\)](#)
- For information about the course selection process for non-Gender Studies courses, please see the relevant course guide.

Which courses do I need to take?

- The [programme regulations](#) list the compulsory and optional courses for your degree.
- Courses that are compulsory for your degree are referred to as **Core Courses**.



- If your **programme regulations** require you to select one course from a given selection of courses, this is referred to as a **Semi-Core Course**. Your Programme Director will explain any semi-core courses to you in your “**Meet Your Programme Director**” session.
- If you are studying your MSc full time you will need to take courses to the value of 4 units in total.
- It is important that you take into consideration potential lecture and seminar clashes when applying for courses. Check the timetable **here**.
- Where possible, we recommend that you balance the number of units over the two terms. Overloading courses in one term can be challenging and is not recommended.

Can I take a course not listed in my programme regulations?

- In some cases, it may be possible to take non-Gender Studies courses from outside of your programme regulations, but you will need permission from your Programme Director.
- For information about the course selection process for non-Gender Studies courses, please see the **relevant course guide**.

Is there a limited number of places on courses and how are spaces allocated?

- All Gender Studies courses are ‘capped’, meaning that there is a limit to the number of students that can be accepted onto each course.
- Students should apply by 10am on Friday 26 September 2025 (i.e. within the first 24-hours of course selection opening). Please note the timing of your request within this period will not impact chances of being accepted onto the course. Offers will be made after 10am on Friday 26 September and will continue until all places are filled.
- Gender Studies Course Convenors will prioritise students for whom the course is semi-core (if applicable), followed by other Gender Studies students who applied in the first 24-hours (by 10am, Friday 26 September 2025), space permitting. Requests received after this timeframe, will be allocated randomly if space remains.
- Please do not email the Course Convenor with personal expressions of interest as these are not required and do not influence who is offered a place. Contact **gender@lse.ac.uk** with any queries.
- Courses taught outside the Gender Studies Department will have different policies for allocating spaces on courses. Please see the **relevant course guide** page for information.



How do I select my courses?

- You must select your courses through **LSE for You** (LFY). Sign in to LFY with your LSE username and password.
- You do not need to provide a written statement to apply for any Gender Studies courses.
- When you are offered a place, you will have 48 hours to accept it, otherwise it will 'time out' and the place will be offered to someone else.
- Section 5 of this document provides **detailed step-by-step guidance of the LFY course selection process**.

How many courses should I apply for?

- You must select your courses for the full year (both terms). There will be a short course selection window to allow you to amend your Winter term course selections at the start of Winter term, if needed.
- You can select up to a maximum of 4 units worth of courses (the amount required for your degree). Please note that this includes your compulsory required courses.
- If you have already accepted 4 units worth of courses and wish to apply for another, you will have to drop a course. Please be aware that if you do so there is no guarantee that you would then be offered a place on the new course you apply to. You will also lose the place on the course you had previously accepted. We recommend that you contact the Department of the new course to check if there is a place available for you, before dropping one of your courses.
- In the Winter term course selection period, you can apply for a 0.5 unit WT course without needing to drop a course first. If offered a place, you'll be prompted to drop a course before accepting your offer.

How do I select courses as a Part-time Student?

- If you are studying your MSc part-time you will normally take courses to the value of 2 units in each year (completing your compulsory courses in Year 1 and your dissertation in Year 2).
- Your Programme Director or Academic Mentor can advise before making your final decision, as some courses may lead on from others.
- You should only enrol for courses in the academic year that you will be taking them, so you should not select **GI499** until your second year. Be aware that LSE for You may automatically enrol you for all compulsory courses so you may need to deselect GI499.



Do I need to sign up to take compulsory/core courses?

- Yes, you must register for compulsory/core courses in LSE for You, (for example, GI424 and GI499).
- The checkboxes for the compulsory/core courses for your programme should already be selected, but you will still need to 'submit' these selections in order to register for these courses on the system.
- LSE for You will automatically accept your registration request for your compulsory/core courses i.e. you don't need to wait for an offer.

Can I change my courses in Winter Term?

- There will be a short course selection window to amend your Winter term course selections at the start of Winter term, if needed.
- You will be able to make changes to Winter Term half units from 10am on Monday 19 January 2025 until 5pm on Friday 30 January.
- It is not possible to change full unit courses or half-unit courses that were taught in Autumn during this period.

Where can I get advice and support on my course selections?

- You will get lots of support, guidance, and opportunities to ask questions during Welcome Week, so please make sure to attend all the **Gender Studies Welcome Events**.
 - *"Welcome and Key Info with Your Programme Manager"*: this session will include guidance on the Course Selection process.
 - *"Department of Gender Studies Induction Session"*: this session will include a Q&A where you will be able to ask Gender Studies Course Convenors any questions about their course content, teaching, or assessment (please watch the videos first).
 - *"Meet Your Programme Director"*: Your programme Director will go over your Programme Regulations, including your core and semi-core courses.
 - *"Meet your Academic Mentor"*: You'll be able to ask any questions about your course selections.
 - *"Optional Course Selection Office Hour"*: Catherine will answer any questions about the Course Selection system.
- For any specific questions about course content, please contact the relevant Course Convenor.
- If you have any other queries about course selection, please email **gender@lse.ac.uk**.



Can I choose my Seminar Group?

- For courses with more than one seminar group, after receiving and accepting an offer for a course, you may be able to select your preferred seminar group in LSE for You. If spaces in seminar groups are filling up, you may be allocated by the Department to a group that works for your timetable.
- Please note that during the course selection window, we may need to move students to a different seminar group to accommodate students with clashes. Please keep an eye on your timetable for any changes to your seminar allocation.
- If you have any queries about seminar group selection, or if the group you require is full, please email gender@lse.ac.uk for help.

How do I access my Timetable and Moodle?

- The [full timetable for all courses can be viewed here](#).
- You will be able to view your personal timetable in Student [LSE for You](#). Please note this may take up to 24 hours to update after accepting a course offer.
- [Student Hub](#) allows you to view your timetable on your mobile, tablet and computer. If you sign up for Student Hub, when your personal timetable is published on LSE for You it will automatically sync to your in-app calendar.
- You'll be automatically enrolled onto the relevant course [Moodle](#) page a few hours after accepting an offer for a course. This is where you'll be able to access course materials including slides and reading lists.

How to Prepare for Course Selection

- Watch our [course convenor videos](#) to learn more about the content of Gender Studies courses.
- Familiarise yourself with the [programme regulations](#) for your programme.
- Read course details and browse indicative reading lists in the [Course Guides](#).
- View the online teaching timetables to check whether the courses you'd like to take are likely to clash: [Timetable publication information \(lse.ac.uk\)](#)
- Make a list of your preferred courses, and a few back-up options for each term, as you may not get spaces on all your preferred courses.
- Use the 'browsing period' (from 22 September) to familiarise yourself with the LFY system, so that you're ready for when course selection opens.
- Take a note of any questions you have and [attend all Gender Department Welcome events](#) for support, guidance and opportunities to ask questions.



Department of Gender Studies courses

GI402 Gender, Knowledge and Research Practice

This course introduces students to the central issues at stake in designing and carrying out gender research at graduate and postgraduate level and beyond.

GI403 Gender and Media Representation

This course aims to enable students to think critically about representations of gender in a range of different media.

GI409 Conceptual Foundations in Gender, Development and Globalization

This course will provide students with a knowledge of two key interconnected and intersecting literatures: gender and development and gender and globalisation

GI410 Screening the 21st Century: Cinema and Cultural Critique

This course offers students the opportunity to critically explore contemporary international cinema as a site for the interrogation of contested contemporary social and political processes such as migration, globalisation and conflict.

GI411 Gender, Post/coloniality, Development: Critical Perspectives and New Directions

The aim of this course is to introduce students to the growing body of scholarship that critically interrogates gender and developmentalism at various postcolonial sites.

GI413 Gender, Race and Militarisation

This course will provide students with an overview of militarisation and its gendered basis and effects.

GI414 Theorising Gender and Social Policy

This course aims to equip students with the knowledge and theoretical tools that will allow them to critically engage with social policy issues and debates

GI415 Gender and Welfare Regimes: Developments and Change

The course investigates the different ways in which gender is incorporated into national welfare states and the impact of national structures on the patterns and prevalence of gender inequalities.

**GI417 Feminist Population Politics**

This course considers both the politics of knowledge production in population studies and the politics surrounding international and national population policies.

GI420 Feminist Perspectives on Transnational Development

This course deals with theories relating to policy, politics and power in the field of gender and international development.

GI421 Sexuality, Gender and Culture

This course introduces students to historical and theoretical components of the field, and explores case studies of the development of sexual cultures, identities and social movements from the late 19th century to the present.

GI422 Transnational Sexual Politics

This course takes a case-study approach to questions of sexuality, gender and culture (in the first term) and to sexuality in the contexts of globalization (in the second).

GI424 Gender Theories: An Interdisciplinary Approach

The course aims to enable students to become familiar with the fullest range of gender theories with particular attention to the intersections of gender, sexuality and race.

GI425 Introduction to Gender, Peace and Security

This course provides a critical examination of peace and security issues affecting women in conflict and post-conflict contexts.

GI426 Gender and Human Rights

This course will provide the students with a transnational gender perspective on contemporary theories and practices of rights/human rights and humanitarianism.

GI427 Research in Global Gender (In)Security

This course provides an in-depth examination of peace and security issues from a gender perspective. The course explores issues related to but also exceeding the international Women Peace and Security agenda (WPS) and specifically considers areas not covered in as much depth in the foundational (GI425) course.



GI428 Bodies, Culture and Politics

The course will explore different constructions and understandings of gendered and sexualised bodies at the intersection between politics of resistance, arts, and cultural practices.

GI429 Archival Interventions: Feminist, Queer and Decolonial Approaches

This course will foreground an interdisciplinary approach to the archive that provides students with skills to approach archival work for their own research, and embed them in the critical work on archives that characterises much of the secondary and theoretical literature in the field.

GI431 Abolition and Anticarceral Feminisms

This course centers around the critical feminist inquiry: are prisons obsolete? The class will focus on the history, growth, and current functioning of global systems of stratification, surveillance, and segregation/detention with the critical goal of questioning the future of such carceral structures.

GI432 Transnational perspectives on gender, borders and migration

This course offers a critical, interdisciplinary exploration of transnational migration through an intersectional gender lens. It challenges dominant understandings of migration and migration management by tracing how contemporary mobility is shaped by historical processes of colonialism and global inequalities.

GI499 Independent Research Project

This course starts in the second half of the Autumn Term, and is designed to ensure students are fully supported with the conception, development and completion of their Independent Research Project. A series of 'milestones' or development stages, helps to ensure students stay on track with their project. After the Spring term, students enter the independent writing period and the dissertation is due for submission in mid-August. The GI499 Moodle course handbook will provide full details and timescales.

Assessment and Study Support

For full guidance and information about assessment in the Department of Gender Studies, please see our [Assessment and Study Support webpage](#). This includes detailed guidance on citing and referencing, the Department's Marking Criteria, as well as our policies on word limits, and extensions.

“

My experience in the Gender department has been amazing from beginning to end, absolutely life-changing, and I'm extremely proud to be part of this reality, to have met the amazing people that work and study there... I wish my MSc was never ending! ”

LSE Gender 2023/24 cohort



Key Information

Term Dates and LSE Closures – Academic Year 2025/26 

Student Services Centre 

Student Voice 

Student Partnership 

Quality Assurance 

Study and Career Support Services 

Equity, Diversity and Inclusion (EDI) 

Your Wellbeing and Health 

Exams and Assessments 

Assessment Misconduct 

Results and Classification 

Fees and Finance 

Codes and Charters 

Systems and Online Resources 

LSE Campus 

“ At LSE, you don’t just get to study our changing world, you can see it and experience it. With history being made every day, why would you want to be anywhere else? ”



Term Dates and LSE Closures

Academic Year 2025/26

Autumn Term: Monday 29 September – Friday 12 December 2025
Reading Week: Monday 3 November – Friday 7 November 2025
Winter break: Monday 15 December 2025 – Friday 16 January 2026
January Exams: Wednesday 7 – Friday 16 January 2026
Winter Term: Monday 19 January – Thursday 2 April 2026
Reading Week: Monday 23 February – Friday 27 February 2026
Spring break: Friday 3 April – Monday 4 May 2026
Spring Term: Tuesday 5 May – Friday 19 June 2026
Spring Exams: Monday 11 May – Friday 19 June 2026

LSE will be closed during the following periods*:

Winter Closure: Tuesday 23 December 2025 – Thursday 1 January 2026
Spring Closure: Thursday 2 April – Wednesday 8 April 2026
May Bank Holiday: Monday 4 May 2026
Spring Bank Holiday: Monday 25 May 2026
Summer Bank Holiday: Monday 31 August 2026

*Some buildings will remain open or operate reduced hours during public holiday and School closure days. Full details will be communicated in advance.



Student Services Centre

The Student Services Centre (SSC) is located on the ground floor of the Old Building. Advice and information is available on services including:

- **Support for new arrivals**
- **Student status documentation**
- **Course selection**
- **Immigration advice**
- **LSE ID cards**
- **TfL 18+ Student Oyster Photocards**
- **Exams and assessment**
- **Results and degree certificates**
- **Graduation.**

We are also a good point of contact to find out more about the support services available at LSE and we host specialist drop-in sessions. Visit lse.ac.uk/ssc for the latest information about our services, opening times and drop-in sessions.

Online pre-enrolment and campus enrolment

The majority of new students will be required to undertake a two-stage enrolment process: online pre-enrolment and campus enrolment. You will receive email notification when it is time to complete the pre-enrolment process for your programme. Campus enrolment takes place in-person and is where we will check your official documents, and you will be issued with your LSE Card. It is very important that you attend campus enrolment and with the [correct original documents](#). Usually, you can re-enrol online for subsequent years of study, but sometimes we may need to see you in person again.

For more information, visit lse.ac.uk/enrolment



Student status documentation

During your time at LSE you may need official documentation to prove that you are studying with us. A Certificate of Enrolment provides proof that you are enrolled as a current student at LSE to organisations such as council tax offices, embassies and banks. For more information about what a Certificate of Enrolment shows visit

lse.ac.uk/studentletters

You can order a self-service Certificate of Enrolment which will be delivered immediately to your LSE email address as a PDF. If the standard letter is not sufficient, you can request a bespoke Certificate of Enrolment to be produced by the Student Services Centre. **We will do our best to provide the information required, but this cannot be guaranteed.** Please bear in mind that during peak periods bespoke letters may take longer to produce. For more information about both types of Certificates of Enrolment and how to order, please visit lse.ac.uk/studentletters

The Student Services Centre (SSC) also offers a range of other documents including Certificates of Course Selection and intermediate transcripts. For more information about the types of documents available, how to request letters, and to access our enquiry form, please visit lse.ac.uk/studentletters

Your LSE Card

Your LSE card provides access to buildings and acts as your library card. It is important that you keep it safe and never share it with anybody else. If your LSE card is lost, stolen or damaged visit lse.ac.uk/studentidcards to find out how to get a replacement.

Student Advice and Engagement

The SSC has a dedicated Student Advice and Engagement Team that can provide advice on academic (particularly non-progression, interruption, withdrawal, regulations and exams), and immigration matters.

If you are not sure who to contact about a query or question, then the Advice and Engagement Team will be happy to help. You can contact the team via the enquiry form at lse.ac.uk/studentadvice

Immigration Advice

The Advice and Engagement Team are the only team able to provide detailed immigration advice on UK visas for international and EU/EEA students at LSE. You can find a lot of detail on their web pages, which are updated each time the rules change. The best way to contact the team is to use the [visa advice query form](#) or to attend one of their bookable visa advice quick consultations, or log-in to their dedicated visa advice live chat.

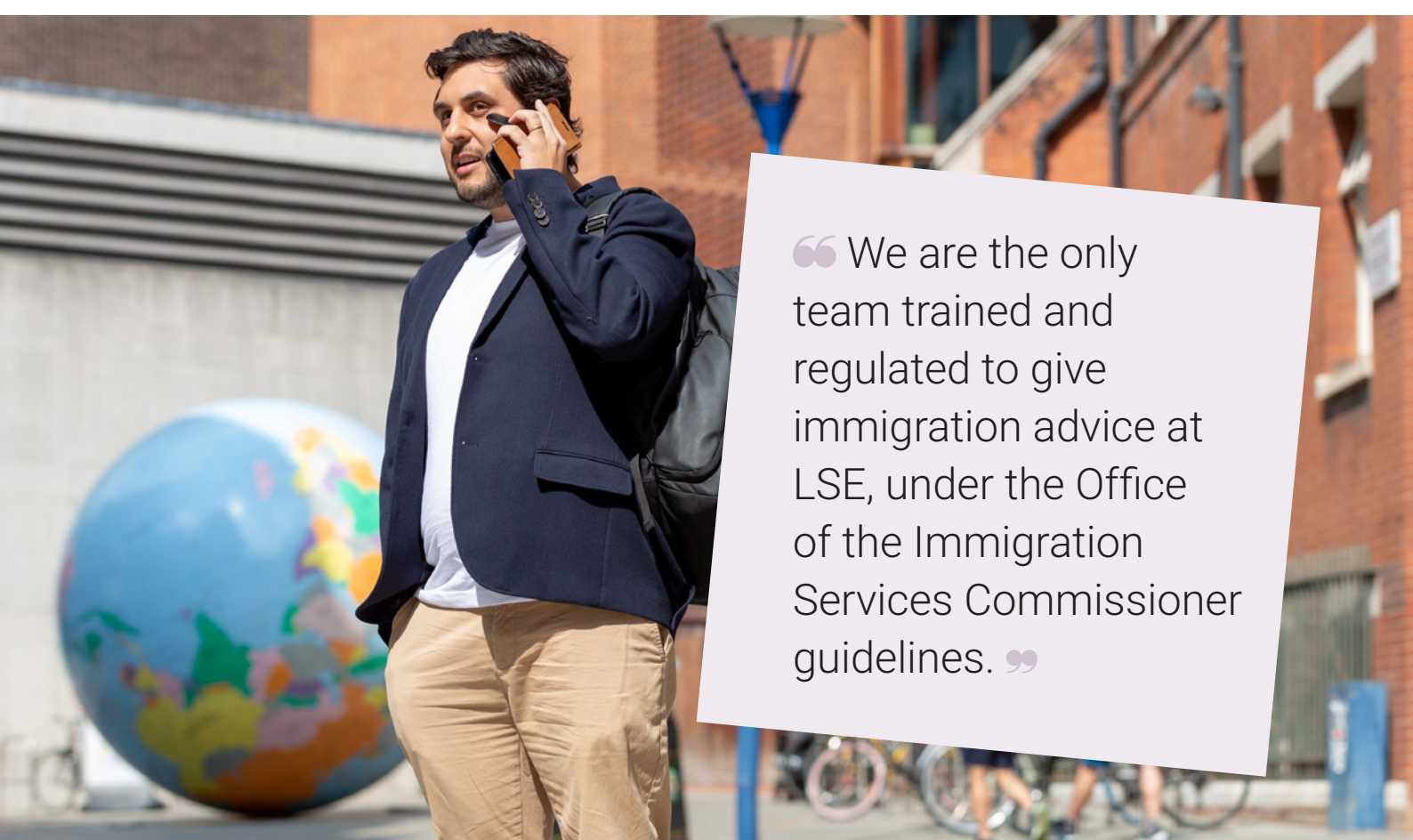
What do I do if...

The SSC have developed a series of answers to common “What do I do if...” questions. These cover a broad range of topics including, what to do if you’re unwell during an exam; become pregnant; change your name; or want to change degree programme. You can find these questions and answers at lse.ac.uk/what-if

Interruption

In certain circumstances you can take a year-long break in your studies (which we call an interruption) with approval from your academic department and the School.

You are usually required to return at the start of either Autumn Term or Winter Term the following year as appropriate. Spring Term interruptions are not possible. For more information visit lse.ac.uk/interruptions



“ We are the only team trained and regulated to give immigration advice at LSE, under the Office of the Immigration Services Commissioner guidelines. ”

Programme transfer

You can request to transfer from your current programme to another programme at the same level according to the School's regulations. There are usually restrictions or conditions on transferring programmes, and sometimes transfers are not possible.

All transfer requests need the approval of the new academic department you wish to transfer into before being authorised by the School. For more information visit

lse.ac.uk/programmetransfers

Change of mode of study

If you are studying a master's programme, and you need to change from full-time to part-time study due to your circumstances, you will need to seek approval from your academic department.

Changing from full-time to part-time study is generally acceptable up until the end of Winter Term Course Selection, as long as your selected courses can be amended according to programme regulations and in line with the teaching that you have already taken. Your fees will also be amended.

Changing from part-time to full-time may not always be possible, especially if you need a visa to study at LSE, and requests will be considered on a case-by-case basis.

It is not normally possible to study an undergraduate programme on a part-time basis. For more information visit lse.ac.uk/changemode





Withdrawal

Withdrawing means that you are leaving your programme permanently.

Before withdrawing you should consult with your Academic Mentor, and you may want to consider requesting an interruption instead, so that you have some time to consider your options. For more information visit lse.ac.uk/withdrawal

Regulations

You should familiarise yourself with the LSE regulations, policies and procedures to ensure you are aware of all necessary assessment requirements, how your final degree is calculated and what options are available if you experience problems during your studies.

Visit lse.ac.uk/calendar for more information on:

- General Academic Regulations
- Classification Schemes
- Assessment Offence Regulations
- Appeals Regulations.

You can also find a full A-Z listing of all of LSE's policies and procedures online at lse.ac.uk/policies

Student Voice

Student-Staff Liaison Committees

Student-Staff Liaison Committees (SSLCs) are one of the most important bodies in the School. They are a forum for students to discuss their experiences, both in and outside of the classroom, with LSE staff. SSLCs are a shared, collaborative endeavour between departments, the Students' Union, central School Services, and, most importantly, students themselves.

SSLCs are your chance to engage with LSE and enact positive change for the benefit of yourself, your peers, and even future cohorts.

At the start of the year, you will be asked by your department if you would like to represent your programme on the SSLC as a Student Academic Representative. By volunteering, you'll represent your peers and take a leading role in the student body.

More information, including access to minutes from SSLCs across the School, and other ways you can use your voice, can be found on the [student voice webpages](#).





Meet LSE leadership events

In the Autumn and Winter Terms, LSE hosts student-only events that give you the opportunity to discuss your experience as a student with LSE leadership, including the President and Vice Chancellor.

These events are an opportunity for you to meet leaders from across LSE in person to ask questions, raise suggestions and voice any concerns, plus the chance to meet students from other programmes.

You'll be invited to attend these events – look out for further details in Autumn and Winter Term.

Student Partnership

Change Makers

Change Makers is an opportunity for you to instigate positive changes at LSE.

Working alongside other students and LSE staff, you are invited to identify and research solutions to issues affecting student life at LSE and to start implementing them. Whether it's helping your department develop a new skills programme or making campus more accessible, this is your chance to create a real impact on the quality of the student experience at LSE. Applications to become a Change Maker will open in Autumn Term 2025. This is a new opportunity at LSE, and you can find out more at

lse.ac.uk/changemakers

Student Education Panel

The Student Education Panel is an opportunity for you to enhance education at LSE alongside students from other departments and levels of study and to gain insight into how the university works.

Around 50 Student Education Panelists meet several times throughout the year to consider a specific education-related topic, question or proposal. Drawing on your own experiences and ideas, you will generate insights to present at key education-related forums, and work in partnership with LSE and LSESU leaders to co-create a better educational experience for everyone. In recognition of your contributions, you will receive a voucher for every meeting you participate in.

Applications to join the Student Education Panel will open in Autumn Term 2025 and you can find out more at lse.ac.uk/studenteducationpanel





Quality Assurance

LSE's approach to assuring the quality of our teaching is set out in the [**Strategy for Managing Academic Standards and Quality**](#). As an awarding body LSE must be in a position to assure the standards of its degrees. At the same time, we believe that the design of quality assurance should respect different departmental cultures and academic histories. The strategy sets out broad principles and processes for assuring academic standards and for enhancing the quality of educational provision.

The overall framework includes devolved quality assurance arrangements for academic departments, with responsibility for the oversight and modification of existing provision resting with Departmental Teaching Committees.

The Teaching Quality Assurance and Review Office (TQARO) supports the activities of the Education Committee and several of its sub-committees, with further details available in the "Committees" section of the website at [**lse.ac.uk/tqaro**](https://lse.ac.uk/tqaro). TQARO also curates and publishes information about the School's academic offering, including programme regulations, course guides, and academic regulations in the School's [**Calendar**](#). In addition to oversight of curriculum management related activities, TQARO administers the appointment and payment of External Examiners, with further details available on the "External Examiner Processes" section of the website at [**lse.ac.uk/tqaro**](https://lse.ac.uk/tqaro). Queries relating to devolved quality assurance responsibilities, the work of Education Committee or the process for the consideration of proposals for new courses and programmes of study should be sent to [**tqaro@lse.ac.uk**](mailto:tqaro@lse.ac.uk); queries relating to external examiners should be sent to [**tqaro.external.examiners@lse.ac.uk**](mailto:tqaro.external.examiners@lse.ac.uk)

Student surveys

In both Autumn Term and Winter Term TQARO conducts course-level surveys to assess students' opinions of teaching.

Course survey scores are made available to course convenors, teachers, Heads and Deputy Heads of Departments, Department Managers, the Director of the Eden Centre, the Vice President and Pro-Vice Chancellors for Education and Faculty Development. In addition to producing reports for individual teachers, TQARO produces aggregated quantitative data for departments and School-wide bodies. Further information can be found online in the "Surveys" section of the website at [**lse.ac.uk/tqaro**](https://lse.ac.uk/tqaro)

TQARO also conducts annual programme-level surveys of undergraduate and taught master's programmes and supports LSE's participation in the National Student Survey in coordination with the Communications Division, Planning Division, DTS, and academic departments.

Queries relating to the delivery of teaching surveys at course- or programme-level should be sent to [**tqarosurveys@lse.ac.uk**](mailto:tqarosurveys@lse.ac.uk)

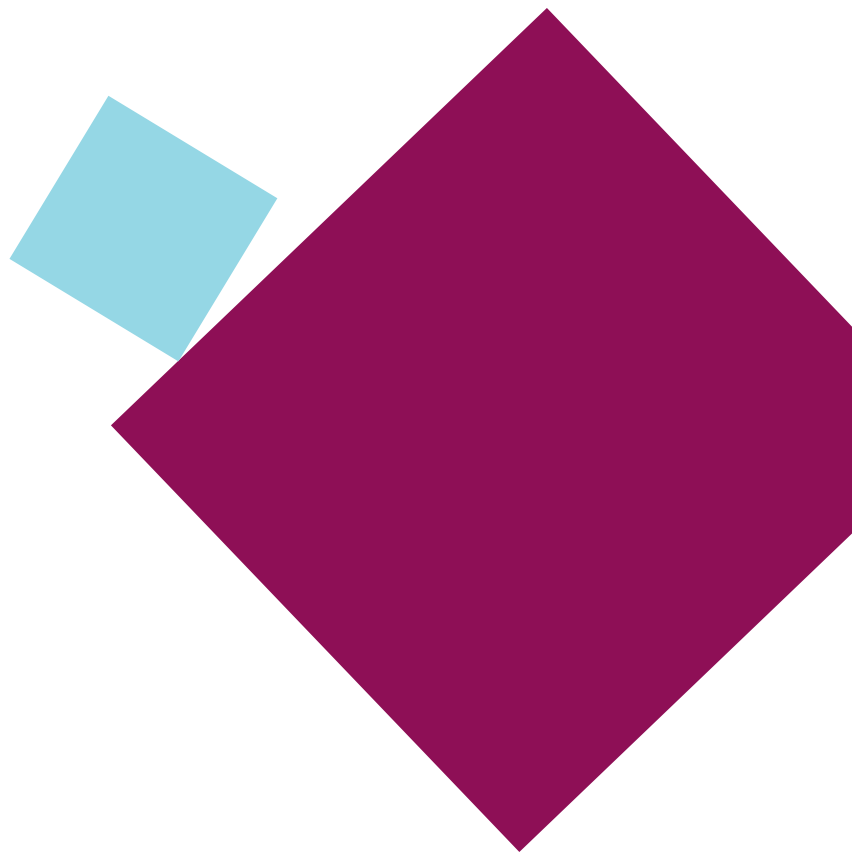
Study and Career Support Services

LSE LIFE

LSE LIFE is the place to discover and develop the skills you'll need to reach your goals at LSE, whether they concern your academic work or other personal or professional pursuits. LSE LIFE is here to help you find your own ways to study and learn, think about where your studies might lead you, and make the most of your time at LSE. It is also the place to come all year round to ask about the range of opportunities and services available across the School to help you achieve success, whatever 'success' means to you.

LSE LIFE brings together specialists from teams across the School – on the ground floor of the Library. At LSE LIFE you'll find:

- **Hands-on practical workshops** and **online resources** for effective reading, academic writing, critical thinking, managing your dissertation research, organising your time, and other key areas of university work.
- **Constructive conversations** and **workshops** to learn ways to adapt and thrive in new or challenging situations, including developing your skills for leadership; public speaking; connecting and collaborating with others; finding a healthy balance among study, work, rest, and fun; and thinking about life beyond university.
- **One-to-one appointments** for personalised advice on essays, participating in classes and seminars, revising for exams, studying quantitative subjects, or any other aspect of your studies at LSE. Or simply book an appointment – on campus or online – to talk through your ideas for an essay, a project, or your research.



- **Specialist advice** in areas like CV writing, English language, finding and referencing academic sources, research ethics and data management, statistics, and more.
- **A bright, flexible, and welcoming space to meet and work together** with students from other courses and departments.
- **Group visits and walks** to discover and take advantage of what LSE and London have to offer.

LSE LIFE is here to help you make sense of the opportunities on offer across the School and help you get connected with the teams, resources, events, and activities that you want to pursue.

Find out more at lse.ac.uk/lselife, or drop by with any questions (or just to pick up a lollipop!). LSE LIFE is on the ground floor of the Library, open Monday – Friday, 10am – 6pm.



[Listen to our podcasts](#)

LSE Library 

Language Centre 

LSE Careers 

LSE Volunteer Centre 

LSE Generate 





LSE Library

LSE Library is the major international library of the social sciences. The collections, both print and online, cover the discipline in the widest sense, and will support your studies and research.

The two main print book collections are:

- **The course collection**, located on the first floor, which holds multiple copies of essential books for your courses. Many of these titles are available online.
- **The main collection** is located across three floors, holding wider items for social sciences research.

You can use Library Search to find books and other materials for your studies via lse.ac.uk/library. Once you have found what you need, write down its location to help you find it in the Library. To borrow books, use your LSE card and the self-service machines on the ground floor. Taught students can borrow up to 30 books at any one time. You can renew your books online by logging into your Library account at lse.ac.uk/library. If you do not return books on time, you will be unable to borrow any more until your overdue item is returned or renewed. We do not charge fines on late returns.

Each department has a dedicated **professional Librarian**, a subject expert offering email support and in-person and online appointments to help you locate and access information resources on any topic. This support ranges from identifying key resources to support your studies to high-level systematic literature searching for researchers.

They also provide expert help in managing references.

The Library is a focal point of the School and we are open seven days a week during term time and vacation and 24 hours daily from the beginning of the Winter Term until the end of the examination period. There are over 2,300 study spaces, including group study rooms, and extensive IT facilities, including over 300 PCs, laptop points, a laptop loan service, wireless Internet access via eduroam, and photocopying and printing facilities.





Language Centre

Whether you are an international student looking for support with your English, are interested in taking one of our courses as a degree option, want to learn a new language or improve your current language skills, the Language Centre is here to help.

If English is not your first language, our support programme can offer help and advice throughout your degree. Best of all, it is free! English for Academic Writing courses are available for any taught student who does not have English as a first language. These weekly classes are taught throughout the Autumn and Winter Term and can help with academic writing for coursework. This support is delivered with LSE LIFE ([lse.ac.uk/ lselife](https://lse.ac.uk/lselife)). You can find out more information on what is on offer and how to sign up [here](#).

You may be eligible to take a language, literature or linguistics course as part of your degree programme. You can find out about our courses and your undergraduate degree [here](#).

Any LSE student can sign up for a non-degree extracurricular language course. As part of the LSE Language Policy, if you are a UK-EU undergraduate and you do not have a GCSE Grade 4 (or equivalent) in a language that is not your mother tongue, you are eligible to take a course for free!

For more information visit lse.ac.uk/languages



LSE Careers

Whether you already know where you want to go or you'd like to explore your options, LSE Careers is here to help you connect with your future – from working with you to understand your motivations, to providing opportunities for you to meet employers across a range of sectors.

How do I get started?

As an LSE student, you can use LSE Careers to access a range of careers support, from events and job opportunities to resources and careers appointments. We also provide bespoke services for Disabled students and PhD students.

Log in to our online careers portal (careers.lse.ac.uk) to:

- register for careers events to develop your skills or explore different employment sectors
- browse jobs and internship opportunities on our jobs board
- book a one-to-one appointment with a careers consultant
- update your preferences to receive careers information relevant to your career interests.

Visit our website (lse.ac.uk/careers) to:

- explore resources about choosing your next steps
- get insights into employment sectors and recruitment processes
- browse top tips for writing your CV and cover letters
- access online tools for practicing interviews and reviewing your CV
- be inspired by what LSE graduates have gone on to do.

Follow @LSECareers on [Instagram](#) and [TikTok](#) to stay up-to-date with upcoming events, expert advice and new resources.



LSE Volunteer Centre

The LSE Volunteer Centre is here to inspire and empower you to volunteer for causes that you are passionate about during your time at LSE. Volunteering is a great way to help develop personal and professional skills, meet new people and make a difference in your community. We are committed to making volunteering exciting and accessible, and we collaborate with students to enhance their volunteering experiences.

Information and Advice

We offer a range of ways to get involved from the start of your LSE journey, including connecting students with long-term and short-term volunteering with our hundreds of charity partners and one-off opportunities throughout term on campus. We begin each term with a Volunteering Fair, where we invite over 50 charity partners onto campus to speak directly with students. We also host a charity on campus weekly for Charity Tuesday, to spread awareness of their mission and volunteering opportunities. At any point of the year, students have access to our ongoing volunteering vacancy board, updated daily with opportunities from charity partners. You can book a meeting with our Volunteer Centre Manager, or other Volunteer Centre colleagues, for one-to-one support.

Volunteering Programmes

The Volunteer Centre also runs multiple exciting voluntary programmes, including the Community Engagement Programme, a voluntary consultancy, the Research Volunteering Scheme, an initiative for volunteer researchers, and Community Action Projects, an opportunity to develop your own volunteering project. These programmes offer students the chance to work with other students, collaborate directly with charities, and use their degree knowledge with the mentorship and support of the Volunteer Centre. These programmes are application-based, and information is available on how to apply during Autumn Term.

“ The feeling of fighting for a cause that you are passionate about is second to none, but the skills you gain from it are unparalleled. ”

Dan Lawes, International Relations and History, 2022



Volunteer Centre Space

You can also visit the Volunteer Centre on campus on the ground floor of **Lincoln Chambers**, Portsmouth Street! We encourage students to visit for our weekly open hours, one-off volunteering opportunities, or for information and advice in person. Our home is an inclusive space that welcomes any students looking to get involved in volunteering.

You can find out more, as well as the advice and support we can offer in our space on campus, at lse.ac.uk/VolunteerCentre or by following [@LSEVolunteering](https://twitter.com/LSEVolunteering).



[Read our blog](#)



LSE Generate

LSE Generate is the home of entrepreneurship at LSE.

We welcome all students and alumni – from those starting their journey in developing entrepreneurial skills to those who have already launched their ventures and are looking for business support. We focus on supporting and scaling socially driven startups on campus and across the globe (from Lisbon to Lagos!)

As a student, you'll have access to all our resources and our co-working space at the heart of the LSE campus to work on your business idea; as well as access to a variety of events throughout the year created to expand your skills, give you the tools to excel, and help you network with like-minded founders. Our programmes vary from dragons den style startup competitions, our flagship accelerator programme, industry panels, skill development workshops on a range of topics, entrepreneurship bootcamps, and even international treks!

Pop by and meet us in our co-working space (the GenDen) opposite the Student Services Centre on Clare Market.

Discover more on our website lse.ac.uk/generate, register with Generate to receive our monthly newsletter, follow us on all our social media channels at (Instagram and LinkedIn) [@LSEGenerate](https://www.instagram.com/LSEGenerate), and you can join our [Slack community](#) of over 1,500 members, where ALL the action happens!



Equity, Diversity and Inclusion (EDI)

Promote equity, champion diversity, and help develop an inclusive LSE

One of our guiding principles in LSE's 2030 Strategy is to sustain excellence through an inclusive and diverse community. We work to build a School – and a society – in which everyone is able to fulfil their potential, and everyone's contribution is valued.

In support of this, LSE has a number of important initiatives that are designed to lead to equity, diversity and inclusion for us all:

- **Ethics Code:** the LSE community is expected to act to the highest standards of ethical integrity, in accordance with the ethical principles set out in our Ethics Code. To read about the School's commitment to equality of respect and opportunity visit lse.ac.uk/ethics
- **Report and Support** is LSE's new case management system to address violence, discrimination and harassment. If you have experienced, or witnessed, any form of discrimination, bullying, harassment or sexual misconduct, we encourage you to report this to LSE.
- You can [report an incident online](#) anonymously or with contact details. If you report with contact details an adviser will be in touch within three working days to discuss the various options for getting support and/or handling your report through informal or formal means.
 - **LSE Safe Contacts** are trained members of staff offering confidential support and guidance to individuals who have experienced, or are experiencing any form of discrimination, bullying, harassment or sexual misconduct.
 - **Consent.Ed:** LSE's educational programme focused on consent, and fostering respectful and inclusive behaviour on campus. All students are expected to participate in the programme, though opting out is possible for personal reasons. Learn more about Consent.Ed [here](#).
 - **LSE's Independent Sexual Violence Adviser (ISVA) Service:** LSE's ISVA service is run by external specialist partners – Rape Crisis South London and SurvivorsUK. This service provides free, confidential and independent short-term emotional, and casework, support for any student who has experienced any form of sexual violence at any time in their lives. Any student can refer themselves for support. Learn more about the ISVA service [here](#).
- **AccessAble:** provides accessibility guides of all LSE campus buildings, ensuring inclusivity for everyone.



- **LGBTQ+ Inclusive Action Plan:** LSE is delivering six priorities to advance LGBTQ+ equity and inclusion. Informed by data, insight and co-created with the School community, they form an action plan that is co-ordinated by the EDI Division and accountable to the LGBTQ+ Steering Group.
- **LGBTQ+ (lesbian, gay, bisexual, trans, queer) Role Models and Allies Directory:** provides a network of informal contacts for the LSE community to share experiences, and support and learn from each other.
- **Our Race Equity Framework** has been developed to ensure students and staff benefit from a diverse and equitable education, research and work environment; fostering attainment and development opportunities for ethnic minorities. LSE have identified six key priorities to focus on, which together form our **Race Equity Action Plan**.
- Our **Athena Swan action plan** has been developed to support and transform gender equality. It supports the professional development and pay equity for women on all levels from PGR students to senior leadership. **Visit our Athena Swan website to learn more.**
- **LSE Students' Union (LSESU):** a student-led, not-for-profit organisation that represents all LSE students through their Part-time and Sabbatical Officers. You can view all student representatives, including Women's, LGBTQ+, Black, Asian and Minority Ethnic, and Neurodiversity and Disability Officers on the **LSESU website**.
- On the **EDI Team website** you can find more about our partnerships, training and workshops, plus:
 - **Inclusive EDI policies and resources:** the support available to members of minority groups at LSE, and expert EDI resources from our external partners.
 - **EDI News and Events:** updates on EDI cultural events, history month activities; and our new space on campus for students to hold gatherings, events, and initiatives promoting inclusivity and intersectionality.

If you would like to find out more about these and other initiatives, please contact the EDI Team on edi@lse.ac.uk



Your Wellbeing and Health

Student Wellbeing Service (SWS)

SWS aims to provide you with a single integrated source of help and assistance to ensure that you get the most out of your LSE experience.

Disability and Mental Health Service (DMHS)

DMHS are the first point of contact for students with disabilities, long term medical and mental health conditions, and Specific Learning Difficulties such as dyslexia.

DMHS can help you to create My Adjustments which is a way of putting in place agreed “reasonable adjustments” to support your studies. Advisers in DMHS can potentially set up one-to-one learning support, mentoring and help you access assistive technology designed to remove barriers to studying. The earlier that you let DMHS know about your condition the earlier they can work with you to put appropriate support in place. For more detailed information about My Adjustments, and to apply for My Adjustments, visit lse.ac.uk/myadjustments

Visit [Booking an appointment](#) to book a DMHS Appointment.

Support for your wellbeing

Any student looking for support for their wellbeing can book a 30-minute Wellbeing Appointment. This provides an opportunity to discuss any issues you are experiencing, and an opportunity to explore what would be most useful to you, including: one-to-one support (eg, counselling), groups, workshops, online resources, self-care strategies and referrals to other LSE and external services.

Visit [Booking an appointment](#) to book a Wellbeing Appointment.

Groups and Workshops

SWS also organises groups and workshops to support students experiencing stress, anxiety or other issues. Details of these groups can be found [online](#).

Peer Supporters

Peer Supporters give you the opportunity to talk to fellow students about anything that is worrying you. Peer Supporters are trained to offer confidential emotional support, help and reassurance. You can find out more about the scheme and arrange a chat with a Peer Supporter at lse.ac.uk/peersupport



Health care in the UK

You are likely to need to access medical care while you are at LSE, even if this is just for routine appointments. In the UK most health care is provided through the National Health Service (NHS).

You are typically eligible for free treatment on the NHS if you fall into one of the following categories:

- **You are a UK resident**
- **You have a Student visa and have paid the Immigration Health Surcharge (IHS)**
- **You have applied for the EU Settlement Scheme and hold either Pre-settled or Settled status.**

This list is not exhaustive and was correct at the time of print. The UK Council for International Student Affairs maintains an up-to-date listing on their website available at ukcisa.org.uk

If you are unfamiliar with the NHS, search for “NHS Services explained” to find out more. You are usually required to register with a local General Practitioner’s (GP) surgery before you can book an appointment. You should register as soon as possible and not wait until you are unwell. The nearest GP surgery is St Philips Medical Centre which is based on the second floor of Pethick-Lawrence House. This surgery will register most LSE students. For more information about the services offered and how to register please visit stphilipsmedicalcentre.co.uk or call **020 7611 5131**.

Alternatively, you can find your nearest GP by using the GP finder function on the NHS website available at nhs.uk

As well as dispensing medicines, pharmacies can also offer advice on common health problems. You do not need to make an appointment, just visit a pharmacy and ask to speak to the duty pharmacists. In an emergency you should dial **999** to call an ambulance. You can also visit your nearest accident and emergency (A&E) department at your local hospital or visit an Urgent Care Centre.

For further information about health care, including details about dentists and opticians, visit: lse.ac.uk/studenthealth



LSE Faith Centre

The Faith Centre is open to students of all faiths and none. It's home to LSE's diverse religious activities, transformational interfaith leadership programmes, and provides spaces for worship, prayer, and quiet reflection.

Finding your feet

It can be challenging arriving in a new city for a new start. We want to help you settle into London and find a community that suits you – and there are lots of options!

We provide spaces for LSESU Faith Societies to meet, worship, and plan their activities. Details of contact information for faith groups and other helpful information can be found in our [resources](#).

Wellbeing

Looking to recharge and reconnect? Explore our wellbeing activities on offer: from guided meditation to yoga – as well as dedicated [spaces](#) for prayer and reflection – there's something for everyone. Find out more on our ["wellbeing" page](#).

Facilities

The Faith Centre comprises Islamic Prayer Rooms, a space for silent prayer/meditation (The Cave), and a multifaith space (The Desert Room) which is bookable for LSESU Faith Societies or faith/wellbeing-based staff groups. Find out more [here](#) or email faithcentre@lse.ac.uk for booking enquiries.





Support

You can contact the Faith Centre Director and Chaplain to LSE, Revd Dr James Walters, on j.walters2@lse.ac.uk for confidential support regardless of your background or beliefs.

We also have Muslim, Catholic, Jewish, and Orthodox Associate Chaplains, whose contact details can be found on the Faith Centre's ["People" page](#).

Beecken Faith and Leadership Programme

Religion has the power to challenge, connect, and transform. Our flagship faith and leadership programme invites all LSE students to engage deeply with difference, ask big questions, and build bridges across beliefs. These free, extracurricular sessions are where leadership meets reflection. Learn more about the module [here](#).

LSE Religion and Global Society

The Faith Centre is also home to the Religion and Global Society research unit; an interdisciplinary unit conducting, coordinating, and promoting religion-related social science research at LSE.

LSE Religion and Global Society Blog

The [LSE Religion and Global Society blog](#) is an interdisciplinary platform that explores the place and role of religion in our globalised world. The blog is a platform for experienced and early career academics, PhD and Master's research students, and other expert commentators to share their insights on this complex, wide-reaching topic. We welcome contributions from all researchers working on religion and global society.

If you are interested in contributing to the blog, have a look at [our guidelines](#) or get in touch with us at faithcentre.rgs@lse.ac.uk

Religion Scholars Network

This is a network for current LSE PhD candidates and post-doctoral researchers across departments whose work relates to the social scientific study of religion. We offer an invaluable opportunity to collaborate with peers across disciplines through informal events held throughout the year. For more information contact us at faithcentre.rgs@lse.ac.uk

Keep up to date with the Faith Centre: [X](#) | [Facebook](#) | [Instagram](#) | [LinkedIn](#) | [TikTok](#)

Visit us: 2nd Floor, SAW Building, 1 Sheffield Street, WC2A 2AP



Exams and Assessments

Candidate numbers

Your candidate number is a unique five-digit number that ensures that your work is marked anonymously. It is different to your student number and will change every year. Candidate numbers can be accessed in early Autumn Term in Student LFY.

Exam timetables

Course by course exam timetables will be available [online](#) ahead of each exam period. For January exams the timetable is usually available in mid to late December; for Spring exams it is usually available in early March; and for students taking in-year resit and deferral exams, it is usually available in late July/early August. Closer to each exam season, you will also be sent your personal exam timetable detailing your room and seat information for each exam. Please visit the exam timetable [webpage](#) for full details of release dates for this academic year.

Exam procedures

Anybody taking exams at LSE must read the Exam Procedures for Candidates. It contains all the information that you need to know and is updated each year. You must ensure you are aware of the rules at LSE and be prepared for your exams to avoid problems on the day which could result in allegations of misconduct against you or confiscation of non-permitted items.

The document is less than fifteen pages and covers topics ranging from candidate numbers, permitted materials and e-exams, to what to do if things go wrong. You can download your copy at lse.ac.uk/exams

You may only use a calculator in an exam if this is permitted by the relevant academic department. If you are permitted a calculator, it must be one of the approved models. For more information on the types of calculators allowed, please read the Exam Procedures for Candidates. If you bring an alternative model, it will be removed by invigilators. The permitted calculators are readily available in many supermarkets, online retailers and in the LSE Shop.





Central exam adjustments

Central Exam Adjustments (CEAs) can be put in place if you have a documented medical, physical or mental health condition and/or a specific learning difficulty such as dyslexia or dyspraxia. The purpose of CEAs is to provide an environment that gives all students an equal opportunity in exams. These adjustments are confidential and will not be listed on your degree certificate or transcript. In most cases you should apply for CEAs as part of getting your My Adjustments in place. However, there is a different process for applying for CEAs for short-term, unexpected, conditions. For more information, including deadline dates for applications, visit lse.ac.uk/CEA

e-Exams

e-Exams are exams that take place in-person and under invigilated exam conditions, the same way that they are for handwritten exams. Instead of completing your answers on a paper script, you use your own personal device to type your answers and submit electronically.

The platform currently used by LSE is Digiexam. This works by locking down your personal device to create a secure exam environment where you can write your answers.

Not all exams are e-Exam enabled. Please see list of e-Exam enabled courses on the e-Exams webpage. For further information visit [e-Exams \(lse.ac.uk\)](https://lse.ac.uk/e-Exams)

You will be able to bring one device (laptop or tablet with an integrated keyboard) to your e-enabled exams. Please see the “Device requirements” section on the [webpage](#) for more detailed information.

You won't be able to have any peripheral items eg, external mouse, keyboards, laptops stands, etc. with you during an e-Exam unless that item is part of your CEAs. If you have a documented medical, physical or mental health condition and/or a specific learning difficulty and have need of additional equipment as a result, you must apply for CEAs.

Fit to sit policy

By attempting any type of assessment, including but not limited to sitting exams, submitting essays, coursework, class participation, group work, presentations, or dissertations, the School will consider you have declared yourself fit to do so. If you experienced disruption to your studies (including but not limited to illness, injury or personal difficulties) you must think carefully about whether you should attempt the assessment or whether you should consider requesting an [extension](#) or [deferral](#). Requests for an extension or deferral must be made in advance of the assessment deadline.



Extension policy

If you have difficulties in the lead up to an assessment deadline but think you may be able to successfully submit if you had extra time, you should seek an extension request. You must make this request before the deadline has taken place and you will need permission from the Department responsible for the assessment. For more information visit lse.ac.uk/extensionpolicy

Deferral policy

If, having been granted an extension you feel you require more time to submit the assessment, your extension request was not approved, or the assessment in question has a static deadline such as an exam or online assessment released at a specific time/date, you should consider requesting a deferral. You must complete the online deferral form and submit evidence no later than 24 hours before the submission deadline or starting time of an exam. For more information visit lse.ac.uk/deferral

Exceptional Circumstances

If, having submitted an assessment you feel your performance was impacted by circumstances beyond your control, you should submit an Exceptional Circumstances (EC) Form and corroborating evidence to the Student Services Centre by the stated deadline. Such circumstances could include (but are not limited to):

- **failing to submit an assessment or sit an exam which you did not defer**
- **experiencing difficulties which could have affected your academic performance in an assessment**
- **adjustments such as CEAs, My Adjustments or deadline extensions that you feel were insufficient to compensate for the impact of your circumstances**
- **a late diagnosis of a condition meaning that you could not apply for adjustments until after you had completed some or all assessments.**

Submitting an EC Form is the only way for you to alert the Exam Boards to the circumstances which may have affected your performance. For more information and deadlines visit lse.ac.uk/exceptionalcircumstances

Missing assessment deadlines

If you miss an assessment deadline (including an extended deadline) you should submit your work as soon as possible. Normally, the following **late penalties** would be applied unless you can demonstrate a good reason (normally supported by evidence) for not being able to submit on time. If you submit late, you should inform the Department responsible for that assessment of your reasons for not being able to submit on time as soon as possible. This will allow them to consider if they are able to lift any late penalties that are applied.

Academic Integrity Awareness Week

The Student Regulations Team (from the Student Services Centre) together with colleagues from LSE LIFE and LSE Library, host a variety of events to increase students' awareness of the importance of academic integrity and to improve students' understanding on what plagiarism is and how to avoid it. Our annual **Academic Integrity Awareness Week** will be held in Week 7 of Autumn Term (10-14 November 2025) when you are encouraged to challenge your understanding around citation best practices, the definition of plagiarism and how to improve your academic writing.





Assessment Misconduct

All summative assessments that you submit to the School are subject to the School's Regulations on Assessment Offences. You are expected to have read and understood these regulations before you submit your work to the School. If you are found to have committed an assessment offence, such as plagiarism (either deliberate or accidental including self-plagiarism), exam misconduct, collusion, contract cheating or using Artificial Intelligence software, you could be expelled from the School. For more information and support regarding the School's expected standards of academic integrity visit lse.ac.uk/assessmentdiscipline

When you submit your summative assessments (assessments that count towards your mark in a course) to the School you are expected to have read and understood the following academic integrity statement:

By submitting work to the School you confirm you will abide by and uphold the School's Code of Good Practice, Ethics Code and academic integrity as outlined in the School's Regulations on Assessment Offences and Department guidance and you also confirm that:

- the work in this assessment is solely your own; and
- you have not conferred or colluded with anyone in producing this specific assessment*; and
- you understand the use of AI tools to help with any part of your assessment is strictly prohibited unless some use is permitted as defined by the Department responsible for the assessment (see Departmental guidance); and
- where necessary, you have clearly cited and referenced the work of others appropriately to make clear which parts are your own work; and
- your submission does not re-use substantial/verbatim materials you have previously submitted to the School or elsewhere. To note, in some cases expanding on earlier formative or summative work may be permitted as defined by the Department responsible for the assessment (see Departmental guidance); and
- you understand the School has the right to ask you questions about the originality of your work if deemed necessary.

**It is acceptable to consult with LSE LIFE for general study skills questions but not questions specific to the content of a particular assessment.*

You can seek advice about the School's rules regarding academic integrity from the Library (visit lse.ac.uk/library) and LSE LIFE (visit lse.ac.uk/lse-life)

You should also ensure that you adhere to the School's Research Ethics Policy and Procedures where appropriate when conducting research. Failure to obtain the necessary Ethics Approval for your research could result in your conduct being considered under the School's Research Misconduct Procedure. For more information visit lse.ac.uk/ethics

Results and Classification

Results

Final results are available once the relevant School Board of Examiners has ratified them. Provisional results are available for students taking January exams and for 12 month master's students.

Results are not released to students who owe debts to the School.

For more information on how and when results are released visit lse.ac.uk/results

If you need to take a deferred or resit assessment, more information about the resit period can be found at lse.ac.uk/re-entry

Classification schemes 

Transcripts 

Degree certificate 





Classification schemes

Degrees are awarded according to the classification scheme. These schemes are applied by the Boards of Examiners when they meet to ratify your results. You can find the classification schemes at lse.ac.uk/calendar

Transcripts

Continuing students can request [intermediate transcripts](#) through the Student Services Centre immediately after ratified results have been published. Final transcripts are made available electronically through Parchment (formerly known as Digitary CORE) which allows them to be easily shared.

For more information about final transcripts please visit lse.ac.uk/transcripts

Degree certificate

Depending on when you are awarded your degree, you may have the opportunity to collect your certificate at graduation. Any certificates that are not collected are posted to the permanent home address we have on record. For more information, please visit lse.ac.uk/degreecertificates



Fees and Finance

Fees

All administration around your fees is handled by the Fees, Income and Credit Control Team.

LSE offers two options for payment of your tuition fees. You can either pay them in full prior to enrolment or by payment plan. If you have not paid your fees in full before you enrol you will be placed on a termly payment plan. You are expected to pay one third of your fees by:

28 October 2025 28 January 2026 28 April 2026

For payment plan options relating to Executive programmes, please see [**Instalment options Executive Programmes**](#).

For tuition fee levels please visit [**lse.ac.uk/tableoffees**](https://lse.ac.uk/tableoffees)

To pay online or to find out about the different payment methods available, visit [**info.lse.ac.uk/payments**](https://info.lse.ac.uk/payments)

Once you are enrolled you can access your financial details at any time to review your tuition and accommodation fees, invoices, payments and instalment arrangements by accessing the Student Finance Hub. Please visit our webpage to get full details [**lse.ac.uk/ficc**](https://lse.ac.uk/ficc)

Unfortunately, it is not possible for you to pay in person.

The Fees, Income and Credit Control Office also run support services for students who wish to discuss fees, loans and payment related enquiries. For further information, please visit [**lse.ac.uk/ficc**](https://lse.ac.uk/ficc)

For full details regarding tuition fees, charging policy, payment and instalment options, visit [**info.lse.ac.uk/policies**](https://info.lse.ac.uk/policies)



Financial Support Office

The Financial Support Office is responsible for administering a variety of scholarships, bursaries and funds for enrolled students.

Please contact us to discuss your options if you anticipate or experience financial difficulties, or if you have any questions about your LSE funding.

lse.ac.uk/financialsupportcontact





Codes and Charters

LSE Academic Code

LSE's Academic Code sets out what we are doing to deliver a consistent student experience across our School, and clarifies what you can expect from an LSE education.

The Academic Code brings together key principles that underpin students' education into a School-wide policy. Developed in partnership with LSE Students' Union, it sets the baseline to build on in four key areas: teaching standards, academic support, assessment and feedback, and student voice – areas that students have told us matter the most to them.

[Read the Academic Code in full.](#)

The Student Charter

Our Student Charter, written by students and staff, sets out how LSE's mission and ethos are reflected in the education you can expect to receive at the School, and in the diverse, equitable and inclusive community that we all contribute to and value.

The charter covers:

- **Your education** – what an LSE education is and how you can make the most of it
- **Our community** – what it means to be part of the LSE community and how to contribute
- **Your future, our future** – how to inspire future generations of LSE students. Find out more about the charter and [read the full version](#) online.

Codes of Good Practice

The Codes of Good Practice explain the responsibilities and requirements of both staff and students.

They set out what you can expect from your department in relation to your teaching and learning experience. The codes cover areas like the roles and responsibilities of Academic Mentors and Departmental Tutors, the structure of teaching at LSE and exams and assessment. The codes also lay out your responsibilities as a member of our community. You can find the codes of practice in the [LSE calendar](#).



The Ethics Code

The Ethics Code details the principles by which the whole LSE community are expected to act.

We expect the highest possible ethical standards from all staff, students and governors. The Ethics Code sets out the School's commitment to the six ethics principles:

- **Responsibility and Accountability**
- **Integrity**
- **Intellectual Freedom**
- **Equality of Respect and Opportunity**
- **Collegiality**
- **Sustainability.**

Learn more about the [Ethics Code](#).

Research Ethics

If you conduct research, you'll need to follow the Research Ethics policy and procedures.

Find [resources, training and support on LSE research ethics](#). If you have any questions regarding research ethics or research conduct, please email research.ethics@lse.ac.uk

Systems and Online Resources

Need IT help?

- Visit the Tech Centre on the first floor of the library – Lionel Robbins building (LRB)
- Email: tech.support@lse.ac.uk
- Call: **020 7107 5000**

For further information and opening times please visit info.lse.ac.uk/current-students/dts

Student Hub 

Moodle 

LSE for You 

Reset your IT password 

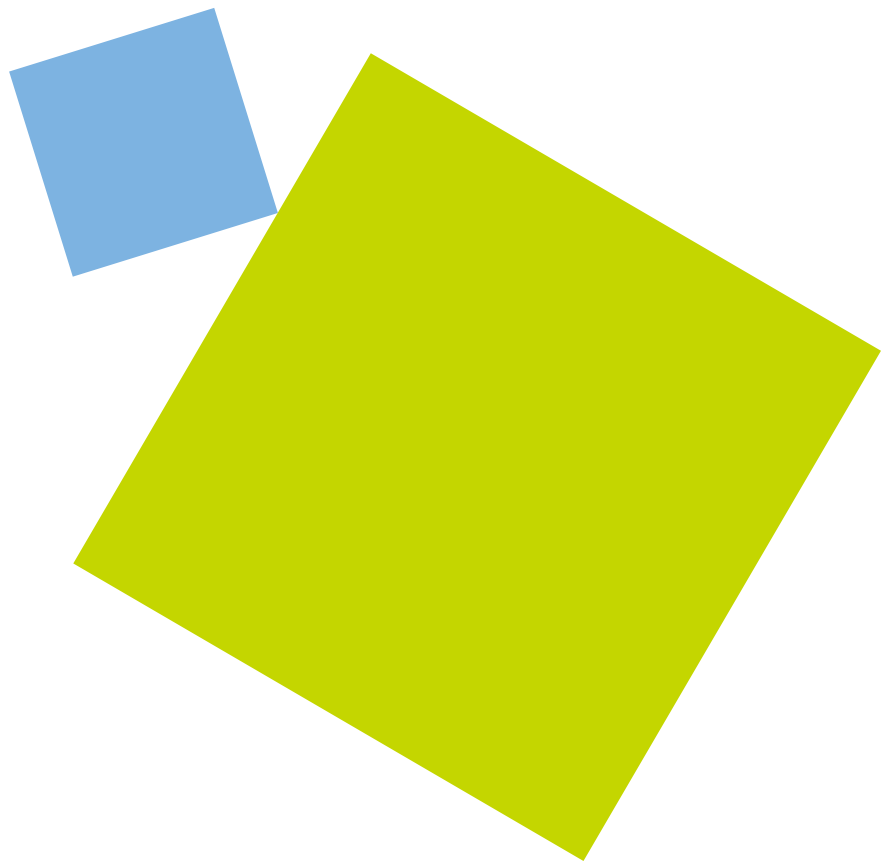
Multi-Factor Authentication (MFA) 

Email 

Microsoft Office 365 @ LSE 

Training and Development System 

Information security awareness training 



Student Hub

The Student Hub is LSE's app, designed to help you navigate your day-to-day life at LSE. With the Student Hub, you can:

- **View your timetable and upcoming deadlines**
- **Find your way around with the campus map**
- **Keep up to date with news and events from around LSE in your newsfeed**
- **Book appointments with academic staff (office hours) and some support services.**

Available on iOS and Android app stores or as a web app at studenthub.lse.ac.uk





Moodle

Moodle is LSE's virtual learning environment.

The majority of taught courses have a corresponding course on Moodle, the online learning platform used at LSE. Moodle courses contain essential resources such as lecture slides, lecture recordings and reading lists. Moodle also enables activities such as quizzes, discussion forums, and allows for online assignment submission, marking and feedback. How Moodle is used is determined by the course convenor and so this may vary from course to course. LSE also provides a Moodle Archive service which provides teachers and students with read-only access to previous year's courses.

You can access Moodle by visiting moodle.lse.ac.uk

LSE for You

LSE for You is a web portal which gives you access to a range of services. As part of ongoing development work, some of these services have been moved onto a new platform.

In [Student LSE for You](#) you can:

- View and update your term time (contact) and home (permanent) address
- Access your candidate number
- View your teaching timetable.

To select your courses, please use course selection in [LSE for You](#).

Reset your IT password

You can reset your own IT password at the [LSE Password website](#).

Multi-Factor Authentication (MFA)

MFA provides an extra layer of security on top of your username and password when you access our resources online – providing increased protection against cyber attacks.

Once set up, it is easy to use and manage via lse.ac.uk/mfa



Email

LSE will use your LSE email address to communicate with you, so check it regularly.

Microsoft Outlook is available on all public PCs. You can also access your email off-campus using webmail (mail.lse.ac.uk) or on the move via the outlook app. For help setting up email on your device search “LSE mobile email setup”.

Microsoft Office 365 @ LSE

All our students are eligible for a free copy of Microsoft Office 365 on their personal computers and devices.

Microsoft Office 365

Training and Development System

The Training and Development System allows you to book a place on many of the personal development opportunities offered around LSE.

You can access the Training and Development System at apps.lse.ac.uk/training-system

Log in using your LSE username and password.

Information security awareness training

The LSE Cyber Security Awareness Training can be self-enrolled at [**Course: LSE Cyber Security Awareness Training**](#). We strongly advise you to complete the training which equips you with the skills to spot phishing emails, keep your data and devices safe, and protect your privacy.

More tips are available at lse.ac.uk/cyber



LSE Campus



Key

61A 61 Aldwych	FAW Fawcett House	49L 49 Lincoln's Inn Fields (Coopers)	OLD Old Building	SAR Sardinia House
CBG Centre Building	KGS King's Chambers	50L 50 Lincoln's Inn Fields	OCS Old Curiosity Shop	SAW Saw Swee Hock Student Centre
CKK Cheng Kin Ku Building	KSW 20 Kingsway	51L 51 Lincoln's Inn Fields	PAN Pankhurst House	SHF Sheffield Street
CLM Clement House	LAK Lakatos Building	LRB Lionel Robbins Building, Library	PAR Parish Hall	SAL Sir Arthur Lewis Building
COL Columbia House	LCH Lincoln Chambers	MAR Marshall Building	PEA Peacock Theatre	STC St Clement's, Clare Market
CON Connaught House	5LF 5 Lincoln's Inn Fields		PEL Pethick-Lawrence House	
COW Cowdray House	35L 35 Lincoln's Inn Fields		POR 1 Portsmouth Street	



All buildings have wheelchair access and lifts, except, KGS, KSW*, POR* and SHF.
 *KSW 20 Kingsway (Language Centre only), *POR 1 Portsmouth Street (Shop only).

Disabled Access

After 6.30pm, please call Security Control on 020 7955 6200 to ensure that any disabled access doors are open. Also see: [Accessibility map \[PDF\]](#) For access to 20 Kingsway, please call security staff on 020 7955 6200 to set up the portable ramp in the entrance foyer.

Access Guides to LSE buildings

AccessAble have produced detailed access guides to the LSE campus and residences, and route maps between key locations. These access guides, and route maps, are now [available online](#).

lse.ac.uk/gender



Department of Gender Studies
The London School of Economics
and Political Science
Houghton Street
London WC2A 2AE

E: gender@lse.ac.uk

T: +44 (0)20 7955 7602

The London School of Economics and Political Science is a School of the University of London. It is a charity and is incorporated in England as a company limited by guarantee under the Companies Acts (Reg no 70527).

The School seeks to ensure that people are treated equitably, regardless of age, disability, race, nationality, ethnic or national origin, gender, religion, sexual orientation or personal circumstances.

Design: LSE Design Unit (info.lse.ac.uk/staff/divisions/communications-division/design-unit)

Photography: cover image from Unsplash, Pexels or iStock.

Internal photography: Nigel Stead, and Maria Moore.