



The Royal Society
of Literature

BRANCHING OUT

Tuesday 26 February –
Saturday 2 March 2013



NewStatesman

Royal Society of Literature LSE Literary Festival event

Sarah Losh of Wreay: architect, antiquarian and visionary

Jenny Uglow

Award-winning biographer, books including The Pinecone

Hermione Lee

Chair

Writer, reviewer and broadcaster



LSE events

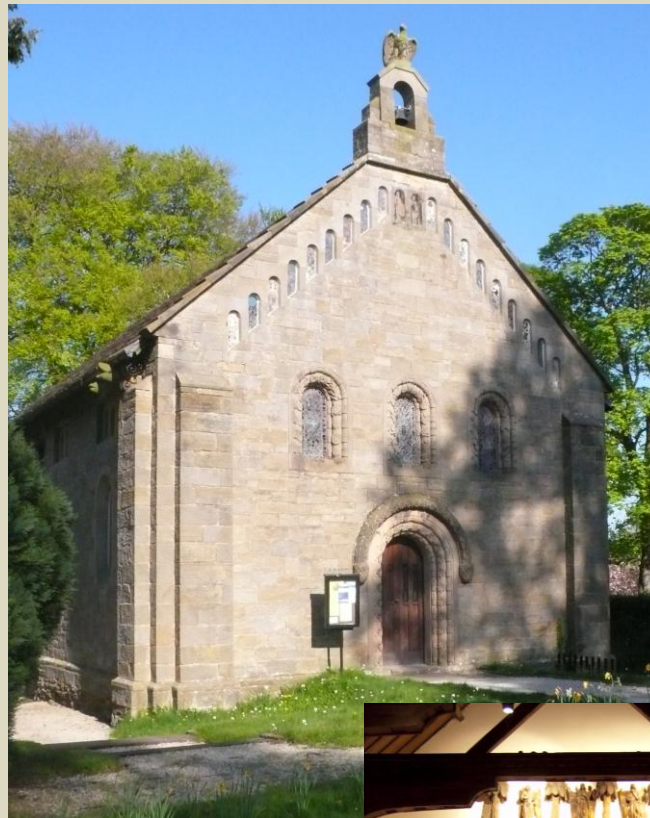
Twitter hashtag: #LSElitfest



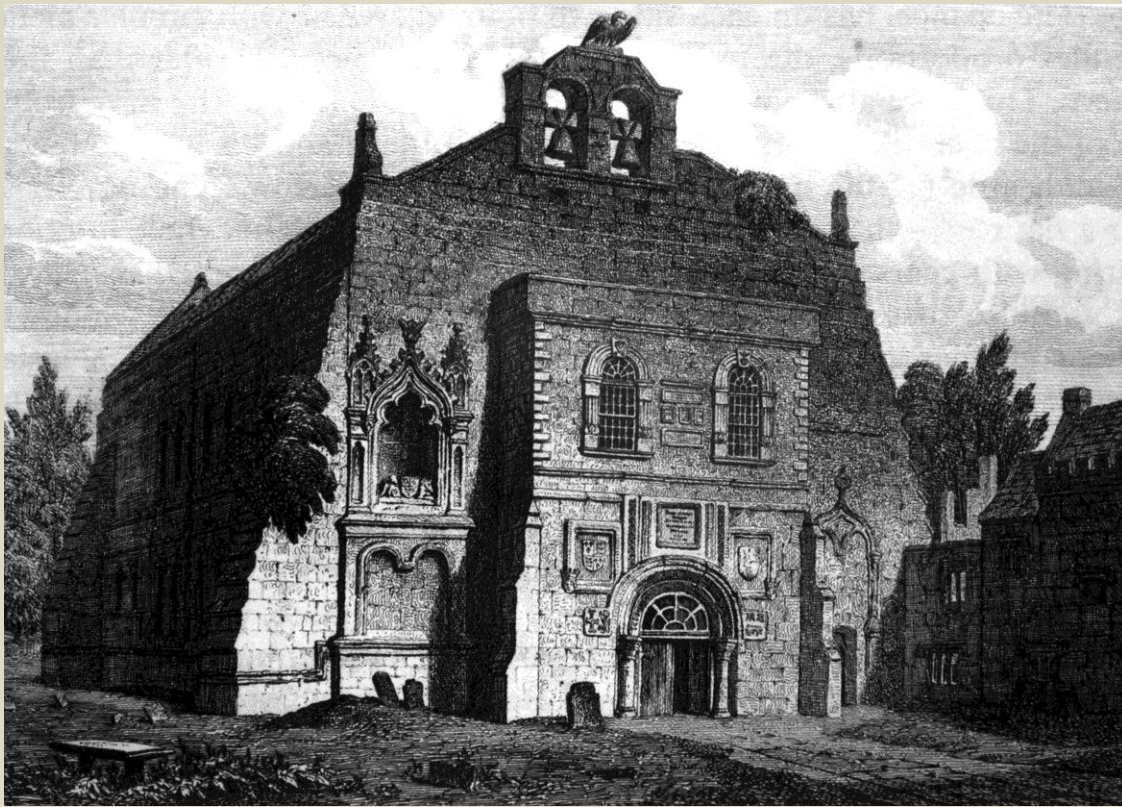


Sarah Losh – architect, antiquarian and visionary

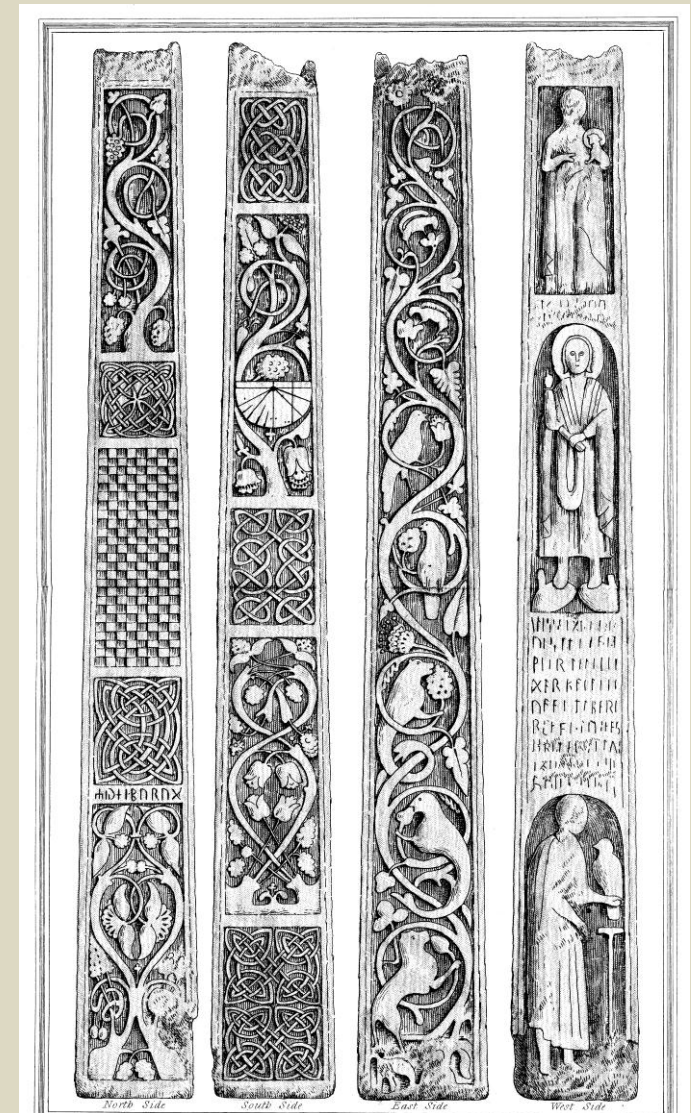
Space for Thought, 1 March 2013

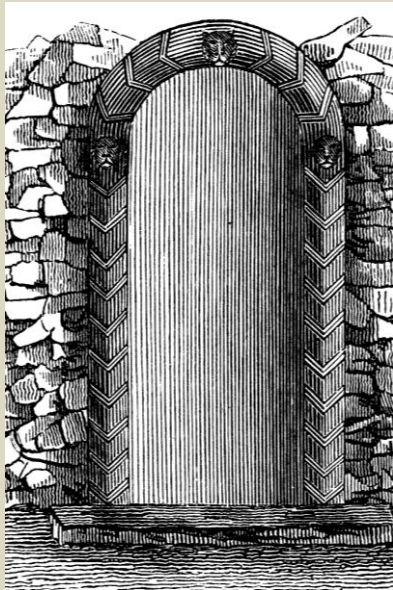
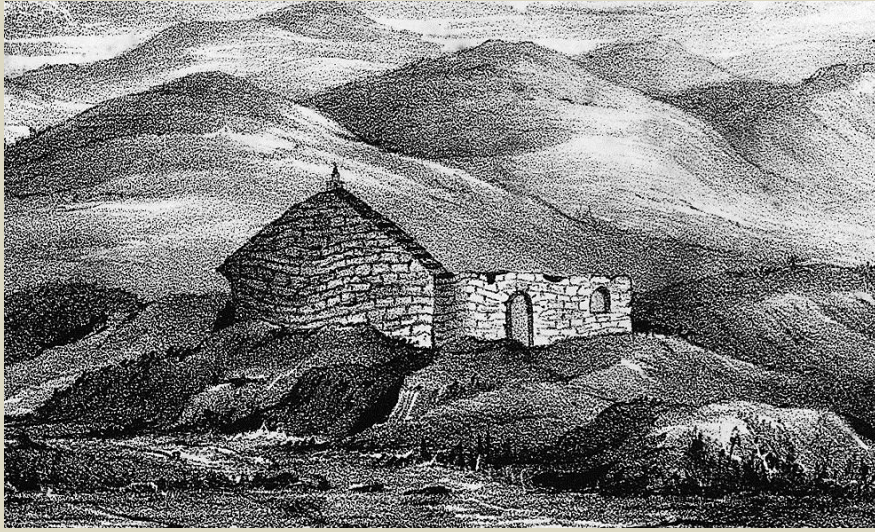


Sarah Losh
and the church at Wreay, Cumbria, 1842

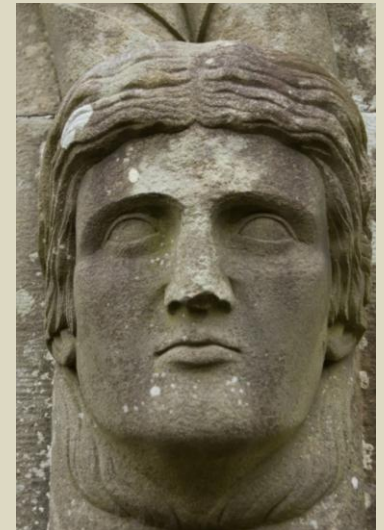


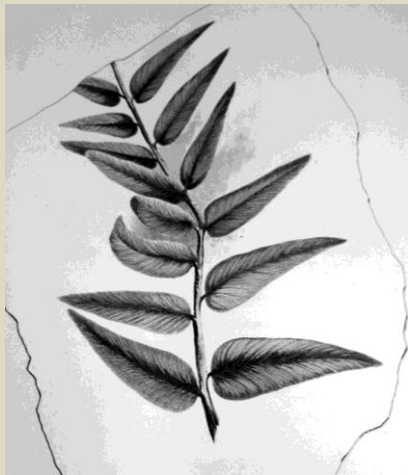
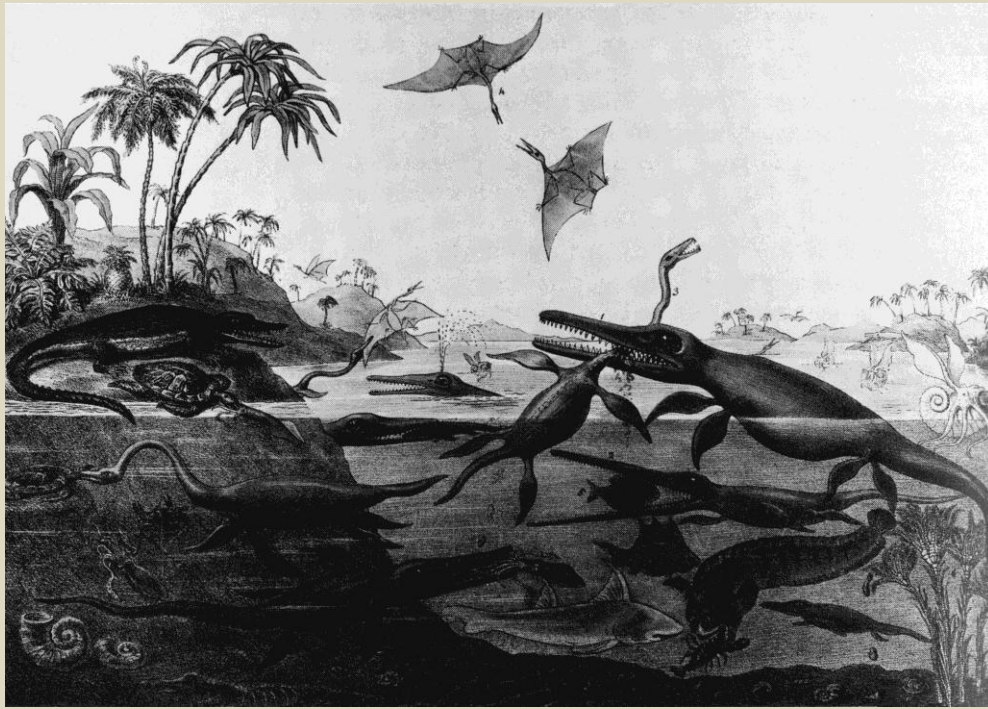
Holm Cultram Abbey,
the carvings at Bridekirk
and the cross at Bewcastle





The church in the dunes
at Perranzabuloe,
Cornwall,
and the mortuary chapel
at Wreay



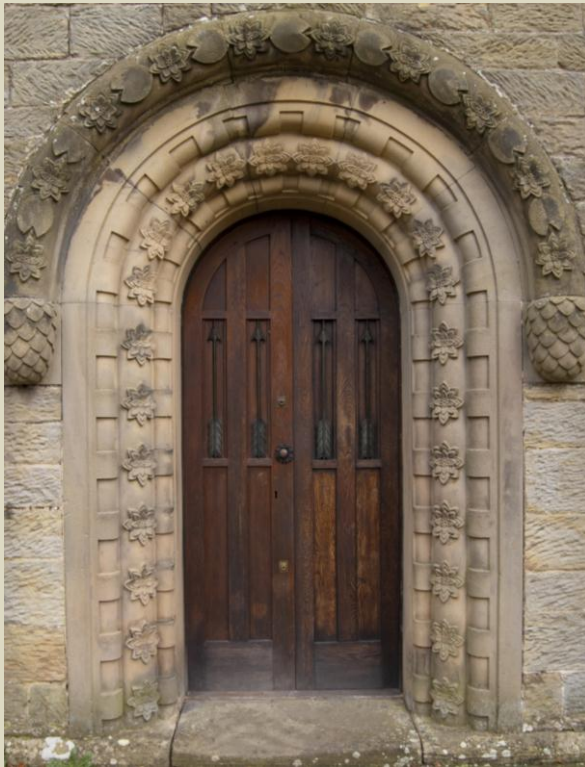


The great dinosaurs,
Henry de la Beche, 1830,

Lindley's *Fossil Flora*

and the winged turtle gargoyle
and alabaster windows at
Wreay





The windows on the façade
– sea, earth and sky

The west door – pinecones and
lotus flowers and leaves



The mystery of the natural



The Royal Society
of Literature

BRANCHING OUT

Tuesday 26 February –
Saturday 2 March 2013



NewStatesman

Royal Society of Literature LSE Literary Festival event

Sarah Losh of Wreay: architect, antiquarian and visionary

Jenny Uglow

Award-winning biographer, books including The Pinecone

Hermione Lee

Chair

Writer, reviewer and broadcaster



LSE events

Twitter hashtag: #LSElitfest

