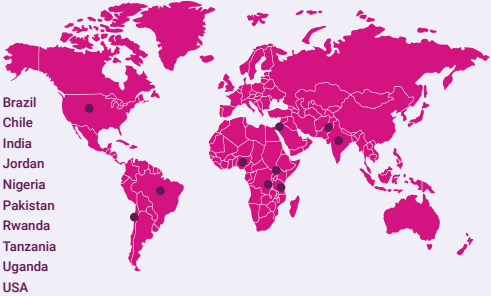


SCALING SOCIAL INNOVATION AT LSE

Where we work

Social ventures are based in 10 countries but operating across the globe.



The world faces multiple complex and systemic challenges, from poverty and inequality to environmental degradation and health crises. Bold, impact-focused organisations are championing innovative solutions to address these problems, but very few (if any) are at the scale needed.

At 100x, we believe that rapidly scaling social innovation is not just possible but essential. We exist to answer a simple yet profound question: what does it take to scale the impact of social innovations so they can reach hundreds of millions of people?

- 19 Social ventures supported since 2023
- 35m Lives impacted by our portfolio ventures
- £3m Funding dedicated so far to scaling these ventures



Our work sits at the intersection of evidence-based research and entrepreneurship. Being powered by LSE means we can uniquely combine academic rigour and bold, practical action to achieve impact at scale. This positions us as a model for how the best financial, intellectual and network support can drive systemic change.



SCAN TO HEAR MORE FROM 100x ABOUT THEIR WORK

OneDay Health, Uganda

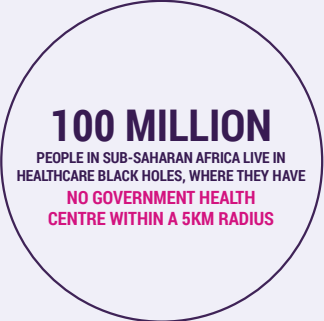


OneDay Health is a social enterprise revolutionising healthcare access in rural Uganda by establishing low-cost, high-quality micro-health centres in remote communities.



“We are uncovering how beliefs influence healthcare demand and how we can design smarter, evidence-based interventions to improve access, trust, and uptake of life-saving services.”

Marta Grabowska, PhD candidate and LSE researcher with OneDay Health



100x funded research partnership with OneDay Health

100x funded a research partnership to examine the quality of and demand for care in rural Uganda.

LSE researchers Marta Grabowska and Dr Mylene Lagarde are conducting a Randomised Control Trial (RCT) with OneDay Health to shape policies improving healthcare delivery in Uganda and other low- and middle-income countries.

Marta's research explores if false beliefs about disease and medicine lead to poor health choices, and what kinds of health education might improve, e.g. vaccine uptake.

OneDay Health impact

- 49 OneDay Health centres launched
- 317k Patients treated
- £500k Saved in transport costs



LSE research will...

- Generate critical evidence on healthcare quality by comparing cost and quality of care provided by OneDay Health clinics, informal drug shops, and public health centres.
- Provide insights into gender biases in healthcare delivery, helping to inform policies that ensure women receive equal and effective treatment.
- Evaluate how different communication strategies influence patient decisions, helping to design more effective public health campaigns.

“Partnering with LSE researchers allows us to rigorously evaluate and strengthen our model, ensuring that we provide the highest quality, most effective care possible.”

Dr Nicholas Laing, Co-founder, OneDay Health

Some of the other social ventures supported by 100x

Intelehealth, India

Delivering quality healthcare where there is no doctor

Intelehealth leverages open-source technology for governments, NGOs and hospitals to seamlessly connect hard-to-reach populations with high-quality primary healthcare.

OVER 50% OF THE WORLD'S POPULATION LACKS ACCESS TO RELIABLE HEALTHCARE ESPECIALLY WOMEN IN RURAL COMMUNITIES

- 8.8m+ Teleconsultations conducted
- 15k Health workers supported
- 9k Doctors supported



“We started Intelehealth to challenge the gender norms that limit women's access to healthcare. By leveraging telemedicine technology, we connect rural frontline health workers with urban doctors to bring quality care closer to those who need it most.”

ImpulsoGov, Brazil

Turning health data into healthcare

ImpulsoGov leverages the smart use of data to transform the Brazilian public health system. They have directly supported over 150 Brazilian municipalities across more than 20 states, and they plan to reach around 90 million citizens by 2027.

- 50k+ Chronic disease patients receiving regular check ups year-on-year
- 138% Increase in cervical cancer screenings over 30 days through direct messaging feature
- 50% Reduction in depression symptoms in two major cities



BRAZIL'S PUBLIC HEALTHCARE SYSTEM IS THE LARGEST GLOBALLY SERVING 214 MILLION PEOPLE

57,000 PREVENTABLE DEATHS OCCUR ANNUALLY DUE TO GAPS IN THE CARE SYSTEM

“Ventures like ImpulsoGov turn health data into healthcare, using technology to make prevention scalable and ensure that every patient, no matter where they live, gets the care they need before it's too late.”

Wysa, India

The world's leading therapeutic AI for better mental health

Wysa is an AI-powered chatbot providing high-quality, 24x7, 100% anonymous mental health support to anyone, anywhere in the world.

Their therapeutic AI has guided more than 750 million conversations, proven to form a therapeutic alliance 3x faster than human therapists, and established the largest evidence base with 40+ peer-reviewed publications, delivering care that's both personal and impactful.

40% OF EMPLOYEES SUFFER FROM SYMPTOMS OF DEPRESSION OR ANXIETY Wysa "All Worked Up Report" 2022

MORE THAN 720,000 PEOPLE DIE DUE TO SUICIDE EVERY YEAR WHO

- 6.5m Users across 95 countries
- 92% Helpfulness reported by users
- 500 Lives saved from suicide



“Wysa was born of the need to do work that is relevant irrespective of its success or failure. A life spent trying to solve mental health for everyone felt worthwhile even if it failed, and gave me purpose.”