



THE LONDON SCHOOL
OF ECONOMICS AND
POLITICAL SCIENCE ■

Introduction to LSE Careers 25 September

**Please sign in by
scanning the QR code**





THE LONDON SCHOOL
OF ECONOMICS AND
POLITICAL SCIENCE

Introduction to LSE Careers

Department of International History
September 2025

Edmund Lewis, Careers Consultant,
LSE Careers





THE LONDON SCHOOL
OF ECONOMICS AND
POLITICAL SCIENCE ■

Today we will cover...

- How LSE Careers can support you
- Overview of LSE Careers events and resources
- Where are International History alumni now?
- Q&A





THE LONDON SCHOOL
OF ECONOMICS AND
POLITICAL SCIENCE ■

LSE Careers is here to help you **develop your career**. We can support you from the **early stages** when you are working out what you want to do right through to when you are **submitting applications** and attending **interviews**.



lse.ac.uk/careers



THE LONDON SCHOOL
OF ECONOMICS AND
POLITICAL SCIENCE ■

1:1 careers appointments

- Career guidance and advice
- CV, cover letter, applications
- Practice interviews
- Disabled, race equity, LGBTQ+, women and social mobility

Opportunities

- Work-based learning
- Jobs, internships and volunteer vacancies board
- Part-time work support
- Employer recruitment and networking events

Resources

- Website resources including employment sector pages
- LSE Careers blog and Moodle
- Social media content
- Careers email newsletter



Departmental careers support

- Linked careers consultant
- Alumni networking
- Tailored seminars and workshops

Careers events

- Careers fairs
- Alumni panels and networking
- Skills seminars
- Mock assessment centres
- Employer presentations
- Sector and region-specific programmes
- EDI focused events and support

lse.ac.uk/careers

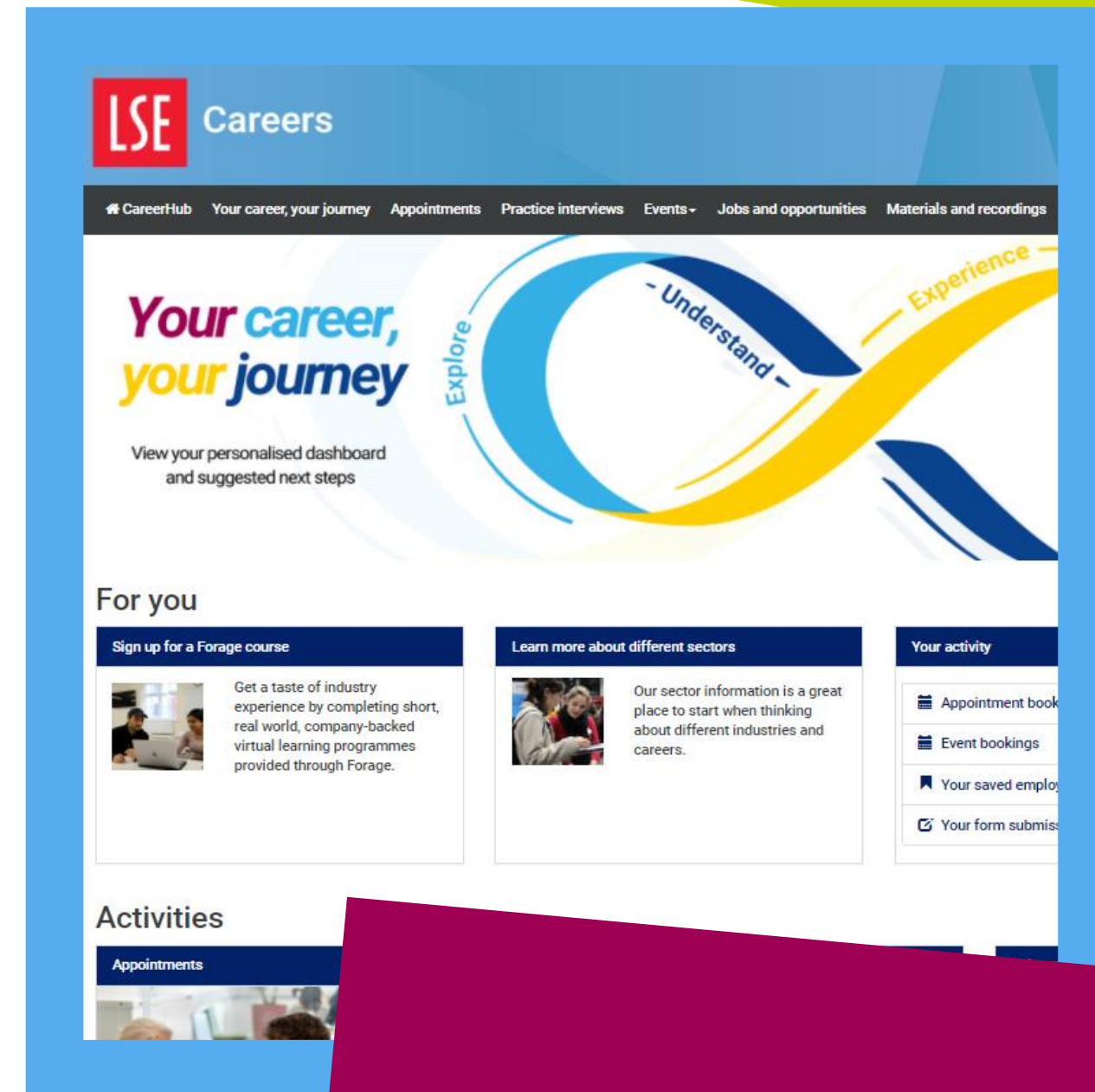


THE LONDON SCHOOL
OF ECONOMICS AND
POLITICAL SCIENCE ■

CareerHub

On CareerHub, you can:

- Access a jobs board featuring part-time, graduate and internship opportunities (at peak time, more than 1,000 vacancies)
- Browse and book onto events
- Book a careers appointment or practice interview



Visit careers.lse.ac.uk

What is the Career Development Cycle?

Understand

- What do you really enjoy doing?
- What do you value in a career?
- What skills do I have?
- Self-reflection on your career aims

Explore

- Chat with alumni about their jobs
- Meet with employers
- Research different careers
- Consider new and growth areas



Experience

- Work experience
- Volunteer
- Roles in societies and projects
- Develop professional skills

Implement

- Get feedback on your CV
- Prepare your career narrative for cover letters
- Take a practice interview
- Practice psychometric tests



THE LONDON SCHOOL
OF ECONOMICS AND
POLITICAL SCIENCE ■



Understand

lse.ac.uk/careers



THE LONDON SCHOOL
OF ECONOMICS AND
POLITICAL SCIENCE ■



What do you enjoy doing?
What do you value?
What energises you?



THE LONDON SCHOOL
OF ECONOMICS AND
POLITICAL SCIENCE ■



LSE Careers
webpage
'Understand'
section

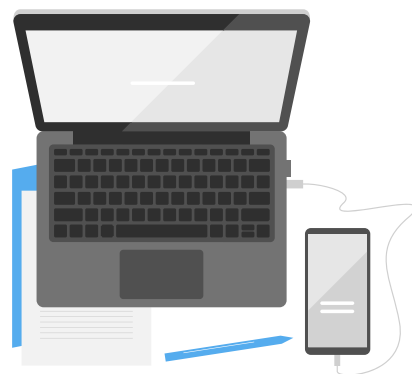


LSE Careers
blog to
explore your
values



PROSPECTS

Prospects
Career
planner tool



lse.ac.uk/careers



THE LONDON SCHOOL
OF ECONOMICS AND
POLITICAL SCIENCE ■

Explore

- Chat with alumni about their jobs
- Network on LinkedIn
- Recruitment Fairs







THE LONDON SCHOOL
OF ECONOMICS AND
POLITICAL SCIENCE


LinkedIn Alumni Search Tool





The London School of Economics and Political Science (LSE)

We're a world-leading university, unique in our dedication to the social sciences.
Higher Education · London · 717,382 followers

 Shaun & 29 other connections work here · 6,529 employees

[✓ Following](#) [Invite](#) [More](#)

[Home](#) [My Employer](#) [About](#) [Posts](#) [Jobs](#) [Life](#) [Alumni](#) [Events](#)

273,101 alumni

lse.ac.uk/careers



THE LONDON SCHOOL
OF ECONOMICS AND
POLITICAL SCIENCE ■



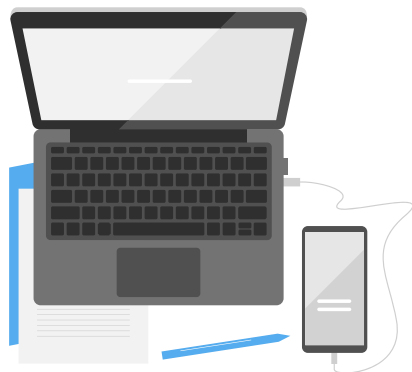
LSE Careers
webpage
'Explore'
section



LSE Careers
webpage
**'Employment
sector'** guides



**Get answers to
your question
using Ask an
Alum**



lse.ac.uk/careers



THE LONDON SCHOOL
OF ECONOMICS AND
POLITICAL SCIENCE ■



Experience

- Work experience
- Volunteer
- Get involved in running a society



Undergraduates: What experience do you currently have?

Have you:

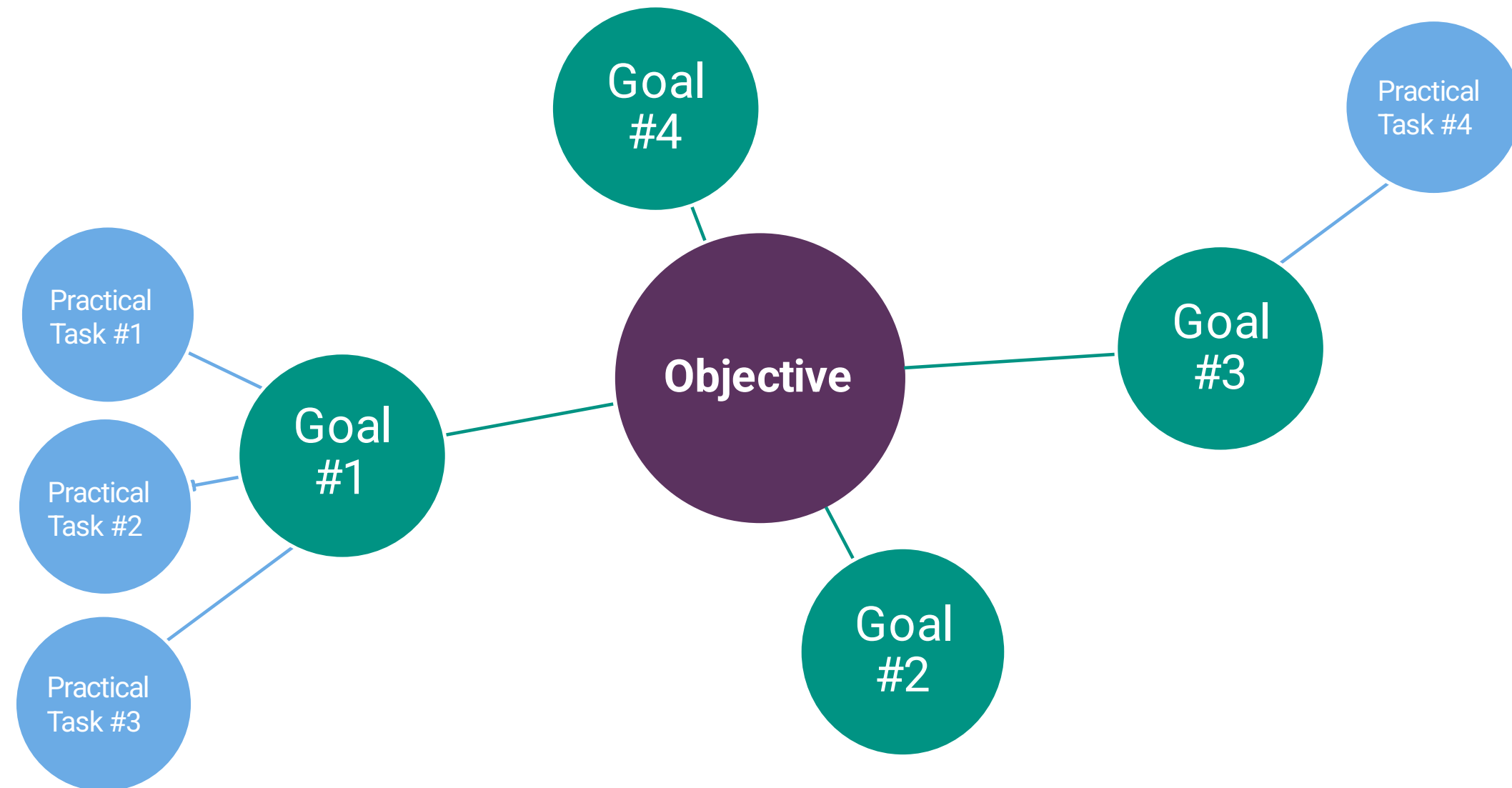
- Had a part-time job?
- Spent time volunteering?
- Completed an internship?
- What did you enjoy / not enjoy about these experiences?



Postgraduates: Leveraging your experience and skills

- Making the most of your network
- Are you seeking a promotion at work? Changing careers?
- Evidencing successes and impact (your 'value add')

Develop a career strategy





THE LONDON SCHOOL
OF ECONOMICS AND
POLITICAL SCIENCE ■



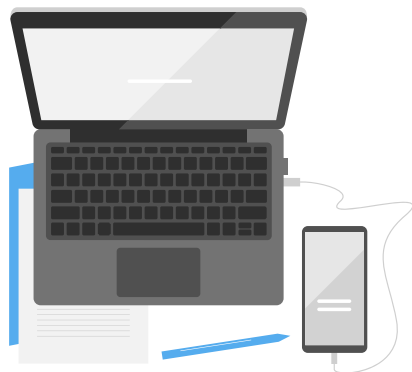
LSE Careers
webpage
'Experience'
section



LSE Careers
webpage
'Jobs & opportunities'



LSE
Volunteer
Centre



lse.ac.uk/careers



THE LONDON SCHOOL
OF ECONOMICS AND
POLITICAL SCIENCE ■



Implement

- Get feedback on your CV
- Have a practice interview
- Practice online psychometric tests



THE LONDON SCHOOL
OF ECONOMICS AND
POLITICAL SCIENCE ■



CareerSet

**Get your CV
reviewed
with
CareerSet**

Shortlist
Me

**Practice
interviews with
Shortlist.me**

CASECOACH

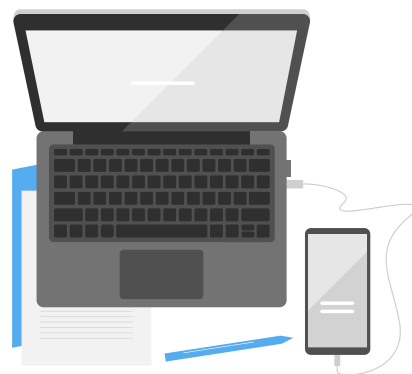
**Prepare for
case
interviews
with
CaseCoach**

STUDENT
CIRCUS

**Support for
international
students with
Student Circus**

GF Job Assessment
Experts

**Practise
psychometric
tests with
Graduates First**



lse.ac.uk/careers

Graduate recruitment programmes: some timelines

	July/Aug September	October	November	December	January
IB/Finance	Deadlines published, receive applications but recruit on an ongoing basis (online tests, video interviews, interviews)		Assessment centres and offers		
Consultancy including Management and Strategy		UK Applications (some deadlines are at the end of October)		Interviews, including case studies	
International Organisations (including Central/Development Banks)	<ul style="list-style-type: none">• Some early deadlines for international organisations, few or none for NGOs• Few structured programmes so be proactive in finding roles• Relevant experience is important				

NOTE: Recruitment deadlines vary due to location and external factors

Women in Banking. **Civil Service Fast Stream.** **Law.** **Careers in Sustainability.** **Banking Fair.** **Charity & not-for-profit.** **How to write effective CVs.** **Career narrative.** **Consultancy Fair.** **Careers in the US and Canada.** **Careers in Creative Industries.** **Mock assessment centre.** **Political Risk, Conflict & Security Week.** **Meet our Alum.** **Mock Interviews.** **Discover International Development.** **Careers in Data and Tech.** **Careers with Economics.** **Think Tank panel.** **Consultancy Case Study.** **Careers in China.** **Breaking Down Barriers.** **Brussels Careers Programme.** **Career Changers.**



Which sectors are LSE graduates working in?

EMPLOYMENT SECTORS, 5 YEAR AGGREGATE

Level of Study

(All)

Student Department

International History

Programme Name

(All)

Hover over or tap smaller tiles to see employment sectors.

Education, Teaching and Research

Government, Public Sector and Policy

Advertising, Marketing, PR, Media, Entertainment, Publishing and Journalism

Consultancy

FMCG, Manufacturing and Retail

Information, Digital Technology and Data

Accounting and Auditing

Employment sectors

lse.ac.uk/careers

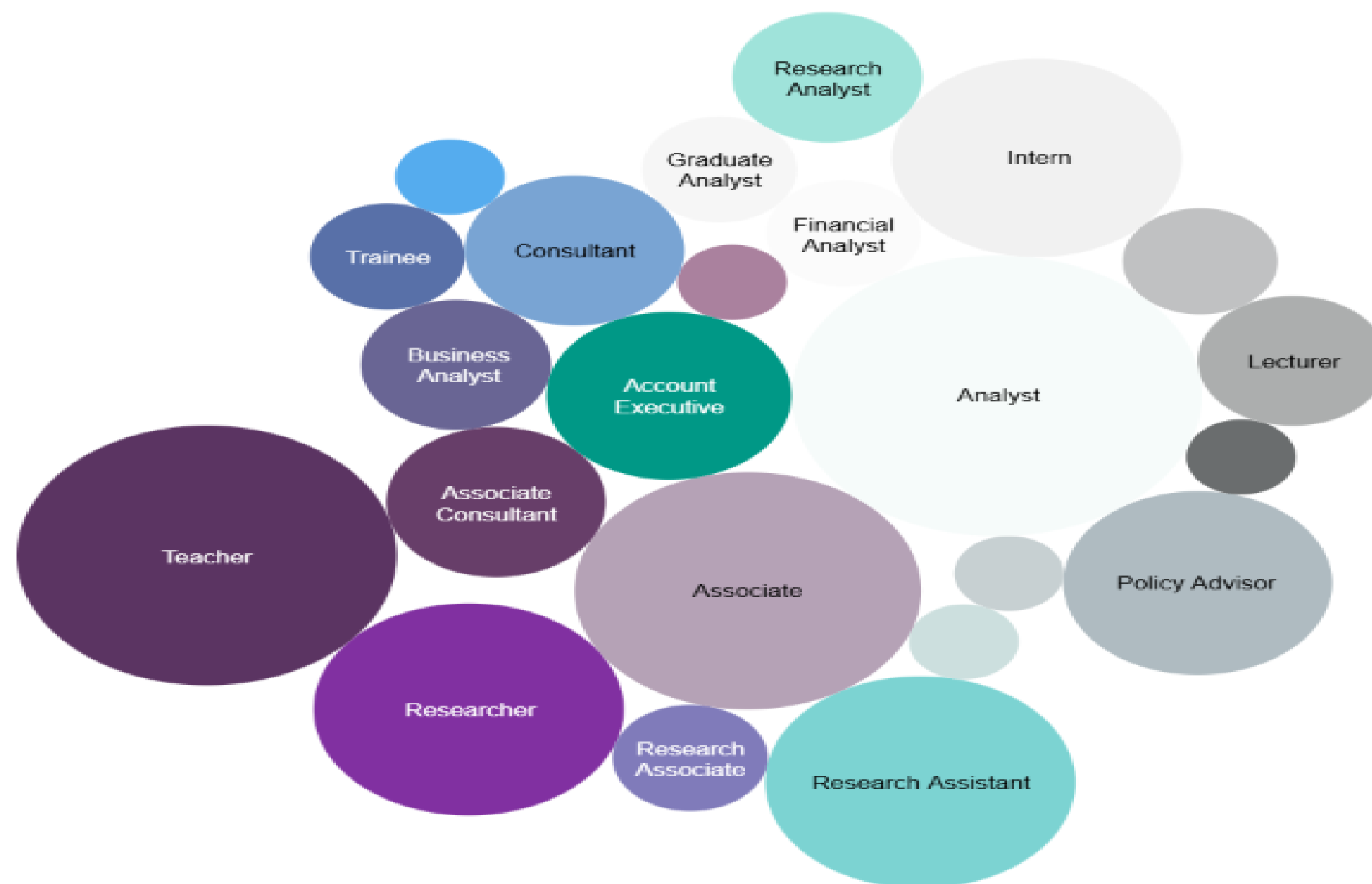


What types of job roles are LSE graduates undertaking?

JOB TITLES, 5 YEAR AGGREGATE

Level of Study	Student Department	Programme Name
(All) ▼	International History ▼	(All) ▼

Hover over or tap smaller circles to see job title.



Job titles



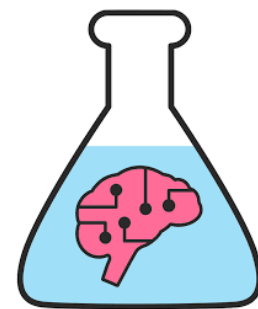
THE LONDON SCHOOL
OF ECONOMICS AND
POLITICAL SCIENCE

Unsure of what to do? Consider a range of sectors

:vivid**economics**

Johnson+Johnson

amazon



Wallbrook.



Linklaters

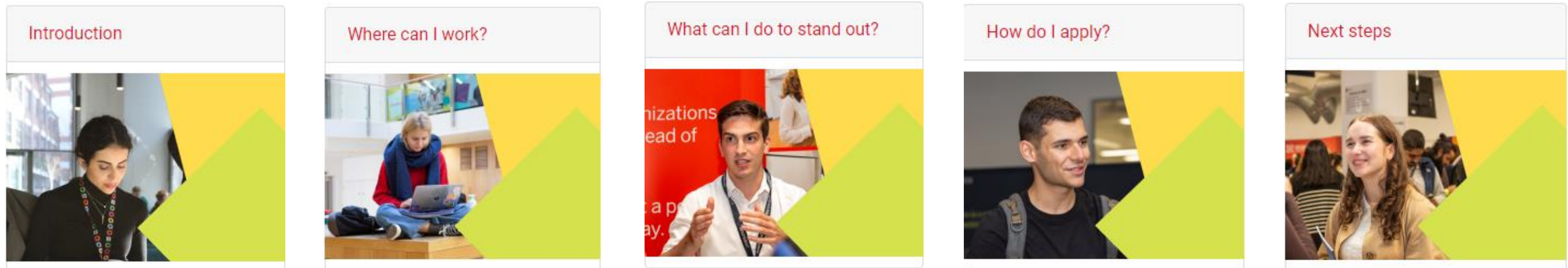




THE LONDON SCHOOL
OF ECONOMICS AND
POLITICAL SCIENCE ■

STEP into LSE Careers

An online careers course for Master's students
Supporting you to Think, Explore, and Plan for your career



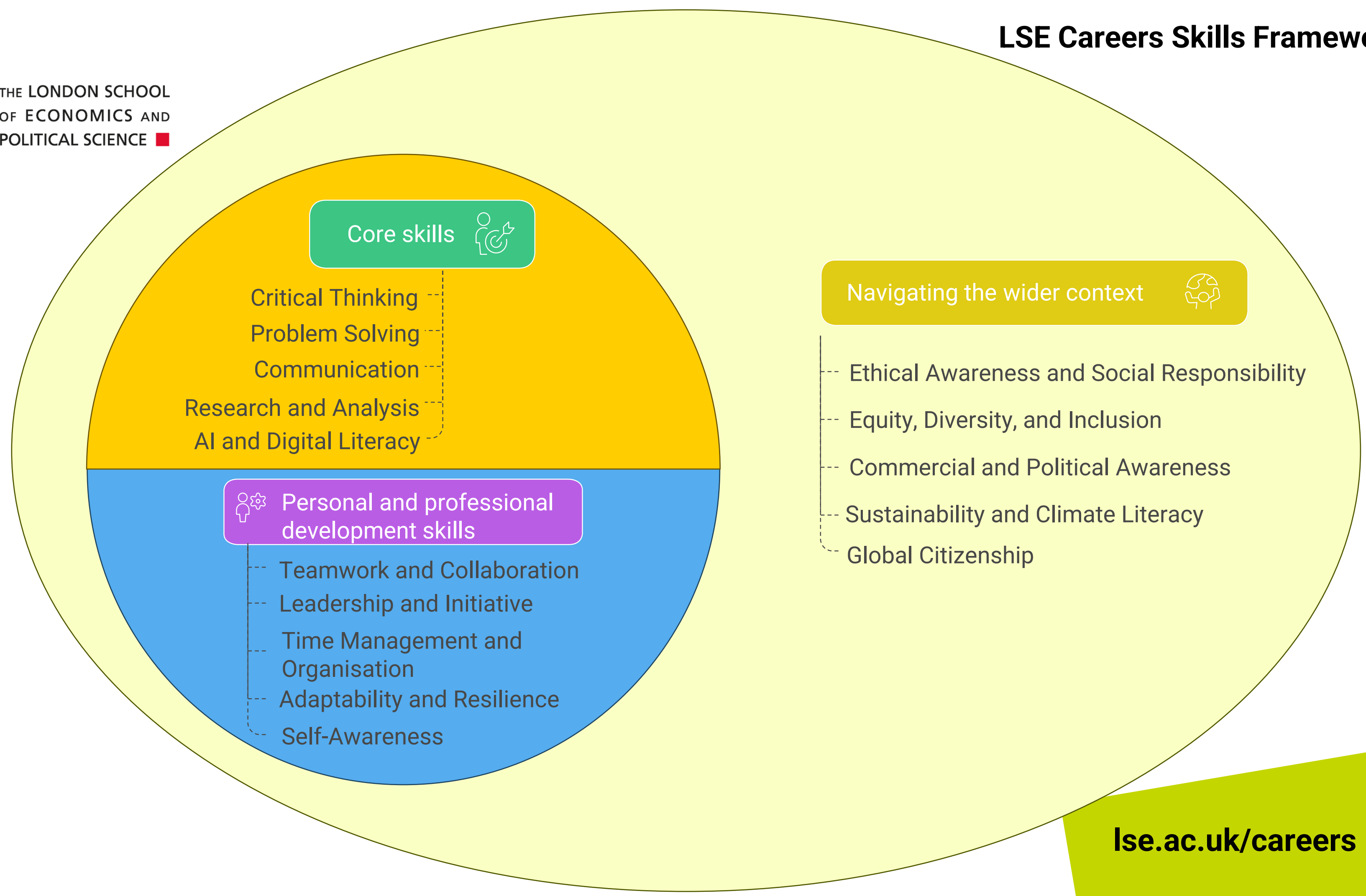
Access the course via Moodle at
<https://moodle.lse.ac.uk/course/view.php?id=9235>

lse.ac.uk/careers



THE LONDON SCHOOL
OF ECONOMICS AND
POLITICAL SCIENCE

LSE Careers Skills Framework



lse.ac.uk/careers



THE LONDON SCHOOL
OF ECONOMICS AND
POLITICAL SCIENCE

Enhance your career prospects

Prepare to transition into work or further study by developing your personal and professional skills, alongside knowledge and behaviours so you can build and maintain fulfilling lives and future careers.

◀ [Back to homepage](#)

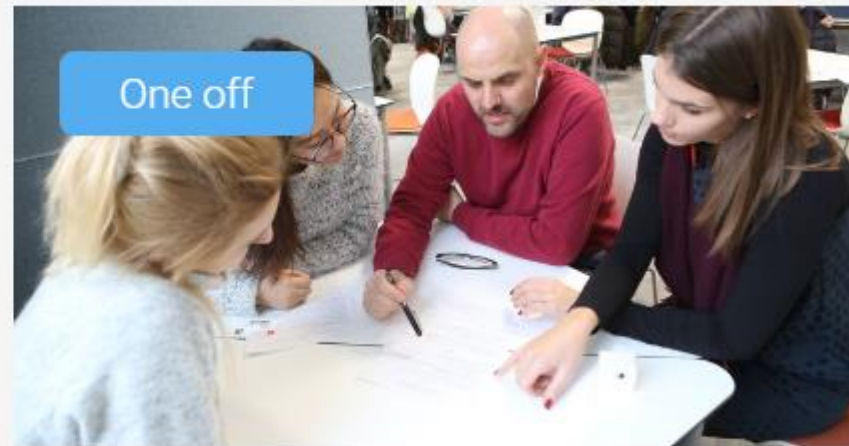
Find an opportunity

🔍

Filters

Skills and attributes ▼

Who can take part ▼



One off

✓ Spotlight opportunity

LSE Careers Events: attend skills seminars and workshops

[Read more..](#) ▼

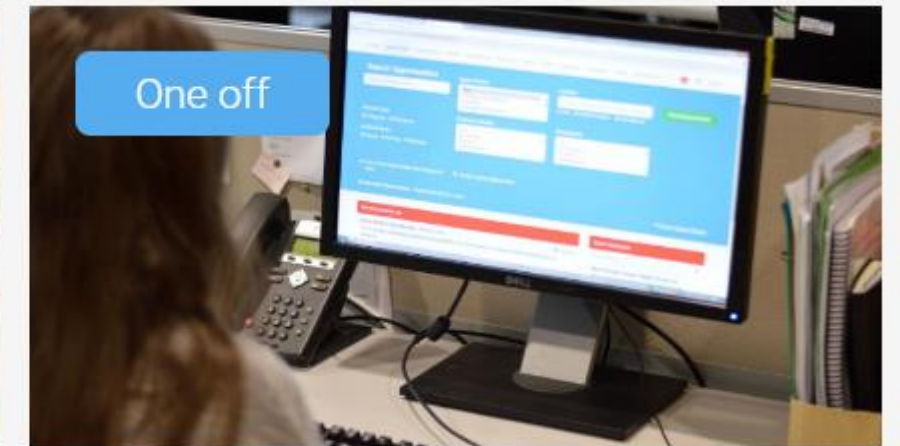


Ongoing

✓ Spotlight opportunity

Generate Accelerator Programme (GAP): apply for the programme

[Read more..](#) ▼



One off

✓ Spotlight opportunity

Online tools and resources: find careers information

[Read more..](#) ▼



One off



Ongoing



One off

lse.ac.uk/careers

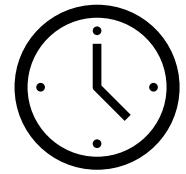
Making job applications



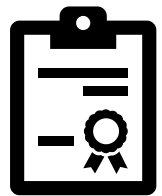
THE LONDON SCHOOL
OF ECONOMICS AND
POLITICAL SCIENCE ■



Talk to people: **Attend, connect & engage**



Build up knowledge **over time**



Quality over quantity



Integrate your academic learning into the application process



Take care of your **wellbeing**



Use the **careers service!**

lse.ac.uk/careers

AI

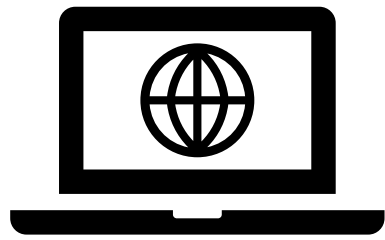
- Use it as a tool to support you but not to replace your own judgement and creativity
- Carefully proofread for accuracy and honesty and critically evaluate the content and validate it with trusted sources
- Over reliance on AI tools can lead to a lack of authenticity and be picked up by employers





THE LONDON SCHOOL
OF ECONOMICS AND
POLITICAL SCIENCE ■

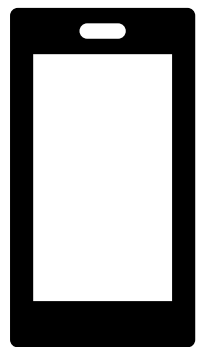
Keep in touch with us!



[Lse.ac.uk/careers](https://lse.ac.uk/careers)



Blog: blogs.lse.ac.uk/careers/



Social media: [@lsecareers](https://twitter.com/lsecareers)

lse.ac.uk/careers



THE LONDON SCHOOL
OF ECONOMICS AND
POLITICAL SCIENCE ■



Any questions?

lse.ac.uk/careers



THE LONDON SCHOOL
OF ECONOMICS AND
POLITICAL SCIENCE ■

Core Skills

- **Critical Thinking:** Analyse information objectively, identify assumptions, evaluate arguments, and form reasoned judgments.
- **Problem Solving:** Define problems, generate and assess solutions, and implement effective strategies.
- **Communication:** Express ideas clearly and persuasively in writing, speech and presentation; adapt style to different audiences, and actively listen.
- **Research and Analysis:** Locate, evaluate, and synthesise information from diverse sources; interpret data and apply analytical methods to support arguments, solve problems, and make informed decisions
- **AI and Digital Literacy:** Understand the principles and applications of artificial intelligence; use AI tools responsibly and effectively for research, analysis, and communication.



THE LONDON SCHOOL
OF ECONOMICS AND
POLITICAL SCIENCE ■

Professional Skills

- **Teamwork and Collaboration:** Work effectively with others, contribute to shared goals, and manage conflict constructively.
- **Leadership and Initiative:** Take ownership, motivate others, negotiate, and lead projects with confidence and integrity.
- **Time Management and Organisation:** Prioritise tasks, manage time efficiently, and meet academic and professional deadlines.
- **Adaptability, Grit and Resilience:** Embrace change, learn from setbacks, and maintain a positive, forward-looking mindset.
- **Self-Awareness:** Understand your strengths, values, and motivations; demonstrate emotional intelligence and reflective thinking.



THE LONDON SCHOOL
OF ECONOMICS AND
POLITICAL SCIENCE ■

Awareness of the wider context

- **Ethical Awareness and Social Responsibility:** Understand ethical principles, act with integrity, and consider the impact of decisions.
- **Equity, Diversity, and Inclusion:** Recognise, respect, and value differences; promote inclusive practices and challenge bias.
- **Commercial and Political Awareness:** Understand how businesses, markets, and political systems operate; stay informed about current affairs and global trends.
- **Sustainability and Climate Literacy:** Understand sustainability and the role of individuals and organisations in addressing climate challenges.
- **Global Citizenship:** Engage with diverse cultures and perspectives; contribute to local and global communities and debates with empathy and responsibility.