



THE LONDON SCHOOL
OF ECONOMICS AND
POLITICAL SCIENCE ■

April to
June 2023

EVENT STENARD

EVENTS OPEN
TO THE LSE
COMMUNITY
AND THE PUBLIC

LSE EVENTS



Dr Ngozi Okonjo Iweala,
Director General of the World
Trade Organization, spoke at
LSE in February 2023.



THE LONDON SCHOOL
OF ECONOMICS AND
POLITICAL SCIENCE

Introducing LSE Live

our new online LSE
events experience

Watch live from London

Join the global debate at LSE



WELCOME

Everyone is welcome to attend LSE's public events, where some of the most influential figures in the social sciences can be heard.

We look forward to welcoming you to our campus. For those who can't be with us in person, we're launching **LSE Live**, our new LSE events experience, this term. Our events will be streamed live online, allowing audiences across the world to tune in and join the global debate at LSE.

Browse this leaflet to find out what's on this term. All events are free, and all listings are correct at the time of going to print. To check the location, registration requirements and full details for each event, head to **lse.ac.uk/events**

Sign up to our e-newsletter to be the first to know about newly announced events at **lse.ac.uk/events/signup**


Podcasts and videos of most LSE events are available online at **lse.ac.uk/lse-player**



Alan Revel, Head of Events

Interested in attending an event?

 campus event  book your free ticket online

 join this event either on campus or online with LSE Live.

Visit our website for registration details for each event.



EVENTS 5-11

EXHIBITIONS 12

MORE ABOUT LSE RESEARCH 15

HOW TO FIND US 16

**VISIT THE EVENTS WEBSITE FOR
THE LATEST EVENT LISTINGS AND
REGISTRATION INFORMATION.**

lse.ac.uk/events

SUMMER TERM HIGHLIGHTS



Anti-globalism and the Future of the Liberal World Order

Peter Trubowitz

Tuesday 9 May, 6.30-8pm

Page 6



Central Bank Balance Sheet Expansion and Financial Stability

Raghuram Rajan

Wednesday 17 May, 6-7.45pm

Page 7



Know Your Place: how society sets us up to fail – and what we can do about it

Faiza Shaheen

Monday 19 June, 6.30-8pm

Page 11

APRIL

Wednesday 26, 6.30-8pm

 Hong Kong Theatre, CLM

Should Monarchy be Abolished?

Cynthia Barrow-Giles is Professor of Constitutional Governance and Politics, University of the West Indies. **Bob Morris** is Honorary Senior Research Associate, Constitution Unit, UCL. **Geoffrey Robertson KC** is a founding head of Doughty Street Chambers.

Some of the world's longstanding democracies are monarchies. But what is the case for a republic? What can we learn from the Caribbean and from Britain's own Republican experiment? **#LSEMonarchy**


Hosted by the Ralph Miliband Programme

THURSDAY 27 APRIL

LUKE COOPER



Thursday 27, 6.30-8pm

 Auditorium, CBG

Russian War on Ukraine: the death of a soldier told by his sister

Olesya Khromeychuk is Director of the Ukrainian Institute, London and author of *The Death of a Soldier told by his Sister*.

Discussants: **Luke Cooper**, Senior Research Fellow, LSE IDEAS, and **Tim Judah**, a journalist covering politics and conflict in Europe.

Olesya Khromeychuk provides a vivid answer as to why, facing a full-scale military onslaught from Russia in February 2022, the people of Ukraine chose to resist. **#LSEUkraine**

Hosted by the Conflict and Civicness Research Group





VISIT THE EVENTS WEBSITE FOR
THE LATEST EVENT LISTINGS AND
REGISTRATION INFORMATION.

lse.ac.uk/events

MAY

Tuesday 2, 6-7.15pm

  Hong Kong Theatre, CLM

The Dialogical Roots of Deduction

Catarina Dutilh Novaes is Professor of Philosophy and University Research Chair at VU Amsterdam, Professorial Fellow at Arché, University of St Andrews.

The 2022 Lakatos Award lecture is presented by Catarina Dutilh Novaes. [#LSELakatosAward](#)

Lakatos Award Lecture hosted by the Centre for Philosophy of Natural and Social Sciences

Wednesday 3, 6.30-8pm

  Auditorium, CBG

The Travelling Salesman Problem

William Cook is a professor at the University of Waterloo.

Is it possible to compute the shortest route through a large number of stops? The task, known as the traveling salesman problem, sounds simple enough. We discuss its history and its applications. [#LSEBillCook](#)

Hosted by the Department of Mathematics

Thursday 4, 6-7.30pm

  Auditorium, CBG

Shaping a 21st Century Policy Consensus

Pranab Bardhan is Distinguished Professor Emeritus of Economics, University of California, Berkeley. **Diane Coyle** is Bennett Professor of Public Policy, University of Cambridge.

Nicholas Stern is IG Patel Professor of Economics and Government, Co-Director of the India Observatory and Chair of the Grantham Research Institute, LSE.

Our panel of experts discuss emerging policy priorities and challenges, and how they can be implemented. [#LSEBeveridge](#)

Hosted by the School of Public Policy

Tuesday 9, 6.30-8pm

  Sheikh Zayed Theatre, NAB

Anti-globalism and the Future of the Liberal World Order

Brian Burgoon is Professor of International and Comparative Political Economy and Director of the Centre for European Studies, University of Amsterdam. **Michael Cox** is Emeritus Professor of International Relations, LSE. **Sara Hobolt** is Sutherland Chair in European Institutions and Professor, Department of Government, LSE.

Peter Trubowitz is Professor of International Relations and Director of the Phelan US Centre at LSE, and Associate Fellow at Chatham House.

This roundtable discusses *Geopolitics and Democracy*, the new book by Peter Trubowitz and Brian Burgoon, and its broader implications for democracy and the liberal order. [#LSEAntiglobalism](#)

Hosted by the Department of International Relations

Thursday 11, 6.30-8pm

  Old Theatre, OLD

Blood and Power

John Foot is Professor of History, University of Bristol and author of *Blood and Power: the rise and fall of Italian fascism*.

How much does the contemporary period of political upheaval in Italian politics compare to the past? And what does this mean for the left in Italy and beyond? [#LSEBloodandPower](#)

Hosted by the Ralph Miliband Programme

Monday 15, 6.30-8pm

 Old Theatre, OLD

What Would a Fair Society Look Like?

Daniel Chandler is an economist and philosopher based at LSE and author of *Free and Equal*.

David Runciman is Professor of Politics, Cambridge University. **Polly Toynbee**, *Guardian* columnist, is a former BBC Social Affairs Editor.

Daniel Chandler explores how the ideas of political philosopher John Rawls can help us rehabilitate liberalism, reinvigorate democracy and transform – or even transcend – capitalism.

#LSESTICERD

Hosted by STICERD

Wednesday 17, 6-7.45pm

  Old Theatre, OLD

Central Bank Balance Sheet Expansion and Financial Stability


Raghuram Rajan is Katherine Dusak Miller Distinguished Service Professor of Finance at Chicago Booth.

Raghuram Rajan asks whether prior expansion and then shrinkage of the central bank's balance sheets has left the private financial sector more vulnerable to future disruption.

#LSEUKEconomy

PGIM Lecture Series in Honour of Charles Goodhart, part of the "Understanding the UK Economy" series hosted by the Financial Markets Group

Thursday 18, 6.30-8pm

 Old Theatre, OLD

Putting Bourdieu and Marx in Dialogue

Bridget Fowler is Emeritus Professor of Sociology, University of Glasgow. **Poornima Paidipaty** is Lecturer in Comparative Political Economy, King's College London. **Gabriella Paolucci** is Associate Professor in Sociology, University of Florence and editor of *Bourdieu and Marx*.

Gabriella Paolucci's *Bourdieu and Marx* is the first sustained work reflecting on the relations between these two major theorists.

#LSEBourdieuAndMarx

Hosted by the Department of Sociology

MONDAY 22 MAY
WILLIAM MACASKILL



Monday 22, 6.30-8pm

 Old Theatre, OLD

What We Owe the Future: in conversation with William MacAskill

William MacAskill is Associate Professor in Philosophy, University of Oxford and author of *What We Owe the Future*.

Does what we do today determine the happiness or misery of people in the future? William MacAskill argues for "longtermism", proposing that positively influencing the future is the moral priority of our time. **#LSEMacAskill**

Hosted by the Marshall Institute

Tuesday 23, 6.30-8pm

 Old Theatre, OLD

Time to Think: in conversation with Hannah Barnes

Hannah Barnes is a journalist at the BBC's *Newsnight* and author of *Time to Think*.

Lucinda Platt is Professor of Social Policy and Sociology, LSE.

Hannah Barnes speaks to Lucinda Platt about her book *Time to Think*, the result of her investigation into the Tavistock's gender service for children. **#LSETimeToThink**

Hosted by the Department of Social Policy

Wednesday 24, 6.30-8pm

 Sheikh Zayed Theatre, NAB

Patriarchy: where did it all begin?

Angela Saini is an award-winning journalist and author of *The Patriarchs*. **Discussant:**

Bee Rowlatt is a writer and public speaker and author of *In Search of Mary*.

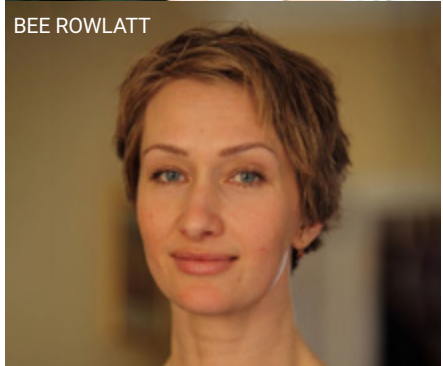
Sharing from *The Patriarchs*, Angela Saini reveals the true roots of gendered oppression, and the complex history of how male domination became embedded in societies across the globe. **#LSEWollstonecraft**

Wollstonecraft Society Lecture hosted by the LSE International Inequalities Institute


WEDNESDAY 24 MAY
ANGELA SAINI



BEE ROWLATT



Thursday 25, 6-7pm

 Old Theatre, OLD

Ontological Polyglossia: the art of communicating in opacity

Charles Stépanoff is Director of Studies, École des Hautes Études en Sciences Sociales, Paris.

What do communicating with a baby, an ancestor and an animal, have in common? Their minds are opaque to us, which requires our imagination and communicational creativity. We explore this polyglossia in ritual language and kinship relationships in Siberia.

#LSEMalinowski

Malinowski Memorial Lecture hosted by the Department of Anthropology

WEDNESDAY 31 MAY
RAJ CHETTY



Wednesday 31, 6.30-8pm

 Old Theatre, OLD

Social Capital Measurement and Associations with Economic Mobility

Raj Chetty, William A Ackman Professor of Economics, Harvard University and Director of Opportunity Insights delivers the 2023 Morishima Lecture. **#LSEMorishima**

Morishima Lecture hosted by STICERD



LIKE US ON FACEBOOK

facebook.com.lseps



FOLLOW US ON TWITTER

[@lsepublicevents](https://twitter.com/lsepublicevents)

JUNE

Thursday 1, 6.30-8pm

  Sheikh Zayed Theatre, NAB

Global Governance in an Age of Fracture

Selina Ho is Assistant Professor in International Affairs and Co-Director, Centre on Asia and Globalisation, Lee Kuan Yew School of Public Policy, National University of Singapore.

Andrey Kortunov is Director General, Russian International Affairs Council. **Charles A Kupchan** is Professor of International Affairs, School of Foreign Service and Government Department, Georgetown University, and Senior Fellow, Council on Foreign Relations. **C Raja Mohan** is Senior Fellow, Asia Society Policy Institute, Delhi and Visiting Research Professor, Institute of South Asian Studies, National University of Singapore.

Support for traditional international institutions such as the UN and the WTO is weakening in the Global North as well as the Global South. We discuss the future of global governance.

#LSEUSGovernance

Hosted by the Phelan United States Centre

THURSDAY 1 JUNE

CHARLES A
KUPCHAN



C RAJA MOHAN



THURSDAY 1 JUNE
SELINA HO



Tuesday 6, 6.30-8pm

  Old Theatre, OLD

Economics, Hayek, and Large Language Models

Tyler Cowen is Holbert L Harris Professor of Economics, George Mason University and Director of the Mercatus Center.

For the first time, large language models allow us to converse with artificial intelligence on substantive questions of our choosing, including economics. How can they change our conception of how economies work?

#LSEUKEconomy

Part of the "Understanding the UK Economy" series, hosted by the Department of Economics

MONDAY 19 JUNE



KIMBERLY MCINTOSH



FAIZA SHAHEEN

Wednesday 7, 6.30-8pm

 Old Theatre, OLD

Black Ghost of Empire: failed emancipations, reparations, and Maroon ecologies


Hazel V Carby is Charles C and Dorathea S Dilley Professor Emeritus of African American Studies and Professor Emeritus of American Studies, Yale University. **Kris Manjapra** is Professor, Department of History, Tufts University and author of *Black Ghost of Empire: the long death of slavery and the failure of emancipation*.

Kris Manjapra considers the implications of *Black Ghost of Empire* for climate justice, arguing that during each supposed emancipation from slavery, Black people were dispossessed by moves meant to free them.

#LSEIII

Hosted by the International Inequalities Institute

Thursday 8, 6.30-8pm

 Old Theatre, OLD

The Future of Social Democracy

Adam Przeworski is Carroll and Milton Professor Emeritus, Department of Politics, New York University.

Social democracy has been central to the hopes of the democratic left for over a century. Does it face new opportunities and constraints in the wake of global economic crises and social change? **#LSESocialDemocracy**

Hosted by the Ralph Miliband Programme and the Department of Sociology

Monday 12 to Saturday 17

  LSE campus

LSE Festival 2023 – People and Change

How does change affect people? How do people effect change? Join us for a week of special events as global leaders, innovators and changemakers investigate how we can learn lessons from the past, tackle the challenges of today and shape the future.

#LSEFestival

WEDNESDAY 7 JUNE
KRIS MANJAPRA





GARY STEVENSON



GARY YOUNGE

Monday 19, 6.30-8pm

 Auditorium, CBG

Know Your Place: how society sets us up to fail – and what we can do about it

Kimberly McIntosh is a writer and researcher. **Faiza Shaheen** is Visiting Professor in Practice, LSE and Program Lead on Inequality and Exclusion, Pathfinders for Peaceful, Just and Inclusive Societies, Centre on International Cooperation, New York University. **Gary Stevenson** is an inequality economist and former trader. **Gary Younge** is Professor of Sociology, University of Manchester.

Our panel discuss Dr Shaheen's new book *Know Your Place: how society sets us up to fail – and what we can do about it*, prospects for social mobility in Britain today, and how we can create opportunities for all. [#LSEIII](#)

Hosted by the International Inequalities Institute

Tuesday 20, 6.30-8pm

 Sheikh Zayed Theatre, NAB


The Perfection Trap

Tom Curran is Associate Professor, Department of Psychological and Behavioural Science, LSE. **Natasha Devon** is a writer, campaigner and broadcaster at LBC.

When did "good enough" become the same as "perfect"? Why does society increasingly promote ideals that are completely unrealistic? And what does it mean for all of us that perfectionism is on the rise? [#LSEPerfectionTrap](#)

Hosted by the Department of Psychological and Behavioural Science

Thursday 29, 6.30-8pm

 Auditorium, CBG

Global Trends in Climate Litigation

Laura Clarke is the CEO of ClientEarth. **Laura Ford** is a partner and UK Head of Corporate Crime Investigations. **Diarmuid Murphy** works with the Sustainable Finance Unit at the EU Commission. **Birsha Ohdedar** is Lecturer in Climate Change and Environmental Law, SOAS. **Maria Antonia Tigre** is Global Climate Litigation Fellow, Sabin Center for Climate Change Law, Columbia Law School.

Report findings: **Catherine Higham**, Policy Fellow and **Joana Setzer**, Assistant Professorial Research Fellow, both at the Grantham Research Institute, LSE.

Marking the launch of the Grantham Research Institute's 2023 Global Trends in Climate Change Litigation Policy Report, a short presentation of the report's findings is followed by a panel discussion. [#LSEClimateLitigation](#)

Hosted by the Grantham Research Institute on Climate Change and the Environment

EXHIBITIONS

RUPTURED DOMESTICITY: SPACES OF REFUGE IN IRAQ

Bridging the gap between art and social science, our LSE Arts public exhibitions return to the Atrium Gallery, Old Building, this term.

Visitors are welcome Monday to Friday from 10am to 8pm.

Check our online listings for updates to the schedule.



Monday 3 April to Friday 12 May

Ruptured Domesticity: spaces of refuge in Iraq

How do people who have experienced war, trauma and loss create spaces of refuge in violated homes and cities? Twenty years after the invasion of Iraq, Dr Sana Murrani maps a visual archive exploring the ingenious everyday spatial practices of 15 Iraqis from the north to the south of the country, between 2003 and 2020.

Hosted by the Middle East Centre

Monday 29 May to Saturday 17 June

At the Heart of War: Ukrainian resilience and resistance through art

Impacted and transformed by the events of February 2022 and on, Ukrainian artists and photographers reflect on the war in their homeland and against their people.

Hosted by the European Institutes and the Department of International Relations, part of the LSE Festival: People and Change

Mapping People and Change

How can maps help us to understand the impacts of a rapidly changing world on people and communities?

Visit this LSE Festival exhibition in the Great Hall, Marshall Building from Monday 12 to Saturday 17 June.





THE LONDON SCHOOL
OF ECONOMICS AND
POLITICAL SCIENCE ■

12-17
JUNE



LSE FESTIVAL 2023

PEOPLE AND CHANGE



Full programme and
ticket information online

lse.ac.uk/festival



LSESU

2022

HOW ARE WE GETTING ON IN THE POST-COVID WORLD?

lse.ac.uk/festival

How can social sciences shape the world?

Find out more about what LSE researchers are working on and how they are making a difference.



Blogs



Films and podcasts



Research for the World
online magazine



LSE Festival





LSE theatres

Atrium Gallery, Old Theatre and Shaw Library (OLD)

Old Building, Houghton Street

Auditorium (CBG)

Basement, Centre Building, Houghton Street

Hong Kong Theatre (CLM)

Clement House, Aldwych

The Marshall Building (MAR)

44 Lincoln's Inn Fields

Sheikh Zayed Theatre and Wolfson Theatre (NAB)

New Academic Building, 54 Lincoln's Inn Fields

This building will be renamed in 2023.



Accessibility and special requirements

LSE aims to ensure equal access to these public events. The majority of venues are wheelchair accessible. Wheelchair spaces should be reserved in advance of the event.

The larger venues are fitted with infrared hearing support systems.

Please contact events@lse.ac.uk in advance of the event you plan to attend so that arrangements, where possible, can be made. For more information visit lse.ac.uk/events

AccessAble have produced detailed access guides to the LSE campus and residences, and route maps between key locations. These are available at lse.ac.uk/AccessAble

Parking for disabled badge holders

Visit the Westminster City Council website to find the nearest Blue Badge parking bays to LSE.

This information is also available on request in alternative formats.