

LSE

THE LONDON SCHOOL
OF ECONOMICS AND
POLITICAL SCIENCE ■

Anne Applebaum
Kristalina Georgieva
Eric Riez Angela Brav
Richard Florida
David Harvey Rachel Reeves
Jeffrey D Sachs

A DIARY OF EVENTS OPEN TO THE
LSE COMMUNITY AND THE PUBLIC

6 September – 17 December 2017

Most finance professionals can drive the car...

But do they understand
how the engine works?



At LSE, we believe in understanding why things work. We take you below the surface to understand the fundamentals of finance, giving you the tools to accelerate your career in a changing marketplace.

MSc Finance (Part-time)

The MSc Finance (Part-time) is LSE's most established Evening Master's programme. Taught in the evenings, it provides a unique opportunity for busy professionals to combine a full-time career with the opportunity to study a world-class MSc Finance programme that is grounded in academic depth and rigour.

Join us at an Information Evening:

26 February 2018 | 23 May 2018 | 18 July 2018

Register at lse.ac.uk/finance

WELCOME

Everyone is welcome to attend LSE's public events, where some of the most influential figures in the social sciences can be heard.

Events are generally free and open to all, with entry on a first come, first served basis – unless otherwise stated. It does get busy so we advise people to turn up 20 minutes before the advertised time. For ticketed events, please go to lse.ac.uk/events and fill in the online booking form to request a ticket. Allocations of tickets are set aside for LSE staff and students. Transcripts, podcasts and videos of an increasing number of LSE events are available online after the event at lse.ac.uk/events. Do remember that if you fancy grabbing a bite to eat before an event, or you want to sit and discuss the event with friends over a drink afterwards, there are a range of LSE catering outlets on campus. To see the different venues and their opening times please visit lse.ac.uk/cateringservices.

Just economics and politics? Think again. While LSE does not teach arts or music, there is a vibrant cultural side to the School – from weekly Thursday lunchtime free music concerts in the Shaw Library and an LSE orchestra and choir with their own professional conductors, to various film, art and photographic student societies, the LSE Festival and artist-in-residence projects. For more information please visit lse.ac.uk/arts.

If you would like to receive a copy of this leaflet termly, or if you would like to unsubscribe from our mailing list, please email events@lse.ac.uk or write to us at **"Events Leaflet Mailing List", LSE Events, Houghton St, London WC2A 2AE.**



Alan Revel, Head of Events

TICKETING INFORMATION

Events are generally free and open to all, with entry on a first come, first served basis – unless otherwise stated. If a ticket is required this will be indicated with the following symbol:

TICKET

WINTER TERM HIGHLIGHTS

Some highlighted events from this term's programme



**The Tycoon and the Escort:
the business of portraying
women in newspapers**

Eleanor Mills

Tuesday 19 September

PAGE 7



**Can National
Politics Still Support
International Integration?
the case for the EU**

Mario Monti

Monday 25 September

PAGE 8



**Post-Truth: why we have
reached peak bullshit and
what we can do about it**

Evan Davis

Wednesday 18 October

PAGE 16

FULL LISTINGS AT
lse.ac.uk/events



***British Journal of
Sociology Annual
Lecture: the social
life of DNA***

Alondra Nelson

Thursday 26 October

PAGE 19



DORA KOKAS

THURSDAY 7 DECEMBER

MUSIC AND ART

Concerts and exhibitions

PAGE 27

SEPTEMBER

Wednesday 6, 12-1pm

TICKET

Old Theatre, Old Building

The Interplay of Markets and Politics

Axel A Weber is Chairman of the Board of Directors at UBS Group AG and former President of the Bundesbank.

Dr Weber will discuss the interplay of markets and politics. [#LSEmarkets](#)

Info: Tickets available from Wednesday 30 August at lse.ac.uk/events.

Hosted by the Systemic Risk Centre and Centre for International Studies

Wednesday 6, 6.30-8pm

TICKET

Old Theatre, Old Building

A Place for All People

Richard Rogers, founder of Rogers Stirk Harbour + Partners, is one of the world's leading architects and urban thinkers.

DISCUSSANTS: **Amanda Levete** is a RIBA Stirling Prize winning architect and founder and principal of ALA. **Alan Yentob** is a television executive and presenter.

Richard Rogers will discuss his life and work to celebrate the launch of his memoir and manifesto for a better society, *A Place for All People*. [#LSERichardRogers](#)

Info: Tickets available from Tuesday 29 August at lse.ac.uk/events.

Hosted by LSE Cities

Thursday 7, 6.30-7.45pm

Sheikh Zayed Theatre, New Academic Building

If Only They Didn't Speak English: notes from Trump's America

Jon Sopel has been the BBC's North America Editor since 2014.

Jon Sopel will be talking about his new book *If Only They Didn't Speak English – Notes from Trump's America*. [#LSESopel](#)

Info: events@lse.ac.uk or call 020 7955 6043.

Hosted by the Department of Government

Friday 8, 2-5.30pm

TICKET

Wolfson Theatre,
New Academic Building

The Challenges of Trump's America and Xi's China: perspectives and strategies in Northeast and Southeast Asia

Aileen San Pablo-Baviera is a professor at the Asian Center, University of the Philippines.

Cheng-Chwee Kuik is Associate Professor, Strategic Studies and International Relations Program, National University of Malaysia.

John Hemmings is Director, Asia Studies Centre, Henry Jackson Centre. **Tomila**

Lankina is a professor at the Department of International Relations, LSE. **Adam Liff** is Assistant Professor of East Asian International Relations, School of Global and International Studies, Indiana University. **Darren Lim** is Lecturer in International Relations, College of Arts and Social Sciences, Australian National University. **Ann Marie Murphy** is Associate Professor, School of Diplomacy and International Relations, Seton Hall University.

How are states in Northeast and Southeast Asia responding to challenges posed by current dynamics of the great power competition between the US and China? [#LSETrump](#)

Info: Tickets available from Friday 25 August at lse.ac.uk/seac.

Hosted by the Saw Swee Hock Southeast Asia Centre and the Department of International Relations

Thursday 14, 6.30-8pm

TW1.G.01, Tower 1

A Changing Germany in a Changing Europe? The German Elections and its Implications for Europe

Christian Odendahl is Chief Economist, Centre for European Reform. **William**

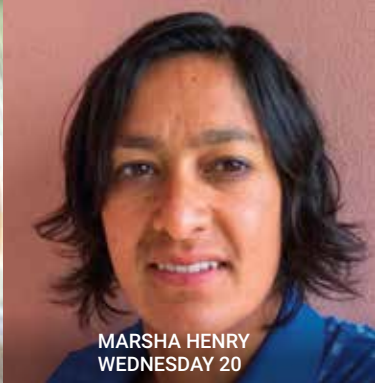
Paterson is Honorary Professor of German and European Politics, Aston University.



JON SOPEL
THURSDAY 7



KATIE HIND
TUESDAY 19



MARSHA HENRY
WEDNESDAY 20

Natascha Zaun is Assistant Professor in Migration Studies, European Institute, LSE.

The next German Chancellor will likely have a crucial impact on the Brexit negotiations. What other implications will the forthcoming elections have for Germany, Europe and international politics? **#LSEGermany**

Info: events@lse.ac.uk or call 020 7955 6043.

Hosted by the European Institute

Monday 18, 6.30-8pm

TICKET

Old Theatre, Old Building

Marx, Capital and the Madness of Economic Reason

David Harvey is Distinguished Professor of Anthropology, City University of New York Graduate School.

Leading Marxist scholar Professor Harvey will discuss the profound insights and enormous power Marx's analysis continues to offer 150 years after the first volume of *Capital* was published. **#LSEHarvey**

Info: Tickets available from Monday 11 September at lse.ac.uk/events.

Hosted by the Department of Geography and Environment

Tuesday 19, 6.30-8pm

Old Theatre, Old Building

The Tycoon and the Escort: the business of portraying women in newspapers

Marina Franchi is an LSE Fellow at LSE100: the LSE Course. She has a PhD in gender from LSE's Gender Institute. **Katie Hind** is a

showbusiness writer at the *Mail on Sunday*.

Jane Martinson is a *Guardian* columnist.

Eleanor Mills is Editorial Director of *The Sunday Times*, Editor of *The Sunday Times Magazine*, and Chair of Women in Journalism.

Allyson Zimmermann is Executive Director of Catalyst Europe.

Our panel will discuss how the front pages of national newspapers portray women in terms of content and bylines. **#LSEWiJ**

Info: events@lse.ac.uk or call 020 7955 6043.

Hosted by the LSE Business Review, Women in Journalism UK and Catalyst Inc

Wednesday 20, 6.30-8pm

Sheikh Zayed Theatre, New Academic Building

Reimagining Peacekeeping: gender, "race" and militarisation in the global order

Marsha Henry is Associate Professor, Department of Gender Studies and Deputy Director, Centre for Women, Peace and Security, LSE.

Dr Henry argues for reimagining peacekeeping, exploring the production of gendered, racial and classed inequalities in peacekeeping spaces and relations. **#LSEtalksgender**

Info: events@lse.ac.uk or call 020 7955 6043.

Hosted by the Department of Gender Studies

EVENTS GET BUSY! WE ADVISE

YOU TO ARRIVE 20 MINUTES

EARLY TO AVOID DISAPPOINTMENT



MARIO MONTI
MONDAY 25



BEVERLEY SKEGGS
TUESDAY 26



KRISTALINA GEORGIEVA
FRIDAY 29

Thursday 21, 6.30-8pm

TW1.G.01, Tower 1

UN Peace Operations: politics, human rights and leadership

Dianne Corner is former Deputy Special Representative of the Secretary General and Deputy Head of the UN Multidimensional Integrated Stabilization Mission in the Central African Republic. **Bintou Keita** is Deputy Joint Special Representative of the African Union-United Nations Hybrid Operation in Darfur. **Karin Landgren** is former Special Representative of the Secretary General and Head of UN Mission in Liberia.

Current and former women leaders of UN peace operations discuss some of the most challenging aspects facing UN peace operations today. [#LSEpeaceops](#)

Info: women.peace.security@lse.ac.uk or call 020 3486 2959.

Hosted by the Centre for Women, Peace and Security

Monday 25, 6.30-8pm

LSE campus, venue TBC
to ticketholders

TICKET

Can National Politics Still Support International Integration? The Case of the EU

Mario Monti is President of Bocconi University and former Prime Minister of Italy.

60 years after its foundation, major tensions are facing the EU. Despite the constant “-EXIT” threats, Professor Monti argues that the case for EU support is still robust. [#LSEEU](#)

Info: Tickets available from Monday 18 September at lse.ac.uk/events.

Hosted by the European Institute

Tuesday 26, 6.30-8pm

Sheikh Zayed Theatre, New Academic Building

You Are Being Tracked, Evaluated and Sold: an analysis of digital inequalities

Beverley Skeggs is Academic Director of the Atlantic Fellows programme, International Inequalities Institute, LSE.

Professor Skeggs argues that to know how inequalities are shaped, we need to understand the opaque mechanisms operating through stealth and experiment with our personal disclosures. [#LSESkeggs](#)

Info: events@lse.ac.uk or call 020 7955 6043.

Hosted by the International Inequalities Institute and Atlantic Fellows programme



LIKE US ON FACEBOOK

FACEBOOK.COM.LSEPS



FOLLOW US ON TWITTER

@LSEPUBLICEVENTS

Tuesday 26, 6.30-8pm

Wolfson Theatre, New Academic Building

Unrequited Love

Ulrika Carlsson is Assistant Professor in Philosophy, National Research University, Higher School of Economics, Russia.

Stephen Grosz is a psychoanalyst and author. **Erin Plunkett** is a teaching fellow at Royal Holloway, University of London.

What can responses to unrequited love from philosophy, psychoanalysis and art teach us about ourselves? Does it cause harm and is anyone to blame? **#LSEFEP**

Info: philosophy-forum@lse.ac.uk or call 020 7955 7539.

Hosted by The Forum

Wednesday 27, 6.30-8pm

Old Theatre, Old Building

Politics and Language in the Age of Trump

Mark Thompson is CEO of *The New York Times* and former Director-General of the BBC.

How did changes in political language influence the Brexit vote and the US election? And what do these changes mean for the crisis of trust in the establishment?

#LSEThompson

Info: events@lse.ac.uk or call 020 7955 6043.

Hosted by the Ralph Miliband Programme "Turbulent Times" series

Thursday 28, 6.30-8pm

Sheikh Zayed Theatre, New Academic Building

The Role of the Attorney General: in conversation with Shami Chakrabarti

Shami Chakrabarti is Shadow Attorney General for England and Wales and Visiting Professor in Practice at LSE Law.

Baroness Chakrabarti discusses her position as Shadow Attorney General for England and Wales with questions from the audience and online. **#LSEChakrabarti**

Info: events@lse.ac.uk or call 020 7955 6043.

Hosted by LSE Law

Friday 29, 6.30-8pm

LSE campus, venue TBC
to ticketholders

Financing Development: how the World Bank and other development institutions are meeting global needs

Kristalina Georgieva is Chief Executive Officer of the World Bank.

Demands on development assistance have risen in recent years, with pandemics, refugee crises and regional conflicts. Kristalina Georgieva draws out lessons on securing financing to meet these demands.

#LSEWorldBank

Info: Tickets available from Thursday 21 September at lse.ac.uk/events.

Hosted by the Financial Markets Group

Friday 29, 6.30-8pm

Wolfson Theatre, New Academic Building

Inequality in China: emotional costs and political risks

Wanning Sun is Professor of Media and Cultural Studies, University of Technology Sydney, Australia.

RESPONDENT: **Bingchun Meng** is Associate Professor and Deputy Head, Department of Media and Communications, LSE.

How does socioeconomic inequality shape the intimate lives of China's young rural migrants? This lecture draws on ethnography to explore the link between culture and inequality. **#LSEChina**

Info: m.etheridge@lse.ac.uk or call 020 7107 5176.

Hosted by the Department of Media and Communications

MISSED AN EVENT? PODCASTS AND VIDEOS OF MANY PAST LSE EVENTS CAN BE DOWNLOADED ONLINE AT [LSE.AC.UK/EVENTS](https://lse.ac.uk/events)

OCTOBER

Monday 2, 6.30-8.30pm

Old Theatre, Old Building

Man and Machine: the macroeconomics of the digital revolution

Jeffrey D Sachs is Professor of Economics at Columbia University, a leader in sustainable development, senior UN advisor, bestselling author and syndicated columnist.

Since the early 1800s, several waves of technological change have transformed how we work and live. Will they free us from drudgery or instead enslave us? **#LSESachs**

Info: Tickets available from Monday 25 September at lse.ac.uk/events.

Hosted by the Centre for Economic Performance and the International Growth Centre

TICKET

Monday 2, 6.30-8pm

Sheikh Zayed Theatre, New Academic Building

Is Post-Modernism to Blame for our Post-Truth World?

Mark Currie is Professor of Contemporary Literature, Queen Mary, University of London.

Alison Gibbons is Reader in Contemporary Stylistics, Sheffield Hallam University.

James Ladyman is Professor of Philosophy, University of Bristol. **Hillary Lawson** is Director, Institute of Art and Ideas.

Did Derrida make us do it? We explore the relationship between facts, alternative facts, and fiction, and the precarious status of truth in the 21st century. **#LSEFEP**

Info: events@lse.ac.uk or call 020 7955 6043.

Hosted by The Forum

EVENTS GET BUSY! WE ADVISE

YOU TO ARRIVE 20 MINUTES

EARLY TO AVOID DISAPPOINTMENT

Monday 2, 6.30-8pm

Wolfson Theatre, New Academic Building

Analyst, Advocate or Activist: how can a scientist support (good) climate policies?

Gavin Schmidt is Director of the NASA Goddard Institute for Space Studies, New York. **Leonard Smith** is Director of the Centre for the Analysis of Time Series, LSE.

Divisive policy issues cast scientists into roles from credible neutral broker, to advocate, to activist. Which is most effective? How does one judge success? **#science2inform**

Info: I.grove@lse.ac.uk or call 020 7955 6015.

Hosted by the Centre for the Analysis of Time Series

Tuesday 3, 6.30-8pm

Old Theatre, Old Building

A Proposal for Climate Justice

Jeffrey D Sachs is Professor of Economics at Columbia University, a leader in sustainable development, senior UN advisor, bestselling author and syndicated columnist.

Professor Sachs will introduce a proposed standard for climate action, financing, and side payments between countries. **#LSESachs**

Info: Tickets available from Tuesday 26 September at lse.ac.uk/events.

Hosted by Grantham Research Institute on Climate Change and the Environment

TICKET

Wednesday 4, 6.30-8pm

Sheikh Zayed Theatre, New Academic Building

The Skills Debate: the future for education and development

A panel will debate the future of education and development, the role of development institutions, civil society and the private sector.

#LSEskills

TICKET



JEFFREY D SACHS
MONDAY 2 AND TUESDAY 3



ANNE APPLEBAUM
WEDNESDAY 4



AC GRAYLING
THURSDAY 5

Info: Tickets available from Wednesday 27 September at lse.ac.uk/events.

Hosted by the Latin America and Caribbean Centre and Inter-American Development Bank

Wednesday 4, 6.30-8pm

Old Theatre, Old Building

Red Famine: Stalin's war on Ukraine, and why it still matters

Anne Applebaum is a journalist, historian and Professor in Practice, Institute of Global Affairs, LSE.

In 1932-33, nearly four million Ukrainians died of starvation, having been deliberately deprived of food. Anne Applebaum will explore how and why this happened and explain its lasting importance. **#LSEUkraine**

Info: events@lse.ac.uk or call 020 7955 6043.

Hosted by the Institute of Global Affairs

Wednesday 4, 6.30-8pm

Hong Kong Theatre, Clement House

Is Social Science Possible?

Daniel M Hausman is Herbert A Simon and Hildale Professor of Philosophy, University of Wisconsin-Madison.

Using economics as an example, Professor Hausman addresses a perennial philosophical question that also occupied Auguste Comte: can inquiries into social phenomena be sciences? **#LSEComte**

Info: events@lse.ac.uk or call 020 7955 6043.

The Auguste Comte Memorial Lecture hosted by the Department of Philosophy, Logic and Scientific Method

Thursday 5, 6.30-8pm

Wolfson Theatre, New Academic Building

Beyond Gridlock

Thomas Hale is Associate Professor of Public Policy, Blavatnik School of Government, University of Oxford. **David Held** is Professor of Politics and International Relations, Durham University. Their new book is *Beyond Gridlock*.

While multilateralism continues to fall short, Dr Hale and Professor Held identify systematic means to avoid or resist these forces and turn them into collective solutions. **#LSEBG**

Info: s.wise3@lse.ac.uk or call 020 7955 6821.

Hosted by the Department of International Relations

Thursday 5, 6.30-8pm

Old Theatre, Old Building

Where Next for Labour?

Stephen Fisher is Associate Professor in Political Sociology, University of Oxford and a leading election expert. **Rachel Shabi** is a British journalist and author. **Stewart Wood** is a Labour life peer in the House of Lords.

After a shock election result, a panel of leading analysts will ask what lies ahead for Jeremy Corbyn's Labour and what the party should do next. **#LSELabour**

Info: events@lse.ac.uk or call 020 7955 6043.

Hosted by the Ralph Miliband Programme "Turbulent Times" series

Thursday 5, 6.30-8pm

Sheikh Zayed Theatre, New Academic Building

Democracy and its Crisis

AC Grayling is an author, columnist, Professor of Philosophy and Master of the New College of the Humanities, London.

Winston Churchill described democracy as "the least bad of all systems." AC Grayling explores how democracy has been made to fail, and how to put it right. **#LSEGrayling**

Info: events@lse.ac.uk or call 020 7955 6043.

Hosted by the Department of Government

Friday 6, 6.30-8pm

Sheikh Zayed Theatre, New Academic Building

Can Intelligence Services do Good? A Conversation between Indian and Pakistani Former Chiefs

Amarjit Singh Dulat is former Chief of the Research and Analysis Wing. **Ehsan ul Haq** is former Director General of the Inter-Services Intelligence. **Aamir Ghauri** is former Director of Dunya TV. **Rahul Roy-Chaudhury** is Senior Fellow for South Asia, International Institute for Strategic Studies.

The panel will explore the nature of intelligence services in India and Pakistan, their challenges, limits and potentials towards domestic and international security issues. **#LSEIntelligence**

Info: southasiacentre@lse.ac.uk or call 020 7107 5330.

Hosted by the South Asia Centre

Monday 9, 6.30-8pm

Wolfson Theatre, New Academic Building

A Focus on Reforms: Bosnia and Herzegovina Vision 2020

Goran Mirascic is Assistant Professor of Economics, University Sarajevo School of Science and Technology and former Economic Policy Advisor to the Prime Minister of the Federation of Bosnia and Herzegovina. **Adnan Muminovic** is Political Economic Advisor, Office of the EU Special Representative in Bosnia and Herzegovina. **Michael Pugh** is Emeritus Professor of Peace and Conflict Studies, University of Bradford.

The EU's strategy for facilitating structural reforms in Bosnia and Herzegovina came after large-scale protests in 2014. Our speakers will discuss progress and obstacles to the Reform Agenda. **#LSEBiH**

Info: euroinst.lsee@lse.ac.uk or call 020 7955 7198.

Hosted by LSEE Research on South Eastern Europe

Monday 9, 6.30-8pm

TICKET

Sheikh Zayed Theatre, New Academic Building

The New Urban Crisis

Richard Florida is Director, Martin Prosperity Institute and Professor of Business and Creativity, Rotman School of Management, University of Toronto, and author of *The New Urban Crisis*.

Richard Florida demonstrates how the same forces that power the growth of the world's superstar cities also generate their vexing challenges: gentrification, unaffordability, segregation, and inequality.

#LSERichardFlorida

Info: Tickets available from Monday 2 October at lse.ac.uk/events.

Hosted by LSE Cities and the Centre for London

Tuesday 10, 6.30-8pm

Old Theatre, Old Building

Out of the Wreckage: a new politics for an age of crisis

George Monbiot is an author, activist and *Guardian* columnist.

A toxic ideology of extreme competition and individualism rules the world. George Monbiot argues for a new "politics of belonging" that radically transforms politics and economy.

#LSEMonbiot

Info: events@lse.ac.uk or call 020 7955 6043.

Hosted by the Ralph Miliband Programme "Turbulent Times" series

LSETHE LONDON SCHOOL
OF ECONOMICS AND
POLITICAL SCIENCE ■

EXECUTIVE LLM

PROGRAMME FOR WORKING PROFESSIONALS

**An innovative and intellectually exciting
part-time degree programme designed for
working professionals**

Study for the LLM by taking a set
of intensive modules over a period
of three to four years.



For further information, please visit:

lse.ac.uk/ellmLSEEXECUTIVE MASTER OF
PUBLIC ADMINISTRATION**BUILD
YOUR
FUTURE...****WITH AN
EMPA BUILT
AROUND YOU**

WHY CHOOSE THE EMPA AT LSE?

At LSE you'll learn directly from experts in economics, policy evaluation and political science. The executive format of our Master of Public Administration means you can combine your studies with your current job

– no career break necessary.

WHAT MAKES IT SO DIFFERENT?

- Over 19 months you'll learn in intense teaching blocks that are easier to fit in with your work schedule.
- Our technical training modules and practical workshops allow you to apply your new knowledge in your current role before you complete the course.
- There is no distance learning. Everything is taught face-to-face on campus at LSE so you can interact directly with our leading academics and invited experts in policy-making.

RECRUITING FOR DECEMBER 2017**FIND OUT MORE: www.lse.ac.uk/EMPA**



DANIEL HAUSMAN
WEDNESDAY 4



GEORGE MONBIOT
TUESDAY 10



ANGELA BRAV
WEDNESDAY 11

Tuesday 10, 6.30-8pm

Wolfson Theatre, New Academic Building

Invasive Species

Fred Pearce is a science journalist and author. **Chris Thomas** is Professor of Biology, University of York. **Emma Townshend** is an author and gardening columnist for the *Independent on Sunday*.

Non-native species have squawked, crawled, and rooted themselves in new environments. Is this really an ecological problem and what does it reveal about our own anxieties? **#LSEFEP**

Info: philosophy-forum@lse.ac.uk or call 020 7955 7539.

Hosted by The Forum

Wednesday 11, 6.30-8pm

Wolfson Theatre,
New Academic Building

Trump and the Middle East: incoherence, ideology and militarisation

Toby Dodge is Director, Middle East Centre and Professor in International Relations, Department of International Relations, LSE.

Professor Dodge reflects on the current and future implications of Trump's presidency on the Middle East. **#LSETrump**

Info: Tickets available from Wednesday 27 September at lse.ac.uk/mec.

Hosted by the Middle East Centre

TICKET

Wednesday 11, 6.30-8pm

Sheikh Zayed Theatre, New Academic Building

A Room with a View: managing from the top

Angela Brav is Chief Executive, Europe of InterContinental Hotels Group.

From front-desk to regional CEO of a leading hotel group, Angela Brav discusses leadership at a FTSE 100 company and business that is people focused. **#LSEwomenin**

Info: events@lse.ac.uk or call 020 7955 6043.

LSE Women in Business lecture series hosted by the Department of Management

Thursday 12, 6.30-8pm

Old Theatre, Old Building

The Political Economy of Monetary Solidarity: understanding the euro experiment

Philippe Legrain is founder of Think Tank OPEN and Senior Visiting Fellow, European Institute, LSE. **David Soskice** is Professor of Political Science and Economics, Department of Government, LSE. **Helen Thompson** is Professor of Political Economy, University of Cambridge.

DISCUSSANT: **Waltraud Schelkle** is Associate Professor of Political Economy, European Institute, LSE and author of *The Political Economy of Monetary Solidarity*.

The panel discuss Waltraud Schelkle's book, which offers an explanation of how the euro experiment came about and was sustained,

and provides a comparison with the United States. **#LSEEuro**

Info: events@lse.ac.uk or call 020 7955 6043.

Hosted by the European Institute

Thursday 12, 6.30-8pm

Shaw Library, Old Building

Art and the City

Luisa Bravo is Adjunct Associate Professor, Queensland University of Technology.

Thierry Maeder is a PhD student, University of Geneva. **Nela Milic** is Senior Lecturer, Design School, London College of Communication. **Martin Zebrecki** is a lecturer at the University of Leeds.

Artistic practices have long been disturbing relationships between art and space. This book launch features contributors introducing work from Beirut, London and Geneva. **#LSEart**

Info: c.mitchell1@lse.ac.uk or call 020 7107 5406.

Hosted by the Department of Geography and Environment

Monday 16, 6.30-8pm

Wolfson Theatre, New Academic Building

Non-Performing Loans and Resolving Private Sector Insolvency: experiences from the EU periphery and the case of Greece

Chrisos Gortsos is Professor of Public Economic Law, National and Kapodistrian University of Athens. **Nikolaos Karamouzis** is Chairman of the Board of Directors, Eurobank and Chairman, Hellenic Bank Association.

Platon Monokroussos is Visiting Professor in Practice, Hellenic Observatory, LSE and Group Chief Economist and Deputy General Manager, Eurobank Ergasias S A.

Our panel will explore themes, from Dr Monokroussos' and Professor Gortsos' new book, around private sector over-indebtedness and challenges for policymakers, investors and economic agents. **#LSEGreece**

Info: hellenicobservatory@lse.ac.uk or call 020 7107 5326.

Hosted by the Hellenic Observatory

Monday 16, 6.30-8pm

Sheikh Zayed Theatre, New Academic Building

Report It. Stop It: how can reports of sexual harassment and sexual violence change the culture

Jennifer Cirone manages community based services for Solace Women's Aid in Camden for survivors of domestic and sexual abuse. **Winne Li** is conducting a PhD in the Department of Media and Communications, LSE. **Tiffany Page** is co-founder of The 1752 Group. **Alison Phipps** is Professor of Gender Studies, University of Sussex. **Fiona Waye** is Senior Policy Lead in Inclusion, Equality and Diversity at Universities UK.

Our panel will examine the work that is underway to reform academic institutions, with a focus on reporting mechanisms, cultural change, and intersectional identities. **#LSEchangingculture**

Info: events@lse.ac.uk or call 020 7955 6043.

Hosted by the Equity, Diversity and Inclusion office, and the Department of Gender Studies

Tuesday 17, 6.30-8pm

Wolfson Theatre, New Academic Building

Digital Selves

David Berry is Professor of Digital Humanities and Co-Director, Sussex Humanities Lab, University of Sussex. **Legacy Russell** is writer, artist and founding theorist of Glitch Feminism. **Laurence Scott** is a literary critic and author.

What happens to memory, emotion, and thought in the age of Google? Can we embrace digital selfhood, or does digital culture only distort the self? **#LSEFEP**

Info: philosophy-forum@lse.ac.uk or call 020 7955 7539.

Hosted by The Forum



LIKE US ON FACEBOOK

FACEBOOK.COM.LSEPS



FOLLOW US ON TWITTER

@LSEPUBLICEVENTS



WINNIE LI
MONDAY 16



RIZAL SUKMA
TUESDAY 17



SAADI LAHLOU
WEDNESDAY 18

Tuesday 17, 6.30-8pm

Sheikh Zayed Theatre, New Academic Building

Indonesia in ASEAN: reconciliation, active engagement and strategic reassessment

Rizal Sukma is Indonesian Ambassador to the UK and Ireland.

Rizal Sukma shares an assessment of Indonesia's national and international priorities as the Association of Southeast Asian Nations gears up to mark its 50th anniversary.

#LSEASEAN

Info: events@lse.ac.uk or call 020 7955 6043.

Hosted by the Saw Swee Hock Southeast Asia Centre

Tuesday 17, 6.30-8pm

Old Theatre, Old Building

Economics for the Common Good

Jean Tirole, winner of the 2014 Nobel Prize in Economics, is Chairman, Toulouse School of Economics and Institute for Advanced Study in Toulouse.

Professor Tirole's transformation from academic economist to public intellectual prompted him to reflect on the role of economists in society. The result is his book *Economics for the Common Good*. **#LSETirole**

Info: Tickets available from Tuesday 10 October at lse.ac.uk/events.

Hosted by the Department of Economics and Centre for Macroeconomics

TICKET

Wednesday 18, 6.30-8pm

Sheikh Zayed Theatre, New Academic Building

Post-Truth: why we have reached peak bullshit and what we can do about it

Evan Davis is a broadcaster and presenter of the current affairs programme *Newsnight*.

Drawing on behavioural science, economics, psychology and his knowledge of the media, Evan Davis will discuss why bullshit has apparently become the communications strategy of our time. **#LSEposttruth**

Info: events@lse.ac.uk or call 020 7955 6043.

Hosted by the Institute of Public Affairs and Polis

Wednesday 18, 6.30-8pm

Old Theatre, Old Building

Installation Theory: the societal construction and regulation of behaviour

Saadi Lahlou is Chair in Social Psychology, Department of Psychological and Behavioural Science, LSE.

Professor Lahlou will discuss themes from his book *Installation Theory, a powerful and robust framework for nudge and intervention*.

#LSEbehaviour

Info: events@lse.ac.uk or call 020 7955 6043.

Hosted by the Department of Psychological and Behavioural Science



A class of their own

TRIUM's alliance of three world class schools attracts a remarkable network of high-achieving influential global business leaders building professional and personal connections with senior peers. Bold and innovative, TRIUM integrates geopolitical, economic and social policy issues into the business curriculum, enabling leaders to be the first to develop business strategies to tackle global, societal and transformative megatrends. TRIUM faculty is at the cutting edge of the business landscape: thought leaders whose research shapes international business theory and practice.

**Be part of an extraordinary learning community.
Find out more at triumemba.org**



Alumni featured above are:

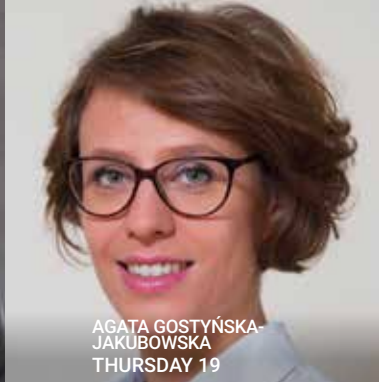
Barry Green, Class of 2007 / Quintin Potgieter, Class of 2014 / Sonja Laud, Class of 2015
Todd Wade, Class of 2009 / Odile Hounkpatin, Class of 2014 / Alexander Olivares, Class of 2014



JEAN TIROLE
TUESDAY 17



EVAN DAVIS
WEDNESDAY 18



AGATA GOSTYŃSKA-
JAKUBOWSKA
THURSDAY 19

Thursday 19, 6.30-8pm

Old Theatre, Old Building

Hard Brexit, Soft Brexit, No Brexit?

Agata Gostyńska-Jakubowska is a research fellow at the Centre for European Reform.

David McAllister is Chair of the Committee on Foreign Affairs in the European Parliament and a vice president of the European People's Party. **John Ryan** is Visiting Fellow, LSE IDEAS and a senior adviser for private and public sector organisations on Brexit.

Our panel will put relations between the UK, Germany and the EU in focus, exploring the likelihood and consequences of three Brexit scenarios. **#LSEBrexit**

Info: events@lse.ac.uk or call 020 7955 6043.

Hosted by LSE IDEAS and Konrad Adenauer Stiftung

Monday 23, 6.30-8pm

Old Theatre, Old Building

The Impact of Brexit on European Financial Centres

Pierre Gramegna is Minister for Finances in the Bettel-Schneider Ministry, Luxembourg.

Pierre Gramegna will discuss the dynamics behind financial services firms' decisions to relocate or grow their presence in continental Europe in the aftermath of Brexit. **#LSEBrexit**

Info: events@lse.ac.uk or call 020 7955 6043.

Hosted by the European Institute

Monday 23, 6.30-8pm

Wolfson Theatre, New Academic Building

Parallel Universes

Fay Dowker is Professor of Theoretical Physics, Imperial College London. **Eleanor Knox** is Senior Lecturer in Philosophy, King's College London. **Simon Saunders** is Professor of Philosophy of Physics, University of Oxford.

Why do some physicists and philosophers think there are parallel universes? Are they right? We explore the "many-worlds interpretation" of quantum mechanics and its strange consequences. **#LSEFEP**

Info: philosophy-forum@lse.ac.uk or call 020 7955 7539.

Hosted by The Forum

Wednesday 25, 6.30-8pm

Hong Kong Theatre, Clement House

Does Protest Really Work?

Steve Crawshaw is Senior Advocacy Adviser on Global Thematic Issues, Amnesty International and author of *Street Spirit: The Power of Protest and Mischief*.

How do ordinary citizens become dissidents? Steve Crawshaw will explore the "power of the powerless", and the role of creative mischief in achieving surprising change. **#LSEprotest**

Info: events@lse.ac.uk or call 020 7955 6043.

Hosted by the Ralph Miliband Programme "Turbulent Times" series



TINA CAMPT
WEDNESDAY 25



AHMAD AL-RASHID
MONDAY 30



SUMITA MUKHERJEE
TUESDAY 31

Wednesday 25, 6.30-8pm

Sheikh Zayed Theatre, New Academic Building

Flow: black bodies and the practice of refusal

Tina Campt is a black feminist theorist whose work explores gendered, racial and diasporic formation in black communities in Europe, the US and Southern Africa.

Professor Campt engages a series of “still moving” images of black life and the limits and boundaries created by its constituent antithesis – antiblackness. **#LSEtalksGender**

Info: events@lse.ac.uk or call 020 7955 6043.

Hosted by the Department of Gender Studies and Feminist Review

Thursday 26, 6.30-8pm

Old Theatre, Old Building

The Social Life of DNA

Alondra Nelson is Professor of Sociology and Gender Studies, Columbia University.

Professor Nelson will discuss her book *The Social Life of DNA* on how claims about ancestry are marshalled together with genetic analysis in a range of social ventures. **#LSEBJS**

Info: events@lse.ac.uk or call 020 7955 6043.

British Journal of Sociology Annual Lecture

Monday 30, 6.30-8pm

Sheikh Zayed Theatre, New Academic Building

Who is a Refugee?

Ahmad Al-Rashid is a writer and Syrian campaigner and postgraduate researcher at SOAS. **Phillip Cole** is Senior Lecturer in Politics and International Relations, University of West England. **Elsbeth Guild** is Jean Monnet Professor ad personam, Queen Mary, University of London.

Why are some people crossing borders called refugees while others are not? What reasons are there to distinguish between refugees, migrants and displaced people? **#LSEFEP**

Info: events@lse.ac.uk or call 020 7955 6043.

Hosted by The Forum

Tuesday 31, 6.30-7.45pm

Wolfson Theatre, New Academic Building

Indian Responses to British Women's Social Activism in the Interwar Period

Sumita Mukherjee is Senior Lecturer in History, University of Bristol.

Dr Mukherjee looks at the British women who were involved in social reform activities in India – especially Edith How-Martyn, Eileen Palmer, and Eleanor Rathbone.

#LSEIndependence

Info: d.payne1@lse.ac.uk or call 020 7955 6272.

Hosted by LSE Library

SOME OF OUR EVENTS ARE LIVE

STREAMED – SEE THE FULL LIST AT

LSE.AC.UK/LIVE

NOVEMBER

Wednesday 1, 6.30-8pm

TICKET

Old Theatre, Old Building

The Art of the Good Life: clear thinking for business and a better life

Rolf Dobelli is a Swiss writer, novelist and entrepreneur.

Rolf Dobelli will discuss his new book *The Art of the Good Life*, providing some surprising and indispensable mental shortcuts for better decision-making in life, work and business.

#LSEgoodlife

Info: Tickets available from Wednesday 25 October at lse.ac.uk/events.

Hosted by the LSE Business Review

Wednesday 1, 6.30-8pm

Sheikh Zayed Theatre, New Academic Building

Investing in Equality: the role of capital and justice in addressing inequality

Darren Walker is President of the Ford Foundation.

The Ford Foundation has identified inequality as the central issue of our time, but how can they ensure that philanthropic action achieves maximum impact? **#LSEFord**

Info: events@lse.ac.uk or call 020 7955 6043.

Hosted by the Atlantic Fellows Programme at the International Inequalities Institute

Thursday 2, 6.30-8pm

Old Theatre, Old Building

The Brexit Negotiations: make or break?

Sara Hobolt is Sutherland Chair in European Institutions, European Institute, LSE. **Philippe Legrain** is former advisor to the European Commission President and Visiting Senior Fellow, European Institute, LSE. **John Rentoul** is Chief Political Commentator, *The Independent* and a visiting professor at King's College London.

What will a Brexit deal look like? How does the British public view controversies over budget, jurisdiction and immigration? What are the risks of a breakdown in negotiations? **#LSEBrexit**

Info: events@lse.ac.uk or call 020 7955 6043.

Hosted by the European Institute

Monday 6, 6.30-8pm

TICKET

Old Theatre, Old Building

And Then God Created the Middle East and Said 'Let There be Breaking News and Analysis'

Karl Sharro, also known as Karl reMarks, is an architect and leading satirist and commentator on the Middle East.

Karl Sharro will talk about his six year journey of satirising how his enchanted native land is represented in Western media and punditry.

#LSEremarks

Info: Tickets available from Monday 23 October at lse.ac.uk/mec.

Hosted by the Middle East Centre

Monday 6, 6.30-8.30pm

TICKET

Wolfson Theatre,
New Academic Building

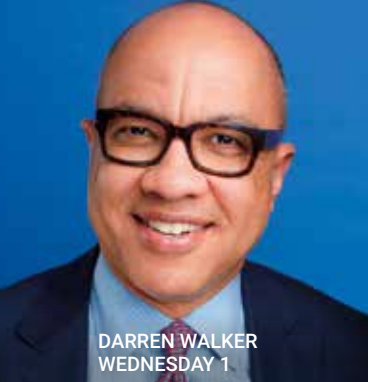
LGBT Rights: what next?

Angela Mason is Labour Councillor of Camden Council, and former Director of Stonewall and Chair of the Fawcett Society. **Chris Smith**, one of the first openly gay MPs, is Master of Pembroke College, Cambridge. **Peter Tatchell** is a human rights campaigner and Director of the Peter Tatchell Foundation.

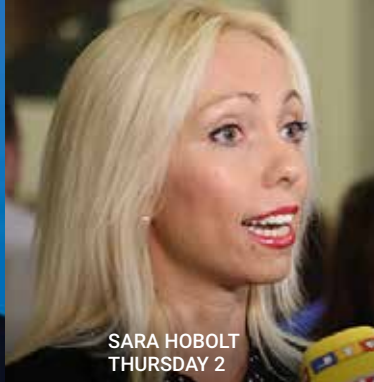
What has been achieved since the 1967 Sexual Offences Act and the partial discrimination of homosexuality? What hurdles still have to be overcome for LGBT rights? **#LSELGBT**

Info: Tickets available from Tuesday 3 October at lse.ac.uk/spectrum.

Hosted by LSE Library and Spectrum



DARREN WALKER
WEDNESDAY 1



SARA HOBOLT
THURSDAY 2



PETER TATCHELL
MONDAY 6

Tuesday 7, 6.30-8pm

Old Theatre, Old Building

Gender Equality: how can the UN lead?

Jane Connors is International Advocacy Director Law and Policy, Amnesty International. **Aoife O'Donoghue** is a professor at Durham Law School. **Rosalyn Park** is Director, Women's Human Rights Program, The Advocates for Human Rights. **Navanethem Pillay** served as United Nations High Commissioner for Human Rights 2008-14.

Does gender inequality within the UN impact on its leadership of the Sustainable Development Goals and broader development policy? What causes this inequality?

#LSEUNgender

Info: events@lse.ac.uk or call 020 7955 6043.

Hosted by the Centre for Women, Peace and Security

Tuesday 7, 6.30-8pm

Sheikh Zayed Theatre, New Academic Building

The War on Organised Crime

John Collins is Executive Director, LSE IDEAS International Drug Policy Project. **Misha Glenny** is an investigative journalist and author of *McMafia*. **Sasha Jespersen** is Director, Centre for the Study of Modern Slavery, St Mary's University Twickenham. **Tuesday Reitano** is Deputy Director, Global Initiative against Transnational Organized Crime. **Mark Shaw** is Director, Global Initiative against Transnational Organized Crime and Senior Visiting Fellow, LSE IDEAS International Drug Policy Project.

This event explores how organised crime has evolved in response to globalisation, from the

failing "war on drugs" to human trafficking and wildlife crime. **#LSEcrime**

Info: events@lse.ac.uk or call 020 7955 6043.

Hosted by LSE IDEAS

Wednesday 8, 6.30-8pm

Sheikh Zayed Theatre, New Academic Building

The Politics of Mental Health

Victoria Dutchman Smith is a journalist and commentator. **Emmy Eklundh** is Teaching Fellow in Spanish and International Politics, King's College London. **Matthew Radcliffe** is Professor for Theoretical Philosophy, University of Vienna.

At the intersection of the personal and the political, we explore the relationship between mental health and economics, politics, and society. **#LSEFEP**

Info: events@lse.ac.uk or call 020 7955 6043.

Hosted by The Forum

Wednesday 8, 6.30-8pm

Old Theatre, Old Building

What We Treasure We Measure: a theatrical engagement with gender in/equality

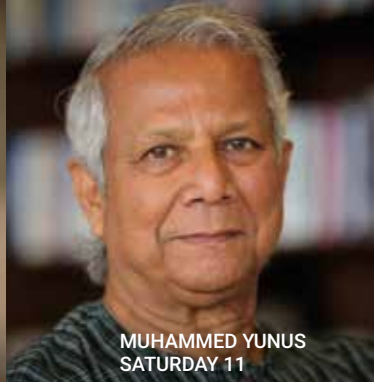
PartecipArte Theatre Company present a 'Theatrical PowerPoint' which shows, with human slides and living statues, different ways to approach and understand current levels of gender equality. **#LSEtalksgender**

Info: events@lse.ac.uk or call 020 7955 6043.

Hosted by the Department of Gender Studies, the Department of Statistics, and the Atlantic Fellows programme at the International Inequalities Institute



RACHEL REEVES
THURSDAY 9



MUHAMMED YUNUS
SATURDAY 11



PARTHA DASGUPTA
TUESDAY 14

Thursday 9, 6-7.30pm

Old Theatre, Old Building

Lakatos Award Lectures

Brian Epstein is an associate professor of Philosophy at Tufts University. **Thomas Pradeu** is Research Director in Philosophy of Science, CNRS Immunology Unit and University of Bordeaux.

The Lakatos Award is given for an outstanding contribution to the philosophy of science. The 2015 award winner Dr Pradeu will speak on "Why Philosophy in Science? Re-Visiting Immunology and Biological Individuality" and the 2016 award winner Dr Epstein on "Rebuilding the Foundations of the Social Sciences". **#LSELakatos**

Info: events@lse.ac.uk or call 020 7955 6043.

Hosted by the Department of Philosophy, Logic and Scientific Method

Thursday 9, 6.30-8pm

Wolfson Theatre, New Academic Building

Alice in Westminster: the political life of Alice Bacon

Rachel Reeves is Labour MP for Leeds West. She is the second woman to represent Leeds in the House of Commons.

Rachel Reeves discusses the political life and legacy of Alice Bacon – the first woman MP for Leeds and Yorkshire. **#LSEBacon**

Info: gov.comms@lse.ac.uk or call 020 7955 7553.

Hosted by the Department of Government

Saturday 11, 6.30-8pm

Old Theatre, Old Building

TICKET

A World of Three Zeroes: the new economics of zero poverty, zero unemployment, and zero carbon emissions

Muhammed Yunus is the economist who invented microcredit, founded Grameen Bank, and earned a Nobel Peace Prize for his work towards alleviating poverty.

The capitalist system, in its current form, is broken. Dr Yunus outlines his radical economic vision for fixing it, as explored in his new book *A World of Three Zeroes*. **#LSEYunus**

Info: Tickets available from Thursday 2

November at lse.ac.uk/events.

Hosted by the Department of Economics and the Centre for Macroeconomics

Monday 13, 6.30-8pm

Wolfson Theatre, New Academic Building

Sexualities and Ageing: the case of Cyprus

Joanne Bowring is Research Officer, Terrence Higgins Trust. **Constantinos N Phellas** is a medical sociologist and Vice Rector for Faculty and Research, University of Nicosia, Cyprus.

This talk will explore the social and psychological needs of people aged 50 or over living with HIV/ AIDS and present the findings from a comparative study between the UK and Cyprus. **#LSECyprus**

Info: hellenicobservatory@lse.ac.uk or call 020 7107 5326.

Hosted by the Hellenic Observatory and the Department of Social Policy



HOLD YOUR EVENT AT LSE

From small meeting rooms for eight, through to the 1,000 seat Peacock Theatre, LSE offers a wide choice of centrally located conference facilities, available to hire for events, meetings, lectures and larger conferences.

For further details or enquiries please contact LSE Event Services, Tel: **+44 (0)20 7955 7087**, email: **event.services@lse.ac.uk** or web: **lse.ac.uk/lseeventservices**

GREAT LEADERS THINK **DIFFERENTLY**



Executive Global Master's in Management

THE STANDOUT ALTERNATIVE TO AN MBA

lse.ac.uk/egmim

Tuesday 14, 6.30-8pm

Wolfson Theatre, New Academic Building

Strong Feelings

Luke Brunning is British Academy Postdoctoral Research Fellow, University of Oxford. **Luna Dolezal** is Lecturer in Philosophy and Medical Humanities, University of Exeter. **MM McCabe** is Emeritus Professor of Ancient Philosophy, King's College London.

Reason is often contrasted with emotion, but what if emotion is essential for understanding traditional philosophical ideas? **#LSEFEP**

Info: philosophy-forum@lse.ac.uk or call 020 7955 7539.

Hosted by The Forum

Tuesday 14, 6.30-8pm

Sheikh Zayed Theatre, New Academic Building

How Many People Can Earth Support in Comfort?

Partha Dasgupta is Frank Ramsey Professor Emeritus of Economics, University of Cambridge.

Sir Partha Dasgupta will attempt to estimate the size of the global population that Earth can support in comfort under foreseeable technologies and institutions. **#LSEDasgupta**

Info: events@lse.ac.uk or call 020 7955 6043.

Hosted by the Grantham Research Institute on Climate Change and the Environment

Wednesday 15, 6.30-8pm

Hong Kong Theatre, Clement House

The Multinational World: how cities and regions win or lose in the global innovation contest

Riccardo Crescenzi is Professor of Economic Geography, LSE.

Global flows of capital, skills and knowledge bundled by multinationals have enormous transformative power. Why and how do they help some cities and regions to prosper? **#LSEmultinational**

Info: events@lse.ac.uk or call 020 7955 6043.

Inaugural lecture, hosted by the Department of Geography and Environment

Thursday 16, 6.30-8pm

Old Theatre, Old Building

TICKET

How Entrepreneurial Management Transforms Culture and Drives Growth

Eric Ries is an entrepreneur and author of *The Lean Startup*.

Organisations of any size can be lean, agile and innovative. Become faster and smarter as Eric Ries shows us the startup way.

#LSEstartup

Info: Tickets available from Thursday 9 November at lse.ac.uk/events.

Hosted by the Department of Management

Thursday 16, 6.30-8pm

Sheikh Zayed Theatre, New Academic Building

Partners or Adversaries? Managing US-China Relations in the Era of Trump

Michael Mastanduno is Nelson A Rockefeller Professor of Government, Dartmouth College.

The post-Cold War US-China "grand bargain" in economics and security is now unravelling, and faces new uncertainty in the era of Trump.

#LSEMastanduno

Info: events@lse.ac.uk or call 020 7955 6043.

Susan Strange Inaugural Lecture hosted by the Department of International Relations

Monday 20, 6.30-8pm

Wolfson Theatre, New Academic Building

The Minds of Birds

Nicky Clayton is Professor of Comparative Cognition, University of Cambridge. **Mark Cocker** is an author and naturalist.

What is it like to be a bird? We consider how birds shaped human thought and culture, and offer a bird's eye view on the world. **#LSEFEP**

Info: philosophy-forum@lse.ac.uk or call 020 7955 7539.

Hosted by The Forum

Wednesday 22, 6.30-8pm

TICKET

Hong Kong Theatre, Clement House

Partition, 70 years on: what have we learnt from the division of India?

Kishwar Desai, author, chairs the trust which set up the world's first Partition Museum (Amritsar) on the 1947 Partition of India.

Lady Desai recalls partition in India and the violent division that followed it, and considers the lessons for other countries, and whether partition and division are ever repairable. **#LSEMP**

Info: Tickets available from Wednesday 15 November at lse.ac.uk/events.

Hosted by the Migration Museum Project

Wednesday 22, 6.30-8pm

Wolfson Theatre, New Academic Building

Distributing Retributive Desert

Kimberly Kessler Ferzan is Harrison Robertson Professor of Law and Caddell and Chapman Professor of Law, University of Virginia School of Law.

How should retributive desert be distributed in a world of undeserved suffering, different susceptibilities, and scarcity? **#LSEdesert**

Info: law.events@lse.ac.uk or call 020 7955 7687.

Hosted by LSE Law

Thursday 23, 6.30-8pm

Sheikh Zayed Theatre, New Academic Building

Doughnut Economics: seven ways to think like a 21st century economist

Kate Raworth is an author and Senior Visiting Research Associate, Environmental Change Institute, University of Oxford.

DISCUSSANT: **Oriana Bandiera** is Professor of Economics, LSE.

Kate Raworth handpicks the best emergent ideas from ecological, feminist, behavioural and institutional economics to complexity thinking and Earth-systems science, to reveal the insights of eclectic economic re-thinkers. **#LSEdoughnut**

Info: events@lse.ac.uk or call 020 7955 6043.

Hosted by the Department of International Development

Friday 24, 6.30-8pm

Old Theatre, Old Building

Guru Gobind Singh Memorial Lecture

Meena Dhanda is Reader in Philosophy and Cultural Politics, University of Wolverhampton.

Dr Dhanda will commemorate the 350th birth anniversary of the 10th Sikh Guru, Guru Gobind Singh. **#LSEdhandha**

Info: events@lse.ac.uk or call 020 7955 6043.

Hosted by the South Asia Centre

Monday 27, 6.30-8pm

Sheikh Zayed Theatre, New Academic Building

The Great Leveler: violence and the history of inequality from the Stone Age to the future

Walter Scheidel is Dickason Professor in the Humanities, Professor of Classics and History, and Kennedy-Grossman Fellow in Human Biology, Stanford University.

Throughout history only violent shocks have significantly reduced economic inequality: war, revolution, plagues. Professor Scheidel considers the prospects of levelling in today's more stable world. **#LSEScheidel**

Info: events@lse.ac.uk or call 020 7955 6043.

Hosted by the International Inequalities Institute and supported by the Joseph Rowntree Foundation

Tuesday 28, 6.30-8pm

Sheikh Zayed Theatre, New Academic Building

Cash: the future of money in the Bitcoin age

Tatiana Cutts is Assistant Professor of Law, LSE Law. **Nigel Dodd** is Professor of Sociology, LSE. **Eva Micheler** is Associate Professor in Law, LSE Law.

As some countries move towards a cashless society, a panel of experts explore the nature of money in our society and the future of cryptocurrencies. **#LSEcash**

Info: events@lse.ac.uk or call 020 7955 6043.

Hosted by LSE Law

LSE

THE LONDON SCHOOL
OF ECONOMICS AND
POLITICAL SCIENCE ■

LSE Festival

Beveridge 2.0:

Rethinking Beveridge for the 21st century

Monday 19 – Saturday 24 February 2018

75 years ago in December 1942, the Government unveiled plans for a welfare state offering universal care “from the cradle to the grave”. In the report, William Beveridge, a former LSE Director (1919–37), identified “Five Giants” blocking post-war progress – Want, Disease, Ignorance, Squalor and Idleness.

Re-cast for the 21st century, these are: the challenges of poverty; health and social care; education and skills; housing and urbanisation; and the future of work. Join us for a series of thought-provoking social science events on these themes, which will be free to attend and open to all.

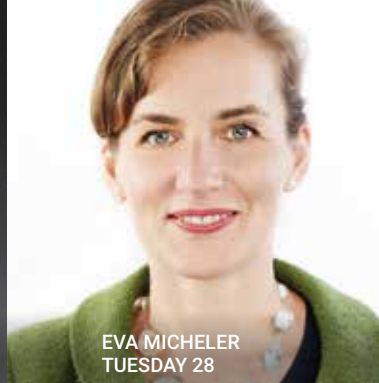
Full programme online January 2018 at lse.ac.uk/events



KISHWAR DESAI
WEDNESDAY 22



KATE RAWORTH
THURSDAY 23



EVA MICHELER
TUESDAY 28

Wednesday 29, 6.30-8pm

TICKET

Wolfson Theatre,
New Academic Building

Enemies and Neighbours: Arabs and Jews in Palestine and Israel, 1917-2017

Ian Black is Visiting Senior Fellow, LSE Middle East Centre and a former Middle East editor, diplomatic editor and European editor for the *Guardian*.

Ian Black launches his new book, offering a major new history of the Arab-Zionist conflict from 1917 to today, published on the centenary of the Balfour Declaration.

#LSEBlack

Info: Tickets available from Wednesday 15 November at lse.ac.uk/mec.

Hosted by the Middle East Centre

Wednesday 29, 6.30-8pm

Sheikh Zayed Theatre, New Academic Building

Sovereignty

Serena Ferente is Senior Lecturer in Medieval European History, King's College London.

Carmen Pavel is Lecturer in International Politics, King's College London. **David**

Runciman is Professor of Politics, University of Cambridge.

What is sovereignty and why is it so highly prized? Is there any role for it in our globalised world? **#LSEFEP**

Info: events@lse.ac.uk or call 020 7955 6043.

Hosted by The Forum

Thursday 30, 6.30-8pm

Old Theatre, Old Building

Game Theory Through the Computational Lens

Tim Roughgarden is Professor in the Computer Science and (by courtesy) Management Science and Engineering Departments, Stanford University.

Professor Roughgarden presents an intertwined tale of game theory and computer science, from their origins in the early 20th century to their modern roles in billion-dollar auctions. **#LSEmaths**

Info: events@lse.ac.uk or call 020 7955 6043.

Hosted by the Department of Mathematics

**MISSED AN EVENT? PODCASTS AND
VIDEOS OF MANY PAST LSE EVENTS
CAN BE DOWNLOADED ONLINE AT
[LSE.AC.UK/EVENTS](https://lse.ac.uk/events)**

DECEMBER

Monday 4, 6.30-8pm

Wolfson Theatre, New Academic Building

Pakistan and the Grand Narratives of 20th Century History

David Gilmartin is Professor of History, North Carolina State University.

Dr Gilmartin explores the different understandings of the birth of Pakistan as produced by competing narratives of 20th century world history. [#LSEGilmartin](#)

Info: southasiacentre@lse.ac.uk or call 020 7107 5330.

Hosted by the South Asia Centre and LSE Library

Tuesday 5, 6.30-8pm

Wolfson Theatre, New Academic Building

Time Travel

Adam Roberts is Professor of Nineteenth Century Literature, Royal Holloway, University of London. **Bryan W Roberts** is Assistant Professor of Philosophy, LSE. **Emily Thomas** is Lecturer in Philosophy, Durham University.

Two philosophers and a science fiction writer discuss time travel, and how thinking and writing about it has changed science and philosophy. [#LSEFEP](#)

Info: philosophy-forum@lse.ac.uk or call 020 7955 7539.

Hosted by The Forum

Thursday 7, 6.30-8pm

Old Theatre, Old Building

Exploitation and the Gig Economy

Brhmie Balaram is Senior Researcher, Royal Society for the Encouragement of Arts, Manufactures and Commerce, and co-author of *Good Gigs: a fairer future for the UK's gig economy*. **Jason Moyer-Lee** is General Secretary, Independent Workers of Great Britain union.

The gig economy is on the rise and with it worries about exploitation. Leading experts will analyse how to deal with the challenges and opportunities of new ways of working. [#LSEgig](#)

Info: events@lse.ac.uk or call 020 7955 6043.

Hosted by the Ralph Miliband Programme "Turbulent Times" series



LIKE US ON FACEBOOK

FACEBOOK.COM.LSEPS



FOLLOW US ON TWITTER

@LSEPUBLICEVENTS

MUSIC AND ART

Concerts and exhibitions



©TOM BARNES

JENNIFER PIKE
THURSDAY 28 SEPTEMBER

MUSIC AND ART

Concerts

Thursday 28 September, 1.05-2pm

Shaw Library, Old Building

Jennifer Pike (violin), Petr Limonov (piano)

Jennifer Pike first gained international recognition when, aged 12, she became the youngest-ever winner of the BBC Young Musician of the Year and major prize winner in the Menuhin International Violin Competition. She has played with the world's leading orchestras and conductors. Petr Limonov is a conductor of the London International Chamber Orchestra.

Programme: **Bacewicz** *Polish Caprice* and *Caprice No.4*, **Szymanowski** *Violin Sonata*, **Gorecki** "Farewell", **Karłowicz** "Impromptu", **Wieniawski** *Polonaise de Concert in D Major*.

Info: events@lse.ac.uk or call 020 7955 6043.

LSE lunchtime concert

Thursday 5 October, 1.05-2pm

Shaw Library, Old Building

Boris Bisjak (flute), Maria Canyigueral (piano)

Boris Bisjak is first prize winner of national flute competitions in Slovenia and France. His pianist Maria Canyigueral won a gold medal at the Global Music Awards for her CD with violinist Lana Trotovshek.

Programme: **Beethoven** "Spring" *Sonata Op.24 No.5* (arr. flute by Boris Bizjak), **Mompou** *Cançó i dansa' No. 1* (solo piano), **Granados** *Allegro de Concierto Op.46* (solo piano), **Martini** *Sonata for flute and piano*.

Info: events@lse.ac.uk or call 020 7955 6043.

LSE lunchtime concert

Thursday 12 October, 1.05-2pm

Shaw Library, Old Building

Monte Piano Trio

Monte Piano Trio are Francesco Sica (violin), Claude Frochaux (cello) and Irina Botan (piano). The Trio has played in many of the world's major concert halls and their CDs *From a Tender Age* and *Triptych* received outstanding reviews. The *Sunday Times* say, "The Monte Piano Trio play superbly, cleverly balancing transparency and richness."

Programme: **Amy Beach** *Trio Op. 150*, **Dvořák** *Piano Trio in F Minor Op. 65*.

Info: events@lse.ac.uk or call 020 7955 6043.

LSE lunchtime concert

Thursday 19 October, 1.05-2pm

Shaw Library, Old Building

Cassius Trio

Cassius Trio are Martyn Jackson (violin), Ann Beilby (viola) and Reinoud Ford (cello). All three members are in demand as soloists and chamber players and have won major awards in the Royal Overseas League Competition.

Programme: **Beethoven** *String Trio in E-Flat Major, Op. 3*, **Kodaly** *Intermezzo for String Trio*, **Dohnanyi** *Serenade in C Major for String Trio, Op. 10*.

Info: events@lse.ac.uk or call 020 7955 6043.

LSE lunchtime concert

EVENTS GET BUSY! WE ADVISE

YOU TO ARRIVE 20 MINUTES

EARLY TO AVOID DISAPPOINTMENT



**BORIS BISJAK AND
MARIA CANYIGUERAL**
5 OCTOBER



DUO ARNICANS
2 NOVEMBER

Thursday 26 October, 1.05-2pm

Shaw Library, Old Building

Martino Tirimo and Atsuko Kawakami (piano duet)

Tirimo is a master pianist who has appeared with the world's leading orchestras and made over 80 recordings, including the entire piano works of Debussy, Mozart, Chopin, Janacek and Beethoven. Kawakami has appeared in the UK, Germany and Japan as chamber musician and solo pianist, her repertoire extending from Scarlatti to Takemitsu.

Programme: **Schubert** *Fantasie in F Minor D943*, **Ravel** *Rapsodie Espagnol*, **Tchaikovsky** *Sleeping Beauty Suite (arranged Rachmaninov)*.

Info: events@lse.ac.uk or call 020 7955 6043.

LSE lunchtime concert

Thursday 2 November, 1.05-2pm

Shaw Library, Old Building

Duo Arnicans

Duo Arnicans are Florian Arnicans (cello) and Arta Arnicanne (piano). Their latest CD received favourable reviews by Musicweb International who said, "The assured Duo Arnicans communicate an engaging emotional response secured through judiciously prepared and sharply-honed playing".

Programme: **Bach** *Arioso*, **Schubert** *Ständchen*, **Mendelssohn** *Lied Ohne Worte Op. 109*, **Dvořák** *Melodie*, **Casals** *Song of the Birds (cello solo)*, **De Falla** *Suite Populaire Espagnole* and works by **Suk**, **Jermaks** and **Ravel**.

Info: events@lse.ac.uk or call 020 7955 6043.

LSE lunchtime concert

Thursday 9 November, 1.05-2pm

Shaw Library, Old Building

Zoffany Ensemble

Zoffany Ensemble are Manon Derome, Hannah Dawson (violins), Catherine Musker, (viola) and Anthony Pleeth (cello). One of the greatest and most popular works of chamber music ever composed is performed for the first time at LSE by this group of distinguished professional musicians.

Programme: **Schubert** *String Quintet in C Major D956*.

Info: events@lse.ac.uk or call 020 7955 6043.

LSE lunchtime concert

Thursday 16 November, 1.05-2pm

Shaw Library, Old Building

Marina Nadiradze (piano)

Marina is a prizewinner in several international competitions, and *The Independent* compared her playing to the great Mitsuko Uchida.

Programme: **Scarlatti** *2 Sonatas*, **Chopin** *Scherzo No.1 in B Minor, Op.30* and *Scherzo No.2 in B-Flat Minor, Op.31*, **Prokofiev** *Sonata No.2 in D Minor, Op.14*.

Info: events@lse.ac.uk or call 020 7955 6043.

LSE lunchtime concert



LIKE US ON FACEBOOK

FACEBOOK.COM.LSEPS



FOLLOW US ON TWITTER

@LSEPUBLICEVENTS



MARINA NADIRADZE
16 NOVEMBER



IVANA GAVRIC
30 NOVEMBER



DORA KOKAS
7 DECEMBER

Thursday 23 November, 1.05-2pm

Shaw Library, Old Building

Olga Paliy (piano)

Winner of several major scholarships and awards in Ukraine and the UK, Olga completed her postgraduate studies in Piano Performance at RNCM in 2011 with distinction and has just completed her PhD.

Programme: **Mozart** *Six Variations on "Salve tu Domine" K398*, **Debussy** *Preludes: La Fille aux Cheveux de Lin, Les Sons et les Parfums Tourment dans l'air du Soir* and *Les Collines d'Anacapri*, **Schumann** *Davidsbündlertänze Op.6*.

Info: events@lse.ac.uk or call 020 7955 6043.

LSE lunchtime concert

Thursday 30 November, 1.05-2pm

Shaw Library, Old Building

Ivana Gavric (piano)

Gavric created a sensation with her debut disc, praised by *BBC Music Magazine* as "playing of an altogether extraordinary calibre". The *Washington Post* described her playing as "impressive, insightful... a ravishing performance."

Programme: **Haydn** *Piano Sonata in F Major HXVI:23*, **Schumann** *Kreisleriana Op.16*.

Info: events@lse.ac.uk or call 020 7955 6043.

LSE lunchtime concert

Tuesday 5 December, 7-9.30pm

TICKET

St Clement Danes Church, Strand, London, WC2R 1DH

LSE Christmas Concert in association with LSESU Music Society

The LSE Choir will perform *Fantasia on Christmas Carols* by **Vaughan Williams** and *The King Shall Rejoice* by **GF Handel**.

The LSE Orchestra will perform **Matthew Taylor** *Overture "The Needles"*, **Sibelius** *Pelleas and Melisande (excerpts)*, and **Beethoven** *Symphony No.6 "Pastoral"*.

Info: Tickets cost £7 and are available at lse.ac.uk/events.

LSE Christmas concert

Thursday 7 December, 1.05-2pm

Shaw Library, Old Building

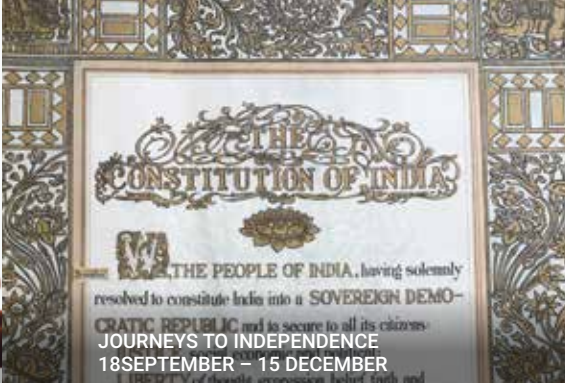
Dóra Kokas (cello)

Two masterworks of the cello repertoire, one to celebrate 50 years remembrance of Kodaly's death, will be played by this highly awarded cellist of exceptional expressive and technical powers.

Programme: **Bach** *Suite for Solo Cello in C Major BWV 1009*, **Kodaly** *Sonata for Solo Cello, Op.8*.

Info: events@lse.ac.uk or call 020 7955 6043.

LSE lunchtime concert



Exhibitions

Monday 18 September – Friday 15 December

LSE Library Gallery

Journeys to Independence: India, Pakistan and Bangladesh

This year marks the 70th anniversary of the independence of India from British rule and the birth of West and East Pakistan. Nearly 25 years later, East Pakistan became Bangladesh. This free exhibition displays some of the archives at LSE Library that give a British perspective on the Indian subcontinent during the 20th century.

Info: library.enquiries@lse.ac.uk or call 020 7955 7229. Visitors are welcome Monday-Friday 9am-7pm, Saturday-Sunday 11am-6pm. Please see lse.ac.uk/library/exhibitions for details.

LSE Library public exhibition

Monday 2 October – Friday 3 November

Atrium Gallery, Old Building

Constitutions and Law: making Pakistan

On the 70th anniversary of the creation of Pakistan, this exhibition celebrates the critical role of Quaid-i Azam M A Jinnah as lawyer and statesman.

Info: arts@lse.ac.uk or call 020 7955 6043. Visitors are welcome Monday – Friday 10am-8pm. Please see lse.ac.uk/arts for details.

LSE Arts public exhibition

Monday 6 November – Thursday 7 December

Atrium Gallery, Old Building

Law and Nationhood: India at 70

Commemorating 70 years of India's independence, this exhibition highlights the shared legal background of Gandhi, Nehru, Ambedkar and Krishna Varma.

Info: arts@lse.ac.uk or call 020 7955 6043. Visitors are welcome Monday-Friday 10am-8pm. Please see lse.ac.uk/arts for details.

LSE Arts public exhibition

EVENTS GET BUSY! WE ADVISE

YOU TO ARRIVE 20 MINUTES

EARLY TO AVOID DISAPPOINTMENT



How to get to LSE

Link to maps

lse.ac.uk/mapsAndDirections

Underground

Holborn (Central/Piccadilly)

Temple (District/Circle)

Buses

Buses that stop on or near the Aldwych are numbers: 1, 4, 6, 9, 11, 13, 15, 23, 26, 59, 68, x68, 76, 87, 91, 139, 168, 171, 172, 176, 188, 243, 341 and 521

Cycling

There is a Santander London Cycle Hire scheme docking station on Houghton Street

Parking

NCP, Parker St (off Drury Lane) WC2

Other than parking meters on Portugal Street, Sardinia Street, Sheffield Street and Lincoln's Inn Fields there is no parking available near the School.

Mailing list

If you would like to be put on the mailing list for this leaflet, please call **020 7955 6043** with your name and mailing address.

Email: events@lse.ac.uk

Mail: The London School of Economics and Political Science, Houghton Street, London WC2A 2AE

Although all possible care has been taken to ensure that the information in this leaflet is accurate, no responsibility can be taken for any errors or omissions however caused. Event details can be checked at lse.ac.uk/events

Freedom of thought and expression is essential to the pursuit, advancement and dissemination of knowledge. LSE seeks to ensure that intellectual freedom and freedom of expression within the law is secured for all our members and those we invite to the School.



LSE theatres

Hong Kong Theatre

Clement House, Aldwych

Old Theatre and Shaw Library

Old Building, Houghton Street

Peacock Theatre

Portugal Street

Sheikh Zayed Theatre and Wolfson Theatre

New Academic Building,
54 Lincoln's Inn Fields

Accessibility and special requirements

LSE aims to ensure equal access to these public events. The majority of venues are wheelchair accessible. Wheelchair spaces should be reserved in advance of the event.

The larger venues are fitted with infrared hearing support systems.

Please contact events@lse.ac.uk in advance of the event you plan to attend so that arrangements, where possible, can be made. For more information visit lse.ac.uk/events

DisabledGo have produced detailed access guides to the LSE campus and residences, and route maps between key locations. These are available at lse.ac.uk/DisabledGo

Parking for disabled badge holders

Visit the Westminster City Council website to find the nearest Blue Badge parking bays to LSE.

This information is also available on request in alternative formats.

lse.ac.uk/events



THE LONDON SCHOOL
OF ECONOMICS AND
POLITICAL SCIENCE ■

15% discount
for LSE Alumni

Executive Education Courses

Intensive programmes for visionary thinkers



Central London



30 Oct – 3 Nov 2017
4 – 15 June 2018

Five day intensive courses in

Leadership | Management | Economics | Finance | Global Public Policy



lse.ac.uk/exec



+44 (0)20 7955 6803 to speak with one of the team