

Impact

Issue 2, Autumn 2007

Newsletter for the Supporters of LSE



The Paul Woolley
Centre page 2

New programme of research at LSE to focus on **Gulf States**



LSE has a worldwide reputation for producing innovative research on contemporary global issues and making a significant contribution to the expansion of global knowledge and understanding.

Thanks to a £5.7 million pledge from the Kuwait Foundation for the Advancement of Sciences, a new research programme in the Gulf States and an endowed LSE Professorship in the Department of Economics will be established at LSE.

The Kuwait Research Programme on Development, Governance and Globalisation in the Gulf States is a ten-year multidisciplinary programme which will focus its research on such topics as globalisation, energy trading, diversification of and challenges facing resource rich economies, economic development, trade relations

between the Gulf States and major trading partners, security and migration.

The programme will be hosted in LSE's interdisciplinary Centre for the Study of Global Governance and led by Professor David Held (pictured), Co-Director of the Centre. It will also provide support for post-doctoral researchers and PhD students, develop academic networks between LSE and Gulf institutions and host regular seminar series, as well as five major biennial conferences.

The Programme is an opportunity for LSE to make a significant contribution to the foundation of knowledge about Kuwait and the Gulf States at a time when the role of this region in world affairs is more prominent and critical than ever before. Professor Held says: 'Thanks to the Kuwait Foundation for the Advancement of Science, we have a unique opportunity to broaden and deepen our knowledge about Kuwait and the Gulf States. This is a particularly important task at this time, given the instabilities of the Middle East and the complex relations of the Middle East to the wider world.'

The first holder of the Kuwait Endowed Professorship of Economics and Political Science will be Professor Tim Besley of the School's Department of Economics.

The programme will have a formal launch event in spring 2008.

For more information, please contact Simon Marsh at +44 (0)20 7955 7852 or s.marsh@lse.ac.uk



Annual Fund Hits
Record Total page 4



New Academic
Building page 6

Fellowship funded to develop international relations

A new endowed Fellowship will be established at LSE to widen and expand global knowledge in the field of International Relations, thanks to the support of the Dinam Charity.

The David Davies of Llandinam Fellowship will enable LSE to attract talented research Fellows to continue the legacy of David Davies and LSE in developing the study of international relations. In addition to a minimum of a first degree, Fellows will also be required to have direct work experience in the international field, which will help to strengthen the interaction between practitioners and academia.

Professor Christopher Coker, Head of the Department of International Relations said: 'We hope that the new Fellowship will further the Department's own contribution to the understanding of conflict and the need for greater justice and equity in international affairs. These were very much the interests of David

Davies and as a Department we are honoured to be continuing his legacy.'

Mandy Weston (BSc International Relations, 1979), Chair of the Trustees of the Dinam Charity and member of the Davies family said: 'In today's world it is of global importance that we continue to push back the boundaries of research and knowledge in the area of International Relations. David Davies of Llandinam was a man of vision and action who worked tirelessly for the enlightened organisation of relations between states. We hope that this Fellowship, established in his name, will enable individuals from diverse backgrounds and with direct experience of working in the field, to have the opportunity to study, learn and contribute to the growing body of knowledge of international relations.'

For more information, please go to: www.lse.ac.uk/Depts/intrel or contact Rachel Jones at +44 (0)20 7955 7449 or r.h.s.jones@lse.ac.uk



'As the Campaign for LSE nears its conclusion, we will be moving on to the next stage in securing the future of the School.'



From the Director

Welcome to the latest edition of Impact, our newsletter for supporters of LSE.

Thanks to our alumni and friends who have supported the vision and ambition of the School, we have been able to attract talented academics and fund research projects that will break new ground in the global knowledge of the social sciences, provide financial support for a record number of students and to develop contemporary facilities for our expanding campus.

As the first Campaign for LSE nears its conclusion, we will be moving on to the next stage in securing the future of the School. Our long term vision for the School's development is only just beginning.

LSE has always been at the forefront of research and developments in the social sciences. As we face new global issues and challenges, the School is looking to build on this tradition, challenging preconceptions, breaking through boundaries and finding solutions to tough questions.

It's an exciting time for us, but these long term ambitions will need long term investment and your continued commitment will be vital.

Your support has had an invaluable impact on the School and in this newsletter we are delighted to highlight just some of the ways in which your gifts have made a difference to LSE.

We look forward to continuing to work with you in the future.

Thank you

Howard Davies, Director, LSE

The
**Campaign
for LSE**

Paul Woolley Centre launched

The Financial Markets Group (FMG) at LSE has launched the Paul Woolley Centre for the Study of Capital Market Dysfunctionality.

The new centre has been introduced as an FMG research programme and is funded through a generous donation of £4 million by Dr Paul Woolley. Professor Dimitri Vayanos, Professor of Finance at LSE, will be the Centre's Director.

The Centre will focus on understanding the workings of capital markets and the social efficiency of allocations these markets achieve. Its work-programme allows scope for a wide variety of activities, including the publication of a dedicated working paper series, conferences and seminars, a visitors programme and scholarships.

Dr Paul Woolley's career has spanned the private sector, academia and policy-oriented institutions. He has worked at the International Monetary Fund in Washington and as a Director of the merchant bank Baring Brothers. For the past 20 years he has run the European arm of GMO, the global fund management business based in Boston.

Dr Paul Woolley is Chairman of the Advisory Board for the Centre and will be a full time member of the research team: 'I am thrilled to have been able to establish the Centre here at LSE with such a talented team. I believe the Centre's research into the social efficiency of capital markets will deliver ground-breaking results at the theoretical, empirical and policy level.'

Howard Davies, Director of LSE and a member of The Paul Woolley Centre's Advisory Board, said: 'We are very grateful to Paul Woolley for his generous and public-spirited support for this important research. The output will attract a lot of interest from financial market participants and regulators.'



Dr Paul Woolley and Professor Dimitri Vayanos, Director of the Paul Woolley Centre for the Study of Capital Market Dysfunctionality

Unlocking the **CND Archives** at LSE



LSE Archives will be working with the Campaign for Nuclear Disarmament (CND) to mark CND's 50th anniversary in style, thanks to a gift of £20,000 from the Nuclear Education Trust.

LSE Archives will bring together CND's administrative archives, already deposited routinely at LSE since 1971, with a recently unearthed treasure trove of CND posters, photographs and campaigning materials.

The archive will be catalogued and

a selection of the materials will be digitised and displayed online in order to make the collection more accessible to researchers, the wider community at LSE and the general public.

LSE Archives, which are popular among academic and public users and which have some of the longest opening hours in central London, are leading the way in unlocking the records of individuals and organisations.

This support will enable an archivist based at LSE to work with CND staff and volunteers to use these materials to form the basis of a new touring exhibition, telling the story of CND from its origins in the aftermath of the Second World War to the present day. The exhibition will be displayed at CND's high profile 50th anniversary events, kicking off in February 2008 with a Global Summit on Disarmament hosted at City Hall in London,

continuing with an Easter gathering at Aldermaston and a rock concert in summer.

The exhibition will also be accompanied by an information leaflet and 'tool kit' to encourage local and specialist CND groups to collate and produce their own materials to accompany the national story. All materials will also be available online.

The touring exhibition is just the first stage in the broader cataloguing and archive project which will take up to two years. Additional funding is currently being sought for the archival work and the production of educational resources for schools and the general public.

Kate Hudson, Chair of CND, said: 'CND is delighted to be marking its 50th anniversary in this way and is grateful to the Nuclear Education Trust for supporting this innovative partnership. Telling the story of CND from its origins to the present day reinforces the relevance and diversity of the movement. This project will unlock our archival resources and open up our history to researchers and the general public bringing CND's story into the academic and public limelight.'

Sue Donnelly, Head of LSE Archives, believes that this project will enable an increased public understanding and awareness of CND: 'The support of the Nuclear Education Trust will enable us to encourage greater understanding of CND and its roles within the UK and internationally over the past 50 years and to spread the message about LSE Archives and our extraordinary collections. We are delighted to be able to house the expanded CND archives alongside the records of organisations including the British section of the Women's International League for Peace and Freedom and, from spring 2008, of the European Nuclear Disarmament Movement.'

For more information, please contact Felicity Jones at +44 (0)20 7955 7451 or f.jones@lse.ac.uk

Griffins Society celebrates successful partnership with LSE

In September, LSE celebrated its innovative partnership with The Griffins Society and the ongoing impact of their work at an event in the Shaw Library on campus. Helena Kennedy QC and Howard Davies spoke at the event, which also marked the launch of *Ladies of Lost Causes – rehabilitation, women offenders and the voluntary sector*, a new book by LSE academic Judith Rungby, which details the history of The Griffins Society and its achievements.

Formed in 1966, The Griffins Society is a voluntary organisation that works to support women through the criminal justice system. Since 2001 it has supported a Visiting Research Fellowship Programme at LSE. The Fellowship is unique as it enables practitioners to take time out to study a particular aspect of the circumstances or treatment of women offenders with academic support and supervision provided by the School.

The Programme has proven to be very successful and is making a real practical impact on the work of

policy makers and senior practitioners. As a result, LSE is delighted that the Society has recently made a commitment to the future of the partnership, based in the Mannheim Centre for Criminology from 2007.

Following the findings and recommendations of the 2007 Fellow Louise Clark, HM Prison Service have awarded further funding to develop a prison-based information and support network for imprisoned street sex workers and to deliver training to improve prison staff awareness of this group's resettlement needs.

Louise says: 'The opportunity to do Fellowship research on this topic has enabled us to identify the relevant issues and what we need to do about them. The commitment from the Griffins to develop Fellows' research into reality reflects their dedication to influencing positive change in the world of criminal justice.'

For more information, please contact Simon Marsh at +44 (0)20 7955 7852 or s.marsh@lse.ac.uk



Griffins Society volunteers at the recent event

Annual Fund hits record total

Thanks to the support of alumni and friends, the Annual Fund has had its most successful year to date.

Every single gift has made a difference as collectively, over £600,000 in unrestricted gifts has been received from over 2,800 alumni, parents, friends, governors and staff; a 20 per cent increase on last year's total.

These unrestricted funds will be allocated in December by the Annual Fund Allocation Advisory Group, supporting a diverse range of projects which will have an immediate and positive impact on everyday life at the School.

Information about the awards made will be available online at www.lse.ac.uk/annualfund

Our innovative annual giving programmes have grown to the extent that over four per cent of our global community now support the Annual Fund, a leading participation rate amongst UK Universities.

Thank you to everyone who supports the Annual Fund. In offering your support, you have not only invested in LSE today, but in its future, enabling current and future students to get the most out of the experience of studying at LSE.

For more information on supporting the Annual Fund, please go to: www.lse.ac.uk/annualfund or contact Laura Harvey at +44 (0)20 7955 6764 or l.j.harvey@lse.ac.uk

Chairman's Circle

In the last year, the Annual Fund has seen a rapid growth in the number of leadership level gifts, with the Chairman's Circle nearly doubling in size to over 38 members.

Alumni, parents, staff and friends who make gifts of £5,000 and above to the Annual Fund each financial year become members of the Chairman's Circle. This year, members represent nine countries worldwide; USA, Hong Kong, Japan, Singapore, United Arab Emirates, France, Switzerland, Germany and of course the UK.

The second Annual Fund Chairman's Circle dinner was held at the School on 30 May in the Chairman's and Director's Dining Rooms and gave the Chairman of the Court of Governors, Lord Grabiner of Aldwych QC an opportunity to thank members for their generosity and support on behalf of the School.

For more information on how to join the Chairman's Circle, please contact Laura Harvey at +44 (0)20 7955 6764 or l.j.harvey@lse.ac.uk



Friends and Family programme

LSE does not only make a difference to the lives of students. It also impacts the lives of their parents and guardians who will support them throughout their time at the School.

Therefore, the Friends and Family Programme aims to engage the parents and guardians of our students, by offering them a full orientation, newsletters, networking events and a handbook of useful contacts and information.

The Programme has doubled in size since it was established in 2001 and the second Friends and Family Orientation Programme in September saw over 350 parents and guardians arrive on campus for a varied programme of activities. These included a welcome reception at the home of alumna Naomi Hass-Perlman (LLB 1976), tours of the School, an academic panel discussion, a drinks reception with Howard Davies and a talk on student finances from LSE alumnus and TV money-saving expert Martin Lewis (BSc (Econ) Government and Law 1994).

Friends and Family members are also lending their philanthropic support to the School, through a number of projects on campus. Thanks to their generosity, the Students Union Quad has already been refurbished and by December this year members are looking to raise £125,000 to name a social space in the New Academic Building.

Paolo Pessoa de Araujo, Chairman of the Programme and parent of two LSE undergraduates students said: 'I am delighted by the overwhelming support of the Friends and Family Programme. It was excellent to see so many parents and guardians on campus to welcome them to LSE and to encourage them to become actively involved in the LSE community.'

For more information on the Friends and Family Programme please contact Catherine Walsh at +44 (0)20 7107 5276 or c.e.walsh@lse.ac.uk



Supporting students at LSE



The Annual Donors and Scholars Reception was held in May this year, giving both scholars and the School the opportunity to thank donors and to celebrate the impact of scholarship support on the lives of students.

Thanks to the support of alumni and friends, last year alone the LSE was able to award more than £9 million of financial assistance to students, of which £1.8 million came from private support.

Alumnus Bill Bottriell (BSc Economics 1978) also spoke about his experiences as a scholarship donor and the phenomenal growth and success of the LSE scholarship programme. He then announced a surprise match-giving challenge – if five more scholarships were supported that evening, Bill himself would support an additional five. Four additional donors did offer their support for five scholarships; Merrill Lynch, Kasim Kutay (BSc Economics 1986, MScEC International Relations 1987), The McQuitty Charitable Trust and an anonymous donor. This support will make a significant difference to the lives of students.

During the evening, guests also heard from four current scholarship recipients, who spoke of the impact that scholarship support has had on their lives and their time at LSE. PJD Wiles scholar Dalia

Ghanem, Egypt, said: 'At LSE, I have been exposed to state-of-the art research in econometrics, and it has been a great opportunity to be part of such a vibrant academic environment.

'Education is the best asset anyone can have and the best means of empowering all of us to give back to our countries and to our world. I cannot express my gratitude for selecting me for this scholarship and providing me with the opportunity to fulfil my dream.'

For more information about supporting scholarships at LSE, please contact Gemma Wicks at +44 (0)20 7955 6370 or g.wicks@lse.ac.uk

Clockwise from the top: Pauline Avigès-Graham and her scholars; Alan Elias and Andrew Harris; Jane Ashley and Aude Michelet

'Thanks to the private support of alumni and friends, last year alone LSE was able to award more than £1.8 million of financial assistance to students'

New Academic Building



The New Academic Building is on schedule to be in full operation and occupation by October 2008.

In September, supporters of the New Academic Building were invited to attend the building's Topping Out Ceremony. This traditional ceremony was conducted by Chairman of the Court of Governors, Lord Grabiner (pictured), to symbolise the fact that the highest point of construction has now been reached.

The event brought together construction and project staff with donors and supporters and LSE senior management.

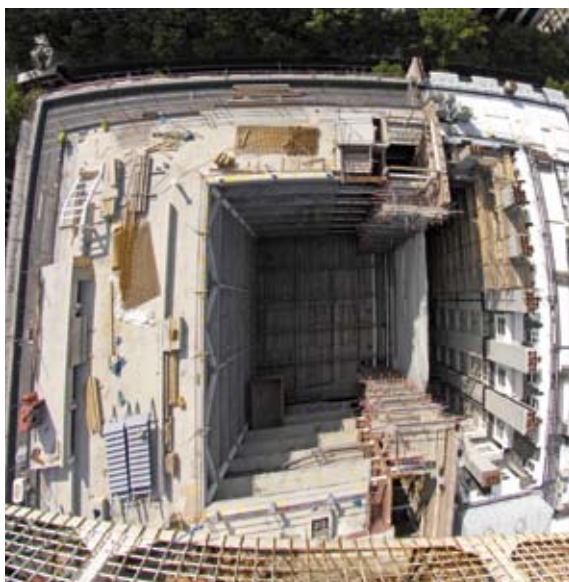
Thanks to the support of alumni and friends, the New Academic Building is set to transform the LSE campus. £6 million has been raised towards the £10 million fundraising target for the New Academic Building. This includes recent pledges of £250,000 from the Garfield Weston Foundation and a parent.

The parent of a first year LSE undergraduate economics student, gave the gift in honour of his mother. To commemorate this generous gift, a floor in the new building will be named for her.

For more information on the New Academic Building, please contact Rachel Jones at +44 (0)20 7955 7449 or r.h.s.jones@lse.ac.uk

NAB Key facts:

- Four lecture theatres including one 400-seater
- 16 seminar rooms and two IT training rooms teaching rooms
- Central atrium, café and retail spaces on ground floor
- Internet café and quiet study areas
- Five floors of academic department accommodation
- Roof top pavilion with servery, four executive meeting rooms and terrace
- Ground water cooling to lecture theatres



Alumni advising on North America

The commitment and expertise of leading US and Canadian LSE alumni are helping to further the vision, position and ambition of the School in North America.

The recently formed North American Advisory Board (NAAB) is providing the School with a structured approach to obtaining advice from its leading alumni in the US and Canada on developing the relationship between LSE and the region.

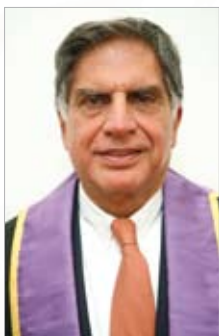
The Board is made up of 29 alumni and friends in North America and is chaired by Alan MacDonald (MSc Economics 1968). The inaugural meeting of the NAAB took place in September in New York City. Director Howard Davies and Pro-Director, Sarah Worthington gave the board an overview of the School's strategic plan and international strategy. Following discussions included the profile and positioning of LSE in North America and ways of developing philanthropic efforts in the US.

For more information about supporting the School from the US and Canada, please go to www.lse.ac.uk/collections/LSEFoundationAndCentennialFund or contact Sue Marks on 001 212 433 1115 or s.r.marks@lse.ac.uk

NAAB members:

Raph Appadoo (BSc Economics 1973)	Firoz Lalji (BSc Economics 1969)
Geoffrey Bell (BSc Economics 1961)	Terrence LaPier (PhD Economic History 1996)
Jeffrey Berg	Deborah Lehr (General Course 1985)
Richard Caruso (PhD Industrial Relations 1990)	Alan MacDonald (MSc Economics 1968)
Andrew Crowell (BSc Economics 1988)	J Patrick Michaels (General Course 1965)
Leon Desbrow (BSc Economics and Sociology 1967)	Sheila Penrose (BSc Economics 1972, MSc Economics 1974)
Christine Downton (PhD Economics 1969)	Gary Perlin (MSc Economics 1974)
Bill Duhamel (BSc Economic History 1982)	John Phelan (General Course 1985)
Howell Ferguson (LLM 1978)	Donald Roth (MSc Economics 1970, MPhil Economics 1974)
Simon Glover (BSc Economics 1980)	Kenneth Rotman (General Course 1987, MSc International Relations 1989)
Richard Goeltz (General Course 1963)	Robert E Rubin (General Course 1961)
Warren Goldring (CBA 1953)	L E Simmons (General Course 1970)
Jeffrey Goldstein (General Course 1976)	George Soros (BSc Philosophy 1951, PhD Philosophy 1954)
David Heleniak (MSc Economics 1969)	Paul Volcker (BSc Economics 1973)
John Kerr (BSc Economic History 1971)	

Tata family continue their tradition of support at LSE



The Tata Group and its Foundations have been highly valued partners of LSE over the last 95 years. Their continued commitment to the School has supported students, developed LSE's global links and funded wide-ranging and contemporary research and talented academics.

In 1912, a gift from the Ratan Tata Foundation supported Beatrice and Sidney Webb in setting up the Centre for the Study of Social Sciences at the School, which is now the Department of Social Policy. This support was renewed in 1996 to create the Sir Ratan Tata post-doctoral Fellowship, which focuses on research on contemporary social and economic concerns of South Asia, including poverty, human development, economy and environment. The Fellowship has just celebrated its tenth anniversary.

Support from the Tata Group and its Foundations has also enabled LSE to develop its global research links. In July this year, the Jamsetji Tata Trust pledged £1.8 million to establish a collaborative academic alliance between LSE and the Tata Institute of Social Sciences. This will enable collaborative research in areas of mutual interest including issues of development

studies, health, global civil society, urban planning and local governance.

This partnership includes support for a Senior Research Fellow, based in LSE Health and the Jamsetji Tata Fellow, based in the Development Studies Institute (DESTIN). Both research fellows will work closely with colleagues in the India Observatory.

The continued commitment of the Tata Group and Foundations has most recently seen a donation from the Sir Ratan Tata Trust enabling international students to study at the School. This October, five KR Narayanan-Tata graduate scholars from India will commence their studies at LSE. Director Howard Davies says: 'LSE's connection with the Tata family and group of companies goes back almost a hundred years. But it is as close and important to us as ever. The latest scholarship pledge is a very valuable strengthening of our ability to attract top Indian students to the School. We are most grateful.'

In July 2007, Sir Ratan Tata was named an honorary fellow of LSE for his achievements in the fields of entrepreneurship, industrial leadership, building up the knowledge economy in India and, in the larger international context, his work for charity and his humanity.

For more information, please contact Simon Marsh at +44 (0)20 7955 7852 or s.marsh@lse.ac.uk

Legacy of giving at LSE

Alumni and friends are continuing to show a remarkable commitment to the School's Legacy Programme. Over 100 alumni and friends have now chosen to join our LSE Legacy Circle by confirming their intention in writing to remember the School in their Wills. Since the Campaign for LSE began, the total impact of the Legacy Programme including received bequests and face value intended pledges is now almost £13 million.

The School took the opportunity to personally thank supporters for this remarkable commitment at the annual Legacy Futures Lunch in the Shaw Library. Alumni, staff and friends met to celebrate the legacy programme and to highlight the impact of legacy support at LSE.

During the afternoon, guests heard from Margaret Bennett scholar Nanfuka Kasule (LLM 2007) and Emma Cardwell (BSc Environmental Policy student), two current scholarship students whose scholarships were established with a legacy gift. Emma, a Bence Legacy scholar said: 'This scholarship has really changed my life. I hope and intend to work toward having the ability to look back on my life and career and say that I have achieved something actual, something concrete that has made this world a better place for people to live in. The driving force behind this will always be my debt to Peter Bence,

my gratitude for his foresight and generosity and the School's faith that I am a worthy recipient of it.'

Retired member of staff, Professor Derek Diamond and LSE's Secretary and Director of Administration, Adrian Hall spoke of their experiences as members of the Legacy Circle and the impact that legacy giving has on the School.

For more information on legacy giving please contact Rosie Woodward on +44 (0)20 7955 7376 or at r.c.woodward@lse.ac.uk

Professor Derek Diamond with scholars Emma Cardwell and Nanfuka Kasule



LSE hosts its first Black Achievement Conference



In October, LSE hosted 'Black to the Future', its first Black Achievement Conference for students of African and Caribbean heritage.

Sponsored by Morgan Stanley, the aim of the conference was to encourage young African-Caribbean students to continue to aim high, celebrate past achievements and involve parents in the decision making process.

It successfully brought together young people aged 14-16, parents, teachers, family members and advisors to explore different aspects of black Caribbean history and to help students and their families plan for the future by giving them a taste of higher education.

The conference included a mix of talks and workshops including contributions from Carl Case, Diversity Consultant; Lee Jasper, Director of Diversity and Policing in the Mayor's Office; Stephen Brooks,

National 'Black Boys Can' Association; and Levi Roots, founder of Reggae Reggae Sauce and participant on the BBC's *Dragon's Den*.

Abbas Jaffer, Executive Director, Diversity, EMEA of Morgan Stanley said: 'We are delighted to be involved in the first Black Achievement Conference at LSE. We hope that the conference has inspired these talented students to set high educational ambitions and enabled them to discover some of the opportunities and experiences that higher education can offer.'

The Black Achievement Conference is part of the School's Widening Participation Programme, which aims to encourage students from under-represented backgrounds to discover new opportunities and fulfil their potential.

For more information, please contact Bill Abraham on +44 (0)20 7955 7378 or b.abraham@lse.ac.uk

Houghton Street Online – www.alumni.lse.ac.uk



As part of our community of alumni and friends, we are delighted to invite you to join Houghton Street Online, our new web-based community.

Houghton Street Online will give you your own personal LSE space. It will allow you to catch up with old friends and stay in touch with the School and the worldwide LSE community at the click of a mouse.

You will also have access to a number of worldwide LSE affinity groups. These include international alumni groups, special interest groups, and groups for supporters of the School.

You will be able to see our extensive international events and reunions calendar and we are also introducing a secure booking and payment facility.

How to sign up

- If you are an alumnus, just go to www.alumni.lse.ac.uk and follow the instructions.
- If you are a friend of the School and would like to sign-up to Houghton Street Online, please contact Gemma Wicks at +44 (0)20 7955 6370 or g.wicks@lse.ac.uk for information on how to register.

For more information on any of the projects featured in this newsletter, please contact Gemma Wicks in the Office of Development and Alumni Relations on +44 (0)20 7955 6370 or g.wicks@lse.ac.uk



Printed on 100% recycled stock