



The LSE  
Annual  
Fund

**LSE**

THE LONDON SCHOOL  
OF ECONOMICS AND  
POLITICAL SCIENCE

# LSE Annual Fund report to donors 2009-10





# Contents

Chairman's message **1**

## The impact of your gift

Promoting academic excellence **2**

Enhancing the student experience **4**

Engaging the wider world **6**

Creating sustainable facilities and a world class campus environment **8**

Attracting the brightest and the best **10**

## Our donors

Recognising our donors **12**

Leadership giving **13**

Chairman's Circle **14**

Director's Circle **15**

Clement's Circle **16**

Houghton Street Circle **17**

Beaver's Club **18**

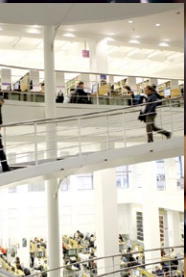
Other Annual Fund donors **20**

Penguin Club **22**

## Reaching our community

Annual Fund campaigns **24**





*I would like to thank the 2,944 alumni and friends who chose to make a donation to the Annual Fund during the last financial year. This report highlights the impact that your gifts to the Annual Fund have made across our campus and throughout the LSE community.*

*In tough financial times, philanthropic gifts enable us to maintain a sense of momentum and improvement at the School. The generous donations that we receive towards the Annual Fund are vital in helping us to enrich the student experience, enhance research and improve facilities. We hope that you will continue to support the School through the Annual Fund and help us to continue this good work.*

*Thank you, once more, for your support.*

**Howard Davies**, LSE Director



## Chairman's message



It was a real honour to be invited to be the new Chairman of the Annual Fund, and I hope that I can continue the excellent work that Mike Lickiss started ten years ago. Through his leadership and continued support, Mike has grown the Annual Fund by over 600 per cent in revenue, and because of this we have seen the Annual Fund have a massive impact on campus. Thank you, Mike, for all of your efforts – I have some large shoes to fill.

Because gifts made to the Annual Fund are unrestricted, your donation can be used across campus ensuring that projects that would not otherwise receive funding and School priorities are supported. This makes them one of the most valuable kinds of donation. In a time of economic uncertainty, it is such a pleasure to see that so many alumni, students, parents, staff, and friends of LSE choose to continue their support of the School.

This donor report aims to recognise all of those who have contributed to the Annual Fund in the last financial year and to show how your gift has made a difference to the School. This year we have listed all donors to the Annual Fund alongside Gift Club members, who have been listed in previous years. This is to recognise the value of each and every gift made to the Annual Fund. We have also tried to give you a flavour of the areas and projects supported in the 2008-09 financial year, and hope that you will enjoy reading about the real impact of your support on campus.

By donating to the Annual Fund, you have made an investment in the future of the School. With your ongoing support, the Annual Fund can continue to promote academic excellence, attract the best and the brightest, create sustainable and world class campus facilities, enhance the student experience, and help LSE continue to engage with the wider world.

Thank you for helping the School achieve so much by choosing to donate to the Annual Fund. I hope that you will continue to invest in LSE's future.

(BSc Statistics 1964)

Chairman of the Annual Fund, Director's Circle member



# Promoting academic excellence

In 2009-10 the Annual Fund awarded **£127,183** to teaching and research projects aimed at promoting academic excellence at LSE.

Teaching and research are fundamental to LSE's standing as one of the foremost social sciences universities in the world and this continues to be reflected by the projects supported by the Annual Fund, both through awards made in 2009-10 and previously.

Throughout its 115-year history, LSE has played a leadership role in developing and advancing the study and application of key academic disciplines, amongst others, international relations, social policy, sociology, social psychology and criminology. By bringing together students and academic staff with radically differing experiences, views and beliefs, ideas formulated at the School have gone on to positively impact society around the world.

LSE offers a wide range of degree courses in the social sciences at the undergraduate and postgraduate levels. Although LSE is ranked among the top social sciences universities in the world, the School is not complacent about the quality of its teaching. Following a review by an internal Teaching Taskforce in 2008, LSE committed to spending an extra £2 million a year to ensure that its teaching remains of the highest standard and has introduced LSE100 into its undergraduate teaching programme, an innovative new course for first year students which aims to deliver a stringent intellectual grounding across academic disciplines.

Research also continues to play a pivotal role within LSE. The 2008 Research Assessment Exercise confirmed the School as an internationally leading research university, with the highest percentage of world-leading research of any university in the UK. Individual subject areas, notably economics, law, social policy and European studies, topped national tables of excellence.

Impact



“By bringing together students and academic staff with radically differing experiences, views and beliefs, ideas formulated at the School have gone on to positively impact society around the world.”





## STICERD/Annual Fund New Researcher Awards

Annual Fund award: **£40,000**

The STICERD/Annual Fund New Researcher Awards support young researchers across the School, presenting early-career academics with the opportunity to focus on original and independent research and forming an important stepping-stone for future career development.

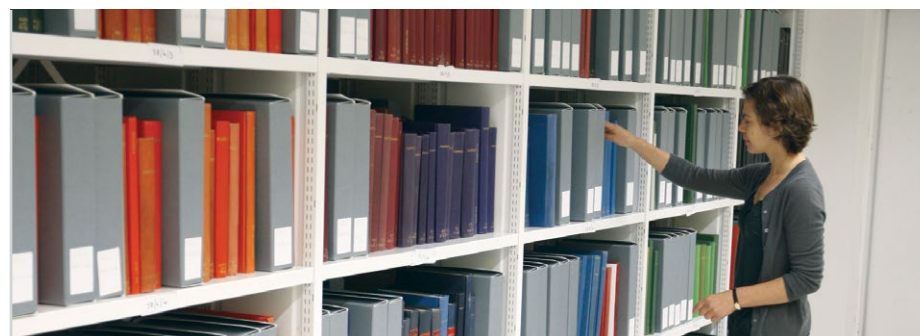
One such researcher is Dr Hyun Bang Shin of the Department of Geography and Environment, who was awarded £20,000 in December 2009 to help fund his research project entitled: 'Social Legacy of Mega-Events; the case of 2010 Guangzhou Asian Games in China'. The key aim was to investigate the impact of mega-event preparation upon the livelihoods of rural-to-urban migrant workers and poor local residents who lived in areas earmarked for demolition to make way for stadia and other facilities associated with the Games.

The support of the Annual Fund was critical in enabling this original piece of research to be undertaken, involving field visits to Guangzhou, questionnaires encompassing three neighbourhoods, and qualitative in-depth interviews with local residents, local government officials, planners and academic experts.

The data collected from this research project is expected to provide a rich contextual understanding of how the Games are experienced by a city. It is also envisaged that the project will establish a solid platform upon which a comparative project can be developed to examine any contrast in the experiences of hosting mega-events in the Global North and South, including the 2012 London Olympic Games.

### STICERD

Suntory and Toyota International Centres  
for Economics and Related Disciplines



## A History of Thought at LSE: Historical Theses

Annual Fund award: **£10,700**

The Historical Theses project, once complete, will provide a remarkable online resource that charts the development of thought throughout LSE's history. With an aim to digitise around 150 PhD theses from the School's Library holdings, the digitised collection will significantly add to the record of contemporary LSE thought currently captured by the Library's online resources, as well as adding a historical dimension to them. The project to digitise these key works spans the range of the School's academic departments, who have each been asked to nominate between five and ten LSE or University of London awarded PhD theses that they feel have significantly contributed to their field. The departments have also been asked to provide a narrative that explains their selection in the context of the development of their subject area at the School. Demand for access to LSE theses from both internal and external sources is consistently high, with an average of over 40 access requests per week over the 2008-09 academic year. The resource will further enhance open access to selected works for staff, students, alumni and the wider public. With a first round of theses digitised over the summer, a second round of nominations will open shortly and it is hoped the project will be completed early in the 2010-11 academic year.

### Awards breakdown

Two-Year Fellowship for an International Scholar At Risk **£41,900**

STICERD/Annual Fund New Researcher Awards **£40,000**

Junior Research Fellowship for an African scholar – LSE African Initiative **£11,878**

European Institute lunchtime seminar series **£10,000**

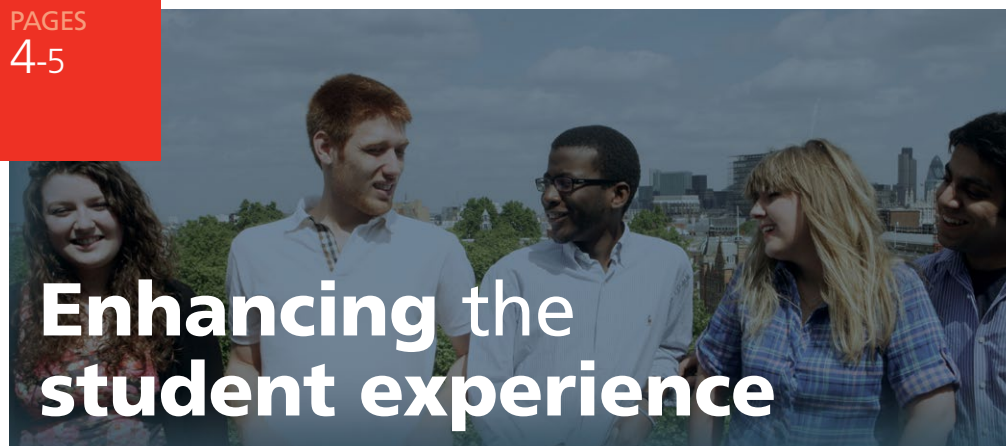
Anthropology Outreach: Initiative in application-orientated learning **£8,170**

The Renewal of the Seligman Library **£4,535**

A History of Thought at LSE: Historical Theses **£10,700**







## Enhancing the student experience

In 2009-10 the Annual Fund awarded **£124,280** to the projects which will directly enhance the student experience, including the development of the New Students' Centre and support towards the activities of LSESU's student societies.

The experience that LSE provides to its students extends far beyond the classroom. The unique make up of LSE's student population, exemplified by the 50:50 split between undergraduate and postgraduate and one of the most culturally diverse student bodies in the world, means that the Students' Union and its 220 or more societies are very important to the experience of students whilst they are studying at LSE. Societies help to enhance the cultural, political and social side to life at LSE, and make an enormous contribution towards enabling students to forge lifelong relationships and explore and develop new interests.

The Annual Fund has a long history of supporting the Students' Union, its associated student societies and other student-led initiatives, funding equipment, events and projects that add to the rich cultural experience expected at LSE. This year the Annual Fund has supported the creation of a number of new societies including the LSESU Kitesurfing/ Wakeboard Club and the LSESU Surf Club, as well as providing funding to the LSESU's student newspaper, *The Beaver*.

The School has recently taken the decision to improve the facilities available for extra-curricular activities through the development of the New Students' Centre. The redevelopment forms the next phase of LSE's programme of campus regeneration following on from the construction of LSE's world famous library, and the New Academic Building. The new building once complete will bring together for the first time a wide range of student resources from around the campus into one building.

## St Phillips' Redevelopment – New Students' Centre

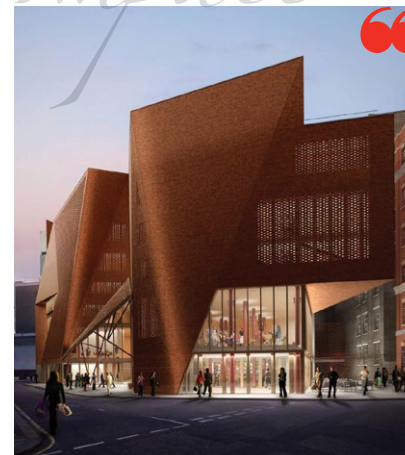
Annual Fund award: **£100,000**

The New Students' Centre, will be located where the St Philips buildings currently stand. Once completed in 2013, the New Students' Centre will accommodate LSESU facilities, including their well-used Student Advice and Representation Centre; improved facilities for the School's student media; offices, meeting rooms and spaces for student societies; a pub; and a large event space. It will bring together for the first time student services which are currently found in wide-spread locations around the campus, including the LSE Careers Service, the gym and the interfaith prayer centre.

LSE is working closely with LSESU to ensure that the New Students' Centre meets expectations and provides a world class facility for students to use and enjoy during their time at LSE. The regeneration of the St Philips buildings is the latest major piece of campus redevelopment, following on from the creation of the School's world renowned library and, more recently, the New Academic Building which provides state-of-the-art teaching and learning spaces for students and staff.

With an inclusive design aimed at providing a central point of convergence for students, it is hoped that the Centre will significantly enhance the student experience. Sustainability is also a key factor in the redevelopment, with the School aiming for a BREEAM (Building Research Establishment Environmental Assessment Method) rating of 'Outstanding', which would make the New Students' Centre the most environmentally friendly building on the campus.

*Impact*



*LSESU welcomes the New Students' Centre as an important development that will ensure that students welfare services are delivered to the same high standards, providing an environment that reflects both the School and LSESU's commitment to the experience that it provides for its student body.*

**Charlotte Gerada**, general secretary of the LSE Students' Union (2010-11)







## LSE Model United Nations Conference

Annual Fund award: **£9,165**

In 2009-10 the Annual Fund enabled students to organise and host the LSE Model United Nations Conference. The conference allowed students to work with different universities from around the world in organising and hosting this event, which involved 100 delegates.

Representing six committees from the UN, delegates debated and set policy in real time on the war in Afghanistan. Scenarios included delegates simulating an escalating student protest against the Afghan government that resulted in the destabilisation of the state and an attempted coup; and an American hostage rescue mission into Pakistan that resulted in increasingly strained relations between the US and Pakistan. The result saw the United Nations take on a more assertive role, debating the possibility of placing peacekeepers along the Afghan-Pakistan border.

Edmund Nicholson, an undergraduate studying in the Department of International History, who organised the conference on behalf of the United Nations Society said: 'It was an exciting, fast-paced conference. For my part, one of my goals was to reflect as accurately as possible the incredible challenges and complexity faced by policy makers with respect to Afghanistan – it is a much-misunderstood region and I had hoped to remedy this among delegates. I believe that in that we were extremely successful, and that delegates were placed in a position where they were forced to act in a way that real policy makers would have to, complete with all the difficulties and frustrations that the real world can create. It wasn't an easy conference, but I think it was a very rewarding one.'

### Awards breakdown

St Philips' Redevelopment – New Students' Centre **£100,000**

*The Beaver* – 60th Anniversary Distribution and IT **£2,305**

LSE Kitesurfing/Wakeboard Club **£2,000**

LSESU Surf Club **£1,000**

LSESU Yoga Club **£1,000**

LSE Model United Nations Conference **£9,165**

LSESU LGBT Society: LSE Pride **£550**

Drama Society – microphones **£1,000**

China Development Forum 2010 – China: A Changing Role **£7,260**



# Engaging the wider world

In 2009-10 the Annual Fund awarded **£177,880** to projects that assisted the School's goal to engage with the wider community.

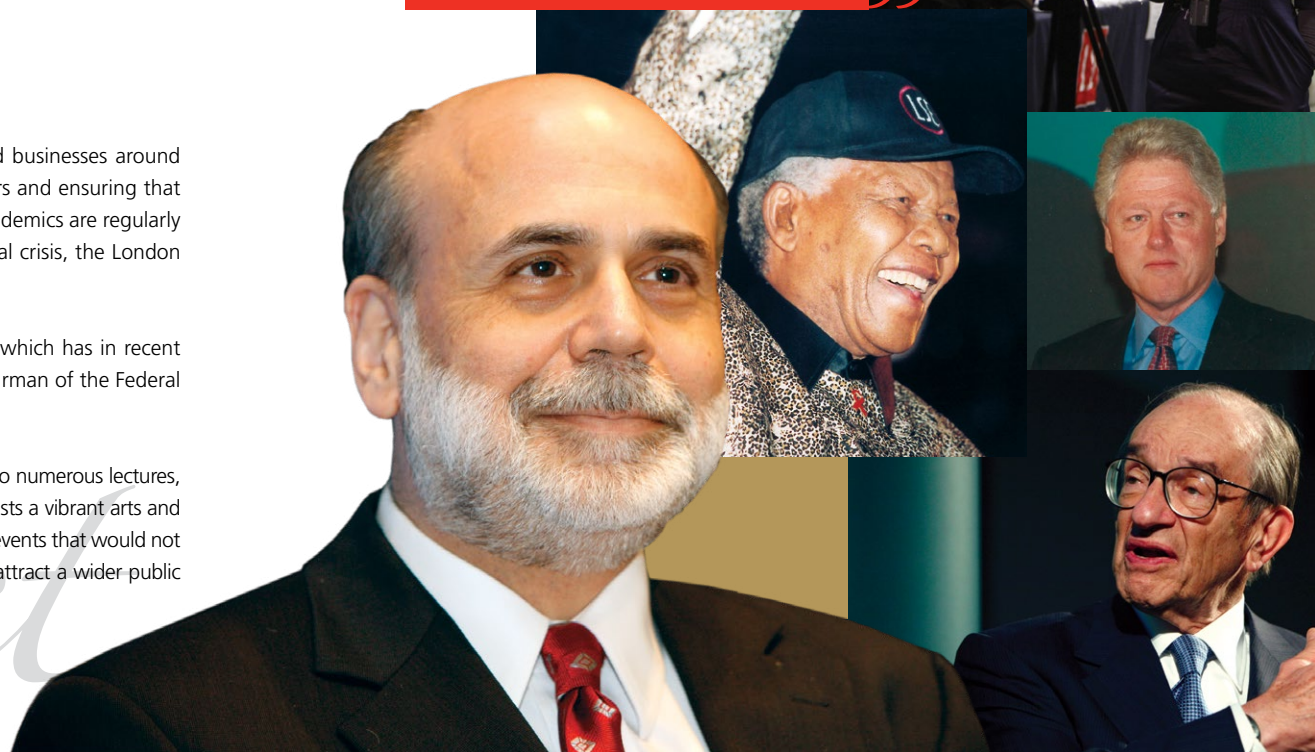
LSE seeks to engage with the wider community through a diverse range of activities.

LSE academics advise policymakers in governments, non-governmental organisations and businesses around the world. Many LSE academics maintain a high media profile, influencing opinion-formers and ensuring that the insights from cutting-edge research undertaken at LSE feed into public debates. LSE academics are regularly quoted in the media with extensive mentions around debates including the global financial crisis, the London Mayoral elections and the American presidential election.

The School's influence is also extended through its prestigious public events programme, which has in recent years attracted speakers such as Nelson Mandela, Bill Clinton, Alan Greenspan, former chairman of the Federal Reserve Board, and Dr Ben S Bernanke, chair of the US Federal Reserve.

Reflecting the broad student and alumni community at LSE, the Annual Fund has contributed to numerous lectures, conferences, collections and festivals, and this year has been no exception. The School also boasts a vibrant arts and literary programme which the Annual Fund has helped to fund this year, enabling activities and events that would not normally receive funding to help broaden the student experience at LSE as well as helping to attract a wider public audience to visit LSE.

*The School's influence is also extended through its prestigious public events programme, which has in recent years attracted speakers such as Nelson Mandela, Bill Clinton, Alan Greenspan and Ben Bernanke.*





## Africa Talks: LSE African Initiative Events Series 2010-11

Annual Fund award: **£28,000**

In 2009-10 the Annual Fund provided funding to the Africa Talks events series, a series of high profile events that will be part of the LSE public lectures programme and act as the public face of the LSE African Initiative.

The African Initiative was launched in October 2009 with the appointment of Professor Thandika Mkandawire, LSE's first Chair in African Development. The LSE African Initiative will engage with African institutions and talent to develop connections, encourage accessibility and promote knowledge exchange. This long-term mutual collaboration will inspire and support generations of students and scholars who will themselves affect global change.

The event series encapsulates the distinctive nature of LSE's African Initiative in creating a platform for African voices to inform and transform the global debate. Speakers from

across the world, and particularly African scholars and leaders, will be invited to focus on issues relating to Africa and the world. The events series both provides a public platform for this re-framing of the global debate, and brings these speakers into LSE's academic and student communities to galvanise and strengthen the cross-disciplinary study and discussion of these issues.

There will be 15 events held in total between January 2010 and June 2011. Events already held include a roundtable discussion entitled 'Africa and the World' with participants: Professor Mkandawire, Professor Michael Chege, Professor Fantu Cheru, and Dr Chris Alden, and a panel discussion entitled 'The Niger Delta: Confronting the Crisis'. All events have been greatly received and the School looks forward to hosting the remaining events in this interesting series.

## LSESU Pakistan week

Annual Fund award: **£3,140**

In 2009-10 the Annual Fund supported the Pakistan Society to host a one week festival in February for all students and staff at LSE to celebrate Pakistani culture, the first of its kind at any university in the UK.

Hassaan Naqi, an undergraduate studying Accounting and the treasurer for the Pakistan Society, said: 'By having a week long festival, the Pakistan society hoped to shed light on a Pakistan different from the one ordinarily portrayed: to show a nation with a heritage as colourful as the buses that roam its streets; where Buddha once taught and Taxila shimmered as a centre of civilisation; where the deserts of Cholistan in the south meld into the snow-capped peaks of the north – a nation whose people are as vibrant as the mangoes they consume.'

The event was very successful and brought vibrancy to Houghton Street during the gloomy London winter. Throughout the week, there were a series of events, and highlights included a Bhangra run through Houghton Street (traditional dance), a Ghazal Night with traditional music, traditional food available on Houghton Street, an indoor cricket match, various public lectures and a concluding party hosted at the Hilton Hotel Olympia.



### Awards breakdown

Library Project to archive the George Bernard Shaw Photographic Collection **£88,384**

Africa Talks: LSE African Initiative events series 2010-11 **£28,000**

International Peace and Security in Latin America public events series **£19,000**

Why social justice matters: The life and thought of Brian Berry **£7,500**

Official launch of the London transitional justice network at LSE **£5,000**

Health community and development special session on global mental health: Securing the mental health of marginalised communities **£4,717**

LSESU Pakistan week **£3,140**

Arjun Appadurai lecture and seminar **£300**

Department of Media and Communications student photography competition **£1,400**

LSE Space for Thought Literary Festival 2010: Off the Edge **£9,939**

LSE Photo Prize Exhibition **£5,500**

11th annual graduate conference – Observing, promoting and resisting social change: Perspectives from the social sciences **£5,000**





Other projects supported by the Annual Fund this year include those that allow students to express themselves creatively and explore extra-curricular passions, including a political graffiti project and the purchase of a new piano.

# Impact







## Roof Garden on St Clement's Building

Annual Fund award: **£1,708**

In 2009-10 the Annual Fund provided support to the Students' Union for the creation of a roof garden on top of the St Clement's Building. Over 150 students are involved in this project to build and maintain a garden.

Plants being cultivated include leeks, basil, spinach, potatoes and butternut squash. As well as providing an additional green space on campus, the hope is that the garden will help to educate students and staff about healthy living and demonstrate the ease of growing one's own food, thereby creating a more sustainable lifestyle.

The first harvest from the roof garden took place during the summer of 2010, and an event was held to celebrate this. Following the success of the harvest, a new Students' Union society has been formed to take the responsibility for the ongoing care of the roof garden.



Impact



## New piano for the practice room next to the Shaw Library

Annual Fund award: **£6,120**

In 2009-10 the Annual Fund enabled the LSESU Music Society to buy a new piano for the practice room, which is located next to the Shaw Library. With over 280 members, having musical instruments that are in tune and available for use is imperative to the success of the Society. The piano, a Kawai K6, was delivered to the School in May 2010 and has already made a difference to many talented pianists on campus.

Zack Susel, an undergraduate studying Government and President of the LSESU Music Society, said: 'The dilapidated instrument that sat in the room before was rather unpleasant to practice on – not so bad if you're playing honky tonk, but impossible for Brahms, Chopin, Liszt or Beethoven. The new one, on the other hand, is a pleasure. It has a beautiful tone and a highly responsive touch. It's kind of like comparing a 1987 Toyota Camry to a 2010 Porsche. In other words, there really isn't a comparison. Now our pianists will be able to prepare properly for our concerts, or simply release stress on an instrument while they sing their revision-time-sorrows in tune.' LSESU Music Society holds lunchtime concerts during term time, and all are welcome to attend.

### Awards breakdown

Roof Garden on St Clement's Building **£1,708**

The Old Building entrance redevelopment – creating a sense of arrival **£34,075**

LSE Residences – front of house welcome screens **£25,000**

Greening of Houghton Street **£14,000**

Additional cycle stands – Portugal Street **£12,631**

New piano for the practice room next to the Shaw Library **£6,120**

DIY Art: by any means necessary **£1,900**





## Attracting the brightest and the best

In 2009-10 the Annual Fund awarded **£198,204** to projects aimed at helping the School to attract and retain the world's best and brightest minds, regardless of financial means or background.

LSE is committed to recruiting the best possible students with the highest academic and intellectual potential, regardless of their economic or social background, and to supporting and encouraging them in exploring their educational options.

In the 2009-10 academic year LSE awarded around £13 million in scholarships, bursaries and other types of grants to its student body. Of this total £2.5 million was given to LSE philanthropically, enabling scholarships for over 250 gifted students, and making it possible for some of the most talented individuals from across the world to benefit from the opportunity of an LSE education.

In addition to the School's ongoing student recruitment activities, since 1998 LSE has been involved with a number of widening participation and access initiatives. The aim of these initiatives is to raise the aspirations of secondary school and college students. These schemes are not just targeted at increasing the number of applications to LSE, but are aimed at encouraging students to apply to fulfil their potential at the best university for them.

The Annual Fund has actively supported these initiatives and, in recognition of their importance to the School, each year awards funding for hardship funds for students as well as widening participation projects.


## New Futures Fund

Annual Fund award: **£100,000**

In 2009-10 the Annual Fund provided funding to the New Futures Fund, granting 15 students facing financial difficulty the opportunity to begin or continue their studies at the School.

The Fund supports students who have applied for financial assistance on the basis of hardship and is supplementary to all other planned scholarships offered by the School. Its flexible nature allows LSE to offer help to students when unexpected financial situations that threaten their ability to study at the School arise.

Scholarship schemes such as the New Futures Fund transform lives. They are a direct investment in the world's future policy-makers, business champions and leaders, who will be a force of change in the world of tomorrow.



“My scholarship has enabled me to experience university life in a way that otherwise may not have been possible. I am able to dedicate myself to my studies and to participate fully in the student community, free from financial concerns.

**Emina Hodzic**, BSc International Relations and History  
2011, recipient of a New Futures Fund scholarship



Impact





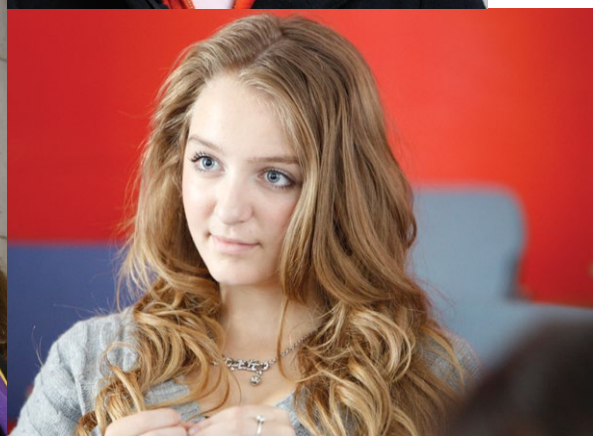
Annual Fund award: **£73,204**

In 2009-10 the Annual Fund provided funding to LSE CHOICE, the School's flagship widening participation programme which works with talented young people from London state schools and colleges, giving them the tools they need to successfully apply to LSE and other competitive Russell Group universities.

The initiative consists of two main elements – a week long summer school followed by 16 two-hour Saturday sessions and is aimed at promising year 12 students studying at state schools or colleges who have no family history of higher education. Participation in the programme is free of charge, with breakfast and lunch provided and transport costs reimbursed.

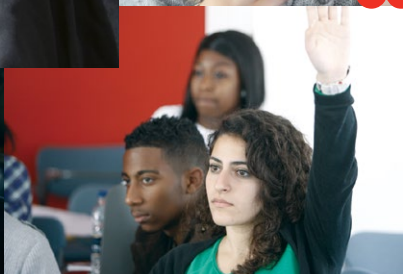
The summer school offers students the opportunity to spend one week studying a subject which they are interested in, together with core sessions designed to develop key skills and critical thinking. The two-hour Saturday sessions focus on an important area of the chosen subject area and are intended to revise key aspects relevant to syllabuses as well as encourage students to think more broadly.

To date the programme has involved 544 talented young people from disadvantaged backgrounds, providing them with the tools they need to successfully apply to LSE and other competitive universities.



*We are pretty much a working class family, my dad was a cook and my mother a housewife... in my section of the community there was more emphasis on just going out and getting a job. LSE CHOICE has taught me to think more broadly and ambitiously.*

**Mazida Khatun**, LSE CHOICE attendee, now studying in the Department of Government at undergraduate level



Flexible fund to support needy applicants – New Futures Fund **£100,000**

LSE Choice – widening participation **£73,204**

Widening Participation Conference **£25,000**





## Recognising our donors

This year the Annual Fund has thanked its donors in a number of ways from dinners and events to pin badges. This year has also seen the introduction of a new gift club, the Penguin Club.

### Donor pins

This year LSE chose to take part in a national campaign which seeks to promote philanthropic giving in Higher Education. Each year the campaign designates a week during September during which alumni donors of many of the UK's universities are encouraged to wear their institution's badge. All donors who have given at gift club level in the 2009-10 financial year should have already received their badges and we will be continuing this campaign going forward to recognise new members to gift clubs.

We hope that you will wear your Annual Fund badge with pride!

### Penguin Club

The Penguin Club is a new gift club which celebrates our most recent graduates who also choose to become donors. Members of the Penguin Club are alumni who have graduated within the last five years and make a gift worth between £20 and £99 to the LSE Annual Fund.

The reunion for the classes of 2005-09 that took place in September 2010 was the perfect launch pad for the new club.

### Director's Circle Reception

In March 2010 the Annual Fund invited all Director's Circle members to an annual event thanking them for their generous support to the School. This year attendees were welcomed and thanked by Howard Davies before hearing from Professor Thandika Mkandawire, Chair in African Development, a position made possible, in part, thanks to a £100,000 grant from the Annual Fund.

Following the lecture guests were invited to stay for drinks and canapés whilst enjoying the splendour of the Royal Society and listening to short speeches from Shibani Mahtani and Nicolas Oudin, who are both current students. Both students talked of the impact that the Annual Fund has had on their experience at LSE and the wider impact the Annual Fund has on student life.

### Chairman's Circle Dinner

The Annual Fund invited its Chairman's Circle donors to Simpson's-in-the-Strand for dinner hosted by LSE Chairman, Sir Peter Sutherland, at the end of June 2010. Following a networking drinks reception in the Regency Room, guests were seated to enjoy a sumptuous dinner. Conversation flowed easily and guests discussed, amongst other things, their time at LSE and current affairs.

Towards the end of the evening, guests listened eagerly as Peter Sutherland opened his speech with his tradition of telling a joke, and this year he did not disappoint. Peter then went on to talk about the state of the School and what a pleasure it is to be a part of LSE. Peter closed by thanking donors for their leadership gifts to the Annual Fund and the importance of unrestricted gifts. The evening engendered a festive camaraderie amongst the Annual Fund's leadership donors.

*It's wonderful to be in a position to help LSE through supporting the Annual Fund. I plan to keep supporting the Annual Fund and will proudly wear my badge.*

**Rodrigo Fiaes** (MSc International Relations 1985)

*Our Donors*







## Leadership giving

Thank you to our Governors and alumni volunteers who dedicate their time and financial support to the School



*Our participation represents more than simply donating to the School, it is an opportunity to impact our life experience and maintain a presence within the corridors, walls and life of LSE.*

**Rafael Alves de Almeida** (LLM 2004) President of the LSE Brazilian Alumni Association

## Court of Governors

The School's Governors provide leadership through their support of the School and continue to lead the Annual Fund appeal with a high participation rate. Some other Governors give substantial support towards scholarships as well as other key School priorities. Some have also pledged legacy support to the School. They are all recognised in this report.

Dr John Avery Jones CBE\*  
 Stephen Barclay  
 Peter Barton●  
 Sir Anthony Battishill GCB\*  
 Professor Charles Bean\*  
 Viviana Berla\*  
 Cherie Booth QC  
 The Rt Hon Baroness Bottomley PC\*  
 Bronwyn Curtis OBE\*  
 Victor Dahdaleh\*  
 Howard Davies KB\*●  
 Roger Davies\*  
 Leslie Dighton\*  
 The Hon Mrs Justice Linda Dobbs  
 Alan Elias  
 Mario Francescotti  
 Neil Gaskell  
 Rowan Harvey●

Johannes Huth  
 The Rt Hon Lord Jacob\*  
 Kate Jenkins  
 Peter Jones CBE  
 Lord Judd of Portsea\*  
 Gauri Kasbekar-Shah  
 Anne Lapping CBE\*  
 Dr Spiro Latsis\*  
 Martin Lewis  
 Professor Robin Mansell●  
 Professor Peter Miller●  
 Ashley Mitchell\*  
 Roger Mountford\*  
 Anne Page\*  
 Professor George Philip●  
 Ali Rashidian  
 Daniel Sheldon●  
 Richard Shepherd MP\*  
 Brian Smith\*  
 Cato Stonex\*  
 Peter Sutherland KCMG  
 Michael Thomas CMG QC\*  
 George Wetz●●  
 The Hon Mrs Laura Wolfson Townsley\*  
 Professor Robert Worcester●  
 Sir Evelyn de Rothschild  
 Dr Christine Downton\*  
 Richard Karl Goeltz\*  
 Patricia Weinberg\*



## Alumni Association Executive Committee and Group Leaders

Thank you to the Alumni Association Executive Committee members and Group Leaders who have made a donation to the Annual Fund during the last financial year.

Rafael Alves de Almeida●  
 Christopher Bodell  
 George Davidson  
 Leon Desbrow\*  
 Pierre Dinan  
 Beth Halpern  
 Gregory Hilton-Sullivan●  
 Guari Kasbekar-Shah  
 Fiona MacDonald  
 Karina Robinson\*  
 Elliot Simmons●  
 Collin Tseng-Liu

*Our Donors*

● Member of staff ● Friends and Family donor ● Reunion donor ● Current student \* Given to the Annual Fund for six years or more





## Chairman's Circle

Thank you for making a leadership gift of **£5,000** or more to the Annual Fund during the last financial year

*Nine Chairman's Circle Gifts enables the Annual Fund to promote academic excellence by providing a two-year fellowship to a Scholar At Risk.*

### Chairman's Circle members

Adele Biss  
Bernard Casey  
Roland Chow  
Filippo Cipriani  
Victor Dahdaleh\*  
George Davidson  
Roger Davies\*  
Stuart Feldman  
Luca Ferrari  
Julian Green  
Susan Green  
Mounir Guen  
Stefan Guetter\*  
Jon Hillestad  
Johannes Huth  
Norman Ip  
Siok Hui Ip  
Arnold Kammerling MBE\*  
Bertrand Kan\*

Maria Ketvel  
Niko Ketvel  
Dr Spiro Latsis\*  
Martin Lewis  
Lady Lloyd of Berwick MBE\*  
Eric Lonergan  
Barbara Ma  
James Nicol  
Grace Oei\*  
Beatriz Pessoa de Araujo●  
Paulo Pessoa de Araujo●  
Miguel Ramos-Fuentenebro\*  
Brian Roper MBE\*  
Margaret Roper\*  
Sir Evelyn de Rothschild  
Bryan Sanderson CBE  
Henrietta Stephen MBE\*  
Carsten Stoehr\*  
Cato Stonex\*

Peter Sutherland KCMG  
Hilary Till  
Ursula Van Almsick  
Burkhard Varnholt  
The Hon Mrs Laura  
Wolfson Townsley\*  
Silas Yang

#### LSE Centennial Fund (USA)

Mark Baun  
Stephen Hays  
David Heleniak  
Kathleen Kelley  
Dr Amy Knight  
Dr Malcolm Knight\*●  
David Wah

#### LSE Singapore Trust

Suchad Chiaranussati

Wilson Kwong  
Desmond Lim  
Chin Chai Ooi  
Professor Saw Swee Hock  
Eddie Teo  
Patricia Yeo

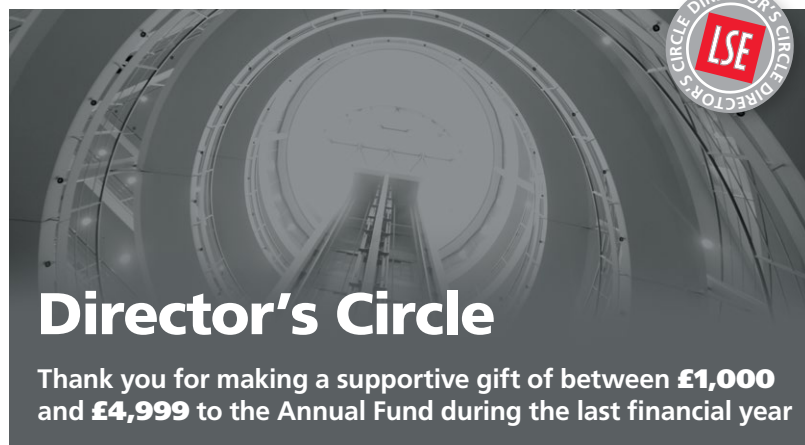
#### In memory

The late Janet McMillan  
(née Stuttard)

Two Anonymous Donors

*Our Donors*





## Director's Circle

Thank you for making a supportive gift of between **£1,000** and **£4,999** to the Annual Fund during the last financial year

Three Director's Circle Gifts allows the Annual Fund to support the creation of sustainable facilities and a world-class campus environment by enabling the greening of Houghton Street.

### Director's Circle members

Helen Abbott  
Nicholas Archer\*  
Jeremy Asher\*  
John Bailey  
Yvonne Bailey  
Ahmed Balamesh\*  
Stephen Barclay  
Professor Nicholas Barr\*  
Catherine Baxendale\*  
Stefan Benedetti  
Clare Birks\*  
Dr Mary Blair\*  
Cherie Booth QC  
Tamara Box\*  
Piers Butler\*  
John Carrington  
Amish Chadha\*  
John Chu  
Duncan Clark  
Harry Culham\*  
Philip Cutts\*  
Professor Frederick D'Agostino  
Howard Davies\*

Richard Delbridge  
Professor Susan Dev OBE  
Leslie Dighton\*  
George Duncan  
Richard Dunn\*  
Alan Elias  
Daniel Elliott\*  
Rowena Ellis\*  
Diana Eyre\*  
Kenneth Faircloth OBE\*  
Mario Francescotti  
Lydia Frankenburg\*  
Michael Frankenburg\*  
Ralph Gaskell  
Amir Gehl  
Professor Lord Giddens\*  
David Goldstone CBE\*  
Fumihito Gotoh  
Derek Green  
Pamela Green  
Lloyd Grossman\*  
John Gyles  
Gonca Gürsoy Artunkal\*

Motonobu Hasegawa  
Renate Herzog  
Jung Hong  
Grace Jackson OBE  
The Rt Hon Lord Justice Jacob\*  
Alexander Jan\*  
Justin Jones  
Peter Jones CBE  
Caroline Cartellieri Karlsen  
Colleen Keck  
Fiona Kirk\*  
Omar Kodmani  
Alexander Koriath\*  
Ted Leavitt  
Michael Lee  
Chao Leong  
Sir Michael Lickiss\*  
Fiona MacDonald  
William MacDonald  
Keith Mackrell\*  
Professor Richard Macve\*  
Sir Gordon Manzie KCB\*  
Simon Meadows  
John Mehigan\*  
Ahmet Mesinoglu\*  
Robert Miall\*  
Professor Peter Miller\*  
Ashley Mitchell\*  
Giovanna Monnas Kampouri  
Eryl Morris\*  
Roger Mountford\*  
Patrick Murray  
Gerard O'Neill  
Thompson Okpoko San  
Roger Paice\*  
Constantinos Papadopoulos\*  
Michael Peacock OBE\*  
Michael Pearson\*  
Michael Place\*  
Eric Poon  
Michael Posen\*  
Ali Rashidian  
Dr Mark Roomans  
Richard Shepherd MP\*  
Gauri Sikri Lakhpal  
Richard Simmons CBE  
Peter Simon\*  
Brian Smith\*  
Giuseppe Spadafora

Sir John Sparrow\*  
David Starkie  
Austen Steers  
Henry Tai  
Andrew Templeton\*  
Peter Terry\*  
John Trimmer  
Sebastiaan Van Den Berg  
Dr Gertjan Vlieghe\*  
John Ward\*  
Timothy Wentworth\*  
Robert Williams\*  
Wai Yung

### LSE Centennial Fund (USA)

Edgar Ancona\*  
Nora Ancona  
Dr Henry Armour  
Professor Robert Banks  
David Beecken  
Anne Bingaman\*  
Burt Blodgett  
Guy Elliott  
Breht Feigh  
Ann Friedman  
Richard Goeltz\*  
Dr Jacques Gordon\*  
Marc Grossman  
Patricia Houston  
William Hughes  
Paul Kaplan\*  
John Kendall\*  
Alexandra Korry  
Albert Lilienfeld\*  
Michael Longthorne\*  
John McKay  
Dr Kevin Michaels\*  
James Nicholson  
Steven Niemczyk  
Gary Perlin\*  
Lisa Peterson  
Michael Peterson  
Harry Reasoner Esq\*  
Joseph Rotondo\*  
Timothy Scrantom  
Lata Shah  
Dr Patricia Stockton  
Dr John Strudwick\*  
Bruce Tuchman  
Lorne Weil

### LSE Foundation Canada

Gregory Hilton-Sullivan\*

### German Friends of LSE

Dr Andreas Haindl  
Dr Dorothee Strunz\*  
Dr Heinrich Strunz\*

### LSE Singapore Trust

Victoria Ko Miu Ha  
Wah Kheong Leong  
Mei Fung Liem  
Ho Kee Lim  
Richard Magnus  
Ye Kung Ong  
Alexander Phua\*  
Hong Sheng Quek  
Avinderpal Singh  
Chee-Yan Yeoh

Three Anonymous Donors



• Member of staff • Friends and Family donor • Reunion donor • Current student \* Given to the Annual Fund for six years or more





# Clement's Circle

Thank you for your generous gift of between **£500** and **£999** to the Annual Fund during the last financial year

*Twenty four Clement's Circle Gifts allow the Annual Fund to promote academic excellence by supporting up to seven junior African Academics and practitioners to LSE as visiting fellows between 2011 and 2014 as part of the African Initiative.*

## Clement's Circle members

Donald Adlington\*  
Elizabeth Adlington\*  
Razia Ali  
Laurence Baker\*  
Alok Basu\*  
Thomas Batten●  
Sir Anthony Battishill GCB\*  
Professor Charles Bean\*  
Vivina Berla\*  
Michael Brooks\*  
Timothy Brunner  
John Buckland  
Cashfya Cazi  
Sheila Clark\*  
Dr Michael Collop\*  
Douglas Cracknell\*  
David Cremin  
Bronwyn Curtis OBE\*  
The Hon Mrs Justice Linda Dobbs  
Eileen Dooley  
Nivedita Doshi●  
Paloo Doshi\*  
Lionel Drewitt\*  
Keith Driver  
Philippe Dupont  
Erik Ehnimb\*  
John Evans\*

Nicola Farrell\*  
Rodrigo Fiaes  
Joseph Fitz\*  
Marios Genagritis●  
Pola Genagritou●  
George Georghiou●  
William Gibbons  
Professor Christopher Gilbert\*  
Lionel Gordon\*  
Stuart Grostern\*  
Reynard Hanoppo  
Brian Hardy\*  
Robert Hart\*  
Mark Herford●  
Dr Hector Hernandez-Garcia De Leon  
John Herring\*  
Jack Hodder\*  
Baroness Howe of Idlicote CBE\*  
Adrian Jones\*  
Dr George Kardouche  
Dr Peter Kendall\*  
Una Kendall\*  
Alexander Knox\*  
Dr Alfonso Kratter\*  
Laith Kubba  
Anne Lapping CBE\*

John Lee  
David Leeke\*  
Dr Michael Lenhoff  
Heather Lewis\*  
Rosalia Lloret●  
Donald MacGregor\*  
Sadat Mannan●  
Professor Robin Mansell●  
Dorothy Marden\*  
Sudha Maroo  
Rosemary Martin-Jones\*  
Maureen McCarthy\*  
Stephen McKeever  
Maureen Meer  
Nicholas Michaelides  
Dr Anna Michalski  
Marius Moller●  
Dr Wendi Momen  
Diane Morris  
Philip Niem●  
Professor Ian Nish\*  
Roger Okill  
Chin Lee Ong  
George Patterson  
Ian Pleace\*  
Annette Preuss-Nowotny  
Leroy Reid  
Dr Rosa Scoble\*  
Navinchandra Shah\*

Amir Shariat  
Regina Simpson\*●  
Dr Lesley Smith\*  
Giancarlo Tabegna Avv.  
Dr Ivy Tao  
Dr Philip Tasch  
Michael Thomas CMG QC\*  
David Thompson  
Erik Ulvestad\*  
Elena Vassiliadou●  
Gregor Vogelsang  
David Watkins  
Dr Norman White  
Roland Williams\*  
Irene Wong  
John Wood-Collins\*  
Elizabeth Worth\*  
Ara Yeromian●  
Bryan Yip●  
Liwei Zhang●

### LSE Centennial Fund (USA)

Daniel Akerson  
The Hon Thomas Ammons III  
Professor Janice Bellace\*  
Fred Brettschneider

Ian Cameron  
Mark Davis\*  
Jorg Decressin\*  
Karen Fitzner\*  
Brian Gilmore  
Dr Harold Glass  
Richard Heckinger\*  
Dr Jens Hilscher  
Peter Hosinski\*  
Leon Jacobson\*  
James Johnson\*  
Nicolaos Katsoulis  
Paul Kennedy\*  
Michael Langman  
Ralph Mendelson\*  
John Michaels Jr  
Wallace Mullin  
Kathleen Newland  
John Niehuss  
Anthony Paduano\*  
Eric Penanhoat\*  
Thomas Perez-Ducy\*  
Dr Gordon Peterson  
Ruth Porat\*  
Michael Ross\*  
David Satola  
Clifford Sethness\*  
Scott Silverman\*  
Laurence Simmons  
Joan Sorkin\*  
Laurence Sorkin\*  
Dr Judith Stoikov  
Richard Straus\*

David Turetsky  
Philip Utsch  
James Van Doren\*  
Jeffrey Weinberg\*  
Jared Weisfeld●  
Maurice Wilcox  
Samuel Wolff

### LSE Foundation Canada

Dr Patrick Kenniff\*  
David Lever  
Ian Morrison\*  
Dr John Pattison  
David Thompson

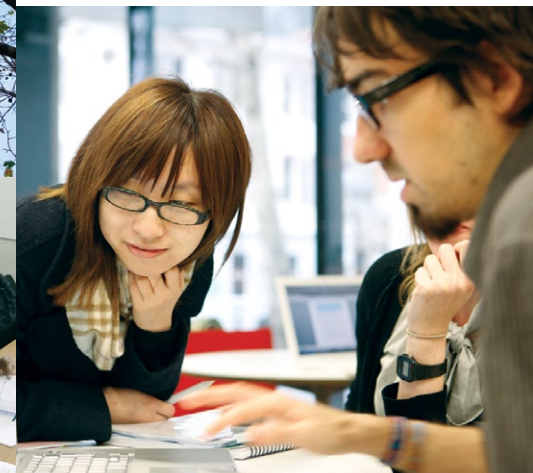
### German Friends of LSE

Roman Beilhack\*  
Roger Kiem  
Dr Ingo Luge\*

### LSE Singapore Trust

Yoon Chou Chong  
Peter Connell  
Andrew Fung  
Naresh Kalani●  
Lelia Lim

One Anonymous Donor







## Houghton Street Circle

Thank you for your generous gift of between **£250** and **£499** to the Annual Fund during the last financial year

*Fifteen Houghton Street Club gifts allow the Annual Fund to continue to attract the best and brightest students by supporting one UK/EU student's tuition fees for one year.*

## Houghton Street Circle members

Robert Adewunmi  
Erkinbek Adylov  
Daphne Ahrendt  
James Allan CMG CBE  
Rafael Alves De Almeida  
Gabriel Ambizas Konstantinos  
Anagnostopoulos  
Sir Derek Andrews  
Dr Demetrios Argyriades  
Josephine Armistead  
Graham Arran  
Dr John Avery Jones CBE  
Dr Rachel Bailey-Williams  
David Bamford  
Anthony Baron  
Josephine Barry-Hicks  
Marina Bastianello  
Bernadette Baxter  
Virginia Beardshaw  
Andreas Bender  
Vikas Bhardwaj  
Professor Patrizio Bianchi  
David Bird  
Robert Bluett  
Jonathan Bor

Richard Bowen  
Dr Dierk Brandenburg  
Hubert Brandts  
Barbara Brilliant  
Dr Helen Brown  
Adolphe Burkens  
Dennis Burrows  
Bridget Campbell  
Marie Capes  
Zenon Carnapas  
Roger Carroll  
Emmanuel Carter  
Olympio Carvalho E Silva  
Professor Jose Casas-Pardo  
Bidisha Chakraborty  
See Chan  
Professor Stanley Chapman  
Professor John Chelsom  
Naresh Chhatrala  
Rachel Chia  
Pawel Chodzko-Zajko  
Dr Thomas Christiansen  
Marina Comminos  
Allan Cook CBE  
Alison Cox  
Sidney Cox  
Jeanette Cragg

Dr Luigi Crosti  
Amanda Culhane  
Dr Riccardo Curcio  
Martin Curwen  
Chief Kolawole Daisi  
Keith Dalwood  
Robin Darton  
Dr Grace Davidson-Burnet  
Sonia De Jesus  
Christian De Visscher  
Roderick Denyer QC  
David Devons  
John Dewhurst  
Sophie Dimopoulou  
Pierre Dinan  
Sheree Dodd  
Professor Rigas Doganis  
Dr Ebba Dohlman  
Norbert Dreesch  
Graham Dye  
Michael Eaton  
Christian Edger  
Robert Edmonds  
Diana Ellis QC  
Francis Ellis  
Beatrice Engstrom-Bondy  
Alexandra Fain  
Rosemary Farrer

Susan Fasken  
Marcin Fiejka  
Bruno Fontaine  
Dr James Foreman-Peck  
Ross Fraser  
Dr Lynne Friedli  
Paraskevi Galani  
Stephen Gallant  
Barry Garfield  
Dr Till Geiger  
Caroline Godlove Mozley  
Nico Goossens  
Julia Goschalk  
Stephen Goschalk  
Robert Grant  
Professor Norman Graves  
Janet Grenier  
Shirley Griffiths  
John Grumbar  
Christoph Haas  
Margaret Hall  
Professor Martyn Hammersley  
Matthew Hammond  
John Healy  
Anthony Herron

Alun Hicks  
Dawn Hill  
Dr Martin Hill  
John Hodgson  
Keith Hollands  
Rossana Howgrave-Graham  
Lady Iro Hunt  
Professor Eno Inanga  
Dr David Janner-Klausner  
Professor Ian Jeffries  
Dr Dale Johnson  
Hugh Jones  
Cedric Joseph  
Eunice Jukes  
Josep Julia  
Dr Bernhard Junemann  
Gopinath Karunakaran  
Gauri Kasbekar-Shah  
Nicholas Kaufmann  
Joachim Kiefer  
Jennifer Kingsley  
Yoshiko Koizumi  
Dr Benedikt Kormaier  
Jerzy Kot  
Mary Lee  
John Leigh  
Dr Susan Lesser  
Siobhan Lewington  
Professor Roy Lewis  
Dr Federico Magnifico  
Alexander Marshall  
Steven Marshall  
Tsunako Matsumoto  
Dr Kent Matthews  
Patrick McMorrow  
Brenda Meldrum  
Professor Kenneth Minogue  
Krishna Mistry  
Dr Prabodh Mistry  
Panagiotis Mizios  
Michael Modiano  
Virginia Morck  
Manisha More  
Richard Morley  
Harold Mozley  
Yusuf Muftuoglu  
Dorlin Muresan  
Kristen Nelson  
Ray Newbiggin  
Gabriel Newfield  
Graham Nicholson  
Fabio Nicotera  
Hatsumi Nishioka  
Francis Nosek III  
Paul Nugent  
Gerald O'Callaghan  
Wendy O'Conghaile  
Patrick O'Sullivan  
John Ockenden

Erich Opfermann  
Cecil Oyediran  
Clifford Paice  
Egly Pantelakis  
Barbara Pare  
Charles Pare  
Pedro Pfeffer  
Chee Shing Phung  
Rosemary Polack  
Paraskevi Polyzogopoulou  
Michael Power OBE  
Arran Poyser  
Hilmary Quarmby  
Katherine Rabeau  
Lauri Rallies  
Christine Revoy  
Betty Richardson  
Dr Lawrence Roach  
Karina Robinson  
Anshuman Saikia  
Paul Samuels  
Dr Fernando Santos Granero  
Ruth Savery  
Roderick Scarth  
Anthony Schlesinger  
Rene Schneider  
Kazunari Shiraiso  
Mary Simpson  
Jeremy Smilg  
Ronald Smith  
Miguel Solana  
Laurence Solomons  
Stefanos Spathakis  
Ronald Springall  
Maria Stamouli  
Christopher Starr  
Christine Steeds  
John Stewart  
Frank Stoner  
Robert Swift  
Allen Sykes  
Timothy Sykes  
Dr Cecilia Tacoli  
Professor Toshihiko Tanaka  
Dr Bo Tang  
Nadhawan Tanyongmas  
William Taylor  
Petrina Tardjman  
Elizabeth Tietz  
Alexandre Tissot-Demidoff  
John Toll  
Eithne Treanor  
Professor Alison Trotter  
Stuart Trow  
Frixos Tsakkistos  
Kyriacos Tsioupras  
Stratios Tsitsopoulos  
Fraser Tuddenham

Carlos Valls Martínez  
Ghislaine Van Lookeren Campagne  
Adia Wahid  
David Wailen  
Timothy Watkinson  
Barbara Watson  
Ian Webb  
Oliver Weeks  
Christopher Westwick  
Stephanie Whitehead  
Nigel Whittaker  
Renee Willgress  
Margaret Williams  
Meriel Wilmot-Wright  
Dr Hin-Yan Wong  
Rose Wong  
Michael Wright  
Raymond Wright  
Ronald Wright  
Stephen Wylde  
Chi Yau  
Donal Young  
Dr Istifanus Zabadi  
Alexander Zakharchenko  
Michael Zuckerman

### LSE Centennial Fund (USA)

Professor Rein Abel  
Robert Adams  
Edward Ahern  
Anne Appar  
Dr Demetrios Argyriades  
Howard Arnett  
Kevin Bacon  
Professor William Baumol  
Harry Blaney III  
Scott Bowie  
Robert Brager  
Dr Joel Brenner  
Robert Burka  
Thomas Carothers  
James Carthaus  
Benjamin Conner  
Dr Hugh Conway  
Brian Curran  
Timothy DeMasi  
Dr Otto Doering III  
Dr Christine Downton  
John Durkin  
Frank Earwaker  
Susan Ehrlich  
Dr R Elson  
Terry Fokas  
Raymond Goodman  
William Gray  
Daniela Gressani  
The Hon Michael Guhin  
Gregory Gullickson  
Alice Hardigg  
Tabitha Hickman  
Dr Dale Johnson

Louise Jones-Geddes  
Janice Karlak  
John Kerr Jr  
Nora Kerr  
Kathryn Koch  
Jonathan Lapin Esq  
Michael Lee  
Robert Levinson  
George Lynett Jr  
Shaun Maguire  
Professor Walter McMahon  
Carolyn McMahon  
David Milne IV  
Alex Moore  
Anthony Morales  
Dr Lorenzo Moreno  
Nancy Nollen  
Professor Stanley Nollen  
Jean Oppenheimer  
Professor John Ord  
Jennifer Railing  
Diane Rosen  
Raffaele Sadun  
Dr Melvin Small  
Marc Sobel  
Robert Spjut  
Dr Angela Stent  
Philip Strasburg  
Steven Su  
Margaret Suralik  
Dr Curtis Tarnoff  
John Thornton Jr  
Wendy Vandame  
William Vigdor  
Laurent Vivier  
Harold Wackman  
Heather Wagner  
The Hon Matthew Watson  
Thomas Watts  
Frederic Weiss  
Marvin Wexler  
Dr Bettina Woll

### LSE Foundation Canada

David Alderman  
Susan Atkins  
Colin Beasley  
Dr John Crean  
Robert Douglas  
Claude Forget  
Georges Robichon  
Dr Abdulkarim Somjee  
Christine Whatmore

### German Friends of LSE

Dr Bernhard Junemann  
Carmen Nemeth  
Dr Bettina Woll  
LSE Singapore Trust  
Beng Seng Chan

Leh Chin Chong  
Soo Hoon Hauw-Quek  
Leslie Ho  
Frank Jiang  
King Fuei Lee  
Chee Leong  
Chiaw Beng Lim  
Wan Lim  
Dr Kai Hong Phua  
Mei Yin Sng  
Gee Keow Tan  
Tai Kiat Tan  
Anthony Tat  
Collin Tseng-Liu  
Valerie Choo Lin Ong  
Eng Kian Yap

### In memory

Family of Gill Mosley  
(in memory of  
Gillian Mosley)

Nine Anonymous Donors







# Beaver's Club

Thank you for your generous gift of between **£100** and **£249** to the Annual Fund during the last financial year



## Beaver's Club members

Leena Aalto  
Sophie Aaron-de Bernis  
Leo Abeles\*  
Rayd Abu-Ayyash  
Chief Joseph Abulokwe  
Abdurhaman Acerol\*  
Dr Diane Acha-Morfav  
William Acres  
Rawdon Adams  
Nimat Ahmed  
Peter Aimufua\*  
Dr Festus Ajayi  
Mahmood Al Alawi  
Stephen Alambritis\*  
George Alexakis\*  
Richard Alexander\*  
Stelios Alexandrou  
Dr Torki Alshubaiki  
Joyce Aluko  
Professor Samuel Aluko  
Dr Hala Alumran\*  
Hilary Anderson\*  
Dennis Andrew\*  
Rosemary Andrew\*  
Jamal Ansari  
Amanda Anthony\*  
Praxoulla Antoniadou  
Kyriacou  
Ursula Antwi-Boasiako  
Lynne Archibald  
Professor John  
Armstrong  
Diana Aronstam  
Artemis Artemiou  
Hassan Asmal  
Ron Aspinall  
John Atherton\*  
Eleanor Baber\*

Diana Basic\*  
Sebastian Baer  
Patrick Bailey  
Richard Bailey  
Ann Baker\*  
Dr Gerben Bakker  
Dr Marcia Balisciano  
OBE  
Codrington Ball\*  
Diana Barker  
Joseph Barling  
David Barnes  
Frederick Barnes\*  
Bernard Baron\*  
Claudia Barrachi\*  
Alec Batanero  
Robert Bax  
Philip Bayliss  
Neville Beale  
John Beard\*  
Maurice Beard\*  
Leena Beejadhur  
Sheila Bennett  
Henrik Bernitz  
Benjamin Bernstein  
John Bieber\*  
Bodil Blain  
Anna Bloor\*  
Frank Blumenfeld\*  
Lynn Blunt  
Robin Blunt  
Professor Noel Boaden\*  
Terence Boley\*  
Christopher Bolton  
Kevin Booth  
Paul Boothroyd\*  
Rowan Bosworth-  
Davies

Dr Francis Botham  
Adrien Bourdon-  
Feniou  
Dennis Bradley\*  
Gregory Branch  
Gordon Brand\*  
Ronald Brandon\*  
Michael Brecknell\*  
Anthony Brennan CB\*  
Germain Brion  
Roberta Brockman\*  
Julian Brose  
John Brougham  
Robert Budd\*  
Jon Burden\*  
Nicholas Burt\*  
Nico Busch  
Richard Butler  
Wenbin Cai  
Allison Calderbank  
Mark Callingham\*  
Maria Cannazza  
Dr Charmian Cannon\*  
Dr Isidore Cannon\*  
Peter Capel\*  
Dr Delio Cardoso Cezar  
Da Silva  
Dr John Carrier  
Christian Carrillo-  
Rodriguez  
Audrey Catford  
Robert Cerdan\*  
Ciedic Chan  
Ivan Chan  
Satjinder Chander\*  
Tse Chang\*  
Christian Chavagneux  
Baldev Chawla\*

Wai Cheng  
King Tsz Cheung  
Kevin Chidgey\*  
George Chryssis  
Dr Stefano Cianferotti\*  
Anna Ciarrapico  
Michael Clark  
Richard Clark  
Simon Clark  
Maria Clerides  
Michael Cohen\*  
Olive Coleman\*  
Stephen Collins  
Andrew Colman\*  
Antoine Colombani  
Professor Fabiano  
Colombini  
Michael Connah\*  
Maria Consoli\*  
Vivien Cook  
Squadron Leader Daniel  
Cooper  
Rahele Cooper\*  
Michael Cordingley\*  
The Rt. Hon. Baroness  
Corston PC  
Louis Cote\*  
Professor Stephen  
Cotgrove  
Michael Cozonis\*  
Charles Crebbin\*  
Fernando Criado Alonso  
Lord Croham\*  
Vincenzo Crupi  
David Crutch\*  
Andrew Daniel\*  
Paul Dare\*  
Alexander Darmoo\*

Peter Davies  
Jack Davis\*  
Ronald Davis  
Dr Anna De Benedetti  
Niels de Terra  
Dr Alison Dean\*  
Mark Deen  
Raul Delgado Sosa  
Dr Constantine  
Delicostopoulos\*  
Masimo Della Justina  
Yiola Demetriou\*  
Stavros Dendrinos  
Michael Denham  
Dana Denis-Smith\*  
David Denny\*  
Sameer Desai  
Terence Dignan\*  
John Dixon  
John Dodd\*  
Sally Dolle  
Christopher Down  
James Dry  
Andrew Duguid  
Jennifer Dunlop\*  
John Dunn  
Patrick Dupont-Liot  
Christophe Duret  
Alan Eastbury  
Miriam Edelman  
Geoffrey Edge\*  
Margo Edwards  
Neville Eisenberg  
Janet Elliott\*  
Michael Eltenton OBE  
Alexandros Ethelontis  
John Evans  
John Evans\*  
Professor Mary Evans  
Zuzana Feachem  
Christian Feghali

Trevor Fenemore-Jones\*  
Xinyue Feng  
Jose Fernandez-Da  
Ponte  
Danny Fischer  
Alan Flint  
Federico Flora  
Nicholas Fowler\*  
Dr Stefano Frega\*  
Aage Frohde  
Professor Samuel Galai  
Sylvie Gallage-Alwis  
Clive Gallier\*  
Elena Garcia de la  
Fuente\*  
Ignacio Garcia-Téllez M  
Eileen Geary  
Alexander Gerrard  
Panos Ghalanos  
Dr Ioannis Giannikos\*  
Norman Gibbs\*  
Johannes Gielen  
Juan Gil Crespo  
David Glass\*  
Professor Derek Glover\*  
Peter Gluckman\*  
Hideki Goda  
Caleb Goddard  
Alan Godden\*  
David Gold  
Lois Goldthorpe  
Dr Frederick Golooba-  
Mutebi  
Graham Gooding  
Professor John Goodman  
CBE\*  
Constance Gore\*  
Dr Paul Gorecki\*  
George Goutis  
John Gower\*  
Susan Grant

Margaret Greenwood  
Malcolm Grindrod\*  
Jeremy Grose  
Professor Jacques  
Grossen  
Sandro Grunenfelder  
Dr Maria Gutierrez  
Domenech  
Lesley Hallett  
Stephen Hallett  
Lionel Halpern\*  
Peter Hames\*  
Alexander Hamilton  
Roula Harfouche  
Jack Harmsworth  
Ian Harrison\*  
Lorna Harrison\*  
Professor Peter Hart  
Laura Harvey\*  
Dr Nikita Harwich  
John Harwood\*  
Tsutomu Hashida  
Patrick Hawke-Smith\*  
Gillian Hayes-  
Newington  
John Hays  
Dr Frances Healy\*  
Timothy Hedger\*  
Geoffrey Hemingway\*  
Jean Hennessy\*  
Anthony Henry\*  
Robert Henson  
Michael Heppner\*  
David Heycock CBE  
Professor Sheila Hillier\*  
Julian Hirst\*  
Martyn Hobrough  
Andrew Hochhauser QC\*  
Wilfred Hockfield  
Harry Hogg\*  
Andrew Holland\*

Dawn Holland  
Keith Hollins  
Nathaniel Holtham  
John Home\*  
Claire Horsley  
Willem Horstmann\*  
Margaret Horwich\*  
Lun Hu  
Dr Peter Hughes\*  
Brian Humphreys\*  
Greta Hyde\*  
Kay Ingram  
Professor Joseph Isaac  
Yoshiaki Iwao  
Roelof Jacobs  
Ingrid Jacobson Pinter  
Paul Jaffe\*  
Kaiser Jamal  
Catherine James  
Maximilian Jarrett  
Isabel Jeffers\*  
Kate Jenkins  
Christian Jenni  
Jeremy Jensen  
Richard Jeremy  
Jonathan Jessup\*  
Sener Jevan  
Nicholas Johnson\*  
George Jones  
Graeme Jones\*  
Rachel Jones  
Lisa Joven  
James Jovett\*  
Sir Edwin Jowitt\*  
Lord Judd of Portsea\*  
Kasper Kaarbo  
Oleg Kalnichevski  
Dr Dimitrios Kalodoukas  
Christodoulos Kaloyeros\*  
Jyoti Kamath  
Jiro Kashiwagi

Nicholas Keenan  
Penelope Kegerreis\*  
Simon Kester\*  
Peter Kett  
Richard Kew\*  
Aline Khouri  
Sara Kibel\*  
Heinz King\*  
Ralph King\*  
Dr David Kirkley  
Adrian Koh  
Harry Klahr\*  
Dr Bernhard Klement\*  
Adrian Koh  
Dr Totis Kotsonis  
Katharina Kraak  
Tobias Kramers  
Arthur Krebbers  
George Krimizis  
Knut Kroepellen\*  
Tetsuo Kubota  
Peter Kuit\*  
Andrey Kuleshov\*  
Henrik Kulseng-Hanssen  
Alexis Lagoudakis\*  
David Lambert CBE\*  
Dirk Lammerskoetter  
Kim Lansdown\*  
Geir Larsen  
Denys Lauwers  
Michael Lavrysen  
Anne Layman  
Ellen Lederman  
Professor Chulwoo Lee  
Dr Alan Leech\*  
Michael Lehne  
Dr Roger Leigh  
Hendrik Lemahieu  
Dr Peter Leuner\*  
Martin Lewis\*  
Richard Lewis-Jones\*

Patrick Lim  
Bethia Lindars  
Clifford Lines\*  
James Lister  
Elizabeth Little  
Cathryn Lloyd  
Clifford Lloyd-Jones\*  
Toby Locke\*  
Xavier Lopez Del Rincon  
Trousseau  
Jonathan Love  
Dr Adriano Lucatelli  
Pirjo Lumme  
Alessandra Lustrati\*  
Professor Kenneth  
MacKinnon  
Guadalupe  
Machinandiarena  
John MacRory\*  
Michael Madden  
Resham Mahal  
Charicia Makri  
Francisca Malaree\*  
Sa'ad Malik  
Maria Mamon  
Marc Mansfield  
Federico Manzano  
Lopez  
Pamela Mar  
Dr Gabrielle Marceau\*  
Professor Maria  
Marcuzzo\*  
Alice Margey  
Dr Ulrich Markides  
Dr Aristides Marques  
Michael Marray  
Dr Ulrich Marsch  
Pamela Marsh\*  
Dr David Martill  
Ian Martin\*  
Dr John Martin  
Peter Martin\*  
Raul Martin Arranz  
Dr Patricio Martinelli\*  
Sara Mason  
James Masson\*  
Geoffrey May  
David McAuley\*  
Yasmin McDonnell  
Hesse McKechnie  
Sebastian McKinlay\*  
Paul McMahon  
Michael McMonagle\*  
Judge Jeremy McMullen  
Professor William Mead\*  
Luis Medina  
Samid Mehraliyev  
Nilesh Mehta\*  
Beatriz Meldrum\*  
Duncan Melville\*  
Penelope Mendelssohn\*  
Dr Melvina Metochi  
Ian Meyer\*  
Michalakos Michael



Dr Nicholas Miles Francine Miller* Peter Mitchell Dr Muriel Mitcheson Brown Hideaki Miyata Deborah Moller John Montgomery Arthur Moore* Paul Moreau A Moreland Brian Moreland Patricia Morgan* Elsbeth Morley* Ian Morley Isabel Morrison* Nicolas Moscholios Gillian Mottram* Peter Mueller Damian Murphy Diane Murphy John Murphy Catherine Murray Martyn Must Michalis Mylonas Hirokazu Nakajima Dr Mario Nava* Dr Holger Nehring Dr Kathleen Newman* Dr Karl Newton Dr Demos Nicolaides Dr Shizuya Nishimura* Takashi Nishiwaki Sharon Nokes Jacqueline Noltingk* Mia Norcaro Sally Norman Maggie O'Connor Jarlath O'Hara Timothy Oake Benjamin Oakley* Kazuhiro Obayashi Dr Peter Oberlechner Emeka Odogwu Dr Omogbai Omo-Eboh Shukuko Onishi Professor Herbert Onitiri Tariq Osmari Karen Oudin Edward Owusu-Sannah Patricia Owusu-Sannah Andrew Oxley* Anne Page* Dr John Paget* Dr Celia Palchmayr* Harry Papageorgiou* Theocharis Papamargaris Dr Bala Paramanathan* Joon-Pyo Park William Parker*	Kevin Parris* Nigel Passmore* Fernando Pastor Saleela Patkar Gerard Patronis Swati Paul* Lesley Pavincich* Dr David Pearce* Thomas Pearson* Aileen Pebody Giovanni Pegoretti* Professor Anna Pellanda Custoza* David Pelly Fionuala Pender Paul Pennington-Smith Susan Penny Muriel Pepper* Ana Perez Espartero* Gudrun Persson* Andreas Petsas Dorothy Pettitt* Hugues Plyffer Professor George Philip Andrew Phillips Tebb* Neil Pigott John Pike CBE Edward Pincheson Anthony Platts* Nigel Platts Ann Pope Alan Porter* David Potter* Professor Michael Power Jarlath Pratt Rebecca Prebble Alexander Prentice* Dr Norman Price JP Roger Price Saw Hua Pui Nicholas Purchase Jill Quaife Branislav Radulovic John Ralli* Rishi Ramkissoon Vedad Ramliak Alan Ravenscroft Kenneth Ravenscroft* Douglas Rawlinson* Jon Rees Sean Rickard* Dr Eleni Rizakou* June Road* Glyndwr Roberts* Leighton Rochester Andrew Rogerson Professor Harold Rose Joyce Rosser* John Rushton MBE Dawn Russell*	Tariq Sadiq* Philip Sadler Joan Salter Stefka Samus* Peter Sandersley Roger Sansom* Silvia Santoro Helen Sasson Daljit Saund Shilpen Savani Nikos Sawwakis Kathleen Scanlon Bradley Chiara Scassa Fabrizia Scassellati Philippe Schaack Stephen Schneider* Nicolas Scholl Carlos Schuster Chayla Dr Richard Schwartz* Jonathan Schwarz* Gregory Segal Alexey Seleznev* Andrea Sempirini Mathias Senn* Paul Sentance Demosthenes Serefoglou Naresh Sethi Graziano Sezzi Dr Bindi Shah* Siddharth Shah Nalini Sharma Michael Sharman* Wei Shi Michael Silver David Simmons* June Simpson* Ivan Sivukha Geoffrey Skinner CBE* Zisis Skouloudis Howard Smith* John Smith* Keith Smith Peter Smith* Dr Moehamad Soerakoesoemah Daniel Spayne Judith Spells Michael Spiller* Elizabeth Spiro Edward Stacey John Stanley Raymond Stark* Anthony Starr* Elisabeth Steeman* Paul Stibbe* Amanda Stokes- Roberts* Peter Stone* Eiji Sumino	Alistair Summers Julian Szego Sahar Tabaja Elaine Tang Maurizio Tassi* Clare Taylor Gold Thomas Tendorf* Richard Thomas* Dr William Thomas* Sarah Thun-Hohenstein Dr Mary Tiffen* Professor Nicholas Tilley OBE Joan Timmins David Todd* Neil Tomkins* Phyllis Toms Roy Trinder Frances Turner* Dr Edwin Van De Haar* Dr Judith Van Walsum- Stachowicz* Marie Marina Vassilicos William Vause* Roberto Velasco Kenneth Venables* Philip Vergauwen* Aristides Vidouris David Vincent Sachdev Vohra Daniel Vons Hirsch Ernst Von Kimakowitz Ioannis Vourros John Waddington Keith Wade* Karim Wali David Walker* Reverend John Walker* Professor Sandra Wallman* Richard Warren* Cerdic Warrillow Dr Susan Waters* Philip Watkins MBE Professor Peter Watson* Vernon Waughray Muna Wehbe Michael Weston* David Whippe Raymond White* George Whiting* Dr John Whyman* Doug Wilcox Geoffroy Willaume Dr Gethin Williams Maureen Willis Alexander Wilson Andrew Wilson* William Wingate William Winward	Toby Wise George Wiskin Linda Wood Lynette Woodbridge Professor Robert Worcester Carl Wretman Margaret Wright* Mei Xue Dr John Yates* Dr Athina Yiannakou Tali Zimmerman  <b>LSE Centennial Fund (USA)</b> Onyema Afulukwe Priscilla Ahmed Julie Albright Karen Anderson* Merrill Anderson Sotero Arizu* Michael Azefer Jennifer Baek Raffi Balian David Barlow Marc Baum Deborah Beck Ricardo Berner Sulkin Kenneth Bialo* Tami Biddle Moritz Von Bivins Stanley Black* Christopher Bodell Edith Boehler* Amy Borrus Jacqueline Brody Vincent Budesa* Thomas Burkemper* Craig Bury Cornelius Cacho* Rebecca Campbell Dr Richard Caruso Mary Cascio John Charman Peter Clunie William Cobbett John Connor* Karen Cross Dr Michael Curtis John Dahl Charlotte Damron Dr Stephen Davis* Patrick Deluhery Stephanie Dencik* Leon Desbrow* Robert Douglass Jr* Robert Dudiak* Joy Dunkerley Stephen Dyott Susan Eddy*	Dr Hali Edison William Edlund* Professor Nicholas Edsall* Nicholas Ehlen Jason El Koubi Dominic Endicott* Tamsen Endicott* Dr Carol Evans David Evans* Alan Exelrod Genie Fernald- Heimbigner Dr Edwin Feulner Jr* Stephen Fisher Eddy Fonyodi Edwin Fountain Stephen Foxman Joshua Friedlander The Hon Stuart Friedman* Dr Beth Fuchs* Diane Fuchs David Gilmore Laurence Goldfarb Lee Gordon Professor William Gould IV John Granato III Nathalie Granato* Molly Greg Allen Grimes III Deborah Gross Professor Jane Guyer* Julian Ha Beth Halpern The Hon Mr Orval Hansen* Ryan Hansen Karen Harasymiak Michael Hartzmark Daniel Haskell Maureen Healy* Ariane Hegewisch Carlton Henry* Richard Hiscocks Arian Hodgson Fiona Howe Arthur Howe Angela Hsu Jonathan Hung James Hunt* Nizar Jetha* Dr Jan Kalicki* Swadesh Kalsi Yoonhae Kang David Kassing Bruce Katz* Professor Miles Kennedy* Thomas Kern Theodore Kim Damian King	William Kinnear Stanton Koppel Theodore Koros Layne Kruse* Mark Latonero Brian Lee Dr David Lewis* Dr Robert Litwak* Samuel Livermore* Benjamin Loewy Kevin Logan David Loughran Timothy Louie Douglas Lowell Geoffrey Luce Dr Richard Lyman Sean Lynn-Jones Adelaide MacMurray- Cooper Michael Marek Raymond Markovich* Michael Marston Douglas McKenna Nina McKenna* Jeffrey McNeill Robert Megna* Fernando Mendez William Meserve* Jessica Milano Paul Milmed* Professor George Modelske Sylvia Modelske* Yvonne Morrice- Johnson* Patrick Moscaritolo Christian Mumssen Allison Nagelberg Sidharth Nayar* Todd Newmark* Eileen O'Connor Kristen O'Connor* Dr Terry Olson* Mark Pasko* Professor Joel Paul David Pearce Scott Pedowitz* Anthony Pierson Pamela Plehn Mark Poff Janette Pratt* Walter Psaila Timothy Quinn* Monali Ranade Raymond Randolph Peter Rapelye Professor Peter Reddaway* The Hon. Carol Rehm Jr* Dr Wolf Reitsperger Michael Rosin* Arthur Rypinski* David Sahr Matthias Sainz	Donald Samuels* Mark-Andre Saucier- Nadeau Marianne Schafer Elizabeth Scheinfeld Dr Ann Schneider* David Schumeister Esq Ernest Schusky Judith Scott-Clayton Marc Sennwald Dr Alexander Shakow* Andre Sharon Stanley Shepard* W Sherb Dr Douglas Shier* Randl Shure Raghu Bans Singh Dr Ramteen Sioshansi* Jared Smith Susan Snyder M Spitzer Jr Thomas Sponsler Marshall Steeves* Dr John Stein Barbara Sternberg* Professor Robert Strauss Sandie Stringfellow* Michael Surgalla Jr Dr Daniel Szpiro* Michael Teitz Michael Touff* Jane Trevarthen-Traub* Cynamon Tritch Yogita Upadya Dr David Van Zandt Samuel Varghese Heather Viets Jeroen Visser* Rakesh Vohra* Stephen Von Oehsen Aaron Walters Gregory Watson* Colin Waugh Jeremy Weinberg* Patricia Weinberg* Dr Robert Weinberg* Karen Weingrod Dr Anthony Wells Warren White* Professor John Williamson Scott Withycombe The Hon John Woodcock Jr Eric Zachs Professor Jerome Ziegler	Krysha Derbyshire* Gerald Dimnik Richard Fraser* Anthony Frayne William Gillespie Clifford Goldfarb Donald Gracey Dr Michael Graham Dr Richard Gregor Marc Sennwald Dr Charles Jackson Dr John Kersell Stephen Kiar James Lebo QC Dr David Lewis Isabel Lewis* Christopher Mainella David McDermid Ross McLeod Ian McPherson Dr Alan Middleton* John Mierins* Joy Moore Professor Mary Mossman Dr Costanza Musu Jason Pantaloni Graydon Paulin Gordon Ritchie Dr Lawrence Schembri Felice Spitzer Christina Swindells Dennis Thomas Walter Underhill	Yen Mie Lim Elizabeth Loo Chen Kuo Low Siew Fong Ng Hui Chuan Oeij Tian Seah Moh Siong Sim Ena Su Kar Tan Ee-Han Toh Shin Toh Xing Wong Naisie Yang
--	--	---	---	---	--	---	--	---	---

21 Anonymous Donors

## German Friends of LSE

Helmut Ahlfeld  
Jorg Artmann\*  
Wolf-Dieter Berkholz  
Dr Anat Blodinger  
Dr Antonie Eser  
John Flower  
Hans-Jurgen Hummel\*  
Clemens Konig  
Dr Elisabeth Mueller  
Khursheed Siddiqui\*  
Mark Stiermerling  
Dr Ludwig Volz  
Cristina Von Busse\*

## LSE Singapore Trust

Feng Ang  
Lee Sia Chan  
Yao T'Sung Chang  
Zong Zhen Chiew  
May Ho  
Shahrukh Jafree  
Bipin Kumar Kamdar  
Chee Yuen Lee  
Kim Huat Lee  
Khoo Wee Leng  
Garich Lim Shington  
Ching Hui Lim

## LSE Foundation Canada

Dr C Banfield\*  
Mark Boulton\*  
Lev Bukhman  
Winston Chambers  
Frank Collins



# Other Annual Fund donors

Thank you for contributing to the Annual Fund during the last financial year

Khadija Abbasi •  
William Abraham •  
Christos Adamantidis  
Jakub Adamowicz •  
Peter Ade-Onojobi  
Mohamed Afrah •  
Dr Anna Agnarsdottir  
Reem Akl •  
Ibrahim Aksaray  
Sam Ala  
Ammar Alam • •  
Professor Martin Albrow  
Peter Aldis  
Andrew Aldrich •  
Christopher Alexander •  
Theresa Alexander •  
Dr Lewis Allan •  
David Allen •  
Judith Arney •  
Brigadier Israel Amoah  
David Anderson •  
Doreen Anderson  
Marion Andrew  
Gianluca Antonucci •  
Alessia Anzini  
Professor James  
Armstrong •  
John Aspinall  
Laure Astill  
Opeyemi Atawo •  
Elizabeth Atkins •  
Clive Attenborough  
Abimbola Ayodeji •  
Ayesha Babar •  
John Bailes •  
Wendy Bainham •  
Philip Baker  
Fariba Bakhtiar  
Dr Gordon Bannerman  
Professor Michael  
Bantonn CMG •  
Germana Barba •  
Stuart Barber •

Dr Harry Barlow •  
Brendan Barnes  
Dr Claire Baron  
Alan Bazlinton  
Roderic Beale •  
Phillip Beaumont •  
Commander Peter  
Beazley OBE  
Sandra Becucci •  
Alissa Bell  
Joyce Bellamy MBE •  
Professor Martin Benedict  
David Berridge •  
Harold Berrisford •  
Seema Bhatnagar •  
Daphne Bichard •  
Steven Bickers  
Kathryn Bieber •  
Brian Binns •  
Nils Bisgaard •  
Margaret Bishop •  
Beata Blaie •  
Anthony Blake  
Dr Brad Blitz  
Peter Block  
David Blood BA MA • •  
Marie Bloss  
Professor Jay Blumler  
Celene Boatwain  
Antoine Boatwright  
Andreas Bodenmann  
David Bolchover  
John Bolitho  
Madhu Bonwick •  
The Rt Hon Baroness  
Bottomley PC •  
Delphine Boursier •  
Eric Bowman MBE •  
Harry Boys •  
Sally Boys •  
Howard Brabrook  
Marco Bracco •

Henry Bradford  
Sheila Bradley •  
Jacob Breugem  
Eleanor Bridgland •  
Amanda Broadway •  
Robin Broadway •  
Anita Brocklesby •  
John Broughton •  
Elizabeth Brown  
Catherine Brown  
George Brownlee  
Joan Bruggen  
Etienne Brumauld Des  
Houlieries •  
Helen Buckley •  
Katherine Bulman  
Thomas Bulman •  
Yvette Burgess  
Sir John Burgh KCMG CB  
Christine Burke  
Janet Burrows •  
Peter Button •  
Douglas Cadman  
Shirley Campbell •  
Susan Canty  
Manuel Carballeira •  
Matthew Carey •  
Frances Carmichael •  
Cristina Carnicelli •  
Ian Carr  
Christine Carson •  
Dr Lionel Carter •  
Jean-Paul Casel  
Frank Cassell •  
Ian Catty  
Zen Cawvasjee  
Peter Cawley •  
Kamala Chandrasekharan  
Anthony Chapman •  
Suzannah Chapman •  
Philippos Charalambides  
Evangelia Charitoudi •  
Shirley Charles •

Celine Chateau  
Lynne Chilvers •  
Zainali Chinoy •  
Yasmine Chinwala •  
Sohail Choudhry •  
Maro Christou •  
Man Chu •  
Margaret Clapham •  
Alan Clapp  
Barbara Clark •  
Kathleen Clark  
Morag Clark •  
Graham Clarke •  
Joan Clarke  
Pauline Clarke •  
Richard Clarke •  
Dr Timothy Claydon  
Elizabeth Cleaver •  
Olivier Clementin  
Graham Cole •  
Mike Collins •  
Patricia Collins •  
Caterina Colombo •  
Margherita Colombo  
Pastorelli •  
Captain Clive Compton  
Rory Connelly •  
Margaret Conway •  
Dr Anthony Cook  
Dr Mary Cooke •  
Helen Coombes •  
Christopher Cooper •  
John Cornhill •  
Ann Cotterrell •  
Sarah Coulson  
Dr Edwin Course  
Melanie Cousins •  
Mark Cox •  
Alma Craft  
Professor Maurice Craft  
John Cragg •  
Abby Cronin •  
Carl Emmerson  
Dr Pantea Etessami •

Margaret Curtin  
Anthony Dacre •  
Peter Dalby  
Dr Francesca Dall'Omo  
Riley •  
Morgane Danielou-  
Dombouya  
Mary Darke  
Harold Darton •  
Manjula Das •  
Suparna Dasgupta  
Ghose •  
Elizabeth Davey  
Anthony Davies  
Dr Carolyn Davies •  
Helen Davies  
Sean Davies •  
Professor Bryn Davis  
David Davis •  
Robert Davis •  
Ann Daw  
Roger Daw  
Bernard Day CB •  
Elbertha De Neeling  
Peter De Ruijter •  
Giuseppe De Sica  
Aurelie Debussy-Pech  
Dr Alfredo Del Monte  
Andreas Demetri  
Xenia Dennen  
Raymond Dennis  
Samuel Devarajan  
Devrim Dirlik •  
Panagiotis Divriotis •  
Bora Dogan •  
Andrew Douglas  
Lawrence Douglas •  
Maria Dowling  
Professor David Downes  
Alfred Dowson •  
Dr George Drower •  
Professor Myles Dryden •  
Pamela Dub •  
Richard Dubeck  
Peter Duffy •  
Ismene Durand •  
Carol Durrant •  
Thomas Durrant •  
Julian Eales •  
Simon Early •  
Patrick Eavis •  
Marianne Ecker-Fierstone •  
Tobias Eckersley MBE •  
Stuart Eden •  
Ceri Edwards  
Tracey Croucher •  
Samatchana Egli  
Dr Lena Ekelund Axelsson •  
Olwen Eldridge •  
James Ellis •  
Professor John Ellis  
Robin Ellis •  
Tristan Elwell •  
Carl Emmerson  
Dr Pantea Etessami •

William Ettelson  
Professor Elizabeth Ettorre  
Gillian Evans •  
Prudence Evans  
Graham Facks-Martin  
MBE •  
Elizabeth Fairweather  
Adesola Fani-Kayode •  
John Feane •  
Neil Fearn •  
Howard Feather •  
Alistair Fell  
Michael Fellow •  
David Fenton •  
Anthony Fernandes •  
Maria Ferrarello •  
Livia Figa-Talamanca •  
Francesco Filippi •  
Frances Fitzgerald  
Franz Flotzinger  
Timothy Floyd •  
Vincent Flynn  
John Foley  
Birgitte Fonn •  
Frank Ford  
Olwen Ford  
Veronique Forge  
Martin Forman •  
Anthony Foster •  
Gwladys Fouché •  
Judith Fox •  
Gino Franco •  
John Freeman •  
Stephan Freh •  
Pamela Furness •  
Gillian Futchner •  
Reverend Bernard Gales  
Emile Galipeau •  
Christophe Gante  
Dilys Gardiner •  
Roger Garratt  
Rita Gastaldi  
Michael Gates •  
Georgios Gatopoulos • •  
Gillian Gibbons •  
Syed Gilani •  
Isabella Gillies  
Philippe Giraudon  
Michael Gitsham •  
Mary Glass •  
Brijinder Gobindpuri •  
Charlotte Goldman •  
Maria Gonzalez Gigante •  
Stuart Goodman •  
Roderick Goodyer  
Robert Gool •  
Andrew Gordon  
Dimitra Goudoufa •  
Caroline Grace  
Carol Graham  
David Graham  
Brian Granger •  
Jeremy Gray  
Andrew Green  
David Green •

Edmund Green •  
Eleanor Green •  
Gerald Green •  
Professor Steven Greer •  
Elizabeth Gregory •  
Michael Griffiths •  
Julien Grizivatz •  
Paul Groden •  
Nicolas GrosPierre  
Vivienne Gross  
Vassiliki Groumpou  
Charles Gundy  
Ciaran Gunne Jones •  
Ignacio Gutierrez Hevia  
David Gwilym-Williams •  
Roderick Haig  
Derek Hall •  
Malcolm Hall  
John Halstead  
Judith Hammond  
Catherine Handley  
David Hando  
Dorothy Harbord •  
Fiona Harford  
Prudence Harris Watson  
Elizabeth Harris  
John Harris •  
Mark Harris •  
Dr Mark Harris  
Beresford Harrison •  
Sarah Harrison •  
Peter Harte  
Nicholas Harvey •  
Rowan Harvey •  
Imran Hasan  
Robert Haselden •  
Suzanne Hasselle-  
Newcombe •  
Petter Hatlem  
Maria Hatzipetrou •  
George Hawthorn •  
Kenneth Hayward  
Brian Head •  
Fabian Heller •  
Ronald Henderson •  
Roman Henry •  
Donald Hepburn •  
Janet Herian •  
Sophie Heyman •  
Henry Hibbs  
Henry Hilton  
Mary Hilton-Jones •  
Judith Hindes •  
Carol Hinds  
Liliana Hiris  
Elizabeth Hock •  
Kevin Hogan •  
Peter Holden •  
Peter Holgate •  
Sally Holloway •  
Walter Holmes  
Mariken Holter •  
Shauna Honey •  
Gregory Hooker •  
Adelita Hooper •

Margaret Hooper •  
Judith Hopkins  
Keir Hopley •  
Yussuf Hosein  
Graeme Howard •  
Ronald Howlett •  
Jill Hoyle  
Ruth Hradsky •  
Professor Colin Hughes  
John Hulley •  
Stephen Hunt •  
David Hunter •  
Mokbul Hussain • •  
Tanveer Hussain •  
John Hutchinson •  
Huma Ijaz •  
Dr Janet Imlah Collett •  
Rachel Infield  
Gareth Ireland •  
Charalambos Issaias  
Kenneth Jackson •  
Peter Jackson •  
Noneen Jacques •  
Liz Jagg •  
Derek Jakes  
Blaz Jakic •  
Dorothy Jameson •  
Priti Jobanputra •  
Ian Johnson  
David Jones  
Sarah Jones •  
Peter Jones •  
Roy Jones •  
Russell Jovett •  
Reverend Dr Peter Jupp  
Johanna Jussila •  
Gerhardt Kalterherberg •  
Dr Muhammad Kamlin  
Anupama Kapila  
Christina Karaolidou •  
George Karaolis •  
Bozenna Kart •  
Konstantinos Katechos •  
Paraskevi Kawada •  
Richard Keep •  
Winifred Keeves •  
Antony Kelly •  
John Kelly •  
Kevin Kelly  
Stephen Kelly •  
Joan Kennedy •  
Stephen Kennedy  
Joel Kenrick •  
James Kent •  
Amit Khanna •  
Milan Khatri •  
Donald King •  
John King •  
Pamela King •  
Benyl Kingsbury •  
Iosif Klironomos  
Ryan Kloster •  
Barbara Kolator •  
Dr Emmanouil Kolezakis  
David Kreikmeier-Watson •

Martin Kristiansson •  
Susan Kumleben  
Stephen Kwasi Bediako •  
Elisabeth Kyral  
Anna-Maria  
Kyriakopoulou  
Sevastiana Lagonika •  
David Lamb •  
David Lamb •  
Geraldine Lamb •  
Aynsley Lammin •  
Kirsty Lang  
Pierre Languetin  
Dr Heather Lannin • •  
Donald Last •  
Lour Latimer  
Richard Law •  
Anthony Lawton  
Alexander Lazanas •  
Dr Stepana Lazarova •  
Graham Leamy •  
Michael Lebrecht •  
Professor Ming Lee  
Marshall Lees •  
Nadine Lennox •  
Wilson Leung •  
Dr Timothy Leunig •  
Dr Michael Levin •  
Andrew Levy •  
Nathan Levy  
Philip Levy •  
Ann Lewis •  
Edward Lewis  
Margaret Lewis  
Terence Lewthwaite •  
Kristin Liabo  
Ramona Liberoff •  
Alberto Lidji • •  
Robert Lightfoot •  
Richard Lingham •  
Janne Lipponen •  
Geoffrey Lipscombe •  
Dr Erik Lithander •  
Pamela Llewellyn •  
Catherine Llewellyn-  
Smith •  
Patricia Lloyd-Green  
Christopher Lock •  
Dr Louise Locock •  
Bryan Long •  
Yves Longchamp •  
Angela Lorimer •  
Rebecca Lunn  
Hilary Makepeace •  
Yuliady Maleke  
Alexander Nizan •  
Shahrazad Nooryani  
Dr Sarah Norell  
Dr Jorge Nunez Ferrer  
Kwame Nyamah  
John Nystrom  
James O'Grady •  
Dr Mathieu O'Keefe •  
Ann O'Kelly •  
Christopher Oates  
Ikponmwo Obaseki  
Orhieoghene Oddin •  
Andrea Oglietti •

June Martin •  
Edward Masters •  
Jean Mathieson •  
Maureen McAlindon •  
James McAllister  
Sandra McAvoy •  
Paul McCabe •  
Michael McGhee  
Caroline McGraw •  
Professor Ronald McQuaid •  
Charles McGibney •  
Victoria Mckenzie-Lunn • •  
Kenneth Mears •  
Patricia Mellor  
Viola Mellor  
John Mesher •  
Socrates Metaxas  
Mohamed Meyassar  
Barbara Meynert •  
Peter Middlehurst •  
Christopher Miles  
Julia Miles •  
Oliver Miles  
Nicholas Millar •  
Anthony Milnes •  
Rosario Mincher •  
Richard Minns  
Lea Misan-Dery  
Punit Mistry • •  
Brian Mitchell •  
Christian Mogge •  
Hélène Montefiore  
Dr Charles More  
Dr Jacob Moreh  
Catharine Morgan  
Ivor Morgan  
David Morris  
Samuel Moulin  
Abhijeet Mukherjee  
Zane Murdock  
Penelope Murphy •  
Katherine Nairne •  
Clive Narrainen  
Brian Navin •  
Dr Nicholas Nedzynski • •  
Stephen Newell •  
Frances Newman Taylor •  
Sandra Newton •  
Rosalind Niblett •  
John Nicholson  
Professor Pier Nicola •  
John Niotis •  
Alexander Nizan •  
Shahrazad Nooryani  
Dr Sarah Norell  
Dr Jorge Nunez Ferrer  
Kwame Nyamah  
John Nystrom  
James O'Grady •  
Dr Mathieu O'Keefe •  
Ann O'Kelly •  
Christopher Oates  
Ikponmwo Obaseki  
Orhieoghene Oddin •  
Andrea Oglietti •



● Member of staff ● Friends and Family donor ● Reunion donor ● Current student \* Given to the Annual Fund for six years or more



## Penguin Club

Thank you to students and graduates of the last five years who have made a donation of between £20 and £99 to the Annual Fund during the last financial year

Twenty eight Penguin Club gifts allow the Annual Fund to enhance the student experience by providing funds to student events such as LGBT Pride week which will take place in November.

### Penguin Club members

Malik Ali●  
Jane Appleby●  
Baha Arab●  
Ifigeneia Asimaki●  
Peter Barton●  
Natalie Black●  
Margaret Bolter●  
Vasileios Bougioukos●  
Judith Bretthauer●  
Alexander Bukh●  
Dr Vassilia Chatzidakis●  
Wen-Te Chiang●  
Lauren Cox●  
Bastiaan De Goei●  
Zehra Dislioglu●  
Lan Feng●  
Charlotte Gerada●●  
Anton Harder●  
Antigone Heraclidou●  
Michael Hess●  
Thomas Hitchings●  
Suneal Housley●

Lavinia Hoyos●  
Hajime Isozaki●  
Robert Kay●  
Ali Khaki●  
Daniel Knapp●  
Arber Koci●  
Dr Naonori Kodate●  
Chantal Lawrence-Carr●●  
Nicolas Macke●●  
Bhavish Mahtani●  
Daniel Marriott●  
Siri Mikalsen●  
Hashina Nagar●  
Wilhelm Nehring●  
Helen O'Neill●  
Myrto Papadopoulou●  
Christina Perdiki●  
Josefin Saeger●  
Constantinos Saragkas●  
Naimish Shah●  
Daniel Sheldon●●  
Elliot Simmons●  
Alexander Small●

Sakkapol Vachitimanont●  
Maximilian von Wallenberg●  
Christoph Wagner●  
George Wetz●●  
Andre Wiedmann●  
Hannah Williams●●  
Simon Yu●

### LSE Centennial Fund (USA)

Sarah Beard●  
Elizabeth Darnall●  
Andrew David●  
Jennifer Dellegrazio●  
Katie Dimancescu●  
Christopher Dove●  
Margaret Harbin●  
Charles Joiner●  
Lawrence Miller●  
John Moellering●  
Talia Parnass●  
Danielle Taylor●  
Ryan Weeks●  
Nora von Ingersleben●

### LSE Foundation Canada

Roumen Grozev●

Three Anonymous Donors

Our Donors





# 2 years down: 1 to go

## Make a match. Make a difference

The matched funding scheme, introduced by the UK government in 2008, is in its final year. Any gift made before 31 July 2011 will benefit from a 3:1 match from the government, which means LSE will receive an extra £1 for every £3 you donate. If you are a UK tax payer, Gift Aid will be applied to your gift before the match, making your gift even more valuable for LSE. For example, a £100 gift to the Annual Fund will be worth £133, or £167 if you are a UK donor and Gift Aid can be applied to your donation. For the duration of the matched funding scheme the Annual Fund is offering discounted rates on their gift clubs, to find out more visit [www.lse.ac.uk/annualfund](http://www.lse.ac.uk/annualfund)

There has never been a better time to support the LSE Annual Fund!

Tel: +44 (0)20 7955 6081 • Email: [annualfund@lse.ac.uk](mailto:annualfund@lse.ac.uk)

# Annual Fund campaigns

Throughout the year the Annual Fund runs a number of campaigns to reach as many of our international community of alumni, governors, parents, staff and friends as possible. In the last year we contacted over 45,000 alumni, governors and parents by mail, raising nearly £350,000 in donations. We also emailed over 50,000 alumni in our end-of-year email campaign, which helped us in making up the last £50,000 needed to surpass the Annual Fund target of £750,000. In addition to these campaigns the Annual Fund has a team of student callers as well as a Reunion Giving Programme and Friends and Family Programme. This year the Annual Fund also received support from donors who sponsored staff member, James Driscoll, to run the Paris Marathon.

## Calling Programme

This year our dedicated team of student callers made thousands of calls to LSE's international community, raising over £120,000 in vital donations. Nearly half of all of the Annual Fund's donors make their gift via the calling programme. The calling programme offers our alumni the opportunity to hear first hand about the benefits of their generous support from our students. Our student callers are also able to update alumni on the latest developments at the School and give them an insight into how life at the School has changed over the years.

Our student calling team includes both undergraduate and postgraduate students and is representative of the School's international composition. We would like to take this opportunity to thank all of our callers for their hard work this year.

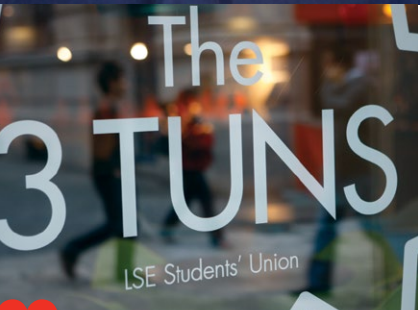
*Annual Fund calling has taken me on a real journey, teaching me so much about the varied and fascinating alumni who have attended such a prestigious university. It feels wonderful to raise much needed funds for an institution that has given me so much.*

**Alice Sinclair** (BA Anthropolgy) Annual Fund caller

Community







## Reunion Giving Programme

This year the School invited a record number of alumni back to campus to celebrate their reunions. Those attending join the hundreds of alumni that have come back to campus to reminisce about their time at LSE and to reconnect with old friends and the School. Each year the reunion classes are invited to make a class gift to mark their reunion and to invest in the School's future.

This year those graduating between 5-10 years ago were invited back to LSE to celebrate their reunion anniversary. The classes of 2000-04 celebrated their reunion on 9-10 July 2010. The participating classes marked the occasion of their reunion and their commitment to LSE by participating in the Reunion Giving Programme. As of 31 July 2010 the classes of 2000-04 had given a total of £25,533 to the Annual Fund in class gifts.

The School is extremely grateful to all our reunion donors and is delighted that so many of our most recent alumni have chosen to make a gift to LSE so soon after graduating.

## Friends and Family Programme

In 2009-10 59 parents of current students chose to make an investment in student life on campus by making a gift to the School through the Friends and Family Programme. The programme aims to support LSE and its students and to involve the friends and families of LSE students in the life of the School.

The Friends and Family Programme is currently seeking £100,000 in support for the Careers Information Library, a vital resource for LSE's 9,000 plus student body, housing reference information to help students through all stages of career planning. The library will occupy almost half of the top floor of the New Students' Centre, which is due to be completed at the end of 2012.



## Paris Marathon 2010

On 11 April 2010 James Driscoll, LSE Donations and Finance Administrator, ran the Paris Marathon on behalf of the Annual Fund. It was James' first marathon and he managed to complete it in an extremely respectable 3 hours, 28 minutes and 58 seconds, achieving his target of finishing the race in under 3 hours, 30 minutes.

Attracting sponsorship from over 100 alumni, staff and students of the School, as well as friends and family members, James raised over £3,400 for the Annual Fund. James' bid to run the Paris Marathon on behalf of the Annual Fund was the first time an individual had sought sponsorship for the Annual Fund and the appeal appeared to capture the imagination of many new donors. Almost 70 per cent of donations received in support of James were made by alumni who had never previously supported the Annual Fund.

Following the success of the campaign, LSE is hopeful members of our alumni community will participate in other sporting events on behalf of the Annual Fund. Please contact the Annual Fund team at [annualfund@lse.ac.uk](mailto:annualfund@lse.ac.uk)



Community



For more information, contact:

**Annual Fund**

Office of Development and Alumni Relations  
The London School of Economics and Political Science  
Houghton Street, London WC2A 2AE, UK

Tel: +44 (0)20 7955 6081

Fax: +44 (0)20 7955 7567

Email: [annualfund@lse.ac.uk](mailto:annualfund@lse.ac.uk)

**[www.lse.ac.uk/annualfund](http://www.lse.ac.uk/annualfund)**

The information in this leaflet can be made  
available in alternative formats, on request.  
Please email: [annualfund@lse.ac.uk](mailto:annualfund@lse.ac.uk)

This report is printed on recycled stock

Design by: LSE Design Unit ([www.lse.ac.uk/designunit](http://www.lse.ac.uk/designunit))

Photography: Nigel Stead, LSE Photographer and LSE's Office of  
Development and Alumni Relations

The London School of Economics and Political Science is a School of the  
University of London. It is a charity and is incorporated in England as a  
company limited by guarantee under the Companies Act (Reg. No. 70527).

The School seeks to ensure that people are treated equitably, regardless of  
age, disability, race, nationality, ethnic or national origin, gender, religion,  
sexual orientation or personal circumstances.