



Lord Dahrendorf honoured by Stiftung Mercator Foundation



Dr Hilla Limann, President of Ghana (BSc Government 1960), with Lord Dahrendorf, June 1981

LSE, in partnership with the Hertie School of Governance in Berlin (Hertie School), has received support totalling €478,000 from Stiftung Mercator. Mercator is one of the largest private foundations in Germany and pursues clearly defined objectives in its thematic clusters of integration, climate change and arts education. Europe is, besides China and Turkey, one of Mercator's regional areas of focus. The donation has been made in support of the organisation and delivery of the first Dahrendorf Symposium, which will bring together leading academics, policy makers and the media from across Europe and beyond, and in doing so, honour the legacy of former LSE Director Professor Lord Ralf Dahrendorf.

Lord Dahrendorf was the eighth director of LSE between 1974 and 1984, having previously won a Leverhulme scholarship to study there in the 1950s, and subsequently obtaining a doctorate in 1956 for his thesis on unskilled labour in British industry. There followed a prolific academic career in a number of institutions throughout Europe and North America. During his tenure as LSE's Director, he secured the School's transition into a modern arena whilst retaining LSE's tradition of ensuring that academic research achieves impact on policy makers and leaders for the betterment of society.

Lord Dahrendorf was also a politician in the UK, Germany and Brussels. Upon being elevated to the House of Lords, he symbolically chose the title of Baron Dahrendorf of Clare Market because of its reputation as the heart of the LSE campus and its association, in the nineteenth century, with the abject poverty that LSE's Fabian founders sought to eradicate. His choice of title encapsulated the sense of responsibility that he felt as a publicly-engaged and active intellectual and forms the ethos and goals of the proposed symposium.

The symposium will take place in Berlin on 9-10 November, an iconic date which marks the fall of the Berlin Wall in 1989 and with that, the commencement of the reunification of Europe. Its main theme will be **'Changing the debate on Europe: moving beyond conventional wisdoms'**. This reflects both Lord Dahrendorf's view that the intellectual should 'pose the questions that otherwise no one dares to ask' and his consistent focus on Europe as

the ultimate space with the potential to achieve real and relevant democracy and an 'open society'.

The event will consist of five research collaborations bringing academics from LSE and the Hertie School to work together on key issues facing Europe today:

- Europe as a political space of contestation and conflict management, led by Professor Damian Chalmers, head of the European Institute, LSE;
- Europe as a vision, and a system of cultures, values and identities, led by Professor Alina Mungiu-Pippidi, professor of democratisation studies, Hertie School;
- Europe as a political economy, led by Professor Anke Hassel, professor of public policy, Hertie School and senior visiting fellow at the European Institute, LSE, and Professor Mark Halleberg, professor of public management and political economy at Hertie School;
- Europe as a social space for civil society, led by Professor Chetan Bhatt, director of the Centre for the Study of Human Rights, LSE, and Dr Hakan Seckinelgin, senior lecturer in social policy, LSE;
- Global Europe, led by Professor Mick Cox, co-director of LSE IDEAS.

LSE alumnus George Soros (BSc Philosophy 1951, MSc Philosophy 1954) will speak at the Symposium dinner and has previously spoken at the Mercator Foundation's headquarters. Mr Soros has provided support to eastern European civil society through the Open Society Institute, and is said to have been inspired by Dahrendorf's belief that, post 1945, the division of Germany and Europe was a fresh start and an expression of the chaos and conflict of out of which the 'European project' emerged.

The generous support received from Stiftung Mercator has made new research collaborations both within and between LSE and the Hertie School possible, providing an opportunity both to showcase LSE expertise and to develop innovative research on issues facing Europe today. Further, through the first Dahrendorf Symposium, LSE academics will be able to connect with academics, policy-makers and the media from across Europe.



Lord Dahrendorf being interviewed after the fall of the Berlin Wall

In addition, we hope that many of our German-based alumni will be able to attend the symposium. The German Friends of LSE is one of the School's most active alumni groups and we hope this will be the first of many occasions in which their members can participate.

Milestone for New Students' Centre

page 3



LSE confronts the Burning Issue

page 6



John A Paulson supports European Institute

page 7



From the Director



A great deal has taken place at the School since the last edition of *Impact*. I write this introduction as the new Director of the School, a post I took up following Howard Davies' resignation in March.

Over recent months, we have endeavoured to keep you, our key supporters and friends updated on events and no doubt you are aware that the Libyan affair is now the subject of an inquiry under Lord Woolf. We are awaiting the findings and we will ensure that you are informed of the recommendations as and when we are able to do so.

In the meantime let me assure you that the work and life of the School goes on, and as ever we will continue to engage with the world in thoughtful and productive ways.

I am delighted that in this edition of *Impact* we are able to provide you with news of a number of projects that simply would not have been possible without the philanthropic support of our alumni and friends. These include the Dahrendorf Symposium, the new Chair in European Political Economy, the new series of lectures designed to broadcast LSE research to global audiences and the work we are undertaking to improve the campus for our students. All these, and more besides, provide excellent examples of the stimulating environment that the School continues to create.

I would like to thank you for the supportive and positive feedback that has been received from so many of you over the past few months, and express my gratitude on behalf of all at the School for the support that you so generously provide.

Professor Judith Rees, Director of LSE

Answering the Big Questions

In 2009, the John Templeton Foundation awarded a major grant of over £1million to fund a new research programme entitled "God's Order, Man's Order and the Order of Nature", jointly led by Professor Nancy Cartwright at LSE and Professor Eric Watkins at the University of California, San Diego. The grant was made to support a four-year research project, delivered through collaboration between the Philosophy Department at the University of California, San Diego and the Centre for Philosophy of Natural and Social Science (CPNSS) at LSE.

The John Templeton Foundation, which is based in the US, supports research into the 'Big Questions' of human purpose and ultimate reality. They seek to encourage civil, informed dialogue among scientists, philosophers and theologians, and between such experts and the public at large, for the purposes of creating a common understanding through stripping down the language used in order to foster new insights.

The project focuses on the recent challenges, by detailed studies in the history, philosophy and sociology of science, to the long-held image of nature as governed through and through by universal laws, and on what the breakdown of the idea of a totally 'well-ordered universe' implies for the Christian natural theology that has marched hand-in-hand with this image since the Scientific Revolution of the 16th and 17th centuries.

This major support received from the John Templeton Foundation cements the connections between LSE and the University of California, San Diego, and also provides a unique opportunity to work with academics who bring complementary interests and strengths from around the world. The research team includes academics from Washington University in St Louis, Missouri, the Fuller Theological Seminary in Pasadena, California, the University of Oxford, the University of Durham, the University of Aberdeen, Wheaton College in Wheaton, Illinois and the Theodor Schniller School in Jordan.

This research programme has rapidly established itself as a key part of the work of CPNSS at LSE which, traditionally, has been particularly strong in fostering interdisciplinary and international research collaborations. The generous award from the John Templeton Foundation reflects and builds upon the success of this innovative and global approach.



Milestone for New Students' Centre

The New Students' Centre has reached an exciting phase in its development. Having secured planning permission for the building in October 2010, in May 2011 the School began the task of making the site ready to realise the vision of a building, sitting at the heart of "Contemporary Westminster", that will radically transform the campus and the student experience.

Former users of the St Phillips buildings, including the Medical Centre, have relocated to other parts of the LSE campus and demolition work is currently underway. It is envisaged that the site will be cleared and ready for construction towards the end of 2011. With the arrival of engineers and architects on site, students, staff and visitors are beginning to see the physical realisation of a project that will reinvigorate the campus and reinforce LSE's reputation as a world leading social science institution that puts students at the heart of everything it does.

For those who are interested in following the progress of the New Students' Centre more closely there is a website which tracks the project (lse.ac.uk/supportinglse/nsc).



It hosts a number of interesting features including a fly-through of the building which gives an excellent appreciation of the fantastic interior space as well as plans and a history of the development.

Julian Robinson, director of estates, said: "The current work on the New Students' Centre is the latest milestone on this strategic investment in the School's future. It forms the most visible phase to date for the LSE community, who await the prospect of this innovative design being realised with enthusiasm."

There are many and varied opportunities for friends of the School to become involved in supporting the New Students' Centre, both the building itself and areas within.

Please contact Helen Green at h.r.green@lse.ac.uk or on +44 (0)20 7955 5233 for further details.

Digital sketches of the demolition work of the New Students' Centre:

- ① *The St Phillips building*
- ② *A bridge connecting the two buildings is removed*
- ③ *The site is enclosed in scaffolding as the buildings are carefully demolished*
- ④ *A new foundation is laid for the next phase of construction*
- ⑤ *The New Students' Centre seen from the Old Building*



Scholarly developments

There is no greater endorsement of the transformative power of an LSE education than when a supporter of the School chooses to invest in future students by making the gift of a scholarship.

Scholarships are important not only to the students who receive them but also, more generally, to the student body because ensuring that students are exposed to a diversity of backgrounds and views is an integral part of the rounded experience that LSE seeks to provide.

Since the last issue of *Impact* went to press we have seen several new and renewed scholarship gifts, demonstrating the commitment and generosity of LSE's alumni and friends to making the School accessible to as many academically gifted students as possible.

The stories on these pages are designed to give just a flavour of recent scholarship news, and we are grateful to all supporters of the School who provide generous support to scholarships.



A group of scholars enjoying the Donors and Scholars reception

Scholarship opportunities for students from China

The Lees Charitable Foundation has pledged £750,000 to LSE for the creation of the endowed Lee Family Scholarship. The Lees Charitable Foundation is an education-focused philanthropic organisation based in Hong Kong and has previously supported endowed scholarships at other institutions.

This generous scholarship fund will provide support in perpetuity for a student each year from either Hong Kong or mainland China to study at Masters level in the Departments of Finance, Economics or Accounting. The scholarship will begin in 2012 and will cover all of the recipient's tuition fees as well as making a contribution towards living costs.

Dr Richard Lee (pictured) said: "We believe strongly that investing in education is critical for the future. LSE's global reputation for producing, moulding and educating the prominent global figures of tomorrow makes it the perfect place in which to support scholarships. Giving young bright students who otherwise would lack the financial means to attend such a prestigious institution, is something that is not only worthwhile in of itself but also in creating a global, educated, forward looking and talented elite."



Standard Bank support for students in the Department of Finance

LSE is delighted to announce the receipt of a generous scholarship from Standard Bank Plc for students in the Department of Finance. The scholarships will be awarded over the next three academic years and offer the opportunity of funding to students from developing and newly industrialised countries to study Masters programmes within the Department of Finance.

There are up to eight scholarships available for 2011-12 which will cover all of the students' tuition fees, as well as provide £500 towards course materials and up to £1,500 towards travel costs to London to each

successful candidate. The scholarship is aimed at providing opportunities for students who currently do not have the financial means to pursue further studies of this nature.

"We are extremely grateful to Standard Bank for supporting our students in this way," said Professor David Webb, head of the Department of Finance. "These scholarships will give the opportunity for students who would normally have been unable to attend LSE to study in a world class environment and will also help to further enrich the cultural diversity of our MSc programmes."

Stelios Scholar scores runner up in Student of the Year



Stelios scholar, Vyacheslav (Slava) Polonski (pictured above), a BSc Management student from Ukraine, has achieved the runner up position in the International Student of the Year Award, the UK's biggest international student competition. His inspirational story about student life in the UK won him the prize ahead of all but one of the 1,200 students from 118 countries who entered the competition.

This year marked the British Council's ninth annual International Student Awards, a major initiative that shines the spotlight on international students and their contributions to life in the UK. To enter the competition international students were asked to write a personal letter home in English, detailing the out-of-class achievements that help make their time in the UK so rewarding. Slava's letter was judged to be one of the best.

Martin Davidson, chief executive of the British Council, said the entrants' letters home were both poignant and inspiring: "The students have immersed themselves in life in the UK and are making a huge contribution not just to their campuses but to the wider community."

The Stelios Scholarships were established in 2005 by Sir Stelios Haji-Ioannou (BSc Economics 1987), founder and owner of easyGroup, to help ten undergraduate students a year, for ten years, to study at LSE. Stelios was delighted to hear of Slava's award, saying: "We are incredibly proud of Slava and his impressive achievements – including winning a top spot in these awards. He is an exemplary ambassador for the Stelios Philanthropic Foundation and I'm sure he'll go far!"

Deutsche Bank invest in learning at LSE

Deutsche Bank have pledged £390,000 towards a PhD fellowship programme to provide six fellowships that will support outstanding PhD students in pursuing research in risk management and capital management. This is in addition to the Lord Dahrendorf scholarships, which they also support, that are awarded to ten postgraduate students in the Department of Finance each year.

Pole position for new Santander Scholarship

Santander have made a gift of a Formula Santander Scholarship to LSE, which will be awarded to one postgraduate student at the School in the 2011-12 academic year. The scholarship forms part of the second round of the Formula Santander Scholarship programme, which is designed to enable mobility of students from Brazil, Spain and the UK. It was made in addition to a larger programme of support that the School receives from Santander which enables the School to award nine postgraduate scholarships and a number of travel awards each year, as well as facilitate entrepreneurial activity.

Thank you

Thank you to all of the School's new and continuing scholarship supporters. If you are interesting in finding out more about supporting a scholarship at LSE, please contact Letty Probett at l.probett@lse.ac.uk or on +44 (0)20 7852 3685.



John Hedges, Santander Universities, with the 2010-11 Santander Scholars

Continuing scholarship support

We are pleased to bring you news of the following scholarships that have been renewed for the 2011-12 academic year and beyond.

The Kadas Family Charitable Foundation has chosen to renew its support for the Kadas Scholarships which will continue to support undergraduates from central European countries with the academic ability but without the necessary funds to attend the School.

Cato Stonex (BSc International Relations 1986), has renewed his support for the Cato Stonex Scholarships.

These scholarships began in 2007 and have since supported two students over three years. The renewal of support by Mr Stonex means that they will go on to support a further four undergraduate students from the UK or the EU, two of whom will study in the Department of Anthropology and two in the Department of International Relations.

Since the beginning of 2011 there has also been renewed support for the Central European Scholarship, the FM Underhill Scholarship, the Alan Elias Scholarship and the Highspen Scholarship.

LSE confronts the Burning Issue

Three of LSE's eminent academics tackled topical and contentious issues in a novel and exciting approach within LSE's extensive public events programme in May.

The Burning Issue lecture series saw Professor Conor Gearty talk about human rights and why they are important; Professor Tim Allen examine the facts, the failures and the future of humankind's fight against parasites, one of our most endemic invisible enemies; and Professor Emily Jackson confronting the issues, contradictions and confusion around assisted suicide.

LSE's public events programme consists of around 100 lectures each term and plays a key role in enabling the public to engage with the School and its work, and ensuring that leading academics and policy makers from around the world are publicly accessible. Over 65,000 people attended around 270 events over the course of the 2009-10 academic year alone, and an increasing number of public lectures are now also available as podcasts or videos on the School's website for all to access and enjoy.

In a departure from this approach, the Burning Issue series was devised as a recorded lecture series intercut with location-filmed reports, which offered audience participants the chance to take part in live and interactive debate around the topics discussed. It is hoped that the series will now be picked up by a television broadcaster.

The LSE Annual Fund and Cato Stonex (BSc International Relations 1986) kindly made gifts towards the Burning Issue lectures, and LSE is extremely grateful for their generous support.

For more information about supporting LSE's public events programme, please contact Letty Probett at l.probett@lse.ac.uk or on +44 (0)20 7852 3685.



Professor Tim Allen tackles a burning issue

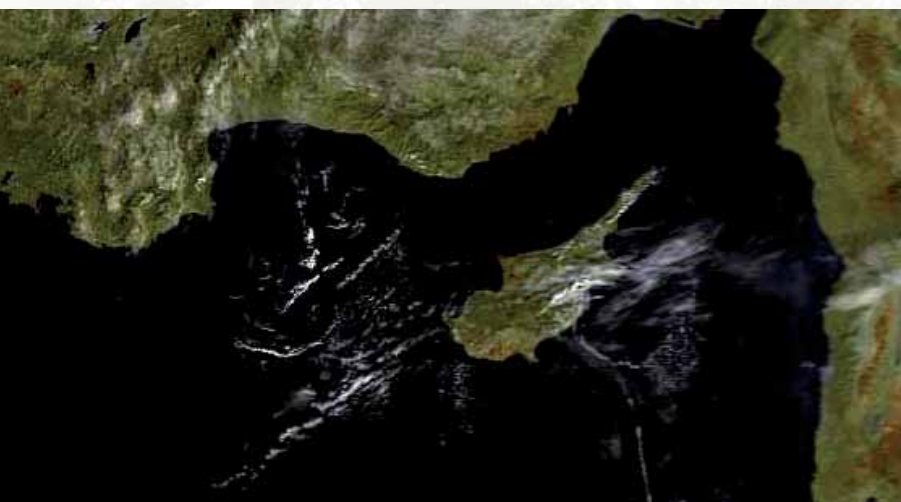
Research into contemporary Cyprus enabled by Andreas Hadjiyiannis

In February 2011, friend of LSE Andreas Hadjiyiannis pledged £500,000 to LSE to create the Andreas Hadjiyiannis Research Fellowship on Contemporary Cyprus within the School's Hellenic Observatory. A Cypriot based in Greece, Mr Hadjiyiannis is the founder of Cyprus Maritime Ltd and a prominent member of the country's shipping industry.

The five-year research programme will investigate the current issues affecting Cyprus's political and economic relations with the European Union, south east Europe and the Middle East, and will link into LSE's research programme on south east Europe (LSEE). Cyprus's unique geographical position means that the issues facing it, which include security, relations between the Republic of Cyprus and the Turkish Cypriot community, adaptation to EU accession and economic development, make this research area significant for the entire continent of Europe.

The fellowship will begin in 2011 and run until 2016. It will be occupied by a leading academic based in the LSE Hellenic Observatory which has, since its establishment in 1996, become one of the foremost centres in the world for the study of modern Greece. With this fellowship the observatory will now be able to expand its expertise into the complementary and related field of contemporary Cyprus studies.

Mr Hadjiyiannis said: "I am proud to support LSE's efforts to build on the existing work of the Hellenic Observatory into this new and important research area with Cyprus at its heart."



John A Paulson supports the study of Europe's dynamic political economy at LSE

John A Paulson (pictured below), founder of US-based investment management firm Paulson & Co, donated £2.5 million to LSE in January 2011 to endow the John Paulson Chair in European Political Economy within the School's European Institute, whilst at the same time committing a further £250,000 to establish an associated research programme on Europe's unique role in the post-crisis financial world.



Once appointed, the chair will be located in LSE's European Institute which applies a broad range of academic disciplines to understand Europe's complex and developing role in the world. It is hoped the holder of the chair will be able to take up their post by September 2011.

John A Paulson founded Paulson & Co in 1994 and the firm today manages approximately \$36 billion. As a Baker Scholar he received an MBA, with high distinction, from Harvard Business School and graduated *summa cum laude* in Finance from New York University. Mr Paulson serves on the Board of Trustees of both New York University and the Spence School, as well as the Dean's Advisory Board of the Harvard Business School.

Mr Paulson said: "I am honoured to partner with LSE to support critical research needed to ensure a stable and enduring European financial system."

LSE is well placed to deliver these goals due to the European Institute's unique strengths, London's place as a world financial centre and the way in which LSE combines global reach with significant public and policy influence.

The European Institute is one of LSE's 23 academic departments and was founded in 1991. Headed by Professor Damian Chalmers, it is home to 25 academics who work across the fields of politics, economics, geography, history, political economy, law, philosophy and international relations. It was ranked first for research in the UK's Research Assessment Exercise and teaches about 200 masters students and 30 doctoral students every year.

Europe remains the world's largest trading bloc, but faces serious challenges, particularly due to the current difficulties in the eurozone. As a result, this donation is extremely timely as the work of the chair and research programme will aid policy makers as they seek to restructure their economic architecture and put the euro on a surer footing. It will enable scholars to examine the causes and the consequences of the crisis in a systematic and considered way and pass their knowledge and restructuring recommendations on to decision-makers.

The chair will be occupied by a leading academic who combines expertise in finance, policy and the European Union with a reputation that speaks to a global audience. Among the areas of research that the new post will direct are the emerging European Union arrangements of fiscal re-stabilisation, financial rescue and economic governance and the wider interplay between these, the future of the euro, European competitiveness, and the political economy of European integration.



Thank you

2010/11 was a busy year for the School. We welcomed back friends and alumni of LSE for a variety of events which ranged from reunion events to the annual Donors and Scholars reception and the launch of the Benefactors' Board dinner. We hope that the snapshots below give a brief flavour of the wide array of activities the School organised over the last year for our supporters and alumni.



A reception for the recipients of the Lord Dahrendorf scholarship took place on 29 November 2010, providing a chance for scholars to meet representatives of supporters of the scholarship, Deutsche Bank.



Dr Pauline Avigès-Graham (BSc Accounting and Finance 1965) with the 2010-11 Pauline Graham Scholarship for African Women recipient, Fauziatu Umar, at the annual Donors and Scholars Reception on 9 March 2011.



Firoz Lalji, President and CEO of Zones Ltd, with Peter Sutherland, Chairman of LSE, are pictured here at a dinner to celebrate the launch of the School's Benefactors' Board which took place on 1 February 2011.



Professor Ruth Kattumuri, LSE Asia Research Centre, and Anwar Hasan, managing director of Tata Ltd (UK), converse at the School's Benefactors' Board dinner. Through their charitable trusts, Tata have been a strong supporter of LSE for many decades since 1912.



The Stelios scholars held the first of many social events at the School on 23 March 2011. They invited former scholars and representatives from the Stelios Philanthropic Foundation to an informal reception in the Senior Common Room.



On 10 May 2011 LSE welcomed back over 220 alumni to the School for the 50 Plus Reunion. Attendees enjoyed a memorable day of talks and discussions, tours, a lunch, a closing reception, and, most importantly, a chance to catch up with friends and former classmates.

For more information on any of the projects featured in this newsletter, please contact the Office of Development and Alumni Relations on +44 (0)20 7852 3685 or at I.probett@lse.ac.uk



Printed on 100% recycled stock

LSE is committed to increasing accessibility to the School and other leading global institutions to ensure that talented students from across the world have an even opportunity to have an active choice in their university education.