



**LSE**

Annual Fund

**LSE Annual Fund report to donors 2011-12**



# Welcome



It is my pleasure to report on an excellent year for the LSE Annual Fund. In 2011-12 we have extended our support to more projects than ever before, helping to bring about positive change across the School.

By awarding funding to 93 initiatives – an increase from 78 last year – the Annual Fund has sought to ensure its impact is felt at all levels of the LSE community. This unprecedented level of project support has only been made possible by you – 2,656 people collectively raised £729,138 in the first year following the end of the Government's matched funding scheme.

A vibrant Annual Fund is essential for LSE to maintain its reputation as a world class university at the forefront of teaching and research excellence. The Annual Fund's flexibility is its strength; your unrestricted support enables it to respond to projects which otherwise might not receive financial backing but through funding can achieve great things.

This has been a year of "firsts" for the Annual Fund, and not just in the record number of grants awarded and the level of funding provided. Notable steps have been taken to help us engage more closely with you, our donor community. In January, our first ever online survey invited donors to respond to questions relating to the Annual Fund, what supporters expect of us, their preferred areas of support and their general approach to philanthropy. The feedback we received will help to shape how we communicate with you and all our donors in future.

One direct result of the survey was a new event introduced to the Annual Fund calendar – our inaugural Donors' Reception, held in June. It brought together donors and beneficiaries for a wonderful evening in LSE's Old Building that demonstrated to supporters the profound impact their gifts have on the School.

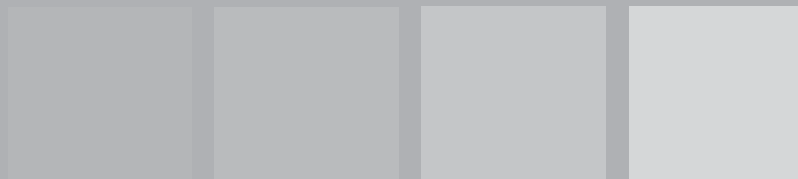
In the following pages we highlight the wide range of projects now improving School life thanks to your support – from initiatives promoting academic excellence to social mobility programmes

ensuring that an LSE education can be enjoyed by the brightest and best students regardless of their financial background.

I hope you will enjoy reading in more detail the positive change that your generosity has made happen. On behalf of the Annual Fund and the people and projects to which it has awarded grants, I express my sincere gratitude to you, our LSE donor community. You made this possible. Thank you.

A handwritten signature in black ink, appearing to read 'Peter Jones'.

**Peter Jones** (BSc Statistics 1964)  
Chair, LSE Annual Fund  
Director's Circle member







## LSE ANNUAL FUND 2011-12

# Overview

Alumni, parents, friends, staff and governors make the LSE Annual Fund what it is – a flexible fund designed to effect positive change at the heart of the School. Through unrestricted donations, you have enabled the Annual Fund to once again have a significant impact on many levels of School life. Thank you.

The generosity of 2,656 donors, whose gifts totalled £729,138, will enable the Annual Fund to support key strategic priorities and projects that might not otherwise receive funding next year.

This year, the average gift was a record £275 (up from £267), demonstrating the level of commitment donors have for the Annual Fund and its ambition to ensure that LSE continues to attract the best and brightest students and enhance every aspect of life at the School. LSE is privileged to have a broad base to its

donor community. The School's global reach and its strong international alumni network are reflected in the geographic breakdown of gifts. Donations were received from 66 countries, with 44 per cent of donations received from outside the UK.

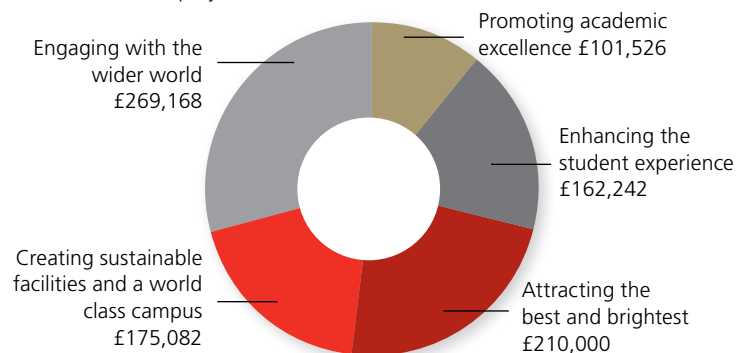
The LSE Centennial Fund, which raises unrestricted donations in the USA, has once again contributed generously to this total. A fantastic \$291,238 was raised, forming 25 per cent of the total Annual Fund income for the year.

The Annual Fund sought to drive participation at all levels of the LSE donor community. The Penguin Club continues to welcome and acknowledge recent alumni donating £30 or more to the Annual Fund, while donors committing to direct debit plans reached almost 10 per cent of all supporters, enabling us to plan ahead with confidence against expected income.

In 2011-12, 93 projects and initiatives across five priority areas at the School benefited from Annual Fund grants totalling £918,018.

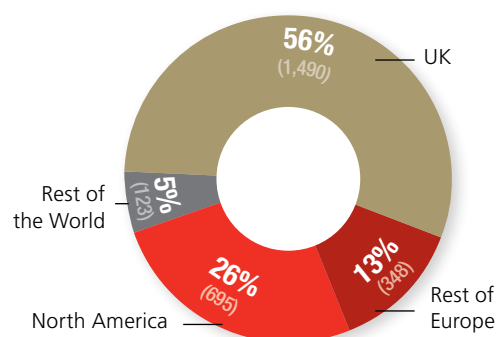
### Areas supported

There were 93 projects funded in 2011-12



### Donors by region

There were 2,656 Annual Fund donors in 2011-12



### Your views count

In 2011-12, the Annual Fund sought to consolidate the growth achieved during the three years of the Government's matched funding scheme by focusing on donor participation.

By 'participation', we mean much more than financial support; the input donors have at all levels of School life is integral to the continued health of the Annual Fund. By better understanding your needs as a donor we can continue to improve how we communicate with you.

In January 2012 our first online donor survey helped to facilitate this process. Current donors for whom we hold a valid email address were asked a series of questions

about their perceptions of the Annual Fund and what they would like it to achieve in the future.

We learned that 47 per cent of respondents give to LSE but not to other academic institutions they attended, while 62 per cent regard student support as a funding priority – a commitment that will remain integral to the Annual Fund through its support of the New Futures Fund.

Respondents have also shaped how we hope to engage with and recognise donors, and informed our future communications strategy to ensure we reach out to the donor community through channels more appropriate to your needs.

### Ensuring a meaningful impact across the School

The Annual Fund Allocations Advisory Group meets three times a year to review applications for funding from initiatives across the School. The group is a representative panel which draws on the expertise and input of alumni, academics, staff and donors who share a deep understanding of LSE.

The members are:



**Peter Jones** – chair, LSE Annual Fund, School Governor, LSE alumnus



**Andy Farrell** – director of finance and facilities



**Professor George Gaskell** – pro-director, School Governor



**Professor Eileen Munro CBE** – professor of social policy, School Governor, LSE alumna



**Jeffrey Golden** – Chair, LSE Alumni Association Executive Committee, School Governor, LSE alumnus



**Fiona Kirk** – director of development and alumni relations

For 2011-12 the group considered 127 quality applications before selecting the final 93 projects chosen to receive grant awards from the Annual Fund. These projects will each make a profound contribution to life at LSE.



**LSE Annual Fund @LSEAnnualFund**  
Reminds me how international LSE is when you speak to alumni from all across the world in just the space of a couple of hours!

**LSE Annual Fund @LSEAnnualFund**  
... some really positive feedback from our American grads. One Econ grad from the 80s remembers his time at LSE as the best in his life!

**LSE Annual Fund @LSEAnnualFund**  
Just had a great conversation with an alum who wanted to learn more about the Hardship Fund. Great support of the Annual Fund tonight!

## REACHING OUT *for support*

In 2011-12 the LSE Annual Fund has reached out by telephone, post and email to over 80,000 alumni, parents, governors, staff and friends of the School to ask for their philanthropic support. The fundraising drive has included the student calling programme, reunion class gifts and the Friends and Family programme, plus mail campaigns in each academic term.

### Calling programme

This year, our team of 25 student callers again had a significant impact on the Annual Fund. Callers reached 6,010 alumni, parents and friends of LSE in 51 countries, raising £277,116 for the Annual Fund.

Students and alumni share a special understanding of School life – and mutual

experiences that transcend generations. In addition to the invaluable financial support that calls generate for Annual Fund projects, they also maintain the link alumni have with the School.

The warmth that those contacted extended to student callers and the lifelong affinity they hold for LSE were once again clear. The callers also gained a great deal from these exchanges and a deeper knowledge of how philanthropy impacts on their own LSE experience, as can be seen from the selected comments tweeted by callers.







### Reunion Class Giving

Class reunions bring together alumni to reminisce with old friends and reunite with LSE surroundings they hold dear. Our Alumni Relations team works with alumni class chairs who lead each reunion and together coordinate a programme of lectures, receptions and tours of the LSE campus.

In the last academic year the School enjoyed two class reunions, for 1995-99 and 1980-84 graduates respectively. Over 300 people attended events in September 2011 and July 2012, with alumni from as far afield as Singapore and Hong Kong travelling to London to be a part of proceedings.

Each class marked its reunion event through a class gift in support of the Annual Fund, resulting in £132,070 raised: the classes of 1995-99 contributing £66,004 while the 1980-84 classes secured a class gift to the value of £66,066.

### Friends and Family programme

The Annual Fund's Friends and Family programme provides parents of undergraduates with the opportunity to engage more closely with the School. Parents are kept up to date with LSE news, invited to the School's termly alumni lectures and are able to benefit from special offers from businesses in close proximity to LSE.

The 2011 Parent Orientation Day, organised through the Friends and Family programme, was held in September. The School welcomed around 300 parents – more than ever before – to campus and for the first time the day was chaired by a parent member.

LSE alumnus Peter Gunn, whose daughter graduated with a law degree in July 2012, welcomed guests and shared his personal memories of LSE, helping to reassure parents that their child was about to embark on one of the greatest experiences of their lives.



As in previous years parents also listened to presentations given by key staff members from around the School, including the director of LSE Careers, the LSESU general secretary and the head of Residential Living amongst others. They also toured the campus and, during a drinks reception, had the chance to meet other members who also had a son or daughter starting at the School.







## PROMOTING ACADEMIC *Excellence*

This year, through the award of £101,526 to 15 projects, the LSE Annual Fund demonstrated its commitment to promoting academic excellence within the School.

The quality of its teaching and research define LSE as a world class institution, and in 2011-12 the School cemented its status as one of the leading social science universities.

The National Student Survey revealed that overall satisfaction scores for teaching have risen more sharply in the past two years at LSE than almost anywhere else – from 76 per cent to 84 per cent.

LSE rose to second place (from fourth in 2010-11) in *The Complete University Guide*

– which measures UK universities against research quality, entry standards, staff-to-student ratios and job prospects – while it was ranked third in both *The Times Good University Guide* and *The Guardian* league tables. LSE graduates also enjoy better career prospects than those of any other UK university; the School is ranked number one for employment in *The Sunday Times* University league table for 2012.

LSE research is nationally and internationally acclaimed – for example School academics have assumed leading roles in meeting the challenges posed during turbulent times for the world economy and in developing solutions that can be implemented at local and global levels.

The Annual Fund supports projects which ensure this academic rigour is maintained and developed across a number of spheres.

## Programme for the Study of Religion and Non-Religion

The Programme for the Study of Religion and Non-Religion, based in the Department of Anthropology, brings together staff and research students from across LSE and the wider academic and policy communities, to focus on issues concerning religion, secularism and “non-religious” practices, beliefs, and traditions.

The programme aims to:

- foster and provide a framework for primary research
- facilitate academic and public discussions on issues relevant to religion, atheism, secularism, humanism and post-humanism
- provide a platform for researchers and stakeholders to showcase and communicate their findings to broader academic, public, and public policy audiences

LSE's new Programme for the Study of Religion and Non-Religion is off to a fantastic start. Research projects are being developed, School-wide discussions are now underway, and our forum events are bringing national and international attention to LSE's role in shaping debates about the relationships between religious and secular beliefs. The week after our launch, we were hailed in *The Guardian* as the go-to place for cutting edge discussion and research. None of this would have been possible without the Annual Fund's generous support. Thank you.

**Dr Matthew Engelke**, programme coordinator, Department of Anthropology



## NetworkED: Technology in Education

NetworkED: Technology in Education is a seminar series organised by LSE's Centre for Learning Technology (CLT) and funded by the Annual Fund. High profile speakers from education, computing and related fields discuss how technology is shaping the world of education.

The series is a springboard to explore and share innovative and lightweight technologies which will in turn inform how LSE teaching can be delivered differently in the future.

This is demonstrated through successful live streaming to a global audience, engaging external communities through social media and embedding YouTube videos into the archived recording to overcome copyright concerns.

Its first year saw five very successful seminars delivering diverse topics. Experts explored how to:

- develop a digital literacy curriculum
- understand the meaning of the internet
- become a digital scholar
- engage with changing students' learning strategies
- push forward the democratising effect of blogging on academic publishing

Obtaining funding from the Annual Fund has helped us try out a range of new technologies for delivering lectures online and bring a range of speakers to LSE. This puts LSE on the map (and Twitter-sphere) as a place for exciting educational technology initiatives.

**Jane Secker**, Centre for Learning Technology



## Awards breakdown

Health Professional Regulation **£23,000**  
Africa International Affairs Programme **£18,000**  
Cold War Studies Programme – Crises and Legacies **£11,908**  
Programme for the Study of Religion and Non-Religion **£10,240**  
LSESU China Development Forum 2012 **£10,000**  
Philosophy in the Public Domain event **£7,050**  
Russian Business Week **£5,500**  
NetworkED: Technology in Education **£4,350**  
The LSESU Polish Economic and Business Forum **£3,000**  
Anthropology of Well-being Conference **£2,958**  
The International Criminal Court and the Meaning of Cosmopolitan Criminal Law **£2,000**  
AMPlify your potential event **£2,000**  
Mobilising intelligently for Rio +20 event **£720**  
Rerum Causae Student Conference and Journal **£500**  
LSESU Economics Society – Student Consumer Price Index project **£300**

## LSESU Economics Society – Student Consumer Price Index

The Student Consumer Price Index Project is a research project run by the LSESU Economics Society which aims to analyse the expenditure behaviour of students at LSE and to provide an estimate of inflation amongst LSE students, as measured by a consumer price index.

It also enables students to implement what they have learned in their courses by taking part in an empirical project, which is especially but not exclusively beneficial to students with some experience of econometrics.

The LSE Annual Fund has made it possible for this project to be a success. Without this funding we would not have been able to collect data and create such a good sample which led to us finding some very robust results. Hence, the LSE Annual Fund turned out to be one of the building blocks of this research project. We hope that this association will continue in the future.

**Shalini Mittal** LSESU Economics Society





## ENHANCING THE STUDENT *Experience*

In 2011-12, the Annual Fund awarded £162,242 to 35 projects across the School which enhance the student experience – an increase from 14 projects in 2010-11.

The “student experience” extends beyond the teaching and research excellence for which LSE is recognised as a world class university and encompasses every aspect of daily life at the School that contributes to LSE students cherishing their time on campus.

Alumni old and new always remember the education they enjoyed and the professors whose lectures inspired them. They also remember with great fondness the social clubs, memberships and events that helped to shape their time at LSE.

With that in mind, the School takes pride in actively ensuring LSE's renowned academic rigour is complemented by a dynamic Students' Union, societies, clubs, facilities and resources that all serve to enhance the student experience.

Societies help in bringing together peers from a range of diverse backgrounds to learn and share perspectives outside the

classroom environment. Clubs offer bonding opportunities that help to forge friendships which span decades.

The Annual Fund provides funding to help these societies and clubs to reach out to students through engaging events programmes, stimulating conferences and improved resources. It makes important changes possible that reflect evolving student needs – such as the digitisation of *The Beaver*, which enables students to read their student newspaper in an easily accessible electronic format on their tablet or PC.

The student experience and facilities campus-wide will also benefit dramatically from the completion of the new Student Centre, which opens in late 2013 and will enable LSESU in particular to offer a broader range of services to students at LSE.



## Disability and Well-being Service film project

With Annual Fund grant support, the Disability and Well-being Service has undertaken a video project with the aim of encouraging disabled students to apply to LSE and outlining the support available to help them in their academic life at the School.

The resulting film was a collaborative project between LSE and The Sixth Form College, Farnborough. After initial detailed planning sessions, the film was shot and edited by a select group of Farnborough's Media and Film enrichment pupils under the guidance of the college's Media and Film department staff. This process forged strong ties between staff and pupils of the college and LSE.

The final product is a celebration of LSE's students and highlights the resources available, while affirming that disability equality is a shared responsibility across the School.

## LSESU Creative Business Series

The LSE Students' Union Creative Business Series comprised eight lectures and workshops dedicated to students interested in pursuing business careers in the arts.

The Annual Fund grant meant it was possible to arrange distinguished speakers from various industries who gave invaluable insight into careers in the arts. It also helped to fund the necessary advertisement for the project and a closing event at the Fleet River Bakery.

## Singapore Society Yearbook 2011-12

The *Singapore Society (SingSoc) Yearbook* is a publication initiated by and for the Singaporean community at LSE. Chronicling SingSoc's key highlights of the year, it was conceived as a gift to each year's graduating class of Singaporean students.

Every aspect of the yearbook is original and meticulously put together from scratch to capture the memories and friendships forged at LSE by the society's 200-strong membership. It contains articles on major events, interviews with SingSoc members, photograph collages that document the year in pictures, and a collection of individual portraits that form the highlight of any typical yearbook.

Most importantly to students as they leave LSE to pursue their individual goals and careers after graduation, the yearbook serves as a memento of their time at the School that helps to forge lasting bonds between SingSoc members and their alma mater.

The SingSoc Yearbook project has benefited significantly from the LSE Annual Fund grant, which is the yearbook's main source of finance, covering nearly 90 per cent of the project's total cost. The yearbook is offered to every member of the Singapore Society, and is a completely non-profit project. SingSoc greatly appreciates this Annual Fund support.

**Anthea Choo** Secretary and Yearbook Co-Editor (2011-12)

## Awards breakdown

Grimshaw International Relations Club, Study

Trips 2011-12 **£15,000**

LSESU Travel Fund **£15,000**

*The Beaver* Digitisation and History of the Students'

Union History Exhibition **£12,863**

LSESU India Week 2012 **£10,000**

LSE Mexico Week 2012 **£10,000**

Anthropology Outreach **£9,950**

LSESU Timeless! 2012 Production **£7,500**

Global Brigades Development Projects 2011-12 **£7,500**

LSESU Pakistan Week 2012 **£7,230**

FMG 25th Anniversary Event **£6,000**

Arab Street Festival **£6,000**

London Security Exercise Model United Nations **£5,486**

Low Carbon Technology Field Trip to Scotland for MSc

Environmental Policy and Regulation Students **£5,200**

Disability and Well-being Service film project **£4,300**

Annual Energy Conference **£4,000**

LSESU Creative Business Series **£3,627**

Latin American Week: Discover its culture and the inequality challenges it faces **£3,500**

ASEN 22nd Annual Conference: 'Nationalism, Ethnicity and Boundaries' **£3,427**

LSESU African Caribbean Society Gala and Award Ceremony **£3,000**

LSESU Asia Emergent events series **£2,964**



LSESU Investment Society's Mergers and Acquisition Conference **£2,500**

Extension of Library beanbag project **£2,055**

Developing online training resources for qualitative text analysis software (NVivo and Alceste) **£2,000**

Ergometers for the use by LSESU Rowing

Club members **£2,000**

Netball Skills Share **£1,400**

LSESU Singapore Society Yearbook Project **£1,300**

Fiction, Philosophy and Truth (Literature and Philosophy Exhibition in the LSE Atrium) **£1,200**

500 days after Ruggie: Achievements and Challenges in Business and Human Rights **£1,080**

LSESU Itchy Feet Camping Expedition **£1,040**

Catholic Society Retreat **£1,000**

*London Globalist International Affairs* magazine **£1,000**

International Development Industry Dinner **£1,000**

European Society Blog/Think Tank **£1,000**

*Justitia Omnibus* Amnesty International Human Rights Journal **£700**

*Clare Market Review* – camera for artwork and promotional purposes **£420**



## ENGAGING WITH THE *Wider World*

LSE's roots are firmly in London but its reach is global and the School actively seeks to engage with the wider world. The Annual Fund awarded grants totalling £269,168 to 31 projects whose remits help LSE achieve this goal.

On a daily basis LSE academics shape global thought. Their counsel is sought by policymakers, non-governmental organisations, think tanks and businesses worldwide. International media networks rely on their expert opinion in numerous economic and social science spheres for informed comment and analysis of news stories.

LSE's acclaimed public lecture series is open to students, staff, alumni and the general public and also contributes to this process of engagement with the wider community. Each year the programme attracts prominent figures to speak on campus and in 2011-12, played host to renowned international speakers including Bill Gates, HH The Dalai Lama and Burmese democracy campaigner and Nobel Peace Prize winner Daw Aung San Suu Kyi. During the year there were 305 public events.

The School also maintains a programme of international events to engage audiences across the world and enhance the reputation

of LSE. This presence is essential to widen participation and helps to ensure that the best and brightest students internationally continue to be drawn to LSE.

In addition, LSE has been directly involved in London's biggest event in decades – the 2012 Olympic and Paralympic games. Alumni and staff got involved as volunteers, and LSE advisers contributed to the planning process. For example, the LSE Complexity Group developed an app for iPhones and Android smartphones that provided useful security information to visitors to the capital during the Olympics and helped police to monitor crowd levels in certain hotspots to improve safety.

Throughout 2011-12, Annual Fund support has funded a series of festivals, conferences, seminars and blogs covering a broad base of themes which promote interaction between LSE and communities across the globe.



## LSE India Portal

Annual Fund support enabled LSE to launch and run a new India at LSE portal: a web-based blog (with Facebook and Twitter feeds) that presents a consolidated view of LSE's India-related research and activities and encourages further sharing and debate in an accessible and interactive format.

Internally, the portal will raise awareness amongst staff and students leading to synergies, collaboration and development opportunities. Externally, it showcases the breadth and depth of LSE's engagement with India to alumni, academia, the media, government and industry in the UK, India, Asia and the wider world.

The portal develops networks across the LSE community to maintain an awareness of relevant initiatives and developments relating to India.

We are very grateful for the support we received from the LSE Annual Fund. By making this conference possible, it allowed academics, journalists, politicians, policymakers, faculty, students and the general public to come together to debate from a diverse and comparative perspective the urgent yet often neglected issue of secession in the European Union.

**Dr Amandine Catala**, LSE fellow, Department of Philosophy

## International Conference on the Politics of Secession in the European Union

Secession has become an urgent issue with movements in several EU states and other parts of the world. The conference was organised by the LSE Department of Philosophy, Logic and Scientific Method and focused on the political situations in Catalonia, Flanders and Scotland to address social, economic, moral and legal aspects. Annual Fund support helped to make the conference a huge success.

## African University Forum and The Africa Talks Seminar Series

The Annual Fund has supported two prominent strands of the LSE Africa Initiative which seeks to build stronger ties between LSE and Africa.

The Africa Talks Seminar Series provides a critical approach to contemporary African issues and creates a platform for African voices to inform and transform the global debate.

The African University Forum forms part of the School's commitment to work with African peers and universities in creating successive generations of academics, business leaders, entrepreneurs, politicians, lawyers and social workers who seek to facilitate positive change



## Awards breakdown

The economist and the wider world: the papers of Lionel Robbins (1898-1984) **£44,188**

African University Forum and The Africa Talks Seminar Series **£40,000**

LSE India Portal **£37,985**

Creation of an India data centre **£23,886**

Department of International History: international conference in central Africa **£20,247**

Irony, Justice and the Chinese State **£12,554**

The impact of colonial and post-colonial institutions on Latin America's long running

economic development. A celebration of the Colin Lewis scholarship **£10,000**

Development and recognition of student volunteering at LSE **£8,065**

The LSESU Emerging Markets Forum **£7,750**

LSE-GWU-UCSB International Graduate Conference on the Cold War **£6,750**

LSE Photo Prize 2012 **£5,625**

LSE and First Story creative writing competition for state schools **£5,000**

Wittgenstein – Philosophy and Photography **£4,900**

German Symposium 2012 **£4,500**

Drama Society Production at Edinburgh Fringe Festival 2011 **£4,444**

TEDxLSE annual event **£4,163**

Talking heads videos – Student Recruitment, ARD **£4,000**

The Politics of Financial Crises: lessons across continents **£3,000**

The International Drug Control System: re-evaluating its historical evolution and the potential for reform **£3,000**

Spectrum Staff Network external activities and events 2011-12 **£2,780**

Second-generation British-Asian Experiences in London: diversity, conflict and cohesion **£2,504**

International Conference on the Politics of Secession in the European Union **£2,200**

EMBRACE staff network events **£2,000**

LSESU Economics conference **£2,000**

NHSF Sports Competition **£1,980**

Visual Arts Society annual exhibition and launch **£1,727**

Public lecture and seminar – Akhil Gupta **£1,256**

D.E.A.F. Learners' event **£1,000**

*Graduate Journal of Social Science* **£714**

Open Law Charities Campaign **£500**

PhilosoVerse Literature Festival special edition on "Relating Cultures" **£450**



## CREATING SUSTAINABLE FACILITIES AND A WORLD CLASS CAMPUS

### *Environment*

The Annual Fund awarded £175,082 to nine projects promoting sustainable facilities and a world class campus environment.

LSE continues to make great strides in environmental sustainability – both in campus life and in new construction projects. In 2011, the School built on its earlier Bronze and Silver EcoCampus Awards by achieving Gold status, demonstrating the commitment of students and staff to the School's Environmental Management System, a tool that measures the impact of our activities on the environment.

Projects requesting Annual Fund support have to demonstrate that their need takes into consideration the above commitment, and that in enhancing the built environment they are energy efficient and do not compromise the sustainability of the School campus as a whole.

The construction of the new Student Centre leads the way in adhering to an environmentally-friendly policy, with the project securing "Outstanding" status under the Building Research Establishment's Environmental Assessment Method (BREEAM). When the

centre opens in autumn 2013 it will house a host of student resources and facilities in a building at the very forefront of sustainable design.

This year, work has also commenced on refurbishing the Towers, and on 32 Lincoln's Inn Field, the historic former home of the Land Registry that was acquired by the School in 2011. This building marks another chapter in LSE's ambitious estates strategy, which aims to create a world class estate commensurate with the School's academic reputation.





Music Society members have appreciated the organisation and effort that the Society's committee has undertaken to provide performance opportunities and are grateful for the Annual Fund's support for what should be a long-standing feature of music at LSE.

**Jasper Heeks, LSESU Music Society**

## Student Centre

Annual Fund support continues to be central to the development of the new Student Centre, which is due to open in the autumn of 2013.

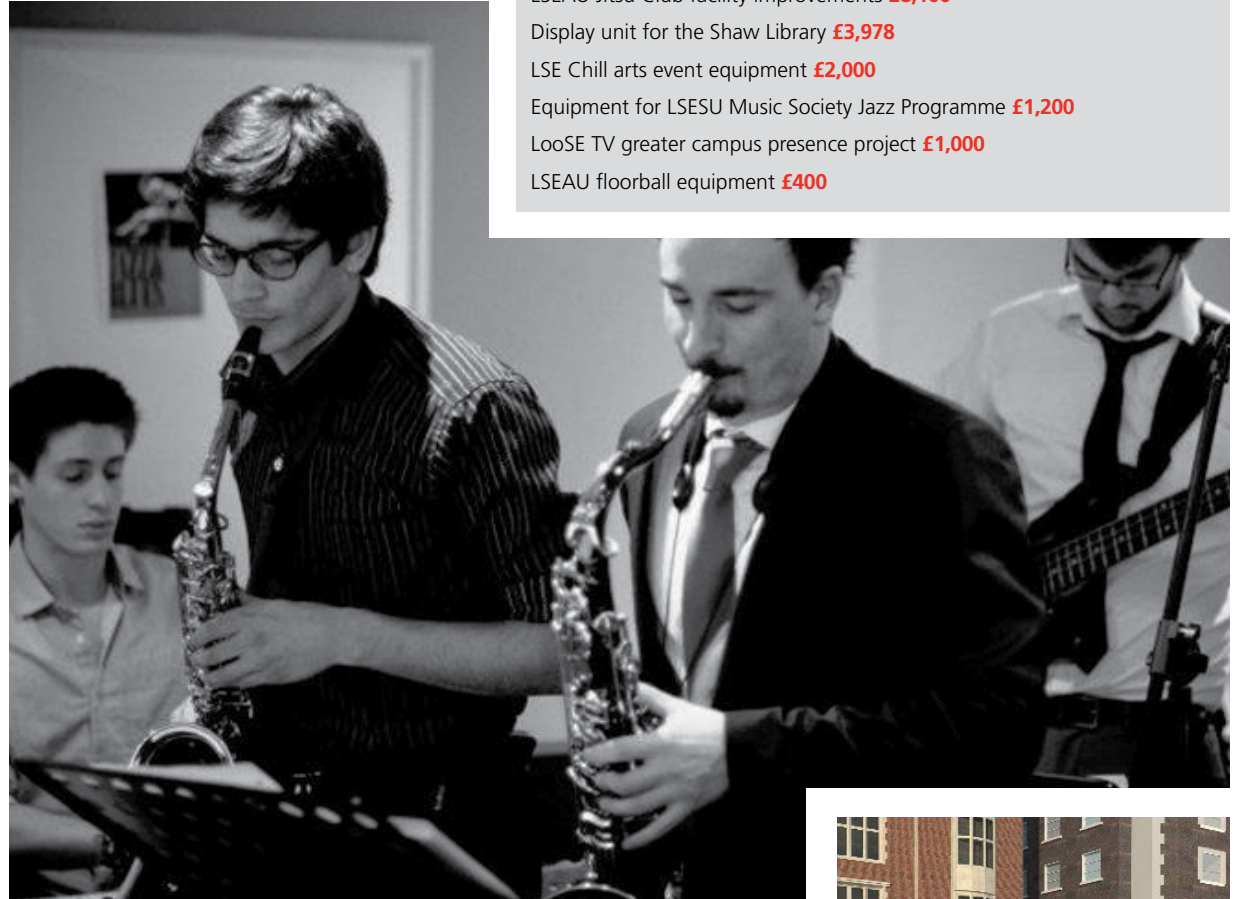
In addition to enhancing student life through the provision of specialist facilities including LSE Careers, LSE Students' Union and a media centre, the £24 million project is only the seventeenth building in the world to gain BREEAM Outstanding status for its impressive environmental credentials and sustainability. The new centre is the first ever higher education establishment in London to achieve this award.

The building will feature a combined heat and power unit, photovoltaic panels and grey water recycling, while during the construction phase, contractors will manage energy, water and waste streams and minimise consumption.

## LSESU Music Society Jazz Programme resources

The Annual Fund supported the Music Society's efforts to revive LSE's provision for jazz music. The Society was able to purchase amplifiers, keyboards and a drum kit. These supplement previous procurements by the Society and ensure adequate equipment is available to its growing membership.

An important consequence of supporting any Music Society activity is the wider impact that is felt on campus by the whole LSE community. Highlights during the year included the Lent Term Jazz and Blues Night in The Three Tuns (LSE's student bar), with the jazz band well received by a packed audience, while other societies have been able to call on the services of the musicians. Groups performed at the Grimshaw Society's black tie gala and the Visual Arts Society's exhibition. Members of the band also provided the music at the Annual Fund's inaugural donor reception in June.



## Awards breakdown

Student Centre **£100,000**

Digitisation of historic public lecture recordings for the LSE Library **£33,404**

Old Theatre lighting and sound upgrade **£25,000**

LSEAU Jitsu Club facility improvements **£8,100**

Display unit for the Shaw Library **£3,978**

LSE Chill arts event equipment **£2,000**

Equipment for LSESU Music Society Jazz Programme **£1,200**

LooSE TV greater campus presence project **£1,000**

LSEAU floorball equipment **£400**

## LSEAU Jitsu Club – improved facilities

In 2011-12 the Jitsu Club secured a grant to dramatically improve its facilities in the basement of LSE's Old Building with the addition of new hypoallergenic, durable and high impact absorbing tatami-styled training mats.

Once completed this new matting solution will improve the training area, adding to the overall enjoyment of all floor sports and activities as diverse as karate, aikido, yoga, dance, gymnastics, aerobics, capoeira and jitsu. This investment in floor sports such as jitsu enables a broad cross-section of the student population to participate in the wide range of diverse activities available at LSE.

LSEAU Jitsu Club welcomes the new matting solution as an important step in ensuring that essential extracurricular activities are delivered to the same world class standards as the academic learning for which LSE is renowned. Jitsu and other extra-curricular sports give people the confidence and vision to do things that they never believed possible; we want them to take that experience out into their lives and the wider world.

**Alexander A Air, "Sensei" LSEAU Jitsu Club**





## ATTRACTING THE BEST AND *the Brightest*

This year the Annual Fund has awarded £210,000 to three stand-out projects which ensure the School remains a driver of social mobility by attracting the best and brightest minds to study at LSE irrespective of their financial status or social circumstances.

LSE students and alumni are recognised globally for their inquisitive minds. Since its foundation in 1895 the School has been attracting the brightest and best social scientists from around the world to study in a challenging and engaging atmosphere.

Economic background should not be an impediment to gaining a world class education, and LSE remains committed to selecting students who can leave a lasting impact on society.

In 2011-12, LSE awarded £150,000 to the New Futures Fund – an increase of 50 per cent on the previous year. This has been essential in supporting students who would otherwise not have been able to pursue or complete an LSE education. A grant of £15,000 supports the LSE Students' Union in easing the pressures on existing students who are encountering financial hardship during their studies.

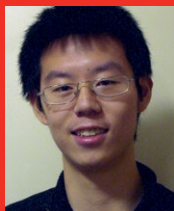
LSE is continuing to plan for future generations to ensure that the School remains open to all those with the ability to study here. The School is participating in the Government's 2012 Dux award scheme, which aims to encourage the recognition and reward of high performing 14-year-old pupils. Further, it will be working with other leading London-based universities to deliver information, advice and guidance to schools and colleges in the capital and surrounding boroughs with a high proportion of under-represented groups.

Other social barriers can also affect the pursuit of academic excellence. Through the Scholars at Risk programme, LSE is now housing academics and researchers whose freedom of thought and safety isn't guaranteed in their home countries. A grant of £45,000 this year has helped to remove fear and enabled academics to freely and confidently publish their research.



## New Futures Fund

The New Futures Fund awards grants or top-ups to students whose current funding does not meet the cost of their studies or whose programmes are not supported through other scholarships. Its impact can be demonstrated best through the words of a recipient whose life has been improved because of it:



I have just completed my final year at LSE, as an undergraduate studying Mathematics and Economics. Without the support I received through the New Futures Fund Award, I wouldn't have been able to say that – my LSE education would have never been completed. I am honoured to be the recipient of this award.

My family migrated to the UK from Hong Kong when I was 11 years old, and I have lived in the UK ever since. Growing up in a less privileged community, I have always been acutely aware of financial and academic challenges, but especially of the value of higher education.

The financial assistance provided by the New Futures Fund helped me to meet my education expenses, allowing me to focus on studying. It has been a privilege to be able to learn and explore Mathematics and Economics at LSE, and it is an education I will cherish.

I intend to pursue a career in finance and investment banking. Your support means I am one step closer to that goal through the LSE degree I now possess. Thank you for your confidence and willingness to help me in achieving my goals.

I promise to work hard so that I will be able give something back to the community, and one day I hope to also award scholarships to future students in their moments of financial need.

**PakSan Wu** (BSc Mathematics and Economics 2012),  
New Futures Fund Award recipient

## Scholars at Risk

The LSE Annual Fund awarded £45,000 to the Scholars at Risk programme, which addresses the causes and effects of inequality and injustice while helping support persecuted scholars and protecting academic freedom.

It was established to house scholars whose lives or work are being threatened in their home countries and who have research interests that coincide with those of the School. LSE is currently hosting an Iraqi researcher and has previously hosted an Ethiopian economist, an Iraqi professor of International Relations and a Palestinian economist. The School aims to provide a range of support to these scholars in order to help them fulfil their potential and have a positive impact on the world.



The Annual Fund grant has also enabled the scheme to provide language classes and crucial stipend support to individual scholars taken from a situation of immediate risk as well to develop a visiting fellowship programme whereby four refugee scholars are welcomed into relevant departments at the School as LSE Visiting Fellows.

## Awards breakdown

New Futures Fund **£150,000**

Scholars at Risk **£45,000**

LSESU Hardship Fund **£15,000**



Through the Scholars at Risk Fellowship, I have been able to conduct my research into Islamic extremism freely and fearlessly, travel the world giving lectures and talks and publish my work without fear of retribution. The fellowship has opened doors that would have otherwise been closed. It has given me the credibility and contacts much needed by a refugee scholar establishing herself academically in a new and foreign environment. For that, I shall always be indebted.

**Mina Al-Lami**, Senior research fellow, Media and Communications, hosted under the LSE Scholars at Risk scheme.

## RECOGNISING

# *Our Donors*

The Annual Fund donor community includes alumni, parents, staff and friends of LSE who individually and collectively make a profound contribution to School life.

Through a series of events, receptions and regular communication, the LSE Annual Fund strives to recognise and thank the donors whose generosity makes it a flexible fund with a positive impact at the heart of the School.

In 2011-12, a new event was added to the calendar to ensure that all donors who supported the Annual Fund during the year were invited to campus to see their gifts in action.

### **Annual Fund Donors' Reception**

The inaugural Donors' Reception took place on Tuesday 26 June 2012 in the Old Building, and was attended by over 150 donors and beneficiaries. Donors met and were personally thanked by the people whose LSE experience has been improved as a direct result of Annual Fund support.

Speakers at the reception included Mina Al-Lami, senior research fellow in the department of Media and Communications, an Iraqi researcher who is being hosted under the LSE Scholars at Risk scheme. Her moving speech and heartfelt thanks demonstrated

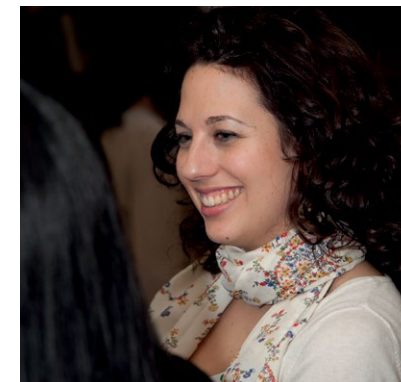
to a captivated audience the genuinely transformative effect the donor community has on LSE.

### **Class reunions**

Alumni celebrating their class reunions contribute significantly to the Annual Fund through their class gifts. The two reunions held in 2011-12 were hugely popular and collectively raised over £132,000 for Annual Fund projects. The reunion weekend itself enables the School to welcome class gift donors back to LSE and publicly recognise the support they have shown through their gifts to the Annual Fund.

### **Leadership Circles**

Gifts from Chairman's Circle and Director's Circle members – leadership Annual Fund donors who made Annual Fund gifts in the financial year above £5,000 and £1,000 respectively – amounted to 45 per cent of the Annual Fund's total income in 2011-12, a significant contribution from donors who comprise just seven per cent of all Annual Fund donors. The Director's Circle Reception



and Chairman's Circle Dinner, the Annual Fund's events for leadership circles, have been rescheduled to take place at the beginning of this upcoming academic year.

By moving the Chairman's Circle Dinner to September and the Director's Circle Reception to October, the Annual Fund will be able to recognise all leadership circle donors of the preceding year while providing an up-to-date picture of their generous philanthropy in action as the academic year commences.

We would like to say how much we enjoyed the Donors' Reception evening. We met a number of old friends and spent time talking to LSE staff and students, and will certainly continue to make our regular contributions to the fund, which is clearly doing great work.

**Don Adlington** (BSc Sociology 1966) and **Elizabeth Adlington**, (BSc Sociology 1966) Annual Fund donors



## LEADERSHIP

# *Giving*

In 2011-12, the School's leadership community was once again central to the strength of the Annual Fund. Members of the School's governing body, the Alumni Association Executive Committee and Alumni Group Leaders all made significant contributions to the Annual Fund through philanthropic gifts, their direct voluntary involvement in attending and leading events during the year and by encouraging others to support the Annual Fund. This generosity of spirit has another important effect, demonstrating to a wide audience the School's leadership's commitment to LSE and the work of the Annual Fund in delivering positive change across the School.



### Court of Governors

Dr Rosalind Altmann  
Stephen Barclay  
Sir Anthony Battishill GCB  
Professor Charles Bean  
Virginia Beardshaw  
Angela Camber  
Professor Stuart Corbridge  
Bronwyn Curtis OBE  
Roger Davies  
Alan Elias  
Richard Goeltz  
Jeffrey Golden

Dick Hibberd  
Johannes Huth  
Rt Hon Lord Justice Jacob  
Peter Jones CBE  
Lord Frank Judd of  
Portsea DLitt  
Anne Lapping CBE  
Dr Spiro Latsis  
Martin Lewis  
Ashley Mitchell  
Anne Page  
Ali Rashidian

Brian Smith  
Professor David Stevenson  
Elisabeth Stheeman  
Cato Stonex  
Dr Sushil Wadhvani CBE

*One anonymous donors*

### Alumni Association Executive Committee and Alumni Group Leaders

Rafael Alves De Almeida  
Christopher Bodell  
Marina Chamma  
Leon Desbrow  
Pierre Dinan  
Yelena Don  
Yoni Fessel  
Jeffrey Golden  
Steven Hercher  
Garich Lim Shington

Fiona MacDonald  
Brian Mitchell  
Niels Schindler  
Gregory Sullivan  
Stephen Tang  
Collin Tseng-Liu  
George Wetz  
Rachel Witalec

## CHAIRMAN'S *Circle*

Your generous gift of £5,000 or more to the Annual Fund in the last financial year has a profound impact at LSE. Thank you.

Nicholas Archer  
Shoji Arino  
Wellesley Baun  
Adele Biss  
Abib Bocresion  
Roger Davies  
Sir Evelyn de Rothschild  
Christian Dosch  
Daniel Fitz  
Adam Glinsman  
Stefan Guetter  
Jon Hillestad  
Johannes Huth  
Arnold Kammerling MBE  
Veronika Kapustina  
Gisella Ketvel  
Pii Ketvel  
Nina Kostic  
Dr Spiro Latsis  
Martin Lewis  
Stephen McKeever

Grace Oei  
Joel Perlman  
Brian Roper MBE  
Margaret Roper  
Norman Sabey  
Harry Samuel  
Bryan Sanderson CBE  
Rita Stephen MBE  
Carsten Stoehr  
Cato Stonex  
Ursula Van Almsick  
Dr Burkhard Varnholt  
Diane Wilson

### **LSE Centennial Fund (USA)**

David Beecken  
Richard Dunn  
Stewart Feldman  
Stephen Hays  
David Heleniak

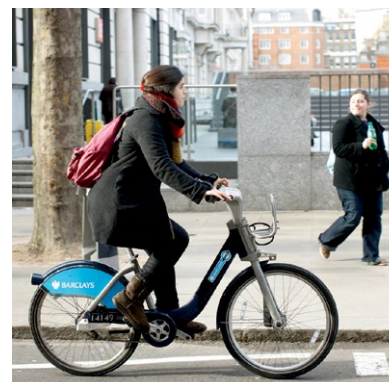
L E Simmons  
James Thomas  
Bruce Tuchman  
David Wah

### **German Friends of LSE**

Frank Mattern

### **Singapore LSE Trust**

Suchad Chiaranussati  
Lim Ho Kee  
Eugene Lai Chin Look  
Wah Kheong Leong  
Desmond Lim  
Chin Chai Ooi  
Patricia Yeo







## DIRECTOR'S

# Circle

Your generous gift of between £1,000 and £4,999 to the Annual Fund in the last financial year makes a real difference to life at the School. Thank you.

Helen Abbott  
Jeremy Asher  
Stephen Barclay  
John Barter  
Professor Nicholas Barr  
Professor Charles Bean  
Piers Butler  
Bernard Casey  
Fook Aun Chew  
Roland Chow  
Dr Peter Cirenza  
Sheila Clark  
Professor Frederick D'Agostino  
Dr Keith Day  
Richard Delbridge  
Professor Susan Dev OBE  
Leslie Dighton  
Arthur Dove CBE  
Jonathan Drake  
Kirk Economou  
Alan Elias  
Daniel Elliott  
Rowena Ellis  
Fumitaka Eshima  
Diana Eyre  
Kenneth Faircloth OBE  
Desiree Fixler  
Gene Frieda

Lynn Frieda  
Amir Gehl  
Adam Glinsman  
Jeffrey Golden  
Rita Golden  
Michael Goldmeier  
David Goldstone CBE  
Gonca Gürsoy Artunkal  
Fenanda Gusamo  
Motonobu Hasegawa  
Sabrina Ho  
Ian Holden  
Christine Holroyd  
Jung Hong  
Mark Hunter  
The Hon Mr Robin Jacob  
Hugh Jones  
Peter Jones CBE  
Nicolai Kobliakov  
Gauri Sikri Lakhnarpal  
Chao Leong  
Sir Michael Lickiss  
Dr Bo Lindroth  
Lady Jane Lloyd of Berwick MBE  
Keith Mackrell  
Professor Richard Macve  
Jeremy Metcalfe  
Robert Miall

Christopher Millar  
Suzanne Millar  
Professor Peter Miller  
Margaret Mills  
Ashley Mitchell  
Eryl Morris  
Carolina Mueller-Moehl  
James Nicol  
Philip Niem  
Roger Okill  
Gerard O'Neill  
Roger Paice  
Constantinos Papadopoulos  
Michael Peacock OBE  
Michael Pearson  
Christian Perrett  
David Perrett  
Ian Pleace  
Vijay Popat  
Sushilkumar Radia  
Zubindra Ramdarshan  
James Ramo  
Dilip Rasgotra  
Betty Richardson  
Axel Roehm  
Patrizia Roehm  
Dr Mark Roomans  
Brian Smith

Sir John Sparrow  
Andrew Templeton  
John Trimmer  
Erik Ulvestad  
John Ward  
Ian Wentworth  
Dr Urs Wickihalder  
Robert Williams  
Ara Yeromian  
Wai Yung

### LSE Centennial Fund (USA)

Arjun Aggarwal  
Edgar Ancona  
Nora Ancona  
Dr Henry Armour  
Sheldon Baskin  
Jean Belanger  
Anne Bingham  
John Casey  
Dr Otto Doering III  
Guy Elliott  
Conrad Foa  
Breht Feigh  
Nisa Geller  
Richard Goeltz  
Stefan Haselwandter  
Brian Herlihy  
William Hughes  
Osagie Imasogie  
James Johnson  
Paul Kaplan  
Nicos Katsoulis  
Paul Kennedy  
Dr Amy Knight  
Dr Malcolm Knight  
Michael Longthorne  
Neil Mehta  
Siddharth Mehta  
Ahmet Mesinoglu  
John Michaels Jr  
Dr Kevin Michaels

Anthony Paduano  
Dr Ingeborg Paulus  
Andreas Pecher  
Michael Peterson  
Ruth Porat  
Harry Reasoner Esq  
Jonathan Rosen  
Joseph Rotondo  
Douglas Scrivner  
Lata Shah  
Dr Patricia Stockton  
Dr Judith Stoikov  
Dr John Strudwick  
Jeffrey Tannenbaum  
Hilary Till  
Jane Trevarthen-Traub  
Nancy Troxler  
Lorne Weil  
Susan Wiesner

### German Friends of LSE

Wolfgang Streitz

### Singapore LSE Trust

Suee Chieh Tan  
Soo Hoon Hauw-Quek  
Goh Kian Chee  
Johanna Strunz  
Eddie Teo  
Dr Friedrich Thelen

### In memory

Jean Cassell (in memory of the late Frank Cassell)

### Six anonymous donors

## PENGUIN

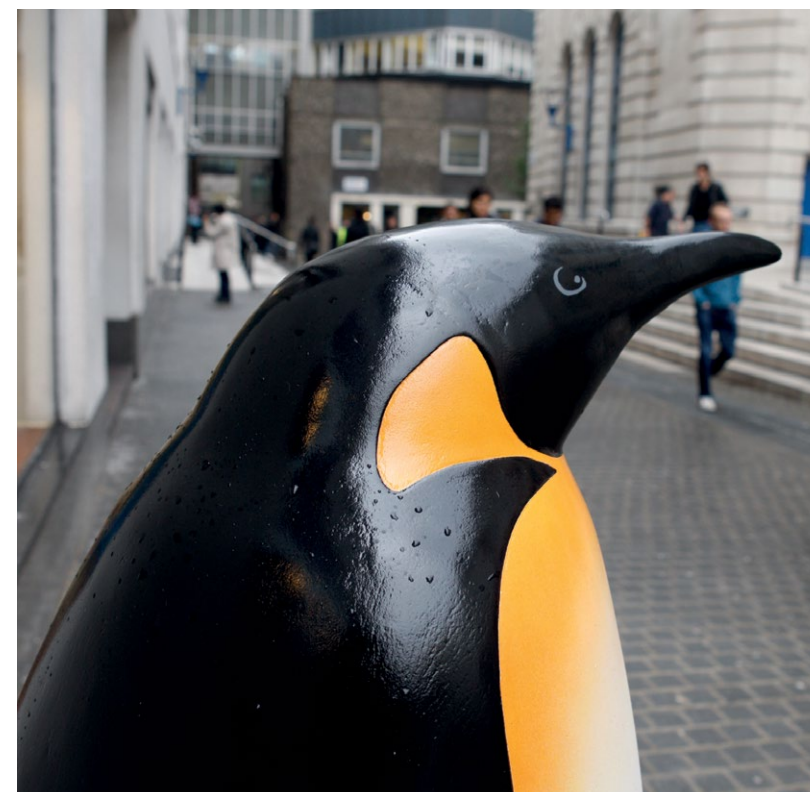
*Club*

Thank you to all graduates from the last five years who have made a gift of £30 or over in the last financial year.

Jakub Adamowicz  
Dr Stefan Altorfer  
Dimosthenis Anagnostopoulos  
Diarmuid Angland  
Malahat Askarova  
Melissa Bacani  
Mohammad Bahrami  
Vikram Balachandar  
Juan Barahona Rebolledo  
Amanda Beddows-Adams  
Zachary Berger  
Rebecca Birdsall  
Michael Boateng  
Vasileios Bougioukos  
Justas Bugnevičius  
Florian Burnat  
Daphne Cafritz  
Jacob Cafritz  
Wenbin Cai  
Carlos Canales  
Jiewei Chen

Wai Cheng  
Costas Constantinou  
Benjamin Cornish  
Georgina Davidson  
Yelena Don  
Mark Donahue  
Sarah Edwards  
Eddy Fonyodi  
Amalia Fugaru  
Jonas Gjersø  
Lucie Goulet  
Mariana Graca  
Sigridur Gudmundsdottir  
Fernanda Gusmao  
Juan Halpern Alamosa  
Dr Kristina Hinds  
Jennifer Holly  
Erin Holstein  
Angela Huang  
David Hutfless  
Yiannos Ioannou

Hajime Isozaki  
Marta Jankovska  
Christian Jochnick  
Anna Kalashyan  
George Karaolis  
Nicolai Kobliakov  
Diane Kohl  
Arthur Krebbers  
Natasha Lalji  
Charles Laurence  
Guojun Li  
Jiaren Liang  
Judy Lin  
Daniel Marriott  
Matthew Marshall  
Yusuf Muftuoglu  
Sandeep Nair  
Nadeesha Nanayakkara  
Daria Nojkina  
Ivan Obadic  
Nikesh Patel  
Zhiheng Png  
Rajesh Rajamani  
Giri Rajendran  
Scott Sams  
Michael Sheren  
Simon Sing-Key  
Yinqiu Tang  
Alexander Teytelboym  
Lap Tong  
Alecsandra Vlaicu  
Anthony Wearden



Alfred Webb  
George Wetz  
Richard Wilding  
Amy Williams  
Andrew Wright  
Ara Yeromian

### LSE Centennial Fund (USA)

Kevindeep Atwal  
Jennifer Baek  
Jacob Baron  
Janelle Braverman  
Benjamin Conner  
Rory Doyle

Devin Harmon  
Helena Lamb  
David Minc  
Richard Palacios Jr  
Elliot Rauba  
Cory Sherb  
Gregory Silver  
Colin Ward

### German Friends of LSE

Benedikt Dunst  
Stefan Padberg

Two anonymous donors



# ALUMNI

## Donors

Thank you to the LSE alumni who are generous in their support of their alma mater, continuing to play a direct role in the School long after their graduation. Alumni donors to the Annual Fund are listed under the decade in which they completed their first degree at LSE.

### 1930-39

Professor William Mead  
Phyllis Toms

#### In memory

The late Lady Kathleen Allen (in memory of the late Sir Roy Allen)

### 1940-49

Catherine Avent OBE  
Sheila Bennett  
Peter Block  
Basil Bonner  
Anthony Brennan CB  
Eleanor Bridgland  
His Hon Sir Clive Callman  
Barbara Clark  
Olive Coleman  
John Crowe  
Mary Darke  
John Dunn  
Rowena Ellis  
Anne Goldthorpe  
Professor Norman Graves  
Professor Peter Hart

Sir James Hennessy KBE CMG  
Henry Hilton  
Wilfred Hockfield  
Noneen Jacques  
Sara Kibel  
Pierre Languet  
Paul Lindsay  
Edward Masters  
Joyce Nalpanis  
Ronald Needs  
Prudence Peskett OBE  
Cecil Pickavance  
John Pike CBE  
Professor Paul Romus  
Norman Sabey  
John Trimmer  
Reverend John Walker  
Jean Wickham  
Margaret Williams

#### LSE Centennial Fund (USA)

Robert Levinson  
Barbara Sternberg

Four anonymous donors

### 1950-59

Richard Alexander  
James Allan CBE

Terrence Allan  
Dennis Andrew  
Sir Derek Andrews  
Codrington Ball  
Professor Michael Banton CMG  
Diana Barker  
Joseph Barling  
Frederick Barnes  
Bernard Baron  
John Barter  
Alec Batanero  
Sir Anthony Battishill GCB  
Robert Bax  
Roger Beaumont  
Harold Berrisford  
John Binns  
Wolf Blomfield  
Frank Blumenfeld  
Professor Jay Blumler  
Professor Noel Boaden  
The Late Christopher Bolton  
Malcolm Boothroyd  
Gordon Brand  
Ronald Brandon  
Cyril Breslauer  
Pamela Bright  
Barbara Brilliant  
Anita Brocklesby  
John Brougham

John Buckland  
Robert Budd  
Sir John Burgh  
Dr Cyril Cannon  
Frances Carmichael  
The Late Frank Cassell  
Tse Chang  
Morag Clark  
Elizabeth Cleaver  
Harold Cohen  
Squadron Leader Daniel Cooper  
Douglas Cracknell  
Harry Culham  
Anthony Cunningham  
Dr Gordon Daniels  
Harold Darton  
Frederick David  
Reverend Dr Peter Davie  
David Davis  
Ronald Davis  
Reverend Peter Dawson OBE  
David Denny  
Leslie Dighton  
John Dixon  
Arthur Dove CBE  
Jeanne Downton  
Lionel Drewitt  
Professor Myles Dryden  
Ismene Durand

Patrick Eavis  
Robin Ellis  
Jennifer Emanuel  
Gillian Evans  
Kenneth Faircloth OBE  
Susan Fasken  
Trevor Fenimore-Jones  
Anthony Foster  
Reverend Bernard Gales  
Eileen Geary  
Peter Goate  
Alan Godden  
David Goldstone CBE  
Graham Gooding  
Stanley Goodman  
Stuart Goodman  
Lionel Gordon  
Dr Michael Graham  
Elizabeth Gregory  
Professor Jacques Grossen  
Revel Guest-Albert  
Derek Hall  
Richard Hall  
Peter Hames  
David Hando  
Dorothy Harbord  
Prudence Harris Watson  
Claudia Harry  
Robert Hart  
Robert Haselden  
Raymond Hearn  
Ronald Henderson  
Anthony Henry  
Janet Herian  
John Herring  
Anthony Herron  
Helen Hickson  
Frederick Hodge  
Ian Holden  
Walter Holmes  
Christine Holroyd

Peter Howarth  
Professor Colin Hughes  
John Hulley  
Brian Humphreys  
Lady Iro Hunt  
Joan Hutten  
Grace Jackson OBE  
Roy Jones  
Sir Edwin Jowitt  
Lord Frank Judd of Portsea DLitt  
Dr Muhammad Kamlin  
Arnold Kammerling MBE  
Dr George Kardouche  
Dr Peter Kendall  
Una Kendell  
Simon Kester  
Peter Kett  
Donald King  
Heinz King  
John King  
Beryl Kingsbury  
Ralph Land CBE  
Donald Last  
Marshall Lees  
Sir Michael Lickiss  
Clifford Lines  
Eduardo Lizano  
Patricia Lloyd-Green  
Euan Lumsden  
Donald MacGregor  
Madeline MacDonald  
Keith Mackrell  
Michael Madden  
Dr Federico Magnifico  
William Marsh  
Ian Martin  
June Martin  
Anthony Mawby  
David McAuley  
Dorothy Mellor

Patricia Mellor  
Mohamed Meyassar  
Peter Mitchell  
Elspeth Morley  
Paul Stibbe  
Dr Edward Neufeld  
Ray Newbigin  
Gabriel Newfield  
Gerald O'Callaghan  
Christopher Oates  
Roger Okill  
Dr Izzud-Din Pal  
Pamela Palmer  
Anne Passmore  
Alec Pate  
David Paton OBE  
Michael Peacock OBE  
Aileen Pebody  
Canon Frank Pickard  
Wilfrid Pickard  
Michael Place  
Peter Pook  
Ronald Poulter  
Barbara Powrie  
David Price  
Roger Price  
Jon Rees  
Martin Reiss  
Betty Richardson  
Glyndwr Roberts  
Brian Rodmell  
Philip Rushworth  
Philip Sadler  
Stephen Schneider  
Navinchandra Shah  
Michael Sharman  
Michael Silver  
Martin Simmons  
June Simpson  
Valerie Sims  
Geoffrey Skinner CBE  
David Slade  
John Smith

Sir John Sparrow  
Ronald Springall  
Peter Stanbridge  
Anthony Starr  
Paul Stibbe  
Dr Jean Stirk  
Peter Stone  
Frank Stoner  
Allen Sykes  
David Taylor  
Geoffrey Taylor  
Andrew Templeton  
Michael Thomas CMG QC  
Dr William Thomas  
Sheila Titley  
John Toll  
Joan Towle  
Joanna Tjibbits-Puszet  
Kyriacos Tsioupras  
Laurence Turner  
William Tyldesley  
Professor Brian Van Arkadie  
Charles Waghorn  
Derek Walker OBE  
John Ward  
Dr Susan Waters  
Barbara Watson  
Margaret Watts  
Dr Janet Waymark  
Christine Whatmore  
Jeffery Wheatley  
Raymond White  
Joan Wicken  
John Widdop  
Dr Gethin Williams  
Robert Williams  
Roland Williams  
Alexander Wilson  
Bery Wise  
Michael Woolf  
Susan Wright

Robert Yazgi  
**LSE Centennial Fund (USA)**  
Professor Rein Abel  
Merrill Anderson  
Dr Demetrios Argyriades  
Deborah Beck  
Virginia Burns  
Cornelius Cacho  
Marilyn Charles  
John Charman  
Robert Cole  
Doris Cook  
Dr John Cool  
Doreen Crompton  
Frank Earwaker  
Dr Curtis Farrar  
Amadeo Francis  
Dr Leonard Freedman  
Marie Gately  
Doreen Getsinger  
Dr Charles Gilbert  
Reverend Dr Dean Gilliland  
Professor Marianne Githens  
Lane Goss  
Hon Mr Orval Hansen  
James Hunt  
Herbert Isaacson  
Judith Klein  
Dr Thomas Klein  
Sylvia Lewis  
The Late Dr Richard Lyman  
Professor Walter McMahon  
Professor Jerzy Modelski  
Sylvia Modelski  
Professor Paul Nelson  
Brenda Newman

Professor Gerald Nordquist  
Karla O'Brien  
Dr Philip Porter  
John Praksta  
Karen Riedl  
Marianne Schafer  
Lois Schwartz  
Monique Schweich  
Robert Schweich  
Andre Sharon  
Professor Bradford Stone  
Michael Teitz  
Patricia Weinberg  
Dr Robert Weinberg  
David Williams  
Marcia Williams  
Professor John Williamson  
Ruthanne Wise

#### German Friends of LSE

John Flower  
Khursheed Siddiqui

19 anonymous donors

### 1960-69

Robert Adewunmi  
Dr Sam Adeyoyu  
Donald Adlington  
Elizabeth Adlington  
Professor Martin Albrow  
David Alderman  
Malcolm Allbutt  
Valerie Allport  
David Anderson  
Professor James Armstrong



Graham Arran  
Juliet Askenase  
Ron Aspinall  
Elizabeth Atkins  
John Bailes  
Richard Bailey  
Ann Baker  
Laurence Baker  
Ahmed Balamesh  
Dr Judith Bara  
Professor Nicholas Barr  
Roderic Beale  
John Beard  
Phillip Beaumont  
Ann Beecher Brigden  
Joyce Bellamy MBE  
Ramachandran Bharath  
Margaret Bishop  
Doris Blacka  
Terence Boley  
Richard Bowen  
Eric Bowman MBE  
Dr Rosalind Bradford  
Dennis Bradley  
Anthony Bridges  
Agnes Brown  
Joan Bruggen  
Professor Roger Buckley  
Adolphine Burkens  
Dennis Burrows  
Douglas Cadman  
Shirley Campbell  
Richard Carey  
Zenon Carnapas  
Dr John Carrier  
Roland Chow  
Margaret Clapham  
Sheila Clark  
Monica Cleasby  
Patricia Collins  
Allan Cook CBE  
Dr Anthony Cook  
Myra Copleston  
John Cornhill  
John Cossins  
Ann Cotterrell  
Jeanette Cragg  
John Cragg

Abby Cronin  
David Crutch  
Richard Dale  
Elizabeth Davey  
David Davies  
John Davies  
Margaret Davies  
Roger Davies  
Jack Davis  
Robert Davis  
Dr Keith Day  
Richard Delbridge  
Roderick Denyer QC  
Niels de Terra  
Professor Susan Dev  
OBE  
The Late John  
Dewhurst  
Pierre Dinan  
Professor Rigas  
Doganis  
Professor David  
Downes  
Andrew Duguid  
Donald Dunning  
Imogen Ecclestone  
Geoffrey Edge  
Robert Edmonds  
Janet Elliott  
Diana Ellis QC  
Francis Ellis  
John Evans  
Prudence Evans  
Diana Eyre  
John Feane  
David Fenton  
Vincent Flynn  
Anne Forbes  
Judith Fox  
Ross Fraser  
Anthony Frayne  
Thomas Freeman OBE  
Barry Garfield  
Michael Gates  
Panos Ghalanos  
Lord Anthony Giddens  
Michael Goldmeier  
Peter Goldsmith  
Professor John  
Goodman CBE  
John Gower  
James Grant  
M Alan Griffiths  
John Halstead  
Jack Harmsworth  
Dr Frances Healy  
Georges Helminger  
Derek Hill  
Roger Hill  
Jon Hillestad

John Hodgson  
Professor Janet Holland  
Keith Hollands  
John Home  
Dr Satchidananda Hore  
Ronald Howlett  
Margaret Hulmes  
Greta Hyde  
Dr Janet Imlah Collett  
Kenneth Jackson  
Peter Jackson  
The Hon Mr Robin  
Jacob  
Dorothy Jameson  
Dennis Jarvis  
Isabel Jeffers  
Professor Ian Jeffries  
John Jennings  
Jonathan Jessup  
Dr Dale Johnson  
Dr Clive Jolliffe  
Peter Jones CBE  
Peter Jones  
Eunice Jukes  
Winifred Keeves  
Imogen Ecclestone  
Geoffrey Edge  
Robert Edmonds  
Janet Elliott  
Diana Ellis QC  
Francis Ellis  
John Evans  
Prudence Evans  
Diana Eyre  
John Feane  
David Fenton  
Vincent Flynn  
Anne Forbes  
Judith Fox  
Ross Fraser  
Anthony Frayne  
Thomas Freeman OBE  
Barry Garfield  
Michael Gates  
Panos Ghalanos  
Lord Anthony Giddens  
Michael Goldmeier  
Peter Goldsmith  
Professor John  
Goodman CBE  
John Gower  
James Grant  
M Alan Griffiths  
John Halstead  
Jack Harmsworth  
Dr Frances Healy  
Georges Helminger  
Derek Hill  
Roger Hill  
Jon Hillestad

Dr Muriel Mitcheson  
Brown  
John Montgomery  
Arthur Moore  
Dr Jacob Moreh  
David Morris  
Eryl Morris  
Ian Morrison  
Isabel Morrison  
Gillian Mottram  
Professor Nicos Mouzelis  
Martyn Must  
Kwee Choo Ng  
Professor Pier Nicola  
Wendy O'Conghaile  
Ann O'Kelly  
Benjamin Oakley  
John Ockenden  
Dr Maurice Odle  
Paul Olson  
Heinz Opelz  
Reg Orovwuje  
Tariq Osmany  
Andrew Oxley  
Cecil Oyediran  
Dr Celia Pachmayr  
Theocharis  
Papamargaris  
Edward Parker  
George Patterson  
Joe Pearson  
Robert Pedlingham  
Margaret Pegg  
Professor Anna  
Pellanda Custozo  
Susan Penny  
Muriel Pepper  
Michael Phipps  
Alexis Pienaar  
David Pilcher  
Edward Pincheson  
Anthony Platts  
Klaus Pohlmann  
Sheila Pollen  
Arran Poyser  
Professor Sir Richard  
Pulfrey  
James Ramo  
Kenneth Ravenscroft  
Anita Regal  
Brian Roper MBE  
Margaret Roper  
Jacint Ros Hombravella  
Professor Frederick  
Rosen  
Rosemary Ross  
Walter Ross  
Paul Samuels  
Bryan Sanderson CBE  
Roger Sansom

Mattigud  
Satyanarayana  
Daniel Schellekens  
Jonathan Schwarz  
Janet Scott  
Richard Segal  
Dennis Sellwood  
Sanjay Shah  
Donald Shell  
Gail Sheridan  
William Sheward  
Alan Shove  
Professor Maurice  
Shutler  
Richard Simmons CBE  
Professor Leslie Sklair  
Brian Smith  
Keith Smith  
Ronald Smith  
Laurence Solomons  
Susan Sorensen  
Michael Spiller  
Edward Stacey  
John Stanley  
Anthony Swabe  
Robert Swift  
Della Symons  
Dr Peta Tancred  
Jennifer Tanfield  
Dr Philip Tasch  
Richard Tatlow  
William Taylor  
Alan Titchener  
Christina Tolaini  
Frederick Trinder  
Roy Trinder  
David Tubbs  
Andreas Varlaam  
William Vause  
Richard Vernon  
David Wailen  
Paul Wailen  
Sandra Walmsley  
Professor Rennie  
Warburton  
Clare Warne  
Peter Waymark  
Mollie Weatheritt  
Ian Webb  
Ian Wentworth  
Christopher West  
Michael Weston  
Michael Whitehead  
Dr John Whyman  
John Williams  
Rose Wong  
Bruce Wood  
John Wood-Collins  
Antony Wool  
Elizabeth Worth

Margaret Wright  
Ronald Wright  
Dr John Yates  
Alan Yeats  
Donal Young

**LSE Centennial Fund (USA)**

Robert Adams  
David Barlow  
Sheldon Baskin  
Anne Bingaman  
Dr Sheila Blair  
Harry Blaney III  
Dr William Brandon  
Elizabeth Brownstein  
Professor Coralie Bryant  
Robert Burka  
Mollie Burke  
Dr Herman Chernoff  
Mark Clark  
Professor William  
Comanor  
Professor James  
Compton  
John Connor  
Dr Hugh Conway  
Karen Cross  
Patrick Deluhery  
Leon Desbrow  
Dr Otto Doering III  
Professor Nicholas  
Edsall  
Alan Exelrod  
Dr William Fairley  
Dr Edwin Feulner Jr  
Conrad Foa  
Stephen Foxman  
Franklin Gannon  
Dr Hugh Garnett  
Richard Goeltz  
Hilda Gould  
Hon Michael Guhin  
Dr Richard Gunther  
David Heleniak  
Dr Dale Henderson  
Barry Hershey  
Eileen Hoffman  
Dr Brendan Horton  
Dr Elliott Isenberg  
Leon Jacobson  
John Kendall  
Norman Klath  
Dr Malcolm Knight  
Jennifer Kornfeld  
Marc Kornfeld  
Thomas Kraczkiewicz  
Jay Kravitz  
Dr Carol Lancaster

Richard Lechthaler  
Professor Allen Ludwig  
Adelaide MacMurray-  
Cooper  
David Malina  
Barbara Marcus  
Dr Robert McKersie  
William Meserve  
John Michaels Jr  
Dr Eugene Mihaly  
Paul Milmed  
David Milne IV  
John Niehuss  
Dr Terry Olson  
Joseph Onek  
Professor John Ord  
Professor Orlando  
Patterson  
Z Patterson  
David Pearce  
Thomas Peebles  
Kathleen Peng  
Lawrence Pinco  
Westfield  
Janette Pratt  
Professor James  
Walter Psaila  
Harry Reasoner Esq  
Professor Peter  
Reddaway  
Steven Riskin  
Jonathan Rosen  
Michael Ross  
Donald Samuels  
Dr Ann Schneider  
Ernest Schusky  
Dr Alexander Shakow  
George Shapiro  
Dr Renee Shepherd  
Raghu Bans Singh  
David Siphron  
Peter Slavin  
Professor Myron Slovin  
Joan Sorkin  
Laurence Sorkin  
M Spitzer Jr  
Charles Steedman  
Dr John Stein  
Professor Robert Strauss  
Penelope Taylor  
Michael Touff  
Peter Trooboff  
Dr Roger Upson  
Hon Matthew Watson  
Professor Esther  
Wattenberg  
Lorne Weil

### German Friends of LSE

Wolf-Dieter Berkholz  
Dr Antonie Eser  
Dr Friedrich Thelen

Dr Ludwig Volz

**Singapore  
LSE Trust**

Ho Kee Lim  
Goh Kian Chee

### 20 anonymous donors

### 1970-79

Helen Abbott  
Abdurahman Acerol  
Dr Oliver Adler  
George Alexakis  
Jamal Ansari  
Nicholas Archer  
Dr Josephine  
Armistead  
Christopher Armstrong  
Professor John  
Armstrong  
Jeremy Asher  
John Aspinall  
John Barnes  
Dr Claire Baron  
Professor Charles  
Bean  
Maurice Beard  
Virginia Beardshaw  
Pamela Beck  
Thomas Beech  
Murray Bell  
Nicholas Bevan  
Thomas Bever  
Professor Patrizio  
Bianchi  
Daphne Richard  
Kathryn Bieber  
Doreen Binks  
Clare Birks  
Robert Bluett  
Paul Boothroyd  
Caroline Bossowska  
Celia Bower  
Howard Brabrook  
Robin Broadway  
Roberta Brockman  
Phillip Burns  
Piers Butler  
Bridget Campbell  
Peter Capel  
Marie Capes  
Bernard Casey  
Peter Cawley  
Professor Monoranjan  
Chakrabarti  
Anthony Chapman  
Kevin Chidgey  
Lynne Chilvers  
Ruth Clarke  
Stephen Collins  
Mark Collinson

Dr Michael Collop  
Andrew Colman  
Dr Stephen Cooney  
Rahele Cooper  
Helen Copestake  
Michael Cordingley  
Melanie Cousins  
Alison Cox  
Charles Crebbin  
Dr Luigi Crosti  
Bronwyn Curtis OBE  
Martin Curwen  
Philip Cutts  
Professor Frederick  
D'Agostino  
Anthony Dacre  
Paul Dare  
Robin Darton  
Peter Davies  
Mark Daymond  
Mungo Deans  
Dr Alfredo Del Monte  
Michael Denham  
Helen Dickson-  
Kalkhoven  
Terence Dignan  
Sheree Dodd  
Dr Ebba Dohman  
Lawrence Douglas  
Robert Douglas  
Nigel Duerdorth  
Brian Eales  
Alan Eastbury  
Tobias Eckersley MBE  
Alan Elias  
Dr Thomas Emmerson  
John Evans  
Michael Eve  
Rosemary Farrer  
Howard Feather  
Sarah Felton  
Martin Finke  
Alison Fisher  
John Fleming  
John Freeman  
Gillian Fletcher  
Dilys Gardner  
Colin Garlick  
Rita Gastaldi  
Norman Gibbs  
John Gibson  
Professor Christopher  
Gilbert  
William Gillespie  
David Glass  
Peter Gluckman  
Jeffrey Golden  
Rita Golden  
Roderick Goodyer  
Andrew Gordon  
Dr Paul Gorecki  
Stephen Goschalk  
Richard Graham  
Brian Granger

Vivienne Gross  
John Grumbar  
David Gwilym-  
Williams  
Elizabeth Harris  
John Harris  
Ian Harrison  
Peter Harte  
Dr Nikita Harwich  
Dixon Hawkins  
Jonathon Head  
Donald Hepburn  
Michael Hetherington  
Dr George Hext  
David Heycock CBE  
Alun Hicks  
Dr Martin Hill  
Audrey Hind  
Julian Hirst  
Andrew Hochhauser  
QC  
Elizabeth Hock  
Jack Hodder  
Harry Hogg  
Claire Horsley  
Margaret Horwich  
Barbara Howard  
Ruth Hradsky  
Stephen Hunt  
Kaiser Jamal  
Catherine James  
Alan Jarvis  
Ian Johnson  
Graeme Jones  
James Jowett  
Cris Kako  
The Hon Tod Kaufman  
Penelope Kegerreis  
Joan Kennedy  
Dr Patrick Kenniff  
Ralph King  
Robert Kleiner  
George Krimizis  
Peter Kuit  
Mario La Monica  
David Lamb  
James Lebo QC  
Dr David Levy  
Ann Lewis  
I Christina Lewis  
Irena Liebich  
Dr Bo Lindroth  
Pamela Llewellyn  
Rosemary Lovelock  
John Macrory  
Professor Richard  
Mansell  
Professor Maria  
Marcuzzo  
Dorothy Marden  
Professor Gerald  
Mars



Peter Martin  
 Professor Kent Matthews  
 Maureen McAlindon  
 Sandra McAvoy  
 Jane McComb  
 Ross McLeod  
 Judge Jeremy McMullen  
 Professor Ronald McQuaid  
 Kenneth Mears  
 The Late Viola Mellor  
 Penelope Mendelssohn  
 Ian Meyer  
 Robert Miall  
 Francine Miller  
 Margaret Mills  
 Anthony Milnes  
 Brian Mitchell  
 Ian Morley  
 Diane Morris  
 Harold Mozley  
 Cordatus Mulokozi  
 Katherine Nairne  
 Frances Newman Taylor  
 Sandra Newton  
 Rosalind Niblett  
 James Nicol  
 Rachael Norman  
 James O'Grady  
 Patrick O'Sullivan  
 Grace Oei  
 Erich Opfermann  
 Clifford Paice  
 Tryggvi Palsson  
 Egli Pantelakis  
 Nicholas Papadimitriou  
 Constantinos Papadopoulos  
 Dr Bala Paramanathan  
 Kevin Parris  
 Duncan Paterson  
 Lawrence Pattinson  
 Dr John Pattison  
 Dr Philip Paur  
 Andrew Pearson  
 Michael Pearson  
 Michael Petrie  
 Dorothy Pettitt  
 Christopher Phillips  
 Nigel Platts  
 Robert Podesta  
 David Potter  
 Michael Power OBE  
 Alexander Prentice  
 Hugh Prince  
 Kathleen Pring  
 Jacqueline Radclyffe  
 Sushilkumar Radia  
 Sookram Ramessar  
 Douglas Rawlinson  
 Nicholas Raymont  
 Kenneth Riley

Georges Robichon  
 Penelope Robinson  
 Barbara Rose  
 Denton Rouse  
 Sheila Russell  
 Stefka Samus  
 Peter Sandersley  
 Dr David Sandiford  
 Andrew Sangster  
 Dr Gunter Schlusche  
 Paul Schulte  
 Paul Selby  
 Probrir Sen  
 Graziano Sezzi  
 Mary Shaheen  
 Elizabeth Shields  
 Graham Shore  
 Margaret Mills  
 Christiana Sideri  
 Thomas Simpson OBE  
 Michael Smart  
 Iain Smith  
 Judith Spells  
 Elizabeth Spiro  
 Claus Spoerel  
 Katherine Stamatakis  
 Raymond Stark  
 Christopher Starr  
 Professor John Stewart  
 Julian Szego  
 Toshihiko Tanaka  
 David Thompson  
 Robert Tilley  
 Joan Timmins  
 David Todd  
 Professor Tetsuo Tsuzaki  
 Norman Ward  
 Sorrel Vogel  
 Dr Michael Wadsworth  
 David Walker  
 Georgina Walker  
 Peter Walls  
 Professor Peter Watson  
 Vanessa Watson  
 Alfred Webb  
 George Whiting  
 Philip Willis  
 John Winskill  
 Audrey Winterbottom  
 William Winward  
 Jonathan Wolinsky  
 Ruth Wood  
 Philip Woods  
 Phyllis Woods  
 Peter Woolley  
 Anthony Wright  
 Michael Young  
 Michael Zuckerman

## LSE Centennial Fund (USA)

Elliott Abrams  
 The Hon Thomas Ammons III  
 Edgar Ancona  
 Nora Ancona  
 The Hon Robert Anthony  
 Anne Apgar  
 Dr Henry Armour  
 Kevin Bacon  
 Thomas Bailey  
 David Beecken  
 Professor Janice Bellace  
 Peter Biersteker  
 Stanley Black  
 Winthrop Brown  
 Craig Bury  
 Dr John Carfora  
 Robert Clyatt  
 Dr David Coe  
 David Cohen  
 Nancy Cole  
 Dr Stephen Davis  
 Robert Dudiak  
 Stewart Feldman  
 Gerald Fisher  
 Professor Peter Fitzgerald  
 Marlee Flaherty  
 Stephen Forsyth  
 Ann Friedman  
 Douglas Scrivner  
 Clifford Sethness  
 John Shepherd  
 Dr Douglas Shier  
 Brian Siegel  
 L E Simmons  
 Joel Solomon  
 Mark Stewart  
 Dr Patricia Stockton  
 Susanne Stoiber  
 Dr Judith Stoikov  
 Richard Straus  
 Dr John Strudwick  
 Dr Curtis Tarnoff  
 David Turetsky  
 Dr Charles Vehorn  
 Susan Vitka  
 Gregory Von Gehr  
 Franklin Wallis  
 Jeffrey Weinberg  
 Frederic Weiss  
 Judith West  
 Warren White  
 The Hon John Woodcock Jr  
 D Alan Wrigley Jr

Bruce Kopf  
 Dr Michael Leonasio  
 James Lewandowski  
 Albert Lilienfeld  
 Dr Robert Litwak  
 Samuel Livermore  
 Kirsten Lundberg  
 Professor M Stuart Madden  
 Douglas Martin  
 Walter May  
 Selby  
 Nina McKenna  
 John McLees  
 Siddharth Mehta  
 Dr Michael Montgomery  
 Susan Muriel  
 Shamila Nayar  
 Valerie Nelson  
 Dr Rolando Ossowski  
 Dr Ingeborg Paulus  
 Dr Gordon Peterson  
 Lois Radisch  
 James Ramsaur  
 Raymond Randolph  
 Peter Rapelye  
 Dr Steven Rosenbloom  
 Dr James Rubenstein  
 Dr Randy Rydell  
 Arthur Rypinski  
 David Sahr  
 Lynn Schenk  
 Dr Rebecca Scott  
 Douglas Scrivner  
 Clifford Sethness  
 John Shepherd  
 Dr Douglas Shier  
 Brian Siegel  
 L E Simmons  
 Joel Solomon  
 Mark Stewart  
 Dr Patricia Stockton  
 Susanne Stoiber  
 Dr Judith Stoikov  
 Richard Straus  
 Dr John Strudwick  
 Dr Curtis Tarnoff  
 David Turetsky  
 Dr Charles Vehorn  
 Susan Vitka  
 Gregory Von Gehr  
 Franklin Wallis  
 Jeffrey Weinberg  
 Frederic Weiss  
 Judith West  
 Warren White  
 The Hon John Woodcock Jr  
 D Alan Wrigley Jr

## German Friends of LSE

Hans-Jurgen Hummel  
 Dr Bernhard Junemann  
 Wolfram Richter  
 Wolfgang Streitz  
 Rolf Ulrich

## Singapore LSE Trust

Chin Chai Ooi  
 Soo Hoon Hauw-Quek  
 Eddie Teo

19 anonymous donors

## 1980-89

Dr Olusegun Akinyemi  
 Ibrahim Aksaray  
 Mahmood Al Alawi  
 Stephen Alambritis  
 John Aldridge  
 Stelios Alexandrou  
 Dr Rosalind Altmann  
 Dr Hala Alumran  
 Gabriel Ambizas  
 Doreen Anderson  
 Dr Abdolkarim Anvari  
 Lynne Archibald  
 Jaime Ardia Gomez  
 Diana Aronstam  
 Artemis Artemiou  
 Susan Atkins  
 Diana Bacic  
 Fariba Bakhtiar  
 David Bamford  
 Stuart Barber  
 Dr Kurt Barling  
 Marina Bastianello  
 Derek Batcheller  
 Bernadette Baxter  
 Harold Beaton  
 Sandra Becucci  
 Erin Bell  
 Mary Box  
 Gregory Branch  
 Dr Dierk Brandenburg  
 Alfred Brausch  
 Dr Helen Brown  
 Glenys Brownnton  
 James Buckley  
 Thomas Bulman  
 Jon Burden  
 Andrew Butterly  
 Vincent Cameronlynck  
 Ian Cameron  
 Julian Chaffey  
 Terence Chan  
 Debora Chan-Southwell

Therese Fox  
 Dr Stefano Frega  
 Emile Galipeau  
 Clive Gallier  
 Anna Gaworzewska  
 Dr Till Geiger  
 John Chu  
 Andre Chung Shui  
 Dr Stefano Cianferotti  
 Anna Ciarrapico  
 Richard Clarke  
 Sheila Clejan  
 Maria Clerides  
 John Clifford  
 Dr Anna Collard  
 Professor Fabiano Colombini  
 Caterina Colombo  
 Costas Constantinou  
 Margaret Conway  
 The Rt Hon Baroness Corston PC  
 Mark Cox  
 Sidney Cox  
 Rosalba Cruz Jimenez  
 Dr Francesca Dall'Olmo Riley  
 Dr Grace Davidson-Burnet  
 Anne Davies  
 Dr Carolyn Davies  
 Guy Davies  
 Dr Antonio de Medeiros  
 Elbertha De Neeling  
 Dr Alison Dean  
 John Dodd  
 Susan Doe  
 Jonathan Drake  
 Dr George Drower  
 Pamela Dub  
 Philippe Dupont  
 Marianne Ecker-Fierstone  
 Stephen Beaton  
 Stuart Eden  
 Professor Christian Edger  
 David Edwards  
 Dr Lena Ekelund  
 Axelson  
 Daniel Elliott  
 Rosaleen Elliott  
 Dr Timothy Ensor  
 Elizabeth Fairweather  
 Michael Fellows  
 Anthony Fernandes  
 Nicholas Fernyhough  
 Rodrigo Fiaes  
 Daniel Fitz  
 John Flattery  
 John Foley  
 Clare Forgie

Stephen Kiar  
 Pamela Klonaris  
 Dr Alfonso Kratter  
 Dr Stephan Kux  
 Kirsty Lang  
 Kim Lansdown  
 David Lawton  
 Michael Lebrecht  
 Chao Leong  
 Andrew Levy  
 Catherine Lewis  
 Edward Lewis  
 Richard Lewis-Jones  
 Christopher Lock  
 Rebecca Lunn  
 Aidan MacCabe  
 Professor Giuseppina Malerba  
 Rachel Malik  
 Gary Mann  
 Dr Gabrielle Marceau  
 Julius Markides  
 Dr Laura Markowe  
 Pamela Marsh  
 Bruce Marshall  
 Raul Martin Arranz  
 James Masson  
 Dr Michael McGrath  
 Nileshe Mehta  
 Jeremy Metcalfe  
 Peter Middlehurst  
 Margaret Midgley  
 Professor Peter Miller  
 Hiroko Miyamura  
 Thomas Moeschinger  
 Daniela Monacelli  
 Irene Monks  
 Virginia Morck  
 Dhanpaul Narine  
 Ewan Neilson  
 Dr Linda Neilson  
 Lee Neumann  
 Stephen Newell  
 Dr Kathleen Newman  
 Graham Nicholson  
 Philip Niem  
 Sally Norman  
 Gerard O'Neill  
 Dr Omogbai Omo-Eboh  
 Anthony Owen  
 Dr William Paget  
 Dr Edwin Passes  
 Graydon Paulin  
 Sergio Pelleggrinelli  
 David Pelly  
 Elizabeth Perry  
 Andrew Phillips Tebb  
 Thomas Pine  
 Professor Giuseppe Pisaurio

Vijay Popat  
 Alan Porter  
 Professor David Power  
 Eliana Psimolophites  
 Dr Swee Lip Quek  
 Peter Rackham  
 Lauri Railas  
 John Ralli  
 Peter Randall  
 Dilip Rasgotra  
 Diana Rau  
 Christine Revoy  
 Aled Roderick  
 Andrew Rogerson  
 Dr Mark Roomans  
 Judith Roy  
 David Rudd  
 Nicola Sampson  
 Harry Samuel  
 Kiran Sandford  
 Stelios Savvides  
 Emmanuel Schatz  
 Dr Michiel Scheffer  
 Dr Richard Schwartz  
 Dr Bindi Shah  
 Vijal Shah  
 John Sheehy  
 Saleem Sheikh  
 Jennifer Sibley  
 David Simmons  
 Bedi Singh  
 Vidya Singh  
 Jeremy Smilg  
 Christopher Smith  
 Howard Smith  
 Rebecca Smithers  
 Dr Dawn Snape  
 Socratis Socratous  
 Annapurna Sofat  
 Dr Marlene Sporo  
 Akis Spyropoulos  
 Alan Stevens  
 Elisabeth Stehman  
 Cato Stonex  
 Penelope Stowe  
 Deborah Stronach  
 Lucy Stylianou  
 Evelyn Swanson  
 Eva Szpiro-Burke  
 Dr Sailesh Tanna  
 Maurizio Tassi  
 Khalil Tayfor  
 Stewart Taylor  
 Thomas Tendorff  
 Leonidas Thomas  
 Robert Thomson  
 Dr Jon Thorn  
 Reverend William Toner  
 Stuart Trow  
 Frixos Tsakkistos

Monica Tse  
 Nicola Turner  
 Erik Ulvestad  
 Ursula Van Almsick  
 Hendrika Van Grevenstein-Halbert  
 Professor William Van Vugt  
 Marie Marina Vassilicos  
 Kenneth Venables  
 Jennifer Venn  
 Jonathon Venn  
 Guia Villavicencio  
 Rebecca Vincent-Smith  
 Keith Wade  
 Dr Sushil Wadhvani  
 CBE  
 Betty Walsh  
 Richard Warren  
 Philip Watkins MBE  
 Lorelei Watson  
 Jonathan Webb  
 Stephanie Whitehead  
 Karen Widdess  
 Ruth Wills  
 Professor Richard Wilson  
 Mark Withers  
 Dr Athina Yiannakou  
 Wai Yung  
 Dr Sami Zahran  
 Paul Zedd  
 Jeanne Ziminski

## LSE Centennial Fund (USA)

Gregory Aftandilian  
 Arjun Aggarwal  
 Sotero Arizu  
 Dr Charles Armstrong  
 Dr Bjorn Aune  
 Erik Autor  
 Richard Babson  
 Dr Richard Baskerville  
 Marc Baum  
 Jean Belanger  
 Daniel Bivins  
 Eric Blank  
 Daphne Bloore  
 Dr Giacomo Bonanno  
 Scott Bowie  
 David Brinkman  
 Vincent Budesza  
 Rebecca Campbell  
 Timothy Campbell  
 Thomas Carothers  
 Bruce Catania  
 William Cisneros  
 Colm Connolly  
 Andrew Costanza

Terence Cryan ●  
 Brian Curran ● ●  
 Jeffrey Davies  
 Madlaine Davis-  
 Moradkhan  
 Dr Joao De Figueiredo  
 Dr Jorg Decressin ●  
 James Dierking ●  
 Robert Douglass Jr ●  
 Richard Dunn ●  
 Michael Egan  
 Guy Elliott ●  
 Dominic Endicott  
 David Evans ●  
 Sanna Fellows ●  
 David Fier ●  
 Herbert Fitzell  
 Karen Fitzner ● ●  
 Gilbert Flaming ●  
 Joshua Friedlander ●  
 Rena Fulweiler ●  
 Gary Gero  
 Laurence Goldfarb ●  
 Matthew Goodman ●  
 Nathalie Granato  
 John Granato III  
 William Gray ●  
 Daniela Gressani ●  
 Allison Gulbrandsen ●  
 Gregory Gullickson ●  
 Yogesh Gupta ●  
 Karen Harasymiak ●  
 Susan Hart  
 Willard Hatch ●  
 Stephen Hays ●  
 Maureen Healy ●  
 Richard Heckinger ● ●  
 Jeffrey Hedlund ●  
 Theodore Hoffman Jr  
 Andrew Hornbrook  
 Osagie Imasogie ●  
 Charles Jackson  
 Dr Vijay Kannan ●  
 David Kaplan ●  
 Janice Karlak ●  
 Nicolaos Katsoulis ● ●  
 David Korduner  
 Paul Lansdell  
 Heather Larrick

Amy Law  
 Robert Leeds III ●  
 Kay Lister ●  
 James Loeffler  
 Michael Longthorne ● ●  
 Douglas Lowell ●  
 Sean Lynn-Jones ● ●  
 Mitchell Mackler  
 Milinda Martin ●  
 Dr Mark McMahon  
 Robert Megna ●  
 Amy Melnick  
 Ralph Mendelson  
 Fernando Mendez  
 Jonathan Mirsky ●  
 Kevin Morrice ●  
 Yvonne Morrice-  
 Johnson ●  
 Nancy Nollen ● ●  
 Professor Stanley  
 Nollen ●  
 Inge Badura  
 Mary Nurdyke-Grace  
 Jean Oppenheimer ●  
 Anthony Paduano ●  
 Christopher Pasko  
 Arthur Paterson III ●  
 Eric Penanhoat ●  
 Brian Percival  
 Lisa Peterson ●  
 Breck Platner ●  
 Thomas Polk ● ●  
 Ruth Porat ●  
 James Prappas ●  
 Jessica Pugal ●  
 Catherine Re  
 Barrett Reasoner  
 Elizabeth Reimann  
 Jeffrey Rhodes  
 Robert Rodrigue  
 Stephen Rogers  
 Charles Rossmann  
 Robert Rubino  
 John Sandhop Jr  
 Blair Sanford  
 David Satola ●  
 Katherine Scott ●  
 Eric Secoy ● ●  
 Jonathan Seed  
 Lata Shah ● ●  
 Jane Appleby ●  
 Kenneth Sigas ●  
 Dr Melvin Small ●  
 Leslie Smith ●  
 Susan Snyder ●  
 Marc Sobel ● ●  
 Jeffrey Soderberg  
 Betsy Sprenkle ●  
 Dr Elizabeth Stewart ●  
 Ann Strickland ●

Michael Surgalla Jr ●  
 Jeffrey Tannenbaum ●  
 James Thomas ●  
 John Thornton Jr ●  
 Hilary Till ●  
 Traci Tompson  
 Nancy Troxler  
 Takemi Ueno  
 Dr David Van Zandt  
 Raymond Vince ●  
 Rakesh Vohra ● ●  
 Stephen Von Oehsen  
 David Wah ●  
 Louise Washer ●  
 Megan Waters ●  
 Dr James Wentz  
 Susan Wiesner

### German Friends of LSE

Dr Helene Seppain ●  
 Andre Schneider ●  
 Dr Ingo Luge ●

### Singapore LSE Trust

Suchad Chiaranussati  
 Eugene Lai Chin Look  
 Wah Kheong Leong ●  
 Desmond Lim ●  
 Yen Mie Lim  
 Suee Chieh Tan ●  
 Patricia Yeo

26 anonymous donors

### 1990-99

Rawdon Adams  
 Anis Ahmed ●  
 Hafsa Al Ulama ●  
 Jalal Al-Yawer ●  
 Christopher Alexander ●  
 Brigadier Israel Amoah  
 Irena Andrassy ●  
 Jane Appleby ●  
 Edward Arlitt ●  
 Peter Aspbury ●  
 John Atherton ●  
 Gordon Au ●  
 Thomas Aubrey  
 Eduard Auer ●  
 Abimbola Ayodeji ●  
 Antony Baldwin ●  
 Claudia Barrachi ●

Corneth Bart-Williams ●  
 Catherine Baxendale  
 Toby Baxendale ●  
 Leena Beejadhur ●  
 Erik Bendixen ●  
 Bengt Berg ●  
 Vikas Bhardwaj ● ●  
 Dr Margaret Blake ●  
 Dr Brad Blitz ●  
 Abib Bocresion ●  
 Andreas Bodenmann ●  
 Tom Bradford ●  
 Hubert Brands ●  
 Katherine Bulman ●  
 Allison Calderbank ●  
 Mark Callingham ● ●  
 Angela Camber ●  
 Susan Canty ●  
 Christian Carrillo-  
 Rodriguez ●  
 Michelle Cassidy ●  
 Zen Cawasjee ●  
 Ivan Chan ●  
 Satjinder Chander ●  
 Philippos ●  
 Charalambides ●  
 Evangelia Charitoudi ●  
 Renee Chatterjee ●  
 Chude Chidi-Ofong ●  
 Maria Christofidou ●  
 Arnaud Colin De  
 Verdere ●  
 Marina Comninou ●  
 Maria Consoli ● ●  
 Dr Mary Cooke ●  
 Christopher Cooper ● ●  
 Sylvain Coriat ●  
 Amanda Culhane ●  
 Dr Riccardo Curcio ●  
 Morgane Danielou-  
 Doumbouya ●  
 Alexander Darmoo ● ●  
 Aurelie Debussy-Pech ●  
 Mark Deen ●  
 Olivier Delay ●  
 Emanuel Delia ●  
 Dr Constantine ●  
 Delicostopoulos ●  
 Giuseppe Dell'Acqua ●  
 Massimo Della Justina ●  
 Alessandro Deltreppo ●  
 Yiola Demetriou ●  
 Dana Denis-Smith ● ●  
 Aroon Dhoot ●  
 Brett Diment ●  
 Sophie Dimopoulou ●  
 Anup Dodhia ●  
 Paras Dodhia ●

Dr Jordi Domenech ●  
 Christian Dosch ●  
 Simon Early ● ●  
 Michael Eaton ●  
 Kirk Economou ●  
 Chris Eglin ●  
 Fumitaka Eshima ●  
 Dr Pantea Etessami ● ●  
 Alexandros ●  
 Ethelontis ●  
 Samson Ezobi ●  
 Adesola Fani-Kayode ●  
 Hubert Farrell ●  
 Christian Feghali ●  
 Kristin Feigenwinter ●  
 Alistair Fell ●  
 Paola Feller ●  
 Yoni Fessel ●  
 Lucy Findlay ●  
 Desiree Fixler ●  
 Franz Flotzinger ●  
 Bruno Fontaine ● ●  
 Veronique Forge ●  
 Gene Frieda ●  
 Nicole Friederichs ●  
 Amalia Fugaru ●  
 Pamela Furness ●  
 Paraskevi Galani ●  
 Elena Garcia de la  
 Fuente ● ●  
 Gillian Geddes ●  
 Amir Gehl ● ●  
 Dr Ioannis Giannikos ●  
 Juan Gil Crespo ●  
 Brijinder Gobindpuri ●  
 Hideki Goda ●  
 Nico Goossens ●  
 Dimitra Goudoufa ● ●  
 George Goutis ● ●  
 Antonino Governale ●  
 Irving Graham ●  
 Malcolm Grindrod ●  
 Paul Groden ● ●  
 Rene Grunenfelder ●  
 Dr Casilda Guell ●  
 Stefan Guetter ●  
 Ignacio Gutierrez Hevia ●  
 Gonca Gürsoy ●  
 Artunkal ●  
 Damir Hadziosmanovic ●  
 Emily Haithwaite ●  
 Rana Halaby-Cooper ●  
 Margaret Hall ● ●  
 Reynard Hanoppo ●  
 Fiona Harford ●  
 Roula Harfouche ●  
 Motonobu ●  
 Hasegawa ●

Maria Hatzipetrou ●  
 Dr Hemmo Hemmes ●  
 Jean Hennessy ●  
 Christian Hesselhoj ●  
 Sophie Heyman ●  
 Martyn Hobrough ●  
 Dawn Holland ●  
 Jung Hong ●  
 Willem Horstmann ●  
 Frank Hufnagel ●  
 Tanveer Hussain ● ●  
 Alkis Ieromonachou ●  
 Colin Iles ● ●  
 Philip Jackson ●  
 Roelof Jacobs ●  
 Jack Johnston ●  
 George Jones ●  
 Oleg Kalnichevski ●  
 Christodoulos Kaloyeros ●  
 Demetrios Karczas ●  
 Geir Karlsen ●  
 Maria Ketvel ●  
 Niko Ketvel ●  
 Pamela King ● ●  
 Johanna Klein ●  
 Ashvinder Kochhar ●  
 Nora Kocsis ●  
 Barbara Kolator ● ●  
 Dr Emmanouil Kolezakis ●  
 Christos Kosmas ●  
 Nina Kostic ●  
 Andrey Kuleshov ●  
 Susan Kumbleben ●  
 Elisabeth Kyril ●  
 Alexis Lagoudakis ●  
 Aynsley Lammin ●  
 Dr Heather Lannin ● ●  
 Geir Larsen ●  
 Paul Latham ●  
 John Lee ●  
 Timothy Lee ●  
 Siobhan Lewington ●  
 Margaret Lewis ●  
 Martin Lewis ● ●  
 Dr Erik Lithander ●  
 Fong-Yu Liu ●  
 Toby Locke ●  
 Dr Adriano Lucatelli ●  
 Catharina Luras ●  
 Alessandra Lustrati ● ●  
 Fiona MacDonald ●  
 Alberto Malagodi ●  
 Francisca Malaree ●  
 Marc Mansfield ●  
 Jeremy Marsh ●  
 Steven Marshall ●  
 Tsunako Matsumoto ●  
 Paul McCabe ●  
 Yasmin McDonnell ●

Stephen McKeever ● ●  
 Patrick Mcmorrow ● ●  
 Beatriz Meldrum ●  
 Richard Minns ●  
 Michael Modiano ●  
 Dionysios Moretis ●  
 Audrey Morgan ●  
 Peter Mueller ●  
 Carolina Mueller-Moehl ●  
 Dr Daniel Muller-  
 Jentsch ●  
 Catherine Murray ● ●  
 Julia Murray Logue ●  
 Dr Mario Nava ● ●  
 Dr Holger Nehring ●  
 Kristen Nelson ●  
 Alexander Neuber ●  
 Mia Norcaro ●  
 Francis Nosek III ● ●  
 Paul Nugent ●  
 Dr Jorge Nunez Ferrer ●  
 John Nystrom ●  
 Charles Oganya ●  
 Philippe-Fitzpatrick ●  
 Onimus ●  
 Chukwuemeka ●  
 Osuagwu ●

Professor Gianmarco ●  
 Ottaviano ●  
 Deborah Pacquette ● ●  
 Julian Palmers ●  
 Dr Nan-Yeong Park ●  
 Matthews ●  
 Nigel Passmore ●  
 Fernando Pastor ●  
 Reena Patel ● ●  
 Dr Reshmi Paul ●  
 Swati Paul ●  
 Thomas Pearson ●  
 Fionuala Pender ● ●  
 Borany Penh ●  
 Ana Perez Espartero ● ●  
 Joel Perlman ●  
 Christian Perrett ●  
 David Perrett ●  
 William Pershke ●  
 Andreas Petsas ●  
 Hugues Plyffer ●  
 Rebecca Plane ●  
 Ian Pleace ●  
 Dr Norman Price JP ●  
 Brenda Puech ● ●  
 Nicholas Purchase ●  
 Zubindra ●  
 Ramdarshan ●  
 Miguel Ramos-  
 Fuentes ●  
 Ali Rashidian ●  
 Roger Raymond ●  
 Helen Redesdale ●  
 Neil Reeder ●  
 Leroy Reid ●



Marcus Renusch ●  
 Kenneth Roberts ●  
 Dr Amanda Robinson ●  
 Natalie Rogers ●  
 Ann Rush ●  
 Elizabeth Rycott ●  
 Tariq Sadiq ● ●  
 Ricky Sandhu ●  
 Sean Saunders ●  
 Kathleen Scanlon ●  
 Bradley ●  
 Chiara Scassa ●  
 Soren Schafft ●  
 Rene Schneider ●  
 Dr Rosa Scoble ● ●  
 Antony Scott ●  
 Rahul Seth ●  
 Vivek Shah ●  
 Christopher Sherwood ●  
 Wei Shi ●  
 Mark Shutt ●  
 Gauri Sikri Lakhanpal ●  
 James Smith ● ●  
 Julian Smith ●  
 Mei Yin Sng ●  
 Malcolm Souza-Lewis ●  
 Maria Stamouli ●  
 Nikola Stanojevic ●  
 Mie Starbuck ●  
 Christian Stark ●  
 Amanda Steimberg ●  
 Britt Stene ●  
 Lady Dorothy Stewart ●  
 Carsten Stoehr ●

Ouida Taaffe ●  
 Dr Cecilia Tacoli ● ●  
 Stephen Tang ●  
 Mona Tannous ●  
 Barbara Taute ●  
 Dmitriy Timoshin ●  
 Neil Tomkins ●  
 Eithne Treanor ●  
 Collin Tseng-Liu ●  
 Manh Tu ●  
 Dr Edwin Van De  
 Haar ● ●  
 Dr Judith Van Walsum-  
 Stachowicz ●  
 Dr Burkhard Varnholt ●  
 Philip Vergauwen ●  
 Dr Georgia ●  
 Verropoulou ●  
 Willem Vinke ●  
 Jeroen Visser ● ●  
 Dr Giorgio Volpe ● ●  
 Ernst Von ●  
 Kimakowitz ● ●  
 Goetz Von Peter ●  
 Benjamin Wales ●  
 David Wasserberg ●  
 Muna Wehbe ● ●  
 David Whippe ● ●  
 Dr Jeannette Wibmer ●  
 Irene Wong ● ●  
 Fiona Wookey ●  
 Brenda Yates ●  
 Chi Yau ●  
 Andreas Yennadiou ● ●

Jamsheda Young ●  
 Alexander ●  
 Zakharchenko ●  
**LSE Centennial  
 Fund (USA)**  
 Andreas Bahm ●  
 Whitney Ball ●  
 Wilson Barmeyer ● ●  
 Briana Barocas ● ●  
 Ricardo Berner ●  
 Sulkin ● ●  
 Virginia Berten ●  
 Gene Blahato ●  
 Gorham Blaine ●  
 Burt Blodgett ● ●  
 Christopher Bodell ●  
 John Boland ● ●  
 Thomas Burkemper ●  
 David Caleca ●  
 Michael Carlin ●  
 John Casey ●  
 Robert Clark ● ●  
 James Cole ●  
 John Dahl ●  
 Steven Dana ●  
 Mark Davis ●  
 Peter Davos ●  
 Felicia De Sanctis ●  
 John De Yonge ●  
 Stephanie Dencik ● ●  
 David Duback ●  
 Stephen Dyott ●  
 Susan Eddy ●



Eric Fastiff  
Breht Feigh ●  
Genie Fernald-Heimbigner ●  
Tamara Fox  
Christopher Frasch ●  
John Fry  
Kristen Furlan  
Vanessa Gallagher ●  
Jonathan Gat ●  
Simon Gervais  
Brian Gilmore ●  
Michael Gutkin  
Lee Harris ●  
Stefan Haselwandter ●  
Jeremy Heckerling  
Carlton Henry  
Brian Herlihy ●  
Monica Hertzman  
Dr Jens Hilscher ●  
Dr Gur Hirshberg ●  
Angela Hsu ●  
Joerg Joergensen ●  
Jason Judd  
William Junkin ●  
Leonard Keating III ●  
Robert Keber ●  
Gardner Lane ●  
Christopher Layton ●  
Brian Lee ● ●  
Michael Lee ●  
Lonn Litchfield ●  
Andrew Loewenstein ●  
Timothy Louie  
George Lynett Jr ●  
Alexandre Maia ●  
Ricardo Marcos Rocha Reis ●  
John McEvoy  
John McKay ●  
Sarah McManus  
Ahmet Mesinoglu ●  
Dr Kevin Michaels ●  
Carsten Miller  
Jamie Morin ●  
Christian Mumssen  
Geoffrey Oblak ●  
Rafael Pagan Jr  
Mark Pasko ● ●  
Andreas Pecher  
Michael Peterson  
Victoria Plaut ●  
Sheldon Pollock III ●  
Alison Post ● ●  
David Postlewaite  
Darin Raiken  
Adam Raphael ●  
David Rickard ●  
Karen Romano ●  
Alicia Rose  
David Rose ●

Michael Rosenbaum ●  
Joseph Rotondo ●  
Stephen Schofield  
Stanley Shepard ● ●  
Dr Gary Solis ●  
Thomas Songer ●  
Marshall Steeves ● ●  
Dr David Steinberg ● ●  
Steven Su ●  
Margaret Suralik ●  
Dr Daniel Szpiro ●  
Bruce Tuchman ●  
Yogita Upadya  
Gregory Watson ●  
Jeremy Weinberg ●  
Griffin Whitney ●  
Dr M Ellen Wicklum ●  
John Young  
Doris Zeibig ●

### German Friends of LSE

Holger Hansen  
Cristina Von Busse  
Dr Christian Winkler

25 anonymous donors

### 2000-09

David Aaron  
Charles-Afif Abdul Wahab  
Artemis Achilleos  
Jakub Adamowicz ●  
Beatrice Addo  
Peter Aimufua ●  
Aysecan Akarli  
Kerem Akcay  
Reem Akl  
Arya Alatsas  
Andrew Aldrich  
Malik Ali  
Dr Lewis Allan ●  
Rafael Alves De Almeida  
Dr Stefan Altorfer  
Naseem Ansari  
Fabian Ansorg  
Antonios Antonakis  
Gianluca Antonucci  
Ursula Antwi-Boasiako  
Baha Arab  
Shahid Arbab ●  
Malahat Askarova  
Opeyemi Atawo  
Mohammad Bahrami  
Nicolai Bakovic  
Vikram Balachandrar  
Susan Ballentyne  
Wellesley Baun

Amanda Beddows-Adams  
Nehar Begum  
Romain Berry  
Karishmah Bhuwanee  
Harry Birmingham  
Tanja Bisgaard  
David Blood  
Michael Boateng  
Akkaraj Boonyasiri  
Vasileios Bougioukos  
Rewa Bouji  
Richard Bradley  
Marc Bridge  
Germain Brion  
Etienne Brumauld Des Houlieres ●  
Sebastian Buckup  
Justas Bugnevičius  
Florian Burnat  
Arianna Cagli  
Wenbin Cai  
Carlos Canales  
Marco Carone  
Trixie Cartwright  
Aleksandra Cavoski  
Jerzy Celichowski  
Bidisha Chakraborty ●  
Marina Chamma  
Jiewei Chen  
Wai Cheng  
Rachel Chia ●  
Wen-Te Chiang  
Woo-Jung Choi  
Yune Choi  
Dr Thomas Christiansen  
Man Chu  
Dr Peter Cirenza ●  
Elena Cirillo  
Gregory Clifford  
Cristian-Ioan Comsa  
James Cook  
Dr Anne Corbett  
Edward Crowther  
Povilas Dapkevicius  
Dr Paolo Dardanelli  
Andrew David ●  
Georgina Davidson  
Bastiaan De Goei  
Sameera De Silva  
Daniel De Simone  
Caroline Dehe  
Stavros Dendrinios  
Pierre-Andre Devaud  
Zehra Dislioglu  
Panagiotis Divriotis  
Yelena Don  
Mark Donahue  
Jan Dormann  
Christopher Dove

Sally Dudleston  
Miriam Edelman  
Sarah Edwards  
David Eggleton  
Seref Enver  
Gloria Etuk  
Graham Facks-Martin MBE  
Alon Falach  
Emanuela Farris  
Lan Feng ●  
Michael Fessel  
Livia Figa-Talamanca  
Danny Fischer  
Federico Flora ●  
Eddy Fonyodi ●  
Gwladys Fouché  
Mayliss Francois  
Keiko Fujino  
Cory Gaunt  
Rohit George  
Alexander Gerrard  
Osman Ghani  
Dr Simone Giannerini  
Jehona Gjurgjeala  
Ioannis Gkanos  
Irene Glinos  
Benedikt Goetz  
David Gold ●  
Charlotte Goldman  
Lucie Goulet  
Letizia Grosso  
Sandro Grunenfelder  
Sigridur Gudmundsdottir  
Fenny Gunawan  
Ciaran Gunne Jones ●  
Fernanda Gusmao  
Dr Maria Gutierrez Domenech ●  
Sahar Habibi  
Martin Hammond  
Ryan Hansen  
Sarah Harrison  
Eldrik Hartley  
Laura Harvey  
Jean-Charles Henry  
Romain Henry ●  
Dr Kristina Hinds  
Pui Ho  
Jennifer Holly  
Rossana Howgrave-Graham ●  
Angela Huang  
Mokbul Hussain ●  
David Hutfless  
Yiannos Ioannou  
Hajime Isozaki  
Ingrid Jacobson Pinter  
Blaz Jakic  
Sandeep Jalaf

Adrian James  
Christian Jenni ●  
Richard Jeremy ●  
Priti Jobanputra  
Francois Josserand  
Michel Jreissati  
Bjoern Juretzki  
Humphrey Kangha  
Veronika Kapustina  
George Karaolis  
Jiro Kashiwagi  
Lawrence Kay  
Stephen Kelly  
Joel Kenrick  
Werner Keplinger  
Jennifer Kesar  
Ali Khaki  
Meelis Kitsing  
Dr Bernhard Klement ●  
Anna Kleymenova  
Nicolai Kobliakov  
Arber Koci  
Dr Naonori Kodate  
Milan Kosorin  
Jerzy Kot  
Arthur Krebbers  
Florian Kuszner  
Sevastian Lagonika  
Natasha Lalji  
Charles Laurence  
Michael Lavrysen ●  
Molu Lebby  
Mei Lee  
Hendrik Lemahieu ●  
Wilson Leung  
Guojun Li  
Ramona Liberoff  
Yasmin Lulu  
Judy Lin  
Xavier Lopez Del Rincon Troussel  
Nicholas Luder  
Pirjo Lumme ●  
Evren Lus  
Guadalupe Machinandiarena  
Christopher Mainella  
Federica Maiorano  
Maria Mamone  
Dr Rupert Manhart  
Daniel Marriott  
Matthew Marshall  
Sergio Masciantonio  
Raphael Mazet  
Martin McAuley  
Victoria McKenzie-Lunn ●  
Luis Medina ●  
Christos Meletiou  
Siri Mikalsen ●  
Lawrence Miller ●

Adamantios Minas  
Nimesh Mistry  
Christian Mogge  
Yusuf Muftuoglu  
Dorlin Muresan  
Emanuele Musso  
Hashina Nagar  
Sadya-Anne Ndoko  
Dr Nicholas Nedzynski ●  
Wilhelm Nehring  
Dr Suzanne Newcombe  
Dr Demos Nicolaidis  
Takashi Nishiwaki ●  
Daria Nojkina  
Graham O'Brien  
Tomas O'Donoghue  
Jarlath O'Hara ●  
Ivan Obadic  
Emeka Odogwu  
Konstantinos Oikonomou  
Christine Olney Holmes  
Reginald Otten  
Roger Paice ●  
Sathaporn Paisanburapa  
Talia Parnass  
Nikesh Patel  
Lila Paul  
Holly Peterson  
Dr Silvia Pezzini  
David Powell  
Omar Rahman  
Rajesh Rajamani  
Giri Rajendran  
Idham Ramadi  
Vedad Ramliak  
Arjun Reddy  
Katherine Reece  
Kleio-Maria Reppa  
Neoklis Rodoulis  
Shontae Romain ●  
John Ruane  
Scott Sams  
Alessandro Santini ●  
Christine Saunders  
Charles-Erwan Savary  
Roderick Scarth ●  
Niels Schindler  
Andreas Schober  
Ruth Schoen  
Monika Schroeder  
Michael Schuetz  
Mark Selvarajan  
Naimish Shah ●  
Elliot Simmons  
Simon Sing-Key  
Dr Indraneel Sircar

Mirjana Skoco  
Alexander Small  
Miguel Solana  
Anushree Srivastava  
Saagar Srivastava  
Pascale Stacey ●  
Amanda Stokes-Roberts ●  
Julie Stoll  
Carlos Suarez Doriga  
Prashant Subbarao  
Gregory Sullivan  
Jimmy Tam  
Yinqiu Tang  
Steven Taylor  
Clare Taylor Gold ●  
Alexander Teytelboym  
Joanna Thornes  
Elizabeth Tietz  
Diana Trojanus  
Carl Tuke III  
Juan Urrutia Ybarra  
Sakkapol Vachatimanont  
Raquel Valladares  
Marianna Ventouratou  
Heather Viets  
Nora von Ingersleben  
Alecsandra Vlaicu  
Vladimir Vukicevic  
Sophia Walker  
Anthony Wearden  
Joshua Weinberg  
George Wetz  
Dr Urs Wickihalder  
Richard Wilding  
Amy Williams  
Mei Xue  
Julien Yerly  
Ara Yeromian  
Man Yeung  
Graham Young

### LSE Centennial Fund (USA)

Onyema Afulukwe  
Jennifer Baek  
Laura Bakkensen  
Brandon Barford  
Alison Barker  
Emmy Bernard  
Janelle Braverman  
Laura Campos  
Benjamin Conner  
John Coogan  
John Dailey  
Dr Cristel De Rouvray  
Rory Doyle  
Dr R Anthony Elson ●  
James Forman  
Matthew Frazier

Francis Gagnon  
Daniel Gelfand  
Christopher Gruszczynski  
Kyle Handley  
Christina Hanley  
Devin Harmon  
Daniel Haskell  
Catherine Herrold  
Dustin Hoffman  
Jonathan Hung ●  
Rima Hyder  
Dr Markus Jaeger  
James Johnson  
Charles Joiner  
Vedrana Katic-Kenworthy  
Helena Lamb  
Amy Lawrence  
Benjamin Loewy ●  
Charles Mandly Jr  
Ivan Mathew  
Neil Mehta  
Sami Mesrour  
David Michaeli  
Jessica Milano ●  
David Minc  
Mary Morris  
Nathaniel Mullins  
Zahra Nawaz  
Richard Palacios Jr  
Jane Park  
Scott Pedowitz ●  
Michael-John Pierce  
Sharmila Raj  
Elliot Rauba  
Stephen Reed  
Jacob Regenstreif  
Matthias Sainz ●  
Mark-Andre Saucier-Nadeau  
Brian Schiller  
Marc Sennewald ●  
Victoria Shattles  
W Sherb  
Dr Ramteen Sioshansi ●  
Lindsey Skibell ●  
Jared Smith ●  
Merrill Sovner  
Sandie Stringfellow ●  
Simon Thavaseelan  
Dr Norrie Thomas  
Evan Thorn  
Sarah Travis  
Carter Vance  
Samuel Varghese  
Carrie Vicens Leary  
Andrew Walshe  
Colin Ward

Erin White  
Raymond Wicklander  
Rachel Witalec  
Scott Withycombe

### German Friends of LSE

Dr Elisabeth Mueller  
Stefan Padberg  
Dr Tobias Raffel  
Michael Wechsler  
Anita Zech

### Singapore LSE Trust

Garich Lim Shington

20 anonymous donors

### 2010-12

Dimosthenis Anagnostopoulos  
Diarmuid Angland ●  
Melissa Bacani  
Juan Barahona Rebolledo  
Zachary Berger  
Victoria Bew ●  
Rebecca Birdsall  
Daphne Cafritz  
Jacob Cafritz  
Helen Coombes ●  
Benjamin Cornish  
Andreas Demetri  
Jonas Gjernsø  
Mariana Graca  
Juan Halpern Alamos  
Erin Holstein ●  
Marta Jankovska  
Christian Jochnick  
Moises Kababie-Coronas ●  
Anna Kalashyan  
Will Knight  
Diane Kohl  
Pui Law  
Jiaren Liang  
Yingchu Liu  
Tahira Mathur ●  
Oluwatomisin Moronkola  
Sandeep Nair  
Nadeesha Nanayakkara  
James Nianias ●  
Lucy Pether ●  
Zhiheng Png  
Virginia Sentance ●  
Michael Sheren  
Leena Taha  
Lap Tong

Katherine Van Buskirk  
Hannah Williams  
Andrew Wright ●  
Katherine Wzorek ●  
Zhi Xie

### LSE Centennial Fund (USA)

Kevindeep Atwal  
Jacob Baron  
Ashley Coale  
Matthew Kennedy  
Gregory Silver

### German Friends of LSE

Benedikt Dunst  
Johanna Strunz

Two anonymous donors

# FRIENDS AND SUPPORTERS *of LSE*

The Annual Fund is privileged to enjoy the support of a diverse donor community committed to LSE. Thank you.

Abdul Abdul-Hussein  
Renu Agrawal  
Dr Clyde Alexander  
Ranbir Alg  
Dr Roger Ali  
Konstantinos Anagnostopoulos  
Shoji Arino  
Elizabeth Aumeer  
Dr John Avery Jones CBE  
John Bailey  
Wendy Bainham  
Dr Gerben Bakker  
Stephen Barclay  
Philip Bayliss  
Angela Beckett  
David Berridge  
Cathy Birmingham  
Nick Birmingham  
Adele Biss  
Lynn Blunt  
Robin Blunt  
Harry Boys  
Sally Boys  
Jane Buckley  
Shumaila Bux  
Heather Campbell  
Elisabeth Choplin  
Jean-Luc Choplin  
Dr Adrian Clarkson  
Dr Shirley Clarkson  
Chris Coleman  
Julia Connor-Smith

George Constantino  
Mary Constantino  
Alison Coombes  
Professor Stuart Corbridge  
Carly Crockett  
Raksha Dawda  
Sonia De Jesus  
Sir Evelyn de Rothschild  
John Devlin  
Nivedita Doshi  
Paloo Doshi  
Professor John Ellis  
Janet Evans  
Li Fang Li  
Carol Gale  
Coulla Georgallis  
George Georgiou  
Rhona Greenby  
Lesley Hallett  
Stephen Hallett  
Krishan Hansrani  
Fiona Hart  
William Hatton  
Patrick Hawke-Smith  
Andrew Hewitt  
Dick Hibberd  
Dr Evelyn LM Ho  
Peter Hon  
Shauna Honey  
Viet-Anh Hua  
Felicity Jones  
Gill Jones

Rachel Jones  
Vira Kammee  
Dr Kary Kelly  
Sandra Kibbey  
Alice King  
Fiona Kirk  
Seema Kumar  
Katherine Lawrence  
Nadine Lennox  
Dr Timothy Leunig  
Dr David Lewis  
Robert Lindsey  
Thierry Logier  
Praful Majithia  
Sadhna Majithia  
Simon Marsh  
Andrew Martin  
Arjun Matthai  
Bharat Mehta  
Christopher Millar  
Suzanne Millar  
Dr Jennine Morgan  
Bill Mosley  
Dr Timothy Neal  
Dr Karl Newton  
Professor Ian Nish  
Maggie O'Connor  
Dr Dipo Oluyomi  
Karen Oudin  
Anne Page  
Dr Martin Palmer  
Kailas Parmar  
Vasanti Patel  
Veejay Patel  
Philip Pau  
Helen Peel  
Dr Hannes Plank

Mag Karin Plank  
Paraskevi Polyzogopoulou  
Jacob Prager  
Shiromani Quail  
Axel Roehm  
Patrizia Roehm  
Bo Ruan  
Ian Russell  
Nikos Sawvakis  
Ruth Sentance  
Ashok Seth  
Naresh Sethi  
Dr John Sherman  
Neil Simpson  
Rita Stephen MBE  
Professor David Stevenson  
Ruth Sutton  
Chanan Syan  
Jasbir Syan  
Danko Tomas  
Veronika Tugendreich Garwolinski  
Kate Turner  
Simeon Underwood  
Elena Vassiliadou-Georgiou  
Nita Watts  
Peter Williams  
Diane Wilson  
John Windemer  
Derek Winterbottom  
Kenneth Wong  
Wendy Wong  
Donald Workman  
Teiong Choon Yap

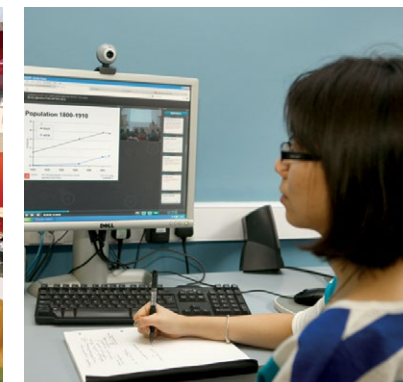
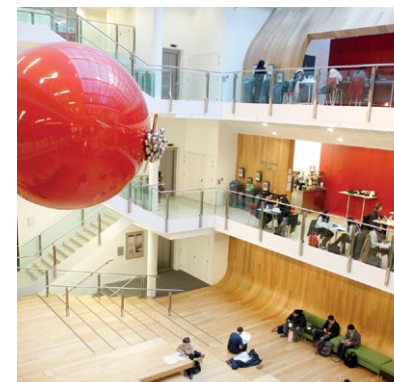
## LSE Centennial Fund (USA)

Dr Steven Bellin  
Nisa Geller  
Linda Gunther  
James Hardigg  
Risa Kiam  
Elizabeth Lane  
Bozena McLees  
Nellie Melko  
Julia Moore  
Wallace Mullin  
Daren Pietsch  
Patrick Tomczik  
Jane Trevarthen-Traub  
Swati Vashi  
Dr Vijay Vashi  
Professor George Walendowski  
Thomas Watts

## In memory

Jean Cassell (in memory of the late Frank Cassell)  
Ceinwen Elias (in memory of the late John Elias)  
James Hardigg (in memory of the late Alice Hardigg)

Eight anonymous donors



• Member of staff • Friends and Family donor • Reunion donor • Loyal donors – those who have given for five consecutive years or more.

Whilst all care and attention to detail has been taken in drawing up these lists of donors, we apologise if any errors have been made.





“ *The tradition of the LSE Annual Fund is to support priority needs and unexpected opportunities to elevate an LSE education above any other.*

*I want my legacy to continue that tradition.* ”

**Susan Fasken** BSc Sociology 1955  
LSE Annual Fund donor and Legacy Circle member

A legacy gift to LSE in your will has an invaluable impact at the School: supporting some of the best and brightest students, attracting and retaining world leading academics and developing contemporary campus facilities.

To request information on how you can make a difference by leaving a gift to LSE in your will, please contact LSE's Legacy Officer, Viet-Anh Hua, on **+44 (0)20 7852 3654** or at **legacy@lse.ac.uk**. LSE is keen to recognise and thank its supporters. If you have already made a bequest to LSE in your will but not yet let us know, we would like to thank you for your support and welcome you as a member of our Legacy Circle. Please get in touch with Viet-Anh, using the contact details above, to learn more about the Legacy Circle and the benefits of pledging your support to LSE in this way.

[lse.ac.uk/LegacyGiving](https://lse.ac.uk/LegacyGiving)

For more information contact:

LSE Annual Fund  
Office of Development and Alumni Relations  
The London School of Economics and Political Science  
Houghton Street, London WC2A 2AE, UK

Tel: +44 (0)20 7955 6081  
Fax: +44 (0)20 7955 7567  
Email: [annualfund@lse.ac.uk](mailto:annualfund@lse.ac.uk)

**[lse.ac.uk/annualfund](http://lse.ac.uk/annualfund)**

The information in this leaflet can be made available in alternative formats, on request. Please email: [annualfund@lse.ac.uk](mailto:annualfund@lse.ac.uk)

Freedom of thought and expression is essential to the pursuit, advancement and dissemination of knowledge. LSE seeks to ensure that intellectual freedom and freedom of expression within the law is secured for all our members and those we invite to the School.

The School seeks to ensure that people are treated equitably, regardless of age, disability, race, nationality, ethnic or national origin, gender, religion, sexual orientation or personal circumstances. Equality and diversity are integral to the School's priorities and objectives. We will support inter-faith and inter-cultural dialogue and understanding and engage all students in playing a full and active role in wider engagement with society.

This report is printed on recycled stock

Design by: LSE Design Unit ([lse.ac.uk/designunit](http://lse.ac.uk/designunit))

The London School of Economics and Political Science is a School of the University of London. It is a charity and is incorporated in England as a company limited by guarantee under the Companies Act (Reg. No. 70527, Inland Revenue No – X2401)