

For more information, contact:

Annual Fund

Office of Development and Alumni Relations
The London School of Economics and Political Science
Houghton Street
London WC2A 2AE

Tel: +44 (0)20 7955 6081

Fax: +44 (0)20 7955 7567

Email: annualfund@lse.ac.uk

www.alumni.lse.ac.uk/annualfund

This report is printed on recycled stock

Design by: LSE Design Unit (www.lse.ac.uk/designunit)

Photography: Nigel Stead, LSE Photographer and LSE's Office of Development and Alumni Relations

The London School of Economics and Political Science is a School of the University of London. It is a charity and is incorporated in England as a company limited by guarantee under the Companies Act (Reg. No. 70527).

The School seeks to ensure that people are treated equitably, regardless of age, disability, race, nationality, ethnic or national origin, gender, religion, sexual orientation or personal circumstances.

The information in this leaflet can be made available
in alternative formats, on request.

Please email: annualfund@lse.ac.uk

The **LSE**
Annual
Fund



THE LONDON SCHOOL
OF ECONOMICS AND
POLITICAL SCIENCE ■



Report to Donors 2008-09

LSE Annual Fund

Message from the Chairman of the Annual Fund



Thank you for contributing to the Annual Fund during the financial year ending 31 July 2009. Every single donation really does have an invaluable impact on life at LSE. This year the support of

our alumni, Governors, parents, friends and staff has enabled the School to far exceed previous years' Annual Fund successes.

This donor report aims to recognise all of you who have contributed to the Annual Fund this year and to demonstrate the diverse ways in which your support makes a difference to LSE. As you will see, the list of projects that your gifts have funded is extremely varied and strengthens almost all aspects of the School.

By donating to the Annual Fund, you are supporting the School's continued vision, ambition and commitment to educational excellence. To maintain LSE's position as one of the foremost social science universities in the world, it is crucial that our facilities and resources reflect the academic distinction for which LSE is renowned. With your support the Annual Fund can continue to bolster academic innovation; support facilities for teaching and research; increase funding for student needs; and enhance the student experience.

Thank you for your investment and I hope that you will continue to include LSE in your annual giving in the future.

Sir Michael Lickiss, BSc Economics 1955
Chairman of the Annual Fund
Director's Circle member

The Annual Fund MAKING A DIFFERENCE



Thanks to your support, the Annual Fund has had its most successful year to date. Over £790,000 in unrestricted funds have been raised which will be used to support projects that have an immediate and positive impact on everyday life at LSE. This year's donations represent a £125,000 increase on last year's totals.

Including the Government support of the Matched Funding Scheme, this year's Annual Fund contributions will be worth over £1 million to LSE, allowing even more vital projects to be funded.

In offering your support, you have not only invested in LSE today, but in its future, enabling current and future students to make the most of their opportunity to study at LSE.

Thank you.

What difference will your gifts make?

The more than £790,000 in donations raised between 1 August 2008 and 31 July 2009 will be allocated in December 2009 by the Annual Fund Allocation Advisory Group, which consists of the following members:

Andrew Farrell, Director of Finance and Facilities
Professor George Gaskell, Pro-Director, Planning and Resources
Fiona Kirk, Director of Development and Alumni Relations
Sir Michael Lickiss, Chairman of the Annual Fund
Dr Eileen Munro, Reader in Social Policy

Applications are invited from any member of the LSE community. Information about awards and how you can apply are available on the Annual Fund website at: www.lse.ac.uk/annualfund

Matched Funding Scheme

The UK Government has introduced a Matched Funding Scheme to match private cash donations to universities with public funds and encourage donors throughout the world to support English higher education. Through this scheme LSE Annual Fund donors are eligible for a 3:1 match on gifts to the Annual Fund until 31 July 2011. This means that every £3 you donate will be matched by £1 from the UK Government.



The impact of your gifts

During the period 1 August 2008-31 July 2009 funds raised in the 2007-08 financial year were distributed by the Annual Fund Allocations Advisory Group in support of 31 projects across LSE's community. Read on to find out more.

Departmental Initiatives

Chair in African Development – £100,000

Support from the Annual Fund was instrumental in enabling the School to establish its first Chair in African Development. Professor Thandika Mkandawire joined LSE in September. Of Malawian origin, he is an economist with particular expertise on development issues. Professor Mkandawire will play an integral role in the School's developing LSE African Initiative. This Initiative will engage with African institutions and talent to develop connections, encourage accessibility and promote knowledge exchange. This long-term mutual collaboration hopes to inspire and support generations of students and scholars who will themselves help effect global change.



'I hope to increase the visibility of Africa within teaching and research across the social sciences and within the global political and policy arenas.'

Professor Thandika Mkandawire, LSE Chair in African Development

Restoring the Personal and Human in 'Human Rights': Survivors of Rwanda's Genocide Speak – £4,800

As part of the upcoming 'Heroes of our Time: Rwandan Courage & Survival' exhibition, the Annual Fund has financed a trip to the UK by two Rwandan genocide survivors, Patrick Iregura and Serge Rwigamba. During their visit to the UK the survivors will be speaking on Thursday 10 December 2009 with Channel 4 News Editor Lindsey Hilsum, at a Polis Media Dialogue event entitled, 'Media and Identity: Reporting the Rwandan Genocide'. The event will reflect on how the story of the genocide was told before, during and after the brutal events. It will examine the gaps between reality on the ground during times of mass atrocity and humanitarian crisis, and the public's perception of it, as gleaned from the media, in the West. In addition to this public lecture the survivors will also be speaking to students in seminars offered by MSc courses that address human rights and development issues.

LSE: a history in pictures – £5,100

LSE: a history in pictures involves developing a major new visual resource for the School and the wider community, by digitising a selection of photographs relating to the history of the School – people, places and events – and making them easily accessible for viewing and use via the photo-sharing website Flickr. The project also wishes to encourage the School community, particularly alumni, to use Flickr's interactive facilities to share related knowledge and comments, thus adding their own memories and reflections to the 'official' history of the School.

'The generosity of the Annual Fund in funding LSE: a history in pictures will support the growing interest in LSE's unique and prestigious past, within both the School and the wider community.'

Sue Donnelly, LSE Archivist



Sidney and Beatrice Webb

MAKING A DIFFERENCE



Supporting current students

New Futures Fund: Flexible fund to support needy applicants – £50,000

The New Futures Fund supports students who have applied for financial assistance on the basis of hardship. It is an important supplementary fund to all other planned scholarships, and allows the School to deal with unexpected financial situations, so that students do not lose their chance to study at LSE. This year 22 students were assisted through the New Futures Fund.

'The New Futures Fund makes the difference, so that bright but needy applicants can take up their place at LSE.'

Sue Plater, LSE Financial Support Manager

Annual Fund Welfare Award top-up: Student Hardship and Welfare – £27,000

A grant was awarded to provide financial assistance to students who find themselves in unexpected financial difficulty. The grant ensured that specific hardship funds run by the Students' Union could continue to assist students financially, including but not limited to the Disabled Student's Fund, Repeating Student's Fund, Childcare Fund, Woman's Right to Choose Fund, and the Homeless Student's Fund.

Students' Union

Students' Union Website Redevelopment – £30,400

This project has involved a complete redesign and redevelopment of the Students' Union website, using a third-party consultancy and development company. The key objective of the project has been to provide a well-designed and logically structured website which showcases the activities of our 200 societies and sports clubs, increases participation in and accountability of our democratic structures and provides useful welfare information for students in need. The new website is to be launched during the Michaelmas term.

New Experiences at University Sport – £25,000

Sport remains an important part of life at LSE. This year the Athletics Union benefited from a grant of £25,000 from the Annual Fund to invest in new sports facilities and equipment. Through this investment the Athletics Union aims to remove barriers to participation in various sports and sporting/recreational activities and also to improve the experiences of those currently involved.



© PENGUIN PHOTOGRAPHY

'Thanks to the Annual Fund small and specialist sports now have the funding they need to grow.'

Wil Barber, LSESU Treasurer 2008-09



Grimshaw Club: Academic Trips – £5,000

The Grimshaw Club organises a series of educational and enriching trips for LSE students to various countries of political interest. This year the club has ventured to Israel, Palestine, Georgia, Iceland, Switzerland, Ukraine and Romania. The trips have allowed students to meet with prominent politicians, influential academics and LSE alumni in the respective countries to discuss pertinent issues relating to the global economy and regional security.

Pulse Radio – £4,970

Pulse Radio received an Annual Fund grant to upgrade existing IT systems. Professional quality studio space and software requires the latest IT systems to truly harness their potential and provide the best quality training and output for the LSE community. Improved editing, graphics and output capabilities have benefited not only the hundreds of students directly involved with providing content for Pulse but also the thousands amongst the School population who listen on a daily basis.



‘Support from the Annual Fund has been crucial in allowing us to update our IT equipment and provide an increasingly professional service to the students across the campus.’

Mark Harrison

Station Manager 2008-09, Pulse Radio, Anthropology 2009

LSESU Fabian Society Journal – £2,500

The LSESU Fabian Society was granted Annual Fund support to produce a social policy journal. Both undergraduate and postgraduate students, as well as other notable parties were invited to write on a wide range of issues. Whilst production and editing of the journal was undertaken primarily by the members of the Fabian Society, other affiliated societies, such as the Labour, Liberal Democrat and Social Policy Societies, contributed to the project. Thanks to Annual Fund support the LSESU Fabian Society was able to produce four issues of the journal and now hopes to secure external support for the journal in the coming academic year.

Grimshaw Club: The Politeia International Conference – £2,100

The Politeia Community is an international network of student and young professional organisations that aims to foster multilateral dialogue on national and international political, economic, social and cultural affairs, and supports the development of an international civil society. Each year the community holds a week-long conference, which in 2009 was hosted by the LSE Grimshaw Club. During the conference student participants engaged in workshops and visited NGOs, embassies and multinational companies.

Rerum Causae: Journal of the LSESU Philosophy Society – £1,400

The LSESU Philosophy Society received support from the Annual Fund for a student journal, *Rerum Causae*. The publication has showcased some of the most notable achievements of students in the area of philosophy, especially the philosophy of science. Copies of the journal have also been distributed amongst prominent universities in the UK, the USA and South America.

Events

Ralph Miliband Programme: Annual Public Lecture Series – £50,000

The Ralph Miliband Annual Lecture Programme is one of LSE’s most prestigious series of lectures. The programme was founded with the intention of advancing Miliband’s spirit of free social enquiry, as well as the diversity of thought that has always been the hallmark of LSE. Speakers last academic year included Professor Peter Singer, Martin Wolf, Will Hutton and Professor Lord Giddens.

‘Without the support of the Annual Fund the Ralph Miliband public lecture programme, one of LSE’s most prominent series of events, would not have been able to continue.’

Louise Gaskell, Deputy Events Manager

Cognition and Culture – £10,000

During the 2009-10 academic year, LSE’s Programme in Culture and Cognition will hold a special series of ten seminars, two workshops and eight lectures focusing specifically on the interface between cultural and psychological processes. LSE students will also be invited to attend informal discussion sessions and receptions, giving them the opportunity to network with invited scholars.

MAKING A DIFFERENCE



London Schools' Creative Writing Competition: 'RealLITy' – £6,000



RealLITy was a creative writing competition for London state schools, held as part of the LSE Space for Thought Literary Festival, which took place at the end of February 2009. In partnership with the LSE Student Recruitment Office, this competition aimed to build on relationships between LSE and London schools, in particular with Year 9 students who are beginning to consider their school-leaving options.

Poet in the City Events Programme – £10,000



As part of the LSE Space for Thought Literary Festival, which took place at the end of February 2009, a series of events was organised in association with Poet in the City, a charity which aims to bring poetry to new audiences. The theme of the events was 'Poetry and Ideas' and speakers included Ben Okri. The events gave LSE students, staff, alumni, and members of the public, a chance to attend events that are not normally featured as part of the LSE public lecture programme and to encourage them to think about the social sciences in a new light.

LSE-Cambridge Inter-University Graduate Conference – £6,000

The two-day LSE-Cambridge Inter-University Graduate Conference was held on 22-23 May 2009. The event, titled 'Culture, Cognition & Construction' and hosted by the Institute of Social Psychology, aimed to befriend two contradictory epistemological traditions within the discipline – constructivism and cognitivism. The conference also served as a showcase for the Institute's research.

'Thanks to the Annual Fund the conference was a resounding success, attracting graduate researchers from 13 countries, spanning four continents and a diversity of academic disciplines.'

Gordon Sammut, LSE, Institute of Social Psychology

China 2009: The Critical Point in China's Economy – £5,420

This one day forum, hosted by the SU China Development Society in January 2009, had a main focus on Chinese economic outlook for 2009 and the challenges the Chinese economy faces given the current conditions. Speakers included Chinese bureaucrats, professors from both Chinese and Western universities and Asian business executives. Around 400 people attended the event.

LSE Choice Group – £2,500

The LSE Choice Group is an interdisciplinary initiative with the active involvement of several faculty members and graduate students of different LSE departments. Their core activity is a weekly interdisciplinary research seminar, and thanks to Annual Fund support, the group has been able to significantly increase the profile of its activities. The Annual Fund grant has allowed the group to organise a series of seminars in the broad field of decision theory, which will continue into the Michaelmas Term, and to hold some focused workshops. The longer term ambition of the project is to encourage research of an interdisciplinary kind.

'Annual Fund support has enabled the LSE Choice Group to scale up activities to the extent that it had now been awarded an AHRC Network grant for 2009-11.'

Professor Richard Bradley, LSE, Professor of Philosophy

How to Deal with the Economic Crisis in Developing Countries? A Conference with Mexican Leaders – £2,000



Hosted by the LSESU Mexican Society, this one day conference attracted a range of speakers including Jesus Silva Herzog, and the Ambassador of Mexico to the UK, Juan José Bremer. The speakers focused on dealing with the economic crisis in developing countries, explaining and demonstrating how policies are made in a developing country like Mexico and how to mount a common front against economic crisis in emerging regions.

Information Systems Research Forum – £2,000

The Information Systems Research Forum (ISRF) is a seminar series organised by PhD students that focuses on recent advances in research broadly relating to information and communication systems. The main purpose of the seminars is to help cultivate a solid understanding of the diverse range of theoretical, methodological and other issues involved in Information Systems research. Thanks to the Annual Fund the ISRF was able to deliver twelve seminars during the Lent and Summer Terms 2009.



Psychoanalysis@lse Lecture Series – £2,000

The 2009-10 'Psychoanalysis and Society' lecture series aims to build upon and extend the successes of previous Psychoanalysis@lse events ('Intolerance' seminar series 2005, 'Flesh & Blood' conference 2006). The series aims to facilitate a culture of engagement that will develop unique perspectives – generated by debate between psychoanalytic and non-psychoanalytic scholars – on the current social, economic and political societal challenges facing an LSE audience. Three public lectures have been planned between October 2009 and June 2010 and confirmed speakers include Susie Orbach and Simon Critchely.

'The impact of the Annual Fund has been to facilitate a novel intellectual project within the School that would otherwise have been extremely difficult to fund.'

Dr Derek Hook, LSE, Lecturer in Psychology

An Analytical Look at Childhood in Colombia: Needs, Policies and Challenges – £1,940

Organised by the LSESU Colombia Society, the seminar aimed to expose the plight of children in Colombia and come up with possible recommendations for Colombian social policy makers. As a vulnerable population, children in Colombia are affected not only by poverty but also by violence. The conference united Colombian policy makers and representatives from key organisations such as Save the Children (UK and Colombia) and Children of the Andes, as well as LSE academics from the Department of Social Policy.



Research and Teaching

Fellowship for an International Scholar at Risk – £50,000

The Scholar at Risk scheme aims to house scholars whose life or work are at risk in their home country and who have research interests that coincide with those of the School. Currently LSE is hosting an Iraqi researcher, an Iraqi political scientist, and a Palestinian economist. Over time, with additional funding, LSE plans to host several scholars per year. The scheme is coordinated by the manager of the Centre for the Study of Human Rights in partnership with the Scholars Rescue Fund.

'Quite simply, this project [Scholars at Risk] would not have been possible without the support of LSE alumni via the Annual Fund.'



Professor Conor Gearty

LSE, Director for the Centre for Human Rights

STICERD:

Annual Fund New Researcher Awards – £50,000

These awards support the work of young researchers across the School. This year four researchers were awarded funds to promote and support their work. These awards are highly valued by the recipients and contribute to the School's desire of being able to recruit and retain young world class researchers. Research projects being undertaken thanks to these awards include Research on Dimension using Factor Models: With Applications in Finance; Training and Economic Mobility in Early Modern England; Credit Conditions, Bank Lending and the Market for Corporate Debt; and Social Legacy of Mega-Events: The Case of 2010 Guangzhou Asian Games in China.

MAKING A DIFFERENCE

Teaching Innovation Awards – £30,000

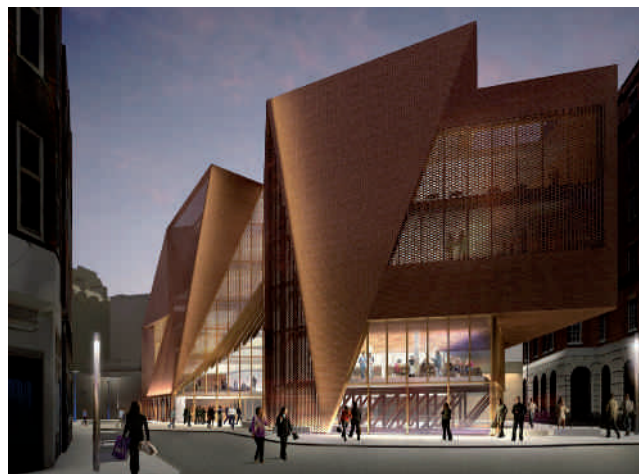
The Teaching Innovation Awards have given the Department of Accounting and the Department of Statistics the opportunity to experiment with novel approaches to improve the quality of course delivery and student learning. Both projects have been very active through the past academic year, introducing a range of innovations into their course delivery. The core undergraduate statistics module, has seen significant improvements to student examination results, with failures reduced from just under 15 per cent to 7.5 per cent and 1st/2.1 grades combined rising from 50 per cent to over 65 per cent. The Department of Accounting has also recorded increases in student satisfaction rates from 75.5 per cent to 95.5 per cent.

'The Annual Fund is providing useful and timely resources for teaching innovation. Our use of these funds focuses on large undergraduate courses which present big challenges in engaging and actively supporting students.'

Dr Liz Barnett, LSE, Director of the Teaching and Learning Centre



New Students' Centre – £45,000



This year the Annual Fund supported the next phase of LSE's campus development: the redevelopment of the St Philip's site to become the location of a new Students' Centre. These funds supported the consultation process for the project and a design competition, won by Dublin based practice O'Donnell & Tuomey Architects. Housing the Students' Union, the site will become a student hub at the heart of LSE's campus. LSE's aim is to improve the student experience at the School by creating the best student building in the world.

'A new building for the Students' Union will allow us to provide the highest quality facilities for LSE students long into the future.'

Aled Dilwyn Fisher, General Secretary, LSESU

Facilities

Campus signage – £20,000

Through its support for implementing a new signage strategy, the Annual Fund will enable the School to achieve improved visual appearance, an enhanced public image, a coordinated and professional signage system addressing the needs of all stakeholders, and the creation of a stronger campus identity. The strategy has been trialled on the New Academic Building and has helped this building establish itself as a 'benchmark' for excellence in design.

External café furniture for New Academic Building forecourt – £20,000

Thanks to the Annual Fund, the School has been able to install external café furniture on the New Academic Building forecourt. This furniture will allow customers of the ground floor eatery to enjoy *al-fresco* dining, and also help to encourage the use of the forecourt as a social space to be enjoyed by LSE staff and students alike.



Street furniture for Houghton Street – £15,000

Thanks to the Annual Fund the Students' Union will be able to benefit from new street furniture for use on Houghton Street. This furniture will be used for various student society activities. The Estates Division will be meeting with the new Students' Union sabbatical team during the Michaelmas Term to define the scope of the project, eg, Students' Union requirements in terms of aesthetics, design, location and storage.

Court of Governors

LEADING THE WAY



The School's Governors provide leadership through their support of the School and continue to lead the Annual Fund appeal with a 55 per cent participation rate and a contribution of over £63,000.

Some other Governors also give substantial support towards scholarships, core funding and other key School priorities or have set aside and documented legacies. They are also recognised in this report.

LSE's financial year runs from 1 August to 31 July

LEADERSHIP GIVING

Dr Rosalind Altmann*
Lis Astall
Dr John Avery Jones CBE*
Stephen Barclay
Sir Anthony Battishill GCB*
Professor Charles Bean
Vivina Berla*
The Rt Hon Baroness Virginia Bottomley PC
Professor Chris Brown
Angela Camber
Bronwyn Curtis OBE
Victor Dahdaleh
Howard Davies*
Roger Davies*
Mark Denning
Leslie Dighton*
Dr Christine Downton
Alan Elias
Mario Francescotti
Timothy Frost
Janet Gaymer CBE
Sir Patrick Gillam
Richard Karl Goeltz
David Goldstone*
Lord Anthony Grabiner of Aldwych QC*
Lloyd Grossman*
Sir Stelios Haji-Ioannou
Naomi Hass-Perlman
Niall Hobhouse
Johannes Huth
William Hutton
Rt Hon Lord Jacob*

Katharine Jenkins
Peter Jones CBE
Lord Judd of Portsea*
Gauri Kasbekar-Shah
Wol Kolade
Anne Lapping CBE*
Dr Spiro Latsis
Martin Lewis
Sir Michael Lickiss*
Professor Robin Mansell
Professor Peter Miller
Ashley Mitchell*
Anne Page*
Michael Peacock OBE*
Professor George Philip
Emmanuel Roman
Sir Evelyn de Rothschild
Bryan Sanderson CBE*
Professor Richard Sennett
Richard Shepherd MP*
Brian D Smith*
Cato Stonex*
Peter Sutherland KCMG
Michael Thomas CMG QC
Dr Sushil Wadhvani CBE*
Wendy Weinberg*
Hon Mrs Laura Wolfson Townsley*
Professor Robert Worcester



'I have been an enthusiastic participant in many of LSE's special fundraising projects, but I have always seen the Annual Fund as having the broadest appeal to alumni because it makes available critical help to meet an array of needs. Attracting wide support from all alumni is the key and numerous small donations, as well as the very large, are vital to the success of the Annual Fund.'

Wendy Weinberg, BSc Economics 1956, LSE Governor



'Contributing to the Annual Fund is a tangible way of giving something back to the School. It demonstrates our unconditional support for the School's continued development. It also supports the School's mission of leading and engaging debate in all the Social Sciences for the benefit of society as a whole.'

Mario Francescotti, BSc Economics 1981, LSE Governor

* Supported the School for six years or more

Reunion Giving COMING BACK, GIVING BACK



Over the years hundreds of alumni have returned to the steadily changing and expanding campus to celebrate their reunion anniversary. This year was no exception and saw a record number of alumni participating in both the reunion celebrations and the Reunion Giving Programme. These classes have demonstrated a real commitment by investing in LSE. This commitment shows the collective spirit of alumni to see LSE continue to grow and enhance its position as the leading academic centre of international excellence in the social sciences.

50th Anniversary – Classes 1959 and earlier

This reunion took place on 12 May 2009. As of 31 July 2009 the Classes of 1959 and earlier have given a combined total of £58,210 to the Annual Fund in class gifts, and £93,600 in major gifts and pledges.

45th Anniversary – Classes 1962 and 1963

This reunion took place on 19 and 20 September 2008. As of 31 July 2009 the Classes of 1962 and 1963 have given a combined total of £26,224 to the Annual Fund in class gifts, and £24,593 in major gifts and pledges.

40th Anniversary – Classes of 1968 and 1969

This reunion took place on 19 and 20 September 2008. As of 31 July 2009 the Classes of 1968 and 1969 have given a combined total of £36,862 to the Annual Fund in class gifts, and a further £122,996 in major gifts and pledges.

25th Anniversary – Classes 1984, 1985, 1986 and 1987

The reunion for our 1980's alumni took place on 10 and 11 July 2009. As of 31 July the Classes of 1984 and 1985 have given a combined total of £28,417 to the Annual Fund in class gifts, and £40,000 in major gifts and pledges.

The Classes of 1986 and 1987 have given a combined total of £34,959 to the Annual Fund in class gifts, and £257,623 in major gifts and pledges.

REUNION DONORS

1959 and earlier

Professor Rein Abel
Leo Abeles*
Dr Festus Ajayi
Richard Alexander*
James Allan CMG CBE*
David Allen*
Lady Kathleen Allen*
Frances Ambrose*
John Anderson
Merrill Anderson
Dennis Andrew
Rosemary Andrew
Sir Derek Andrews*
Dr Demetrios Argyriades
Codrington Ball*
Professor Michael Banton
CMG*
Diana Barker
Florence Barker*
Joseph Barling
Frederick Barnes*
Alec Batanero
Sir Anthony Battishill GCB*
Professor William Baumol
Robert Bax
Neville Beale
Roger Beaumont*
Deborah Beck
Sir Terence Beckett KBE
Sheila Bennett
Shirley Benson
Harold Berrisford*
Paul Biennu
John Binns*
Mary Blumenau
Frank Blumenfeld
Professor Noel Boaden*
Marjorie Bocking
Tony Bowyer
Rose Braithwaite
Gordon Brand*
Ronald Brandon
Professor Ronald Brech
Michael Brecknell*
Anthony Brennan CB*
Eleanor Bridgland

Pamela Bright
Barbara Brilliant*
Jacqueline Brody
John Brougham
John Buckland
Robert Budd*
Sir John Burgh KCMG CB
Cornelius Cacho*
His Honour Clive Callman
Dr Charmian Cannon*
Dr Isidore Cannon*
Frances Carmichael*
Ian Carr
Emmanuel Carter*
Roy Carter*
Frank Cassell
Prof Robert Cassen OBE
Ian Catty
Professor Stanley Chapman
Marilyn Charles
John Charman
Professor John Chelsom*
Diana Chudleigh
Alan Clapp
Barbara Clark
Morag Clark*
Pauline Clarke
Elizabeth Cleaver*
Harold Cohen*
Dr John Coker
Robert Cole*
Olive Coleman*
Dr John Cool*
Squadron Leader Daniel
Cooper
Dr Edwin Course
Claudine Cowan
Douglas Cracknell*
Professor Maurice Craft
Daphne Crispe
Lord Douglas Croomham*
Doreen Crompton*
John Crowe
Harry Culham*
Anthony Cunningham*
Dr Michael Curtis
Dr Gordon Daniels

Margaret Davidson
Reverend Dr Peter Davie
Professor Henry Davies
David Davis*
Ronald Davis
Bernard Day CB*
Dr Emanuel de Kadt*
David Denny*
Edward Denyer
Leslie Dighton*
John Dixon
Jeanne Downton
Alfred Dowson*
Lionel Drewitt*
Professor Myles Dryden*
Joy Dunkerley*
Ismene Durand*
Frank Earwaker
William Edlund*
Mary Elder
Olwen Eldridge
Alison Elliott-Binns
Robin Ellis
Rowena Ellis*
Michael Eltenton OBE
Jennifer Emanuel*
Dr May Eppel
Gillian Evans*
John Evans
Kenneth Faircloth OBE*
Professor Rawle Farley*
Dr Curtis Farrar
Susan Fasken*
Trevor Fenemore-Jones*
Cyril Fish
Robert Flenner
Alan Flint
Anthony Foster*
William Foulsham
Amadeo Francis
Dr Leonard Freedman*
Professor Christopher
Freeman
Reverend Bernard Gales
Marie Gately*
Eileen Geary
Doreen Getsinger



'Returning to campus in July stirred huge feelings of nostalgia of all the learning which took place, as much in the Three Tuns as in the classroom. I left LSE with a hugely international perspective, with paths cleared for exploration which I hadn't considered before. I am proud to support the School's Annual Fund, and together with Deepak Haria, Reunion Class Chair for Classes 1984-85, wish to thank all 1984-1987 alumni in joining us in making a class gift this year.'

Kathleen Kelley, Reunion Class Chair 1986-87



Ian Gilbert*
 Sir Patrick Gillam
 Professor Marianne Githens
 Michael Gitsham*
 Prof Derek Glover*
 Alan Godden
 Norbert Golding*
 Charles Goldring
 David Goldstone*
 Raymond Goodman*
 Stuart Goodman*
 Lionel Gordon*
 Dr Sara Gordon
 Lane Goss
 Armond Graham
 Dr Michael Graham
 Professor Norman Graves*
 Derek Green
 Pamela Green
 Elizabeth Gregory*
 Shirley Griffiths
 Professor Jacques Grossen
 Karl Grossfield*
 Revel Guest-Albert*
 Sheila Hallas MBE
 Lionel Halpern*
 Peter Hames
 Hon Mr Orval Hansen*
 Dorothy Harbord*
 Alice Hardigg
 Prudence Harris Watson
 Robert Hart*
 John Harwood*
 Robert Haselden*
 Brian Head*
 Godfrey Heaven
 Geoffrey Hemingway*
 Patricia Hender
 Alec Henderson*
 Ronald Henderson*
 Anthony Henry
 Michael Heppner*
 Janet Herian*
 John Herring*
 Anthony Herron
 Renate Herzog
 Mary Hilborne
 Mary Hilton-Jones
 Wilfred Hockfield
 Peter Holden*
 Brenda Holliday
 Walter Holmes
 Margaret Hooper*
 Ian Howden-Simpson MBE
 John Hulley*
 Brian Humphreys*
 Lady Iro Hunt*
 James Hunt*
 Professor Joseph Isaac
 Dr Charles Jackson
 Winifred Jackson
 Noneen Jacques
 Derek Jakes
 Roy Jones
 Sir Edwin Jowitt
 Lord Judd of Portsea*

Dr Muhammad Kamlin
 Arnold Kammerling MBE
 Kevin Kelly
 Dr Peter Kendall*
 Una Kendall*
 Christine Kennett
 Simon Kester*
 Peter Kett
 Sara Kibel*
 Donald King*
 Heinz King
 Professor Preston King
 Beryl Kingsbury*
 Judith Klein*
 Dr Thomas Klein*
 Alexander Knox
 Rosalind Lam
 Ralph Land CBE*
 Donald Last
 Frederick Lee
 Mary Lee*
 Marshall Lees*
 Robert Levinson*
 Brian Lewis
 Professor Mary Lewis
 Sir Michael Lickiss*
 Clifford Lines*
 Geoffrey Lipscombe*
 Professor Richard Lipsey
 Patricia Lloyd-Green
 Euan Lumsden*
 Dr Richard Lyman
 Donald MacGregor
 Professor Kenneth MacKinnon
 Keith Mackrell*
 Dr Federico Magnifico*
 Emeritus Professor Elisabeth Mapstone
 Dr Esther Marine
 Ian Martin*
 Dr John Martin
 June Martin*
 Edward Masters
 Richard May*
 David McAuley*
 Bernard McTigue
 Professor William Mead*
 Dorothy Mellor
 Patricia Mellor
 Mohamed Meyassar
 Professor Kenneth Minogue*
 Peter Mitchell
 Professor Jerzy Modelski
 Sylvia Modelski
 Syed Moini
 Deborah Moller
 John Monaghan
 Ian Monro*
 Paul Moreau
 Elspeth Morley*
 Angela Morris
 John Murphy
 Brian Navin*
 Dr Edward Neufeld*
 Ray Newbigin

Gabriel Newfield*
 Brenda Newman*
 Professor Gerald Nordquist*
 Eleanor November*
 Karla O'Brien*
 Roger Okill
 Denis Owen
 Dr Izzud-Din Pal
 Richard Palmer
 Peter Parker CBE*
 Anne Passmore*
 Michael Peacock OBE*
 Aileen Pebody
 Prudence Peskett OBE
 George Pharo*
 Gerald Phillips*
 Canon Frank Pickard
 Wilfrid Pickard
 Cecil Pickavance*
 John Pike CBE
 Rosemary Polack
 Dr Philip Porter*
 Barbara Powrie
 John Praksta*
 Roger Price
 Donald Purr
 Janet Pyke
 Patricia Radford
 Jennifer Railing*
 Alan Ravenscroft
 Jon Rees
 Martin Reiss*
 Betty Richardson*
 Edwin Riley
 Charles Risso-Gill
 Glyndwr Roberts
 Brian Rodmell*
 Brenda Rowbotham*
 Peggy Rowley
 John Rushton
 Philip Rushworth
 Norman Sabey
 Philip Sadler
 Marianne Schafer
 Stephen Schneider
 Robert Schweich
 Michael Sharman*
 Martin Shaw
 Margaret Shearn
 Professor George Shepherd Jr
 Lord Baron Allen Sheppard
 of Didgemere*
 Arthur Shotton*
 Khursheed Siddiqui*
 Shirley Siegel
 Martin Simmons*
 Peter Simon*
 June Simpson*
 Mary Simpson*
 Valerie Sims
 Antony Sinden
 David Slade
 Professor Gordon Smith
 John Smith*

Dr Moehamad Soerakoesomah
 Dr Abdulkarim Somjee
 Ian Soutar
 Ronald Springall*
 Professor Theodore St Antoine
 Barbara Sternberg*
 Paul Stibbe*
 Dr Jean Stirk
 Professor Bradford Stone
 In memory of Professor Alan Stuart*
 Anne Stubbs*
 Dennis Swallow
 Allen Sykes*
 Douglas Talintyre
 Anthony Taylor
 Basil Taylor
 David Taylor
 Geoffrey Taylor
 John Taylor
 Priscilla Taylor
 Michael Teitz
 Andrew Templeton
 Michael Thomas CMG QC
 Richard Thomas*
 Alison Thomson*
 Professor Irene Tinker
 Sheila Titley*
 John Toll*
 Phyllis Toms
 George Toogood*
 Joan Towle
 Joanna Trijbits-Puszett
 John Trimmer
 Kyriacos Tsioupras
 Fraser Tsuddenham*
 Laurence Turner
 William Tyldesley*
 Dr Joan Vincent
 Rosemary Wagner*
 Derek Walker OBE*
 Reverend John Walker*
 John Ward
 Brian Watkins*
 Barbara Watson*
 Barbara Watt
 Margaret Watts*
 Vernon Waughray
 Dr Janet Waymark*
 Bent Weber*
 Wendy Weinberg*
 Dr Robert Weinberg*
 Robert Weise
 Alan Weston
 Christopher Westwick*
 Christine Whatmore
 Jeffery Wheatley*
 Raymond White*
 Joan Wicken*
 Jean Wickham
 John Widdop*
 Professor William Wilbur
 Ronald Wilkens*
 Renee Willgress*
 David Williams

Dr Gethin Williams
 Margaret Williams
 Robert Williams*
 Roland Williams*
 Valerie Williams
 Alexander Wilson
 David Wilson*
 Douglas Wilson*
 Dr Enid Wistrich
 Michael Wright*
 Robert Yazgi
 Professor Jerome Ziegler

Class of 1962

Cyril Aydon
 Sheldon Baskin
 Dr Rosalind Bradford
 Sheila Bradley*
 Professor Archibald Brown CMG
 Sheila Clark*
 Frank Collins
 Robert Cook*
 Edward Cuff
 Niels de Terra
 Panos Ghalanos
 Professor John Goodman CBE*
 Stella Hall
 Michael Hart
 Kenneth Hayward
 Christine Hodgson
 Michael Horsley*
 Dr Sally Jenkinson
 Roger Kirby
 Dr David Lewis
 David Milne IV
 Arthur Moore*
 Isabel Morrison*
 John Niotis*
 Benjamin Oakley*
 John Ockenden*
 Benjamin Ofoegbu
 Margaret O'Sullivan
 Professor Noel O'Sullivan
 Cecil Oyediran
 Dr Celia Palchmayr*
 Audrey Pine*
 Sheila Pollen*
 Kathleen Rampton
 Rosemary Ross*
 Bryan Sanderson CBE
 Janet Scott*
 Dr Alexander Shakow*
 George Shapiro*
 Brian Sherrad
 William Sheward*
 Anthony Swabe*
 Sanford Takiff
 Jennifer Tanfield*
 Alan Titchener*
 Dr John Whyman*
 Rose Wong*
 Antony Wool

Margaret Wright*
 Nobuyuki Yasui

Class of 1963

Robert Adams*
 Donald Adlington*
 Malcolm Allbutt
 John Bailes*
 Margaret Banks
 Ann Beecher Brigden
 Professor Coralie Bryant*
 Zenon Carnapas*
 Ronald Creed
 Samir Datta
 Richard Delbridge
 John Dewhurst*
 Professor Rigas Doganis
 Charles Edelman
 Professor Nicholas Edsall*
 Michael Ellis
 Prudence Evans
 Brian Fisher
 Richard Goeltz*
 John Gould
 Professor William Gould IV
 John Halstead
 Brian Hardy*
 Jack Harmsworth
 Barry Hershey
 Yoshiaki Iwao
 Isabel Jeffers*
 Jonathan Jessup*
 Eunice Jukes
 Adeyemo Kester
 Harry Klahr
 David Lambert CBE*
 Anne Lapping CBE*
 Dr Roger Leigh
 Michael McMonagle*
 Joy Moore
 John Nicholson
 Professor Pier Nicola*
 Theocharis Papamargaris
 Muriel Pepper*
 Harry Reasoner Esq*
 June Road*
 Rajamani Rowley OBE
 Dr Harald Sandstrom
 Dr Ann Schneider*
 Samuel Scott
 Brian Smith*
 Marvin Solomon
 Steven Spurrier
 David Starkie
 Robert Swift*
 Dr Philip Tasch
 John Toalster
 Roy Trinder
 Professor Esther Wattenberg
 Christopher West
 Valerie Wise*

* Given to the Annual Fund for six years or more



REUNION DONORS *Continued*

Class of 1968

Elizabeth Adlington*
James Alban-Davies
Victor Aptaker
Graham Arran*
John Bieber
Martin Bojam*
Michael Bourne
Dennis Bradley*
Anthony Bridges*
Professor Chris Brown
Professor Roger Buckley
Adolphine Burkens*
Dennis Burrows*
Shirley Campbell*
Calliope Carabatsou-
Pachaki
John Cornhill*
Dr Brian Cox*
Robert Davis*
Dr Ann Denis
Professor Susan Dev OBE
Patricia Dodd Racher
John Feane*
Vincent Flynn
Jeffrey Forrest
Howard Godfrey QC
John Gower*
Robert Guthrie*
John Hamilton
David Harrison
Keith Hollands*
Professor Eno Inanga
Dorothy Jameson*
Adrian Jones*
Peter Jones*
Randa Kavar
Homi Khusrakhan
Dr Spiro Latsis
Dr Peter Leuner*
Adelaide MacMurray-
Cooper
David Malina
Barbara Marcus
Dr Alan Middleton
Paul Milmed*
Shirley Neale
James Nicholson
Jacqueline Noltingk
Dr David Pearce*
Stephen Phillips*
Anthony Platts*
Arran Poyser
Janette Pratt*
Dr Rupert Prime*
Shula Rich
Mattigud Satyanarayana*
Jonathan Schwarz
Richard Simmons CBE
Choedchu Sophonpanich
Joan Sorkin
Laurence Sorkin*
Michael Spiller*
Robert Storer
Peter Troboff*
William Vause*
Sandra Walmsley

Christine Webb
Ian Webb
Elizabeth Worth*

Class of 1969

David Alderman*
Dr Juan Angelet Cladellas
Nathene Arnaoutis
Laurence Baker*
David Barnes
Commander Peter Beazley
Joyce Bellamy MBE*
Vicky Bianco
Kay Bispham
Dr Sheila Blair
Beata Blaire
Anna Bloor
Patricia Book
Alan Brooks
Professor Giuliana Cleur
Dr John Crean
Dr Peter Davis
Roderick Denyer QC*
Stephen Doree
Roy Easson
Janet Elliott*
Diana Ellis QC
Dr Roger Feldman
Ross Fraser*
Thomas Freeman OBE
Gavin Galloway
Barry Garfield*
Dr Harold Glass
Professor Gianandrea
Goisis
Robert Grant
M Alan Griffiths*
Professor John McCamus
David Kern
Richard Kew
Firozali Laji
Brian Leonard CBE
Professor John McCamus
David McDermid
Mark McGrath
Ivor Morgan
Martyn Must
Dr Shizuya Nishimura*
Ann O'Kelly*
Ubadigbo Okonkwo
Paul Olson
Professor Marilyn Osborn
John Osborne
Chief Chukwuma Osuji
Professor Carl Parsons
Joe Pearson
Thomas Peebles
James Ramo
Professor Peter Reddaway*
Steven Riskin
Dr Lawrence Roach

David Safir
Victor Schoenbach
Richard Shepherd*
Alan Shove*
Susan Sorensen*
Michael Touff
Richard Vernon
Mollie Weatheritt
Cynthia Webster
Dr Dov Zakheim
Ruth Zilkha

Class of 1984

Juliana Almeida
Judith Amey*
Despina Andreadou*
Erik Autor
Chloe Baveystock
Mindy Berry*
Alan Blackwell
Nicholas Burt*
Dr Delio Cardoso Cezar
Da Silva
Horace Chan Hung Tak
Jeffrey Cheah*
Fook Chew
Anna Ciarrapico
Rory Connelly*
Ann Cotterrell*
Dr Alison Dean*
Manuel del Valle
Dominic Delaforce
Richard Dunn*
Marianne Ecker-Fierstone
Michael Fellows
Karen Fitzner*
Lee Gordon
Mark Greatrex
Rebecca Hadjipetri
Judith Hammond
Ruth Harte
Christine Hawkins
Richard Heckinger*
Judith Hindes*
Sabrina Ho
Andrew Holland
Stephen Hunt*
George Karageorgos
Nilesh Mehta*
Jean Oppenheimer*
Dr Rolando Ossowski
Breck Platner
Karen Pollard
Dr Christopher Probyn
Eleanor Prouty
Aled Roderick*
Roderick Roman
Jacqueline Stevens*
Geok Eng Tan
Maurizio Tassi*
Stewart Taylor*
Stuart Trow*
Hendrika Van Grevenstein-
Halbert
Rebecca Vincent-Smith*
Stuart Walker
Louise Washer

Jonathan Webb*
Andrew Wilson*
Wah Yap

Class of 1985

Ersin Akyuz
Susan Atkins
Dr Joseph Barling
Kim Barling
Eric Blank*
Detmar Blow
Vincent Budesa*
Philip Cheadle
Steven Cohen*
Caterina Colombo*
Andrew Cooper
Dr Carolyn Davies*
Christian De Visscher
Ebba Dohlman*
Evan Drutman
Richard Dunn*
David Evans*
Kristen Garnett
Julian Green
Allen Grimes III
Gregory Gullickson*
Deepakkumar Haria
Normah Hashim
Andrew Hornbrook
Lady Elspeth Howe of
Aberavon CBE*
Lawrence Hudson
David Hunter*
Paul Jaffe
Dr David Janner-Klausner*
Dr Thomas Kaiser-
Stockmann
Dr Vijay Kannan
Amadu Kanu
George Karageorgos
Janice Karlak
Antony Kelly*
Barbara Lamb
Michael Langman
Kim Huat Lee
Andrew Levy*
Kay Lister
Dr Ingo Luge*
Dr Laura Markow*
Mary McArthur
Marguerite McMahon
Maira McNamara Schoen
Peter Middlehurst*
John Mierins*
Stephen Newell*
Professor Brendan O'Leary
Dr Edwin Passes*
Lesley Pavincich*
Thomas Pine*
Dr Christopher Probyn
Alison Rankin Frost
Susan Read
Charles Rossmann
David Rubin
David Simmons*
Shalini Sujanani
Thomas Tendorf*

John Thornton Jr*
Annemarie Van Der Meer
Dr David Van Zandt
Kenneth Venables*
Sonam Wangdi
Dr Martin Wright*
Mohamed Yahya

Class of 1986

Ersin Akyuz
Carol Atack
Susan Atkins
Inge Badura
Stuart Barber
Bernadette Baxter*
Andrew Butterly
Vincent Camerlynck
Anna Ciarrapico
Dr Paul Ciccantell
Dr Andrew Clark*
Caterina Colombo*
Tamsen Endicott*
Dr Timothy Ensor
Laura Epps
Rodrigo Fiaes
Joshua Friedlander
Anthony Gould
Janet Grenier*
George Hawthorn*
Dr Hector Hernandez-
Garcia De Leon
Kathleen Kelley
Anne Layman
Michael Lebrecht*
Yong Siang Lim
Dr Maria Lorentzon*
James Masson
Nicholas Millar*
Michael Moszynski
Dr William Paget*
Alan Peakall
Sarah Priestnall
Rajan Raichoor
Karina Robinson*
Marion Rout
Dr Richard Schwartz*
Katherine Scott*
Shakunt Shah
Christine Shields
Kenneth Sigas*
Howard Smith*
Joseph Springer
Dr Elizabeth Stewart
Cato Stonex*
Lucy Stylianou
Michael Surgalla Jr
Norman Tuogood
Nancy Troxler*

Marie Marina Vassilicos
Sebastian Ventour
Dr Sushil Wadhvani CBE*
David Wah
Betty Walsh*
Nicholas Wigdahl
Professor Holger Wolf
Dr Athina Yiannakou
Jeanne Ziminski*

Class of 1987

Elizabeth Botsford
Dr Dierk Brandenburg*
Sarah Bronzite
Michael Brooks*
Rebecca Campbell
Christian Chavagneux
Richard Clarke*
Mark Cox*
Daniel Elliott*
Edwin Fountain
Timothy Frost
Dr Till Geiger*
David Gilmore
Adam Glinzman*
Deborah Gross
Lorna Harrison
Faisal Hassan
Peter Holgate*
Constantinos Kazakos
Colleen Keck
Stephen Kiar
Theodore Kim
Yin Tong Kon
David Korduner
Mei Fung Liem
Yong Siang Lim
Mitchell Mackler
Ian McPherson
Daniela Monacelli
Ovais Naqvi
Professor David Power*
Dr Gabriel Quiros Romero
PhD
Diana Rau*
Elizabeth Reimann
Dr Eleni Rizakou*
Kathryn Robson
Dr Mark Rogers*
Stephen Rogers
Dr Mark Roomans
Christine Shields
Dr Melvin Small
Alistair Summers
Hilary Till
Professor Alberto Toffoletto
Marie Marina Vassilicos
Dr Andrea Venanzetti
Keith Wade*
Richard Warren*

* Given to the Annual Fund for six years or more

Friends and Family

OUR GLOBAL COMMUNITY



'As a parent, I am delighted to participate in the LSE Annual Fund. Monies raised through the Annual Fund have a direct impact of the life of my son and that of his peers. I am thrilled that my son is receiving a world class education at LSE and am pleased to do my small part to support this invaluable institution.'

Dr Prabodh Mistry, member of the Friends and Family Programme;
parent, 2nd year Economics student

FRIENDS AND FAMILY DONORS

Sophie Aaron-de Bernis
Shirin Akhtar
Svetlana Aliyeva
Tahir Aliyev
Konstantinos Anagnostopoulos
Khalid Ansari
Samina Ansari
Artemis Antoniadou
Mary Attalides
Graham Avis
John Bailey
Yvonne Bailey
Christine Banfi
James Banfi
Patrick Bannigan
Sarah Bannigan
Mike Barton
Penny Barton
Colin Bevan
Kathleen Bevan
Lynn Blunt
Robin Blunt
Harry Boys
Sally Boys
John Casey
Helena Casey
Chi Hin Chan
Siu Wah Chan
Naresh Chhatralia
Nita Chhatralia
Dr Adrian Clarkson
Dr Shirley Clarkson
Patricia Colle
Patrick Colle
Maureen Collins
Mike Collins
Peter Cotton
Trudi Cotton
Graham Count
Christopher Creese
Janet Creese
John Davidson
Sue Davidson
Karon Deakin
Keith Deakin
Viviane Doan
Nivedita Doshi
Paloo Doshi
Stephen Dunne
Carol Durrant

Thomas Durrant
Ali Ebrahim
Zuleikha Ebrahim
Dr Alan Edwards
Kay Edwards
Marion Fitzgerald
Linda Gaskell
Paul Gaskell
Simon Gately
Marios Genagritis
Pola Genagritou
George Georgiou
Neeta Gokal
Nitin Gokal
Susan Grant
Eleanor Green
Gerald Green
Barry Greenby
Rhona Greenby
Dr Juergen Grossmann
Dr Philippa Groves
Cliff Hamilton
Marion Hamilton
Satako Hanyu
Yusaka Hanyu
John Hays
Lynne Hays
Eng Kia Hee
Jennifer Hein
Charles Herlinger
Diane Herlinger
Adrian Hodgson
Christine Hodgson
Annette Howlin
Neil Howlin
Madame Meow Chia Hua
Farhat Hussain
Mian Hussain
Mussarat Hussein
Nazir Hussein
Christiana Imoukhuede
Philip Imoukhuede
Qumar Islam
Samia Islam
Jean-Claude Jacomin
Brace Jaffe
Shoshana Jaffe
Gita Jobanputra
Spyros Karnessis
Vassiliki Karnessis

Chris Keljik
Doreen Keljik
Syeda Khanom
N King
Andrew Kite
Marie Kite
David Lamb
Geraldine Lamb
Katherine Lawrence
Ted Leavitt
Vicky Leavitt
Eleanor Leung
Dr Peter Leung
Ranjit Mahal
Resham Mahal
Ping On Mak
Dr David Martill
Gillian Martill
Doris Meades
Joreme Meyer
Linda Meyer
Roland Meyer
Giovanna Michelson
Magda Mierzevska
Kamini Mistry
Dr Prabodh Mistry
Satish Mittal
A Moreland
Brian Moreland
Emilie Morris
Saul Morris
Chystala Mouktaris
George Mouktaris
Susan Muhwezi
Damian Murphy
Patricia Murray
Patrick Murray
Jiten Nagar
Prettibala Nagar
Philip Niem
Shukuko Onishi
Lilian Oorthuysen-Dunne
Dr Halyna Ovcharenko
Edward Owusu-Sannah
Patricia Owusu-Sannah
Jong-Bum Park
Bharati Patel
Dakshesh Patel
Beatriz Pessoa de Araujo
Paulo Pessoa de Araujo
Dr Hannes Plank
Mag Karin Plank
Paraskevi Polyzogopoulou

Glyn Price
Helen Price
Dominique Prieur
Joel Prieur
Shafiqur Rahman
Amita Raval
Naresh Raval
Andrew Riches
Tina Riches
Katherine Robertson
Axel Rohm
Patrizia Rohm
Lesley Roots
Martin Roots
John Russell
Marianne Russell
Fabrizia Scassellati
Annie Shah
Dipesh Shah OBE
Mohammed Shahid
Denise Sillience
Paul Sillience
Alison Smedley
William Smedley
Hyo-Sook Song
Heike Staab
Dr Dorothee Strunz
Dr Heinrich Strunz
Chanan Syan
Jasbir Syan
Poh Tan
Petrina Terdjman
Christos Theocharides
Nedie Theocharides
Cristina Thomas
David Thomas
Elena Vassiliadou
Elaine Warren
Paul Westacott
Sarah Westacott
Doug Wilcox
Sheila Wilcox
Jane Williams
Peter Williams
Kenneth Wong
Wendy Wong
M H Yeo
S C Yeo
Seven Anonymous Donors

RECOGNITION OF GENEROUS SUPPORT



'Institutions of higher learning like LSE are committed to studying the problems of the past and present with a view to creating a better future. It is important for us to continue supporting the School on a regular basis so that funding constraints do not prevent it from continuing the excellent work for which it is renowned world wide.'

Carsten H A Stoehr

MSc (Econ) Politics and Government of Western Europe 1993

Chairman's Circle

Thank you for making a leadership gift of £5,000 or more to the Annual Fund during the last financial year.

LSE's financial year runs from 1 August to 31 July

CHAIRMAN'S CIRCLE MEMBERS

Adele Biss
Abib Bocresion
Victor Dahdaleh
George Davidson
Roger Davies*
Christian Dosch
Luca Ferrari
Lynn Forrester de Rothschild
Lord Anthony Grabiner of
Aldwych QC*
Julian Green
Susan Green
Dr Juergen Grossmann
Mounir Guen
Stefan Guetter
Deepakkumar Haria
Laurent Haziza
Jon Hillestad
Arnold Kammerling MBE
Spyros Karnessis
Vassiliki Karnessis
Bertrand Kan*
Maria Ketvel
Niko Ketvel
Nina Kostic*
Dr Spiro Latsis
Martin Lewis
Grace Oei*
Ping On Mak
Beatriz Pessoa de Araujo
Paulo Pessoa de Araujo

Brian Roper MBE*
Margaret Roper*
Choedchu Sophonpanich
Henrietta Stephen MBE*
Carsten Stoehr*
Cato Stonex*
Peter Sutherland KCMG
Dr Sushil Wadhvani CBE*
Hon Mrs Laura Wolfson
Townesley*
Sir Evelyn de Rothschild
Two Anonymous Donors

LSE Centennial Fund (USA)

Stewart Feldman
Fabrizio Gallo
Richard Karl Goeltz*
Kathleen Kelley
Stephen Hays
David Heleniak
Jonathan Rosen
Hilary F Till
David Wah
One Anonymous Donor

LSE Foundation Canada

Kitson Vincent

Singapore LSE Trust

Chin Chai Ooi



The Chairman's Circle dinner, hosted by Peter Sutherland KCMG, took place on 9 June 2009 in the Senior Common Room at LSE. There were a record number of attendees. Thank you to all who attended and who gave leadership gifts at this level.

* Given to the Annual Fund for six years or more

Director's Circle

Thank you for making a supportive gift of between £1,000 and £4,999 to the Annual Fund during the last financial year.



'As a young man studying for my first year of A levels in Nairobi, Kenya, I had a huge passion for English and English Literature combined with a burning desire to be a lawyer. My class tutor who was on secondment from England made the decision that there was only one university for me – LSE. As a good student, I followed his advice and the rest is history.

LSE was the making of me and I have benefited hugely from being connected with such a respected institution.'

Ramesh Vala OBE, LLB 1976



LSE's financial year runs from 1 August to 31 July

DIRECTOR'S CIRCLE MEMBERS

Helen Abbott	Timothy Frost	John Mehigan	Robert Swift*	Michael
Khalid Ansari	Barry Garfield*	Ahmet Mesinoglu	Henry Tai	Longthorne*
Samina Ansari	Amir Gehl	Professor Peter	Andrew Templeton	Mark McGrath
Nicholas Archer*	William Gibbons	Miller	Peter Terry*	Dr Kevin Michaels*
Marcella Arnow *	Professor Lord	Ashley Mitchell*	John Trimmer	Laurence Morse
John Bailey	Anthony Giddens	Eryl Morris*	Ramesh Vala OBE*	James Nicholson
Yvonne Bailey	Sir Patrick Gillam	Carolina Mueller-	Sebastiaan Van Den	Eric Penanhoat*
Ahmed Balamesh	David Goldstone*	Moehl	Berg	Gary Perlin*
Stephen Barclay	Dr Francis Goodall	Patricia Murray	Ernest Yeung	Frederick Peters
Thomas Batten	Fumihito Gotoh	Patrick Murray	Wai Yung	Michael Peterson
Vivina Berla*	Loyd Grossman*	Mahmood Noorani	John Ward	Michael Price
Clare Birks*	Gonca Gürsoy	Richard Osband	Robert Williams*	James Ravindran
Charles Bishop	Artunkal*	Roger Paice	Two Anonymous	Harry Reasoner
Dr Mary K Blair*	John Gyles	Constantinos	Donors	Esq*
Dr Helen Bolderson	Narinder Hargun	Papadopoulos		Joseph Rotondo*
Keith Bolderson	Renate Herzog	Peter Paul	LSE Centennial	Lata Krishnan Shah
Piers Butler	Edmund Hodgson	Michael Peacock	Fund (USA)	Joan Sorkin
John Carrington*	Rt Hon Lord Justice	OBE*	Daniel Akerson	Laurence Sorkin*
Andrea Cheng	Jacob*	Michael Pearson*	Edgar Ancona*	Dr Patricia Stockton
Duncan Clark	Peter Jones CBE	George Pharo*	Nora Ancona	Marc Stuart
Patricia Colle	Randa Kawar	Dilip Rasgotra	Dr Henry Armour	Sanford Takiff
Patrick Colle	Colleen Keck	Dr Mark Roomans	Anne Bingaman	Nancy Troxler*
John Crowe	Chris Keljik	Bryan Sanderson	Steven Cohen*	Bruce Tuchman
Harry Culham*	Doreen Keljik	CBE	Guy Elliott	
Philip Cutts*	Fiona Kirk	Rossella Schiavini	Eric Fastiff *	German Friends
Howard Davies*	Omar Kodmani	Annie Shah	Breht Feigh	of LSE
Richard Delbridge	Alexander Koriath	Dipesh Shah OBE	Demetris	Dr Thomas Kaiser-
Professor Susan Dev	Fabienne Kwan	Richard Shepherd	Giannoulas	Stockmann
OBE	Alex Lee	MP*	Dr Jacques	
Leslie Dighton*	Frederick Lee	Lord Sheppard of	Gordon*	LSE Singapore
Richard Dunn*	Chao Leong	Didgemere*	Marc Grossman	Trust
Alan Elias	Sir Michael Lickiss*	Richard Simmons	Faisal Hassan	Lelia Lim
Daniel Elliott*	Mei Fung Liem	CBE*	David W Heleniak	
Rowena Ellis*	Lady Jane Lloyd of	Regina Simpson*	Barry Hershey	
Diana Eyre	Berwick MBE*	Frank Siu	Patricia Houston	
Kenneth Faircloth	Malcolm London	Brian D Smith*	William Hughes	
OBE*	Keith Mackrell*	Giuseppe Spadafora	Leon Jacobson*	
Mario Francescotti	Professor Richard	David Starkie	Paul Kaplan*	
Gene Frieda *	Macve	Austen Steers	John Kendall*	
Lynn Frieda	Sir Andrew Manzie	Dr Dorothee Strunz	Alexandra Korry	
Alison Rankin Frost	KCB*	Dr Heinrich Strunz	Albert Lilienfeld*	



The Director's Circle champagne reception took place on 11 March 2009 following a lecture by Howard Davies entitled, 'The G20: What to Expect', in the New Academic Building. There were 40 people in attendance at this event.

* Given to the Annual Fund for six years or more



'The comparative analytic approach I learnt at LSE provided me with invaluable tools for my academic research and teaching. I support LSE so that it can continue to provide those who will be tomorrow's leaders with the foundation they need to analyse and solve the issues they will confront.'

Professor Janice Bellace, MSc (Econ) Industrial Relations and Personnel Management 1976

LSE's financial year runs from 1 August to 31 July

CLEMENT'S CIRCLE MEMBERS

Donald Adlington*
Elizabeth Adlington*
Ersin Akyuz
John Aldridge
Dr Haider Ali
Carol Attack
Laurence Baker*
Josephine Barry-Hicks*
Professor Charles Bean
Merene Botsio
Vincent Camerlynck
Sheila Clark*
Douglas Cracknell*
Bronwyn Curtis OBE
Professor Frederick D'Agostino
Dr Peter Davis
Guillaume Descottes
Arthur Dove CBE
Lionel Drewitt*
Kirk Economou*
John Evans*
Nicola Farrell*
Joseph Fitz
Marios Genagrits
Pola Genagritou
George Georghiou
Professor Christopher Gilbert*
Charmaine Griffith*
Howard Godfrey QC
Lionel Gordon*
Reynard Hanoppo
Brian Hardy*
Marie Hargun
Robert Hart*
Christine Hawkins
Dr Hector Hernandez-Garcia De Leon
John Herring*
Wilfred Hockfield
Professor John Hutton*

Costas Iacovou
Dr Sally Jenkinson
Arnold Kammerling MBE
Alexander Knox
Yoshiko Koizumi*
Anne Lapping CBE*
John Lee
Mary Lee*
David Leeke*
Donald MacGregor
Peter Magyar
Professor Robin Mansell
Emeritus Professor Elisabeth Mapstone
Dorothy Marden
Rosemary Martin-Jones*
Maureen McCarthy*
Robert Miall*
Kamini Mistry
Dr Prabodh Mistry
Marius Moller
Emmanouil Molympakis
Ian Monro*
Diane Morris
Michael Moszynski
Susan Muhwezi
Professor Ian Nish*
Dorothea Papadopoulou
Jong-Bum Park
Ian Pleace*
Miguel Ramos-Fuentenebro*
Peter Randall
Martin Reiss*
Andrew Riches
Tina Riches
Aled Roderick*
Axel Rohm
Patrizia Rohm
Navinchandra Shah
Peter Simon*

Hyo-Sook Song
Dr Lesley Smith*
Ivy Tao
Dr Philip Tasch
Michael Thomas CMG QC
Dmitriy Timoshin
Erik Ulvestad*
Elena Vassiliadou
Vernon Waughray
Giles Wilkes
Roland Williams*
Irene Wong
Rose Wong*
John Wood-Collins*
One Anonymous Donor

LSE Centennial Fund (USA)

Dona Bainbridge
Sheldon Baskin
Professor William Baumol
David Beecken
Professor Janice Bellace*
Harry Blaney III*
Burt Blodgett
Fred Brettschneider
Mark Davis*
Donald Dinan*
William Dombrowski
Dr Christine Downton
Karen Fitzner*
Brian Gilmore
Dr Harold Glass
Nicholas Groombridge
Gregory Gullickson*
Richard Heckinger*
Dr Jens Hilscher
Peter Hosinski
Nicolaos Katsoulis
Paul Kennedy*
Michael Langman

John McKay
Rick Michaels
Syed Moini
Patrick Mulligan*
Kathleen Newland
Anthony Paduano
Thomas Perez-Ducy*
Dr Gordon Peterson
Ruth Porat
Carl Robertson Jnr*
Michael Ross*
David Satola
Clifford Sethness*
Scott Silverman
Bedi Singh*
Marc Sobel*
Dr Judith Stoikov
Dr John Strudwick
Michael Thomas
David Turetsky
Charles Wainhouse
Wendy Weinberg*
Dr Robert Weinberg*
Maurice Wilcox
Dr Robin Zablow
One Anonymous Donor

LSE Foundation Canada

Dr Patrick Kenniff*
Rajeeb Mukherjee
Dr John Pattison

German Friends of LSE

Dr Ingo Luge*

LSE Singapore Trust

Ming Yu Chan
Wah Kheong Leong

* Given to the Annual Fund for six years or more

Houghton Street Circle

Thank you for your generous gift of between £250 and £499 to the Annual Fund last financial year.



'LSE is a unique institution and an amazing place to study and explore new ideas. It was a privilege to attend such a fine school and I am only too happy to give something back so that others may have the opportunity to experience LSE.'

Captain Don Ludlow, MSc International Relations 1997

LSE's financial year runs from 1 August to 31 July

HOUGHTON STREET CIRCLE MEMBERS

Sophie Aaron-de Bernis
Robert Adewunmi
Rafael Alves De Almeida
Dr Rosalind Altmann*
Konstantinos Anagnostopoulos
Sir Derek Andrews*
Dr Juan Angelet Cladellas
Artemis Antoniadou
Josephine Armistead
Nathane Arnaoutis
Graham Arran*
Susan Atkins
Dr John Avery Jones CBE*
Dr Yusuf Bangura
Dhruv Batra
Sir Anthony Battishill GCB*
Bernadette Baxter*
Stefan Benedetti
Professor Patrizio Bianchi*
David Bird*
Eric Blank*
Robert Bluett*
Patricia Book
Richard Bowen*
Dr Bernardino Branca
Dr Dierk Brandenburg*
Hubert Brandts*
Michael Brooks*
Professor Chris Brown
John Buckland
Bridget Campbell*
Peter Capel*
Emmanuel Carter*
Bidisha Chakraborty
Satjinder Chander*
Mr John Charman
Christian Chavagneux
Professor John Chelsom*
Fook Chew
Rachel Chia*
Professor Giuliana Cleur
Alison Cox*
Sidney Cox*
Dr Luigi Crosti*
Amanda Culhane
Dr Riccardo Curcio
Robin Darton*
Dr Grace Davidson-Burnet*
Roderick Denyer QC*
Hugh Derbyshire
John Dewhurst*
Pierre Dinan
Farhad Dizadji
Sally Doganis
Professor Rigas Doganis
Ebba Dohlman*
Nivedita Doshi
Paloo Doshi
Michael Eaton*

Christian Edger*
Robert Edmonds*
Erik Ehnimb
Neville Eisenberg
Diana Ellis QC
Francis Ellis
Aidar Fakhrouddinov
Dr Marcus Fedder
Nicholas Fernyhough*
John Ferrari
Rodrigo Fiaes
Professor Stanley Fischer*
Professor Patrick Flood
Bruno Fontaine*
Eddy Fonyodi
Nicholas Fowler*
Ross Fraser*
Thomas Freeman OBE
Dr Lynne Friedli*
Paraskevi Galani
Stavros Gatopoulos
Anna Gaworzewska
Janet Gaymer CBE
Dr Till Geiger*
Tobias Gewolker
Adam Glinzman*
Isobel Godlove Mozley
Jeffrey Golden
Rita Golden
Michael Goldstein*
Nico Goossens
Derek Green
Pamela Green
Janet Grenier*
John Grumbart
Christoph Haas*
Alexis Hadjipavlou
Margaret Hall*
Alexander Hamilton
Laura Harvey
Dr Frances Healy*
Georges Helminger
Malcolm Herring*
Anthony Herron
Sabrina Ho
Jack Hodder*
John Hodgson*
Professor Janet Holland
Brenda Holliday
Lady Elspeth Howe of Aberavon CBE*
Rossana Howgrave-Graham
Lady Iro Hunt*
William Hutton
Christiana Imoukhuede
Philip Imoukhuede
Professor Joseph Isaac
Jean-Claude Jacomin
Stefan Jaeger
Professor Ian Jeffries

Dr Jacques Jeugmans
Adrian Jones*
Felicity Jones
Peter Kaithan
Christodoulos Kaloyeros*
Gopinath Karunakaran
Gauri Kasbekar-Shah
Dr Peter Kendell*
Adeyemo Kester
Peter Kett
Adnan Khan
Jennifer Kingsley*
Yin Tong Kon
Andrey Kuleshov
Anne Layman
Hon Ms Emily Lau
Katherine Lawrence
David Lawton
Isaac Legair
John Leigh*
Mark Lemmon
Brian Leonard CBE
Dr David Levy
Siobhan Lewington*
Heather Lewis*
Professor Roy Lewis
Rosalia Lloret
Stefan Long
Euan Lumsden*
Fiona MacDonald
Dr Federico Magnifico*
Steven Marshall*
Dr Kent Matthews
Patrick Memmorrow
Dorothy Mellor
Prof Kenneth Minogue*
Chief Anthony Mogboh
Dr Wendy Momen
Virginia Morck
Harold Mozley*
Philip Muelder
Dorlin Muresan
Kristen Nelson
Ray Newbigin
Gabriel Newfield*
Hatsumi Nishioka
Francis Nosek III
Paul Nugent
Margaret O'Sullivan
Professor Noel O'Sullivan
Patrick O'Sullivan*
Dr Peter Oberlechner
John Ockenden*
Roger Okill
Erich Opfermann*
John Osborne
Cecil Oyediran
Anne Page*
Egly Pantelakis
Dr Edwin Passes*
Alan Peakall

Stefanie Pieper
Rosemary Polack
Paraskevi Polyzogopoulou
Alan Porter
Michael Power OBE*
Arran Poyser
Dominique Prieur
Joel Prieur
Hilmary Quarmby*
Dr Sagib Qureshi
Christine Revoy*
Betty Richardson*
Dr Lawrence Roach
Karina Robinson*
Rajamani Rowley OBE
Ilkka Ruoppila
Philip Sadler
David Safir
Anshuman Saikia
Anthony Schlesinger*
Rene Schneider
Dr Rosa Scoble*
Mihir Shah
Vladimir Shopov
David Simmons*
Miroslaw Siwczyk
Dr Peter Slabschi
Jeremy Smilg*
Christopher Smith*
Ronald Smith*
Miguel Solana
Laurence Solomons*
Stefanos Spathakis
Maria Stamouli*
In Memory of Professor Alan Stuart
Ian Syers*
Professor Toshihiko Tanaka
Bo Tang
Nadhawan Tanyongmas*
William Taylor
John Thornton Jr*
John Toll*
Eithne Treanor
Professor Alison Trotter
Stuart Trow*
Kyriacos Tsioupras
Stratios Tsitsopoulos
Stuart Valentine
Georgios Vitogiannis
Keith Wade*
Adia Wahid
David Wailen*
Barbara Watson*
Ian Webb
Jonathan Webb*
Stephanie Whitehead*
Renee Willgress*
Margaret Williams
Meriel Wilmot-Wright*
Michael Wright*
Dr Hin-Yan Wong

Elizabeth Worth*
Ronald Wright*
Carl Wu
Nicolas Xydis
Dr Athina Yiannakou
M H Yeo
S C Yeo
Alexander Zakharchenko*
Ruth Zilkha
Michael Zuckerman
Four Anonymous Donors

LSE Centennial Fund (USA)

Robert Adams*
Professor Rein Abel
James Alban-Davies
The Hon Thomas Ammons III
Dr Demetrios Argyriades
Kevin Bacon*
Professor Robert Banks
Michael Barr
Eric Blank*
Christopher Bodell
Robert Brager
Jacqueline Brody
Robert Burka*
Thomas Carothers*
John Casey
John Charman
Sunjin Choi
Gregory Clapp
Brian Curran*
Jorg Decressin*
Leon Desbrow*
Dr Otto Doering III*
Joy Dunkerley*
John Durkin
Frank Earwaker
Charles Edelman
Dr R Elson
Professor Rawley Farley*
Dr Curtis Farrar
Courtney Fennimore*
Terry Fokas*
Candice Foss*
Colin Gilbert
Lee Gordon
Sujata Gosalia
Hon Michael Guhin*
Alice Hardigg
Jason Hellwig
Samuel Itam
Troy Johanson
James Johnson*
John Kerr Jr
Nora Kerr
Kenneth Kinney*
Kathryn Koch
Dr Carol Lancaster*
Jonathan Lapin
Wallace Lee

Robert Levinson*
Shaun Maguire
David Milne IV
Zahra Nawaz
Caroline Niemczyk
Steven Niemczyk
Nancy Nollen
Professor Stanley Nollen
Jean Oppenheimer*
Lisa Peterson
Michael Radt
Jennifer Railing*
Kenneth Rivkin
Linton Sarver
Joel Silverman
Joy Smallwood
M Spitzer Jr
Richard Straus
Margaret Suralik
Dr Curtis Tarnoff*
Michael Teitz
John Thornton*
James Van Doren
Wendy Vandame
William Vigdor
Harold Wackman
Jeffrey Weinberg*
Jared Weisfeld
Frederic Weiss
Marvin Wexler*
Dr John Williams
Eric Zachs
One Anonymous Donor

LSE Foundation Canada

David Alderman*
Dr John Crean
Robert Douglas
Real Forest
Gregory Hilton-Sullivan
Fareen Jamal
Captain Donald Ludlow
Ian Morrison*
Dr Edward Neufeld*
Professor Ranjan Roy
Dr Abdulkarim Somjee
Robert Stoddart
Cynthia Webster
Christine Whatmore

German Friends of LSE

Inge Badura
Roger Kiem
Jane Park
Peter Raddon

* Given to the Annual Fund for six years or more



'Although I was a student way back in 1947-1950, I have never forgotten those days at LSE which did so much to shape my subsequent life. Partly through my twin brother, now Emeritus Professor at LSE and through my son's student years there, I have kept in touch with the School, greatly helped by alumni reunions and events and have gladly been a modest contributor to the Annual Fund.'

Ralph Land CBE, BSc (Econ) International Trade and Development 1950



LSE's financial year runs from 1 August to 31 July

BEAVER'S CLUB MEMBERS

Leena Aalto	Sir Terence Beckett	Dr Isidore Cannon*	The Rt Hon Baroness	Kay Edwards	Gaurav Gollerkeri	Michael Heppner*	Richard Kew
Leo Abeles*	KBE	Dr Delio Cardoso	Jean Corston PC	Jan Egge	Neeta Gokal	Charles Herlinger	Ghulam Khan
Abdurahman Acerol*	Amanda Beddows-	Cezar Da Silva	Louis Cote	David Eggleton	Nitin Gokal	Diane Herlinger	Hamida Khan
Artemis Achilleos	Adams	Robert Carey	Charles Crebbin*	Janet Elliott*	Professor John	David Heycock CBE	Sara Kibel*
Kamran Ahmad	Leena Beejadhur	Frances Carmichael*	Ronald Creed	Michael Eltenton OBE	Goodman CBE*	Martin Hill	Donald King*
Nimat Ahmed	Malcolm Bell	Zenon Carnapas*	Fernando Criado	Beatrice Engstrom-	Constance Gore*	Julian Hirst*	Heinz King
Peter Aimufua*	Andreas Bender	Roger Carroll	Alonso	Bondy	Dr Paul Gorecki*	Andrew Hochhauser	Ralph King*
Bernd Ainedter	Sheila Bennett	Roy Carter*	Lord Douglas	Dr May Eppel	Julia Goschalk	QC	Roger Kirby
Dr Festus Ajayi	Mohamed	Professor Jose	Croham*	Alexandros Ethelontis	Stephen Goschalk*	Adrian Hodgson	Takako Kitano
Aysecan Akarli	Benslimane	Casas-Pardo	Vincenzo Crupi	John Evans	Dimitra Goudoufa	Christine Hodgson	Harry Klahr
Mahmood Al Alawi	Bengt Berg	John Casey	David Crutch*	Eduardo Facha	George Goutis	Andrew Holland	Judith Klein*
Stephen Alambritis*	Dr Peter Berwert	Frank Cassell	Martin Curwen*	Garcia	John Gower*	Keith Hollands*	Dr Thomas Klein*
James Allan CBE*	Colin Bevan	Aleksandra Cavoski	Shalini Dadlani	David Fairlie	Susan Grant	Nathaniel Holtham	Dr Bernhard Klement
George Alexakis*	John Bieber	Alwin Chan	Jeffrey Dale	Susan Fasken*	Professor Norman	Lukas Holub	Barbara Kolator*
Richard Alexander*	Doreen Binks*	Ciedic Chan	Ushang Damachi	Christian Feghali	Graves*	Diana Home	Akiko Kosukegawa*
Tahir Aliyev	Detmar Blow	Edward Chan	Morgane Danielou-	Trevor Fenemore-	Margaret Griffiths	John Home*	Bipin Kotecha
Svetlana Aliyeva	Susanna Blum	Professor Stanley	Doumbouya	Jones*	Shirley Griffiths	Keir Hopley*	Matthew Kovalick
Khalil Alli	Gentilomo	Chapman	Dr Gordon Daniels	Xinyue Feng	Jeremy Grose	Alan Horncastle	Katharina Kraak
Hilary Anderson*	Frank Blumenfeld	Baldev Chavla*	Paolo Dardanelli	Patrick Fergusson	Professor Jacques	Claire Horsley	George Krimizis
Irena Andrassy	Lynn Blunt	Philip Cheadle	Paul Dare*	Jose Fernandez-	Grossen	Willem Horstmann	Knut Kroepelien
Despina Andreadou*	Robin Blunt	Wai Cheng	Alexander Darmoo*	Da Ponte	Stuart Grostern*	Margaret Horwich*	Peter Kuit*
Dennis Andrew	Professor Noel	Professor Anthony	Samir Datta	Marcin Fiejka	Dr Philippa Groves	Roger Housechild*	Florian Kuszniar
Amanda Anthony*	Boaden*	Cheung GBS	John Davies	Tony Finding	Maria Gryllaki	Graeme Howard*	Anna-Maria
Antonios Antonakis	Martin Bojam*	Dr Carmencita	Margaret Davies	Lucy Findlay*	Sigridur	Katharina Hoyland	Kyriakopoulou
Victor Aptaker	Vlaria Bojkova	Cheung	Jack Davis*	Brian Fisher	Gudmundsdottir	Dr Peter Hughes*	Alexis Lagoudakis*
Lynne Archibald	Terence Boley*	Nareesh Chhatralia	Professor Henry	Alan Flint	Casilda Guell	Brian Humphreys*	Paul Lambert
Daniela Armean*	Paul Boothroyd*	Nita Chhatralia	Davies	Federico Flora	Revel Guest-Albert*	Farhat Hussain	Ralph Land CBE*
Professor John	Rewa Bouji	Wen-Te Chiang	Ronald Davis	Vincent Flynn	Sharmila Guha	Mian Hussain	Bernadette Langan
Armstrong	Adrien Bourdon-	Kevin Chidgey*	Sharon Daye*	Dr James Foreman-	Francesca Guinane	Greta Hyde*	Kim Lansdown*
Michael Ashcroft	Fenieu	Thomas Christiansen	Charles De Gannes	Peck*	Peter Gunn	Masami Ichimiya	Michael Lavrysen
Hassan Asmal	Coral Bower	Maria Christofidou	Seema De Silva	Jeffrey Forrest	David Gwilym-	Colin Iles*	Ted Leavitt
Lis Astall	Dennis Bradley*	Diana Chudleigh	Mungo Deans*	Wagner Freitas	Williams*	Professor Eno Inanga	Vicky Leavitt
John Atherton*	Gregory Branch	Dr Stefano	Szymon Dec	Yataro Fujii	Rebecca Hadjipetri	Kay Ingram	Roger Lee
Mary Attalides	Rose Braithwaite	Cianferotti*	Dr Constantine	Simon Gabrijelcic	Emily Haithwaite*	Chan Ivan	Dr Alan Leech*
Gordon Au	Ronald Brandon	Elena Cirillo	Delicostopoulos	Stephen Gallant	Stella Hall	Yoshiaki Iwao	Susanne Lehne
Thomas Aubrey	Professor Ronald	Anna Ciarrapico	Yiola Demetriou*	Clive Gallier	Lesley Hallett	Derek Jakes	Dr Susan Lesser
Ilkay Aydogdu	Brech	Dr Adrian Clark*	Dr Alison Dean*	Gavin Galloway	Stephen Hallett	Roelof Jacobs	Dr Peter Leuner*
Dr Gerben Baaker	Michael Brecknell*	Richard Clarke*	Dominic Delaforce	Elena Garcia de la	Lionel Halpern*	Paul Jaffe	Martin Lewis*
Tsovinar Babayan	Anthony Brennan	Peter Clarke OBE*	Michael Denham	Fuente*	Howard Halpern	Alexander Jan*	Ola Liaen*
Diana Bacic*	CB*	Dr Adrian Clarkson	David Denny*	Ignacio Garcia-Téllez	Montecino	Changaz Jan	Vinh Lieng
Ann Baker*	Matthew Brettler	Dr Shirley Clarkson	Edward Denyer	Mayoral	Peter Hames	Dr David Janner-	Yong Siang Lim
Dr Marcia Balisciano	Anthony Bridges*	Deborah Cohen	Rakshit Desai	Eugenie Garganas	Cliff Hamilton	Klausner*	Clifford Lines*
OBE	Barbara Brilliant*	Harold Cohen*	Christian De Visscher	Simon Gately	Marion Hamilton	Isabel Jeffers*	Lim Liong Kee
Codrington Ball*	Robert Brockman*	David Cole	Professor Nicos	Eileen Geary	Judith Hammond	Richard Jeremy	James Lister
David Bamford*	Helmut Brokelmann	Graham Cole*	Devletoglou	Andrea Generale*	Peter Handscomb	Jonathan Jessup*	Fong-Yu Liu*
Diana Barker	Sarah Bronzite	Olive Coleman*	David Devons*	Maria Georgiou	David Hanson	Gita Jobanputra	Toby Locke*
Joseph Barling	John Brougham	Arnaud Colin De	Terence Dignan*	Panos Ghalanos	Satako Hanyu	Graeme Jones*	Louise Locock*
Dr Joseph Barling	Jeremy Brown*	Verdiere	John Dixon	Dr Ioannis Giannikos	Yusaka Hanyu	Hugh Jones	Dr Maria Lorentzon*
Kim Barling	Professor Archibald	Stephen Collins	Viviane Doan	Efstathios	Temtsel Hao	Sir Edwin Jowitt	Pirjo Lumme
David Barnes	Brown CMG	Lee Collyer*	Sheree Dodd*	Giavrogrou*	Roula Harfouche	Lord Judd of Portsea*	Evren Lus
Frederick Barnes*	John Brownlee*	Andrew Colman*	Sally Dolle	Norman Gibbs*	Vivek Harinarain	Jospe Julia *	Alessandra Lustrati*
Anthony Baron	Robert Budd*	Professor Fabiano	Christopher Down	Johannes Gielen	Jack Harmsworth	Oleg Kalnichevski	Guadalupe
Claudia Barrachi*	Oliver Bull*	Colombini	Jeanne Downton	David Glass*	Ian D Harrison*	Dr Dimitrios	Machinandiarena
Mike Barton	Adolphine Burkens*	Michael Connah*	James Dry	Professor Derek	Ian M Harrison*	Kalodoukas	John Macrory*
Penny Barton	Dennis Burrows*	Maria Consoli*	Andrew Duguid	Glover*	Ruth Harte	Jyoti Kamath	Ranjit Mahal
Alec Batanero	Nicholas Burt*	Robert Cook*	Donald Dunning*	Peter Gluckman*	John Harwood*	Shavak Kapadia	Resham Mahal
Robert Bax	Mark Callingham*	Andrew Cooper	Patrick Dupont-Liot	Hideki Goda	Mark Hawthorn	Jiro Kashiwagi	Sa'ad Malik
Neville Beale	His Honour Clive	Rahele Cooper*	Alan Eastbury	Alan Godden	John Hays	Christos Katsanos	Maria Mamone
John Beard*	Callman	Dr Anne Corbett*	Miriam Edelman	Professor Gianandrea	Lynne Hays	Mary Kawar	Marc Mansfield
Maurice Beard*	Dr Charmian	Michael Cordingley*	Geoffrey Edge	Goisis	Alec Henderson*	Penelope Kegerreis*	Marc Mansfield
Pamela Beck*	Cannon*	Sylvain Coriat	Dr Alan Edwards	Norbert Golding*	Anthony Henry	Christopher Kemp	Dr Gabrielle Marceau*

Professor Maria Marcuzzo*	Patrick Okonmah Paul Olson	John Rimmington Dr Eleni Rizakou*	Thomas Tendorf* Harun Tepe	LSE Centennial Fund (USA)	Thomas Hardy Maureen Healy*	Hon Carol Rehm Jr* Professor Peter Reddaway*	Frank Collins Peter Dabbikheh
Julius Markides Michael Murray	Shukuko Onishi Tariq Osmany	June Road* Glyndwr Roberts	Niels de Terra Petrina Terdjman	Onyema Afulukwe Mehdi Alhassani	Carlton Henry* Fiona Hodgson	Dr Wolf Reitsperger Marilyn Riethmuller	Dr Ann Denis Richard Fraser
Pamela Marsh Alexander Marshall	Dr Rolando Ossowski Professor Gianmarco Ottaviano*	Christoph Roescher Andrew Rogerson	Dr Paul Thalmann Christos Theocharides	Augi Anagnostou Karen Anderson	Dennis Horn Andrew Hornbrook	Thomas Roberts* Diane Rosen	Ilan Gewurz Donald Gracey
Eva Martensson* Dr David Martill	Edward Owusu-Sannah	Rosa Rojas Vertiz Contreras	Nedie Theocharides Graham Thomas*	Merrill Anderson Anne Appgar	Arthur Howe Angela Hsu	Michael Rosin* Arthur Rypinski	Dr Michael Graham Iain Grant
Dr John Martin Raul Martin Arranz	Patricia Owusu-Sannah	Roderick Roman Joyce Rosser *	John Thomas Richard Thomas*	Rodrigo-Nicolas Aragon-Salinas	Jonathan Hung James Hunt*	Anna Sabasteanski Raffaele Sadun*	John Grant Dr Richard Gregor
Gillian Martill Ian Martin*	Andrew Oxley Dr William Paget*	Marion Rout Claire Rouvin	Tudor Thomas Professor Nicholas Tilley OBE	Sotero Arizu Dr Charles Armstrong*	Nizar Jetha Dr Dale Johnson*	Sumit Saigal Matthias Sainz	James Harlick Kim Henderson
Peter Martin* James Masson	Clifford Paice* Sathaporn Paisanburapa	Philip Rushworth Dawn Russell*	John Toalster Professor Alberto Toffoletto	Bruce Katz* Leonard Keating III Robert Keber*	Dr Jan Kalicki* Ryan Kantor	Mark-Andre Saucier-Nadeau	James Lebo QC Kevin Love
Anthony Masters* Roy Mateer	Dr Celia Palchmayr* Anselmo Paolone	Tariq Sadiq* Anjali Sakhrani	Neil Tomkins* Phyllis Toms	James Arsenault Eunsook Baek Jennifer Baek	Bruce Katz* Theodore Kim Professor Preston King	Professor Fabio Schiantarelli	Cameron MacKay Adam Mauntah
Constance Mather Jean Mathieson*	Panayiota Papadiamantaki	Stephen Saltaire Paul Samuels*	Nikhil Treebhoochun Roy Trinder	Marc Baum Deborah Beck	Dr Ann Imlah Schneider*	Dr Ann Imlah Schneider*	David McDermid Ross McLeod
Roland Mathys Tsunako Matsumoto	Harry Papageorgiou Theocharis	Madanjeet Sandhu Ricky Sandhu	Fraser Tuddenham* Laurence Turner	Ricardo Berner Sulkin Jane Berner*	Victor Schoenbach Jonathan Schofield	Victor Schoenbach Jonathan Schofield	John Mierins* Joy Moore
Mary McArthur David McAuley*	Papamargaris Aikaterini	Roger Sansom* Nikos Savvakis	Juan Urrutia Ybarra Dr Edwin Van De Haar	Mindy Berry* Kenneth Bialo Daniel Bivins	Thomas Krackiewicz* Nils Krahe	Robert Schweich John Schwinn	Professor Mary Mossman
Christine McCulloch Stephen McKeever	Papanikolaou Dr Bala	Kathleen Scanlon Bradley Roderick Scarth	Dr Edwin Van De Haar Annemarie Van Der Meer	Stanley Black* Gene Blahato William Blake	D Kratchman Layne Kruse*	Marc Sennewald Lamin Sesay	Costanza Musu Jason Pantalone
Sebastian McKinlay* Michael McMonagle*	Paramanathan* Joon-Pyo Park	Fabrizia Scasellati Dr Michiel Scheffer	Hendrika Van Grevenstein-Halbert	Edith Boehler Anindita Bose	Brian Lee Dr Michael Leonasio	Jonathon Sethna James Shaffner	Timothy Powers Georges Robichon*
Professor Ronald McQuaid*	Weon Hee Park William Parker*	Stephen Schneider Ernest Schusky	Peter Van Strijthem Dr Judith Van Walsum-	Dr David Levering Lewis Professor Mary Lewis	Dr David Levering Lewis Professor Mary Lewis	Dr Alexander Shakov* Stanley Shepard *	Walter Ross* Christina Swindells
Professor William Mead*	Panayiotis Parilalides Professor Carl Parsons	Carlos Schuster Chayla Dr Richard Schwartz*	Dr Judith Van Walsum-Stachowicz*	Stephen Linaweaver Dr Robert Litwak*	Stephen Linaweaver Dr Robert Litwak*	W Sherb Raghu Bans Singh	Dennis Thomas Ailsa Wiggins
Doris Meades Luis Medina	Kevin Parris Professor Roberto Pasca Di Magliano	Stephen Scott Alexey Seleznev *	Marie Marina Vassilicos	Kay Lister Benjamin Loewy Christopher Looney	Kay Lister Benjamin Loewy Christopher Looney	Dr Ramteen Sioshansi Jared Smith	Worku Yifru
Nilesh Mehta* Beatriz Meldrum	Nigel Passmore* Fernando Pastor	Neel Shah Shakunt Shah	William Vause* Roberto Velasco	David Loughran Timothy Louie Douglas Lowell	David Loughran Timothy Louie Douglas Lowell	Dr Ramteen Sioshansi Jared Smith	
Duncan Melville* Penelope Mendelsohn*	Saleela Patkar Thomas Patronis	Sofia Shakil Ash Sharma	Dr Nicolai Vella Falzon	Dr Richard Caruso Mary Cascio Horace Chan Hung Tak	Dr Richard Caruso Mary Cascio Horace Chan Hung Tak	Leslie Smith-Porter Ilene Solomon	Dr Helmut Ahlfeld
Dr Melvina Metochi Ian Meyer*	Lawrence Pattinson* Lesley Pavinich*	Michael Sharman* Philip Vergaauwen*	Dr Andrea Venanzetti Sebastian Ventour	Dr Paul Ciccantell Jeremy Clift	Dr Paul Ciccantell Jeremy Clift	Konstantinos Spaliaras Thomas Sponsler	Dr Ulrich Balz
Roland Meyer Vassilis Michalopoulos	Thomas Pearson* Aileen Pebody	Wing Man Shea Stanley Shek	Sebastian Ventour Philip Vergaauwen*	Peter Clunie William Cobbett	Peter Clunie William Cobbett	Michael Stalneckner Marshall Steeves*	Holger Emmert
Magda Mierzewska Francine Miller*	Giovanni Pegoretti Fionuala Pender	Daniel Sheldon Professor George Shepherd Jr	Philip Vergaauwen* Richard Vernon	John Connor* Dr Stephen Cooney	John Connor* Dr Stephen Cooney	Barbara Sternberg* Christopher Stetson	John Flower
Ioannis Mitakidis Peter Mitchell	Paul Pennington-Smith Muriel Pepper*	Professor George Shepherd Jr Brian Sherrad	Gregory Vincent Moritz Von Hirsch	Dr Stephen Cooney William Coulter	Dr Stephen Cooney William Coulter	Sandie Stringfellow* Michael Surgalla Jr	Hans-Jurgen Hummel*
Dr Muriel Mitcheson Brown	Ana Perez Espartero Paola Pereznieto Del Prado	Wei Shi Christine Shields	Goetz Von Peter Ioannis Vouras	Elizabeth Crompton* Karen Cross	Elizabeth Crompton* Karen Cross	Jeremy Taylor Michael Touff	Dr Bernhard Junemann*
Panagiotis Mizios Deborah Moller	Paola Pereznieto Del Prado Gudrun Persson	Saiko Shimada Dr Hyun Shin	Jonina Waagfjord Emi Wakizaki	John Dailey Dr Stephen Davis*	John Dailey Dr Stephen Davis*	Emmy Tracy Jane Trevarthen-	Elisabeth Mueller
Daniela Monacelli John Monaghan	Eric Peter Andreas Petsas	Enrique Sibauste Arosemena	Reverend John Walker* Professor Sandra Wailman*	Olugbenga Dawodu Stephanie Dencik*	Olugbenga Dawodu Stephanie Dencik*	Michael Marek Susan Marks	Dr Gerd Mueller-
Arthur Moore* Jossi Mordal*	Dorothy Pettitt* Professor George Philip	June Simpson* Mary Simpson*	Sandra Walmsley Sonam Wangdi	Robert Dudiak* Anne Dwane	Robert Dudiak* Anne Dwane	Richard May* Douglas McKenna	Brockhausen Sadya-Anne Ndoko
Paul Moreau Elspeth Morley*	Andrew Phillips Tebb Barbara Piga Serra	Antony Sinden Deborah Singerman	Richard Warren* Timothy Watkinson*	Susan Eddy* Dr Hall Edison	Susan Eddy* Dr Hall Edison	Michael Surgalla Jr Dr Daniel Szpiro*	Wilhelm Nehring
Dr Jacob Moreh A Moreland	Thomas Pine* Dr Johanna Pinggera	Brian Small Alison Smedley	Brian Watkins* Professor Peter Watson*	William Eidlund* Professor Nicholas Edsall*	William Eidlund* Professor Nicholas Edsall*	Jeremy Taylor Michael Touff	Khursheed Siddiqui*
Brian Moreland Takeshi Mori	Professor Giuseppe Pisauro Anthony Platts*	William Smedley John Smith*	Professor Peter Watson* Oliver Weeks	Jason El Koubi Stuart Erickson*	Jason El Koubi Stuart Erickson*	Emmy Tracy Jane Trevarthen-	Dr Cornelia Ulbert
Isabel Morrison* Gillian Mottram*	Nigel Platts Karen Pollard	Keith Smith Peter Smith*	Muna Wehbe Dr Ivan Weir	Alan Exelrod David Evans*	Alan Exelrod David Evans*	Traub* Chin-Fan Tsang	Achim Wiechert
Chystala Mouktaris George Mouktaris	David Potter* Professor David Power*	Judith Spells Nikolaus Spieckermann-Hutter	Michael Weston* David Whipple*	Genie Fernald-Heimbigner	Genie Fernald-Heimbigner	John McLees John McLees	One Anonymous Donor
Peter Mueller Damian Murphy	Alexander Prentice* Dr Norman Price JP	Michael Spiller* Elizabeth Spiro	David Whipple* Raymond White*	Dr Edwin Feulner Jr* John Flattery	Dr Edwin Feulner Jr* John Flattery	Mark Medlinsky Robert Megna	
John Murphy Catherine Murray	Roger Price Donald Purr	Ronald Springall* Akis Spyropoulos	George Whiting Nigel Whittaker	Edwin Fountain Stephen Foxman	Edwin Fountain Stephen Foxman	William Meserve* Sami Mesrou	Rakesh Vohra
Emanuele Musso Martyn Must	Donald Purr Jill Quaipe	Dr Moehamad Soerakoesoemah Susan Sorensen*	Nigel Whittaker Dr Urs Wickihaldler	Christopher Frasch* Dr Barbara Freed	Christopher Frasch* Dr Barbara Freed	Franklin Wallis Teresa Walsh	Davin Vounasis
Marianthi Mystakidou Ovais Naqi	Katherine Rabeau* Philipp Raddant	John Stanley Christopher Starr*	Richard Wilding Gerta Wilford	Amadeo Francis Hon Stuart Friedman	Amadeo Francis Hon Stuart Friedman	Aaron Walters Spencer Ware	Franklin Wallis
Dr Mario Nava* Dr Kathleen Newman*	Patricia Radford Branslav Radulovic	John Stewart Elisabeth Steeman*	Oliver Weeks Muna Wehbe	Dr Beth Fuchs* Professor Marianne Githens	Dr Beth Fuchs* Professor Marianne Githens	Louise Washer Gregory Watson*	Teresa Walsh
Dr Karl Newton Philip Niem	Serge Raffard Rajan Raichoor	Ronald Springall* Akis Spyropoulos	Dr Ivan Weir Michael Weston*	Raymond Goodman* Anthony Gould	Raymond Goodman* Anthony Gould	Matthew Weinbaum Jeremy Weinberg*	Aaron Walters
Malinee Nimboonchaj Voraratana	John Ralli* Rishi Ramkissoon	Dr Hans-Martin Stockmeier	David Whipple* Raymond White*	Gould IV John Granato III	Gould IV John Granato III	Scott Weiner Robert Weise	Paul Milmed*
Nimboonchaj John Niotis*	Vedad Ramljak Alan Ravenscroft	Michael Spiller* Elizabeth Spiro	George Whiting Nigel Whittaker	Nathalie Granato Robert Grant	Nathalie Granato Robert Grant	Judith Reinitz West Warren White*	Professor Jerzy Modelski
Dr Shizuya Nishimura*	Kenneth Ravenscroft Douglas Rawlinson*	Elizabeth Steeman* Paul Stibbe*	Nigel Whittaker Dr Urs Wickihaldler	David Evans* Genie Fernald-Heimbigner	David Evans* Genie Fernald-Heimbigner	David Williams Sheila Williams	John Morrocco
Takashi Nishiwaki Alexander Nizan	Nicholas Rayden Nicholas Raymond*	Dr Gethin Williams Elizabeth Williscroft	Richard Wilding Gerta Wilford	Dr Edwin Feulner Jr* John Flattery	Dr Edwin Feulner Jr* John Flattery	William Wilson Scott Withycombe	John Morrocco
Mia Norcuso Stephen Nussey	Jon Rees David Reynolds	Alexander Wilson Andrew Wilson*	Oliver Weeks Muna Wehbe	Edwin Fountain Stephen Foxman	Edwin Fountain Stephen Foxman	The Hon John Woodcock Jr	John Morrocco
Wendy O'Conghaile James O'Grady*	Sean Rickard* Maurizio Tassi*	Lucy Stylianou Shalini Sujanani	Dr John Yates * Roman Yazbeck	Stephen Foxman Christopher Frasch*	Stephen Foxman Christopher Frasch*	Dr Dov Zakheim Professor Jerome Ziegler	John Morrocco
Philip O'Keefe Timothy Oake		Dmitry Surovtsev Allen Sykes*	Dr Lucio Zanon Di Valgiurata	Dr Barbara Freed Amadeo Francis	Dr Barbara Freed Amadeo Francis	One Anonymous Donor	John Morrocco
Benjamin Oakley* Benjamin Ofoegbu		Julian Szego Dr Cecilia Tacoli	Athens Zographos 26 Anonymous Donors	Dr Barbara Freed Amadeo Francis	Dr Barbara Freed Amadeo Francis		John Morrocco
Ubadigbo Okonkwo		Douglas Talintyre		Dr Barbara Freed Amadeo Francis	Dr Barbara Freed Amadeo Francis		John Morrocco

* Given to the Annual Fund for six years or more.

Staff and faculty

KEEPING LSE ON TOP



LSE not only makes an impact on the lives of students, it can also be an immensely rewarding and unforgettable experience for members of staff, who have always played a fundamental role in the School's continued success and commitment to educational excellence.

Some members of staff also choose to support the School by making a financial contribution to the Annual Fund and this kind of institutional support can be vital in enabling the School to secure additional funds from other sources and foundations.

LSE's financial year runs from 1 August to 31 July

LSE STAFF AND FACULTY

Mary Abolfazli
William Abraham
Dr Gerben Bakker
Dr Tanya Beauregard
David Berridge
Dr Mary K Blair*
Howard Davies*
Laura Harvey*
Kevin Hogan
Nathaniel Holtham
Felicity Jones
Fiona Kirk
Alexander Koriath
Dr Timothy Leunig
Professor Richard Macve
Mark Maloney
Professor Robin Mansell
Susan Marks
Professor Peter Miller
Dr Karl Newton
Professor George Philip
Dr Silvia Posocco
Kirsty Ramage
Kathleen Scanlon Bradley
Dr Hyun Shin
Regina Simpson*
Julian Szego
Clare Taylor Gold
Viet Anh To
Erica Wald



'I see the LSE as a place where money does not matter, where we focus on other things that are far more important. Hardship funding, campus improvements, support for the Students Union and all the other Annual Fund initiatives help to make this happen. As a member of staff, I am proud to contribute.'

Dr Gerben Bakker, LSE, Lecturer in Management, Department of Economic History and Department of Management



'As a fundraiser working to raise support for activity across the School, I have seen first hand the transformative role of the Annual Fund. I decided to support the Annual Fund having seen the thoughtful process of applying the immensely valuable unrestricted funding to such diverse projects as support for refugee scholars, the establishment of the new Chair in African Development, provision for current students in financial difficulty, support for events and exhibitions at LSE, Students' Union facilities and the LSE Archives. The Annual Fund enables LSE to respond flexibly to provide support for creative and innovative developments which exemplify all that is positive about LSE.'

Felicity Jones, LSE, Manager, Trusts and Foundations



* Given to the Annual Fund for six years or more.

Annual Fund callers

CONNECTING WITH YOU



This year the Annual Fund Calling Programme has raised over £115,000 through the generous support of our donors. This has been made possible through the continued hard work of the student callers and the generous donations made by our alumni, Governors, parents, friends and staff.

We made thousands of calls to members of the LSE community, who have not only given financially, but also their time, to engage with the students. In return we have kept them informed about the latest developments at the School and how their kind donations have been used.

I have, as always, enjoyed listening to these conversations and I appreciate the hard work that so many people have put in to making the Calling Programme a success.

We look forward to talking with you again in the 2009-10 academic year.

David Berridge, Annual Fund Caller Manager



'Having never been involved in fundraising before I have thoroughly enjoyed my initiation into the world of alumni relations here at the LSE Annual Fund. Being a student caller has given me the opportunity to speak to and get to know such a wide variety of ex-LSE students.'

I have spoken to alumni who attended the School 50 years ago and been regaled with their tales of the LSE. I have loved working as a student caller and keenly encourage students and alumni to get involved with and give back to our School.'

Aisling Carlson, MSc Political Theory



'Having gained fundraising experience in the United States, I was happy to join the Annual Fund as it combines two things I love: philanthropy and alumni relations. I have had a wonderful time speaking to the most interesting LSE alumni, and sometimes persuading them to contribute to our projects! Working here builds great relationships and is never dull, enabling conversations I will remember for a long time. The Annual Fund is an essential LSE resource, and I have been very happy to be a part of it.'

them to contribute to our projects! Working here builds great relationships and is never dull, enabling conversations I will remember for a long time. The Annual Fund is an essential LSE resource, and I have been very happy to be a part of it.'

Alecsa Vlaicu, MSc International Relations

We would like to thank our student calling team for all their hard work this year!

STUDENT CALLERS

Student supervisors

Ammar ul Alam, BSc Economics
Valerie Hartwich, MSc Social and Public Communication
Chantal Lawrence-Carr, BSc Accounting and Finance
Tom Legge, LLB Law
Eunice Ng, LLB Law
Alecsandra Vlaicu, MSc International Relations
Hannah Williams, BSc Government and Economics

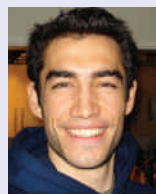
Student callers

Emily Anderson, MSc International Relations Theory
Nimmi Ariyaratne, MSc Development Studies
Aisling Carlson, MSc Political Theory
Georgina Davidson, LLB Law
Devrim Dirlik, BSc Economics
Ankit Gandhi, MSc Management and Strategy
Charlotte Gerada, BSc Social Policy with Government
Jerusha Kimani, BSc Government and Economics

Arber Koci, BSc Philosophy, Logic and Scientific Method
Po Ling Loke, BSc Economics
James McGibney, MPA Public Policy and Management
Anh Ngo, General Course
Mark O'Connor, MSc History of Empires
Muhammad Pandit, BSc Accounting and Finance
Jacqueline Renner-Thomas, BSc Social Policy
Vicente Salazar, MSc Social and Public Communication
Xinyu Sim, BSc Social Policy
Timur Topalgoekceli, BSc International Relations
Jasmin Virdee, MSc Development Management
Hong Ngan Vu, BSc Operational Research
Yen Vu, BSc Social Policy

Student administrators

Clara Graefin von Luckner, BSc Management
James Gunnee, LLB Law



'Calling alumni across all time zones not only made me experience in real-time the historically international and open-minded character of the School, but also the countless stories which bind every single one of us to this institution. Supporting the Annual Fund is a first step in enabling future students to have those same benefits and privileges that we have as students at the LSE. I am now curious to see what it feels like to be on the other end of the telephone line!'

Timur Topalgoekceli, BSc International Relations

Global participation

The Annual Fund is supported by donors worldwide. Last year we received donations from alumni and friends in 75 countries.

Armenia 1	Bulgaria 1	Ghana 1	Japan 19	Monaco 1	Poland 3	Sri Lanka 1	United Arab Emirates 1
Australia 11	Canada 107	Greece 63	Jordan 1	Morocco 1	Portugal 2	Sweden 7	USA 816
Austria 14	Chile 2	Guadeloupe 1	Kenya 1	Netherlands 20	Romania 1	Switzerland 50	Virgin Isles UK 1
Bahrain 2	Cyprus 30	Guyana 1	Kosovo 1	New Zealand 5	Russia 4	Taiwan 2	
Belgium 26	Czech Republic 2	Hong Kong 39	Lebanon 1	Nigeria 7	Saudi Arabia 1	Thailand 9	
Bermuda 4	Denmark 3	Iceland 4	Lithuania 1	Norway 17	Serbia 1	Trinidad and Tobago 3	
Bosnia and Herzegovina 1	Egypt 1	India 11	Luxembourg 7	Oman 2	Singapore 21	Turkey 7	
Brazil 4	Finland 3	Indonesia 2	Malaysia 5	Pakistan 4	Slovenia 2	Uganda 2	
Brunei Darussalam 1	France 43	Ireland 10	Malta 2	People's Republic of China 4	South Africa 2	UK 1883	
	Germany 50	Israel 2	Mauritius 3	Philippines 1	South Korea 2	Ukraine 2	
		Italy 59	Mexico 8		Spain 23		

Thank you

Thank you to everyone who has supported the Annual Fund in the last year, helping us to achieve our most successful year to date. Every single gift really does make a difference and so we recognise all our donors in an online donor honour roll. If you are unable to see your name here, please look on our website: www.alumni.lse.ac.uk/annualfund

Thanks also to those of you who have consistently contributed to the Annual Fund over the years. Your continued support is invaluable to the School's long-term work and development.

The list below recognises donors who have given a gift worth up to £100 to the Annual Fund and other annual appeals for six years or more.

Although we take every care to ensure these details are correct, we apologise for any errors or omissions in the listings throughout this report.

LOYAL ANNUAL DONORS

LSE's financial year runs from 1 August to 31 July

Christopher Alexander	Tracey Croucher	Winifred Keeves	Swati Paul	Mie Starbuck	Dominic Endicott
Sir Roy Allen	Dr Pantea Eteassami	Joan Kennedy	Robert Pedlingham	Michele Stern	Kristen Furlan
David Anderson	John Fearn	Milan Khatri	Margaret Pegg	Alan Stevens	Vanessa Gallagher
Margaret Angell	Howard Feather	Pamela King	Professor Anna Pellanda	Penelope Stowe	Dr Darril Hudson
Peter Aspbury	Therese Fox	Kanatta Kyazze	Custoza	Andreas Straub	Christopher Layton
Elizabeth Atkins	John Freeman	David Lamb	Sigtryggur Petursson	Kathleen Straub	Samuel Livermore
Tuan Jin Aw	Pamela Furness	Aynsley Lammin	David Pilcher	Ouida Taaffe	Emily Looney
Eleanor Baber	Gillian Fitcher	Graham Leamy	Professor Robert Pinkney	Dr Sailesh Tanna	Jonathan Mirsky
Roderic Beale	Emile Galipeau	Professor Audrey Leathard	Dr Nikolas Polyzos	Richard Tatlow	Dr Michael Montgomery
Phillip Beaumont	Dilys Gardiner	Dr Michael Levin	Adrian Pope	Max Telling	Geoffrey Oblak
Sandra Becucci	Colin Garlick	Ann Lewis	Jacob Prager	Dr Mary Tiffen	Thomas Polk
Diane Bethel	Michael Gates	Elizabeth Lewis	Peter Rackham	Joan Towers-Perkins	Charles Reynolds
Vikas Bhardwaj	Brijinder Gobindpuri	Richard Lewis-Jones	Jacqueline Radcliffe	Frederick Trinder	David Rose
Seema Bhatnagar	Robert Gould	Terence Lewthwaite	Roger Raymond	David Turner	Eric Secoy
Daphne Bichard	Brian Granger	Alberto Lidji	Helen Redesdale	Frances Turner	Dr Douglas Shier
Richard Blow	Professor Steven Greer	Robert Lightfoot	Joy Reynolds	Andreas Varlaam	Margaret Sibbitt
Celia Bower	Paul Groden	Richard Lingham	Patricia Riedl	Jonathon Venn	Thomas Songer
Eric Bowman MBE	John Harris	Dr Erik Lithander	Kenneth Riley	Victor Villalobos Diaz	David Steinberg
John Broughton	Mark Harris	Pamela Llewellyn	Dr Amanda Robinson	Willem Vinke	Dr Roger Upson
Janet Burrows	Beresford Harrison	Christopher Lock	Natalie Rogers	Dr Giorgio Volpe	Gregory Von Gehr
Hugh Butcher	Maria Hatzipetrou	Bryan Long	Barbara Rose	Benjamin Wales	William Webber
Christine Carson	Patrick Hawke-Smith	Bryan Luckham	Barbara Roweth	David Walker	
Dr April Carter	Jean Hennessy	Hilary Makepeace	David Rudd	Peter Walls	LSE Foundation Canada
Dr Lionel Carter	Donald Hepburn	Professor Gerald Mars	Harvey Sadur	Clare Warne	Dr C Banfield
Peter Cawley	Christian Hesselhoj	Jeremy Marsh	Ruth Samson	Peter Waymark	Krysha Derbyshire
Anthony Chapman	John Hewitt	Carolyn Martin	Susan Sandbach	Michael Whitehead	J Luneau
Evangelia Charitoudi	Professor Sheila Hillier	Maureen McAlindon	Sean Saunders	Bruce Wood	
Shirley Charles	John Hilton	Paul McCabe	Charles Savin	Ruth Wood	German Friends of LSE
Lynne Chilvers	Harry Hogg	Caroline McGraw	Emmanuel Schatz	Susan Yates	Gabriela Krader
Margaret Clapham	Sally Holloway	Kenneth Mears	Dr Gunter Schlusche	Andreas Yennadiou	Andre Schneider
Graham Clarke	Mariken Holter	John Mesher	Antony Scott	Roberta Zizza	
Robert Collins	Professor Peter Howells	Richard Morawetz	Lucy Seifert		
Dr Michael Collop	Ruth Hradsky	Miriam Mukasa	Dennis Sellwood	LSE Centennial Fund (USA)	
Christopher Cooper	Paul Hulme	Katherine Nairne	Probir Sen	Professor Malcolm	
John Cragg	Mokbul Hussain	Nicholas Nedzynski	Rahul Seth	Barnett	
Abby Cronin	Tanveer Hussain	Sandra Newton	Dr Bindi Shah	Gorham Blaine	
Anthony Dacre	John Hutchison	Rosalind Niblett	Elizabeth Shields	John Boland	
Stephanie D'Orey	Dr Janet Imhah Collett	Chukwuemeka Osuagwu	Graham Shore	Winthrop Brown	
Lawrence Douglas	John Insley	Dylan Owens	Mark Shutt	Thomas Burkemper	
Dr George Drower	Dr Danuta Jachniak	Deborah Pacquette	Michael Smart	Mark Clark	
Pamela Dub	Kenneth Jackson	Professor Gigliola Pagano	Aubrey Smith	Stephen Cuddy	
Pamela Durrant	Peter Jackson	de Divitiis	Iain Smith	Felicia De Sanctis	
Julian Eales	Philip Jackson	Robert Park	James Smith	James Dierking	
Tobias Eckersley MBE	Nicholas Johnson	Satya Patel	Andrea Staltmeier		



Remember **LSE**

What will your legacy be?



'LSE was an exciting place to be a Law student – being surrounded by so many ambitious and talented people compelled me to aim high.'

One of LSE's great assets is its international focus – my experiences at LSE pushed me to think globally, launching me into a career in financial services which has taken me all over the world.

I am leaving a legacy to LSE because it changed me and opened up so many possibilities. I hope that my support will do the same for students in the future.'

Peter Randall
LLB 1983

Some remember the jostling of Houghton Street, discussions until late at night in the Three Tuns, that 'eureka' moment during class, late nights in the library and that lecturer who turned the world on its head. Some recall the paternoster in Clare Market and mixed grills in Wrights and demonstrations. LSE has made a lasting impression on many of us. A growing community of alumni and friends of the School are choosing to mark these memories with a gift to LSE in their will.



The impact of a legacy gift is long lasting. From the well-used rooms in the Library and New Academic Building, to the doors opened by scholarships and research funding, gifts of all sizes play a fundamental role in the future of the School. LSE was founded in 1895 with a £20,000 bequest made to the Fabian Society by Henry Hunt Hutchinson. As the School has grown in size and number, so too has the list of alumni, staff and friends who have added to this founding legacy.

What will our world look like 100 years from now? How will LSE's future students and staff teach and learn about our changing global society? We cannot say, but we know there will be important work to do. Your support will ensure that they will continue to investigate it, understand it, and change it for the better.

Remember LSE?

Has LSE left a lasting impression on your life? Is there one class you will never forget, or someone you would like to see again? If you would like to share your LSE stories, come and visit Houghton Street to see how it has changed, and find out more about playing a part in the School's future, please contact the School's legacy officer, Viet Anh To:

**Office of Development and Alumni Relations,
The London School of Economics
and Political Science,
Houghton Street
London WC2A 2AE**

**Tel: +44 (0)20 7852 3654
Email: v.a.to@lse.ac.uk**