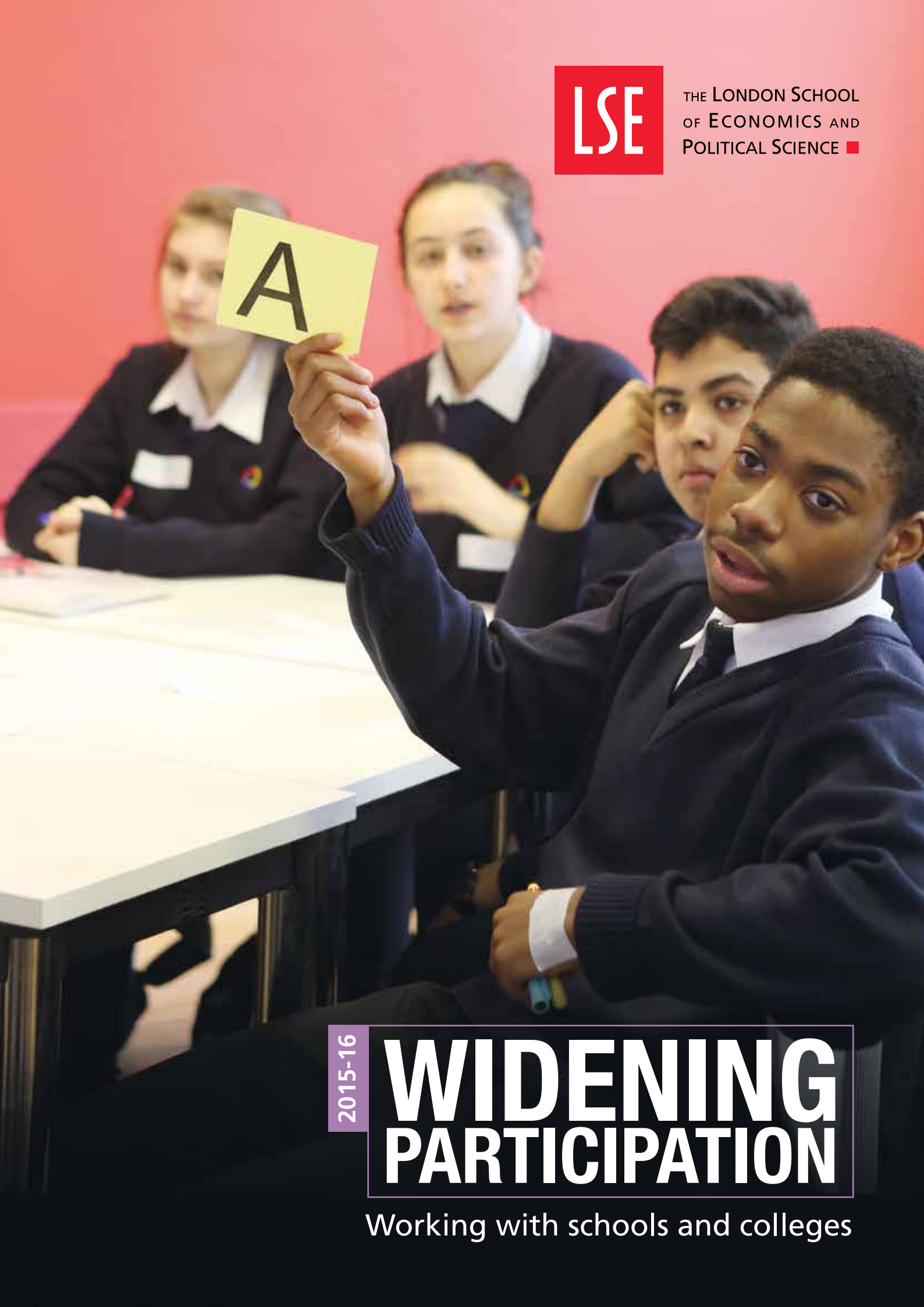




THE LONDON SCHOOL
OF ECONOMICS AND
POLITICAL SCIENCE ■



2015-16

WIDENING PARTICIPATION

Working with schools and colleges

CONTENTS

About LSE	1
Activities at a Glance	2
Widening Participation at LSE	3
LSE Access Agreement and Financial Support	4
Disabled Students	5
Looked After Children	5
Moving on	6
LSE Tutoring	7
LSE Student Mentoring	9
Promoting Potential	10
Introduction to Social Sciences	11
ACE and ACE High Days	12
The Black Achievement Conference	13
Summer School	14
Pathways to Law	16
LSE Choice	18
Alison Wetherfield Law Programme	19
Politics Conference	20
Management Taster Day	21
Taster Courses	22
Student Shadowing	24
Visits and Tours (Years 11-13)	25
Visits and Tours (Years 12-13)	27
Email an Alum	28
LSE Open Days	28
Public Lectures	29
Advising The Advisers	30
Student Ambassadors	31
Additional Support And Other Activities	32
Contact Details	34
How to find LSE	36

Keep in touch



Come to an open day
or join a campus tour:
lse.ac.uk/openDays



Visit our Virtual Open Day
lse.ac.uk/virtualOpenDay



Why not email an alum:
lse.ac.uk/emailAnAlum



Read our blog:
lse.ac.uk/studentBlogs



Like us on Facebook:
facebook.com/lseps



Keep up to date
with us on Twitter:
[@studyLSE](https://twitter.com/studyLSE)



Contact us:
lse.ac.uk/studyContactUs

lse.ac.uk/wideningparticipation

ABOUT LSE

Founded in 1895 by Beatrice and Sidney Webb, Graham Wallace and George Bernard Shaw, LSE is one of the 18 self-governing colleges of the University of London. It is the only university in the UK which specialises in the social sciences. LSE is consistently one of the UK's highest ranked universities and also has an excellent reputation globally. 16 Nobel Prize winners and 34 past or present world leaders have been LSE staff or alumni.

At LSE a wide range of undergraduate and postgraduate courses in social sciences are taught across 24 academic departments, institutes and centres. The School has a cosmopolitan student body, with around 9,500 full-time students from 150 countries. Students regularly cite the international mix as one of the major benefits of studying at LSE, together with the opportunity to study alongside many of the leading academics working in their particular subject area.

LSE has always recruited the best students, irrespective of socioeconomic background. LSE admissions tutors are looking for students who have the academic ability to succeed on our programmes, but also those students who are clearly passionate about their subject and who will make a significant contribution to the life of the School.

Details of the application process, including entry criteria and guidance on completing the UCAS form, are available online.



Information on all our undergraduate programmes can be found in the 2016 undergraduate prospectus at lse.ac.uk/undergraduate/

ACTIVITIES AT A GLANCE

	PAGE	YEAR 6	YEAR 7	YEAR 8	YEAR 9	YEAR 10	YEAR 11	YEAR 12	YEAR 13	ADULT LEARNERS	TEACHERS/ ADVISERS
Moving On	8	✓	✓								
LSE Tutoring	9	✓	✓	✓	✓	✓	✓	✓			
LSE Student Mentoring	10		✓	✓	✓	✓	✓	✓			
Introduction to Social Sciences	13			✓	✓	✓	✓	✓			
Promoting Potential	14			✓	✓						
The Black Achievement Conference	15					✓	✓	✓			
ACE Days	16				✓	✓					
ACE High Days	16					✓	✓				
Year 11 Summer School	17						✓				
Pathways to Law (London)	19							✓	✓		
Year 12 Politics Conference	20							✓			
Taster Courses	20							✓			
Alison Wetherfield Law Programme	22							✓			
Management Taster Day	23							✓			
LSE CHOICE	25							✓	✓		
Student Shadowing	27							✓	✓		
Visits and Tours	28							✓	✓	✓	
Email an Alum	28	✓	✓	✓	✓	✓	✓	✓	✓	✓	✓
LSE Open Days	30	✓	✓	✓	✓	✓	✓	✓	✓	✓	✓
LSE Public Lectures	31	✓	✓	✓	✓	✓	✓	✓	✓	✓	✓
Advising the Advisers	33										✓

Activities shaded in purple are open to students and teachers from all state schools in the UK

TERM DATES

Michaelmas Term

24 September – 11 December 2015

Lent Term

11 January – 24 March 2016

Summer Term

25 April – 10 July 2016

Please see relevant programme pages for further details including 2015/16 delivery dates.

WIDENING PARTICIPATION AT LSE

During 2015-16 we will work to invite past participants to future activities at LSE, so that they can experience a sustained programme of university-related activities and events across their school years. This will help to develop stronger links with pupils and target schools/colleges.

LSE has formally been delivering widening participation (WP) and access initiatives since 1998, with some specific activities pre-dating this. As defined by the Office for Fair Access (OFFA), the purpose of this work "...involves removing the barriers to higher education that students from lower income and under-represented backgrounds face". We aim to support the removal of these barriers given the direct links between under-representation in HE and broader issues of equity and social inclusion.

LSE works to ensure equal opportunities in higher education for all students. Our WP pre-entry outreach programmes are a key part of this. We aim to support London students, who meet widening participation criteria, discover more about the opportunities available to them. Working through the Capital's state schools, colleges and sixth forms to raise aspirations, awareness and attainment, we encourage students to consider how they can fulfil their potential and reach their goals. For detailed information regarding our targeting and selection criteria please refer to the relevant programme pages at: [lse.ac.uk/widening participation](http://lse.ac.uk/widening-participation)

Our approach is tailored to ensure it is appropriate for the age group we are working with. For pre-16 students, we aim to instil a love for further learning and begin to raise awareness of the benefits of continuing in education. We also work to

break down the myths and misconceptions about university, its associated costs and the application process.

Post-16 programmes are designed to academically stretch students in their chosen subject as well as provide them with the knowledge and skills to apply to LSE and other competitive Russell Group Universities.

The **health and safety** of participants is of utmost importance to us. All our widening participation activities are led by staff and supported by LSE student ambassadors, mentors and/or tutors. Child protection is an important part of the training programme undertaken by LSE staff and students who will be working with children and young people. All WP staff, and relevant LSE student ambassadors, mentors and tutors undergo a Disclosure and Barring Service (DBS) check at the appropriate level. All activities run on the LSE Campus are subject to a risk assessment. We are happy to provide school and college staff with copies of risk assessments for individual activities on request.

This brochure outlines the WP programmes LSE will be running in the 2015-16 academic year. Contact details are shown by Project should you wish to find out more about a particular initiative.

We hope that you and your students will be able to join us on one or more

of our WP Schemes this year. The LSE WP Team aims to make all our activities fully accessible. Please let us know of any access or additional requirements so that we can discuss our facilities and how we can best meet participants' needs should you wish to book onto an activity.

Thank you in advance for supporting LSE's widening participation work this academic year.

Funding

All activities are free for schools and colleges to take part in. Activities listed in this brochure are fully funded by LSE and through the generous support of private donors:

Alison Wetherfield Foundation

Maubrey Ltd

Peter Oppenheimer
(BSc Geography, 1985)

Robert Hodges
(BSc International History, 1990)

Rothschild

**The Legal
Education Foundation**

The Sutton Trust

LSE ACCESS AGREEMENT AND FINANCIAL SUPPORT

LSE is committed to ensuring that students from all social and economic backgrounds continue to apply to the School and that no-one is deterred from doing so because of financial considerations.

Since the introduction of variable fees in 2006, around one third of LSE's additional fee income has been reinvested in widening participation and student bursaries.

Our latest Access Agreement builds on past success and commits half of our additional fee income to undergraduate bursaries, outreach and on-course support.

As part of this Agreement, LSE offers a generous package of bursaries and scholarships to undergraduate students, which do not have to be repaid.

1 LSE Bursaries are available for all students who are in receipt of a full or partial maintenance grant. For new students starting in 2015, the maximum bursary available is £4,000 per year for students from the lowest income backgrounds. The Bursary value tapers to £750 for those students on a partial grant.

2 A range of scholarships and awards funded by external donors and foundations, are available for undergraduates each year.

3 On-course financial help is available in the form of the LSE Student Support Fund.

Details of the LSE Bursary scheme and other student support measures can be found on the LSE website at lse.ac.uk/financialsupportoffice

To read our latest Access Agreement please visit www.offa.org.uk/access-agreements

Scholarships are selected on the basis of need. Donors are generally interested in students who are the first in their family to attend university, and those who have shown their interest in study by attending one of our Widening Participation programmes while at School.



DISABLED STUDENTS

LSE is committed to promoting equality and diversity. If you are a disabled person and need assistance to take part in any of our activities or if you have disabled students or staff, please let us know when booking in order to discuss your requirements.

The core aspects of LSE's Policy on Disability are:

- Maximising accessibility to the School's services and activities for disabled staff, students, alumni, visitors, and prospective students, and ensuring that no-one is treated less favourably on the grounds of disability.
- Developing a culture of inclusion and diversity in which people feel free

to disclose an impairment, should they wish to do so, and to discuss reasonable adjustments in order to promote equal participation in the School's services and activities.

- Creating, maintaining and disseminating information about services and facilities available for disabled staff, students, alumni, visitors and prospective students.

LSE Widening Participation works closely with DEAF (Deaf Education Advocacy Fellowship) to support higher education roadshows in the D/deaf community.

In 2015/16 we will be hosting a D/deaf learner event providing students with advice, guidance and a taster of higher education.

lse.ac.uk/disabilityoffice

LOOKED AFTER CHILDREN

Nationally, the proportion of care leavers progressing into higher education is much lower than the general population. The barriers faced by Looked After Children can be very different to those faced by other groups.

LSE is aware of the need to support both Looked After Children and care leavers realise their potential.

The Widening Participation Team works hard to ensure that looked after children are able to benefit from our activities and guidance.

The team is an active member of AccessHE Looked After Children Forum

which works to ensure that partner universities have provision in place to support Looked After Children.

Local authority Looked After Children teams are encouraged to contact LSE if they have a particular group of students that they think would benefit from participation in our programmes.

The special circumstances of Looked After Children are always considered when assessing applications for all LSE widening participation programmes.

Contact

Widening Participation Team
widening.participation@lse.ac.uk
020 7852 3662

MOVING ON

YEARS 6-7

Moving On aims to make a valuable contribution to Year 6 and 7 pupils' transition to secondary education, by showing them that change happens throughout life and can be a positive experience.

This is often the first taste of university for pupils and so the programme is also designed to help raise aspirations.

The three hour interactive programme is led by Widening Participation staff with LSE students facilitating group work and acting as positive role models. Moving On culminates with a class graduation ceremony. Over 400 students benefited from this programme in 2014-15.

The main components of the programme are:

The life ladder: Looking at changes which take place throughout a lifetime.

Agony Aunt: Addressing concerns about secondary school while highlighting all there is to look forward to.

Career Tree: Thinking about the steps needed to help students realise their ambitions.

A campus tour: A guided campus trail completing questions along the way.

Planning a day out: Becoming more independent by planning a hypothetical trip around London.

Graduation: Opportunity to look at a graduation outfit and graduate from Moving On.

LSE can accommodate up to 30 pupils per session.

For detailed information about our targeting and selection criteria please visit lse.ac.uk/movingon

DATES

From November – April.
Specific dates are available online.

Contact

Sophia Mousoulides
widening.participation@lse.ac.uk
020 7852 7003

“

Wow! What an inspirational and thought provoking day! I was amazed to see children who often struggle to formulate and share ideas, having high level discussions and engaging in activities. Moving On really inspires children to understand the higher educational options available to them and to question pre-conceived ideas about university.

Deborah Hogan, Thomas Buxton Primary School



LSE TUTORING

YEARS 6-12

LSE Tutoring has been running since 1988 and in 2014-15 94 LSE students volunteered in 11 schools across nine London boroughs.

Student tutors work in schools, under the supervision of teachers, helping pupils with their academic work. The programme has a number of important aims:

- To help raise pupils' achievement and increase the amount of contact time they have with an adult.
- To raise pupils' aspirations and to encourage them to consider higher education when they leave school.
- To give university students the opportunity to develop their social, organisational and problem solving skills.

- To enable university students to gain important work experience, and to take part in a valuable community programme.

Student Tutors work with pupils in Years 6-12 normally spending one hour per week at a school or college in the Spring Term, on a convenient afternoon.

Tutors work in small groups or on a one to one basis, assisting selected pupils with their studies.

Last year, LSE students who participated in the scheme were studying a variety of both undergraduate and postgraduate courses.

Recruitment will take place in October 2015 and the programme runs in schools from January to March.

For detailed information about our targeting and selection criteria please visit lse.ac.uk/studenttutoring

Contact

Sophia Mousoulides

widening.participation@lse.ac.uk

020 7852 7003

“



I started tutoring for a number of reasons: I wanted to gain experience of teaching as a future career, and I wanted to share the advantages that I have had in my life to give a boost to other students, to help them aim for LSE and other top universities. Taking part in the programme as a tutor has given me a real confidence boost in my ability to teach. I have definitely gained new skills, and most importantly by the end of the programme I had a real sense of satisfaction, I know that my tutees had really improved in their skills and also their self belief – I hope that they now go on to the great things I know they are capable of.

Megan Beddoe, Year 2, BA History,
Tutor at Quintin Kynaston, 2014-15

“

I have seen at first-hand the transformation mentoring can make. LSE mentors are dynamic role models who make a positive impression on young people.

Maria Fearon, Mentor Co-ordinator at Southfields Academy

“

Mentoring gave me confidence and pushed me to do better in school.

Mentee attending Crest Academies Sixth Form

“

I enjoyed expressing my feelings and learning from others in the group

Mentee attending Southfields Academy

LSE MENTORING

YEARS 7-12

LSE Mentoring seeks to raise aspirations, improve attainment and help pupils to become more confident, focused, organised and motivated at school or college, and in the communities in which they live.

The scheme can be of considerable benefit to the pupils involved as well as to their schools and colleges.

It aims to help mentees:

- Improve their performance in key stage assessments and at GCSE and A Level
- Raise their awareness of Higher Education opportunities
- Acquire and develop study skills in order to improve their application to their studies
- Develop greater self-esteem, motivation, confidence and communication skills.

Current LSE students are matched with pupils in schools across London. Potential mentors are put through a rigorous selection process, after which they attend training events which effectively prepare them for their role. All mentors are required to undergo an Enhanced Disclosure and Barring Service (DBS) check before they begin visiting mentees.

Mentors visit pupils in their schools each week to discuss the progress of

their studies and identify any areas in which pupils can improve, working through a series of structured objectives. Mentoring takes place in either group or one-to-one sessions.

The programme runs in schools over ten weeks from January to March.

For detailed information about our targeting and selection criteria please see lse.ac.uk/wpmentoring

“

It was useful to gain new learning and studying techniques

Mentee attending Hampstead School



Contact

Widening Participation Team
widening.participation@lse.ac.uk
020 7955 7645



PROMOTING POTENTIAL

YEAR 8-9

This programme provides the opportunity for boys from African-Caribbean backgrounds to learn about student life and the range of subjects available to them at university.

LSE's Promoting Potential programme aims to stimulate interest in the social sciences as well as encourage excitement and debate, support formal and informal learning and reach new audiences less engaged with higher education.

The course is non-residential, runs from 10am to 3.30pm each day and there is no cost to attend. Lunch is available free of charge each day, all course materials are provided and travel costs are refunded at the end of the week.

Participants have the opportunity to learn from LSE academics, meet current students and gain an insight into studying at university.

The programme consists of the following:

- Interactive social sciences workshops and taster sessions
- Opportunities to interact with LSE's African-Caribbean undergraduates
- Personal branding and motivational workshops
- An off-site workplace visit.

For detailed information about our targeting and selection criteria please see lse.ac.uk/PromotingPotentialYear8

DATES

4-6 April 2016

Top Up days in August
and November 2016

Contact

Rosie Tattersall

widening.participation@lse.ac.uk

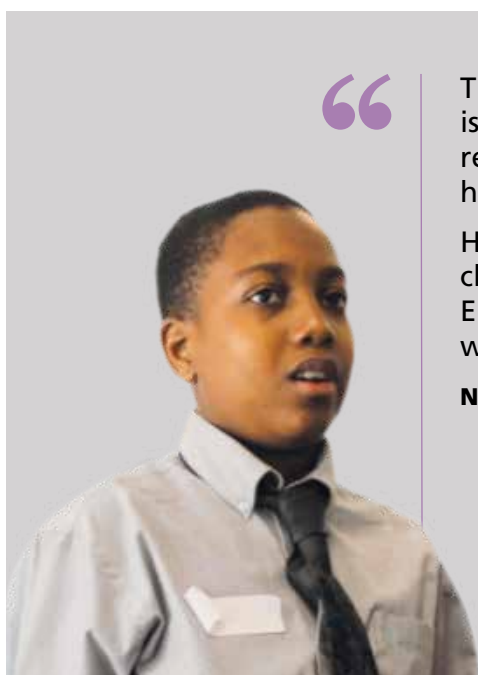
020 7852 3662

“

The benefits have been endless and El-Hajj's confidence is now sky high. Since 'graduating from LSE', he regularly researches college and university courses and has identified where he wants to continue his studies.

He is now enrolled with an IntoUniversity homework club to enhance his learning. Most importantly, El-Hajj has a sense of pride, having experienced this wonderful opportunity.

Nia Bellot, parent of **El-Hajj James**, Year 8, Promoting Potential participant



INTRODUCTION TO SOCIAL SCIENCES

YEAR 8-12

This one day event aims to introduce the content and language of the social sciences to Year 8-12 pupils who wish to learn about the subject areas.

Staff and students from LSE work with pupils to explore the social sciences, and their relevance to the big questions of the day.

Subjects are introduced through 45 minute formal lectures by LSE academics. Topics are then discussed in small groups supported by LSE students. Previous topics have included the Happiness of Economics, and London, a History. The day also includes student led Q and A sessions and a tour of the LSE campus.

Introduction to the Social Sciences is delivered on various dates throughout the year. LSE can accommodate up to 50 pupils per session (25 pupils from two schools).

For detailed information for our targeting and selection criteria please see lse.ac.uk/introsocsci

“

The tour was informative and I learnt a lot about social sciences. The ambassadors were great

Sheikh Abdul Halim,
Eastbury Comprehensive

DATES

January – June 2016

Specific dates are available online.

Contact

Widening Participation Team
widening.participation@lse.ac.uk
020 7107 5250



ACE AND ACE HIGH DAYS

YEARS 9-11

ACE and ACE High days give pupils the opportunity to spend time on campus exploring higher education and finding out about student life.

ACE days

Schools are invited to send a group of pupils to spend half a day at LSE following a specially designed programme of activities. Our Aiming for a College Education (ACE) days encourage Year 9 and 10 pupils to start thinking about the possibility of going to university. The activity based sessions give pupils an insight into university life, the opportunities available to them in higher education, and the options attending university can open up to them.

A typical session looks at:

- perceptions of university
- student life: studying, the Students' Union, accommodation, independence
- a student's perspective: Q and A session with current LSE students.

During these interactive sessions pupils work in small groups led by LSE students. As part of the day they are also taken on a tour of the LSE campus. Each ACE session lasts half a day and schools can request a morning (typically 10am – 12noon) or an afternoon (typically 2-4pm) session.

ACE High days

ACE High days are for Year 10 and 11 pupils who have already had a basic introduction to university and are ready to explore higher education in more detail. These interactive sessions are a fun and enjoyable way for Year 10 and 11 pupils to explore various aspects of student life.

A typical session looks at:

- The financial responsibilities of being a student
- Progression routes into higher education

- Deciding what to study at university

Pupils work in small groups led by LSE students. As part of the day they are also taken on a tour of LSE's campus. Each ACE High session lasts half a day and schools can request either a morning (typically 10am – 12noon) or an afternoon (typically 2-4pm) session.

For detailed information about our targeting and selection criteria please see:

lse.ac.uk/acedays

lse.ac.uk/acehighdays

LSE can accommodate up to 30 pupils per ACE and ACE High session.

DATES

December – January
and **April – June.**

Specific dates are available online.

Contact

Widening Participation Team
widening.participation@lse.ac.uk
020 7955 7645



THE BLACK ACHIEVEMENT CONFERENCE

YEARS 10-12

As part of the UK's Black History Month, LSE hosts a conference for African-Caribbean heritage students and their families. The Black Achievement Conference aims to encourage young African-Caribbean students in years 10, 11 and 12 to continue to aim high, celebrate past achievements and involve parents in the education decision making process.

This inspiring and motivational day includes a line-up of speakers from London's African Caribbean community. The conference is designed to help students and their families plan for their future by providing a taste of higher education.

The event will inspire students to aim higher, think bigger, realise their

potential and make informed choices about what to do with their futures through activities such as:

- Motivational seminars
- Parent workshops with practical tips on supporting their child's education
- Student life workshops led by LSE's African Caribbean Society

For detailed information about our targeting and selection criteria please see lse.ac.uk/blackachievementconference

“

It was such a great event. My son found it inspirational and said it has changed his perspective and attitude towards life.

Parent of conference attendee

DATE

Saturday 17 October 2015

For information about 2016 dates please see the website

Contact

Widening Participation Team

widening.participation@lse.ac.uk

020 7955 7645



SUMMER SCHOOL

YEAR 11

Running since 2000, the Year 11 Summer School offers 120 pupils the opportunity to spend a week at LSE in the summer after completing their GCSEs. Pupils are given the chance to experience university life first hand and have a taste of subjects available to them at university.

Participants have the opportunity to meet LSE academic staff and students and gain a taste of a range of different subjects and how they are taught at university. They study alongside pupils from different schools across London, giving them the chance to make new friends and exchange ideas.

Previous summer schools have included workshops in economics, history, law, sociology and politics and have looked at topics including modern day slavery, the link between wealth and happiness, and culture and identity.

The programme is non-residential, and is available at no cost to participants. Lunch is available free of charge each day, all course materials are provided and travel costs are refunded at the end of the week.

For detailed information about our targeting and selection criteria please see lse.ac.uk/Year11SummerSchools

DATE

4-8 July 2016

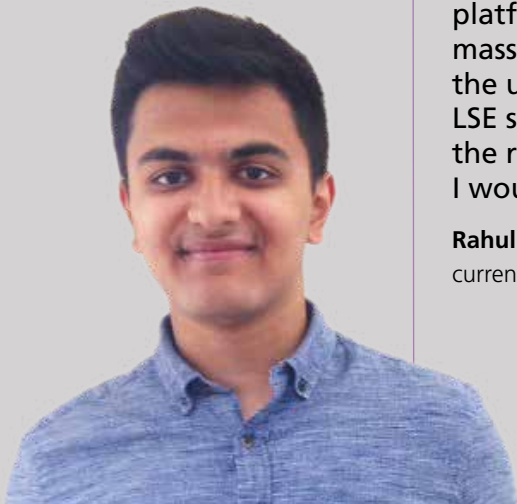
Contact

Rosie Tattersall

widening.participation@lse.ac.uk

020 7852 3662

“



The Summer School was my first insight into university and I knew straight away that both LSE, and Economics, were where I wanted to aspire to be. In addition to being a great platform towards university, the year 11 summer School massively boosted my university application and gave me the unique opportunity to meet and network with current LSE students. The year 11 Summer School was undoubtedly the reason I chose LSE as my first choice university and I would highly recommend it!

Rahul Shah completed the LSE Year 11 Summer School in 2012 and is currently studying BSc Economics at LSE.



PATHWAYS TO LAW (LONDON)

YEARS 12-13

Pathways to Law, run collaboratively by LSE and the Sutton Trust and supported by the Legal Education Foundation, is a two-year programme which supports academically-able students in years 12 and 13 from non-privileged backgrounds who are interested in a career in law.

Students join the programme at the start of Year 12 and throughout the two years they will be invited to attend a regular and varied programme of lectures, seminars, careers events, mock trials and university guidance sessions. All students will be assigned an undergraduate law mentor and will have the opportunity to take part in a law work experience placement.

Law taster sessions

These are a combination of lectures and law related activities. Delivered by LSE academics, the law sessions cover different areas such as criminal law, human rights law and EU law. Law related activities include off-site visits to barristers' chambers, Inns of Court and the opportunity to "shadow" a university law student and attend one of their lectures.

Residential conference

Pathways to Law is a national programme, and Pathways students from across the country have the opportunity to attend a residential conference at the University of Warwick. The conference provides students with an experience of university life, allowing them to meet students from other Pathways groups.

Work experience

Pathways students will undertake work experience at one of London's leading law firms during half term, Easter and Summer holidays in Year 12. In previous years, work experience has been undertaken at firms including Linklaters, DLA Piper, Eversheds and Allen & Overy.

E-mentoring

All students on the Pathways programme are offered an undergraduate Law mentor for the duration of the programme. Using the Brightside Trust's e-mentoring platform, students receive regular news feeds from the legal world, gain access to bespoke guidance and maintain regular contact with their mentor.

For detailed information about our targeting and selection criteria please see lse.ac.uk/pathwaystolaw

Contact

Rosie Tattersall
pathways@lse.ac.uk
020 7852 3662

“

Pathways to Law gave me the opportunity to begin developing a network of contacts in the profession right from the start. My work experience placements allowed me to meet professionals from a range of different areas of law and provided a fascinating insight into what life in a law firm would be like. The Pathways to Law National Conference was a memorable opportunity to meet new like-minded individuals and gain a true insight into university life. From helping me to develop analytical, debating and negotiation skills, the benefits were immeasurable. Meeting LSE lecturers at the academic sessions made me realise that applying to study law at the School was the right choice for me. I now have a place to study Law at LSE and I can't wait to begin the course. Pathways to Law has been the crucial turning point for my future and I am glad to have had the opportunity to have been a part of it.

Zahrah Mohammad graduated from Pathways to Law (cohort 6, 2012 – 2014) and is currently studying LLB in Laws at LSE.



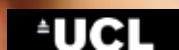
“

The programme gave me the justification I needed to choose a career in Law; this was helped by the work experience and job shadowing opportunities. I also enjoyed the seminars and lectures we had on different aspects of Law, this in turn stemmed my interest in what I wanted to cover in my own degree.

Pathways to Law cohort 6 graduate



In partnership with:



LSE CHOICE

YEARS 12-13

LSE CHOICE identifies talented young people from London state schools and colleges and gives them the tools they need to successfully apply to LSE and other competitive Russell Group universities.

LSE CHOICE stands for:

LSE Challenge

LSE Higher

LSE Opportunity

LSE Investment

LSE Commitment

LSE Excellence

Each year, the LSE CHOICE programme works with 180 students from non-traditional backgrounds. Students apply for a place on one of five LSE CHOICE subject streams:

- Economics
- Government and Politics
- History
- Mathematics
- Sociology.

The programme

The programme is based at LSE and will run from August 2015 through to March 2016.

There are two main elements to the programme – a week-long summer school followed by 16 two-hour Saturday sessions.

Summer School

The Summer School offers students the opportunity to spend one week studying a subject in which they are interested, together with sessions designed to develop key skills and critical thinking. It is delivered after the AS level results have been published and includes subject consolidation as well as preparation for A2 level study together with university information sessions based on real experiences and expectations, covering topics such as UCAS applications and personal statements. These university information sessions will be delivered by LSE staff from the Student Recruitment and Admissions teams.

The non-residential Summer School lasts for five days at the end of August and is delivered by current LSE academic staff and research students, external speakers and experienced subject teachers.

Saturday sessions

The two-hour Saturday sessions run on 16 Saturday mornings during the school and college autumn and spring terms of Year 13. Each Saturday session focuses on an important area of the subject, intended to encourage students to think about their subject more broadly.

There will be an additional optional session which comprises a visit to the University of London open day in September 2015. Students are also expected to attend LSE public lectures.

Participation in the programme is free of charge and lunch is provided each day of the Summer School. Students are given an attendance allowance of £20 for each Saturday session, which includes a contribution towards transport costs.

For detailed information on our targeting and selection criteria please see lse.ac.uk/lsechoice

**Applications open
January – 25 March 2016**

DATES

Summer School:
15-19 August 2016

Saturday sessions
2016:
**17, 24 September
1, 8, 15 October
5, 12, 19, 26 November
3 December**

2017:
**21, 28 January
4, 11, 25 February
4 March**

Deadline for applications:
25 March 2016



I got to meet like-minded people and engage with a subject at a different level from what I was used to at college.

LSE CHOICE, Sociology student

Contact

Widening Participation Team
widening.participation@lse.ac.uk
Tel: 020 7107 5257

ALISON WETHERFIELD LAW PROGRAMME

YEAR 12

The Alison Wetherfield Law Programme comprises a series of law master classes, a one day conference and a mentoring service for pupils in Year 12.

The Alison Wetherfield Law Programme aims to provide young people with an interest in law the opportunity to improve their education and career development.

The programme consists of:

- A series of master classes led by LSE academics which explore current legal themes and issues.
- Academic workshops focussing on study, research, presentation and critical thinking skills.
- A one day conference including a lecture and interactive seminars as well as a hands-on legal exercise.
- Mentoring service to allow pupils to obtain academic advice and guidance from current undergraduate law students.

For detailed information about our targeting and selection criteria please visit: lse.ac.uk/alisonwetherfieldlaw

“

The Alison Wetherfield Programme opened my eyes to the type of life a university student lives. It has also made me more confident in choosing law as the subject I would like to read in university.

Alison Wetherfield Programme participant

Contact

Katya Ivanova
ard.awlaw@lse.ac.uk
Tel: 020 7955 4907



POLITICS CONFERENCE

YEAR 12

This annual conference gives Year 12 students a taste of what it is like to study politics-related degrees at university.

The conference is run in partnership with the Department of Government and the Department of International Relations at LSE. A programme of lectures and seminars is led by senior academics and research students, taking a different contemporary subject each year as its theme. Previous conference themes have included:

- The New Face of War and Conflict in the 21st Century
- What Way Forward for Britain in Europe?
- The Ethics of War and Globalisation
- Riots, Rebellions and Revolutions: the Politics of Popular Mobilisation Today
- The British People Have Decided: Understanding Citizens' Voting Behaviour in the 2015 General Election

The academic content of the day is complemented by a campus tour and interactive student panel, giving attendees the opportunity to talk with current LSE students about their experiences at university.

For detailed information about our targeting and selection criteria please see lse.ac.uk/year12politicsconference

“

I enjoyed the fact that I was able to find out more about what being a politics student is like – giving more confidence in choosing it as a degree.

Year 12 Politics Conference attendee, 2015

The atmosphere was very lively and the debates were really interesting.

Year 12 Politics Conference attendee, 2015

DATE

23 June 2016

Contact

Widening Participation Team
widening.participation@lse.ac.uk
Tel: 020 7852 7003



MANAGEMENT TASTER DAY

YEAR 12

This successful event is open to 30 Year 12 pupils studying A Level Mathematics. Management is a broad and rewarding degree programme which encompasses many disciplines, and this event will appeal to students with an interest in management, economics, finance, accounting, marketing and human resources.

The day includes:

- An introduction to LSE and the Management Department
- Specialist admissions advice tailored to those interested in applying to Management
- Two interactive taster seminars where students can gain an insight into some of the topics they would study as a Management student

- A guided tour of the LSE campus

- The opportunity to network with current LSE Management undergraduate students and staff.

This event is free of charge and lunch will be provided for all students attending the Taster Day.

For detailed information about our targeting and selection criteria please see lse.ac.uk/BScManagementTasterDay

DATE

12 July 2016

Contact

Widening Participation Team
widening.participation@lse.ac.uk
Tel: 020 7107 5250



TASTER COURSES

YEAR 12

LSE is one of 25 institutions that take part in the University of London Taster Course Programme.

The Programme provides Year 12 students thinking about attending university the opportunity to experience life as a university student, in the subject area of their choice. Taster courses take place at universities across London.

The LSE taster courses last for one day, and students select one of a range of subject specialisms which will be published on the University of London website nearer the time.

Students who are selected will spend a full day at LSE and will gain an insight into the School, its departments and courses, the application process and student life. Current LSE students will also attend the sessions, introducing their chosen subject.

Available to Year 12 students

Places are limited and applications are handled on our behalf by the University of London's Taster Courses office.

Please do not contact LSE directly to apply for a place.

For more information and to submit an application, please visit london.ac.uk/tasters

Contact

Widening Participation Team

widening.participation@lse.ac.uk

Tel: 020 7955 7003





STUDENT SHADOWING

YEAR 12-13

Student shadowing is available to Year 12 and 13 students from London state schools and colleges who are interested in finding out about life as an LSE student.

The shadowing scheme allows Year 12 and 13 students to make an informed decision about whether or not to apply to LSE.

Students spend up to three hours at LSE, shadowing a current undergraduate. Pupils accompany their host to an undergraduate lecture, tour the campus and see the Students' Union. Pupils also

have the chance to quiz LSE students about their life at university.

Students studying languages have the opportunity to shadow undergraduates who have opted to take a language module as part of their degree.

Visitors with specific questions about admissions or other aspects of studying at LSE can speak to a member of the Student Recruitment team.

In the past three years, over 400 Year 12 and 13 students have taken part in LSE's student shadowing scheme. Feedback from visitors is resoundingly positive.

Applications open online at the end of September.

“

It was great to see what a lecture is really like and how students spend their days at LSE. The student I shadowed was really friendly and helpful.

DATES

November – March,
(at various times between 10am to 5pm, Monday to Friday).

Contact

stu.rec@lse.ac.uk
020 7955 6613



VISITS AND TOURS

YEARS 11-13

The Student Recruitment Office welcomes invitations to attend careers and Higher Education fairs and to arrange campus visits/tours for school groups, prospective students and other visitors.

Careers and Higher Education fairs

The Student Recruitment Office is happy to receive invitations to individual school and college careers/HE fairs.

Available to all schools and colleges subject to staff availability.

Organised visits to LSE

We are happy to receive requests for visits from groups of students from schools and colleges. Visits usually last one hour and can include a tour of the campus, a talk by LSE staff

and current students, and a question and answer session. Book a visit at lse.ac.uk/visitingLSE

Available to all schools and colleges, subject to staff availability.

Campus tours

Campus tours are an opportunity for visitors and prospective students to be guided around the School by those who know it best – the students. Tours of the LSE campus take place on the last Wednesday of the month. Visitors are not required to book; they can simply turn up at

the Student Services Centre at 3pm on their chosen date, where they will be met by Student Ambassadors who will show them around the LSE campus. Once the tour is finished visitors can attend an admissions presentation given by a representative from the Student Recruitment Office. The presentation also incorporates a question and answer session.

Contact

Sarah Mullen

s.mullen@lse.ac.uk

Tel: 020 7955 6298





VISITS AND TOURS

YEARS 12-13

The LSE Student Recruitment Office regularly visits schools and colleges to give talks about a variety of subjects relating to Higher Education.

School and college visits

The Student Recruitment Office will work with schools and colleges in order to provide a bespoke talk which is both relevant and informative.

Popular topics include:

- Thinking about and choosing your university
- UCAS application process
- Student finance and budgeting
- Student life
- Applying to and studying at LSE
- Writing your UCAS personal statement.

Talks can last between 20 minutes and one hour and, where necessary, a staff member could be accompanied by an LSE Student Ambassador. The team can be flexible and are willing to consider any format that you feel would be appropriate for your school/college.

Personal statement workshops

These sessions give students the opportunity to learn from an expert exactly what highly selective universities look for in personal statements. This covers the basics of structure and style as well as more tailored advice regarding content. Workshops can last between 20 minutes and one hour and allow students great insight into the purpose and importance of the personal statement.

Personal statement workshops are available to London state schools performing below the national average or those with a higher than average percentage of pupils eligible for free school meals. All workshops are subject to availability.

Contact

SCHOOL AND COLLEGE VISITS

Sarah Mullen

s.mullen@lse.ac.uk

Tel: 020 7955 6298

PERSONAL STATEMENT WORKSHOPS

Widening Participation Team

widening.participation@lse.ac.uk



EMAIL AN ALUM

OPEN TO ALL

When choosing a university, prospective students often have questions that are not answered in prospectuses or on websites.

The "Email an alum" service allows potential applicants to make contact with recent LSE graduates and ask them questions about their experiences of studying at the School and the impact it has had on their careers since their graduation. Alumni are sorted both by country, to allow students to contact alumni from their part of the world, and by the particular degree they studied.

To use the service visit the Email an alum website or contact the Student Recruitment Office:

lse.ac.uk/emailAnAlum

Contact

Dan Newby

d.newby@lse.ac.uk

Tel: 020 7955 6143

LSE OPEN DAYS

OPEN TO ALL

LSE holds two open days each year for prospective undergraduate students. The open days are an opportunity for students to visit LSE and learn more about the courses on offer as well as student life.

Students can attend talks, tour the School and a hall of residence, chat to current students and meet with academics from the subject areas they are interested in. The programme of talks will include specific subject sessions, general talks on applying to LSE and student life and specific sessions for parents.

Advanced booking for the open days is essential.

For block bookings for a group of ten or more students, please contact Dan Newby.

Available to all Year 12 students.

DATES

Wednesday 6 April

Thursday 7 July

Contact

Dan Newby

d.newby@lse.ac.uk

Tel: 020 7955 6143

PUBLIC LECTURES

OPEN TO ALL

LSE holds a series of public lectures which take place throughout the academic year. Everyone is welcome to attend LSE's public lectures, where some of the most influential figures in the social sciences can be heard.

Most lectures are followed by a lively question and answer session where you can take part in the debate. In previous years, lectures by world leaders such as Bill Clinton, Kofi Annan, Nelson Mandela and Mary Robinson have been part of the lecture programme.

Most events are free and open to all, with entry on a first come, first served basis. However, in some cases entry is by ticket only, and tickets can be booked online in advance.

Podcasts and transcripts of many past lectures and debates are available to download for free at lse.ac.uk/events

If you would like to receive a copy of LSE's termly leaflet which lists upcoming lectures, you can join the mailing list by contacting the Events Office (see below) or visit the website for further details.

Available to all students.

Contact

LSE Events

events@lse.ac.uk

020 7955 6043

Follow LSE events on Twitter at twitter.com/lsepublicevents and on Facebook at Facebook.com/lseps



ZAINAB HAWA BANGURA Special Representative on Sexual Violence in Conflict for the UN



ERIC SCHMIDT executive chairman of Google



JOYCE BANDA President of Malawi 2012-14



LAWRENCE H SUMMERS Leading American economist



FAREED ZAKARIA host of CNN's flagship foreign affairs show Fareed Zakaria GPS



SERGIO MATTARELLA President of the Republic of Italy

ADVISING THE ADVISERS

TEACHERS

A one day conference providing teachers and higher education advisers with information and guidance on how best to support their students through the university admissions process. The conference has a particular emphasis on the admissions policies of the Russell Group of 24 leading UK universities.

During the course of the day advisers have the opportunity to talk to admissions tutors and LSE Student Recruitment staff about LSE's courses and admissions procedures.

The Programme

- Applying to Russell Group universities. How does applying to Russell Group universities differ from other universities? What should students and teachers be aware of?
- Admissions policies and processes. A look at admissions policies and behind-the-scenes procedures.
- The personal statement workshop. What are admissions selectors looking for in a personal statement?
- Teacher's reference workshop. Information and advice on what admissions selectors look for in a teacher's reference.

Available to heads of sixth form and higher education advisers.

LSE also contributes to the biennial Russell Group Teachers' Conferences. These are running in 2016 at the University of Cambridge and the University of Liverpool. Further details about these events will be available on the Russell Group website:

www.russellgroup.ac.uk

“

The Advising the Adviser's conference was a very informative event... it's important to stay abreast of new developments. I appreciated the opportunity to network with other advisers and teachers during the interactive sessions and to meet current students during the campus tours.

Heather Meikle, Personal Adviser, Centre for British Teachers (CfBT)
Advice and Guidance, Harrow

DATE

13 May 2016

Contact

Alice Else

a.else@lse.ac.uk

Tel: 020 7852 3694



STUDENT AMBASSADORS

The Widening Participation Student Ambassador Scheme sees up to 100 LSE undergraduate students help deliver a range of both on and off campus activities, working with young people 10-18 years old.

Student Ambassadors are ideally placed to act as role models and provide guidance to the pupils they work with, having recently made critical decisions relating to Further and Higher Education themselves. Interacting with our Student Ambassadors allows young people to actively engage with the prospect of Higher Education and have their questions about university life answered by someone who is experiencing it first-hand.

Student Ambassadors play a supporting role across the majority of LSE Widening Participation's activities. Most often, Student Ambassadors deliver campus tours to groups, take part in question-and-answer sessions and lead groups of pupils through classroom-based activities. Experienced Student Ambassadors also frequently visit schools and colleges, representing LSE at Higher Education

and careers fairs in order to provide prospective students with information on our application and admissions procedures, as well as answering their questions about student life at LSE.

All LSE Student Ambassadors are required to attend training events which effectively

prepare them for working with young people and cover material including risk management and child protection. Student Ambassadors are also required to undergo an enhanced Disclosure and Barring Service (DBS) check before they carry out any work with LSE Widening Participation.

“

I have been very fortunate to have been heavily involved in the Student Ambassador scheme. It gives me great pleasure to be able to represent the institution that has done so much for me in the hopes of allowing others to see it in the same light. The respect you gain and inspiration you pass on are certainly the most impactful aspects of being an Ambassador.

Bryn Thor Yen Jun, Year 3, BSc Accounting and Finance,
Student Ambassador of the Year



ADDITIONAL SUPPORT AND OTHER ACTIVITIES

It is not just the Widening Participation and the Student Recruitment Offices that support fair access and run activities for schools and colleges at LSE. Others are involved too, some examples are featured here:

LSE Students' Union (SU)

The SU is committed to ensuring that students, regardless of background or socio-economic status, are able to enter both LSE and higher education in general. The SU has a long history of campaigning for wider participation in education and has often played a key role within the national student movement to bring about fairer access for all.

The SU also administers Hardship Funds for students facing financial difficulties during their time at LSE.

Language Centre Years 9 – 13 Access to languages

The LSE Language Centre runs a range of pre-university language programmes designed to link London schools to LSE and encourage a greater uptake of language studies post-14.

Activities include

E-mentoring – LSE students “buddy” online with language students at London secondary schools. This is part of a “Routes into Languages” consortium made up of eight universities in London.

Language days and student shadowing for A level students – groups of secondary school pupils come onto the LSE campus to find out more about studying languages at university and experience student life for a day.

Contact

su.communitywelfare@lse.ac.uk

Tel: 020 7955 7471

Contact

LSE Language Centre

languages@lse.ac.uk

Tel: 020 7955 6713



Literary Festival

LSE runs an annual Literary Festival, now in its seventh year, designed to explore the connections between the arts and social sciences, bringing together award-winning authors and academics in a series of events, free and open to all, taking place over the course of a week in February. Schools are invited to take part in the many activities, talks and lectures taking place throughout the Festival. In particular, we hold children's events for three to ten year-olds on the Saturday of the Festival, and we also host the prize-giving event for a First Story creative writing competition for state schools, key stages 3 – 5, which is open to anyone to attend and takes the form of an interactive discussion about creative writing with young adult authors.

The next LSE Space For Thought Literary Festival will be held from Monday 22 – Saturday 27 February 2016, exploring the theme "Utopias". Full details of the programme will be online in December 2015 at

lse.ac.uk/spaceforthought

British Government open access lecture series

lse.ac.uk/newsAndMedia/videoAndAudio/channels/britishGovernment/Home.aspx

The LSE Government department is making its undergraduate course, "British Government", open to Year 12 and 13 students, teachers and the wider public. Lectures last for one and a half hours and take place at 5pm on a

weekday during the Autumn and Spring terms (day to be confirmed).

The course provides an introduction to contemporary British government, notably the institutions involved and processes of policy-making. The first part of the course explains the evolution of British government from the earliest times, including the philosophical ideas that have come to underpin contemporary politics. The key institutions of British government are described and analysed, focusing on factors that explain the functioning of a complex modern State. By the end of the course, students will have a practical understanding of the entire system of British government and the influences that affect it.

All of the lectures are filmed and made available online afterwards, so if you can't attend the lectures on the LSE campus you can catch up with the presentations and discussions at your leisure. Schools may find these lectures useful to support teaching around A level Government/ Politics and related subjects.

Attendance is first come, first served but please let the department know in advance if you plan to attend with a group of five or more.

Faith Centre

The LSE Faith Centre has worked for a number of years with local schools around the LSE campus. As part of the Centre's Interfaith Week activities in November, students of different faiths visit schools in the community to facilitate interreligious dialogue and demonstrate to young people both the possibility of participation in Higher Education among underrepresented religious groups and the potential for friendships to be formed across faith divides.

Contact

The Revd Dr James Walters
Chaplain and Interfaith Adviser
LSE Faith Centre
The London School of Economics
and Political Science
Houghton Street
London WC2A 2AE
United Kingdom

Tel: +44 (0)20 7955 7965

lse.ac.uk/faithcentre

facebook.com/LSEFaithCentre
blogs.lse.ac.uk/faithcentre

Contact

Martin Rogers

Gov.britgov@lse.ac.uk

Tel: 020 7955 6498

CONTACT DETAILS

Widening Participation Team

Kirsty Wadsley

Head of Widening Participation
Email: k.wadsley@lse.ac.uk
Tel: 020 7852 3642

Alexandra Smith

Widening Participation Co-ordinator
Email: a.smith@lse.ac.uk
Tel: 020 7107 5250

Rosie Tattersall

Widening Participation Officer
Email: r.tattersall@lse.ac.uk
Tel: 020 7852 3662

Joanna Pink

Widening Participation Officer
Email: widening.participation@lse.ac.uk
(currently on maternity leave until April 2016)

Sophia Mousoulides

Widening Participation Co-ordinator
Email: widening.participation@lse.ac.uk
Tel: 020 7955 7003

Rebecca Saxby

Widening Participation Co-ordinator
Email: widening.participation@lse.ac.uk
(maternity cover until April 2016)

Katherine Mitchell

Widening Participation Administrator
Email: widening.participation@lse.ac.uk
Tel: 020 7849 4906

Katya Ivanova

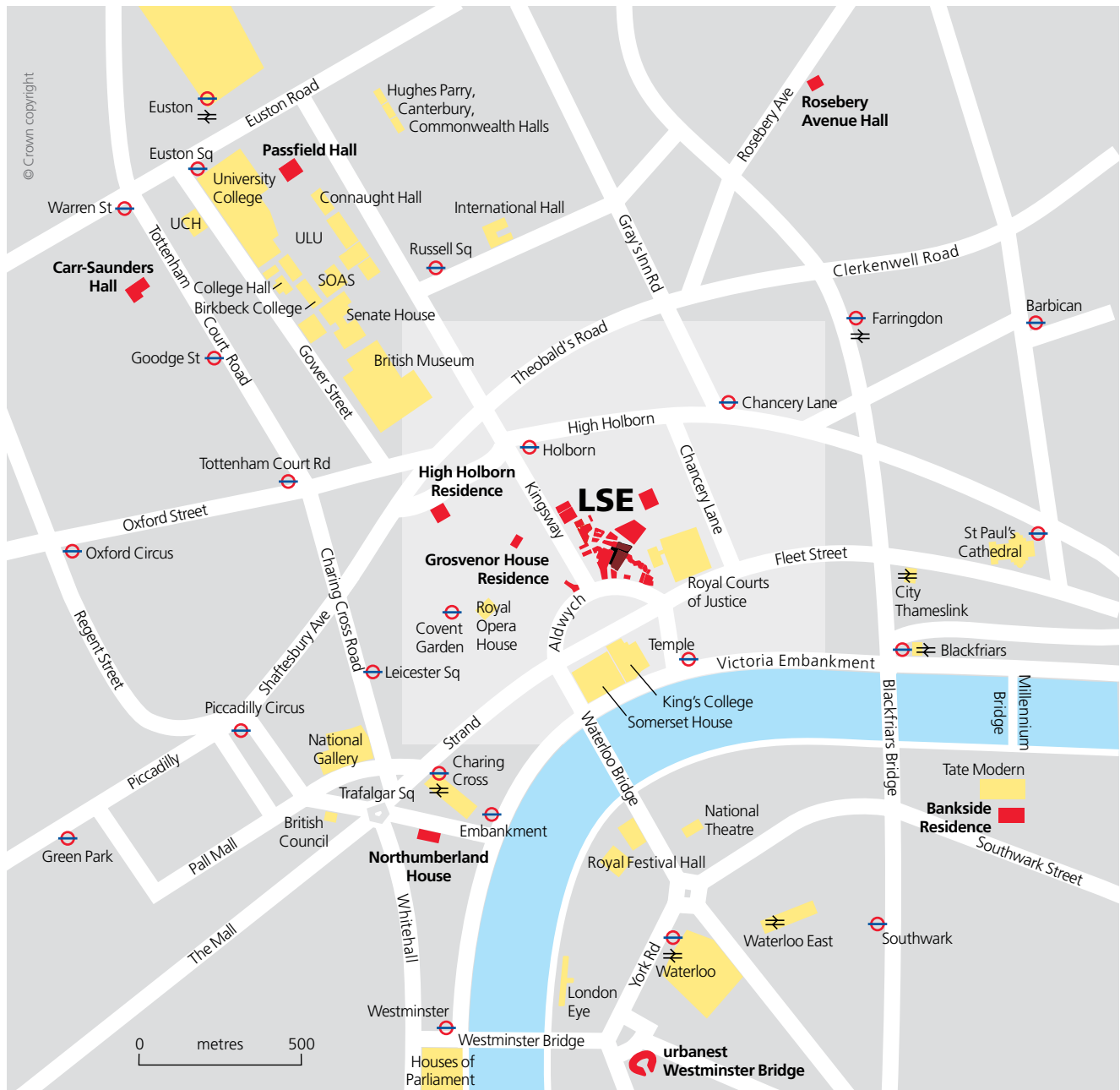
Widening Participation Co-ordinator (law programme)
Email: ard.awlaw@lse.ac.uk
Tel: 020 7955 6613

The London School of Economics and Political Science
Houghton Street
London WC2A 2AE
Email: widening.participation@lse.ac.uk
Tel: 020 7849 4906





HOW TO FIND LSE



The information in this brochure can be made available in alternative formats, on request.

Please contact: 020 7849 4906

Email: widening.participation@lse.ac.uk

The London School of Economics and Political Science is a School of the University of London. It is a charity and is incorporated in England as a company limited by guarantee under the Companies Acts (Reg No 70527).

Freedom of thought and expression is essential to the pursuit, advancement and dissemination of knowledge. LSE seeks to ensure that intellectual freedom and freedom of expression within the law is secured for all our members and those we invite to the School.

Design: LSE Design Unit

Photography: All photos by Nigel Stead, LSE Photographer