



TOUR

Please feel free to explore LSE at your leisure. Whilst we try to maintain an open campus, the safety and security of our students are important considerations. Accordingly, some of our buildings are only open to LSE staff and students. We apologise in advance for any disappointment this might cause.



1 OLD BUILDING

Enter the Old Building through the glass doors and you will see a reception desk to your right.

If you need any help navigating your way around the campus please ask a member of staff. The doors in front of you lead into the Old Theatre. This is one of the School's main lecture theatres and is used for teaching and guest lectures, LSE Drama Society productions and weekly Students' Union meetings.

Take the lift or stairs to the sixth floor. Go through the swing doors and follow the corridor through the Anthropology Department, round to the right and into the Shaw Library/Founders' Room.

2 THE SHAW LIBRARY

A library and common room for the entire LSE community. The library encourages students to widen their interests by reading books on subjects not included in the School curriculum. The Shaw Library holds a generous stock of English language fiction classics through to modern book prize winners, as well as significant collections on poetry, biographies, plays, art, architecture, sport, music and travel guides. The library also stages free lunchtime and evening concerts by leading jazz and classical performers.

Make your way back along the Anthropology corridor and through the swing doors. Take the lift or stairs to the fourth floor. Go through the swing doors into the Fourth Floor Restaurant.

3 FOURTH FLOOR RESTAURANT

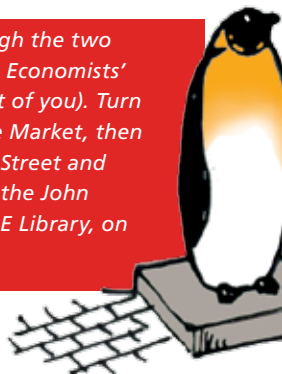
Here students can purchase main meals along with hot and cold snacks at subsidised prices. There is a wide variety of food to suit all tastes and requirements, with a selection from around the world available, reflecting the international nature of the School. Outside is a roof terrace for students to enjoy food and drink al fresco. From here you will have a good view across Houghton Street to the redevelopment of LSE's centre buildings and the creation of a new academic and social space, due for completion in 2018.

Go back to the lift/stairs and return to the ground floor. Turn right at the Old Theatre and continue through the white double doors in front of you.

4 STUDENT SERVICES CENTRE

The centre brings together LSE's student support services, and the staff at the counter will be pleased to answer any basic questions you may have. Drop in sessions for more detailed queries on immigration, fees, financial support and admissions are held at various times during the week. You will also see pictures of the 16 LSE alumni or staff members who have been awarded Nobel prizes.

Leave the building through the two glass doors (Waterstones Economists' Bookshop will be in front of you). Turn left and walk along Clare Market, then turn right onto Portugal Street and continue until you reach the John Watkins Plaza and the LSE Library, on your right.





5 THE BRITISH LIBRARY OF POLITICAL AND ECONOMIC SCIENCE

The LSE Library, founded in 1896 as the British Library of Political and Economic Science, is the largest in the world devoted exclusively to the social sciences. The building is also home to The Women's Library, the oldest and most extensive collection of women's history in Europe, which was relocated to the LSE Library in 2013. The Women's Library collection contains 60,000 printed texts and 5,000 museum objects, including photographs, posters, badges, banners, textiles and ceramics.

On exiting the Library return to Portugal Street, turn right, and walk to 32 Lincoln's Inn Fields, on your left. Walk through the entrance lobby to emerge at the front of the building.

6 32 LINCOLN'S INN FIELDS

The former Land Registry Building opened its doors as 32 Lincoln's Inn Fields in 2013. The building enjoys views over London's largest public square. It offers five floors of academic offices plus three lower floors of teaching and student activity areas, which can cater for up to 1,000 students.

Turn left onto Lincoln's Inn Fields and walk towards Sardinia Street. LSE's New Academic Building is across the road on your right.

7 NEW ACADEMIC BUILDING

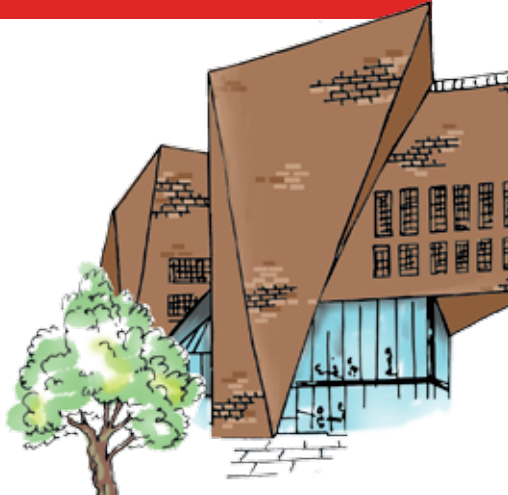
The School's New Academic Building was purchased in 2004. Constructed in 1912, the building has undergone a radical transformation and now provides students with fantastic state-of-the-art facilities. It houses the School's departments of Management and Law. It boasts eight floors of teaching rooms, lecture theatres and offices, built around a soaring central atrium flooded with natural light.

Cross Sardinia Street and walk down Portsmouth Street. On your right you will see the Saw Swee Hock Student Centre, which you are welcome to explore.

8 SAW SWEE HOCK STUDENT CENTRE

Since opening in 2014, the Student Centre has been presented with a host of architecture awards, including the prestigious RIBA London Building of the Year Award 2014. The building is a student hub at the heart of LSE's campus and houses the LSE Students' Union and large venue space. Here, you will find a pub, a fitness centre, a multi faith prayer centre, as well as the LSE Accommodation Office, and the LSE Careers Service. The Student Centre is also home to the LSE Media Centre, which includes LSE's Pulse Radio, its weekly newspaper (The Beaver), its termly journal (The Clare Market Review) and LSE's very own TV station, LooSE TV.

On leaving the Student Centre, turn right and then right again, onto Portugal Street.



9 PEACOCK THEATRE

LSE utilises this 999-seat West End theatre for lectures, public talks, conferences, graduation ceremonies and open days.

Turn around and walk back along Portugal Street, continuing until you reach St Clement's Lane (behind Waterstones bookshop). Walk down St Clement's Lane then turn right onto Grange Court and then left down the steps to Clement's Inn. On your right hand side will be Towers One, Two and Three.

10 THE TOWERS

If you have any queries about applying to or studying at LSE please visit the Student Recruitment Office on the sixth floor of Tower One. The office is open from 9.30am-5pm every weekday. No appointment is necessary. On the wall of Tower Two you will see a plaque marking the location of the headquarters of "The Women's Social and Political Union", also known as "The Suffragettes". Tower Three is home to the St Philips Medical Centre, providing NHS treatment to LSE students.

Continue along Clement's Inn and through the gate at the end, leading out onto the Strand. Turn right and follow the pavement round until you come to Clement House, on your right. Enter Clement House through the second set of doors.

11 CLEMENT HOUSE

Clement House was built in 1911, and acquired by LSE in the mid 1990's. On the ground floor is the Hong Kong Theatre, which is used for both academic and public lectures.

Exit Clement House and turn right on the Aldwych. Walk up to Houghton Street.

12 LSE GARRICK

On the corner of Houghton Street and the Aldwych is LSE Garrick. The ground floor of this café serves a variety of hot and cold drinks, sandwiches and snacks while the lower floor offers a main meal service. It makes an ideal place to rest at the end of your tour.

You have now explored LSE!

FIND OUT MORE



Come to an open day or join a campus tour:
lse.ac.uk/openDays



Experience our Virtual Open Day:
lse.ac.uk/virtualopenday



Find out when LSE will be visiting your region:
lse.ac.uk/LseVisitsYou



Read our blogs about LSE student life:
lse.ac.uk/studentBlogs



Why not email an alum:
lse.ac.uk/emailAnAlum



View our YouTube channel:
youtube.com/Lsewebsite



Keep up to date with us on Twitter:
twitter.com/StudyLSE



Like us on Facebook:
facebook.com/Lseps



Contact us:
lse.ac.uk/studyContactUs



To **Holborn Tube** station on the corner of Kingsway and High Holborn, for the **Piccadilly and Central** lines

LINCOLN'S INN FIELDS

32 LINCOLN'S INN FIELDS Acquired by LSE in 2013, this building is now home to the Department of Economics. It is Grade 2 Listed and great care has been taken to preserve the building's historic features and character during its renovation.

THE NEW ACADEMIC BUILDING

At the Building's centre is a specially-commissioned artwork by Joy Gerrard featuring hanging globes to represent constellations of ideas and the way that major political or economic thoughts echo through public life.

THE PEACOCK THEATRE When not being used by LSE, the Peacock Theatre is Sadler's Wells home in the West End. Here they present popular dance styles from cultures around the globe as well as related forms such as circus and physical theatre.

SAW SWEE HOCK STUDENT CENTRE

The Centre's dramatic sculptural form and unusual perforated brick façade have inspired critics to describe it as "richly considered and finished", "eccentric and deeply satisfying", "fantastically individual" and "a fold-out marvel [and] lesson in architectural origami".

THE LIBRARY The Library subscribes to over 50,000 e-journals as part of its electronic information provision and has over four million separate printed items, including over 33,000 past and present journal titles. The Library has the longest opening hours of any university library in Britain, with 24 hour access for LSE students and staff.

PORTUGAL STREET

PORTUGAL STREET

JOHN WATKINS PLAZA

SHEPHERD STREET

PORTUGAL STREET

THE OLD BUILDING The School's coat of arms, including its motto and beaver mascot, were adopted in 1922. The motto – *rerum cognoscere causas* – means "to know the causes of things". The beaver mascot was selected for its associations with foresight and industrious behaviour.

BABY TEMBO AND THE PENGUIN

Two examples of twelve pieces of art donated to the School by Louis Odette, an LSE alumnus and noted patron of sculptures in public spaces.

THE PARISH HALL Used by students and staff for activities such as dancing, drama/performance rehearsals and sports.

CLEMENT HOUSE Home to the Department of International Relations, a subject that has been taught at LSE since 1924.

THE GARRICK Downstairs, the Garrick serves main meals at lunchtime whilst the ground floor café offers a wide range of drinks and light snacks throughout the day.

CLARE MARKET

HOUGHTON STREET

← THE ALDWYCH →

To **Temple Tube** station on Victoria Embankment, for the **District and Circle** lines

