



THE LONDON SCHOOL  
OF ECONOMICS AND  
POLITICAL SCIENCE ■

# Graduate Open Evening: Research at LSE

## 4 November 2015

Louisa Green, Deputy Director PhD Academy  
Matthew Brack, Deputy Research Degrees Manager





# Research at the LSE

---

- What is a PhD?
- Research at LSE
- Applying to LSE
- Questions



# What is a PhD (at LSE) ?

---

- **Length:** 2-4 years (f/t); 4-8 years (p/t)
- **Format:** MPhil/PhD or MRes/PhD
- **Structure:** taught courses – fieldwork/research - thesis
- **Study hours:** 30+ hours per week
- **Independent study:** supervisor = specialist in chosen field
- **Fieldwork:** period of time for data collection
- **Conferences:** attendance and presenting
- **Assessment:** 100,000 word thesis; series of papers (in some departments) and viva examination

*Look at:*

**Calendar of programme regulations and course guides** for specific programme details

<http://www.lse.ac.uk/resources/calendar/research.htm>



# What is a PhD?

---

The thesis will:

*“form a **distinct contribution** to the knowledge of the subject and afford evidence of originality by the discovery of new facts and/or by the exercise of independent critical power”; and*

*“demonstrate **research skills**”; and*

*“be of a **standard to merit publication** in whole or in part or in a revised form” ...*

Look at:

**Regulations for Research Degrees** for PhD requirements

<http://www.lse.ac.uk/resources/calendar/research.htm>



# What is a PhD student?

---

## Characteristics of a PhD student:

- ability to process complex concepts and reason analytically
- capacity for independent thought, research and learning
- organisational skills
- motivation and perseverance
- enthusiasm

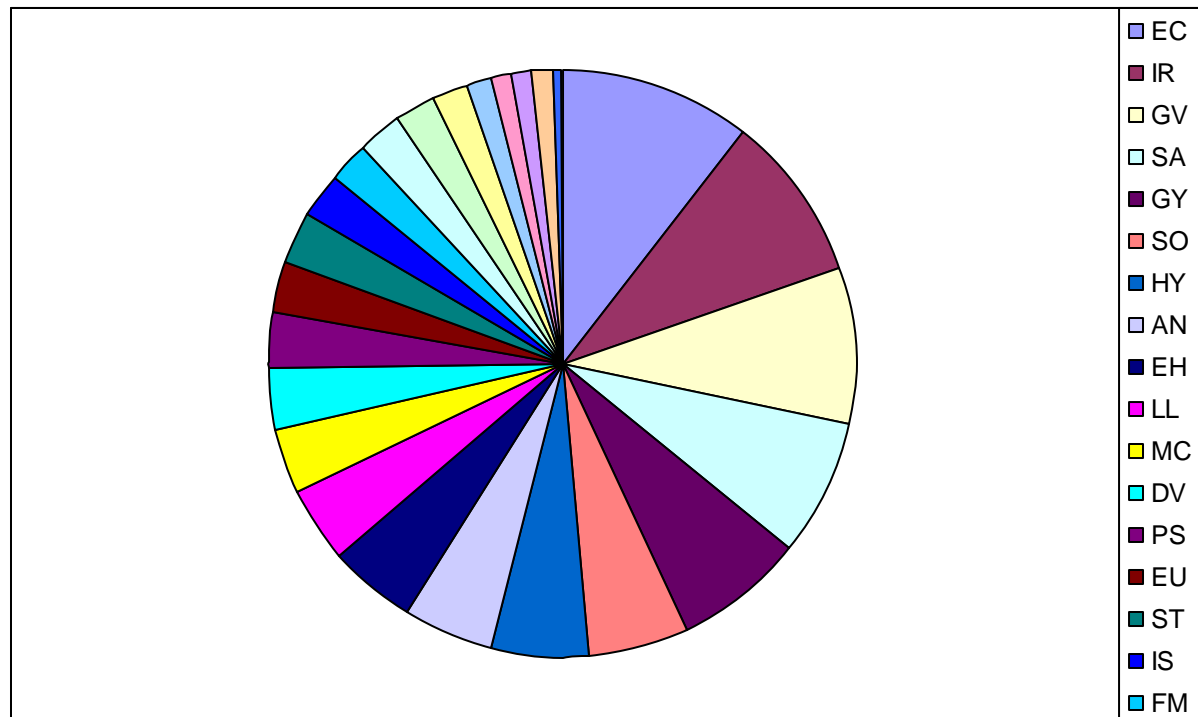


# Research at LSE: students

---

- 10,000+ students
- **@800 are MPhil/PhD**; @160 new research students in 2015
- 70% students from outside UK - students from 160 countries
- @50:50 gender balance

# LSE: spread of PhD students by department





# LSE: PhD study support

---

- **PhD Academy** <http://www.lse.ac.uk/study/PhDAcademy/home.aspx>
  - Interdisciplinary space for: advanced training, networking
  - Academic and professional development support programme
  - Drop in support services: counselling, careers, methods
- **Library**
  - Largest academic social-science library in the world
- **Language Centre**
  - Languages and English for academic purposes

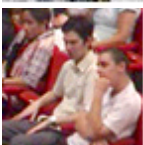




# Information on applying

---

- **General Information stands**  
(5.30-8pm, NAB, ground floor & Saw Swee Hock Student Centre)
- **Academic Department Information stands**  
(5.30-8pm, NAB, SSC)
- **Funding your Studies Talk**  
(5.45-6.15pm & 7.30-8.00pm, Sheikh Zayed Theatre)



# Entry requirements

---

## ■ MPhil/PhD:

Masters of merit level & merit in dissertation (in same/related discipline)  
*plus*

Higher English language proficiency score

## ■ MRes/PhD requires:

first/upper second class honours degree (in same/related discipline).

Prior qualification will determine which particular track of the programme entered onto (where this applies).

Upgrade to the PhD requires successful completion of the MRes at merit level

*Look at:*

**Graduate study website** for entry requirements listed by programme

<http://www2.lse.ac.uk/study/graduate/availableProgrammes.aspx#mphil>



# The application process

---

- **October 2016 entry**
- **online application & fee**
- **department-specific deadlines published**
- **includes funding application**
- **standard application materials *plus* research proposal *plus* sample of written work**

*Look at:*

**Graduate Study website** for deadlines, including funding deadlines, application Information <http://www2.lse.ac.uk/study/graduate/availableProgrammes.aspx#mphil>



# Research proposal

---

**Research proposal (1500 words):**

- **What is your research topic?**
- **What questions do you want to answer?**
- **What is the key literature and its limitations?**
- **What are the main hypotheses of the work?**
- **What methodology do you intend to use?**
- **What are your case studies, if any, and what are your case selection criteria?**



# Selection criteria

---

**Any offer of a place would depend on:**

- quality/feasibility of your research proposal
- academic qualifications
- available supervision
- interview



# What will it cost?

---

- **tuition fees**
- **fieldwork**
- **research (data collection/interviews)**
- **proof reading services**
- **living costs in London**
- **conference attendance costs**
- **.....**



# In summary

---

- MRes or MPhil route?
- Research proposal?
- Who can supervise me?
- Funding (fees and living/other costs)?
- Other commitments?
- Mode of study?
- Visa requirements?

*Look at:*

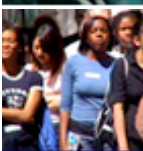
**LSE Experts Directory** for expertise of LSE staff

**PhD Academy** for support in doing a PhD at LSE

**LSE Theses Online** for examples of LSE doctoral work

**QAA/NUS Guide for Doctoral Applicants** for general advice about PhDs

**Vitae Researcher Development Framework** for information on researcher characteristics



# Questions?

---

**Your questions ...**





# Some useful weblinks

---

## **PhD Academy:**

<http://www.lse.ac.uk/study/PhDAcademy/home.aspx>

## **Graduate prospectus:**

<http://www2.lse.ac.uk/study/graduate/home.aspx>

## **Table of fees:**

<http://www.lse.ac.uk/intranet/students/moneyMatters/tableOfFees/home.aspx>

## **Financial Support:**

<http://www2.lse.ac.uk/intranet/students/moneyMatters/financialSupport/Home.aspx>

## **Calendar of programme regulations/course guides & PhD requirements:**

<http://www.lse.ac.uk/resources/calendar/research.htm>

## **LSE Experts Directory:**

<http://www2.lse.ac.uk/researchAndExpertise/Experts/Home.aspx>

## **LSE Theses Online:**

<http://etheses.lse.ac.uk/>

## **QAA/NUS Guide for Doctoral Applicants:**

<http://www.qaa.ac.uk/Publications/InformationAndGuidance/Pages/Doctorate-guide.aspx>

## **Vitae Researcher Development Framework:**

<http://www.vitae.ac.uk/CMS/files/upload/Vitae-Researcher-Development-Framework.pdf>