



LSE Careers

Graduate open evening 2015



This evening..

- **What LSE graduates do**
- **What employers look for**
- **Opportunities at the LSE**
- **What LSE Careers can do for you**



Politics,
Government and
Public Sector 15%

Banking and
Finance 13%

Consultancy 12%

Education and
Teaching 12%

Education,
Charities and
Development 8%

Accounting and
Auditing 5%

Research 5%

What LSE graduates (postgraduate specific) do:
Top Sectors



Top 10 employers of LSE postgraduate students

1. LSE
 2. PwC
 3. Deloitte
 4. KPMG
 5. European Commission
 6. Deutsche Bank
 7. EY
 8. McKinsey and Company
 9. Boston Consulting Group
 10. JP Morgan
- 

- Policy Adviser – Department of Environment, Food and Rural Affairs
- Urban Development Manager, Siemens
- Sales and Marketing Graduate Programme – Coca-Cola
- Parliamentary Assistant – European Parliament
- Program Assistant – Bill & Melinda Gates Foundation
- Research Analyst – Institute for Justice
- Business Analyst – McKinsey & Company
- Digital Marketing Assistant – Burberry
- International Graduate Programme – Standard Chartered Bank
- Corporate Finance Analyst – Oxera
- Fundraising Officer – IntoUniversity
- Public Affairs Officer – Toynbee Hall

What LSE postgraduates do:
average salary £33,056



Information for new students

About us

Careers events

Career planning & job hunting

CVs, cover letters & application forms

Interviews, assessment centres and psychometric tests

Employment sectors

International careers

Internships & work experience

Online and interactive resources

Postgraduate study

PhD students & research staff

LSE Parliamentary Internships

LSE Entrepreneurship

Students with disabilities

Frequently asked questions

How to contact us

LSE Careers

Floor 3, Tower 3 (TW3)
Houghton Street
London
WC2A 2AE
[Maps and directions](#)

Opening hours:

Monday to Friday: 10am - 5pm
During term time and vacations
(except when LSE is closed)

Student enquiries:

+44 (0)20 7955 7135

Resource area

Visit our enquiry desk and browse our books, leaflets and resources on floor 3, Tower 3

News

Events

Featured opportunities

Find us online

Bastian Richter – Executive Officer, UNICEF

Bastian Richter graduated from LSE in 2010 with a MSc Global Politics and now works as an Executive Officer at UNICEF. To read more about his progress since leaving the school, read his full [graduate profile](#).



LSE Careers Law Fair – booking open

If you're interested in pursuing a career in law, come along and discover more about the opportunities available at the LSE Careers Law Fair on 5th and 7th November. From top firms to legal training providers this is a one-stop shop to meet employers and answer all your questions on training contracts, vacation schemes, 1st year taster schemes, the LPC and GDL and much more.

Booking is open now on LSE CareerHub. This is a two night fair and different employers will be attending on each night. To make the most of this opportunity, book a slot on both **night one** and **night two** of the fair.



Over 1000 vacancies now on LSE CareerHub!

It's that time of year where students are frantically searching for jobs, internships and volunteering opportunities. Fortunately, LSE Careers is here to help.

We're pleased to announce that this week we've reached over 1000 opportunities on our vacancy board! This includes over 200 internships and 130 volunteering opportunities. Whether you're looking at graduate employment, short term internships, part time jobs or fantastic volunteering opportunities, we've got it covered. So make sure to check out [LSE CareerHub](#) so you don't miss out!



Patrons of LSE Careers

[Accenture](#) | [Allen & Overy](#) | [AlphaSights](#) | [Bank of America Merrill Lynch](#) | [Barclays](#) | [Barnardo's](#) | [BDQ](#) | [Bloomberg](#) | [BMC Software](#) | [BNP Paribas](#) | [Booz & Company](#) | [The Boston Consulting Group](#) | [Citi](#) | [City Year UK](#) | [Civil Service Fast Stream](#) | [Clifford Chance](#) | [Coin Street Community Builders](#) | [Credit Suisse](#) | [Deloitte](#) | [Detention Action](#) | [Deutsche Bank](#) | [dunnhumby](#) | [European Investment Fund](#) | [EY](#) | [Fidelity Worldwide Investments](#) | [FoodCycle](#) | [Freshfields Bruckhaus Deringer](#) | [Frontier Economics](#) | [FTI](#)



Career Insights: 39 LSE alumni case studies, graduate vacancies and course providers.

Our services

[LSE Careers home \(you are here\)](#)

[LSE CareerHub](#)

[LSE Volunteer Centre](#)

[LSE Entrepreneurship](#)

[LSE Graduate Destinations](#)

[Services for PhD students](#)

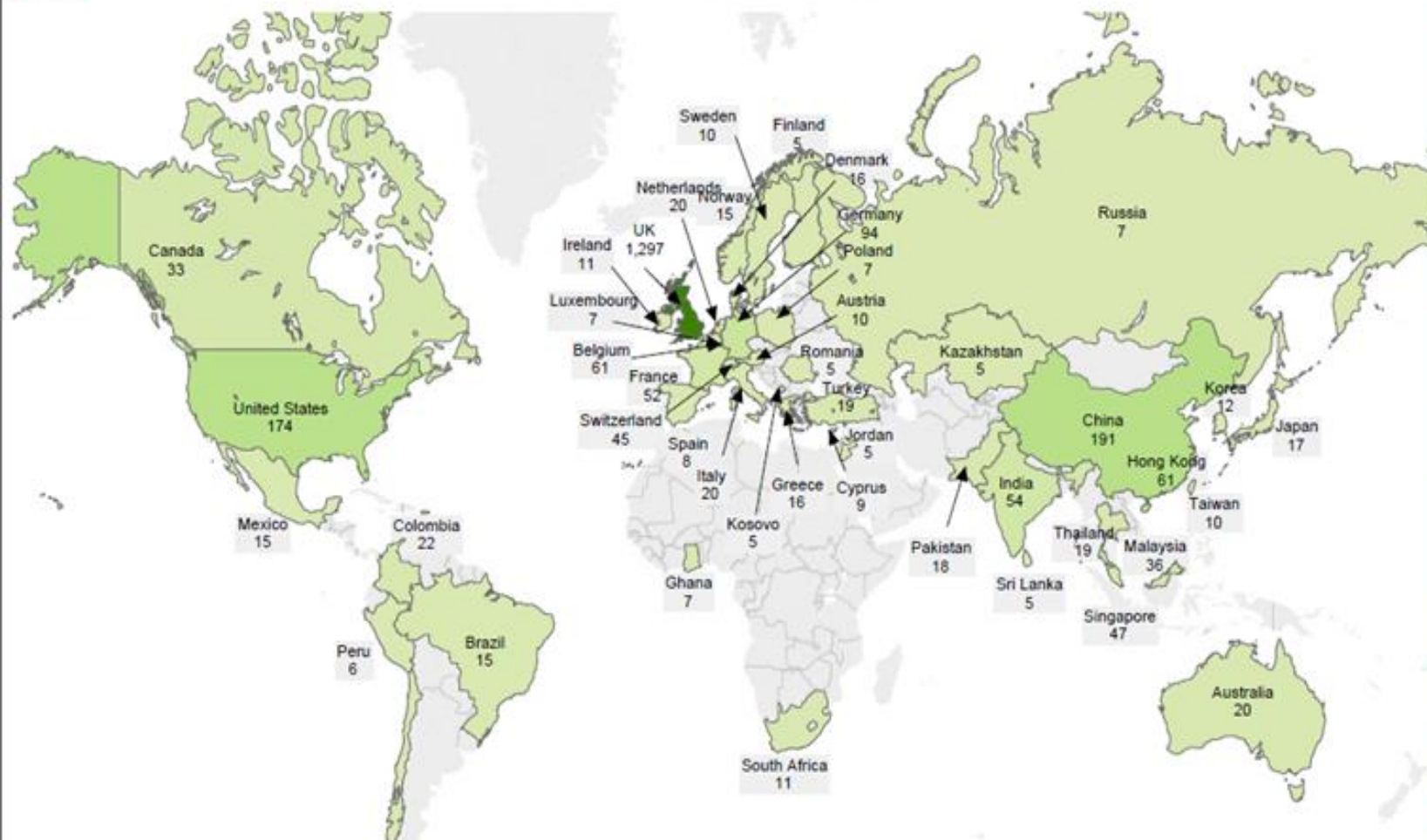
[Services for alumni](#)

[Services for employers](#)

Latest tweets from LSE Careers

 **LSE Careers** 2h
@LSECareers
Discover legal opportunities in Hong Kong with Mayer Brown JSM
bit.ly/1cQjrR7
[Expand](#)

LSE DLHE 2013/14: Employment locations



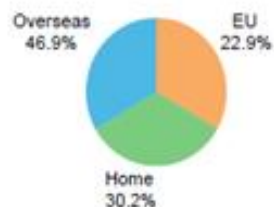
Top 10 countries

UK	1,297
China	191
United States	174
Germany	94
Belgium	61
Hong Kong	61
India	54
France	52
Singapore	47
Switzerland	45

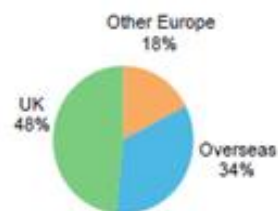
Top 10 cities

London	1,131
Shanghai	79
Hong Kong	67
Washington D.C.	59
Brussels	58
Beijing	57
Paris	49
Singapore	45
Kuala Lumpur	27
Frankfurt	24

Student fee status



Employment country



London Vs rest of UK



What employers look for

- Many opportunities in the UK are open to graduates of any discipline
 - What do employers want?
 - Hard skills: technical knowledge, languages, IT skills, commercial awareness
 - Soft skills: interpersonal skills, integrity, problem solving, teamwork, flexibility, drive





How to prove you have these skills?

- Strong and consistent academic record
- Work experience (full time, part time, internships, work shadowing)
- Volunteering
- Extra curricular activities (societies and clubs)
- Interests and passions i.e. sports, music





How can LSE Careers help you?

LSE Careers: Jobs

- We advertise on our vacancy board.....
 - Part time work to fit around your studies
 - Internships (including the postgraduate Parliamentary Internships scheme)
 - Full time graduate opportunities
 - Experienced hire roles
- Currently 1714 jobs on our vacancy board



Volunteering whilst at LSE

David Coles

volunteer@lse.ac.uk

www.lse.ac.uk/volunteercentre

hey you, with the
beautiful
smile

Volunteering whilst at LSE

Mentor - IntoUniversity

Memory Loss Befriender – Association of Jewish Refugees

Woman Business Mentor – Cherie Blair Foundation

Historical Steward, Kenwood House – English Heritage

Digital Connector – Get Connected

Research Officer – The Moroccan Children's Trust

Gender and Education Advisor – VSO

Social Policy Intern– Westminster Befriend a Family

LSE Careers: Employer events

Fairs

- Banking and Finance
- Consultancy
- Business and Management
- Law
- Marketing, Media and Communications
- Internship
- Volunteering

Plus...

- Public Sector and Policy Conference
 - Inc. panels on Working in a Think Tanks, Public Affairs and for the UK Civil Service
- International Organisations Day





- Forums and panel events
 - Central and course specific
 - **Media/Political Risk, Conflict and Security/Economist Forum**
- Presentations
 - Varied employers
- Skill sessions and core programme of events through the year (includes a summer programme)
- **Plus centrally organised Public Lectures...**

LSE Careers : Events



LSE Careers: Entrepreneurship

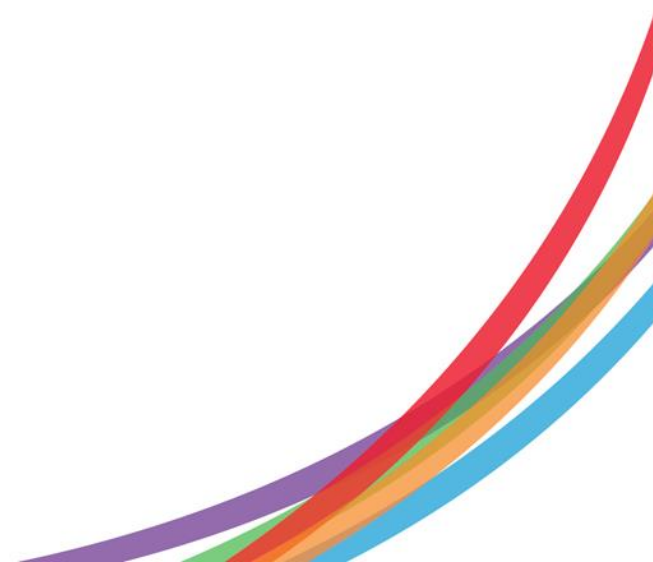
The Generate Programme

- We offer...
 - Start up in a day
 - Master classes and Case Studies
 - Entrepreneurship blog and forum
 - Site open days
 - LSE Entrepreneur of the Year
 - Entrepreneurial internships
 - Entrepreneur drop in sessions
 - Funding
 - Plus a variety of essential start up online resources



LSE Careers: Advice

- One to one appointments
 - Career guidance
 - Support with applications
 - Practice interviews
- Talks and workshops on career related topics (central and departmental)
- Comprehensive website
- Follow us on facebook and twitter



Where are we?

Saw Swee Hock Student Centre

Open Mon – Fri from 9-5pm and until 8pm on a Thursday



Patrons of LSE Careers

Accenture , Allen & Overy, AlphaSights, Bank of America Merrill Lynch, Barclays, Barnardo's , BDO, Bloomberg, BMC Software, BNP Paribas, Booz & Company, The Boston Consulting Group, Citi, City Year UK, Civil Service Fast Stream, Clifford Chance, Coin Street Community, Builders, Credit Suisse, Deloitte, Detention Action, Deutsche Bank, dunnhumby, European Investment Fund, EY, Fidelity Worldwide Investments, FoodCycle, Freshfields Bruckhaus Deringer, Frontier Economics, FTI Consulting, Goldman Sachs, GIC Private Limited, Herbert Smith Freehills, HSBC, ICAP, IntoUniversity, JP Morgan, KPMG, Linklaters, Macquarie Group, Markit, McKinsey & Company, Morgan Stanley, MyBnk, Nomura International, OC&C Strategy Consultants, Octavia Foundation, Oliver Wyman, Oxera, PRMA Consulting, Procter & Gamble, PwC, READ International, Restless Development, Royal Bank of Scotland Group, Shell, Société Générale, Standard Chartered, Swiss Re, Trading Point, Travers Smith, UBS, UniCredit Group, Unilever, The University of Law, White & Case, Willis

In the bottom right corner, there are several thick, curved lines in various colors (red, orange, yellow, green, blue, purple) that sweep upwards and to the right, creating a dynamic graphic element.

Questions?

