



Remember you can access the archive of newsletters on our [website](#).  
January's focus topic is **Funding and Finance**.

## FUNDING AND FINANCIAL SUPPORT

LSE makes available over £12 million annually in financial support for its students via a range of scholarships, bursaries and award schemes.

Approximately 19% of taught masters offer holders are successful in obtaining some form of financial support from the School.

### Taught master's funding

There are a range of awards available for study at this level. The value of support can range in value from 10% of the tuition fee, to a full fees and maintenance award.

Support is available for most programmes through the [Graduate Support Scheme \(GSS\)](#), [country- based awards](#), and [programme-based awards](#).

You can apply for funding via the Graduate Support Scheme through your [LSE for You \(LFY\)](#) account – you only need to apply once to be considered for all awards except for some country/programme based awards, please do check the links above for full details of each award.

If you are unsuccessful in obtaining GSS funding, your details will be kept on file for consideration for any other awards being offered by LSE, for which you may be eligible.

### Quick links

- [Graduate Admissions](#)
- [Access older editions of the newsletter](#)
- [Offer Pack \[PDF\]](#)
- [Department contacts](#)
- [Term dates 2016/7](#)
- [LSE for You](#)
- [FAQs](#)
- [Careers](#)
- [Graduate Destinations](#)



## External funding

There are also many [external organisations](#) that may be able to offer you funding to support your graduate studies, and we recommend that you explore as many options as possible.

Make sure you check the terms and conditions of any scholarship before you accept it. If you require any additional proof of your offer when applying for a scholarship, please complete [this form](#) and we will be happy to provide this for you.

## LSE Anniversary Scholarships

We are delighted to announce that we will continue to offer a number of our LSE Anniversary Scholarships for 2016.

The awards will vary in value, based on financial need, and are designed to help with fees and living costs. The minimum award will be £5,000 and the maximum award will be worth £25,000.

Selection will be made based on the application to the Graduate Support Scheme (see further details above), please note you must complete Section G - Personal Statement.

## PHD FUNDING

Your academic department will nominate a limited number of candidates to be considered for 100 [LSE studentships](#).

These awards cover fees and £18,000 living expenses for four years.

The final decision is made by a School awards panel, and there is no additional application you need to make.

Although the main deadline has now passed to apply for PhD funding, [some programmes](#) are still accepting applications for funding.

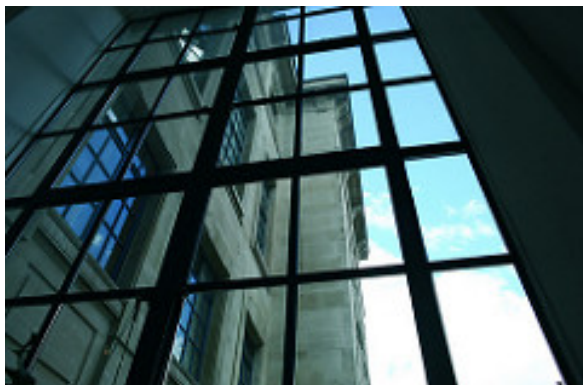


## TUITION FEES

**Your tuition fees will be detailed on your official offer letter.**

You can choose to pay your fees in instalments; if you choose to do so the first instalment of at least 34% will be due on, or before, the 28<sup>th</sup> October 2016.

You can pay all or part of your fees ahead of registration if you wish. The payment link is found in your [LSE for You](#) account.



## LOANS

If you will be using a Professional or Career Development Loan (UK/EU), or a US or Canadian loan, our [Fees office](#) can assist you with processing this.

**In person:** Student Services Centre daily between 2.00pm and 3.00pm\*

Student Services Centre  
Ground Floor, Old Building  
LSE  
Houghton Street  
London  
WC2A 2AE

**By email:** [fees@lse.ac.uk](mailto:fees@lse.ac.uk)

**By phone:** +44 (0)20 7955 7765

\* Please be advised that our drop in service only runs on a Monday, Wednesday and Friday outside of term between the hours on 2.00pm and 3.00pm.

**A STUDENT LOAN COMPANY UPDATE WILL BE PROVIDED IN FEBRUARY 2016**

## NOTES AND DATES FOR THE DIARY

Apply for the Graduate Support Scheme as soon as possible. The application process will close on **27 April 2016**.

### NEWS FROM AROUND LSE

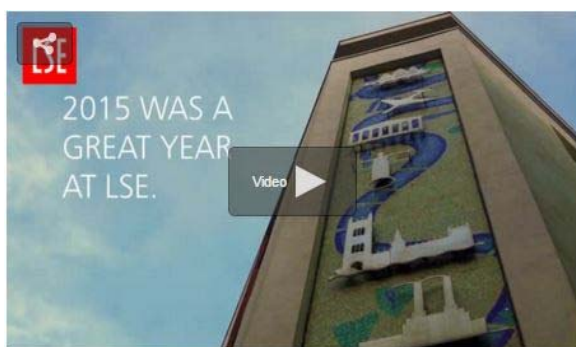
#### Exhibition on Women, Peace and Equality

Have you visited LSE Library? There's so much more than books and study spaces. Visit the brand new free exhibition on Women, Peace and Equality to explore how women have promoted peace and tried to prevent future wars.

<http://www.lse.ac.uk/library/exhibitions/home.aspx>

#### 2015 at LSE: A Year In Review

2015 was a great year to be **#partofLSE**. What does 2016 hold for all of us?



#### Join the global debate at LSE

Have you heard about our fantastic public events programme?

Year round at LSE we run a full programme of debates and lectures, most of which are free to attend and open to students, staff and the public.

We feature over 200 events each year, where some of the most influential figures in the social sciences can be heard. Upcoming events are all featured on the [LSE events website](#).

Our events are not only about economics and politics, as LSE has a vibrant and flourishing cultural side. Thursdays bring free lunchtime concerts in the Shaw Library, we have an annual LSE Literary Festival, and many other film, art and photographic events and societies.

See [LSE Arts](#) and [LSE Space for Thought Literary Festival](#) for more information.

#### LSE IDEAS advising Colombian President Santos on drug policies

Professor Michael Cox and Dr. John Collins of LSE IDEAS will be presenting a new international strategic framework for drug policies after the 'war on drugs' to Colombian President Juan Manuel Santos at a major public event in Bogota on Thursday 28<sup>th</sup> January.

<http://bit.ly/1npA8hv>

LSE IDEAS: is an Institute of Global Affairs (IGA) Centre that acts as the School's foreign policy think tank. Through sustained engagement with policymakers and opinion-formers, IDEAS provides a forum that informs policy debate and connects academic research with the practice of diplomacy and strategy.

<http://www.lse.ac.uk/IDEAS/Home.aspx>



### Twitter

**LSE @LSEnews** · 1h  
What is it like to study on the LSE Master of Public Administration course? Get a taste of @LSE\_MPA life **#partofLSE**  
[bit.ly/1mUGhC1](http://bit.ly/1mUGhC1)

**LSE @LSEnews** · 18h  
First Mayoral debate will be live webcast tonight - Why I should be Mayor of London Tomorrow **#londontomorrow**  
[bit.ly/1PHXpHH](http://bit.ly/1PHXpHH)



Have you joined the LSE Facebook group yet? Click [here](#) to join and be kept up to date with everything that's going on!

Please click [here](#) to suggest topics for future newsletters