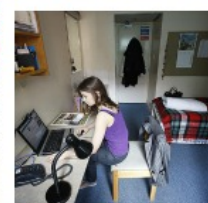
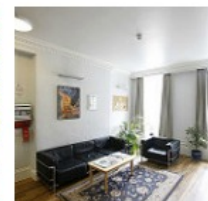




Offer Holder News



Remember you can access the archive of newsletters on our [website](#).
February's focus topic is **Finding Accommodation**.

FINDING ACCOMMODATION

Coming to live in London, and finding the right accommodation here, may seem daunting at first. However, once you have established what your needs are, and what options are available, it shouldn't be long before you've found a home in London with LSE.

LSE Residential Halls

Halls are a great way to meet a real mix of people, from the UK and overseas. Each year we allocate over 4,000 places in Halls, across 20 different locations in central London (nearly all in walking distance of LSE!).

With a broad range of different rooms available, several factors may affect your choice. Choose between catered and self-catered, rooms with or without an en-suite bathroom, and shared rooms to studio flats. All options include utility bills, internet access and contents insurance.

Applications for places in Halls are open now and will close on 31 July 2016 – remember to apply early to ensure you have more choice!

Residential halls at a glance

Click [here](#) to go to 360° tours of our residential halls where you can view and compare the options!

Private Accommodation

Many LSE students live in privately rented housing and commute to the School every day. It may be difficult to arrange this sort of accommodation before arriving in London, as you should inspect any property before committing to rent it. We advise you allow at least two weeks to find a suitable place to live.

Quick links

Graduate Admissions
Access earlier editions of the newsletter
Offer Pack [PDF]
Department contacts
Term dates 2016/7
LSE for You
FAQs
Careers
Graduate Destinations



Please note that all UK landlords are now required by law to check that tenants have a right to live in the UK. All students searching for private housing should therefore be prepared to show prospective landlords their documentation. Accepted documents include:

- **Passport** or national identity card from Great Britain, EEA or Switzerland.
- A full **birth/adoption certificate AND a CAS (Confirmation of Acceptance for Studies) letter** confirming the holder's acceptance on a current course of studies.
- If an international student, a **visa/Biometric Residence Permit** or other travel document endorsed to show that you are allowed to stay in the UK for the relevant time period.

You are not advised to send any original documents via post. Bring the documents with you in person, and ask the landlord to make a copy of the document while you are present,

and to return the original document to you. If you require further information on what you will be required to provide to landlords, please contact private.housing@lse.ac.uk for advice.

LSE halls of residence, and those provided by its partner organisations (**urbanest**, **Sanctuary Housing** and the **University of London**), are **exempt** from the above legislation, and students will **not** need to provide additional documentation to secure a place in any of these **halls**.

[LSE Studentpad](#) allows you to conduct some research before you visit LSE, allowing you to access to lists of properties, make contact with other LSE students also searching for accommodation (via message boards), and to view a wide range of advice on how to find accommodation in London.

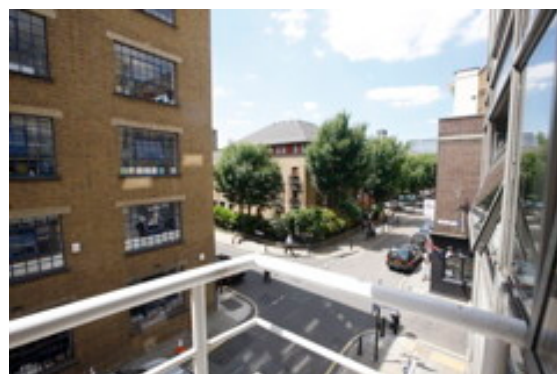
LSE also has short-term temporary accommodation from August if you need to stay in an LSE hall while searching for a flat. Short term accommodation can be booked at lsevacations.co.uk

ACCOMMODATION FEES

Fees for LSE Halls vary depending on the particular hall you choose.

You may wish to check our [2016-17 Table of Fees](#), before deciding which hall is best for you.

A schedule of payment dates will be made available in your licence agreement, but generally, fees are due on a termly basis, by the end of the second week of each term.



CONTACTING RESIDENTIAL SERVICES

If you would like to get in touch LSE Residential Services Office, they would be happy to provide you with advice on LSE Halls and searching for private accommodation.

The Residential Services Office is open from **9am to 5.00pm**, Monday to Friday

In person:

3.02 Saw Swee Hock Student Centre

Houghton Street

London WC2A 2AE

By email:

accommodation@lse.ac.uk

By phone:

+44(0)20 7955 7531

NOTES AND DATES FOR THE DIARY

Apply for the Graduate Support Scheme as soon as possible – at the **very latest by 27 April 2016**.

Make sure your address is kept up to date in LSE for You – you don't want to miss any important communications from us!

NEWS FROM AROUND LSE

Literary Festival

Over 30 exciting events are taking place for this year's LSE Literary Festival, inspired by the anniversary of Thomas More's *Utopia*. High profile speakers from politics and the arts will explore the power of dreams and the imagination. What's your vision for a utopian world?

If you are nearby, get your free tickets to the LSE Literary Festival this February, where leading authors and speakers will explore the importance of idealism, dissidence, escapism and nostalgia, as well as the benefits of looking at the world in different ways <http://bit.ly/1OVV9qs>

Find out what makes our students and professors feel #partofLSE?

This month our Facebook and Instagram channels are showcasing experiences of teaching and learning around LSE, from both student and tutor perspectives.

Catch up with our Podcasts

Have you listened to any of our podcasts yet?

We have a huge collection of podcasts and videos from LSE's programme of public lectures and events, and an archive of more than 600 public podcasts and videos dating from 1990 to 2006 in the [LSE Digital Library](#).

From **Comrade Corbyn: a very unlikely coup** to **Subjects of Reason: goods, markets and imaginaries of the global future**, and **Non-Western Mathematics** to **Your Body By Darwin**, there really is something for everyone.

Student Loan Company update

The UK Government are setting up a new loan scheme for students domiciled in England and the EU. (Students domiciled in Wales, Scotland and Northern Ireland need to check their devolved authorities to see what they are offering). The scheme will open in the summer, eligible students can borrow up to £10,000 to be used for fees or living costs. Watch [this space](#) for updates.

LSE invests a further £11 million on education and student experience

It has been announced that over the next three years, we will be investing a further £11 million in the student experience and education at the LSE.

This is to support our Strategy 2010, and will aim to better integrate our world-renowned research with our innovative and high-quality teaching, and ensure that you have an outstanding student experience.

You can read more on this story [here](#).

Graduate Offer Pack

If you haven't yet received your offer pack, read the online version [here](#).

It includes information on meeting your conditions, supplying your documents, and much more.



Check out some of the latest posts on our Instagram account!



Please [click here](#) to suggest topics for future newsletters