

27 June 2016 - Update from LSE on the EU Referendum outcome



THE LONDON SCHOOL
OF ECONOMICS AND
POLITICAL SCIENCE ■



In yesterday's referendum the UK electorate voted to leave the European Union.

We have already received phone calls and emails from some of you and understand that the vote has left many of you with questions about how this change might impact on your studies at LSE.



Am I still welcome at LSE?

Very emphatically, YES, YES, YES...!

LSE would like to reassure all of our many EU offer holders and students that you are a crucial and extremely valued part of the LSE community. LSE has always been, and will continue to be, global in our outlook. [LSE welcomes students from around the world](#), and currently has students from over 160 countries studying here. [LSE is a welcoming destination for the brightest and best minds](#), and the School's academic mission is enhanced by our talented and diverse staff, faculty and student body.

[LSE is based in London](#) which is arguably the most cosmopolitan city in the world. LSE is a global leader in social science and public policy and we will work tirelessly to protect our links with Europe, our international networks and to ensure we remain an attractive destination for talented people from across Europe and the rest of the world. LSE is and will remain one of the world's foremost sources of knowledge about Europe.

We also want to reassure you that we expect short-term change to be minimal. Leaving the EU will not happen overnight – there will be a gradual exit process over a two year period with significant opportunities to seek assurances and influence future policy.



Will I now need a visa?

No. The U.K. Government will not start the [process](#) to leave until October 2016, and there will then be a period of negotiation which is estimated to be two years. The UK Government will provide an update and publish formal guidance shortly. Once we have any further information, we will put it on [the following page](#), but at present we remain members of the EU and those holding an EU passport will not require a visa.



Will I have to pay international fees?

We have already taken the decision to [maintain the current level of fees for EU students](#) who will **register at the School in 2016-17 OR in 2017-18**, either as new or continuing students.



Will I still be eligible for a postgraduate student loan?

Students from EU countries who are currently at UK universities and those starting in September 2016/7 [will receive student loan support](#) for the duration of their course. If you are not aware of the new Postgraduate Loan scheme, please find information [here](#).



Will it cost me more to study now?

The UK Pound has fallen overnight to a 30 year low in reaction to the announcement that the UK has voted to leave the EU. If you are in a position to pay your fees now, you will want to consider paying your tuition fees in advance and taking advantage of the more favourable exchange rate. The exchange rate could both strengthen and weaken in future months. You can pay your tuition fees via the [graduate application tracker](#).



What will happen to EU students with an ESRC scholarship?

Anyone who currently holds an ESRC scholarship, or is awarded one in 2016, will be funded through the length of the award as stated (i.e. either three or four years depending on the programme, and subject to satisfactory progress).

We will need to await further guidance from the ESRC as to how the referendum decision will affect those starting in 2017/8 or later.



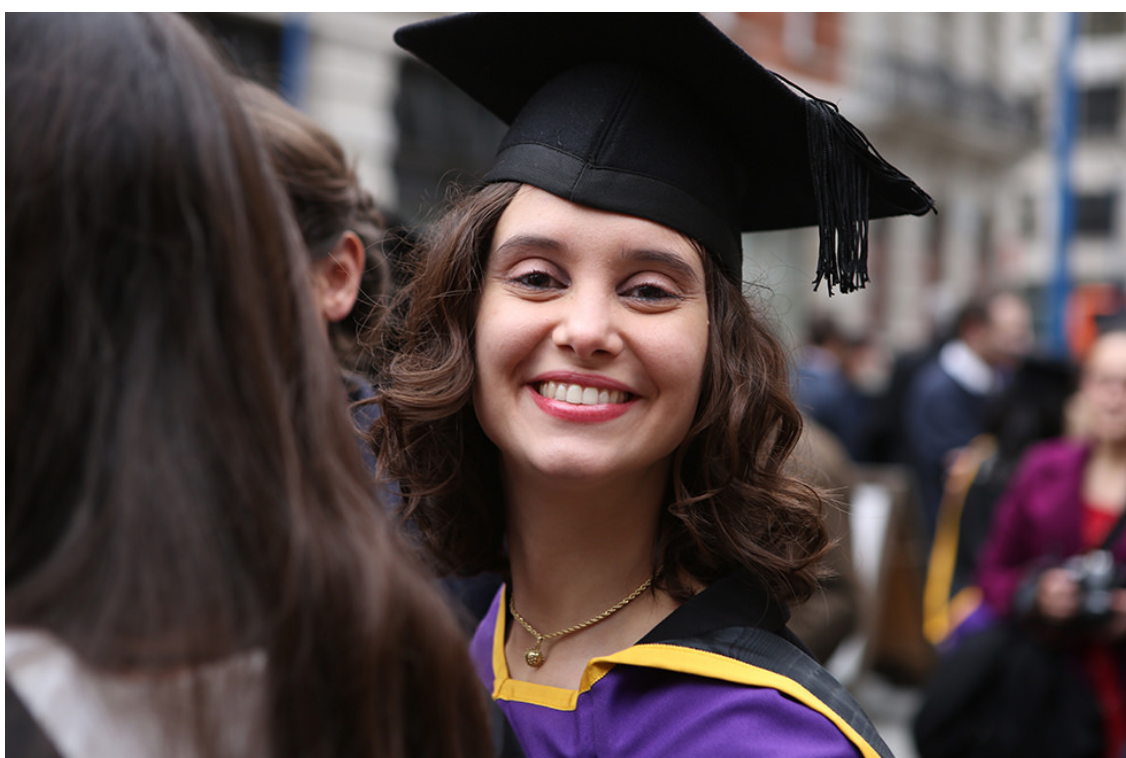
I'm from outside of the EU, will this affect me?

If you are a student from outside of the EU the referendum result has no implications for your immigration status or associated fee status. The current arrangements will continue.



Should I still come?

Nothing has changed to prevent you from studying your course at the LSE in London. EU students starting in September 2016 will still pay Home/EU fees, and will not require a visa. In the future some things may change for EU students, but this is unlikely to have an impact for two years, and the terms of the negotiations and hence the changes have not been decided. There will be a gradual exit process with significant opportunities to seek assurances and influence future policy.



Will you let us know what will happen once the picture is more clear?

The LSE is working closely with [Universities UK \(UUK\)](#), the representative organisation for the UK's universities, [UKCISA](#) the international student organisation and the UK Government to provide clarification on any changes that might impact on EU students coming to study in the UK.

Further updates will be provided as and when they become available.

If you have further questions, please get in touch with Graduate Admissions using our [online enquiries system](#), or by calling +44 (0)20 7955 7160.

You can also [get in touch with your department directly](#).

We are looking forward to welcoming you to LSE.

