



THE LONDON SCHOOL
OF ECONOMICS AND
POLITICAL SCIENCE



北京大學
PEKING UNIVERSITY

LSE-PKU Summer School in Beijing, China

3-14 August 2020



Contents

[Welcome](#)

[Why choose the LSE-PKU
Summer School](#)

[The programme](#)

[Course list](#)

[Our attendees](#)

[Life in Beijing](#)

[Fees and payments](#)

[How to apply](#)

[About LSE and PKU](#)

[Course list](#)

Please refer to our [website](#) to see our most up-to-date list of courses. Confirmed courses currently include:

ECONOMICS

[LPS-EC209 China and the World Economy:
International Monetary Economics](#)

[LPS-EC210 China and Global Financial Markets:
New Risks and Challenges](#)

FINANCE, MANAGEMENT AND STATISTICS

[LPS-FN209 Corporate Finance in a Global
World: Challenges and Opportunities](#)

[LPS-MG202 Human Resource Management in
Multinational Corporations: A Focus on Asia](#)

[LPS-MY201 Big Data: Data Analytics for
Business and Beyond](#)

GEOGRAPHY, GOVERNMENT, MEDIA, PUBLIC POLICY AND SOCIETY

[LPS-GV203 The Challenge of Change: Chinese
Politics and Public Policy](#)

[LPS-GY201 The Political Economy of Urbanisation in
China and Asia: Globalisation and Uneven Development](#)

[LPS-MC204 Chinese Media, Global Contexts:
Convergence and Conflicts](#)

[LPS-PP201 Policy Innovation and Social Governance
in China: from Big Society to Social Credit Scores](#)

[LPS-SA202 A Yellow Dragon in a Flux of Change:
Understanding Social Policy in China](#)

INTERNATIONAL RELATIONS AND LAW

[LPS-IR206 Opening the Black Box: Understanding
Chinese Foreign Policy Making](#)

[LPS-IR209 China's Belt Road Initiative: Development
as Grand Strategy and the Emerging Global Order](#)

[LPS-LL203 Forces Behind the Dynamics of Chinese Business Law](#)

LANGUAGE COURSE

[Pre-sessional Chinese Language Course](#)

For more information visit

[**lse.ac.uk/LSEPKUSummerSchool**](https://lse.ac.uk/LSEPKUSummerSchool)





Welcome to the LSE-PKU Summer School

The London School of Economics and Political Science (LSE) and Peking University (PKU) have collaboratively run the LSE-PKU Summer School in Beijing each August since 2004, and we are delighted to celebrate our 17th programme in 2020.

This exciting two-week programme offers university-level courses taught in English to students and professionals in subjects across the social sciences, all with a focus on China and Asia. It is taught by outstanding faculty from LSE and PKU, two of the world's leading universities for teaching and research, and attracts a cohort of well-informed and engaged students and professionals from around the world.

In 2019 we received over 470 participants. While the majority were students from more than 100 different universities, about 30 per cent were graduate professionals working in a wide range of fields including business, public policy, international affairs, NGOs and law. It is this diversity in the classroom which year after year participants cite as making the LSE-PKU Summer School a truly global and valuable experience; a place in which different perspectives can interact and lead to a vibrant and enriching discussion of issues relevant to China and Asia today.

If you are interested in studying the challenging issues of the 21st century with some of the world's leading thinkers, at a time when understanding China could not be more important, we encourage you to apply to the LSE-PKU Summer School, and look forward to meeting you in Beijing.

Professor Qiwei Yao
Academic Director, LSE-PKU Summer School






Why choose the LSE-PKU Summer School

Study one of our unique courses, taught by LSE or PKU

LSE and Peking University are two of the world's leading institutions for teaching and research and are ranked 27th and 24th globally by *Times Higher Education* for 2020. The summer school offers a variety of innovative courses (all taught in English) plus a two week Pre-session Chinese Language Course. These courses provide excellent opportunities to learn about China and its place in the world, all from within the context of studying in China.

Mix with students and professionals from all over the world

The LSE-PKU Summer School attracts university students and graduate professionals from across the world. Our students represent the best universities around the globe from undergraduate to doctoral level, and our professional participants also come from many different industries including finance, law, media, banking, governments and NGOs. This incredible diversity enriches class discussions and provides excellent networking opportunities for those thinking about the next steps in their academic or professional lives.



"Due to the diversity and the fact that most of the people I met were so well-read, it meant that meeting every single person became an opportunity for me to grow and prosper as an individual on an intellectual level."

Mohammad Mouzannar
Bridge Engineer, Saudi Arabia

"A fascinating culture, highly interesting classes and super lovely people! The LSE-PKU Summer School has been a very exciting and unforgettable experience for me!"

Lara Briechle
BSc International Social and Public Policy with Politics, LSE

"My classmates were the highlight of this trip. We were such a diverse group: everyone comes to class with different experiences, backgrounds and cultures, and I learned a lot from all of them both in class through group discussion and when we were out having fun."

Chih-Yu Chen
Financial Analyst, Japan



Explore Beijing, one of the world's most exciting cities

Beijing is one of the largest and most dynamic cities in Asia, providing a fascinating base from which to learn more about China's economy, politics and social policies, and also to understand how China interacts with the rest of the world. Nowhere else is the contrast between old and new quite so dramatic.

The Peking University campus is also one of the most beautiful in China. The campus, known as "Yan Yuan" – the gardens of Yan – is situated in the Haidian District in the northwestern suburbs of Beijing. The campus includes many traditional style Chinese buildings, a large lake and several former residences and buildings used in old Imperial China. It stands near the Yuan Ming Gardens and the Summer Palace.

"Life in Beijing was great. The city is unlike anything I have seen even while travelling through other parts of Asia. Beijing, and the PKU campus, have something in store for everyone; whether you like art and museums, nightlife and clubs, historical sites and palaces, or simply studying and staying in shape."

Maxim Roben, Vrije Universiteit, Netherlands



THE GREAT WALL – 73km FROM PKU



THE MING TOMBS – 73km FROM PKU



SUMMER PALACE – 3.5km FROM PKU



BIRDS NEST STADIUM – 10km FROM PKU



BEIJING ZOO – 10km FROM PKU



FORBIDDEN CITY – 16km FROM PKU



MIAOYING TEMPLE – 13km FROM PKU



TIAN'ANMEN SQUARE – 19km FROM PKU



GRAND CANAL – 44km FROM PKU



QIANMEN STREET – 24km FROM PKU



TEMPLE OF HEAVEN – 28km FROM PKU



PEKING MAN SITE AT ZHOUKOUDIAN – 54km FROM PKU

Beijing facts

Beijing is home to seven UNESCO world heritage sites including:

The Great Wall

The Forbidden City

The Temple of Heaven

The Summer Palace

The Ming Tombs

Peking Man Site at Zhoukoudian

The Grand Canal



The programme

The LSE-PKU Summer School programme combines the strengths of LSE and PKU in the social sciences. Each course is taught by a specialist in their field who holds a position at one of these world class institutions.

Contact hours and teaching methods

The LSE-PKU Summer School is an intensive, two week programme. As each course is full-time, participants take one course which consists of a total of 48 contact hours between Monday and Friday over the two weeks. Usually this involves 36 hours of lectures, attended by all participants each morning, and 12 hours of seminar classes in groups of up to 15, held each afternoon. However, other teaching methods appropriate to the individual courses may be used and schedules may vary.

Due to the rigorous, academic nature of the programme, participants are strongly advised to consult the online course outlines and to prepare as appropriate for the demands of their chosen course.

Assessment and certificates

All LSE-PKU Summer School courses are assessed and graded, and a transcript and certificate are provided to all participants who successfully complete their course and related assessments.

Most courses feature a final examination, which is normally two hours in length and held on the final afternoon of the programme, Friday 14 August. Please note that these examinations cannot be rescheduled. In addition, courses normally require a second element of assessment such as a mid-term paper or group project. Please consult the [online course outlines](#) for specific details.

Full details of the assessment criteria, marking schemes and deadlines will be provided at the start of the programme.

Participants who do not complete all elements of assessment, but attend at least 80 per cent of the taught sessions, are eligible to receive a statement of attendance.

Obtaining academic credit

The quality of LSE-PKU Summer School courses is given the highest priority. Participating students are often able to receive academic credit towards their degree from their home university upon presentation of their LSE-PKU certificate, transcript and course syllabus. Students who wish to receive credit should speak to their home university as soon as possible.

The [LSE-PKU Summer School Office](#) is very pleased to provide any further information which may be helpful to students or their universities.

Study facilities

During the LSE-PKU Summer School, participants have access to study facilities at Peking University including computer rooms, library, campus wireless network and printing services. However, considering the intensive nature of the programme and the requirement for written papers and research, participants are strongly advised to bring their own laptop or similar device with them. Those taking statistics courses or highly quantitative courses are also advised to bring a suitable calculator. Participants will be assisted in setting up access to IT networks on their portable devices upon arrival at PKU.



Course list

Courses are drawn from across the two universities and divided into four broad subject areas: Economics; Finance, Management and Statistics; Geography, Government, Media, Public Policy and Society; and International Relations and Law.

For an updated list of 2020 courses and for more detailed course outlines please [click here](#).

“The lecturer was great – he clearly knew a lot about the field and openly shared information and his personal opinion too. I also liked that our class ended early enough to do some sightseeing in the evening.”

Meera Sachdeva
University of Oxford, UK



China and the World Economy: International Monetary Economics

This course studies topics in open-economy macroeconomics and international finance.

Topics include Exchange Rates, Current Account Imbalances, Inflation, Sovereign Debt, and Open Economy Macroeconomics, and will also include economic theory as well as several applications. The topics and related case studies are listed in the course outline below.

Course code: **LPS-EC209**

This course is taught by **Dr Cheng Sun**, Assistant Professor at the Guanghua School of Management at PKU.

[Click here](#) for further background information and research details.





The International Financial System in a Post-Crisis World: New Risks and Challenges for Asia and Beyond

This course provides a rigorous analysis of the most critical political, economic, and strategic risks and challenges facing the international financial system after the crisis. It explores how and why these risks and challenges will reshape societies and impact the climate for policymakers and the business community for years to come.

It will investigate these risks and challenges at the global, regional, and national level, with specific reference to the experience of many Asian economies, including how the world economy has emerged from the most serious crisis it faced since the 1930s, but now faces new risks and challenges that bring into sharp focus the tensions present in the international financial system.

We will also investigate how advanced economies struggle to ignite growth and productivity while confronting populist political pressures to roll back globalisation and how China seeks to manage its on-going credit boom and potential financial fragility, while rebalancing its economy and promoting internationalisation of the Yuan.

Course code: **LPS-EC210**

This course is taught by **Professor Jeffrey Chwieroth**, Professor of International Political Economy at LSE.

[Click here](#) for further background information and research details.





Corporate Finance in a Global World: Challenges and Opportunities

Financial markets around the world have become more accessible than ever before and yet every country is different, with its own set of financial, accounting, legal and fiscal systems, and its own cultural norms. Can we use the same corporate finance concepts when we cross borders?

This course introduces students to corporate financial decision making in an international context. We will study the most important financial decisions the corporations make: capital structure, risk management, capital raising, mergers and acquisitions. These decisions will be embedded in a global setting with its own challenges of political and exchange rate risk and differing corporate

governance standards. Along the way, students will learn about the legal framework of the firm as well as more technical aspects of valuation and risk management techniques.

Course code: **LPS-FN209**

This course is taught by **Dr Moqi Groen-Xu**, Assistant Professor in the Department of Finance at LSE.

[Click here](#) for further background information and research details.





Human Resource Management in Multinational Corporations: A Focus on Asia

This course focuses on cutting-edge human resource management (HRM) issues in multinational corporations (MNCs) operating in, or originated from Asia. As such, it will combine lectures on relevant research on particular HRM problems with case studies of practical dilemmas and potential solutions at specific Asia-related MNCs. It is problem-centred

and case-based. The HR problems that have been selected are those that global HR practitioners have mentioned as being the most significant ones. For example, how to design a compensation system for a US-based MNC subsidiary in China? How do China-based MNCs implement a performance management

system for employees in developed countries or facilitate knowledge sharing after acquiring units in advanced economies? The cases (often from Harvard Business School Cases) will show what some Asia-related MNCs did to address particular issues and further challenges they faced.

Course code: **LPS-MG202**

This course is taught by **Dr Chunyun Li**, Assistant Professor in the Department of Management at LSE.

[Click here](#) for further background information and research details.





Big Data: Data Analytics for Business and Beyond

In this modern information age, the broad availability of “Big Data” (ie, data of unprecedented sizes and complexities) brings opportunities with challenges to business and beyond. For example, companies focus on exploiting data to gain competitive advantages; cyberspace communications reveal complex social interactions; and Big Data surveillance is an effective way to detect actionable security threats.

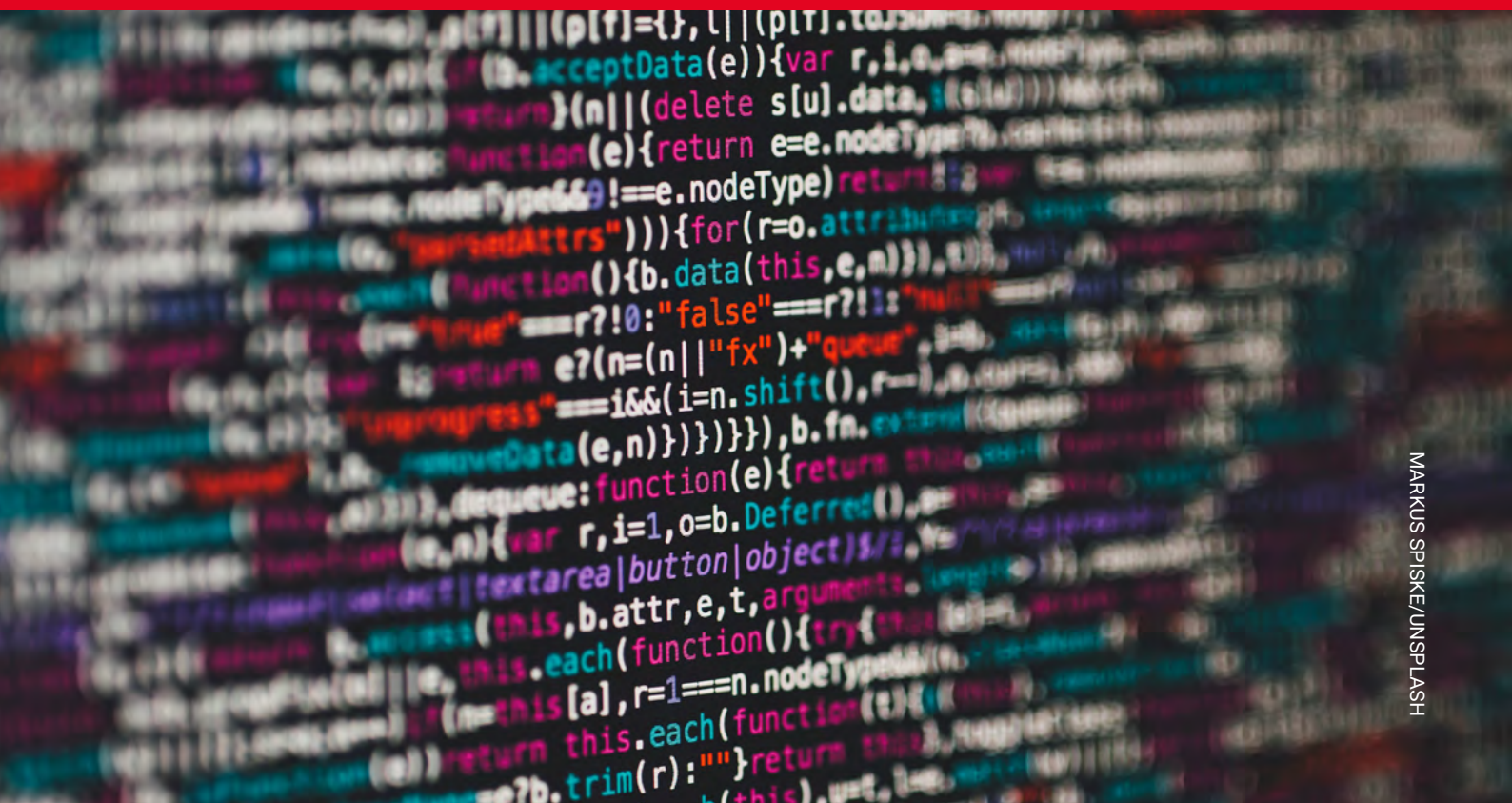
With the introduction of some basic data analytic methods and data-driven decision-making (DDD), the primary goal of this course is to help participants view various problems from business, science and social domains via

a data perspective, and to understand the principles of extracting useful information from data using real-life examples (some from China).

Course code: **LPS-MY201**

This course is taught by **Professor Qiwei Yao**, Professor of Statistics at LSE.

[Click here](#) for further background information and research details.





The Challenge of Change: Chinese Politics and Public Policy

This course explores contemporary Chinese politics with a special focus on its policy making processes, China's political structure, and state-society relations.

This course provides a background on major political events in modern China, then moves on to investigate current political issues in China. Themes covered in the course include, environmental issues, civil society, challenges and benefits associated with continuing

economic liberalization, and discourse from within the Chinese Communist Party (CCP) on political reform.

Course code: **LPS-GV203**

This course is taught by **Dr Shaohua Lei**, Assistant Professor in the School of International Studies at PKU.

[Click here](#) for further background information and research details.





The Political Economy of Urbanisation in China and Asia: Globalisation and Uneven Development

The course explores the contemporary dynamics of urbanisation in Asia, with special emphasis on cities in China and other East and Southeast Asian economies, which share the experiences of rapid urban development with strong state intervention in the context of condensed industrialisation.

The course will benefit from the geographical advantage of taking place in Beijing and make use of a number of China case studies to examine the differences as well as similarities of urban development between Chinese and other Asian cities. Applying interdisciplinary and comparative perspectives, the course

encourages students to develop critical knowledge and comparative understanding of how urban space is transformed in different social, economic and political settings, and what socio-spatial implications are made in a differentiated way upon local populations.

Course code: **LPS-GY201**

This course is taught by **Professor Hyun Shin**, Professor of Geography and Urban Studies at LSE.

[Click here](#) for further background information and research details.





Chinese Media, Global Contexts: Convergence and Conflicts

Chinese media and communication industries have been undergoing profound changes in the last few decades. On the one hand, we frequently hear the all-too-familiar stories about censorship and surveillance in China that repress freedom of expression; while on the other hand, the Chinese government prioritises the communication industry as a key sector driving economic growth.

This course provides critical analysis of the key aspects of the aforementioned transformation, focusing on the political economy of media and communication industries as well as the

mediated politics underpinning stories and texts. It will unpack the operation of media and communication industries at the intersection of politics, business and culture. It will also explore the tensions and conflicts around meanings and narratives at the conjuncture of China's economic growth, social stratification and geopolitical repositioning.

Course code: **LPS-MC204**

This course is taught by **Dr Bingchun Meng**, Associate Professor in the Department of Media and Communications.

[Click here](#) for further background information and research details.





Policy Innovation in Contemporary China: From “Big Society” to Social Credit Scores

China’s meteoric rise as an economic superpower has improved the well-being of most its citizens, but development has also brought with it a number of new challenges. To address complex social, economic, and environmental problems, China has cultivated a long history of developing, testing, and implementing a wide range of macro and micro level policy innovations. The course uses tried and tested innovations, like the “big society”, and brand new ones, such as the Social Credit system set to launch in 2020, as lenses through which students explore key questions: How do states organize and manage societies? Why are some policy innovations employed over

others? How can states, societies, and markets work in cooperation to address pressing social problems? How successful are these schemes, and how might they differently affect particular groups? And, how can we anticipate (and potentially minimise) the unintended effects of planned social management policies?

Course code: **LPS-PP201**

This course is taught by **Dr Timothy Hildebrandt**, Associate Professor of Social Policy and Development at LSE.

[Click here](#) for further background information and research details.





A Yellow Dragon in a Flux of Change: Understanding Social Policy in China

Historically and literally, a dragon is a symbolic icon of state power in Chinese culture. More frequently, the role of the state is usually more visible in Chinese society because of its solid centralised power structure.

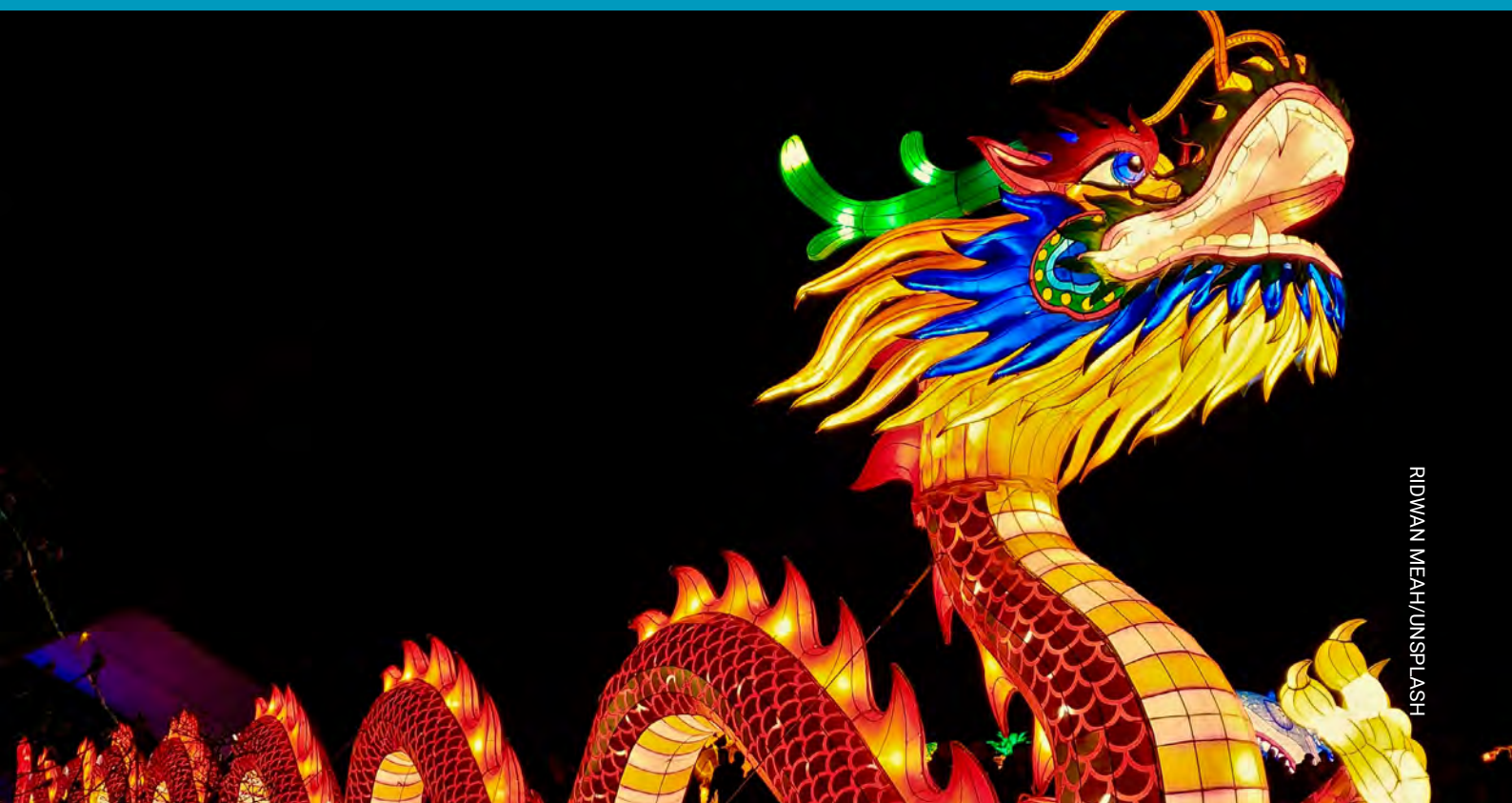
As China has surfaced as an economic giant in the context of globalisation, how this post-socialist country will adjust itself to a profoundly-changed society and strategically respond to the growing social tensions and diverse needs remains appealing. In advanced industrialised democracies, social policy is widely adopted by government to address social issues, such as poverty, health inequality, ageing, unemployment and housing

shortage. In China, social policy didn't exist as an independent policy arena in the period of planned economy. Economic reform and openness started in the late 1970s and created a massive impact on the social fabric and the trajectories of social welfare and social protection development.

Course code: **LPS-SA202**

This course is taught by **Professor Xiong Yuegen**, Professor in the Department of Sociology at PKU.

[Click here](#) for further background information and research details.





Opening the Black Box: Understanding Chinese Foreign Policy Making

An economically more powerful and confident China is exerting unprecedented influence on global affairs with its proactive diplomacy. In order to predict and respond to China's international behaviour, it is essential to understand the causes behind such conduct. But the very nature of the structure of Chinese society and government has made this a difficult, if not impossible, task, albeit appealing.

The saying that foreign policy making is a black box is more accurate in China than in many other countries. Aiming to open the black box of Chinese foreign policy-making, this course

tries to bridge foreign decision-making theories and Chinese foreign policy-making practice to understand the major factors that shape Chinese foreign policy and how they exert their influences.

Course code: **LPS-IR206**

This course is taught by **Professor Zhang Qingmin**, Professor and Chair of the Department of Diplomacy in the School of International Studies at PKU.

[Click here](#) for further background information and research details.





China's Belt Road Initiative: Development as Grand Strategy and the Emerging Global Order

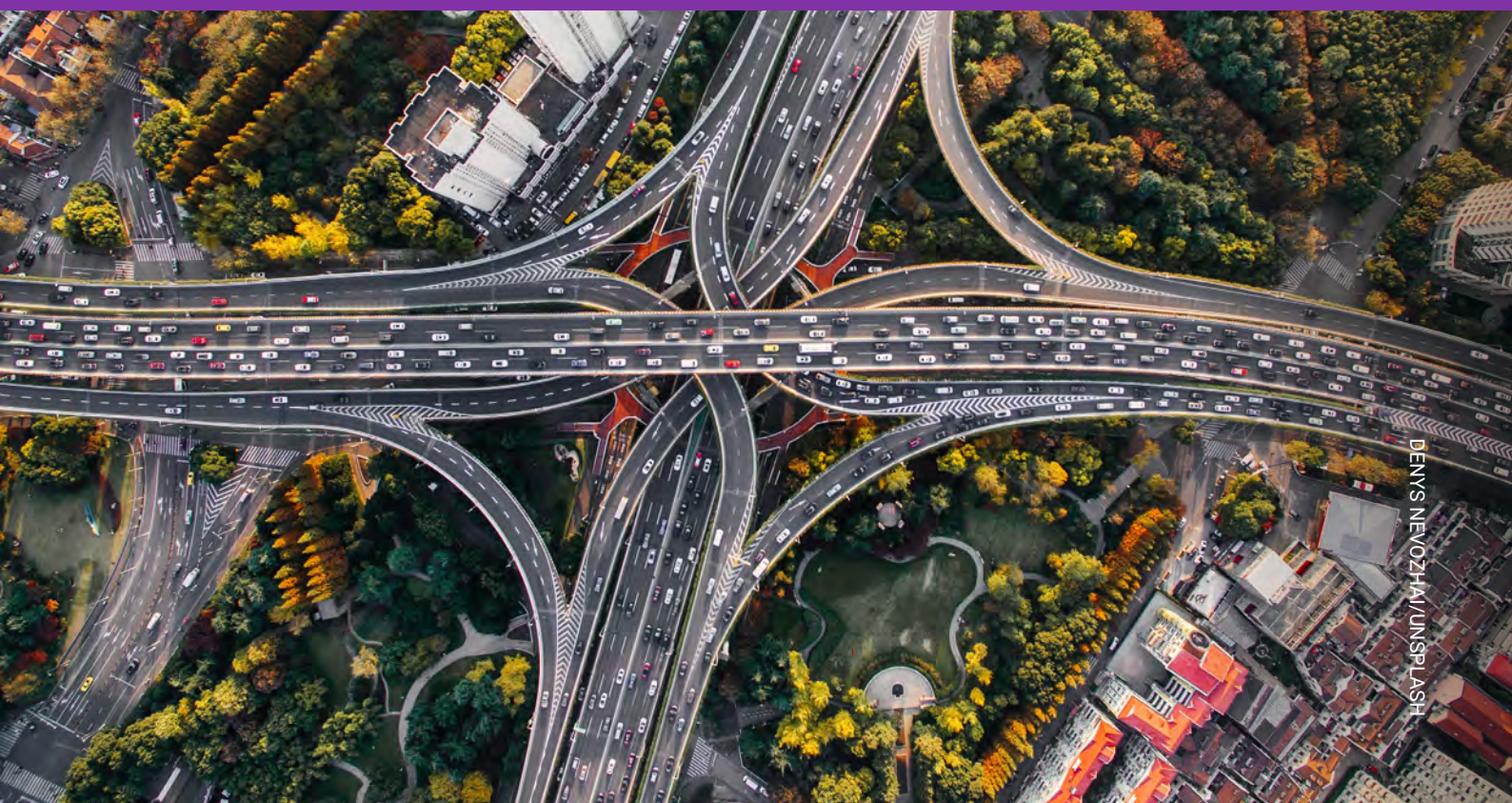
China's economic position, coupled to an astute use of finances flowing from its neo-mercantilist policies, has enabled it to become the leading trading partner and a significant investor in the developing world (or "Global South"). Moreover, through the onset of the Belt Road Initiative (BRI), the Global South is increasingly figuring in Beijing's expanding security interests and soft power provisions. Understanding how dynamics in this relationship are impacting upon a host of global and contemporary issues (BRICs, multilateralism, peacekeeping, the environment) is crucial to the shape of the 21st century. Students will acquire a deeper appreciation of the concept of agency linked to

the varied response of countries and regional organizations to the BRI from policy elites to local communities in the rest of the world, to China's growing structural power, as well as placing Chinese engagement within the context of other 'traditional' and emerging powers.

Course code: **LPS-IR209**

This course is co-taught by **Professor Chris Alden**, Professor of International Relations at LSE and **Professor Alvaro Mendez**, Co-Director of the Global South Unit at LSE.

[Click here](#) for further background information and research details.





Forces Behind the Dynamics of Chinese Business Law

The objective of this course is to provide students with a good understanding of Chinese law, focusing on business and commercial law, including how this law is made, implemented and interpreted, as well as the forces behind its development, from both international and domestic perspectives.

The course will examine the concept and principle of the law, the evolution of this system since 1978, as well as a general introduction to the various forces that are shaping the legal system. It will provide a systematic survey on law-making, interpretation and implementation of law, in an attempt to demonstrate the interaction between the CCP, parliament, the government, and the judiciary, as well as the

central-local relationships, with a focus on the undergoing judicial reform. It will also investigate WTO and China's foreign trade, legal regimes of FDL and ODL, business organization law, IPR protection, as well as China's efforts of internationalizing RMB, free trade zone trials, and rural land reform.

Course code: **LPS-LL203**

This course is taught by **Dr Jianbo Lou**, Associate Professor of Law at PKU.

[Click here](#) for further background information and research details.





Chinese Language Course

Join our two week Pre-session Chinese Course which will take place from 20 -31 July 2020, just before the main LSE-PKU Summer School. This is a two week intensive programme for beginners (20 hours per week), and no previous experience or knowledge of Mandarin is required.

The pre-session course is taught in English and Mandarin and includes coverage of the four skills of listening, speaking, reading and writing and provides a good balance between understanding the systems of Mandarin grammar and vocabulary, developing the skills of comprehending and producing Chinese in

speech and writing, guided practice in language usage and authentic communicative activities. The class size is limited to fifteen to allow intensive interactive practice with individual feedback and advice on progress.

[Click here](#) for for 2020 fee rates.

Please note: this course can only be taken in conjunction with the main LSE-PKU Summer School (it cannot be taken on its own).

Applicants can select this course as part of their application to the LSE-PKU Summer School application form.





Our attendees



Our cohort varies from year to year, but we are able to illustrate the diversity of our most recent demographics through a number of quick facts and illustrations. There is no upper age limit and we welcome applications from suitably qualified university-level students and professionals from all sectors who feel they may contribute to, and benefit from, attending our programme.

OVER **40** NATIONALITIES
REPRESENTED... ...including 24 countries
with 4 or fewer participants

91% ARE FROM
ASIA AND EUROPE

PROFESSIONALS **26%**
STUDENTS **74%** 85% undergraduates
15% postgraduates

97% WERE SATISFIED WITH
THE PROGRAMME OVERALL

 **60%**  **40%**

AVERAGE AGE **22**
OLDEST ATTENDEE **52**
YOUNGEST ATTENDEE **17**

98% WOULD RECOMMEND
THE PROGRAMME





Life in Beijing

Visas

Most participants will require a visa to enter China. The LSE-PKU Summer School will provide letters of invitation to support the visa application process in due course once participants have paid their tuition fees in full. Participants are advised to check visa application procedures with the Chinese embassy in their country of residence as early as possible.



Arrival

Participants should generally arrive on 1 August 2020 to give them sufficient time to orient themselves in Beijing and to adjust to any time difference if relevant (GMT +8) prior to registration on 2 August. Please allow sufficient time to acclimatise to Beijing (and the August weather) before the beginning of the Summer School.

Travel to the Campus

PKU Student Helpers will be available at Beijing Capital Airport on 1 August 2020 to welcome participants and assist them in finding transport to their destination. The PKU Student Helpers will be clearly visible on arrival, wearing LSE-PKU Summer School t-shirts and holding LSE-PKU Summer School signs. The PKU student helpers also speak fluent English and provide a friendly welcome for anyone new to China or to Beijing.

If you will be arriving on a different date, further information about how to find the PKU campus and how to get from the airport to PKU will be included in the pre-departure handbook sent to confirmed participants.

Travel within Beijing

Peking University is situated in north west Beijing, and has its own stop on Line 4 of the Beijing Subway. The station is located just outside the East Gate of Peking University, at the intersection of Chengfu Road and Zhongguancun North Street, which is very helpful for travel to and from the campus. Again, further information and maps for the campus and the subway will be included in the pre-departure handbook sent to confirmed participants.



Accommodation

For those who would like to stay in accommodation very close to the campus with other LSE-PKU Summer School participants, a number of rooms have been reserved at the Zhongguanxinyuan Global Village which is located opposite the East Gate of Peking University. Single and twin rooms are available and normally cost between £285 and £750 for 14 nights accommodation. The Zhongguanxinyuan Global Village building also includes cafeterias, Wi-Fi and sports facilities. Relevant booking information will be provided to individuals once their tuition fee has been paid in full. Please note that availability is limited and rooms will be allocated in order of bookings received, so early application is advised.

Other accommodation options, to suit all budgets, are available in the ZhongGuanCun and Wudaokou areas close to campus. Private accommodation of a basic but comfortable standard is likely to cost around £750 for 14 nights. It is recommended that participants budget approximately £350 for meals and other additional expenses during the LSE-PKU Summer School, although this will vary depending on individuals' preferences and what other activities they may undertake during the programme.



Registration

Registration will take place on the PKU campus on the afternoon of Sunday 2 August 2020. Participants will be asked to check and sign their registration forms, and will also be given a pack of information relating to the LSE-PKU Summer School, including reading packs where appropriate.



Orientation

Following registration, the LSE-PKU Summer School will provide a free orientation and welcome. This provides a great opportunity for students and staff to meet each other in a more informal environment before courses begin the following day. Tours of the campus will also take place to help students locate the relevant teaching buildings, library, shops and cafeterias on campus, as well the East Gate of Peking University subway station.



Social events

While participants often make social plans with their course fellows after classes have finished each day, the LSE-PKU Summer School also arranges social and sightseeing events for the weekend in the middle of the programme, as well as a number of extra-curricular activities over some of the afternoons and evenings during the programme including two interactive roundtable events and a visit to either the Great Wall section at Mutianyu, The Temple of Heaven, or the Forbidden Palace (transportation via air-conditioned coaches). These events are optional and can be booked

during registration in Beijing. An additional charge for some of the extra-curricular activities is payable locally and the destination of the weekend trip is weather dependant.

On the final evening of the programme (Friday 14 August), we also invite all LSE-PKU Summer School participants (staff and students) to attend a gala dinner at a local hotel. This is a wonderful opportunity to celebrate the achievements of the Summer School, and also to say goodbye (or perhaps, "see you again next year"!) to all of the friends you have made in Beijing.





Health and personal insurance

Please note that the LSE-PKU Summer School does not provide any health or personal insurance cover on your behalf, and nor is any cover provided through the Zhongguancun Global Village.

Although problems are rare, please ensure that you have health and personal insurance cover that is sufficient for the whole period that you will be in China, and sufficient to cover any theft or medical emergency which may arise. Copies of this insurance documentation may be lodged with the LSE-PKU Summer School office on arrival, in case a need to consult them arises.



Extending your stay

Many participants take the opportunity to arrange private travel or other activities in Beijing/China or elsewhere in Asia either before or after the LSE-PKU Summer School. Given the intensive nature of the programme, there is little free time during the LSE-PKU Summer School to visit all of the places of interest you may wish to visit. Arranging some additional time to explore Beijing and China outside the dates of the programme is consistently a top recommendation from previous participants, so please bear this in mind when making your travel arrangements.



Admission criteria

The LSE-PKU Summer School is a university-level programme and accepts applications from university students and professionals from all over the world.

There is no minimum grade requirement for entry, but applicants should be prepared to actively participate in a rigorous, intensive academic programme run by two leading research and teaching universities. It is expected that participants will engage with the extensive reading list as required by their course and contribute fully to class discussions.

Students who complete their High School studies in 2020 and hold a confirmed offer to begin university in 2020 may also apply.



Proficiency in English

As the LSE-PKU Summer School is delivered in English, it is essential that all participants have a good standard of English language to enable them to fully participate in the programme and interact with their classmates.

We appreciate that applicants may show their English ability in a range of ways, such as:

- Native speaker of English
- Experience of studying in English at university level*.
- Achieving the minimum score in one of the following language certificates:

TOEFL (internet based)

107 or above (including 25 in each component)

IELTS

7.0 or above (including 7 in all components)

CAE

With grade B or better or 185 points overall and a minimum of 185 points in each individual component.

CPE

With grade C or better or 185 points overall and a minimum of 185 points in each individual component.

Pearson Test of English (Academic) (PTEA)

Academic test with a score of 65 in all four components.

*If you have studied in an English speaking institution, or have taken courses taught at your university in English (excluding English language courses) you may meet our requirements without having to supply one of the above certificates. Evidence of this will either need to be included on a transcript or letter from your university.

Prerequisites

Some LSE-PKU Summer School courses at 200- or 300- level have specific prerequisites listed in the course descriptions, whilst others suggest (but do not require) particular academic backgrounds. Applicants for a course where prerequisites are in place should ensure that the documentation they provide with their application clearly indicates how their previous study meets this requirement.





Fees and payments



Application fee

A non-refundable £50 application fee applies to all applications, and is paid by credit/ debit card online through the secure **LSE Online Store**. Application fees must be paid before an application can be submitted.

Tuition fee

The fees for 2020 have not been confirmed yet so please refer to **our website** for updates. The 2019 tuition fee for taking one course on the LSE-PKU Summer School was as below:

2019 Fees	Student rate*	Standard rate
Tuition fee with "Early Bird" discount	£1,325	£1,600
Tuition fee without discount	£1,600	£1,900
Tuition Fee with "Early Bird" discount and Pre-sessional Chinese Language Course	£1,775	£2,050
Tuition Fee without discount and Pre-sessional Chinese Language Course	£2,050	£2,350

*The student rate is available to current full-time university and high school students. Professional participants who are also alumni of LSE or PKU (including the LSE-PKU Summer School or the LSE-UCT Summer School) are also able to take advantage of the student rate.

Please note that the tuition fee does not include the cost of travel, accommodation or other living costs.

Tuition fee payment

Tuition fees must be paid in order to secure a place on the LSE-PKU Summer School. The payment must be received by the deadline given on the offer letter, usually four weeks from the date of offer, or the offered place may be made available to another applicant. These timescales may be shortened closer to the start of the LSE-PKU Summer School.

Tuition fees are paid online by credit or debit card through the secure LSE Online Store, or, exceptionally, by invoice to a third party sponsor organisation. Full receipts are provided for all payments.

Under no circumstances will a participant be permitted to attend the LSE-PKU Summer School if their fees have not been paid in full in advance.

Course cancellation policy

In the event that an LSE-PKU Summer School course is cancelled, participants registered for that course will be offered a place on an alternative course of their choice, or a full refund of their tuition fees. Registered participants will be informed as early as possible if a course is at risk of cancellation, and by 31 May 2020 at the latest.



How to apply

Instructions

All applications should be submitted through the online application form. Find out more [here](#).

An application fee is payable with each application. Due to the intensive nature of the programme, applicants select one academic course only, but may also attend the Pre-Sessional Chinese Language Course if they select that option too.

More details about the application form and the documents required are available [here](#).

Please note that students based in China may wish to apply through our [Beijing office](#). Receipt of your application will be acknowledged within five working days.

A decision will normally be made within ten working days.





About LSE and PKU

The London School of Economics and Political Science is one of the foremost social science universities in the world. Founded in 1894, it is a specialist university with an international intake and a global reach. Its research and teaching span the full breadth of the social sciences and from its location in the heart of London, LSE engages with the city, the UK and the world. 39 past or present world leaders have studied or taught at LSE, and 19 Nobel prize winners in economics, peace and literature have been either LSE staff or students.

The institutional partnership between LSE and PKU has been developing since 2003 and now includes two double degrees, student mobility, joint research, executive training and the long-running LSE-PKU Summer School.

Both institutions aim to form partnerships with a number of high-quality universities across the world in order to broaden their academic reach

by creating innovative opportunities for students and promoting world-class research dealing with problems and issues that are relevant on a national and international scale.

Peking University is China's oldest and most prestigious university, and is internationally recognised as the leading institution of higher education in the country. Its campus, known as Yan Yuan (the gardens of Yan) is one of the most beautiful in China.

Established in 1898, PKU now has a total enrolment of over 46,000 students. The university has effectively combined research on important subjects with the training of personnel with a high level of specialised knowledge and professional skill. It strives not only for improvements in teaching and research work, but also for the promotion of interaction and mutual promotion among various disciplines.

