



ISSUE 2: ACCOMMODATION

London is a fantastic city to live in, with attractions for everyone—be it live music, shopping, museums, or sports. LSE halls of residence will put you at the heart of life in London and all it has to offer. LSE guarantees a place in our halls of residence for all first year undergraduate students, provided you submit your application before the deadline.

Did you receive our previous newsletter? If not, please find a copy [here](#).

ACCOMMODATION: GETTING STARTED

It is best to ensure you have familiarised yourself with the information provided in your [offer guide](#) (pages 25-28), as well as the information available on the Accommodation [website](#). LSE has a variety of halls available, each with their own defining characteristics. You may also be interested in the Intercollegiate Halls of Residence which are run by the University of London. Information regarding these halls are listed on our [website](#).

LSE Accommodation offers shared or private rooms, and catered or self-catered living. There are also a variety of contract lengths available—depending on whether you wish to stay over the Christmas and Easter vacation periods. Our residences offer a supportive environment for those living away from home for the first time, providing a pathway to independence and establishing networks of friends that last a lifetime.

HOW TO APPLY

Applications are now open. All applications must be submitted via our online application portal, Hallpad. You can find a link [here](#). You must register for an account before proceeding with your application. Using your unique LSE student ID number, you'll be able to login, submit and check the progress of your application, and more.

All applications should be made before 30 June 2018 to benefit from our guarantee of an offer of accommodation for all first year undergraduates. Students who make LSE their insurance choice should make their accommodation application along with all other applicants by 30 June 2018. Offers of accommodation are not made unless, or until, an insurance place becomes firm.

Please be assured that new undergraduate students are the highest priority when it comes to making accommodation offers and allocating spaces (with the exception of students with medical requirements).



QUICK LINKS:

[Info for Offer Holders](#)

[Term Dates 2018/19](#)

[Financial Support](#)

[Fees and Student Finance](#)

[Accommodation](#)

[Disability and Wellbeing](#)

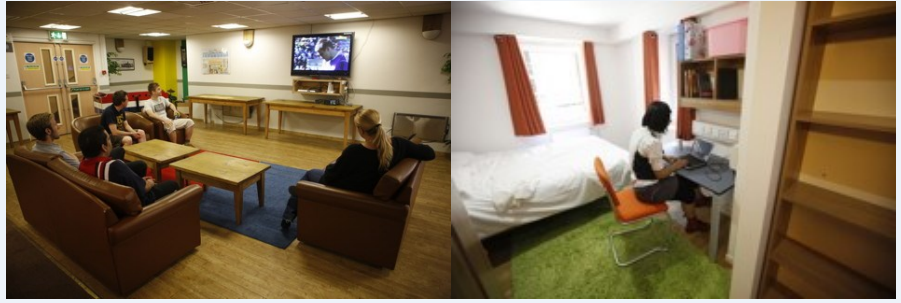
[LSE Blogs](#)

[FAQs](#)





ACCOMMODATION COSTS



Fees for LSE halls will vary depending on the particular residence you choose. This can include factors such as whether you have chosen an en-suite room, a catered facility, or the location of the building. Please find a breakdown of the costs associated with each residence [here](#).

LSE is pleased to announce the introduction of our Accommodation Bursary, which is designed to support students from lower household incomes with the cost of their LSE accommodation. Anyone wishing to be considered for this scheme should submit their accommodation application, via Hallpad, before **30 May 2018**. More information can be found [here](#).

MEDICAL REQUIREMENTS AND EXCEPTIONAL CIRCUMSTANCES



LSE welcomes applications from students from all backgrounds, including applications from those with specific medical requirements, disabilities and other exceptional circumstances.

All first year undergraduate applicants are guaranteed an offer of accommodation. If you declare one of these circumstances in your application form, the Residential Services Office will work in conjunction with [Disability and Wellbeing Service](#) to consider your application and make you the most appropriate offer possible.

UPCOMING DATES:

30 May 2018: Deadline to apply for the Accommodation Bursary

1 June 2018: Deadline for UK and EU students to submit their applications for LSE Scholarships.

30 June 2018: Accommodation application deadline for all students.

1 August 2018: Deadline for verification of previous qualifications and English language qualifications.

Student Video Dairies:

Follow new students' journeys from Welcome Week to summer exams, as they settle into LSE Life and explore London .

This month's featured video is by Jack who talks about making friends in his first year. See Jack's video and more [here](#).

CONTACTING THE ACCOMMODATION TEAM



If you have any queries or concerns relating to accommodation, you should contact our Residential Services team. Please ensure you include your LSE student ID number in your correspondence.

EMAIL: accommodation@lse.ac.uk

TELEPHONE: +44 (0)20 7955 7531.

IN PERSON:

3.02 Saw Swee Hock Student Centre
Houghton Street
London WC2A 2AE

EXPLORING LONDON: OUTSIDE OF ZONE TWO



It's often thought that most Londoners shudder at the thought of leaving the confines of central London. So we thought we would cast the net wide and recommend some interesting day trips that could be undertaken outside of Zone 2, for those who are brave enough.

You could start close to home with a visit to the historic Highgate Cemetery. Highgate is just one of the 'Magnificent Seven' cemeteries built in response to ongoing public health problems in the nineteenth century. Paid tours will take you around some of the more stunning examples of architecture, as well as famous individuals from the past hundred years.

If this doesn't capture your imagination, you might prefer a visit to Crystal Palace Park where you can walk amongst Benjamin Waterhouse Hawkins' famous dinosaur sculptures. During the summer, you can enjoy a daytrip to Brighton and explore the historic pier before relaxing on the beach. The Royal Pavilion, famous for its Indo-Saracenic architecture, dominates the area and is home to many items on loan from the Royal Family.

Continuing the royal connection, Windsor Castle is just a train ride away and is one of the largest inhabited castles in the world and is the official residence of The Queen. You can also enjoy visiting some classic country pubs, should this take your fancy.

And of course, who could resist a daytrip to the Harry Potter Studios located just north of London in Watford. This is a must-do for any Potter obsessed individual. You can walk amongst the film sets, try riding a broomstick and see incredible artwork used for the series.