



Dear Student,

Welcome to our June newsletter which is given entirely over to careers.

If you have missed any of our previous newsletters, you can find them [here](#). Over the next few months we will continue to send you updates via these newsletters to help you prepare for your arrival at LSE.

Kind regards,

Graduate Admissions Office

LSE CAREERS

[LSE Careers](#) is here to help guide and support you throughout your time at LSE. We can help at every stage of your career planning, from thinking about your career for the first time to applying for jobs. We also provide opportunities where you can meet employers you're interested in working for.

Our services cater for the diverse LSE student makeup, keeping undergraduates and postgraduates in mind as well as UK and international students, people with previous job experience, and those looking to change careers. And no matter where you want to work, we can support you. We also offer bespoke services for students with disabilities and PhD students, including dedicated careers consultants.

Quick links

- [Graduate Admissions](#)
- [Previous newsletters](#)
- [Offer Pack \[PDF\]](#)
- [Amendments to Offer pack](#)
- [Department contacts](#)
- [Term dates](#)
- [LSE for You](#)
- [FAQs](#)
- [Careers](#)
- [Graduate Destinations](#)
- [LSESU](#)
- [CMA](#)
- [Programme and Course information](#)

Notes and Dates for the Diary

Apply for **Accommodation** as soon as possible to ensure you have the most choice - applications close on 31 July.

There is no official deadline to accept your

Before you begin your journey at LSE, here's a helpful video to help you find out more about who we are and what we can do for you.

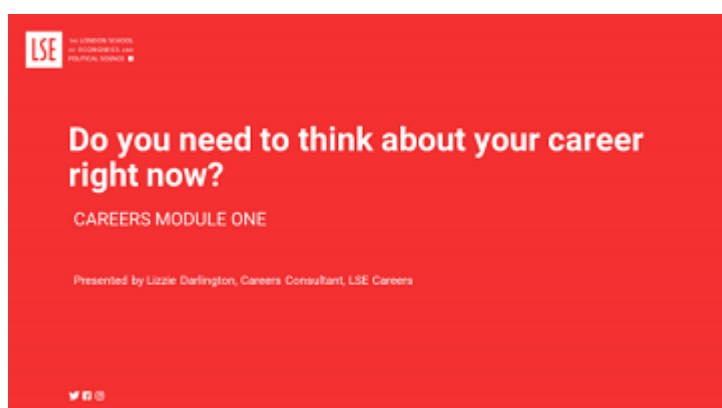


Careers modules to help you

Whether you're new to LSE and London, or have worked, studied or lived in the city previously, starting your masters can often be a busy time and it can be difficult to know when to start thinking about your career and how to go about it.

To help you transition to university life, we've created modules to introduce you to career planning, familiarise you with the UK recruitment process and highlight all that LSE Careers has to offer. Each module contains videos, resources and further information to get you thinking about how we can support you during your time at LSE and after.

Careers module one



In this first module we'll be exploring how to balance your studies with your career planning, when to start thinking about your career and the types of roles you may be applying for.

offer, although we ask, if possible, that you respond within 6 weeks, to help us plan ahead. If you can't take up your place, letting us know early may free up a space for another applicant.

News from around LSE

See the links below for some of our featured content from this month:

Video of the month:

[Are cryptocurrencies the future of money?](#) - LSE IQ Episode 15



LSE News:

[LSE ranked in global top 10 for employer reputation](#)

"LSE was ranked in the top 4% of global universities"

Events:

[The Crisis of Global Politics: lessons from continental philosophy.](#)

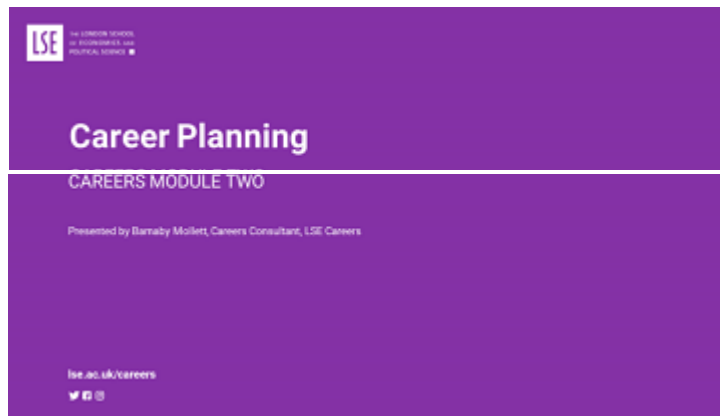
Monday 09 July 2018
6:30pm to 8:00pm

Hosted by LSE IDEAS

Can the work of the great European philosophers help solve Europe's problems today?

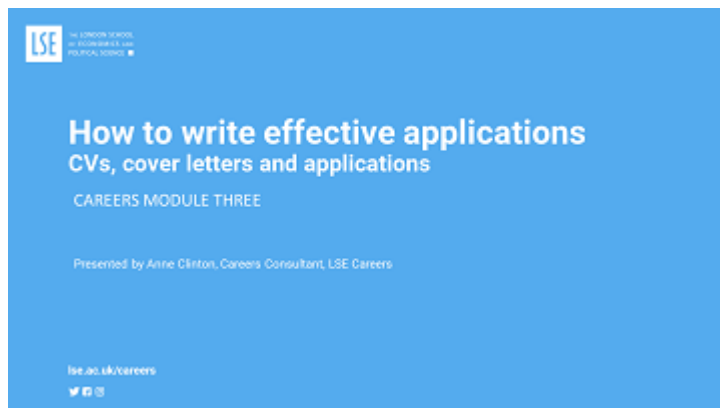
At this event, scholars discuss how the ideas of thinkers such as Heidegger, Arendt, Anders, and Adorno can be applied to populism, climate change, and artificial intelligence.

Careers module two



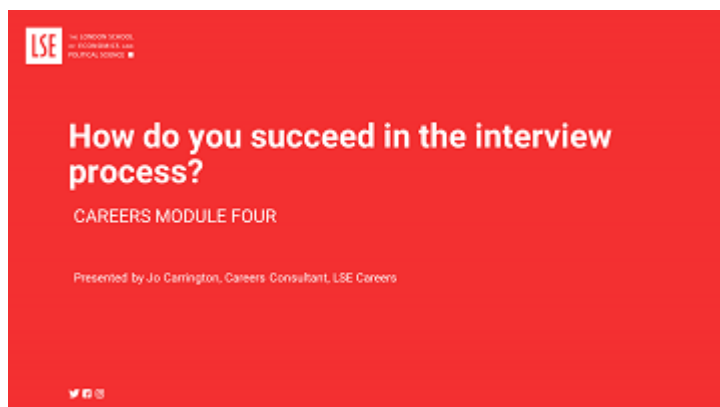
Before you start planning, it's important to know what your strengths and values are. This module will help you evaluate your skills and signpost you to resources to help you explore sectors and roles.

Careers module three



What are employers looking for in applications and how can you make yours stand out from the crowd? In this module we'll answer these questions and provide advice on constructing strong CVs, cover letters and applications.?

Careers module four



You've applied and secured an interview, but what types of questions might you be asked and how do you prepare for them? This module will provide support and top tips for succeeding in your interview.

Featured Research:

[Browse the LSE Festival research competition gallery.](#)

Don't forget to follow our social media channels!



Future newsletter topics

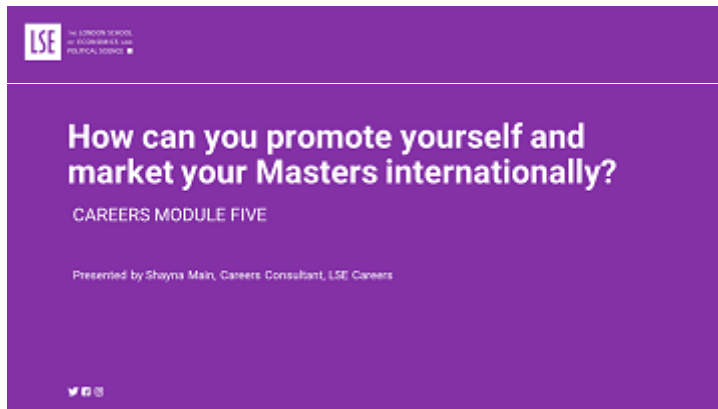
July - Course Choice/Volunteering Special

August - Registration and Welcome

September - Final checks and 'What I wish I'd known' (a collaboration with LSESU and the Student Services Centre)

Please click [here](#) to suggest topics for future newsletters

Careers module five



Networking is important both during and after your time at LSE, but who should you connect with and how can you get the most out of these connections?

Careers module six



What can we do for you? This module will provide an overview of our services, events and the support we can offer to you.

We look forward to welcoming you to LSE and if you have any questions before you join us, please do get in touch.

Keeping in touch with us:

Website: lse.ac.uk/Careers

Blog: blogs.lse.ac.uk/careers/

Twitter: [@LSECareers](https://twitter.com/LSECareers)

LinkedIn: [LSE-Careers](https://www.linkedin.com/company/lse-careers)

Facebook: [/LSECareers](https://www.facebook.com/LSECareers)

Call: 020 7955 7135

Email: careers@lse.ac.uk



REMINDER FOR LSE UNDERGRADUATES

Just a reminder that if you are currently an LSE Undergraduate and are holding an offer for a Postgraduate programme, please be advised that the Graduate Admissions Office will receive notification of your results at the same time you do.

Once you have received your results, **you do not need to send them to us**, we will view them internally and action accordingly.

For all offer holders - We know that lots of you are sending in documents at the moment to meet your conditions, provide evidence, and to obtain your CAS letters - we are processing everything as quickly as possible in the order we receive it. If you wish to check what date we are up to in our processing, don't forget to check our [current processing times webpage](#).

[Unsubscribe / Manage email preferences](#)

CONNECT WITH LSE



Study



Meet us



Life at LSE



London School of Economics
and Political Science

Houghton Street

London WC2A 2AE

www.lse.ac.uk

+44 (0)20 7955 6613