



THE LONDON SCHOOL
OF ECONOMICS AND
POLITICAL SCIENCE

Offer Holder News

June 2019



View previous editions

Dear Student,

Welcome to our June newsletter which is given entirely over to careers.

If you have missed any of our previous newsletters, you can find them [here](#). Over the next few months we will continue to send you updates via these newsletters to help you prepare for your arrival at LSE.

Kind regards,

Graduate Admissions Office

LSE CAREERS

[LSE Careers](#) is here to help guide and support you throughout your time at LSE. We can help at every stage of your career planning, from thinking about your career for the first time to applying for jobs. We also provide opportunities where you can meet, network and learn from employers and alumni from different sectors and industries.

Our services cater for the diverse LSE student makeup, keeping undergraduates and postgraduates in mind as well as UK and international students, people with previous work experience, and those looking to change careers. And no matter where you want to work, we can support you. We also offer bespoke services for [students with disabilities](#) and [PhD students](#), including dedicated careers consultants.

Over the next few weeks, you'll be asked a couple of questions about your career readiness, previous work experience and your career preferences. By sharing your thoughts and experiences with us you'll help shape our careers activities and ensure we're working with you to create, plan and deliver events and support that is right for you.

Before you begin your journey at LSE, here's a helpful video to help you find out more about who we are and what we can do for you.

Quick links

- [Graduate Admissions](#)
- [Previous newsletters](#)
- [Offer Pack \[PDF\]](#)
- [Amendments to Offer pack](#)
- [Department contacts](#)
- [Term dates](#)
- [LSE for You](#)
- [FAQs](#)
- [Careers](#)
- [Graduate Destinations](#)
- [LSESU](#)
- [CMA](#)
- [Programme and Course information](#)

Notes and Dates for the Diary

Apply for **Accommodation** as soon as possible to ensure you have the most choice - applications close on 31 July.

There is no official deadline to accept your offer, although we ask, if possible, that you respond within 6 weeks, to help us plan ahead. If you can't take up your place, letting us know early may free up a space for another applicant.

News from around LSE

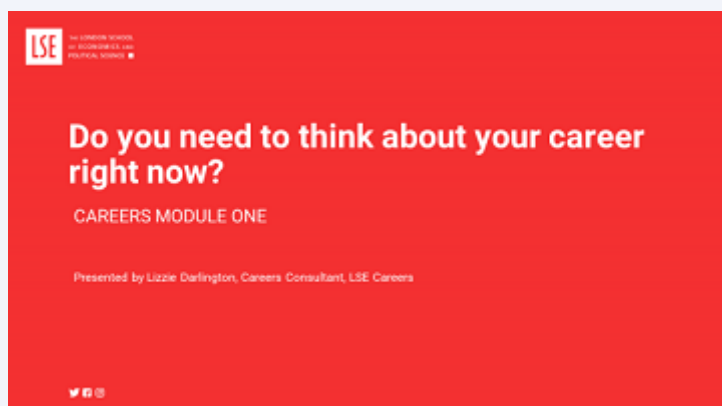


Modules to help you

Whether you're new to LSE and London, or have worked, studied or lived in the city previously, starting your masters can often be a busy time and it can be difficult to know when to start thinking about your career and how to go about it.

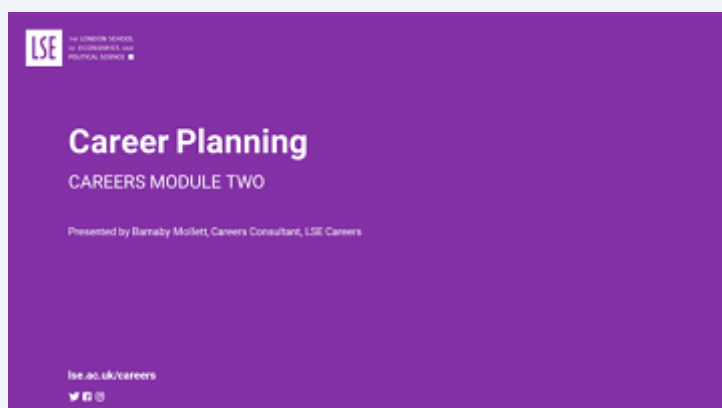
To help you transition to university life, we've created modules to introduce you to career planning, familiarise you with the UK recruitment process and highlight all that LSE Careers has to offer. Each module contains videos, resources and further information to get you thinking about how we can support you during your time at LSE and after.

Module one:



In this first module we'll be exploring how to balance your studies with your career planning, when to start thinking about your career and the types of roles you may be applying for.

Module two:



See the links below for some of our featured content from this month:

Video of the month:

[Is gender equality possible?](#) - LSE IQ Episode 25



LSE News:

LSE professor named one of 100 Most Influential People in Gender Policy 2019

Naila Kabeer, Professor of Gender and Development at LSE, has been named as one of the 100 most influential people in gender policy in 2019.

Events:

Will AI Make Thinking Obsolete?

Monday 01 July 2019
2:00pm to 3:15pm

Hosted by the London School of Economics and Political Science and BBC Radio 4

Would you rather be diagnosed by a doctor or an algorithm? Would you trust a marriage prediction app to choose your life partner? Would you rather be judged by a person or a machine? Join Professor Michael Sandel - BBC Radio 4's "Public Philosopher" - to debate the ethics of AI, big data, and the future of human decision making.

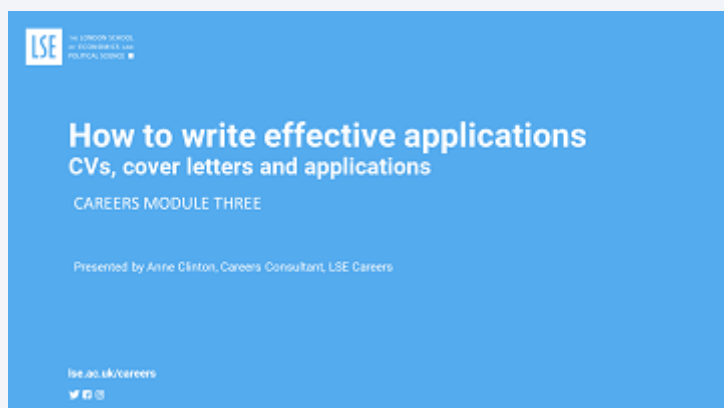
Featured Research:

Big ideas

Why do some societies experience regular revolutions which transform their political and economic

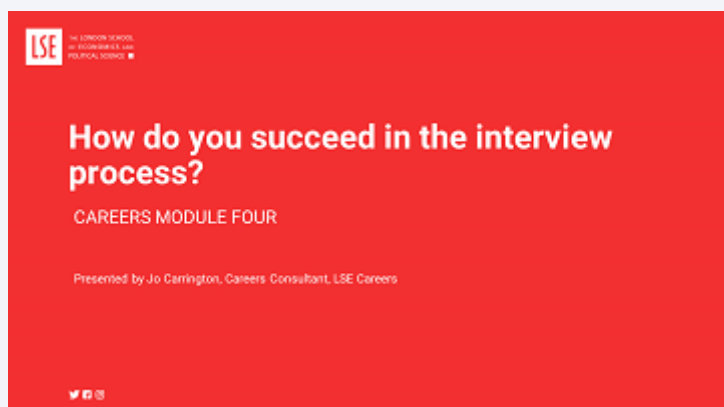
Before you start planning, it's important to know what your strengths and values are. This module will help you evaluate your skills and signpost you to resources to help you explore sectors and roles.

Module three:



What are employers looking for in applications and how can you make yours stand out from the crowd? In this module we'll answer these questions and provide advice on constructing strong CVs, cover letters and applications.

Module four:



You've applied and secured an interview, but what types of questions might you be asked and how do you prepare for them? This module will provide support and top tips for succeeding in your interview.

Module five:



systems, while others remain relatively stable?

Don't forget to follow our social media channels!



Future newsletter topics

July - Course Choice/Volunteering Special

August - Registration and Welcome

September - Final checks and 'What I wish I'd known' (a collaboration with LSESU and the Student Services Centre)

Please click [here](#) to suggest topics for future newsletters

Networking is important both during and after your time at LSE, but who should you connect with and how can you get the most out of these connections?

Module six:



What can we do for you? This module will provide an overview of our services, events and the support we can offer to you.

We look forward to welcoming you to LSE and if you have any questions before you join us, please do get in touch.

Keeping in touch with us:

Website: lse.ac.uk/Careers

Blog: blogs.lse.ac.uk/careers/

Twitter: [@LSECareers](https://twitter.com/LSECareers)

LinkedIn: [LSECareers](https://www.linkedin.com/company/lse-careers)

Facebook: [/LSECareers](https://www.facebook.com/LSECareers)

Call: 020 7955 7135

Email: careers@lse.ac.uk



REMINDER FOR LSE UNDERGRADUATES

Just a reminder that if you are currently an LSE Undergraduate and are holding an offer for a Postgraduate programme, please be advised that the Graduate Admissions Office will receive notification of your results at the same time you do.

Once you have received your results, **you do not need to send them to us**, we will view them internally and action accordingly.

For all offer holders - We know that lots of you are sending in documents at the moment to meet your conditions, provide evidence, and to obtain your CAS letters - we are processing everything as quickly as possible in the order we receive it. If you wish to check what date we are up to in our processing, don't forget to check our [current processing times webpage](#).

[Unsubscribe / Manage email preferences](#)

CONNECT WITH LSE



Study

Meet us

Life at LSE

**London School of Economics
and Political Science**

Houghton Street

London WC2A 2AE

www.lse.ac.uk

+44 (0)20 7955 6613

All Rights Reserved. © Copyright 2016.