

Double Degree Newsletter



A warm welcome from your double degree admissions manager, Vali

Registering as an LSE Double Degree student

By now you should be registered with LSE. If you aren't it might be that there are still pending requirements that haven't been met. If you are unsure, please check your [Graduate Applicant portal](#) or email the [Double Degree team](#)

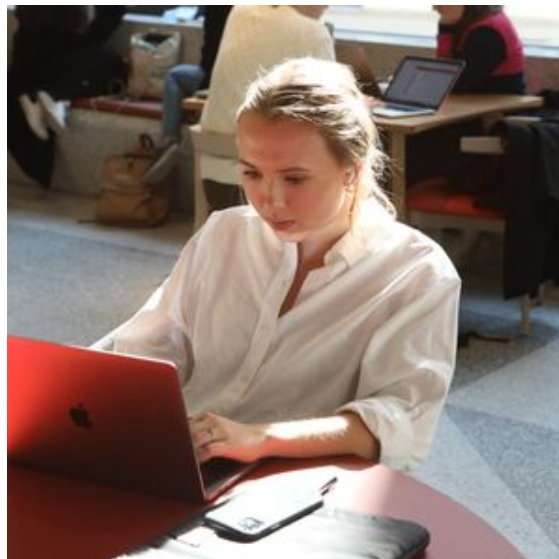
We will be inviting you to a Zoom session where we will have presentations from the various services LSE provides to students. You will be able to ask questions and hopefully, we will have the answers you are looking for. This will take place on **Friday 26 January 2024 12:00-14:00 UK time** and an agenda will be sent to you all shortly. If you are unable to make this meeting, please be assured that it will be recorded so that you don't miss out. We will see you there!

Meeting English Language conditions

As a dual degree student, your current institution will report on your progress in the summer directly to LSE. However, you may have an English language condition on your offer; this will be detailed in your offer letter from LSE and reflected in your Graduate Applicant portal.

If you are required to provide an IELTS ([or equivalent](#)) score as part of an English language condition, you should arrange to take the test as soon as possible. Once you have your results, please [email them to us](#), including the TRF number detailed on your result certificate.

Official evidence of your English test scores must be received before you will be able to register with us.



Funding and Financial Support

As a dual degree student joining LSE in 2024/25, you may apply for financial support for the 2023/24 session from LSE's [Graduate Support Scheme](#) and other LSE Scholarships.

Applying for Funding

If you wish to apply, please use the PDF form which will be sent to you electronically by the end of January by the [Financial Support Office](#) (FSO) and return a completed copy by email before the deadline of 30 June 2024. Completed versions will need to be electronically signed and dated before submitting to FSO for consideration. Detailed instructions on how to submit the form will be included in the email from the Financial Support Office.

We aim to provide a decision on each application on a rolling basis and usually within 4 weeks of receipt, although it may take longer during our busier times in May and June. Supporting documentation may be requested should an award be made. Notification will be sent by email, please ensure you provide a reliable email address. Unfortunately, we cannot give out decisions via the phone.

You may find reading the [guide](#) for applicants using our online application form useful.

Awards

Awards from the Graduate Support Scheme range from £5,000 to £15,000. All awards are made on the basis of financial need. Please note that if your funding shortfall far exceeds the maximum award value, it is very unlikely that we will be able to offer you any support. Our awards are intended to supplement funding from other sources or to close a funding gap; we do not provide full awards. Unfortunately submitting an application carries no guarantee that it will be successful.

If you fulfil the criteria for any other available LSE Scholarships for 2024 entry, your application will be automatically considered, decisions on these scholarships will also be sent by email, with all decisions released by the end of July 2024.

Find out more

There is more information about the Graduate Support Scheme and other LSE scholarships on our website.

Unfortunately, dual degree students cannot apply online. Please contact the [Financial Support Office](#) if you have any queries on the scheme.

Postgraduate Master's loan

If you're starting a master's degree, you could get a Postgraduate Master's Loan of up to £12,167 (2023 amount) to help with course fees and living costs

Watch our campus tour to get a feel of LSE life



Finding Accommodation

Coming to live in London, and finding the right accommodation here, may seem daunting at first. However, once you have established what your needs are, and what options are available, it shouldn't be long before you've found a home in London with LSE.

LSE Residential Halls

Halls are a great way to meet a real mix of people, from the UK and overseas. Each year we allocate over 4,000 places in Halls, across 14 different locations in central London (nearly all within walking distance of LSE!).

With a broad range of different rooms available, several factors may affect your choice. Choose between self-catered, rooms with or without an en-suite bathroom, and shared rooms to studio flats. All options include utility bills, internet access and contents insurance.

We aim to open bookings for places in Halls for 2024/25 in March 2024 and the booking guarantee deadline is 9 June 2024 – remember to book early! [View and compare the options](#). [Sign up for an alert](#) to be notified when bookings are open.

Accommodation fees

Fees for LSE Halls vary depending on the particular hall you choose. Please check our [Fees table](#) (2024/25 Fees will be available online shortly before bookings open) before deciding which hall is best for you. A schedule of payment dates will be made available in your license agreement, but generally, fees are due on a termly basis, by the end of the second week of each term.

Private Accommodation

Many of our students choose to live in privately rented housing. It may be difficult to arrange this sort of accommodation before arriving in London, as you should inspect any property before committing to rent it. We advise you allow at least two weeks to find a suitable place to live.

Please check our [private housing webpage](#) to see resources available to LSE students and a wide range of advice on how to find accommodation in London.

Contacting Residential Services

If you would like to get in touch with LSE Residential Services Office, they would be happy to provide you with advice on LSE Halls and searching for private accommodation.

The Residential Services Office is open from 9am to 5.30pm, Monday to Friday.

[Contact the Residential Services Office](#)

Accessing online facilities

In order to make sure you have access, you will be required to activate your LSE IT account. Please follow the instructions carefully.

Once you have activated your LSE IT account, you will be able to access various LSE online facilities such as the LSE library online resources, using your new LSE email address and the password that you have created.

To access Library online resources, you may use the LSE Library catalogue, Library Search. You can find it here https://librarysearch.lse.ac.uk/discovery/search?vid=44LSE_INST:44LSE_VU1

Do not sign into the option that appears on the Library Search page itself. Instead, use the search box to find what you are looking for. Once found, click onto the record for more

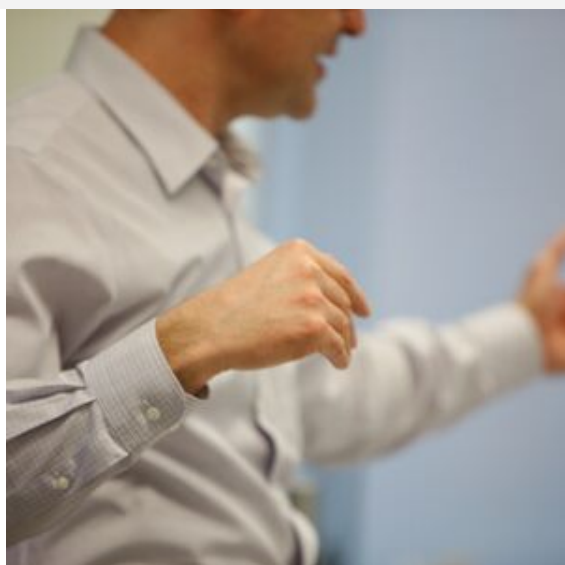
information to appear and click the relevant online links in the record to get to what you need. You will then be prompted at this point to sign in with your LSE email and password, once you are leaving the catalogue page to go to the resource you require.

If you should experience any difficulty in accessing any resources our Library colleagues can be contacted at library.enquiries@lse.ac.uk or you can open a chat session with us when you are on Library Search. When contacting the library, it would be helpful if you gave as much information as possible (e.g. your LSE ID number if you have it, email address and what you are trying to access, including the link/URL, and a screenshot of an error page if possible).

Visa advice

Non-UK students will need visa to enter and study at LSE. Information on who requires a CAS (Certificate of Acceptance of Studies) in order to apply for a Student visa is provided by [Student Advice and Engagement Team](#)

Your cas number will be issued once we have progression confirmed by the partner university, this usually happens in June. If you have any queries regarding the visa application process, or if you will require a visa, you can contact the Student Advice and Engagement Team directly by using their [web query form](#).



Tips for London life

Many students worry about their finances when embarking on a new course of study, but there are many ways to save money while you are here in London!

In addition to student discounts at high street shops and cinemas (many will offer this on production of a valid NUS or ISIC card), there are many other ways to enjoy all that London has to offer without overspending on your budget.

18+ Student Oyster card

As a student at LSE, you will be eligible for a student oyster card for travelling by public transport. This helps you save 30% off adult travel cards and bus/tram passes.

Second-hand books The Gilded Acorn, based on campus, offers a range of discounted and second-hand course books.

Discount voucher sites

Many websites offer discounts for students, including deals on eating out, reduced accommodation and sale items. Try: studentbeans.com, savethestudent.org, myvouchercode.com

London discounts

Londoners can enjoy discounts on a range of culture, cuisine and shopping in the city. Check out daily deals websites such as [Wowcher](https://www.wowcher.co.uk) and [Deal Zippy](https://www.dealzippy.co.uk) to see offers.



All Rights Reserved. © Copyright 2023.

**London School of Economics
and Political Science**

Houghton Street
London WC2A 2AE
www.lse.ac.uk