

Remember you can access the archive of newsletters on our [website](#).
February's focus topic is **Finding Accommodation**.

FINDING ACCOMMODATION

Coming to live in London, and finding the right accommodation here, may seem daunting at first. However, once you have established what your needs are, and what options are available, it shouldn't be long before you've found a home in London with LSE.

LSE Residential Halls

Halls are a great way to meet a real mix of people, from the UK and overseas. Each year we allocate over 4,000 places in Halls, across 17 different locations in central London (nearly all in walking distance of LSE!).

With a broad range of different rooms available, several factors may affect your choice. Choose between catered and self-catered, rooms with or without an en-suite bathroom, and shared rooms to studio flats. All options include utility bills, internet access and contents insurance.

Applications for places in Halls are open now and will close on 31 July 2017 – remember to apply early to ensure you have more choice!

Residential halls at a glance

Click [here](#) to go to 360° tours of our residential halls where you can view and compare the options!

Quick links

Graduate Admissions

Access earlier editions of the newsletter

Offer Pack [PDF]

Amendments to Offer Pack

Department contacts

Term dates 2017/8

Application Tracker

FAQs

Careers

Graduate Destinations

CMA

Postgraduate course and programme information for 2017/8



Private Accommodation

Many LSE students live in privately rented housing and commute to the School every day. It may be difficult to arrange this sort of accommodation before arriving in London, as you should inspect any property before committing to rent it. We would advise you to allow a minimum of two weeks to search for accommodation (students with children should allow longer). We've put a guide together to get you started: [Finding private housing](#)

All UK landlords are now required by law to check that tenants have a right to live in the UK. Students searching for private housing should be prepared to show prospective landlords their documentation. Accepted documents include:

- **Passport** or national identity card from Great Britain, EEA or Switzerland.
- A full **birth/adoption certificate** **AND** a **CAS (Confirmation of Acceptance for Studies) letter** confirming the holder's acceptance on a current course of studies.
- If an international student, a **visa/Biometric Residence Permit** to show that you are allowed to stay in the UK for the relevant time period.

You are not advised to send any original documents via post. Bring the documents with you in person, and ask the landlord to make a copy of the document while you are present, and to return the original document to you. If you require further information on what you will be required to provide to landlords, please contact private.housing@lse.ac.uk for advice.

LSE halls of residence, and those provided by its partner organisations (**urbanest**, **Sanctuary Housing** and the **University of London**), are **exempt** from the above legislation, and students will **not** need to provide additional documentation to secure a place in any of these **halls**.

[LSE Studentpad](#) allows you to conduct some research before you visit LSE, allowing you to access lists of properties, make contact with other LSE students also searching for accommodation (via message boards), and to view a wide range of advice on how to find accommodation in London.

LSE also has short-term temporary accommodation from August if you need to stay in an LSE hall while searching for a flat. Short term accommodation can be booked at lsevacations.co.uk

ACCOMMODATION FEES

Fees for LSE Halls vary depending on the particular hall you choose.

You may wish to check our [2017-18 Table of Fees](#), before deciding which hall is best for you.

A schedule of payment dates will be made available in your licence agreement, but generally, fees are due on a termly basis, by the end of the second week of each term.



CONTACTING RESIDENTIAL SERVICES

If you would like to get in touch LSE Residential Services Office, they would be happy to provide you with advice on LSE Halls and searching for private accommodation.

The Residential Services Office is open from 9am to 5.00pm, Monday to Friday

In person:

3.02 Saw Swee Hock Student Centre
Houghton Street
London WC2A 2AE

By email:

accommodation@lse.ac.uk

By phone:

+44(0)20 7955 7531

NOTES AND DATES FOR THE DIARY

Apply for the Graduate Support Scheme as soon as possible – at the very latest by **26 April 2017**.

Make sure your address is kept up to date in LSE for You – you don't want to miss any important communications from us!

NEWS FROM AROUND LSE

The Minds of Whales

What is it like to be a whale? How do they think and what do they feel? How are their social groups structured, and how do whale 'cultures' arise? And how has human thought and human culture been influenced by interaction with whales? In this dialogue, two internationally recognized whale experts — prize-winning author Philip Hoare and marine biologist Luke Rendell — discuss the inner lives of whales.

Thursday 02 March 2017 6:30pm to 8:00pm
Hosted by The Forum
<http://bit.ly/2kZixLw>

Find out what makes our students and professors feel #partofLSE?

Our Facebook and Instagram channels are showcasing experiences of teaching and learning around LSE, from both student and tutor perspectives. Search [#partoflse](#)

Catch up with our Podcasts

Have you listened to any of our podcasts yet?

We have a huge [collection](#) of podcasts and videos from LSE's programme of public lectures and events, and an archive of more than 600 public podcasts and videos dating from 1990 to 2006 in the [LSE Digital Library](#).

From [Drug Policies Beyond the War on Drugs?](#) to [A Renewed Case for the Union](#), and [Thomas Leeper on Trump's Inauguration & the Start of His Presidency](#) to [Student video diaries 2016-2017](#), there really is something for everyone.

Student Loan Company reminder

The UK Government have set up a loan scheme for students domiciled in England and the EU. (Students domiciled in Wales, Scotland and Northern Ireland need to check their devolved authorities to see what they are offering). The scheme is open now and eligible students can borrow up to £10,000 to be used for fees or living costs. Click [here](#) for more information.

Alumni feature in Forbes' 30 under 30 ones to watch

Ten LSE alumni and two current students have been featured in the 2017 Forbes 30 under 30 lists published last month, a select group of young breakout talents and innovators making genuine strides in their different areas of work.

[Meet](#) the next generation of inspiring LSE alumni who are actively transforming their professional fields and reshaping the world.

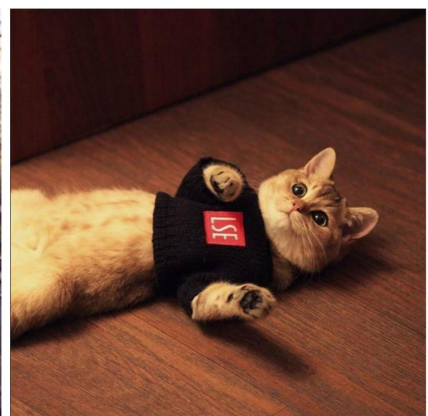
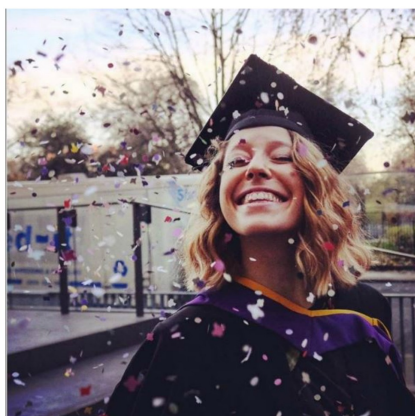
Graduate Offer Pack

If you haven't yet received your offer pack, read the online version [here](#).

It includes information on meeting your conditions, supplying your documents, and much more.



Check out some of the latest posts on our Instagram account!



Please click [here](#) to suggest topics for future newsletters