



THE LONDON SCHOOL  
OF ECONOMICS AND  
POLITICAL SCIENCE ■

## Double Degree Newsletter | June 2018



Dear Student,

This newsletter will give you information about applying for a visa, our Careers office, LSE Alumni, Life in London. For more in depth information, please see the [Offer Pack](#).

We also keep an archive of all previous newsletters on the [offer holders](#) website if you miss any.



**A warm welcome from your Double Degree team, Vali and Dan!**



This guidance is for students on one of our double/joint degree programmes. The advice varies depending on whether you will be spending your first or second year at LSE. Check that the question applies to your individual circumstances.

**I am doing the MSc Double Degree in Global Media and Communications and will spend my first year at LSE. Who will issue my CAS and when can I apply for my visa?**

If you are spending your first year of your degree at LSE, your CAS will be issued by Graduate Admissions. You will be able to apply for your Tier 4 visa a maximum of three months before your sponsorship start date as shown on your CAS.

**If I am at LSE for my first year, will I have a Tier 4 visa for the full two years of my programme?**

No. LSE will only sponsor you under Tier 4 for the time you are expected to be studying at the LSE. We are unable to keep you sponsored on a Tier 4 visa for the second year of your programme.

**I am attending LSE in the second year of my degree. Who will issue my CAS and when can I apply for my visa?**

If you are spending the second year of your degree at LSE, you will need to request a CAS number from the Registry [using the online form](#). Your CAS will not be issued until your first year results have been confirmed by your university to LSE.

It is not possible to issue a CAS with an earlier start date to enable you to come to the UK sooner.

**Where can I apply for my Tier 4 visa?**

You can only apply for a Tier 4 visa in a country you are living in e.g. you have the right of residence. This could either be your home country or the country where you have studied for your first year of your degree.

We are aware that some students may undertake research in a third country over the summer, but there is no flexibility on this rule. You must plan to be able to apply for your Tier 4 visa for LSE in a country where you can submit an application

**Can I come to the UK as a visitor and then apply for Tier 4?**

No, you cannot switch from a visitor visa to a Tier 4 visa in the UK. Your application will be refused and you may be unable to join your programme

**What happens if I interrupt my studies while at LSE?**

If you interrupt your studies, the LSE Student Services Centre will be required to report this to the Home Office/UKVI. This will lead to the curtailment of your Tier 4 visa. Key information can be found on [our web page](#).

### Where can I find information on applying for a Tier 4 visa?

Information on to apply for the Tier 4 visa can be found on our [web pages](#). You should refer to the specific information for Diploma and Masters students. You must read both the guide to applying and the guide to completing the application form to fully understand the process.

### How to contact ISVAT

International Student Visa Advice Team  
Student Services Centre  
London School of Economics and Political Science  
London  
WC2A 2AE

### [Online Query Form](#)

Follow us [@LSE\\_ISVAT](#)

Why not give us [your feedback](#)?

### What happens if I do not progress from my first year of studies at LSE?

If you fail to progress at the end of your first year at LSE, the Visa Compliance Team will submit a report to the Home Office/UKVI. This will curtail your visa. Information on how to return for retakes or deferred assessments can be found on our [web pages](#).

### I'm studying the joint programme with the London School of Hygiene and Tropical Medicine. Who sponsors my Tier 4 visa?

LSHTM will sponsor your Tier 4 visa, but we will be required to monitor your attendance. We will inform LSHTM if there are attendance issues as part of our Tier 4 Sponsor Licence Holder requirements.

---

[LSE Careers](#) is here to help guide and support you throughout your time at LSE. We can help at every stage of your career planning, from thinking about your career for the first time to applying for jobs. We also provide opportunities where you can meet employers you're interested in working for.

Our services cater for the diverse LSE student makeup, keeping undergraduates and postgraduates in mind as well as UK and international students, people with previous job experience, and those looking to change careers. And no matter where you want to work, we can support you. We also offer bespoke services for students with disabilities and PhD students, including dedicated careers consultants.

### Career planning

The [career planning](#) section of our website, will give you some tips on how to begin planning and will point you to the most appropriate information and resources for whatever stage you're at.

You can also discuss your options with one of our friendly and dedicated careers consultants in a one to one [careers appointment](#). And don't worry, if you're unsure about what you want to do layer on in your LSE career - [we can still help!](#)

## Experience and employability

If you want to gain some work experience, learn and develop your skills or earn some money whilst you're studying, our varied programme of [skills seminars](#) can help! We also advertise opportunities including internships, such as our exclusive [Parliamentary Internships Scheme](#), and hundreds of [part-time jobs](#), on and off campus, which fit in with your studies.

There's also the opportunity to get involved in volunteering during your time at LSE. As well as being a great way to give back to the community, it can be beneficial to both your personal and professional development. The [LSE Volunteer Centre](#) can help you find the right role for you and also advertises one-off and long-term opportunities in the UK and abroad.

## Finding a job

We work with thousands of employers to give you a huge range of career opportunities in the UK and internationally which are listed on LSE CareerHub, our online careers portal. Here you can find full-time, part-time, graduate, internship, voluntary and experienced hire opportunities.

Throughout the year we also run [sector-specific careers fairs](#) and employer networking events and presentations where you can talk to and gain insight from recruiters and company representatives.

If you're interested in starting your own business, LSE Generate offers a skills development programme and networking events from which you can learn, market test ideas, and identify key relationships within the immediate and wider entrepreneurial community.

We can also help you find a job in an organisation that promotes entrepreneurship as one of its core values.

We also subscribe to a range of digital [resources](#) which can help you: work

## What LSE alumni go on to do

Popular careers chosen by LSE graduates include: NGOs and development, consultancy, research and education, finance, journalism, publishing, and the public sector and government.

If you're researching a course you're passionate about but aren't too sure where it could lead, our [graduate destinations](#) page can give you some great ideas. Take a look at what students who studied in your prospective department have gone on to do, or search by degree course.

As LSE alumni you still have access to [LSE Careers](#) for up to five years after you complete your course.

### LSE Careers online:

Website: [lse.ac.uk/Careers](https://lse.ac.uk/Careers)

Blog: [blogs.lse.ac.uk/Careers](https://blogs.lse.ac.uk/Careers)

Twitter: [@LSECareers](https://twitter.com/LSECareers)

LinkedIn: [LSE Careers](https://www.linkedin.com/company/lse-careers)

Facebook: [LSECareers](https://www.facebook.com/LSECareers)

on your interview techniques, practice psychometric tests, find roles internationally and gain further insight an information on a particular sector.

### Applications and interviews

When you are ready to start applying for jobs, our website has information on [applications](#), [interviews](#), [assessment centres and psychometric tests](#) to give you an idea of what's expected and how to succeed.

Our careers consultants can check your [CVs, cover letters and applications](#) and we also run practice interviews and mock assessment centres to help you improve your technique before the day.

### Contact LSE Careers:

Opening times:

Monday-Friday 9:30am-5pm

Thursday 9:30am-8pm

Call: 020 7955 7135

Email: [careers@lse.ac.uk](mailto:careers@lse.ac.uk)



### LSE ALUMNI NETWORK

Postgraduate study with LSE is an investment in your future, not only in terms of the knowledge and experience you'll gain during your time with us, but also through the connections and networks you will build while studying with us.

Whether you stay in the UK, or move to a different country, and regardless of the professional career path you choose, you will always find the support of the LSE alumni community.

Through LSE Alumni, you can get involved with an alumni group in your local area, or join a special interest group to focus on a particular business sector, allowing you to network with fellow professionals.

Visit the [LSE Alumni website](#) for more details about the benefits of being an LSE Alumni.

---





## LIFE IN LONDON: SPORTS

Whether you're an avid football supporter, or a keen swimmer, there's a huge range of opportunities to get active and enjoy sports while you're living in London.

### Sports facilities at LSE

There are a range of [sports clubs and societies](#) to get involved in during your time at LSE, from Athletics, Capoeira and Fustal, to Rowing, Squash, Yoga and more. Whether you're a beginner or you want to compete in one of LSESU's teams, the sports societies cater for every level.

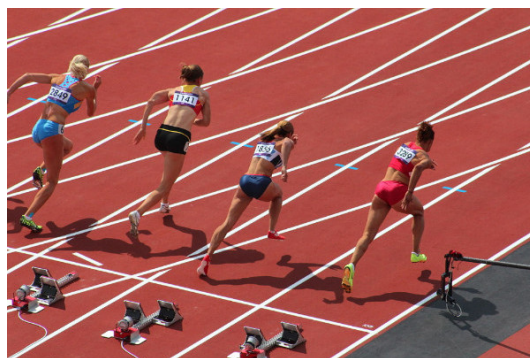
There is a [state of the art gym](#) on campus which offers exercise equipment and classes. In addition, there is a badminton court in the Old Building, and netball and tennis courts are available nearby in Lincoln's Inn Fields.

LSE also has its own sportsground in New Malden, just a short train ride away. [The Berrylands sportsground](#) provides for a variety of outdoor sports such as football, cricket, netball and rugby.

[Find out more on sports facilities on-campus and nearby](#)

### Join the Athletics Union

The LSE Students' Union has a very active [Athletics Union](#), with over 2,300+ members. The AU aims to provide sport for all, no matter your ability level; so if



## Beyond LSE

London boasts a huge range of state-of-the-art sports facilities, many of which provide discounts for students. You can even visit the 2012 Olympic Park and take advantage of the [excellent facilities](#), previously used by Olympic athletes. Alternatively, summer is the perfect time to visit London's many famous and highly affordable outdoor [lido swimming pools](#).

### Sports Venues

Regular sporting events take place throughout the year in London, and if you're a sports fan, you might like to consider taking in a game.

Many famous sports venues also offer tours, or discounted tickets for students. Why not explore:

[Tennis at Wimbledon](#)

[Rugby at Twickenham](#)

[NFL at Wembley](#)

[Cricket at Lord's](#)

[Arsenal FC](#)

[Chelsea FC](#)

### Gaming

If you're more into gaming than sports (or both if you have enough free time!), LSESU also have a [Gaming Society](#) and a [Board Game Society](#).

Whether you play Magic: The Gathering, love a bit of Risk, or fancy taking part in a Halo tournament, there is bound to be something for you!

you are interested in getting involved with sports at LSE, you should be sure to visit their stall at the Freshers' Fayre!

LSE sports teams play regular competitive matches in the [BUCS](#) leagues, and since the AU hosts a huge [range of clubs](#) from Football to Floorball, Karate to Kite Surfing... there's sure to be something for everyone.

Joining societies is one of the best ways to make friends with similar interests to you, so check out the [LSESU Societies list](#) and begin planning what you will be signing up for when you get here.

---

## NEWS FROM AROUND LSE

### Featured Public Event

#### [The Crisis of Global Politics: lessons from continental philosophy.](#)

Monday 09 July 2018 6:30pm to 8:00pm

*Hosted by LSE IDEAS*

Dr Benjamin Martill

#### **Can the work of the great European philosophers help solve Europe's problems today?**

At this event, scholars discuss how the ideas of thinkers such as Heidegger, Arendt, Anders, and Adorno can be applied to populism, climate change, and artificial intelligence.

Josefin Graef ([@graef\\_j](#)) is a Dahrendorf Postdoctoral Fellow at the Hertie School of Governance in Berlin.

Scott Hamilton is a Banting Postdoctoral Fellow and Balsillie School of International Affairs in Waterloo, Canada.

Sebastian Schindler is a Research Associate at the Goethe University in Frankfurt.

Elke Schwarz ([@elkeschwarz](#)) is a Lecturer in International Politics at the University of Leicester.

Uta Staiger is Executive Director of the UCL European Institute and Pro-Vice Provost (Europe) at University College London.

Benjamin Martill is a Dahrendorf Fellow in Europe after Brexit at LSE IDEAS.

LSE IDEAS ([@lseideas](#)) is LSE's foreign policy think tank. We connect academic knowledge of diplomacy and strategy with the people who use it.

[Attend this event on Facebook.](#)

---

## Research Highlights

[Deep Impact](#): "We are governed, our minds are moulded, our tastes formed... largely by

men we have never heard of." This is how Edward Bernays, often called the father of public relations, described the power of information.

Bernays' concept of public relations, as a process driven by powerful organisations seeking to gain favour for their products, services or ideas, has dominated the field since his book ***Propaganda*** was published in 1928.

But a new book by Dr Lee Edwards of the Department of Media and Communications argues for a change in how the public relations is studied. Instead of focusing on the organisation driving the communications process, Dr Edwards argues that the prevalence of public relations in modern economies demands a wider understanding of how it affects our society and culture. [Read more...](#)

---



Don't wait until you get to LSE to start making friends. Use the links below to join our social networks to connect with students and alumni, hear about up and coming events, and see what life on campus is really like. We can't wait for you to become **#PartofLSE**.

