



THE LONDON SCHOOL
OF ECONOMICS AND
POLITICAL SCIENCE ■

Double Degree Newsletter | June 2017



Dear Offer holder,

This newsletter will give you information about applying for a visa, our Careers office, LSE Alumni, Life in London. For more in depth information, please see the [Offer Pack](#).

We also keep an archive of all previous newsletters on the [offer holders](#) website if you miss any.



A warm welcome from
your Double Degree
team, Vali and Dan!

[LSE Careers](#) is here to help guide you through the careers maze with a comprehensive range of careers and employment services.

We can help at every stage of your career planning, from thinking about your career for the first time to applying for jobs and speaking to employers you want to work for.

We cater our services to match LSE student makeup, keeping [postgraduates](#) in mind as well as UK and international students, [people with previous job experience](#), and those looking to [change careers](#). And no matter where you want to work, we can support you. We also have bespoke services for [students with disabilities](#) and [PhD students](#), including dedicated careers consultants.

Career planning

The [career planning](#) section of our website, especially our [Career Builder](#) tool, will give you some tips on how to begin and point you to the most appropriate information and resources for whatever stage you're at. You can also discuss your options with a careers consultant in a [careers appointment](#) (you can book up to four per term). And don't worry if you don't know what you want to do later on in your LSE career – [we can still help](#)!

Learn about [different employment sectors and options](#) on our website and come along to our [seminars](#), [panel discussions](#) and "Meet an Alum" events to find out more about alumni career paths and what working in different industries and roles is like.

Experience and employability

Want to gain some work experience, learn or develop a skill or earn some money while you're studying? We run a range of [skills seminars](#) and advertise internships, including our exclusive [Parliamentary Internships Scheme](#), and hundreds of [part-time jobs](#), on and off campus, which fit in with your studies.

Alongside being a great way to give back to the community, volunteering can be very beneficial to both your personal and professional development. The [LSE Volunteer Centre](#) can help you find the right role for you and also advertises one-off and long-term opportunities in the UK and abroad.

Finding a job

We work with thousands of employers to give you a huge range of career opportunities in the UK and internationally which are listed on LSE CareerHub, our exclusive jobs board. We advertise full-time, part-time, graduate, internship, and experienced hire opportunities.

We also run [sector-specific careers fairs](#) and hundreds of employer networking events and presentations where you can talk to recruiters and company representatives.

If you want to start your own business, LSE Generate offers a [skills development programme](#) and [networking events](#) from which you can learn, market test ideas, and identify key relationships within the immediate and wider entrepreneurial community.

We can also help you find a job in an organisation that promotes entrepreneurship as one of its core values. LSE Careers subscribes to lots of [exclusive resources](#) which can help you: work on your interview techniques, practice psychometric tests, get an international job, or get information about particular sectors.

Applications and interviews

When you start applying for jobs, our website has information on [applications](#), [interviews](#), [assessment centres and psychometric tests](#) to give you an idea of what's expected and how to succeed.

We also run mock assessment centres and our careers consultants can check your [CVs](#), [cover letters and applications](#) and run practice interviews with you so you can improve your technique before the day.

What LSE alumni go on to do

Popular careers chosen by LSE graduates include: NGOs and development, consultancy, research and education, finance, journalism, publishing, and the public sector and government.

If you're researching a course on a topic you're passionate about but have no idea where it could lead, our [graduate destinations](#) page can give you some great ideas. Take a look at what students who studied in your prospective [department](#) have gone on to do, or [search by degree course](#). You might also be interested in the [graduate profile of the week](#) section on our blog, for a more in-depth look into how alumni got into their current careers.

We also contact graduates six months after they graduate as part of the [Destinations of Leavers from Higher Education \(DLHE\) survey](#) and in our most recent survey, 90.5% of LSE graduates were in employment or further study.

As LSE alumni you still have access to [LSE Careers](#) for up to five years after you complete your course.

LSE Careers online:

Website: lse.ac.uk/Careers

Blog: blogs.lse.ac.uk/Careers

Twitter: [@LSECareers](https://twitter.com/LSECareers)

Facebook: [LSECareers](https://facebook.com/LSECareers)

Contact LSE Careers:

Opening times:

Monday-Friday 9:30am-5pm

Thursday 9:30am-8pm

Call: 020 7955 7135

Email: <mailto:careers@lse.ac.uk>



LSE ALUMNI NETWORK

Postgraduate study with LSE is an investment in your future, not only in terms of the knowledge and experience you'll gain during your time with us, but also through the connections and networks you will build while studying with us.

Whether you stay in the UK, or move to a different country, and regardless of the professional career path you choose, you will always find the support of the LSE alumni community.

Through LSE Alumni, you can get involved with an alumni group in your local area, or join a special interest group to focus on a particular business sector, allowing you to network with fellow professionals.

Visit the [LSE Advancement website](#) for more details about the benefits of being an LSE Alumni.



This guidance is for students on one of our double/joint degree programmes. The advice varies depending on whether you will be spending your first or second year at LSE. Check that the question applies to your individual circumstances.

I am doing the MSc Double Degree in Global Media and Communications and will spend my first year at LSE. Who will issue my CAS and when can I apply for my visa?

If you are spending your first year of your degree at LSE, your CAS will be issued by Graduate Admissions. You will be able to apply for your Tier 4 visa a maximum of three months before your sponsorship start date as shown on your CAS.

If I am at LSE for my first year, will I have a Tier 4 visa for the full two years of my programme?

No. LSE will only sponsor you under Tier 4 for the time you are expected to be studying at the LSE. We are unable to keep you sponsored on a Tier 4 visa for the second year of your programme.

I am attending LSE in the second year of my degree. Who will issue my CAS and when can I apply for my visa?

If you are spending the second year of your degree at LSE, you will need to request a CAS number from the Registry [using the online form](#). Your CAS will not be issued until your first year results have been confirmed by your university to LSE.

It is not possible to issue a CAS with an earlier start date to enable you to come to the UK sooner.

Where can I find information on applying for a Tier 4 visa?

Information on to apply for the Tier 4 visa can be found on our web pages. You should refer to the specific information for Diploma and Masters students. You must read both the guide to applying and the guide to completing the application form to fully understand the process.

Contact us:

ISVAT: lse.ac.uk/isvat

Where can I apply for my Tier 4 visa?

You can only apply for a Tier 4 visa in a country you are living in e.g. you have the right of residence. This could either be your home country or the country where you have studied for your first year of your degree.

We are aware that some students may undertake research in a third country over the summer, but there is no flexibility on this rule. You must plan to be able to apply for your Tier 4 visa for LSE in a country where you can submit an application

Can I come to the UK as a visitor and then apply for Tier 4?

No, you cannot switch from a visitor visa to a Tier 4 visa in the UK. Your application will be refused and you may be unable to join your programme

What happens if I interrupt my studies?

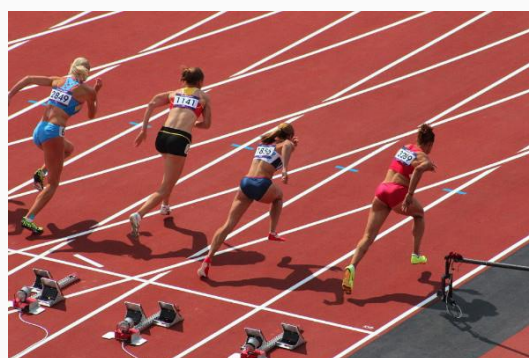
If you interrupt your studies, the Registry will be required to report this to the Home Office. This will lead to the curtailment of your Tier 4 visa. More information can be found on our web page about changes to your circumstances.

What happens if I do not progress from my first year of studies at LSE?

If you fail to progress at the end of your first year at LSE, the Registry will submit a report to the Home Office. This will curtail your visa. Information on how to return for retakes or deferred assessments can be found on our web pages.

I'm studying the joint programme with the London School of Hygiene and Tropical Medicine. Who sponsors my Tier 4 visa?

LSHTM will sponsor your Tier 4 visa, but we will be required to monitor your attendance. We will inform LSHTM if there are attendance issues as part of our Tier 4 Sponsor Licence Holder requirements.



LIFE IN LONDON: SPORTS

Whether you're an avid football supporter, or a keen swimmer, there's a huge range of opportunities to get active and enjoy sports while you're living in London.

Sports facilities at LSE

On campus, you will be able to find squash courts, badminton courts and an exercise studio. This is in addition to our [gym](#), boasting a range of Technogym and Olympic standard strength performance equipment.

Further from campus, LSE has 9.5 hectares of [playing fields](#) in New Malden, Surrey.

Amenities include football and rugby pitches, cricket squares and a tennis court.

Join the Athletics Union

The LSE Students' Union has a very active [Athletics Union](#), with over 2,000+ members. The AU aims to provide sport for all, no matter your ability level; so if you are interested in getting involved with sports at LSE, you should be sure to visit their stall at the Freshers'

Fayre!

LSE sports teams play regular competitive matches in the [BUCS](#) leagues, and since the AU hosts a huge [range of clubs](#) from Football to Floorball, Karate to Kite Surfing... there's sure to be something for everyone.

Beyond LSE

London boasts a huge range of state-of-the-art sports facilities, many of which provide discounts for students. You can even visit the 2012 Olympic Park and take advantage of the [excellent facilities](#), previously used by Olympic athletes.

Alternatively, summer is the perfect time to visit London's many famous and highly affordable outdoor [lido swimming pools](#).

Sports Venues

Regular sporting events take place throughout the year in London, and if you're a sports fan, you might like to consider taking in a game.

Many famous sports venues also offer tours, or discounted tickets for students. Why not explore:

[Tennis at Wimbledon](#)

[Rugby at Twickenham](#)

[NFL at Wembley](#)

[Cricket at Lord's](#)

[Arsenal FC](#)

[Chelsea FC](#)

Gaming

If you're more into gaming than sports (or both if you have enough free time!), LSESU also have a [Gaming Society](#) and a [Board Game Society](#).

Whether you play Magic: The Gathering, love a bit of Risk, or fancy taking part in a Halo tournament, there is bound to be something for you!

Joining societies is one of the best ways to make friends with similar interests to you, so check out the [LSESU Societies list](#) and begin planning what you will be signing up for when you get here.

.

NEWS FROM AROUND LSE

Featured Public Event

The Evolution of Global Inequalities: the impact on politics and the economy

Wednesday 05 July 2017 6:30pm to 8:00pm

Hosted by the International Inequalities Institute

Branko Milanovic will discuss the recent evolution in global inequality and focus on the political implications of the important changes in the global distribution of income.

Branko Milanovic ([@BrankoMilan](#)) is Senior Scholar at the Luxembourg Income Study Center and Visiting Presidential Professor, Graduate Center, City University of New York.

Mike Savage ([@MikeSav47032563](#)) is Martin White Professor of Sociology and Co-Director of the LSE International Inequalities Institute.

The [International Inequalities Institute at LSE](#) ([@LSEInequalities](#)) brings together experts from many LSE departments and centres to lead critical and cutting edge research to understand why inequalities are escalating in numerous arenas across the world, and to develop critical tools to address these challenges.

Twitter Hashtag for this event: **#LSEBranko**



Research Highlights

[Picking winners](#): In the US, the 'land of the free', many assume that the government's role in the economy is limited to providing the market's infrastructure and legal framework alongside a modest social safety net.

But a new paper from Professor Robert Wade argues that the free market rhetoric masks a fundamental truth about the American economy — the state has a long

history of economic intervention to direct economic growth.



Don't wait until you get to LSE to start making friends. Use the links below to join our social networks to connect with students and alumni, hear about up and coming events, and see what life on campus is really like. We can't wait for you to become **#PartofLSE**.



