



THE LONDON SCHOOL
OF ECONOMICS AND
POLITICAL SCIENCE ■



LSE Offer Holders' Day

WEDNESDAY 18 APRIL 2018



Summer
School
1989-2018

30 YEARS

Pre-university
courses available

*University offer required

LSE Summer School

18 June –
17 August
2018

96%

of our 2017 students
would recommend
the LSE Summer
School to a friend.

2017 Summer School
Cohort Survey

lse.ac.uk/summerschool

Welcome to LSE

Congratulations on your offer of admission to LSE! I would like to welcome you to our Offer Holders' Day. We hope that today will give you the opportunity to learn more about LSE and your chosen degree subject at the School. This booklet details the events and activities taking place during the Offer Holders' Day, including times and locations. If you require any further information please ask one of our Student Ambassadors, who will be happy to assist you and provide an insight into student life at LSE, so be sure to ask for their candid opinions!

Please ensure that you (and your guest) register in the New Academic Building when you first arrive at the School. After registration you will be free to enjoy the many Offer Holders' Day events taking place on campus.

I hope that the Offer Holders' Day confirms your decision to study at LSE; the world's leading dedicated social science institution.

Enjoy your day.



Minouche Shafik

Director, LSE





Language
Centre



LSE Language Centre provides a range of language programmes for students, academic staff, alumni and the general public. Over 2,000 people take a course with us every year.

For more information, contact languages@lse.ac.uk or go to our website www.lse.ac.uk/languages

Contents

Welcome to LSE	1
General events and activities	4
General talks	5
Subject Taster sessions	6-7
Plan your day	8-9
Further information	10-11
Accommodation	12-13
Explore the campus	14-16
Local area map	17
LSE campus map	Back cover

Share your #LSEOfferHoldersDay experience:

 @StudyLSE

 @facebook.com/lseps

 @londonschoolofeconomics



ASK AN AMBASSADOR

We have a number of current LSE students working at the Offer Holders' Day as Ambassadors. They will be identifiable by black or white LSE t-shirts. Please ask them if you require directions or have any general questions about the School.



FINDING YOUR WAY AROUND LSE

You can find all LSE buildings using Google Maps or Apple Maps but if you need help just ask one of our Student Ambassadors or look for the grey signs on the corners of our buildings. **The first digit of each room number indicates what floor it's on eg, room 6.02 is on the sixth floor.**

CAMPUS DEVELOPMENTS

Some parts of LSE's campus are currently closed as we develop new state-of-the-art buildings and facilities. We apologise for any inconvenience these works cause, and hope they will not detract from your enjoyment of the day. To find out more, please visit lse.ac.uk/CentreBuildings

General events and activities

REGISTRATION

Ground Floor, New Academic Building (NAB) – Kingsway entrance, 9.30-10am • 10-10.30am • 10.30-11am • 11-11.30am

Please register your attendance at any time during your registration slot. At registration you will receive an LSE wristband which will act as a visitor pass for the day and an LSE bag to help you collect information/literature throughout the day.

WHERE NEXT? Once registered, you are free to explore the campus and attend the full programme of events.

INFORMATION STANDS

LSE LIFE, Library (LRB), 9.30am – 3.30pm

Staff from the departments below will be available throughout the day to answer your questions and provide advice and guidance.

Admissions • Careers • Financial Support • Language Centre • LSE100 • LSE Alumni • LSE LIFE • Residential Services • Summer School

LSE LIBRARY (LRB), LIBRARY INFORMATION DESK:

Meet Library staff and find out more about the resources available to students.

MEET THE STUDENTS

1st Floor, Saw Swee Hock Student Centre (SAW), 11.30am – 3.30pm

This informal drop-in session gives you the opportunity to meet with current students and representatives from LSE's Students' Union and ask them questions about their experiences of studying at LSE.

ACCOMMODATION TOURS

Bankside House and Northumberland House, 11.30am – 4pm

Visit one of our halls of residence. See pages 12-13 for further details.



General talks

INTRODUCTION TO LSE TALK

Old Theatre, Old Building (OLD), 10-10.20am •
10.40-11am • 11.20-11.40am •

12 noon – 12.20pm

This introductory talk from the LSE Admissions team will welcome you to LSE, giving you an overview of the School and the programme of events for the day.

PARENTS' TALK

Sheikh Zayed Theatre, New Academic Building (NAB), 11.30am – 12.15pm • 1.15-2pm

A talk for parents and carers covering living in London and studying at LSE. This session is chaired by LSE support services staff and features a talk by a parent of a current LSE student, sharing their own experiences.

CAREERS TALK

What do LSE graduates do?

Wolfson Theatre, New Academic Building (NAB), 11.30am – 12 noon • 1.30-2pm

LSE Careers guide you through their services and the career opportunities for LSE graduates.

STUDENT LIFE TALK

Old Theatre, Old Building (OLD),
12.30-1pm • 2.30-3pm

A talk from current students about their experiences of studying at LSE and living in London.



Subject Taster sessions

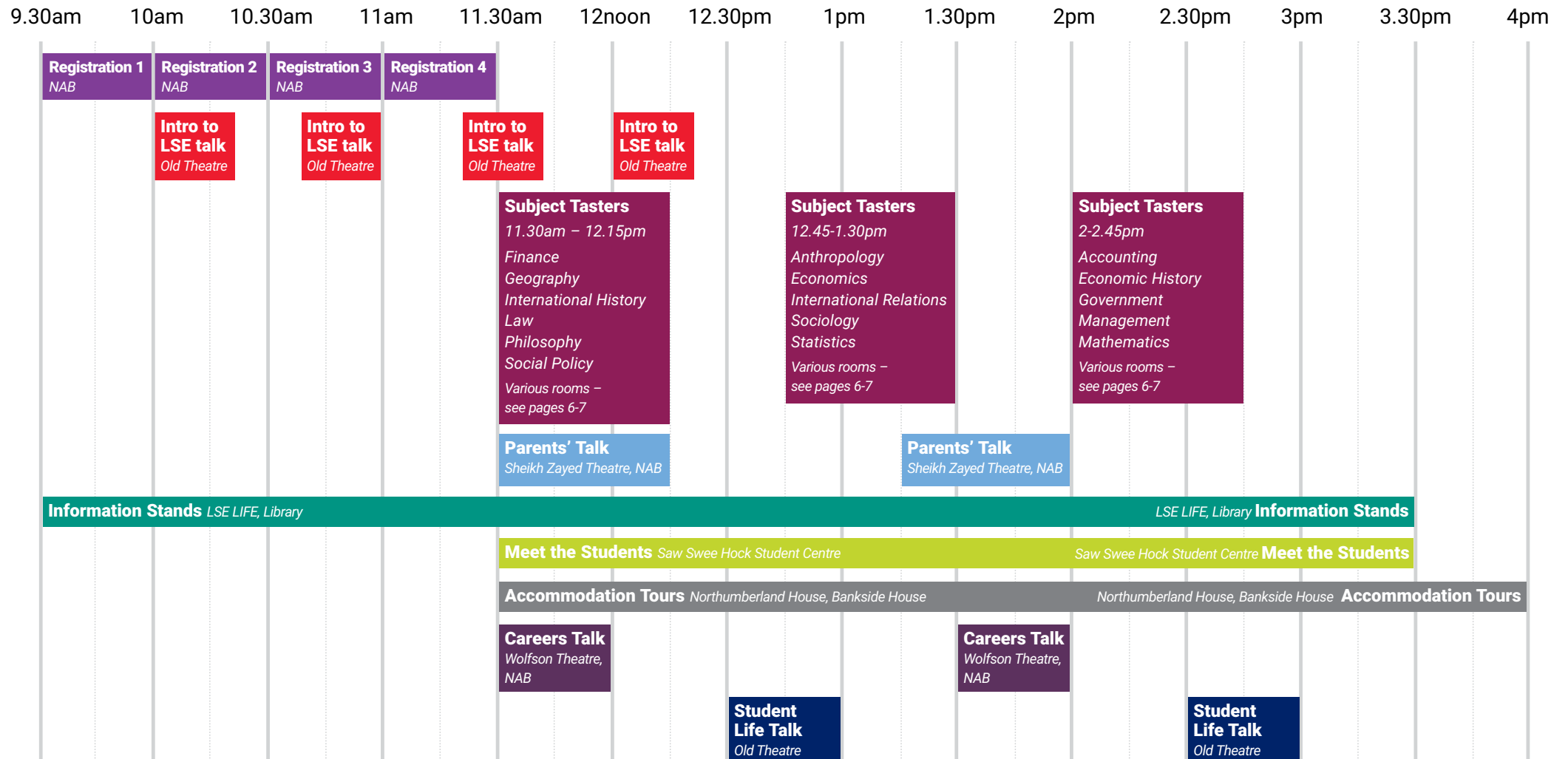
Get a taste of the programme you have applied for in these sessions run by academics in your department. Each session will last approximately 45 minutes and many are followed by additional activities. If you have an offer for a joint programme, you are welcome to attend subject sessions for both/all subject areas.

Due to space restrictions, we can only admit applicants to these talks. Parents and guests can attend the other events taking place at this time, including the Parents' Talk and Information Stands.

Subject	Time	Location
Accounting BSc Accounting and Finance (NN34)	2-2.45pm	Room 3.02, Clement House (CLM)
Anthropology BA Social Anthropology (L601) BSc Social Anthropology (L603) BA Anthropology and Law (ML16)	12.45-1.30pm	Room 2.04, New Academic Building (NAB) Meet students and staff over refreshments after the session
Economic History BSc Economic History (V300) BSc Economic History and Geography (V3L7) BSc Economic History with Economics (V3L1) BSc Economics and Economic History (VL31)	2-2.45pm	Room 4.10, Old Building (OLD) Meet students and staff over refreshments after the session in Room LG.03, Parish Hall (PAR)
Economics BSc Economics (L101) BSc Economics with Economic History (L1V3) BSc Econometrics and Mathematical Economics (L140)	12.45-1.30pm	Hong Kong Theatre, Clement House (CLM) Meet students and staff over refreshments after the session in the Shaw Library, 6th Floor, Old Building
Finance BSc Finance (N300)	11.30am – 12.15pm	Room 3.21, Old Building (OLD) Meet students and staff over lunch after the session
Geography and Environment BA Geography (L702) BSc Geography with Economics (L7L1) BSc Environment and Development (FK84) BSc Environmental Policy with Economics (F9L1)	11.30am – 12.15pm	Room 2.04, New Academic Building (NAB)
Government BSc Government (L230) BSc Government and Economics (LL12) BSc Government and History (LV21) BSc Politics and International Relations (L290) BSc Politics and Philosophy (LV25)	2-2.45pm	Room G.01, Tower One (TW1) Meet students and staff over refreshments after the session in Room 6.02, Clement House (CLM)

Subject	Time	Location
International History BA History (V146) BSc International Relations and History (VL12)	11.30am – 12.15pm Meet students and staff over refreshments after the session in Kinta Alley, Basement, 32 Lincoln's Inn Fields (32L)	Room 2.02, Clement House (CLM)
International Relations BSc International Relations (L250)	12.45-1.30pm Meet students and staff over refreshments after the session	Room 7.02, Clement House (CLM)
Law LLB Bachelor of Laws (M100)	11.30am – 12.15pm	Hong Kong Theatre, Clement House (CLM)
Management BSc Management (N200)	2-2.45pm	Room 2.02, Clement House (CLM)
Mathematics BSc Mathematics and Economics (GL11) BSc Mathematics with Economics (G1L1) BSc Financial Mathematics and Statistics (GN13)	2-2.45pm Meet students and staff over refreshments after the session	Hong Kong Theatre, Clement House (CLM)
Philosophy BSc Philosophy, Logic and Scientific Method (V503) BSc Philosophy and Economics (LV15) BSc Philosophy, Politics and Economics (LOV0)	11.30am – 12.15pm Meet students and staff over refreshments after the session in Room 5.02, Clement House (CLM)	Room 4.02, Clement House (CLM)
Social Policy BSc Social Policy (L400) BSc Social Policy and Economics (LLK1) BSc Social Policy with Government (LL42) BSc Social Policy and Sociology (LL34)	11.30am – 12.15pm Meet students and staff over refreshments after the session	Room 2.03, Parish Hall (PAR)
Sociology BSc Sociology (L301)	12.45-1.30pm Meet students and staff over refreshments after the session in Room 2.19, St Clement's Building (STC)	Room LG.03, Parish Hall (PAR)
Statistics BSc Actuarial Science (N321) BSc Mathematics, Statistics, and Business (G0N0)	12.45-1.30pm	Room 2.02, Clement House (CLM)

Plan your day



FINDING YOUR WAY AROUND LSE

The LSE campus is very compact, so it won't take you long to get to the different activities. You can find all LSE buildings using Google Maps, Apple Maps or the map on the back page of this booklet. If you need help just ask one of our Student Ambassadors or look for the grey signs on the corner of the buildings. **The first digit of each room number indicates what floor it's on eg, room 3.02 is on the 3rd floor.**

Further information

ACCESSIBILITY

LSE aims to create an environment which enables all students to participate fully in university life. All rooms and buildings at the Offer Holders' Day are accessible, and most rooms and lecture theatres are fitted with infra-red hearing systems.

Access guides to the School's buildings are available at [disabledGo.com](http://disabledgo.com)

DISABILITY AND WELLBEING

If you would like to speak to someone about any disability or wellbeing-related issue, please visit the Disability and Wellbeing Service in room 3.02, Tower Three (TW3). The service will be open for private drop-in consultations with offer holders and their guests from 9.30am – 4pm.

Further information can be found on our website: lse.ac.uk/disabledstudents



LSE-PKU Summer School in Beijing, China

6-17 August 2018

REFRESHMENTS

LSE's catering outlets will be open for lunch and refreshments throughout the day:

CAFÉ 54, New Academic Building (NAB).

Take away or eat in sandwiches, wraps, soups, salad, pasta and a selection of hot and cold drinks.

PLAZA CAFÉ, John Watkins Plaza.

Sandwiches, hot and cold snacks and drinks.

LSE GARRICK, Houghton Street/Aldwych.

A variety of hot and cold snacks and a restaurant downstairs.

GEORGE IV, Portugal Street.

The LSE pub, offering traditional cask ales, wines, soft drinks and light meals.

DENNING LEARNING CAFÉ, 1st floor ,

Saw Swee Hock Student Centre (SAW).

Hot pies are a speciality.

WESTON CAFÉ, 6th floor, Saw Swee Hock

Student Centre (SAW).

Enjoy a fresh smoothie or juice and the view from the roof terrace.



Accommodation

The School guarantees accommodation, either in LSE or intercollegiate residences, to all first year undergraduates who apply before the accommodation deadline (30 June 2018). For full details about all of our halls of residence and intercollegiate accommodation, please visit the LSE Residential Services website: lse.ac.uk/accommodation

RESIDENTIAL SERVICES INFORMATION STAND

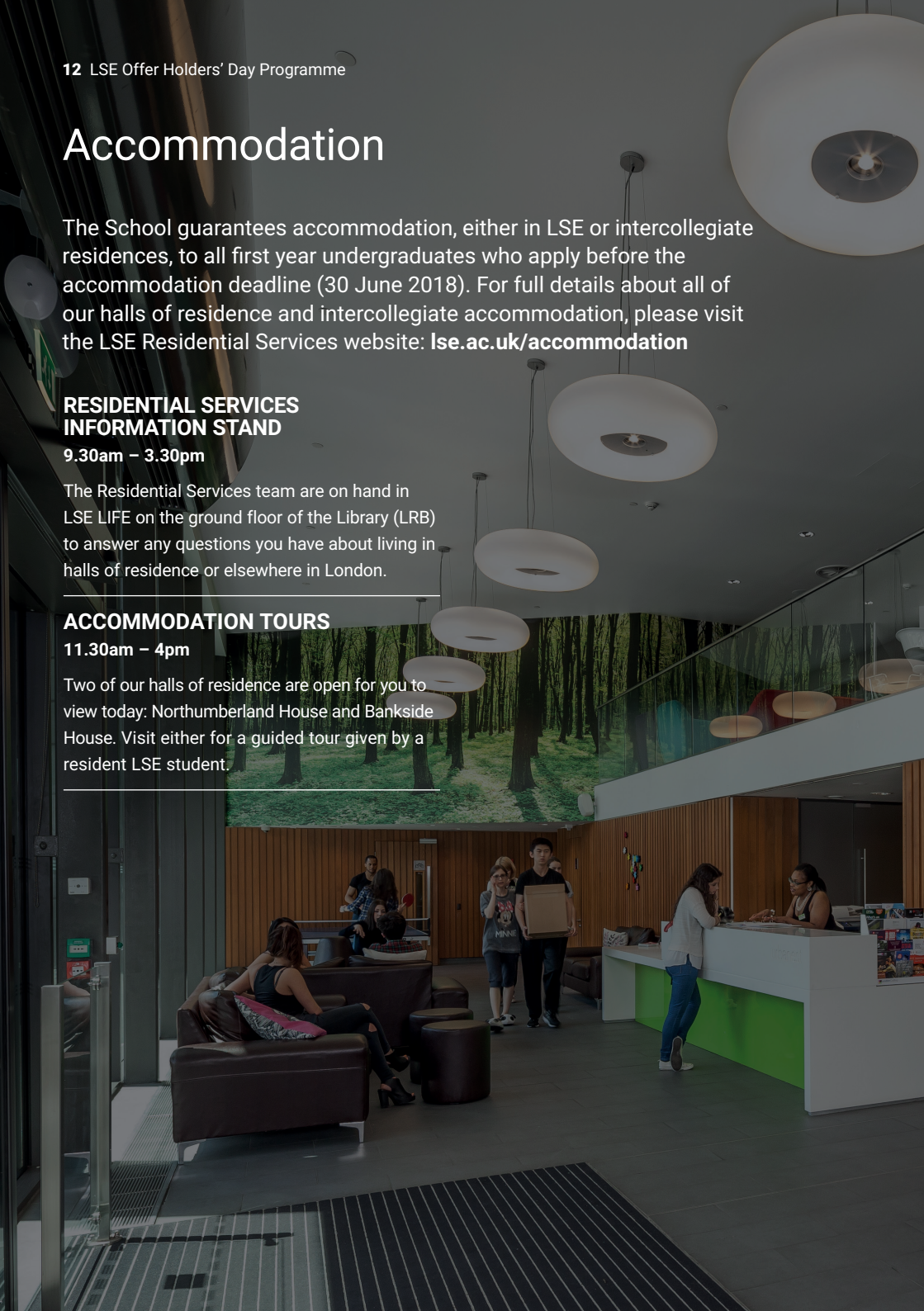
9.30am – 3.30pm

The Residential Services team are on hand in LSE LIFE on the ground floor of the Library (LRB) to answer any questions you have about living in halls of residence or elsewhere in London.

ACCOMMODATION TOURS

11.30am – 4pm

Two of our halls of residence are open for you to view today: Northumberland House and Bankside House. Visit either for a guided tour given by a resident LSE student.





GETTING TO BANKSIDE HOUSE

24 Sumner House,
London, SE1 9JA

Bankside House is near the south bank of the Thames, close to Shakespeare's Globe Theatre and behind the Tate Modern art gallery. You can find Bankside House on Google Maps or Apple Maps. Walking takes about 25 minutes (see map on page 17), or catch bus number RV1. Board the bus outside Somerset House (bus stop S) and travel to Lavington Street (bus stop SQ).



GETTING TO NORTHUMBERLAND HOUSE

Edward VII Rooms, 8A
Northumberland Avenue,
London, WC2N 5BY

Northumberland House is situated just off Trafalgar Square, a short walk away from the Strand, the National Gallery, the West End, Covent Garden and Piccadilly Circus. You can find Northumberland House on Google Maps or Apple Maps, and it is a 15 minute walk from LSE (see map on page 17).



THE LONDON SCHOOL
OF ECONOMICS AND
POLITICAL SCIENCE ■



UNIVERSITY OF CAPE TOWN
IYUNIVESITHI YASEKAPA - UNIVERSITEIT VAN KAAPSTAD

LSE-UCT July School in CapeTown

25 June – 6 July 2018

Explore the campus

At the Offer Holders' Day, you are free to explore the LSE campus at your leisure using the following self-guided tour and the map on the back cover.

1 OLD BUILDING

Enter the Old Building through the glass doors and you will see a reception desk to your right.

If you need any help navigating your way around the campus please ask a member of staff. The doors in front of you lead into the Old Theatre. This is one of the School's main lecture theatres and is used for teaching and guest lectures, LSE Drama Society productions and weekly Students' Union meetings.

Take the lift or stairs to the sixth floor. Go through the swing doors and follow the corridor through the Anthropology Department, round to the right and into the Shaw Library/Founders' Room.

2 THE SHAW LIBRARY

A library and common room for the entire LSE community. The Library encourages students to widen their interests by reading books on subjects not included in the School curriculum. The Shaw Library holds a generous stock of English language fiction classics through to modern book prize winners, as well as significant collections on poetry, biographies, plays, art, architecture, sport, music and travel guides. The Library also stages free lunchtime and evening concerts by leading jazz and classical performers.

Make your way back along the Anthropology corridor and through the swing doors. Take the lift or stairs to the fourth floor. Go through the swing doors into the Fourth Floor Restaurant.

3 FOURTH FLOOR RESTAURANT

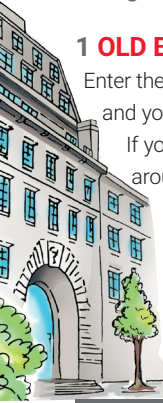
Here students can purchase main meals along with hot and cold snacks at subsidised prices. There is a wide variety of food to suit all tastes and requirements, with a selection from around the world available, reflecting the international nature of the School. Outside is a roof terrace for students to enjoy food and drink al fresco. From here you will have a good view across Houghton Street to the redevelopment of LSE's centre buildings and the creation of a new academic and social space, due for completion in 2019.

Go back to the lift/stairs and return to the ground floor. Turn right at the Old Theatre and follow the corridor until you see the entrance to the Student Services Centre on your right. Enter through the double doors.

4 STUDENT SERVICES CENTRE

The Centre brings together LSE's student support services, and the staff at the counter will be pleased to answer any basic questions you may have. Drop in sessions for more detailed queries on immigration, fees, financial support and admissions are held at various times during the week. You will also see pictures of the 16 LSE alumni or staff members who have been awarded Nobel prizes.

Leave the Student Services Centre through the door under the stairs, at the opposite end to where you entered. Continue forward and follow the blue floor signs to exit the building onto Portugal Street. Turn right, and continue until you reach the John Watkins Plaza and the LSE Library, on your right.





5 THE BRITISH LIBRARY OF POLITICAL AND ECONOMIC SCIENCE

The LSE Library, founded in 1896 as the British Library of Political and Economic Science, is the largest in the world devoted exclusively to the social sciences. The Library also houses LSE LIFE, the School's new centre for academic, personal, and professional development. Visit the information stands in LSE LIFE during the Offer Holders' Day.

On exiting the Library return to Portugal Street, bear left and cross the road so you are outside the George IV pub on Portsmouth Street. Continue along Portsmouth Street, past the LSE Students' Union shop and the Old Curiosity Shop. Turn right onto Lincoln's Inn Fields and continue until you arrive at 32 Lincoln's Inn Fields.

6 32 LINCOLN'S INN FIELDS

The former Land Registry Building opened its doors as 32 Lincoln's Inn Fields in 2013. The building enjoys views over London's largest public square. It offers five floors of academic offices plus three lower floors of teaching and student activity areas, which can cater for up to 1,000 students.

Turn left onto Lincoln's Inn Fields and walk towards Sardinia Street. LSE's New Academic Building is across the road on your right.

7 NEW ACADEMIC BUILDING

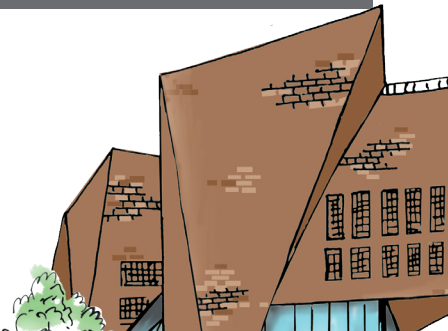
The School's New Academic Building was purchased in 2004. Constructed in 1912, the building has undergone a radical transformation and now provides students with fantastic state-of-the-art facilities. It houses the School's departments of Management and Law. It boasts eight floors of teaching rooms, lecture theatres and offices, built around a soaring central atrium flooded with natural light.

Cross Sardinia Street and walk down Portsmouth Street. On your right you will see the Saw Swee Hock Student Centre, which you are welcome to explore.

8 SAW SWEE HOCK STUDENT CENTRE

Since opening in 2014, the Student Centre has been presented with a host of architecture awards, including the prestigious RIBA London Building of the Year Award 2014. The building is a student hub at the heart of LSE's campus and houses the LSE Students' Union and large venue space. Here, you will find a pub, a fitness centre, a multifaith prayer centre, as well as the LSE Accommodation Office, and the LSE Careers Service. The Student Centre is also home to the LSE Media Centre, which includes LSE's Pulse Radio, its weekly newspaper (*The Beaver*), its termly journal (*The Clare Market Review*) and LSE's very own TV station, LooSE TV. Meet with current LSE students on the first floor of the Student Centre.

On leaving the Student Centre, turn right and then right again, onto Portugal Street.



9 PEACOCK THEATRE

LSE utilises this 999-seat West End theatre for lectures, public talks, conferences and graduation ceremonies.



Turn around and walk back along Portugal Street, continuing until you reach St Clement's Lane (behind Waterstones bookshop). Walk down St Clement's Lane then turn right onto Grange Court and then left down the steps to Clement's Inn. On your right hand side will be Towers One, Two and Three.

10 THE TOWERS

On the wall next to the entrance of Tower Three you will see a plaque marking the location of the headquarters of "The Women's Social and Political Union", also known as "The Suffragettes". Tower Three is home to the St Philips Medical Centre, providing NHS treatment to LSE students.

Continue along Clement's Inn and through the gate at the end, leading out onto the Strand. Turn right and follow the pavement round until you come to Clement House, on your right. Enter Clement House through the second set of doors.

11 CLEMENT HOUSE

Clement House was built in 1911, and acquired by LSE in the mid 1990's. On the ground floor is the Hong Kong Theatre, which is used for both academic and public lectures.

Exit Clement House and turn right on the Aldwych. Walk up to Houghton Street.

12 LSE GARRICK

On the corner of Houghton Street and the Aldwych is LSE Garrick. The ground floor of this café serves a variety of hot and cold drinks, sandwiches and snacks while the lower floor offers a main meal service. It makes an ideal place to rest at the end of your tour.



YOU HAVE NOW EXPLORED LSE!


Local area map



LSE campus map



-  LSE Building
-  LSE Building Development
-  No Access
-  Information
-  Cycle Hire Station

 All buildings have wheelchair access and lifts, except , 95A, KGS, KSW*, 5LF, 50L, POR* and SHF.
 *KSW 20 Kingsway (Language Centre only), *POR 1 Portsmouth Street (Shop only).

KEEP IN TOUCH

 @StudyLSE

 facebook.com/lseps

 @londonchoolofeconomics

 lse.ac.uk/videoDiaries

 lse.ac.uk/studentBlogs

 lse.ac.uk/studyContactUs