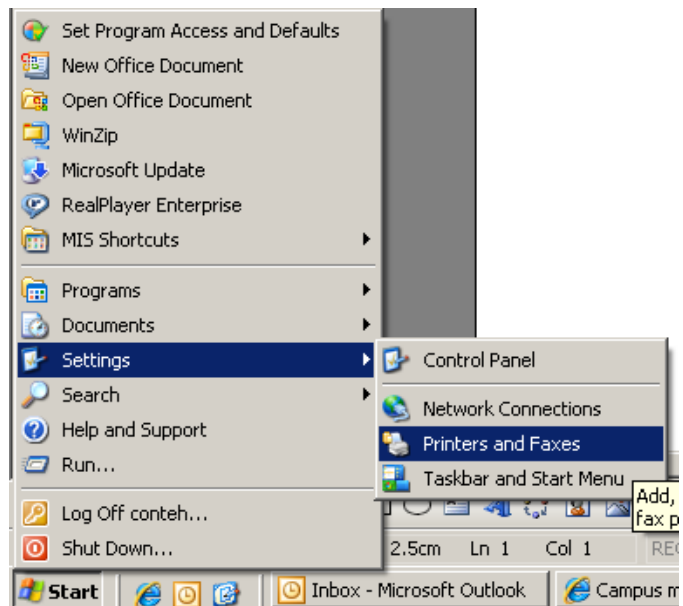
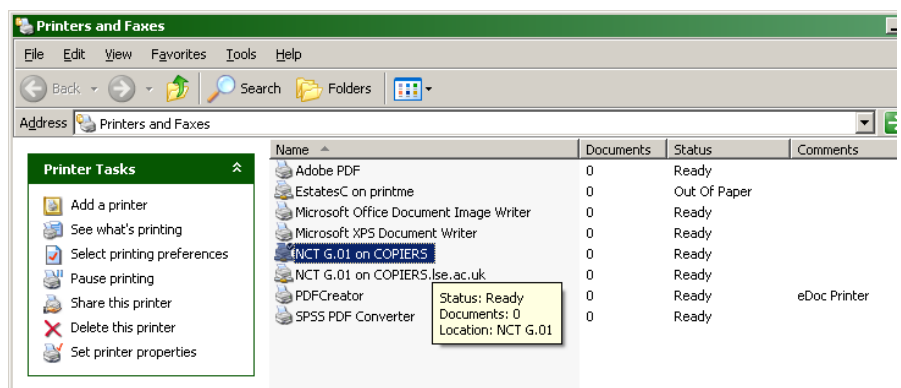


Default double-sided printing Illustrated step by step guide (only 4 steps)

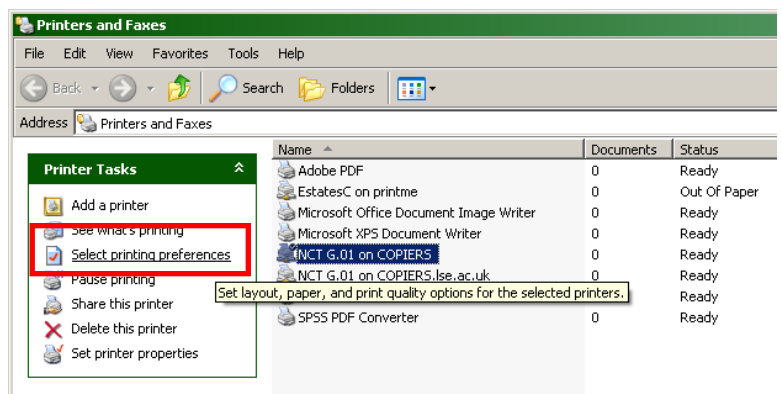
1. From the start menu, select
 - a) Settings
 - b) Printers and Faxes



2. Select a printer

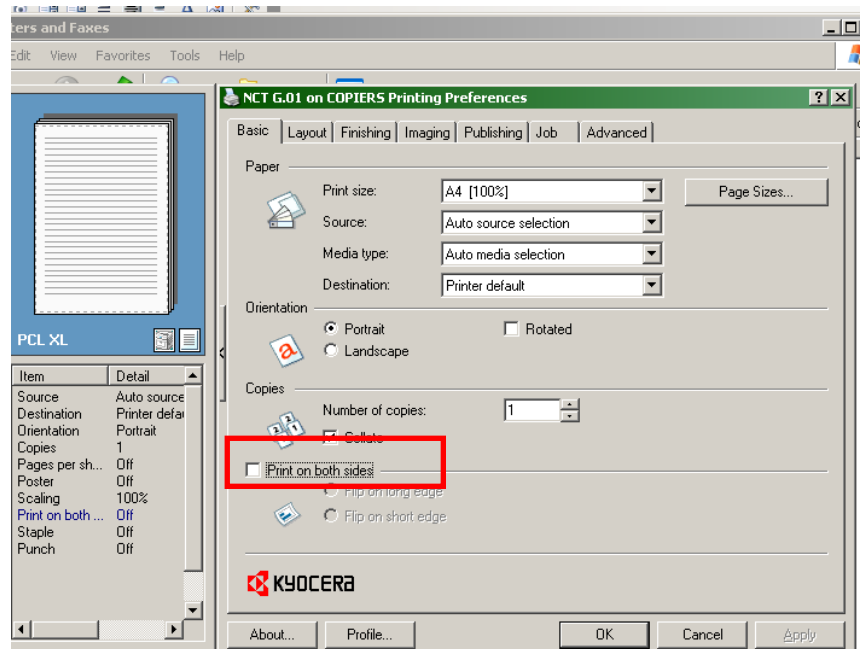


3. From the "Printer Tasks" menu, select
"Select printing Preferences"



(NB – the printer connected to your PC may not have the same screen as the one in the example)

4. On the printing preferences screen, select the check box "print on both sides"



5. Check that the box is ticked and the image is showing double-sided printing.

