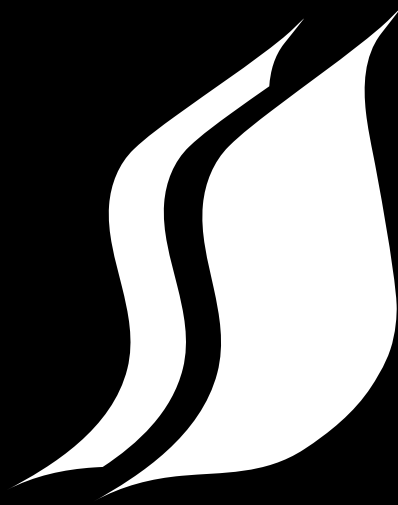




THE LONDON SCHOOL  
OF ECONOMICS AND  
POLITICAL SCIENCE ■



# SOUTHEAST ASIA

*Research at* LSE ■

## ANNUAL REPORT 2017/18

SAW SWEE HOCK SOUTHEAST ASIA CENTRE



# CONTENTS

Director's Message	1
Key Focuses	2
People	3
Research Projects	7
Research Fund	8
SEAC Events	9
LSE Southeast Asia Forum 2018	14
Medium Blog and Podcasts	16
Student Engagement	18
Founding Gift	19
The London School of Economics and Political Science	20
Institute of Global Affairs	20
LSE Students from Southeast Asia in 2017/18	20

# DIRECTOR'S MESSAGE



© Amartey Photography

SEAC has made great strides in 2017/18. Not only has the Centre continued to offer a strong repertoire of public events as part of its student and public engagement plan, but it has also added in significant ways to its range of stakeholder engagement and research-related activities. Following some trial runs, SEAC introduced in January 2018 what it calls the "Cove Sessions", which are essentially dialogues based on briefings by officials, senior academics and other experts working on Southeast Asia. SEAC also bettered its own plan by organising not one but two academic workshops as part of our efforts to develop SEAC's role in promoting high quality research on Southeast Asia. A key characteristic of an increasing number of SEAC events and activities is their collaborative nature with other units within LSE as well as with external organisations.

From my perspective, the academic year started off very well. In September, SEAC organised a half day conference with the Department of International Relations at LSE on the topic of how small states and regional powers have reacted to challenges posed by China and the US, under the respective leadership of Xi Jinping and Donald Trump. This was immediately followed by SEAC's inaugural academic workshop on what the literature calls "hedging". A three-part lecture series on ASEAN was also organised in Michaelmas term, involving high calibre speakers Alice Ba, Jürgen Rüländ and Rizal Sukma. In December, Chua Beng Huat's talk on Singapore received a particularly enthusiastic response from a largely student audience.

Lent term proved similarly successful. SEAC was delighted to have John Virgoe, head of the UK Foreign and Commonwealth Office's South-East Asia Department, launch its first formal Cove Session and cast light on factors and priorities influencing UK policy towards the region. A week later, Sidney Jones spoke to a thrilled audience on ISIS in Southeast Asia in advance of SEAC's second academic workshop and Cove Session on the topic of militant Islamism. As the term progressed, SEAC also ran a series of five talks by LSE-based researchers who had benefited from funding by the SEAC Research Fund in 2016/17.

The momentum of activity was carried over into summer term. The third LSE Southeast Asia Forum – our flagship annual event – is of particular note in this regard. It featured an array of outstanding presentations and exchanges across a diverse range of highly topical economic and political issues and challenges confronting Southeast Asia. It was arguably the best one-day Forum organised by SEAC yet.

Research undertaken by Centre staff on future UK-Southeast Asia economic relations yielded SEAC's first policy-focused report in June. Policy options laid out in this report were then discussed with the private sector in a roundtable jointly organised with the UK-ASEAN Business Council as part of our ongoing collaboration on the topic, with a view to establishing how UK businesses wish to see the UK government approach Southeast Asia post-Brexit. In short, it has been a very busy year.

SEAC would not have been able to engage so many audiences and pursue its growing research agenda were it not for its enthusiastic and committed staff. I have been very fortunate indeed to have been working with a team of talented and dedicated colleagues. A big thanks go to them and to all others who have supported SEAC over the past two years.

**Dr Jürgen Haacke**

Director, LSE Saw Swee Hock Southeast Asia Centre



© Dan Caspersz



## KEY FOCUSES

**The Saw Swee Hock Southeast Asia Centre (SEAC) is a cross-disciplinary, regionally-focused academic centre within the Institute of Global Affairs at LSE.**

**Building on the School's deep academic and historical connections with Southeast Asia, SEAC seeks to foster world-leading academic and policy research with a focus on the Southeast Asian social and political landscape.**

**SEAC is LSE's gateway to understanding Southeast Asia.**

### Pushing the boundaries of Southeast Asia research

The Centre promotes and draws from a rich pool of research undertaken by Southeast Asia experts at LSE who work alongside colleagues from across disciplines and from around the world on research relevant to the region. We host visiting appointments that will foster further synergies with research on Southeast Asia conducted at LSE.

### Building a network of exceptional Southeast Asian scholars

The Centre aims to nurture a new generation of Southeast Asian scholars. We run interdisciplinary postgraduate research workshops for students from LSE and beyond working on Southeast Asia, and host joint research workshops with academic partners at LSE and in the region. We are keen to offer opportunities to promising post-doctoral researchers interested in affiliation with the Centre.

### Promoting dialogue and engagement

The Centre serves as a hub for academic activities on Southeast Asia for London and beyond. SEAC is keen to engage policymakers, specialists and the large number of students interested in issues affecting the ASEAN region. SEAC ensures that the reach of its work extends as widely as possible through public lectures, workshops and other organised events in the UK, Europe and in Southeast Asia that draw on well-established links with government representatives, universities and think tanks, especially in Southeast Asia.

## Staff



**Jürgen Haacke**  
Centre Director

Dr Jürgen Haacke is Associate Professor in International Relations. He has multiple research interests in relation to Southeast Asia, including the study of ASEAN, the factors shaping foreign and security policies of Southeast Asian states, as well as the role and policies of major powers in relation to the ASEAN region. Dr Haacke has published in particular on the development of regional norms and practices and their impact on regional cooperation. He has also written extensively on multiple aspects of Myanmar's politics and foreign relations.



**Quynh Le Vo**  
Centre Manager

Le holds a BSc in International Relations from LSE. She oversees SEAC's financial arrangements as well as execution of events, research activities and external communication. In addition, she supports the SEAC Director in the Centre's strategic planning and fundraising.



**John Harley Breen**  
Researcher

John graduated with a distinction in MA International Relations from Queen Mary University of London and has previously worked as a researcher for Independent Diplomat and as an advocacy consultant for a Cambodian NGO. He works with Dr Jürgen Haacke on the "UK-Southeast Asia Relations" research project and supports other research activities undertaken at SEAC.



**Lucinda Norman-Walker**  
Events and Communications Assistant

Lucinda has a BA in Theology from Durham University, and an MA in Islamic and Middle Eastern Studies from the University of Exeter. She coordinates SEAC's events programme, communications and student engagement activities, whilst supporting the day-to-day running of the Centre.



**Justine Bailliant**  
Project Support Assistant

Justine is a third-year undergraduate student at LSE in International Relations and History. She has supported SEAC with the "UK-Southeast Asia Relations" and "Myanmar in Transition" research projects.

## PEOPLE

### Steering Committee

The SEAC Steering Committee serves as a locus for consultation and deliberation, with the main responsibility to advise the SEAC Director on issues relevant to the Centre in line with its strategic objectives.

### Members in 2017/18

Jürgen Haacke, Associate Professor in International Relations and Centre Director, LSE SEAC (chair)

Tim Forsyth, Professor of Environment and International Development

Nicholas Long, Assistant Professor in Anthropology

Kirsten Schulze, Associate Professor in International History

Hyun Bang Shin, Associate Professor in Geography and Urban Studies

Quynh Le Vo, Centre Manager, LSE SEAC



## Centre Associates

### Catherine Allerton Associate Professor in Anthropology at LSE

Dr Catherine Allerton is a specialist in the anthropology of island Southeast Asia. She has conducted ethnographic research in the city of Kota Kinabalu, Sabah, with the children of Filipino and Indonesian migrants, and in rural Flores, Indonesia, with highland coffee farmers. Her work is broadly concerned with kinship, childhood, migration, place and landscape.

### Sylvia Chant Professor of Development Geography at LSE

Professor Sylvia Chant has conducted fieldwork relating to gender and development in Mexico, Costa Rica, the Philippines and The Gambia, and has published widely on issues such as poverty, rural-urban migration, female employment and female-headed households.

### Tim Forsyth Professor of Environment and Development at LSE

Professor Tim Forsyth works on watershed and forest policies in Thailand and Indonesia, climate change policy and technology transfer in Southeast Asia, social movements and environmental governance, and the development of new and inclusive public-private partnerships as a basis for implementing global policy.

### Nicholas Long Assistant Professor in Anthropology at LSE

Dr Nicholas Long is a specialist in the anthropology of Indonesia and the Malay world, with a particular focus on the ways political change influences the experience of self, agency and relations. He is currently working on two research projects, one investigating emergent forms of popular psychology in Indonesia and their relationship to subjectivity, and one examining changing public perceptions of democracy.

### Tan Sri Munir Majid Chairman of Bank Muamalat Malaysia Berhad

Dr Munir Majid's main interest is in the evolution of the region's contemporary international affairs under ASEAN. His focus on ASEAN, in turn, closely examines its economic integration process and its external economic engagements. Dr Majid holds numerous positions, including chairmanships of CIMB ASEAN Research Institute and of the ASEAN Business Advisory Council, Malaysia. He is also the President of the ASEAN Business Club and a Visiting Senior Fellow at LSE IDEAS.

### James Putzel Professor of Development Studies at LSE

Professor James Putzel is well-known for his work in the Philippines where he has maintained active research since 1984. He is recognised for his expertise on the politics of agrarian reform in the Philippines and remains influential in current policy actions and debates in the country. His current research focuses on politics and governance in crisis states including work on understanding "failed states", political Islam in Southeast Asia and the politics of the HIV/AIDS crisis.

### Kirsten Schulze Associate Professor in International History at LSE

Dr Kirsten Schulze works on communal and separatist conflicts as well as Islamism in Indonesia and the Middle East. She is currently writing a book on the Ambon conflict. Previously she was the Deputy Director of LSE SEAC and Head of the LSE IDEAS Southeast Asia Programme, and ran the Indonesia seminar series at Chatham House.

### Hyun Bang Shin Associate Professor in Geography and Urban Studies at LSE

Dr Hyun Bang Shin's main research interests lie in the critical analysis of the political economic dynamics of urban (re-) development. He has written widely on Asian urbanisation, speculative urbanism, the politics of displacement and urban spectacles. His recent projects include the circulations of real estate capital and urbanisms in Southeast Asia, looking at in particular Singapore and Vietnam.

### Felicia Yap

Dr Felicia Yap's research has centred on the effects of the Japanese occupation of Southeast and East Asia. Her interests include memories of conflict and captivity, the experiences of the war prisoners of the Japanese, the impact of the war on European and Asian women, as well as the evolution of Eurasian, Jewish and Portuguese communities in colonial Asia.

# PEOPLE

# PEOPLE



© Amartey Photography



© Amartey Photography



© Amartey Photography

## Visiting Appointments

SEAC's Visiting Appointments Scheme offers academics, advanced research students and professionals with relevant experience on Southeast Asia the chance to conduct their research in London while drawing from LSE facilities and SEAC's expertise. Visiting Fellows are encouraged to engage with SEAC activities and supported in promoting their work through public events and seminars. They also have the opportunity to connect with our Southeast Asia researchers, fostering knowledge sharing and potential future collaboration.

Visiting Appointments in 2017/18

### Dr Do Young Oh Visiting Fellow

Dr Do Young Oh is a Researcher at LSE Cities. He recently completed his PhD in Regional and Urban Planning at the Department of Geography and Environment at LSE with his thesis focusing on a comparative analysis of East Asian urbanisation processes. His research at SEAC involves an investigation into the university-city relationship in Singapore and Vietnam in a (post-) colonial context.

### Daniel Peterson Visiting Research Student

Daniel Peterson is currently completing his PhD at the Institute for Religion, Politics and Society at Australian Catholic University. Daniel's thesis investigates whether or not Indonesia's broader human rights legal framework can withstand the challenges presented by the rise of political Islam in the archipelago. Daniel also works as a research assistant at the Institute, where he is a principal contributor to both the Euro-Islam and SHARIAsource projects.

### Dr Lukas Schlogl Visiting Fellow

Dr Lukas Schlogl is a Research Associate with the ESRC Global Poverty & Inequality Dynamics Research Network at the Department of International Development, King's College London. His current work focuses on structural change, digital transformation and political behaviour in Indonesia. At SEAC, Lukas reviewed the extant literature about potential economic impacts of labour-displacing technological change on Southeast Asian economies.

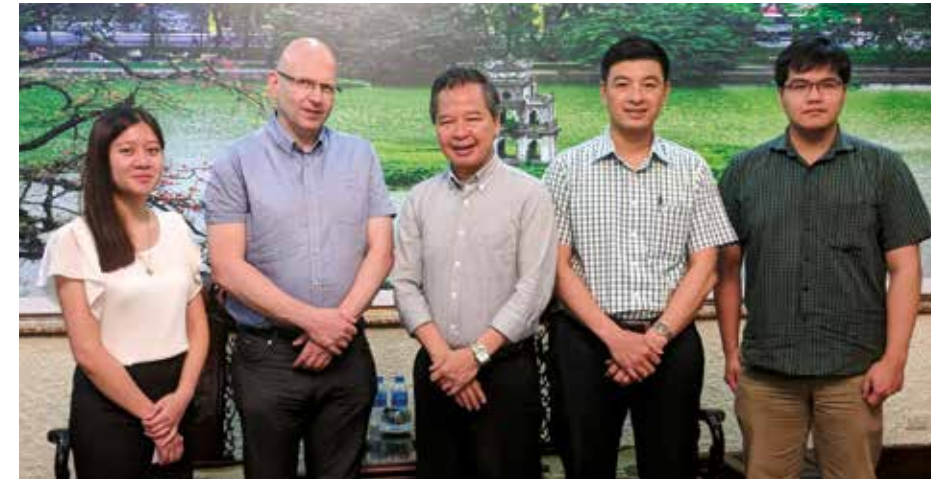
### Dr Joel Selway Visiting Senior Fellow

Dr Joel Selway is an Associate Professor of Political Science at Brigham Young University. His research interests focus on ethnically divided societies and especially on how to design democratic institutions to prevent conflict. During his time with SEAC, Dr Selway examined the question of whether Thailand's nation-building project will endure beyond the death of its beloved monarch, the late King Bhumibol Adulyadej.

## PEOPLE

“SEAC's friendly and welcoming staff provided me with a great environment in which to conduct research and progress with my thesis. I was able to consult LSE experts in the field, while the Centre's central London location and reputation enabled me to network with people I would not otherwise have had the opportunity to meet.”

**Daniel Peterson**



## RESEARCH PROJECTS

In 2017/18, SEAC took steps towards strengthening its research identity and portfolio by initiating two research projects hosted within the Centre. Both projects have also presented an opportunity for SEAC to collaborate with partners sharing our interest in the particular research themes. SEAC's research activities are supported by Arvind Khattar (BSc Economics, 2002).

### UK-Southeast Asia Relations

The purpose of this project is to analyse UK-Southeast Asia relations, to explain recent policy change and to offer a critical appraisal, whilst also providing policy advice in the context of Brexit. A major aspect of the initial research in 2017/18 has focused on the question of the UK's future partnership arrangement with the Association of Southeast Asian Nations (ASEAN) and possible options for future new trading arrangements. In this regard, SEAC has collaborated with the UK-ASEAN Business Council (UKABC) over a period of several months.

#### Activities:

In June 2018, SEAC and UKABC organised a joint roundtable at which participants from the UK private sector with a strong interest in Southeast Asia discussed an initial report produced by SEAC (with input from UKABC) on future UK-Southeast Asia economic relations, including options for the development of a future formal UK-ASEAN partnership and possible trade agreements.

Field research for this project has primarily been undertaken in London. In July 2018, interviews were also conducted in Vietnam and Singapore.

#### Planned outputs:

Outputs are to include academic papers and journal articles as the project continues into 2018/19.

#### People:

Dr Jürgen Haacke, Principal Investigator  
John Harley Breen, Researcher

### Myanmar in Transition

This umbrella project explores the impact of political change in Myanmar. It currently consists of two research strands: Myanmar foreign policy in the context of the country's transition, and foreign policy agency in relation to ethnic armed organisations. The research project is carried out in collaboration with the LSE Global South Unit.

#### Activities:

Field research for this project was undertaken in Myanmar in September 2017 and January 2018.

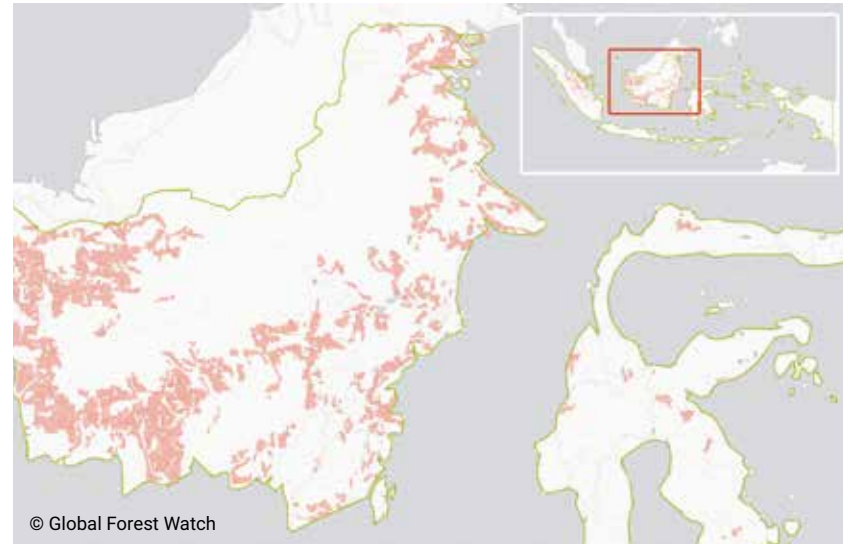
#### Planned outputs:

Conference papers and journal articles from 2018/2019 onwards.

#### People:

Dr Jürgen Haacke, Director of LSE SEAC  
Professor Chris Alden, Co-director of LSE Global South Unit  
Dr David Brenner, Lecturer at University of Surrey and Associate Fellow at LSE Global South Unit





## RESEARCH FUND

The SEAC Research Fund was established with the aim to support and promote high-quality research on Southeast Asia by LSE-based academics.

The first round of funding was awarded in February 2016 for research activities taking place during academic years 2015/16 and 2016/17. The findings of these projects were presented at a dedicated "LSE SEAC Research Seminar Series" during academic year 2017/18, introducing new and innovative LSE research on Southeast Asia to the public.

The second round of funding was awarded in January 2018 for research activities taking place during academic years 2017/18 and 2018/19.

### Currently funded research project

#### The Palm Oil Concession Moratorium and its Spatial Impact on Deforestation

This project aims to analyse the effectiveness of the 2011 Moratorium on palm oil, timber and logging concessions issued in 2010. The Moratorium sought to halt the conversion of primary forest and peatlands into palm oil, timber and logging estates, thus slowing down the intensive deforestation processes which

characterised the Indonesian land-use sector in the previous decades. Using a spatially defined dataset combined with econometric methods for impact analysis, the project attempts to assess the relative significance of different drivers of deforestation and the Moratorium's effectiveness in slowing down deforestation.

#### Principal Investigators:

Dr Ben Groom, Associate Professor in Environment and Development Economics at LSE  
Dr Charles Palmer, Associate Professor in Environment and Development at LSE



## SEAC EVENTS

### Public events

SEAC serves as a globally recognised hub for public debate and engagement on Southeast Asia in London. In 2017/18, we ran an active public engagement programme of 16 free and open events. In addition to individual events focusing on topical issues in the region, SEAC also organised two thematic events series: the ASEAN 50 Lecture Series to mark the 50th anniversary of the grouping's establishment in Michaelmas term, and the SEAC Research Fund Seminar Series in Lent and Summer terms that allowed fund recipients to present their Southeast Asia research projects to a wide audience of students, fellow researchers and the general public.

The Challenges of Trump's America and Xi's China: perspectives and strategies in Northeast and Southeast Asia

**8 September 2017**

**In collaboration with the Department of International Relations at LSE**

This event was a half-day conference consisting of two panel discussions.

The first panel explored the ways in which the presidential transition in the US has impacted Washington's alliances with its Northeast Asian partners. The panel also examined China's use of economic statecraft in the pursuit of its main policy objectives in Asia, and assessed the implications for the international politics of the region that stem from recent developments in US-Russia ties.

#### Speakers:

Dr John Hemmings, Director of the Asia Studies Centre at the Henry Jackson Society; Professor Tomila Lankina, Professor of International Relations at LSE; Dr Adam Liff, Assistant Professor of East Asian International Relations at Indiana University; Dr Darren Lim, Lecturer in International Relations at Australian National University.

The second panel examined Southeast Asian "hedging" strategies with an additional focus on Indonesia's reaction to rising Sino-US tensions, and explored perspectives on the evolving debates in Washington regarding the South China Sea.

#### Speakers:

Dr Cheng-Chwee Kuik, Associate Professor at the Strategic Studies and International Relations Program at the National University of Malaysia; Dr Ann Marie Murphy, Associate Professor at the School of Diplomacy and International Relations at Seton Hall University; Dr Aileen San Pablo-Baviera, Professor at the Asian Centre at the University of the Philippines.

#### Chair:

Dr Jürgen Haacke, Director of SEAC and Associate Professor in International Relations at LSE



## Armed Groups, State and Society in Myanmar

**13 October 2017**

**In collaboration with the LSE Global South Unit**

### Speakers:

Dr David Brenner, Lecturer in International Relations at the University of Surrey; John Buchanan, Director of Communications at the Institute for Strategy and Policy – Myanmar; Dr Patrick Meehan, Postdoctoral Fellow in the Department of Development Studies at SOAS; Ja Htoi Pan, Associate Director of the Kachinland Research Centre in Myitkyina; Martin Smith, Author of *Burma: Insurgency and the Politics of Ethnicity* (Zed Books), *Ethnic Groups in Burma: Development, Democracy and Human Rights (ASI)* and *State of Strife: The Dynamics of Ethnic Conflict in Burma* (East-West Centre Washington)

### Chair:

Dr Jürgen Haacke, Director of SEAC and Associate Professor in International Relations at LSE

Indonesia in ASEAN: reconciliation, active engagement and strategic reassessment

**17 October 2017**

**ASEAN 50 Lecture Series**

### Speaker:

H.E. Dr Rizal Sukma, Ambassador of the Republic of Indonesia to the UK and Ireland

### Chair:

Dr Jürgen Haacke, Director of SEAC and Associate Professor in International Relations at LSE

ASEAN as an Actor in International Fora: its role in the UN and the WTO

**6 November 2017**

**ASEAN 50 Lecture Series**

### Speaker:

Professor Jürgen Rüländ, Professor of Political Science at the University of Freiburg

**Chair:** Dr Jürgen Haacke, Director of SEAC and Associate Professor in International Relations at LSE

Bringing Institutions Back In: ASEAN's institutional logics and effects at a time of great power transition

**20 November 2017**

**ASEAN 50 Lecture Series**

### Speaker:

Professor Alice Ba, Professor of Political Science at the University of Delaware

### Chair:

Dr Jürgen Haacke, Director of SEAC and Associate Professor in International Relations at LSE

Disavowing Liberalism: the political legitimacy and longevity of the People's Action Party in Singapore

**5 December 2017**

### Speaker:

Professor Chua Beng Huat, Head of Urban Studies at Yale-NUS College and Professor of Sociology, National University of Singapore

### Chair:

Dr Hyun Bang Shin, SEAC Associate and Associate Professor in Geography and Urban Studies at LSE

Was the ISIS Threat in Southeast Asia Overblown?

**17 January 2018**

### Speaker:

Sidney Jones, Founder and Director of the Institute for Policy Analysis of Conflict (IPAC)

### Chair:

Dr Jürgen Haacke, Director of SEAC and Associate Professor in International Relations at LSE

Drugs and Development: from colonialism to the Sustainable Development Goals

**23 January 2018**

**SEAC Research Fund Seminar Series**

### Speakers:

Dr John Collins, Executive Director of the LSE International Drug Policy Unit (IDPU); Alexander Söderholm, Policy Coordinator of LSE IDPU

### Chair:

Dr Jürgen Haacke, Director of SEAC and Associate Professor in International Relations at LSE

Red North, Blue North, Yellow North, Whose North? Contesting Thai Nationalism in Shinawatra Country

**6 February 2018**

### Speaker:

Dr Joel Selway, Visiting Senior Fellow at SEAC and Associate Professor of Political Science at Brigham Young University

### Chair:

Dr Jürgen Haacke, Director of SEAC and Associate Professor in International Relations at LSE

Circulations of Urbanism and Real Estate Capital: the case of Korean and Singaporean developers in Vietnam

**20 February 2018**

**SEAC Research Fund Seminar Series**

### Speaker:

Dr Hyun Bang Shin, SEAC Associate and Associate Professor of Geography and Urban Studies at LSE

### Chair:

Dr Jürgen Haacke, Director of SEAC and Associate Professor in International Relations at LSE

The Ambon Jihad

**27 February 2018**

**SEAC Research Fund Seminar Series**

### Speaker:

Dr Kirsten Schulze, SEAC Associate and Associate Professor in International History at LSE

### Chair:

Dr Jürgen Haacke, Director of SEAC and Associate Professor in International Relations at LSE

Industrialisation and Backward Linkages in Global Value Chains: new trade agreements and Vietnam's garments industry

**13 March 2018**

**SEAC Research Fund Seminar Series**

### Speakers:

Dr Shamel Azmeh, Lecturer at the Department of Social and Policy Sciences at the University of Bath and Visiting Fellow at the LSE Middle East Centre; Dr Rachel Alexander, Research Officer at the Department of Management, LSE

### Chair:

Dr Hyun Bang Shin, SEAC Associate and Associate Professor in Geography and Urban Studies at LSE

Unlocking Poverty Traps: what could "Graduation Packages" change for Vietnam's ethnic minorities and Cambodia's ultra-poor?

**20 March 2018**

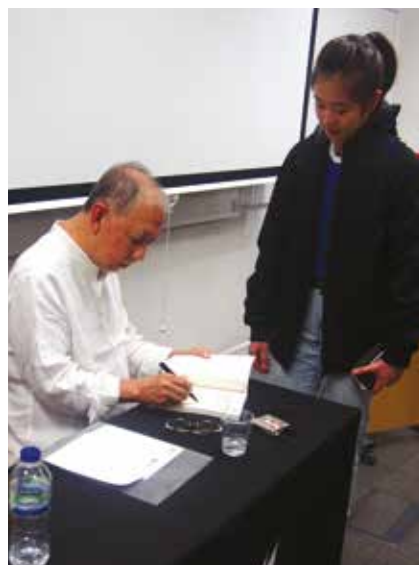
**SEAC Research Fund Seminar Series**

### Speaker:

Dr Stephanie Levy, Guest Lecturer at the Department of International Development, LSE

### Chair:

Professor James Putzel, SEAC Associate and Professor of Development Studies at LSE





Overcoming Poverty and the Role of Politics in Economic Growth in the Philippines

**6 April 2018**

**In collaboration with LSESU DESTIN and the Department of International Development at LSE**

**Speaker:**

Her Excellency Maria Leonor "Leni" Gerona Robredo, Vice President of the Philippines

**Chair:**

Professor James Putzel, SEAC Associate and Professor of Development Studies at LSE

Policy Entrepreneurs and US Burma Policy under President Obama

**25 April 2018**

**SEAC Research Fund Seminar Series**

**Speaker:**

Dr Jürgen Haacke, Director of SEAC and Associate Professor in International Relations at LSE

**Chair:**

Professor James Putzel, SEAC Associate and Professor of Development Studies at LSE

Automation and the Future of Work in Southeast Asia

**30 May 2018**

**Speaker:**

Dr Lukas Schlogl, Research Associate with ESRC Global Poverty & Inequality Dynamics Research Network at the Department of International Development King's, College London

**Chair:**

Dr Jürgen Haacke, Director of SEAC and Associate Professor in International Relations at LSE

## Cove Sessions

**The SEAC Cove Sessions are designed as a series of informal and high-level briefings involving policymakers, officials, researchers and other stakeholders that are held under the Chatham House Rule or off-the-record. The purpose of these sessions is to engender substantive discussion around important issues relating to Southeast Asia, to freely exchange analysis and insights, and to develop new ideas.**

Political Challenges in Singapore

**6 December 2017**

**Speaker:**

Professor Chua Beng Huat (National University of Singapore)

The UK's Evolving Southeast Asia Policy

**12 January 2018**

**Speaker:**

John Virgoe (UK Foreign and Commonwealth Office)

ISIS in Indonesia

**18 January 2018**

**Speaker:**

Sidney Jones (Institute for Policy Analysis of Conflict)  
Nava Nuraniyah (Institute for Policy Analysis of Conflict)  
Solahudin (University of Indonesia)

UK-ASEAN Breakfast Briefing on Cambodia

**21 February 2018**

**In collaboration with the UK-ASEAN Business Council**

**Speaker:**

Her Excellency Dr Soeung Rathchavy (Royal Embassy of Cambodia)

## Academic workshops

**SEAC's academic workshops bring together local and international academics, researchers and practitioners on an invitation only basis to work together on high-quality, innovative research on particular themes relevant to Southeast Asia.**

Hedging in International Politics: conceptualising and theorising Southeast Asia's relations with major powers in comparative perspective

**9-10 September 2017**

This workshop took stock of the existing literature on "hedging", looking particularly at existing conceptualisations and related methodological issues. Empirically, the workshop focused on cases from Southeast Asia which were compared to illustrations from Northeast and South Asia.

**Presenters:**

Dr John Ciorciari (University of Michigan)  
Dr Jürgen Haacke (LSE)  
Dr David Martin Jones, (King's College London)  
Dr Alexander Korolev (Lee Kuan Yew School of Public Policy, National University of Singapore)  
Dr Adam Liff (Indiana University)  
Dr Darren Lim (Australian National University)  
Dr Ann Marie Murphy (Seton Hall University)  
Dr Øystein Tunsjø (Norwegian Institute for Defence Studies)

**Discussants:**

Dr John Hemmings (Henry Jackson Society)  
Dr Cheng-Chwee Kuik (National University of Malaysia)  
Dr Aileen San Pablo-Baviera (University of the Philippines)  
William Wang (China Foreign Affairs University)

Militant Islamism in Southeast Asia

**19 January 2018**

This workshop examined the recent evolution of militant Islamism in Southeast Asia by exploring the impact of the defeat of ISIS in the Middle East and returning Southeast Asian mujahedin, the take-over of Marawi in the Philippines by pro-ISIS jihadis, and rising religious politics and protest in the region. It focused specifically on Malaysia, Indonesia and the Philippines, and was attended by researchers, embassy staff and civil servants.

**Presenters:**

Dr Julie Chernov Hwang (Goucher College)  
Sidney Jones (Institute for Policy Analysis of Conflict)  
Professor Joseph Chinyong Liow (Nanyang Technological University Singapore)  
Dr Maszlee Malik (International Islamic University, Malaysia)  
Nava Nuraniyah (Institute for Policy Analysis of Conflict)  
Dr Kirsten Schulze (LSE)  
Solahudin (University of Indonesia)





# LSE SOUTHEAST ASIA FORUM 2018

The LSE Southeast Asia Forum (SEAF) is a one-day conference organised annually in London and serves as SEAC's primary vehicle to engage with expert academics and the Southeast Asia policymaking community on contemporary issues related to the region.

This year, SEAC was delighted to have LSE Director, Dame Minouche Shafik at SEAF to give the welcoming remarks as well as Her Excellency Ms Foo Chi Hsia, High Commissioner of the Republic of Singapore to the UK and Ambassador to Ireland and Iceland, to deliver the keynote lecture on Singapore's ASEAN 2018 chairmanship priorities. The expert panellists then explored a range of contemporary issues facing Southeast Asia, including economic engagement

strategies pursued by major powers vis-à-vis the region and the economic risks the region holds for businesses and investors. The two afternoon panels focused on a range of country specific case studies, including the domestic politics and developments of a range of ASEAN countries undergoing political change, as well as a panel dedicated to the complexities currently being faced by Myanmar.

A number of papers from SEAF 2018 have been published on SEAC's "Medium" account and a podcast of the second panel, "The Great Powers' Economic Engagement of Southeast Asia", is also available on the SEAC website.



## Programme

### Welcoming Remarks

**Dame Minouche Shafik** (LSE Director)  
**Dr Jürgen Haacke** (LSE SEAC Director)

### Keynote Lecture – ASEAN in a Contested World: Singapore's 2018 chairmanship priorities

H.E. Foo Chi Hsia, High Commissioner of the Republic of Singapore to the UK and Ambassador to Ireland and Iceland

### Panel I – The Great Powers' Economic Engagement of Southeast Asia

**Chair:** **Professor Tim Forsyth** (LSE SEAC)

**Panellists:** **Dr Deborah Elms** (Asian Trade Centre)  
*US-Southeast Asian Trade Policy: more a thought than a strategy*

**Dr Chheang Vannarith**  
(ISEAS-Yusof Ishak Institute)  
*Understanding China's Regional Economic Diplomacy through the Belt Road Initiative and Lancang-Mekong Cooperation*

**Professor Yee Kuang Heng**  
(University of Tokyo)  
*Japan's Perspectives on Connectivity Initiatives and Trade Liberalisation in Southeast Asia*

### Panel II – Economic Challenges and Risks in Southeast Asia

**Chair:** **Jonathan Wheatley** (*Financial Times*)

**Panellists:** **Peter Mumford** (Eurasia Group)  
**Cesar Purisima** (Milken Institute)  
**Ying Staton** (Global Counsel)  
**Geoffrey Yu** (UBS Wealth Management)

### Panel III – Leadership and Political Futures

**Chair:** **Dr Champa Patel** (Chatham House)

**Panellists:** **Dr Astrid Norén-Nilsson** (Lund University)  
*Cambodia: towards the 2018 elections and beyond*

**Dr Thitinan Pongsudhirak**  
(Chulalongkorn University)  
*Thailand Between Democracy and Dictatorship*

**Professor James Putzel** (LSE Department of International Development)  
*The Philippines as an Extreme Case in the Worldwide Rise of Populist Politics*

**Professor Meredith L. Weiss** (State University of New York at Albany)  
*What Future(s) Do Malaysia's Elections Portend?*

### Panel IV – Myanmar: challenges and risks

**Chair:** **Dr Jürgen Haacke** (LSE SEAC)

**Panellists:** **Dr Anthony Ware** (Deakin University)  
*Myanmar's "Rohingya" Conflict: misconceptions, complexity, intractability, drivers*

**Kai Htang Lashi** (Kachin National Organisation)  
*The Kachin Perspective on the Peace Process: why it has been stalled*

**Professor Robert H Taylor**  
*The Army and the Future of the National League for Democracy*

**Thomas Burn** (UK Foreign and Commonwealth Office)  
*The UK Government's Burma Policy*





# MEDIUM BLOG AND PODCASTS

SEAC has continued to invest in and develop its use of online communications platforms to engage with our local and international audiences. Since 2017, the Centre's "Medium" page has been used to host blog pieces from guest speakers and summaries of SEAC events as well as to republish articles and op-eds written by SEAC staff that have originally been published on other platforms.

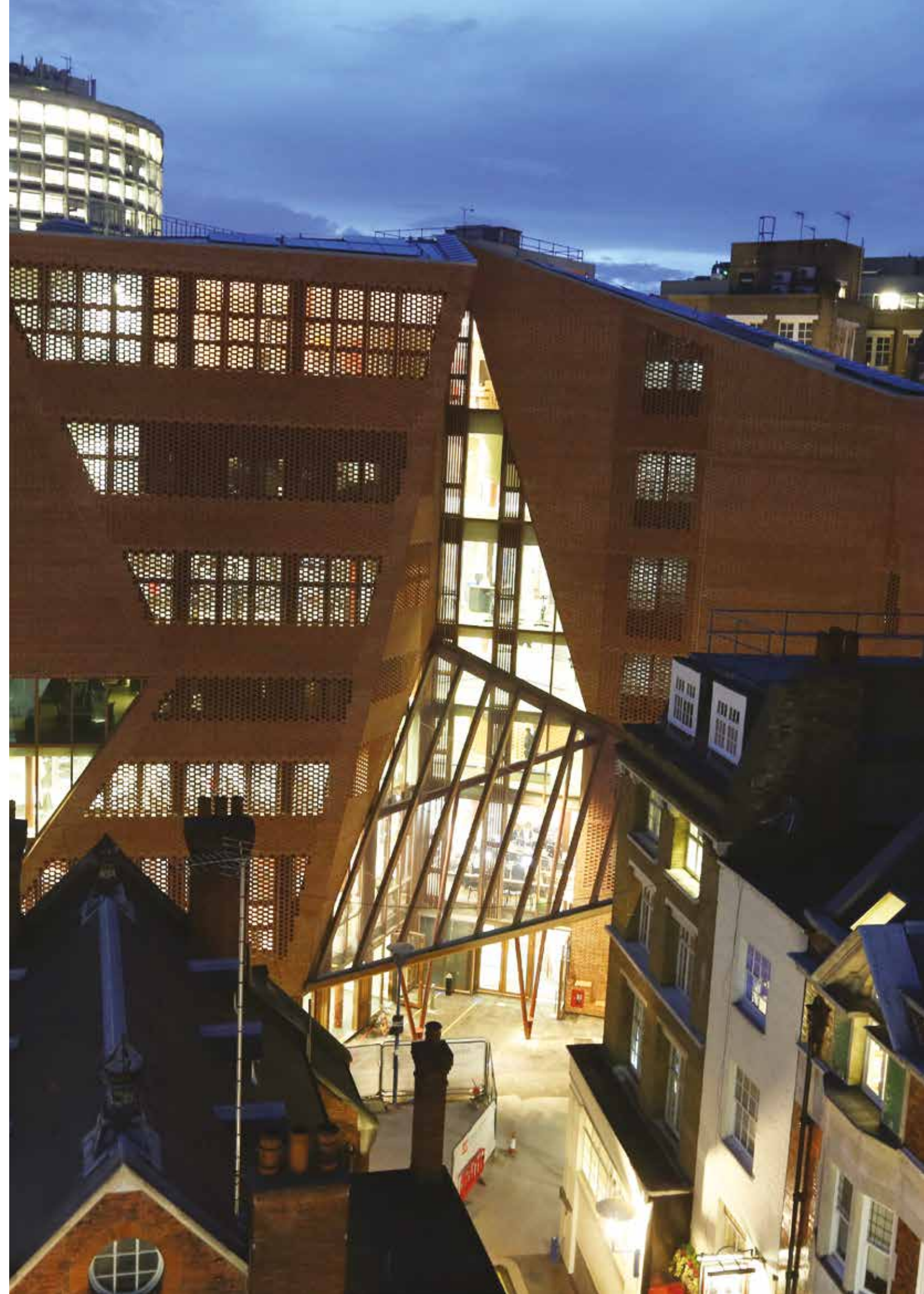
## Blog posts published in 2017/18

- *ASEAN's Growing Pains and Challenges*  
Tang Siew Mun – 3 August 2017
- *ASEAN – Myth or Reality from an Airline Perspective*  
Aireen Omar – 9 August 2017
- *ASEAN's New Human Rights Agenda?*  
Anja Jetschke – 17 August 2017
- *Changes in Contemporary Philippines Foreign Policy: unravelling the balancing policy on an emergent China*  
Renato Cruz De Castro – 23 August 2017
- *Leadership Change in Myanmar and its Implication for Foreign Policy*  
Soe Myint Aung – 30 August 2017
- *Armed Groups, State and Society in Myanmar*  
John Harley Breen – 1 November 2017
- *Steering UK-Southeast Asia Relations post-Brexit*  
Jürgen Haacke and John Harley Breen – 10 May 2018  
(Originally published on *East Asia Forum* – 17 March 2018)
- *The Philippines as an Extreme Case in the Worldwide Rise of Populist Politics*  
James Putzel – 25 May 2018
- *The Army and the Future of the National League of Democracy*  
Robert Taylor – 5 June 2018

- *What Future(s) Do Malaysia's Elections Portend?*  
Meredith Weiss – 14 June 2018
- *Cambodia: towards July's elections and beyond*  
Astrid Norén-Nilsson – 19 June 2018
- *Thailand Between Democracy and Dictatorship*  
Thitinan Pongsudhirak – 22 June 2018
- *Myanmar's "Rohingya" Conflict: misconceptions, complexity, intractability, drivers*  
Anthony Ware – 6 July 2018
- *US Approaches to Southeast Asia: more a thought than a policy*  
Deborah Elms – 10 July 2018
- *Understanding China's Regional Economic Diplomacy through LMC and BRI*  
Chheang Vannarith – 31 July 2018

## Podcasts

SEAC generally records its public events in order to publish them on its website as podcasts for interested audiences. A number of podcasts on a range of topics concerning the Southeast Asia region have been released since the Centre's establishment and in 2017/18, a further 10 podcasts were published.





# STUDENT ENGAGEMENT

**Southeast Asian students make up over one quarter of LSE's overseas undergraduates as well as a significant proportion of postgraduate students at the School. At the same time, Southeast Asia is of growing academic interest also to LSE students from outside the region. Student engagement has been one of SEAC's objectives since its establishment and remains a priority for the Centre.**

In 2017/18, the Centre has continued to work closely with and support the activities of the LSESU ASEAN Society, from collaborating at LSE's Welcome Fair at the beginning of the year, to regularly co-promoting one another's events and news online. The society also built upon SEAC's "ASEAN 50 Lecture Series" in Michaelmas term by hosting several blog pieces and interviews with visiting speakers on their website.

In the lead up to our first public event of 2018, SEAC worked closely with another student led initiative called "Lectures+", a programme dedicated to undergraduate

students and interdisciplinary learning that taps into LSE's rich public lecture series. SEAC also continues to involve LSE's postgraduate community in its events and activities, in particular by inviting PhD students working on relevant topics to attend and participate in both SEAC Cove Sessions, as well as other academic workshops and events throughout the year.

These initiatives aim to improve the LSE student experience by catering for and supporting student interest in academic events and other activities with a focus on the Southeast Asia region.



© Amartey Photography

# FOUNDING GIFT

“ I am delighted to support the establishment of this Centre to enable LSE to consolidate and strengthen its education and research on the Southeast Asia region among students, researchers and faculty members. A deeper understanding of the 10 countries with diverse political and economic systems, bonded together by ASEAN, will engender lasting benefits to the School's academic community and graduates viewed in terms of the increasingly inter-dependent world economy and a further rise of Asia in the years ahead. ”

**Professor Saw Swee Hock**

**Professor Saw Swee Hock is an esteemed alumnus of LSE (PhD in Statistics, 1963) whose generous gift in July 2014 enabled the establishment of the LSE Saw Swee Hock Southeast Asia Centre.**

Professor Saw has held academic positions at the University of Malaya in Kuala Lumpur, the University of Hong Kong, and the National University of Singapore (NUS). His publications centering on statistics, demography and economics include some 49 authored/edited books, 31 book chapters and over 110 articles, with part of his research work devoted to the Southeast Asian region.

Professor Saw is well known for his philanthropic endeavours, particularly in the area of tertiary education. He has generously supported universities in Singapore, Hong Kong, China and England to advance higher education, research, and social mobility among less privileged students. A loyal donor to LSE, Professor Saw has supported scholarships through the Singapore LSE Trust, the LSE Asia Forums in Singapore

and Beijing, the British Library of Political and Economic Science, the New Academic Building and the Saw Swee Hock Student Centre. His other alma mater, the NUS, has received a major share of his gifts, the largest towards the establishment of the NUS Saw Swee Hock School of Public Health.

Currently Professorial Fellow at ISEAS-Yusof Ishak Institute, Professor Saw has received numerous accolades for his philanthropic and academic achievements. He was named Honorary Professor of Statistics at the University of Hong Kong, Honorary Professor at Xiamen University and President's Honorary Professor of Statistics at NUS. He was made an Honorary Fellow at LSE and an Honorary University Fellow of the University of Hong Kong. Professor Saw was conferred the Outstanding Service Award by NUS, the Singapore President's Award for Philanthropy and the Public Service Medal (PBM) by the Singapore Government in the 2013 National Day Awards, and was named as one of the "48 Heroes of Philanthropy" in the Asia-Pacific Region by *Forbes Asia* magazine in 2014. In 2015, he was conferred the Honorary Doctor of Letters by NUS and the Distinguished Alumni Leadership Award by LSE.





### The London School of Economics and Political Science

The London School of Economics and Political Science (LSE) is a world-leading university specialising in social sciences, with a global community of people and ideas that transform the world.

Founded in 1895, LSE's mission is to transform people and societies by understanding the causes of things. The School's research and teaching focuses on major global issues, including the economic threat of climate change, social and economic inequality across the world, economic growth and development, risk in financial markets and structures, global health and the future of our cities.

In addition to the cosmopolitan faculty and students who make it an international community rooted in London, LSE also has academic links to a number of high-quality overseas universities. The School has particularly strong ties to the National University of Singapore, Columbia University, Peking University, University of Cape Town and Sciences Po – operating double degrees, student exchanges and summer school programmes.

### Institute of Global Affairs

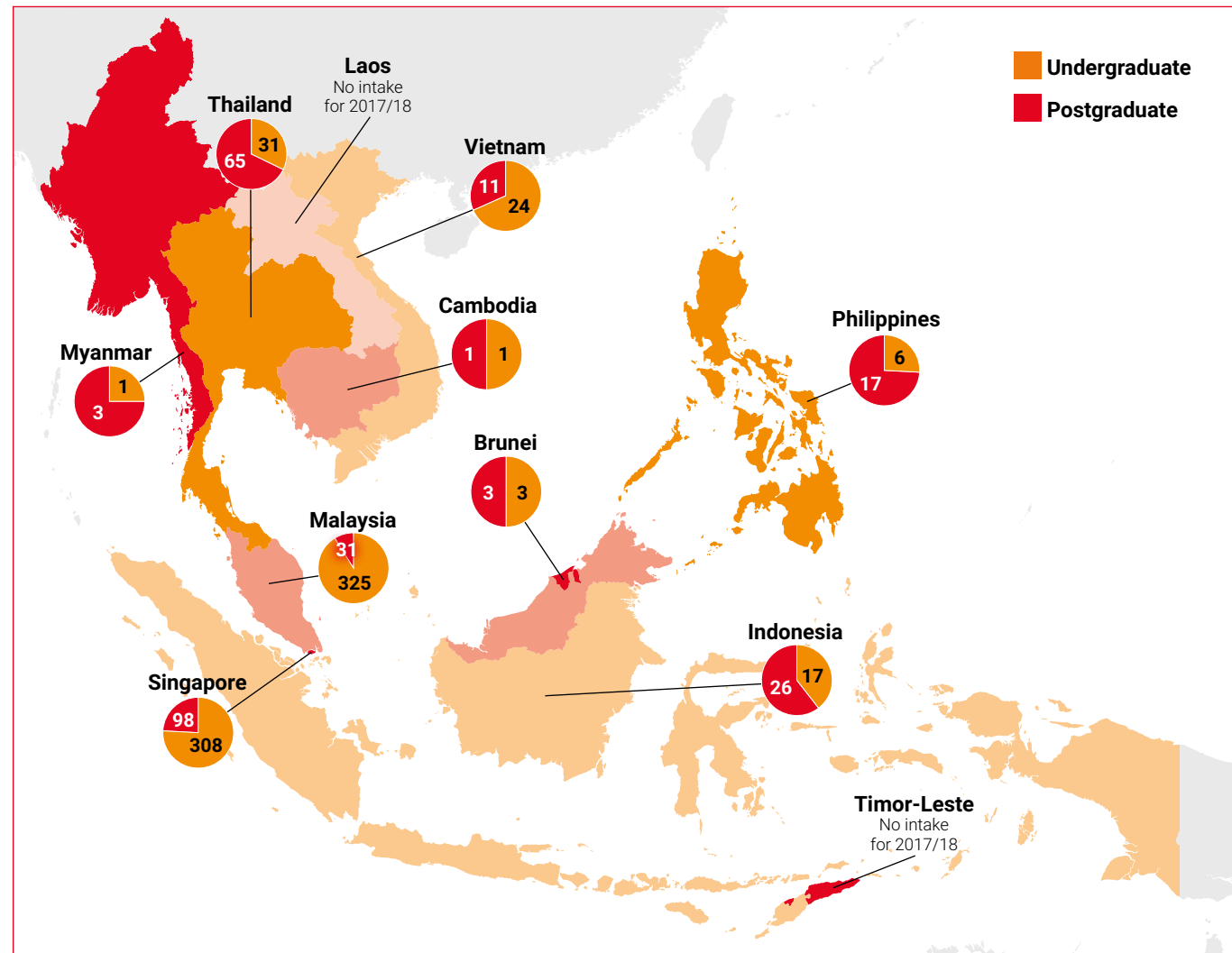
The Institute of Global Affairs (IGA) aims to build a vibrant intellectual environment for original, rigorous and significant thinking and broader impact in London, but also to form an alliance of centres of excellence in research and policy thinking in emerging economies. By employing multidisciplinary approaches and encouraging evidence-based policy making, it also aspires to promote deeper understanding and peer-to-peer transfer

of knowledge across emerging and developing economies. The IGA wants to offer a "safe space" that is open, fair and transparent and where students, government, private sector and civil society from all around the world can meet to address the challenges of the 21st century.

The IGA engages ten LSE departments and currently has eight constituent or affiliate centres:

- Centre for Women, Peace and Security
- Firoz Lalji Centre for Africa
- Latin America and Caribbean Centre
- LSE IDEAS
- Middle East Centre
- Saw Swee Hock Southeast Asia Centre
- South Asia Centre
- United States Centre.

### LSE Students from Southeast Asia in 2017/18







THE LONDON SCHOOL  
OF ECONOMICS AND  
POLITICAL SCIENCE ■

**LSE Saw Swee Hock  
Southeast Asia Centre (SEAC)**

9th Floor, Tower 1  
Clement's Inn, London  
WC2A 2AZ

Facebook: [facebook.com/LSESEAC/](https://www.facebook.com/LSESEAC/)  
Twitter: [twitter.com/LSESEAC](https://twitter.com/LSESEAC)  
Medium: [medium.com/@lseseac](https://medium.com/@lseseac)

**Contact**

[seac.admin@lse.ac.uk](mailto:seac.admin@lse.ac.uk)  
Tel: +44 (0)20 7955 6952  
Fax: +44 (0) 20 7691 7061  
[lse.ac.uk/seac](https://lse.ac.uk/seac)