



THE LONDON SCHOOL
OF ECONOMICS AND
POLITICAL SCIENCE

Executive Master of Public Administration

Executive MPA

LSE School of Public Policy
Transforming people and societies

Contents



Thinking differently in a brave new world **1**

Why LSE? **3**

About the EMPA **5**

Courses on the EMPA **7**

Option courses **9**

Our EMPA student body **11**

Connecting with employers and alumni **12**

The EMPA faculty **15**

Admissions **17**

Our mission statement

The LSE School of Public Policy prepares the policy and political leaders of tomorrow to transform people and societies. The foundation is rigorous training in theory and quantitative methods. The outlook is global – reflected not only in the diverse national origins of our students and faculty, but in the places we look for policy challenges and solutions. We aim for impact, engaging policymakers from around the world. At a time when the practice of good governance is being eroded, experts derided and societies polarized, the LSE School of Public Policy is committed to the promotion of democratic values and the use of reasoned judgement in the pursuit of public service.



Thinking differently in a brave new world

1

Traditionally, you'd have to give up your career to study. But in a world where the challenges of policy making are multiplying and increasing in complexity, we think a different approach makes sense.

Our Executive Master of Public Administration (EMPA) is the first of its kind to help busy policy people get a properly rigorous university degree while continuing to work.

It's a challenge. Balancing a busy work and academic life puts demands on your time. But the EMPA is a once-in-a-lifetime opportunity.

The quality of the teaching here is what you'd expect from a top-ranked institution. But unlike other universities and schools, LSE is unique in shining a light on how world-class research is applied in the real world.

When you study for the EMPA, you'll interact with policy-making professionals and get to learn first-hand how they approached some of the most challenging policy issues of our time. You'll also get the chance to deepen your own understanding of the subjects that matter to you and your organisation.

Your time on the EMPA will help you think differently about policy challenges and allow you to be a more effective policy maker now and in the future.

Above all, you'll leave LSE with an evidence-based toolkit that you can rely on again and again to make the toughest decisions. Whether you're self-funding or sponsored by an employer, that makes you highly valuable and well-positioned to drive your organisation to new levels of success.



We hope you'll join us.

Professor Andrés Velasco,
Dean of the LSE School of Public Policy



“

The EMPA offered the right combination of rigour, flexibility, and exposure to international networks of academics and fellow students. The EMPA has greatly accelerated my analytical capabilities, and made me a much smarter consumer of academic literature and better able to interpret ambiguous data. It's helped me tackle challenges I face in my day job in a much more sophisticated way. ”

Samir Khan
EMPA Class of 2017





Why LSE?

3

Our calibre of students

We only take students who want to participate, engage and challenge at every turn. You'll be working side-by-side with people who've already made a mark in the policy world and are looking to tackle the most pressing issues head on.

Our global standing and outlook

People flock to LSE from all over the world. We have students from over 160 countries speaking more than 100 languages. This gives you a truly global perspective on the problems and challenges you're here to learn about.

Our reputation for research and teaching

Most of our academics are engaged in research and play a key role in advising and consulting on policy matters. This filters back down into the classroom, where you'll absorb the very latest thinking within the context of real-world events.



Our fabulous location

London is one of the most vibrant, cosmopolitan cities in the world with an amazing social and cultural scene. We're moments from the West End and the City of London, and surrounded by theatres, coffee shops, museums and galleries.

Our connections with the world outside

We enjoy a healthy dialogue with influential organisations and institutions from all sectors. This gives you access to a network of connections for future career opportunities. It also keeps our teaching informed and relevant.



“

It is difficult to put into words what I gained from the EMPA. The course exceeded my expectations. It equipped me with the knowledge and tools I needed to effectively work in the public policy field. It has enhanced my knowledge of international politics and given me a toolkit to develop robust public policy in differing cultural environments. ”

**Sade Olapade-Olaopa,
EMPA Class of 2018**





About the EMPA

5

Gain a world-class policy qualification from LSE without stopping work

Our EMPA is a flexible degree programme that allows you to get a world-class graduate qualification in public administration and policy-making without taking a break from your career.

You'll benefit from the same rigorous training in economics, politics and policy evaluation that students enjoy on our full-time MPA programme. But instead of studying full-time for two years, you'll split your learning into eight intensive blocks spread over 22 months.

Because you can continue to work alongside this programme, you'll be able to deploy new skills immediately. This makes you more profitable as an employee, and gives you extra confidence, technical knowledge and added practical understanding in your daily job.

Best of all, because we only accept the highest-achieving students onto the EMPA, you'll leave LSE with an outstanding network of friends and contacts who are destined to be future leaders in governments, institutions and private businesses around the world.

How the programme is taught and assessed

The EMPA is an intensive programme and you'll be required to absorb a lot of information both on and off campus. Each teaching block at LSE lasts between three and five days. We combine this modular approach with extensive online resources to support you the rest of the time.

You'll be able to send emails to staff whenever you want. Through our online portal, you'll also be able to participate in group sessions and stay in touch with the other students on the course – so you'll always feel connected.

We assess you through a combination of written assignments and exams. You'll submit these online, three to six weeks after finishing each module.

Before you start

We'll send you a link to our online learning zone so you can get ahead with essential reading and start thinking about the programme ahead of you.

In the months and weeks before term starts, we'll give you material to help you prepare. As part of the programme, you'll complete a short introduction to statistics course. This doesn't count towards your degree. It's just to make sure you have the necessary core skills for our analytical courses.





Courses on the EMPA

7

The EMPA is divided into:

- **an introduction to policy workshop:** provides you with the foundations for analysing public policy questions
- **three core modules:** building on these foundations you'll develop skills in the empirical, political and economic analysis of public policy
- **two policy in practice workshops:** you'll apply those skills to current policy challenges
- **two option modules:** you can choose topics that are either relevant to your current career or subjects you're passionate about

Core courses

Introduction to public policy

This course provides you with the foundations for analysing public policy questions. You'll learn how to think about situations where there are competing interests and how incentives affect behaviour. You'll learn when markets deliver good outcomes and when they don't, justifying intervention or regulation.

Introduction to statistics

This course makes sure you're up-to-speed with basic concepts before continuing with the EMPA. Students who have been out of education for a while or don't use maths or statistics much in their day job will find this particularly useful.

Political science and public policy

Understand and analyse the political context of policy making. You'll question how voting behaviour, elections and lobbying influence electoral systems and institutions. You'll also learn why political behaviour leads to certain outcomes.

Empirical methods for public policy

Learn about practical applications for state-of-the-art empirical methods, starting with an overview of the benefits of randomised experiments. We'll also look at a number of other widely used empirical approaches to determine the effectiveness of public policy interventions.

Economic policy analysis

Elevate your knowledge of micro- and macro-economics and make better policy decisions. You'll learn about sound models and methods that can be used to appraise policy-making issues in a variety of circumstances.



“

The EMPA was a door opener for my position as the Vice Director of the Swiss State Secretariat for Migration and Head of the Migration and Integration Division. It encouraged me to shift from the traditional administrative approach focusing on issuing permits to modern migration management with a dynamic and inspiring working environment that understands trends in data and initiates strategic processes.”

Corneila Lüthy,
EMPA Class of 2015





Option courses

9

Workshops

Public policy in practice workshops

This is your chance to put into practice concepts you've learned in the core week-long modules. Looking at case studies and working in groups, you'll get to cross-examine specific policy issues under the expert guidance of leading academics and policy practitioners.

You'll take two option courses during the second year. You can choose from the following to customise your EMPA.

Option courses

Global market economics

Take a closer look at the economic interdependence between countries in a global economy. This course focuses on the structure and geography of world trade, as well as analysing macroeconomic issues like the effect of capital flows and exchange rates.

Public economics

Get a better understanding of what we know and don't know in public economics. You'll study topics like tax policy, social insurance and minimum wages in the context of current policy questions, and look at the surrounding empirical and theoretical evidence.

Regulatory analysis

Learn how to successfully evaluate public policy interventions. Focusing on a range of topics including health, education and crime, you'll assimilate the analytical tools to assess the efficiency of these interventions, before looking at issues of inequality and poverty.

Fiscal governance and budgeting

Examine the contemporary issues in fiscal governance. With a focus on the institutional structures that shape budgetary choices, you'll learn more about topics like medium-term frameworks, top-down budgeting, fiscal rules, fiscal decentralisation, and auditing.

Development economics

Learn what drives policy decisions in developing countries. Focusing on key topics like trade liberalisation, access to finance, technology adoption and education, you'll gain the theoretical and empirical skills to engage in rigorous analysis anywhere in the developing world.



“

The EMPA offered the opportunity to take my skills to a new level. The tools learnt as well as the international exposure re-shaped my thinking to be more analytical and critical, which are two of the key means to progress in my position as a UN Legal Officer. Working in an organisation like the UN requires you to go beyond silo thinking. Problems have to be addressed from all angles, and the EMPA trained me to do so in a very efficient and targeted way. ”

Luisa Rodriguez Lucas,
EMPA Class of 2017





Our EMPA student body

11

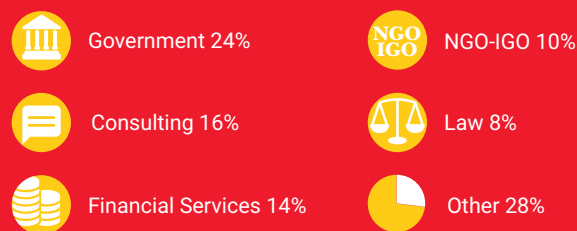
Average age and range of our EMPA student body



Gender



Professional background 2023 intake



Since 2013 the 'other' sectors have regularly included: arts, consumer goods, e-commerce, education, engineering and construction, entrepreneurship, interest and lobby groups, international development, manufacturing, marketing, media, military, mining and commodities, oil/gas/energy, politics, regulation, technology, and transport.

Nationality



71 nationalities 2013 - 2023



Connecting with employers and alumni

LSE attracts the brightest students from around the world, many of whom already have considerable experience in policy-making. As a student on the EMPA, you'll be able to tap into those connections.

We run a host of activities and events through the School of Public Policy, as well as in conjunction with LSE Careers and other executive programmes. There are numerous networking and speaker events where you'll be able to meet inspirational people from the policy world.

All LSE students can benefit from free advice on careers from the LSE Careers Service. You'll also get help from:

- LSE Life advisers, who are on hand to assist with anything from brushing up on MS Excel skills to life coaching sessions
- staff on the EMPA programme, who offer dedicated one-to-one executive coaching and soft skills workshops

You can read more about these services on our website: info.lse.ac.uk/Current-Students



Brittany Venhola-Fletcher, Spokesperson at Global Affairs Canada

EMPA Class of 2018

Why did you choose the EMPA?

I chose the EMPA because I wanted to join a programme that would allow me to grow professionally and academically. At the same time, I didn't want to lose the job I worked so hard to get. That said, I also wanted to attend a world-class institution and expand my network to meet other executives. Basically, I wanted to have my cake and eat it too! LSE was able to accommodate all of these things, so that's why they were the winner. Having an excuse to fly to London didn't hurt either.

How has the EMPA influenced your career?

I think the quicker question would be how the EMPA hasn't helped my career! While I was studying in the programme, I was promoted to a senior level spokesperson for my department. Because I handle foreign policy issues, the programme has helped me understand, summarize and advise on complex economic and public policy issues. This degree has also helped me branch out of my current position. For example, I spent time on a diplomatic posting at the Canadian Consulate in New York.

What was your favourite thing about the EMPA?

Definitely my classmates. They were amazingly friendly, worldly and knowledgeable, so I learned a great deal from their experiences. In our class we had engineers, investors, bankers, as well public sector professionals, so their perspectives not only provided a glimpse into the world but their experiences helped us learn from one another. I would also be remiss if I did not mention the amazing LSE staff. Their understanding, helpfulness, and timeliness were invaluable to my experience.

What advice would you give to an incoming EMPA student?

It's a very obvious one but ensure that you make time for yourself. Between studying, working, friends, and family, it's easy to lose time for yourself. I definitely underestimated how much time studying would take. One of my friends gave me really good advice which is to print out a monthly schedule and write down your study times and make sure not to break them. That way you will have time for the things you love.



“

The EMPA offered access to a world-class community of teachers and students and an opportunity to strengthen my network as well as my professional background. The interdisciplinary training in economics and political science shaped the way I see policy challenges and how I tackle them.”

Marcel Fukayama,
EMPA Class of 2017



The EMPA faculty

Who'll be teaching you

The lecturers, assistant professors and professors on the Executive MPA are all recognised experts in their field and include some of the leading lights in global economic, public and social policy thinking. They include:

15



Professor Sir Charles Bean

Department of Economics



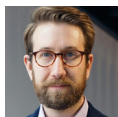
Dr Swati Dhingra

Department of Economics



Dr Paolo de Renzio

International Budget Partnership



Dr Daniel Berliner

Department of Government



Professor Conor Gearty

LSE Law School



Dr Sandra Sequeira

Department of International Development



Professor Andrew Bernard

Dartmouth College



Professor Sara Hobolt

Department of Government



Pol Simpson

Department of Economics



Professor Sir Tim Besley

Department of Economics



Dr Xavier Jaravel

Department of Economics



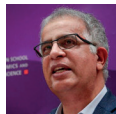
Professor Daniel Sturm

Department of Economics



Dr Sarah Brierley

Department of Government



Professor Adnan Khan

School of Public Policy



Professor Andrés Velasco

School of Public Policy



Dr Michael Callen

Department of Economics



Professor Martin Lodge

Department of Government



Dr Joachim Wehner

Department of Government



Professor Stephan Chambers

LSE Marshall Institute



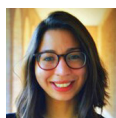
Dr Joana Naritomi

Department of International Development



Professor Davin Chor

Dartmouth College



Dr Victoria Paniagua

Department of International Relations





Admissions

17

You can read more about how to apply at lse.ac.uk/school-of-public-policy/empa/how-to-apply

If you have any questions about the programme, email **Spp.Exec.**

Admissions@lse.ac.uk.

You're welcome to book an appointment to visit us on campus or talk to someone about course content, fees or any other admissions queries.

Entry requirements

You'll need:

- a 2:1 degree or equivalent in any subject
- at least five years' post-degree work experience
- a good level of written and spoken English – visit lse.ac.uk/study-at-lse/Graduate/Prospective-students/Entry-requirements/English-language-requirements for more information
- two references, including one non-academic reference (eg, for example a recent employer)
- a personal statement
- your resume or CV

If your qualifications or experience are slightly below the requirement, we would encourage you to contact the EMPA programme team at **Spp.Exec. Admissions@lse.ac.uk** to discuss options. We can take into consideration mitigating factors for not meeting requirements, and compensating factors such as relevant professional experience and a candidate's potential.

When to apply

There's no deadline for applications. You should try to apply as soon as possible after applications open in October for the best chance of being considered. There are limited places on the EMPA and we can't consider applications after those have been filled.

Tuition costs and help with fees

Fees for the programme are £38,820 for all students payable £19,410 per academic year (entry in 2024). You can pay your fees in six instalments over the 22 months if you want to. For more information on funding and financial assistance, visit lse.ac.uk/study-at-lse/Graduate/fees-and-funding



THE LONDON SCHOOL
OF ECONOMICS AND
POLITICAL SCIENCE ■

School of Public Policy
The London School of Economics
and Political Science
Houghton Street
London WC2A 2AE

Email: Spp.Exec.Admissions@lse.ac.uk

lse.ac.uk/school-of-public-policy



This brochure can be made available
in alternative formats, on request.

Please contact: Spp.Exec.Admissions@lse.ac.uk

The London School of Economics and Political Science is a School of the University of London. It is a charity and is incorporated in England as a company limited by guarantee under the Companies Acts (Reg no 70527).

The School seeks to ensure that people are treated equitably, regardless of age, disability, race, nationality, ethnic or national origin, gender, religion, sexual orientation or personal circumstances.

Design: LSE Design Unit (lse.ac.uk/designunit)

Photography: cover: Kid Circus at Unsplash, inside: Simon Jarratt, Maria Moore, Suzanne Plunkett and Nigel Stead (LSE School Photographer).