

Department of Anthropology public conversation



Department of  
Anthropology

## Alternatives to Austerity?

### Dr Laura Bear

*Associate Professor of Anthropology, LSE  
Author of Navigating Austerity*

### Dr Andrea Muehlebach

*Associate Professor of Anthropology,  
University of Toronto*

### Professor Deborah James

*Professor of Anthropology, LSE. Chair*

### Anna Coote

*Head of Social Policy,  
New Economics Foundation*

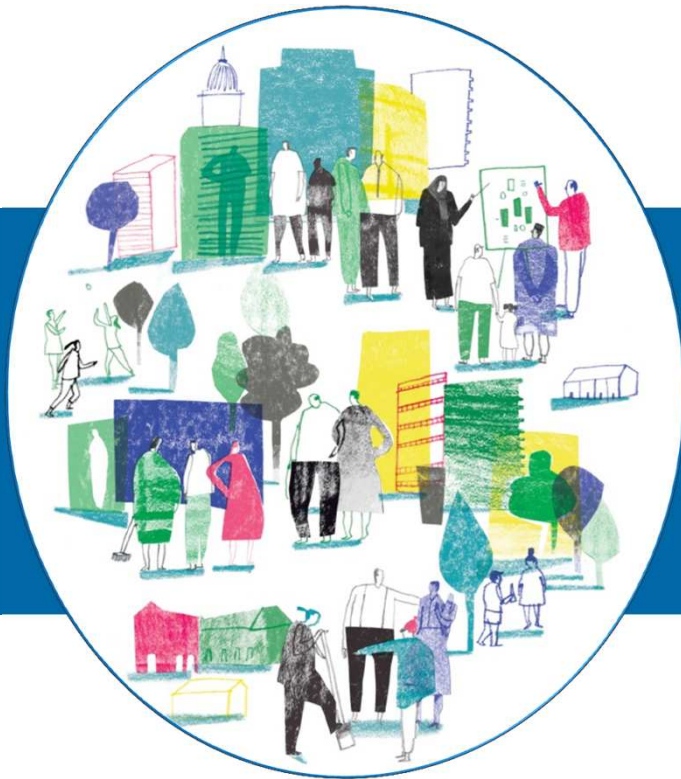
### Dr Carly Schuster

*Lecturer and Researcher,  
Australian National University*



Hashtag for Twitter users: #LSEausterity





# PEOPLE, PLANET, POWER Towards a New Social Settlement

Anna Coote  
New Economics Foundation

# What's the problem?

**Widening inequalities in income, wealth and power**

**Unstable economy, no prospect of return to 'business as usual'**

**Accelerating climate change and destruction of the natural environment**

**A toxic combination unique in human history**



# Goals of a new social settlement



- 1. Social justice**
- 2. Environmental sustainability**
- 3. A more equal distribution of power**



# Priorities for policy and practice



1. Plan for prosperity without growth
2. Shift investment and action upstream to prevent harm
3. Nurture the 'core economy'
4. Foster solidarity

# Proposals for practical change



- 1. Rebalance work and time**
- 2. Release human resources**
- 3. Strengthen social security**
- 4. Plan for the future**

# Rebalance work and time



- Secure, satisfying, sustainable work for all
- **Shorter, more flexible hours of paid work**
- Decent hourly rates of pay
- Universal, high-quality childcare

# Release human resources



- **Value and nurture the core economy**
- **Promote co-production**
- **Commission services for outcomes and co-production**



# Strengthen social security



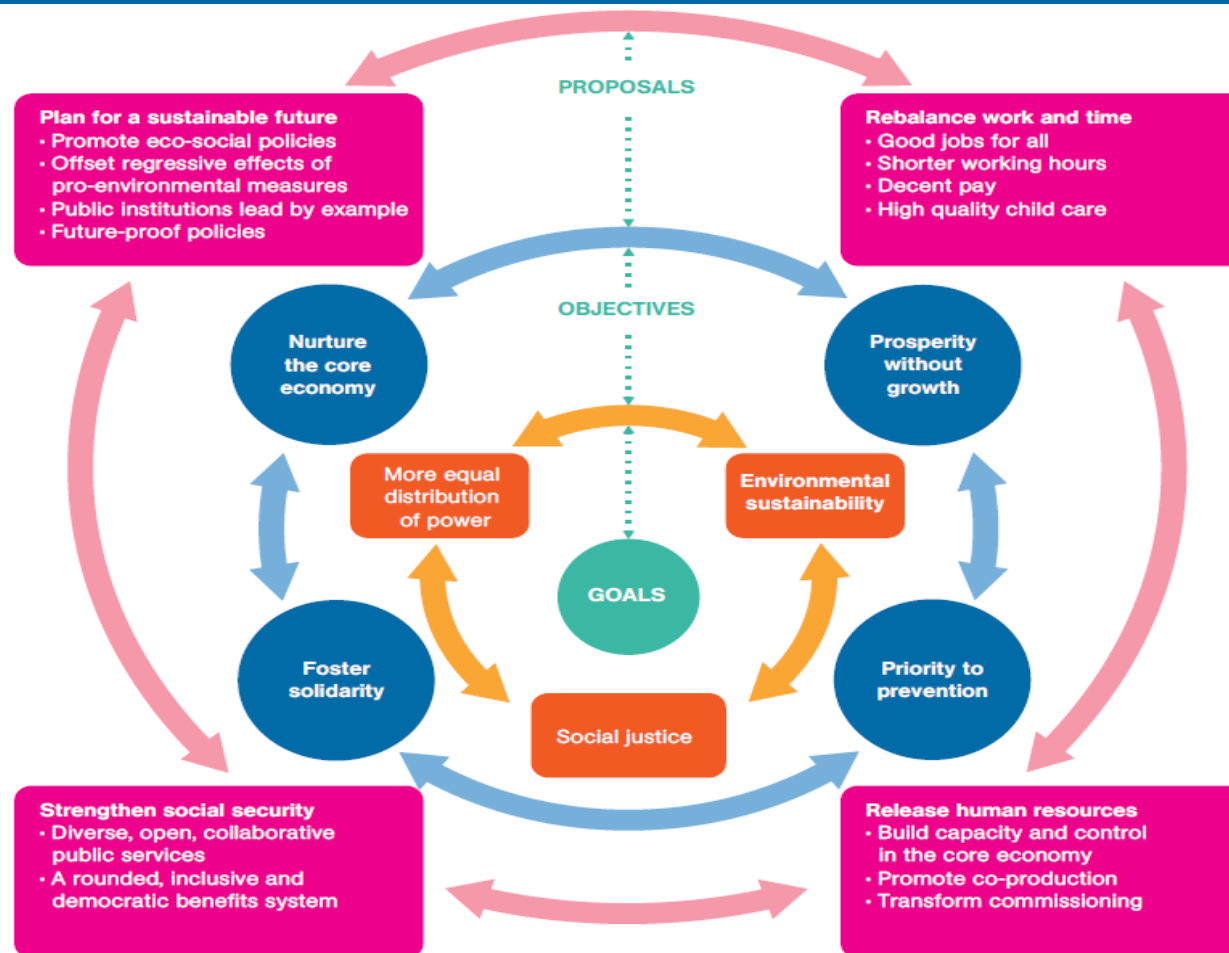
- More diverse, open and collaborative public services
- A more rounded, inclusive and democratic benefits system
- **Transform relations between people and public institutions**

# Plan for the future



- Promote ‘eco-social’ policies
- Off-set regressive effects of pro-environmental measures
- Public institutions lead by example
- **Future-proof policies**

# Here's how it all fits together





**People, planet, power**  
Towards a new social settlement



[www.neweconomics.org](http://www.neweconomics.org)  
[@nefSocialPolicy](https://twitter.com/nefSocialPolicy)



Department of Anthropology public conversation



Department of  
Anthropology

## Alternatives to Austerity?

### Dr Laura Bear

*Associate Professor of Anthropology, LSE  
Author of Navigating Austerity*

### Dr Andrea Muehlebach

*Associate Professor of Anthropology,  
University of Toronto*

### Professor Deborah James

*Professor of Anthropology, LSE. Chair*

### Anna Coote

*Head of Social Policy,  
New Economics Foundation*

### Dr Carly Schuster

*Lecturer and Researcher,  
Australian National University*



Hashtag for Twitter users: **#LSEausterity**

