



Department
of Law

Law Matters public lecture

What is the Welfare State? A Sociological Restatement

Professor David Garland

*Professor of Sociology, NYU and
Shimizu Visiting Professor, LSE Law*

Professor Nicola Lacey

*Respondent. School Professor of
Law, Gender and Social Policy, LSE*

Professor Craig Calhoun

Chair. Director, LSE

Suggested hashtag for Twitter users: **#LSEGarland**

LSE events



Law Matters Public Lecture
LSE

What is the Welfare State?

David Garland
New York University

1. *“Carrying coals to Newcastle”*

(LSE and the Welfare State)

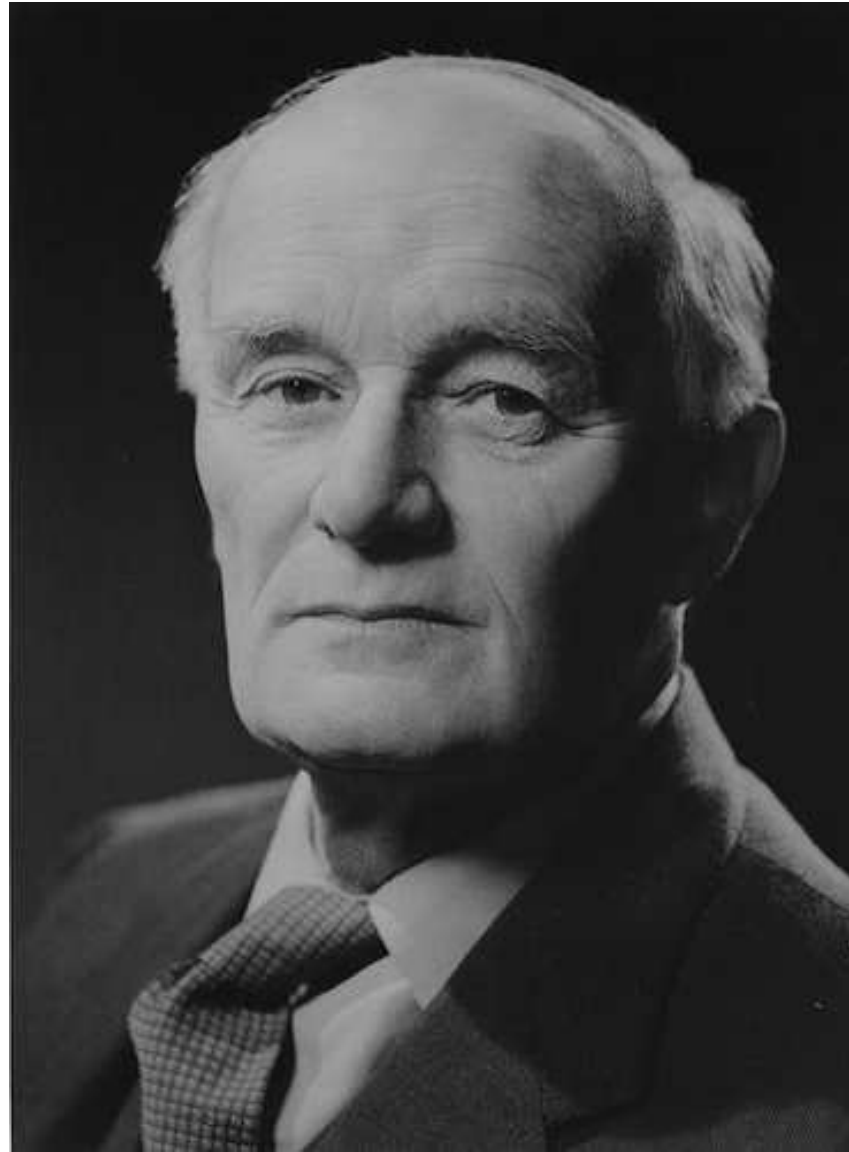


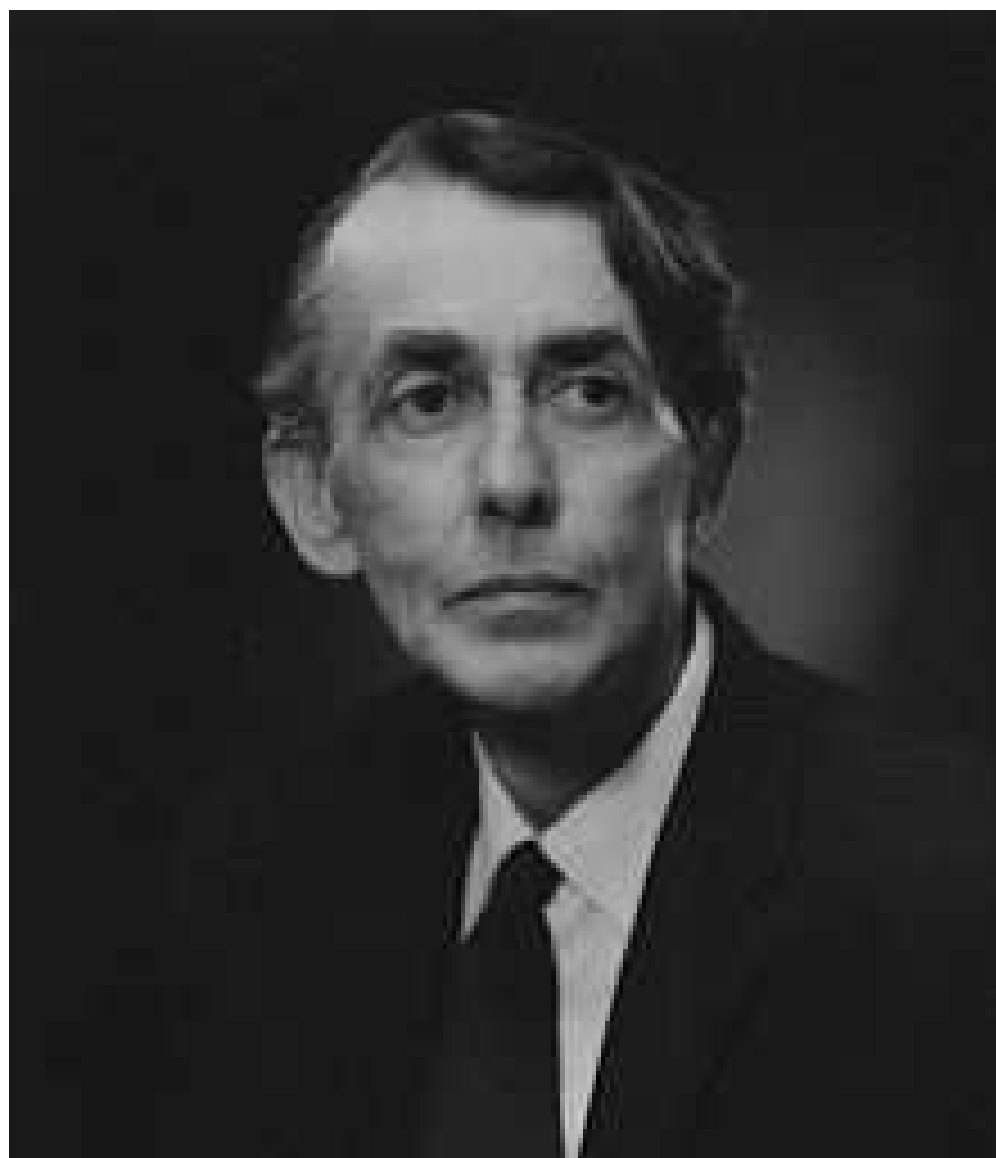


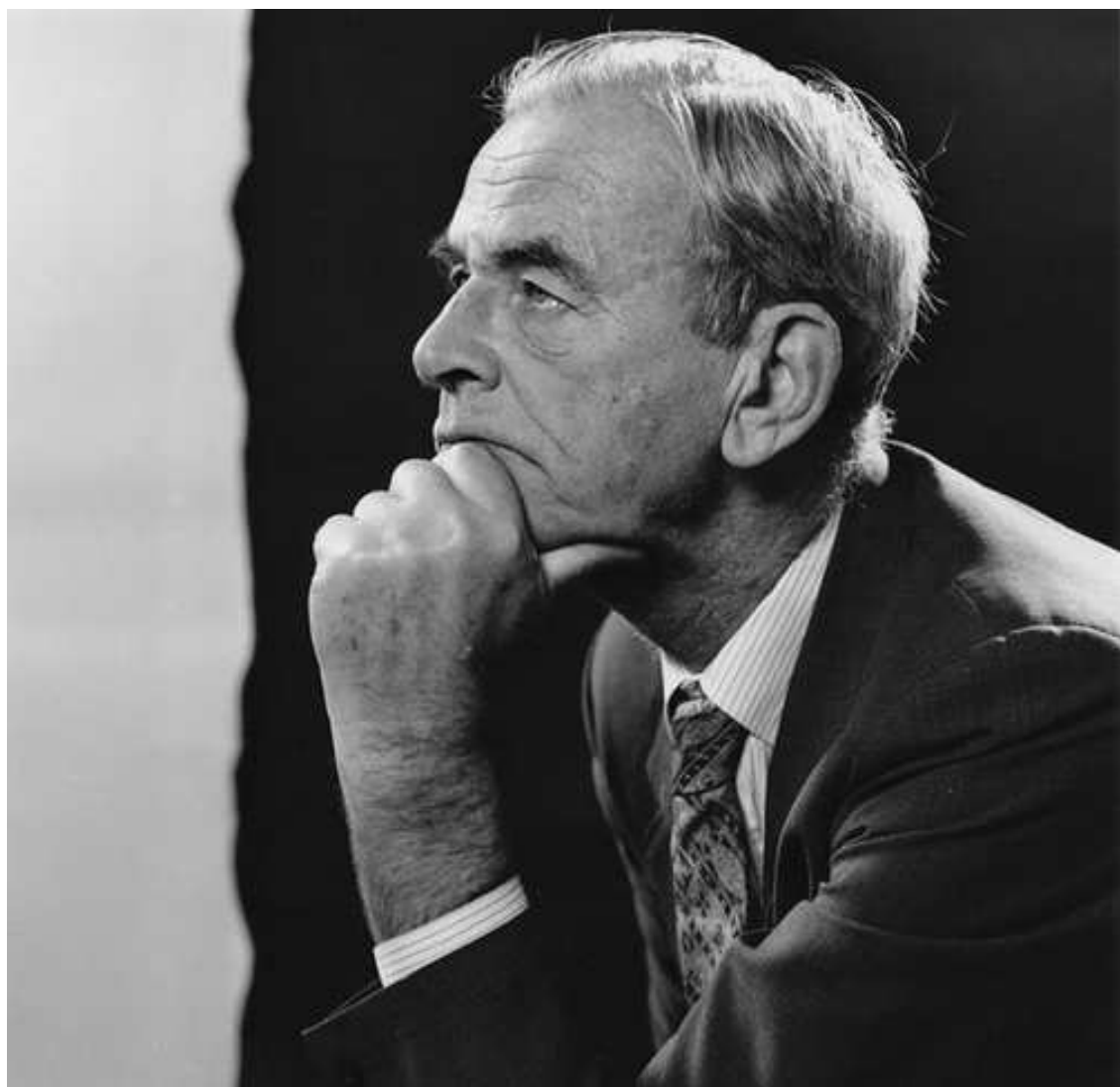


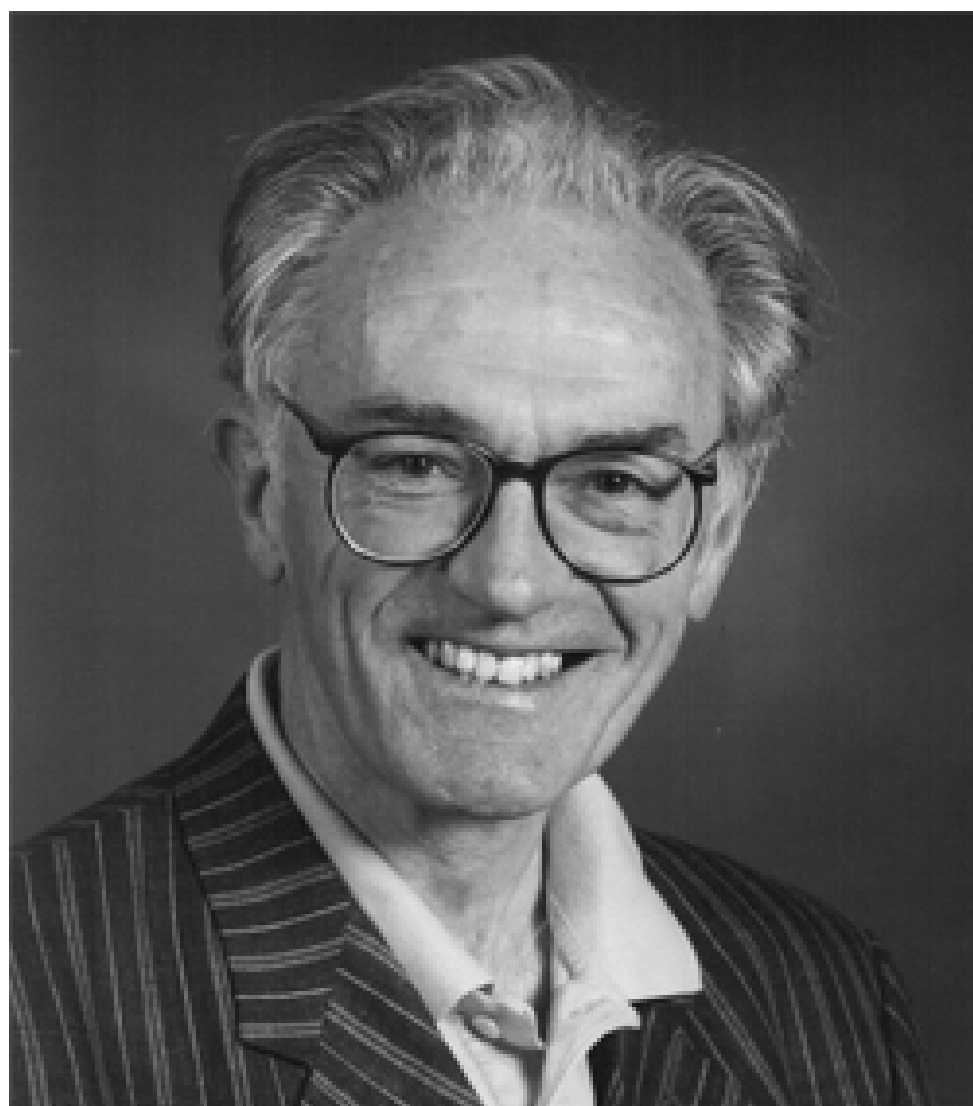












LSE Department of Social Science and Administration, 1971



2. “*The Welfare State*” as misnomer

*Essays
on
'The Welfare
State'*

*Richard M.
Titmuss*

GEORGE ALLEN AND UNWIN LTD

3. Conceptualizing the Welfare State

Three conceptions of the welfare state

1. Welfare for the poor

2. Social insurance and social services

*3. Government at the level of the economy
and the population*

The Welfare State

Government of the economy and the population,

in the interest of security, stability and welfare,

utilizing the tools of insurance, economic management, and social provision,

together with the legal regulations, taxes, and forms of expertise required for their operation.

Welfare State “Governmentality”

(c/f Michel Foucault)

A distinctive mode of government, involving...

*...a specific way of reasoning about and exercising
governmental power...*

*...using specific apparatuses, techniques, and
forms of knowledge.*

4. Problems of the Welfare State

5. The Social Basis of the Welfare State

THE GIFT RELATIONSHIP

from human blood
to social policy

RICHARD M. TITMUSS
on his social philosophy

GEORGE ALLEN & UNWIN

"Elegant meditations on human need. Ignatieff says something concrete and serious about each of his large topics."—Michael Walzer, *The New Republic*



The Needs of Strangers

An essay on privacy, solidarity,
and the politics of being human



Michael Ignatieff

THE SPIRIT OF '45

A NEW FILM FROM KEN LOACH

SPIRIT-2sm.jpeg



MEMORIES AND REFLECTIONS OF THE LABOUR VICTORY 1945

SIXTEEN FILMS FLY FILM BFI FILM4 CHANNEL 4
PHOTOGRAPHY STEPHEN STANDEN MUSIC: GEORGE FENTON FILM ARCHIVIST JIM ANDERSON
RESEARCH IZZY CHARMAN EDITOR JONATHAN MORRIS PRODUCTION MANAGER EIMHEAR MCMAHON
PRODUCES REBECCA O'BRIEN KATE OGBORN LISA MARIE RUSSO
DIRECTOR KEN LOACH

Sixteen FILMS

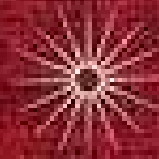


*6. The Welfare State as a Normal Social
Fact*

Emile Durkheim



EMILE DURKHEIM



The Rules of Sociological Method

*The classic discussion of the validity of the application
of scientific techniques to the study of social phenomena*



A FREE PRESS LIBRARY
OF THE UNIVERSITY OF CHICAGO, 1955

The Welfare State as a Normal Social Fact:

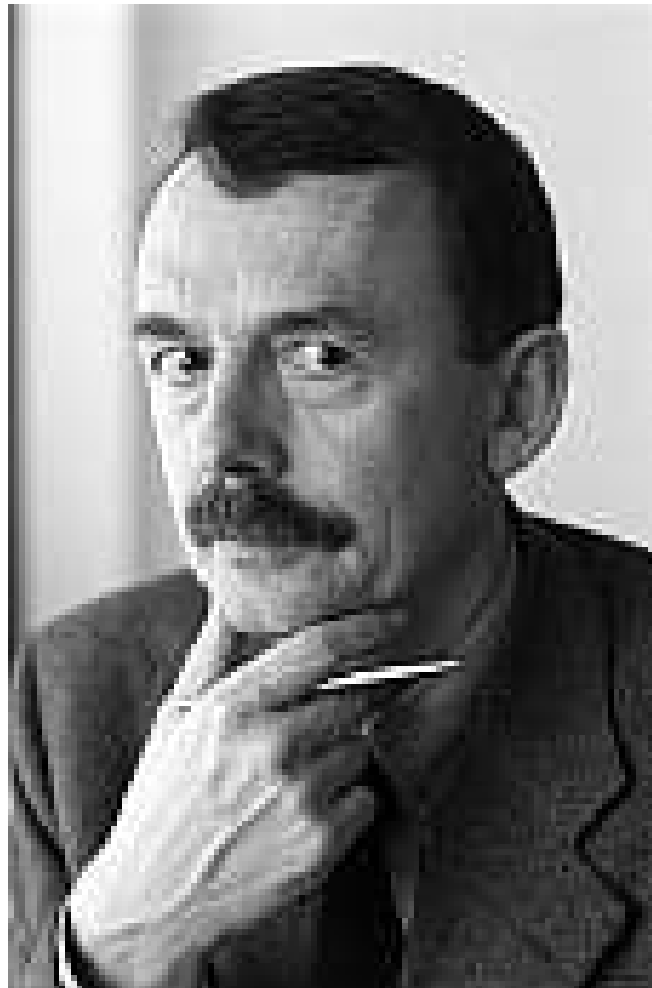
A social fact is normal if....

1. It is present in all such societies at that stage of development and

2. It is bound up with the functioning of society.

“Normal” = functionally essential; integral to social health.

Wolfgang Streeck



Capitalism:

“a society that has instituted its economy in a capitalist manner, in that it has coupled its material provision to the private accumulation of capital, measured in units of money, through free contractual exchange in markets driven by individual calculations of utility”

*(W. Streeck, “How to Study Contemporary Capitalism”, Eur J of Soc
2012)*





Department
of Law

Law Matters public lecture

What is the Welfare State? A Sociological Restatement

Professor David Garland

*Professor of Sociology, NYU and
Shimizu Visiting Professor, LSE Law*

Professor Nicola Lacey

*Respondent. School Professor of
Law, Gender and Social Policy, LSE*

Professor Craig Calhoun

Chair. Director, LSE

Suggested hashtag for Twitter users: **#LSEGarland**

LSE events

