



Department of Social Policy: T H Marshall Fellowships celebration  
and *Oxford Handbook of the Welfare State* launch

# Welfare State Reform Over the (Very) Long-run

**Professor Paul Pierson**

*Professor of public policy, holder of the Avic  
Sarint Chair of Public Policy, Berkeley*

**Professor Julian le Grand**

*Titmuss Professor of Social Policy, LSE*

**Professor Anton Hemerijck**

*Secretary of the Scientific Council for Government  
Policy in the Netherlands, Professor of  
Comparative Analysis of the European Welfare  
State at the Erasmus University of Rotterdam*

**Professor Howard Glennerster**

*Chair, LSE*

# The Welfare State over the (very) Long Run

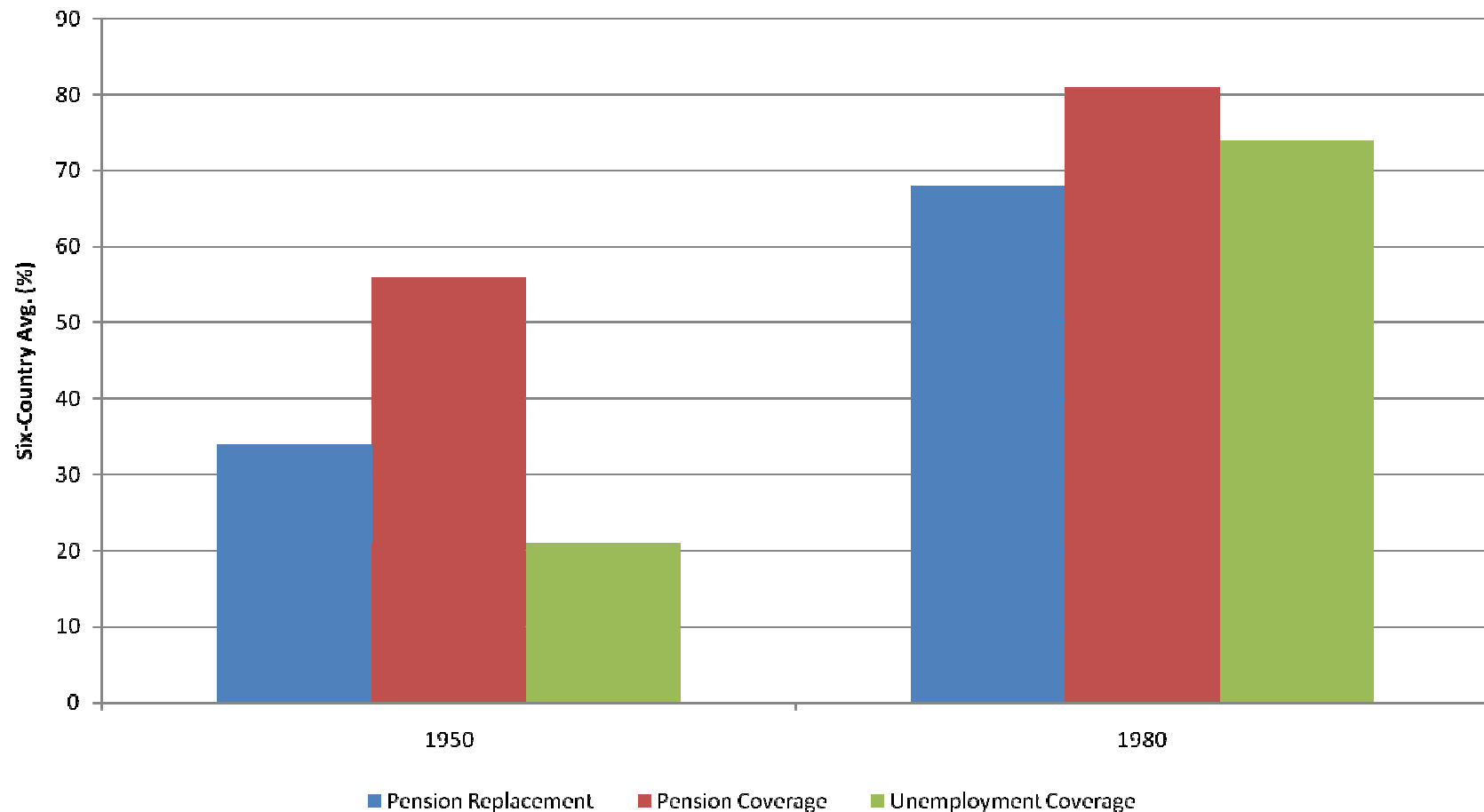
Paul Pierson

UC Berkeley

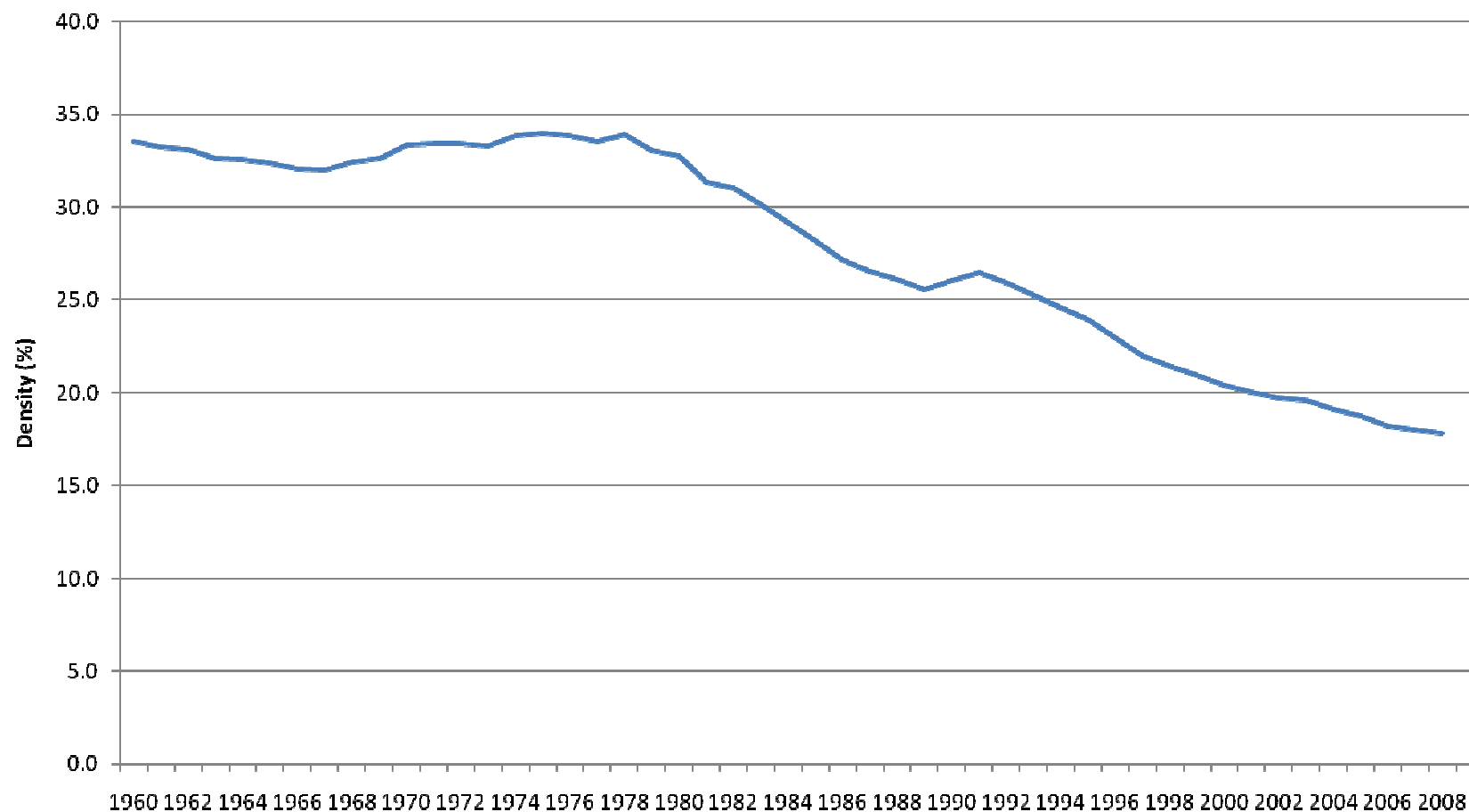
November 2010

# Welfare State Expansion, 1950-1980

## (Ger., Sweden, US, UK, NL, IT)



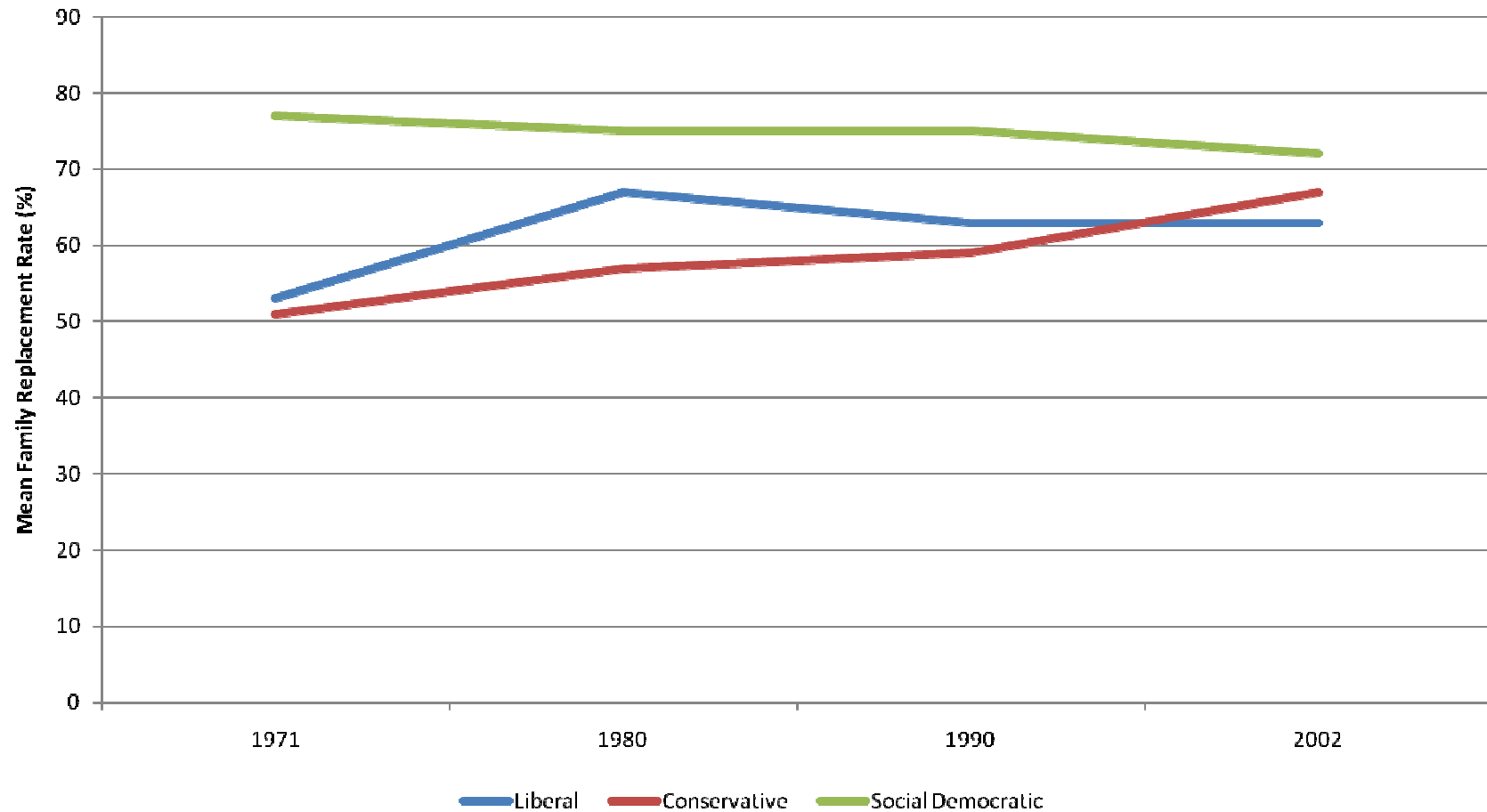
# Union Density, OECD, 1960-2008



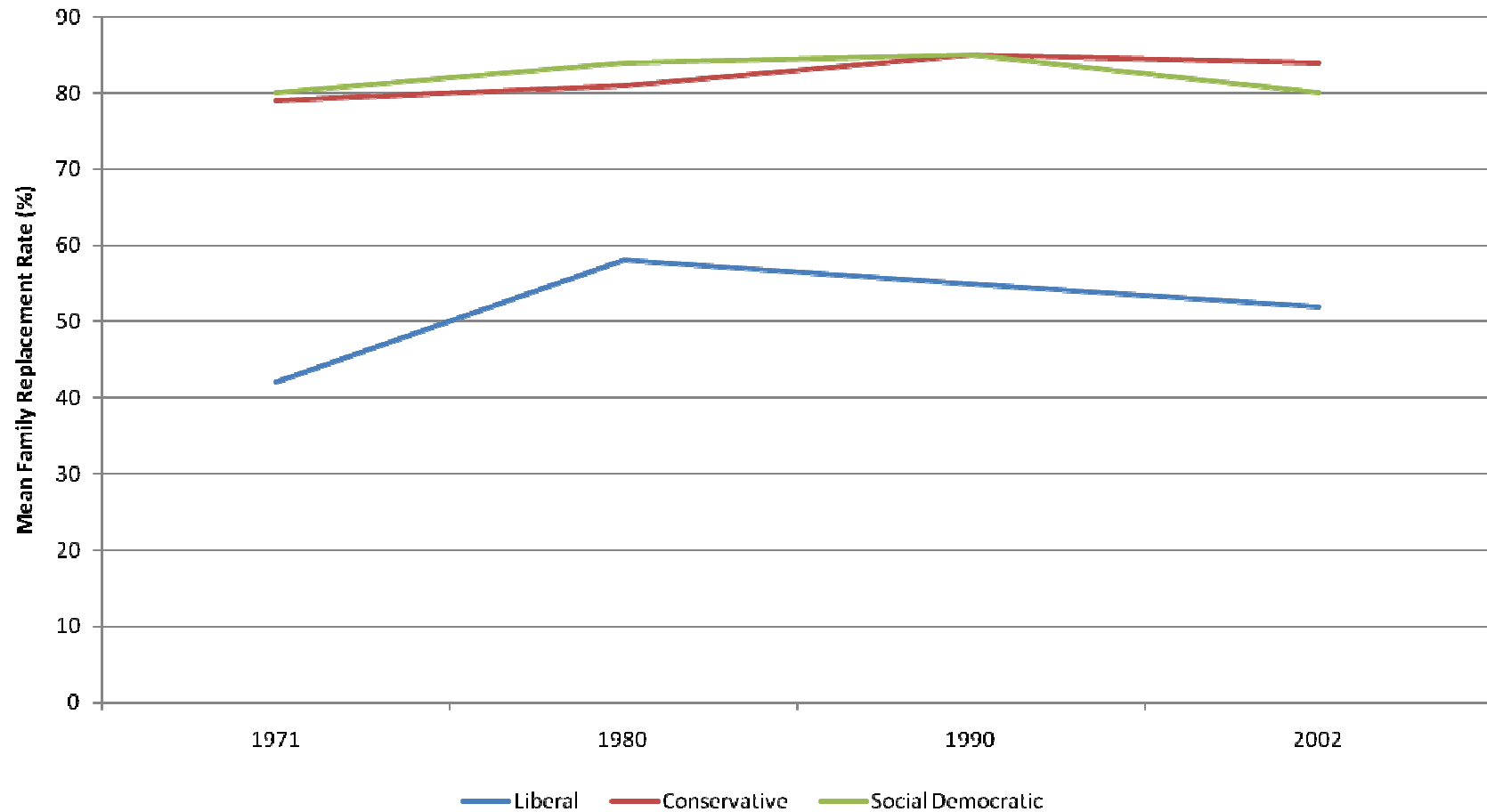
# DOG BITES MAN



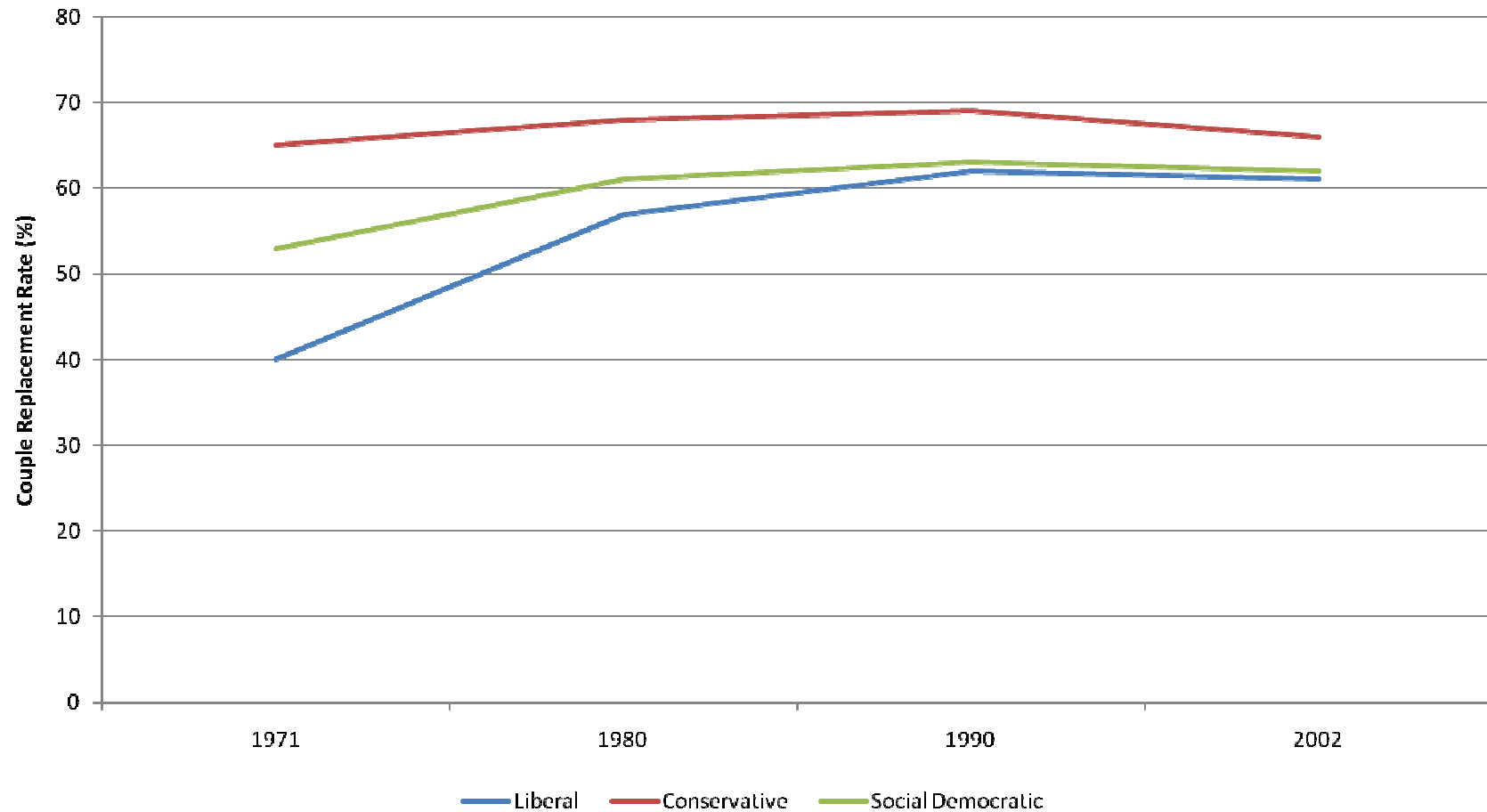
# Unemployment Benefit, 1971-2002



# Sickness Benefit 1971-2002

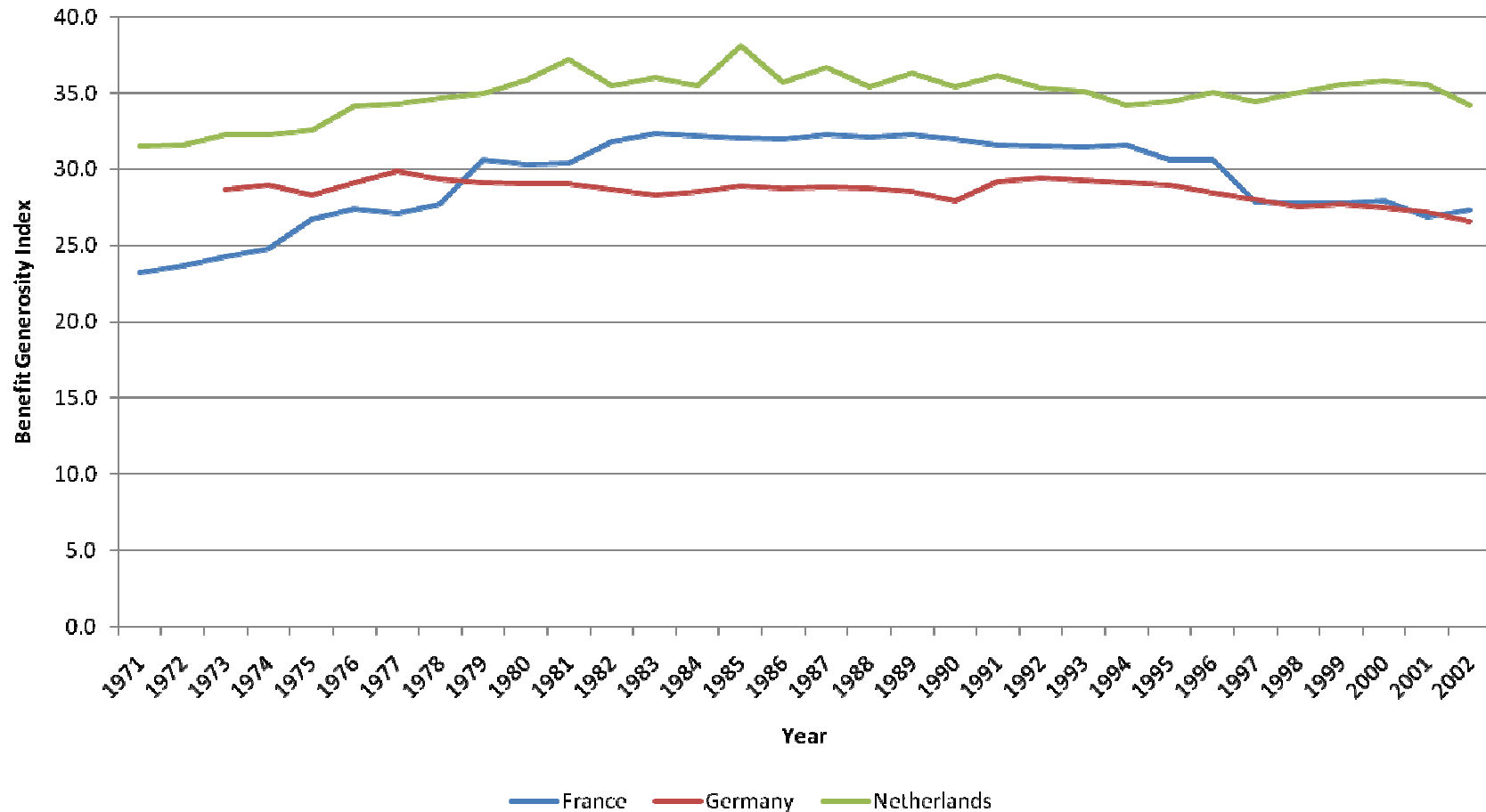


# Standard Pension Benefit, 1971-2002

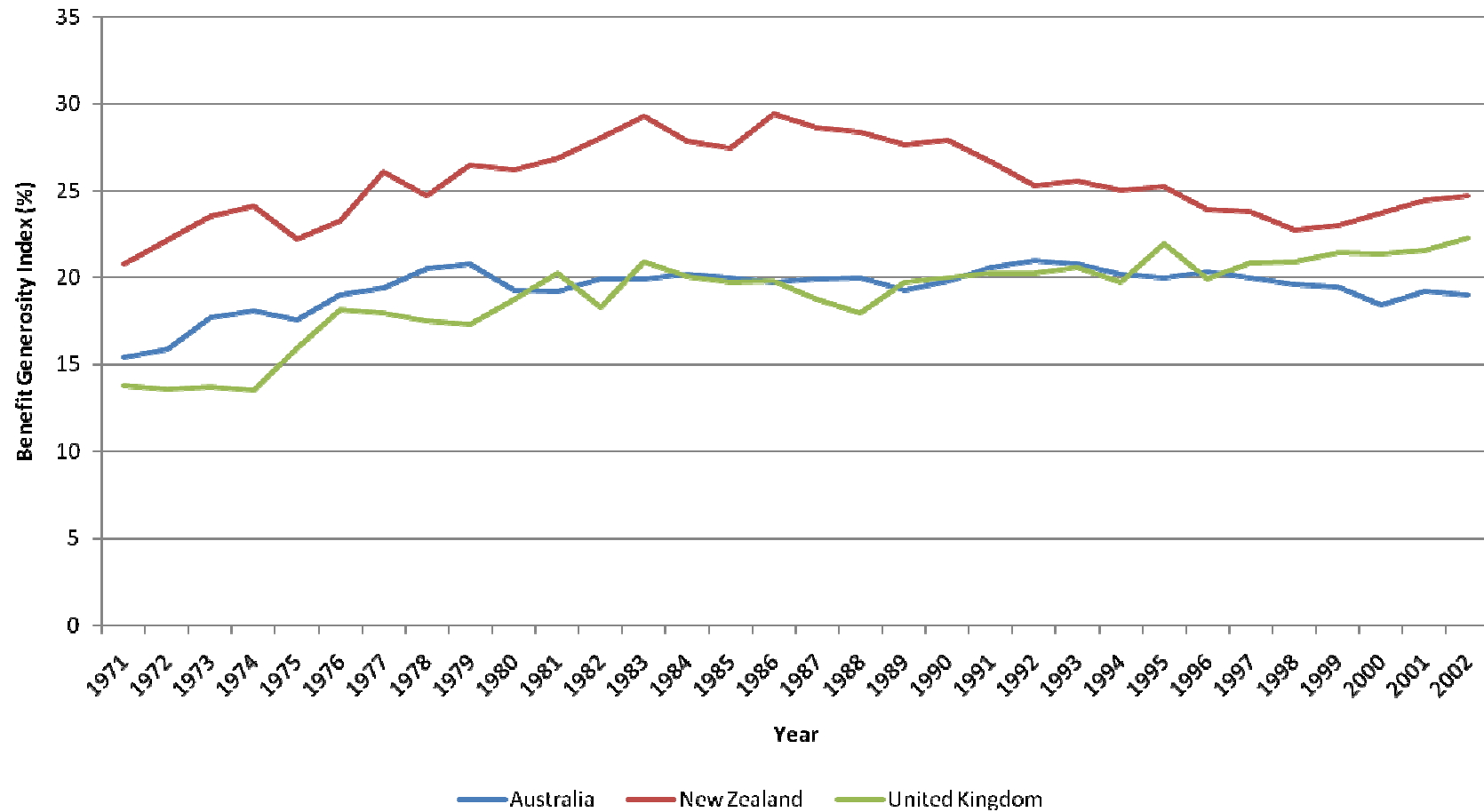




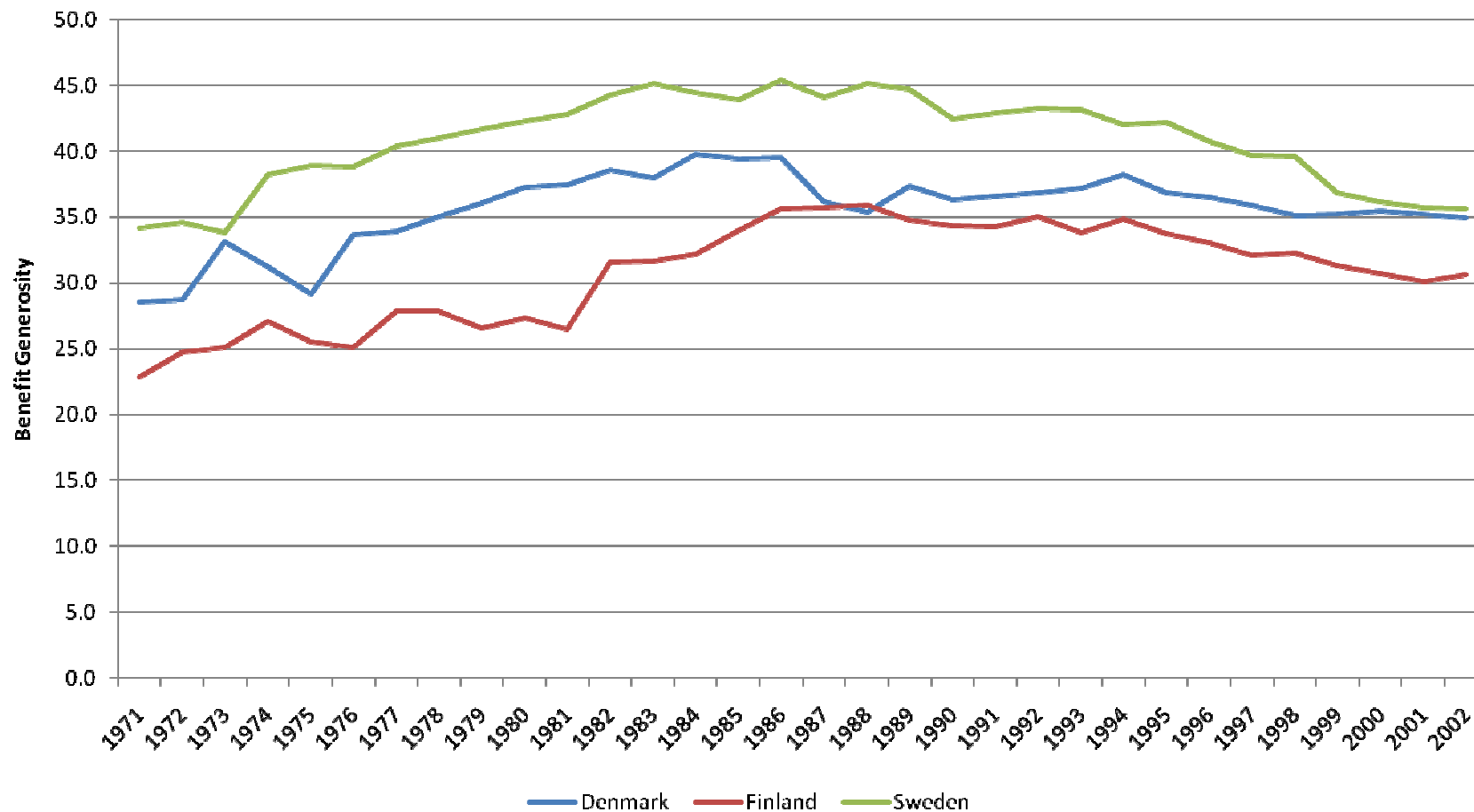
# Benefit Generosity in Three Continental Cases



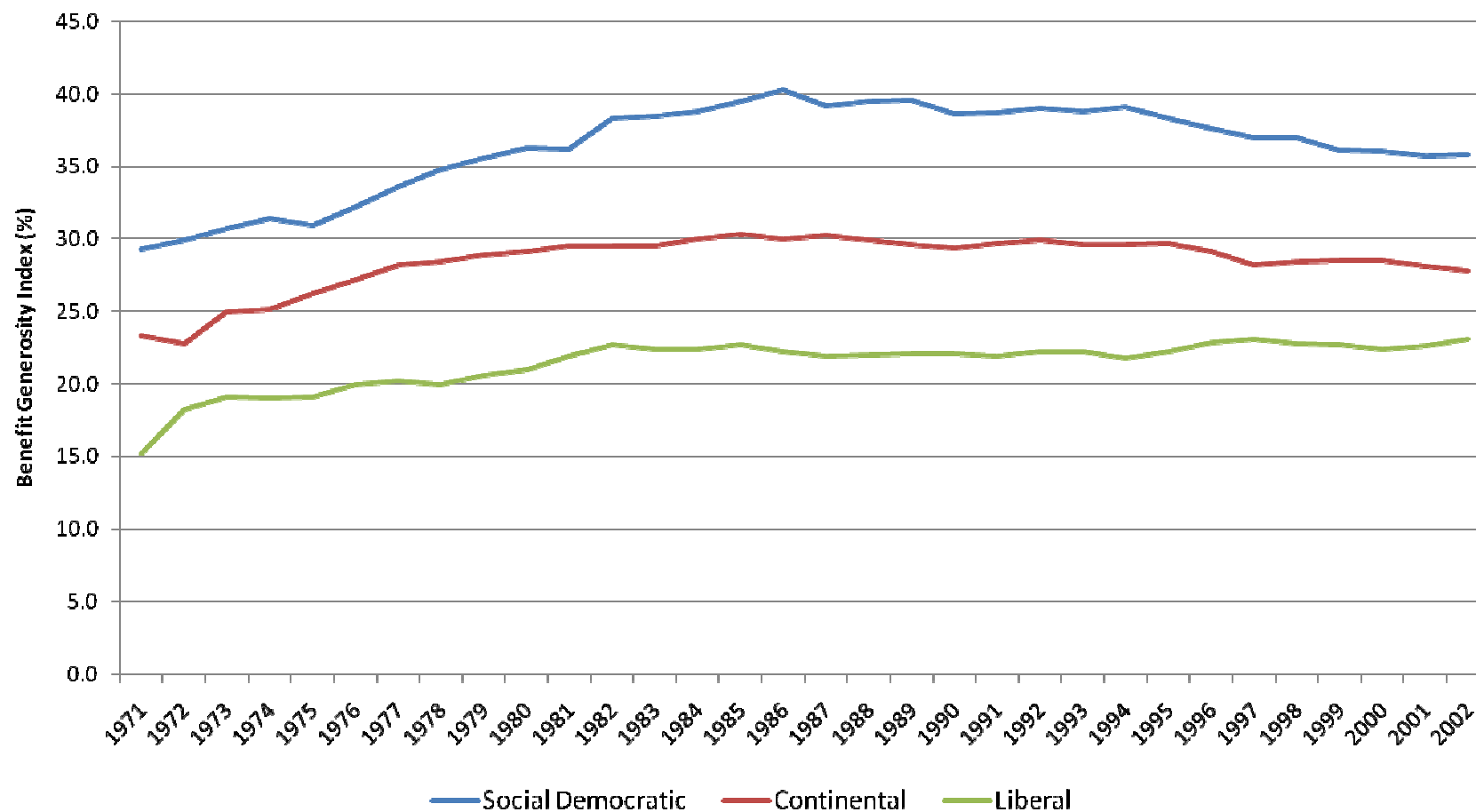
# Benefit Generosity in Three Liberal Cases



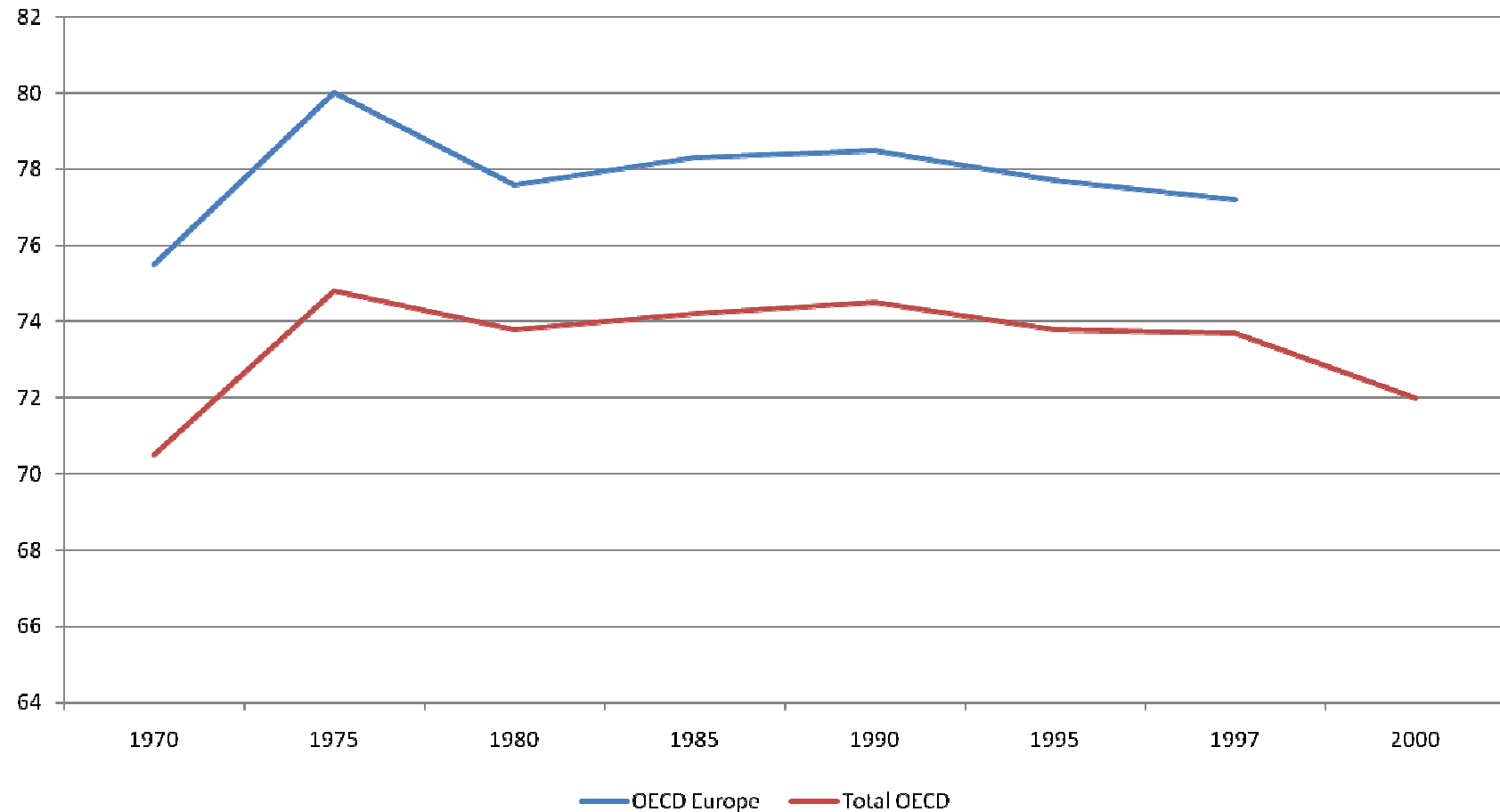
# Benefit Generosity in Three Social Democratic Cases



# Benefit Generosity, 1971-2002



# Public Share of Health Spending, 1970-2000



# The Top 1%\* in Affluent Democracies

\* excluding capital gains

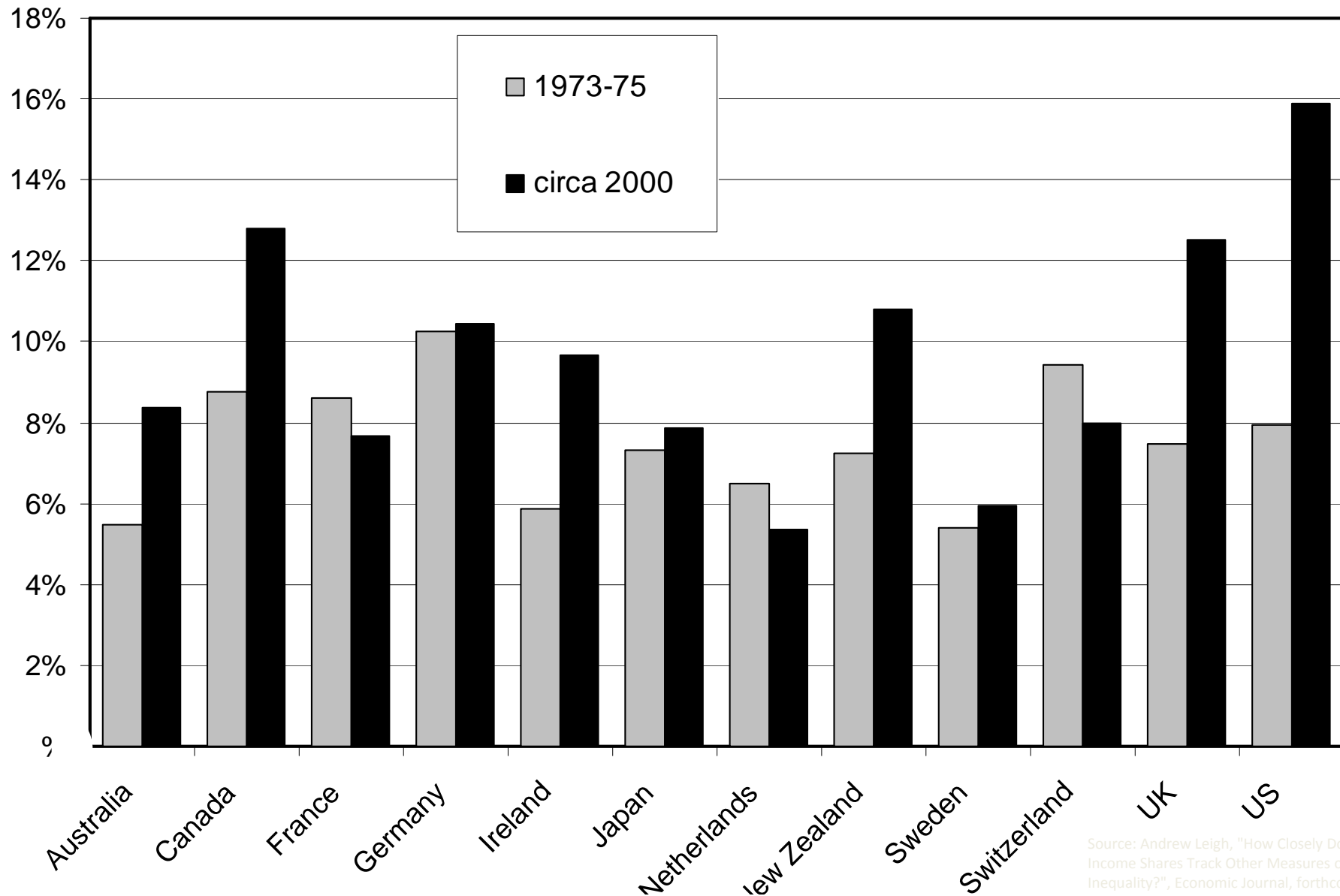
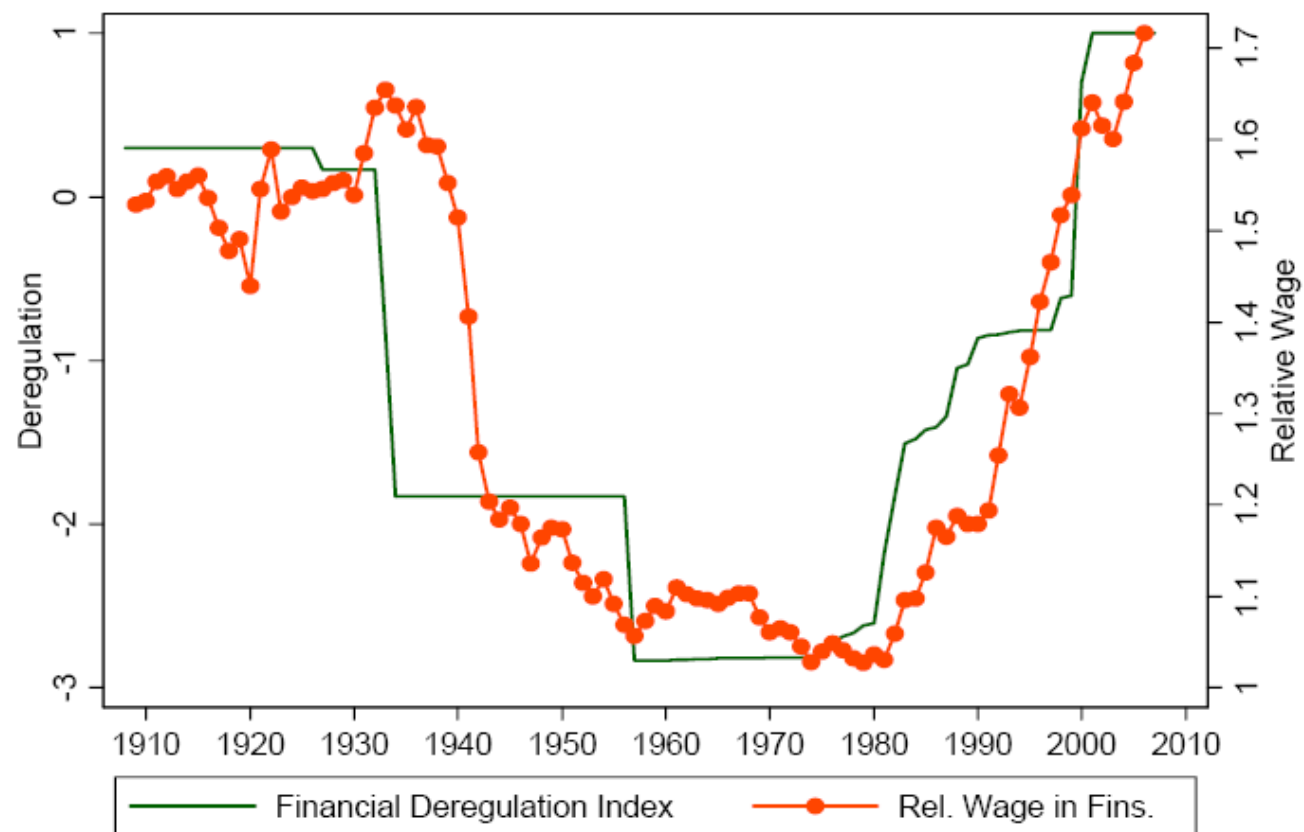


Figure 6: Relative Financial Wage and Financial Deregulation





Department of Social Policy: T H Marshall Fellowships celebration  
and *Oxford Handbook of the Welfare State* launch

# Welfare State Reform Over the (Very) Long-run

**Professor Paul Pierson**

*Professor of public policy, holder of the Avic  
Sarint Chair of Public Policy, Berkeley*

**Professor Julian le Grand**

*Titmuss Professor of Social Policy, LSE*

**Professor Anton Hemerijck**

*Secretary of the Scientific Council for Government  
Policy in the Netherlands, Professor of  
Comparative Analysis of the European Welfare  
State at the Erasmus University of Rotterdam*

**Professor Howard Glennerster**

*Chair, LSE*