

Richard Rogers Rogers Stirk Harbour + Partners

Urban Renaissance

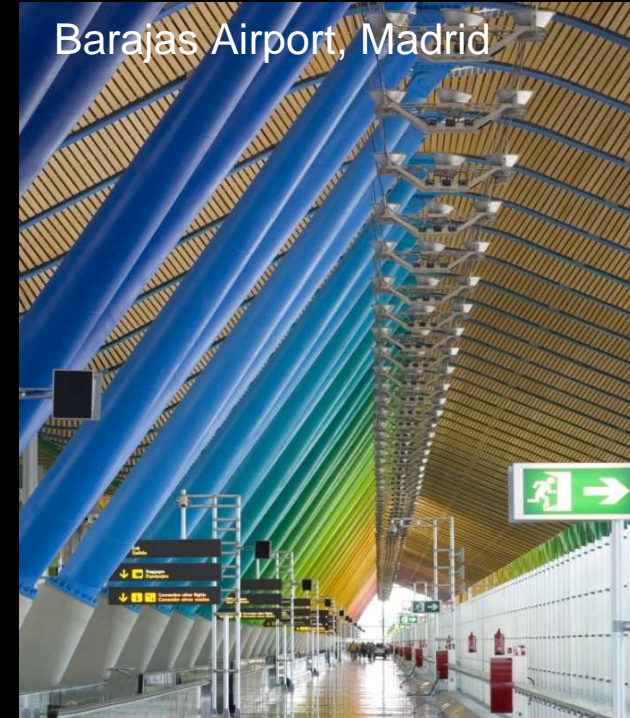
Lloyd's of London



122 Leadenhall Street, London



Barajas Airport, Madrid



Pompidou Centre, Paris



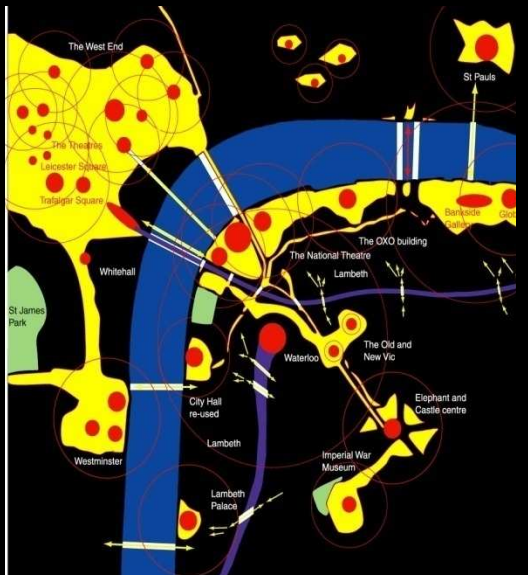
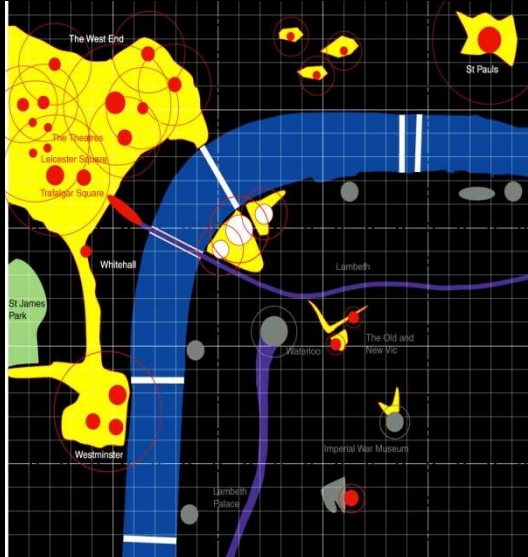
National Assembly for Wales, Cardiff



Copenhagen



South Bank, London



Sprawl and Dereliction

We must rebuild the empty quarters of our cities to bring vitality and security before expanding into the countryside

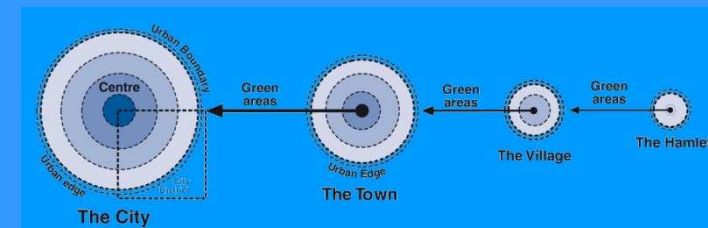
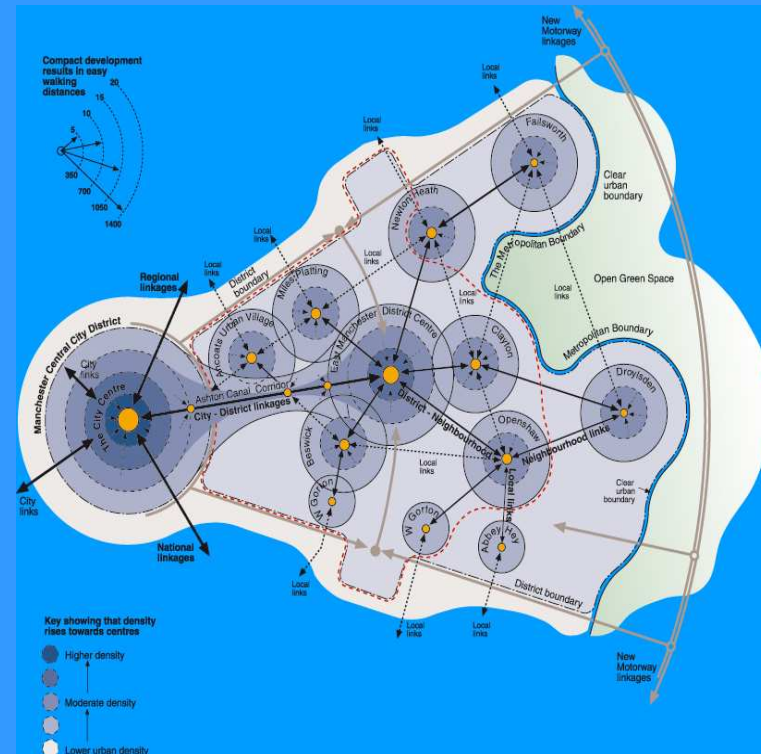
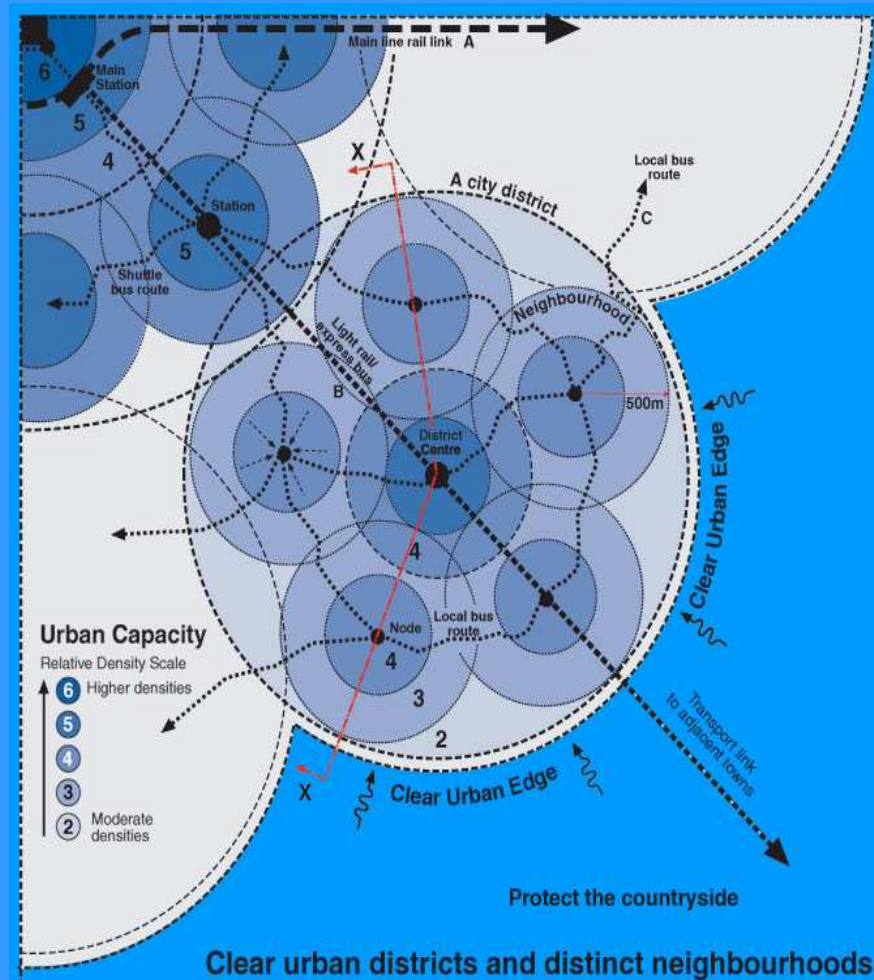


Nice



Manchester

The Anatomy of the City - Communities



Strasbourg



London



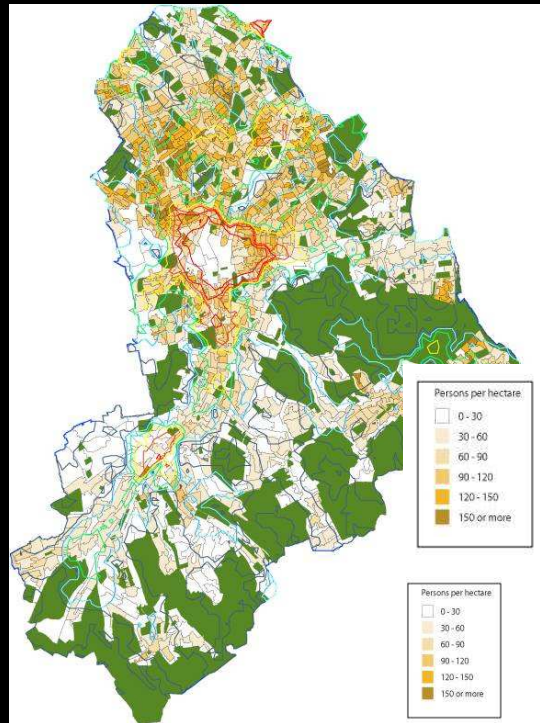
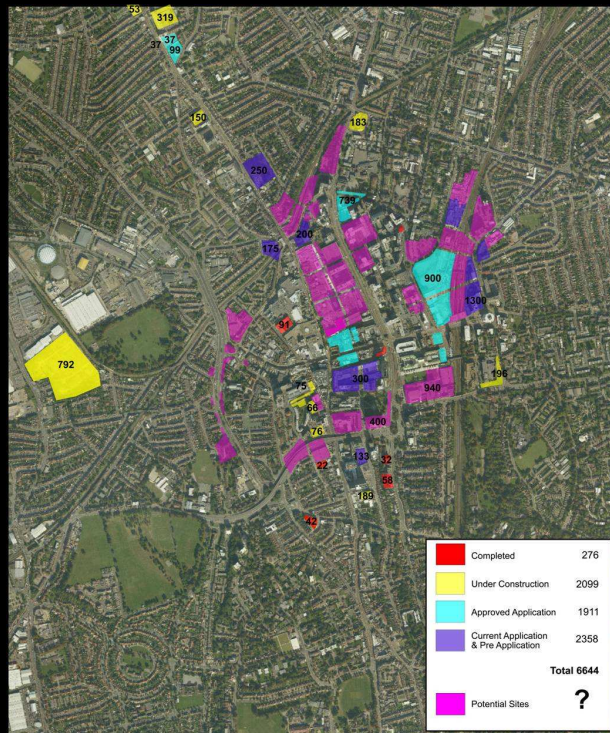
Eco-towns are unsustainable

The US Green Council findings show that draughty accommodation in a dense urban centre is more efficient than that of an eco-home in a greenfield location.

UK Brownfield

The same quantity of brownfield sites are available today as they were 8 years ago despite substantial use.

Croydon Density and Development



The Compact City

Compact and polycentric

Well connected encouraging walking and public transport

Diverse range of uses

Includes both the poor and the rich

Environmentally responsible

Good design

Secure and just - reduce income inequality etc

The New London Plan

800,000 population increase by 2020

Contain city within green belt

All construction on previously developed land

Increase density around public transport hubs

50% affordable housing adjacent to private developments

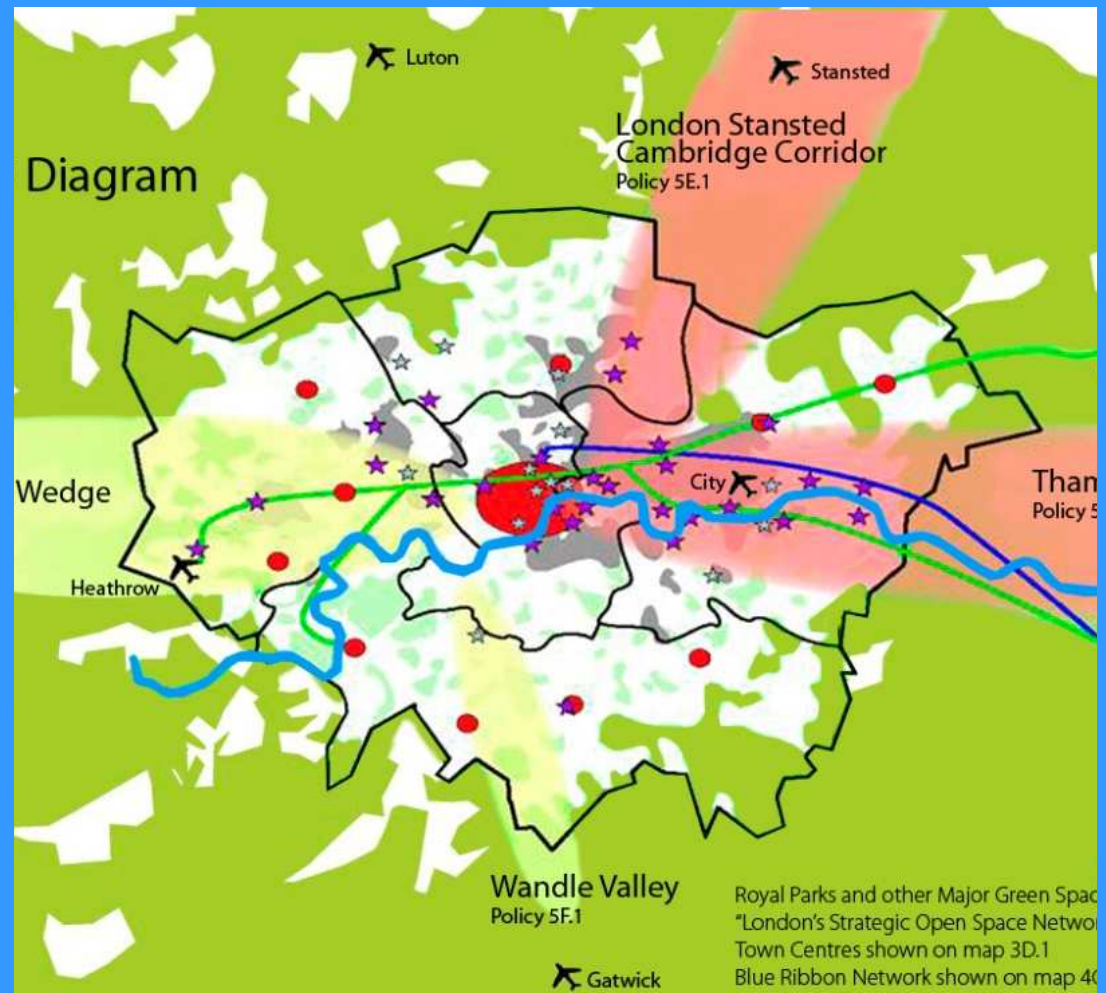
Major public transport investment

Investment in bike hire and bike lanes

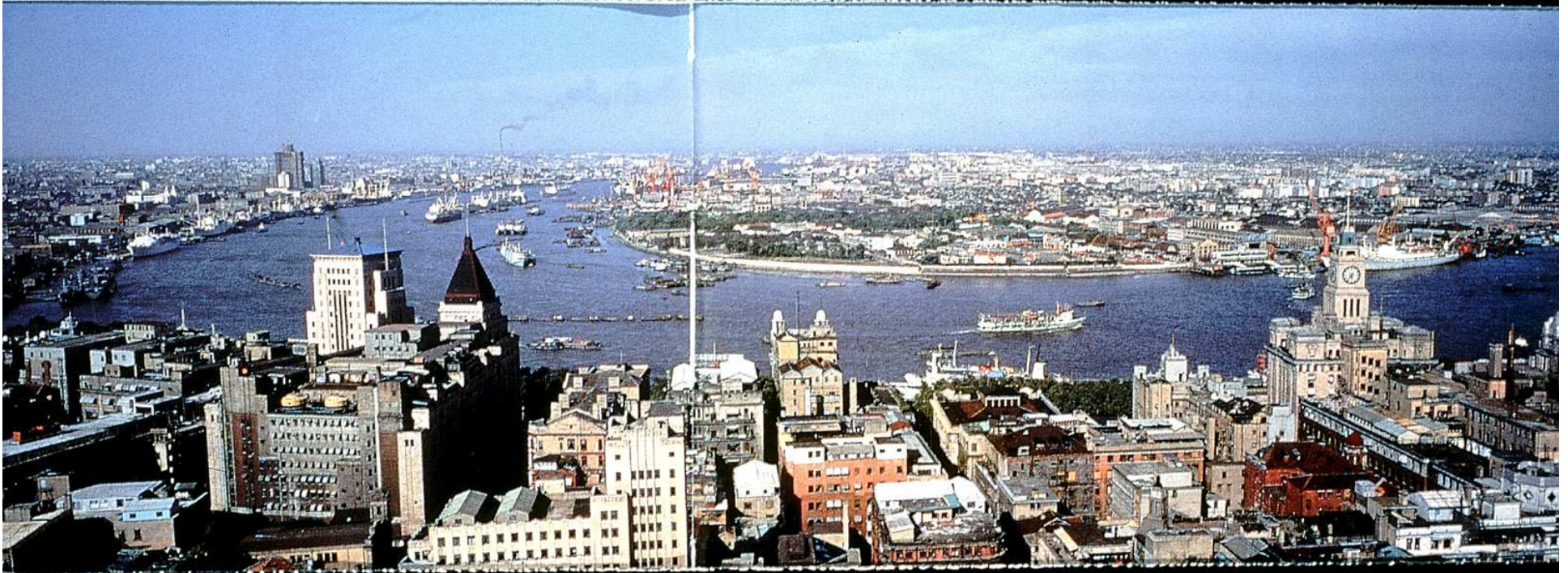
Congestion tax for entering the city centre

Development of public spaces and green network

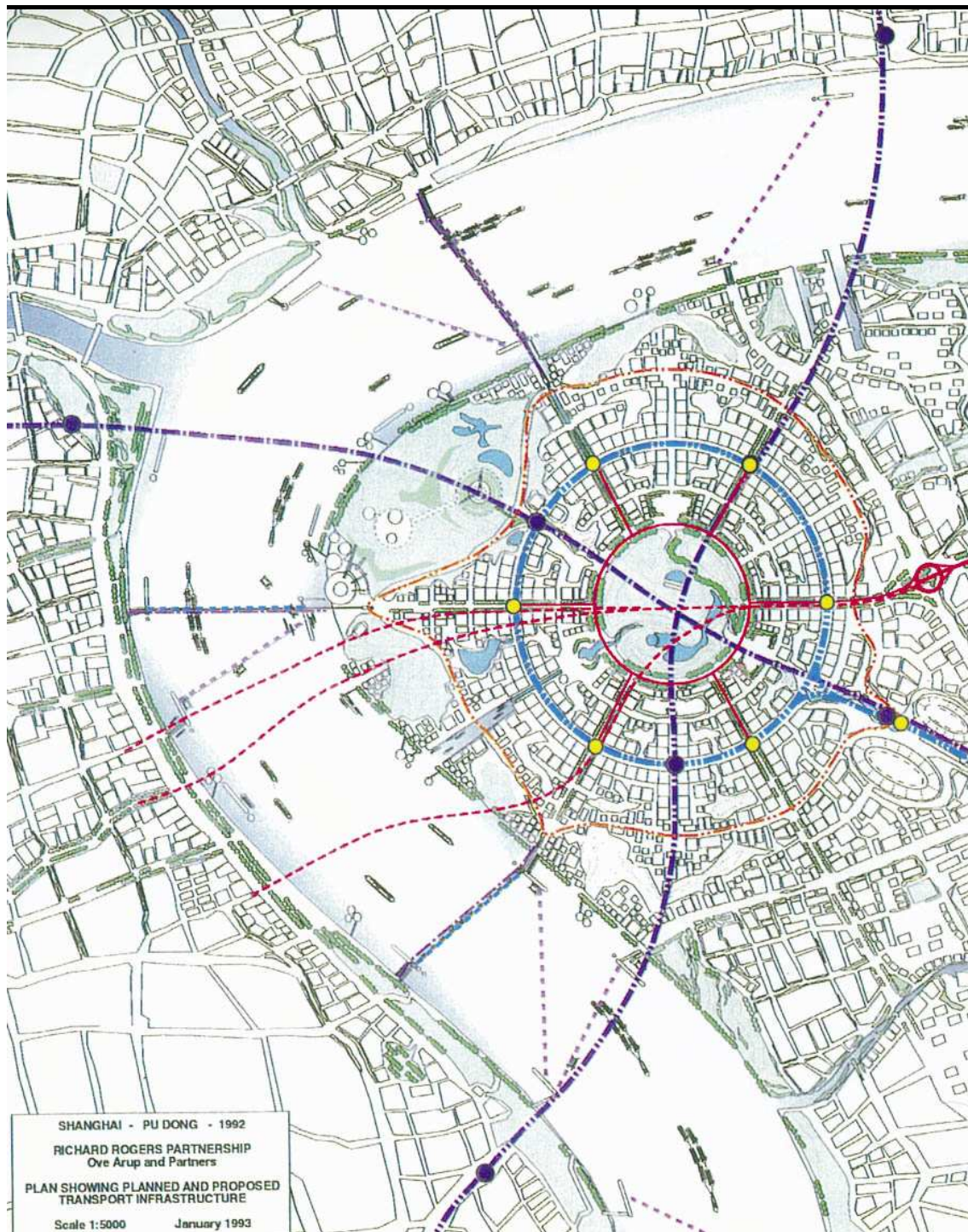
60% reduction of CO2 by 2025



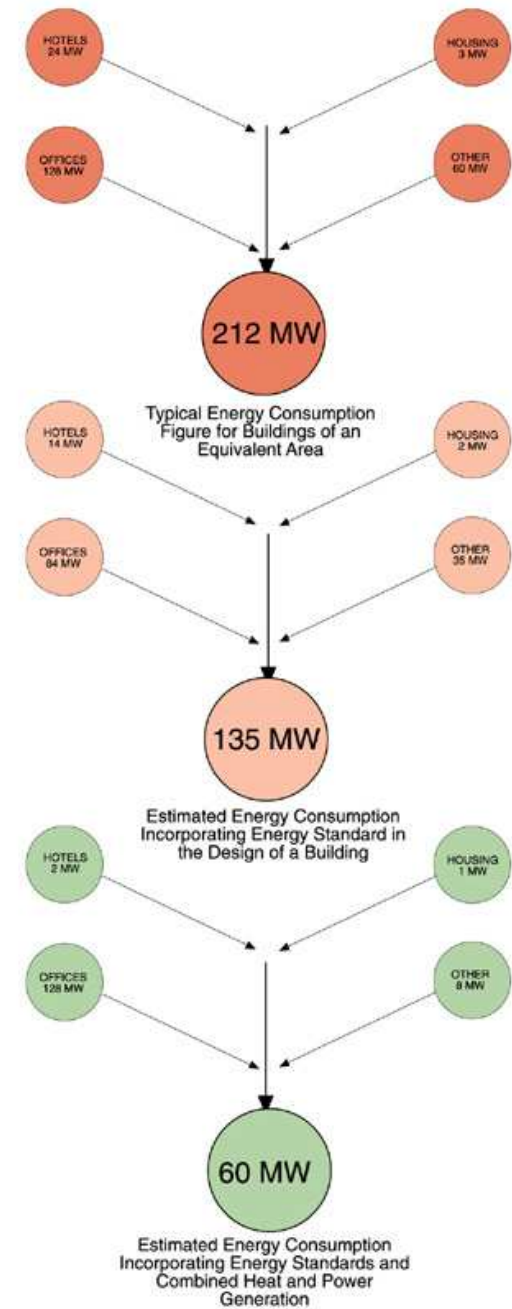
Pudong, Shanghai

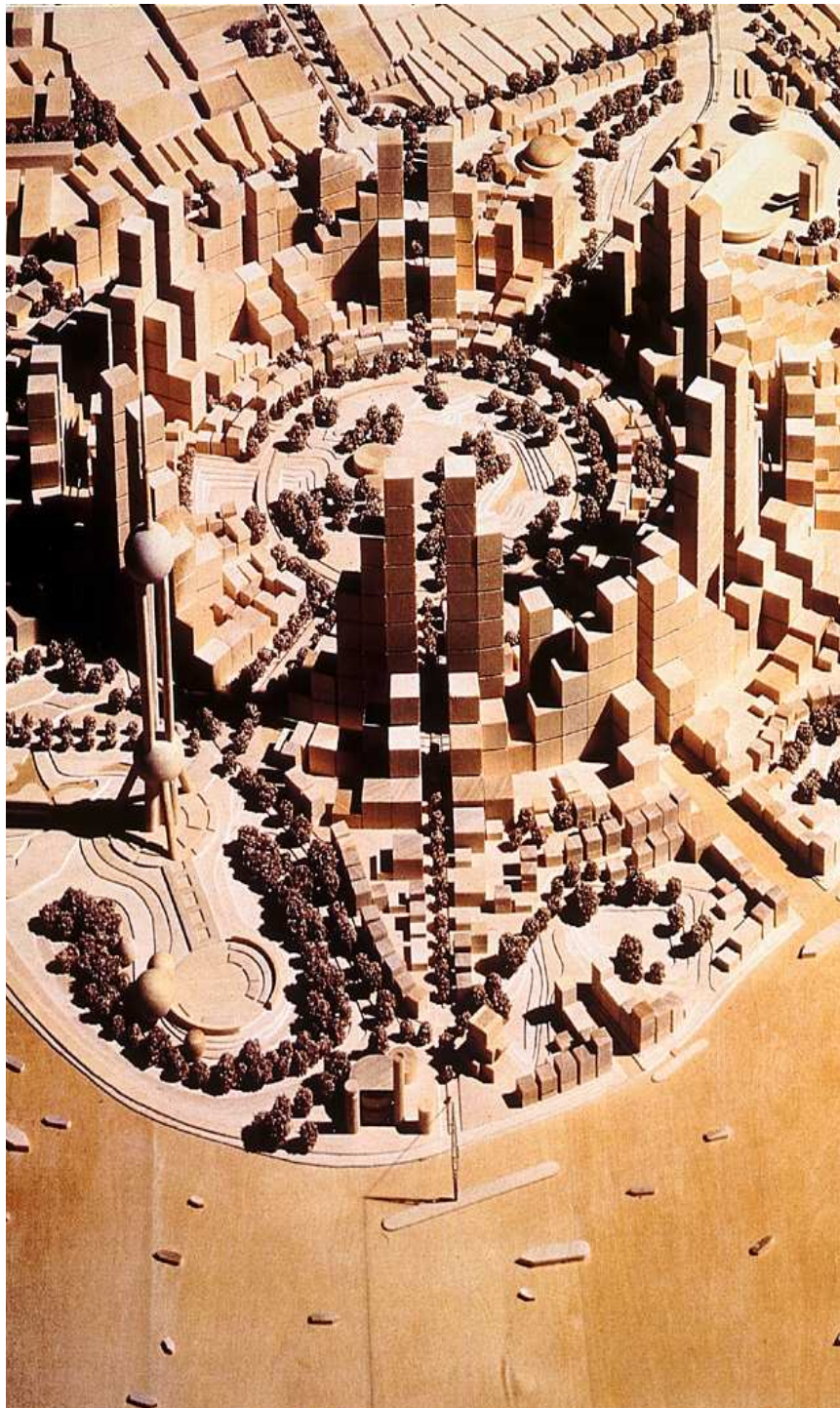






Graph Showing Comparative Energy Use for Liu Jai Zu
 are based on a total of 5.3 million square metres, 50% of which is office :





Climate Change

Human activities are dramatically influencing the world's environment



Energy



Architecture transforms the ordinary by giving order, scale and beauty to space



